

Friday Report - overview and contents

The pages in The Friday Report are about adult offenders in Georgia's prisons and jails. They contain statistical snapshots and trends in the populations and movements of offenders in the state prison system, on probation, on parole, and in local jails. Information comes from databases of the Georgia Department of Corrections (GDC) and the Board of Pardons and Paroles, and from data provided by local jailers. Information is summarized into tables in the GDC/Parole Data Warehouse, and is extracted into these pages each Friday. Pages are organized according to the table that supplied the data.

<p>The Monthly Research Table, named "MO_RESRCH" or simply "MO", contains data about state prisoners, grouped into statistically interesting categories. The table contains one record per month, from January 2000 to the present. Despite its being "monthly", it is updated weekly, because some data trickles in for several weeks before it becomes stable history.</p>	
Page	Content
MO-01	Clemencies and maxouts. Monthly graph from 2000 to present shows the monthly departures from prison via actions by the Georgia Parole Board (clemencies), and via service of 100% of the court ordered sentence (maxouts)
MO-02	48 months of releases. Table shows counts and percentages of releases via clemencies and maxouts, with and without probation to follow, for each of the past 48 months.
MO-03	Methamphetamine. Monthly graph from 2000 to present shows admissions, departures, population, and percent of population of inmates with a current offense of methamphetamine possession, sale, manufacturing, or trafficking, and the changing racial composition of the methamphetamine population
MO-04	Non-violent first incarcerants. Monthly graph from 2000 to present shows admissions, departures, population, and percent of population of inmates without violent or sex crimes, who are serving their first Georgia felony incarceration.
MO-05	Seven Deadly Sins. Monthly graph from 2000 to present shows admissions, departures, population, and percent of population of inmates convicted of kidnapping, armed robbery, rape, aggravated sodomy, aggravated sexual battery, and aggravated child molestation, for whom especially severe penalties are prescribed.
MO-06	48 months of inmate subpopulations. Table shows number and percentage of white and non-white inmates with methamphetamine offenses, and non-violent first incarcerants, and inmates convicted of the Seven Deadly Sins.
MO-07	Inmate age overview. Line graph shows the average age of the inmate population, by month from 2000 to the present. Pie chart shows the number of currently active inmates in their teens, twenties, thirties, forties, fifties, and age sixty+.
MO-08	Counts by age group. Graphs show the count, by month from 2000 to the present, of inmates in their teens, twenties, thirties, forties, fifties, and age sixty+.
MO-09	Percentages by age group. Graphs show the percentages, by month from 2000 to the present, of inmates in their teens, twenties, thirties, forties, fifties, and age sixty+.
MO-10	48 months of inmate ages. Table shows average age of the standing population, and counts and percentages of teens, twenties, thirties, forties, fifties, and sixty+, for each of the past 48 months.

Friday Report - overview and contents (continued)

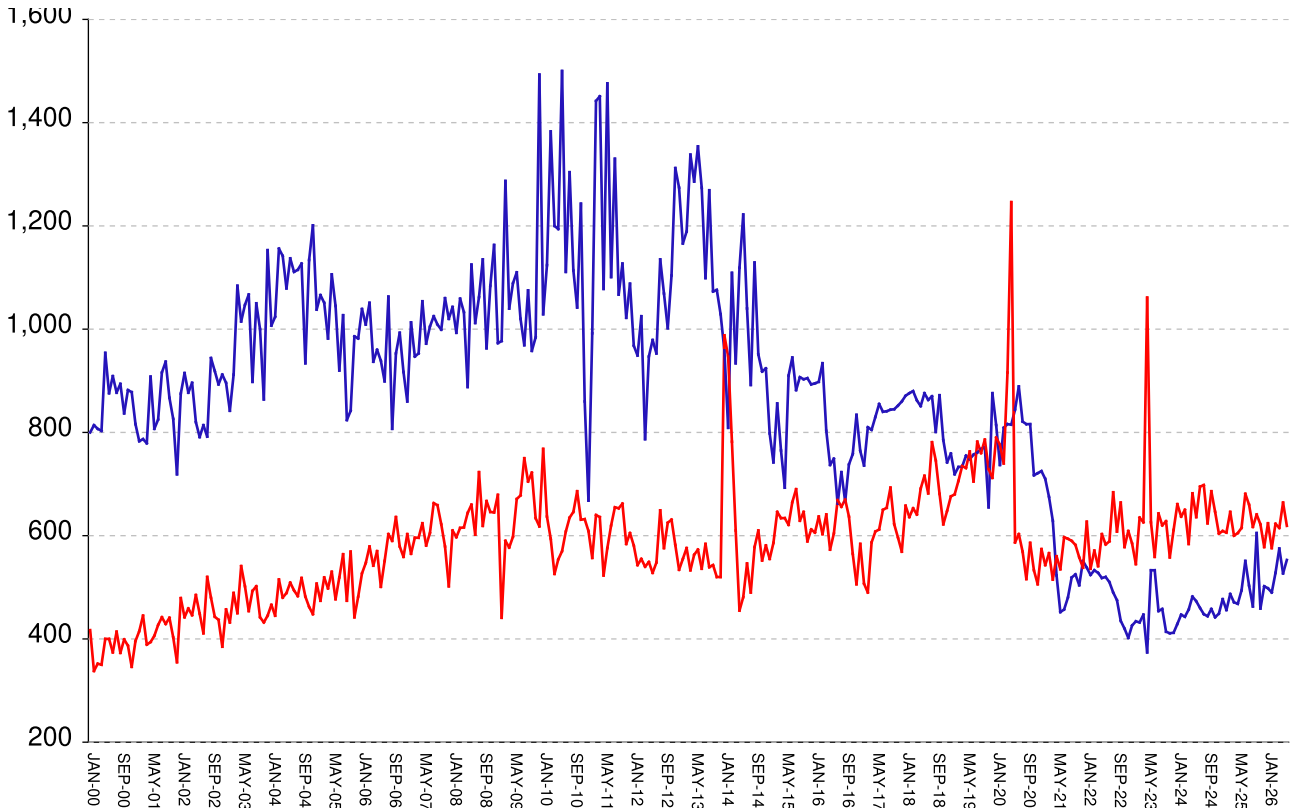
The MSR Table is based on the Management Summary Report (MSR), a snapshot report posted each week in GDC's Scribe database. MSR_RESRCH gathers that data into weekly trends, with one record for each Friday since March 20th, 2009

Page	Content
MSR-01	All housed offenders. Weekly graph from March 20, 2009 to present, showing counts of inmates in state prisons, transitional centers, county prisons, private prisons, inmate boot camps, parole revocation centers, probation Residential Substance Abuse Treatment (RSAT), probation boot camps, probation detention centers, plus the inmate jail backlog and probationers in jail waiting for state facilities.
MSR-02	Probationers in jail. Weekly graph from March 20, 2009 to present, showing counts of probationers in local jails awaiting placement in probation detention centers, probation RSAT centers, and probation boot camps.
MSR-03	State inmates in jail. Weekly graph from March 20, 2009 to present, showing counts of state inmates in local jails awaiting placement in state prison facilities – including those who have not yet been assigned to a diagnostic center, those whose transportation has been delayed for some reason, and those who are ready to be picked up.
MSR-04	Female state inmates in jail. Weekly graph from March 20, 2009 to present, showing counts of female state inmates awaiting placement in a state prison for females.
MSR-05	52-week table: housed offenders. Data for each of the past 52 weeks, showing total prison inmates, parolees in revocation centers, probationers in RSAT/boot camp/detention centers, inmate jail backlog, probationers in jail waiting for facilities, with subtotals.
MSR-06	52-week table: state prisoners. Data for each of the past 52 weeks, showing inmates in state prisons, transition centers, county prisons, pre-release centers, private prisons, and inmate boot camps, with subtotals.
MSR-07	52-week table: waiting in jail. Data for each of the past 52 weeks, showing probationers waiting for detention centers, RSAT, and boot camp; and state prisoners not yet assigned to diagnostic centers, in admission process, with delayed transport, and ready for pickup, with subtotals.

Releases by clemency and maxout, Jan-2000 to Jun-2026

There are two main ways of being released from a Georgia prison -- by actions of the Board of Pardons and Paroles ("Clemencies") and by service of 100% of the court-ordered sentences ("Maxouts").

"Clemency" includes paroles, reprieves, commutations, and transfer to other confinement prior to expiration of sentence. "Other Releases" includes deaths, and sentences modified or overturned by the courts. Clemencies and maxouts may or may not be followed by periods of probation.



A. Clemency with probation to follow	RISES BY	28	from	460	to	488
B. Clemency only	falls by	2	from	67	to	65
C. Maxout with probation to follow	falls by	47	from	613	to	566
D. Maxout only (unsupervised)	RISES BY	2	from	51	to	53
E. Other releases	falls by	5	from	27	to	22
F. Total releases (A+B+C+D+E)	falls by	24	from	1218	to	1194
G. Total clemencies (A+B) (top line)	RISES BY	26	from	527	to	553
H. Total maxouts (C+D) (bottom line)	falls by	45	from	664	to	619
I. % of releases by clemency (G/F)	RISES BY	3.04%	from	43.27%	to	46.31%
J. % of releases by maxout (H/F)	falls by	2.68%	from	54.52%	to	51.84%
K. Supervised releases (A+B+C)	falls by	21	from	1140	to	1119
L. % unsupervised releases (D/F)	RISES BY	.25%	from	4.19%	to	4.44%
M. % supervised releases (K/F)	RISES BY	.12%	from	93.6%	to	93.72%

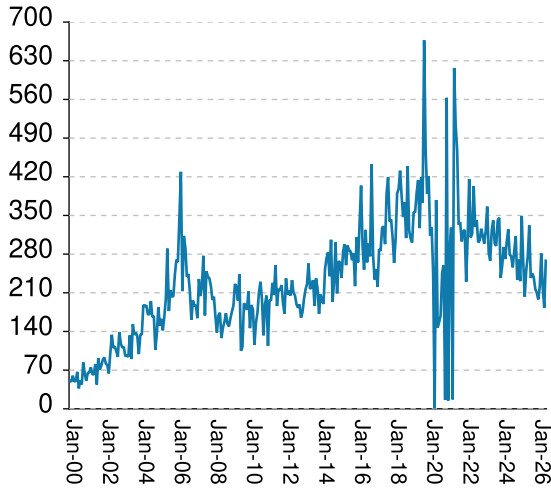
Monthly releases from prison by type of release, for the past 48 months

	A	B	C	D	E	F	G	H	I	J
Month	Clemency + Prob	Clemency Only	Maxout + Prob	Maxout Only	Other rels	Total Releases (A+B+C+D+E)	Total Clemency (A+B)	Total Maxout (C+D)	Percent Clemency (G/F)	Percent Maxout (H/F)
Jul-22	439	71	529	60	14	1113	510	589	45.82%	52.92%
Aug-22	423	67	615	69	21	1195	490	684	41.00%	57.24%
Sep-22	397	78	548	60	18	1101	475	608	43.14%	55.22%
Oct-22	374	61	602	62	23	1122	435	664	38.77%	59.18%
Nov-22	367	53	521	57	19	1017	420	578	41.30%	56.83%
Dec-22	342	60	546	63	28	1039	402	609	38.69%	58.61%
Jan-23	375	51	525	60	23	1034	426	585	41.20%	56.58%
Feb-23	386	48	491	54	17	996	434	545	43.57%	54.72%
Mar-23	376	56	573	62	24	1091	432	635	39.60%	58.20%
Apr-23	392	55	573	53	26	1099	447	626	40.67%	56.96%
May-23	327	47	928	133	20	1455	374	1061	25.70%	72.92%
Jun-23	460	73	567	59	19	1178	533	626	45.25%	53.14%
Jul-23	459	74	508	51	25	1117	533	559	47.72%	50.04%
Aug-23	400	54	588	55	22	1119	454	643	40.57%	57.46%
Sep-23	401	57	576	44	10	1088	458	620	42.10%	56.99%
Oct-23	361	53	576	52	31	1073	414	628	38.58%	58.53%
Nov-23	354	57	490	68	19	988	411	558	41.60%	56.48%
Dec-23	365	47	554	57	21	1044	412	611	39.46%	58.52%
Jan-24	369	60	600	61	32	1122	429	661	38.24%	58.91%
Feb-24	396	51	577	60	24	1108	447	637	40.34%	57.49%
Mar-24	379	64	585	65	20	1113	443	650	39.80%	58.40%
Apr-24	409	48	531	53	33	1074	457	584	42.55%	54.38%
May-24	426	56	605	77	26	1190	482	682	40.50%	57.31%
Jun-24	410	63	574	62	23	1132	473	636	41.78%	56.18%
Jul-24	399	61	627	68	38	1193	460	695	38.56%	58.26%
Aug-24	381	67	641	57	19	1165	448	698	38.45%	59.91%
Sep-24	379	65	560	64	34	1102	444	624	40.29%	56.62%
Oct-24	399	59	631	55	28	1172	458	686	39.08%	58.53%
Nov-24	388	54	591	55	23	1111	442	646	39.78%	58.15%
Dec-24	391	58	554	50	33	1086	449	604	41.34%	55.62%
Jan-25	416	61	560	49	30	1116	477	609	42.74%	54.57%
Feb-25	399	57	546	60	17	1079	456	606	42.26%	56.16%
Mar-25	431	56	593	53	23	1156	487	646	42.13%	55.88%
Apr-25	408	63	555	45	18	1089	471	600	43.25%	55.10%
May-25	422	46	551	54	26	1099	468	605	42.58%	55.05%
Jun-25	432	62	580	35	36	1145	494	615	43.14%	53.71%
Jul-25	491	60	620	61	33	1265	551	681	43.56%	53.83%
Aug-25	430	73	602	58	16	1179	503	660	42.66%	55.98%
Sep-25	405	58	576	41	26	1106	463	617	41.86%	55.79%
Oct-25	519	86	590	51	26	1272	605	641	47.56%	50.39%
Nov-25	407	52	582	40	22	1103	459	622	41.61%	56.39%
Dec-25	445	57	521	57	28	1108	502	578	45.31%	52.17%
Jan-26	426	72	572	52	35	1157	498	624	43.04%	53.93%
Feb-26	428	62	516	60	27	1093	490	576	44.83%	52.70%
Mar-26	448	80	571	52	28	1179	528	623	44.78%	52.84%
Apr-26	501	74	561	54	19	1209	575	615	47.56%	50.87%
May-26	460	67	613	51	27	1218	527	664	43.27%	54.52%
Jun-26	488	65	566	53	22	1194	553	619	46.31%	51.84%

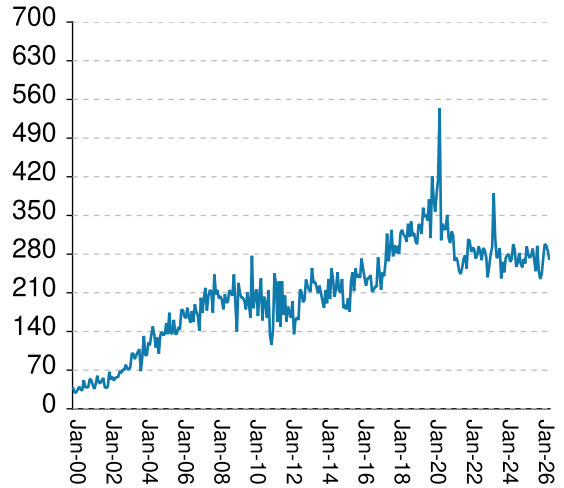
Inmates with meth crimes, by month, Jan-2000 to Jun-2026

Methamphetamine is one of the most addictive drugs ever known. At first it induces intense euphoria, but with continued use causes severe depression and physical deterioration, including the dental catastrophe known as "meth mouth". Georgia's meth epidemic began in the early 2000s and has seen continued growth over the last 2 decades, with continued expansion beyond the originally predominate use by northern county white males.

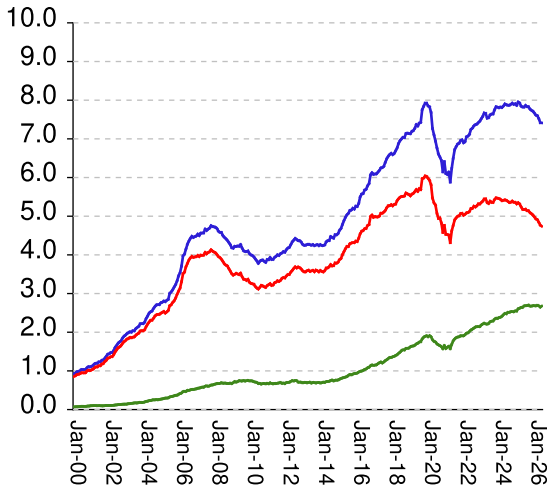
Admissions



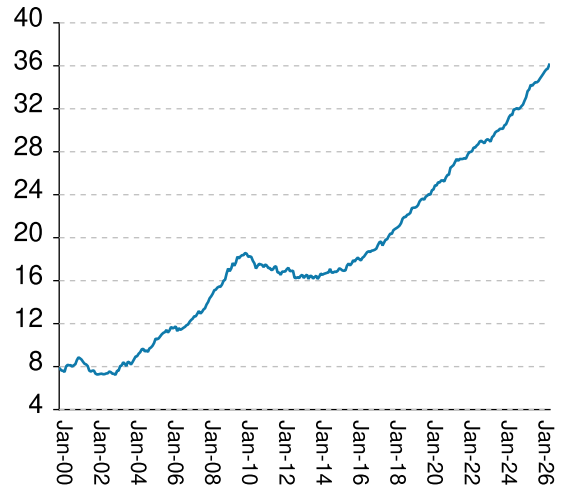
Releases



Population x1000



Percent Non-White

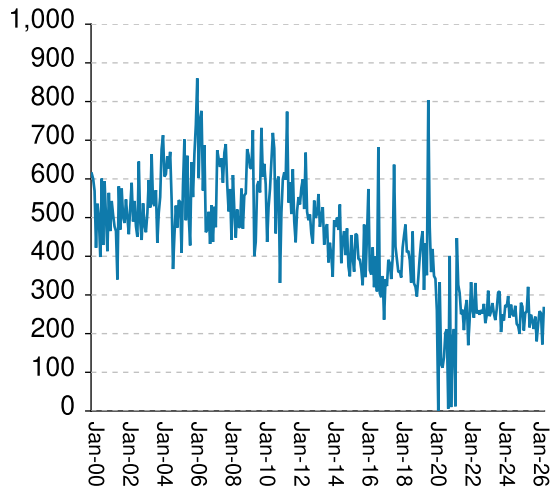


Methamphetamine admissions	RISES BY	85	from	183	to	268
Methamphetamine releases	falls by	14	from	286	to	272
Methamphetamine population	falls by	4	from	7417	to	7413
Meth white population	falls by	29	from	4769	to	4740
Meth non-white population	RISES BY	26	from	2650	to	2676
Percent meth inmates who are non-white	RISES BY	.37%	from	35.73%	to	36.1%

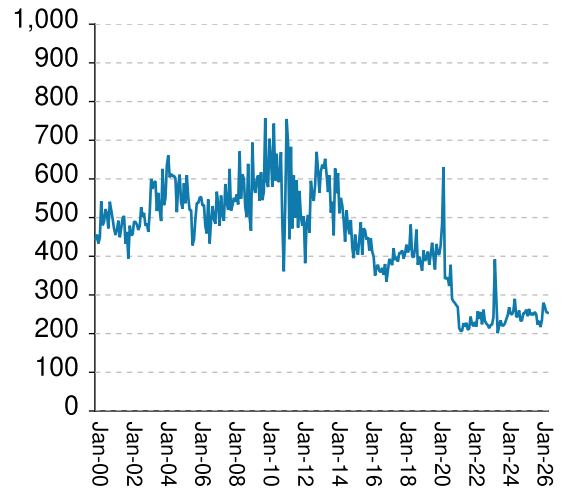
Non-violent first-incarcerants, by month, Jan-2000 to Jun-2026

Historically, about one in six Georgia prison inmates has been a first-time incarcerant with a non-violent crime. In 2012 Georgia passed HB1176, which aimed to curb the growth of prison population by steering the least dangerous, least hardened offenders away from prison through pre-trial intervention, diversion, drug courts and treatment programs, and raising the dollar thresholds that define property felonies. The expectation is that over time, these measures will reduce the percentage of first-time non-violent incarcerants in prison.

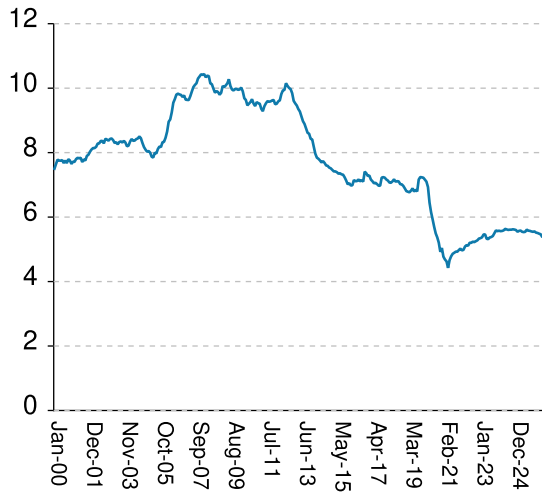
Admissions



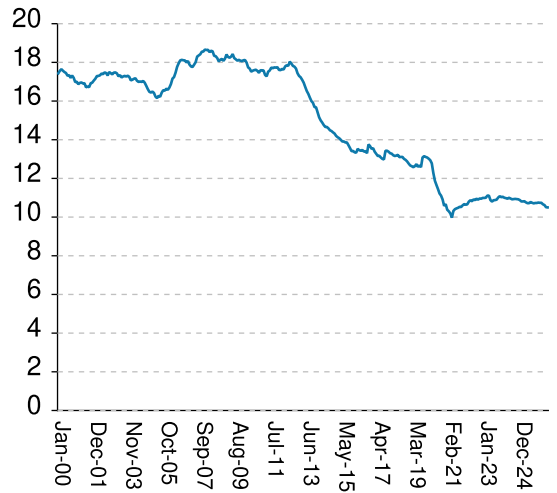
Releases



Population x1000



% Total Population

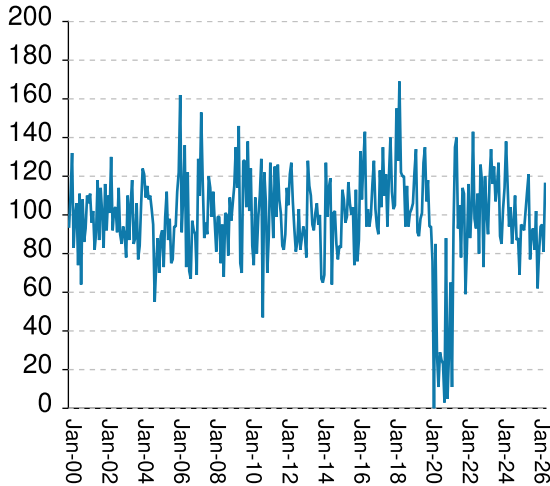


Non-viol/1st-Incar admissions	RISES BY	94	from	172	to	266
Non-viol/1st-Incar releases	falls by	2	from	256	to	254
Non-viol/1st-Incar population	RISES BY	12	from	5383	to	5395
Non-viol/1st-Incar % of total population	falls by	.01%	from	10.51%	to	10.5%

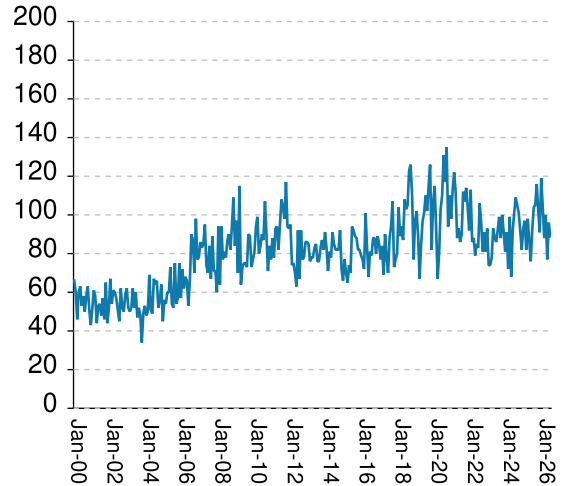
'Seven Deadly Sin', by month, Jan-2000 to Jun-2026

Tough legislation in 1995 imposed mandatory ten-year minimum terms for kidnapping, armed robbery, rape, aggravated sodomy, aggravated sexual battery, and aggravated child molestation, and a minimum of 25 years for murder. A second conviction resulted in life without parole. As predicted, longer prison terms caused population to climb steeply for about a decade. It then began to level off, as releases started catching up with admissions. The 2008 dip in percentage of total population (bottom right) was caused by the surge of methamphetamine convictions (Page MO-03). Note: these graphs include inmates convicted before 1995.

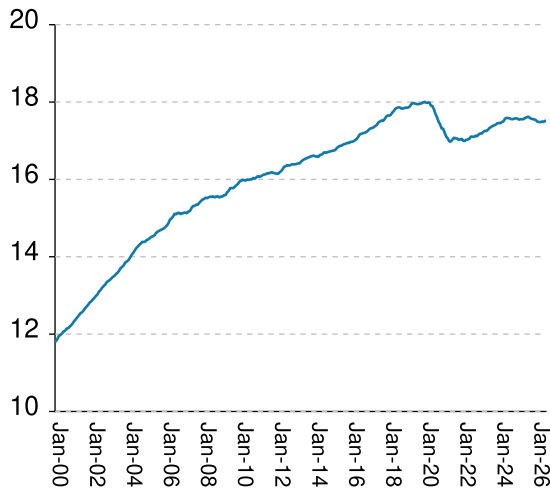
Admissions



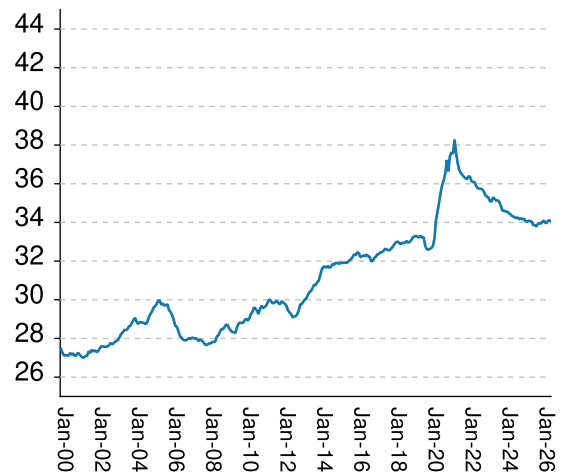
Releases



Population x1000



% Total Population



"Seven Deadly Sin" admissions	RISES BY	35	from	81	to	116
"Seven Deadly Sin" releases	falls by	7	from	96	to	89
"Seven Deadly Sin" population	RISES BY	27	from	17482	to	17509
"Seven Deadly Sin" % of total population	falls by	.05%	from	34.12%	to	34.07%

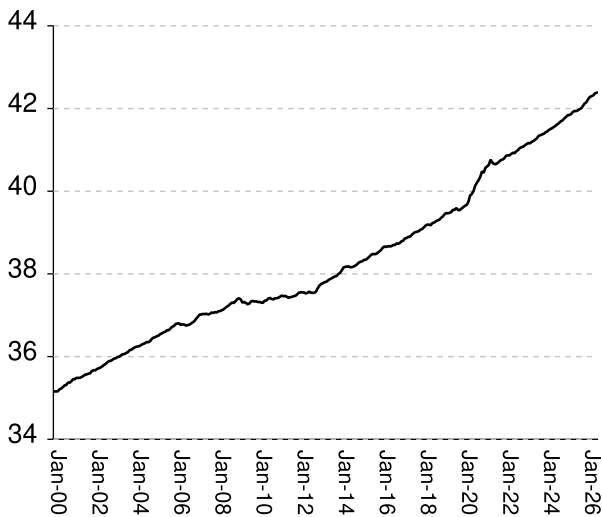
Inmate subpopulation counts and percentages, for the past 48 months

Month	Methamphetamine						1st Incar Non-Violent		Seven Deadly Sins	
	Total Number	Total Percent	White Number	White Percent	Non White Number	Non White Percent	Number	Percent	Number	Percent
Jul-22	7278	15.22%	5205	71.52%	2080	28.58%	5201	10.88%	17102	35.77%
Aug-22	7334	15.33%	5258	71.69%	2105	28.70%	5237	10.95%	17099	35.75%
Sep-22	7366	15.37%	5239	71.12%	2133	28.96%	5224	10.90%	17129	35.74%
Oct-22	7380	15.40%	5269	71.40%	2142	29.02%	5252	10.96%	17118	35.71%
Nov-22	7419	15.39%	5318	71.68%	2144	28.90%	5278	10.95%	17163	35.59%
Dec-22	7457	15.36%	5316	71.29%	2147	28.79%	5333	10.99%	17187	35.41%
Jan-23	7518	15.45%	5353	71.20%	2185	29.06%	5346	10.99%	17186	35.33%
Feb-23	7582	15.52%	5390	71.09%	2212	29.17%	5372	11.00%	17232	35.28%
Mar-23	7668	15.60%	5444	71.00%	2230	29.08%	5460	11.11%	17255	35.09%
Apr-23	7657	15.57%	5447	71.14%	2216	28.94%	5463	11.11%	17252	35.09%
May-23	7535	15.39%	5354	71.06%	2212	29.36%	5328	10.88%	17282	35.30%
Jun-23	7549	15.34%	5329	70.59%	2226	29.49%	5316	10.80%	17330	35.21%
Jul-23	7617	15.43%	5389	70.75%	2269	29.79%	5367	10.87%	17354	35.14%
Aug-23	7640	15.45%	5360	70.16%	2285	29.91%	5382	10.88%	17380	35.14%
Sep-23	7644	15.40%	5357	70.08%	2291	29.97%	5412	10.90%	17399	35.06%
Oct-23	7749	15.51%	5428	70.05%	2335	30.13%	5498	11.01%	17414	34.86%
Nov-23	7829	15.53%	5473	69.91%	2360	30.14%	5586	11.08%	17450	34.61%
Dec-23	7819	15.50%	5466	69.91%	2357	30.14%	5564	11.03%	17458	34.60%
Jan-24	7806	15.46%	5455	69.88%	2378	30.46%	5577	11.05%	17452	34.57%
Feb-24	7821	15.47%	5435	69.49%	2389	30.55%	5564	11.00%	17483	34.57%
Mar-24	7812	15.40%	5403	69.16%	2412	30.88%	5570	10.98%	17498	34.49%
Apr-24	7848	15.38%	5411	68.95%	2452	31.24%	5587	10.95%	17568	34.43%
May-24	7902	15.43%	5421	68.60%	2484	31.44%	5635	11.00%	17592	34.35%
Jun-24	7883	15.38%	5409	68.62%	2477	31.42%	5617	10.96%	17585	34.30%
Jul-24	7871	15.35%	5384	68.40%	2513	31.93%	5602	10.92%	17580	34.27%
Aug-24	7870	15.34%	5357	68.07%	2515	31.96%	5609	10.93%	17560	34.22%
Sep-24	7892	15.40%	5363	67.95%	2530	32.06%	5609	10.94%	17555	34.25%
Oct-24	7922	15.40%	5390	68.04%	2532	31.96%	5621	10.93%	17573	34.16%
Nov-24	7893	15.36%	5363	67.95%	2530	32.05%	5613	10.92%	17578	34.21%
Dec-24	7907	15.37%	5358	67.76%	2549	32.24%	5599	10.88%	17573	34.16%
Jan-25	7867	15.33%	5319	67.61%	2548	32.39%	5546	10.81%	17545	34.20%
Feb-25	7953	15.43%	5348	67.25%	2605	32.75%	5573	10.81%	17558	34.07%
Mar-25	7924	15.36%	5315	67.07%	2620	33.06%	5581	10.82%	17554	34.02%
Apr-25	7847	15.24%	5242	66.80%	2640	33.64%	5544	10.76%	17559	34.09%
May-25	7825	15.16%	5180	66.20%	2645	33.80%	5534	10.72%	17585	34.07%
Jun-25	7823	15.12%	5174	66.14%	2678	34.23%	5543	10.72%	17605	34.04%
Jul-25	7865	15.11%	5180	65.86%	2685	34.14%	5611	10.78%	17622	33.86%
Aug-25	7833	15.07%	5144	65.67%	2689	34.33%	5579	10.74%	17594	33.86%
Sep-25	7829	15.06%	5140	65.65%	2699	34.47%	5572	10.71%	17569	33.79%
Oct-25	7772	15.01%	5094	65.54%	2678	34.46%	5555	10.73%	17560	33.92%
Nov-25	7738	14.98%	5065	65.46%	2676	34.58%	5544	10.73%	17551	33.97%
Dec-25	7713	14.93%	5029	65.20%	2685	34.81%	5555	10.75%	17534	33.94%
Jan-26	7667	14.92%	4982	64.98%	2685	35.02%	5518	10.74%	17492	34.05%
Feb-26	7615	14.85%	4932	64.77%	2683	35.23%	5507	10.74%	17485	34.09%
Mar-26	7598	14.76%	4910	64.62%	2694	35.46%	5485	10.66%	17479	33.96%
Apr-26	7520	14.61%	4839	64.35%	2681	35.65%	5467	10.62%	17497	34.00%
May-26	7417	14.48%	4769	64.30%	2650	35.73%	5383	10.51%	17482	34.12%
Jun-26	7413	14.42%	4740	63.94%	2676	36.10%	5395	10.50%	17509	34.07%

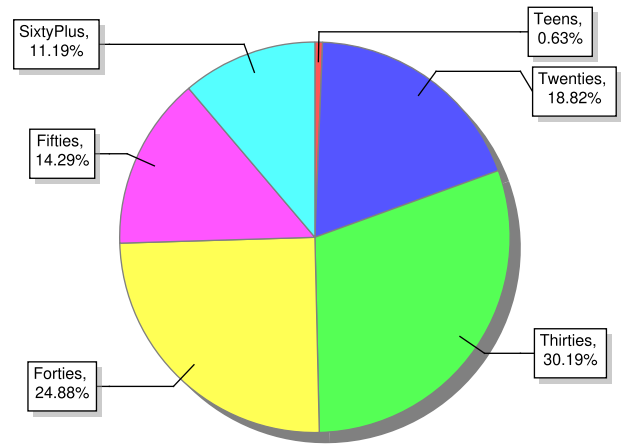
Overview of inmate age statistics, Jan-2000 to Jun-2026

The "aging inmate population" is a concern in correctional systems throughout America, including Georgia. Here, the increase in inmate age is the result of several factors. Teenagers have been steered away from prison by increased usage of probation and other alternatives, at least for their first convictions. And there has been a surge of middle-aged male sex offenders due to the expanding "It's OK to tell" ethos. But most importantly, more severe sentence lengths and release policies have greatly increased the length of time that most offenders -- especially violent ones -- spend in prison, thereby increasing their average age.

Average age since 2000



Current Age



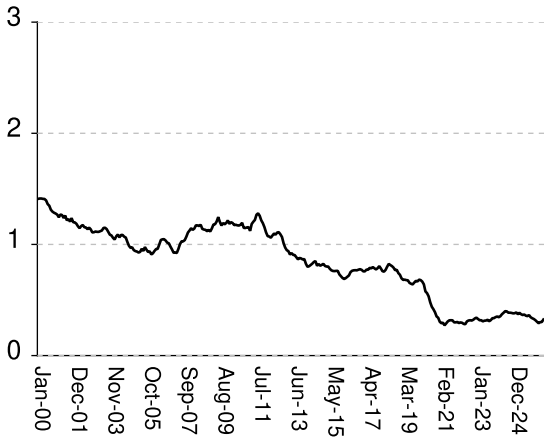
Jun-2026

Average age of active inmates	RISES BY	.01	from	42.37	to	42.38
Number in their teens	RISES BY	22	from	302	to	324
Percentage in their teens	RISES BY	.04%	from	.59%	to	.63%
Number in their twenties	RISES BY	35	from	9,638	to	9,673
Percentage in their twenties	RISES BY	.01%	from	18.81%	to	18.82%
Number in their thirties	falls by	12	from	15,534	to	15,522
Percentage in their thirties	falls by	.12%	from	30.32%	to	30.2%
Number in their forties	RISES BY	51	from	12,737	to	12,788
Percentage in their forties	RISES BY	.02%	from	24.86%	to	24.88%
Number in their fifties	RISES BY	23	from	7,322	to	7,345
Percentage in their fifties	level	at	14.29%
Number age sixty and up	RISES BY	43	from	5,711	to	5,754
Percentage age sixty and up	RISES BY	.05%	from	11.15%	to	11.2%

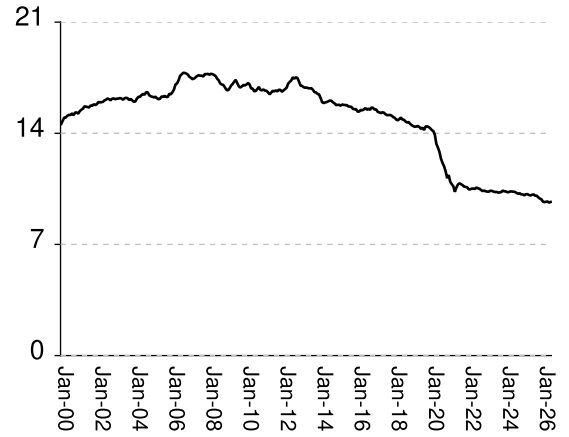
Monthly counts of inmates by age group, Jan-2000 to Jun-2026

Y-axis of Twenties/Thirties/Forties/Fifties runs from 0 to 21,000. Y-axis of Teens/Sixty+ runs from 0 to 3,000.

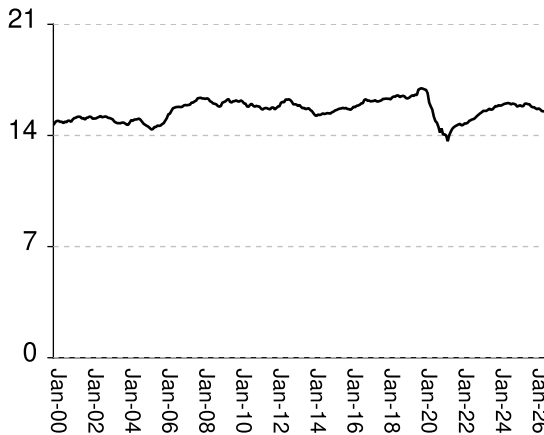
Teens x 1000



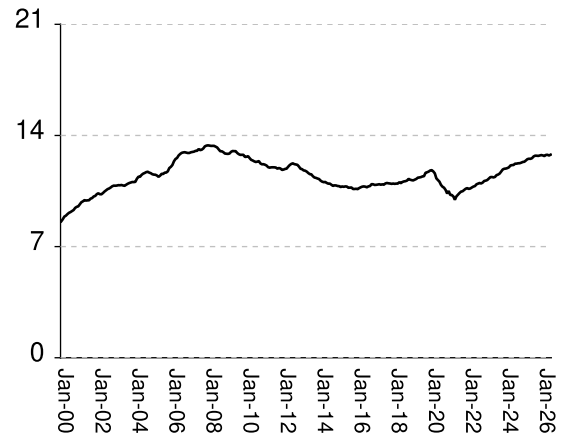
Twenties x 1000



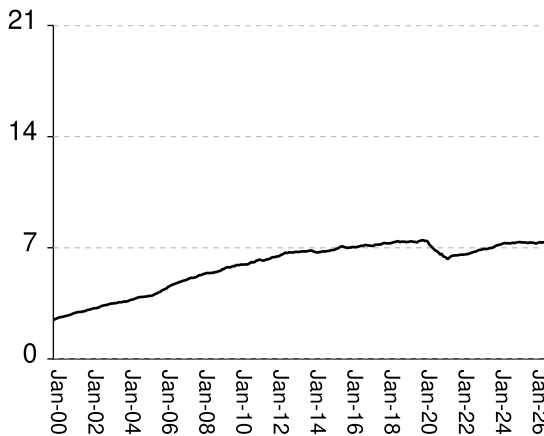
Thirties x 1000



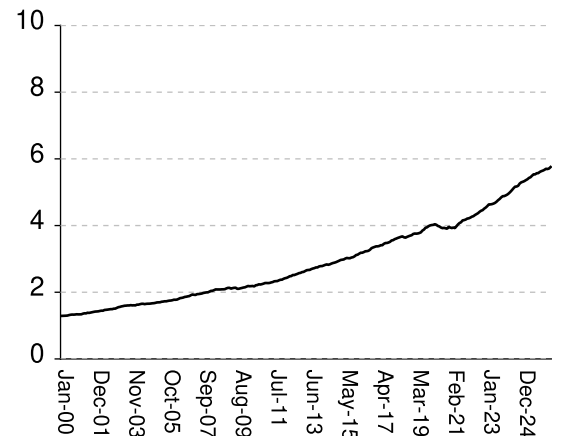
Forties x 1000



Fifties x 1000



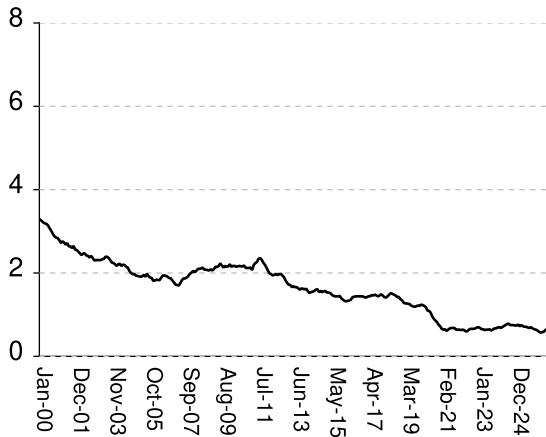
Sixty & Up x 1000



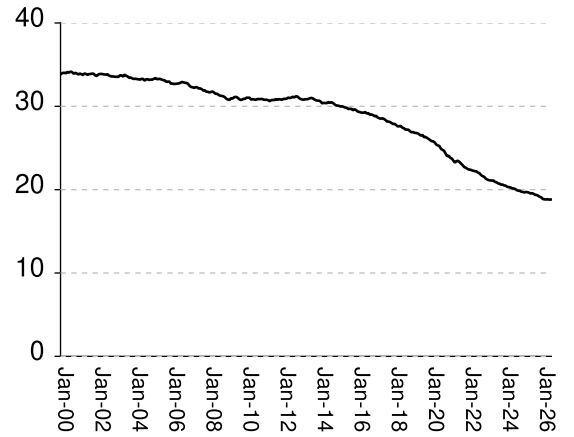
Monthly percentages of inmates by age group, Jan-2000 to Jun-2026

Y-axis of Twenties/Thirties/Forties/Fifties runs from 0% to 40%. Y-axis of Teens/Sixty+ runs from 0% to 8%

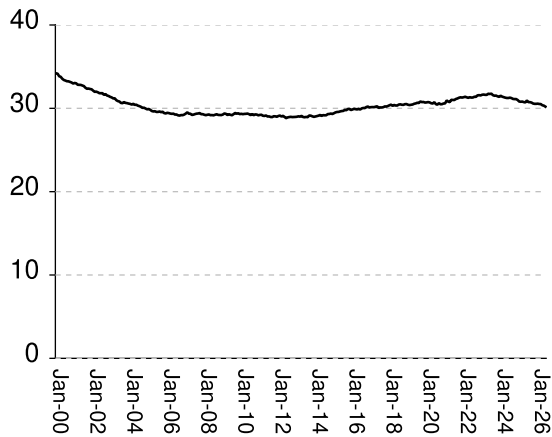
Teens (%)



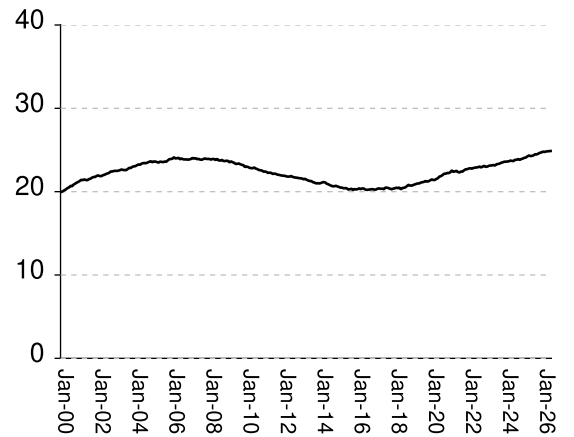
Twenties (%)



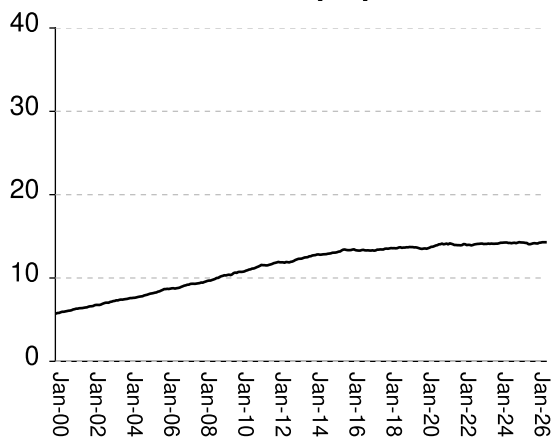
Thirties (%)



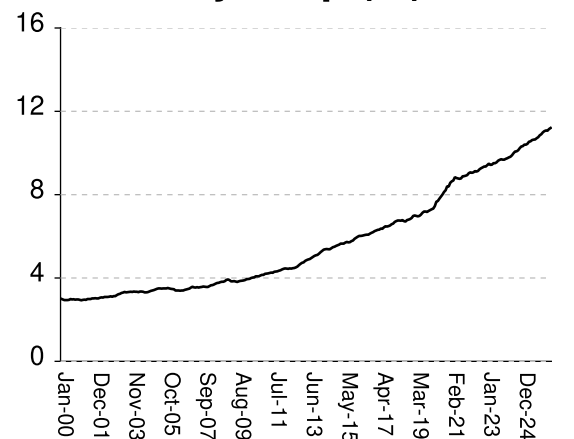
Forties (%)



Fifties (%)



Sixty & Up (%)

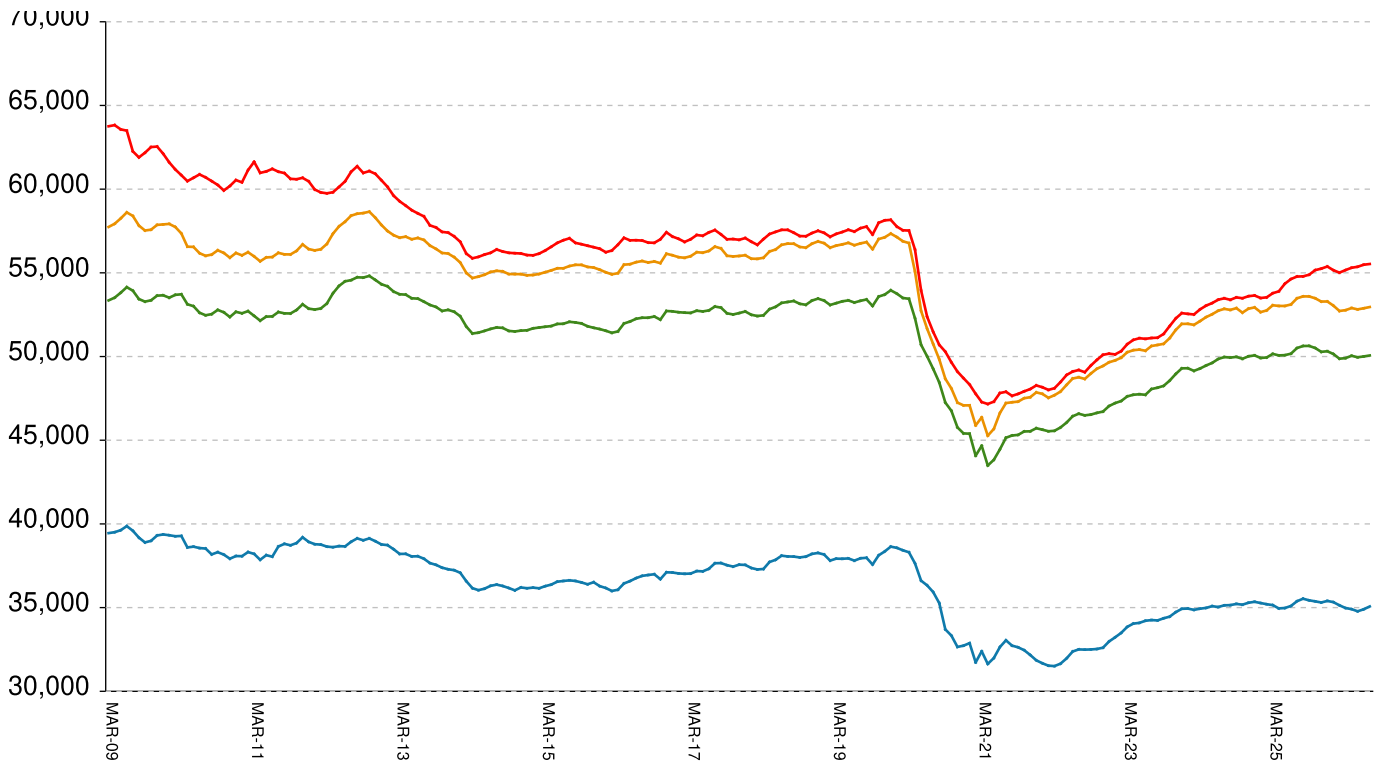


Inmate counts & percentages by age, for past 48 months

Month	Avg Age	Teens		Twenties		Thirties		Forties		Fifties		Sixty & Up	
		Number	Percent	Number	Percent	Number	Percent	Number	Percent	Number	Percent	Number	Percent
Jul-22	40.96	315	0.66%	10536	22.04%	14965	31.30%	10965	22.93%	6675	13.96%	4371	9.14%
Aug-22	40.99	318	0.66%	10504	21.96%	15016	31.39%	11006	23.01%	6711	14.03%	4412	9.22%
Sep-22	41.04	315	0.66%	10422	21.75%	15038	31.38%	10977	22.91%	6739	14.06%	4444	9.27%
Oct-22	41.06	322	0.67%	10364	21.62%	15125	31.55%	11031	23.01%	6754	14.09%	4462	9.31%
Nov-22	41.08	334	0.69%	10387	21.54%	15226	31.58%	11133	23.09%	6801	14.10%	4507	9.35%
Dec-22	41.11	341	0.70%	10347	21.32%	15310	31.55%	11155	22.98%	6853	14.12%	4540	9.35%
Jan-23	41.14	329	0.68%	10325	21.22%	15390	31.63%	11194	23.01%	6872	14.13%	4583	9.42%
Feb-23	41.17	318	0.65%	10327	21.14%	15458	31.65%	11286	23.10%	6876	14.08%	4634	9.49%
Mar-23	41.16	318	0.65%	10380	21.11%	15546	31.62%	11375	23.14%	6926	14.09%	4634	9.43%
Apr-23	41.19	308	0.63%	10372	21.09%	15547	31.62%	11383	23.15%	6929	14.09%	4642	9.44%
May-23	41.21	314	0.64%	10327	21.09%	15547	31.75%	11358	23.20%	6919	14.13%	4658	9.51%
Jun-23	41.24	315	0.64%	10300	20.93%	15611	31.72%	11389	23.14%	6938	14.10%	4680	9.51%
Jul-23	41.28	322	0.65%	10309	20.88%	15682	31.76%	11501	23.29%	6978	14.13%	4715	9.55%
Aug-23	41.34	309	0.62%	10264	20.75%	15622	31.58%	11536	23.32%	6979	14.11%	4761	9.63%
Sep-23	41.35	319	0.64%	10279	20.71%	15639	31.51%	11600	23.37%	7004	14.11%	4797	9.67%
Oct-23	41.37	336	0.67%	10291	20.60%	15751	31.53%	11727	23.47%	7054	14.12%	4845	9.70%
Nov-23	41.39	337	0.67%	10385	20.60%	15852	31.44%	11857	23.52%	7120	14.12%	4881	9.68%
Dec-23	41.42	346	0.69%	10351	20.51%	15831	31.38%	11903	23.59%	7151	14.17%	4884	9.68%
Jan-24	41.44	351	0.70%	10335	20.47%	15906	31.51%	11915	23.60%	7182	14.23%	4905	9.72%
Feb-24	41.48	345	0.68%	10286	20.34%	15877	31.40%	11945	23.62%	7194	14.23%	4930	9.75%
Mar-24	41.5	354	0.70%	10300	20.30%	15899	31.34%	11993	23.64%	7232	14.25%	4967	9.79%
Apr-24	41.53	372	0.73%	10339	20.26%	15959	31.28%	12110	23.73%	7274	14.26%	5013	9.82%
May-24	41.55	385	0.75%	10334	20.18%	16000	31.24%	12133	23.69%	7304	14.26%	5064	9.89%
Jun-24	41.58	399	0.78%	10319	20.13%	16016	31.24%	12141	23.68%	7279	14.20%	5119	9.99%
Jul-24	41.62	398	0.78%	10307	20.09%	16044	31.28%	12220	23.82%	7291	14.21%	5166	10.07%
Aug-24	41.65	386	0.75%	10238	19.95%	16024	31.23%	12225	23.83%	7273	14.17%	5170	10.08%
Sep-24	41.69	386	0.75%	10192	19.88%	15958	31.13%	12248	23.90%	7285	14.21%	5193	10.13%
Oct-24	41.71	384	0.75%	10221	19.87%	16005	31.11%	12253	23.82%	7322	14.23%	5260	10.23%
Nov-24	41.76	380	0.74%	10154	19.76%	15989	31.11%	12286	23.91%	7288	14.18%	5296	10.31%
Dec-24	41.79	381	0.74%	10145	19.72%	15947	31.00%	12330	23.97%	7325	14.24%	5313	10.33%
Jan-25	41.84	388	0.76%	10092	19.67%	15813	30.82%	12344	24.06%	7335	14.30%	5333	10.40%
Feb-25	41.84	372	0.72%	10163	19.72%	15868	30.79%	12423	24.10%	7357	14.27%	5362	10.40%
Mar-25	41.86	385	0.75%	10164	19.70%	15897	30.81%	12508	24.24%	7359	14.26%	5388	10.44%
Apr-25	41.91	372	0.72%	10113	19.64%	15839	30.75%	12534	24.34%	7338	14.25%	5428	10.54%
May-25	41.94	365	0.71%	10086	19.54%	15852	30.71%	12528	24.27%	7332	14.21%	5449	10.56%
Jun-25	41.94	369	0.71%	10126	19.58%	16003	30.94%	12570	24.30%	7344	14.20%	5495	10.62%
Jul-25	41.96	359	0.69%	10151	19.50%	16003	30.75%	12678	24.36%	7319	14.06%	5536	10.64%
Aug-25	41.98	355	0.68%	10068	19.38%	15974	30.74%	12726	24.49%	7302	14.05%	5536	10.65%
Sep-25	42.01	364	0.70%	10070	19.36%	15958	30.69%	12724	24.47%	7334	14.10%	5569	10.71%
Oct-25	42.06	345	0.67%	9969	19.26%	15831	30.58%	12714	24.56%	7330	14.16%	5572	10.76%
Nov-25	42.12	336	0.65%	9892	19.15%	15777	30.54%	12737	24.66%	7324	14.18%	5607	10.85%
Dec-25	42.15	329	0.64%	9852	19.07%	15774	30.54%	12764	24.71%	7307	14.15%	5631	10.90%
Jan-26	42.23	318	0.62%	9702	18.88%	15699	30.56%	12741	24.80%	7266	14.14%	5647	10.99%
Feb-26	42.28	304	0.59%	9662	18.84%	15657	30.52%	12703	24.76%	7298	14.23%	5670	11.05%
Mar-26	42.3	291	0.57%	9685	18.82%	15701	30.51%	12775	24.82%	7335	14.25%	5702	11.08%
Apr-26	42.32	301	0.58%	9702	18.85%	15632	30.37%	12782	24.84%	7353	14.29%	5695	11.07%
May-26	42.37	302	0.59%	9638	18.81%	15534	30.32%	12737	24.86%	7322	14.29%	5711	11.15%
Jun-26	42.38	324	0.63%	9673	18.82%	15522	30.20%	12788	24.88%	7345	14.29%	5754	11.20%

All housed offenders under GDC jurisdiction

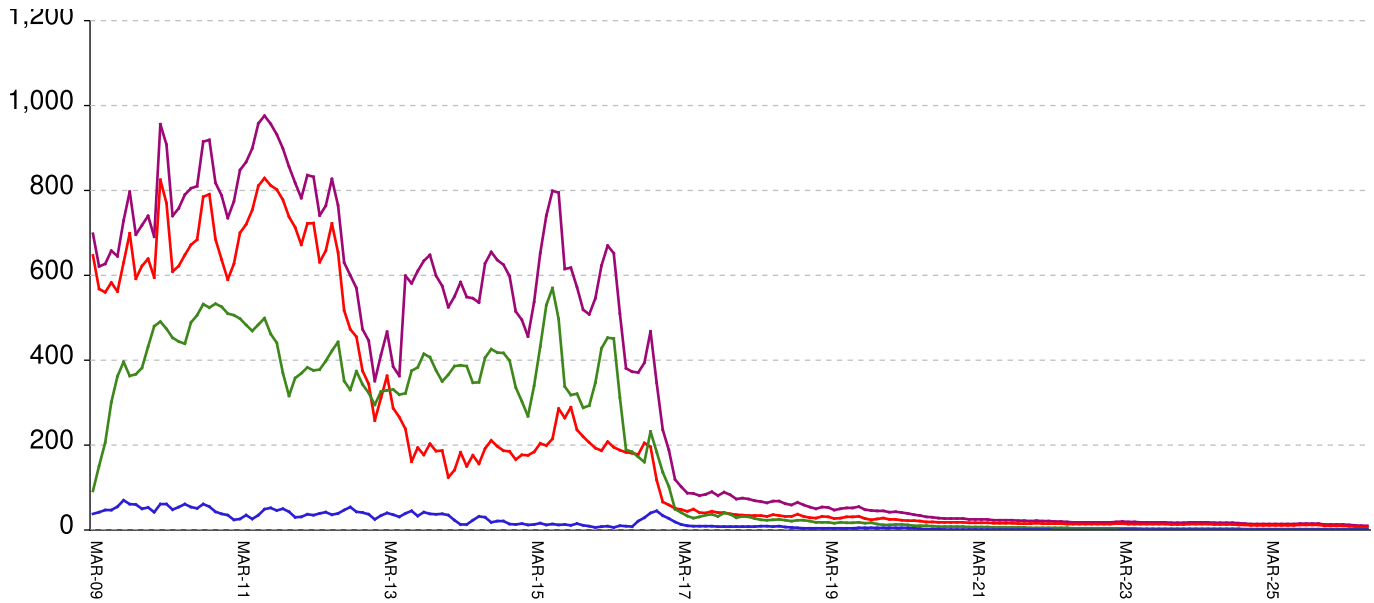
March 20, 2009 through July 03, 2026



All in bed + probs in jail + backlog	RISES BY	25	from	55,503	to	55,528
Probationers in jail	10	at	10
Inmate jail backlog	RISES BY	25	from	2,536	to	2,561
All in beds: inmate + Prob + parole	52,957	at	52,957
Total probationers in beds	RISES BY	18	from	2,875	to	2,893
Probation detention centers	RISES BY	14	from	1,410	to	1,424
Probation boot camps	falls by	...	from		to	
Probation RSAT	RISES BY	4	from	1,465	to	1,469
Parole revocation centers	falls by	...	from		to	
All in inmate beds: state + other	falls by	18	from	50,082	to	50,064
Other inmate facilities:	falls by	44	from	15,038	to	14,994
Inmate boot camps	0	at	0
Private prisons	falls by	3	from	8,174	to	8,171
County prisons	falls by	33	from	4,141	to	4,108
Transitional centers	falls by	8	from	2,723	to	2,715
In state prisons only	RISES BY	26	from	35,044	to	35,070

Probationers in jail awaiting placement in facilities

March 20, 2009 through July 03, 2026



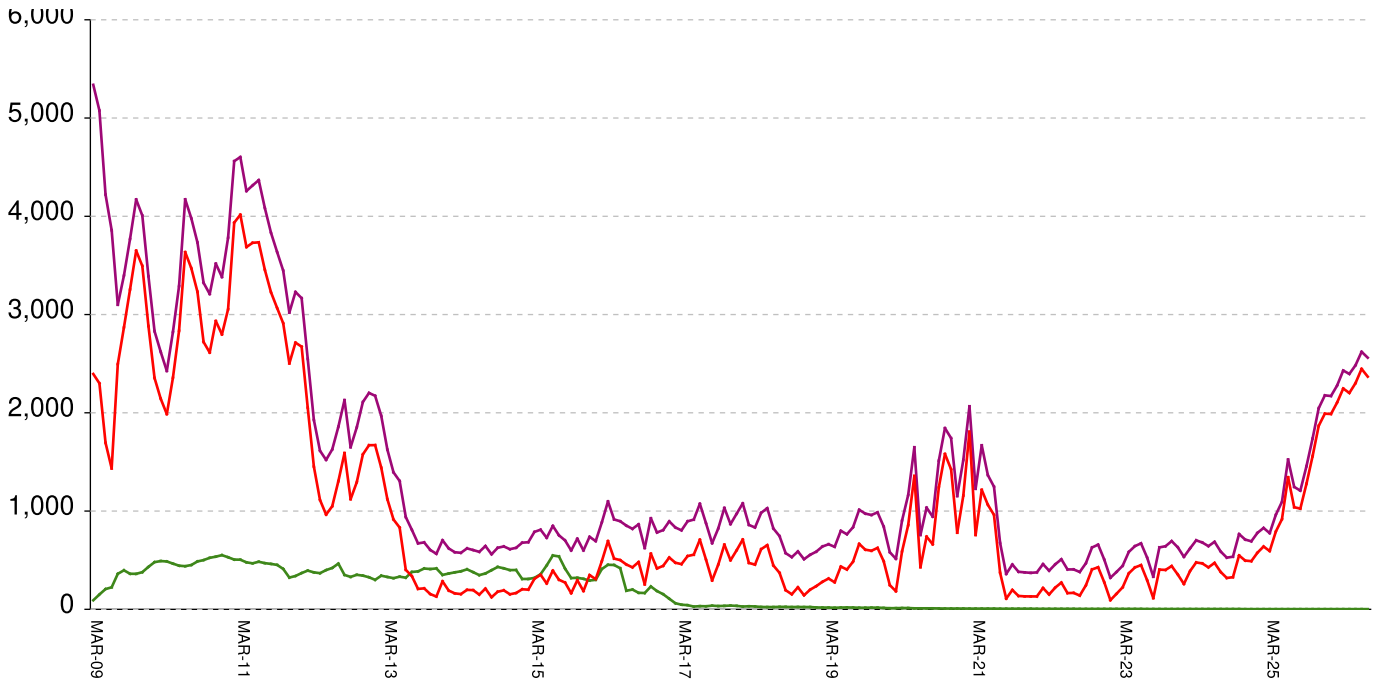
This graph shows, for each Friday since March 20 2009, the number of sentenced felony probationers who were waiting in jail for placement in facilities that GDC operates for housing probationers -- detention centers, probation residential substance abuse treatment (RSAT) centers, and probation boot camps. Counts include both those offenders sentenced directly from court, and those whose street probation was revoked.

Total probationers waiting in jail	level	at	10
...waiting for detention centers	level	at	7
...waiting for probation RSAT	level	at	2
...waiting for probation boot camps	level	at	1

The highest number of probationers waiting in jail was 994 on 05-MAR-10
 ...highest number waiting for detention centers was 859 on 05-MAR-10
 ...highest number waiting for probation RSAT was 592 on 10-JUL-15
 ...highest number waiting for probation boot camps was 70 on 18-SEP-09

State inmates in jail awaiting placement in facilities

March 20, 2009 through July 03, 2026



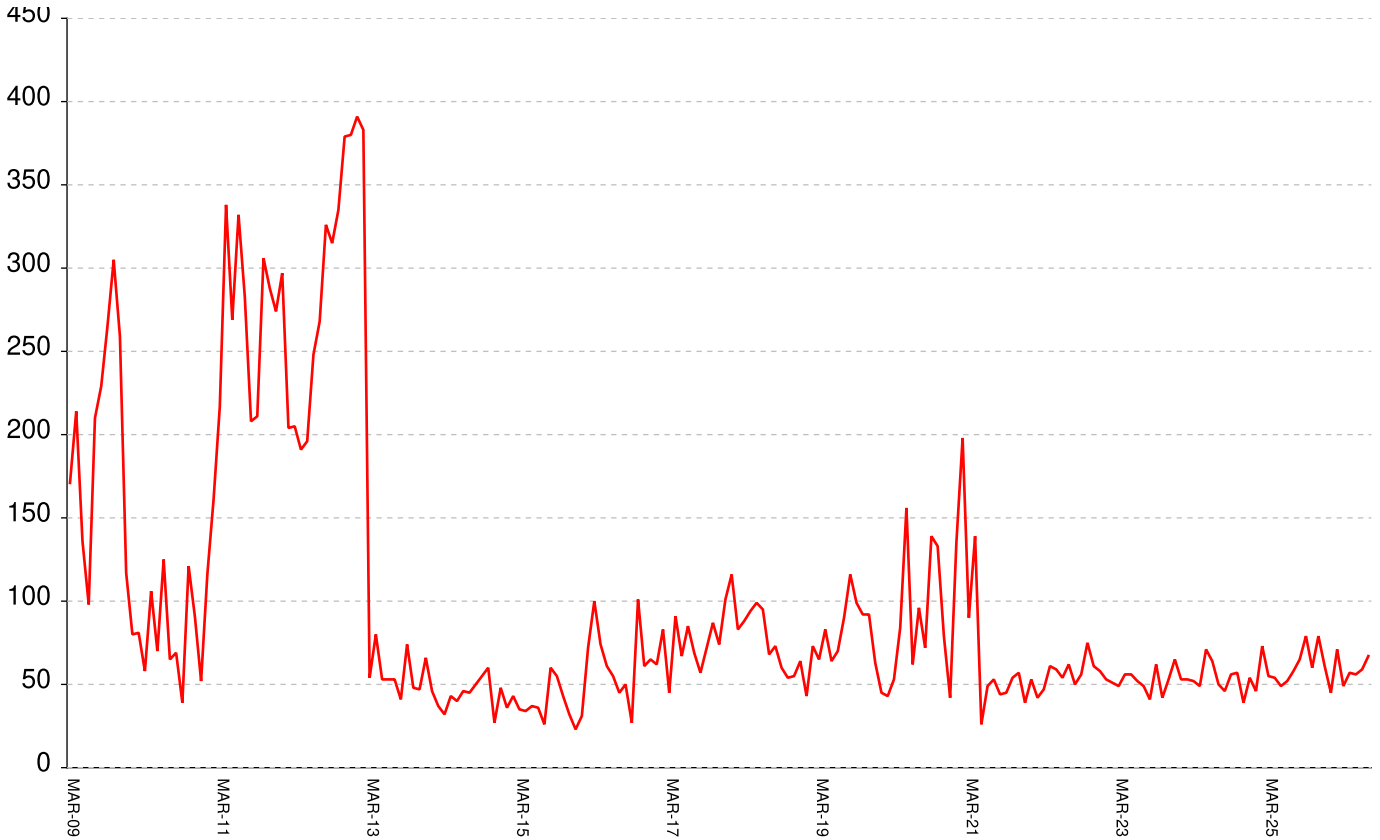
This graph shows, for each Friday since March 2009, the number of prisoners, probationers, and parolees in local jails who have been sentenced or revoked to state prison and whose documents have been received and verified by GDC. Most are almost immediately assigned to a diagnostic center, and are designated as in "admission processing". Of those a few hundred may be in the "transportation delayed" category because there is no room in the assigned diagnostic center, or because the inmate is being held for medical reasons, or for other court proceedings, or other reasons. Those remaining are "ready to be picked up".

Total state inmates waiting in jail	RISES BY	25	from	2536	to	2561
... not yet assigned to a diagnostic center	level	at	10
... total "in admission processing"	RISES BY	25	from	2526	to	2551
... with "transportation delayed"	level	at	183
... ready to be picked up	RISES BY	25	from	2343	to	2368

The highest number of state inmates waiting in jail was 5338 on 27-MAR-09
 ... highest number not asg to a diagnostic center was 2881 on 12-JUN-09
 ... highest number in admission processing was 4916 on 25-MAR-11
 ... highest number with transportation delayed was 645 on 14-JAN-11
 ... highest number ready to be pickup was 4435 on 25-MAR-11

Female state inmates in jail awaiting pickup

March 20, 2009 through July 03, 2026



This graph shows, for each Friday since March 2009, the number of female state prisoners in local jails who were assigned to diagnostic centers but had not yet been picked up.

Female state inmates in jails waiting picked up **67** **at** **67**

The highest number of female inmates waiting in jail was 424 on 01-FEB-13

The lowest number of female inmates waiting in jail was 17 on 20-MAR-20

Summary of housed prisoners, parolees, and probationers

Week Ending	Prison	Parole	Probation			Prison+parole +probation	Jail		Total
	Total inmates	Revocation centers	Prob RSAT	Boot camp	Detention		Inmate backlog	Probationers	Prison+parole +probation+jail
11-Jul-2025	50529		1433		1531	53493	1191	14	54698
18-Jul-2025	50525		1462		1492	53479	1246	14	54739
25-Jul-2025	50570		1485		1514	53569	1318	14	54901
01-Aug-2025	50604		1492		1499	53595	1266	14	54875
08-Aug-2025	50586		1483		1482	53551	1112	14	54677
15-Aug-2025	50624		1487		1483	53594	1113	14	54721
22-Aug-2025	50654		1478		1463	53595	1204	15	54814
29-Aug-2025	50683		1491		1461	53635	1208	15	54858
05-Sep-2025	50623		1491		1458	53572	1164	15	54751
12-Sep-2025	50671		1504		1474	53649	1168	15	54832
19-Sep-2025	50604		1479		1477	53560	1350	15	54925
26-Sep-2025	50642		1490		1446	53578	1456	15	55049
03-Oct-2025	50592		1496		1426	53514	1545	15	55074
10-Oct-2025	50542		1502		1438	53482	1568	15	55065
17-Oct-2025	50565		1526		1461	53552	1619	15	55186
24-Oct-2025	50468		1540		1470	53478	1738	15	55231
31-Oct-2025	50381		1483		1513	53377	1861	15	55253
07-Nov-2025	50231		1503		1493	53227	1898	15	55140
14-Nov-2025	50276		1516		1485	53277	1907	15	55199
21-Nov-2025	50343		1512		1498	53353	1956	15	55324
28-Nov-2025	50271		1495		1515	53281	2047	15	55343
05-Dec-2025	50325		1472		1501	53298	1989	14	55301
12-Dec-2025	50317		1481		1499	53297	2063	13	55373
19-Dec-2025	50326		1503		1474	53303	2078	13	55394
26-Dec-2025	50291		1493		1474	53258	2177	13	55448
02-Jan-2026	50238		1475		1427	53140	2171	13	55324
09-Jan-2026	50250		1479		1429	53158	1965	13	55136
16-Jan-2026	50195		1483		1436	53114	2042	13	55169
23-Jan-2026	50092		1469		1430	52991	2157	13	55161
30-Jan-2026	49980		1465		1364	52809	2182	13	55004
06-Feb-2026	49874		1475		1390	52739	2212	13	54964
13-Feb-2026	49848		1464		1399	52711	2277	13	55001
20-Feb-2026	49860		1455		1374	52689	2304	13	55006
27-Feb-2026	49899		1447		1403	52749	2316	13	55078
06-Mar-2026	49854		1448		1412	52714	2364	13	55091
13-Mar-2026	49912		1458		1410	52780	2360	13	55153
20-Mar-2026	49857		1468		1406	52731	2430	13	55174
27-Mar-2026	49997		1464		1394	52855	2372	13	55240
03-Apr-2026	50055		1464		1396	52915	2389	13	55317
10-Apr-2026	50068		1461		1400	52929	2396	12	55337
17-Apr-2026	50094		1462		1382	52938	2357	12	55307
24-Apr-2026	49963		1478		1363	52804	2440	12	55256
01-May-2026	50043		1482		1387	52912	2481	12	55405
08-May-2026	49954		1477		1379	52810	2483	11	55304
15-May-2026	49952		1477		1372	52801	2530	11	55342
22-May-2026	49906		1478		1387	52771	2582	11	55364
29-May-2026	49923		1480		1390	52793	2591	11	55395
05-Jun-2026	49944		1481		1411	52836	2621	10	55467
12-Jun-2026	49950		1460		1397	52807	2656	10	55473
19-Jun-2026	50046		1468		1416	52930	2558	10	55498
26-Jun-2026	50082		1465		1410	52957	2536	10	55503
03-Jul-2026	50064		1469		1424	52957	2561	10	55528

Offenders housed in facilities for state prisoners

Week ending	In facilities other than state prisons							Total Inmates
	In state prisons	Transition centers	County prisons	Pre-rel centers	Private prisons	Inmate boot camps	Total others	
11-Jul-2025	35380	2669	4436		8044	0	15149	50529
18-Jul-2025	35399	2690	4400		8036	0	15126	50525
25-Jul-2025	35464	2698	4363		8045	0	15106	50570
01-Aug-2025	35516	2709	4347		8032	0	15088	50604
08-Aug-2025	35507	2698	4347		8034	0	15079	50586
15-Aug-2025	35522	2714	4349		8039	0	15102	50624
22-Aug-2025	35539	2726	4348		8041	0	15115	50654
29-Aug-2025	35576	2714	4352		8041	0	15107	50683
05-Sep-2025	35478	2721	4352		8072	0	15145	50623
12-Sep-2025	35437	2739	4396		8099	0	15234	50671
19-Sep-2025	35399	2749	4378		8078	0	15205	50604
26-Sep-2025	35420	2732	4384		8106	0	15222	50642
03-Oct-2025	35389	2727	4371		8105	0	15203	50592
10-Oct-2025	35390	2705	4350		8097	0	15152	50542
17-Oct-2025	35402	2716	4337		8110	0	15163	50565
24-Oct-2025	35359	2744	4297		8068	0	15109	50468
31-Oct-2025	35328	2751	4237		8065	0	15053	50381
07-Nov-2025	35288	2748	4167		8028	0	14943	50231
14-Nov-2025	35293	2750	4193		8040	0	14983	50276
21-Nov-2025	35342	2756	4211		8034	0	15001	50343
28-Nov-2025	35305	2745	4168		8053	0	14966	50271
05-Dec-2025	35396	2746	4134		8049	0	14929	50325
12-Dec-2025	35370	2759	4130		8058	0	14947	50317
19-Dec-2025	35414	2755	4107		8049	1	14912	50326
26-Dec-2025	35409	2737	4082		8062	1	14882	50291
02-Jan-2026	35371	2745	4056		8065	1	14867	50238
09-Jan-2026	35363	2780	4032		8074	1	14887	50250
16-Jan-2026	35354	2745	3988		8107	1	14841	50195
23-Jan-2026	35302	2731	3960		8098	1	14790	50092
30-Jan-2026	35249	2730	3926		8074	1	14731	49980
06-Feb-2026	35179	2729	3891		8074	1	14695	49874
13-Feb-2026	35121	2721	3906		8099	1	14727	49848
20-Feb-2026	35112	2747	3898		8102	1	14748	49860
27-Feb-2026	35132	2750	3907		8109	1	14767	49899
06-Mar-2026	35106	2739	3932		8076	1	14748	49854
13-Mar-2026	35010	2751	4084		8066	1	14902	49912
20-Mar-2026	34880	2758	4146		8072	1	14977	49857
27-Mar-2026	34907	2761	4212		8116	1	15090	49997
03-Apr-2026	34940	2757	4236		8122	0	15115	50055
10-Apr-2026	34946	2755	4263		8104	0	15122	50068
17-Apr-2026	34929	2777	4289		8099	0	15165	50094
24-Apr-2026	34821	2773	4275		8094	0	15142	49963
01-May-2026	34845	2792	4297		8109	0	15198	50043
08-May-2026	34785	2787	4284		8098	0	15169	49954
15-May-2026	34761	2794	4289		8108	0	15191	49952
22-May-2026	34745	2800	4272		8089	0	15161	49906
29-May-2026	34768	2800	4260		8095	0	15155	49923
05-Jun-2026	34797	2811	4250		8086	0	15147	49944
12-Jun-2026	34841	2819	4211		8079	0	15109	49950
19-Jun-2026	34920	2800	4176		8150	0	15126	50046
26-Jun-2026	35044	2723	4141		8174	0	15038	50082
03-Jul-2026	35070	2715	4108		8171	0	14994	50064

Offenders waiting in local jails for state facilities

Week ending	Probationers waiting in jail				Probationers waiting in jail					Assigned females
	.. for PDCs	.. for RSAT	.. for boot camps	Total	Total backlog	Not yet assigned	In adm process	Delayed transport	Ready for pickup	
11-Jul-2025	11	2	1	14	1191	9	1182	201	981	50
18-Jul-2025	11	2	1	14	1246	9	1237	198	1039	58
25-Jul-2025	11	2	1	14	1318	9	1309	203	1106	70
01-Aug-2025	11	2	1	14	1266	9	1257	192	1065	59
08-Aug-2025	11	2	1	14	1112	11	1101	177	924	40
15-Aug-2025	11	2	1	14	1113	10	1103	174	929	51
22-Aug-2025	12	2	1	15	1204	10	1194	171	1023	60
29-Aug-2025	12	2	1	15	1208	8	1200	175	1025	65
05-Sep-2025	12	2	1	15	1164	8	1156	177	979	63
12-Sep-2025	12	2	1	15	1168	8	1160	178	982	68
19-Sep-2025	12	2	1	15	1350	8	1342	176	1166	61
26-Sep-2025	12	2	1	15	1456	9	1447	169	1278	79
03-Oct-2025	12	2	1	15	1545	8	1537	169	1368	75
10-Oct-2025	12	2	1	15	1568	8	1560	171	1389	66
17-Oct-2025	12	2	1	15	1619	9	1610	171	1439	73
24-Oct-2025	12	2	1	15	1738	8	1730	172	1558	60
31-Oct-2025	12	2	1	15	1861	10	1851	167	1684	53
07-Nov-2025	12	2	1	15	1898	11	1887	168	1719	58
14-Nov-2025	12	2	1	15	1907	12	1895	169	1726	67
21-Nov-2025	12	2	1	15	1956	11	1945	175	1770	86
28-Nov-2025	12	2	1	15	2047	11	2036	168	1868	79
05-Dec-2025	11	2	1	14	1989	10	1979	171	1808	72
12-Dec-2025	10	2	1	13	2063	11	2052	172	1880	79
19-Dec-2025	10	2	1	13	2078	11	2067	172	1895	53
26-Dec-2025	10	2	1	13	2177	11	2166	175	1991	61
02-Jan-2026	10	2	1	13	2171	11	2160	172	1988	45
09-Jan-2026	10	2	1	13	1965	10	1955	175	1780	34
16-Jan-2026	10	2	1	13	2042	9	2033	175	1858	59
23-Jan-2026	10	2	1	13	2157	9	2148	170	1978	69
30-Jan-2026	10	2	1	13	2182	9	2173	168	2005	52
06-Feb-2026	10	2	1	13	2212	9	2203	164	2039	61
13-Feb-2026	10	2	1	13	2277	9	2268	164	2104	71
20-Feb-2026	10	2	1	13	2304	9	2295	167	2128	64
27-Feb-2026	10	2	1	13	2316	9	2307	168	2139	47
06-Mar-2026	10	2	1	13	2364	9	2355	172	2183	66
13-Mar-2026	10	2	1	13	2360	10	2350	174	2176	76
20-Mar-2026	10	2	1	13	2430	10	2420	173	2247	49
27-Mar-2026	10	2	1	13	2372	10	2362	172	2190	62
03-Apr-2026	10	2	1	13	2389	10	2379	177	2202	69
10-Apr-2026	9	2	1	12	2396	11	2385	183	2202	57
17-Apr-2026	9	2	1	12	2357	11	2346	180	2166	53
24-Apr-2026	9	2	1	12	2440	13	2427	178	2249	55
01-May-2026	9	2	1	12	2481	12	2469	178	2291	67
08-May-2026	8	2	1	11	2483	11	2472	171	2301	56
15-May-2026	8	2	1	11	2530	11	2519	173	2346	67
22-May-2026	8	2	1	11	2582	11	2571	175	2396	70
29-May-2026	8	2	1	11	2591	11	2580	166	2414	65
05-Jun-2026	7	2	1	10	2621	11	2610	163	2447	59
12-Jun-2026	7	2	1	10	2656	10	2646	163	2483	65
19-Jun-2026	7	2	1	10	2558	10	2548	173	2375	67
26-Jun-2026	7	2	1	10	2536	10	2526	183	2343	67
03-Jul-2026	7	2	1	10	2561	10	2551	183	2368	67