

# Friday Report - overview and contents

The pages in The Friday Report are about adult offenders in Georgia's prisons and jails. They contain statistical snapshots and trends in the populations and movements of offenders in the state prison system, on probation, on parole, and in local jails. Information comes from databases of the Georgia Department of Corrections (GDC) and the Board of Pardons and Paroles, and from data provided by local jailers. Information is summarized into tables in the GDC/Parole Data Warehouse, and is extracted into these pages each Friday. Pages are organized according to the table that supplied the data.

<p><b>The Monthly Research Table</b>, named "MO_RESRCH" or simply "MO", contains data about state prisoners, grouped into statistically interesting categories. The table contains one record per month, from January 2000 to the present. Despite its being "monthly", it is updated weekly, because some data trickles in for several weeks before it becomes stable history.</p>	
Page	Content
MO-01	Clemencies and maxouts. Monthly graph from 2000 to present shows the monthly departures from prison via actions by the Georgia Parole Board (clemencies), and via service of 100% of the court ordered sentence (maxouts)
MO-02	48 months of releases. Table shows counts and percentages of releases via clemencies and maxouts, with and without probation to follow, for each of the past 48 months.
MO-03	Methamphetamine. Monthly graph from 2000 to present shows admissions, departures, population, and percent of population of inmates with a current offense of methamphetamine possession, sale, manufacturing, or trafficking, and the changing racial composition of the methamphetamine population
MO-04	Non-violent first incarcerants. Monthly graph from 2000 to present shows admissions, departures, population, and percent of population of inmates without violent or sex crimes, who are serving their first Georgia felony incarceration.
MO-05	Seven Deadly Sins. Monthly graph from 2000 to present shows admissions, departures, population, and percent of population of inmates convicted of kidnapping, armed robbery, rape, aggravated sodomy, aggravated sexual battery, and aggravated child molestation, for whom especially severe penalties are prescribed.
MO-06	48 months of inmate subpopulations. Table shows number and percentage of white and non-white inmates with methamphetamine offenses, and non-violent first incarcerants, and inmates convicted of the Seven Deadly Sins.
MO-07	Inmate age overview. Line graph shows the average age of the inmate population, by month from 2000 to the present. Pie chart shows the number of currently active inmates in their teens, twenties, thirties, forties, fifties, and age sixty+.
MO-08	Counts by age group. Graphs show the count, by month from 2000 to the present, of inmates in their teens, twenties, thirties, forties, fifties, and age sixty+.
MO-09	Percentages by age group. Graphs show the percentages, by month from 2000 to the present, of inmates in their teens, twenties, thirties, forties, fifties, and age sixty+.
MO-10	48 months of inmate ages. Table shows average age of the standing population, and counts and percentages of teens, twenties, thirties, forties, fifties, and sixty+, for each of the past 48 months.

# Friday Report - overview and contents (continued)

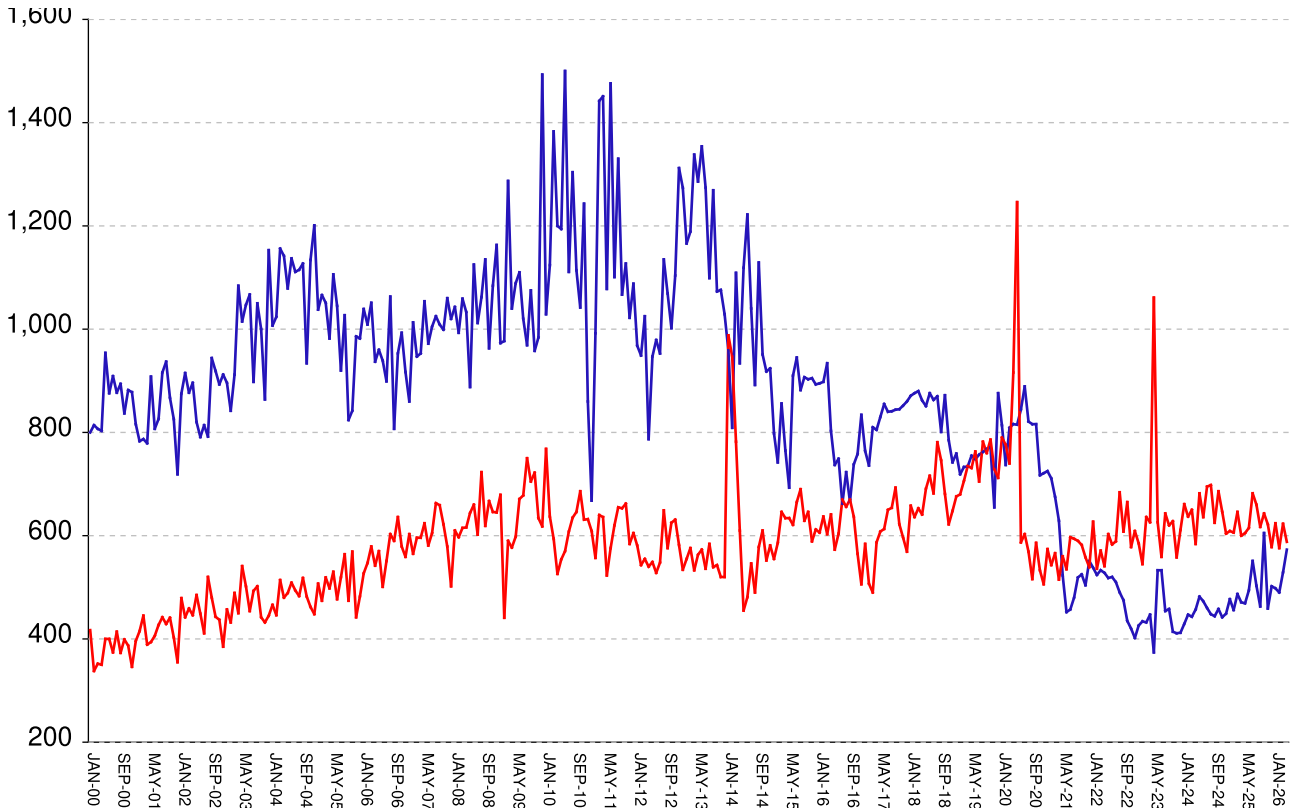
**The MSR Table** is based on the Management Summary Report (MSR), a snapshot report posted each week in GDC's Scribe database. MSR\_RESRCH gathers that data into weekly trends, with one record for each Friday since March 20th, 2009

Page	Content
<b>MSR-01</b>	All housed offenders. Weekly graph from March 20, 2009 to present, showing counts of inmates in state prisons, transitional centers, county prisons, private prisons, inmate boot camps, parole revocation centers, probation Residential Substance Abuse Treatment (RSAT), probation boot camps, probation detention centers, plus the inmate jail backlog and probationers in jail waiting for state facilities.
<b>MSR-02</b>	Probationers in jail. Weekly graph from March 20, 2009 to present, showing counts of probationers in local jails awaiting placement in probation detention centers, probation RSAT centers, and probation boot camps.
<b>MSR-03</b>	State inmates in jail. Weekly graph from March 20, 2009 to present, showing counts of state inmates in local jails awaiting placement in state prison facilities – including those who have not yet been assigned to a diagnostic center, those whose transportation has been delayed for some reason, and those who are ready to be picked up.
<b>MSR-04</b>	Female state inmates in jail. Weekly graph from March 20, 2009 to present, showing counts of female state inmates awaiting placement in a state prison for females.
<b>MSR-05</b>	52-week table: housed offenders. Data for each of the past 52 weeks, showing total prison inmates, parolees in revocation centers, probationers in RSAT/boot camp/detention centers, inmate jail backlog, probationers in jail waiting for facilities, with subtotals.
<b>MSR-06</b>	52-week table: state prisoners. Data for each of the past 52 weeks, showing inmates in state prisons, transition centers, county prisons, pre-release centers, private prisons, and inmate boot camps, with subtotals.
<b>MSR-07</b>	52-week table: waiting in jail. Data for each of the past 52 weeks, showing probationers waiting for detention centers, RSAT, and boot camp; and state prisoners not yet assigned to diagnostic centers, in admission process, with delayed transport, and ready for pickup, with subtotals.

## Releases by clemency and maxout, Jan-2000 to Apr-2026

There are two main ways of being released from a Georgia prison -- by actions of the Board of Pardons and Paroles ("Clemencies") and by service of 100% of the court-ordered sentences ("Maxouts").

"Clemency" includes paroles, reprieves, commutations, and transfer to other confinement prior to expiration of sentence. "Other Releases" includes deaths, and sentences modified or overturned by the courts. Clemencies and maxouts may or may not be followed by periods of probation.



A. Clemency with probation to follow	RISES BY	54	from	449	to	503
B. Clemency only	falls by	10	from	80	to	70
C. Maxout with probation to follow	falls by	37	from	570	to	533
D. Maxout only (unsupervised)	RISES BY	2	from	53	to	55
E. Other releases	falls by	9	from	28	to	19
F. Total releases (A+B+C+D+E)	...	...	...	1180	at	1180
<b>G. Total clemencies (A+B) (top line)</b>	<b>RISES BY</b>	<b>44</b>	<b>from</b>	<b>529</b>	<b>to</b>	<b>573</b>
<b>H. Total maxouts (C+D) (bottom line)</b>	<b>falls by</b>	<b>35</b>	<b>from</b>	<b>623</b>	<b>to</b>	<b>588</b>
I. % of releases by clemency (G/F)	RISES BY	3.73%	from	44.83%	to	48.56%
J. % of releases by maxout (H/F)	falls by	2.97%	from	52.8%	to	49.83%
K. Supervised releases (A+B+C)	RISES BY	7	from	1099	to	1106
L. % unsupervised releases (D/F)	RISES BY	.17%	from	4.49%	to	4.66%
M. % supervised releases (K/F)	RISES BY	.59%	from	93.14%	to	93.73%

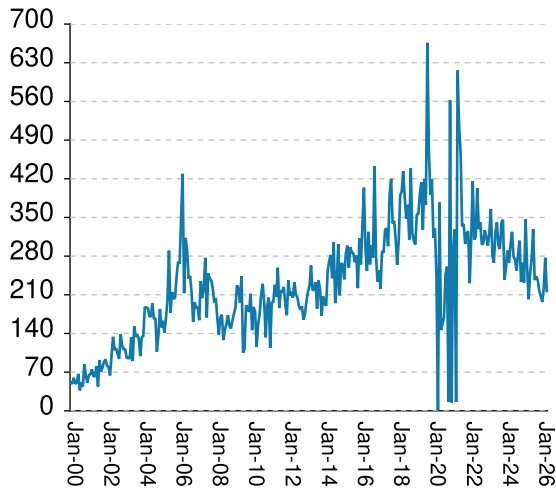
## Monthly releases from prison by type of release, for the past 48 months

	A	B	C	D	E	F	G	H	I	J
Month	Clemency + Prob	Clemency Only	Maxout + Prob	Maxout Only	Other rels	Total Releases (A+B+C+D+E)	Total Clemency (A+B)	Total Maxout (C+D)	Percent Clemency (G/F)	Percent Maxout (H/F)
May-22	439	79	539	64	26	1147	518	603	45.16%	52.57%
Jun-22	454	66	527	56	21	1124	520	583	46.26%	51.87%
Jul-22	439	71	529	60	14	1113	510	589	45.82%	52.92%
Aug-22	424	66	615	69	21	1195	490	684	41.00%	57.24%
Sep-22	397	78	548	60	18	1101	475	608	43.14%	55.22%
Oct-22	373	62	604	61	23	1123	435	665	38.74%	59.22%
Nov-22	367	53	521	57	19	1017	420	578	41.30%	56.83%
Dec-22	342	60	548	61	28	1039	402	609	38.69%	58.61%
Jan-23	375	51	525	60	23	1034	426	585	41.20%	56.58%
Feb-23	387	47	491	54	17	996	434	545	43.57%	54.72%
Mar-23	376	56	574	62	24	1092	432	636	39.56%	58.24%
Apr-23	392	55	573	53	26	1099	447	626	40.67%	56.96%
May-23	326	48	929	132	20	1455	374	1061	25.70%	72.92%
Jun-23	460	73	567	59	19	1178	533	626	45.25%	53.14%
Jul-23	459	74	509	50	25	1117	533	559	47.72%	50.04%
Aug-23	401	53	589	54	22	1119	454	643	40.57%	57.46%
Sep-23	402	56	576	44	10	1088	458	620	42.10%	56.99%
Oct-23	362	52	577	51	31	1073	414	628	38.58%	58.53%
Nov-23	353	58	490	68	19	988	411	558	41.60%	56.48%
Dec-23	366	46	554	57	21	1044	412	611	39.46%	58.52%
Jan-24	368	61	599	62	32	1122	429	661	38.24%	58.91%
Feb-24	396	51	577	60	24	1108	447	637	40.34%	57.49%
Mar-24	379	64	584	66	20	1113	443	650	39.80%	58.40%
Apr-24	409	48	531	53	33	1074	457	584	42.55%	54.38%
May-24	426	56	605	77	26	1190	482	682	40.50%	57.31%
Jun-24	412	61	575	61	23	1132	473	636	41.78%	56.18%
Jul-24	398	62	628	67	38	1193	460	695	38.56%	58.26%
Aug-24	381	67	640	58	19	1165	448	698	38.45%	59.91%
Sep-24	379	65	561	64	34	1103	444	625	40.25%	56.66%
Oct-24	399	59	632	54	28	1172	458	686	39.08%	58.53%
Nov-24	388	54	591	55	23	1111	442	646	39.78%	58.15%
Dec-24	392	57	555	49	33	1086	449	604	41.34%	55.62%
Jan-25	416	61	560	49	30	1116	477	609	42.74%	54.57%
Feb-25	400	56	546	60	17	1079	456	606	42.26%	56.16%
Mar-25	432	55	593	53	23	1156	487	646	42.13%	55.88%
Apr-25	409	62	555	45	18	1089	471	600	43.25%	55.10%
May-25	424	45	550	55	26	1100	469	605	42.64%	55.00%
Jun-25	433	61	580	35	36	1145	494	615	43.14%	53.71%
Jul-25	491	60	620	62	33	1266	551	682	43.52%	53.87%
Aug-25	431	72	602	58	16	1179	503	660	42.66%	55.98%
Sep-25	405	58	576	41	26	1106	463	617	41.86%	55.79%
Oct-25	518	87	592	51	26	1274	605	643	47.49%	50.47%
Nov-25	407	52	582	40	22	1103	459	622	41.61%	56.39%
Dec-25	443	59	520	58	28	1108	502	578	45.31%	52.17%
Jan-26	426	72	572	52	35	1157	498	624	43.04%	53.93%
Feb-26	427	63	519	57	27	1093	490	576	44.83%	52.70%
Mar-26	449	80	570	53	28	1180	529	623	44.83%	52.80%
Apr-26	503	70	533	55	19	1180	573	588	48.56%	49.83%

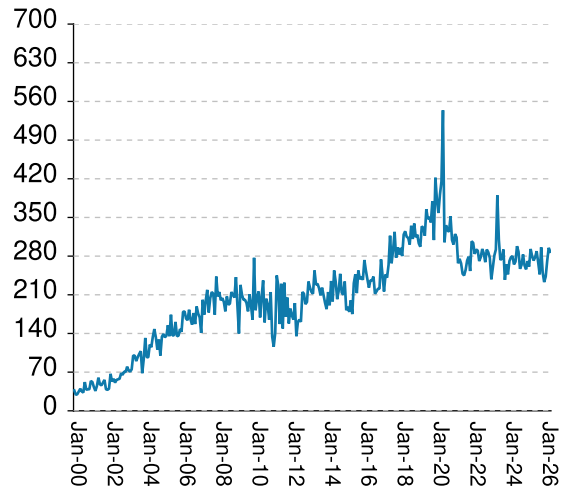
# Inmates with meth crimes, by month, Jan-2000 to Apr-2026

Methamphetamine is one of the most addictive drugs ever known. At first it induces intense euphoria, but with continued use causes severe depression and physical deterioration, including the dental catastrophe known as "meth mouth". Georgia's meth epidemic began in the early 2000s and has seen continued growth over the last 2 decades, with continued expansion beyond the originally predominate use by northern county white males.

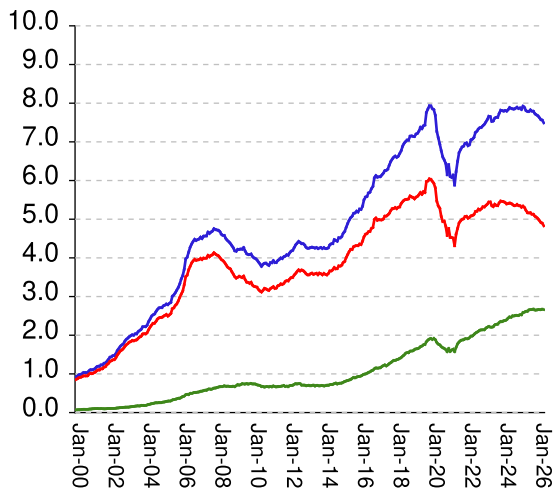
### Admissions



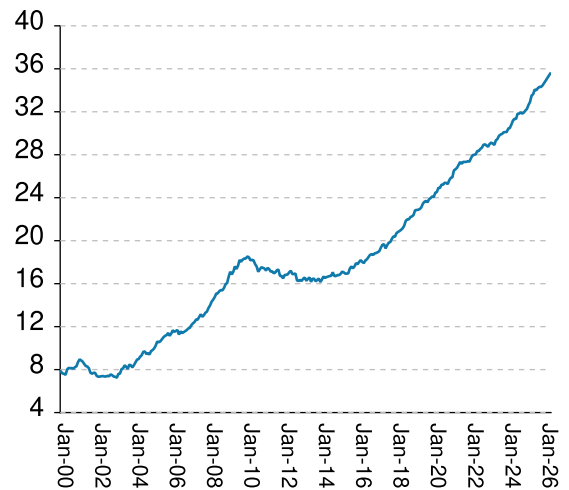
### Releases



### Population x1000



### Percent Non-White

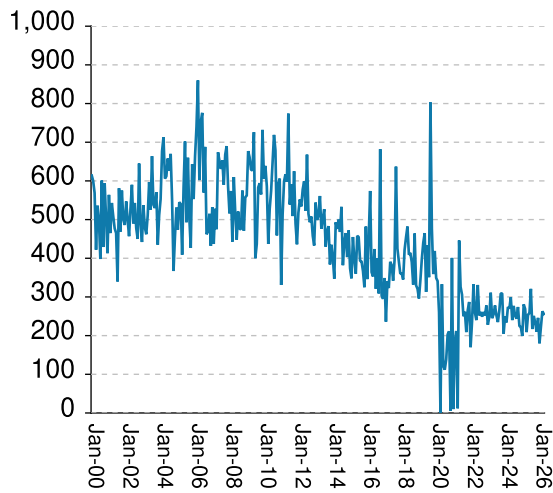


Methamphetamine admissions	falls by	60	from	277	to	217
Methamphetamine releases	falls by	7	from	295	to	288
<b>Methamphetamine population</b>	<b>falls by</b>	<b>71</b>	<b>from</b>	<b>7560</b>	<b>to</b>	<b>7489</b>
<b>Meth white population</b>	<b>falls by</b>	<b>68</b>	<b>from</b>	<b>4895</b>	<b>to</b>	<b>4827</b>
<b>Meth non-white population</b>	<b>falls by</b>	<b>10</b>	<b>from</b>	<b>2672</b>	<b>to</b>	<b>2662</b>
Percent meth inmates who are non-white	RISES BY	.21%	from	35.34%	to	35.55%

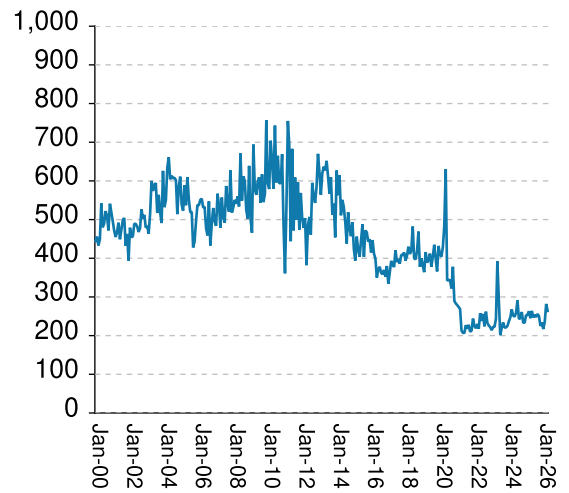
# Non-violent first-incarcerants, by month, Jan-2000 to Apr-2026

Historically, about one in six Georgia prison inmates has been a first-time incarcerant with a non-violent crime. In 2012 Georgia passed HB1176, which aimed to curb the growth of prison population by steering the least dangerous, least hardened offenders away from prison through pre-trial intervention, diversion, drug courts and treatment programs, and raising the dollar thresholds that define property felonies. The expectation is that over time, these measures will reduce the percentage of first-time non-violent incarcerants in prison.

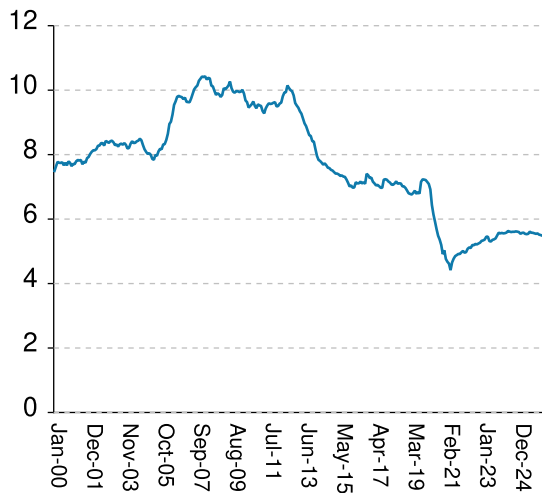
### Admissions



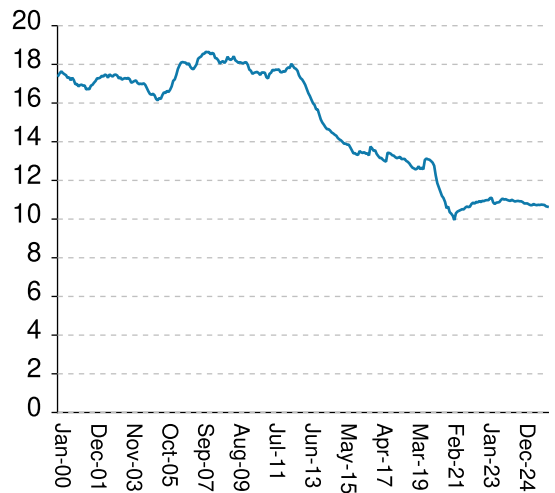
### Releases



### Population x1000



### % Total Population

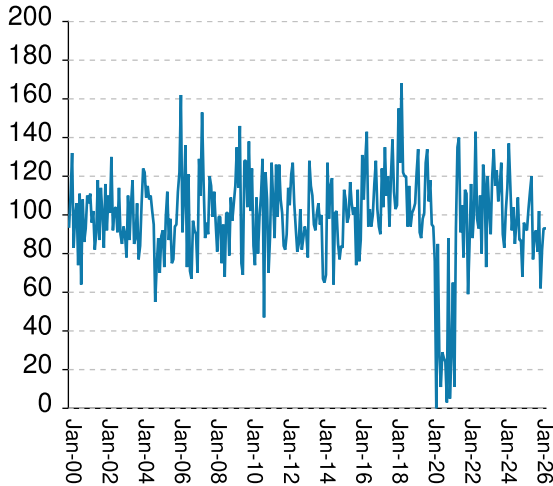


Non-viol/1st-Incar admissions	falls by	7	from	263	to	256
Non-viol/1st-Incar releases	falls by	18	from	282	to	264
Non-viol/1st-Incar population	falls by	8	from	5486	to	5478
Non-viol/1st-Incar % of total population	falls by	.02%	from	10.66%	to	10.64%

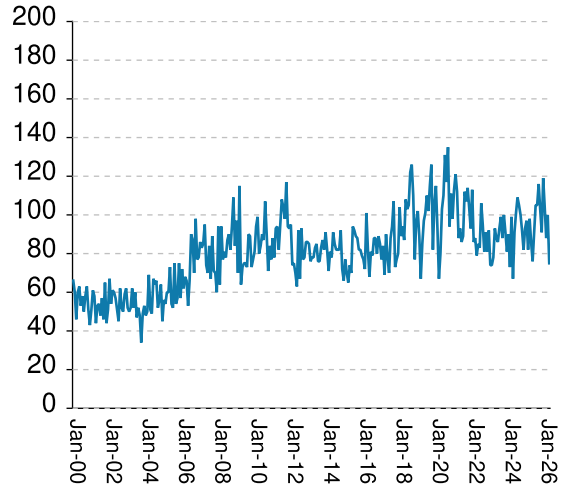
## 'Seven Deadly Sin', by month, Jan-2000 to Apr-2026

Tough legislation in 1995 imposed mandatory ten-year minimum terms for kidnapping, armed robbery, rape, aggravated sodomy, aggravated sexual battery, and aggravated child molestation, and a minimum of 25 years for murder. A second conviction resulted in life without parole. As predicted, longer prison terms caused population to climb steeply for about a decade. It then began to level off, as releases started catching up with admissions. The 2008 dip in percentage of total population (bottom right) was caused by the surge of methamphetamine convictions (Page MO-03). Note: these graphs include inmates convicted before 1995.

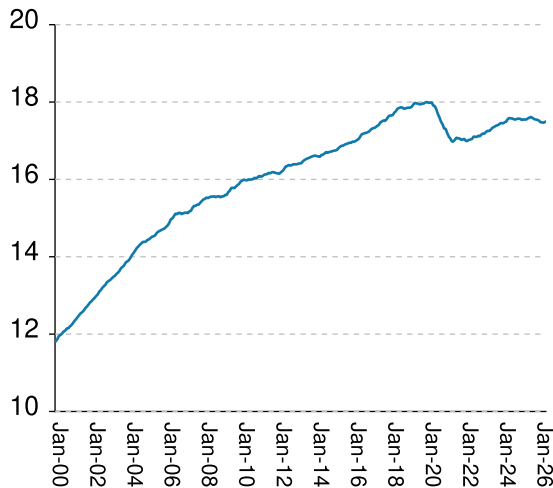
### Admissions



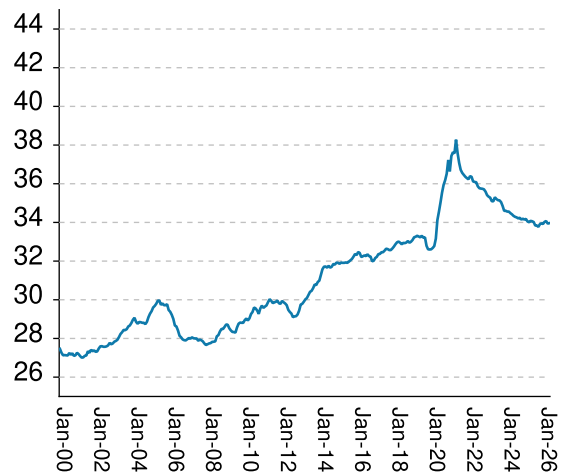
### Releases



### Population x1000



### % Total Population



"Seven Deadly Sin" admissions	...	...	...	93	at	93
"Seven Deadly Sin" releases	falls by	25	from	100	to	75
"Seven Deadly Sin" population	RISES BY	18	from	17467	to	17485
"Seven Deadly Sin" % of total population	RISES BY	.02%	from	33.94%	to	33.96%

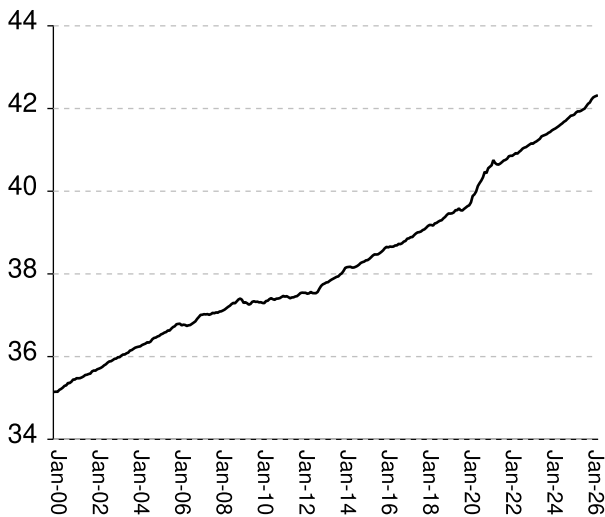
## Inmate subpopulation counts and percentages, for the past 48 months

Month	Methamphetamine						1st Incar Non-Violent		Seven Deadly Sins	
	Total Number	Total Percent	White Number	White Percent	Non White Number	Non White Percent	Number	Percent	Number	Percent
May-22	7116	15.06%	5123	71.99%	2017	28.34%	5102	10.80%	17048	36.08%
Jun-22	7241	15.18%	5197	71.77%	2053	28.35%	5195	10.89%	17108	35.87%
Jul-22	7277	15.22%	5207	71.55%	2077	28.54%	5191	10.86%	17100	35.77%
Aug-22	7333	15.33%	5260	71.73%	2102	28.66%	5228	10.93%	17098	35.75%
Sep-22	7365	15.37%	5241	71.16%	2130	28.92%	5215	10.88%	17127	35.74%
Oct-22	7376	15.39%	5270	71.45%	2137	28.97%	5243	10.94%	17116	35.71%
Nov-22	7416	15.38%	5319	71.72%	2140	28.86%	5269	10.93%	17161	35.59%
Dec-22	7453	15.36%	5317	71.34%	2142	28.74%	5325	10.97%	17185	35.41%
Jan-23	7514	15.45%	5354	71.25%	2180	29.01%	5339	10.98%	17184	35.33%
Feb-23	7577	15.51%	5390	71.14%	2207	29.13%	5365	10.98%	17230	35.28%
Mar-23	7661	15.58%	5442	71.04%	2225	29.04%	5453	11.09%	17254	35.10%
Apr-23	7651	15.56%	5445	71.17%	2212	28.91%	5455	11.10%	17251	35.09%
May-23	7529	15.38%	5351	71.07%	2209	29.34%	5318	10.86%	17283	35.30%
Jun-23	7542	15.32%	5326	70.62%	2222	29.46%	5305	10.78%	17331	35.21%
Jul-23	7610	15.41%	5386	70.78%	2265	29.76%	5356	10.85%	17353	35.15%
Aug-23	7633	15.43%	5357	70.18%	2281	29.88%	5371	10.86%	17377	35.14%
Sep-23	7634	15.38%	5352	70.11%	2286	29.94%	5401	10.88%	17396	35.05%
Oct-23	7737	15.49%	5423	70.09%	2328	30.09%	5489	10.99%	17411	34.85%
Nov-23	7818	15.51%	5468	69.94%	2354	30.11%	5577	11.06%	17447	34.60%
Dec-23	7808	15.48%	5460	69.93%	2352	30.12%	5557	11.01%	17456	34.60%
Jan-24	7796	15.44%	5450	69.91%	2373	30.44%	5570	11.03%	17449	34.56%
Feb-24	7808	15.44%	5430	69.54%	2381	30.49%	5557	10.99%	17478	34.56%
Mar-24	7796	15.37%	5397	69.23%	2402	30.81%	5563	10.96%	17493	34.48%
Apr-24	7832	15.35%	5405	69.01%	2442	31.18%	5581	10.94%	17563	34.42%
May-24	7886	15.40%	5417	68.69%	2472	31.35%	5631	11.00%	17587	34.34%
Jun-24	7867	15.35%	5405	68.70%	2465	31.33%	5612	10.95%	17578	34.29%
Jul-24	7853	15.31%	5380	68.51%	2499	31.82%	5598	10.91%	17573	34.26%
Aug-24	7850	15.30%	5353	68.19%	2499	31.83%	5606	10.93%	17553	34.21%
Sep-24	7869	15.35%	5357	68.08%	2513	31.94%	5605	10.94%	17549	34.24%
Oct-24	7894	15.35%	5381	68.17%	2513	31.83%	5618	10.92%	17566	34.15%
Nov-24	7864	15.30%	5353	68.07%	2511	31.93%	5610	10.92%	17571	34.19%
Dec-24	7876	15.31%	5347	67.89%	2529	32.11%	5598	10.88%	17565	34.15%
Jan-25	7837	15.28%	5308	67.73%	2529	32.27%	5544	10.81%	17536	34.18%
Feb-25	7923	15.37%	5338	67.37%	2585	32.63%	5572	10.81%	17550	34.05%
Mar-25	7889	15.29%	5303	67.22%	2597	32.92%	5578	10.81%	17545	34.01%
Apr-25	7811	15.17%	5229	66.94%	2617	33.50%	5542	10.76%	17551	34.08%
May-25	7789	15.09%	5169	66.36%	2620	33.64%	5532	10.72%	17578	34.06%
Jun-25	7787	15.05%	5163	66.30%	2653	34.07%	5543	10.72%	17599	34.02%
Jul-25	7827	15.04%	5166	66.00%	2661	34.00%	5610	10.78%	17614	33.84%
Aug-25	7795	15.00%	5130	65.81%	2665	34.19%	5579	10.74%	17586	33.84%
Sep-25	7791	14.98%	5127	65.81%	2674	34.32%	5574	10.72%	17560	33.77%
Oct-25	7732	14.94%	5079	65.69%	2653	34.31%	5558	10.74%	17549	33.91%
Nov-25	7700	14.91%	5051	65.60%	2652	34.44%	5543	10.73%	17539	33.95%
Dec-25	7675	14.86%	5016	65.36%	2660	34.66%	5555	10.75%	17522	33.92%
Jan-26	7629	14.85%	4968	65.12%	2661	34.88%	5518	10.74%	17480	34.03%
Feb-26	7578	14.77%	4917	64.89%	2661	35.11%	5505	10.73%	17474	34.07%
Mar-26	7560	14.69%	4895	64.75%	2672	35.34%	5486	10.66%	17467	33.94%
Apr-26	7489	14.54%	4827	64.45%	2662	35.55%	5478	10.64%	17485	33.96%

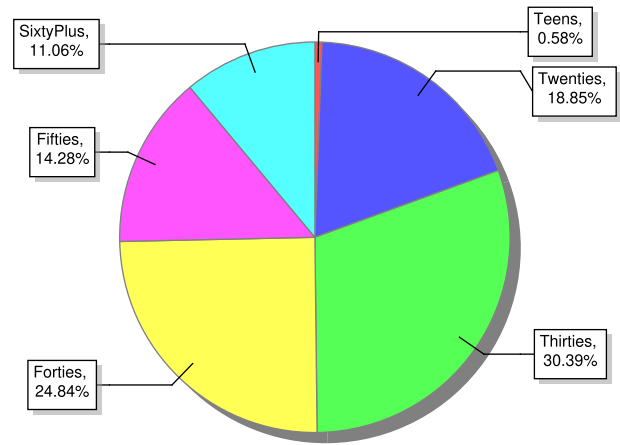
# Overview of inmate age statistics, Jan-2000 to Apr-2026

The "aging inmate population" is a concern in correctional systems throughout America, including Georgia. Here, the increase in inmate age is the result of several factors. Teenagers have been steered away from prison by increased usage of probation and other alternatives, at least for their first convictions. And there has been a surge of middle-aged male sex offenders due to the expanding "It's OK to tell" ethos. But most importantly, more severe sentence lengths and release policies have greatly increased the length of time that most offenders -- especially violent ones -- spend in prison, thereby increasing their average age.

### Average age since 2000



### Current Age



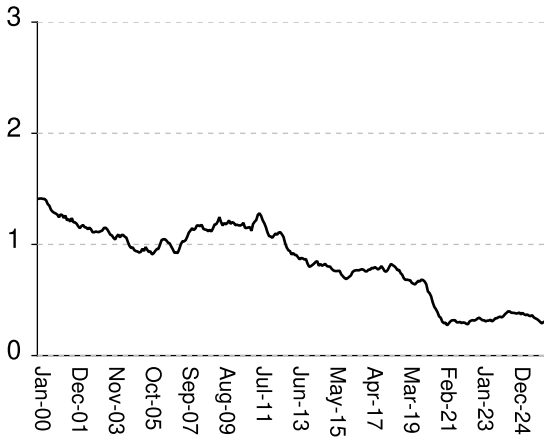
Apr-2026

Average age of active inmates	RISES BY	.02	from	42.29	to	42.31
Number in their teens	RISES BY	10	from	290	to	300
Percentage in their teens	RISES BY	.02%	from	.56%	to	.58%
Number in their twenties	RISES BY	20	from	9,685	to	9,705
Percentage in their twenties	RISES BY	.03%	from	18.82%	to	18.85%
Number in their thirties	falls by	56	from	15,705	to	15,649
Percentage in their thirties	falls by	.13%	from	30.52%	to	30.39%
Number in their forties	RISES BY	13	from	12,776	to	12,789
Percentage in their forties	RISES BY	.02%	from	24.82%	to	24.84%
Number in their fifties	RISES BY	20	from	7,334	to	7,354
Percentage in their fifties	RISES BY	.03%	from	14.25%	to	14.28%
Number age sixty and up	falls by	2	from	5,696	to	5,694
Percentage age sixty and up	falls by	.01%	from	11.07%	to	11.06%

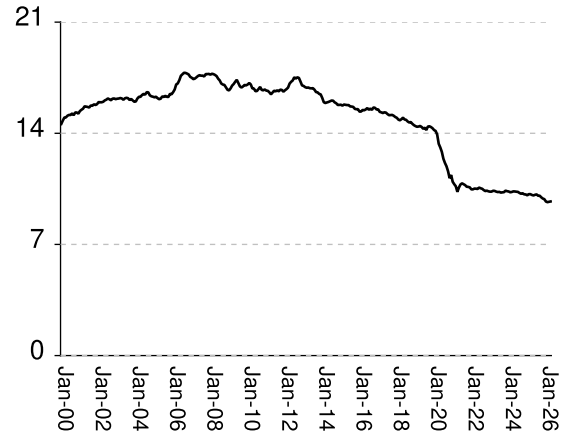
# Monthly counts of inmates by age group, Jan-2000 to Apr-2026

Y-axis of Twenties/Thirties/Forties/Fifties runs from 0 to 21,000. Y-axis of Teens/Sixty+ runs from 0 to 3,000.

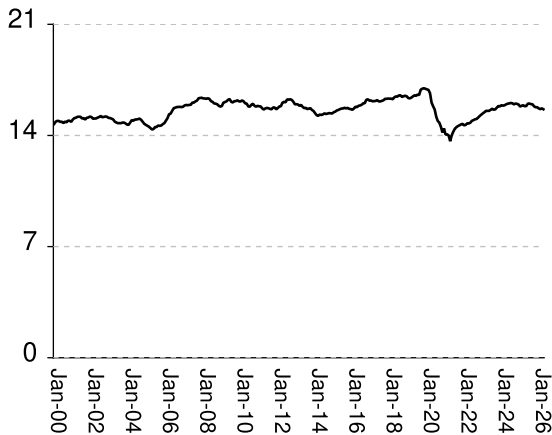
### Teens x 1000



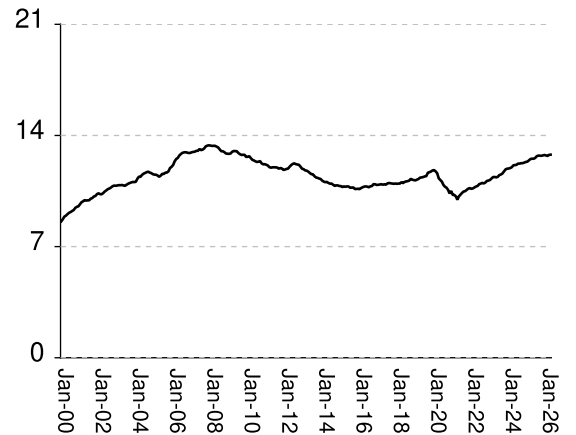
### Twenties x 1000



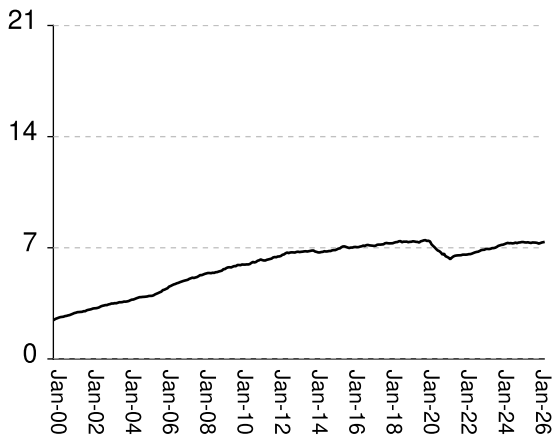
### Thirties x 1000



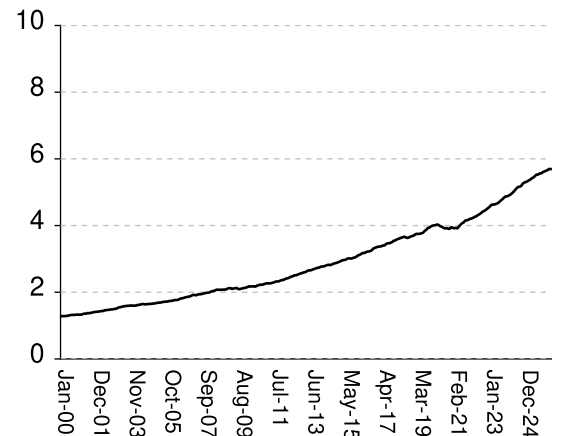
### Forties x 1000



### Fifties x 1000



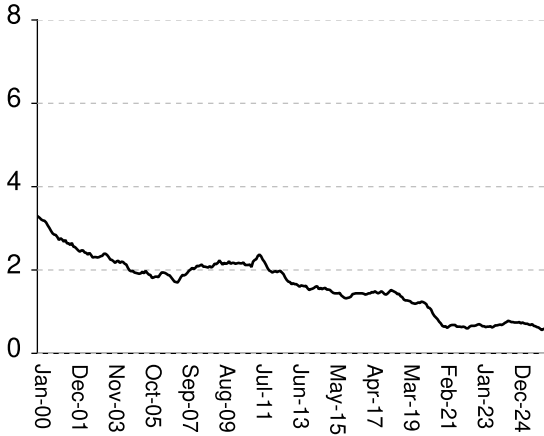
### Sixty & Up x 1000



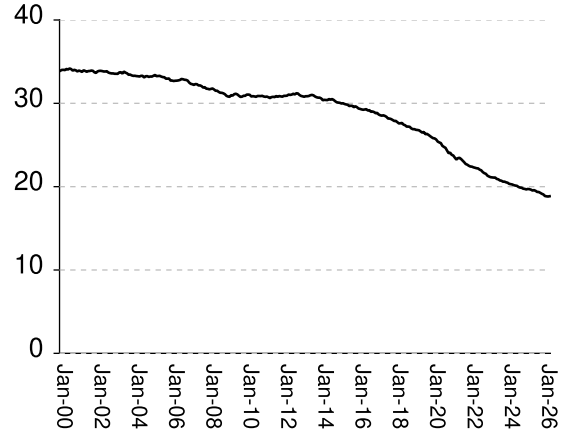
# Monthly percentages of inmates by age group, Jan-2000 to Apr-2026

Y-axis of Twenties/Thirties/Forties/Fifties runs from 0% to 40%. Y-axis of Teens/Sixty+ runs from 0% to 8%

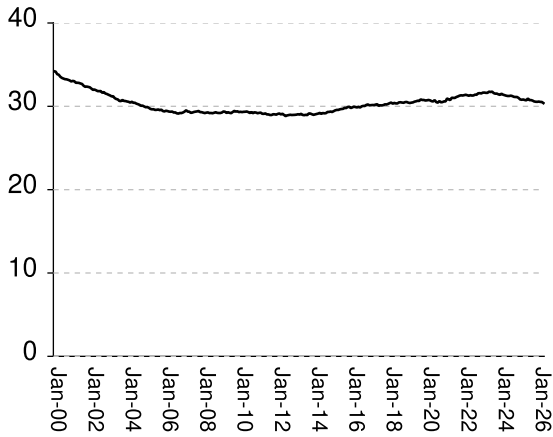
### Teens (%)



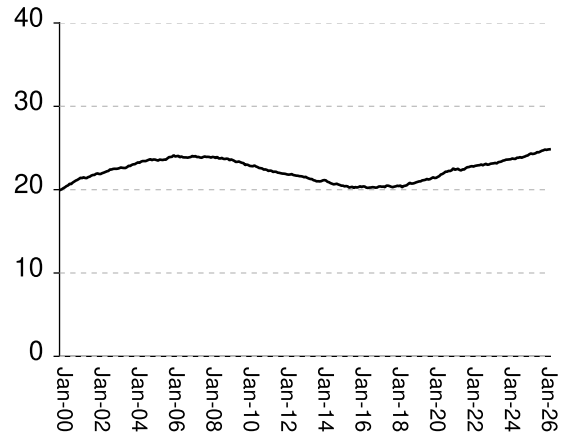
### Twenties (%)



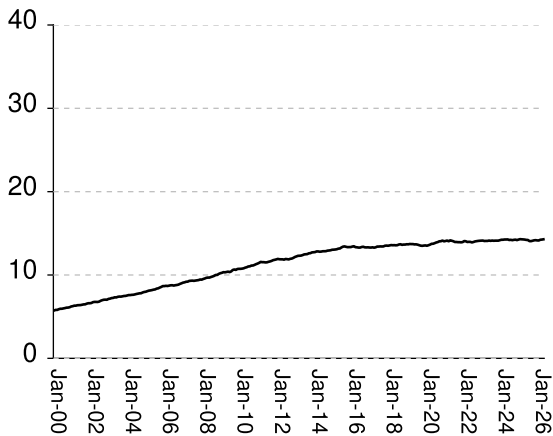
### Thirties (%)



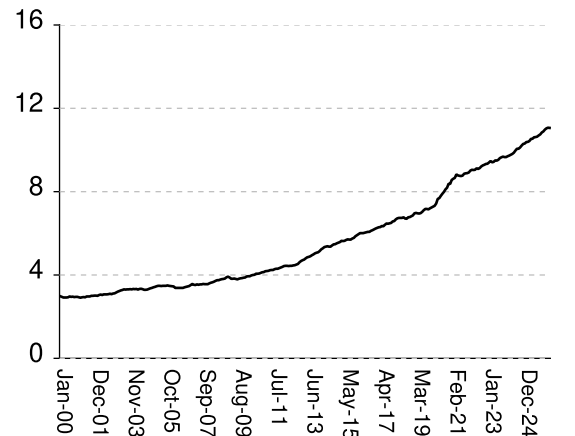
### Forties (%)



### Fifties (%)



### Sixty & Up (%)

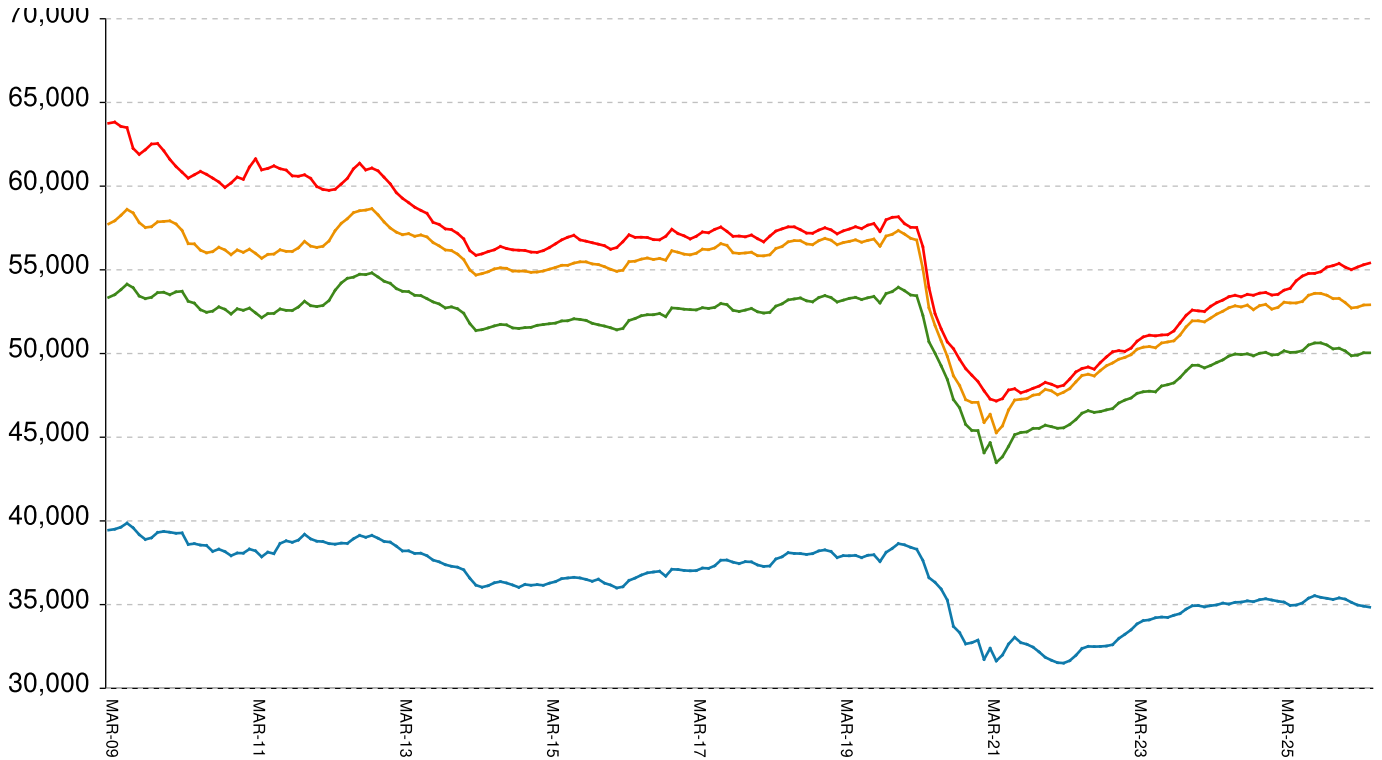


## Inmate counts & percentages by age, for past 48 months

Month	Avg Age	Teens		Twenties		Thirties		Forties		Fifties		Sixty & Up	
		Number	Percent	Number	Percent	Number	Percent	Number	Percent	Number	Percent	Number	Percent
May-22	40.92	282	0.60%	10494	22.21%	14807	31.34%	10817	22.89%	6601	13.97%	4308	9.12%
Jun-22	40.91	307	0.64%	10580	22.19%	14923	31.29%	10928	22.92%	6633	13.91%	4335	9.09%
Jul-22	40.95	315	0.66%	10535	22.04%	14967	31.31%	10969	22.94%	6675	13.96%	4363	9.13%
Aug-22	40.98	318	0.66%	10503	21.96%	15018	31.40%	11010	23.02%	6711	14.03%	4404	9.21%
Sep-22	41.03	315	0.66%	10421	21.75%	15040	31.39%	10981	22.92%	6739	14.06%	4436	9.26%
Oct-22	41.05	322	0.67%	10363	21.62%	15126	31.56%	11035	23.02%	6754	14.09%	4454	9.29%
Nov-22	41.07	334	0.69%	10386	21.54%	15227	31.58%	11137	23.10%	6801	14.11%	4499	9.33%
Dec-22	41.1	341	0.70%	10346	21.32%	15311	31.55%	11159	22.99%	6853	14.12%	4532	9.34%
Jan-23	41.13	329	0.68%	10324	21.22%	15391	31.64%	11198	23.02%	6872	14.13%	4575	9.40%
Feb-23	41.16	318	0.65%	10326	21.14%	15459	31.65%	11290	23.11%	6876	14.08%	4626	9.47%
Mar-23	41.15	318	0.65%	10379	21.11%	15547	31.62%	11378	23.14%	6926	14.09%	4626	9.41%
Apr-23	41.18	308	0.63%	10371	21.09%	15548	31.62%	11386	23.16%	6929	14.09%	4634	9.43%
May-23	41.2	314	0.64%	10326	21.09%	15548	31.76%	11361	23.21%	6920	14.13%	4650	9.50%
Jun-23	41.24	315	0.64%	10299	20.93%	15612	31.72%	11392	23.15%	6939	14.10%	4672	9.49%
Jul-23	41.27	322	0.65%	10308	20.88%	15683	31.76%	11504	23.30%	6979	14.13%	4707	9.53%
Aug-23	41.33	308	0.62%	10264	20.75%	15623	31.59%	11539	23.33%	6980	14.11%	4753	9.61%
Sep-23	41.34	318	0.64%	10280	20.71%	15640	31.52%	11603	23.38%	7005	14.12%	4789	9.65%
Oct-23	41.36	335	0.67%	10292	20.60%	15752	31.53%	11730	23.48%	7055	14.12%	4837	9.68%
Nov-23	41.38	336	0.67%	10386	20.60%	15853	31.44%	11860	23.52%	7121	14.12%	4873	9.66%
Dec-23	41.41	345	0.68%	10352	20.52%	15832	31.38%	11906	23.60%	7152	14.18%	4876	9.66%
Jan-24	41.43	350	0.69%	10336	20.47%	15907	31.51%	11918	23.61%	7183	14.23%	4897	9.70%
Feb-24	41.47	344	0.68%	10287	20.34%	15878	31.40%	11948	23.63%	7195	14.23%	4922	9.73%
Mar-24	41.5	353	0.70%	10301	20.30%	15900	31.34%	11997	23.65%	7233	14.26%	4959	9.77%
Apr-24	41.52	371	0.73%	10340	20.26%	15960	31.28%	12114	23.74%	7275	14.26%	5005	9.81%
May-24	41.55	384	0.75%	10335	20.18%	16001	31.24%	12136	23.70%	7307	14.27%	5056	9.87%
Jun-24	41.58	398	0.78%	10320	20.13%	16017	31.24%	12144	23.69%	7282	14.20%	5111	9.97%
Jul-24	41.61	397	0.77%	10308	20.10%	16045	31.28%	12223	23.83%	7294	14.22%	5158	10.06%
Aug-24	41.64	385	0.75%	10239	19.96%	16025	31.23%	12228	23.83%	7276	14.18%	5162	10.06%
Sep-24	41.68	385	0.75%	10193	19.89%	15959	31.14%	12251	23.90%	7287	14.22%	5185	10.12%
Oct-24	41.7	383	0.74%	10222	19.87%	16007	31.12%	12256	23.83%	7324	14.24%	5252	10.21%
Nov-24	41.75	379	0.74%	10156	19.76%	15993	31.12%	12288	23.91%	7291	14.19%	5288	10.29%
Dec-24	41.78	380	0.74%	10147	19.73%	15951	31.01%	12332	23.97%	7328	14.25%	5305	10.31%
Jan-25	41.83	387	0.75%	10094	19.67%	15817	30.83%	12346	24.06%	7338	14.30%	5325	10.38%
Feb-25	41.83	371	0.72%	10165	19.72%	15871	30.79%	12426	24.11%	7360	14.28%	5354	10.39%
Mar-25	41.85	384	0.74%	10166	19.70%	15900	30.82%	12511	24.25%	7362	14.27%	5380	10.43%
Apr-25	41.9	371	0.72%	10115	19.64%	15842	30.76%	12537	24.34%	7340	14.25%	5421	10.53%
May-25	41.93	364	0.71%	10087	19.54%	15855	30.72%	12532	24.28%	7334	14.21%	5442	10.54%
Jun-25	41.93	369	0.71%	10126	19.58%	16006	30.94%	12574	24.31%	7346	14.20%	5488	10.61%
Jul-25	41.95	359	0.69%	10150	19.50%	16006	30.75%	12682	24.37%	7321	14.07%	5529	10.62%
Aug-25	41.97	355	0.68%	10067	19.37%	15977	30.75%	12729	24.50%	7304	14.06%	5529	10.64%
Sep-25	42	363	0.70%	10069	19.36%	15960	30.69%	12729	24.48%	7335	14.11%	5562	10.70%
Oct-25	42.06	344	0.66%	9968	19.26%	15832	30.59%	12718	24.57%	7330	14.16%	5565	10.75%
Nov-25	42.11	335	0.65%	9890	19.15%	15778	30.55%	12741	24.67%	7324	14.18%	5600	10.84%
Dec-25	42.14	328	0.63%	9850	19.07%	15777	30.54%	12768	24.72%	7307	14.15%	5624	10.89%
Jan-26	42.22	317	0.62%	9701	18.88%	15702	30.57%	12744	24.81%	7265	14.14%	5640	10.98%
Feb-26	42.27	303	0.59%	9661	18.84%	15660	30.53%	12706	24.77%	7297	14.23%	5663	11.04%
Mar-26	42.29	290	0.56%	9685	18.82%	15705	30.52%	12776	24.82%	7334	14.25%	5696	11.07%
Apr-26	42.31	300	0.58%	9705	18.85%	15649	30.39%	12789	24.84%	7354	14.28%	5694	11.06%

# All housed offenders under GDC jurisdiction

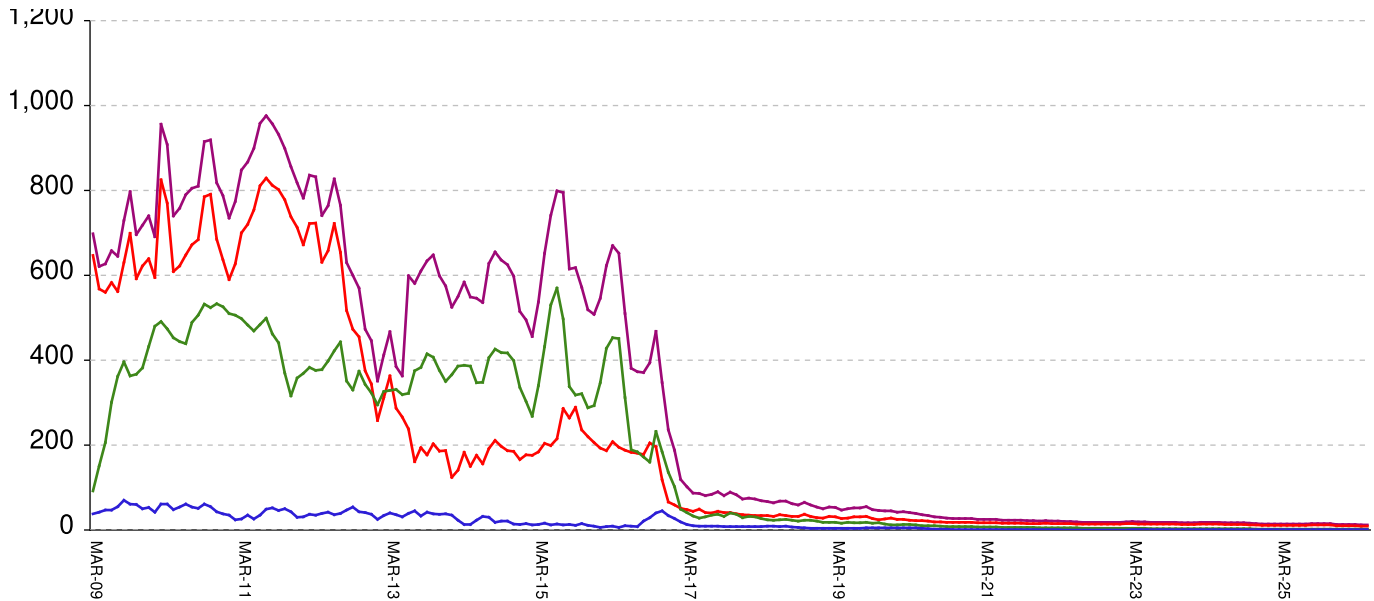
March 20, 2009 through May 01, 2026



<b>All in bed + probs in jail + backlog</b>	<b>RISES BY</b>	<b>149</b>	<b>from</b>	<b>55,256</b>	<b>to</b>	<b>55,405</b>
Probationers in jail	...	...	...	12	at	12
Inmate jail backlog	RISES BY	41	from	2,440	to	2,481
<b>All in beds: inmate + Prob + parole</b>	<b>RISES BY</b>	<b>108</b>	<b>from</b>	<b>52,804</b>	<b>to</b>	<b>52,912</b>
Total probationers in beds	RISES BY	28	from	2,841	to	2,869
Probation detention centers	RISES BY	24	from	1,363	to	1,387
Probation boot camps	falls by	...	from		to	
Probation RSAT	RISES BY	4	from	1,478	to	1,482
Parole revocation centers	falls by	...	from		to	
<b>All in inmate beds: state + other</b>	<b>RISES BY</b>	<b>80</b>	<b>from</b>	<b>49,963</b>	<b>to</b>	<b>50,043</b>
Other inmate facilities:	RISES BY	56	from	15,142	to	15,198
Inmate boot camps	...	...	...	0	at	0
Private prisons	RISES BY	15	from	8,094	to	8,109
County prisons	RISES BY	22	from	4,275	to	4,297
Transitional centers	RISES BY	19	from	2,773	to	2,792
<b>In state prisons only</b>	<b>RISES BY</b>	<b>24</b>	<b>from</b>	<b>34,821</b>	<b>to</b>	<b>34,845</b>

# Probationers in jail awaiting placement in facilities

March 20, 2009 through May 01, 2026



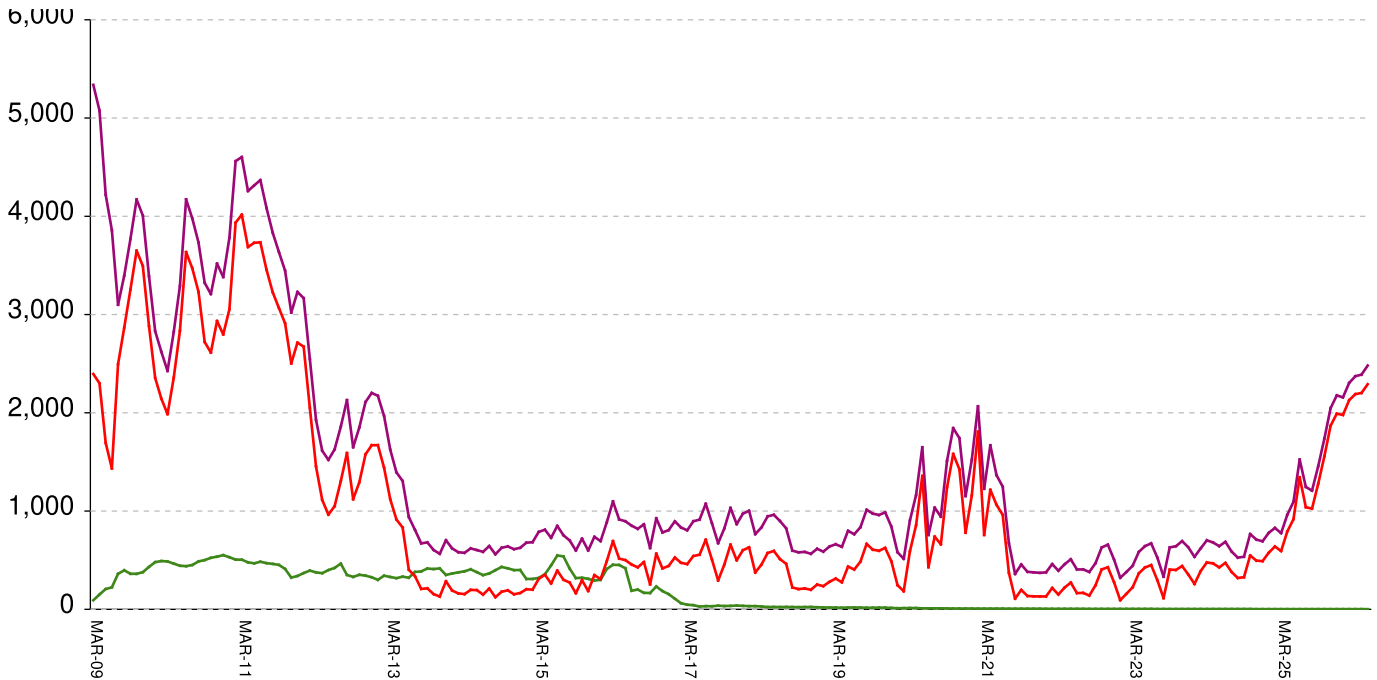
This graph shows, for each Friday since March 20 2009, the number of sentenced felony probationers who were waiting in jail for placement in facilities that GDC operates for housing probationers -- detention centers, probation residential substance abuse treatment (RSAT) centers, and probation boot camps. Counts include both those offenders sentenced directly from court, and those whose street probation was revoked.

<b>Total probationers waiting in jail</b>	...	...	...	<b>level</b>	<b>at</b>	<b>12</b>
<b>...waiting for detention centers</b>	...	...	...	<b>level</b>	<b>at</b>	<b>9</b>
<b>...waiting for probation RSAT</b>	...	...	...	<b>level</b>	<b>at</b>	<b>2</b>
<b>...waiting for probation boot camps</b>	...	...	...	<b>level</b>	<b>at</b>	<b>1</b>

The highest number of probationers waiting in jail was 994 on 05-MAR-10  
 ...highest number waiting for detention centers was 859 on 05-MAR-10  
 ...highest number waiting for probation RSAT was 592 on 10-JUL-15  
 ...highest number waiting for probation boot camps was 70 on 18-SEP-09

# State inmates in jail awaiting placement in facilities

March 20, 2009 through May 01, 2026



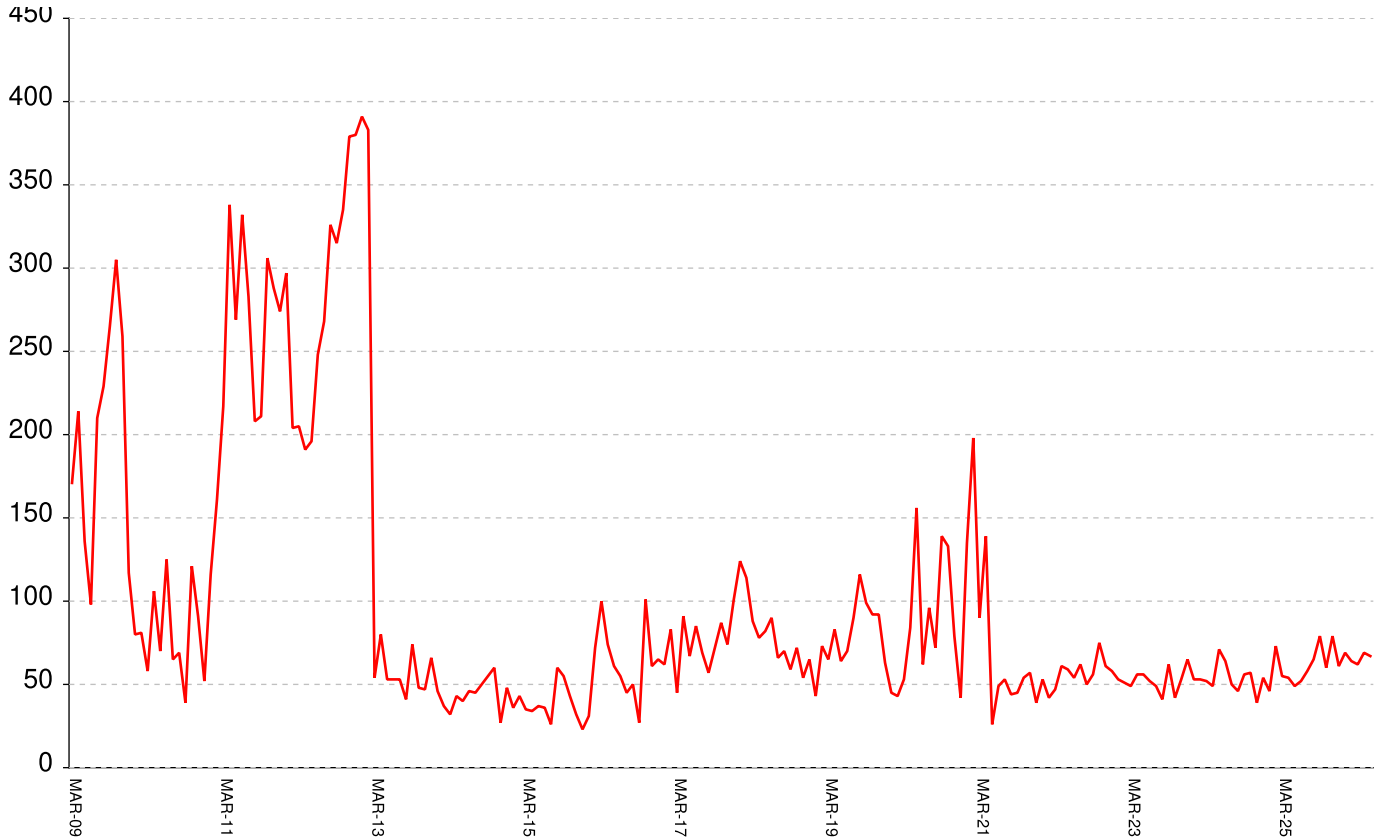
This graph shows, for each Friday since March 2009, the number of prisoners, probationers, and parolees in local jails who have been sentenced or revoked to state prison and whose documents have been received and verified by GDC. Most are almost immediately assigned to a diagnostic center, and are designated as in "admission processing". Of those a few hundred may be in the "transportation delayed" category because there is no room in the assigned diagnostic center, or because the inmate is being held for medical reasons, or for other court proceedings, or other reasons. Those remaining are "ready to be picked up".

<b>Total state inmates waiting in jail</b>	<b>RISES BY</b>	<b>41</b>	<b>from</b>	<b>2440</b>	<b>to</b>	<b>2481</b>
... not yet assigned to a diagnostic center	falls by	1	from	13	to	12
... total "in admission processing"	RISES BY	42	from	2427	to	2469
... with "transportation delayed"	...	...	...	level	at	178
... ready to be picked up	RISES BY	42	from	2249	to	2291

The highest number of state inmates waiting in jail was 5338 on 27-MAR-09  
 ... highest number not asg to a diagnostic center was 2881 on 12-JUN-09  
 ... highest number in admission processing was 4916 on 25-MAR-11  
 ... highest number with transportation delayed was 645 on 14-JAN-11  
 ... highest number ready to be pickup was 4435 on 25-MAR-11

# Female state inmates in jail awaiting pickup

March 20, 2009 through May 01, 2026



This graph shows, for each Friday since March 2009, the number of female state prisoners in local jails who were assigned to diagnostic centers but had not yet been picked up.

**Female state inmates in jails waiting picked up RISES BY 12 from 55 to 67**

The highest number of female inmates waiting in jail was 424 on 01-FEB-13

The lowest number of female inmates waiting in jail was 17 on 20-MAR-20

## Summary of housed prisoners, parolees, and probationers

Week Ending	Prison	Parole	Probation			Prison+parole +probation	Jail		Total
	Total inmates	Revocation centers	Prob RSAT	Boot camp	Detention		Inmate backlog	Probationers	Prison+parole +probation+jail
09-May-2025	49969		1446		1504	52919	1192	14	54125
16-May-2025	50043		1435		1473	52951	1355	14	54320
23-May-2025	50107		1428		1501	53036	1453	14	54503
30-May-2025	50224		1437		1509	53170	1477	14	54661
06-Jun-2025	50133		1455		1482	53070	1520	14	54604
13-Jun-2025	50139		1440		1487	53066	1524	14	54604
20-Jun-2025	50045		1425		1525	52995	1543	14	54552
27-Jun-2025	50363		1438		1512	53313	1425	14	54752
04-Jul-2025	50404		1450		1516	53370	1394	14	54778
11-Jul-2025	50529		1433		1531	53493	1191	14	54698
18-Jul-2025	50525		1462		1492	53479	1246	14	54739
25-Jul-2025	50570		1485		1514	53569	1318	14	54901
01-Aug-2025	50604		1492		1499	53595	1266	14	54875
08-Aug-2025	50586		1483		1482	53551	1112	14	54677
15-Aug-2025	50624		1487		1483	53594	1113	14	54721
22-Aug-2025	50654		1478		1463	53595	1204	15	54814
29-Aug-2025	50683		1491		1461	53635	1208	15	54858
05-Sep-2025	50623		1491		1458	53572	1164	15	54751
12-Sep-2025	50671		1504		1474	53649	1168	15	54832
19-Sep-2025	50604		1479		1477	53560	1350	15	54925
26-Sep-2025	50642		1490		1446	53578	1456	15	55049
03-Oct-2025	50592		1496		1426	53514	1545	15	55074
10-Oct-2025	50542		1502		1438	53482	1568	15	55065
17-Oct-2025	50565		1526		1461	53552	1619	15	55186
24-Oct-2025	50468		1540		1470	53478	1738	15	55231
31-Oct-2025	50381		1483		1513	53377	1861	15	55253
07-Nov-2025	50231		1503		1493	53227	1898	15	55140
14-Nov-2025	50276		1516		1485	53277	1907	15	55199
21-Nov-2025	50343		1512		1498	53353	1956	15	55324
28-Nov-2025	50271		1495		1515	53281	2047	15	55343
05-Dec-2025	50325		1472		1501	53298	1989	14	55301
12-Dec-2025	50317		1481		1499	53297	2063	13	55373
19-Dec-2025	50326		1503		1474	53303	2078	13	55394
26-Dec-2025	50291		1493		1474	53258	2177	13	55448
02-Jan-2026	50238		1475		1427	53140	2171	13	55324
09-Jan-2026	50250		1479		1429	53158	1965	13	55136
16-Jan-2026	50195		1483		1436	53114	2042	13	55169
23-Jan-2026	50092		1469		1430	52991	2157	13	55161
30-Jan-2026	49980		1465		1364	52809	2182	13	55004
06-Feb-2026	49874		1475		1390	52739	2212	13	54964
13-Feb-2026	49848		1464		1399	52711	2277	13	55001
20-Feb-2026	49860		1455		1374	52689	2304	13	55006
27-Feb-2026	49899		1447		1403	52749	2316	13	55078
06-Mar-2026	49854		1448		1412	52714	2364	13	55091
13-Mar-2026	49912		1458		1410	52780	2360	13	55153
20-Mar-2026	49857		1468		1406	52731	2430	13	55174
27-Mar-2026	49997		1464		1394	52855	2372	13	55240
03-Apr-2026	50055		1464		1396	52915	2389	13	55317
10-Apr-2026	50068		1461		1400	52929	2396	12	55337
17-Apr-2026	50094		1462		1382	52938	2357	12	55307
24-Apr-2026	49963		1478		1363	52804	2440	12	55256
01-May-2026	50043		1482		1387	52912	2481	12	55405

## Offenders housed in facilities for state prisoners

Week ending	In facilities other than state prisons							Total Inmates
	In state prisons	Transition centers	County prisons	Pre-rel centers	Private prisons	Inmate boot camps	Total others	
09-May-2025	34900	2544	4495		8029	1	15069	49969
16-May-2025	34954	2554	4502		8032	1	15089	50043
23-May-2025	35001	2577	4501		8028	0	15106	50107
30-May-2025	35065	2605	4511		8043	0	15159	50224
06-Jun-2025	35068	2587	4440		8038	0	15065	50133
13-Jun-2025	35092	2599	4416		8032	0	15047	50139
20-Jun-2025	35027	2590	4442		7986	0	15018	50045
27-Jun-2025	35203	2645	4483		8032	0	15160	50363
04-Jul-2025	35284	2652	4430		8038	0	15120	50404
11-Jul-2025	35380	2669	4436		8044	0	15149	50529
18-Jul-2025	35399	2690	4400		8036	0	15126	50525
25-Jul-2025	35464	2698	4363		8045	0	15106	50570
01-Aug-2025	35516	2709	4347		8032	0	15088	50604
08-Aug-2025	35507	2698	4347		8034	0	15079	50586
15-Aug-2025	35522	2714	4349		8039	0	15102	50624
22-Aug-2025	35539	2726	4348		8041	0	15115	50654
29-Aug-2025	35576	2714	4352		8041	0	15107	50683
05-Sep-2025	35478	2721	4352		8072	0	15145	50623
12-Sep-2025	35437	2739	4396		8099	0	15234	50671
19-Sep-2025	35399	2749	4378		8078	0	15205	50604
26-Sep-2025	35420	2732	4384		8106	0	15222	50642
03-Oct-2025	35389	2727	4371		8105	0	15203	50592
10-Oct-2025	35390	2705	4350		8097	0	15152	50542
17-Oct-2025	35402	2716	4337		8110	0	15163	50565
24-Oct-2025	35359	2744	4297		8068	0	15109	50468
31-Oct-2025	35328	2751	4237		8065	0	15053	50381
07-Nov-2025	35288	2748	4167		8028	0	14943	50231
14-Nov-2025	35293	2750	4193		8040	0	14983	50276
21-Nov-2025	35342	2756	4211		8034	0	15001	50343
28-Nov-2025	35305	2745	4168		8053	0	14966	50271
05-Dec-2025	35396	2746	4134		8049	0	14929	50325
12-Dec-2025	35370	2759	4130		8058	0	14947	50317
19-Dec-2025	35414	2755	4107		8049	1	14912	50326
26-Dec-2025	35409	2737	4082		8062	1	14882	50291
02-Jan-2026	35371	2745	4056		8065	1	14867	50238
09-Jan-2026	35363	2780	4032		8074	1	14887	50250
16-Jan-2026	35354	2745	3988		8107	1	14841	50195
23-Jan-2026	35302	2731	3960		8098	1	14790	50092
30-Jan-2026	35249	2730	3926		8074	1	14731	49980
06-Feb-2026	35179	2729	3891		8074	1	14695	49874
13-Feb-2026	35121	2721	3906		8099	1	14727	49848
20-Feb-2026	35112	2747	3898		8102	1	14748	49860
27-Feb-2026	35132	2750	3907		8109	1	14767	49899
06-Mar-2026	35106	2739	3932		8076	1	14748	49854
13-Mar-2026	35010	2751	4084		8066	1	14902	49912
20-Mar-2026	34880	2758	4146		8072	1	14977	49857
27-Mar-2026	34907	2761	4212		8116	1	15090	49997
03-Apr-2026	34940	2757	4236		8122	0	15115	50055
10-Apr-2026	34946	2755	4263		8104	0	15122	50068
17-Apr-2026	34929	2777	4289		8099	0	15165	50094
24-Apr-2026	34821	2773	4275		8094	0	15142	49963
01-May-2026	34845	2792	4297		8109	0	15198	50043

## Offenders waiting in local jails for state facilities

Week ending	Probationers waiting in jail				Probationers waiting in jail					Assigned females
	.. for PDCs	.. for RSAT	.. for boot camps	Total	Total backlog	Not yet assigned	In adm process	Delayed transport	Ready for pickup	
09-May-2025	11	2	1	14	1192	9	1183	171	1012	58
16-May-2025	11	2	1	14	1355	8	1347	178	1169	62
23-May-2025	11	2	1	14	1453	8	1445	181	1264	69
30-May-2025	11	2	1	14	1477	9	1468	184	1284	58
06-Jun-2025	11	2	1	14	1520	8	1512	176	1336	65
13-Jun-2025	11	2	1	14	1524	8	1516	172	1344	52
20-Jun-2025	11	2	1	14	1543	9	1534	179	1355	46
27-Jun-2025	11	2	1	14	1425	9	1416	179	1237	35
04-Jul-2025	11	2	1	14	1394	9	1385	202	1183	53
11-Jul-2025	11	2	1	14	1191	9	1182	201	981	50
18-Jul-2025	11	2	1	14	1246	9	1237	198	1039	58
25-Jul-2025	11	2	1	14	1318	9	1309	203	1106	70
01-Aug-2025	11	2	1	14	1266	9	1257	192	1065	59
08-Aug-2025	11	2	1	14	1112	11	1101	177	924	40
15-Aug-2025	11	2	1	14	1113	10	1103	174	929	51
22-Aug-2025	12	2	1	15	1204	10	1194	171	1023	60
29-Aug-2025	12	2	1	15	1208	8	1200	175	1025	65
05-Sep-2025	12	2	1	15	1164	8	1156	177	979	63
12-Sep-2025	12	2	1	15	1168	8	1160	178	982	68
19-Sep-2025	12	2	1	15	1350	8	1342	176	1166	61
26-Sep-2025	12	2	1	15	1456	9	1447	169	1278	79
03-Oct-2025	12	2	1	15	1545	8	1537	169	1368	75
10-Oct-2025	12	2	1	15	1568	8	1560	171	1389	66
17-Oct-2025	12	2	1	15	1619	9	1610	171	1439	73
24-Oct-2025	12	2	1	15	1738	8	1730	172	1558	60
31-Oct-2025	12	2	1	15	1861	10	1851	167	1684	53
07-Nov-2025	12	2	1	15	1898	11	1887	168	1719	58
14-Nov-2025	12	2	1	15	1907	12	1895	169	1726	67
21-Nov-2025	12	2	1	15	1956	11	1945	175	1770	86
28-Nov-2025	12	2	1	15	2047	11	2036	168	1868	79
05-Dec-2025	11	2	1	14	1989	10	1979	171	1808	72
12-Dec-2025	10	2	1	13	2063	11	2052	172	1880	79
19-Dec-2025	10	2	1	13	2078	11	2067	172	1895	53
26-Dec-2025	10	2	1	13	2177	11	2166	175	1991	61
02-Jan-2026	10	2	1	13	2171	11	2160	172	1988	45
09-Jan-2026	10	2	1	13	1965	10	1955	175	1780	34
16-Jan-2026	10	2	1	13	2042	9	2033	175	1858	59
23-Jan-2026	10	2	1	13	2157	9	2148	170	1978	69
30-Jan-2026	10	2	1	13	2182	9	2173	168	2005	52
06-Feb-2026	10	2	1	13	2212	9	2203	164	2039	61
13-Feb-2026	10	2	1	13	2277	9	2268	164	2104	71
20-Feb-2026	10	2	1	13	2304	9	2295	167	2128	64
27-Feb-2026	10	2	1	13	2316	9	2307	168	2139	47
06-Mar-2026	10	2	1	13	2364	9	2355	172	2183	66
13-Mar-2026	10	2	1	13	2360	10	2350	174	2176	76
20-Mar-2026	10	2	1	13	2430	10	2420	173	2247	49
27-Mar-2026	10	2	1	13	2372	10	2362	172	2190	62
03-Apr-2026	10	2	1	13	2389	10	2379	177	2202	69
10-Apr-2026	9	2	1	12	2396	11	2385	183	2202	57
17-Apr-2026	9	2	1	12	2357	11	2346	180	2166	53
24-Apr-2026	9	2	1	12	2440	13	2427	178	2249	55
01-May-2026	9	2	1	12	2481	12	2469	178	2291	67