

# Friday Report - overview and contents

The pages in The Friday Report are about adult offenders in Georgia's prisons and jails. They contain statistical snapshots and trends in the populations and movements of offenders in the state prison system, on probation, on parole, and in local jails. Information comes from databases of the Georgia Department of Corrections (GDC) and the Board of Pardons and Paroles, and from data provided by local jailers. Information is summarized into tables in the GDC/Parole Data Warehouse, and is extracted into these pages each Friday. Pages are organized according to the table that supplied the data.

<p><b>The Monthly Research Table</b>, named "MO_RESRCH" or simply "MO", contains data about state prisoners, grouped into statistically interesting categories. The table contains one record per month, from January 2000 to the present. Despite its being "monthly", it is updated weekly, because some data trickles in for several weeks before it becomes stable history.</p>	
Page	Content
MO-01	Clemencies and maxouts. Monthly graph from 2000 to present shows the monthly departures from prison via actions by the Georgia Parole Board (clemencies), and via service of 100% of the court ordered sentence (maxouts)
MO-02	48 months of releases. Table shows counts and percentages of releases via clemencies and maxouts, with and without probation to follow, for each of the past 48 months.
MO-03	Methamphetamine. Monthly graph from 2000 to present shows admissions, departures, population, and percent of population of inmates with a current offense of methamphetamine possession, sale, manufacturing, or trafficking, and the changing racial composition of the methamphetamine population
MO-04	Non-violent first incarcerants. Monthly graph from 2000 to present shows admissions, departures, population, and percent of population of inmates without violent or sex crimes, who are serving their first Georgia felony incarceration.
MO-05	Seven Deadly Sins. Monthly graph from 2000 to present shows admissions, departures, population, and percent of population of inmates convicted of kidnapping, armed robbery, rape, aggravated sodomy, aggravated sexual battery, and aggravated child molestation, for whom especially severe penalties are prescribed.
MO-06	48 months of inmate subpopulations. Table shows number and percentage of white and non-white inmates with methamphetamine offenses, and non-violent first incarcerants, and inmates convicted of the Seven Deadly Sins.
MO-07	Inmate age overview. Line graph shows the average age of the inmate population, by month from 2000 to the present. Pie chart shows the number of currently active inmates in their teens, twenties, thirties, forties, fifties, and age sixty+.
MO-08	Counts by age group. Graphs show the count, by month from 2000 to the present, of inmates in their teens, twenties, thirties, forties, fifties, and age sixty+.
MO-09	Percentages by age group. Graphs show the percentages, by month from 2000 to the present, of inmates in their teens, twenties, thirties, forties, fifties, and age sixty+.
MO-10	48 months of inmate ages. Table shows average age of the standing population, and counts and percentages of teens, twenties, thirties, forties, fifties, and sixty+, for each of the past 48 months.

# Friday Report - overview and contents (continued)

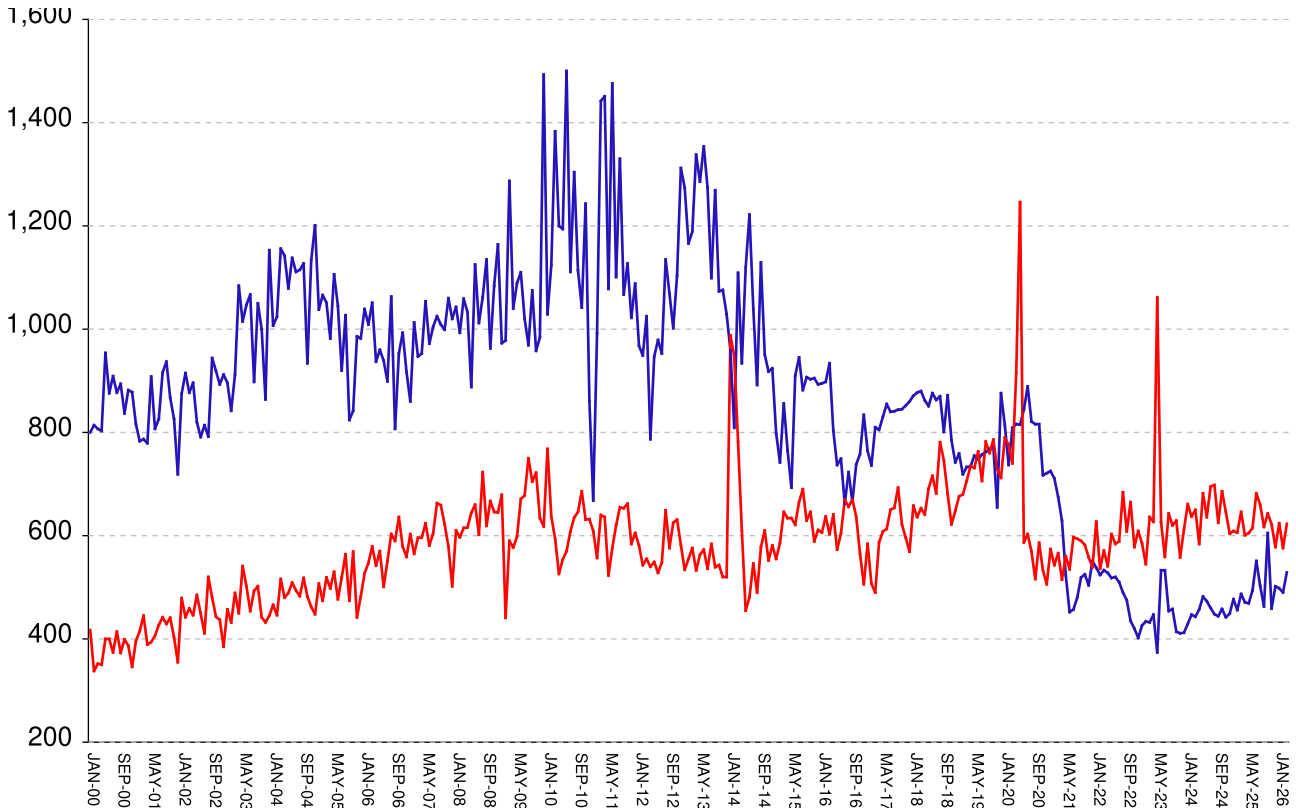
**The MSR Table** is based on the Management Summary Report (MSR), a snapshot report posted each week in GDC's Scribe database. MSR\_RESRCH gathers that data into weekly trends, with one record for each Friday since March 20th, 2009

Page	Content
<b>MSR-01</b>	All housed offenders. Weekly graph from March 20, 2009 to present, showing counts of inmates in state prisons, transitional centers, county prisons, private prisons, inmate boot camps, parole revocation centers, probation Residential Substance Abuse Treatment (RSAT), probation boot camps, probation detention centers, plus the inmate jail backlog and probationers in jail waiting for state facilities.
<b>MSR-02</b>	Probationers in jail. Weekly graph from March 20, 2009 to present, showing counts of probationers in local jails awaiting placement in probation detention centers, probation RSAT centers, and probation boot camps.
<b>MSR-03</b>	State inmates in jail. Weekly graph from March 20, 2009 to present, showing counts of state inmates in local jails awaiting placement in state prison facilities – including those who have not yet been assigned to a diagnostic center, those whose transportation has been delayed for some reason, and those who are ready to be picked up.
<b>MSR-04</b>	Female state inmates in jail. Weekly graph from March 20, 2009 to present, showing counts of female state inmates awaiting placement in a state prison for females.
<b>MSR-05</b>	52-week table: housed offenders. Data for each of the past 52 weeks, showing total prison inmates, parolees in revocation centers, probationers in RSAT/boot camp/detention centers, inmate jail backlog, probationers in jail waiting for facilities, with subtotals.
<b>MSR-06</b>	52-week table: state prisoners. Data for each of the past 52 weeks, showing inmates in state prisons, transition centers, county prisons, pre-release centers, private prisons, and inmate boot camps, with subtotals.
<b>MSR-07</b>	52-week table: waiting in jail. Data for each of the past 52 weeks, showing probationers waiting for detention centers, RSAT, and boot camp; and state prisoners not yet assigned to diagnostic centers, in admission process, with delayed transport, and ready for pickup, with subtotals.

# Releases by clemency and maxout, Jan-2000 to Mar-2026

There are two main ways of being released from a Georgia prison -- by actions of the Board of Pardons and Paroles ("Clemencies") and by service of 100% of the court-ordered sentences ("Maxouts").

"Clemency" includes paroles, reprieves, commutations, and transfer to other confinement prior to expiration of sentence. "Other Releases" includes deaths, and sentences modified or overturned by the courts. Clemencies and maxouts may or may not be followed by periods of probation.



A. Clemency with probation to follow	RISES BY	24	from	427	to	451
B. Clemency only	RISES BY	15	from	63	to	78
C. Maxout with probation to follow	RISES BY	50	from	520	to	570
D. Maxout only (unsupervised)	falls by	3	from	56	to	53
E. Other releases	RISES BY	1	from	27	to	28
F. Total releases (A+B+C+D+E)	RISES BY	87	from	1093	to	1180
<b>G. Total clemencies (A+B) (top line)</b>	<b>RISES BY</b>	<b>39</b>	<b>from</b>	<b>490</b>	<b>to</b>	<b>529</b>
<b>H. Total maxouts (C+D) (bottom line)</b>	<b>RISES BY</b>	<b>47</b>	<b>from</b>	<b>576</b>	<b>to</b>	<b>623</b>
I. % of releases by clemency (G/F)	...	...	...	44.83%	at	44.83%
J. % of releases by maxout (H/F)	RISES BY	.1%	from	52.7%	to	52.8%
K. Supervised releases (A+B+C)	RISES BY	89	from	1010	to	1099
L. % unsupervised releases (D/F)	falls by	.63%	from	5.12%	to	4.49%
M. % supervised releases (K/F)	RISES BY	.73%	from	92.41%	to	93.14%

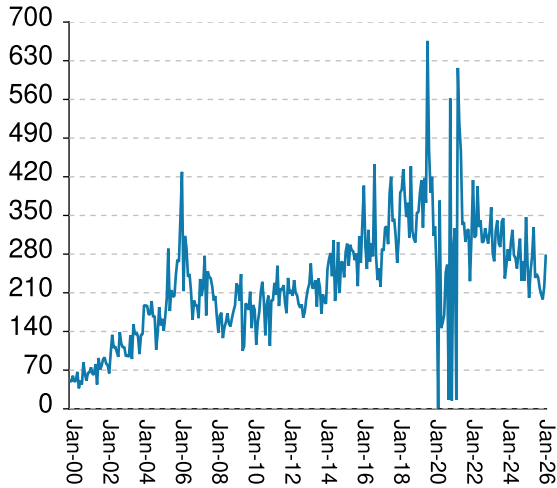
## Monthly releases from prison by type of release, for the past 48 months

	A	B	C	D	E	F	G	H	I	J
<b>Month</b>	<b>Clemency + Prob</b>	<b>Clemency Only</b>	<b>Maxout + Prob</b>	<b>Maxout Only</b>	<b>Other rels</b>	<b>Total Releases (A+B+C+D+E)</b>	<b>Total Clemency (A+B)</b>	<b>Total Maxout (C+D)</b>	<b>Percent Clemency (G/F)</b>	<b>Percent Maxout (H/F)</b>
Apr-22	454	74	469	72	16	1085	528	541	48.66%	49.86%
May-22	439	79	539	64	26	1147	518	603	45.16%	52.57%
Jun-22	454	66	527	57	21	1125	520	584	46.22%	51.91%
Jul-22	439	71	529	60	14	1113	510	589	45.82%	52.92%
Aug-22	424	66	617	67	21	1195	490	684	41.00%	57.24%
Sep-22	397	78	548	60	18	1101	475	608	43.14%	55.22%
Oct-22	374	61	604	61	23	1123	435	665	38.74%	59.22%
Nov-22	367	53	522	56	19	1017	420	578	41.30%	56.83%
Dec-22	342	60	549	60	28	1039	402	609	38.69%	58.61%
Jan-23	375	51	526	59	23	1034	426	585	41.20%	56.58%
Feb-23	388	46	491	54	17	996	434	545	43.57%	54.72%
Mar-23	377	55	574	62	24	1092	432	636	39.56%	58.24%
Apr-23	392	55	574	53	26	1100	447	627	40.64%	57.00%
May-23	326	48	929	132	20	1455	374	1061	25.70%	72.92%
Jun-23	460	73	567	59	19	1178	533	626	45.25%	53.14%
Jul-23	459	74	510	49	25	1117	533	559	47.72%	50.04%
Aug-23	401	53	589	54	22	1119	454	643	40.57%	57.46%
Sep-23	402	56	576	44	10	1088	458	620	42.10%	56.99%
Oct-23	363	51	578	51	31	1074	414	629	38.55%	58.57%
Nov-23	354	57	490	68	19	988	411	558	41.60%	56.48%
Dec-23	366	46	554	57	21	1044	412	611	39.46%	58.52%
Jan-24	368	61	599	62	32	1122	429	661	38.24%	58.91%
Feb-24	396	51	577	60	24	1108	447	637	40.34%	57.49%
Mar-24	379	64	585	65	20	1113	443	650	39.80%	58.40%
Apr-24	409	48	531	53	33	1074	457	584	42.55%	54.38%
May-24	426	56	605	77	26	1190	482	682	40.50%	57.31%
Jun-24	412	61	576	60	23	1132	473	636	41.78%	56.18%
Jul-24	398	62	628	67	38	1193	460	695	38.56%	58.26%
Aug-24	381	67	639	59	19	1165	448	698	38.45%	59.91%
Sep-24	379	65	561	64	34	1103	444	625	40.25%	56.66%
Oct-24	399	59	633	53	28	1172	458	686	39.08%	58.53%
Nov-24	387	55	592	54	23	1111	442	646	39.78%	58.15%
Dec-24	392	57	555	49	33	1086	449	604	41.34%	55.62%
Jan-25	416	61	560	49	30	1116	477	609	42.74%	54.57%
Feb-25	400	56	548	58	17	1079	456	606	42.26%	56.16%
Mar-25	432	55	593	53	23	1156	487	646	42.13%	55.88%
Apr-25	409	62	556	45	18	1090	471	601	43.21%	55.14%
May-25	424	45	550	55	26	1100	469	605	42.64%	55.00%
Jun-25	433	61	579	36	36	1145	494	615	43.14%	53.71%
Jul-25	491	60	620	62	33	1266	551	682	43.52%	53.87%
Aug-25	431	72	602	58	16	1179	503	660	42.66%	55.98%
Sep-25	405	58	575	42	26	1106	463	617	41.86%	55.79%
Oct-25	518	87	592	51	26	1274	605	643	47.49%	50.47%
Nov-25	405	54	581	41	22	1103	459	622	41.61%	56.39%
Dec-25	443	59	520	58	28	1108	502	578	45.31%	52.17%
Jan-26	426	72	571	53	35	1157	498	624	43.04%	53.93%
Feb-26	427	63	520	56	27	1093	490	576	44.83%	52.70%
Mar-26	451	78	570	53	28	1180	529	623	44.83%	52.80%

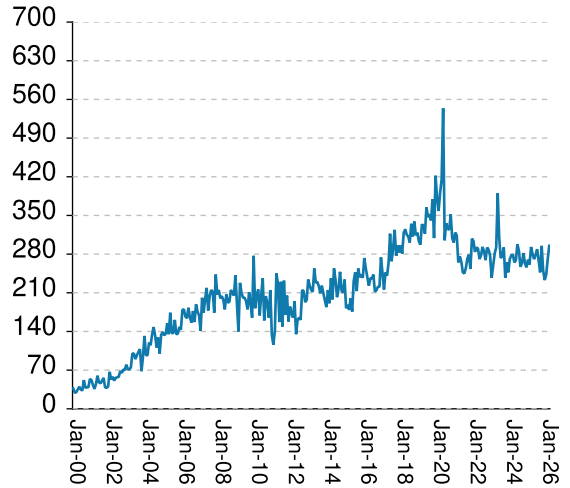
# Inmates with meth crimes, by month, Jan-2000 to Mar-2026

Methamphetamine is one of the most addictive drugs ever known. At first it induces intense euphoria, but with continued use causes severe depression and physical deterioration, including the dental catastrophe known as "meth mouth". Georgia's meth epidemic began in the early 2000s and has seen continued growth over the last 2 decades, with continued expansion beyond the originally predominate use by northern county white males.

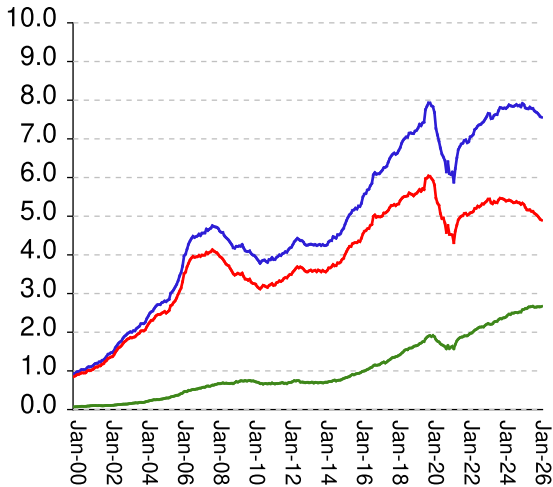
### Admissions



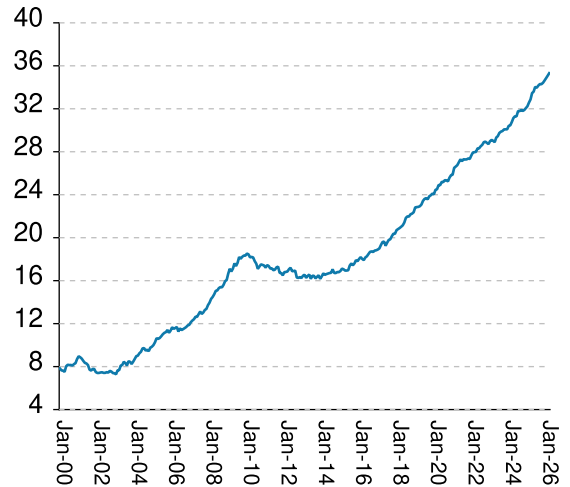
### Releases



### Population x1000



### Percent Non-White

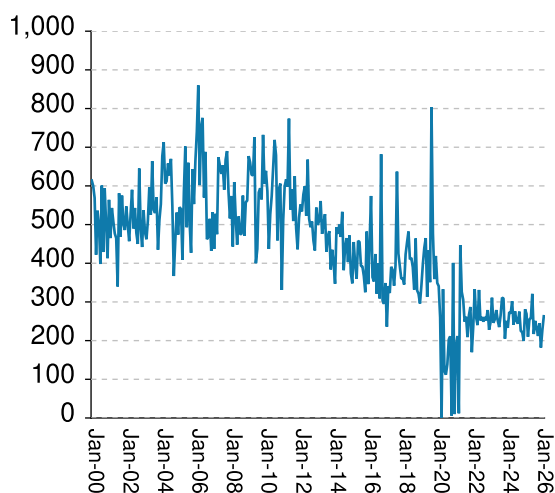


Methamphetamine admissions	RISES BY	56	from	221	to	277
Methamphetamine releases	RISES BY	24	from	271	to	295
<b>Methamphetamine population</b>	<b>falls by</b>	<b>18</b>	<b>from</b>	<b>7575</b>	<b>to</b>	<b>7557</b>
<b>Meth white population</b>	<b>falls by</b>	<b>22</b>	<b>from</b>	<b>4918</b>	<b>to</b>	<b>4896</b>
<b>Meth non-white population</b>	<b>RISES BY</b>	<b>11</b>	<b>from</b>	<b>2657</b>	<b>to</b>	<b>2668</b>
Percent meth inmates who are non-white	RISES BY	.23%	from	35.08%	to	35.31%

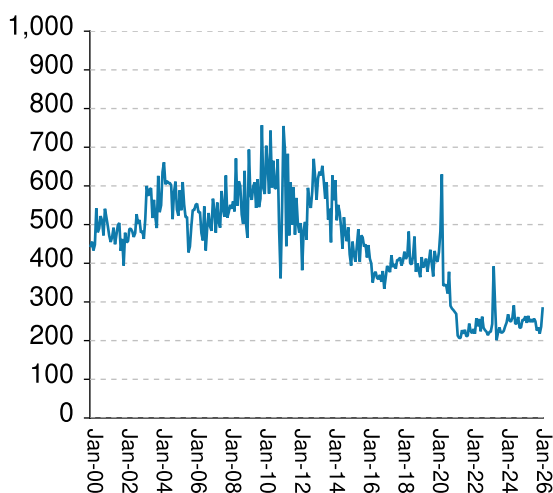
# Non-violent first-incarcerants, by month, Jan-2000 to Mar-2026

Historically, about one in six Georgia prison inmates has been a first-time incarcerant with a non-violent crime. In 2012 Georgia passed HB1176, which aimed to curb the growth of prison population by steering the least dangerous, least hardened offenders away from prison through pre-trial intervention, diversion, drug courts and treatment programs, and raising the dollar thresholds that define property felonies. The expectation is that over time, these measures will reduce the percentage of first-time non-violent incarcerants in prison.

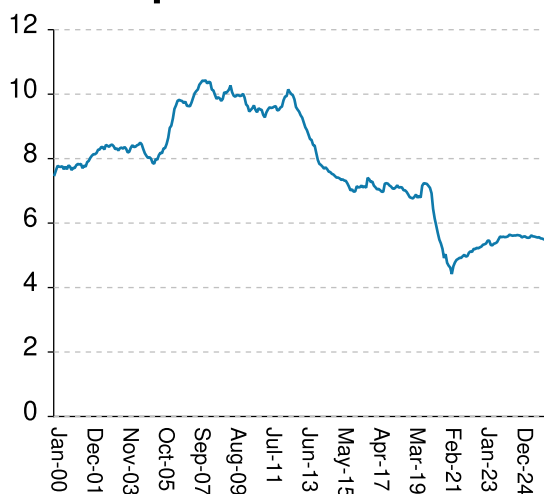
### Admissions



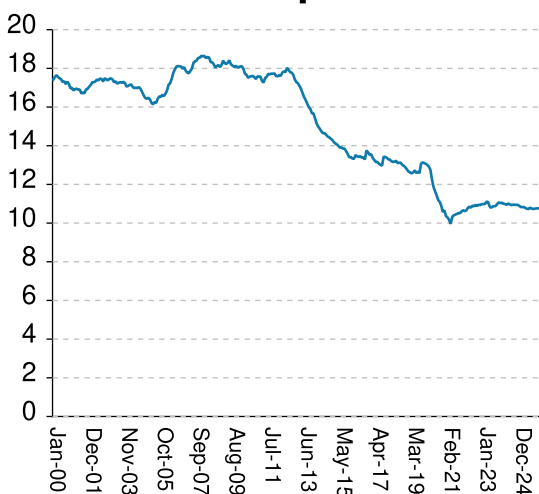
### Releases



### Population x1000



### % Total Population

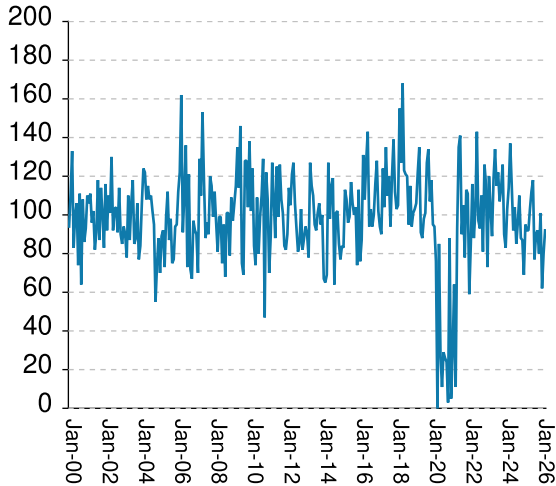


Non-viol/1st-Incar admissions	RISES BY	36	from	227	to	263
Non-viol/1st-Incar releases	RISES BY	47	from	236	to	283
Non-viol/1st-Incar population	falls by	20	from	5518	to	5498
Non-viol/1st-Incar % of total population	falls by	.07%	from	10.75%	to	10.68%

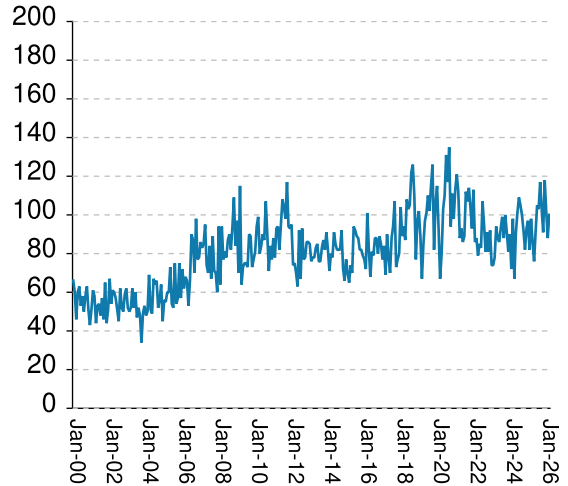
## 'Seven Deadly Sin', by month, Jan-2000 to Mar-2026

Tough legislation in 1995 imposed mandatory ten-year minimum terms for kidnapping, armed robbery, rape, aggravated sodomy, aggravated sexual battery, and aggravated child molestation, and a minimum of 25 years for murder. A second conviction resulted in life without parole. As predicted, longer prison terms caused population to climb steeply for about a decade. It then began to level off, as releases started catching up with admissions. The 2008 dip in percentage of total population (bottom right) was caused by the surge of methamphetamine convictions (Page MO-03). Note: these graphs include inmates convicted before 1995.

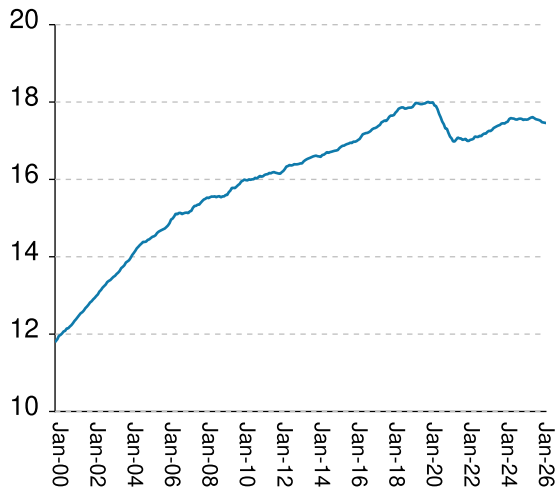
### Admissions



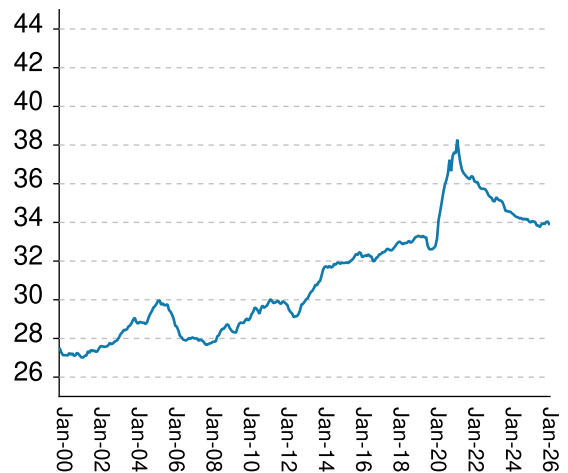
### Releases



### Population x1000



### % Total Population



"Seven Deadly Sin" admissions	RISES BY	12	from	80	to	92
"Seven Deadly Sin" releases	RISES BY	12	from	88	to	100
"Seven Deadly Sin" population	falls by	8	from	17471	to	17463
"Seven Deadly Sin" % of total population	falls by	.13%	from	34.05%	to	33.92%

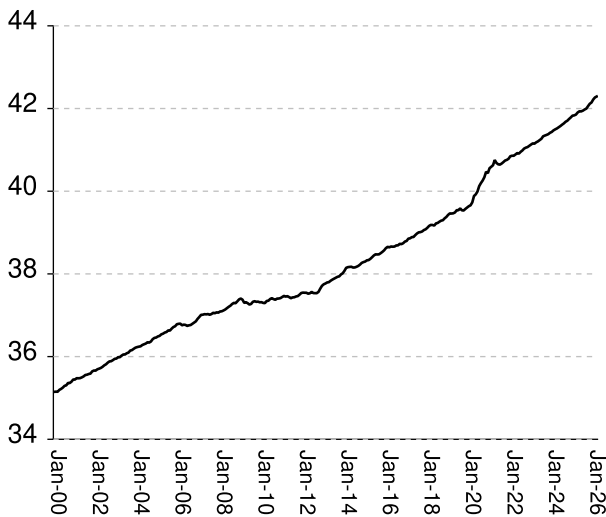
## Inmate subpopulation counts and percentages, for the past 48 months

Month	Methamphetamine						1st Incar Non-Violent		Seven Deadly Sins	
	Total Number	Total Percent	White Number	White Percent	Non White Number	Non White Percent	Number	Percent	Number	Percent
Apr-22	7070	14.98%	5098	72.11%	1979	27.99%	5123	10.85%	17032	36.09%
May-22	7113	15.05%	5123	72.02%	2014	28.31%	5105	10.80%	17049	36.08%
Jun-22	7238	15.18%	5197	71.80%	2050	28.32%	5199	10.90%	17109	35.87%
Jul-22	7274	15.21%	5207	71.58%	2074	28.51%	5195	10.87%	17099	35.76%
Aug-22	7330	15.32%	5260	71.76%	2099	28.64%	5232	10.94%	17097	35.74%
Sep-22	7362	15.36%	5241	71.19%	2127	28.89%	5219	10.89%	17126	35.74%
Oct-22	7373	15.38%	5270	71.48%	2134	28.94%	5247	10.95%	17116	35.71%
Nov-22	7412	15.37%	5318	71.75%	2137	28.83%	5272	10.93%	17161	35.59%
Dec-22	7447	15.34%	5315	71.37%	2138	28.71%	5328	10.98%	17185	35.41%
Jan-23	7509	15.44%	5353	71.29%	2176	28.98%	5342	10.98%	17184	35.32%
Feb-23	7573	15.50%	5389	71.16%	2204	29.10%	5367	10.99%	17230	35.27%
Mar-23	7657	15.57%	5441	71.06%	2222	29.02%	5455	11.10%	17255	35.10%
Apr-23	7646	15.55%	5443	71.19%	2209	28.89%	5458	11.10%	17250	35.09%
May-23	7523	15.37%	5348	71.09%	2206	29.32%	5321	10.87%	17281	35.30%
Jun-23	7536	15.31%	5323	70.63%	2219	29.45%	5309	10.79%	17329	35.21%
Jul-23	7604	15.40%	5383	70.79%	2262	29.75%	5360	10.86%	17351	35.14%
Aug-23	7627	15.42%	5354	70.20%	2278	29.87%	5375	10.87%	17374	35.13%
Sep-23	7628	15.37%	5349	70.12%	2283	29.93%	5406	10.89%	17393	35.05%
Oct-23	7730	15.47%	5419	70.10%	2325	30.08%	5496	11.00%	17407	34.84%
Nov-23	7810	15.49%	5464	69.96%	2350	30.09%	5584	11.07%	17442	34.59%
Dec-23	7799	15.46%	5456	69.96%	2347	30.09%	5564	11.03%	17451	34.59%
Jan-24	7787	15.42%	5446	69.94%	2368	30.41%	5578	11.05%	17444	34.55%
Feb-24	7798	15.42%	5426	69.58%	2375	30.46%	5564	11.00%	17475	34.56%
Mar-24	7787	15.35%	5394	69.27%	2396	30.77%	5570	10.98%	17491	34.48%
Apr-24	7823	15.33%	5402	69.05%	2436	31.14%	5588	10.95%	17561	34.42%
May-24	7878	15.38%	5415	68.74%	2466	31.30%	5641	11.01%	17585	34.34%
Jun-24	7858	15.33%	5402	68.75%	2459	31.29%	5623	10.97%	17576	34.28%
Jul-24	7845	15.29%	5378	68.55%	2493	31.78%	5608	10.93%	17571	34.26%
Aug-24	7842	15.28%	5351	68.24%	2493	31.79%	5616	10.95%	17551	34.21%
Sep-24	7861	15.34%	5355	68.12%	2507	31.89%	5615	10.95%	17547	34.23%
Oct-24	7887	15.33%	5379	68.20%	2508	31.80%	5629	10.94%	17565	34.15%
Nov-24	7856	15.29%	5351	68.11%	2505	31.89%	5621	10.94%	17571	34.19%
Dec-24	7867	15.29%	5345	67.94%	2522	32.06%	5609	10.90%	17565	34.15%
Jan-25	7829	15.26%	5306	67.77%	2523	32.23%	5554	10.83%	17537	34.18%
Feb-25	7915	15.36%	5336	67.42%	2579	32.58%	5582	10.83%	17550	34.05%
Mar-25	7882	15.28%	5302	67.27%	2591	32.87%	5588	10.83%	17544	34.00%
Apr-25	7803	15.15%	5227	66.99%	2611	33.46%	5552	10.78%	17550	34.07%
May-25	7782	15.08%	5167	66.40%	2615	33.60%	5543	10.74%	17577	34.05%
Jun-25	7780	15.04%	5161	66.34%	2648	34.04%	5553	10.73%	17598	34.02%
Jul-25	7820	15.02%	5164	66.04%	2656	33.96%	5619	10.80%	17611	33.84%
Aug-25	7788	14.99%	5128	65.84%	2660	34.16%	5588	10.75%	17585	33.84%
Sep-25	7785	14.97%	5125	65.83%	2670	34.30%	5582	10.73%	17558	33.76%
Oct-25	7728	14.93%	5078	65.71%	2650	34.29%	5566	10.75%	17547	33.90%
Nov-25	7696	14.90%	5050	65.62%	2649	34.42%	5552	10.75%	17536	33.95%
Dec-25	7670	14.85%	5015	65.38%	2656	34.63%	5563	10.77%	17519	33.91%
Jan-26	7625	14.84%	4968	65.15%	2657	34.85%	5527	10.76%	17479	34.02%
Feb-26	7575	14.76%	4918	64.92%	2657	35.08%	5518	10.75%	17471	34.05%
Mar-26	7557	14.68%	4896	64.79%	2668	35.31%	5498	10.68%	17463	33.92%

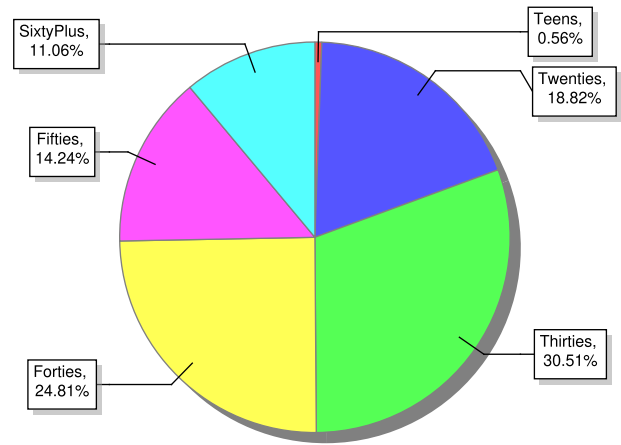
# Overview of inmate age statistics, Jan-2000 to Mar-2026

The "aging inmate population" is a concern in correctional systems throughout America, including Georgia. Here, the increase in inmate age is the result of several factors. Teenagers have been steered away from prison by increased usage of probation and other alternatives, at least for their first convictions. And there has been a surge of middle-aged male sex offenders due to the expanding "It's OK to tell" ethos. But most importantly, more severe sentence lengths and release policies have greatly increased the length of time that most offenders -- especially violent ones -- spend in prison, thereby increasing their average age.

### Average age since 2000



### Current Age



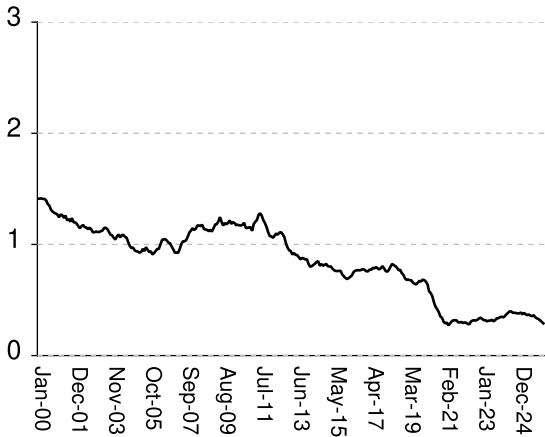
Mar-2026

Average age of active inmates	RISES BY	.02	from	42.27	to	42.29
Number in their teens	falls by	13	from	303	to	290
Percentage in their teens	falls by	.03%	from	.59%	to	.56%
Number in their twenties	RISES BY	27	from	9,664	to	9,691
Percentage in their twenties	falls by	.02%	from	18.84%	to	18.82%
Number in their thirties	RISES BY	46	from	15,667	to	15,713
Percentage in their thirties	falls by	.02%	from	30.54%	to	30.52%
Number in their forties	RISES BY	68	from	12,710	to	12,778
Percentage in their forties	RISES BY	.05%	from	24.77%	to	24.82%
Number in their fifties	RISES BY	38	from	7,296	to	7,334
Percentage in their fifties	RISES BY	.03%	from	14.22%	to	14.25%
Number age sixty and up	RISES BY	33	from	5,665	to	5,698
Percentage age sixty and up	RISES BY	.03%	from	11.04%	to	11.07%

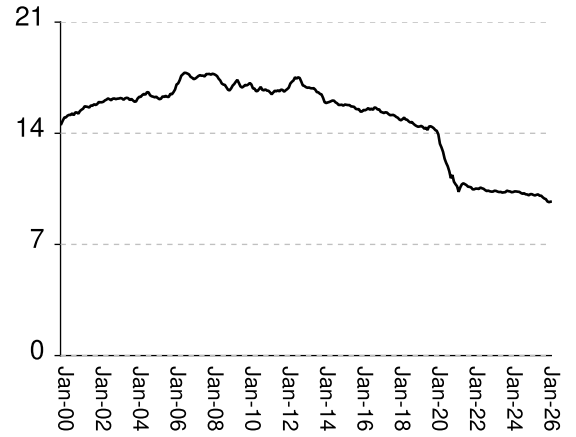
# Monthly counts of inmates by age group, Jan-2000 to Mar-2026

Y-axis of Twenties/Thirties/Forties/Fifties runs from 0 to 21,000. Y-axis of Teens/Sixty+ runs from 0 to 3,000.

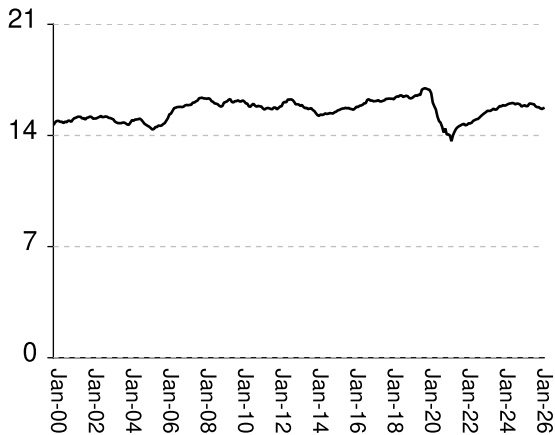
### Teens x 1000



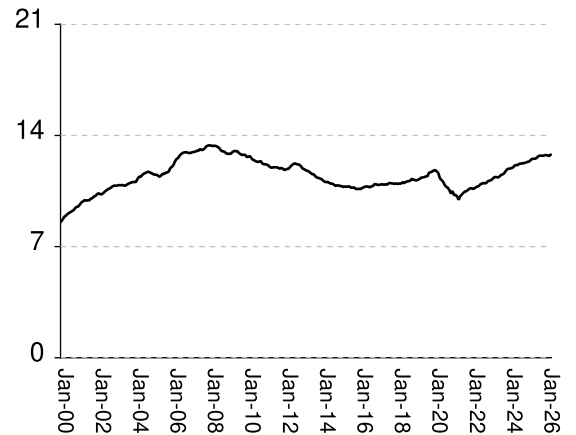
### Twenties x 1000



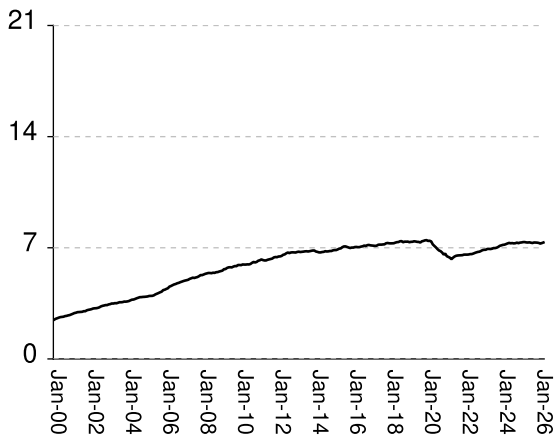
### Thirties x 1000



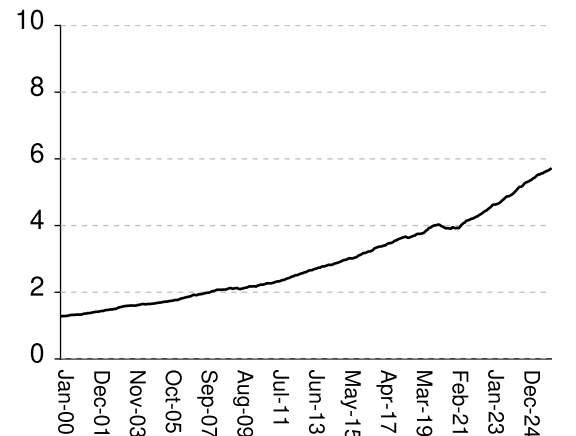
### Forties x 1000



### Fifties x 1000



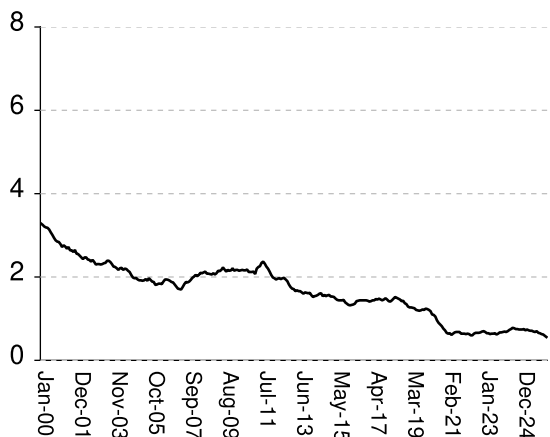
### Sixty & Up x 1000



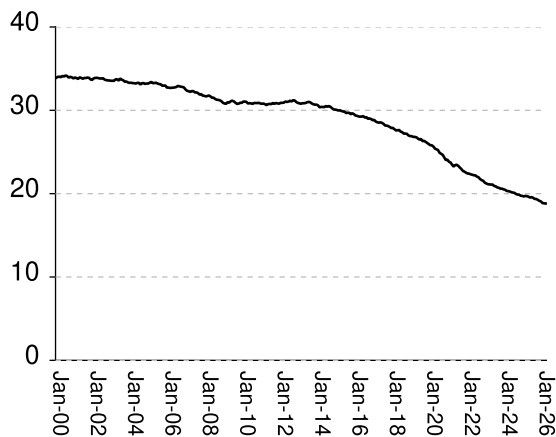
# Monthly percentages of inmates by age group, Jan-2000 to Mar-2026

Y-axis of Twenties/Thirties/Forties/Fifties runs from 0% to 40%. Y-axis of Teens/Sixty+ runs from 0% to 8%

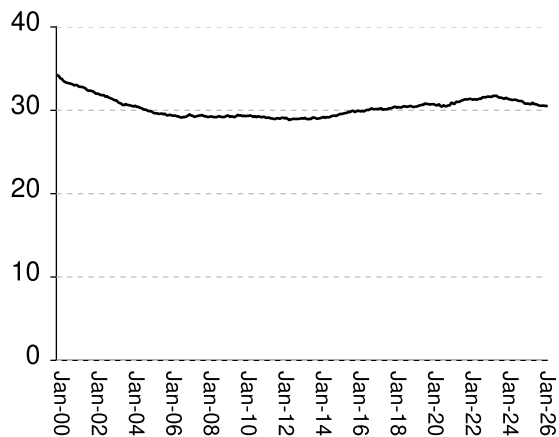
## Teens (%)



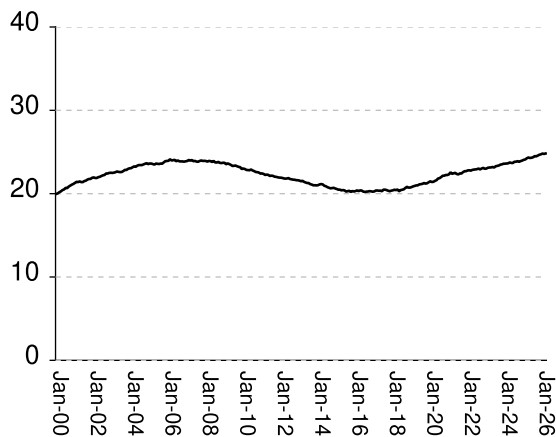
## Twenties (%)



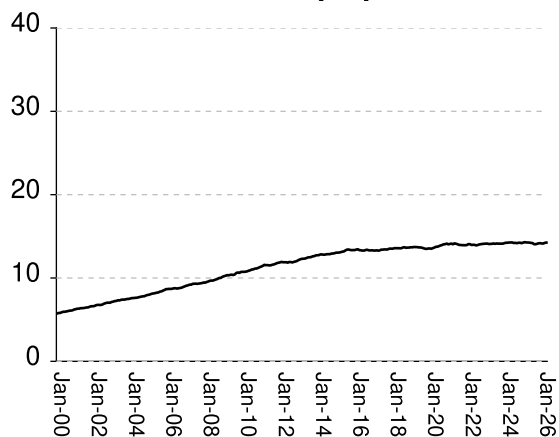
## Thirties (%)



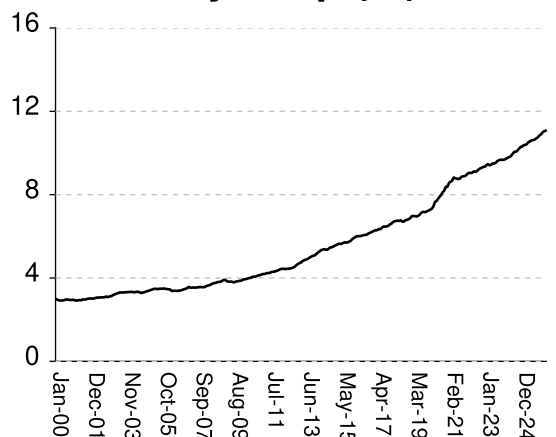
## Forties (%)



## Fifties (%)



## Sixty & Up (%)

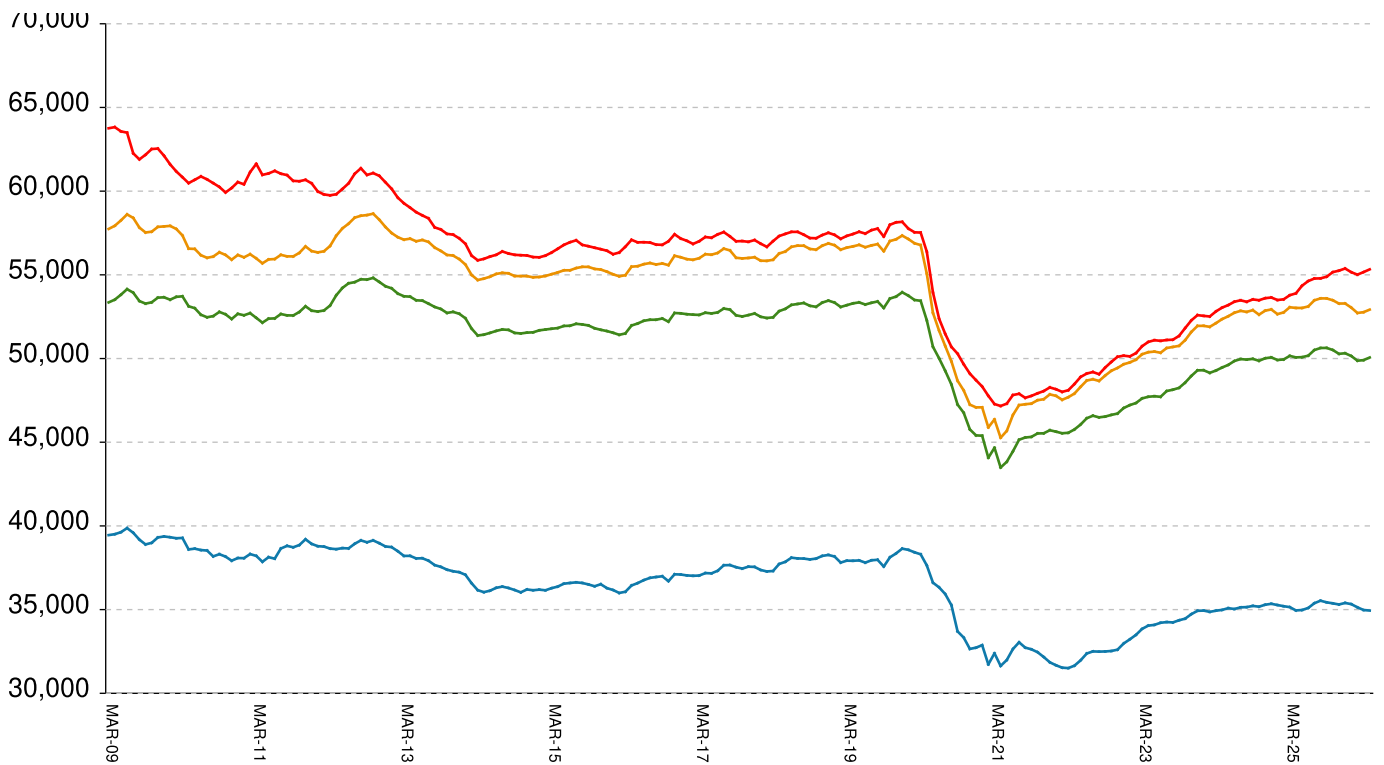


## Inmate counts & percentages by age, for past 48 months

Month	Avg Age	Teens		Twenties		Thirties		Forties		Fifties		Sixty & Up	
		Number	Per cent	Number	Per cent	Number	Per cent	Number	Per cent	Number	Per cent	Number	Per cent
Apr-22	40.89	285	0.60%	10511	22.27%	14757	31.27%	10782	22.85%	6601	13.99%	4274	9.06%
May-22	40.92	282	0.60%	10495	22.21%	14808	31.34%	10815	22.89%	6603	13.97%	4309	9.12%
Jun-22	40.91	307	0.64%	10581	22.19%	14924	31.29%	10926	22.91%	6634	13.91%	4336	9.09%
Jul-22	40.95	315	0.66%	10536	22.04%	14968	31.31%	10967	22.94%	6676	13.96%	4364	9.13%
Aug-22	40.99	318	0.66%	10504	21.96%	15019	31.40%	11008	23.01%	6712	14.03%	4405	9.21%
Sep-22	41.03	315	0.66%	10422	21.75%	15041	31.39%	10979	22.91%	6740	14.06%	4437	9.26%
Oct-22	41.05	322	0.67%	10364	21.62%	15127	31.56%	11033	23.02%	6755	14.09%	4455	9.29%
Nov-22	41.07	334	0.69%	10387	21.54%	15228	31.58%	11135	23.09%	6802	14.11%	4500	9.33%
Dec-22	41.1	341	0.70%	10347	21.32%	15312	31.55%	11157	22.99%	6854	14.12%	4533	9.34%
Jan-23	41.13	329	0.68%	10325	21.22%	15392	31.64%	11196	23.01%	6873	14.13%	4576	9.41%
Feb-23	41.16	318	0.65%	10327	21.14%	15460	31.65%	11288	23.11%	6877	14.08%	4627	9.47%
Mar-23	41.15	318	0.65%	10380	21.11%	15548	31.62%	11376	23.14%	6927	14.09%	4627	9.41%
Apr-23	41.18	308	0.63%	10371	21.09%	15549	31.63%	11384	23.15%	6930	14.10%	4635	9.43%
May-23	41.2	314	0.64%	10326	21.09%	15549	31.76%	11359	23.20%	6921	14.14%	4651	9.50%
Jun-23	41.24	315	0.64%	10299	20.92%	15613	31.72%	11390	23.14%	6940	14.10%	4673	9.49%
Jul-23	41.27	322	0.65%	10308	20.88%	15684	31.76%	11502	23.29%	6980	14.14%	4708	9.53%
Aug-23	41.33	308	0.62%	10264	20.75%	15624	31.59%	11537	23.33%	6981	14.12%	4754	9.61%
Sep-23	41.35	318	0.64%	10280	20.71%	15641	31.52%	11601	23.38%	7006	14.12%	4790	9.65%
Oct-23	41.36	335	0.67%	10292	20.60%	15753	31.53%	11728	23.48%	7055	14.12%	4838	9.68%
Nov-23	41.38	336	0.67%	10386	20.60%	15854	31.44%	11858	23.52%	7121	14.12%	4874	9.67%
Dec-23	41.41	345	0.68%	10352	20.52%	15833	31.38%	11904	23.59%	7152	14.18%	4877	9.67%
Jan-24	41.43	350	0.69%	10336	20.47%	15908	31.51%	11916	23.60%	7183	14.23%	4898	9.70%
Feb-24	41.47	344	0.68%	10287	20.34%	15879	31.40%	11946	23.62%	7195	14.23%	4923	9.74%
Mar-24	41.5	353	0.70%	10301	20.30%	15901	31.34%	11995	23.64%	7233	14.26%	4960	9.78%
Apr-24	41.52	371	0.73%	10340	20.26%	15961	31.28%	12112	23.74%	7275	14.26%	5006	9.81%
May-24	41.55	384	0.75%	10335	20.18%	16002	31.25%	12134	23.69%	7307	14.27%	5057	9.87%
Jun-24	41.58	398	0.78%	10321	20.13%	16018	31.25%	12142	23.68%	7282	14.20%	5112	9.97%
Jul-24	41.61	397	0.77%	10309	20.10%	16046	31.28%	12221	23.83%	7294	14.22%	5159	10.06%
Aug-24	41.64	385	0.75%	10240	19.96%	16026	31.23%	12226	23.83%	7276	14.18%	5163	10.06%
Sep-24	41.68	385	0.75%	10194	19.89%	15960	31.14%	12249	23.90%	7287	14.22%	5186	10.12%
Oct-24	41.7	383	0.74%	10223	19.87%	16008	31.12%	12255	23.82%	7323	14.24%	5253	10.21%
Nov-24	41.75	379	0.74%	10157	19.76%	15994	31.12%	12288	23.91%	7289	14.18%	5289	10.29%
Dec-24	41.78	380	0.74%	10147	19.73%	15953	31.01%	12332	23.97%	7326	14.24%	5306	10.31%
Jan-25	41.83	387	0.75%	10094	19.67%	15819	30.83%	12346	24.06%	7336	14.30%	5326	10.38%
Feb-25	41.83	371	0.72%	10165	19.72%	15873	30.79%	12427	24.11%	7358	14.27%	5355	10.39%
Mar-25	41.85	384	0.74%	10166	19.70%	15902	30.82%	12512	24.25%	7360	14.26%	5381	10.43%
Apr-25	41.9	371	0.72%	10115	19.64%	15843	30.76%	12538	24.34%	7338	14.25%	5422	10.53%
May-25	41.93	364	0.71%	10087	19.54%	15856	30.72%	12533	24.28%	7332	14.21%	5443	10.55%
Jun-25	41.93	369	0.71%	10126	19.58%	16007	30.94%	12575	24.31%	7344	14.20%	5489	10.61%
Jul-25	41.95	359	0.69%	10150	19.50%	16007	30.75%	12683	24.37%	7319	14.06%	5530	10.62%
Aug-25	41.98	355	0.68%	10067	19.37%	15978	30.75%	12730	24.50%	7302	14.05%	5530	10.64%
Sep-25	42	363	0.70%	10069	19.36%	15961	30.69%	12730	24.48%	7334	14.10%	5563	10.70%
Oct-25	42.06	344	0.66%	9968	19.26%	15833	30.59%	12720	24.57%	7329	14.16%	5566	10.75%
Nov-25	42.11	335	0.65%	9890	19.14%	15781	30.55%	12743	24.67%	7323	14.18%	5601	10.84%
Dec-25	42.14	328	0.63%	9851	19.07%	15782	30.55%	12770	24.72%	7306	14.14%	5626	10.89%
Jan-26	42.22	317	0.62%	9703	18.88%	15708	30.57%	12746	24.81%	7264	14.14%	5642	10.98%
Feb-26	42.27	303	0.59%	9664	18.84%	15667	30.54%	12710	24.77%	7296	14.22%	5665	11.04%
Mar-26	42.29	290	0.56%	9691	18.82%	15713	30.52%	12778	24.82%	7334	14.25%	5698	11.07%

# All housed offenders under GDC jurisdiction

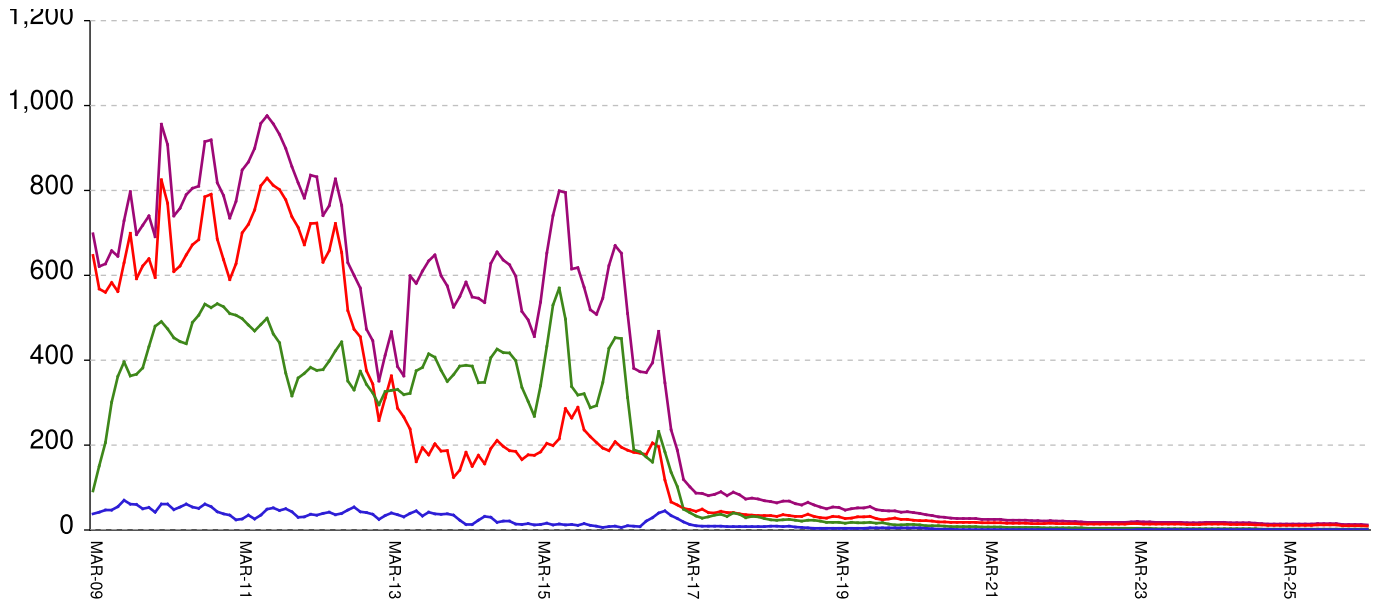
March 20, 2009 through April 10, 2026



<b>All in bed + probs in jail + backlog</b>	<b>RISES BY</b>	<b>20</b>	<b>from</b>	<b>55,317</b>	<b>to</b>	<b>55,337</b>
Probationers in jail	falls by	1	from	13	to	12
Inmate jail backlog	RISES BY	7	from	2,389	to	2,396
<b>All in beds: inmate + Prob + parole</b>	<b>RISES BY</b>	<b>14</b>	<b>from</b>	<b>52,915</b>	<b>to</b>	<b>52,929</b>
Total probationers in beds	RISES BY	1	from	2,860	to	2,861
Probation detention centers	RISES BY	4	from	1,396	to	1,400
Probation boot camps	falls by	...	from		to	
Probation RSAT	falls by	3	from	1,464	to	1,461
Parole revocation centers	falls by	...	from		to	
<b>All in inmate beds: state + other</b>	<b>RISES BY</b>	<b>13</b>	<b>from</b>	<b>50,055</b>	<b>to</b>	<b>50,068</b>
Other inmate facilities:	RISES BY	7	from	15,115	to	15,122
Inmate boot camps	...	...	...	0	at	0
Private prisons	falls by	18	from	8,122	to	8,104
County prisons	RISES BY	27	from	4,236	to	4,263
Transitional centers	falls by	2	from	2,757	to	2,755
<b>In state prisons only</b>	<b>RISES BY</b>	<b>6</b>	<b>from</b>	<b>34,940</b>	<b>to</b>	<b>34,946</b>

# Probationers in jail awaiting placement in facilities

March 20, 2009 through April 10, 2026



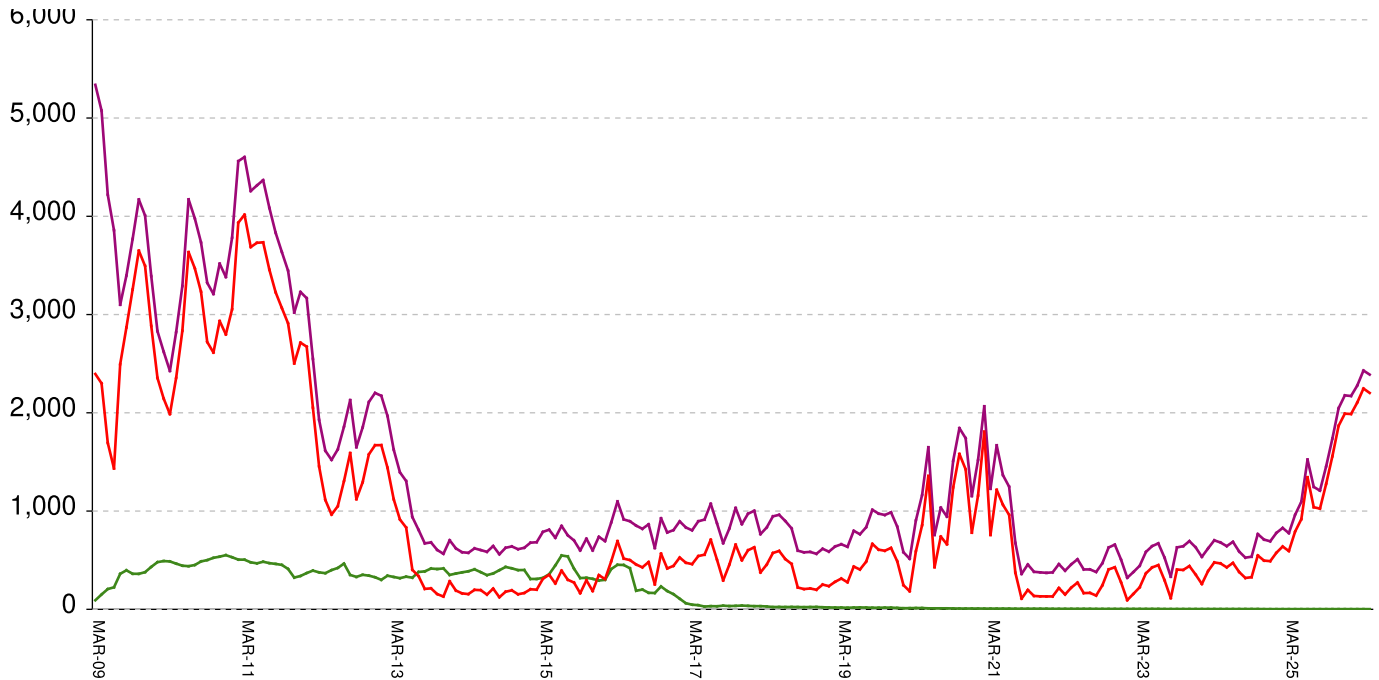
This graph shows, for each Friday since March 20 2009, the number of sentenced felony probationers who were waiting in jail for placement in facilities that GDC operates for housing probationers -- detention centers, probation residential substance abuse treatment (RSAT) centers, and probation boot camps. Counts include both those offenders sentenced directly from court, and those whose street probation was revoked.

<b>Total probationers waiting in jail</b>	<b>falls by</b>	<b>1</b>	<b>from</b>	<b>13</b>	<b>to</b>	<b>12</b>
<b>...waiting for detention centers</b>	<b>falls by</b>	<b>1</b>	<b>from</b>	<b>10</b>	<b>to</b>	<b>9</b>
<b>...waiting for probation RSAT</b>	<b>...</b>	<b>...</b>	<b>...</b>	<b>level</b>	<b>at</b>	<b>2</b>
<b>...waiting for probation boot camps</b>	<b>...</b>	<b>...</b>	<b>...</b>	<b>level</b>	<b>at</b>	<b>1</b>

The highest number of probationers waiting in jail was	994	on	05-MAR-10
...highest number waiting for detention centers was	859	on	05-MAR-10
...highest number waiting for probation RSAT was	592	on	10-JUL-15
...highest number waiting for probation boot camps was	70	on	18-SEP-09

# State inmates in jail awaiting placement in facilities

March 20, 2009 through April 10, 2026



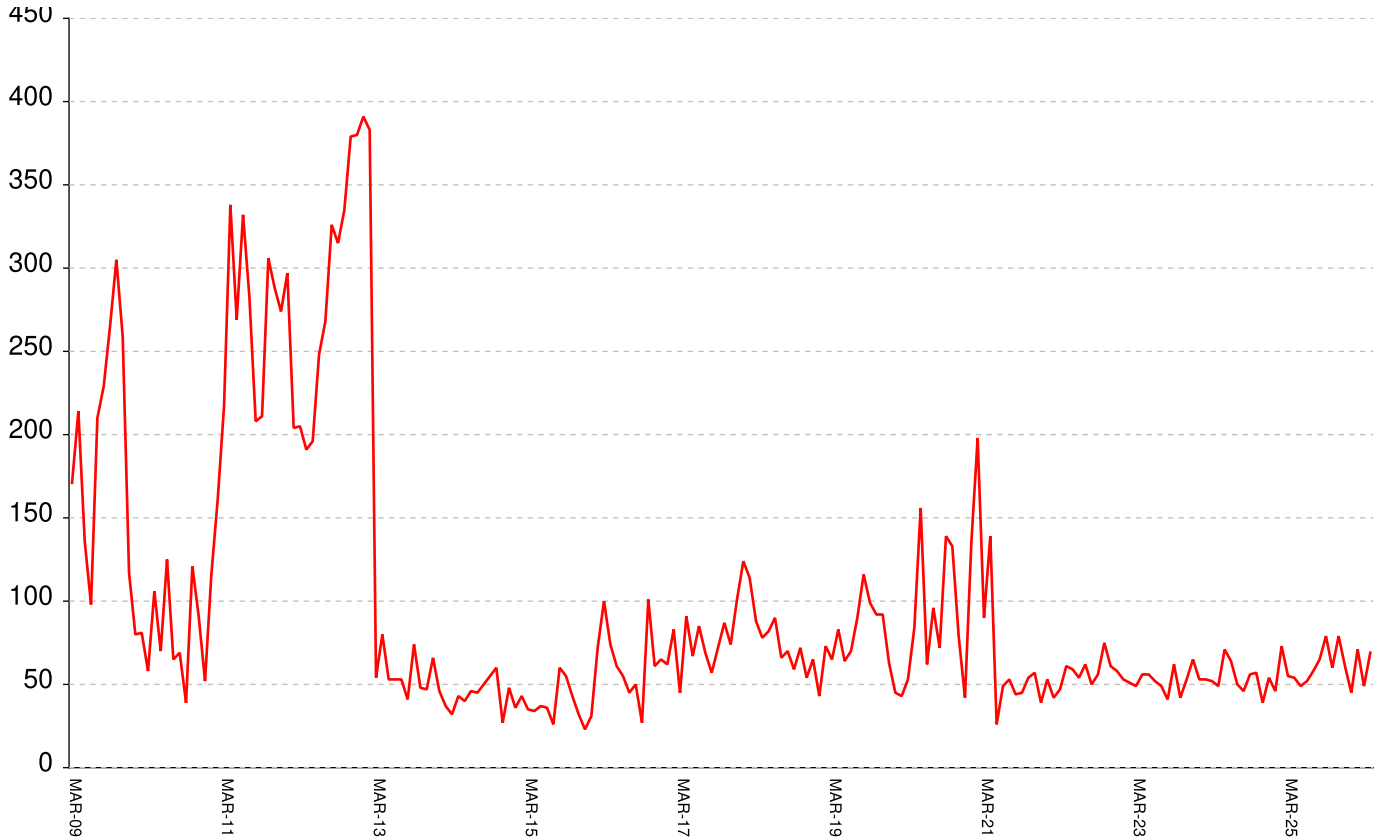
This graph shows, for each Friday since March 2009, the number of prisoners, probationers, and parolees in local jails who have been sentenced or revoked to state prison and whose documents have been received and verified by GDC. Most are almost immediately assigned to a diagnostic center, and are designated as in "admission processing". Of those a few hundred may be in the "transportation delayed" category because there is no room in the assigned diagnostic center, or because the inmate is being held for medical reasons, or for other court proceedings, or other reasons. Those remaining are "ready to be picked up".

<b>Total state inmates waiting in jail</b>	<b>RISES BY 7</b>	<b>from 2389</b>	<b>to 2396</b>
... not yet assigned to a diagnostic center	RISES BY 1	from 10	to 11
... total "in admission processing"	RISES BY 6	from 2379	to 2385
... with "transportation delayed"	<b>RISES BY 6</b>	<b>from 177</b>	<b>to 183</b>
... ready to be picked up	...	... level	<b>at 2202</b>

The highest number of state inmates waiting in jail was 5338 on 27-MAR-09  
 ... highest number not asg to a diagnostic center was 2881 on 12-JUN-09  
 ... highest number in admission processing was 4916 on 25-MAR-11  
 ... highest number with transportation delayed was 645 on 14-JAN-11  
 ... highest number ready to be pickup was 4435 on 25-MAR-11

# Female state inmates in jail awaiting pickup

March 20, 2009 through April 10, 2026



This graph shows, for each Friday since March 2009, the number of female state prisoners in local jails who were assigned to diagnostic centers but had not yet been picked up.

**Female state inmates in jails waiting picked up falls by 12 from 69 to 57**

The highest number of female inmates waiting in jail was 424 on 01-FEB-13

The lowest number of female inmates waiting in jail was 17 on 20-MAR-20

## Summary of housed prisoners, parolees, and probationers

Week Ending	Prison	Parole	Probation			Prison+parole +probation	Jail		Total
	Total inmates	Revocation centers	Prob RSAT	Boot camp	Detention		Inmate backlog	Probationers	Prison+parole +probation+jail
18-Apr-2025	50040		1449		1489	52978	895	14	53887
25-Apr-2025	50035		1454		1486	52975	962	14	53951
02-May-2025	50070		1461		1501	53032	1094	14	54140
09-May-2025	49969		1446		1504	52919	1192	14	54125
16-May-2025	50043		1435		1473	52951	1355	14	54320
23-May-2025	50107		1428		1501	53036	1453	14	54503
30-May-2025	50224		1437		1509	53170	1477	14	54661
06-Jun-2025	50133		1455		1482	53070	1520	14	54604
13-Jun-2025	50139		1440		1487	53066	1524	14	54604
20-Jun-2025	50045		1425		1525	52995	1543	14	54552
27-Jun-2025	50363		1438		1512	53313	1425	14	54752
04-Jul-2025	50404		1450		1516	53370	1394	14	54778
11-Jul-2025	50529		1433		1531	53493	1191	14	54698
18-Jul-2025	50525		1462		1492	53479	1246	14	54739
25-Jul-2025	50570		1485		1514	53569	1318	14	54901
01-Aug-2025	50604		1492		1499	53595	1266	14	54875
08-Aug-2025	50586		1483		1482	53551	1112	14	54677
15-Aug-2025	50624		1487		1483	53594	1113	14	54721
22-Aug-2025	50654		1478		1463	53595	1204	15	54814
29-Aug-2025	50683		1491		1461	53635	1208	15	54858
05-Sep-2025	50623		1491		1458	53572	1164	15	54751
12-Sep-2025	50671		1504		1474	53649	1168	15	54832
19-Sep-2025	50604		1479		1477	53560	1350	15	54925
26-Sep-2025	50642		1490		1446	53578	1456	15	55049
03-Oct-2025	50592		1496		1426	53514	1545	15	55074
10-Oct-2025	50542		1502		1438	53482	1568	15	55065
17-Oct-2025	50565		1526		1461	53552	1619	15	55186
24-Oct-2025	50468		1540		1470	53478	1738	15	55231
31-Oct-2025	50381		1483		1513	53377	1861	15	55253
07-Nov-2025	50231		1503		1493	53227	1898	15	55140
14-Nov-2025	50276		1516		1485	53277	1907	15	55199
21-Nov-2025	50343		1512		1498	53353	1956	15	55324
28-Nov-2025	50271		1495		1515	53281	2047	15	55343
05-Dec-2025	50325		1472		1501	53298	1989	14	55301
12-Dec-2025	50317		1481		1499	53297	2063	13	55373
19-Dec-2025	50326		1503		1474	53303	2078	13	55394
26-Dec-2025	50291		1493		1474	53258	2177	13	55448
02-Jan-2026	50238		1475		1427	53140	2171	13	55324
09-Jan-2026	50250		1479		1429	53158	1965	13	55136
16-Jan-2026	50195		1483		1436	53114	2042	13	55169
23-Jan-2026	50092		1469		1430	52991	2157	13	55161
30-Jan-2026	49980		1465		1364	52809	2182	13	55004
06-Feb-2026	49874		1475		1390	52739	2212	13	54964
13-Feb-2026	49848		1464		1399	52711	2277	13	55001
20-Feb-2026	49860		1455		1374	52689	2304	13	55006
27-Feb-2026	49899		1447		1403	52749	2316	13	55078
06-Mar-2026	49854		1448		1412	52714	2364	13	55091
13-Mar-2026	49912		1458		1410	52780	2360	13	55153
20-Mar-2026	49857		1468		1406	52731	2430	13	55174
27-Mar-2026	49997		1464		1394	52855	2372	13	55240
03-Apr-2026	50055		1464		1396	52915	2389	13	55317
10-Apr-2026	50068		1461		1400	52929	2396	12	55337

## Offenders housed in facilities for state prisoners

Week ending	In facilities other than state prisons							Total Inmates
	In state prisons	Transition centers	County prisons	Pre-rel centers	Private prisons	Inmate boot camps	Total others	
18-Apr-2025	34906	2591	4515		8027	1	15134	50040
25-Apr-2025	34904	2590	4522		8018	1	15131	50035
02-May-2025	34954	2567	4511		8037	1	15116	50070
09-May-2025	34900	2544	4495		8029	1	15069	49969
16-May-2025	34954	2554	4502		8032	1	15089	50043
23-May-2025	35001	2577	4501		8028	0	15106	50107
30-May-2025	35065	2605	4511		8043	0	15159	50224
06-Jun-2025	35068	2587	4440		8038	0	15065	50133
13-Jun-2025	35092	2599	4416		8032	0	15047	50139
20-Jun-2025	35027	2590	4442		7986	0	15018	50045
27-Jun-2025	35203	2645	4483		8032	0	15160	50363
04-Jul-2025	35284	2652	4430		8038	0	15120	50404
11-Jul-2025	35380	2669	4436		8044	0	15149	50529
18-Jul-2025	35399	2690	4400		8036	0	15126	50525
25-Jul-2025	35464	2698	4363		8045	0	15106	50570
01-Aug-2025	35516	2709	4347		8032	0	15088	50604
08-Aug-2025	35507	2698	4347		8034	0	15079	50586
15-Aug-2025	35522	2714	4349		8039	0	15102	50624
22-Aug-2025	35539	2726	4348		8041	0	15115	50654
29-Aug-2025	35576	2714	4352		8041	0	15107	50683
05-Sep-2025	35478	2721	4352		8072	0	15145	50623
12-Sep-2025	35437	2739	4396		8099	0	15234	50671
19-Sep-2025	35399	2749	4378		8078	0	15205	50604
26-Sep-2025	35420	2732	4384		8106	0	15222	50642
03-Oct-2025	35389	2727	4371		8105	0	15203	50592
10-Oct-2025	35390	2705	4350		8097	0	15152	50542
17-Oct-2025	35402	2716	4337		8110	0	15163	50565
24-Oct-2025	35359	2744	4297		8068	0	15109	50468
31-Oct-2025	35328	2751	4237		8065	0	15053	50381
07-Nov-2025	35288	2748	4167		8028	0	14943	50231
14-Nov-2025	35293	2750	4193		8040	0	14983	50276
21-Nov-2025	35342	2756	4211		8034	0	15001	50343
28-Nov-2025	35305	2745	4168		8053	0	14966	50271
05-Dec-2025	35396	2746	4134		8049	0	14929	50325
12-Dec-2025	35370	2759	4130		8058	0	14947	50317
19-Dec-2025	35414	2755	4107		8049	1	14912	50326
26-Dec-2025	35409	2737	4082		8062	1	14882	50291
02-Jan-2026	35371	2745	4056		8065	1	14867	50238
09-Jan-2026	35363	2780	4032		8074	1	14887	50250
16-Jan-2026	35354	2745	3988		8107	1	14841	50195
23-Jan-2026	35302	2731	3960		8098	1	14790	50092
30-Jan-2026	35249	2730	3926		8074	1	14731	49980
06-Feb-2026	35179	2729	3891		8074	1	14695	49874
13-Feb-2026	35121	2721	3906		8099	1	14727	49848
20-Feb-2026	35112	2747	3898		8102	1	14748	49860
27-Feb-2026	35132	2750	3907		8109	1	14767	49899
06-Mar-2026	35106	2739	3932		8076	1	14748	49854
13-Mar-2026	35010	2751	4084		8066	1	14902	49912
20-Mar-2026	34880	2758	4146		8072	1	14977	49857
27-Mar-2026	34907	2761	4212		8116	1	15090	49997
03-Apr-2026	34940	2757	4236		8122	0	15115	50055
10-Apr-2026	34946	2755	4263		8104	0	15122	50068

## Offenders waiting in local jails for state facilities

Week ending	Probationers waiting in jail				Probationers waiting in jail					Assigned females
	.. for PDCs	.. for RSAT	.. for boot camps	Total	Total backlog	Not yet assigned	In adm process	Delayed transport	Ready for pickup	
18-Apr-2025	11	2	1	14	895	10	885	168	717	50
25-Apr-2025	11	2	1	14	962	9	953	162	791	54
02-May-2025	11	2	1	14	1094	9	1085	168	917	49
09-May-2025	11	2	1	14	1192	9	1183	171	1012	58
16-May-2025	11	2	1	14	1355	8	1347	178	1169	62
23-May-2025	11	2	1	14	1453	8	1445	181	1264	69
30-May-2025	11	2	1	14	1477	9	1468	184	1284	58
06-Jun-2025	11	2	1	14	1520	8	1512	176	1336	65
13-Jun-2025	11	2	1	14	1524	8	1516	172	1344	52
20-Jun-2025	11	2	1	14	1543	9	1534	179	1355	46
27-Jun-2025	11	2	1	14	1425	9	1416	179	1237	35
04-Jul-2025	11	2	1	14	1394	9	1385	202	1183	53
11-Jul-2025	11	2	1	14	1191	9	1182	201	981	50
18-Jul-2025	11	2	1	14	1246	9	1237	198	1039	58
25-Jul-2025	11	2	1	14	1318	9	1309	203	1106	70
01-Aug-2025	11	2	1	14	1266	9	1257	192	1065	59
08-Aug-2025	11	2	1	14	1112	11	1101	177	924	40
15-Aug-2025	11	2	1	14	1113	10	1103	174	929	51
22-Aug-2025	12	2	1	15	1204	10	1194	171	1023	60
29-Aug-2025	12	2	1	15	1208	8	1200	175	1025	65
05-Sep-2025	12	2	1	15	1164	8	1156	177	979	63
12-Sep-2025	12	2	1	15	1168	8	1160	178	982	68
19-Sep-2025	12	2	1	15	1350	8	1342	176	1166	61
26-Sep-2025	12	2	1	15	1456	9	1447	169	1278	79
03-Oct-2025	12	2	1	15	1545	8	1537	169	1368	75
10-Oct-2025	12	2	1	15	1568	8	1560	171	1389	66
17-Oct-2025	12	2	1	15	1619	9	1610	171	1439	73
24-Oct-2025	12	2	1	15	1738	8	1730	172	1558	60
31-Oct-2025	12	2	1	15	1861	10	1851	167	1684	53
07-Nov-2025	12	2	1	15	1898	11	1887	168	1719	58
14-Nov-2025	12	2	1	15	1907	12	1895	169	1726	67
21-Nov-2025	12	2	1	15	1956	11	1945	175	1770	86
28-Nov-2025	12	2	1	15	2047	11	2036	168	1868	79
05-Dec-2025	11	2	1	14	1989	10	1979	171	1808	72
12-Dec-2025	10	2	1	13	2063	11	2052	172	1880	79
19-Dec-2025	10	2	1	13	2078	11	2067	172	1895	53
26-Dec-2025	10	2	1	13	2177	11	2166	175	1991	61
02-Jan-2026	10	2	1	13	2171	11	2160	172	1988	45
09-Jan-2026	10	2	1	13	1965	10	1955	175	1780	34
16-Jan-2026	10	2	1	13	2042	9	2033	175	1858	59
23-Jan-2026	10	2	1	13	2157	9	2148	170	1978	69
30-Jan-2026	10	2	1	13	2182	9	2173	168	2005	52
06-Feb-2026	10	2	1	13	2212	9	2203	164	2039	61
13-Feb-2026	10	2	1	13	2277	9	2268	164	2104	71
20-Feb-2026	10	2	1	13	2304	9	2295	167	2128	64
27-Feb-2026	10	2	1	13	2316	9	2307	168	2139	47
06-Mar-2026	10	2	1	13	2364	9	2355	172	2183	66
13-Mar-2026	10	2	1	13	2360	10	2350	174	2176	76
20-Mar-2026	10	2	1	13	2430	10	2420	173	2247	49
27-Mar-2026	10	2	1	13	2372	10	2362	172	2190	62
03-Apr-2026	10	2	1	13	2389	10	2379	177	2202	69
10-Apr-2026	9	2	1	12	2396	11	2385	183	2202	57