

# Friday Report - overview and contents

The pages in The Friday Report are about adult offenders in Georgia's prisons and jails. They contain statistical snapshots and trends in the populations and movements of offenders in the state prison system, on probation, on parole, and in local jails. Information comes from databases of the Georgia Department of Corrections (GDC) and the Board of Pardons and Paroles, and from data provided by local jailers. Information is summarized into tables in the GDC/Parole Data Warehouse, and is extracted into these pages each Friday. Pages are organized according to the table that supplied the data.

<b>The Monthly Research Table</b> , named "MO_RESRCH" or simply "MO", contains data about state prisoners, grouped into statistically interesting categories. The table contains one record per month, from January 2000 to the present. Despite its being "monthly", it is updated weekly, because some data trickles in for several weeks before it becomes stable history.	
Page	Content
MO-01	Clemencies and maxouts. Monthly graph from 2000 to present shows the monthly departures from prison via actions by the Georgia Parole Board (clemencies), and via service of 100% of the court ordered sentence (maxouts)
MO-02	48 months of releases. Table shows counts and percentages of releases via clemencies and maxouts, with and without probation to follow, for each of the past 48 months.
MO-03	Methamphetamine. Monthly graph from 2000 to present shows admissions, departures, population, and percent of population of inmates with a current offense of methamphetamine possession, sale, manufacturing, or trafficking, and the changing racial composition of the methamphetamine population
MO-04	Non-violent first incarcerants. Monthly graph from 2000 to present shows admissions, departures, population, and percent of population of inmates without violent or sex crimes, who are serving their first Georgia felony incarceration.
MO-05	Seven Deadly Sins. Monthly graph from 2000 to present shows admissions, departures, population, and percent of population of inmates convicted of kidnapping, armed robbery, rape, aggravated sodomy, aggravated sexual battery, and aggravated child molestation, for whom especially severe penalties are prescribed.
MO-06	48 months of inmate subpopulations. Table shows number and percentage of white and non-white inmates with methamphetamine offenses, and non-violent first incarcerants, and inmates convicted of the Seven Deadly Sins.
MO-07	Inmate age overview. Line graph shows the average age of the inmate population, by month from 2000 to the present. Pie chart shows the number of currently active inmates in their teens, twenties, thirties, forties, fifties, and age sixty+.
MO-08	Counts by age group. Graphs show the count, by month from 2000 to the present, of inmates in their teens, twenties, thirties, forties, fifties, and age sixty+.
MO-09	Percentages by age group. Graphs show the percentages, by month from 2000 to the present, of inmates in their teens, twenties, thirties, forties, fifties, and age sixty+.
MO-10	48 months of inmate ages. Table shows average age of the standing population, and counts and percentages of teens, twenties, thirties, forties, fifties, and sixty+, for each of the past 48 months.

# Friday Report - overview and contents (continued)

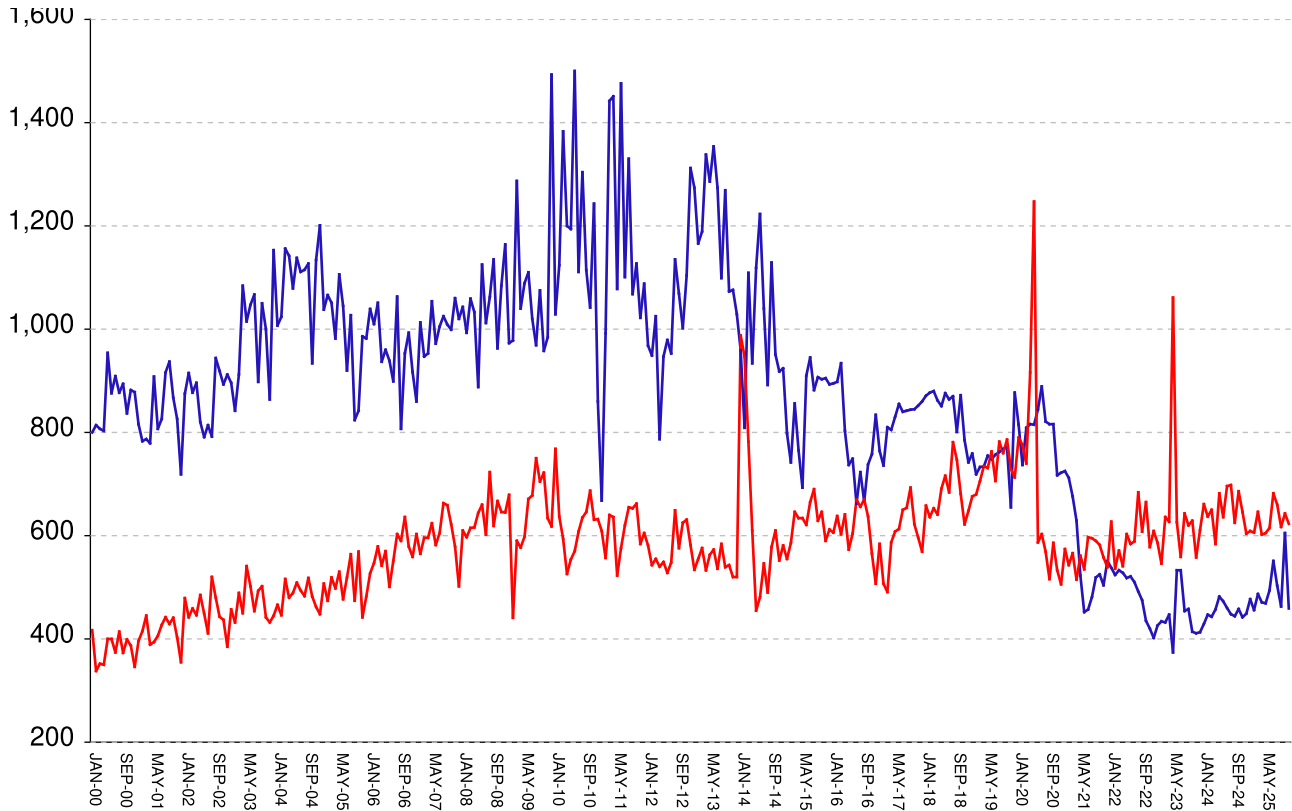
**The MSR Table** is based on the Management Summary Report (MSR), a snapshot report posted each week in GDC's Scribe database. MSR\_RESRCH gathers that data into weekly trends, with one record for each Friday since March 20th, 2009

Page	Content
<b>MSR-01</b>	All housed offenders. Weekly graph from March 20, 2009 to present, showing counts of inmates in state prisons, transitional centers, county prisons, private prisons, inmate boot camps, parole revocation centers, probation Residential Substance Abuse Treatment (RSAT), probation boot camps, probation detention centers, plus the inmate jail backlog and probationers in jail waiting for state facilities.
<b>MSR-02</b>	Probationers in jail. Weekly graph from March 20, 2009 to present, showing counts of probationers in local jails awaiting placement in probation detention centers, probation RSAT centers, and probation boot camps.
<b>MSR-03</b>	State inmates in jail. Weekly graph from March 20, 2009 to present, showing counts of state inmates in local jails awaiting placement in state prison facilities – including those who have not yet been assigned to a diagnostic center, those whose transportation has been delayed for some reason, and those who are ready to be picked up.
<b>MSR-04</b>	Female state inmates in jail. Weekly graph from March 20, 2009 to present, showing counts of female state inmates awaiting placement in a state prison for females.
<b>MSR-05</b>	52-week table: housed offenders. Data for each of the past 52 weeks, showing total prison inmates, parolees in revocation centers, probationers in RSAT/boot camp/detention centers, inmate jail backlog, probationers in jail waiting for facilities, with subtotals.
<b>MSR-06</b>	52-week table: state prisoners. Data for each of the past 52 weeks, showing inmates in state prisons, transition centers, county prisons, pre-release centers, private prisons, and inmate boot camps, with subtotals.
<b>MSR-07</b>	52-week table: waiting in jail. Data for each of the past 52 weeks, showing probationers waiting for detention centers, RSAT, and boot camp; and state prisoners not yet assigned to diagnostic centers, in admission process, with delayed transport, and ready for pickup, with subtotals.

## Releases by clemency and maxout, Jan-2000 to Nov-2025

There are two main ways of being released from a Georgia prison -- by actions of the Board of Pardons and Paroles ("Clemencies") and by service of 100% of the court-ordered sentences ("Maxouts").

"Clemency" includes paroles, reprieves, commutations, and transfer to other confinement prior to expiration of sentence. "Other Releases" includes deaths, and sentences modified or overturned by the courts. Clemencies and maxouts may or may not be followed by periods of probation.



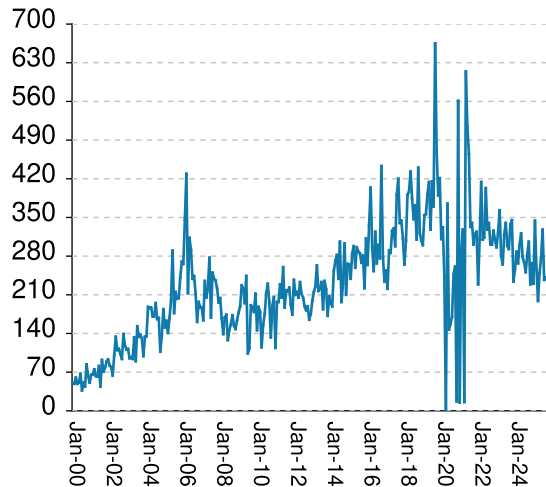
A. Clemency with probation to follow	falls by	114	from	519	to	405
B. Clemency only	falls by	32	from	86	to	54
C. Maxout with probation to follow	falls by	9	from	589	to	580
D. Maxout only (unsupervised)	falls by	11	from	54	to	43
E. Other releases	falls by	4	from	26	to	22
F. Total releases (A+B+C+D+E)	falls by	170	from	1274	to	1104
<b>G. Total clemencies (A+B) (top line)</b>	<b>falls by</b>	<b>146</b>	<b>from</b>	<b>605</b>	<b>to</b>	<b>459</b>
<b>H. Total maxouts (C+D) (bottom line)</b>	<b>falls by</b>	<b>20</b>	<b>from</b>	<b>643</b>	<b>to</b>	<b>623</b>
I. % of releases by clemency (G/F)	falls by	5.91%	from	47.49%	to	41.58%
J. % of releases by maxout (H/F)	RISES BY	5.96%	from	50.47%	to	56.43%
K. Supervised releases (A+B+C)	falls by	155	from	1194	to	1039
L. % unsupervised releases (D/F)	falls by	.35%	from	4.24%	to	3.89%
M. % supervised releases (K/F)	RISES BY	.39%	from	93.72%	to	94.11%

Monthly releases from prison by type of release, for the past 48 months										
	A	B	C	D	E	F	G	H	I	J
Month	Clemency + Prob	Clemency Only	Maxout + Prob	Maxout Only	Other rels	Total Releases (A+B+C+D+E)	Total Clemency (A+B)	Total Maxout (C+D)	Percent Clemency (G/F)	Percent Maxout (H/F)
Dec-21	469	82	483	56	18	1108	551	539	49.73%	48.65%
Jan-22	458	80	550	77	26	1191	538	627	45.17%	52.64%
Feb-22	444	80	466	70	24	1084	524	536	48.34%	49.45%
Mar-22	460	73	515	56	16	1120	533	571	47.59%	50.98%
Apr-22	455	73	470	71	16	1085	528	541	48.66%	49.86%
May-22	439	79	539	64	26	1147	518	603	45.16%	52.57%
Jun-22	456	65	528	56	21	1126	521	584	46.27%	51.87%
Jul-22	440	70	530	59	14	1113	510	589	45.82%	52.92%
Aug-22	424	68	619	65	21	1197	492	684	41.10%	57.14%
Sep-22	398	77	549	59	18	1101	475	608	43.14%	55.22%
Oct-22	373	62	603	62	23	1123	435	665	38.74%	59.22%
Nov-22	366	54	523	55	19	1017	420	578	41.30%	56.83%
Dec-22	342	60	550	59	28	1039	402	609	38.69%	58.61%
Jan-23	375	51	527	59	23	1035	426	586	41.16%	56.62%
Feb-23	387	47	493	53	17	997	434	546	43.53%	54.76%
Mar-23	377	55	573	63	24	1092	432	636	39.56%	58.24%
Apr-23	390	57	574	53	26	1100	447	627	40.64%	57.00%
May-23	327	47	930	131	20	1455	374	1061	25.70%	72.92%
Jun-23	461	72	567	59	19	1178	533	626	45.25%	53.14%
Jul-23	459	74	511	48	25	1117	533	559	47.72%	50.04%
Aug-23	402	52	589	54	22	1119	454	643	40.57%	57.46%
Sep-23	402	56	577	43	10	1088	458	620	42.10%	56.99%
Oct-23	363	51	578	51	31	1074	414	629	38.55%	58.57%
Nov-23	354	57	491	67	19	988	411	558	41.60%	56.48%
Dec-23	366	47	554	57	21	1045	413	611	39.52%	58.47%
Jan-24	367	62	599	62	32	1122	429	661	38.24%	58.91%
Feb-24	396	51	578	59	24	1108	447	637	40.34%	57.49%
Mar-24	380	63	587	63	20	1113	443	650	39.80%	58.40%
Apr-24	411	46	532	52	33	1074	457	584	42.55%	54.38%
May-24	426	56	609	73	26	1190	482	682	40.50%	57.31%
Jun-24	411	62	576	60	23	1132	473	636	41.78%	56.18%
Jul-24	398	62	630	66	38	1194	460	696	38.53%	58.29%
Aug-24	381	67	639	59	19	1165	448	698	38.45%	59.91%
Sep-24	379	65	561	64	34	1103	444	625	40.25%	56.66%
Oct-24	401	57	632	54	28	1172	458	686	39.08%	58.53%
Nov-24	387	55	592	54	23	1111	442	646	39.78%	58.15%
Dec-24	391	58	556	48	33	1086	449	604	41.34%	55.62%
Jan-25	419	58	561	48	30	1116	477	609	42.74%	54.57%
Feb-25	398	58	547	59	17	1079	456	606	42.26%	56.16%
Mar-25	431	56	596	50	23	1156	487	646	42.13%	55.88%
Apr-25	408	63	555	47	18	1091	471	602	43.17%	55.18%
May-25	424	45	551	54	26	1100	469	605	42.64%	55.00%
Jun-25	434	60	577	38	36	1145	494	615	43.14%	53.71%
Jul-25	491	60	618	64	33	1266	551	682	43.52%	53.87%
Aug-25	430	73	601	59	16	1179	503	660	42.66%	55.98%
Sep-25	406	57	573	44	26	1106	463	617	41.86%	55.79%
Oct-25	519	86	589	54	26	1274	605	643	47.49%	50.47%
Nov-25	405	54	580	43	22	1104	459	623	41.58%	56.43%

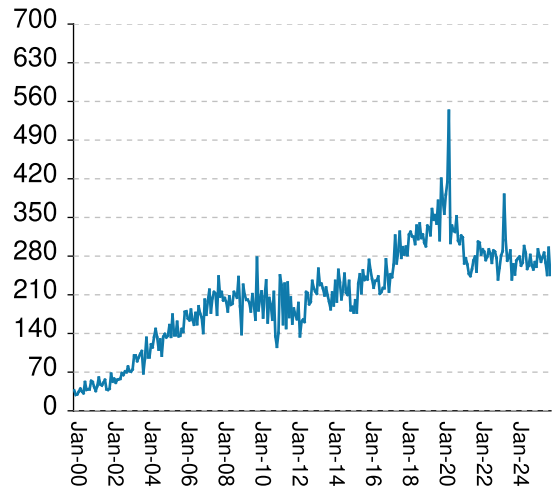
# Inmates with meth crimes, by month, Jan-2000 to Nov-2025

Methamphetamine is one of the most addictive drugs ever known. At first it induces intense euphoria, but with continued use causes severe depression and physical deterioration, including the dental catastrophe known as "meth mouth". Georgia's meth epidemic began in the early 2000s and has seen continued growth over the last 2 decades, with continued expansion beyond the originally predominate use by northern county white males.

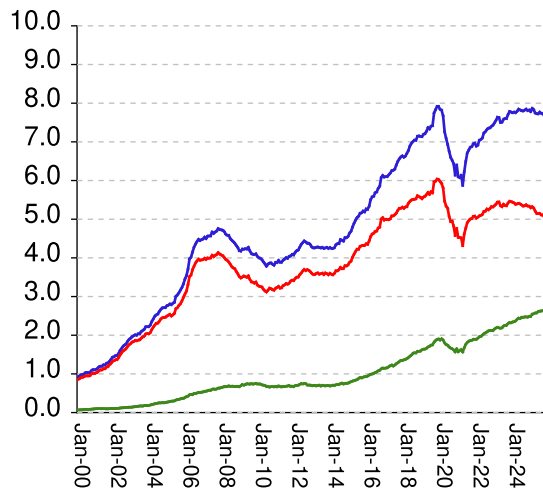
## Admissions



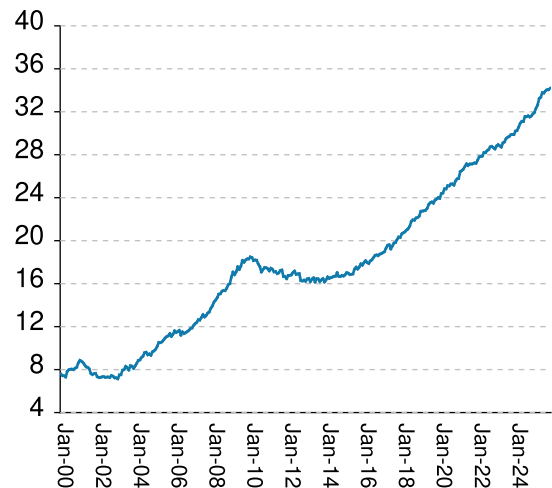
## Releases



## Population x1000



## Percent Non-White

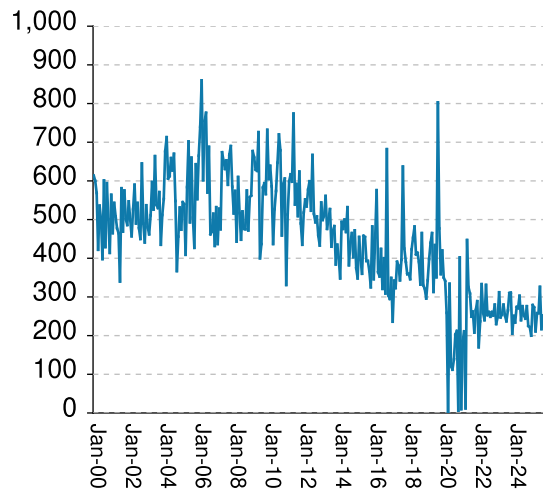


Methamphetamine admissions	falls by	23	from	237	to	214
Methamphetamine releases	falls by	49	from	295	to	246
<b>Methamphetamine population</b>	<b>falls by</b>	<b>32</b>	<b>from</b>	<b>7675</b>	<b>to</b>	<b>7643</b>
<b>Meth white population</b>	<b>falls by</b>	<b>29</b>	<b>from</b>	<b>5061</b>	<b>to</b>	<b>5032</b>
<b>Meth non-white population</b>	<b>...</b>	<b>...%</b>	<b>...</b>	<b>2614</b>	<b>at</b>	<b>2614</b>
Percent meth inmates who are non-white	RISES BY	.14%	from	34.06%	to	34.2%

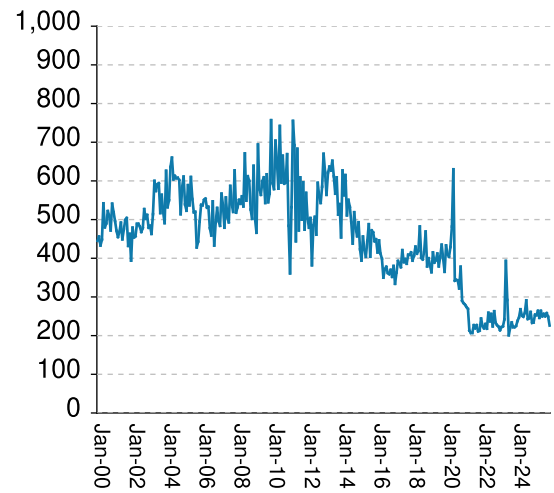
## Non-violent first-incarcerants, by month, Jan-2000 to Nov-2025

Historically, about one in six Georgia prison inmates has been a first-time incarcerant with a non-violent crime. In 2012 Georgia passed HB1176, which aimed to curb the growth of prison population by steering the least dangerous, least hardened offenders away from prison through pre-trial intervention, diversion, drug courts and treatment programs, and raising the dollar thresholds that define property felonies. The expectation is that over time, these measures will reduce the percentage of first-time non-violent incarcerants in prison.

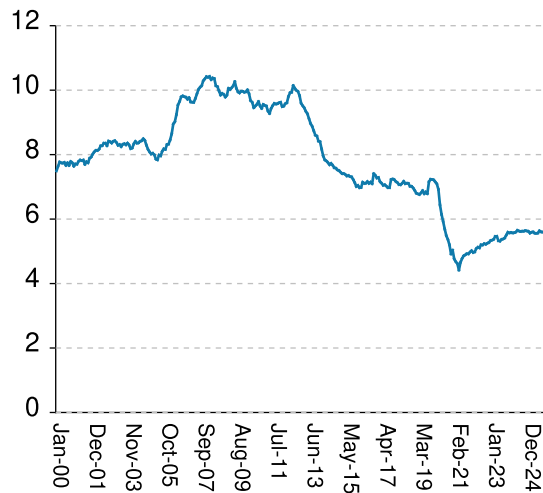
### Admissions



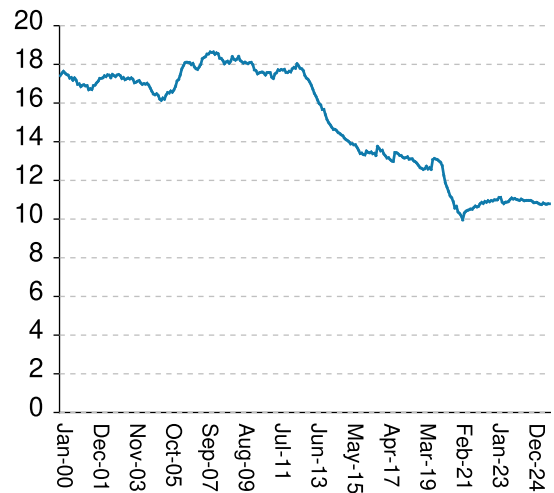
### Releases



### Population x1000



### % Total Population

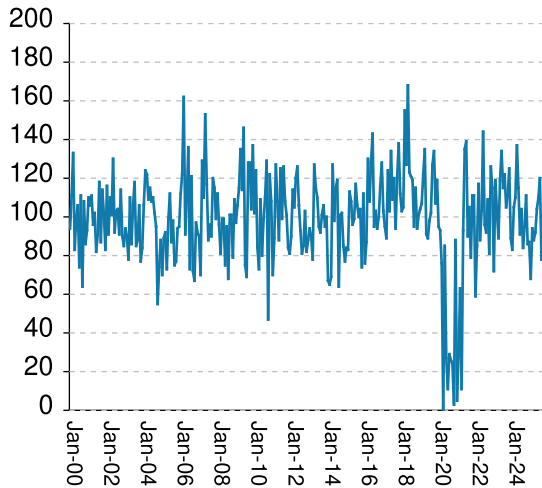


Non-viol/1st-Incar admissions	falls by	26	from	237	to	211
Non-viol/1st-Incar releases	falls by	23	from	249	to	226
Non-viol/1st-Incar population	falls by	15	from	5586	to	5571
Non-viol/1st-Incar % of total population	...	...	...	10.79%	at	10.79%

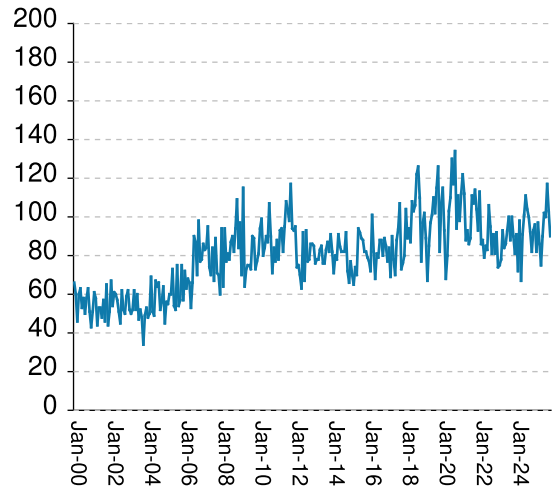
## 'Seven Deadly Sin', by month, Jan-2000 to Nov-2025

Tough legislation in 1995 imposed mandatory ten-year minimum terms for kidnapping, armed robbery, rape, aggravated sodomy, aggravated sexual battery, and aggravated child molestation, and a minimum of 25 years for murder. A second conviction resulted in life without parole. As predicted, longer prison terms caused population to climb steeply for about a decade. It then began to level off, as releases started catching up with admissions. The 2008 dip in percentage of total population (bottom right) was caused by the surge of methamphetamine convictions (Page MO-03). Note: these graphs include inmates convicted before 1995.

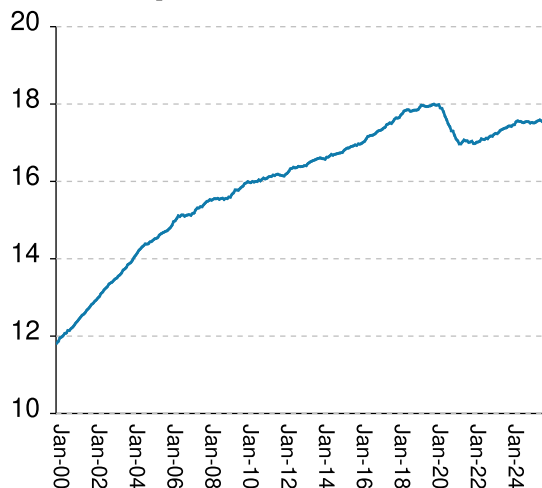
### Admissions



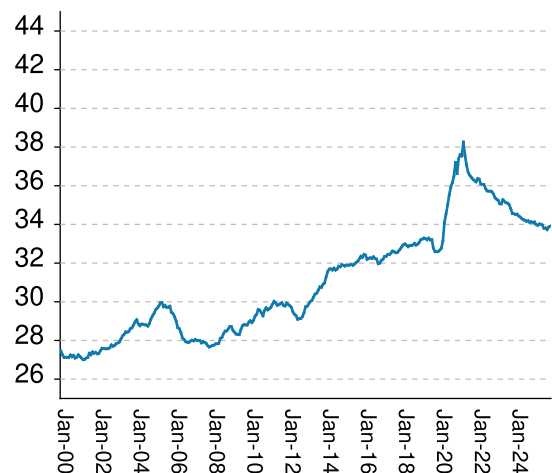
### Releases



### Population x1000



### % Total Population



"Seven Deadly Sin" admissions	falls by	11	from	92	to	81
"Seven Deadly Sin" releases	falls by	13	from	103	to	90
"Seven Deadly Sin" population	falls by	9	from	17525	to	17516
"Seven Deadly Sin" % of total population	RISES BY	.05%	from	33.86%	to	33.91%

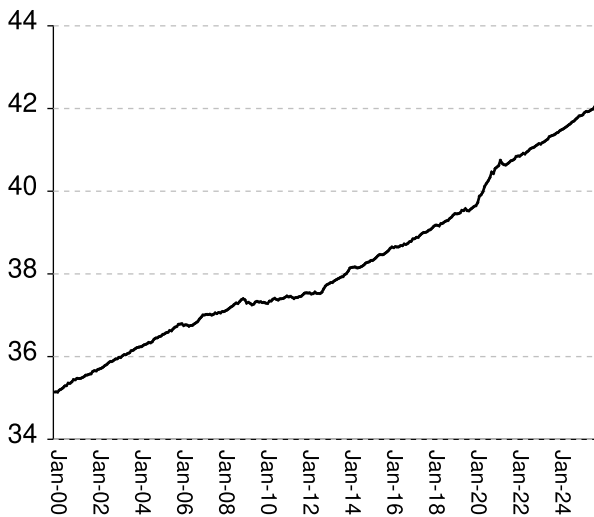
Inmate subpopulation counts and percentages, for the past 48 months										
Month	Methamphetamine						1st Incar Non-Violent		Seven Deadly Sins	
	Total Number	Total Percent	White Number	White Percent	Non White Number	Non White Percent	Number	Percent	Number	Percent
Dec-21	6965	14.80%	5077	72.89%	1895	27.21%	5019	10.67%	17037	36.20%
Jan-22	6890	14.75%	5030	73.00%	1895	27.50%	4964	10.63%	16983	36.37%
Feb-22	6918	14.80%	5052	73.03%	1923	27.80%	4982	10.66%	16982	36.34%
Mar-22	7040	14.94%	5087	72.26%	1960	27.84%	5085	10.79%	17011	36.10%
Apr-22	7062	14.96%	5100	72.22%	1969	27.88%	5126	10.86%	17020	36.07%
May-22	7103	15.03%	5124	72.14%	2003	28.20%	5107	10.81%	17038	36.06%
Jun-22	7227	15.16%	5198	71.92%	2038	28.20%	5201	10.91%	17099	35.86%
Jul-22	7263	15.19%	5209	71.72%	2061	28.38%	5198	10.87%	17089	35.74%
Aug-22	7318	15.30%	5263	71.92%	2085	28.49%	5235	10.95%	17086	35.72%
Sep-22	7351	15.34%	5245	71.35%	2112	28.73%	5221	10.90%	17114	35.72%
Oct-22	7362	15.36%	5275	71.65%	2118	28.77%	5249	10.95%	17104	35.69%
Nov-22	7400	15.35%	5322	71.92%	2121	28.66%	5274	10.94%	17149	35.57%
Dec-22	7432	15.32%	5317	71.54%	2121	28.54%	5331	10.99%	17172	35.39%
Jan-23	7490	15.40%	5352	71.46%	2158	28.81%	5347	10.99%	17170	35.30%
Feb-23	7554	15.47%	5388	71.33%	2186	28.94%	5373	11.00%	17214	35.25%
Mar-23	7636	15.53%	5440	71.24%	2202	28.84%	5461	11.11%	17238	35.07%
Apr-23	7628	15.52%	5444	71.37%	2190	28.71%	5466	11.12%	17234	35.06%
May-23	7502	15.32%	5351	71.33%	2182	29.09%	5328	10.88%	17269	35.28%
Jun-23	7512	15.26%	5325	70.89%	2193	29.19%	5316	10.80%	17317	35.19%
Jul-23	7580	15.35%	5386	71.06%	2235	29.49%	5367	10.87%	17339	35.12%
Aug-23	7602	15.37%	5355	70.44%	2252	29.62%	5383	10.88%	17361	35.10%
Sep-23	7605	15.33%	5350	70.35%	2259	29.70%	5414	10.91%	17378	35.02%
Oct-23	7704	15.42%	5418	70.33%	2300	29.85%	5502	11.01%	17389	34.81%
Nov-23	7784	15.44%	5462	70.17%	2326	29.88%	5591	11.09%	17424	34.56%
Dec-23	7771	15.40%	5453	70.17%	2322	29.88%	5571	11.04%	17432	34.55%
Jan-24	7755	15.36%	5440	70.15%	2342	30.20%	5584	11.06%	17424	34.52%
Feb-24	7767	15.36%	5420	69.78%	2350	30.26%	5571	11.02%	17457	34.53%
Mar-24	7755	15.29%	5387	69.46%	2371	30.57%	5577	10.99%	17469	34.44%
Apr-24	7792	15.27%	5396	69.25%	2410	30.93%	5596	10.97%	17539	34.38%
May-24	7845	15.32%	5408	68.94%	2440	31.10%	5650	11.03%	17563	34.30%
Jun-24	7825	15.27%	5395	68.95%	2433	31.09%	5631	10.99%	17553	34.25%
Jul-24	7807	15.22%	5370	68.78%	2463	31.55%	5616	10.95%	17546	34.21%
Aug-24	7801	15.21%	5342	68.48%	2461	31.55%	5625	10.96%	17526	34.16%
Sep-24	7821	15.26%	5349	68.39%	2473	31.62%	5624	10.97%	17521	34.19%
Oct-24	7845	15.25%	5372	68.48%	2473	31.52%	5639	10.96%	17540	34.10%
Nov-24	7811	15.20%	5342	68.39%	2469	31.61%	5631	10.96%	17544	34.14%
Dec-24	7822	15.21%	5335	68.21%	2487	31.79%	5619	10.92%	17538	34.10%
Jan-25	7783	15.17%	5297	68.06%	2486	31.94%	5565	10.85%	17510	34.13%
Feb-25	7866	15.26%	5324	67.68%	2542	32.32%	5591	10.85%	17522	34.00%
Mar-25	7830	15.18%	5286	67.51%	2555	32.63%	5600	10.86%	17513	33.95%
Apr-25	7749	15.05%	5210	67.23%	2574	33.22%	5565	10.81%	17519	34.02%
May-25	7728	14.98%	5150	66.64%	2578	33.36%	5559	10.77%	17548	34.01%
Jun-25	7727	14.94%	5145	66.58%	2610	33.78%	5567	10.76%	17568	33.97%
Jul-25	7769	14.93%	5147	66.25%	2622	33.75%	5637	10.83%	17586	33.80%
Aug-25	7738	14.90%	5112	66.06%	2626	33.94%	5604	10.79%	17564	33.81%
Sep-25	7733	14.87%	5110	66.08%	2633	34.05%	5598	10.77%	17536	33.73%
Oct-25	7675	14.83%	5061	65.94%	2614	34.06%	5586	10.79%	17525	33.86%
Nov-25	7643	14.80%	5032	65.84%	2614	34.20%	5571	10.79%	17516	33.91%



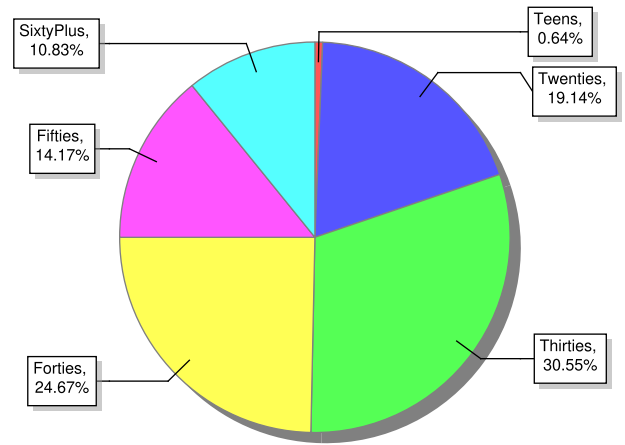
## Overview of inmate age statistics, Jan-2000 to Nov-2025

The "aging inmate population" is a concern in correctional systems throughout America, including Georgia. Here, the increase in inmate age is the result of several factors. Teenagers have been steered away from prison by increased usage of probation and other alternatives, at least for their first convictions. And there has been a surge of middle-aged male sex offenders due to the expanding "It's OK to tell" ethos. But most importantly, more severe sentence lengths and release policies have greatly increased the length of time that most offenders -- especially violent ones -- spend in prison, thereby increasing their average age.

### Average age since 2000



### Current Age



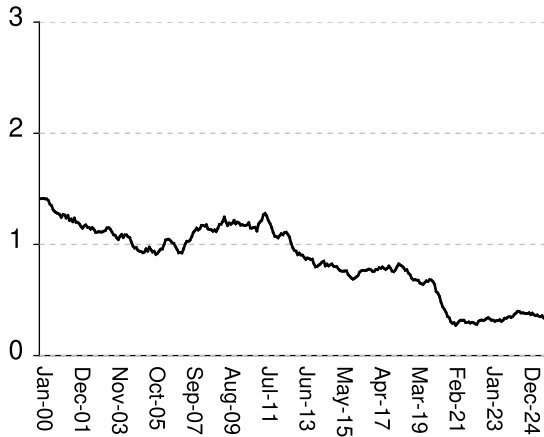
Nov-2025

Average age of active inmates	RISES BY	.06	from	42.05	to	42.11
Number in their teens	falls by	10	from	339	to	329
Percentage in their teens	falls by	.02%	from	.66%	to	.64%
Number in their twenties	falls by	77	from	9,967	to	9,890
Percentage in their twenties	falls by	.11%	from	19.26%	to	19.15%
Number in their thirties	falls by	54	from	15,837	to	15,783
Percentage in their thirties	falls by	.04%	from	30.6%	to	30.56%
Number in their forties	RISES BY	25	from	12,720	to	12,745
Percentage in their forties	RISES BY	.1%	from	24.58%	to	24.68%
Number in their fifties	falls by	6	from	7,327	to	7,321
Percentage in their fifties	RISES BY	.01%	from	14.16%	to	14.17%
Number age sixty and up	RISES BY	35	from	5,561	to	5,596
Percentage age sixty and up	RISES BY	.08%	from	10.75%	to	10.83%

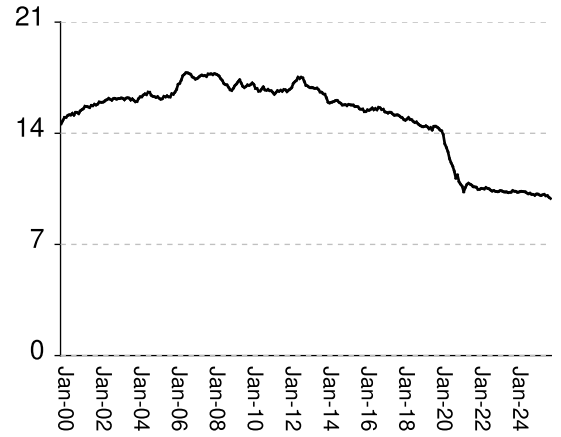
# Monthly counts of inmates by age group, Jan-2000 to Nov-2025

Y-axis of Twenties/Thirties/Forties/Fifties runs from 0 to 21,000. Y-axis of Teens/Sixty+ runs from 0 to 3,000.

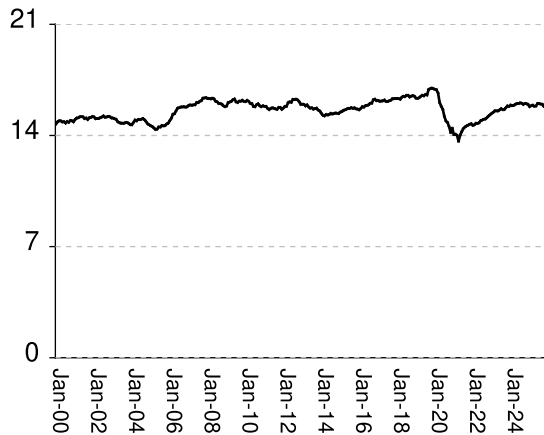
## Teens x 1000



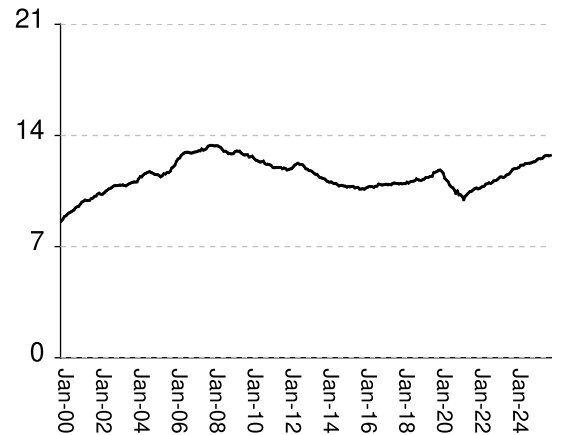
## Twenties x 1000



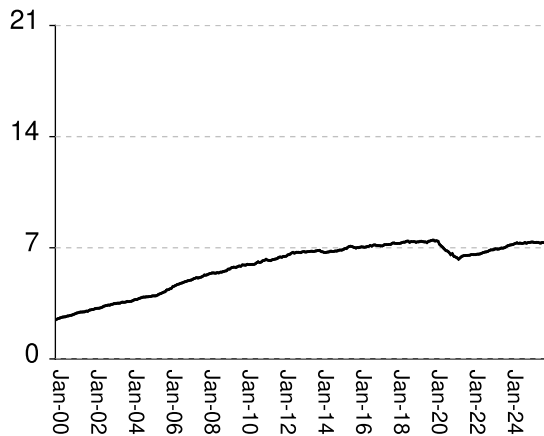
## Thirties x 1000



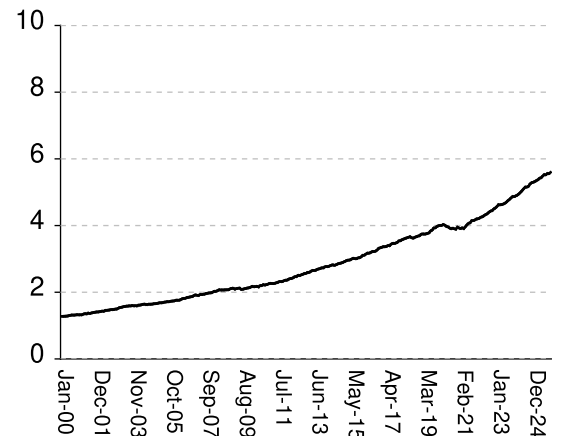
## Forties x 1000



## Fifties x 1000



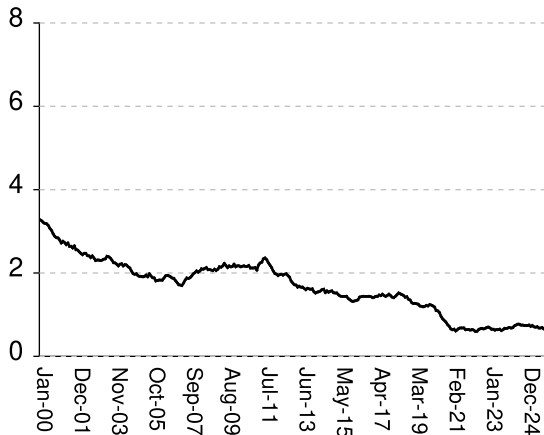
## Sixty & Up x 1000



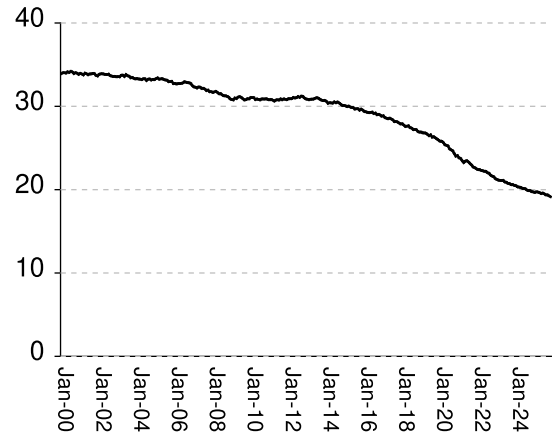
# Monthly percentages of inmates by age group, Jan-2000 to Nov-2025

Y-axis of Twenties/Thirties/Forties/Fifties runs from 0% to 40%. Y-axis of Teens/Sixty+ runs from 0% to 8%

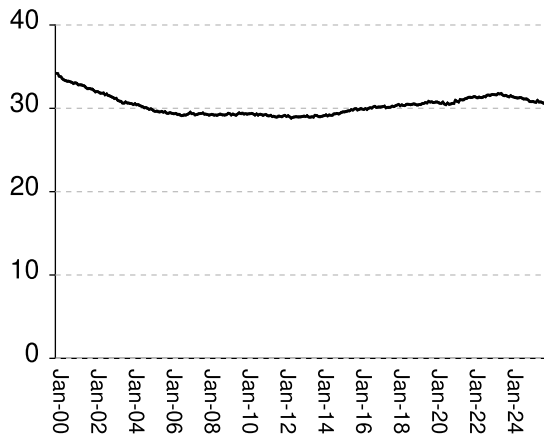
## Teens (%)



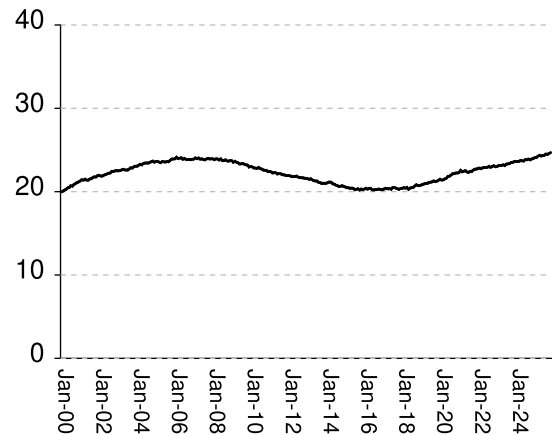
## Twenties (%)



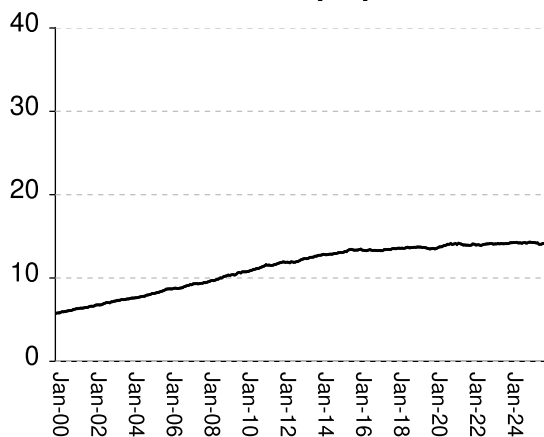
## Thirties (%)



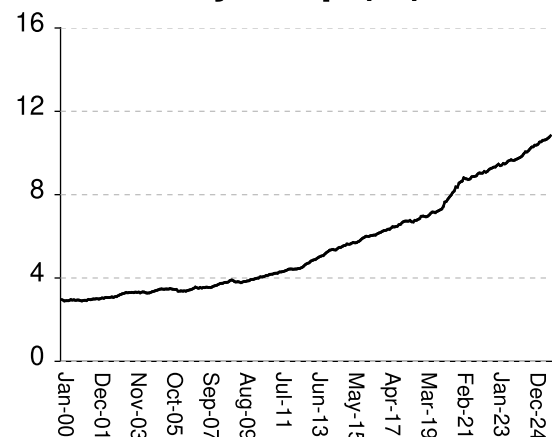
## Forties (%)



## Fifties (%)



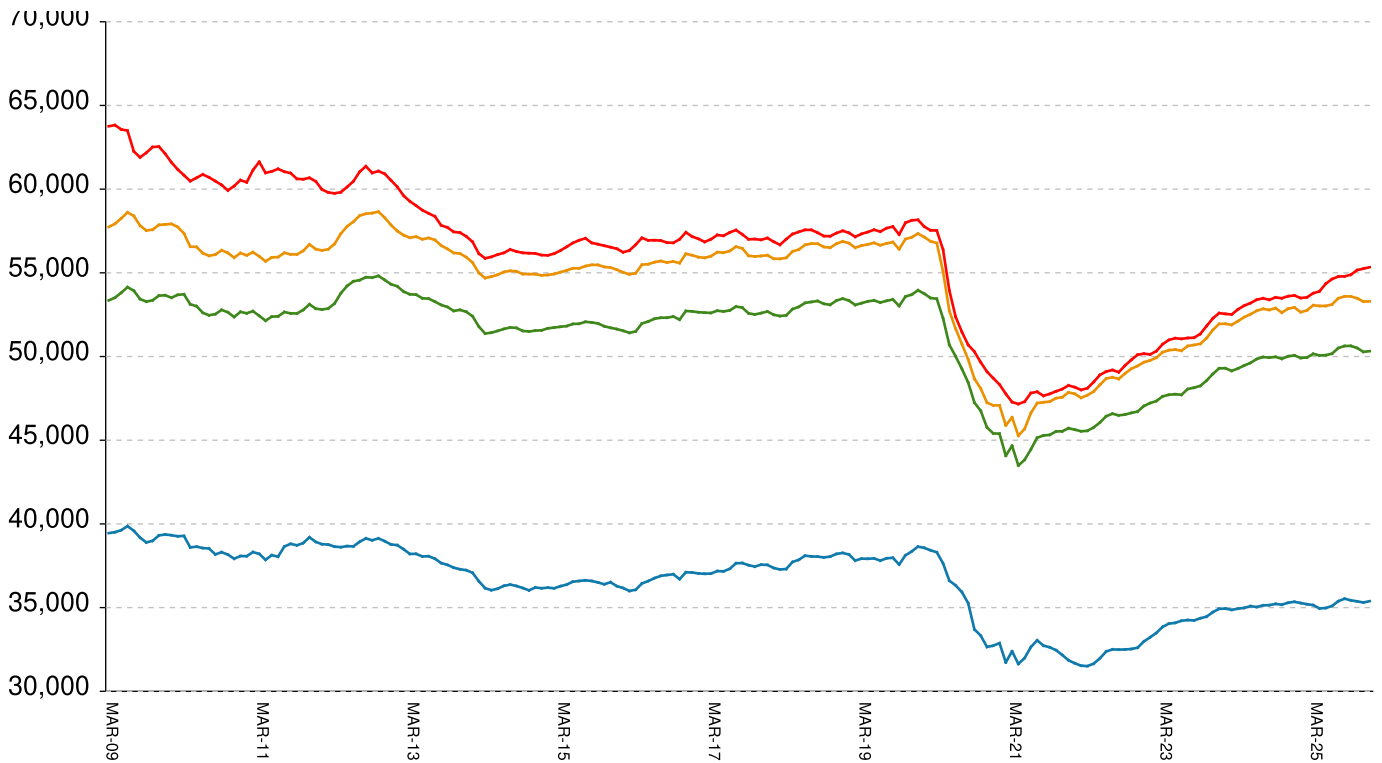
## Sixty & Up (%)



Inmate counts & percentages by age, for past 48 months													
Month	Avg Age	Teens		Twenties		Thirties		Forties		Fifties		Sixty & Up	
		Num-ber	Per-cent	Num-ber	Per-cent	Num-ber	Per-cent	Num-ber	Per-cent	Num-ber	Per-cent	Num-ber	Per-cent
Dec-21	40.78	302	0.64%	10594	22.51%	14732	31.30%	10685	22.71%	6566	13.95%	4195	8.91%
Jan-22	40.84	293	0.63%	10470	22.42%	14639	31.35%	10640	22.78%	6569	14.07%	4204	9.00%
Feb-22	40.85	298	0.64%	10471	22.40%	14675	31.40%	10665	22.82%	6566	14.05%	4224	9.04%
Mar-22	40.85	295	0.63%	10518	22.32%	14766	31.34%	10728	22.77%	6576	13.96%	4253	9.03%
Apr-22	40.88	285	0.60%	10511	22.27%	14759	31.27%	10784	22.85%	6599	13.98%	4268	9.04%
May-22	40.91	282	0.60%	10495	22.21%	14810	31.34%	10817	22.89%	6600	13.97%	4304	9.11%
Jun-22	40.9	307	0.64%	10581	22.19%	14926	31.30%	10927	22.91%	6631	13.91%	4331	9.08%
Jul-22	40.94	316	0.66%	10536	22.04%	14969	31.31%	10969	22.94%	6673	13.96%	4359	9.12%
Aug-22	40.98	319	0.67%	10504	21.96%	15019	31.40%	11010	23.02%	6709	14.03%	4400	9.20%
Sep-22	41.02	316	0.66%	10422	21.75%	15041	31.39%	10981	22.92%	6737	14.06%	4432	9.25%
Oct-22	41.05	322	0.67%	10365	21.63%	15127	31.56%	11035	23.02%	6752	14.09%	4450	9.28%
Nov-22	41.06	334	0.69%	10388	21.55%	15228	31.59%	11137	23.10%	6799	14.10%	4495	9.32%
Dec-22	41.09	341	0.70%	10349	21.33%	15311	31.55%	11159	23.00%	6851	14.12%	4528	9.33%
Jan-23	41.12	329	0.68%	10326	21.23%	15391	31.64%	11198	23.02%	6870	14.12%	4571	9.40%
Feb-23	41.15	318	0.65%	10328	21.15%	15459	31.65%	11289	23.11%	6874	14.07%	4622	9.46%
Mar-23	41.14	318	0.65%	10381	21.12%	15547	31.63%	11377	23.14%	6924	14.09%	4622	9.40%
Apr-23	41.17	308	0.63%	10373	21.10%	15549	31.63%	11385	23.16%	6927	14.09%	4630	9.42%
May-23	41.2	314	0.64%	10328	21.10%	15549	31.76%	11360	23.21%	6919	14.13%	4645	9.49%
Jun-23	41.23	315	0.64%	10301	20.93%	15614	31.73%	11391	23.14%	6938	14.10%	4667	9.48%
Jul-23	41.26	322	0.65%	10310	20.88%	15686	31.77%	11502	23.30%	6978	14.13%	4702	9.52%
Aug-23	41.32	308	0.62%	10266	20.76%	15626	31.60%	11537	23.33%	6979	14.11%	4748	9.60%
Sep-23	41.34	318	0.64%	10282	20.72%	15643	31.52%	11601	23.38%	7004	14.11%	4784	9.64%
Oct-23	41.35	335	0.67%	10294	20.61%	15754	31.54%	11728	23.48%	7054	14.12%	4831	9.67%
Nov-23	41.37	336	0.67%	10388	20.60%	15855	31.45%	11858	23.52%	7120	14.12%	4867	9.65%
Dec-23	41.4	345	0.68%	10353	20.52%	15834	31.39%	11904	23.60%	7151	14.17%	4870	9.65%
Jan-24	41.43	350	0.69%	10337	20.48%	15909	31.52%	11916	23.61%	7182	14.23%	4891	9.69%
Feb-24	41.46	344	0.68%	10288	20.35%	15880	31.41%	11946	23.63%	7194	14.23%	4916	9.72%
Mar-24	41.49	352	0.69%	10302	20.31%	15902	31.35%	11994	23.64%	7232	14.26%	4953	9.76%
Apr-24	41.51	370	0.73%	10340	20.27%	15962	31.29%	12111	23.74%	7274	14.26%	4999	9.80%
May-24	41.54	383	0.75%	10335	20.18%	16003	31.25%	12133	23.70%	7306	14.27%	5050	9.86%
Jun-24	41.57	397	0.77%	10321	20.14%	16018	31.25%	12142	23.69%	7281	14.20%	5105	9.96%
Jul-24	41.6	396	0.77%	10308	20.10%	16045	31.29%	12221	23.83%	7293	14.22%	5152	10.05%
Aug-24	41.63	384	0.75%	10239	19.96%	16025	31.24%	12226	23.83%	7275	14.18%	5156	10.05%
Sep-24	41.67	384	0.75%	10193	19.89%	15959	31.14%	12249	23.90%	7286	14.22%	5179	10.11%
Oct-24	41.7	382	0.74%	10223	19.88%	16006	31.12%	12255	23.83%	7323	14.24%	5246	10.20%
Nov-24	41.74	378	0.74%	10157	19.77%	15993	31.12%	12288	23.91%	7289	14.19%	5282	10.28%
Dec-24	41.78	379	0.74%	10148	19.73%	15951	31.01%	12332	23.98%	7326	14.24%	5299	10.30%
Jan-25	41.82	385	0.75%	10095	19.68%	15818	30.84%	12346	24.07%	7336	14.30%	5319	10.37%
Feb-25	41.83	369	0.72%	10166	19.73%	15872	30.80%	12426	24.11%	7357	14.28%	5349	10.38%
Mar-25	41.85	381	0.74%	10167	19.71%	15901	30.82%	12511	24.25%	7359	14.27%	5375	10.42%
Apr-25	41.9	367	0.71%	10114	19.64%	15842	30.76%	12537	24.35%	7337	14.25%	5416	10.52%
May-25	41.93	360	0.70%	10086	19.55%	15855	30.73%	12532	24.29%	7331	14.21%	5437	10.54%
Jun-25	41.93	365	0.71%	10125	19.58%	16006	30.95%	12575	24.32%	7342	14.20%	5483	10.60%
Jul-25	41.94	355	0.68%	10149	19.50%	16007	30.76%	12683	24.37%	7316	14.06%	5525	10.62%
Aug-25	41.97	351	0.68%	10065	19.38%	15978	30.76%	12729	24.50%	7299	14.05%	5525	10.64%
Sep-25	41.99	359	0.69%	10068	19.37%	15961	30.70%	12729	24.48%	7330	14.10%	5558	10.69%
Oct-25	42.05	339	0.66%	9967	19.26%	15837	30.60%	12720	24.58%	7327	14.16%	5561	10.75%
Nov-25	42.11	329	0.64%	9890	19.15%	15783	30.56%	12745	24.68%	7321	14.17%	5596	10.83%

# All housed offenders under GDC jurisdiction

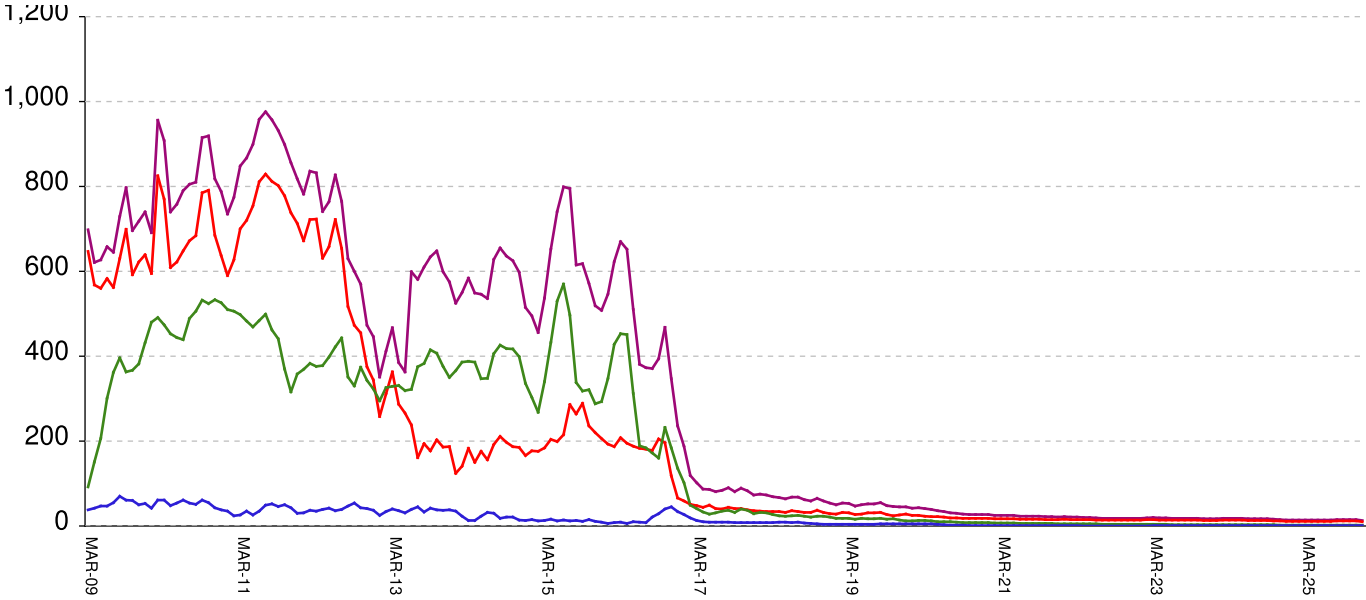
March 20, 2009 through December 12, 2025



<b>All in bed + probs in jail + backlog</b>	<b>RISES BY</b>	<b>72</b>	<b>from</b>	<b>55,301</b>	<b>to</b>	<b>55,373</b>
Probationers in jail	falls by	1	from	14	to	13
Inmate jail backlog	RISES BY	74	from	1,989	to	2,063
<b>All in beds: inmate + Prob + parole</b>	<b>falls by</b>	<b>1</b>	<b>from</b>	<b>53,298</b>	<b>to</b>	<b>53,297</b>
Total probationers in beds	RISES BY	7	from	2,973	to	2,980
Probation detention centers	falls by	2	from	1,501	to	1,499
Probation boot camps	falls by	...	from		to	
Probation RSAT	RISES BY	9	from	1,472	to	1,481
Parole revocation centers	falls by	...	from		to	
<b>All in inmate beds: state + other</b>	<b>falls by</b>	<b>8</b>	<b>from</b>	<b>50,325</b>	<b>to</b>	<b>50,317</b>
Other inmate facilities:	RISES BY	18	from	14,929	to	14,947
Inmate boot camps	...	...	...	0	at	0
Private prisons	RISES BY	9	from	8,049	to	8,058
County prisons	falls by	4	from	4,134	to	4,130
Transitional centers	RISES BY	13	from	2,746	to	2,759
<b>In state prisons only</b>	<b>falls by</b>	<b>26</b>	<b>from</b>	<b>35,396</b>	<b>to</b>	<b>35,370</b>

# Probationers in jail awaiting placement in facilities

March 20, 2009 through December 12, 2025



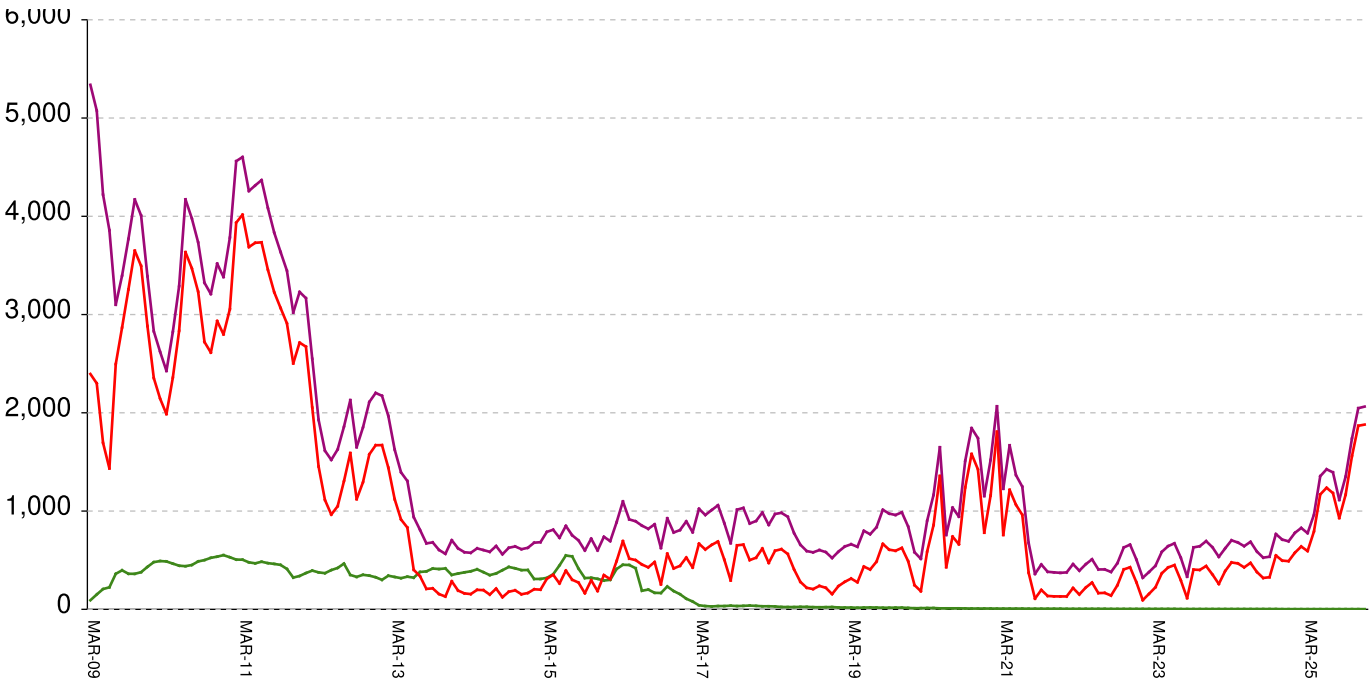
This graph shows, for each Friday since March 20 2009, the number of sentenced felony probationers who were waiting in jail for placement in facilities that GDC operates for housing probationers -- detention centers, probation residential substance abuse treatment (RSAT) centers, and probation boot camps. Counts include both those offenders sentenced directly from court, and those whose street probation was revoked.

Total probationers waiting in jail	falls by	1	from	14	to	13
...waiting for detention centers	falls by	1	from	11	to	10
...waiting for probation RSAT	...	...	...	level	at	2
...waiting for probation boot camps	...	...	...	level	at	1

The highest number of probationers waiting in jail was	994	on	05-MAR-10
...highest number waiting for detention centers was	859	on	05-MAR-10
...highest number waiting for probation RSAT was	592	on	10-JUL-15
...highest number waiting for probation boot camps was	70	on	18-SEP-09

# State inmates in jail awaiting placement in facilities

March 20, 2009 through December 12, 2025



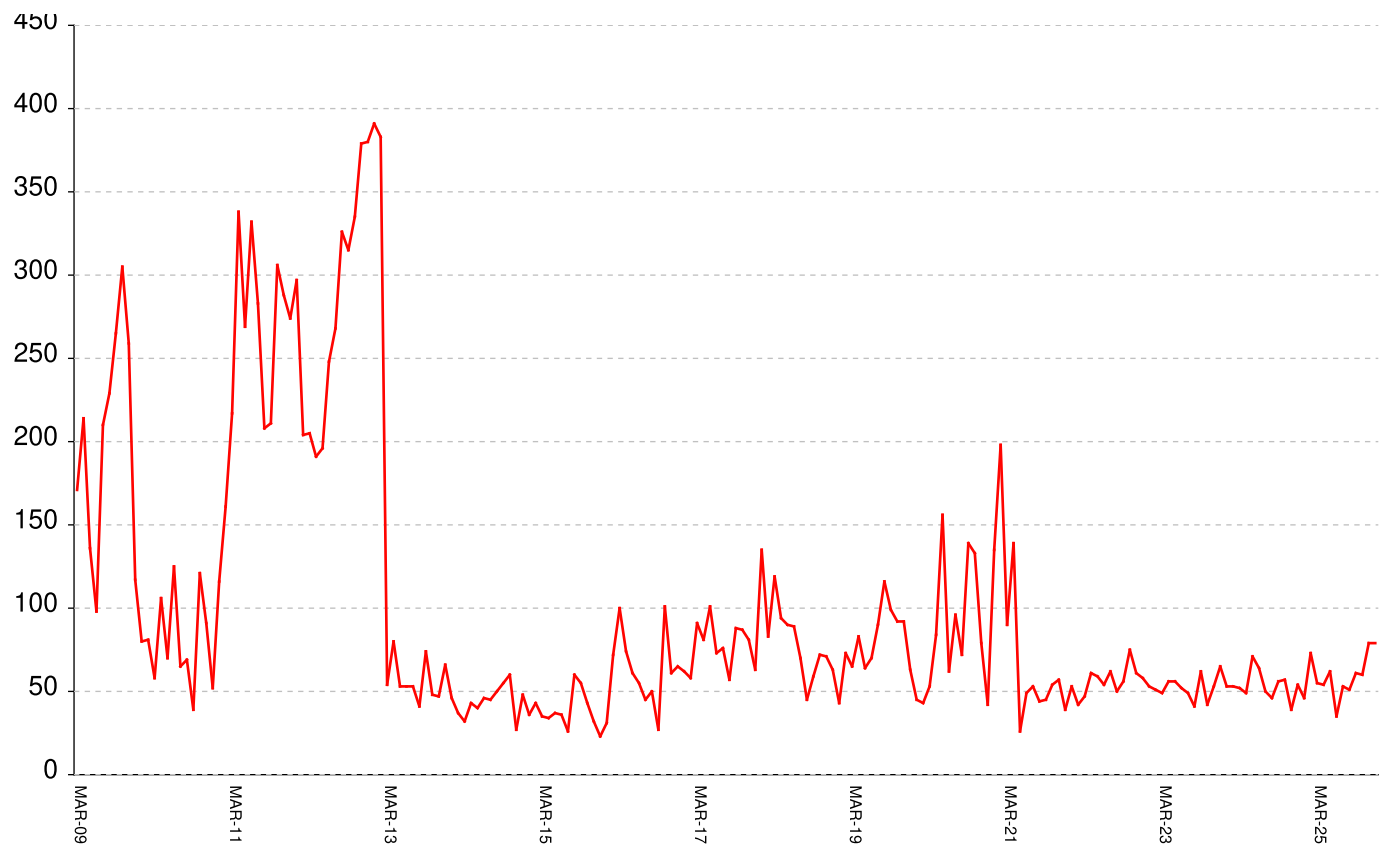
This graph shows, for each Friday since March 2009, the number of prisoners, probationers, and parolees in local jails who have been sentenced or revoked to state prison and whose documents have been received and verified by GDC. Most are almost immediately assigned to a diagnostic center, and are designated as in "admission processing". Of those a few hundred may be in the "transportation delayed" category because there is no room in the assigned diagnostic center, or because the inmate is being held for medical reasons, or for other court proceedings, or other reasons. Those remaining are "ready to be picked up".

Total state inmates waiting in jail	RISES BY	74	from	1989	to	2063
... not yet assigned to a diagnostic center	RISES BY	1	from	10	to	11
... total "in admission processing"	RISES BY	73	from	1979	to	2052
... with "transportation delayed"	RISES BY	1	from	171	to	172
... ready to be picked up	RISES BY	72	from	1808	to	1880

The highest number of state inmates waiting in jail was	5338	on	27-MAR-09
... highest number not asg to a diagnostic center was	2881	on	12-JUN-09
... highest number in admission processing was	4916	on	25-MAR-11
... highest number with transportation delayed was	645	on	14-JAN-11
... highest number ready to be pickup was	4435	on	25-MAR-11

# Female state inmates in jail awaiting pickup

March 20, 2009 through December 12, 2025



This graph shows, for each Friday since March 2009, the number of female state prisoners in local jails who were assigned to diagnostic centers but had not yet been picked up.

**Female state inmates in jails waiting picked up**      **RISES BY**    **7**      **from**    **72**      **to**      **79**

The highest number of female inmates waiting in jail was      424    on    01-FEB-13

The lowest number of female inmates waiting in jail was      17    on    20-MAR-20



Summary of housed prisoners, parolees, and probationers									
Week Ending	Prison	Parole	Probation			Prison+parole+probation	Jail		Total
	Total inmates	Revocation centers	Prob RSAT	Boot camp	Detention		Inmate backlog	Probationers	Prison+parole+probation+jail
20-Dec-2024	50089		1505		1370	52964	692	14	53670
27-Dec-2024	50093		1487		1357	52937	702	14	53653
03-Jan-2025	50009		1474		1349	52832	794	14	53640
10-Jan-2025	49957		1478		1312	52747	778	14	53539
17-Jan-2025	50011		1456		1309	52776	752	14	53542
24-Jan-2025	49767		1407		1212	52386	957	14	53357
31-Jan-2025	49828		1453		1244	52525	862	14	53401
07-Feb-2025	49842		1474		1280	52596	828	14	53438
14-Feb-2025	49917		1494		1305	52716	746	14	53476
21-Feb-2025	49977		1475		1354	52806	778	14	53598
28-Feb-2025	50043		1464		1396	52903	718	14	53635
07-Mar-2025	50081		1449		1390	52920	679	14	53613
14-Mar-2025	50181		1476		1428	53085	664	14	53763
21-Mar-2025	50155		1474		1456	53085	703	14	53802
28-Mar-2025	50212		1477		1471	53160	775	14	53949
04-Apr-2025	50155		1483		1488	53126	772	14	53912
11-Apr-2025	50044		1473		1496	53013	804	14	53831
18-Apr-2025	50040		1449		1489	52978	895	14	53887
25-Apr-2025	50035		1454		1486	52975	962	14	53951
02-May-2025	50070		1461		1501	53032	1094	14	54140
09-May-2025	49969		1446		1504	52919	1192	14	54125
16-May-2025	50043		1435		1473	52951	1355	14	54320
23-May-2025	50107		1428		1501	53036	1453	14	54503
30-May-2025	50224		1437		1509	53170	1477	14	54661
06-Jun-2025	50133		1455		1482	53070	1520	14	54604
13-Jun-2025	50139		1440		1487	53066	1524	14	54604
20-Jun-2025	50045		1425		1525	52995	1543	14	54552
27-Jun-2025	50363		1438		1512	53313	1425	14	54752
04-Jul-2025	50404		1450		1516	53370	1394	14	54778
11-Jul-2025	50529		1433		1531	53493	1191	14	54698
18-Jul-2025	50525		1462		1492	53479	1246	14	54739
25-Jul-2025	50570		1485		1514	53569	1318	14	54901
01-Aug-2025	50604		1492		1499	53595	1266	14	54875
08-Aug-2025	50586		1483		1482	53551	1112	14	54677
15-Aug-2025	50624		1487		1483	53594	1113	14	54721
22-Aug-2025	50654		1478		1463	53595	1204	15	54814
29-Aug-2025	50683		1491		1461	53635	1208	15	54858
05-Sep-2025	50623		1491		1458	53572	1164	15	54751
12-Sep-2025	50671		1504		1474	53649	1168	15	54832
19-Sep-2025	50604		1479		1477	53560	1350	15	54925
26-Sep-2025	50642		1490		1446	53578	1456	15	55049
03-Oct-2025	50592		1496		1426	53514	1545	15	55074
10-Oct-2025	50542		1502		1438	53482	1568	15	55065
17-Oct-2025	50565		1526		1461	53552	1619	15	55186
24-Oct-2025	50468		1540		1470	53478	1738	15	55231
31-Oct-2025	50381		1483		1513	53377	1861	15	55253
07-Nov-2025	50231		1503		1493	53227	1898	15	55140
14-Nov-2025	50276		1516		1485	53277	1907	15	55199
21-Nov-2025	50343		1512		1498	53353	1956	15	55324
28-Nov-2025	50271		1495		1515	53281	2047	15	55343
05-Dec-2025	50325		1472		1501	53298	1989	14	55301
12-Dec-2025	50317		1481		1499	53297	2063	13	55373

## Offenders housed in facilities for state prisoners

Week ending	In state prisons	In facilities other than state prisons						Total Inmates
		Transition centers	County prisons	Pre-rel centers	Private prisons	Inmate boot camps	Total others	
20-Dec-2024	35382	2755	4417		7534	1	14707	50089
27-Dec-2024	35380	2734	4433		7545	1	14713	50093
03-Jan-2025	35335	2721	4419		7533	1	14674	50009
10-Jan-2025	35311	2691	4428		7526	1	14646	49957
17-Jan-2025	35313	2677	4467		7553	1	14698	50011
24-Jan-2025	35190	2631	4416		7529	1	14577	49767
31-Jan-2025	35220	2660	4419		7528	1	14608	49828
07-Feb-2025	35212	2646	4438		7545	1	14630	49842
14-Feb-2025	35219	2641	4451		7605	1	14698	49917
21-Feb-2025	35197	2629	4488		7662	1	14780	49977
28-Feb-2025	35183	2622	4500		7737	1	14860	50043
07-Mar-2025	35161	2624	4515		7780	1	14920	50081
14-Mar-2025	35187	2617	4528		7848	1	14994	50181
21-Mar-2025	35144	2608	4487		7915	1	15011	50155
28-Mar-2025	35103	2612	4520		7976	1	15109	50212
04-Apr-2025	35047	2599	4524		7984	1	15108	50155
11-Apr-2025	34951	2596	4501		7995	1	15093	50044
18-Apr-2025	34906	2591	4515		8027	1	15134	50040
25-Apr-2025	34904	2590	4522		8018	1	15131	50035
02-May-2025	34954	2567	4511		8037	1	15116	50070
09-May-2025	34900	2544	4495		8029	1	15069	49969
16-May-2025	34954	2554	4502		8032	1	15089	50043
23-May-2025	35001	2577	4501		8028	0	15106	50107
30-May-2025	35065	2605	4511		8043	0	15159	50224
06-Jun-2025	35068	2587	4440		8038	0	15065	50133
13-Jun-2025	35092	2599	4416		8032	0	15047	50139
20-Jun-2025	35027	2590	4442		7986	0	15018	50045
27-Jun-2025	35203	2645	4483		8032	0	15160	50363
04-Jul-2025	35284	2652	4430		8038	0	15120	50404
11-Jul-2025	35380	2669	4436		8044	0	15149	50529
18-Jul-2025	35399	2690	4400		8036	0	15126	50525
25-Jul-2025	35464	2698	4363		8045	0	15106	50570
01-Aug-2025	35516	2709	4347		8032	0	15088	50604
08-Aug-2025	35507	2698	4347		8034	0	15079	50586
15-Aug-2025	35522	2714	4349		8039	0	15102	50624
22-Aug-2025	35539	2726	4348		8041	0	15115	50654
29-Aug-2025	35576	2714	4352		8041	0	15107	50683
05-Sep-2025	35478	2721	4352		8072	0	15145	50623
12-Sep-2025	35437	2739	4396		8099	0	15234	50671
19-Sep-2025	35399	2749	4378		8078	0	15205	50604
26-Sep-2025	35420	2732	4384		8106	0	15222	50642
03-Oct-2025	35389	2727	4371		8105	0	15203	50592
10-Oct-2025	35390	2705	4350		8097	0	15152	50542
17-Oct-2025	35402	2716	4337		8110	0	15163	50565
24-Oct-2025	35359	2744	4297		8068	0	15109	50468
31-Oct-2025	35328	2751	4237		8065	0	15053	50381
07-Nov-2025	35288	2748	4167		8028	0	14943	50231
14-Nov-2025	35293	2750	4193		8040	0	14983	50276
21-Nov-2025	35342	2756	4211		8034	0	15001	50343
28-Nov-2025	35305	2745	4168		8053	0	14966	50271
05-Dec-2025	35396	2746	4134		8049	0	14929	50325
12-Dec-2025	35370	2759	4130		8058	0	14947	50317

Offenders waiting in local jails for state facilities										
	Probationers waiting in jail				Probationers waiting in jail					
Week ending	.. for PDCs	.. for RSAT	.. for boot camps	Total	Total backlog	Not yet assigned	In adm process	Delayed transport	Ready for pickup	Assigned females
20-Dec-2024	11	2	1	14	692	22	670	180	490	54
27-Dec-2024	11	2	1	14	702	23	679	178	501	41
03-Jan-2025	11	2	1	14	794	22	772	179	593	47
10-Jan-2025	11	2	1	14	778	22	756	180	576	46
17-Jan-2025	11	2	1	14	752	22	730	182	548	53
24-Jan-2025	11	2	1	14	957	20	937	182	755	78
31-Jan-2025	11	2	1	14	862	21	841	184	657	60
07-Feb-2025	11	2	1	14	828	9	819	180	639	73
14-Feb-2025	11	2	1	14	746	8	738	180	558	68
21-Feb-2025	11	2	1	14	778	7	771	181	590	52
28-Feb-2025	11	2	1	14	718	6	712	180	532	58
07-Mar-2025	11	2	1	14	679	6	673	178	495	56
14-Mar-2025	11	2	1	14	664	6	658	175	483	56
21-Mar-2025	11	2	1	14	703	8	695	173	522	38
28-Mar-2025	11	2	1	14	775	9	766	173	593	55
04-Apr-2025	11	2	1	14	772	9	763	171	592	42
11-Apr-2025	11	2	1	14	804	9	795	169	626	63
18-Apr-2025	11	2	1	14	895	10	885	168	717	50
25-Apr-2025	11	2	1	14	962	9	953	162	791	54
02-May-2025	11	2	1	14	1094	9	1085	168	917	49
09-May-2025	11	2	1	14	1192	9	1183	171	1012	58
16-May-2025	11	2	1	14	1355	8	1347	178	1169	62
23-May-2025	11	2	1	14	1453	8	1445	181	1264	69
30-May-2025	11	2	1	14	1477	9	1468	184	1284	58
06-Jun-2025	11	2	1	14	1520	8	1512	176	1336	65
13-Jun-2025	11	2	1	14	1524	8	1516	172	1344	52
20-Jun-2025	11	2	1	14	1543	9	1534	179	1355	46
27-Jun-2025	11	2	1	14	1425	9	1416	179	1237	35
04-Jul-2025	11	2	1	14	1394	9	1385	202	1183	53
11-Jul-2025	11	2	1	14	1191	9	1182	201	981	50
18-Jul-2025	11	2	1	14	1246	9	1237	198	1039	58
25-Jul-2025	11	2	1	14	1318	9	1309	203	1106	70
01-Aug-2025	11	2	1	14	1266	9	1257	192	1065	59
08-Aug-2025	11	2	1	14	1112	11	1101	177	924	40
15-Aug-2025	11	2	1	14	1113	10	1103	174	929	51
22-Aug-2025	12	2	1	15	1204	10	1194	171	1023	60
29-Aug-2025	12	2	1	15	1208	8	1200	175	1025	65
05-Sep-2025	12	2	1	15	1164	8	1156	177	979	63
12-Sep-2025	12	2	1	15	1168	8	1160	178	982	68
19-Sep-2025	12	2	1	15	1350	8	1342	176	1166	61
26-Sep-2025	12	2	1	15	1456	9	1447	169	1278	79
03-Oct-2025	12	2	1	15	1545	8	1537	169	1368	75
10-Oct-2025	12	2	1	15	1568	8	1560	171	1389	66
17-Oct-2025	12	2	1	15	1619	9	1610	171	1439	73
24-Oct-2025	12	2	1	15	1738	8	1730	172	1558	60
31-Oct-2025	12	2	1	15	1861	10	1851	167	1684	53
07-Nov-2025	12	2	1	15	1898	11	1887	168	1719	58
14-Nov-2025	12	2	1	15	1907	12	1895	169	1726	67
21-Nov-2025	12	2	1	15	1956	11	1945	175	1770	86
28-Nov-2025	12	2	1	15	2047	11	2036	168	1868	79
05-Dec-2025	11	2	1	14	1989	10	1979	171	1808	72
12-Dec-2025	10	2	1	13	2063	11	2052	172	1880	79