

# Friday Report - overview and contents

The pages in The Friday Report are about adult offenders in Georgia's prisons and jails. They contain statistical snapshots and trends in the populations and movements of offenders in the state prison system, on probation, on parole, and in local jails. Information comes from databases of the Georgia Department of Corrections (GDC) and the Board of Pardons and Paroles, and from data provided by local jailers. Information is summarized into tables in the GDC/Parole Data Warehouse, and is extracted into these pages each Friday. Pages are organized according to the table that supplied the data.

<b>The Monthly Research Table</b> , named "MO_RESRCH" or simply "MO", contains data about state prisoners, grouped into statistically interesting categories. The table contains one record per month, from January 2000 to the present. Despite its being "monthly", it is updated weekly, because some data trickles in for several weeks before it becomes stable history.	
Page	Content
MO-01	Clemencies and maxouts. Monthly graph from 2000 to present shows the monthly departures from prison via actions by the Georgia Parole Board (clemencies), and via service of 100% of the court ordered sentence (maxouts)
MO-02	48 months of releases. Table shows counts and percentages of releases via clemencies and maxouts, with and without probation to follow, for each of the past 48 months.
MO-03	Methamphetamine. Monthly graph from 2000 to present shows admissions, departures, population, and percent of population of inmates with a current offense of methamphetamine possession, sale, manufacturing, or trafficking, and the changing racial composition of the methamphetamine population
MO-04	Non-violent first incarcerants. Monthly graph from 2000 to present shows admissions, departures, population, and percent of population of inmates without violent or sex crimes, who are serving their first Georgia felony incarceration.
MO-05	Seven Deadly Sins. Monthly graph from 2000 to present shows admissions, departures, population, and percent of population of inmates convicted of kidnapping, armed robbery, rape, aggravated sodomy, aggravated sexual battery, and aggravated child molestation, for whom especially severe penalties are prescribed.
MO-06	48 months of inmate subpopulations. Table shows number and percentage of white and non-white inmates with methamphetamine offenses, and non-violent first incarcerants, and inmates convicted of the Seven Deadly Sins.
MO-07	Inmate age overview. Line graph shows the average age of the inmate population, by month from 2000 to the present. Pie chart shows the number of currently active inmates in their teens, twenties, thirties, forties, fifties, and age sixty+.
MO-08	Counts by age group. Graphs show the count, by month from 2000 to the present, of inmates in their teens, twenties, thirties, forties, fifties, and age sixty+.
MO-09	Percentages by age group. Graphs show the percentages, by month from 2000 to the present, of inmates in their teens, twenties, thirties, forties, fifties, and age sixty+.
MO-10	48 months of inmate ages. Table shows average age of the standing population, and counts and percentages of teens, twenties, thirties, forties, fifties, and sixty+, for each of the past 48 months.

# Friday Report - overview and contents (continued)

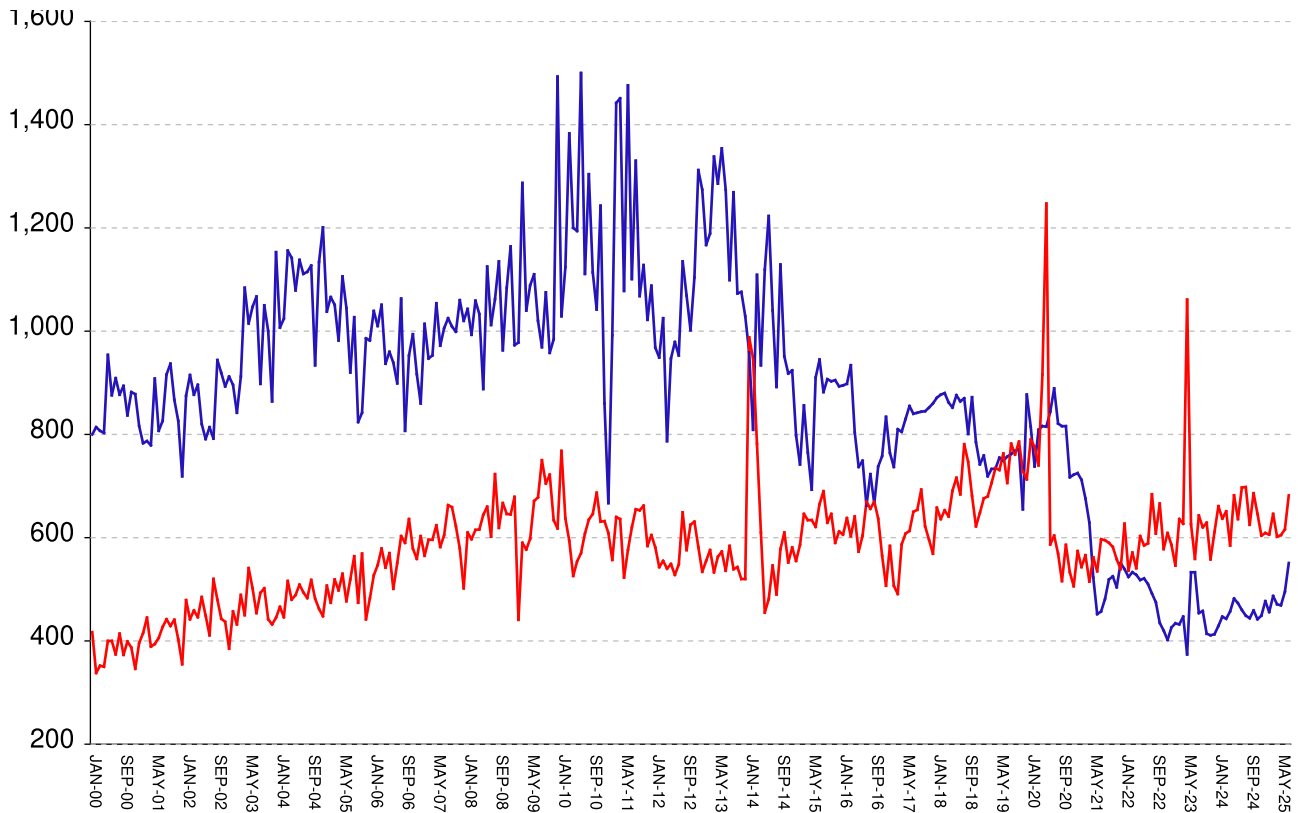
**The MSR Table** is based on the Management Summary Report (MSR), a snapshot report posted each week in GDC's Scribe database. MSR\_RESRCH gathers that data into weekly trends, with one record for each Friday since March 20th, 2009

Page	Content
<b>MSR-01</b>	All housed offenders. Weekly graph from March 20, 2009 to present, showing counts of inmates in state prisons, transitional centers, county prisons, private prisons, inmate boot camps, parole revocation centers, probation Residential Substance Abuse Treatment (RSAT), probation boot camps, probation detention centers, plus the inmate jail backlog and probationers in jail waiting for state facilities.
<b>MSR-02</b>	Probationers in jail. Weekly graph from March 20, 2009 to present, showing counts of probationers in local jails awaiting placement in probation detention centers, probation RSAT centers, and probation boot camps.
<b>MSR-03</b>	State inmates in jail. Weekly graph from March 20, 2009 to present, showing counts of state inmates in local jails awaiting placement in state prison facilities – including those who have not yet been assigned to a diagnostic center, those whose transportation has been delayed for some reason, and those who are ready to be picked up.
<b>MSR-04</b>	Female state inmates in jail. Weekly graph from March 20, 2009 to present, showing counts of female state inmates awaiting placement in a state prison for females.
<b>MSR-05</b>	52-week table: housed offenders. Data for each of the past 52 weeks, showing total prison inmates, parolees in revocation centers, probationers in RSAT/boot camp/detention centers, inmate jail backlog, probationers in jail waiting for facilities, with subtotals.
<b>MSR-06</b>	52-week table: state prisoners. Data for each of the past 52 weeks, showing inmates in state prisons, transition centers, county prisons, pre-release centers, private prisons, and inmate boot camps, with subtotals.
<b>MSR-07</b>	52-week table: waiting in jail. Data for each of the past 52 weeks, showing probationers waiting for detention centers, RSAT, and boot camp; and state prisoners not yet assigned to diagnostic centers, in admission process, with delayed transport, and ready for pickup, with subtotals.

## Releases by clemency and maxout, Jan-2000 to Jul-2025

There are two main ways of being released from a Georgia prison -- by actions of the Board of Pardons and Paroles ("Clemencies") and by service of 100% of the court-ordered sentences ("Maxouts").

"Clemency" includes paroles, reprieves, commutations, and transfer to other confinement prior to expiration of sentence. "Other Releases" includes deaths, and sentences modified or overturned by the courts. Clemencies and maxouts may or may not be followed by periods of probation.



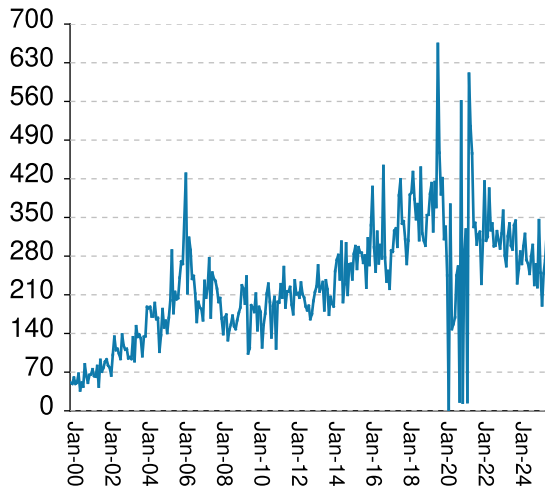
A. Clemency with probation to follow	RISES BY	59	from	434	to	493
B. Clemency only	falls by	3	from	61	to	58
C. Maxout with probation to follow	RISES BY	43	from	576	to	619
D. Maxout only (unsupervised)	RISES BY	23	from	40	to	63
E. Other releases	falls by	3	from	36	to	33
F. Total releases (A+B+C+D+E)	RISES BY	119	from	1147	to	1266
<b>G. Total clemencies (A+B) (top line)</b>	<b>RISES BY</b>	<b>56</b>	<b>from</b>	<b>495</b>	<b>to</b>	<b>551</b>
<b>H. Total maxouts (C+D) (bottom line)</b>	<b>RISES BY</b>	<b>66</b>	<b>from</b>	<b>616</b>	<b>to</b>	<b>682</b>
I. % of releases by clemency (G/F)	RISES BY	.36%	from	43.16%	to	43.52%
J. % of releases by maxout (H/F)	RISES BY	.16%	from	53.71%	to	53.87%
K. Supervised releases (A+B+C)	RISES BY	99	from	1071	to	1170
L. % unsupervised releases (D/F)	RISES BY	1.49%	from	3.49%	to	4.98%
M. % supervised releases (K/F)	falls by	.95%	from	93.37%	to	92.42%

Monthly releases from prison by type of release, for the past 48 months										
	A	B	C	D	E	F	G	H	I	J
Month	Clemency + Prob	Clemency Only	Maxout + Prob	Maxout Only	Other rels	Total Releases (A+B+C+D+E)	Total Clemency (A+B)	Total Maxout (C+D)	Percent Clemency (G/F)	Percent Maxout (H/F)
Aug-21	410	71	529	66	28	1104	481	595	43.57%	53.89%
Sep-21	439	80	522	68	32	1141	519	590	45.49%	51.71%
Oct-21	446	79	526	56	21	1128	525	582	46.54%	51.60%
Nov-21	426	78	494	64	18	1080	504	558	46.67%	51.67%
Dec-21	469	82	483	56	18	1108	551	539	49.73%	48.65%
Jan-22	459	80	551	76	26	1192	539	627	45.22%	52.60%
Feb-22	444	80	465	71	24	1084	524	536	48.34%	49.45%
Mar-22	460	73	515	56	16	1120	533	571	47.59%	50.98%
Apr-22	456	72	471	70	16	1085	528	541	48.66%	49.86%
May-22	439	79	540	63	26	1147	518	603	45.16%	52.57%
Jun-22	457	64	528	57	21	1127	521	585	46.23%	51.91%
Jul-22	441	69	530	59	14	1113	510	589	45.82%	52.92%
Aug-22	425	67	619	65	21	1197	492	684	41.10%	57.14%
Sep-22	397	78	549	59	18	1101	475	608	43.14%	55.22%
Oct-22	373	62	605	61	23	1124	435	666	38.70%	59.25%
Nov-22	367	53	525	53	19	1017	420	578	41.30%	56.83%
Dec-22	342	60	550	59	28	1039	402	609	38.69%	58.61%
Jan-23	375	51	526	60	23	1035	426	586	41.16%	56.62%
Feb-23	388	46	495	51	17	997	434	546	43.53%	54.76%
Mar-23	377	55	573	63	24	1092	432	636	39.56%	58.24%
Apr-23	389	58	574	53	26	1100	447	627	40.64%	57.00%
May-23	327	47	931	130	20	1455	374	1061	25.70%	72.92%
Jun-23	462	71	568	58	19	1178	533	626	45.25%	53.14%
Jul-23	460	73	513	46	25	1117	533	559	47.72%	50.04%
Aug-23	402	52	589	54	22	1119	454	643	40.57%	57.46%
Sep-23	403	55	576	44	10	1088	458	620	42.10%	56.99%
Oct-23	363	51	578	51	31	1074	414	629	38.55%	58.57%
Nov-23	355	56	493	65	19	988	411	558	41.60%	56.48%
Dec-23	368	45	554	57	21	1045	413	611	39.52%	58.47%
Jan-24	368	61	598	63	32	1122	429	661	38.24%	58.91%
Feb-24	396	51	578	59	24	1108	447	637	40.34%	57.49%
Mar-24	380	63	589	62	20	1114	443	651	39.77%	58.44%
Apr-24	411	46	530	55	33	1075	457	585	42.51%	54.42%
May-24	428	54	607	75	26	1190	482	682	40.50%	57.31%
Jun-24	410	63	578	58	23	1132	473	636	41.78%	56.18%
Jul-24	398	62	633	64	38	1195	460	697	38.49%	58.33%
Aug-24	382	67	639	59	19	1166	449	698	38.51%	59.86%
Sep-24	380	64	560	65	34	1103	444	625	40.25%	56.66%
Oct-24	402	57	631	55	28	1173	459	686	39.13%	58.48%
Nov-24	389	53	593	53	23	1111	442	646	39.78%	58.15%
Dec-24	391	58	557	47	33	1086	449	604	41.34%	55.62%
Jan-25	419	58	563	46	30	1116	477	609	42.74%	54.57%
Feb-25	400	56	546	60	17	1079	456	606	42.26%	56.16%
Mar-25	432	55	595	51	23	1156	487	646	42.13%	55.88%
Apr-25	407	64	555	47	18	1091	471	602	43.17%	55.18%
May-25	423	46	552	53	26	1100	469	605	42.64%	55.00%
Jun-25	434	61	576	40	36	1147	495	616	43.16%	53.71%
Jul-25	493	58	619	63	33	1266	551	682	43.52%	53.87%

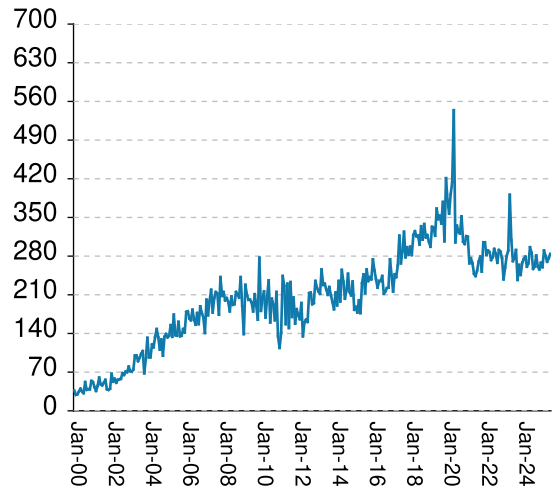
## Inmates with meth crimes, by month, Jan-2000 to Jul-2025

Methamphetamine is one of the most addictive drugs ever known. At first it induces intense euphoria, but with continued use causes severe depression and physical deterioration, including the dental catastrophe known as "meth mouth". Georgia's meth epidemic began in the early 2000s and has seen continued growth over the last 2 decades, with continued expansion beyond the originally predominate use by northern county white males.

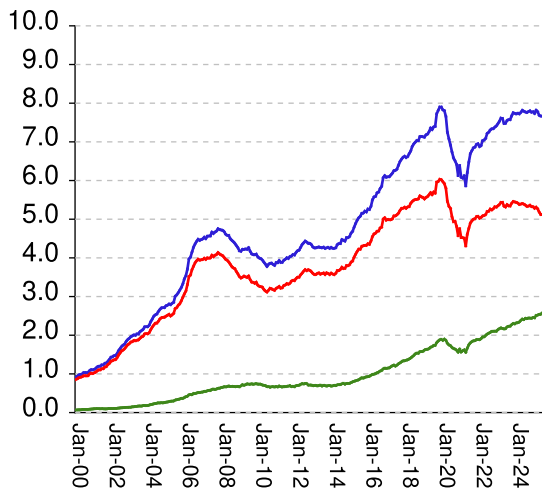
### Admissions



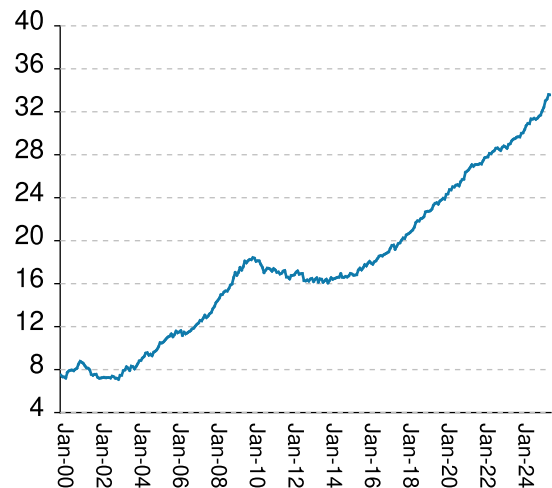
### Releases



### Population x1000



### Percent Non-White

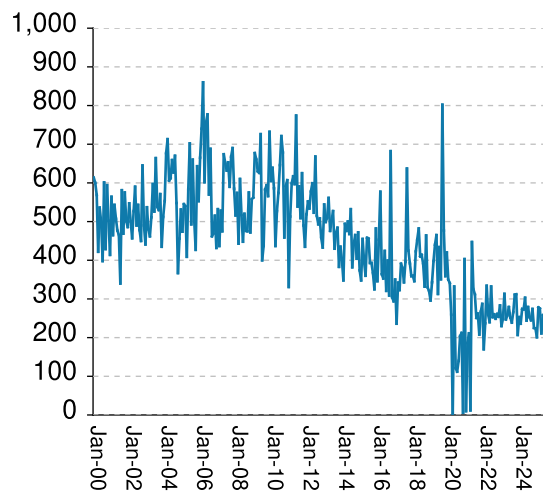


Methamphetamine admissions	RISES BY	49	from	274	to	323
Methamphetamine releases	RISES BY	8	from	276	to	284
<b>Methamphetamine population</b>	<b>RISES BY</b>	<b>39</b>	<b>from</b>	<b>7666</b>	<b>to</b>	<b>7705</b>
<b>Meth white population</b>	<b>RISES BY</b>	<b>1</b>	<b>from</b>	<b>5117</b>	<b>to</b>	<b>5118</b>
<b>Meth non-white population</b>	<b>RISES BY</b>	<b>11</b>	<b>from</b>	<b>2576</b>	<b>to</b>	<b>2587</b>
Percent meth inmates who are non-white	falls by	.02%	from	33.6%	to	33.58%

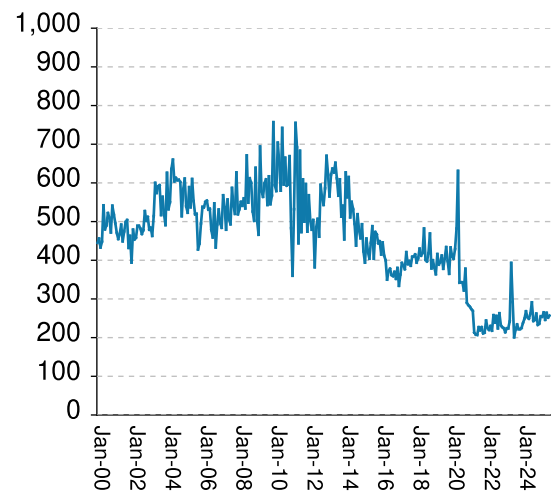
## Non-violent first-incarcerants, by month, Jan-2000 to Jul-2025

Historically, about one in six Georgia prison inmates has been a first-time incarcerant with a non-violent crime. In 2012 Georgia passed HB1176, which aimed to curb the growth of prison population by steering the least dangerous, least hardened offenders away from prison through pre-trial intervention, diversion, drug courts and treatment programs, and raising the dollar thresholds that define property felonies. The expectation is that over time, these measures will reduce the percentage of first-time non-violent incarcerants in prison.

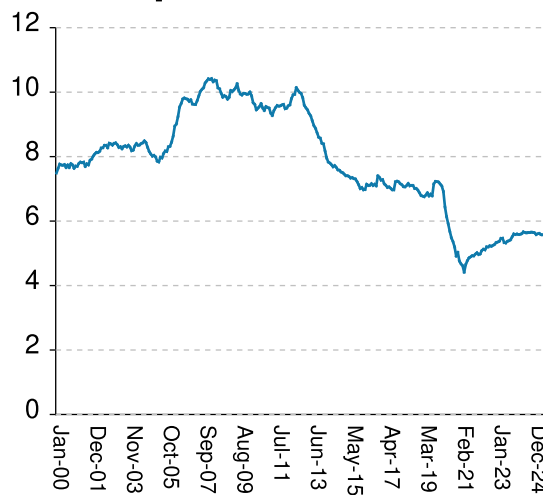
### Admissions



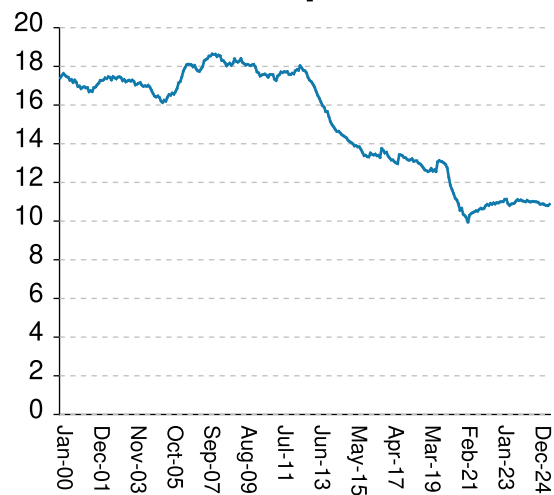
### Releases



### Population x1000



### % Total Population

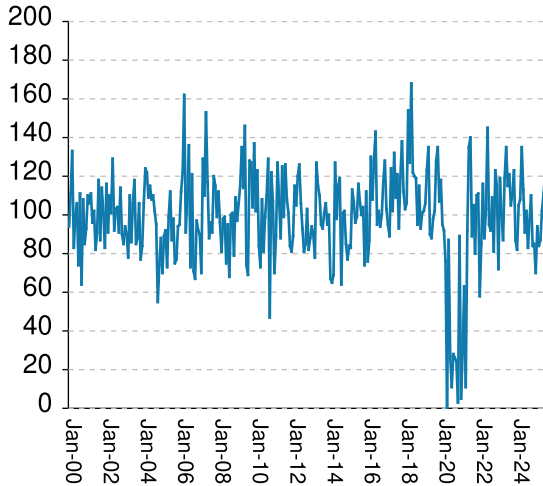


Non-viol/1st-Incar admissions	RISES BY	67	from	261	to	328
Non-viol/1st-Incar releases	RISES BY	5	from	252	to	257
Non-viol/1st-Incar population	RISES BY	71	from	5584	to	5655
Non-viol/1st-Incar % of total population	RISES BY	.07%	from	10.8%	to	10.87%

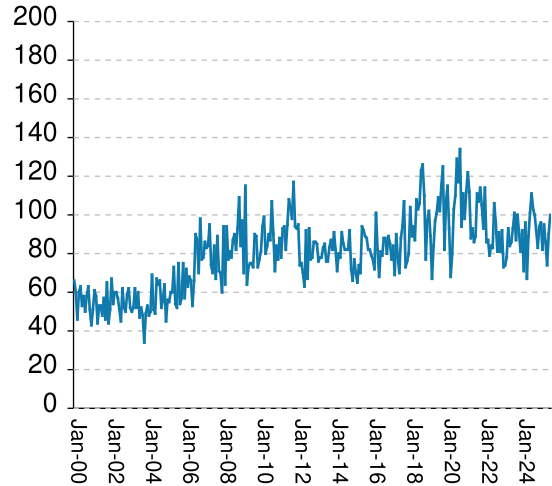
## 'Seven Deadly Sin', by month, Jan-2000 to Jul-2025

Tough legislation in 1995 imposed mandatory ten-year minimum terms for kidnapping, armed robbery, rape, aggravated sodomy, aggravated sexual battery, and aggravated child molestation, and a minimum of 25 years for murder. A second conviction resulted in life without parole. As predicted, longer prison terms caused population to climb steeply for about a decade. It then began to level off, as releases started catching up with admissions. The 2008 dip in percentage of total population (bottom right) was caused by the surge of methamphetamine convictions (Page MO-03). Note: these graphs include inmates convicted before 1995.

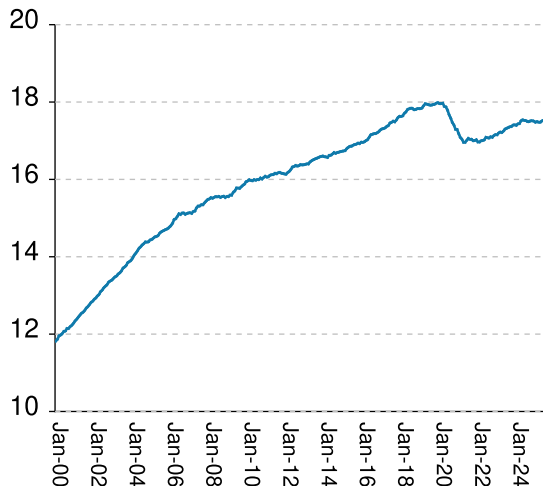
### Admissions



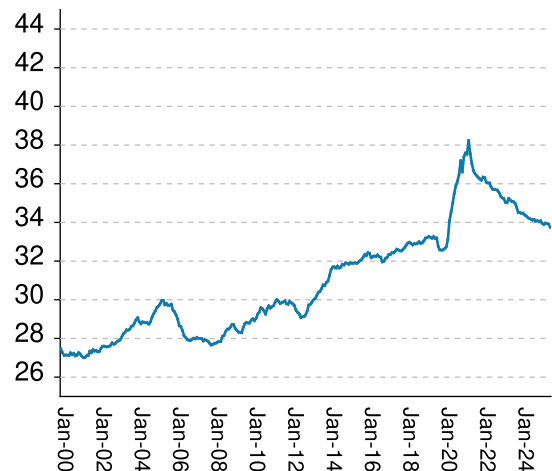
### Releases



### Population x1000



### % Total Population



"Seven Deadly Sin" admissions	RISES BY	9	from	111	to	120
"Seven Deadly Sin" releases	RISES BY	10	from	90	to	100
"Seven Deadly Sin" population	RISES BY	20	from	17530	to	17550
"Seven Deadly Sin" % of total population	falls by	.17%	from	33.91%	to	33.74%

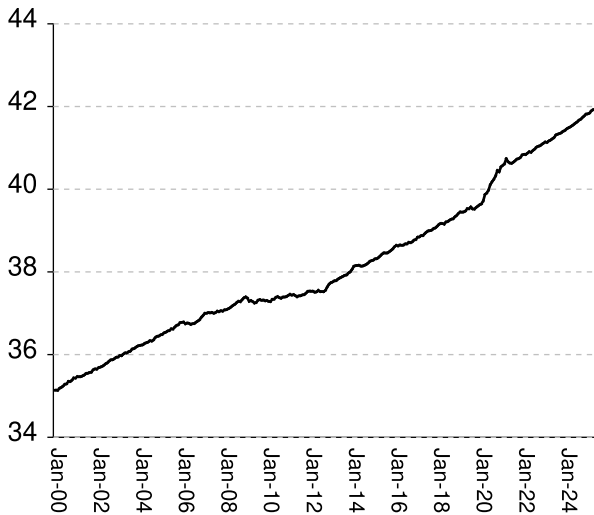
Inmate subpopulation counts and percentages, for the past 48 months										
Month	Methamphetamine						1st Incar Non-Violent		Seven Deadly Sins	
	Total Number	Total Percent	White Number	White Percent	Non White Number	Non White Percent	Number	Percent	Number	Percent
Aug-21	6774	14.52%	4956	73.16%	1834	27.07%	4889	10.48%	17038	36.52%
Sep-21	6844	14.63%	4997	73.01%	1854	27.09%	4924	10.53%	17036	36.42%
Oct-21	6866	14.67%	5012	73.00%	1861	27.10%	4921	10.51%	17002	36.33%
Nov-21	6933	14.78%	5065	73.06%	1884	27.17%	4975	10.60%	17007	36.25%
Dec-21	6952	14.77%	5072	72.96%	1887	27.14%	5018	10.66%	17025	36.18%
Jan-22	6877	14.73%	5026	73.08%	1887	27.44%	4963	10.63%	16969	36.34%
Feb-22	6904	14.77%	5049	73.13%	1913	27.71%	4980	10.66%	16968	36.31%
Mar-22	7029	14.92%	5084	72.33%	1952	27.77%	5084	10.79%	16997	36.08%
Apr-22	7050	14.94%	5097	72.30%	1960	27.80%	5125	10.86%	17006	36.04%
May-22	7092	15.01%	5122	72.22%	1994	28.12%	5107	10.81%	17025	36.04%
Jun-22	7216	15.13%	5197	72.02%	2028	28.10%	5200	10.91%	17087	35.84%
Jul-22	7250	15.17%	5207	71.82%	2050	28.28%	5197	10.87%	17076	35.72%
Aug-22	7305	15.27%	5262	72.03%	2073	28.38%	5233	10.94%	17072	35.70%
Sep-22	7335	15.31%	5243	71.48%	2098	28.60%	5219	10.89%	17100	35.69%
Oct-22	7343	15.32%	5272	71.80%	2102	28.63%	5248	10.95%	17090	35.66%
Nov-22	7380	15.31%	5319	72.07%	2104	28.51%	5275	10.94%	17132	35.54%
Dec-22	7413	15.28%	5314	71.68%	2105	28.40%	5334	10.99%	17155	35.36%
Jan-23	7469	15.36%	5347	71.59%	2142	28.68%	5350	11.00%	17154	35.27%
Feb-23	7531	15.42%	5381	71.45%	2170	28.81%	5375	11.01%	17199	35.22%
Mar-23	7613	15.49%	5432	71.35%	2187	28.73%	5464	11.12%	17221	35.04%
Apr-23	7604	15.47%	5435	71.48%	2175	28.60%	5469	11.13%	17215	35.02%
May-23	7475	15.27%	5340	71.44%	2165	28.96%	5334	10.90%	17250	35.24%
Jun-23	7482	15.20%	5316	71.05%	2172	29.03%	5321	10.81%	17299	35.15%
Jul-23	7550	15.29%	5378	71.23%	2213	29.31%	5372	10.88%	17321	35.09%
Aug-23	7572	15.31%	5347	70.62%	2230	29.45%	5390	10.90%	17341	35.07%
Sep-23	7573	15.26%	5342	70.54%	2235	29.51%	5422	10.93%	17359	34.99%
Oct-23	7672	15.36%	5412	70.54%	2273	29.63%	5511	11.03%	17370	34.78%
Nov-23	7752	15.38%	5456	70.38%	2300	29.67%	5601	11.11%	17403	34.52%
Dec-23	7737	15.34%	5446	70.39%	2295	29.66%	5583	11.07%	17409	34.51%
Jan-24	7725	15.30%	5435	70.36%	2317	29.99%	5598	11.09%	17399	34.47%
Feb-24	7738	15.31%	5416	69.99%	2325	30.05%	5585	11.05%	17433	34.48%
Mar-24	7725	15.23%	5384	69.70%	2344	30.34%	5591	11.02%	17445	34.39%
Apr-24	7762	15.22%	5392	69.47%	2384	30.71%	5611	11.00%	17513	34.33%
May-24	7815	15.26%	5403	69.14%	2415	30.90%	5665	11.07%	17537	34.25%
Jun-24	7792	15.20%	5388	69.15%	2407	30.89%	5647	11.02%	17527	34.20%
Jul-24	7772	15.16%	5362	68.99%	2435	31.33%	5635	10.99%	17518	34.17%
Aug-24	7763	15.14%	5334	68.71%	2431	31.32%	5645	11.01%	17498	34.12%
Sep-24	7782	15.19%	5340	68.62%	2443	31.39%	5644	11.02%	17495	34.15%
Oct-24	7801	15.17%	5359	68.70%	2442	31.30%	5656	11.00%	17513	34.06%
Nov-24	7768	15.12%	5329	68.60%	2439	31.40%	5648	10.99%	17514	34.09%
Dec-24	7777	15.13%	5321	68.42%	2456	31.58%	5636	10.96%	17505	34.04%
Jan-25	7733	15.08%	5282	68.30%	2451	31.70%	5582	10.88%	17479	34.08%
Feb-25	7818	15.17%	5310	67.92%	2508	32.08%	5606	10.88%	17491	33.95%
Mar-25	7778	15.08%	5268	67.73%	2521	32.41%	5616	10.89%	17480	33.89%
Apr-25	7689	14.94%	5186	67.45%	2538	33.01%	5581	10.84%	17481	33.96%
May-25	7668	14.87%	5124	66.82%	2544	33.18%	5575	10.81%	17509	33.94%
Jun-25	7666	14.83%	5117	66.75%	2576	33.60%	5584	10.80%	17530	33.91%
Jul-25	7705	14.81%	5118	66.42%	2587	33.58%	5655	10.87%	17550	33.74%



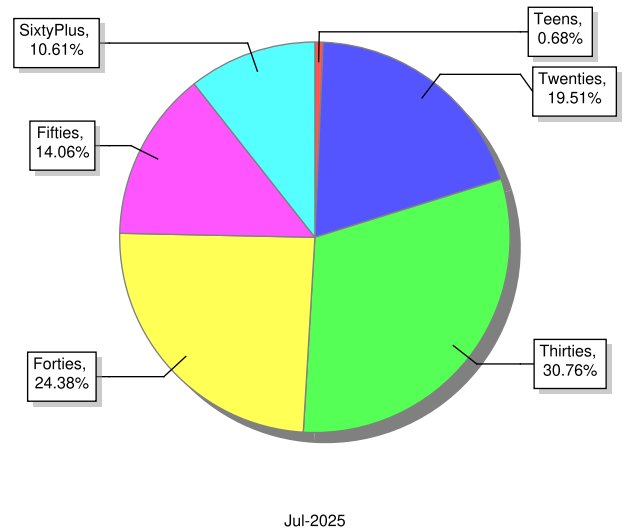
## Overview of inmate age statistics, Jan-2000 to Jul-2025

The "aging inmate population" is a concern in correctional systems throughout America, including Georgia. Here, the increase in inmate age is the result of several factors. Teenagers have been steered away from prison by increased usage of probation and other alternatives, at least for their first convictions. And there has been a surge of middle-aged male sex offenders due to the expanding "It's OK to tell" ethos. But most importantly, more severe sentence lengths and release policies have greatly increased the length of time that most offenders -- especially violent ones -- spend in prison, thereby increasing their average age.

### Average age since 2000



### Current Age

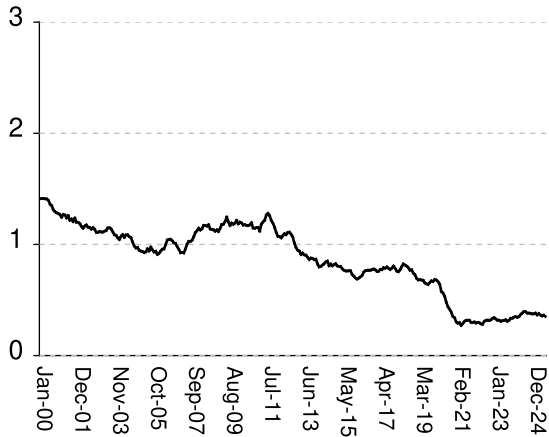


Average age of active inmates	RISES BY	.02	from	41.92	to	41.94
Number in their teens	falls by	10	from	362	to	352
Percentage in their teens	falls by	.02%	from	.7%	to	.68%
Number in their twenties	RISES BY	25	from	10,122	to	10,147
Percentage in their twenties	falls by	.07%	from	19.58%	to	19.51%
Number in their thirties	RISES BY	2	from	16,000	to	16,002
Percentage in their thirties	falls by	.19%	from	30.95%	to	30.76%
Number in their forties	RISES BY	107	from	12,574	to	12,681
Percentage in their forties	RISES BY	.06%	from	24.32%	to	24.38%
Number in their fifties	falls by	26	from	7,338	to	7,312
Percentage in their fifties	falls by	.13%	from	14.19%	to	14.06%
Number age sixty and up	RISES BY	42	from	5,479	to	5,521
Percentage age sixty and up	RISES BY	.01%	from	10.6%	to	10.61%

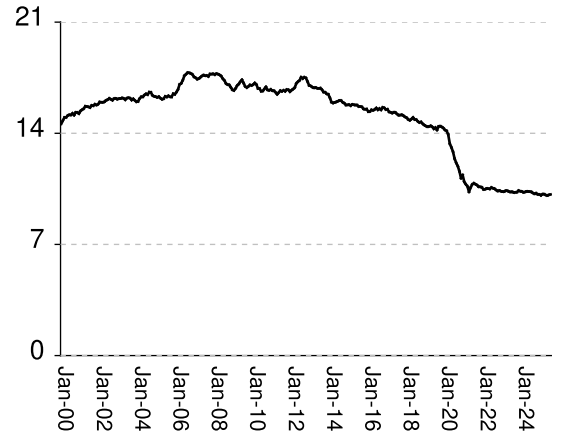
# Monthly counts of inmates by age group, Jan-2000 to Jul-2025

Y-axis of Twenties/Thirties/Forties/Fifties runs from 0 to 21,000. Y-axis of Teens/Sixty+ runs from 0 to 3,000.

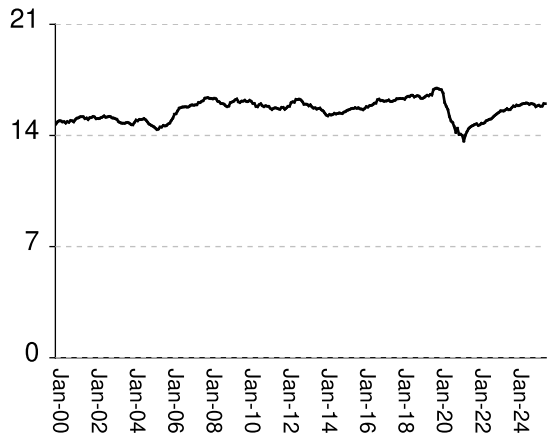
## Teens x 1000



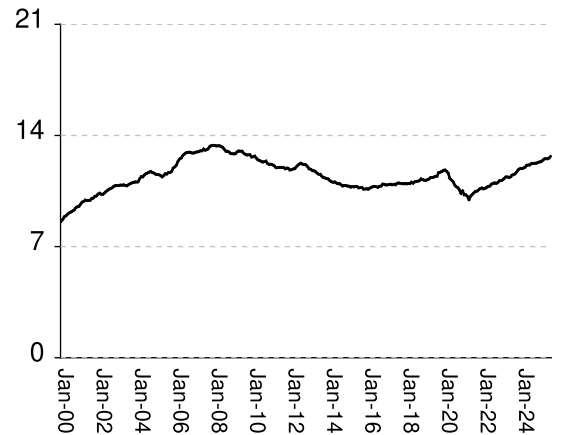
## Twenties x 1000



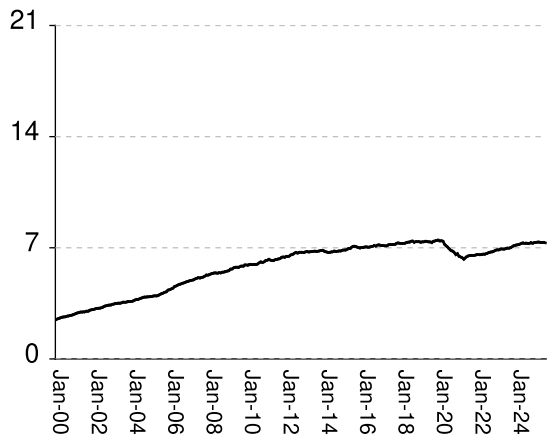
## Thirties x 1000



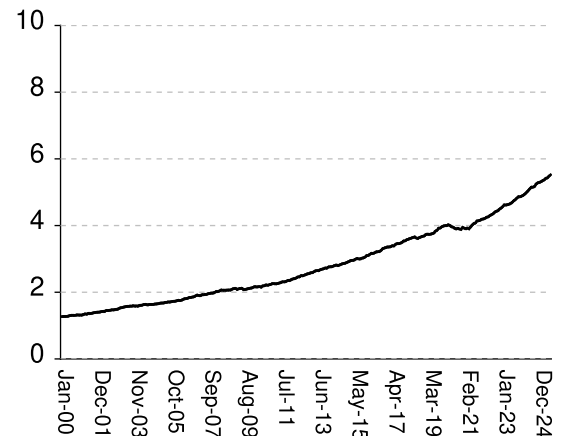
## Forties x 1000



## Fifties x 1000



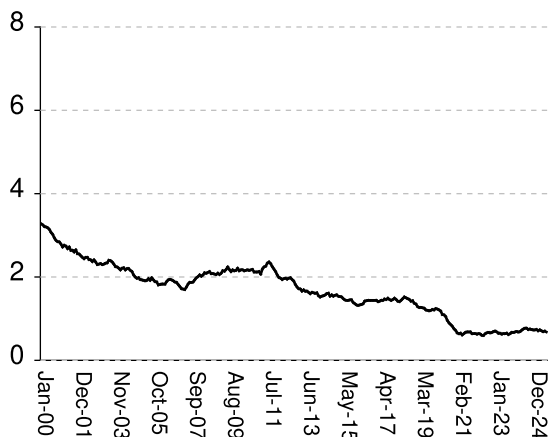
## Sixty & Up x 1000



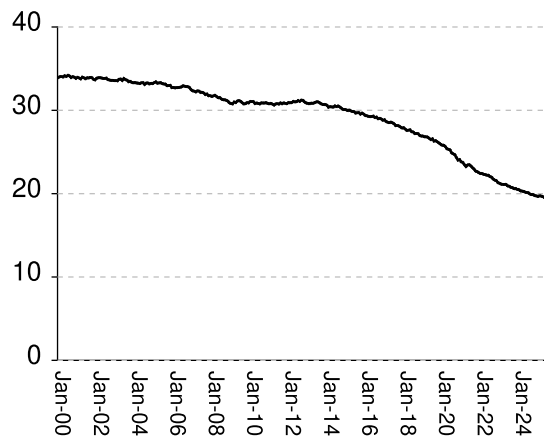
# Monthly percentages of inmates by age group, Jan-2000 to Jul-2025

Y-axis of Twenties/Thirties/Forties/Fifties runs from 0% to 40%. Y-axis of Teens/Sixty+ runs from 0% to 8%

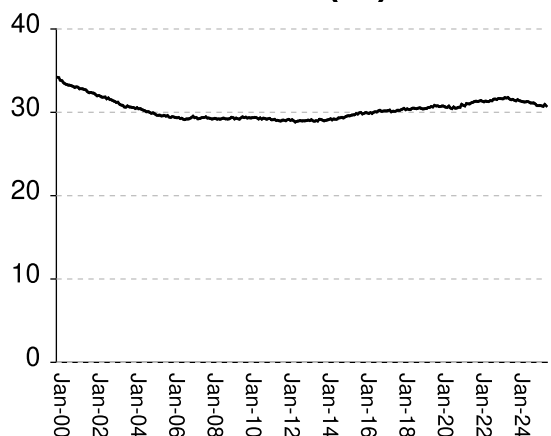
## Teens (%)



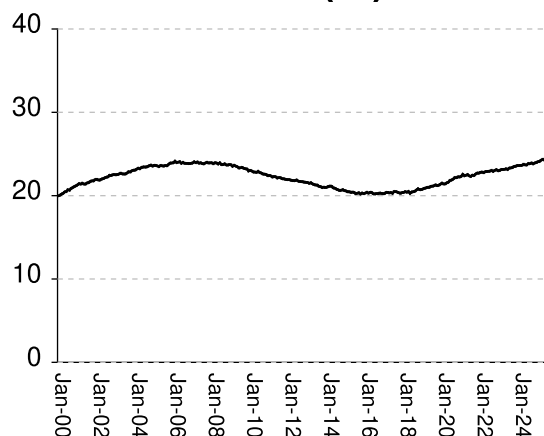
## Twenties (%)



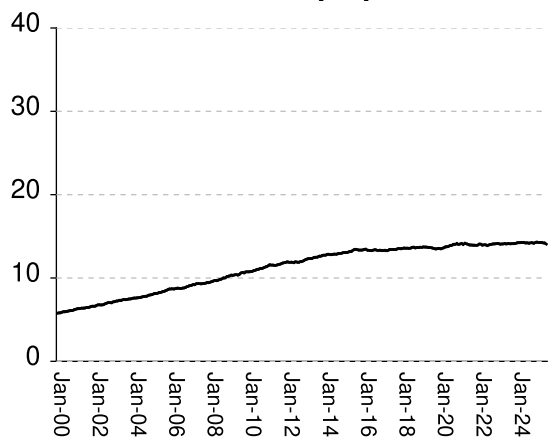
## Thirties (%)



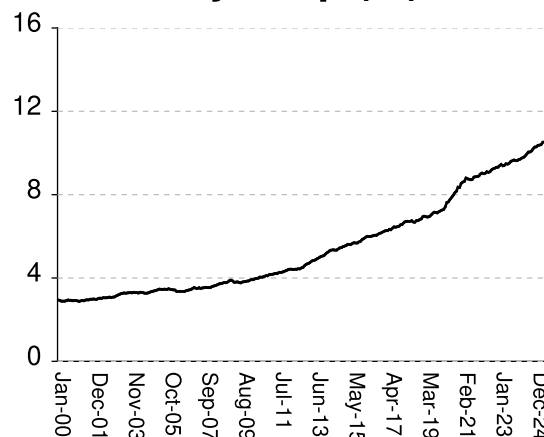
## Forties (%)



## Fifties (%)



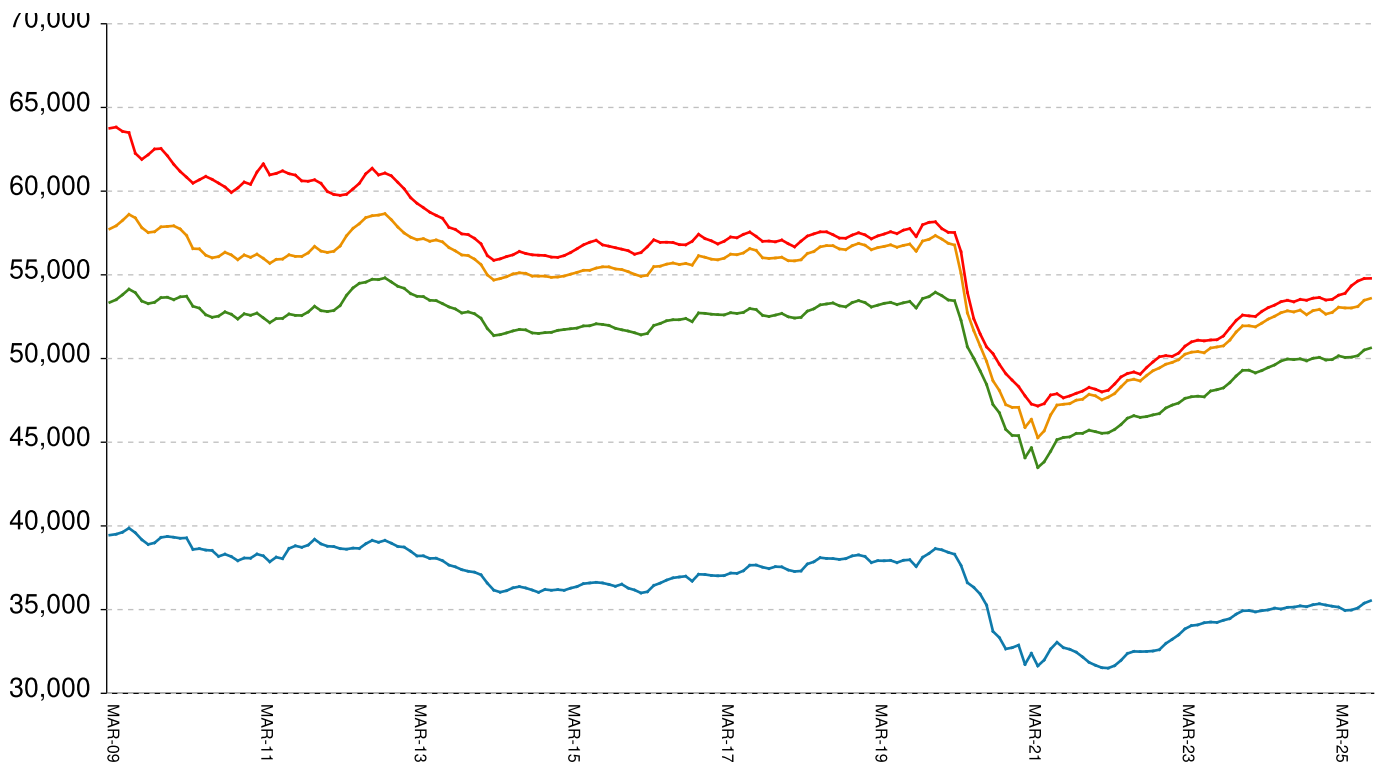
## Sixty & Up (%)



Inmate counts & percentages by age, for past 48 months													
Month	Avg Age	Teens		Twenties		Thirties		Forties		Fifties		Sixty & Up	
		Num-ber	Per-cent	Num-ber	Per-cent	Num-ber	Per-cent	Num-ber	Per-cent	Num-ber	Per-cent	Num-ber	Per-cent
Aug-21	40.65	318	0.68%	10794	23.13%	14526	31.13%	10469	22.44%	6511	13.96%	4080	8.74%
Sep-21	40.69	317	0.68%	10736	22.95%	14594	31.20%	10493	22.43%	6520	13.94%	4135	8.84%
Oct-21	40.73	299	0.64%	10636	22.72%	14643	31.29%	10573	22.59%	6524	13.94%	4145	8.86%
Nov-21	40.74	299	0.64%	10624	22.64%	14701	31.33%	10650	22.70%	6532	13.92%	4161	8.87%
Dec-21	40.77	302	0.64%	10595	22.52%	14730	31.30%	10687	22.71%	6564	13.95%	4189	8.90%
Jan-22	40.83	293	0.63%	10472	22.43%	14636	31.35%	10641	22.79%	6567	14.06%	4198	8.99%
Feb-22	40.84	298	0.64%	10474	22.41%	14672	31.40%	10666	22.82%	6564	14.05%	4218	9.03%
Mar-22	40.84	295	0.63%	10521	22.33%	14763	31.33%	10729	22.77%	6574	13.95%	4247	9.01%
Apr-22	40.87	285	0.60%	10513	22.28%	14757	31.27%	10785	22.86%	6597	13.98%	4262	9.03%
May-22	40.91	282	0.60%	10498	22.22%	14808	31.34%	10818	22.90%	6598	13.97%	4298	9.10%
Jun-22	40.89	307	0.64%	10584	22.20%	14923	31.30%	10928	22.92%	6629	13.90%	4325	9.07%
Jul-22	40.94	316	0.66%	10539	22.05%	14966	31.31%	10970	22.95%	6671	13.96%	4353	9.11%
Aug-22	40.97	319	0.67%	10507	21.97%	15016	31.40%	11011	23.02%	6707	14.02%	4394	9.19%
Sep-22	41.01	316	0.66%	10425	21.76%	15039	31.39%	10982	22.92%	6735	14.06%	4426	9.24%
Oct-22	41.04	322	0.67%	10367	21.63%	15125	31.56%	11036	23.03%	6750	14.09%	4444	9.27%
Nov-22	41.05	334	0.69%	10390	21.55%	15226	31.59%	11138	23.11%	6797	14.10%	4489	9.31%
Dec-22	41.08	341	0.70%	10351	21.33%	15309	31.55%	11160	23.00%	6849	14.12%	4522	9.32%
Jan-23	41.11	329	0.68%	10328	21.24%	15389	31.64%	11199	23.03%	6868	14.12%	4565	9.39%
Feb-23	41.14	318	0.65%	10330	21.15%	15457	31.65%	11290	23.12%	6872	14.07%	4616	9.45%
Mar-23	41.13	318	0.65%	10383	21.12%	15545	31.63%	11378	23.15%	6921	14.08%	4617	9.39%
Apr-23	41.17	308	0.63%	10375	21.11%	15546	31.63%	11386	23.16%	6925	14.09%	4625	9.41%
May-23	41.19	314	0.64%	10330	21.10%	15547	31.76%	11361	23.21%	6917	14.13%	4640	9.48%
Jun-23	41.22	315	0.64%	10303	20.94%	15612	31.72%	11392	23.15%	6936	14.09%	4662	9.47%
Jul-23	41.25	322	0.65%	10313	20.89%	15684	31.77%	11503	23.30%	6975	14.13%	4697	9.51%
Aug-23	41.31	308	0.62%	10269	20.77%	15624	31.60%	11538	23.33%	6976	14.11%	4743	9.59%
Sep-23	41.33	318	0.64%	10283	20.72%	15641	31.52%	11603	23.38%	7001	14.11%	4779	9.63%
Oct-23	41.35	335	0.67%	10295	20.61%	15752	31.54%	11730	23.49%	7051	14.12%	4826	9.66%
Nov-23	41.36	336	0.67%	10389	20.61%	15853	31.45%	11860	23.53%	7118	14.12%	4862	9.64%
Dec-23	41.4	345	0.68%	10353	20.52%	15832	31.39%	11906	23.60%	7149	14.17%	4865	9.64%
Jan-24	41.42	350	0.69%	10336	20.48%	15909	31.52%	11918	23.61%	7180	14.23%	4886	9.68%
Feb-24	41.46	344	0.68%	10287	20.35%	15880	31.41%	11948	23.63%	7192	14.23%	4911	9.71%
Mar-24	41.48	351	0.69%	10301	20.31%	15901	31.35%	11996	23.65%	7229	14.25%	4949	9.76%
Apr-24	41.5	369	0.72%	10339	20.27%	15960	31.29%	12113	23.75%	7271	14.25%	4995	9.79%
May-24	41.53	382	0.75%	10336	20.19%	15998	31.25%	12136	23.70%	7303	14.26%	5046	9.86%
Jun-24	41.56	395	0.77%	10322	20.14%	16014	31.25%	12144	23.70%	7278	14.20%	5101	9.95%
Jul-24	41.6	394	0.77%	10307	20.10%	16041	31.29%	12223	23.84%	7290	14.22%	5148	10.04%
Aug-24	41.63	382	0.74%	10238	19.96%	16021	31.24%	12228	23.84%	7271	14.18%	5153	10.05%
Sep-24	41.67	382	0.75%	10192	19.89%	15956	31.14%	12250	23.91%	7282	14.21%	5176	10.10%
Oct-24	41.69	380	0.74%	10222	19.88%	16001	31.12%	12255	23.83%	7319	14.23%	5243	10.20%
Nov-24	41.73	375	0.73%	10156	19.77%	15988	31.12%	12288	23.92%	7285	14.18%	5279	10.28%
Dec-24	41.77	376	0.73%	10147	19.73%	15946	31.01%	12332	23.98%	7323	14.24%	5295	10.30%
Jan-25	41.82	382	0.74%	10094	19.68%	15813	30.84%	12346	24.07%	7333	14.30%	5315	10.36%
Feb-25	41.82	366	0.71%	10163	19.73%	15869	30.80%	12426	24.12%	7353	14.27%	5346	10.38%
Mar-25	41.84	378	0.73%	10164	19.71%	15897	30.82%	12511	24.26%	7356	14.26%	5371	10.41%
Apr-25	41.89	364	0.71%	10111	19.64%	15837	30.77%	12536	24.35%	7334	14.25%	5412	10.51%
May-25	41.92	357	0.69%	10083	19.55%	15850	30.73%	12531	24.29%	7328	14.21%	5433	10.53%
Jun-25	41.92	362	0.70%	10122	19.58%	16000	30.95%	12574	24.32%	7338	14.19%	5479	10.60%
Jul-25	41.94	352	0.68%	10147	19.51%	16002	30.76%	12681	24.38%	7312	14.06%	5521	10.61%

# All housed offenders under GDC jurisdiction

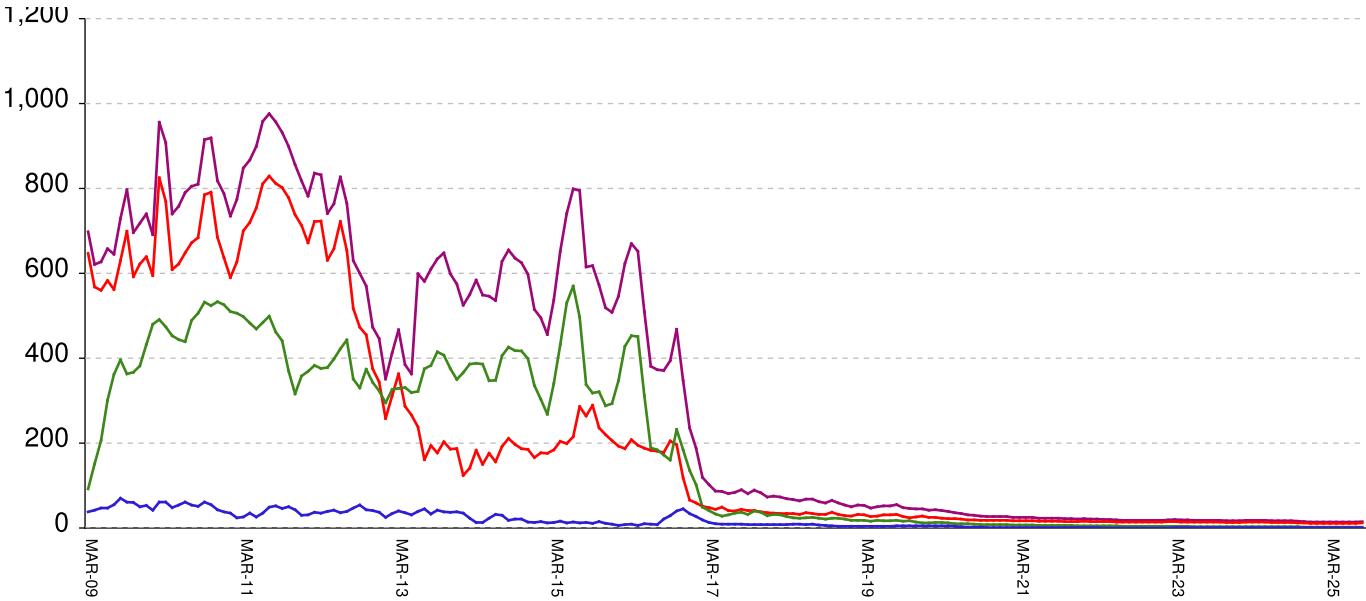
March 20, 2009 through August 29, 2025



<b>All in bed + probs in jail + backlog</b>	<b>RISES BY</b>	<b>44</b>	<b>from</b>	<b>54,814</b>	<b>to</b>	<b>54,858</b>
Probationers in jail	...	...	...	15	at	15
Inmate jail backlog	RISES BY	4	from	1,204	to	1,208
<b>All in beds: inmate + Prob + parole</b>	<b>RISES BY</b>	<b>40</b>	<b>from</b>	<b>53,595</b>	<b>to</b>	<b>53,635</b>
Total probationers in beds	RISES BY	11	from	2,941	to	2,952
Probation detention centers	falls by	2	from	1,463	to	1,461
Probation boot camps	falls by	...	from		to	
Probation RSAT	RISES BY	13	from	1,478	to	1,491
Parole revocation centers	falls by	...	from		to	
<b>All in inmate beds: state + other</b>	<b>RISES BY</b>	<b>29</b>	<b>from</b>	<b>50,654</b>	<b>to</b>	<b>50,683</b>
Other inmate facilities:	falls by	8	from	15,115	to	15,107
Inmate boot camps	...	...	...	0	at	0
Private prisons	...	...	...	8,041	at	8,041
County prisons	RISES BY	4	from	4,348	to	4,352
Transitional centers	falls by	12	from	2,726	to	2,714
<b>In state prisons only</b>	<b>RISES BY</b>	<b>37</b>	<b>from</b>	<b>35,539</b>	<b>to</b>	<b>35,576</b>

# Probationers in jail awaiting placement in facilities

March 20, 2009 through August 29, 2025



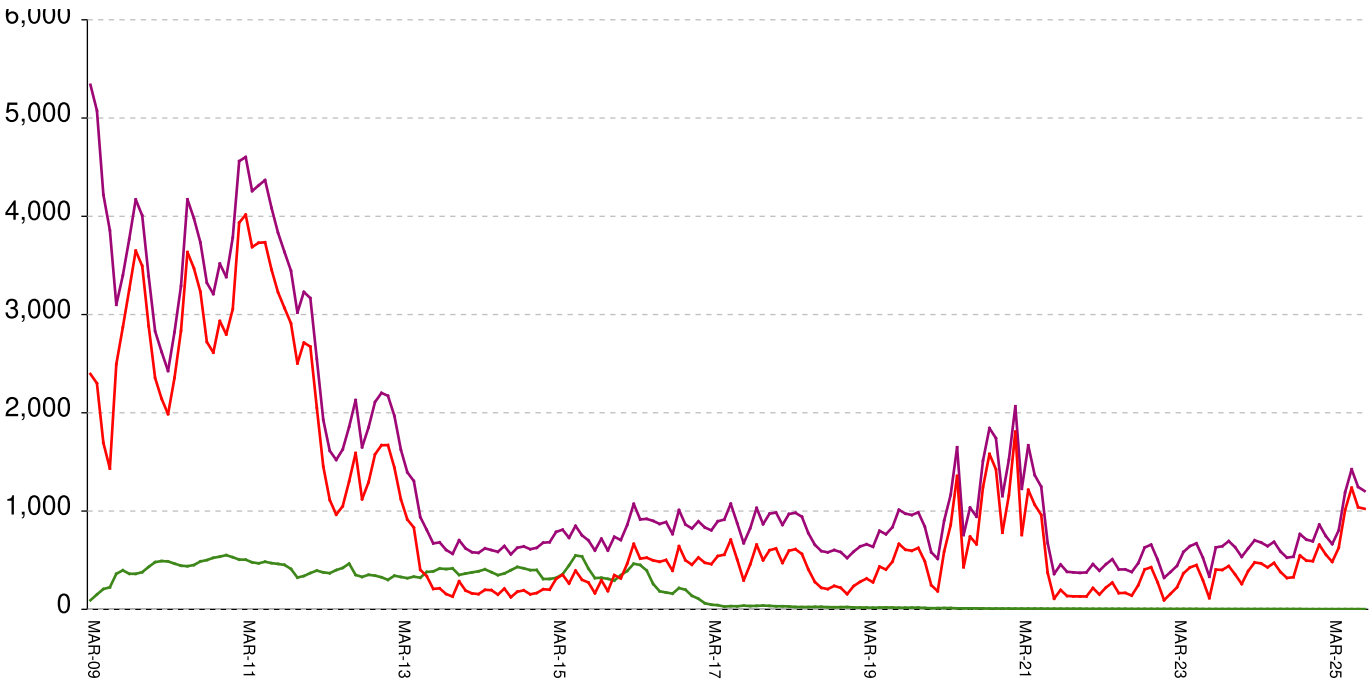
This graph shows, for each Friday since March 20 2009, the number of sentenced felony probationers who were waiting in jail for placement in facilities that GDC operates for housing probationers -- detention centers, probation residential substance abuse treatment (RSAT) centers, and probation boot camps. Counts include both those offenders sentenced directly from court, and those whose street probation was revoked.

Total probationers waiting in jail	...	...	...	level	at	15
...waiting for detention centers	...	...	...	level	at	12
...waiting for probation RSAT	...	...	...	level	at	2
...waiting for probation boot camps	...	...	...	level	at	1

The highest number of probationers waiting in jail was	994	on	05-MAR-10
...highest number waiting for detention centers was	859	on	05-MAR-10
...highest number waiting for probation RSAT was	592	on	10-JUL-15
...highest number waiting for probation boot camps was	70	on	18-SEP-09

# State inmates in jail awaiting placement in facilities

March 20, 2009 through August 29, 2025



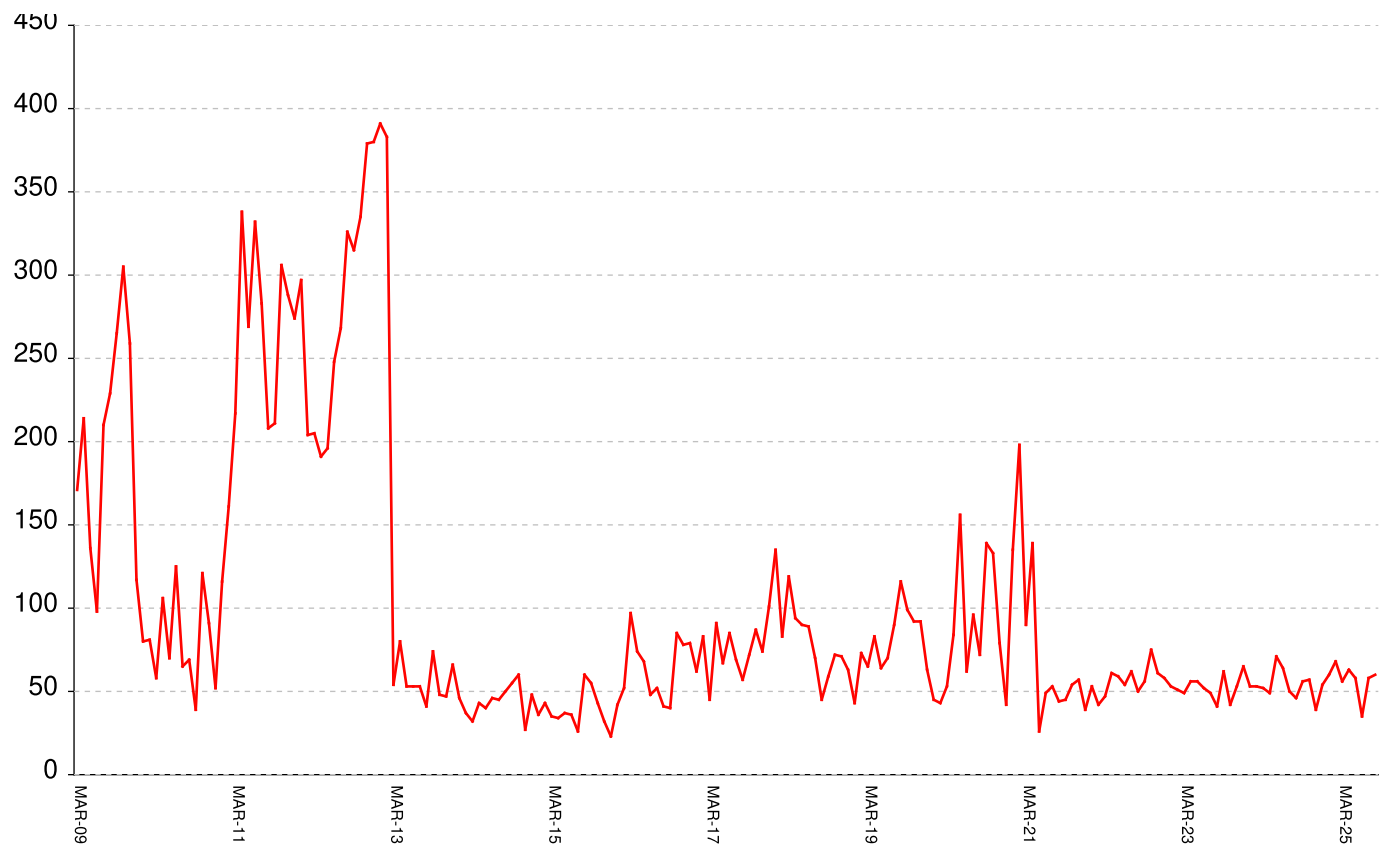
This graph shows, for each Friday since March 2009, the number of prisoners, probationers, and parolees in local jails who have been sentenced or revoked to state prison and whose documents have been received and verified by GDC. Most are almost immediately assigned to a diagnostic center, and are designated as in "admission processing". Of those a few hundred may be in the "transportation delayed" category because there is no room in the assigned diagnostic center, or because the inmate is being held for medical reasons, or for other court proceedings, or other reasons. Those remaining are "ready to be picked up".

Total state inmates waiting in jail	RISES BY 4	from 1204	to 1208
... not yet assigned to a diagnostic center	falls by 2	from 10	to 8
... total "in admission processing"	RISES BY 6	from 1194	to 1200
... with "transportation delayed"	RISES BY 4	from 171	to 175
... ready to be picked up	RISES BY 2	from 1023	to 1025

The highest number of state inmates waiting in jail was	5338	on	27-MAR-09
... highest number not asg to a diagnostic center was	2881	on	12-JUN-09
... highest number in admission processing was	4916	on	25-MAR-11
... highest number with transportation delayed was	645	on	14-JAN-11
... highest number ready to be pickup was	4435	on	25-MAR-11

# Female state inmates in jail awaiting pickup

March 20, 2009 through August 29, 2025



This graph shows, for each Friday since March 2009, the number of female state prisoners in local jails who were assigned to diagnostic centers but had not yet been picked up.

Female state inmates in jails waiting picked up      RISES BY      5      from      60      to      65

The highest number of female inmates waiting in jail was      424    on    01-FEB-13

The lowest number of female inmates waiting in jail was      17    on    20-MAR-20



Summary of housed prisoners, parolees, and probationers									
Week Ending	Prison	Parole	Probation			Prison+parole+probation	Jail		Total
	Total inmates	Revocation centers	Prob RSAT	Boot camp	Detention		Inmate backlog	Probationers	Prison+parole+probation+jail
06-Sep-2024	49948		1452		1456	52856	549	17	53422
13-Sep-2024	49996		1457		1449	52902	535	17	53454
20-Sep-2024	50025		1467		1428	52920	660	17	53597
27-Sep-2024	49948		1515		1424	52887	755	17	53659
04-Oct-2024	49700		1465		1324	52489	989	17	53495
11-Oct-2024	49904		1490		1297	52691	857	16	53564
18-Oct-2024	49937		1494		1257	52688	769	16	53473
25-Oct-2024	49914		1461		1245	52620	766	16	53402
01-Nov-2024	49982		1487		1290	52759	760	16	53535
08-Nov-2024	49986		1504		1307	52797	724	15	53536
15-Nov-2024	50025		1480		1374	52879	710	15	53604
22-Nov-2024	50076		1484		1384	52944	710	15	53669
29-Nov-2024	50000		1511		1405	52916	751	15	53682
06-Dec-2024	50030		1493		1392	52915	688	14	53617
13-Dec-2024	50065		1466		1387	52918	711	14	53643
20-Dec-2024	50089		1505		1370	52964	692	14	53670
27-Dec-2024	50093		1487		1357	52937	702	14	53653
03-Jan-2025	50009		1474		1349	52832	794	14	53640
10-Jan-2025	49957		1478		1312	52747	778	14	53539
17-Jan-2025	50011		1456		1309	52776	752	14	53542
24-Jan-2025	49767		1407		1212	52386	957	14	53357
31-Jan-2025	49828		1453		1244	52525	862	14	53401
07-Feb-2025	49842		1474		1280	52596	828	14	53438
14-Feb-2025	49917		1494		1305	52716	746	14	53476
21-Feb-2025	49977		1475		1354	52806	778	14	53598
28-Feb-2025	50043		1464		1396	52903	718	14	53635
07-Mar-2025	50081		1449		1390	52920	679	14	53613
14-Mar-2025	50181		1476		1428	53085	664	14	53763
21-Mar-2025	50155		1474		1456	53085	703	14	53802
28-Mar-2025	50212		1477		1471	53160	775	14	53949
04-Apr-2025	50155		1483		1488	53126	772	14	53912
11-Apr-2025	50044		1473		1496	53013	804	14	53831
18-Apr-2025	50040		1449		1489	52978	895	14	53887
25-Apr-2025	50035		1454		1486	52975	962	14	53951
02-May-2025	50070		1461		1501	53032	1094	14	54140
09-May-2025	49969		1446		1504	52919	1192	14	54125
16-May-2025	50043		1435		1473	52951	1355	14	54320
23-May-2025	50107		1428		1501	53036	1453	14	54503
30-May-2025	50224		1437		1509	53170	1477	14	54661
06-Jun-2025	50133		1455		1482	53070	1520	14	54604
13-Jun-2025	50139		1440		1487	53066	1524	14	54604
20-Jun-2025	50045		1425		1525	52995	1543	14	54552
27-Jun-2025	50363		1438		1512	53313	1425	14	54752
04-Jul-2025	50404		1450		1516	53370	1394	14	54778
11-Jul-2025	50529		1433		1531	53493	1191	14	54698
18-Jul-2025	50525		1462		1492	53479	1246	14	54739
25-Jul-2025	50570		1485		1514	53569	1318	14	54901
01-Aug-2025	50604		1492		1499	53595	1266	14	54875
08-Aug-2025	50586		1483		1482	53551	1112	14	54677
15-Aug-2025	50624		1487		1483	53594	1113	14	54721
22-Aug-2025	50654		1478		1463	53595	1204	15	54814
29-Aug-2025	50683		1491		1461	53635	1208	15	54858

## Offenders housed in facilities for state prisoners

Week ending	In state prisons	In facilities other than state prisons						Total Inmates
		Transition centers	County prisons	Pre-rel centers	Private prisons	Inmate boot camps	Total others	
06-Sep-2024	35195	2716	4508		7528	1	14753	49948
13-Sep-2024	35217	2752	4493		7533	1	14779	49996
20-Sep-2024	35238	2746	4506		7534	1	14787	50025
27-Sep-2024	35230	2724	4475		7518	1	14718	49948
04-Oct-2024	35111	2663	4437		7488	1	14589	49700
11-Oct-2024	35197	2679	4493		7534	1	14707	49904
18-Oct-2024	35211	2739	4469		7517	1	14726	49937
25-Oct-2024	35182	2745	4466		7520	1	14732	49914
01-Nov-2024	35239	2765	4442		7535	1	14743	49982
08-Nov-2024	35246	2756	4434		7549	1	14740	49986
15-Nov-2024	35323	2747	4403		7551	1	14702	50025
22-Nov-2024	35354	2755	4428		7538	1	14722	50076
29-Nov-2024	35292	2750	4431		7526	1	14708	50000
06-Dec-2024	35285	2756	4451		7537	1	14745	50030
13-Dec-2024	35339	2763	4429		7533	1	14726	50065
20-Dec-2024	35382	2755	4417		7534	1	14707	50089
27-Dec-2024	35380	2734	4433		7545	1	14713	50093
03-Jan-2025	35335	2721	4419		7533	1	14674	50009
10-Jan-2025	35311	2691	4428		7526	1	14646	49957
17-Jan-2025	35313	2677	4467		7553	1	14698	50011
24-Jan-2025	35190	2631	4416		7529	1	14577	49767
31-Jan-2025	35220	2660	4419		7528	1	14608	49828
07-Feb-2025	35212	2646	4438		7545	1	14630	49842
14-Feb-2025	35219	2641	4451		7605	1	14698	49917
21-Feb-2025	35197	2629	4488		7662	1	14780	49977
28-Feb-2025	35183	2622	4500		7737	1	14860	50043
07-Mar-2025	35161	2624	4515		7780	1	14920	50081
14-Mar-2025	35187	2617	4528		7848	1	14994	50181
21-Mar-2025	35144	2608	4487		7915	1	15011	50155
28-Mar-2025	35103	2612	4520		7976	1	15109	50212
04-Apr-2025	35047	2599	4524		7984	1	15108	50155
11-Apr-2025	34951	2596	4501		7995	1	15093	50044
18-Apr-2025	34906	2591	4515		8027	1	15134	50040
25-Apr-2025	34904	2590	4522		8018	1	15131	50035
02-May-2025	34954	2567	4511		8037	1	15116	50070
09-May-2025	34900	2544	4495		8029	1	15069	49969
16-May-2025	34954	2554	4502		8032	1	15089	50043
23-May-2025	35001	2577	4501		8028	0	15106	50107
30-May-2025	35065	2605	4511		8043	0	15159	50224
06-Jun-2025	35068	2587	4440		8038	0	15065	50133
13-Jun-2025	35092	2599	4416		8032	0	15047	50139
20-Jun-2025	35027	2590	4442		7986	0	15018	50045
27-Jun-2025	35203	2645	4483		8032	0	15160	50363
04-Jul-2025	35284	2652	4430		8038	0	15120	50404
11-Jul-2025	35380	2669	4436		8044	0	15149	50529
18-Jul-2025	35399	2690	4400		8036	0	15126	50525
25-Jul-2025	35464	2698	4363		8045	0	15106	50570
01-Aug-2025	35516	2709	4347		8032	0	15088	50604
08-Aug-2025	35507	2698	4347		8034	0	15079	50586
15-Aug-2025	35522	2714	4349		8039	0	15102	50624
22-Aug-2025	35539	2726	4348		8041	0	15115	50654
29-Aug-2025	35576	2714	4352		8041	0	15107	50683

Offenders waiting in local jails for state facilities										
	Probationers waiting in jail				Probationers waiting in jail					
Week ending	.. for PDCs	.. for RSAT	.. for boot camps	Total	Total backlog	Not yet assigned	In adm process	Delayed transport	Ready for pickup	Assigned females
06-Sep-2024	13	3	1	17	549	25	524	182	342	59
13-Sep-2024	13	3	1	17	535	25	510	183	327	56
20-Sep-2024	13	3	1	17	660	26	634	182	452	84
27-Sep-2024	13	3	1	17	755	27	728	184	544	52
04-Oct-2024	13	3	1	17	989	25	964	183	781	79
11-Oct-2024	12	3	1	16	857	26	831	185	646	69
18-Oct-2024	12	3	1	16	769	25	744	188	556	57
25-Oct-2024	12	3	1	16	766	26	740	192	548	57
01-Nov-2024	12	3	1	16	760	25	735	186	549	69
08-Nov-2024	12	2	1	15	724	25	699	189	510	53
15-Nov-2024	12	2	1	15	710	25	685	187	498	53
22-Nov-2024	12	2	1	15	710	24	686	190	496	39
29-Nov-2024	12	2	1	15	751	24	727	187	540	43
06-Dec-2024	11	2	1	14	688	24	664	188	476	48
13-Dec-2024	11	2	1	14	711	21	690	184	506	57
20-Dec-2024	11	2	1	14	692	22	670	180	490	54
27-Dec-2024	11	2	1	14	702	23	679	178	501	41
03-Jan-2025	11	2	1	14	794	22	772	179	593	47
10-Jan-2025	11	2	1	14	778	22	756	180	576	46
17-Jan-2025	11	2	1	14	752	22	730	182	548	53
24-Jan-2025	11	2	1	14	957	20	937	182	755	78
31-Jan-2025	11	2	1	14	862	21	841	184	657	60
07-Feb-2025	11	2	1	14	828	9	819	180	639	73
14-Feb-2025	11	2	1	14	746	8	738	180	558	68
21-Feb-2025	11	2	1	14	778	7	771	181	590	52
28-Feb-2025	11	2	1	14	718	6	712	180	532	58
07-Mar-2025	11	2	1	14	679	6	673	178	495	56
14-Mar-2025	11	2	1	14	664	6	658	175	483	56
21-Mar-2025	11	2	1	14	703	8	695	173	522	38
28-Mar-2025	11	2	1	14	775	9	766	173	593	55
04-Apr-2025	11	2	1	14	772	9	763	171	592	42
11-Apr-2025	11	2	1	14	804	9	795	169	626	63
18-Apr-2025	11	2	1	14	895	10	885	168	717	50
25-Apr-2025	11	2	1	14	962	9	953	162	791	54
02-May-2025	11	2	1	14	1094	9	1085	168	917	49
09-May-2025	11	2	1	14	1192	9	1183	171	1012	58
16-May-2025	11	2	1	14	1355	8	1347	178	1169	62
23-May-2025	11	2	1	14	1453	8	1445	181	1264	69
30-May-2025	11	2	1	14	1477	9	1468	184	1284	58
06-Jun-2025	11	2	1	14	1520	8	1512	176	1336	65
13-Jun-2025	11	2	1	14	1524	8	1516	172	1344	52
20-Jun-2025	11	2	1	14	1543	9	1534	179	1355	46
27-Jun-2025	11	2	1	14	1425	9	1416	179	1237	35
04-Jul-2025	11	2	1	14	1394	9	1385	202	1183	53
11-Jul-2025	11	2	1	14	1191	9	1182	201	981	50
18-Jul-2025	11	2	1	14	1246	9	1237	198	1039	58
25-Jul-2025	11	2	1	14	1318	9	1309	203	1106	70
01-Aug-2025	11	2	1	14	1266	9	1257	192	1065	59
08-Aug-2025	11	2	1	14	1112	11	1101	177	924	40
15-Aug-2025	11	2	1	14	1113	10	1103	174	929	51
22-Aug-2025	12	2	1	15	1204	10	1194	171	1023	60
29-Aug-2025	12	2	1	15	1208	8	1200	175	1025	65