

Friday Report - overview and contents

The pages in The Friday Report are about adult offenders in Georgia's prisons and jails. They contain statistical snapshots and trends in the populations and movements of offenders in the state prison system, on probation, on parole, and in local jails. Information comes from databases of the Georgia Department of Corrections (GDC) and the Board of Pardons and Paroles, and from data provided by local jailers. Information is summarized into tables in the GDC/Parole Data Warehouse, and is extracted into these pages each Friday. Pages are organized according to the table that supplied the data.

The Monthly Research Table , named "MO_RESRCH" or simply "MO", contains data about state prisoners, grouped into statistically interesting categories. The table contains one record per month, from January 2000 to the present. Despite its being "monthly", it is updated weekly, because some data trickles in for several weeks before it becomes stable history.	
Page	Content
MO-01	Clemencies and maxouts. Monthly graph from 2000 to present shows the monthly departures from prison via actions by the Georgia Parole Board (clemencies), and via service of 100% of the court ordered sentence (maxouts)
MO-02	48 months of releases. Table shows counts and percentages of releases via clemencies and maxouts, with and without probation to follow, for each of the past 48 months.
MO-03	Methamphetamine. Monthly graph from 2000 to present shows admissions, departures, population, and percent of population of inmates with a current offense of methamphetamine possession, sale, manufacturing, or trafficking, and the changing racial composition of the methamphetamine population
MO-04	Non-violent first incarcerants. Monthly graph from 2000 to present shows admissions, departures, population, and percent of population of inmates without violent or sex crimes, who are serving their first Georgia felony incarceration.
MO-05	Seven Deadly Sins. Monthly graph from 2000 to present shows admissions, departures, population, and percent of population of inmates convicted of kidnapping, armed robbery, rape, aggravated sodomy, aggravated sexual battery, and aggravated child molestation, for whom especially severe penalties are prescribed.
MO-06	48 months of inmate subpopulations. Table shows number and percentage of white and non-white inmates with methamphetamine offenses, and non-violent first incarcerants, and inmates convicted of the Seven Deadly Sins.
MO-07	Inmate age overview. Line graph shows the average age of the inmate population, by month from 2000 to the present. Pie chart shows the number of currently active inmates in their teens, twenties, thirties, forties, fifties, and age sixty+.
MO-08	Counts by age group. Graphs show the count, by month from 2000 to the present, of inmates in their teens, twenties, thirties, forties, fifties, and age sixty+.
MO-09	Percentages by age group. Graphs show the percentages, by month from 2000 to the present, of inmates in their teens, twenties, thirties, forties, fifties, and age sixty+.
MO-10	48 months of inmate ages. Table shows average age of the standing population, and counts and percentages of teens, twenties, thirties, forties, fifties, and sixty+, for each of the past 48 months.

Friday Report - overview and contents (continued)

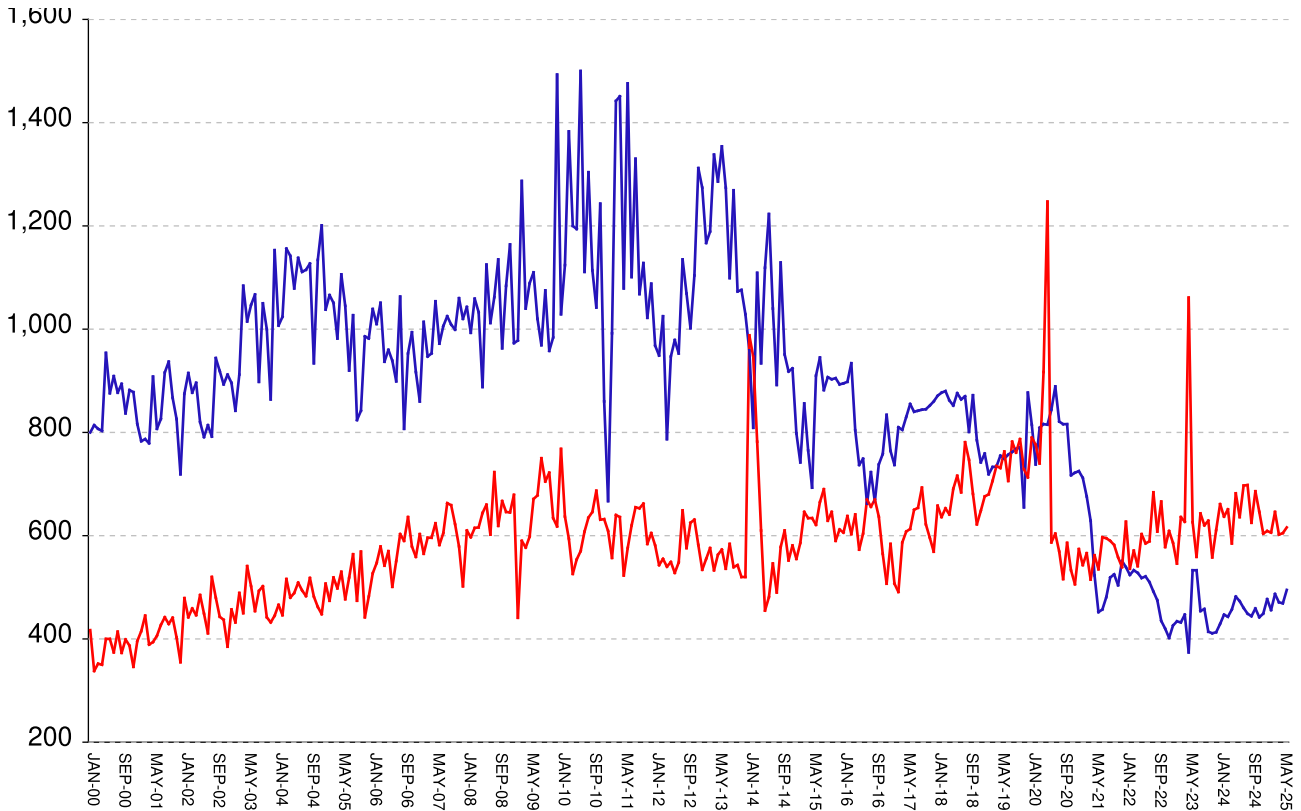
The MSR Table is based on the Management Summary Report (MSR), a snapshot report posted each week in GDC's Scribe database. MSR_RESRCH gathers that data into weekly trends, with one record for each Friday since March 20th, 2009

Page	Content
MSR-01	All housed offenders. Weekly graph from March 20, 2009 to present, showing counts of inmates in state prisons, transitional centers, county prisons, private prisons, inmate boot camps, parole revocation centers, probation Residential Substance Abuse Treatment (RSAT), probation boot camps, probation detention centers, plus the inmate jail backlog and probationers in jail waiting for state facilities.
MSR-02	Probationers in jail. Weekly graph from March 20, 2009 to present, showing counts of probationers in local jails awaiting placement in probation detention centers, probation RSAT centers, and probation boot camps.
MSR-03	State inmates in jail. Weekly graph from March 20, 2009 to present, showing counts of state inmates in local jails awaiting placement in state prison facilities – including those who have not yet been assigned to a diagnostic center, those whose transportation has been delayed for some reason, and those who are ready to be picked up.
MSR-04	Female state inmates in jail. Weekly graph from March 20, 2009 to present, showing counts of female state inmates awaiting placement in a state prison for females.
MSR-05	52-week table: housed offenders. Data for each of the past 52 weeks, showing total prison inmates, parolees in revocation centers, probationers in RSAT/boot camp/detention centers, inmate jail backlog, probationers in jail waiting for facilities, with subtotals.
MSR-06	52-week table: state prisoners. Data for each of the past 52 weeks, showing inmates in state prisons, transition centers, county prisons, pre-release centers, private prisons, and inmate boot camps, with subtotals.
MSR-07	52-week table: waiting in jail. Data for each of the past 52 weeks, showing probationers waiting for detention centers, RSAT, and boot camp; and state prisoners not yet assigned to diagnostic centers, in admission process, with delayed transport, and ready for pickup, with subtotals.

Releases by clemency and maxout, Jan-2000 to Jun-2025

There are two main ways of being released from a Georgia prison -- by actions of the Board of Pardons and Paroles ("Clemencies") and by service of 100% of the court-ordered sentences ("Maxouts").

"Clemency" includes paroles, reprieves, commutations, and transfer to other confinement prior to expiration of sentence. "Other Releases" includes deaths, and sentences modified or overturned by the courts. Clemencies and maxouts may or may not be followed by periods of probation.



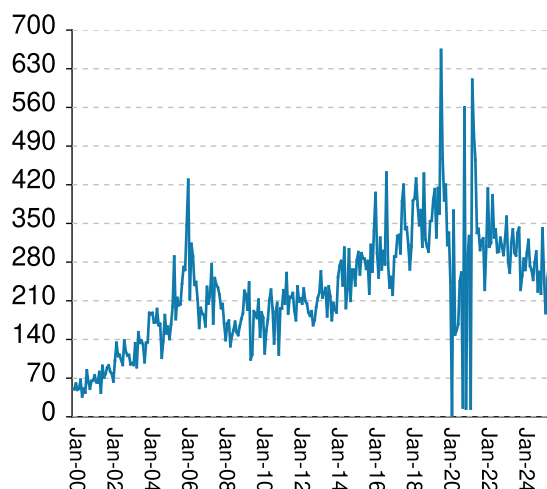
A. Clemency with probation to follow	RISES BY	12	from	423	to	435
B. Clemency only	RISES BY	14	from	46	to	60
C. Maxout with probation to follow	RISES BY	25	from	550	to	575
D. Maxout only (unsupervised)	falls by	14	from	55	to	41
E. Other releases	RISES BY	10	from	26	to	36
F. Total releases (A+B+C+D+E)	RISES BY	47	from	1100	to	1147
G. Total clemencies (A+B) (top line)	RISES BY	26	from	469	to	495
H. Total maxouts (C+D) (bottom line)	RISES BY	11	from	605	to	616
I. % of releases by clemency (G/F)	RISES BY	.52%	from	42.64%	to	43.16%
J. % of releases by maxout (H/F)	falls by	1.29%	from	55	to	53.71%
K. Supervised releases (A+B+C)	RISES BY	51	from	1019	to	1070
L. % unsupervised releases (D/F)	falls by	1.43%	from	5	to	3.57%
M. % supervised releases (K/F)	RISES BY	.65%	from	92.64%	to	93.29%

Monthly releases from prison by type of release, for the past 48 months										
	A	B	C	D	E	F	G	H	I	J
Month	Clemency + Prob	Clemency Only	Maxout + Prob	Maxout Only	Other rels	Total Releases (A+B+C+D+E)	Total Clemency (A+B)	Total Maxout (C+D)	Percent Clemency (G/F)	Percent Maxout (H/F)
Jul-21	392	65	533	64	19	1073	457	597	42.59%	55.64%
Aug-21	410	71	530	65	28	1104	481	595	43.57%	53.89%
Sep-21	439	80	522	68	32	1141	519	590	45.49%	51.71%
Oct-21	446	79	525	57	21	1128	525	582	46.54%	51.60%
Nov-21	426	78	494	64	18	1080	504	558	46.67%	51.67%
Dec-21	469	82	483	56	18	1108	551	539	49.73%	48.65%
Jan-22	459	80	552	75	26	1192	539	627	45.22%	52.60%
Feb-22	444	80	465	71	24	1084	524	536	48.34%	49.45%
Mar-22	460	73	515	56	16	1120	533	571	47.59%	50.98%
Apr-22	455	73	471	70	16	1085	528	541	48.66%	49.86%
May-22	439	79	540	63	26	1147	518	603	45.16%	52.57%
Jun-22	457	64	528	57	21	1127	521	585	46.23%	51.91%
Jul-22	442	68	530	59	14	1113	510	589	45.82%	52.92%
Aug-22	425	67	619	65	21	1197	492	684	41.10%	57.14%
Sep-22	397	78	549	59	18	1101	475	608	43.14%	55.22%
Oct-22	373	62	606	60	23	1124	435	666	38.70%	59.25%
Nov-22	367	53	525	53	19	1017	420	578	41.30%	56.83%
Dec-22	342	60	550	59	28	1039	402	609	38.69%	58.61%
Jan-23	375	51	526	60	23	1035	426	586	41.16%	56.62%
Feb-23	388	46	495	51	17	997	434	546	43.53%	54.76%
Mar-23	377	55	573	63	24	1092	432	636	39.56%	58.24%
Apr-23	390	57	574	53	26	1100	447	627	40.64%	57.00%
May-23	327	47	931	130	20	1455	374	1061	25.70%	72.92%
Jun-23	463	70	568	58	19	1178	533	626	45.25%	53.14%
Jul-23	461	72	513	46	25	1117	533	559	47.72%	50.04%
Aug-23	402	52	589	54	22	1119	454	643	40.57%	57.46%
Sep-23	403	55	576	44	10	1088	458	620	42.10%	56.99%
Oct-23	363	51	578	51	31	1074	414	629	38.55%	58.57%
Nov-23	356	55	494	64	19	988	411	558	41.60%	56.48%
Dec-23	367	46	554	57	21	1045	413	611	39.52%	58.47%
Jan-24	368	61	598	63	32	1122	429	661	38.24%	58.91%
Feb-24	395	52	578	59	24	1108	447	637	40.34%	57.49%
Mar-24	380	63	588	63	20	1114	443	651	39.77%	58.44%
Apr-24	411	46	530	55	33	1075	457	585	42.51%	54.42%
May-24	428	54	607	75	26	1190	482	682	40.50%	57.31%
Jun-24	410	63	578	58	23	1132	473	636	41.78%	56.18%
Jul-24	399	61	633	64	38	1195	460	697	38.49%	58.33%
Aug-24	381	68	640	58	19	1166	449	698	38.51%	59.86%
Sep-24	380	64	561	64	34	1103	444	625	40.25%	56.66%
Oct-24	402	57	631	55	28	1173	459	686	39.13%	58.48%
Nov-24	389	53	594	52	23	1111	442	646	39.78%	58.15%
Dec-24	391	58	557	47	33	1086	449	604	41.34%	55.62%
Jan-25	418	59	563	46	30	1116	477	609	42.74%	54.57%
Feb-25	399	57	545	61	17	1079	456	606	42.26%	56.16%
Mar-25	433	54	595	51	23	1156	487	646	42.13%	55.88%
Apr-25	408	63	556	46	18	1091	471	602	43.17%	55.18%
May-25	423	46	550	55	26	1100	469	605	42.64%	55.00%
Jun-25	435	60	575	41	36	1147	495	616	43.16%	53.71%

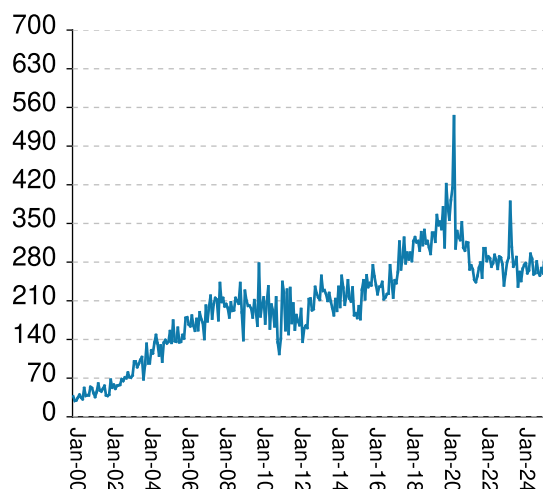
Inmates with meth crimes, by month, Jan-2000 to Jun-2025

Methamphetamine is one of the most addictive drugs ever known. At first it induces intense euphoria, but with continued use causes severe depression and physical deterioration, including the dental catastrophe known as "meth mouth". Georgia's meth epidemic began in the early 2000s and has seen continued growth over the last 2 decades, with continued expansion beyond the originally predominate use by northern county white males.

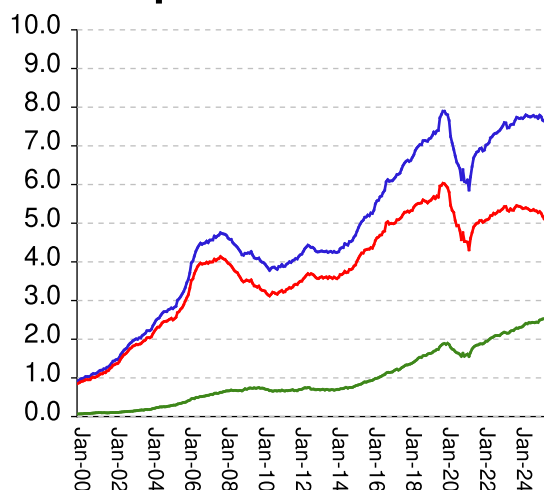
Admissions



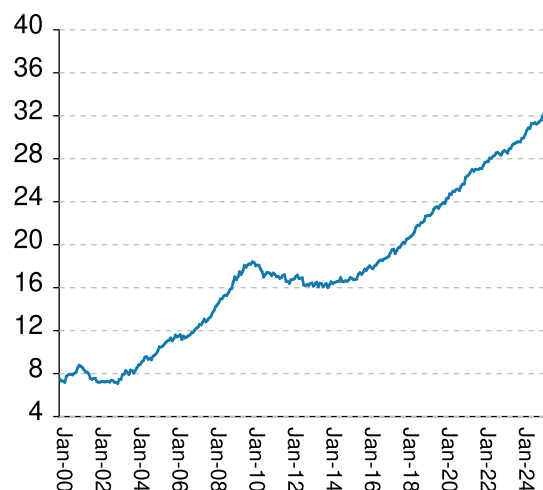
Releases



Population x1000



Percent Non-White

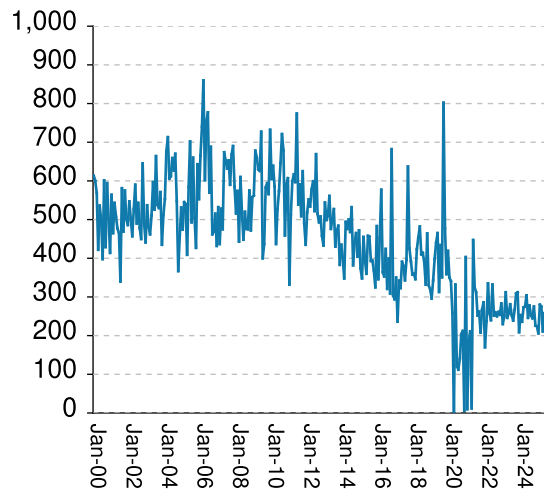


Methamphetamine admissions	RISES BY	24	from	247	to	271
Methamphetamine releases	RISES BY	7	from	269	to	276
Methamphetamine population	falls by	5	from	7641	to	7636
Meth white population	falls by	8	from	5112	to	5104
Meth non-white population	RISES BY	30	from	2529	to	2559
Percent meth inmates who are non-white	RISES BY	.41%	from	33.1%	to	33.51%

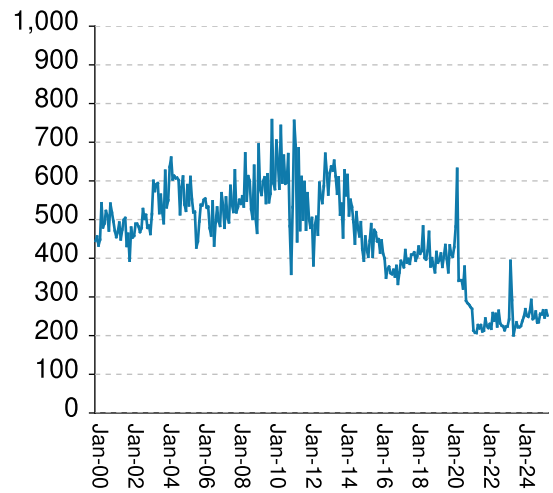
Non-violent first-incarcerants, by month, Jan-2000 to Jun-2025

Historically, about one in six Georgia prison inmates has been a first-time incarcerant with a non-violent crime. In 2012 Georgia passed HB1176, which aimed to curb the growth of prison population by steering the least dangerous, least hardened offenders away from prison through pre-trial intervention, diversion, drug courts and treatment programs, and raising the dollar thresholds that define property felonies. The expectation is that over time, these measures will reduce the percentage of first-time non-violent incarcerants in prison.

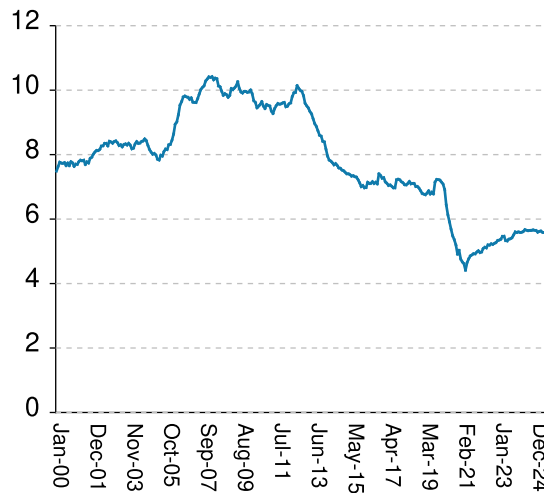
Admissions



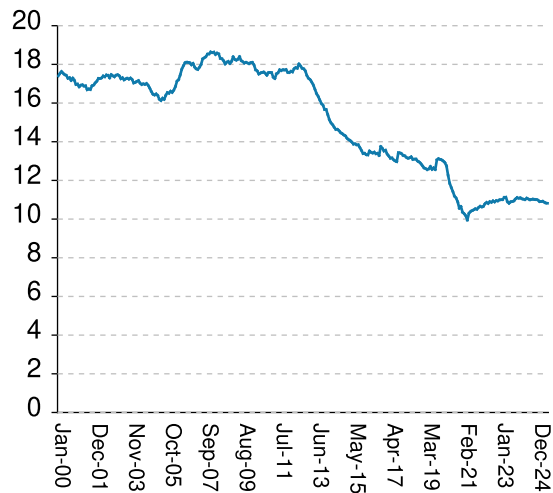
Releases



Population x1000



% Total Population

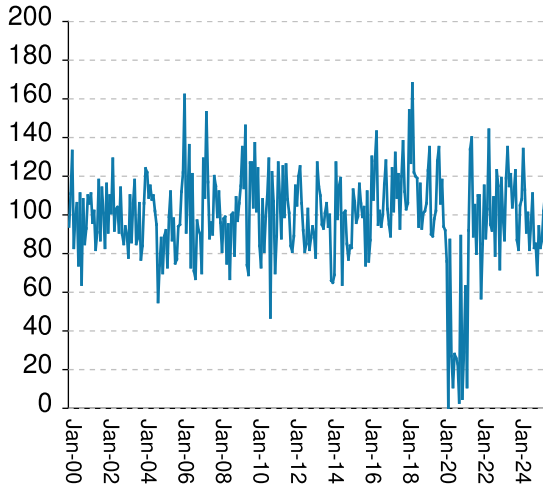


Non-viol/1st-Incar admissions	RISES BY	4	from	258	to	262
Non-viol/1st-Incar releases	falls by	13	from	265	to	252
Non-viol/1st-Incar population	RISES BY	10	from	5585	to	5595
Non-viol/1st-Incar % of total population	falls by	.01%	from	10.83%	to	10.82%

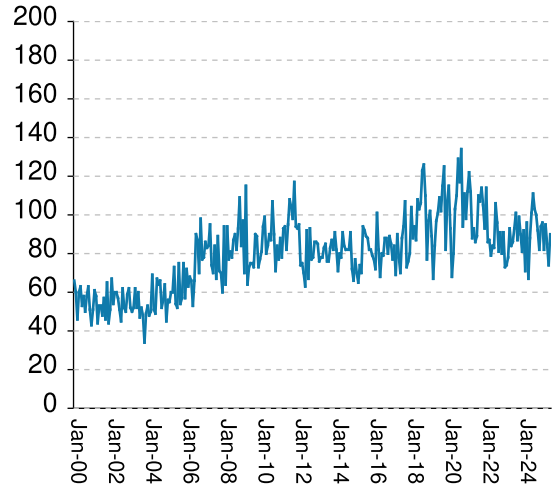
'Seven Deadly Sin', by month, Jan-2000 to Jun-2025

Tough legislation in 1995 imposed mandatory ten-year minimum terms for kidnapping, armed robbery, rape, aggravated sodomy, aggravated sexual battery, and aggravated child molestation, and a minimum of 25 years for murder. A second conviction resulted in life without parole. As predicted, longer prison terms caused population to climb steeply for about a decade. It then began to level off, as releases started catching up with admissions. The 2008 dip in percentage of total population (bottom right) was caused by the surge of methamphetamine convictions (Page MO-03). Note: these graphs include inmates convicted before 1995.

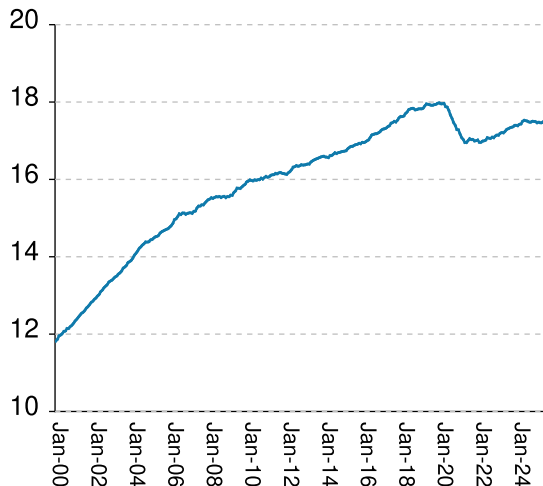
Admissions



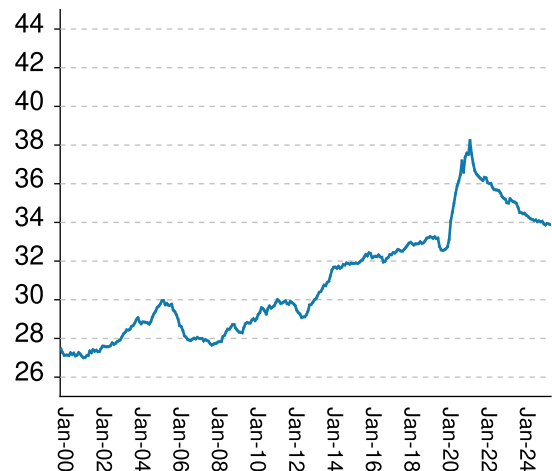
Releases



Population x1000



% Total Population



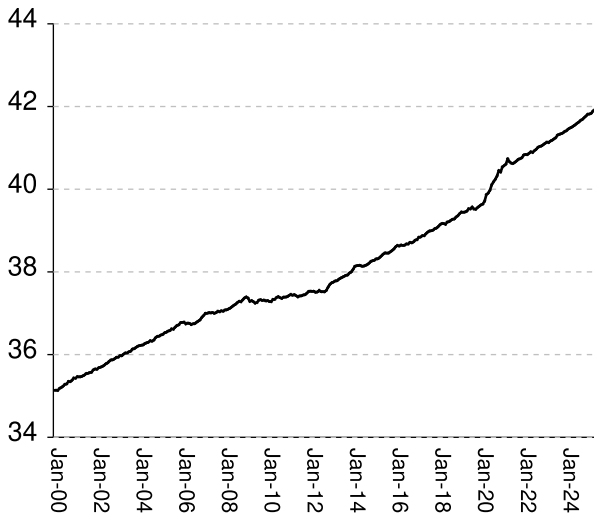
"Seven Deadly Sin" admissions	RISES BY	9	from	102	to	111
"Seven Deadly Sin" releases	RISES BY	16	from	74	to	90
"Seven Deadly Sin" population	RISES BY	21	from	17495	to	17516
"Seven Deadly Sin" % of total population	falls by	.03%	from	33.92%	to	33.89%

Inmate subpopulation counts and percentages, for the past 48 months										
Month	Methamphetamine						1st Incar Non-Violent		Seven Deadly Sins	
	Total Number	Total Percent	White Number	White Percent	Non White Number	Non White Percent	Number	Percent	Number	Percent
Jul-21	6687	14.38%	4899	73.26%	1795	26.84%	4856	10.44%	17053	36.67%
Aug-21	6765	14.50%	4954	73.23%	1827	27.01%	4889	10.48%	17032	36.51%
Sep-21	6835	14.61%	4995	73.08%	1847	27.02%	4924	10.53%	17030	36.41%
Oct-21	6858	14.65%	5011	73.07%	1854	27.03%	4921	10.51%	16996	36.32%
Nov-21	6925	14.76%	5064	73.13%	1877	27.10%	4975	10.60%	17001	36.24%
Dec-21	6943	14.76%	5070	73.02%	1880	27.08%	5017	10.66%	17018	36.17%
Jan-22	6868	14.71%	5023	73.14%	1881	27.39%	4962	10.63%	16961	36.33%
Feb-22	6895	14.76%	5046	73.18%	1907	27.66%	4979	10.66%	16960	36.30%
Mar-22	7018	14.90%	5080	72.39%	1945	27.71%	5084	10.79%	16988	36.06%
Apr-22	7039	14.92%	5093	72.35%	1953	27.75%	5124	10.86%	16997	36.02%
May-22	7082	14.99%	5119	72.28%	1987	28.06%	5106	10.81%	17016	36.02%
Jun-22	7205	15.11%	5192	72.06%	2022	28.06%	5199	10.90%	17077	35.82%
Jul-22	7237	15.14%	5202	71.88%	2042	28.22%	5195	10.87%	17066	35.70%
Aug-22	7292	15.25%	5257	72.09%	2065	28.32%	5231	10.94%	17062	35.68%
Sep-22	7322	15.28%	5238	71.54%	2090	28.54%	5217	10.89%	17090	35.67%
Oct-22	7331	15.30%	5267	71.85%	2095	28.58%	5246	10.95%	17078	35.64%
Nov-22	7367	15.28%	5314	72.13%	2096	28.45%	5274	10.94%	17121	35.52%
Dec-22	7400	15.25%	5309	71.74%	2097	28.34%	5333	10.99%	17145	35.34%
Jan-23	7455	15.33%	5341	71.64%	2134	28.63%	5349	11.00%	17144	35.25%
Feb-23	7517	15.39%	5375	71.50%	2162	28.76%	5376	11.01%	17189	35.20%
Mar-23	7599	15.46%	5426	71.40%	2179	28.67%	5464	11.12%	17210	35.02%
Apr-23	7591	15.44%	5431	71.55%	2166	28.53%	5468	11.13%	17204	35.00%
May-23	7463	15.25%	5337	71.51%	2156	28.89%	5333	10.90%	17239	35.22%
Jun-23	7470	15.18%	5312	71.11%	2164	28.97%	5322	10.82%	17288	35.13%
Jul-23	7537	15.27%	5373	71.29%	2205	29.26%	5374	10.89%	17310	35.07%
Aug-23	7557	15.28%	5340	70.66%	2222	29.40%	5392	10.91%	17330	35.05%
Sep-23	7560	15.24%	5337	70.60%	2227	29.46%	5425	10.94%	17347	34.97%
Oct-23	7657	15.33%	5407	70.62%	2263	29.55%	5512	11.04%	17359	34.76%
Nov-23	7737	15.35%	5453	70.48%	2288	29.57%	5602	11.11%	17392	34.51%
Dec-23	7721	15.31%	5442	70.48%	2283	29.57%	5586	11.08%	17398	34.50%
Jan-24	7709	15.28%	5431	70.45%	2305	29.90%	5601	11.10%	17388	34.45%
Feb-24	7720	15.27%	5412	70.10%	2311	29.94%	5588	11.05%	17422	34.47%
Mar-24	7708	15.20%	5380	69.80%	2331	30.24%	5593	11.03%	17434	34.38%
Apr-24	7745	15.19%	5387	69.55%	2372	30.63%	5616	11.01%	17501	34.32%
May-24	7800	15.24%	5397	69.19%	2406	30.85%	5671	11.08%	17526	34.24%
Jun-24	7778	15.18%	5382	69.20%	2399	30.84%	5655	11.04%	17516	34.18%
Jul-24	7758	15.13%	5356	69.04%	2427	31.28%	5641	11.00%	17506	34.15%
Aug-24	7748	15.11%	5328	68.77%	2422	31.26%	5650	11.02%	17485	34.10%
Sep-24	7767	15.16%	5334	68.68%	2434	31.34%	5649	11.03%	17481	34.13%
Oct-24	7785	15.14%	5353	68.76%	2432	31.24%	5662	11.01%	17500	34.04%
Nov-24	7751	15.09%	5323	68.68%	2428	31.32%	5654	11.01%	17501	34.08%
Dec-24	7757	15.09%	5315	68.52%	2442	31.48%	5643	10.98%	17492	34.03%
Jan-25	7711	15.04%	5275	68.41%	2436	31.59%	5593	10.91%	17465	34.06%
Feb-25	7792	15.13%	5300	68.02%	2492	31.98%	5618	10.91%	17477	33.93%
Mar-25	7753	15.04%	5257	67.81%	2506	32.32%	5628	10.92%	17465	33.87%
Apr-25	7663	14.89%	5174	67.52%	2524	32.94%	5592	10.87%	17467	33.94%
May-25	7641	14.82%	5112	66.90%	2529	33.10%	5585	10.83%	17495	33.92%
Jun-25	7636	14.77%	5104	66.84%	2559	33.51%	5595	10.82%	17516	33.89%

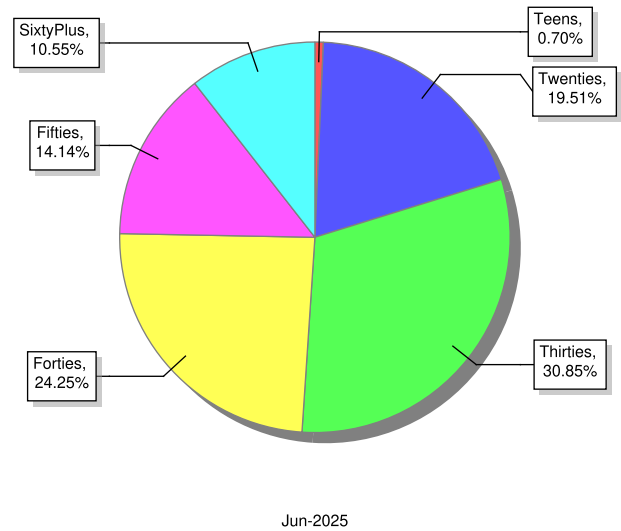
Overview of inmate age statistics, Jan-2000 to Jun-2025

The "aging inmate population" is a concern in correctional systems throughout America, including Georgia. Here, the increase in inmate age is the result of several factors. Teenagers have been steered away from prison by increased usage of probation and other alternatives, at least for their first convictions. And there has been a surge of middle-aged male sex offenders due to the expanding "It's OK to tell" ethos. But most importantly, more severe sentence lengths and release policies have greatly increased the length of time that most offenders -- especially violent ones -- spend in prison, thereby increasing their average age.

Average age since 2000



Current Age

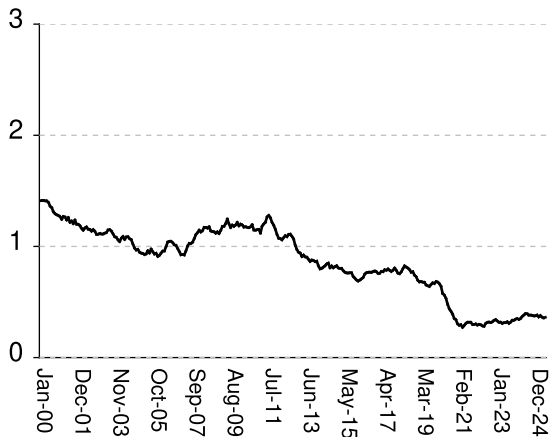


Average age of active inmates		level	at	41.92
Number in their teens	RISES BY	5	from	357	to	362	
Percentage in their teens	RISES BY	.01%	from	0.69%	to	0.7%	
Number in their twenties	RISES BY	40	from	10,080	to	10,120	
Percentage in their twenties	RISES BY	.04%	from	19.54%	to	19.58%	
Number in their thirties	RISES BY	150	from	15,850	to	16,000	
Percentage in their thirties	RISES BY	.22%	from	30.73%	to	30.95%	
Number in their forties	RISES BY	44	from	12,532	to	12,576	
Percentage in their forties	RISES BY	.03%	from	24.3%	to	24.33%	
Number in their fifties	RISES BY	10	from	7,326	to	7,336	
Percentage in their fifties	falls by	.01%	from	14.2%	to	14.19%	
Number age sixty and up	RISES BY	46	from	5,428	to	5,474	
Percentage age sixty and up	RISES BY	.07%	from	10.52%	to	10.59%	

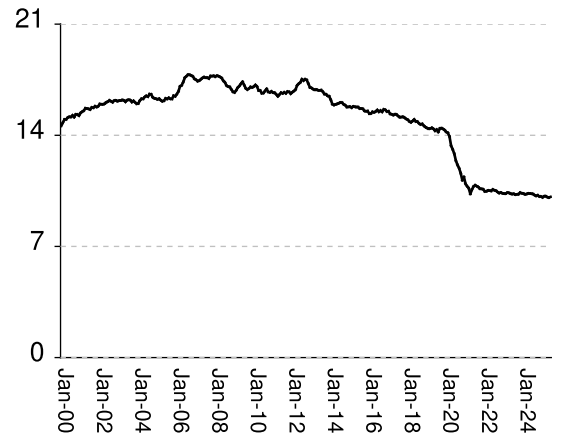
Monthly counts of inmates by age group, Jan-2000 to Jun-2025

Y-axis of Twenties/Thirties/Forties/Fifties runs from 0 to 21,000. Y-axis of Teens/Sixty+ runs from 0 to 3,000.

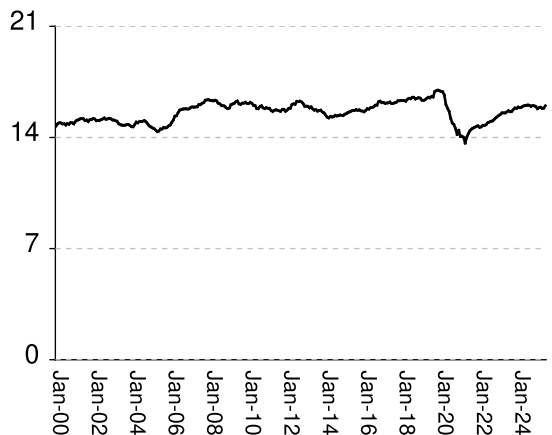
Teens x 1000



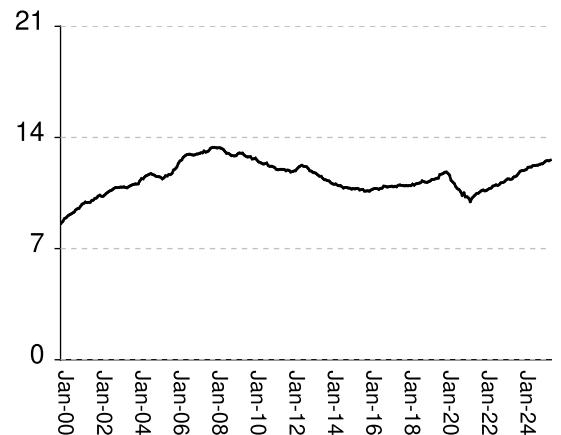
Twenties x 1000



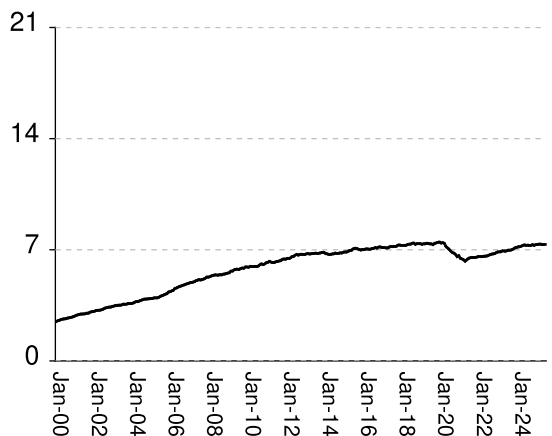
Thirties x 1000



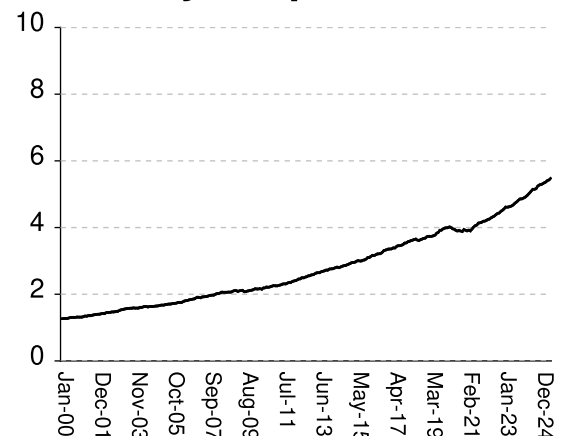
Forties x 1000



Fifties x 1000



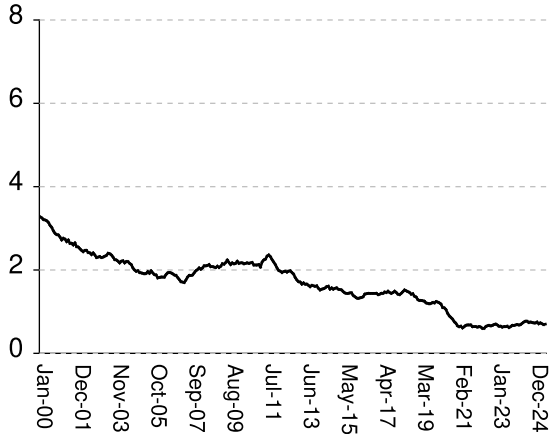
Sixty & Up x 1000



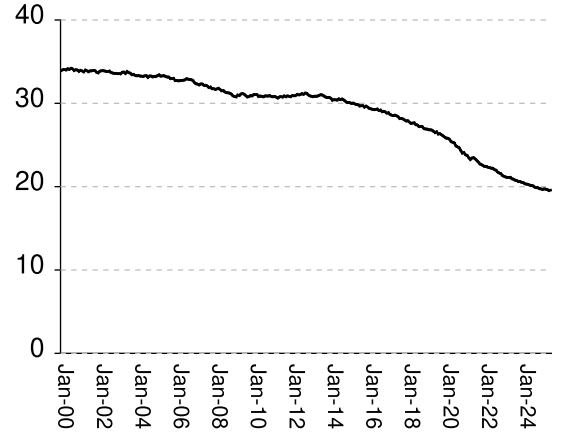
Monthly percentages of inmates by age group, Jan-2000 to Jun-2025

Y-axis of Twenties/Thirties/Forties/Fifties runs from 0% to 40%. Y-axis of Teens/Sixty+ runs from 0% to 8%

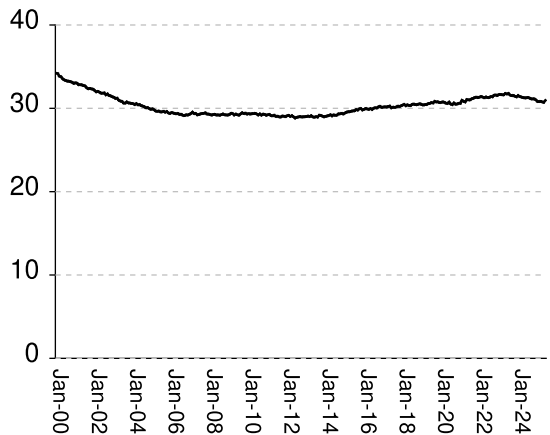
Teens (%)



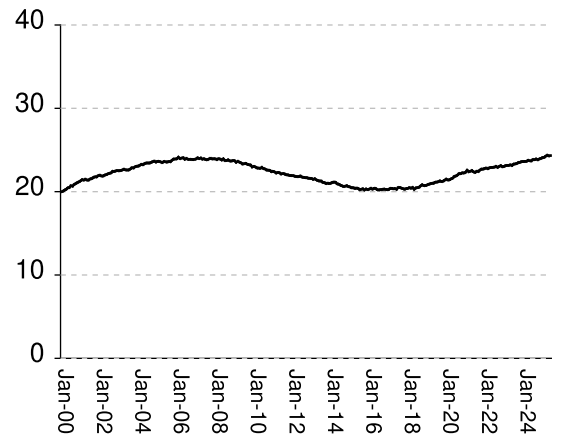
Twenties (%)



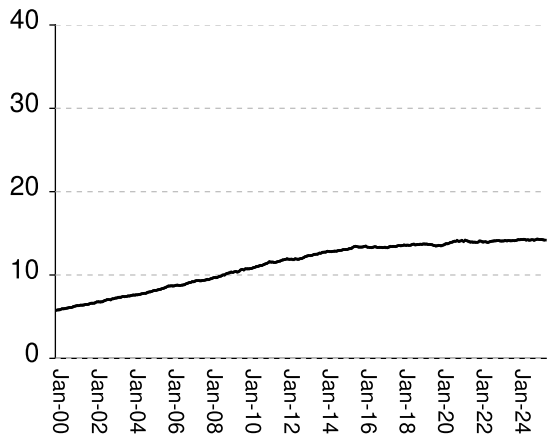
Thirties (%)



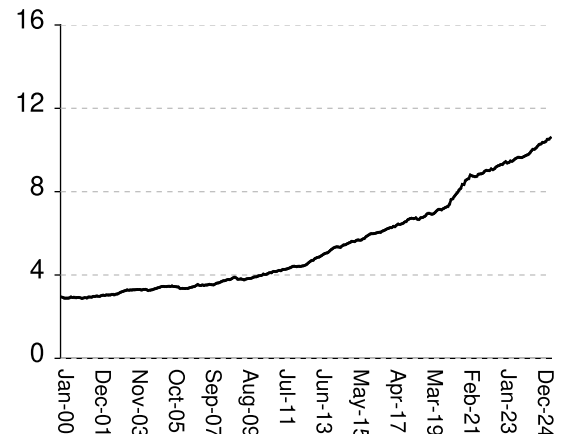
Forties (%)



Fifties (%)



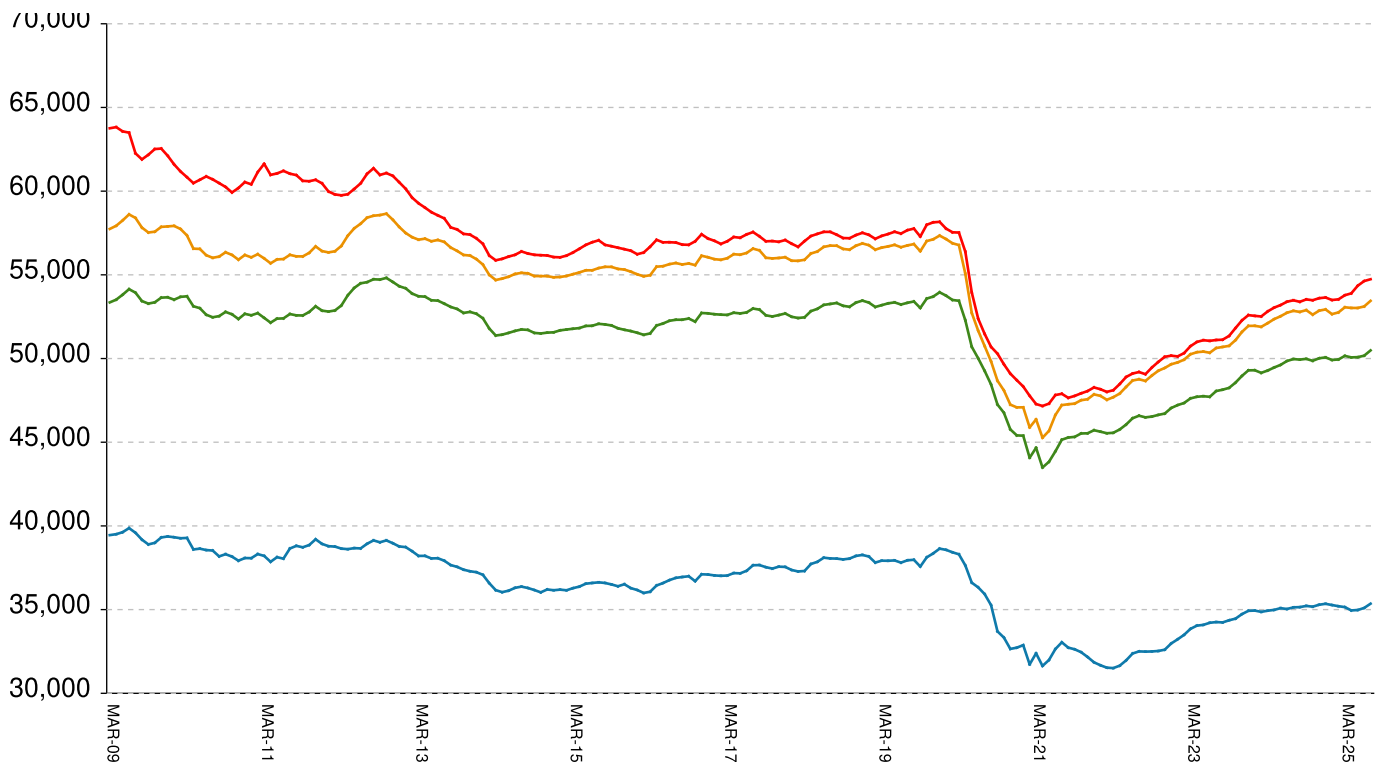
Sixty & Up (%)



Inmate counts & percentages by age, for past 48 months													
Month	Avg Age	Teens		Twenties		Thirties		Forties		Fifties		Sixty & Up	
		Num-ber	Per-cent	Num-ber	Per-cent	Num-ber	Per-cent	Num-ber	Per-cent	Num-ber	Per-cent	Num-ber	Per-cent
Jul-21	40.62	317	0.68%	10849	23.33%	14427	31.02%	10381	22.32%	6491	13.96%	4054	8.72%
Aug-21	40.65	318	0.68%	10794	23.14%	14525	31.13%	10469	22.44%	6511	13.96%	4077	8.74%
Sep-21	40.69	317	0.68%	10736	22.95%	14593	31.20%	10493	22.43%	6520	13.94%	4132	8.83%
Oct-21	40.72	299	0.64%	10636	22.73%	14642	31.29%	10573	22.59%	6524	13.94%	4142	8.85%
Nov-21	40.74	299	0.64%	10624	22.64%	14700	31.33%	10650	22.70%	6532	13.92%	4158	8.86%
Dec-21	40.77	302	0.64%	10595	22.52%	14729	31.30%	10687	22.71%	6564	13.95%	4186	8.90%
Jan-22	40.83	293	0.63%	10472	22.43%	14636	31.35%	10640	22.79%	6568	14.07%	4194	8.98%
Feb-22	40.84	298	0.64%	10474	22.42%	14672	31.40%	10665	22.82%	6565	14.05%	4214	9.02%
Mar-22	40.84	295	0.63%	10521	22.33%	14763	31.34%	10728	22.77%	6575	13.96%	4243	9.01%
Apr-22	40.87	285	0.60%	10513	22.28%	14757	31.28%	10784	22.86%	6598	13.98%	4258	9.02%
May-22	40.9	282	0.60%	10498	22.22%	14808	31.35%	10817	22.90%	6599	13.97%	4294	9.09%
Jun-22	40.89	307	0.64%	10584	22.20%	14923	31.30%	10927	22.92%	6630	13.91%	4321	9.06%
Jul-22	40.93	316	0.66%	10539	22.05%	14966	31.31%	10969	22.95%	6672	13.96%	4348	9.10%
Aug-22	40.96	319	0.67%	10507	21.97%	15016	31.40%	11010	23.02%	6708	14.03%	4389	9.18%
Sep-22	41.01	316	0.66%	10425	21.76%	15039	31.39%	10981	22.92%	6736	14.06%	4421	9.23%
Oct-22	41.03	322	0.67%	10367	21.64%	15125	31.56%	11035	23.03%	6751	14.09%	4439	9.26%
Nov-22	41.05	334	0.69%	10390	21.56%	15226	31.59%	11137	23.11%	6798	14.10%	4484	9.30%
Dec-22	41.08	341	0.70%	10351	21.34%	15309	31.55%	11159	23.00%	6850	14.12%	4517	9.31%
Jan-23	41.11	329	0.68%	10328	21.24%	15389	31.64%	11198	23.03%	6869	14.12%	4560	9.38%
Feb-23	41.14	318	0.65%	10330	21.16%	15457	31.66%	11289	23.12%	6873	14.08%	4611	9.44%
Mar-23	41.13	318	0.65%	10382	21.12%	15546	31.63%	11377	23.15%	6922	14.08%	4612	9.38%
Apr-23	41.16	308	0.63%	10374	21.11%	15547	31.63%	11385	23.16%	6925	14.09%	4620	9.40%
May-23	41.18	314	0.64%	10329	21.10%	15548	31.77%	11360	23.21%	6917	14.13%	4635	9.47%
Jun-23	41.22	315	0.64%	10302	20.94%	15613	31.73%	11391	23.15%	6936	14.10%	4657	9.46%
Jul-23	41.25	322	0.65%	10312	20.89%	15685	31.78%	11502	23.30%	6975	14.13%	4692	9.51%
Aug-23	41.31	308	0.62%	10268	20.77%	15625	31.60%	11537	23.33%	6976	14.11%	4738	9.58%
Sep-23	41.33	318	0.64%	10281	20.72%	15642	31.53%	11602	23.39%	7001	14.11%	4774	9.62%
Oct-23	41.34	335	0.67%	10293	20.61%	15753	31.54%	11729	23.49%	7051	14.12%	4821	9.65%
Nov-23	41.36	336	0.67%	10387	20.61%	15854	31.45%	11858	23.53%	7118	14.12%	4857	9.64%
Dec-23	41.39	345	0.68%	10351	20.52%	15833	31.39%	11904	23.60%	7149	14.17%	4860	9.64%
Jan-24	41.42	350	0.69%	10334	20.48%	15910	31.53%	11916	23.61%	7180	14.23%	4881	9.67%
Feb-24	41.45	344	0.68%	10285	20.35%	15881	31.42%	11946	23.63%	7192	14.23%	4906	9.71%
Mar-24	41.48	351	0.69%	10298	20.31%	15902	31.36%	11994	23.65%	7229	14.26%	4944	9.75%
Apr-24	41.5	369	0.72%	10336	20.27%	15961	31.30%	12111	23.75%	7271	14.26%	4990	9.78%
May-24	41.53	382	0.75%	10333	20.19%	15999	31.26%	12134	23.71%	7303	14.27%	5041	9.85%
Jun-24	41.56	395	0.77%	10319	20.14%	16015	31.26%	12142	23.70%	7278	14.20%	5096	9.95%
Jul-24	41.59	394	0.77%	10304	20.10%	16041	31.29%	12221	23.84%	7289	14.22%	5144	10.03%
Aug-24	41.62	382	0.74%	10235	19.96%	16021	31.24%	12226	23.84%	7269	14.18%	5149	10.04%
Sep-24	41.66	382	0.75%	10189	19.89%	15956	31.15%	12249	23.91%	7279	14.21%	5172	10.10%
Oct-24	41.69	380	0.74%	10219	19.88%	16002	31.13%	12254	23.84%	7316	14.23%	5239	10.19%
Nov-24	41.73	375	0.73%	10152	19.77%	15990	31.13%	12287	23.92%	7282	14.18%	5275	10.27%
Dec-24	41.77	376	0.73%	10143	19.73%	15947	31.02%	12331	23.99%	7320	14.24%	5291	10.29%
Jan-25	41.81	382	0.75%	10090	19.68%	15814	30.84%	12345	24.08%	7330	14.30%	5311	10.36%
Feb-25	41.82	366	0.71%	10159	19.72%	15869	30.81%	12426	24.12%	7351	14.27%	5341	10.37%
Mar-25	41.84	378	0.73%	10160	19.70%	15897	30.83%	12511	24.26%	7354	14.26%	5366	10.41%
Apr-25	41.89	364	0.71%	10107	19.64%	15836	30.77%	12537	24.36%	7332	14.25%	5407	10.51%
May-25	41.92	357	0.69%	10080	19.54%	15850	30.73%	12532	24.30%	7326	14.20%	5428	10.52%
Jun-25	41.92	362	0.70%	10120	19.58%	16000	30.95%	12576	24.33%	7336	14.19%	5474	10.59%

All housed offenders under GDC jurisdiction

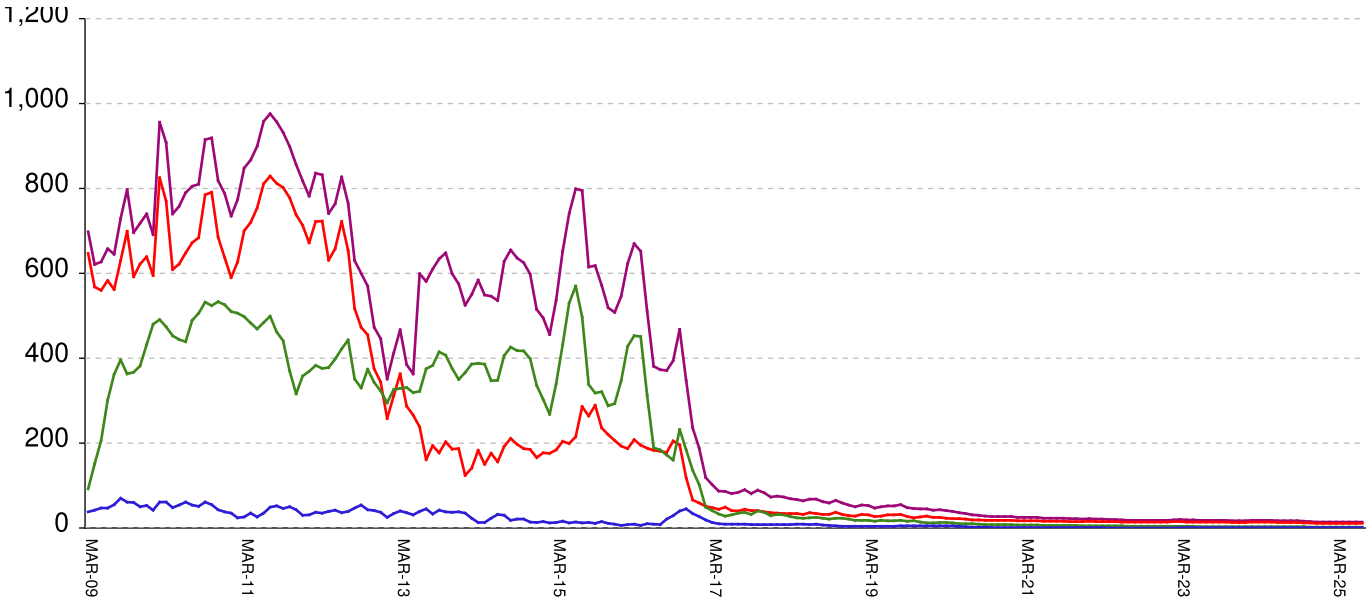
March 20, 2009 through July 18, 2025



All in bed + probs in jail + backlog	RISES BY	41	from	54,698	to	54,739
Probationers in jail	14	at	14
Inmate jail backlog	RISES BY	55	from	1,191	to	1,246
All in beds: inmate + Prob + parole	falls by	14	from	53,493	to	53,479
Total probationers in beds	falls by	10	from	2,964	to	2,954
Probation detention centers	falls by	39	from	1,531	to	1,492
Probation boot camps	falls by	...	from		to	
Probation RSAT	RISES BY	29	from	1,433	to	1,462
Parole revocation centers	falls by	...	from		to	
All in inmate beds: state + other	falls by	4	from	50,529	to	50,525
Other inmate facilities:	falls by	23	from	15,149	to	15,126
Inmate boot camps	0	at	0
Private prisons	falls by	8	from	8,044	to	8,036
County prisons	falls by	36	from	4,436	to	4,400
Transitional centers	RISES BY	21	from	2,669	to	2,690
In state prisons only	RISES BY	19	from	35,380	to	35,399

Probationers in jail awaiting placement in facilities

March 20, 2009 through July 18, 2025



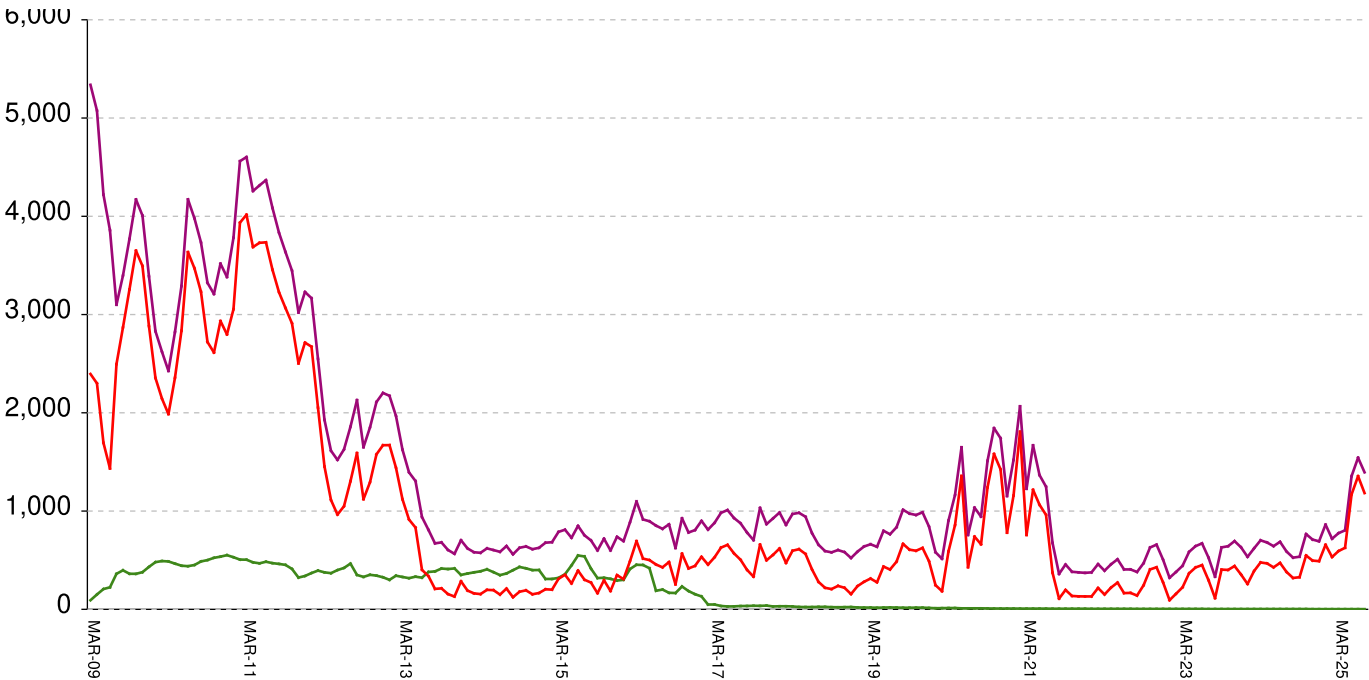
This graph shows, for each Friday since March 20 2009, the number of sentenced felony probationers who were waiting in jail for placement in facilities that GDC operates for housing probationers -- detention centers, probation residential substance abuse treatment (RSAT) centers, and probation boot camps. Counts include both those offenders sentenced directly from court, and those whose street probation was revoked.

Total probationers waiting in jail	level	at	14
...waiting for detention centers	level	at	11
...waiting for probation RSAT	level	at	2
...waiting for probation boot camps	level	at	1

The highest number of probationers waiting in jail was	994	on	05-MAR-10
...highest number waiting for detention centers was	859	on	05-MAR-10
...highest number waiting for probation RSAT was	592	on	10-JUL-15
...highest number waiting for probation boot camps was	70	on	18-SEP-09

State inmates in jail awaiting placement in facilities

March 20, 2009 through July 18, 2025



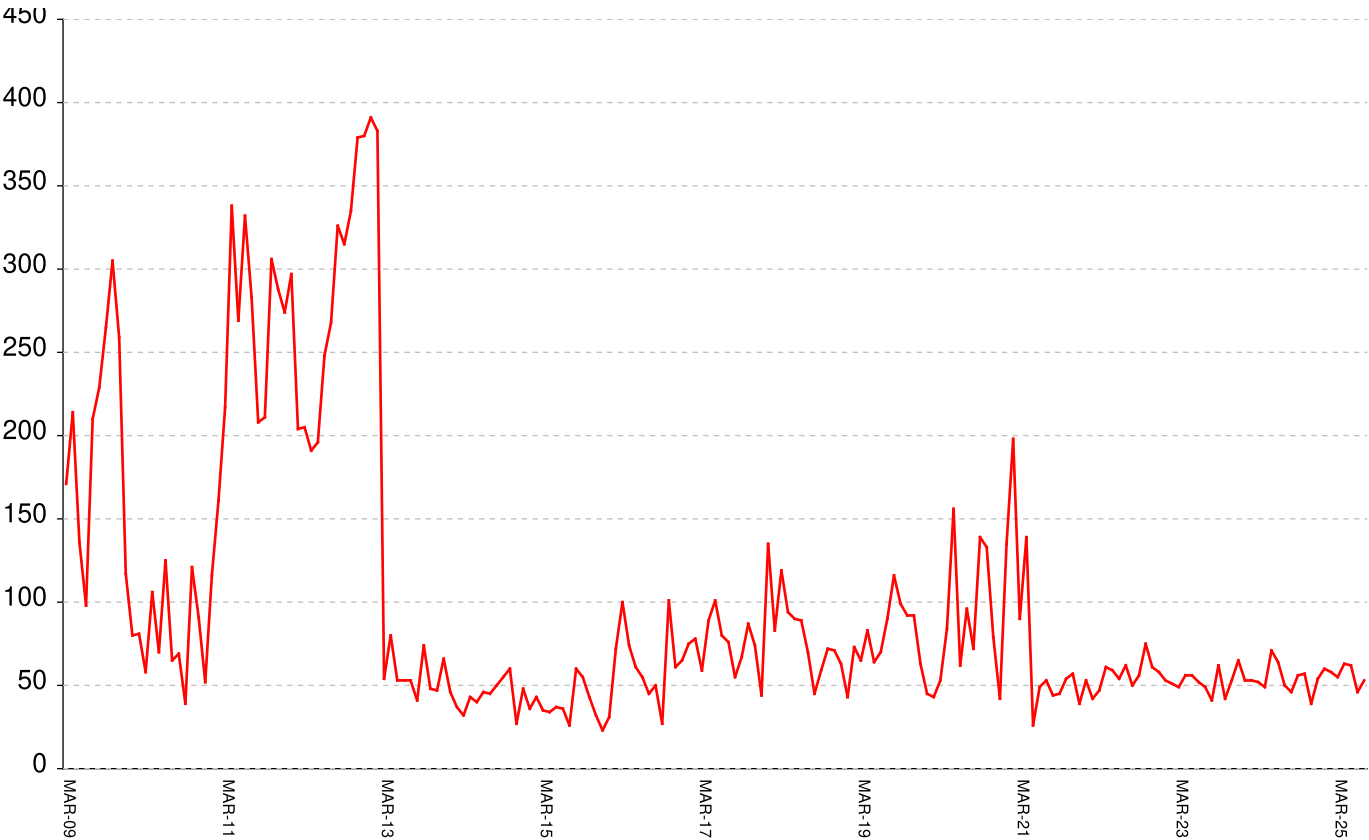
This graph shows, for each Friday since March 2009, the number of prisoners, probationers, and parolees in local jails who have been sentenced or revoked to state prison and whose documents have been received and verified by GDC. Most are almost immediately assigned to a diagnostic center, and are designated as in "admission processing". Of those a few hundred may be in the "transportation delayed" category because there is no room in the assigned diagnostic center, or because the inmate is being held for medical reasons, or for other court proceedings, or other reasons. Those remaining are "ready to be picked up".

Total state inmates waiting in jail	RISES BY	55	from	1191	to	1246
... not yet assigned to a diagnostic center	level	at	9
... total "in admission processing"	RISES BY	55	from	1182	to	1237
... with "transportation delayed"	falls by	3	from	201	to	198
... ready to be picked up	RISES BY	58	from	981	to	1039

The highest number of state inmates waiting in jail was	5338	on	27-MAR-09
... highest number not asg to a diagnostic center was	2881	on	12-JUN-09
... highest number in admission processing was	4916	on	25-MAR-11
... highest number with transportation delayed was	645	on	14-JAN-11
... highest number ready to be pickup was	4435	on	25-MAR-11

Female state inmates in jail awaiting pickup

March 20, 2009 through July 18, 2025



This graph shows, for each Friday since March 2009, the number of female state prisoners in local jails who were assigned to diagnostic centers but had not yet been picked up.

Female state inmates in jails waiting picked up **RISES BY** **8** **from** **50** **to** **58**

The highest number of female inmates waiting in jail was 424 on 01-FEB-13

The lowest number of female inmates waiting in jail was 17 on 20-MAR-20

Summary of housed prisoners, parolees, and probationers									
Week Ending	Prison	Parole	Probation			Prison+parole+probation	Jail		Total
	Total inmates	Revocation centers	Prob RSAT	Boot camp	Detention		Inmate backlog	Probationers	Prison+parole+probation+jail
26-Jul-2024	49939		1433		1447	52819	631	17	53467
02-Aug-2024	49931		1424		1438	52793	598	17	53408
09-Aug-2024	49870		1418		1417	52705	526	17	53248
16-Aug-2024	49881		1429		1400	52710	609	17	53336
23-Aug-2024	49950		1453		1388	52791	598	17	53406
30-Aug-2024	50050		1466		1417	52933	598	17	53548
06-Sep-2024	49948		1452		1456	52856	549	17	53422
13-Sep-2024	49996		1457		1449	52902	535	17	53454
20-Sep-2024	50025		1467		1428	52920	660	17	53597
27-Sep-2024	49948		1515		1424	52887	755	17	53659
04-Oct-2024	49700		1465		1324	52489	989	17	53495
11-Oct-2024	49904		1490		1297	52691	857	16	53564
18-Oct-2024	49937		1494		1257	52688	769	16	53473
25-Oct-2024	49914		1461		1245	52620	766	16	53402
01-Nov-2024	49982		1487		1290	52759	760	16	53535
08-Nov-2024	49986		1504		1307	52797	724	15	53536
15-Nov-2024	50025		1480		1374	52879	710	15	53604
22-Nov-2024	50076		1484		1384	52944	710	15	53669
29-Nov-2024	50000		1511		1405	52916	751	15	53682
06-Dec-2024	50030		1493		1392	52915	688	14	53617
13-Dec-2024	50065		1466		1387	52918	711	14	53643
20-Dec-2024	50089		1505		1370	52964	692	14	53670
27-Dec-2024	50093		1487		1357	52937	702	14	53653
03-Jan-2025	50009		1474		1349	52832	794	14	53640
10-Jan-2025	49957		1478		1312	52747	778	14	53539
17-Jan-2025	50011		1456		1309	52776	752	14	53542
24-Jan-2025	49767		1407		1212	52386	957	14	53357
31-Jan-2025	49828		1453		1244	52525	862	14	53401
07-Feb-2025	49842		1474		1280	52596	828	14	53438
14-Feb-2025	49917		1494		1305	52716	746	14	53476
21-Feb-2025	49977		1475		1354	52806	778	14	53598
28-Feb-2025	50043		1464		1396	52903	718	14	53635
07-Mar-2025	50081		1449		1390	52920	679	14	53613
14-Mar-2025	50181		1476		1428	53085	664	14	53763
21-Mar-2025	50155		1474		1456	53085	703	14	53802
28-Mar-2025	50212		1477		1471	53160	775	14	53949
04-Apr-2025	50155		1483		1488	53126	772	14	53912
11-Apr-2025	50044		1473		1496	53013	804	14	53831
18-Apr-2025	50040		1449		1489	52978	895	14	53887
25-Apr-2025	50035		1454		1486	52975	962	14	53951
02-May-2025	50070		1461		1501	53032	1094	14	54140
09-May-2025	49969		1446		1504	52919	1192	14	54125
16-May-2025	50043		1435		1473	52951	1355	14	54320
23-May-2025	50107		1428		1501	53036	1453	14	54503
30-May-2025	50224		1437		1509	53170	1477	14	54661
06-Jun-2025	50133		1455		1482	53070	1520	14	54604
13-Jun-2025	50139		1440		1487	53066	1524	14	54604
20-Jun-2025	50045		1425		1525	52995	1543	14	54552
27-Jun-2025	50363		1438		1512	53313	1425	14	54752
04-Jul-2025	50404		1450		1516	53370	1394	14	54778
11-Jul-2025	50529		1433		1531	53493	1191	14	54698
18-Jul-2025	50525		1462		1492	53479	1246	14	54739

Offenders housed in facilities for state prisoners

Week ending	In state prisons	In facilities other than state prisons						Total Inmates
		Transition centers	County prisons	Pre-rel centers	Private prisons	Inmate boot camps	Total others	
26-Jul-2024	35139	2751	4478		7571	0	14800	49939
02-Aug-2024	35134	2752	4502		7543	0	14797	49931
09-Aug-2024	35109	2749	4482		7529	1	14761	49870
16-Aug-2024	35109	2747	4489		7535	1	14772	49881
23-Aug-2024	35149	2756	4507		7537	1	14801	49950
30-Aug-2024	35243	2761	4517		7528	1	14807	50050
06-Sep-2024	35195	2716	4508		7528	1	14753	49948
13-Sep-2024	35217	2752	4493		7533	1	14779	49996
20-Sep-2024	35238	2746	4506		7534	1	14787	50025
27-Sep-2024	35230	2724	4475		7518	1	14718	49948
04-Oct-2024	35111	2663	4437		7488	1	14589	49700
11-Oct-2024	35197	2679	4493		7534	1	14707	49904
18-Oct-2024	35211	2739	4469		7517	1	14726	49937
25-Oct-2024	35182	2745	4466		7520	1	14732	49914
01-Nov-2024	35239	2765	4442		7535	1	14743	49982
08-Nov-2024	35246	2756	4434		7549	1	14740	49986
15-Nov-2024	35323	2747	4403		7551	1	14702	50025
22-Nov-2024	35354	2755	4428		7538	1	14722	50076
29-Nov-2024	35292	2750	4431		7526	1	14708	50000
06-Dec-2024	35285	2756	4451		7537	1	14745	50030
13-Dec-2024	35339	2763	4429		7533	1	14726	50065
20-Dec-2024	35382	2755	4417		7534	1	14707	50089
27-Dec-2024	35380	2734	4433		7545	1	14713	50093
03-Jan-2025	35335	2721	4419		7533	1	14674	50009
10-Jan-2025	35311	2691	4428		7526	1	14646	49957
17-Jan-2025	35313	2677	4467		7553	1	14698	50011
24-Jan-2025	35190	2631	4416		7529	1	14577	49767
31-Jan-2025	35220	2660	4419		7528	1	14608	49828
07-Feb-2025	35212	2646	4438		7545	1	14630	49842
14-Feb-2025	35219	2641	4451		7605	1	14698	49917
21-Feb-2025	35197	2629	4488		7662	1	14780	49977
28-Feb-2025	35183	2622	4500		7737	1	14860	50043
07-Mar-2025	35161	2624	4515		7780	1	14920	50081
14-Mar-2025	35187	2617	4528		7848	1	14994	50181
21-Mar-2025	35144	2608	4487		7915	1	15011	50155
28-Mar-2025	35103	2612	4520		7976	1	15109	50212
04-Apr-2025	35047	2599	4524		7984	1	15108	50155
11-Apr-2025	34951	2596	4501		7995	1	15093	50044
18-Apr-2025	34906	2591	4515		8027	1	15134	50040
25-Apr-2025	34904	2590	4522		8018	1	15131	50035
02-May-2025	34954	2567	4511		8037	1	15116	50070
09-May-2025	34900	2544	4495		8029	1	15069	49969
16-May-2025	34954	2554	4502		8032	1	15089	50043
23-May-2025	35001	2577	4501		8028	0	15106	50107
30-May-2025	35065	2605	4511		8043	0	15159	50224
06-Jun-2025	35068	2587	4440		8038	0	15065	50133
13-Jun-2025	35092	2599	4416		8032	0	15047	50139
20-Jun-2025	35027	2590	4442		7986	0	15018	50045
27-Jun-2025	35203	2645	4483		8032	0	15160	50363
04-Jul-2025	35284	2652	4430		8038	0	15120	50404
11-Jul-2025	35380	2669	4436		8044	0	15149	50529
18-Jul-2025	35399	2690	4400		8036	0	15126	50525

Offenders waiting in local jails for state facilities										
	Probationers waiting in jail				Probationers waiting in jail					
Week ending	.. for PDCs	.. for RSAT	.. for boot camps	Total	Total backlog	Not yet assigned	In adm process	Delayed transport	Ready for pickup	Assigned females
26-Jul-2024	13	3	1	17	631	29	602	183	419	54
02-Aug-2024	13	3	1	17	598	27	571	181	390	59
09-Aug-2024	13	3	1	17	526	28	498	179	319	46
16-Aug-2024	13	3	1	17	609	24	585	184	401	69
23-Aug-2024	13	3	1	17	598	24	574	185	389	61
30-Aug-2024	13	3	1	17	598	25	573	186	387	63
06-Sep-2024	13	3	1	17	549	25	524	182	342	59
13-Sep-2024	13	3	1	17	535	25	510	183	327	56
20-Sep-2024	13	3	1	17	660	26	634	182	452	84
27-Sep-2024	13	3	1	17	755	27	728	184	544	52
04-Oct-2024	13	3	1	17	989	25	964	183	781	79
11-Oct-2024	12	3	1	16	857	26	831	185	646	69
18-Oct-2024	12	3	1	16	769	25	744	188	556	57
25-Oct-2024	12	3	1	16	766	26	740	192	548	57
01-Nov-2024	12	3	1	16	760	25	735	186	549	69
08-Nov-2024	12	2	1	15	724	25	699	189	510	53
15-Nov-2024	12	2	1	15	710	25	685	187	498	53
22-Nov-2024	12	2	1	15	710	24	686	190	496	39
29-Nov-2024	12	2	1	15	751	24	727	187	540	43
06-Dec-2024	11	2	1	14	688	24	664	188	476	48
13-Dec-2024	11	2	1	14	711	21	690	184	506	57
20-Dec-2024	11	2	1	14	692	22	670	180	490	54
27-Dec-2024	11	2	1	14	702	23	679	178	501	41
03-Jan-2025	11	2	1	14	794	22	772	179	593	47
10-Jan-2025	11	2	1	14	778	22	756	180	576	46
17-Jan-2025	11	2	1	14	752	22	730	182	548	53
24-Jan-2025	11	2	1	14	957	20	937	182	755	78
31-Jan-2025	11	2	1	14	862	21	841	184	657	60
07-Feb-2025	11	2	1	14	828	9	819	180	639	73
14-Feb-2025	11	2	1	14	746	8	738	180	558	68
21-Feb-2025	11	2	1	14	778	7	771	181	590	52
28-Feb-2025	11	2	1	14	718	6	712	180	532	58
07-Mar-2025	11	2	1	14	679	6	673	178	495	56
14-Mar-2025	11	2	1	14	664	6	658	175	483	56
21-Mar-2025	11	2	1	14	703	8	695	173	522	38
28-Mar-2025	11	2	1	14	775	9	766	173	593	55
04-Apr-2025	11	2	1	14	772	9	763	171	592	42
11-Apr-2025	11	2	1	14	804	9	795	169	626	63
18-Apr-2025	11	2	1	14	895	10	885	168	717	50
25-Apr-2025	11	2	1	14	962	9	953	162	791	54
02-May-2025	11	2	1	14	1094	9	1085	168	917	49
09-May-2025	11	2	1	14	1192	9	1183	171	1012	58
16-May-2025	11	2	1	14	1355	8	1347	178	1169	62
23-May-2025	11	2	1	14	1453	8	1445	181	1264	69
30-May-2025	11	2	1	14	1477	9	1468	184	1284	58
06-Jun-2025	11	2	1	14	1520	8	1512	176	1336	65
13-Jun-2025	11	2	1	14	1524	8	1516	172	1344	52
20-Jun-2025	11	2	1	14	1543	9	1534	179	1355	46
27-Jun-2025	11	2	1	14	1425	9	1416	179	1237	35
04-Jul-2025	11	2	1	14	1394	9	1385	202	1183	53
11-Jul-2025	11	2	1	14	1191	9	1182	201	981	50
18-Jul-2025	11	2	1	14	1246	9	1237	198	1039	58