

Friday Report – overview and contents

The pages in The Friday Report are about adult offenders in Georgia's prisons and jails. They contain statistical snapshots and trends in the populations and movements of offenders in the state prison system, on probation, on parole, and in local jails. Information comes from databases of the Georgia Department of Corrections (GDC) and the Board of Pardons and Paroles, and from data provided by local jailers. Information is summarized into tables in the GDC/Parole Data Warehouse, and is extracted into these pages each Friday. Pages are organized according to the table that supplied the data.

The Monthly Research Table, named "MO_RESRCH" or simply "MO", contains data about state prisoners, grouped into statistically interesting categories. The table contains one record per month, from January 2000 to the present. Despite its being "monthly", it is updated weekly, because some data trickles in for several weeks before it becomes stable history.	
Page	Contents
MO-01	Clemencies and maxouts. Monthly graph from 2000 to present shows the monthly departures from prison via actions by the Georgia Parole Board (clemencies), and via service of 100% of the court ordered sentence (maxouts)
MO-02	48 months of releases. Table shows counts and percentages of releases via clemencies and maxouts, with and without probation to follow, for each of the past 48 months.
MO-03	Methamphetamine. Monthly graph from 2000 to present shows admissions, departures, population, and percent of population of inmates with a current offense of methamphetamine possession, sale, manufacturing, or trafficking, and the changing racial composition of the methamphetamine population.
MO-04	Non-violent first incarcerants. Monthly graph from 2000 to present shows admissions, departures, population, and percent of population of inmates without violent or sex crimes, who are serving their first Georgia felony incarceration.
MO-05	Seven Deadly Sins. Monthly graph from 2000 to present shows admissions, departures, population, and percent of population of inmates convicted of kidnapping, armed robbery, rape, aggravated sodomy, aggravated sexual battery, and aggravated child molestation, for whom especially severe penalties are prescribed.
MO-06	48 months of inmate subpopulations. Table shows number and percentage of white and non-white inmates with methamphetamine offenses, and non-violent first incarcerants, and inmates convicted of the Seven Deadly Sins.
MO-07	Inmate age overview. Line graph shows the average age of the inmate population, by month from 2000 to the present. Pie chart shows the number of currently active inmates in their teens, twenties, thirties, forties, fifties, and age sixty+.
MO-08	Counts by age group. Graphs show the count, by month from 2000 to the present, of inmates in their teens, twenties, thirties, forties, fifties, and age sixty+.
MO-09	Percentages by age group. Graphs show the <i>percentages</i> , by month from 2000 to the present, of inmates in their teens, twenties, thirties, forties, fifties, and age sixty+.
MO-10	48 months of inmate ages. Table shows average age of the standing population, and counts and percentages of teens, twenties, thirties, forties, fifties, and sixty+, for each of the past 48 months.

Friday Report – overview and contents (*continued*)

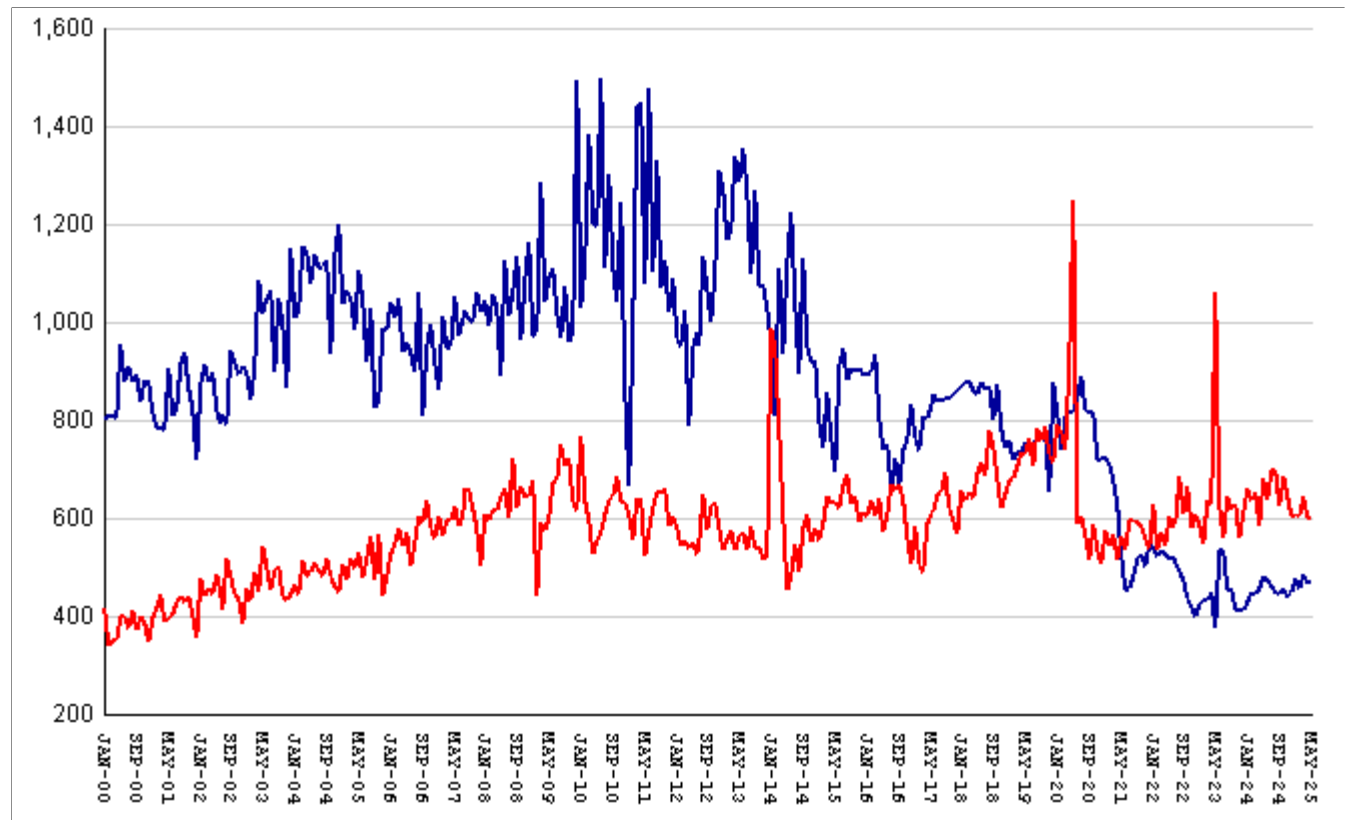
The MSR Table is based on the Management Summary Report (MSR), a snapshot report posted each week in GDC's Scribe database. MSR_RESRCH gathers that data into weekly trends, with one record for each Friday since March 20th, 2009.	
Page	Contents
MSR-01	All housed offenders. Weekly graph from March 20, 2009 to present, showing counts of inmates in state prisons, transitional centers, county prisons, private prisons, inmate boot camps, parole revocation centers, probation Residential Substance Abuse Treatment (RSAT), probation boot camps, probation detention centers, plus the inmate jail backlog and probationers in jail waiting for state facilities.
MSR-02	Probationers in jail. Weekly graph from March 20, 2009 to present, showing counts of probationers in local jails awaiting placement in probation detention centers, probation RSAT centers, and probation boot camps.
MSR-03	State inmates in jail. Weekly graph from March 20, 2009 to present, showing counts of state inmates in local jails awaiting placement in state prison facilities – including those who have not yet been assigned to a diagnostic center, those whose transportation has been delayed for some reason, and those who are ready to be picked up.
MSR-04	Female state inmates in jail. Weekly graph from March 20, 2009 to present, showing counts of female state inmates awaiting placement in a state prison for females.
MSR-05	52-week table: housed offenders. Data for each of the past 52 weeks, showing total prison inmates, parolees in revocation centers, probationers in RSAT/boot camp/detention centers, inmate jail backlog, probationers in jail waiting for facilities, with subtotals.
MSR-06	52-week table: state prisoners. Data for each of the past 52 weeks, showing inmates in state prisons, transition centers, county prisons, pre-release centers, private prisons, and inmate boot camps, with subtotals.
MSR-07	52-week table: waiting in jail. Data for each of the past 52 weeks, showing probationers waiting for detention centers, RSAT, and boot camp; and state prisoners not yet assigned to diagnostic centers, in admission process, with delayed transport, and ready for pickup, with subtotals.

The DCA table consists mainly of data submitted from each of Georgia's 140+ local jails, via the Georgia Crime Information Center (GCIC) to the Georgia Department of Community Affairs (DCA), which publishes its <u>County Jail Inmate Population Report</u> on its web site each month. GDC has collected summary statewide data from this report every month since its inception in January, 1993. The table also contains the inmate jail backlog as computed by GDC for the last Friday of each month, for comparison with the jailers' count of state inmates. Although nominally a monthly table, DCA_RESRCH is updated weekly to insure that the DCA data is correctly synchronized with the GDC jail backlog data.	
Page	Contents
DCA-01	Jail composition. Monthly graph from 1993 to the present shows trends in the numbers of unsentenced inmates, state inmates, county inmates, and other inmates.
DCA-02	Two views of jail backlog. Monthly graph from 1993 to present compares jailers' count of "state inmates" with GDC's count of the "inmate jail backlog", and explains that both are valid counts of different phenomena.
DCA-03	48-month table: local jails. Data from Georgia jailers for each of the past 48 months, showing total jail population, capacity, utilization, and number and percent of unsentenced inmates, state inmates, county inmates, and other inmates.

Releases by clemency and maxout, Jan-2000 to May-2025

There are two main ways of being released from a Georgia prison -- by actions of the Board of Pardons and Paroles ("Clemencies") and by service of 100% of the court-ordered sentences ("Maxouts"). "Clemency" includes paroles, reprieves, commutations, and transfer to other confinement prior to expiration of sentence.

"Other Releases" includes deaths, and sentences modified or overturned by the courts. Clemencies and maxouts may or may not be followed by periods of probation.



A. Clemency with probation to follow	RISES BY	15	from	408	to	423
B. Clemency only	falls by	17	from	63	to	46
C. Maxout with probation to follow	falls by	6	from	556	to	550
D. Maxout only (unsupervised)	RISES BY	9	from	46	to	55
E. Other releases	RISES BY	8	from	18	to	26
F. Total releases (A+B+C+D+E)	RISES BY	9	from	1091	to	1100
G. Total clemencies (A+B) (top line)	falls by	2	from	471	to	469
H. Total maxouts(C+D) (bottom line)	RISES BY	3	from	602	to	605
I. % of releases by clemency (G/F)	falls by	.53%	from	43.17%	to	42.64%
J. % of releases by maxout (H/F)	falls by	.18%	from	55.18%	to	55%
K. Supervised releases (A+B+C)	falls by	8	from	1027	to	1019
L. % unsupervised releases (D/F)	RISES BY	.78%	from	4.22%	to	5%
M. % supervised releases (K/F)	falls by	1.49%	from	94.13%	to	92.64%

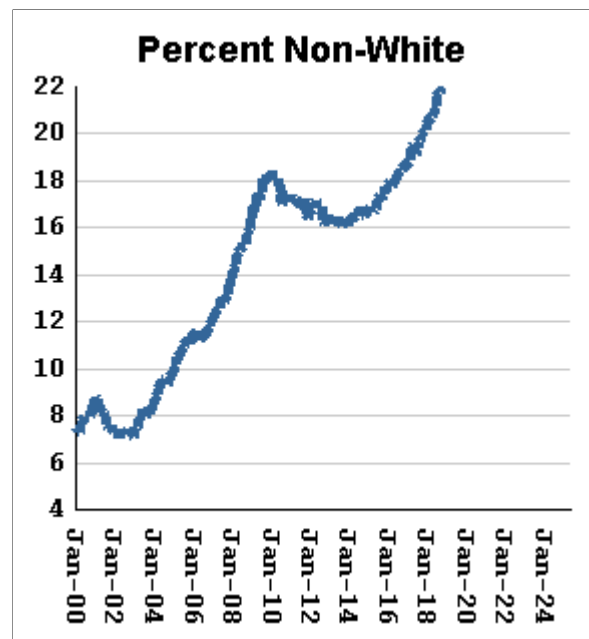
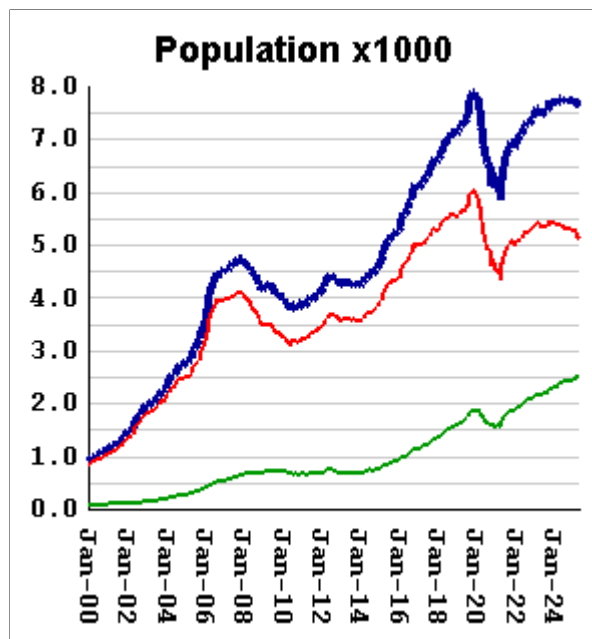
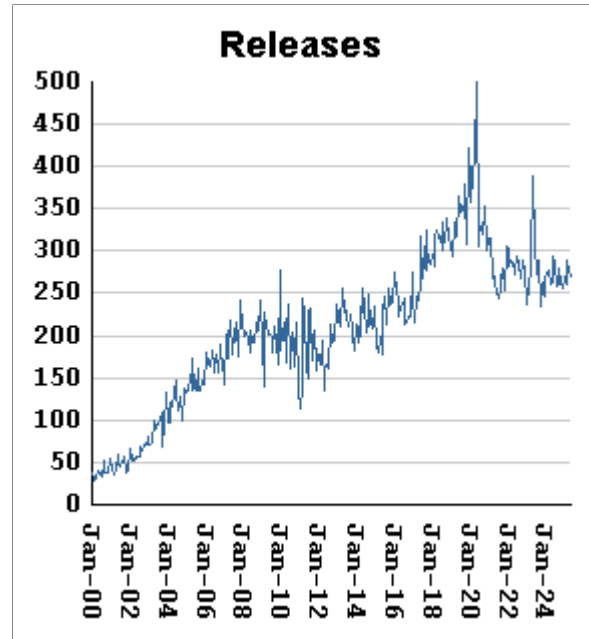
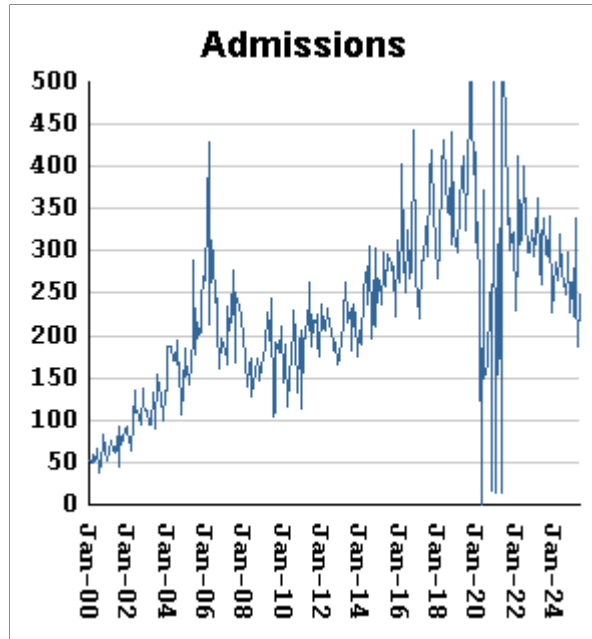
Monthly releases from prison by type of release, for the past 48 months

Month	A	B	C	D	E	F	G	H	I	J
	Clemency + Prob	Clemency Only	Maxout + Prob	Maxout Only	Other Rels	Total Releases (A+B+C+D+E)	Total Clemency (A+B)	Total Maxout (C+D)	Percent Clemency (G/F)	Percent Maxout (H/F)
Jun-21	367	85	467	68	21	1008	452	535	44.84%	53.08%
Jul-21	392	65	533	64	19	1073	457	597	42.59%	55.64%
Aug-21	410	71	530	65	28	1104	481	595	43.57%	53.89%
Sep-21	439	80	522	68	32	1141	519	590	45.49%	51.71%
Oct-21	446	79	525	57	21	1128	525	582	46.54%	51.60%
Nov-21	425	79	494	64	18	1080	504	558	46.67%	51.67%
Dec-21	469	82	483	56	18	1108	551	539	49.73%	48.65%
Jan-22	459	80	552	75	26	1192	539	627	45.22%	52.60%
Feb-22	444	80	465	71	24	1084	524	536	48.34%	49.45%
Mar-22	460	73	515	56	16	1120	533	571	47.59%	50.98%
Apr-22	455	73	471	70	16	1085	528	541	48.66%	49.86%
May-22	439	79	540	63	26	1147	518	603	45.16%	52.57%
Jun-22	457	64	528	57	21	1127	521	585	46.23%	51.91%
Jul-22	442	68	530	59	14	1113	510	589	45.82%	52.92%
Aug-22	425	67	619	65	21	1197	492	684	41.10%	57.14%
Sep-22	397	78	549	59	18	1101	475	608	43.14%	55.22%
Oct-22	373	62	606	60	23	1124	435	666	38.70%	59.25%
Nov-22	367	53	525	53	19	1017	420	578	41.30%	56.83%
Dec-22	342	60	550	59	28	1039	402	609	38.69%	58.61%
Jan-23	375	51	526	60	23	1035	426	586	41.16%	56.62%
Feb-23	388	46	495	51	17	997	434	546	43.53%	54.76%
Mar-23	377	55	573	63	24	1092	432	636	39.56%	58.24%
Apr-23	390	57	574	53	26	1100	447	627	40.64%	57.00%
May-23	327	47	931	130	20	1455	374	1061	25.70%	72.92%
Jun-23	463	70	568	58	19	1178	533	626	45.25%	53.14%
Jul-23	461	72	514	45	25	1117	533	559	47.72%	50.04%
Aug-23	402	52	590	54	22	1120	454	644	40.54%	57.50%
Sep-23	403	55	576	44	10	1088	458	620	42.10%	56.99%
Oct-23	363	51	578	51	31	1074	414	629	38.55%	58.57%
Nov-23	356	55	494	64	19	988	411	558	41.60%	56.48%
Dec-23	367	46	554	57	21	1045	413	611	39.52%	58.47%
Jan-24	368	61	598	63	32	1122	429	661	38.24%	58.91%
Feb-24	396	51	578	59	24	1108	447	637	40.34%	57.49%
Mar-24	380	63	589	63	20	1115	443	652	39.73%	58.48%
Apr-24	411	46	529	56	33	1075	457	585	42.51%	54.42%
May-24	427	55	607	75	26	1190	482	682	40.50%	57.31%
Jun-24	410	63	577	59	23	1132	473	636	41.78%	56.18%
Jul-24	400	60	631	66	38	1195	460	697	38.49%	58.33%
Aug-24	381	68	640	58	19	1166	449	698	38.51%	59.86%
Sep-24	380	64	561	64	34	1103	444	625	40.25%	56.66%
Oct-24	401	58	631	55	28	1173	459	686	39.13%	58.48%
Nov-24	389	53	594	52	23	1111	442	646	39.78%	58.15%
Dec-24	391	58	557	47	33	1086	449	604	41.34%	55.62%
Jan-25	418	59	563	46	30	1116	477	609	42.74%	54.57%
Feb-25	399	57	545	61	17	1079	456	606	42.26%	56.16%
Mar-25	433	54	595	51	23	1156	487	646	42.13%	55.88%
Apr-25	408	63	556	46	18	1091	471	602	43.17%	55.18%
May-25	423	46	550	55	26	1100	469	605	42.64%	55.00%

Inmates with meth crimes, by month, Jan-2000 to May-2025

Methamphetamine is one of the most addictive drugs ever known. At first it induces intense euphoria, but with continued use causes severe depression and physical deterioration, including the dental catastrophe known as "meth mouth".

Georgia's meth epidemic peaked in 2007-2008, then declined, but is again growing. It started in the predominantly white northern counties, with blacks accounting for only about 5% of convictions. But black usage has expanded, and now accounts for about 15% of convictions.



Methamphetamine admissions

RISE BY 60 from 188 to 248

Methamphetamine releases

fall by 9 from 278 to 269

Methamphetamine population

falls by 21 from 7654 to 7633

Meth white population

falls by 61 from 5172 to 5111

Meth non-white population

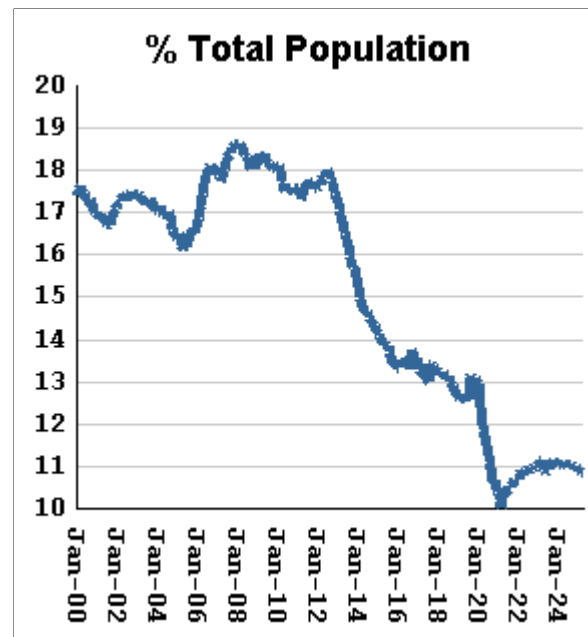
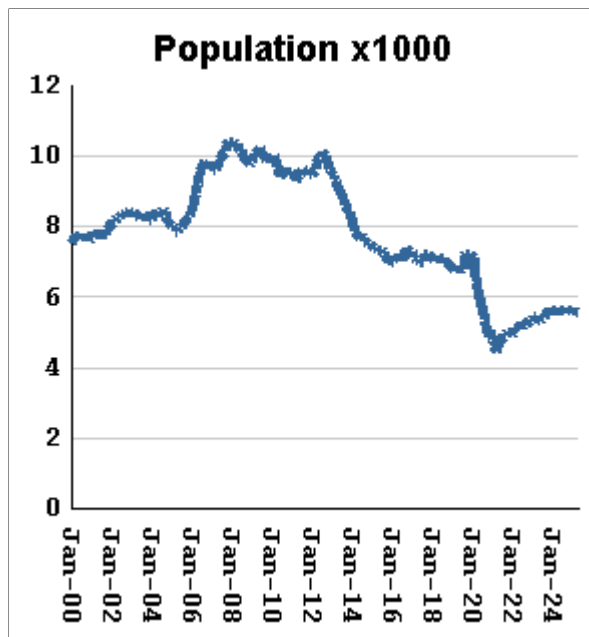
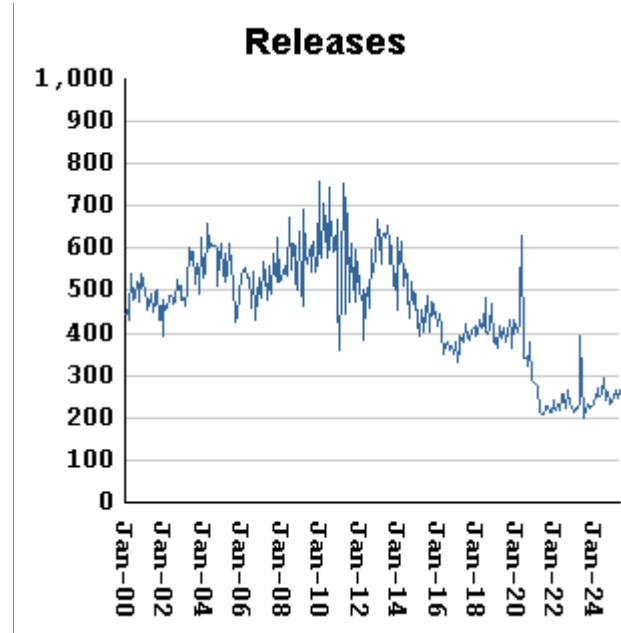
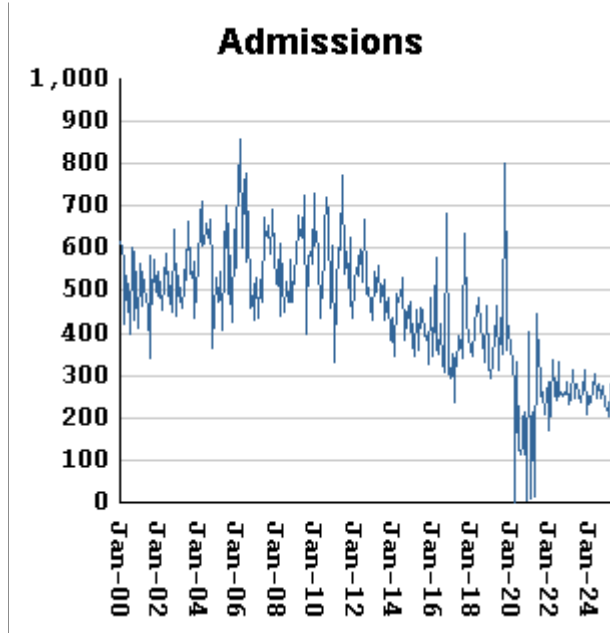
RISES BY 5 from 2517 to 2522

Percent meth inmates who are non-white

RISES BY .16 % from 32.88% to 33.04%

Non-violent first-incarcerants, by month, Jan-2000 to May-2025

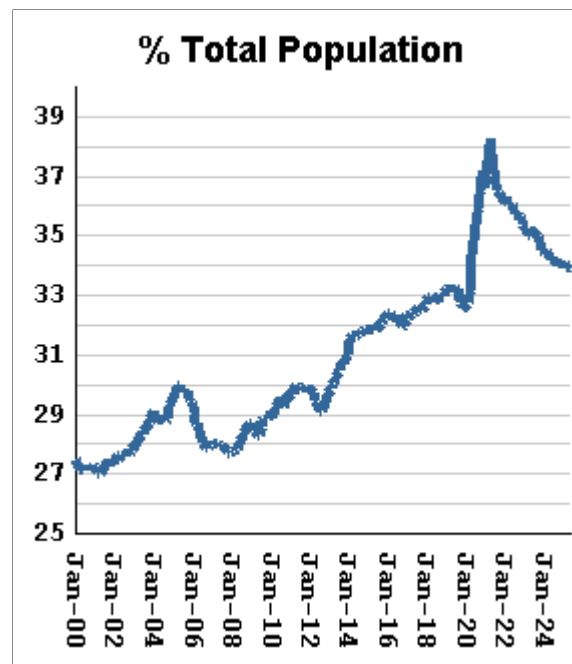
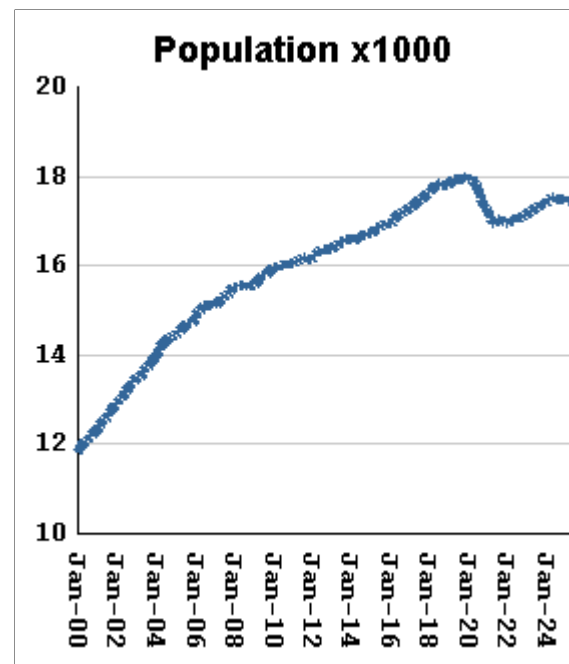
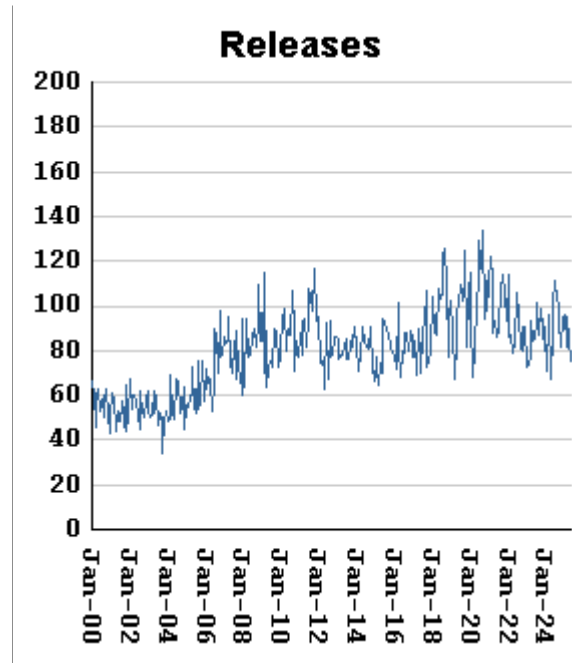
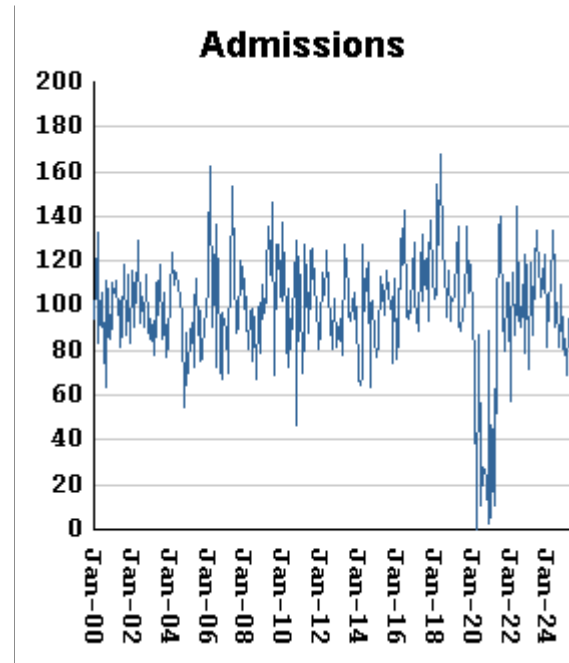
Historically, about one in six Georgia prison inmates has been a first-time incarcerant with a non-violent crime. In 2012 Georgia passed HB1176, which aimed to curb the growth of prison population by steering the least dangerous, least hardened offenders away from prison through pre-trial intervention, diversion, drug courts and treatment programs, and raising the dollar thresholds that define property felonies. The expectation is that over time, these measures will reduce the percentage of first-time non-violent incarcerants in prison.



Non-viol/1st-Incar admissions	RISE BY	48	from	211	to	259
Non-viol/1st-Incar releases	RISE BY	18	from	247	to	265
Non-viol/1st-Incar population	falls by	6	from	5595	to	5589
Non-viol/1st-Incar % of total population	falls by	.03 %	from	10.87%	to	10.84%

"Seven Deadly Sins" by month, Jan-2000 to May-2025

Tough legislation in 1995 imposed mandatory ten-year minimum terms for kidnapping, armed robbery, rape, aggravated sodomy, aggravated sexual battery, and aggravated child molestation, and a minimum of 25 years for murder. A second conviction resulted in life without parole. As predicted, longer prison terms caused population to climb steeply for about a decade. It then began to level off, as releases started catching up with admissions. The 2008 dip in percentage of total population (bottom right) was caused by the surge of methamphetamine convictions (Page MO-03). Note: these graphs include inmates convicted before 1995.



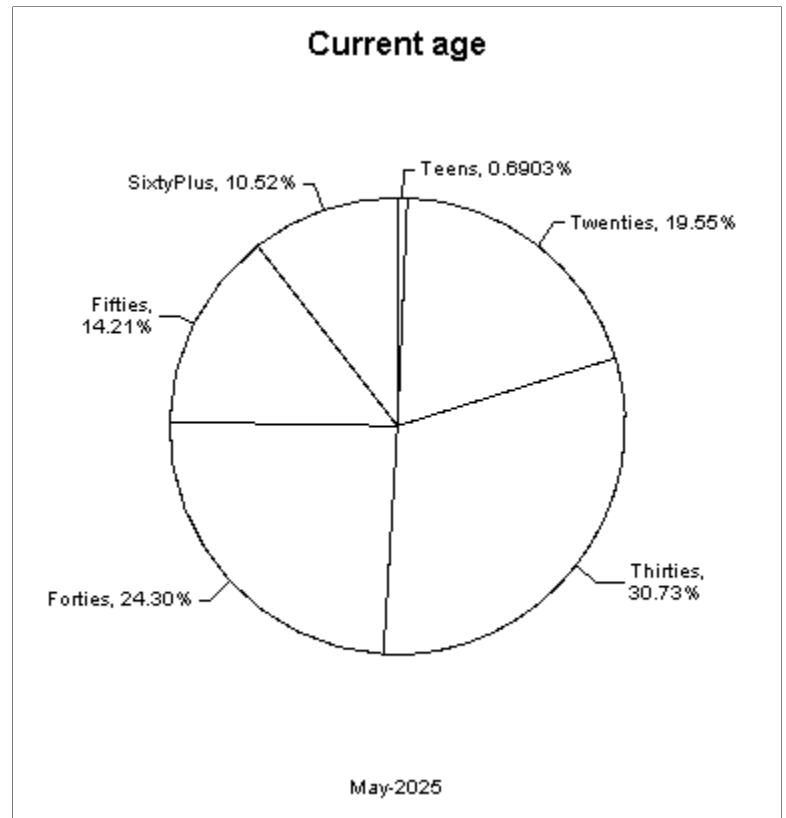
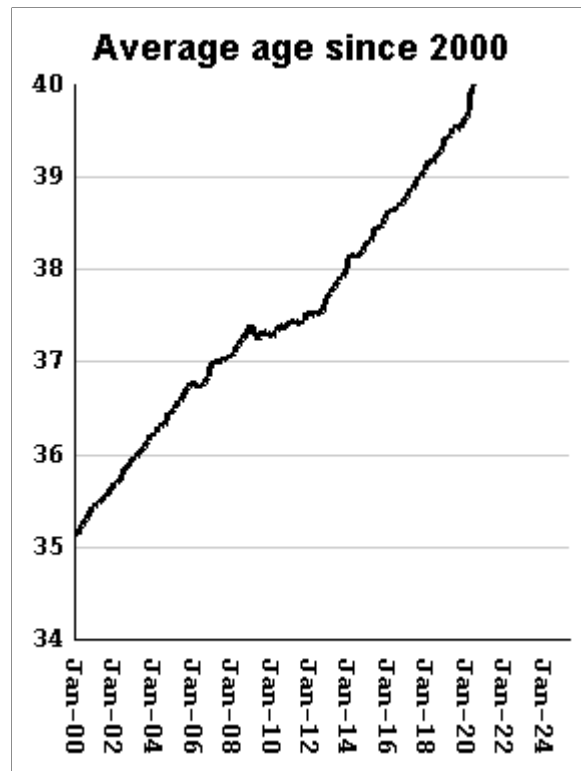
"Seven Deadly Sin" admissions	RISE BY	15	from	87	to	102
"Seven Deadly Sin" releases	fall by	10	from	85	to	75
"Seven Deadly Sin" population	RISES BY	27	from	17463	to	17490
"Seven Deadly Sin" % of total population	falls by	.02 %	from	33.93%	to	33.91%

Inmate subpopulation counts and percentages, for the past 48 months

Month	Methamphetamine						1st Incar Non-Violent		Seven Deadly Sins	
	Total Number	Total Percent	White Number	White Percent	Non White Number	Non White Percent	Number	Percent	Number	Percent
Jun-21	6462	14.07%	4758	73.63%	1744	26.99%	4775	10.40%	17004	37.03%
Jul-21	6683	14.37%	4897	73.28%	1793	26.83%	4860	10.45%	17055	36.67%
Aug-21	6760	14.49%	4952	73.25%	1824	26.98%	4893	10.49%	17034	36.51%
Sep-21	6831	14.60%	4994	73.11%	1844	26.99%	4928	10.53%	17032	36.41%
Oct-21	6854	14.64%	5010	73.10%	1851	27.01%	4926	10.52%	16998	36.32%
Nov-21	6920	14.75%	5063	73.16%	1873	27.07%	4980	10.61%	17003	36.24%
Dec-21	6937	14.74%	5068	73.06%	1876	27.04%	5022	10.67%	17020	36.17%
Jan-22	6863	14.70%	5022	73.17%	1877	27.35%	4967	10.64%	16963	36.33%
Feb-22	6890	14.74%	5045	73.22%	1903	27.62%	4985	10.67%	16962	36.30%
Mar-22	7013	14.89%	5079	72.42%	1941	27.68%	5090	10.80%	16990	36.06%
Apr-22	7034	14.91%	5092	72.39%	1949	27.71%	5130	10.87%	16998	36.02%
May-22	7076	14.98%	5118	72.33%	1982	28.01%	5112	10.82%	17018	36.02%
Jun-22	7198	15.10%	5191	72.12%	2016	28.01%	5205	10.92%	17079	35.82%
Jul-22	7229	15.12%	5200	71.93%	2036	28.16%	5200	10.88%	17067	35.70%
Aug-22	7284	15.23%	5255	72.14%	2059	28.27%	5236	10.95%	17062	35.68%
Sep-22	7315	15.27%	5237	71.59%	2084	28.49%	5222	10.90%	17090	35.67%
Oct-22	7323	15.28%	5265	71.90%	2089	28.53%	5251	10.96%	17078	35.64%
Nov-22	7359	15.27%	5312	72.18%	2090	28.40%	5279	10.95%	17121	35.52%
Dec-22	7392	15.24%	5307	71.79%	2091	28.29%	5338	11.00%	17145	35.34%
Jan-23	7447	15.31%	5339	71.69%	2128	28.58%	5354	11.01%	17144	35.25%
Feb-23	7508	15.38%	5372	71.55%	2156	28.72%	5381	11.02%	17189	35.20%
Mar-23	7590	15.44%	5423	71.45%	2173	28.63%	5469	11.13%	17210	35.01%
Apr-23	7582	15.43%	5428	71.59%	2160	28.49%	5472	11.13%	17204	35.00%
May-23	7454	15.23%	5334	71.56%	2150	28.84%	5338	10.91%	17239	35.22%
Jun-23	7459	15.16%	5308	71.16%	2157	28.92%	5327	10.83%	17287	35.13%
Jul-23	7525	15.24%	5370	71.36%	2196	29.18%	5379	10.90%	17309	35.06%
Aug-23	7544	15.26%	5337	70.74%	2212	29.32%	5397	10.91%	17329	35.05%
Sep-23	7548	15.21%	5335	70.68%	2217	29.37%	5431	10.95%	17346	34.96%
Oct-23	7646	15.31%	5405	70.69%	2254	29.48%	5518	11.05%	17358	34.76%
Nov-23	7726	15.33%	5451	70.55%	2279	29.50%	5608	11.13%	17391	34.50%
Dec-23	7708	15.28%	5438	70.55%	2274	29.50%	5591	11.08%	17398	34.49%
Jan-24	7696	15.25%	5427	70.52%	2296	29.83%	5606	11.11%	17389	34.45%
Feb-24	7707	15.25%	5408	70.17%	2302	29.87%	5593	11.06%	17423	34.47%
Mar-24	7695	15.17%	5377	69.88%	2321	30.16%	5597	11.04%	17435	34.38%
Apr-24	7732	15.16%	5384	69.63%	2362	30.55%	5619	11.02%	17502	34.32%
May-24	7788	15.21%	5394	69.26%	2397	30.78%	5673	11.08%	17527	34.24%
Jun-24	7767	15.16%	5378	69.24%	2392	30.80%	5657	11.04%	17517	34.19%
Jul-24	7749	15.12%	5353	69.08%	2422	31.26%	5644	11.01%	17507	34.15%
Aug-24	7740	15.09%	5325	68.80%	2417	31.23%	5653	11.02%	17486	34.10%
Sep-24	7758	15.14%	5330	68.70%	2429	31.31%	5653	11.04%	17482	34.13%
Oct-24	7777	15.13%	5349	68.78%	2428	31.22%	5664	11.02%	17499	34.04%
Nov-24	7743	15.08%	5319	68.69%	2424	31.31%	5657	11.01%	17498	34.07%
Dec-24	7750	15.08%	5312	68.54%	2438	31.46%	5646	10.98%	17488	34.02%
Jan-25	7702	15.02%	5271	68.44%	2431	31.56%	5596	10.91%	17461	34.06%
Feb-25	7782	15.11%	5297	68.07%	2485	31.93%	5622	10.91%	17473	33.92%
Mar-25	7744	15.02%	5255	67.86%	2499	32.27%	5631	10.92%	17461	33.87%
Apr-25	7654	14.87%	5172	67.57%	2517	32.88%	5595	10.87%	17463	33.93%
May-25	7633	14.80%	5111	66.96%	2522	33.04%	5589	10.84%	17490	33.91%

Overview of inmate age statistics, Jan-2000 to May-2025

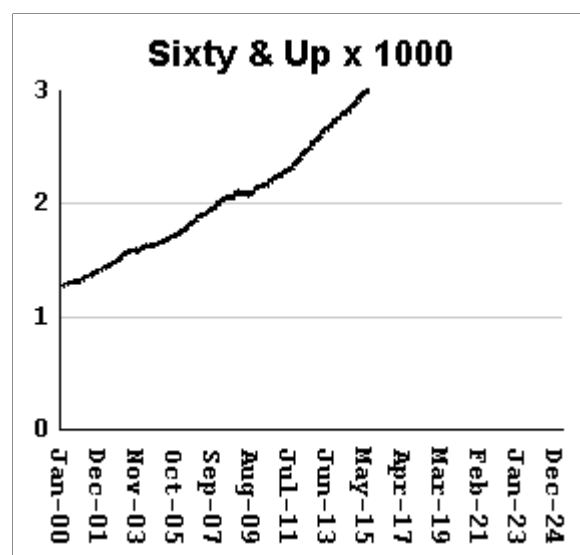
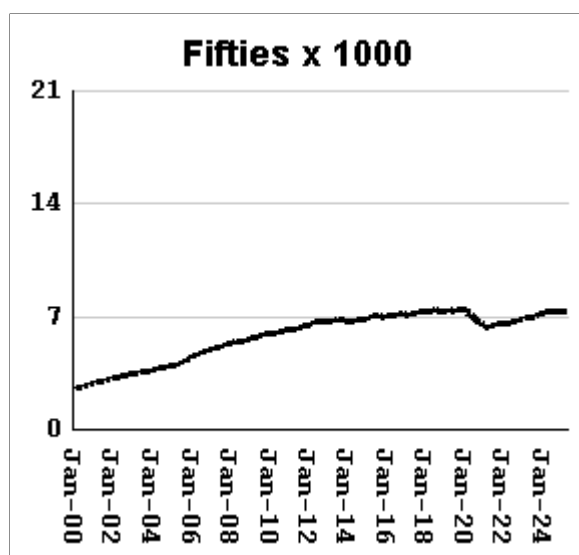
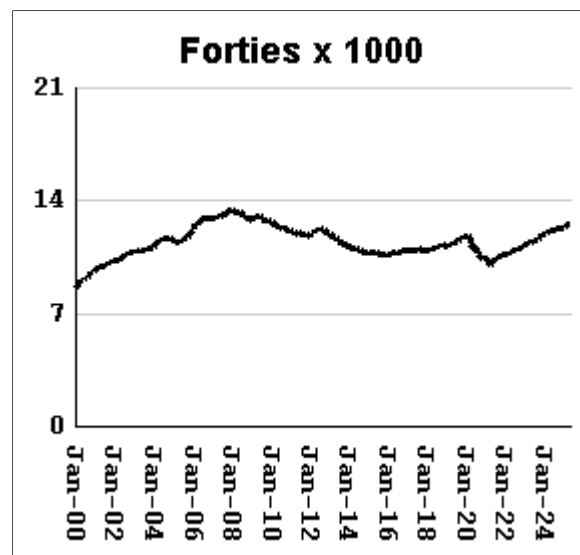
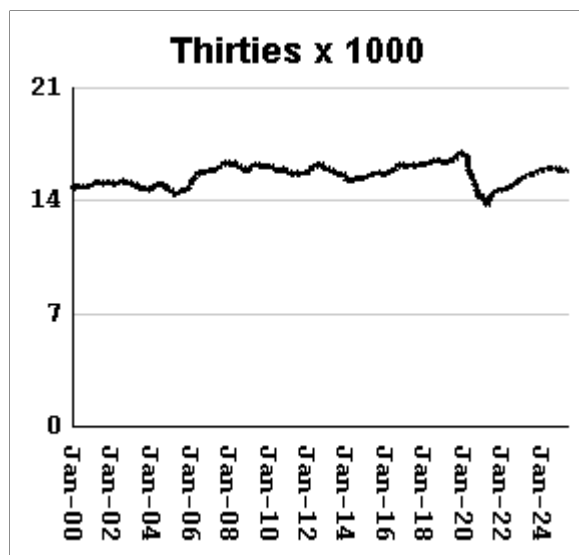
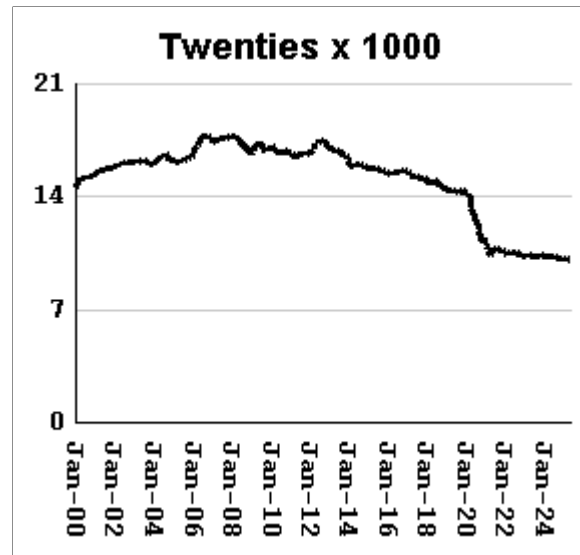
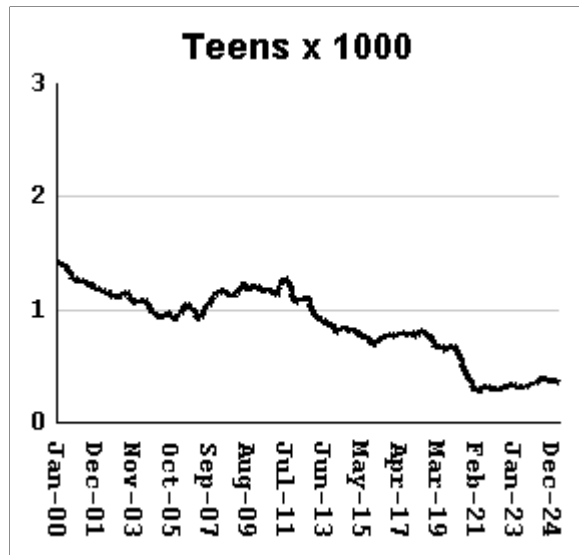
The "aging inmate population" is a concern in correctional systems throughout America, including Georgia. Here, the increase in inmate age is the result of several factors. Teenagers have been steered away from prison by increased usage of probation and other alternatives, at least for their first convictions. And there has been a surge of middle-aged male sex offenders due to the expanding "It's OK to tell" ethos. But most importantly, more severe sentence lengths and release policies have greatly increased the length of time that most offenders -- especially violent ones -- spend in prison, thereby increasing their average age.



Average age of active inmates	RISES BY	.03	from	41.89	to	41.92
Number in their teens	falls by	7	from	363	to	356
Percentage in their teens	falls by	.02%	from	.71%	to	0.69%
Number in their twenties	falls by	26	from	10,107	to	10,081
Percentage in their twenties	falls by	0.09%	from	19.64%	to	19.55%
Number in their thirties	RISES BY	14	from	15,833	to	15,847
Percentage in their thirties	falls by	0.04%	from	30.77%	to	30.73%
Number in their forties	falls by	4	from	12,536	to	12,532
Percentage in their forties	falls by	0.06%	from	24.36%	to	24.30%
Number in their fifties	falls by	5	from	7334	to	7,329
Percentage in their fifties	falls by	0.04%	from	14.25%	to	14.21%
Number age sixty and up	RISES BY	21	from	5407	to	5,428
Percentage age sixty and up	RISES BY	.01%	from	10.51%	to	10.52%

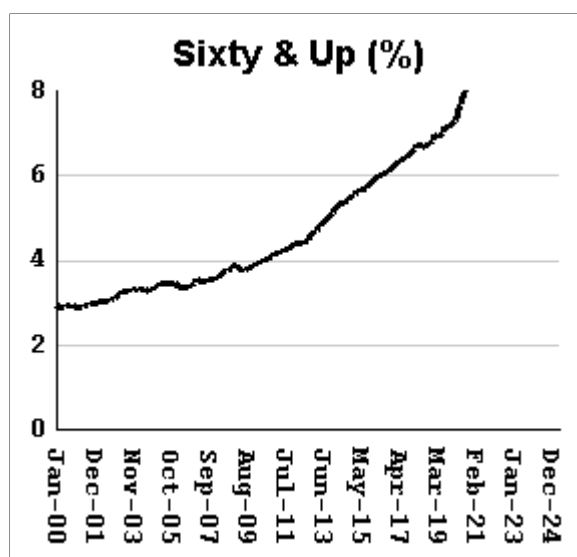
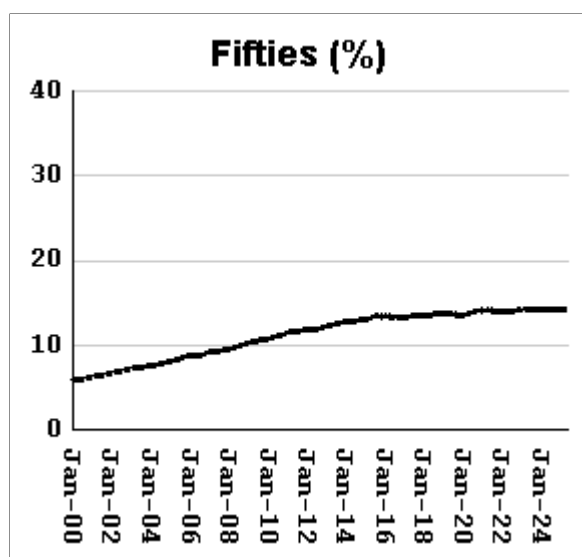
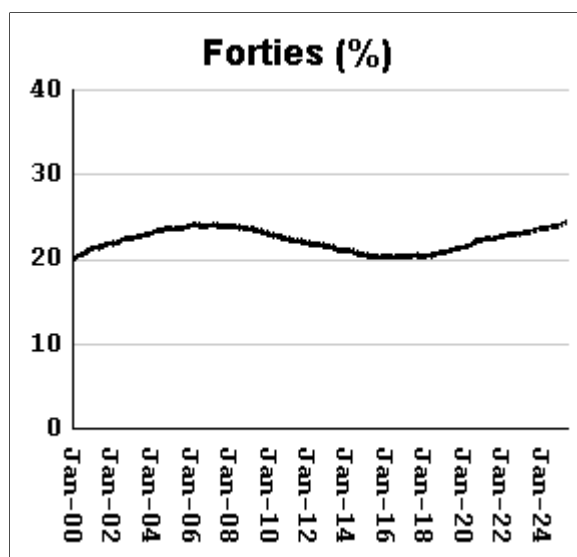
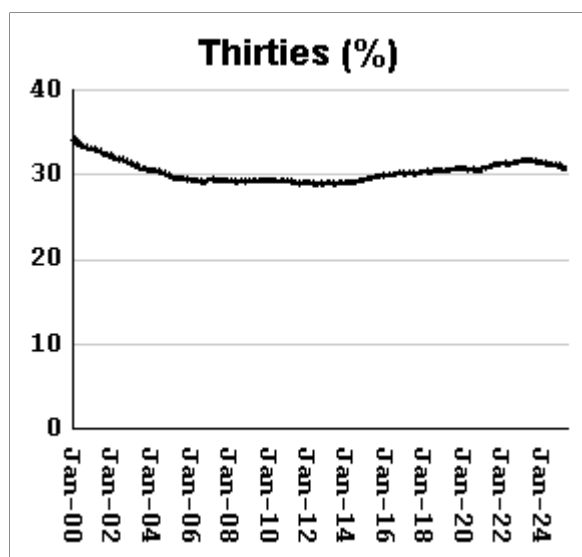
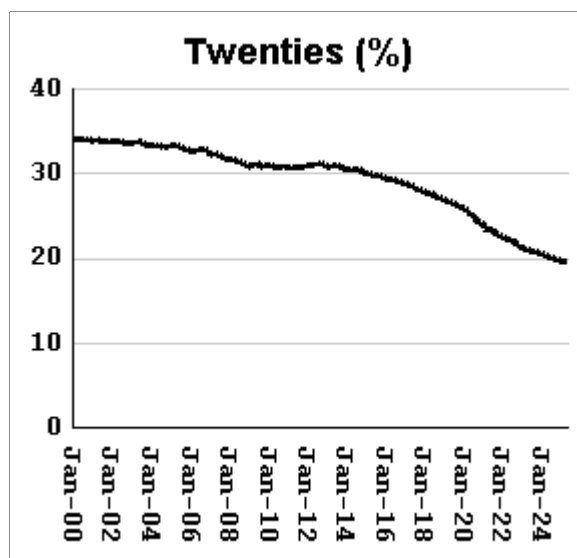
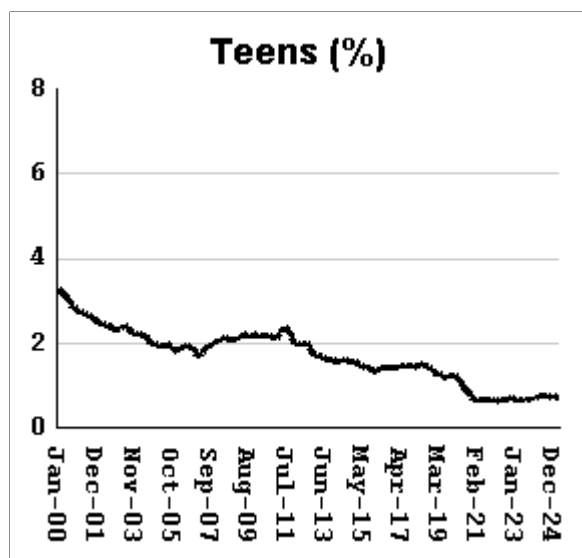
Monthly counts of inmates by age group, Jan-2000 to May-2025

Y-axis of Twenties/Thirties/Forties/Fifties runs from 0 to 21,000. Y-axis of Teens/Sixty+ runs from 0 to 3,000.



Monthly percentages of inmates by age group, Jan-2000 to May-2025

Y-axis of Twenties/Thirties/Forties/Fifties runs from 0% to 40%. Y-axis of Teens/Sixty+ runs from 0% to 8%

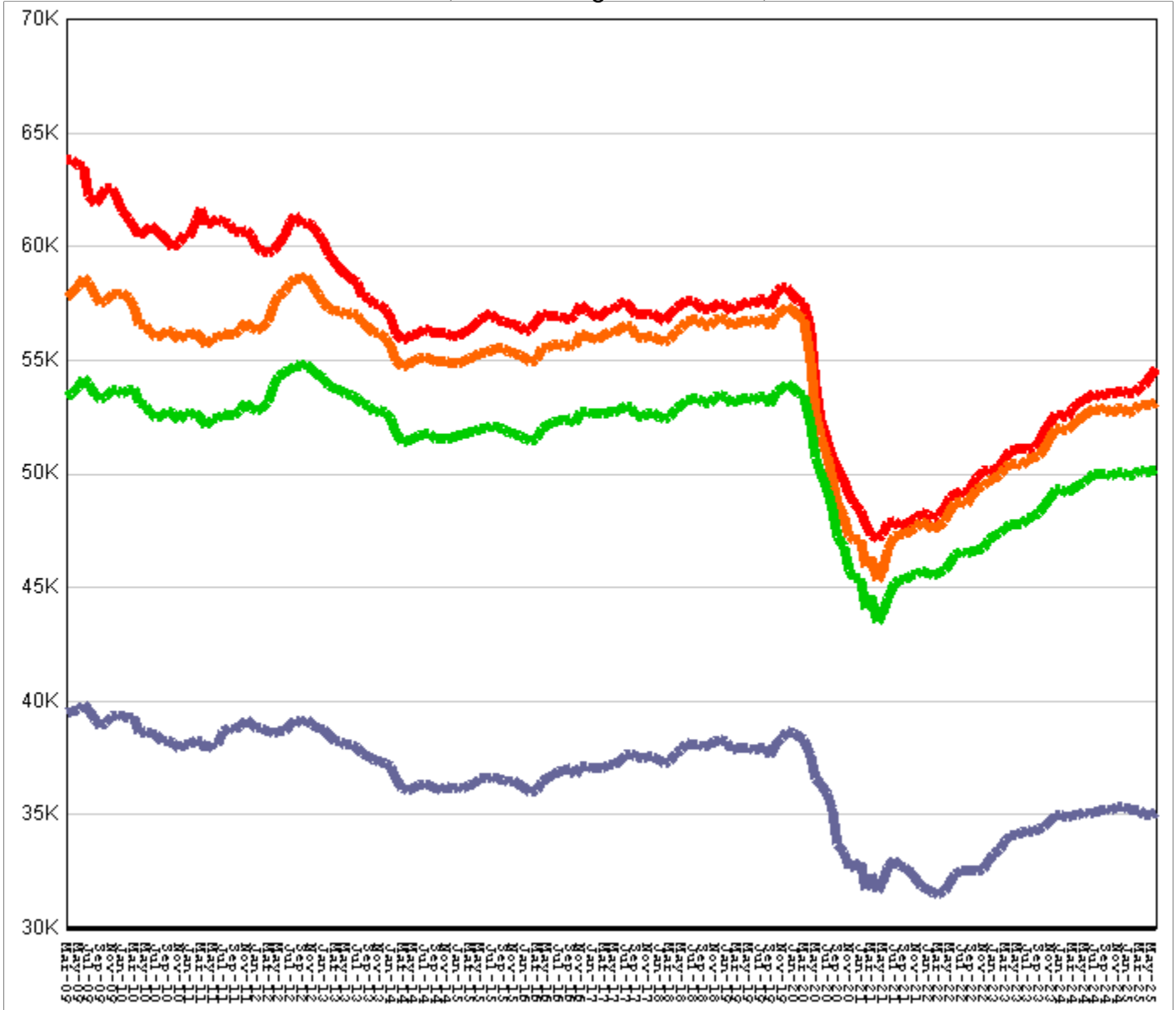


Inmate counts & percentages by age, for past 48 months

Month	Avg Age	Teens		Twenties		Thirties		Forties		Fifties		Sixty & Up	
		Num-ber	Per-cent	Num-ber	Per-cent	Num-ber	Per-cent	Num-ber	Per-cent	Num-ber	Per-cent	Num-ber	Per-cent
Jun-21	40.63	307	0.67%	10777	23.47%	14244	31.02%	10277	22.38%	6447	14.04%	4011	8.73%
Jul-21	40.62	317	0.68%	10850	23.33%	14426	31.02%	10383	22.33%	6491	13.96%	4054	8.72%
Aug-21	40.65	318	0.68%	10795	23.14%	14524	31.13%	10471	22.44%	6511	13.96%	4077	8.74%
Sep-21	40.69	317	0.68%	10737	22.95%	14593	31.20%	10494	22.43%	6520	13.94%	4132	8.83%
Oct-21	40.72	299	0.64%	10637	22.73%	14642	31.28%	10574	22.59%	6524	13.94%	4142	8.85%
Nov-21	40.74	299	0.64%	10625	22.64%	14700	31.33%	10651	22.70%	6532	13.92%	4158	8.86%
Dec-21	40.77	302	0.64%	10596	22.52%	14729	31.30%	10688	22.71%	6564	13.95%	4186	8.90%
Jan-22	40.83	293	0.63%	10473	22.43%	14636	31.35%	10641	22.79%	6568	14.07%	4194	8.98%
Feb-22	40.84	298	0.64%	10475	22.42%	14672	31.40%	10666	22.83%	6565	14.05%	4214	9.02%
Mar-22	40.84	295	0.63%	10522	22.33%	14763	31.34%	10729	22.77%	6575	13.96%	4243	9.01%
Apr-22	40.87	285	0.60%	10514	22.28%	14757	31.27%	10785	22.86%	6598	13.98%	4258	9.02%
May-22	40.9	282	0.60%	10499	22.22%	14808	31.34%	10818	22.90%	6599	13.97%	4294	9.09%
Jun-22	40.89	307	0.64%	10585	22.20%	14923	31.30%	10928	22.92%	6630	13.91%	4321	9.06%
Jul-22	40.93	316	0.66%	10540	22.05%	14966	31.31%	10970	22.95%	6672	13.96%	4348	9.10%
Aug-22	40.97	319	0.67%	10508	21.97%	15016	31.40%	11011	23.02%	6708	14.03%	4389	9.18%
Sep-22	41.01	316	0.66%	10426	21.76%	15039	31.39%	10982	22.92%	6736	14.06%	4421	9.23%
Oct-22	41.03	322	0.67%	10368	21.64%	15125	31.56%	11036	23.03%	6751	14.09%	4439	9.26%
Nov-22	41.05	334	0.69%	10391	21.56%	15226	31.59%	11138	23.11%	6798	14.10%	4484	9.30%
Dec-22	41.08	341	0.70%	10352	21.34%	15309	31.55%	11160	23.00%	6850	14.12%	4517	9.31%
Jan-23	41.11	329	0.68%	10329	21.24%	15389	31.64%	11198	23.03%	6870	14.13%	4560	9.38%
Feb-23	41.14	318	0.65%	10331	21.16%	15457	31.65%	11289	23.12%	6874	14.08%	4611	9.44%
Mar-23	41.13	318	0.65%	10384	21.13%	15546	31.63%	11377	23.15%	6923	14.09%	4612	9.38%
Apr-23	41.16	308	0.63%	10376	21.11%	15547	31.63%	11385	23.16%	6926	14.09%	4620	9.40%
May-23	41.18	314	0.64%	10331	21.11%	15548	31.76%	11360	23.21%	6918	14.13%	4635	9.47%
Jun-23	41.22	315	0.64%	10304	20.94%	15613	31.73%	11391	23.15%	6937	14.10%	4657	9.46%
Jul-23	41.25	322	0.65%	10314	20.89%	15685	31.77%	11502	23.30%	6976	14.13%	4692	9.50%
Aug-23	41.31	308	0.62%	10269	20.77%	15625	31.60%	11537	23.33%	6977	14.11%	4738	9.58%
Sep-23	41.33	318	0.64%	10283	20.73%	15642	31.53%	11602	23.38%	7002	14.11%	4774	9.62%
Oct-23	41.34	335	0.67%	10295	20.61%	15753	31.54%	11729	23.48%	7052	14.12%	4821	9.65%
Nov-23	41.36	336	0.67%	10389	20.61%	15854	31.45%	11858	23.52%	7119	14.12%	4857	9.64%
Dec-23	41.39	345	0.68%	10353	20.53%	15832	31.39%	11904	23.60%	7150	14.18%	4860	9.64%
Jan-24	41.42	350	0.69%	10336	20.48%	15909	31.52%	11916	23.61%	7181	14.23%	4881	9.67%
Feb-24	41.45	344	0.68%	10287	20.35%	15880	31.41%	11946	23.63%	7193	14.23%	4906	9.70%
Mar-24	41.48	351	0.69%	10299	20.31%	15901	31.35%	11993	23.65%	7231	14.26%	4944	9.75%
Apr-24	41.5	369	0.72%	10337	20.27%	15960	31.29%	12110	23.74%	7273	14.26%	4990	9.78%
May-24	41.53	382	0.75%	10334	20.19%	15998	31.25%	12133	23.70%	7305	14.27%	5041	9.85%
Jun-24	41.56	395	0.77%	10320	20.14%	16013	31.25%	12141	23.69%	7281	14.21%	5096	9.95%
Jul-24	41.6	394	0.77%	10305	20.10%	16039	31.29%	12220	23.84%	7292	14.22%	5144	10.03%
Aug-24	41.63	382	0.74%	10236	19.96%	16019	31.24%	12225	23.84%	7272	14.18%	5149	10.04%
Sep-24	41.67	382	0.75%	10190	19.89%	15954	31.14%	12248	23.91%	7282	14.22%	5172	10.10%
Oct-24	41.69	380	0.74%	10219	19.88%	15999	31.12%	12253	23.83%	7319	14.24%	5239	10.19%
Nov-24	41.73	375	0.73%	10152	19.77%	15988	31.13%	12286	23.92%	7285	14.18%	5275	10.27%
Dec-24	41.77	376	0.73%	10143	19.73%	15944	31.02%	12330	23.99%	7323	14.25%	5291	10.29%
Jan-25	41.81	381	0.74%	10090	19.68%	15811	30.84%	12344	24.08%	7333	14.30%	5311	10.36%
Feb-25	41.82	365	0.71%	10159	19.72%	15866	30.80%	12424	24.12%	7354	14.28%	5341	10.37%
Mar-25	41.84	377	0.73%	10160	19.71%	15894	30.83%	12509	24.26%	7357	14.27%	5366	10.41%
Apr-25	41.89	363	0.71%	10107	19.64%	15833	30.77%	12536	24.36%	7334	14.25%	5407	10.51%
May-25	41.92	356	0.69%	10081	19.55%	15847	30.73%	12532	24.30%	7329	14.21%	5428	10.52%

All housed offenders under GDC jurisdiction

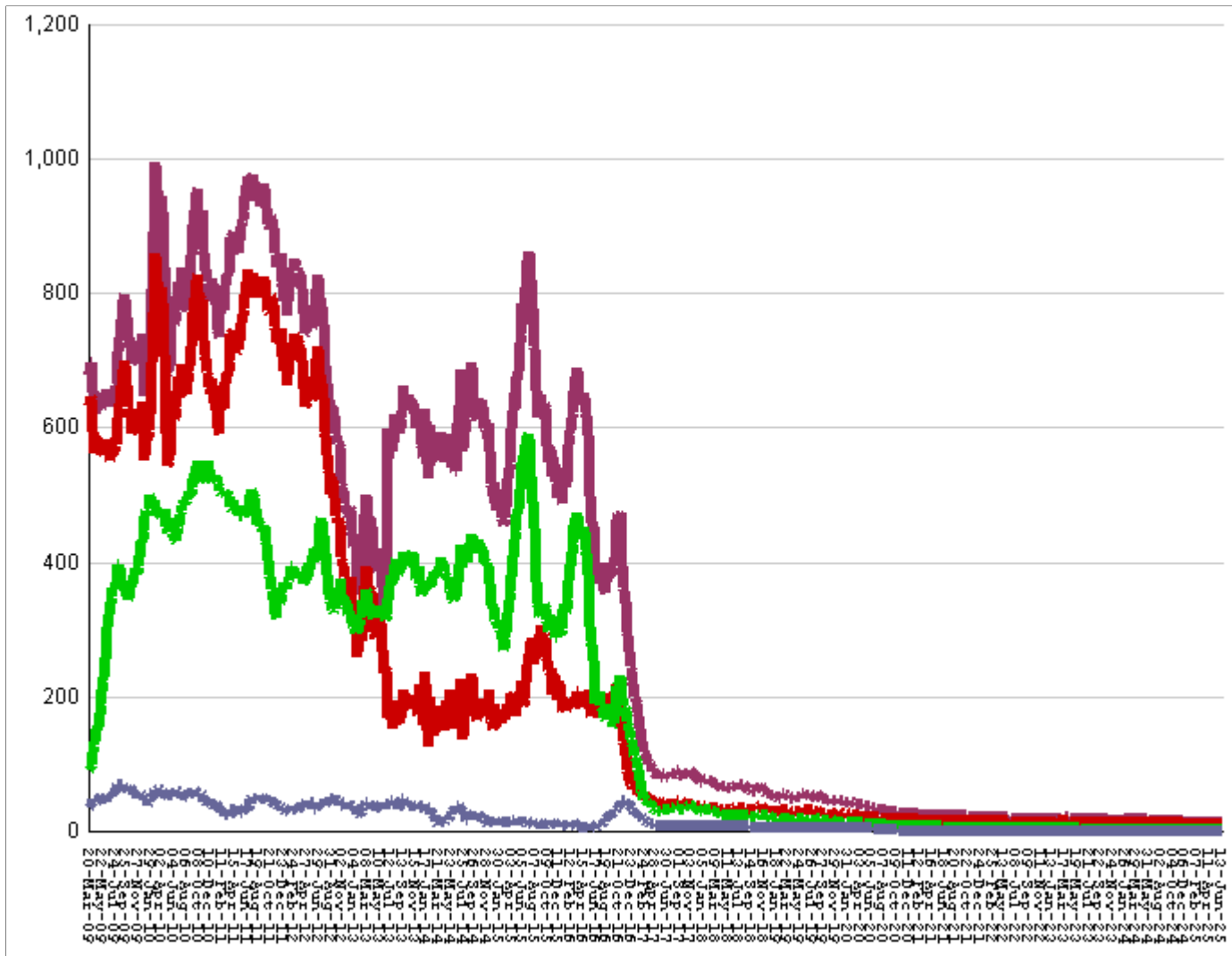
March 20, 2009 through June 27, 2025



All in bed + probs in jail + backlog	RISE BY	200	from	54,552	to	54,752
Probationers in jail	14	at	14
Inmate jail backlog	falls by	118	from	1543	to	1,425
All in beds: inmate + Prob + parole	RISE BY	318	from	52,995	to	53,313
Total probationers in beds	2,950	at	2,950
Probation detention centers	fall by	13	from	1,525	to	1,512
Probation boot camps	fall by		from		to	
Probation RSAT	RISE BY	13	from	1425	to	1,438
Parole revocation centers	fall by		from		to	
All in inmate beds: state + other	RISE BY	318	from	50,045	to	50,363
Other inmate facilities :	RISE BY	142	from	15,018	to	15,160
Inmate boot camps	0	at	0
Private prisons	RISE BY	46	from	7986	to	8,032
County prisons	RISE BY	41	from	4442	to	4,483
Transitional centers	RISE BY	55	from	2590	to	2,645
In state prisons only	RISE BY	176	from	35,027	to	35,203

Probationers in jail awaiting placement in facilities

March 20, 2009 through June 27, 2025



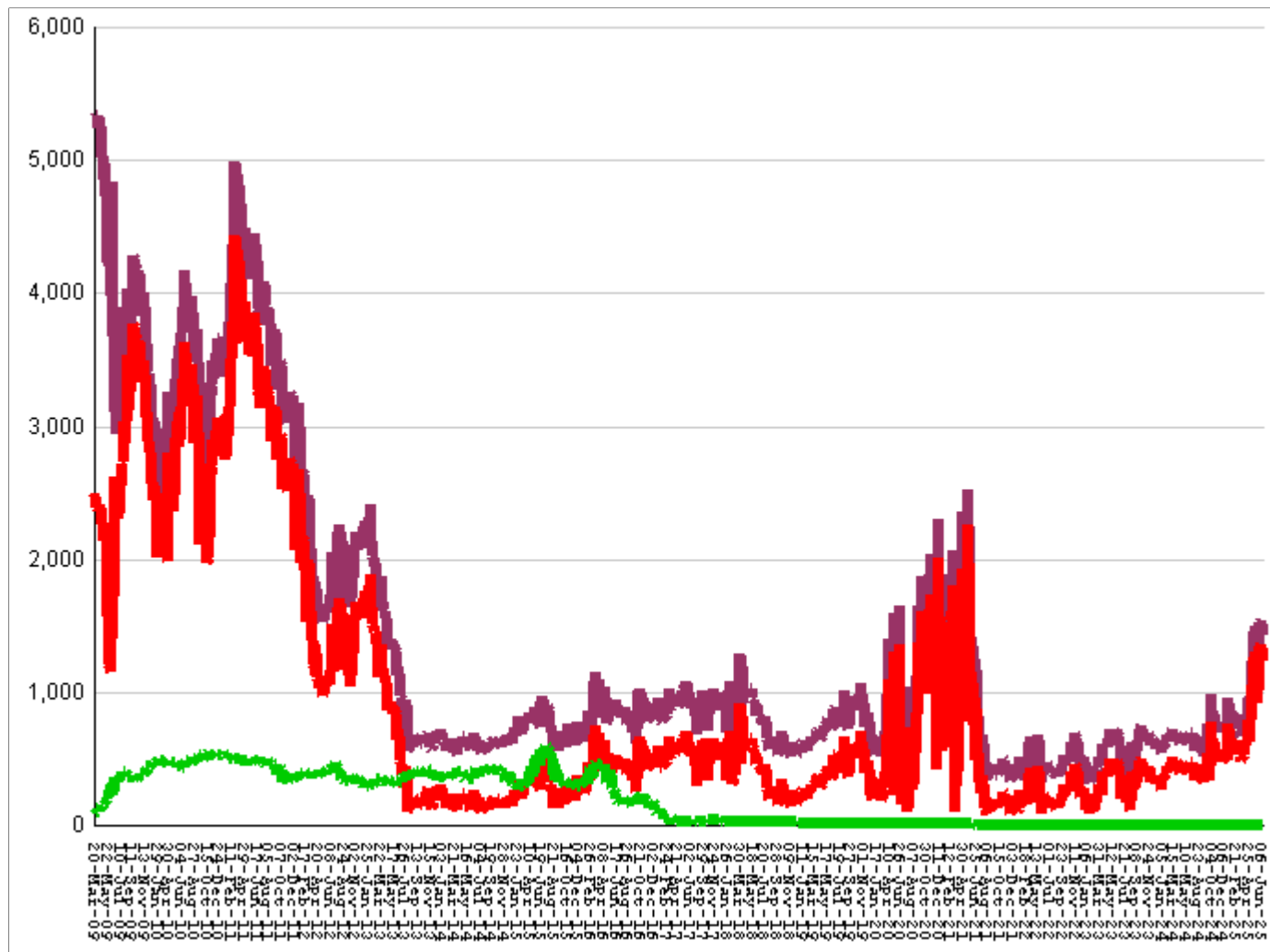
This graph shows, for each Friday since March 20 2009, the number of sentenced felony probationers who were waiting in jail for placement in facilities that GDC operates for housing probationers -- detention centers, probation residential substance abuse treatment (RSAT) centers, and probation boot camps. Counts include both those offenders sentenced directly from court, and those whose street probation was revoked.

Total probationers waiting in jail	level	at	14
... waiting for detention centers	level	at	11
... waiting for probation RSAT	level	at	2
... waiting for probation boot camps	level	at	1

The highest number of probationers waiting in jail was	994	on	05-MAR-10
... highest number waiting for detention centers was	859	on	05-MAR-10
... highest number waiting for probation RSAT was	592	on	10-JUL-15
... highest number waiting for probation boot camps was	70	on	18-SEP-09

State inmates in jail awaiting placement in facilities

March 20, 2009 through June 27, 2025



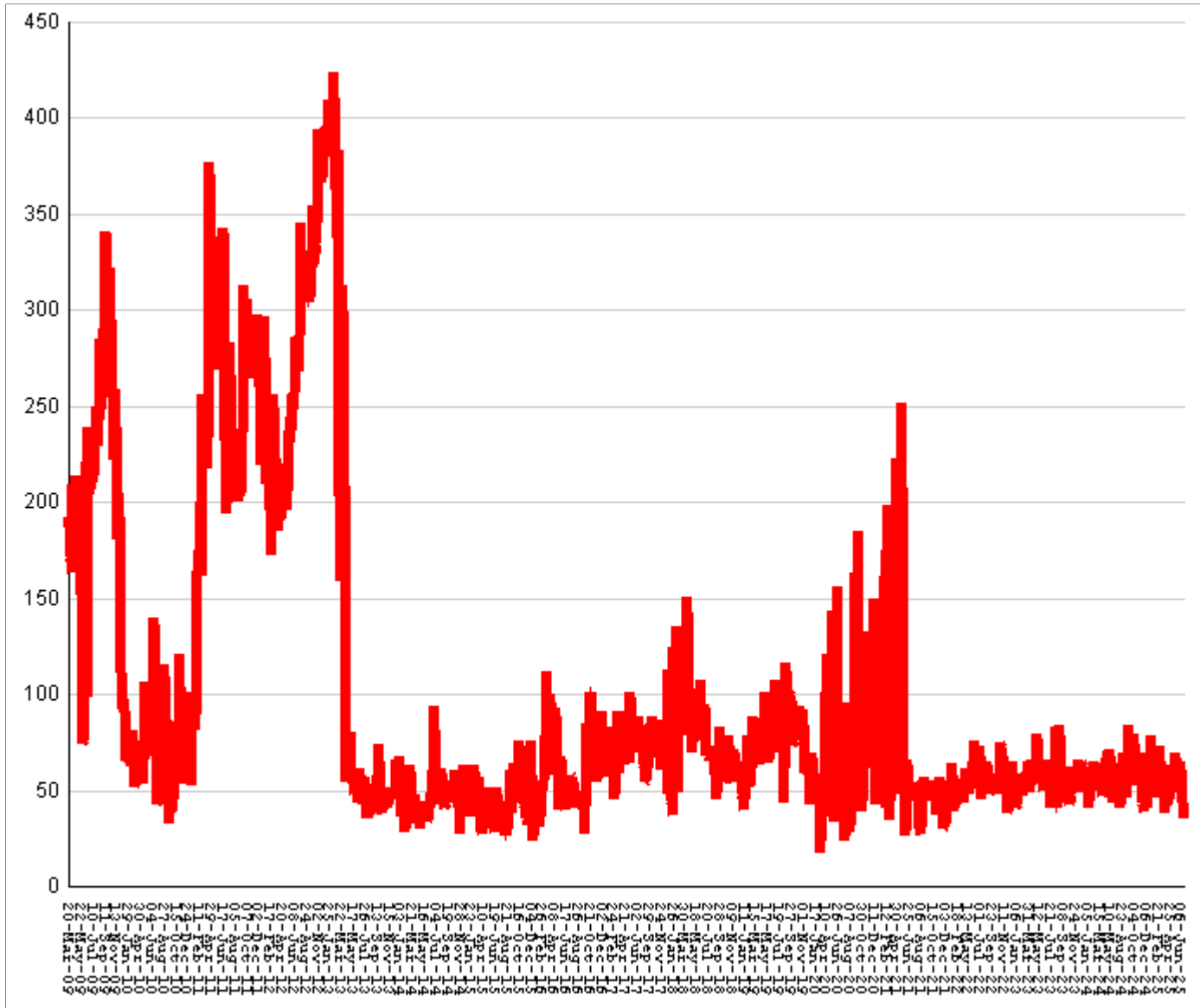
This graph shows, for each Friday since March 2009, the number of prisoners, probationers, and parolees in local jails who have been sentenced or revoked to state prison and whose documents have been received and verified by GDC. Most are almost immediately assigned to a diagnostic center, and are designated as in "admission processing". Of those a few hundred may be in the "transportation delayed" category because there is no room in the assigned diagnostic center, or because the inmate is being held for medical reasons, or for other court proceedings, or other reasons. Those remaining are "ready to be picked up".

Total state inmates waiting in jail	fall by	118	from	1543	to	1425
... not yet assigned to a diagnostic center	level	at	9
... total "in admission processing"	fall by	118	from	1534	to	1416
... with "transportation delayed"	level	at	179
... ready to be picked up	fall by	118	from	1355	to	1237

The highest number of state inmates waiting in jail was	5338	on	27-MAR-09
... highest number not asg to a diagnostic center was	2881	on	12-JUN-09
... highest number in admission processing was	4916	on	25-MAR-11
... highest number with transportation delayed was	645	on	14-JAN-11
... highest number ready to be pickup was	4435	on	25-MAR-11

Female state inmates in jail awaiting pickup

March 20, 2009 through June 27, 2025



This graph shows, for each Friday since March 2009, the number of female state prisoners in local jails who were assigned to diagnostic centers but had not yet been picked up.

Female state inmates in jails waiting picked up	fall by	11	from	46	to	35
The highest number of female inmates waiting in jail was		424	on	01-FEB-13		
The lowest number of female inmates waiting in jail was		17	on	20-MAR-20		

Summary of housed prisoners, parolees, and probationers

Week ending	Prison	Parole	Probation			Prison+parole+probation	Jail		Total
	Total inmates	Revocation centers	Prob RSAT	Boot camp	Detention		Inmate backlog	Probationers	Prison+parole+probation+jail
05-Jul-2024	49897		1493		1369	52759	690	16	53465
12-Jul-2024	50027		1472		1392	52891	549	17	53457
19-Jul-2024	50007		1496		1418	52921	588	17	53526
26-Jul-2024	49939		1433		1447	52819	631	17	53467
02-Aug-2024	49931		1424		1438	52793	598	17	53408
09-Aug-2024	49870		1418		1417	52705	526	17	53248
16-Aug-2024	49881		1429		1400	52710	609	17	53336
23-Aug-2024	49950		1453		1388	52791	598	17	53406
30-Aug-2024	50050		1466		1417	52933	598	17	53548
06-Sep-2024	49948		1452		1456	52856	549	17	53422
13-Sep-2024	49996		1457		1449	52902	535	17	53454
20-Sep-2024	50025		1467		1428	52920	660	17	53597
27-Sep-2024	49948		1515		1424	52887	755	17	53659
04-Oct-2024	49700		1465		1324	52489	989	17	53495
11-Oct-2024	49904		1490		1297	52691	857	16	53564
18-Oct-2024	49937		1494		1257	52688	769	16	53473
25-Oct-2024	49914		1461		1245	52620	766	16	53402
01-Nov-2024	49982		1487		1290	52759	760	16	53535
08-Nov-2024	49986		1504		1307	52797	724	15	53536
15-Nov-2024	50025		1480		1374	52879	710	15	53604
22-Nov-2024	50076		1484		1384	52944	710	15	53669
29-Nov-2024	50000		1511		1405	52916	751	15	53682
06-Dec-2024	50030		1493		1392	52915	688	14	53617
13-Dec-2024	50065		1466		1387	52918	711	14	53643
20-Dec-2024	50089		1505		1370	52964	692	14	53670
27-Dec-2024	50093		1487		1357	52937	702	14	53653
03-Jan-2025	50009		1474		1349	52832	794	14	53640
10-Jan-2025	49957		1478		1312	52747	778	14	53539
17-Jan-2025	50011		1456		1309	52776	752	14	53542
24-Jan-2025	49767		1407		1212	52386	957	14	53357
31-Jan-2025	49828		1453		1244	52525	862	14	53401
07-Feb-2025	49842		1474		1280	52596	828	14	53438
14-Feb-2025	49917		1494		1305	52716	746	14	53476
21-Feb-2025	49977		1475		1354	52806	778	14	53598
28-Feb-2025	50043		1464		1396	52903	718	14	53635
07-Mar-2025	50081		1449		1390	52920	679	14	53613
14-Mar-2025	50181		1476		1428	53085	664	14	53763
21-Mar-2025	50155		1474		1456	53085	703	14	53802
28-Mar-2025	50212		1477		1471	53160	775	14	53949
04-Apr-2025	50155		1483		1488	53126	772	14	53912
11-Apr-2025	50044		1473		1496	53013	804	14	53831
18-Apr-2025	50040		1449		1489	52978	895	14	53887
25-Apr-2025	50035		1454		1486	52975	962	14	53951
02-May-2025	50070		1461		1501	53032	1094	14	54140
09-May-2025	49969		1446		1504	52919	1192	14	54125
16-May-2025	50043		1435		1473	52951	1355	14	54320
23-May-2025	50107		1428		1501	53036	1453	14	54503
30-May-2025	50224		1437		1509	53170	1477	14	54661
06-Jun-2025	50133		1455		1482	53070	1520	14	54604
13-Jun-2025	50139		1440		1487	53066	1524	14	54604
20-Jun-2025	50045		1425		1525	52995	1543	14	54552
27-Jun-2025	50363		1438		1512	53313	1425	14	54752

Offenders housed in facilities for state prisoners

Week ending	In state prisons	In facilities other than state prisons						Total Inmates
		Transition centers	County prisons	Pre-rel centers	Private prisons	Inmate boot camps	Total others	
05-Jul-2024	35064	2729	4531		7573	0	14833	49897
12-Jul-2024	35172	2754	4521		7580	0	14855	50027
19-Jul-2024	35164	2754	4505		7584	0	14843	50007
26-Jul-2024	35139	2751	4478		7571	0	14800	49939
02-Aug-2024	35134	2752	4502		7543	0	14797	49931
09-Aug-2024	35109	2749	4482		7529	1	14761	49870
16-Aug-2024	35109	2747	4489		7535	1	14772	49881
23-Aug-2024	35149	2756	4507		7537	1	14801	49950
30-Aug-2024	35243	2761	4517		7528	1	14807	50050
06-Sep-2024	35195	2716	4508		7528	1	14753	49948
13-Sep-2024	35217	2752	4493		7533	1	14779	49996
20-Sep-2024	35238	2746	4506		7534	1	14787	50025
27-Sep-2024	35230	2724	4475		7518	1	14718	49948
04-Oct-2024	35111	2663	4437		7488	1	14589	49700
11-Oct-2024	35197	2679	4493		7534	1	14707	49904
18-Oct-2024	35211	2739	4469		7517	1	14726	49937
25-Oct-2024	35182	2745	4466		7520	1	14732	49914
01-Nov-2024	35239	2765	4442		7535	1	14743	49982
08-Nov-2024	35246	2756	4434		7549	1	14740	49986
15-Nov-2024	35323	2747	4403		7551	1	14702	50025
22-Nov-2024	35354	2755	4428		7538	1	14722	50076
29-Nov-2024	35292	2750	4431		7526	1	14708	50000
06-Dec-2024	35285	2756	4451		7537	1	14745	50030
13-Dec-2024	35339	2763	4429		7533	1	14726	50065
20-Dec-2024	35382	2755	4417		7534	1	14707	50089
27-Dec-2024	35380	2734	4433		7545	1	14713	50093
03-Jan-2025	35335	2721	4419		7533	1	14674	50009
10-Jan-2025	35311	2691	4428		7526	1	14646	49957
17-Jan-2025	35313	2677	4467		7553	1	14698	50011
24-Jan-2025	35190	2631	4416		7529	1	14577	49767
31-Jan-2025	35220	2660	4419		7528	1	14608	49828
07-Feb-2025	35212	2646	4438		7545	1	14630	49842
14-Feb-2025	35219	2641	4451		7605	1	14698	49917
21-Feb-2025	35197	2629	4488		7662	1	14780	49977
28-Feb-2025	35183	2622	4500		7737	1	14860	50043
07-Mar-2025	35161	2624	4515		7780	1	14920	50081
14-Mar-2025	35187	2617	4528		7848	1	14994	50181
21-Mar-2025	35144	2608	4487		7915	1	15011	50155
28-Mar-2025	35103	2612	4520		7976	1	15109	50212
04-Apr-2025	35047	2599	4524		7984	1	15108	50155
11-Apr-2025	34951	2596	4501		7995	1	15093	50044
18-Apr-2025	34906	2591	4515		8027	1	15134	50040
25-Apr-2025	34904	2590	4522		8018	1	15131	50035
02-May-2025	34954	2567	4511		8037	1	15116	50070
09-May-2025	34900	2544	4495		8029	1	15069	49969
16-May-2025	34954	2554	4502		8032	1	15089	50043
23-May-2025	35001	2577	4501		8028	0	15106	50107
30-May-2025	35065	2605	4511		8043	0	15159	50224
06-Jun-2025	35068	2587	4440		8038	0	15065	50133
13-Jun-2025	35092	2599	4416		8032	0	15047	50139
20-Jun-2025	35027	2590	4442		7986	0	15018	50045
27-Jun-2025	35203	2645	4483		8032	0	15160	50363

Offenders waiting in local jails for state facilities

Week ending	Probationers waiting in jail				State prisoners wating in jail					Assigned females
	.. for PDCs	.. for RSAT	.. for boot camps	Total	Total backlog	Not yet assigned	In adm process	Delayed transport	Ready for pickup	
05-Jul-2024	12	3	1	16	690	27	663	193	470	50
12-Jul-2024	13	3	1	17	549	28	521	188	333	41
19-Jul-2024	13	3	1	17	588	28	560	180	380	50
26-Jul-2024	13	3	1	17	631	29	602	183	419	54
02-Aug-2024	13	3	1	17	598	27	571	181	390	59
09-Aug-2024	13	3	1	17	526	28	498	179	319	46
16-Aug-2024	13	3	1	17	609	24	585	184	401	69
23-Aug-2024	13	3	1	17	598	24	574	185	389	61
30-Aug-2024	13	3	1	17	598	25	573	186	387	63
06-Sep-2024	13	3	1	17	549	25	524	182	342	59
13-Sep-2024	13	3	1	17	535	25	510	183	327	56
20-Sep-2024	13	3	1	17	660	26	634	182	452	84
27-Sep-2024	13	3	1	17	755	27	728	184	544	52
04-Oct-2024	13	3	1	17	989	25	964	183	781	79
11-Oct-2024	12	3	1	16	857	26	831	185	646	69
18-Oct-2024	12	3	1	16	769	25	744	188	556	57
25-Oct-2024	12	3	1	16	766	26	740	192	548	57
01-Nov-2024	12	3	1	16	760	25	735	186	549	69
08-Nov-2024	12	2	1	15	724	25	699	189	510	53
15-Nov-2024	12	2	1	15	710	25	685	187	498	53
22-Nov-2024	12	2	1	15	710	24	686	190	496	39
29-Nov-2024	12	2	1	15	751	24	727	187	540	43
06-Dec-2024	11	2	1	14	688	24	664	188	476	48
13-Dec-2024	11	2	1	14	711	21	690	184	506	57
20-Dec-2024	11	2	1	14	692	22	670	180	490	54
27-Dec-2024	11	2	1	14	702	23	679	178	501	41
03-Jan-2025	11	2	1	14	794	22	772	179	593	47
10-Jan-2025	11	2	1	14	778	22	756	180	576	46
17-Jan-2025	11	2	1	14	752	22	730	182	548	53
24-Jan-2025	11	2	1	14	957	20	937	182	755	78
31-Jan-2025	11	2	1	14	862	21	841	184	657	60
07-Feb-2025	11	2	1	14	828	9	819	180	639	73
14-Feb-2025	11	2	1	14	746	8	738	180	558	68
21-Feb-2025	11	2	1	14	778	7	771	181	590	52
28-Feb-2025	11	2	1	14	718	6	712	180	532	58
07-Mar-2025	11	2	1	14	679	6	673	178	495	56
14-Mar-2025	11	2	1	14	664	6	658	175	483	56
21-Mar-2025	11	2	1	14	703	8	695	173	522	38
28-Mar-2025	11	2	1	14	775	9	766	173	593	55
04-Apr-2025	11	2	1	14	772	9	763	171	592	42
11-Apr-2025	11	2	1	14	804	9	795	169	626	63
18-Apr-2025	11	2	1	14	895	10	885	168	717	50
25-Apr-2025	11	2	1	14	962	9	953	162	791	54
02-May-2025	11	2	1	14	1094	9	1085	168	917	49
09-May-2025	11	2	1	14	1192	9	1183	171	1012	58
16-May-2025	11	2	1	14	1355	8	1347	178	1169	62
23-May-2025	11	2	1	14	1453	8	1445	181	1264	69
30-May-2025	11	2	1	14	1477	9	1468	184	1284	58
06-Jun-2025	11	2	1	14	1520	8	1512	176	1336	65
13-Jun-2025	11	2	1	14	1524	8	1516	172	1344	52
20-Jun-2025	11	2	1	14	1543	9	1534	179	1355	46
27-Jun-2025	11	2	1	14	1425	9	1416	179	1237	35