

# Friday Report – overview and contents

The pages in The Friday Report are about adult offenders in Georgia's prisons and jails. They contain statistical snapshots and trends in the populations and movements of offenders in the state prison system, on probation, on parole, and in local jails. Information comes from databases of the Georgia Department of Corrections (GDC) and the Board of Pardons and Paroles, and from data provided by local jailers. Information is summarized into tables in the GDC/Parole Data Warehouse, and is extracted into these pages each Friday. Pages are organized according to the table that supplied the data.

The Monthly Research Table, named "MO_RESRCH" or simply "MO", contains data about state prisoners, grouped into statistically interesting categories. The table contains one record per month, from January 2000 to the present. Despite its being "monthly", it is updated weekly, because some data trickles in for several weeks before it becomes stable history.	
Page	Contents
MO-01	Clemencies and maxouts. Monthly graph from 2000 to present shows the monthly departures from prison via actions by the Georgia Parole Board (clemencies), and via service of 100% of the court ordered sentence (maxouts)
MO-02	48 months of releases. Table shows counts and percentages of releases via clemencies and maxouts, with and without probation to follow, for each of the past 48 months.
MO-03	Methamphetamine. Monthly graph from 2000 to present shows admissions, departures, population, and percent of population of inmates with a current offense of methamphetamine possession, sale, manufacturing, or trafficking, and the changing racial composition of the methamphetamine population.
MO-04	Non-violent first incarcerants. Monthly graph from 2000 to present shows admissions, departures, population, and percent of population of inmates without violent or sex crimes, who are serving their first Georgia felony incarceration.
MO-05	Seven Deadly Sins. Monthly graph from 2000 to present shows admissions, departures, population, and percent of population of inmates convicted of kidnapping, armed robbery, rape, aggravated sodomy, aggravated sexual battery, and aggravated child molestation, for whom especially severe penalties are prescribed.
MO-06	48 months of inmate subpopulations. Table shows number and percentage of white and non-white inmates with methamphetamine offenses, and non-violent first incarcerants, and inmates convicted of the Seven Deadly Sins.
MO-07	Inmate age overview. Line graph shows the average age of the inmate population, by month from 2000 to the present. Pie chart shows the number of currently active inmates in their teens, twenties, thirties, forties, fifties, and age sixty+.
MO-08	Counts by age group. Graphs show the count, by month from 2000 to the present, of inmates in their teens, twenties, thirties, forties, fifties, and age sixty+.
MO-09	Percentages by age group. Graphs show the <i>percentages</i> , by month from 2000 to the present, of inmates in their teens, twenties, thirties, forties, fifties, and age sixty+.
MO-10	48 months of inmate ages. Table shows average age of the standing population, and counts and percentages of teens, twenties, thirties, forties, fifties, and sixty+, for each of the past 48 months.

# Friday Report – overview and contents (*continued*)

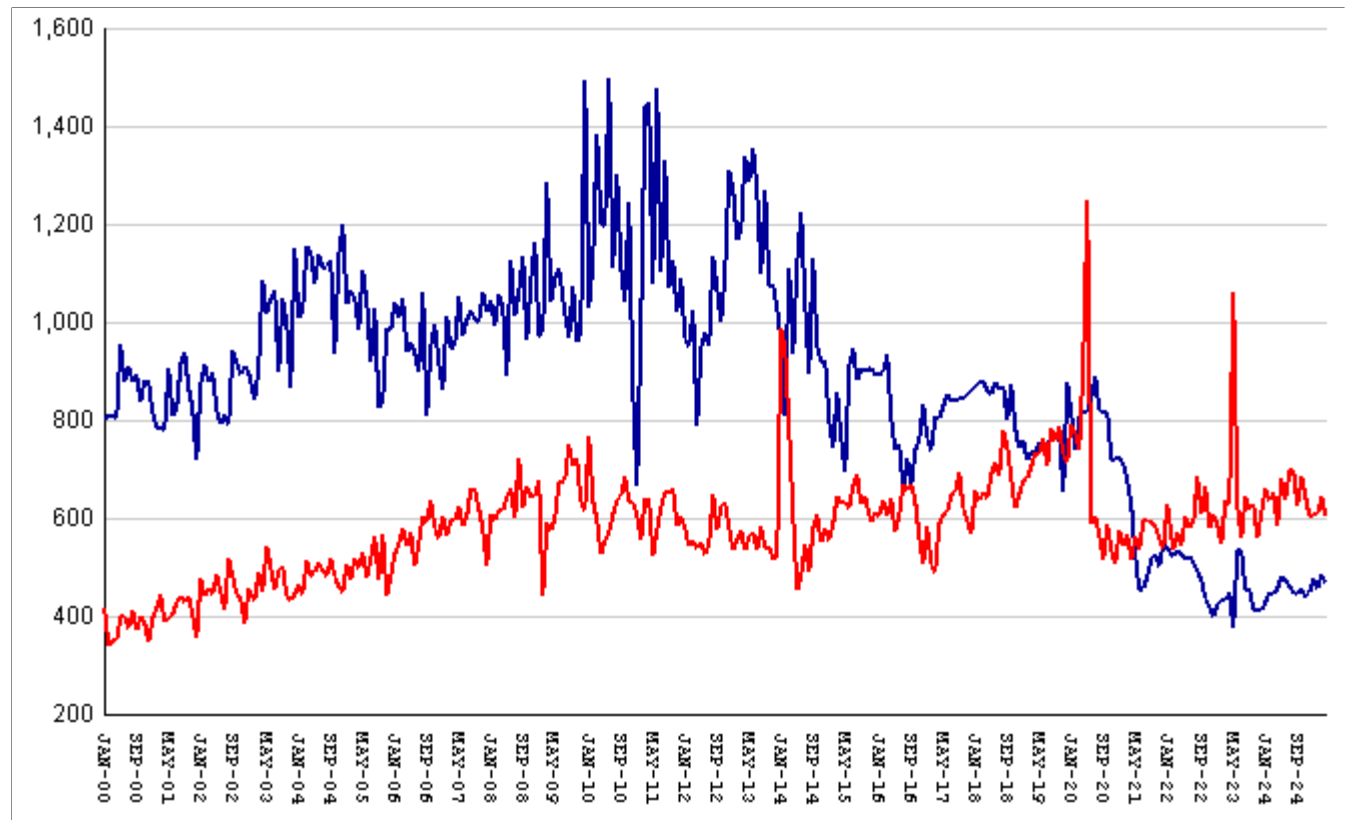
The MSR Table is based on the Management Summary Report (MSR), a snapshot report posted each week in GDC's Scribe database. MSR_RESRCH gathers that data into weekly trends, with one record for each Friday since March 20th, 2009.	
Page	Contents
MSR-01	All housed offenders. Weekly graph from March 20, 2009 to present, showing counts of inmates in state prisons, transitional centers, county prisons, private prisons, inmate boot camps, parole revocation centers, probation Residential Substance Abuse Treatment (RSAT), probation boot camps, probation detention centers, plus the inmate jail backlog and probationers in jail waiting for state facilities.
MSR-02	Probationers in jail. Weekly graph from March 20, 2009 to present, showing counts of probationers in local jails awaiting placement in probation detention centers, probation RSAT centers, and probation boot camps.
MSR-03	State inmates in jail. Weekly graph from March 20, 2009 to present, showing counts of state inmates in local jails awaiting placement in state prison facilities – including those who have not yet been assigned to a diagnostic center, those whose transportation has been delayed for some reason, and those who are ready to be picked up.
MSR-04	Female state inmates in jail. Weekly graph from March 20, 2009 to present, showing counts of female state inmates awaiting placement in a state prison for females.
MSR-05	52-week table: housed offenders. Data for each of the past 52 weeks, showing total prison inmates, parolees in revocation centers, probationers in RSAT/boot camp/detention centers, inmate jail backlog, probationers in jail waiting for facilities, with subtotals.
MSR-06	52-week table: state prisoners. Data for each of the past 52 weeks, showing inmates in state prisons, transition centers, county prisons, pre-release centers, private prisons, and inmate boot camps, with subtotals.
MSR-07	52-week table: waiting in jail. Data for each of the past 52 weeks, showing probationers waiting for detention centers, RSAT, and boot camp; and state prisoners not yet assigned to diagnostic centers, in admission process, with delayed transport, and ready for pickup, with subtotals.

The DCA table consists mainly of data submitted from each of Georgia's 140+ local jails, via the Georgia Crime Information Center (GCIC) to the Georgia Department of Community Affairs (DCA), which publishes its <u><a href="#">County Jail Inmate Population Report</a></u> on its web site each month. GDC has collected summary statewide data from this report every month since its inception in January, 1993. The table also contains the inmate jail backlog as computed by GDC for the last Friday of each month, for comparison with the jailers' count of state inmates. Although nominally a monthly table, DCA_RESRCH is updated weekly to insure that the DCA data is correctly synchronized with the GDC jail backlog data.	
Page	Contents
DCA-01	Jail composition. Monthly graph from 1993 to the present shows trends in the numbers of unsentenced inmates, state inmates, county inmates, and other inmates.
DCA-02	Two views of jail backlog. Monthly graph from 1993 to present compares jailers' count of "state inmates" with GDC's count of the "inmate jail backlog", and explains that both are valid counts of different phenomena.
DCA-03	48-month table: local jails. Data from Georgia jailers for each of the past 48 months, showing total jail population, capacity, utilization, and number and percent of unsentenced inmates, state inmates, county inmates, and other inmates.

## Releases by clemency and maxout, Jan-2000 to Apr-2025

There are two main ways of being released from a Georgia prison -- by actions of the Board of Pardons and Paroles ("Clemencies") and by service of 100% of the court-ordered sentences ("Maxouts"). "Clemency" includes paroles, reprieves, commutations, and transfer to other confinement prior to expiration of sentence.

"Other Releases" includes deaths, and sentences modified or overturned by the courts. Clemencies and maxouts may or may not be followed by periods of probation.



A. Clemency with probation to follow	falls by	26	from	433	to	407
B. Clemency only	RISES BY	10	from	54	to	64
C. Maxout with probation to follow	falls by	37	from	595	to	558
D. Maxout only (unsupervised)	falls by	6	from	51	to	45
E. Other releases	falls by	5	from	23	to	18
F. Total releases (A+B+C+D+E)	falls by	64	from	1156	to	1092
<b>G. Total clemencies (A+B) (top line)</b>	<b>falls by</b>	<b>16</b>	<b>from</b>	<b>487</b>	<b>to</b>	<b>471</b>
<b>H. Total maxouts(C+D) (bottom line)</b>	<b>falls by</b>	<b>43</b>	<b>from</b>	<b>646</b>	<b>to</b>	<b>603</b>
I. % of releases by clemency (G/F)	RISES BY	1%	from	42.13%	to	43.13%
J. % of releases by maxout (H/F)	falls by	.66%	from	55.88%	to	55.22%
K. Supervised releases (A+B+C)	falls by	53	from	1082	to	1029
L. % unsupervised releases (D/F)	falls by	.29%	from	4.41%	to	4.12%
M. % supervised releases (K/F)	RISES BY	.63%	from	93.6%	to	94.23%

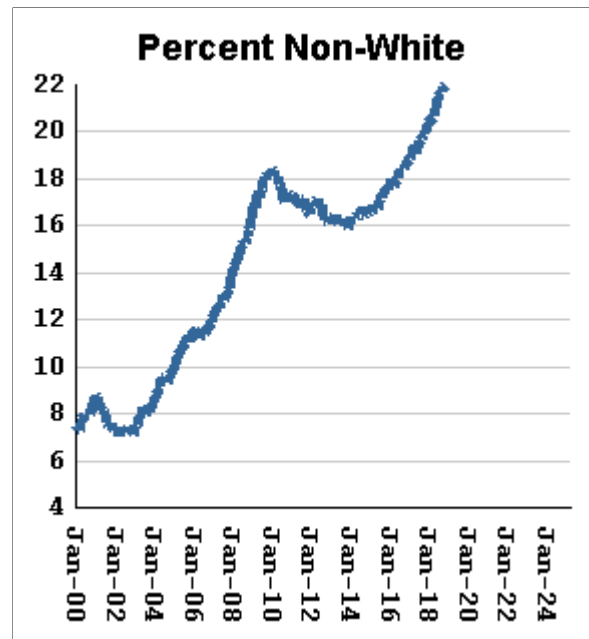
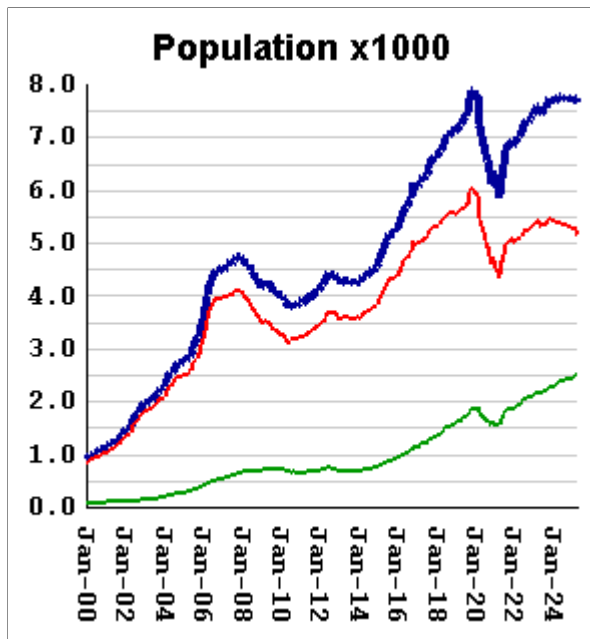
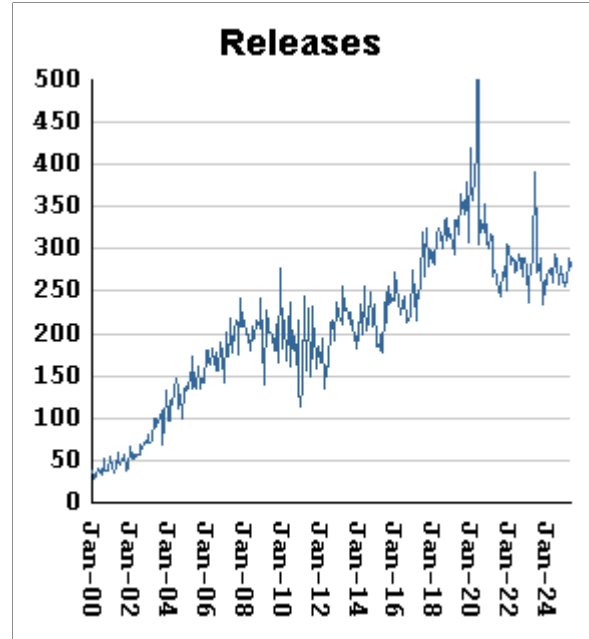
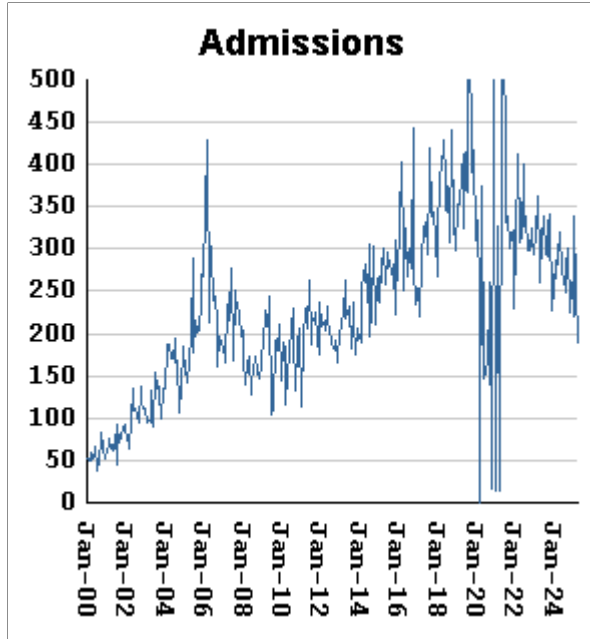
## Monthly releases from prison by type of release, for the past 48 months

Month	A	B	C	D	E	F	G	H	I	J
	Clemency + Prob	Clemency Only	Maxout + Prob	Maxout Only	Other Rels	Total Releases (A+B+C+D+E)	Total Clemency (A+B)	Total Maxout (C+D)	Percent Clemency (G/F)	Percent Maxout (H/F)
May-21	444	79	509	53	21	1106	523	562	47.29%	50.81%
Jun-21	367	85	467	68	21	1008	452	535	44.84%	53.08%
Jul-21	392	65	534	63	19	1073	457	597	42.59%	55.64%
Aug-21	410	71	529	66	28	1104	481	595	43.57%	53.89%
Sep-21	439	80	522	68	32	1141	519	590	45.49%	51.71%
Oct-21	446	79	525	57	21	1128	525	582	46.54%	51.60%
Nov-21	425	79	494	64	18	1080	504	558	46.67%	51.67%
Dec-21	469	82	483	56	18	1108	551	539	49.73%	48.65%
Jan-22	459	80	552	75	26	1192	539	627	45.22%	52.60%
Feb-22	443	81	465	71	24	1084	524	536	48.34%	49.45%
Mar-22	460	73	515	56	16	1120	533	571	47.59%	50.98%
Apr-22	455	73	471	70	16	1085	528	541	48.66%	49.86%
May-22	439	79	539	64	26	1147	518	603	45.16%	52.57%
Jun-22	457	64	527	58	21	1127	521	585	46.23%	51.91%
Jul-22	442	68	529	60	14	1113	510	589	45.82%	52.92%
Aug-22	426	66	619	65	21	1197	492	684	41.10%	57.14%
Sep-22	397	78	549	59	18	1101	475	608	43.14%	55.22%
Oct-22	374	61	606	60	23	1124	435	666	38.70%	59.25%
Nov-22	367	53	524	54	19	1017	420	578	41.30%	56.83%
Dec-22	342	60	550	59	28	1039	402	609	38.69%	58.61%
Jan-23	376	50	526	60	23	1035	426	586	41.16%	56.62%
Feb-23	388	46	494	52	17	997	434	546	43.53%	54.76%
Mar-23	377	55	573	63	24	1092	432	636	39.56%	58.24%
Apr-23	390	57	574	53	26	1100	447	627	40.64%	57.00%
May-23	327	47	932	129	20	1455	374	1061	25.70%	72.92%
Jun-23	464	69	567	59	19	1178	533	626	45.25%	53.14%
Jul-23	461	72	515	44	25	1117	533	559	47.72%	50.04%
Aug-23	402	52	592	52	22	1120	454	644	40.54%	57.50%
Sep-23	405	53	578	42	10	1088	458	620	42.10%	56.99%
Oct-23	363	51	577	52	31	1074	414	629	38.55%	58.57%
Nov-23	355	56	495	63	19	988	411	558	41.60%	56.48%
Dec-23	367	46	554	57	21	1045	413	611	39.52%	58.47%
Jan-24	368	61	598	63	32	1122	429	661	38.24%	58.91%
Feb-24	397	50	577	60	24	1108	447	637	40.34%	57.49%
Mar-24	380	63	589	64	20	1116	443	653	39.70%	58.51%
Apr-24	411	46	528	57	33	1075	457	585	42.51%	54.42%
May-24	427	55	609	73	26	1190	482	682	40.50%	57.31%
Jun-24	409	64	577	59	23	1132	473	636	41.78%	56.18%
Jul-24	400	60	632	66	38	1196	460	698	38.46%	58.36%
Aug-24	381	68	642	56	19	1166	449	698	38.51%	59.86%
Sep-24	381	63	561	64	34	1103	444	625	40.25%	56.66%
Oct-24	401	58	631	55	28	1173	459	686	39.13%	58.48%
Nov-24	389	53	592	54	23	1111	442	646	39.78%	58.15%
Dec-24	391	58	556	48	33	1086	449	604	41.34%	55.62%
Jan-25	418	59	560	49	30	1116	477	609	42.74%	54.57%
Feb-25	400	56	548	59	17	1080	456	607	42.22%	56.20%
Mar-25	433	54	595	51	23	1156	487	646	42.13%	55.88%
Apr-25	407	64	558	45	18	1092	471	603	43.13%	55.22%

## Inmates with meth crimes, by month, Jan-2000 to Apr-2025

Methamphetamine is one of the most addictive drugs ever known. At first it induces intense euphoria, but with continued use causes severe depression and physical deterioration, including the dental catastrophe known as "meth mouth".

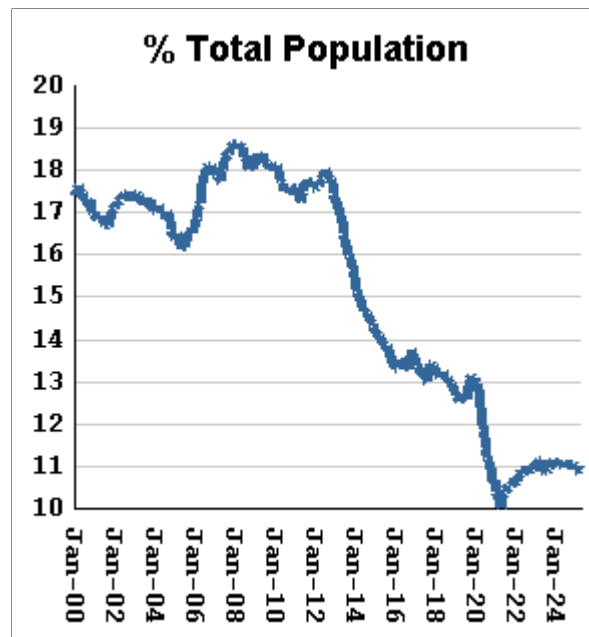
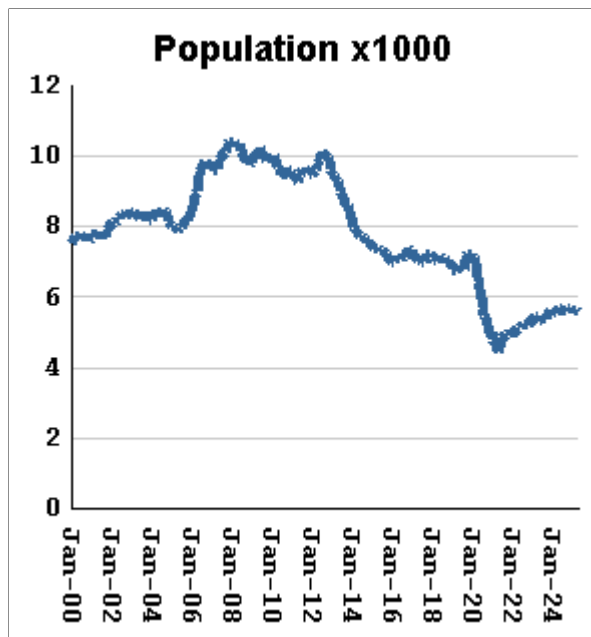
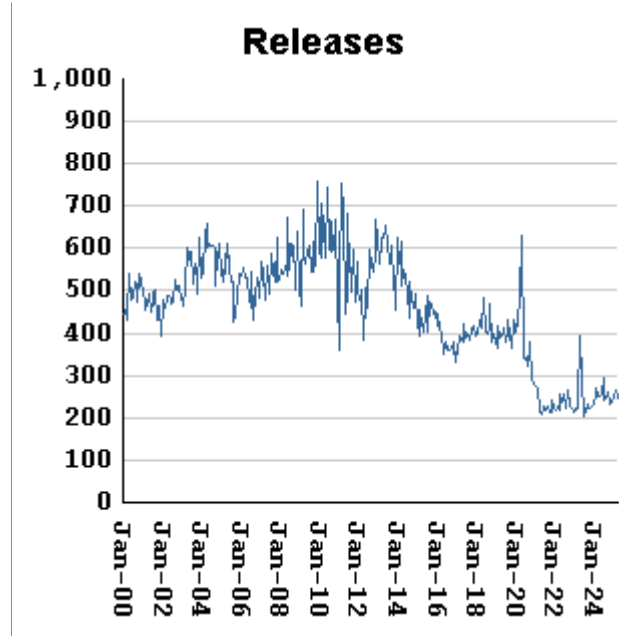
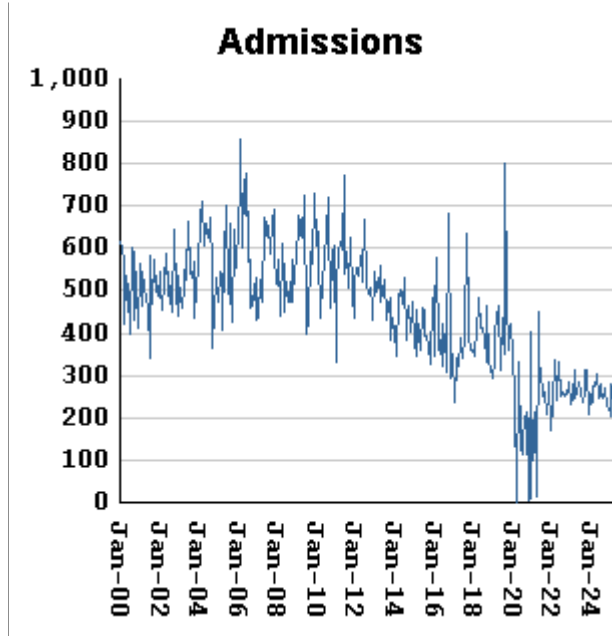
Georgia's meth epidemic peaked in 2007-2008, then declined, but is again growing. It started in the predominantly white northern counties, with blacks accounting for only about 5% of convictions. But black usage has expanded, and now accounts for about 15% of convictions.



Methamphetamine admissions	fall by	63	from	252	to	189
Methamphetamine releases	fall by	10	from	289	to	279
Methamphetamine population	falls by	90	from	7736	to	7646
Meth white population	falls by	85	from	5258	to	5173
Meth non-white population	RISES BY	20	from	2488	to	2508
Percent meth inmates who are non-white	RISES BY	.64 %	from	32.16%	to	32.8%

## Non-violent first-incarcerants, by month, Jan-2000 to Apr-2025

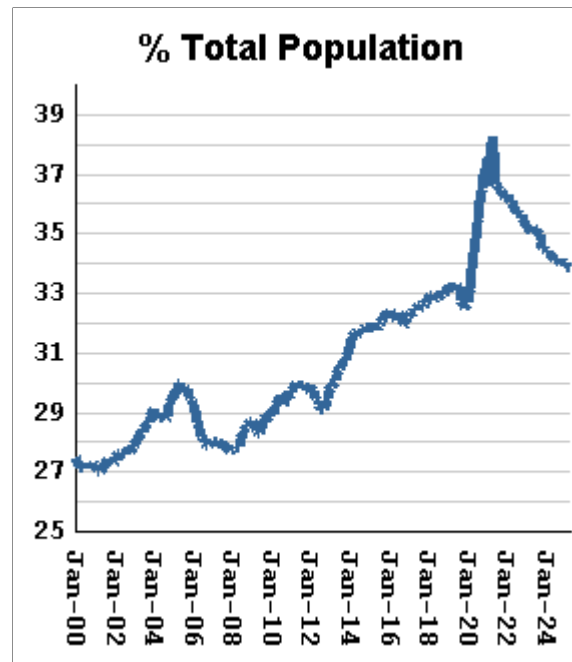
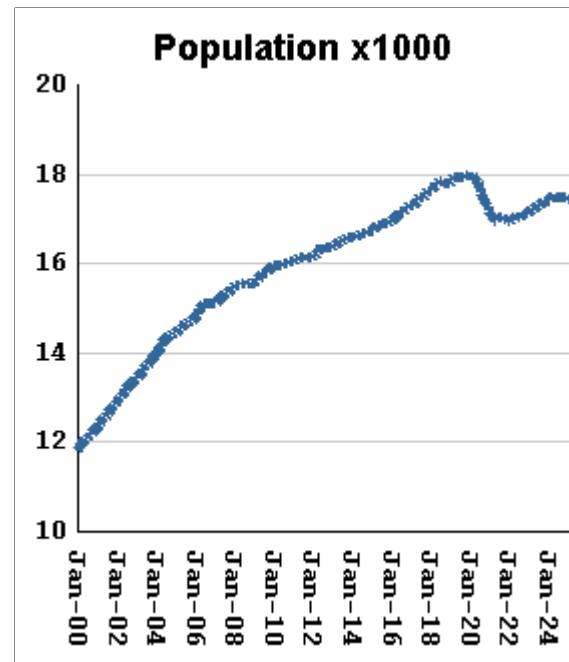
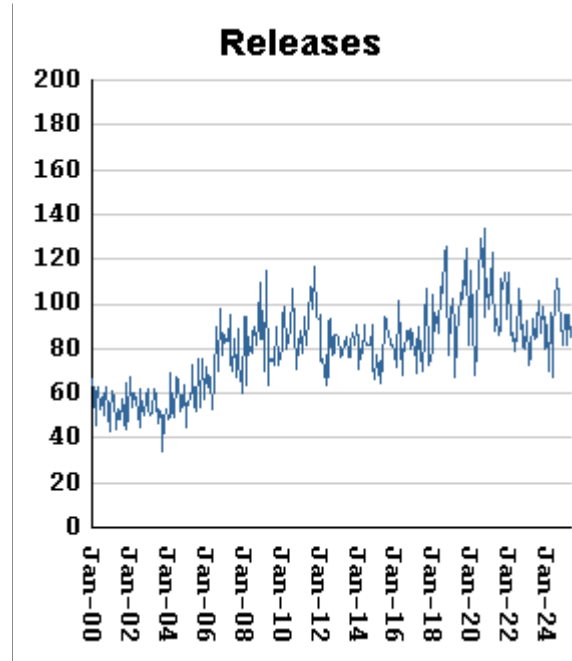
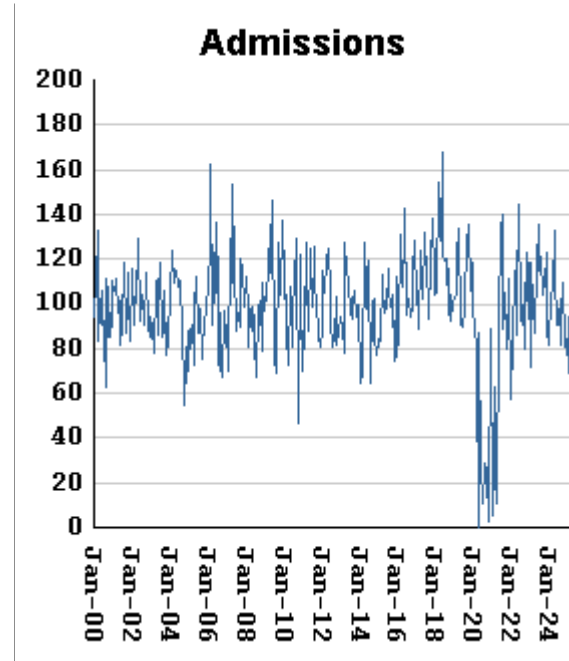
Historically, about one in six Georgia prison inmates has been a first-time incarcerant with a non-violent crime. In 2012 Georgia passed HB1176, which aimed to curb the growth of prison population by steering the least dangerous, least hardened offenders away from prison through pre-trial intervention, diversion, drug courts and treatment programs, and raising the dollar thresholds that define property felonies. The expectation is that over time, these measures will reduce the percentage of first-time non-violent incarcerants in prison.



Non-viol/1st-Incar admissions	fall by	62	from	274	to	212
Non-viol/1st-Incar releases	fall by	19	from	266	to	247
Non-viol/1st-Incar population	falls by	35	from	5633	to	5598
Non-viol/1st-Incar % of total population	falls by	.05 %	from	10.93%	to	10.88%

## "Seven Deadly Sins" by month, Jan-2000 to Apr-2025

Tough legislation in 1995 imposed mandatory ten-year minimum terms for kidnapping, armed robbery, rape, aggravated sodomy, aggravated sexual battery, and aggravated child molestation, and a minimum of 25 years for murder. A second conviction resulted in life without parole. As predicted, longer prison terms caused population to climb steeply for about a decade. It then began to level off, as releases started catching up with admissions. The 2008 dip in percentage of total population (bottom right) was caused by the surge of methamphetamine convictions (Page MO-03). Note: these graphs include inmates convicted before 1995.



"Seven Deadly Sin" admissions

RISE BY 3 from 84 to 87

"Seven Deadly Sin" releases

fall by 10 from 95 to 85

"Seven Deadly Sin" population

RISES BY 2 from 17452 to 17454

"Seven Deadly Sin" % of total population

RISES BY .06 % from 33.85% to 33.91%

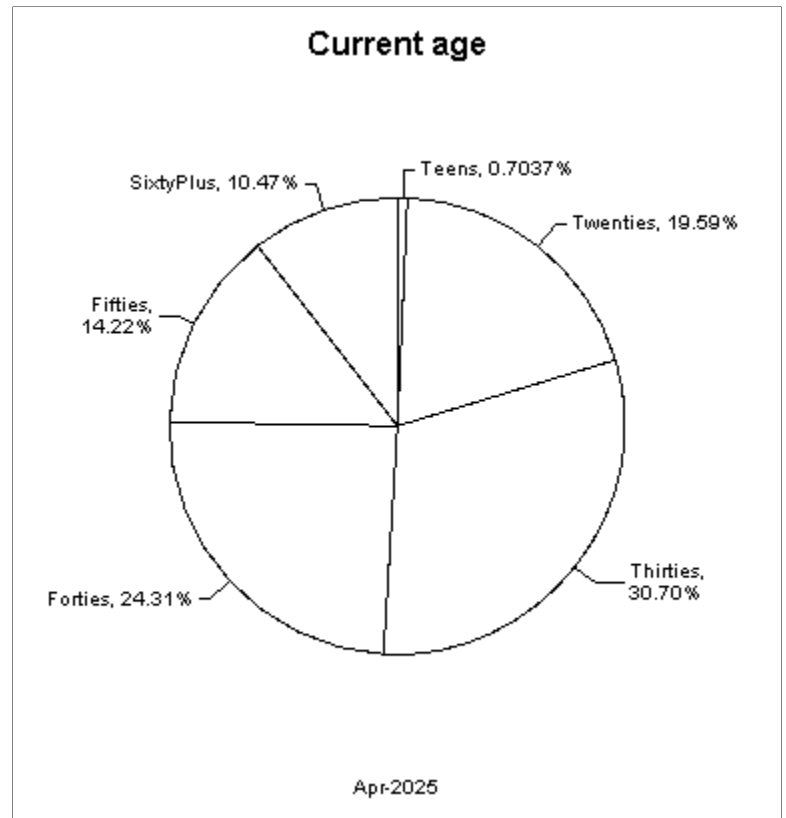
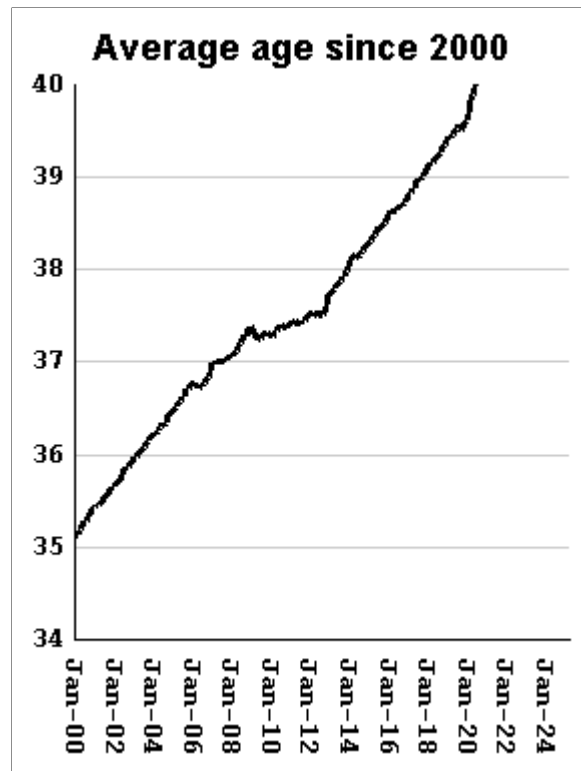
## Inmate subpopulation counts and percentages, for the past 48 months

Month	Methamphetamine						1st Incar Non-Violent		Seven Deadly Sins	
	Total Number	Total Percent	White Number	White Percent	Non White Number	Non White Percent	Number	Percent	Number	Percent
May-21	6194	13.72%	4608	74.39%	1656	26.74%	4655	10.31%	16954	37.54%
Jun-21	6459	14.07%	4757	73.65%	1742	26.97%	4773	10.39%	17002	37.03%
Jul-21	6680	14.36%	4896	73.29%	1791	26.81%	4858	10.45%	17053	36.67%
Aug-21	6756	14.48%	4951	73.28%	1821	26.95%	4892	10.49%	17031	36.51%
Sep-21	6826	14.59%	4992	73.13%	1841	26.97%	4927	10.53%	17029	36.41%
Oct-21	6849	14.63%	5009	73.13%	1847	26.97%	4924	10.52%	16995	36.31%
Nov-21	6916	14.74%	5063	73.21%	1869	27.02%	4978	10.61%	17001	36.24%
Dec-21	6933	14.74%	5069	73.11%	1871	26.99%	5020	10.67%	17018	36.17%
Jan-22	6859	14.69%	5023	73.23%	1872	27.29%	4965	10.63%	16961	36.33%
Feb-22	6887	14.74%	5047	73.28%	1898	27.56%	4983	10.66%	16959	36.29%
Mar-22	7010	14.88%	5081	72.48%	1936	27.62%	5089	10.80%	16987	36.06%
Apr-22	7032	14.90%	5095	72.45%	1944	27.65%	5131	10.87%	16994	36.02%
May-22	7074	14.97%	5121	72.39%	1977	27.95%	5113	10.82%	17015	36.02%
Jun-22	7196	15.09%	5194	72.18%	2011	27.95%	5206	10.92%	17076	35.82%
Jul-22	7228	15.12%	5204	72.00%	2031	28.10%	5200	10.88%	17062	35.70%
Aug-22	7283	15.23%	5259	72.21%	2054	28.20%	5235	10.95%	17057	35.67%
Sep-22	7314	15.27%	5241	71.66%	2079	28.42%	5220	10.90%	17085	35.66%
Oct-22	7322	15.28%	5269	71.96%	2084	28.46%	5248	10.95%	17074	35.63%
Nov-22	7358	15.26%	5316	72.25%	2085	28.34%	5276	10.95%	17117	35.51%
Dec-22	7391	15.23%	5311	71.86%	2086	28.22%	5335	11.00%	17139	35.33%
Jan-23	7446	15.31%	5343	71.76%	2123	28.51%	5353	11.01%	17138	35.24%
Feb-23	7508	15.38%	5376	71.60%	2152	28.66%	5380	11.02%	17183	35.19%
Mar-23	7590	15.44%	5427	71.50%	2169	28.58%	5467	11.12%	17204	35.00%
Apr-23	7583	15.43%	5432	71.63%	2157	28.45%	5470	11.13%	17198	34.99%
May-23	7454	15.23%	5338	71.61%	2146	28.79%	5337	10.90%	17233	35.21%
Jun-23	7459	15.16%	5312	71.22%	2153	28.86%	5327	10.83%	17282	35.12%
Jul-23	7525	15.24%	5374	71.42%	2192	29.13%	5379	10.90%	17305	35.06%
Aug-23	7543	15.26%	5342	70.82%	2206	29.25%	5396	10.91%	17325	35.04%
Sep-23	7545	15.21%	5340	70.78%	2209	29.28%	5429	10.94%	17342	34.95%
Oct-23	7642	15.30%	5409	70.78%	2246	29.39%	5519	11.05%	17353	34.74%
Nov-23	7721	15.32%	5454	70.64%	2271	29.41%	5611	11.13%	17385	34.49%
Dec-23	7703	15.27%	5441	70.63%	2266	29.42%	5592	11.09%	17392	34.48%
Jan-24	7690	15.24%	5430	70.61%	2287	29.74%	5609	11.11%	17383	34.44%
Feb-24	7701	15.23%	5412	70.28%	2292	29.76%	5594	11.07%	17418	34.45%
Mar-24	7688	15.16%	5379	69.97%	2312	30.07%	5600	11.04%	17429	34.37%
Apr-24	7725	15.15%	5387	69.73%	2352	30.45%	5622	11.02%	17495	34.30%
May-24	7779	15.20%	5397	69.38%	2385	30.66%	5675	11.09%	17519	34.22%
Jun-24	7759	15.14%	5381	69.35%	2381	30.69%	5659	11.04%	17509	34.17%
Jul-24	7741	15.10%	5356	69.19%	2410	31.13%	5646	11.01%	17496	34.13%
Aug-24	7731	15.08%	5328	68.92%	2405	31.11%	5656	11.03%	17476	34.08%
Sep-24	7751	15.13%	5333	68.80%	2419	31.21%	5656	11.04%	17472	34.11%
Oct-24	7771	15.12%	5353	68.88%	2418	31.12%	5666	11.02%	17489	34.02%
Nov-24	7736	15.06%	5322	68.80%	2414	31.20%	5661	11.02%	17488	34.05%
Dec-24	7742	15.06%	5314	68.64%	2428	31.36%	5650	10.99%	17477	34.00%
Jan-25	7693	15.00%	5273	68.54%	2420	31.46%	5600	10.92%	17451	34.04%
Feb-25	7773	15.09%	5299	68.17%	2474	31.83%	5625	10.92%	17463	33.90%
Mar-25	7736	15.00%	5258	67.97%	2488	32.16%	5633	10.93%	17452	33.85%
Apr-25	7646	14.86%	5173	67.66%	2508	32.80%	5598	10.88%	17454	33.91%



## Overview of inmate age statistics, Jan-2000 to Apr-2025

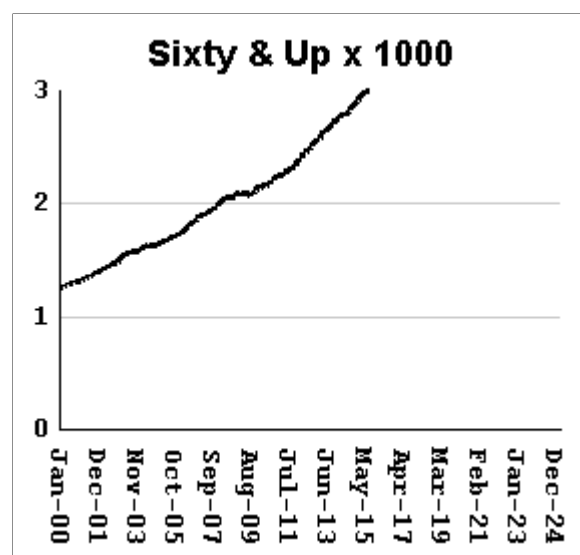
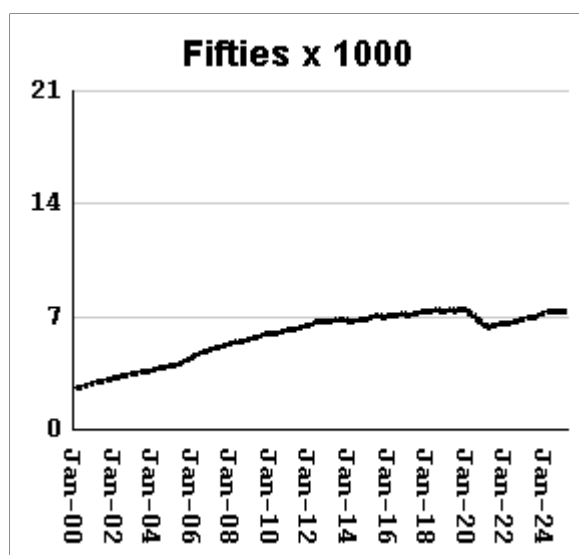
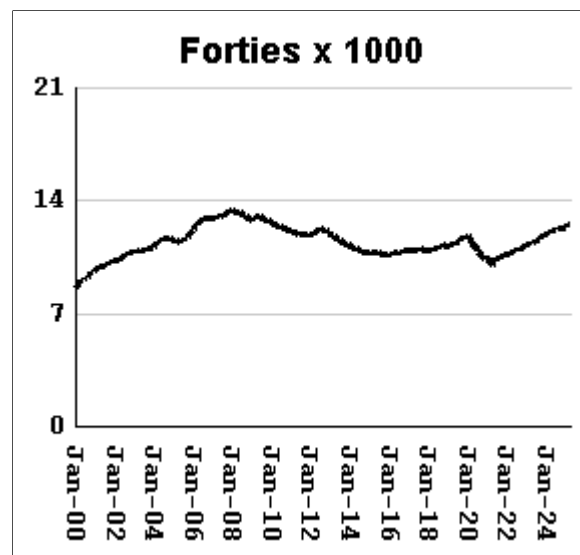
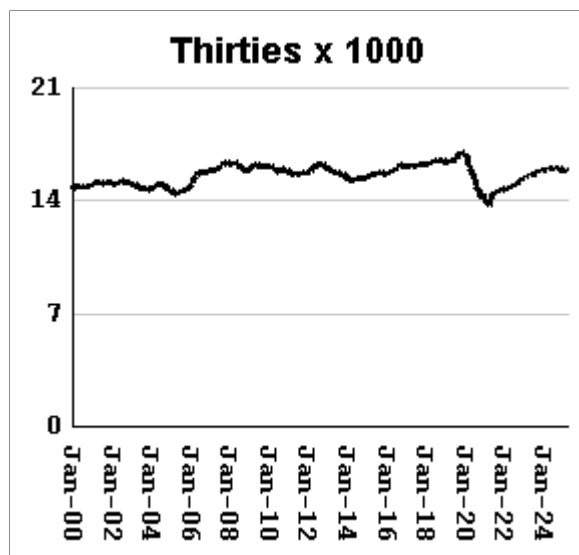
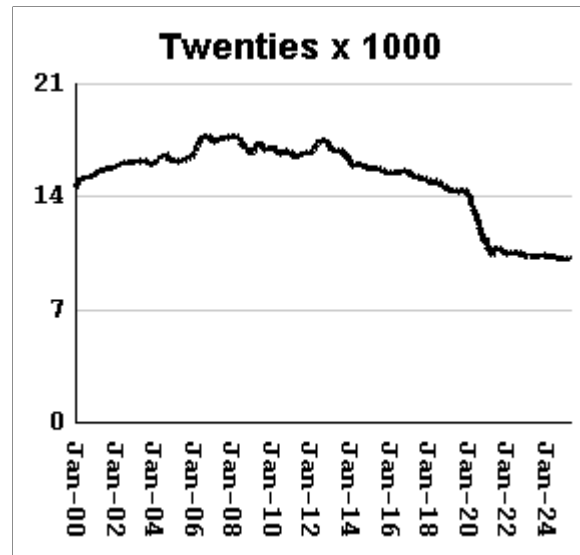
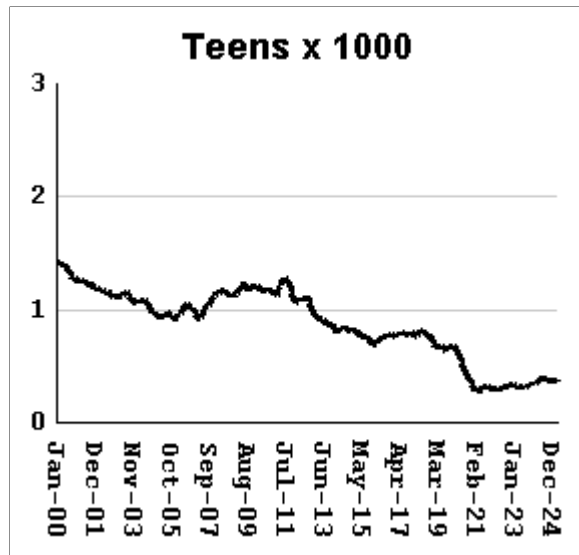
The "aging inmate population" is a concern in correctional systems throughout America, including Georgia. Here, the increase in inmate age is the result of several factors. Teenagers have been steered away from prison by increased usage of probation and other alternatives, at least for their first convictions. And there has been a surge of middle-aged male sex offenders due to the expanding "It's OK to tell" ethos. But most importantly, more severe sentence lengths and release policies have greatly increased the length of time that most offenders -- especially violent ones -- spend in prison, thereby increasing their average age.



Average age of active inmates	RISES BY	.05	from	41.84	to	41.89
Number in their teens	falls by	14	from	377	to	363
Percentage in their teens	falls by	.02%	from	.73%	to	0.71%
Number in their twenties	falls by	52	from	10,159	to	10,107
Percentage in their twenties	falls by	0.06%	from	19.70%	to	19.64%
Number in their thirties	falls by	60	from	15,895	to	15,835
Percentage in their thirties	falls by	0.06%	from	30.83%	to	30.77%
Number in their forties	RISES BY	27	from	12,514	to	12,541
Percentage in their forties	RISES BY	0.10%	from	24.27%	to	24.37%
Number in their fifties	falls by	23	from	7356	to	7,333
Percentage in their fifties	falls by	0.02%	from	14.27%	to	14.25%
Number age sixty and up	RISES BY	41	from	5361	to	5,402
Percentage age sixty and up	RISES BY	.1%	from	10.4%	to	10.50%

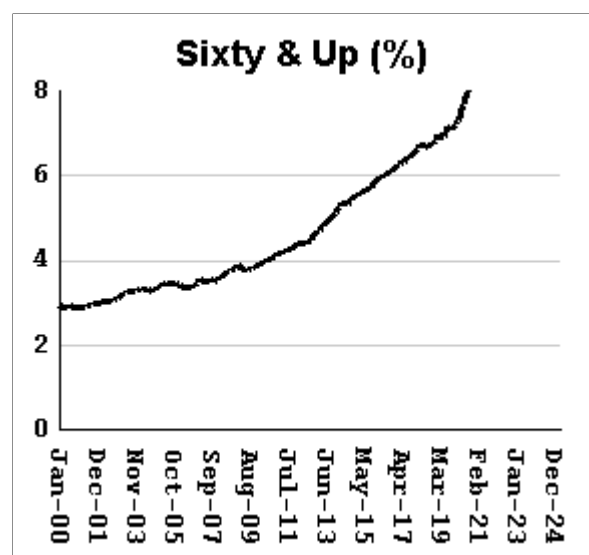
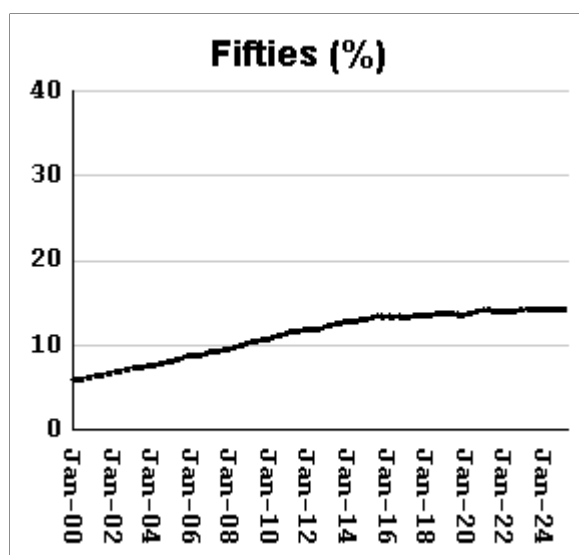
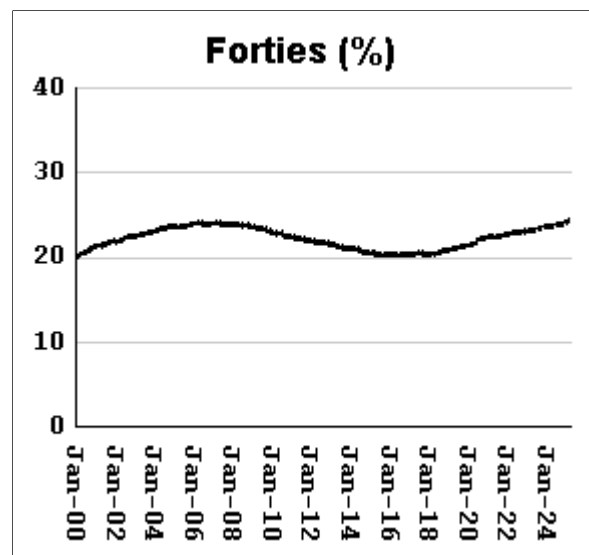
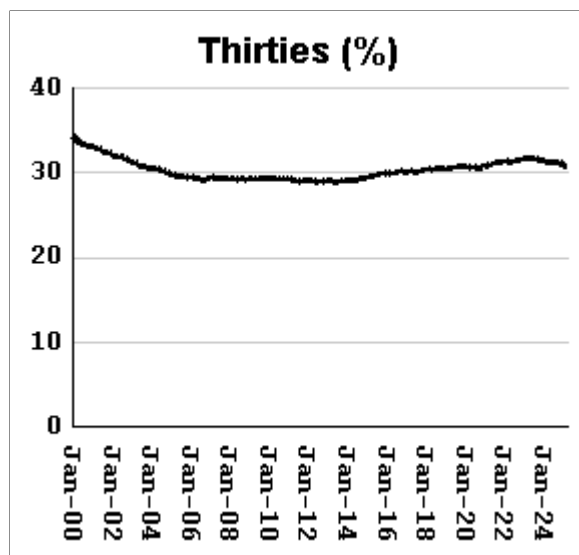
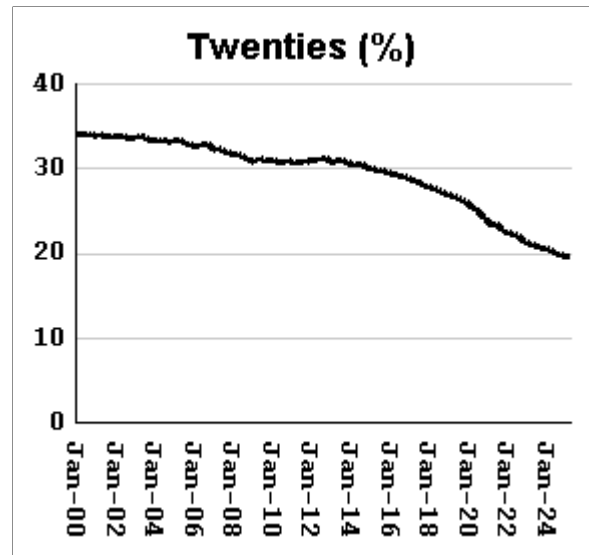
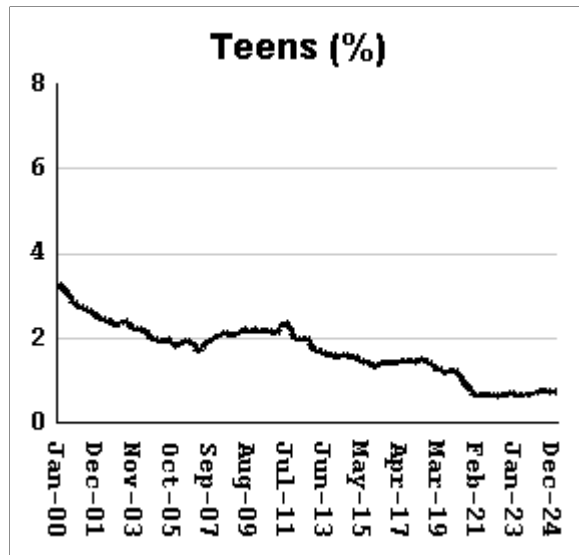
# Monthly counts of inmates by age group, Jan-2000 to Apr-2025

Y-axis of Twenties/Thirties/Forties/Fifties runs from 0 to 21,000. Y-axis of Teens/Sixty+ runs from 0 to 3,000.



# Monthly percentages of inmates by age group, Jan-2000 to Apr-2025

Y-axis of Twenties/Thirties/Forties/Fifties runs from 0% to 40%. Y-axis of Teens/Sixty+ runs from 0% to 8%

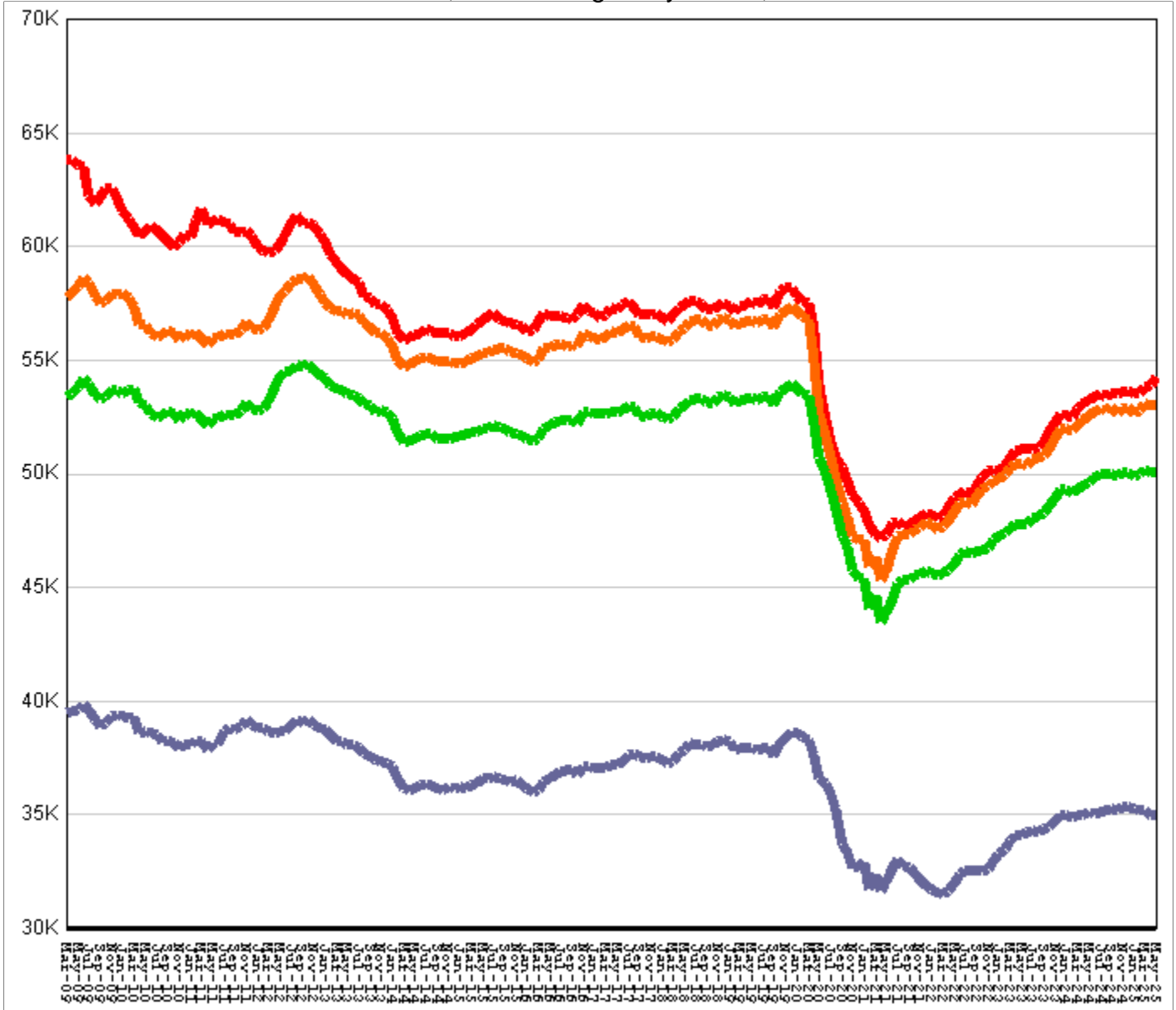


## Inmate counts & percentages by age, for past 48 months

Month	Avg Age	Teens		Twenties		Thirties		Forties		Fifties		Sixty & Up	
		Num-ber	Per-cent	Num-ber	Per-cent	Num-ber	Per-cent	Num-ber	Per-cent	Num-ber	Per-cent	Num-ber	Per-cent
May-21	40.66	289	0.64%	10581	23.43%	14021	31.05%	10170	22.52%	6370	14.11%	3949	8.74%
Jun-21	40.63	307	0.67%	10777	23.47%	14246	31.03%	10277	22.38%	6447	14.04%	4006	8.72%
Jul-21	40.62	317	0.68%	10850	23.33%	14428	31.03%	10383	22.33%	6491	13.96%	4049	8.71%
Aug-21	40.64	318	0.68%	10795	23.14%	14526	31.14%	10471	22.44%	6511	13.96%	4072	8.73%
Sep-21	40.68	317	0.68%	10737	22.95%	14595	31.20%	10494	22.43%	6520	13.94%	4127	8.82%
Oct-21	40.72	299	0.64%	10637	22.73%	14644	31.29%	10574	22.59%	6524	13.94%	4137	8.84%
Nov-21	40.73	299	0.64%	10625	22.65%	14702	31.34%	10651	22.70%	6532	13.92%	4153	8.85%
Dec-21	40.76	302	0.64%	10596	22.52%	14731	31.31%	10688	22.72%	6564	13.95%	4181	8.89%
Jan-22	40.82	293	0.63%	10473	22.43%	14638	31.35%	10641	22.79%	6568	14.07%	4189	8.97%
Feb-22	40.83	298	0.64%	10475	22.42%	14674	31.40%	10666	22.83%	6565	14.05%	4209	9.01%
Mar-22	40.83	295	0.63%	10522	22.33%	14765	31.34%	10729	22.77%	6575	13.96%	4238	9.00%
Apr-22	40.86	285	0.60%	10514	22.28%	14758	31.28%	10786	22.86%	6597	13.98%	4254	9.02%
May-22	40.9	282	0.60%	10499	22.22%	14809	31.35%	10819	22.90%	6598	13.97%	4290	9.08%
Jun-22	40.88	307	0.64%	10585	22.20%	14924	31.30%	10929	22.92%	6629	13.90%	4317	9.05%
Jul-22	40.93	316	0.66%	10540	22.05%	14967	31.31%	10971	22.95%	6671	13.96%	4344	9.09%
Aug-22	40.96	319	0.67%	10508	21.97%	15017	31.40%	11012	23.03%	6708	14.03%	4384	9.17%
Sep-22	41	316	0.66%	10426	21.76%	15040	31.39%	10983	22.93%	6736	14.06%	4416	9.22%
Oct-22	41.03	322	0.67%	10368	21.64%	15126	31.57%	11037	23.03%	6751	14.09%	4434	9.25%
Nov-22	41.04	334	0.69%	10391	21.56%	15228	31.59%	11139	23.11%	6798	14.10%	4479	9.29%
Dec-22	41.07	341	0.70%	10352	21.34%	15311	31.56%	11161	23.00%	6850	14.12%	4512	9.30%
Jan-23	41.1	329	0.68%	10329	21.24%	15391	31.65%	11199	23.03%	6870	14.13%	4555	9.37%
Feb-23	41.13	318	0.65%	10331	21.16%	15459	31.66%	11290	23.12%	6874	14.08%	4606	9.43%
Mar-23	41.12	318	0.65%	10384	21.13%	15548	31.63%	11378	23.15%	6923	14.09%	4607	9.37%
Apr-23	41.16	308	0.63%	10376	21.11%	15549	31.64%	11386	23.17%	6926	14.09%	4615	9.39%
May-23	41.18	314	0.64%	10331	21.11%	15550	31.77%	11361	23.21%	6918	14.13%	4630	9.46%
Jun-23	41.21	315	0.64%	10304	20.94%	15615	31.73%	11392	23.15%	6937	14.10%	4652	9.45%
Jul-23	41.24	322	0.65%	10314	20.89%	15687	31.78%	11503	23.30%	6976	14.13%	4687	9.49%
Aug-23	41.3	308	0.62%	10269	20.77%	15627	31.60%	11538	23.34%	6977	14.11%	4733	9.57%
Sep-23	41.32	318	0.64%	10284	20.73%	15645	31.53%	11602	23.38%	7003	14.11%	4769	9.61%
Oct-23	41.34	335	0.67%	10296	20.62%	15757	31.55%	11729	23.48%	7053	14.12%	4816	9.64%
Nov-23	41.35	336	0.67%	10389	20.61%	15859	31.46%	11858	23.52%	7120	14.12%	4852	9.63%
Dec-23	41.39	345	0.68%	10353	20.53%	15837	31.40%	11904	23.60%	7151	14.18%	4855	9.63%
Jan-24	41.41	350	0.69%	10336	20.48%	15913	31.53%	11917	23.61%	7182	14.23%	4876	9.66%
Feb-24	41.45	344	0.68%	10286	20.35%	15885	31.42%	11947	23.63%	7194	14.23%	4901	9.69%
Mar-24	41.47	351	0.69%	10298	20.31%	15905	31.36%	11995	23.65%	7231	14.26%	4939	9.74%
Apr-24	41.5	369	0.72%	10336	20.27%	15963	31.30%	12113	23.75%	7273	14.26%	4985	9.77%
May-24	41.52	382	0.75%	10332	20.18%	16002	31.26%	12136	23.71%	7305	14.27%	5036	9.84%
Jun-24	41.55	395	0.77%	10319	20.14%	16016	31.26%	12144	23.70%	7281	14.21%	5091	9.94%
Jul-24	41.59	394	0.77%	10304	20.10%	16042	31.29%	12223	23.84%	7291	14.22%	5139	10.02%
Aug-24	41.62	382	0.74%	10235	19.96%	16022	31.24%	12228	23.85%	7271	14.18%	5144	10.03%
Sep-24	41.66	382	0.75%	10189	19.89%	15957	31.15%	12252	23.92%	7281	14.21%	5167	10.09%
Oct-24	41.68	380	0.74%	10218	19.88%	16002	31.13%	12257	23.84%	7318	14.23%	5234	10.18%
Nov-24	41.73	375	0.73%	10151	19.76%	15991	31.13%	12290	23.93%	7284	14.18%	5270	10.26%
Dec-24	41.76	376	0.73%	10142	19.73%	15947	31.02%	12334	23.99%	7322	14.24%	5286	10.28%
Jan-25	41.81	381	0.74%	10089	19.68%	15814	30.84%	12348	24.08%	7332	14.30%	5306	10.35%
Feb-25	41.82	365	0.71%	10158	19.72%	15867	30.80%	12429	24.13%	7353	14.28%	5336	10.36%
Mar-25	41.84	377	0.73%	10159	19.70%	15895	30.83%	12514	24.27%	7356	14.27%	5361	10.40%
Apr-25	41.89	363	0.71%	10107	19.64%	15835	30.77%	12541	24.37%	7333	14.25%	5402	10.50%

## All housed offenders under GDC jurisdiction

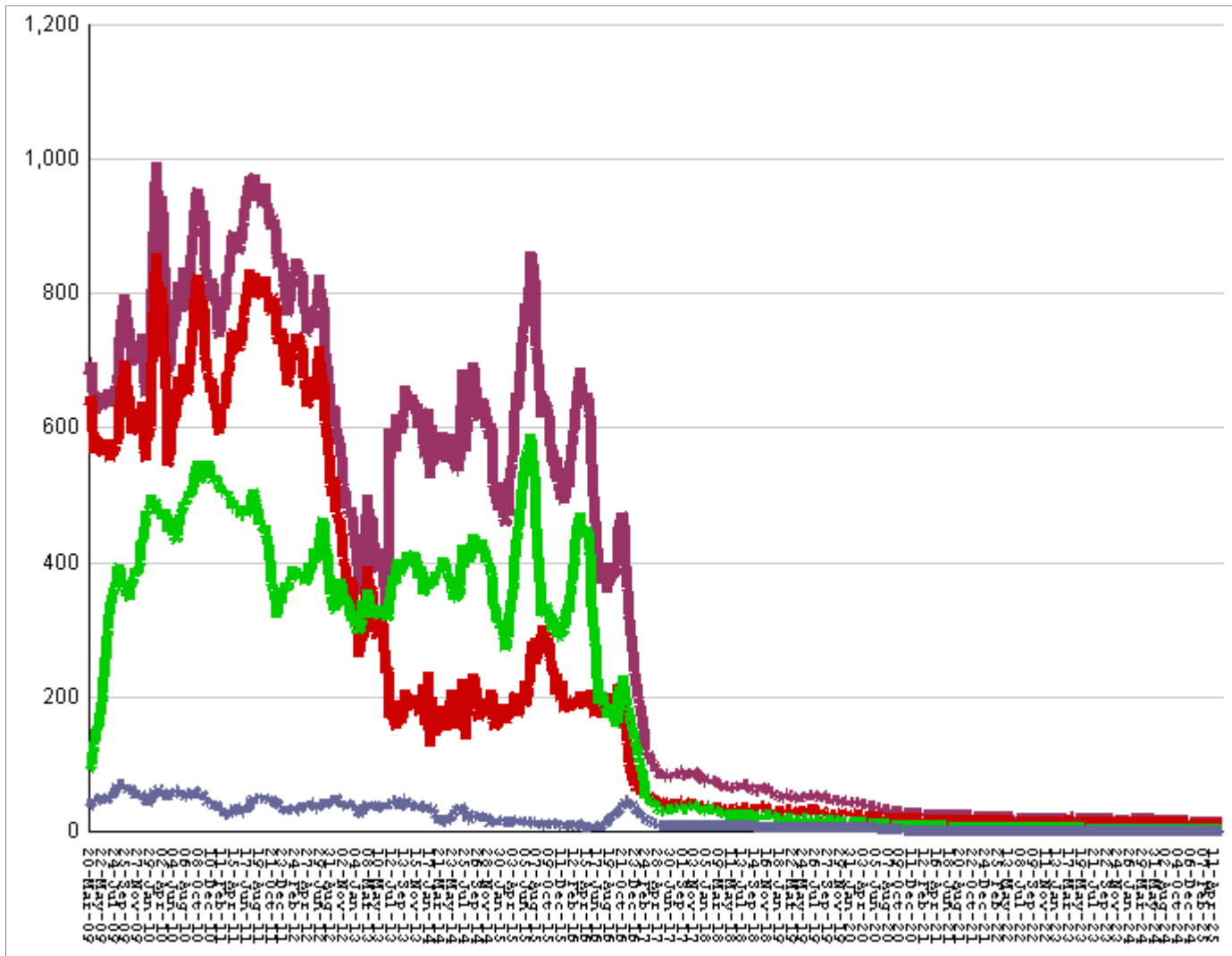
March 20, 2009 through May 23, 2025



<b>All in bed + probs in jail + backlog</b>	<b>RISE BY</b>	<b>183</b>	<b>from</b>	<b>54,320</b>	<b>to</b>	<b>54,503</b>
Probationers in jail	....	....	...	14	at	14
Inmate jail backlog	RISES BY	98	from	1355	to	1,453
<b>All in beds: inmate + Prob + parole</b>	<b>RISE BY</b>	<b>85</b>	<b>from</b>	<b>52,951</b>	<b>to</b>	<b>53,036</b>
Total probationers in beds	RISE BY	21	from	2,908	to	2,929
Probation detention centers	RISE BY	28	from	1,473	to	1,501
Probation boot camps	fall by		from		to	
Probation RSAT	fall by	7	from	1435	to	1,428
Parole revocation centers	fall by		from		to	
<b>All in inmate beds: state + other</b>	<b>RISE BY</b>	<b>64</b>	<b>from</b>	<b>50,043</b>	<b>to</b>	<b>50,107</b>
Other inmate facilities :	RISE BY	17	from	15,089	to	15,106
Inmate boot camps	fall by	1	from	1	to	0
Private prisons	fall by	4	from	8032	to	8,028
County prisons	fall by	1	from	4502	to	4,501
Transitional centers	RISE BY	23	from	2554	to	2,577
<b>In state prisons only</b>	<b>RISE BY</b>	<b>47</b>	<b>from</b>	<b>34,954</b>	<b>to</b>	<b>35,001</b>

## Probationers in jail awaiting placement in facilities

March 20, 2009 through May 23, 2025



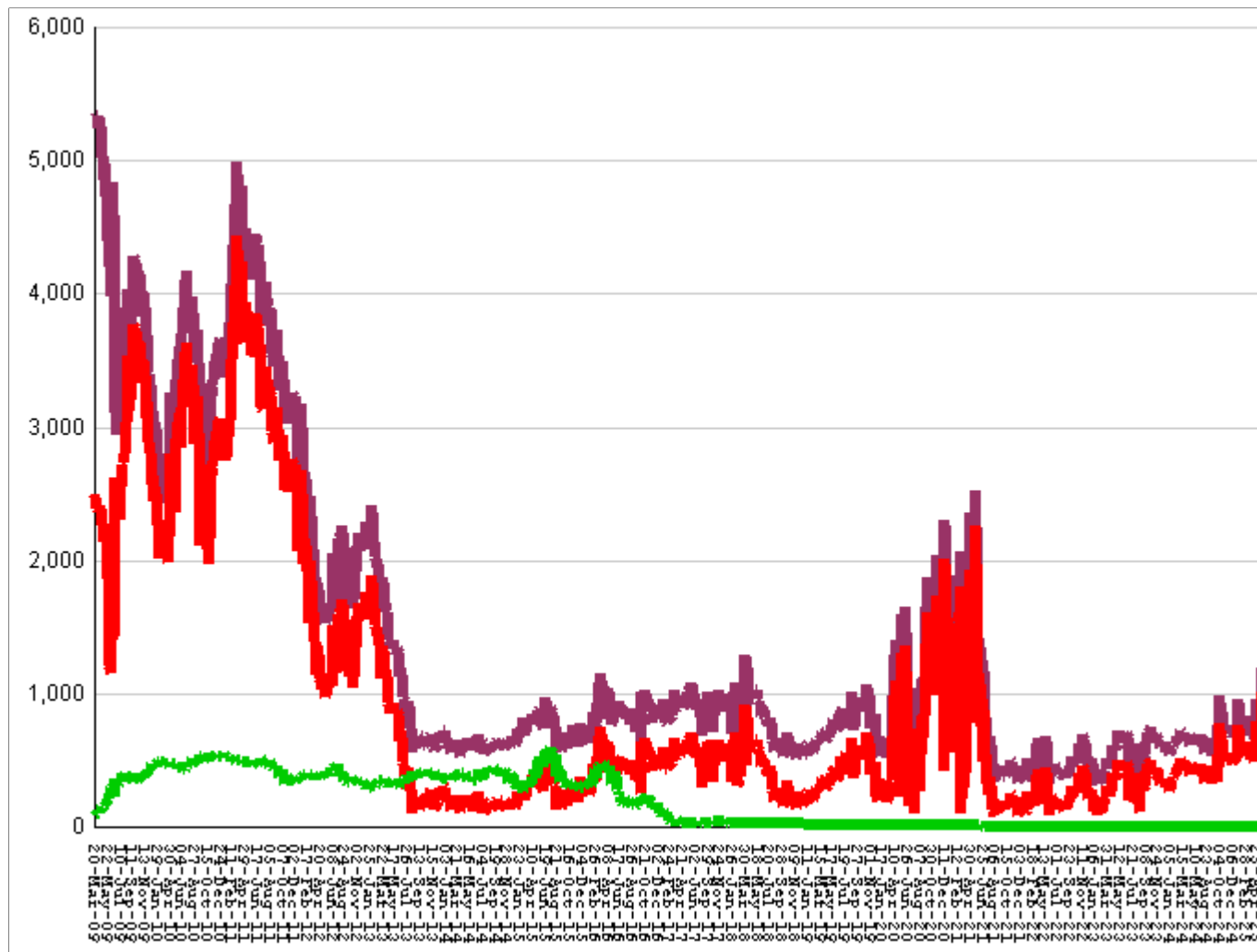
This graph shows, for each Friday since March 20 2009, the number of sentenced felony probationers who were waiting in jail for placement in facilities that GDC operates for housing probationers -- detention centers, probation residential substance abuse treatment (RSAT) centers, and probation boot camps. Counts include both those offenders sentenced directly from court, and those whose street probation was revoked.

Total probationers waiting in jail	...	...	...	level	at	14
... waiting for detention centers	...	...	...	level	at	11
... waiting for probation RSAT	...	...	...	level	at	2
... waiting for probation boot camps	...	...	...	level	at	1

The highest number of probationers waiting in jail was	994	on	05-MAR-10
... highest number waiting for detention centers was	859	on	05-MAR-10
... highest number waiting for probation RSAT was	592	on	10-JUL-15
... highest number waiting for probation boot camps was	70	on	18-SEP-09

# State inmates in jail awaiting placement in facilities

March 20, 2009 through May 23, 2025



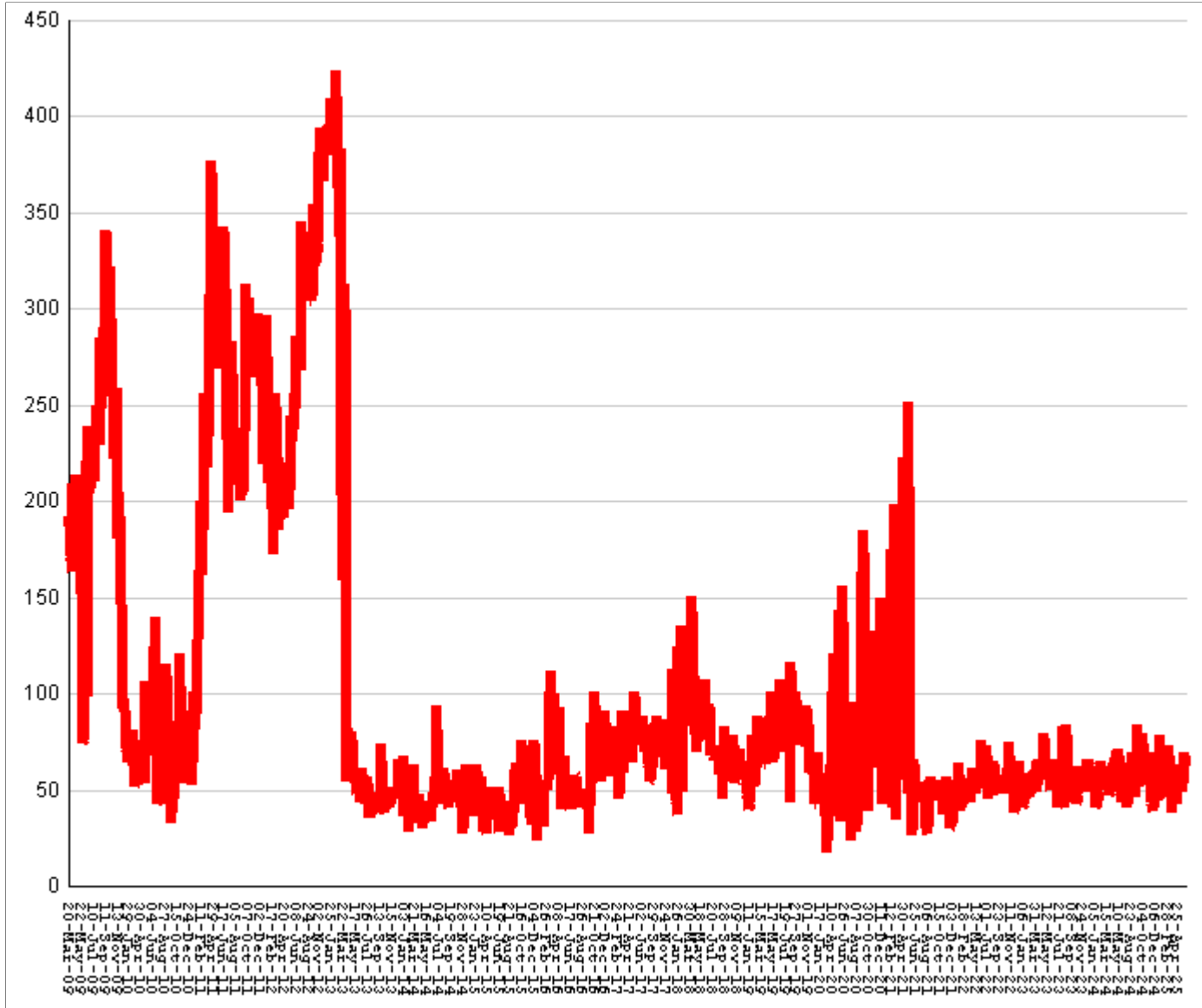
This graph shows, for each Friday since March 2009, the number of prisoners, probationers, and parolees in local jails who have been sentenced or revoked to state prison and whose documents have been received and verified by GDC. Most are almost immediately assigned to a diagnostic center, and are designated as in "admission processing". Of those a few hundred may be in the "transportation delayed" category because there is no room in the assigned diagnostic center, or because the inmate is being held for medical reasons, or for other court proceedings, or other reasons. Those remaining are "ready to be picked up".

<b>Total state inmates waiting in jail</b>	<b>RISE BY</b>	<b>98</b>	<b>from</b>	<b>1355</b>	<b>to</b>	<b>1453</b>
<b>... not yet assigned to a diagnostic center</b>	<b>...</b>	<b>...</b>	<b>...</b>	<b>level</b>	<b>at</b>	<b>8</b>
<b>... total "in admission processing"</b>	<b>RISE BY</b>	<b>98</b>	<b>from</b>	<b>1347</b>	<b>to</b>	<b>1445</b>
<b>... with "transportation delayed"</b>	<b>RISE BY</b>	<b>3</b>	<b>from</b>	<b>178</b>	<b>to</b>	<b>181</b>
<b>... ready to be picked up</b>	<b>RISE BY</b>	<b>95</b>	<b>from</b>	<b>1169</b>	<b>to</b>	<b>1264</b>

<b>The highest number of state inmates waiting in jail was</b>	<b>5338</b>	<b>on</b>	<b>27-MAR-09</b>
<b>... highest number not asg to a diagnostic center was</b>	<b>2881</b>	<b>on</b>	<b>12-JUN-09</b>
<b>... highest number in admission processing was</b>	<b>4916</b>	<b>on</b>	<b>25-MAR-11</b>
<b>... highest number with transportation delayed was</b>	<b>645</b>	<b>on</b>	<b>14-JAN-11</b>
<b>... highest number ready to be pickup was</b>	<b>4435</b>	<b>on</b>	<b>25-MAR-11</b>

# Female state inmates in jail awaiting pickup

March 20, 2009 through May 23, 2025



This graph shows, for each Friday since March 2009, the number of female state prisoners in local jails who were assigned to diagnostic centers but had not yet been picked up.

Female state inmates in jails waiting picked up	RISE BY	7	from	62	to	69
The highest number of female inmates waiting in jail was		424	on	01-FEB-13		
The lowest number of female inmates waiting in jail was		17	on	20-MAR-20		



# Summary of housed prisoners, parolees, and probationers

Week ending	Prison	Parole	Probation			Prison+parole+probation	Jail		Total
	Total inmates	Revocation centers	Prob RSAT	Boot camp	Detention		Inmate backlog	Probationers	Prison+parole+probation+jail
31-May-2024	49785		1467		1444	52696	612	18	53326
07-Jun-2024	49769		1491		1410	52670	608	17	53295
14-Jun-2024	49784		1492		1419	52695	631	17	53343
21-Jun-2024	49907		1472		1410	52789	643	17	53449
28-Jun-2024	49944		1476		1369	52789	687	17	53493
05-Jul-2024	49897		1493		1369	52759	690	16	53465
12-Jul-2024	50027		1472		1392	52891	549	17	53457
19-Jul-2024	50007		1496		1418	52921	588	17	53526
26-Jul-2024	49939		1433		1447	52819	631	17	53467
02-Aug-2024	49931		1424		1438	52793	598	17	53408
09-Aug-2024	49870		1418		1417	52705	526	17	53248
16-Aug-2024	49881		1429		1400	52710	609	17	53336
23-Aug-2024	49950		1453		1388	52791	598	17	53406
30-Aug-2024	50050		1466		1417	52933	598	17	53548
06-Sep-2024	49948		1452		1456	52856	549	17	53422
13-Sep-2024	49996		1457		1449	52902	535	17	53454
20-Sep-2024	50025		1467		1428	52920	660	17	53597
27-Sep-2024	49948		1515		1424	52887	755	17	53659
04-Oct-2024	49700		1465		1324	52489	989	17	53495
11-Oct-2024	49904		1490		1297	52691	857	16	53564
18-Oct-2024	49937		1494		1257	52688	769	16	53473
25-Oct-2024	49914		1461		1245	52620	766	16	53402
01-Nov-2024	49982		1487		1290	52759	760	16	53535
08-Nov-2024	49986		1504		1307	52797	724	15	53536
15-Nov-2024	50025		1480		1374	52879	710	15	53604
22-Nov-2024	50076		1484		1384	52944	710	15	53669
29-Nov-2024	50000		1511		1405	52916	751	15	53682
06-Dec-2024	50030		1493		1392	52915	688	14	53617
13-Dec-2024	50065		1466		1387	52918	711	14	53643
20-Dec-2024	50089		1505		1370	52964	692	14	53670
27-Dec-2024	50093		1487		1357	52937	702	14	53653
03-Jan-2025	50009		1474		1349	52832	794	14	53640
10-Jan-2025	49957		1478		1312	52747	778	14	53539
17-Jan-2025	50011		1456		1309	52776	752	14	53542
24-Jan-2025	49767		1407		1212	52386	957	14	53357
31-Jan-2025	49828		1453		1244	52525	862	14	53401
07-Feb-2025	49842		1474		1280	52596	828	14	53438
14-Feb-2025	49917		1494		1305	52716	746	14	53476
21-Feb-2025	49977		1475		1354	52806	778	14	53598
28-Feb-2025	50043		1464		1396	52903	718	14	53635
07-Mar-2025	50081		1449		1390	52920	679	14	53613
14-Mar-2025	50181		1476		1428	53085	664	14	53763
21-Mar-2025	50155		1474		1456	53085	703	14	53802
28-Mar-2025	50212		1477		1471	53160	775	14	53949
04-Apr-2025	50155		1483		1488	53126	772	14	53912
11-Apr-2025	50044		1473		1496	53013	804	14	53831
18-Apr-2025	50040		1449		1489	52978	895	14	53887
25-Apr-2025	50035		1454		1486	52975	962	14	53951
02-May-2025	50070		1461		1501	53032	1094	14	54140
09-May-2025	49969		1446		1504	52919	1192	14	54125
16-May-2025	50043		1435		1473	52951	1355	14	54320
23-May-2025	50107		1428		1501	53036	1453	14	54503

# Offenders housed in facilities for state prisoners

Week ending	In state prisons	In facilities other than state prisons						Total Inmates
		Transition centers	County prisons	Pre-rel centers	Private prisons	Inmate boot camps	Total others	
31-May-2024	35123	2674	4440		7548	0	14662	49785
07-Jun-2024	35023	2682	4494		7570	0	14746	49769
14-Jun-2024	34995	2718	4500		7571	0	14789	49784
21-Jun-2024	35048	2737	4524		7598	0	14859	49907
28-Jun-2024	35076	2740	4540		7588	0	14868	49944
05-Jul-2024	35064	2729	4531		7573	0	14833	49897
12-Jul-2024	35172	2754	4521		7580	0	14855	50027
19-Jul-2024	35164	2754	4505		7584	0	14843	50007
26-Jul-2024	35139	2751	4478		7571	0	14800	49939
02-Aug-2024	35134	2752	4502		7543	0	14797	49931
09-Aug-2024	35109	2749	4482		7529	1	14761	49870
16-Aug-2024	35109	2747	4489		7535	1	14772	49881
23-Aug-2024	35149	2756	4507		7537	1	14801	49950
30-Aug-2024	35243	2761	4517		7528	1	14807	50050
06-Sep-2024	35195	2716	4508		7528	1	14753	49948
13-Sep-2024	35217	2752	4493		7533	1	14779	49996
20-Sep-2024	35238	2746	4506		7534	1	14787	50025
27-Sep-2024	35230	2724	4475		7518	1	14718	49948
04-Oct-2024	35111	2663	4437		7488	1	14589	49700
11-Oct-2024	35197	2679	4493		7534	1	14707	49904
18-Oct-2024	35211	2739	4469		7517	1	14726	49937
25-Oct-2024	35182	2745	4466		7520	1	14732	49914
01-Nov-2024	35239	2765	4442		7535	1	14743	49982
08-Nov-2024	35246	2756	4434		7549	1	14740	49986
15-Nov-2024	35323	2747	4403		7551	1	14702	50025
22-Nov-2024	35354	2755	4428		7538	1	14722	50076
29-Nov-2024	35292	2750	4431		7526	1	14708	50000
06-Dec-2024	35285	2756	4451		7537	1	14745	50030
13-Dec-2024	35339	2763	4429		7533	1	14726	50065
20-Dec-2024	35382	2755	4417		7534	1	14707	50089
27-Dec-2024	35380	2734	4433		7545	1	14713	50093
03-Jan-2025	35335	2721	4419		7533	1	14674	50009
10-Jan-2025	35311	2691	4428		7526	1	14646	49957
17-Jan-2025	35313	2677	4467		7553	1	14698	50011
24-Jan-2025	35190	2631	4416		7529	1	14577	49767
31-Jan-2025	35220	2660	4419		7528	1	14608	49828
07-Feb-2025	35212	2646	4438		7545	1	14630	49842
14-Feb-2025	35219	2641	4451		7605	1	14698	49917
21-Feb-2025	35197	2629	4488		7662	1	14780	49977
28-Feb-2025	35183	2622	4500		7737	1	14860	50043
07-Mar-2025	35161	2624	4515		7780	1	14920	50081
14-Mar-2025	35187	2617	4528		7848	1	14994	50181
21-Mar-2025	35144	2608	4487		7915	1	15011	50155
28-Mar-2025	35103	2612	4520		7976	1	15109	50212
04-Apr-2025	35047	2599	4524		7984	1	15108	50155
11-Apr-2025	34951	2596	4501		7995	1	15093	50044
18-Apr-2025	34906	2591	4515		8027	1	15134	50040
25-Apr-2025	34904	2590	4522		8018	1	15131	50035
02-May-2025	34954	2567	4511		8037	1	15116	50070
09-May-2025	34900	2544	4495		8029	1	15069	49969
16-May-2025	34954	2554	4502		8032	1	15089	50043
23-May-2025	35001	2577	4501		8028	0	15106	50107

# Offenders waiting in local jails for state facilities

Week ending	Probationers waiting in jail				State prisoners wating in jail					Assigned females
	.. for PDCs	.. for RSAT	.. for boot camps	Total	Total backlog	Not yet assigned	In adm process	Delayed transport	Ready for pickup	
31-May-2024	14	3	1	18	612	25	587	195	392	63
07-Jun-2024	13	3	1	17	608	25	583	193	390	57
14-Jun-2024	13	3	1	17	631	24	607	188	419	43
21-Jun-2024	13	3	1	17	643	24	619	187	432	58
28-Jun-2024	13	3	1	17	687	26	661	189	472	64
05-Jul-2024	12	3	1	16	690	27	663	193	470	50
12-Jul-2024	13	3	1	17	549	28	521	188	333	41
19-Jul-2024	13	3	1	17	588	28	560	180	380	50
26-Jul-2024	13	3	1	17	631	29	602	183	419	54
02-Aug-2024	13	3	1	17	598	27	571	181	390	59
09-Aug-2024	13	3	1	17	526	28	498	179	319	46
16-Aug-2024	13	3	1	17	609	24	585	184	401	69
23-Aug-2024	13	3	1	17	598	24	574	185	389	61
30-Aug-2024	13	3	1	17	598	25	573	186	387	63
06-Sep-2024	13	3	1	17	549	25	524	182	342	59
13-Sep-2024	13	3	1	17	535	25	510	183	327	56
20-Sep-2024	13	3	1	17	660	26	634	182	452	84
27-Sep-2024	13	3	1	17	755	27	728	184	544	52
04-Oct-2024	13	3	1	17	989	25	964	183	781	79
11-Oct-2024	12	3	1	16	857	26	831	185	646	69
18-Oct-2024	12	3	1	16	769	25	744	188	556	57
25-Oct-2024	12	3	1	16	766	26	740	192	548	57
01-Nov-2024	12	3	1	16	760	25	735	186	549	69
08-Nov-2024	12	2	1	15	724	25	699	189	510	53
15-Nov-2024	12	2	1	15	710	25	685	187	498	53
22-Nov-2024	12	2	1	15	710	24	686	190	496	39
29-Nov-2024	12	2	1	15	751	24	727	187	540	43
06-Dec-2024	11	2	1	14	688	24	664	188	476	48
13-Dec-2024	11	2	1	14	711	21	690	184	506	57
20-Dec-2024	11	2	1	14	692	22	670	180	490	54
27-Dec-2024	11	2	1	14	702	23	679	178	501	41
03-Jan-2025	11	2	1	14	794	22	772	179	593	47
10-Jan-2025	11	2	1	14	778	22	756	180	576	46
17-Jan-2025	11	2	1	14	752	22	730	182	548	53
24-Jan-2025	11	2	1	14	957	20	937	182	755	78
31-Jan-2025	11	2	1	14	862	21	841	184	657	60
07-Feb-2025	11	2	1	14	828	9	819	180	639	73
14-Feb-2025	11	2	1	14	746	8	738	180	558	68
21-Feb-2025	11	2	1	14	778	7	771	181	590	52
28-Feb-2025	11	2	1	14	718	6	712	180	532	58
07-Mar-2025	11	2	1	14	679	6	673	178	495	56
14-Mar-2025	11	2	1	14	664	6	658	175	483	56
21-Mar-2025	11	2	1	14	703	8	695	173	522	38
28-Mar-2025	11	2	1	14	775	9	766	173	593	55
04-Apr-2025	11	2	1	14	772	9	763	171	592	42
11-Apr-2025	11	2	1	14	804	9	795	169	626	63
18-Apr-2025	11	2	1	14	895	10	885	168	717	50
25-Apr-2025	11	2	1	14	962	9	953	162	791	54
02-May-2025	11	2	1	14	1094	9	1085	168	917	49
09-May-2025	11	2	1	14	1192	9	1183	171	1012	58
16-May-2025	11	2	1	14	1355	8	1347	178	1169	62
23-May-2025	11	2	1	14	1453	8	1445	181	1264	69