

Friday Report – overview and contents

The pages in The Friday Report are about adult offenders in Georgia’s prisons and jails. They contain statistical snapshots and trends in the populations and movements of offenders in the state prison system, on probation, on parole, and in local jails. Information comes from databases of the Georgia Department of Corrections (GDC) and the Board of Pardons and Paroles, and from data provided by local jailers. Information is summarized into tables in the GDC/Parole Data Warehouse, and is extracted into these pages each Friday. Pages are organized according to the table that supplied the data.

The Monthly Research Table, named “MO_RESRCH” or simply “MO”, contains data about state prisoners, grouped into statistically interesting categories. The table contains one record per month, from January 2000 to the present. Despite its being “monthly”, it is updated weekly, because some data trickles in for several weeks before it becomes stable history.	
Page	Contents
MO-01	Clemencies and maxouts. Monthly graph from 2000 to present shows the monthly departures from prison via actions by the Georgia Parole Board (clemencies), and via service of 100% of the court ordered sentence (maxouts)
MO-02	48 months of releases. Table shows counts and percentages of releases via clemencies and maxouts, with and without probation to follow, for each of the past 48 months.
MO-03	Methamphetamine. Monthly graph from 2000 to present shows admissions, departures, population, and percent of population of inmates with a current offense of methamphetamine possession, sale, manufacturing, or trafficking, and the changing racial composition of the methamphetamine population.
MO-04	Non-violent first incarcerants. Monthly graph from 2000 to present shows admissions, departures, population, and percent of population of inmates without violent or sex crimes, who are serving their first Georgia felony incarceration.
MO-05	Seven Deadly Sins. Monthly graph from 2000 to present shows admissions, departures, population, and percent of population of inmates convicted of kidnapping, armed robbery, rape, aggravated sodomy, aggravated sexual battery, and aggravated child molestation, for whom especially severe penalties are prescribed.
MO-06	48 months of inmate subpopulations. Table shows number and percentage of white and non-white inmates with methamphetamine offenses, and non-violent first incarcerants, and inmates convicted of the Seven Deadly Sins.
MO-07	Inmate age overview. Line graph shows the average age of the inmate population, by month from 2000 to the present. Pie chart shows the number of currently active inmates in their teens, twenties, thirties, forties, fifties, and age sixty+.
MO-08	Counts by age group. Graphs show the count, by month from 2000 to the present, of inmates in their teens, twenties, thirties, forties, fifties, and age sixty+.
MO-09	Percentages by age group. Graphs show the <i>percentages</i> , by month from 2000 to the present, of inmates in their teens, twenties, thirties, forties, fifties, and age sixty+.
MO-10	48 months of inmate ages. Table shows average age of the standing population, and counts and percentages of teens, twenties, thirties, forties, fifties, and sixty+, for each of the past 48 months.

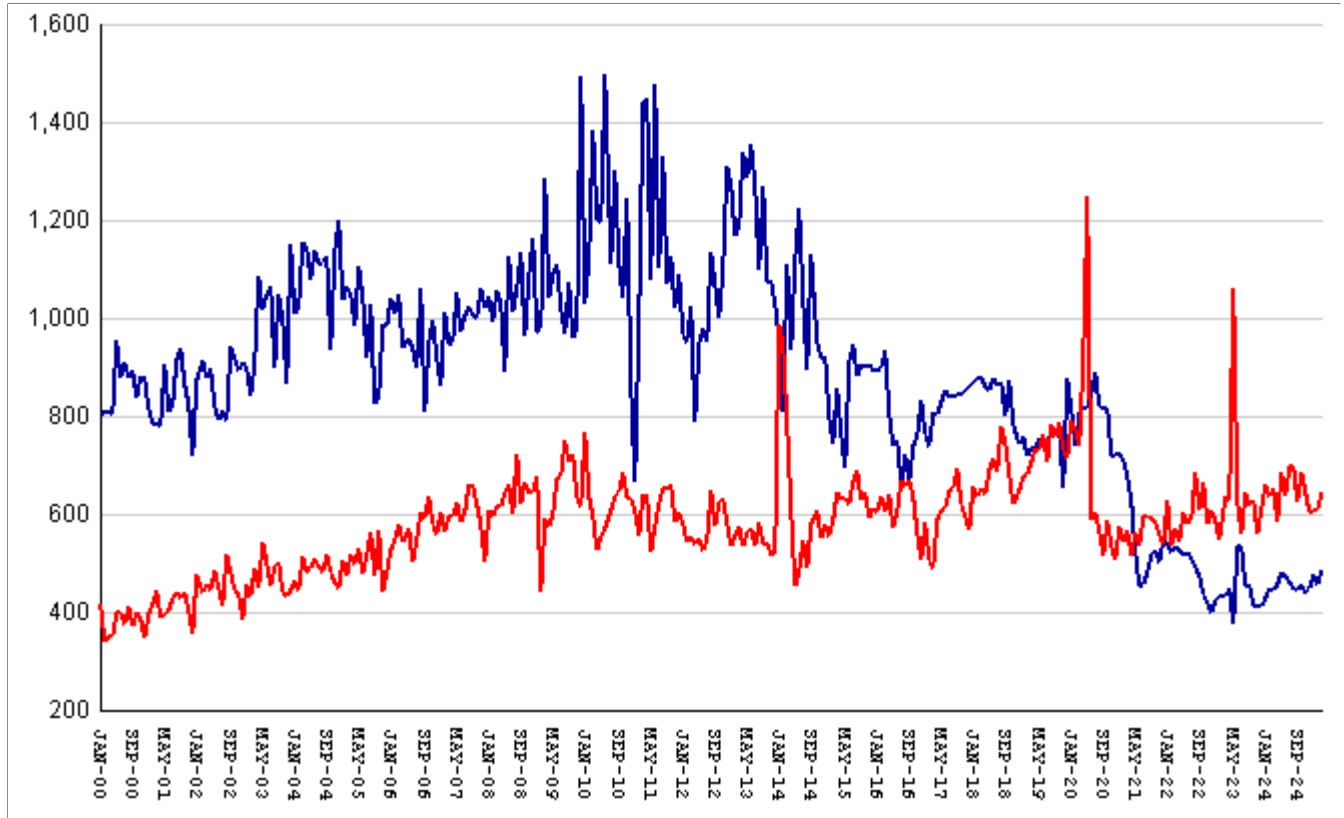
Friday Report – overview and contents *(continued)*

The MSR Table is based on the Management Summary Report (MSR), a snapshot report posted each week in GDC's Scribe database. MSR_RESRCH gathers that data into weekly trends, with one record for each Friday since March 20th, 2009.	
Page	Contents
MSR-01	All housed offenders. Weekly graph from March 20, 2009 to present, showing counts of inmates in state prisons, transitional centers, county prisons, private prisons, inmate boot camps, parole revocation centers, probation Residential Substance Abuse Treatment (RSAT), probation boot camps, probation detention centers, plus the inmate jail backlog and probationers in jail waiting for state facilities.
MSR-02	Probationers in jail. Weekly graph from March 20, 2009 to present, showing counts of probationers in local jails awaiting placement in probation detention centers, probation RSAT centers, and probation boot camps.
MSR-03	State inmates in jail. Weekly graph from March 20, 2009 to present, showing counts of state inmates in local jails awaiting placement in state prison facilities – including those who have not yet been assigned to a diagnostic center, those whose transportation has been delayed for some reason, and those who are ready to be picked up.
MSR-04	Female state inmates in jail. Weekly graph from March 20, 2009 to present, showing counts of female state inmates awaiting placement in a state prison for females.
MSR-05	52-week table: housed offenders. Data for each of the past 52 weeks, showing total prison inmates, parolees in revocation centers, probationers in RSAT/boot camp/detention centers, inmate jail backlog, probationers in jail waiting for facilities, with subtotals.
MSR-06	52-week table: state prisoners. Data for each of the past 52 weeks, showing inmates in state prisons, transition centers, county prisons, pre-release centers, private prisons, and inmate boot camps, with subtotals.
MSR-07	52-week table: waiting in jail. Data for each of the past 52 weeks, showing probationers waiting for detention centers, RSAT, and boot camp; and state prisoners not yet assigned to diagnostic centers, in admission process, with delayed transport, and ready for pickup, with subtotals.

The DCA table consists mainly of data submitted from each of Georgia's 140+ local jails, via the Georgia Crime Information Center (GCIC) to the Georgia Department of Community Affairs (DCA), which publishes its <u>County Jail Inmate Population Report</u> on its web site each month. GDC has collected summary statewide data from this report every month since its inception in January, 1993. The table also contains the inmate jail backlog as computed by GDC for the last Friday of each month, for comparison with the jailers' count of state inmates. Although nominally a monthly table, DCA_RESRCH is updated weekly to insure that the DCA data is correctly synchronized with the GDC jail backlog data.	
Page	Contents
DCA-01	Jail composition. Monthly graph from 1993 to the present shows trends in the numbers of unsentenced inmates, state inmates, county inmates, and other inmates.
DCA-02	Two views of jail backlog. Monthly graph from 1993 to present compares jailers' count of "state inmates" with GDC's count of the "inmate jail backlog", and explains that both are valid counts of different phenomena.
DCA-03	48-month table: local jails. Data from Georgia jailers for each of the past 48 months, showing total jail population, capacity, utilization, and number and percent of unsentenced inmates, state inmates, county inmates, and other inmates.

Releases by clemency and maxout, Jan-2000 to Mar-2025

There are two main ways of being released from a Georgia prison -- by actions of the Board of Pardons and Paroles ("Clemencies") and by service of 100% of the court-ordered sentences ("Maxouts"). "Clemency" includes paroles, reprieves, commutations, and transfer to other confinement prior to expiration of sentence. "Other Releases" includes deaths, and sentences modified or overturned by the courts. Clemencies and maxouts may or may not be followed by periods of probation.



A. Clemency with probation to follow	RISES BY	33	from	401	to	434
B. Clemency only	falls by	2	from	55	to	53
C. Maxout with probation to follow	RISES BY	47	from	548	to	595
D. Maxout only (unsupervised)	falls by	8	from	59	to	51
E. Other releases	RISES BY	6	from	17	to	23
F. Total releases (A+B+C+D+E)	RISES BY	76	from	1080	to	1156
G. Total clemencies (A+B) (top line)	RISES BY	31	from	456	to	487
H. Total maxouts(C+D) (bottom line)	RISES BY	39	from	607	to	646
I. % of releases by clemency (G/F)	falls by	.09%	from	42.22%	to	42.13%
J. % of releases by maxout (H/F)	falls by	.32%	from	56.2%	to	55.88%
K. Supervised releases (A+B+C)	RISES BY	78	from	1004	to	1082
L. % unsupervised releases (D/F)	falls by	1.05%	from	5.46%	to	4.41%
M. % supervised releases (K/F)	RISES BY	.64%	from	92.96%	to	93.6%

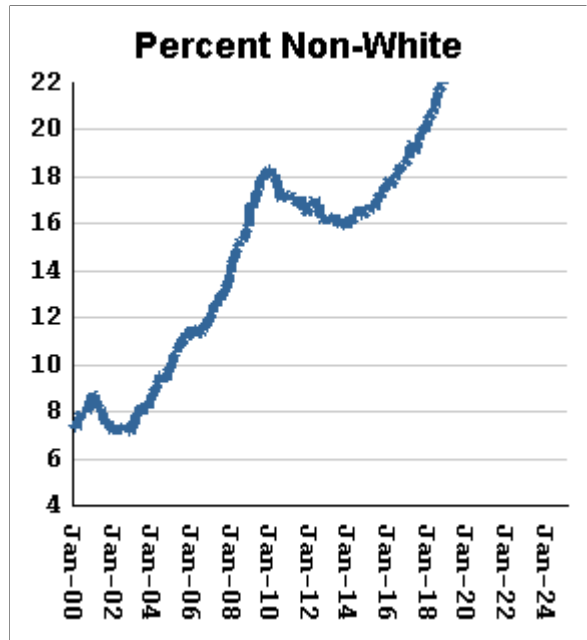
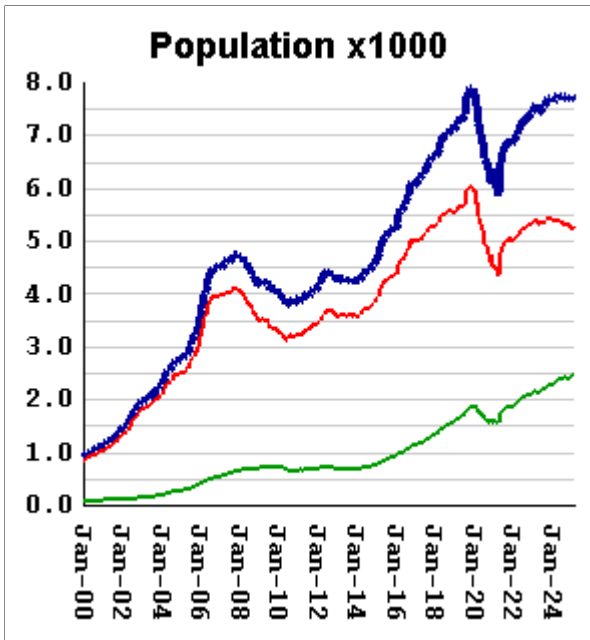
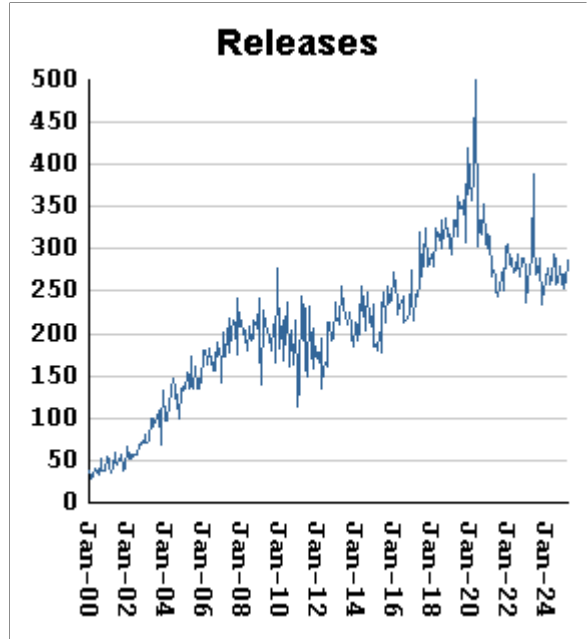
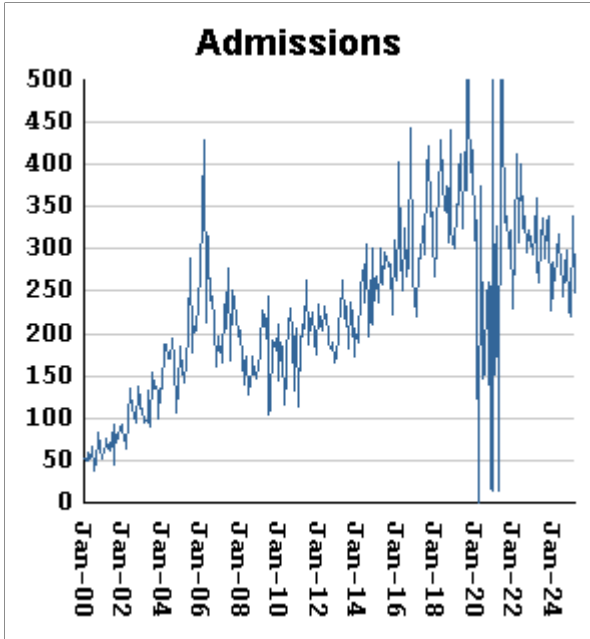
Monthly releases from prison by type of release, for the past 48 months

Month	A	B	C	D	E	F	G	H	I	J
	Clemency + Prob	Clemency Only	Maxout + Prob	Maxout Only	Other Rels	Total Releases (A+B+C+D+E)	Total Clemency (A+B)	Total Maxout (C+D)	Percent Clemency (G/F)	Percent Maxout (H/F)
Apr-21	532	97	454	61	24	1168	629	515	53.85%	44.09%
May-21	444	79	509	53	21	1106	523	562	47.29%	50.81%
Jun-21	367	85	468	67	21	1008	452	535	44.84%	53.08%
Jul-21	392	65	534	63	19	1073	457	597	42.59%	55.64%
Aug-21	410	71	529	66	28	1104	481	595	43.57%	53.89%
Sep-21	440	79	522	68	32	1141	519	590	45.49%	51.71%
Oct-21	446	79	526	56	21	1128	525	582	46.54%	51.60%
Nov-21	425	79	494	64	18	1080	504	558	46.67%	51.67%
Dec-21	469	82	483	56	18	1108	551	539	49.73%	48.65%
Jan-22	459	80	552	75	26	1192	539	627	45.22%	52.60%
Feb-22	443	81	464	72	24	1084	524	536	48.34%	49.45%
Mar-22	460	73	515	56	16	1120	533	571	47.59%	50.98%
Apr-22	454	74	471	70	16	1085	528	541	48.66%	49.86%
May-22	440	78	540	63	26	1147	518	603	45.16%	52.57%
Jun-22	458	63	527	58	21	1127	521	585	46.23%	51.91%
Jul-22	442	68	529	60	14	1113	510	589	45.82%	52.92%
Aug-22	426	66	618	66	21	1197	492	684	41.10%	57.14%
Sep-22	396	79	549	59	18	1101	475	608	43.14%	55.22%
Oct-22	374	61	606	60	23	1124	435	666	38.70%	59.25%
Nov-22	367	53	523	55	19	1017	420	578	41.30%	56.83%
Dec-22	344	58	550	59	28	1039	402	609	38.69%	58.61%
Jan-23	377	49	526	60	23	1035	426	586	41.16%	56.62%
Feb-23	388	46	494	52	17	997	434	546	43.53%	54.76%
Mar-23	377	55	573	63	24	1092	432	636	39.56%	58.24%
Apr-23	390	57	574	53	26	1100	447	627	40.64%	57.00%
May-23	328	46	932	129	20	1455	374	1061	25.70%	72.92%
Jun-23	464	69	566	60	19	1178	533	626	45.25%	53.14%
Jul-23	461	72	515	44	25	1117	533	559	47.72%	50.04%
Aug-23	402	52	593	51	22	1120	454	644	40.54%	57.50%
Sep-23	405	53	578	42	10	1088	458	620	42.10%	56.99%
Oct-23	363	51	577	52	31	1074	414	629	38.55%	58.57%
Nov-23	355	56	495	63	19	988	411	558	41.60%	56.48%
Dec-23	366	47	554	57	21	1045	413	611	39.52%	58.47%
Jan-24	369	60	600	61	32	1122	429	661	38.24%	58.91%
Feb-24	396	51	577	60	24	1108	447	637	40.34%	57.49%
Mar-24	380	63	590	63	20	1116	443	653	39.70%	58.51%
Apr-24	412	45	528	57	33	1075	457	585	42.51%	54.42%
May-24	427	55	611	73	26	1192	482	684	40.44%	57.38%
Jun-24	409	64	577	59	23	1132	473	636	41.78%	56.18%
Jul-24	399	61	632	66	38	1196	460	698	38.46%	58.36%
Aug-24	382	67	641	57	19	1166	449	698	38.51%	59.86%
Sep-24	381	63	561	65	34	1104	444	626	40.22%	56.70%
Oct-24	401	58	629	57	28	1173	459	686	39.13%	58.48%
Nov-24	389	53	591	55	23	1111	442	646	39.78%	58.15%
Dec-24	390	59	556	48	33	1086	449	604	41.34%	55.62%
Jan-25	419	59	560	49	30	1117	478	609	42.79%	54.52%
Feb-25	401	55	548	59	17	1080	456	607	42.22%	56.20%
Mar-25	434	53	595	51	23	1156	487	646	42.13%	55.88%

Inmates with meth crimes, by month, Jan-2000 to Mar-2025

Methamphetamine is one of the most addictive drugs ever known. At first it induces intense euphoria, but with continued use causes severe depression and physical deterioration, including the dental catastrophe known as "meth mouth".

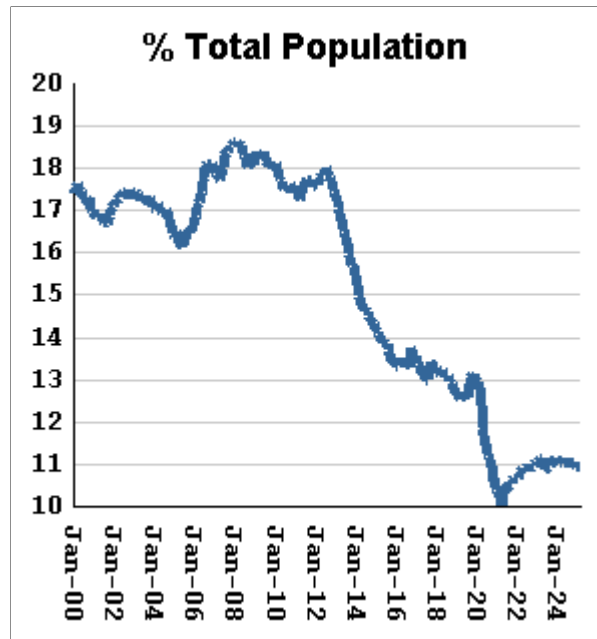
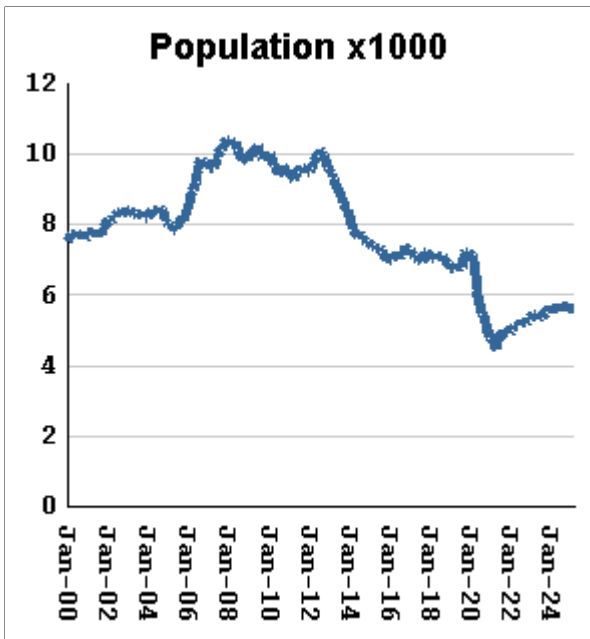
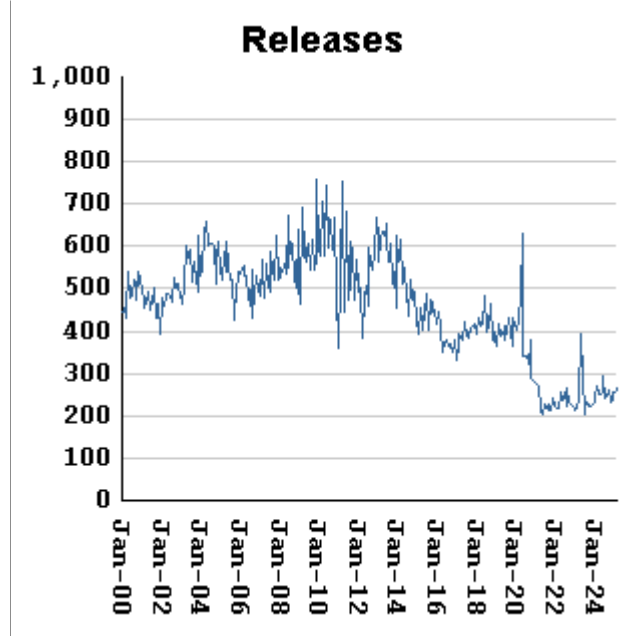
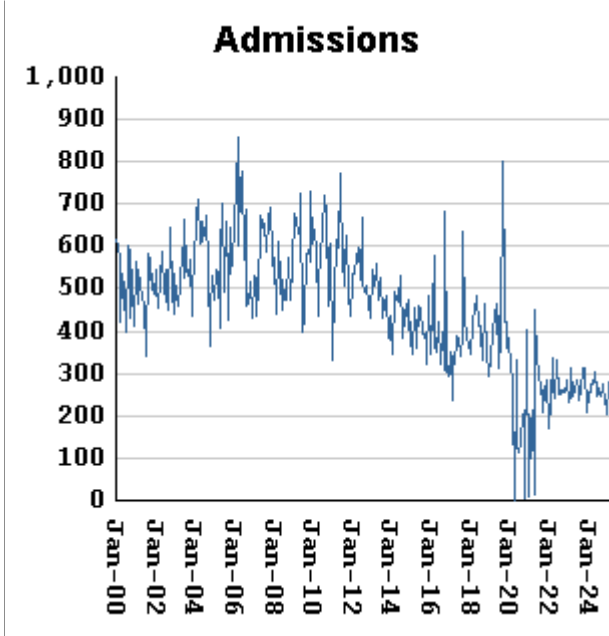
Georgia's meth epidemic peaked in 2007-2008, then declined, but is again growing. It started in the predominantly white northern counties, with blacks accounting for only about 5% of convictions. But black usage has expanded, and now accounts for about 15% of convictions.



Methamphetamine admissions	fall by	89	from	338	to	249
Methamphetamine releases	RISE BY	27	from	260	to	287
Methamphetamine population	falls by	38	from	7741	to	7703
Meth white population	falls by	40	from	5275	to	5235
Meth non-white population	RISES BY	12	from	2466	to	2478
Percent meth inmates who are non-white	RISES BY	.31 %	from	31.86%	to	32.17%

Non-violent first-incarcerants, by month, Jan-2000 to Mar-2025

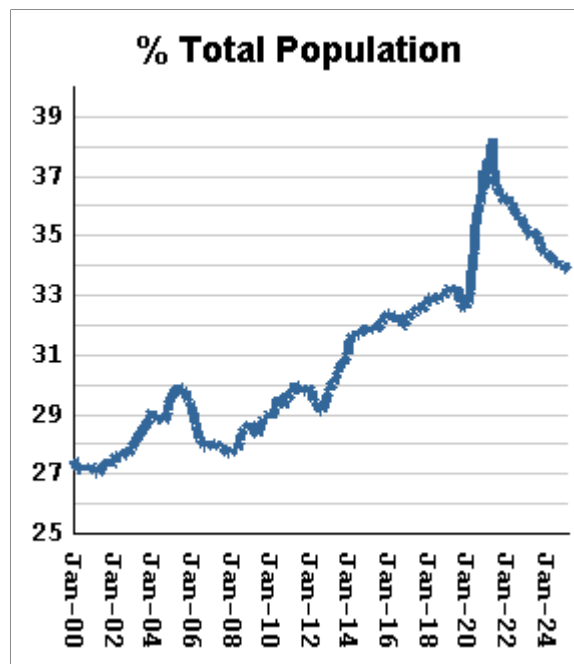
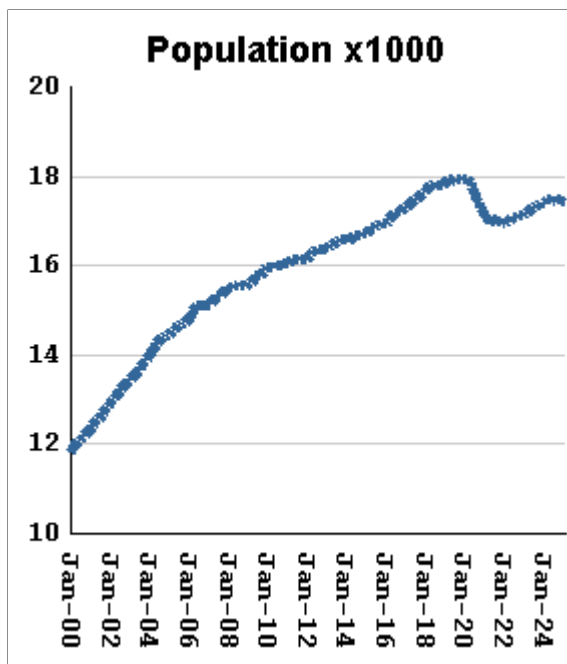
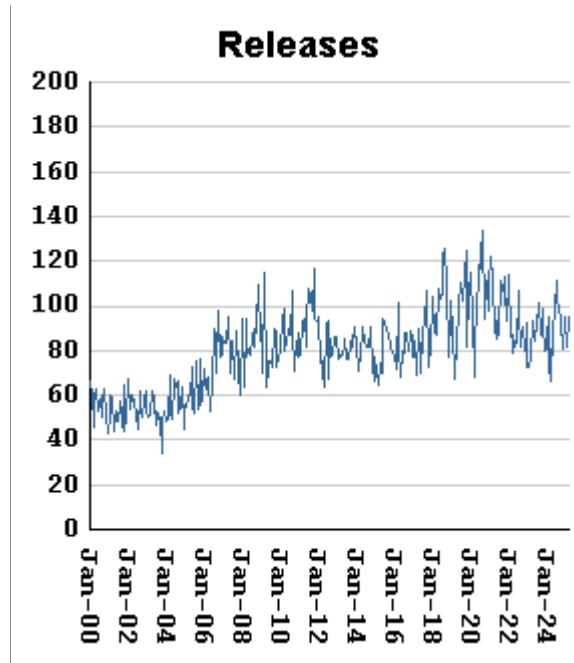
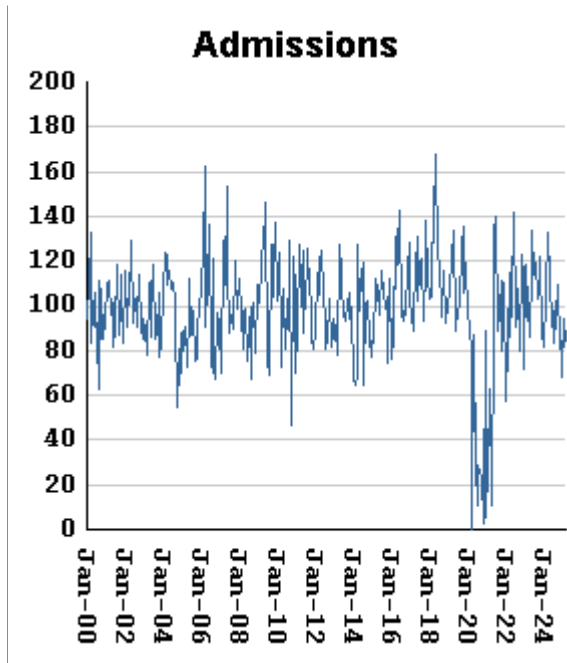
Historically, about one in six Georgia prison inmates has been a first-time incarcerant with a non-violent crime. In 2012 Georgia passed HB1176, which aimed to curb the growth of prison population by steering the least dangerous, least hardened offenders away from prison through pre-trial intervention, diversion, drug courts and treatment programs, and raising the dollar thresholds that define property felonies. The expectation is that over time, these measures will reduce the percentage of first-time non-violent incarcerants in prison.



Non-viol/1st-Incar admissions	fall by	4	from	279	to	275
Non-viol/1st-Incar releases	RISE BY	10	from	256	to	266
Non-viol/1st-Incar population	RISES BY	9	from	5627	to	5636
Non-viol/1st-Incar % of total population	falls by	0 %	...	10.93%	at	10.93%

"Seven Deadly Sins" by month, Jan-2000 to Mar-2025

Tough legislation in 1995 imposed mandatory ten-year minimum terms for kidnapping, armed robbery, rape, aggravated sodomy, aggravated sexual battery, and aggravated child molestation, and a minimum of 25 years for murder. A second conviction resulted in life without parole. As predicted, longer prison terms caused population to climb steeply for about a decade. It then began to level off, as releases started catching up with admissions. The 2008 dip in percentage of total population (bottom right) was caused by the surge of methamphetamine convictions (Page MO-03). Note: these graphs include inmates convicted before 1995.



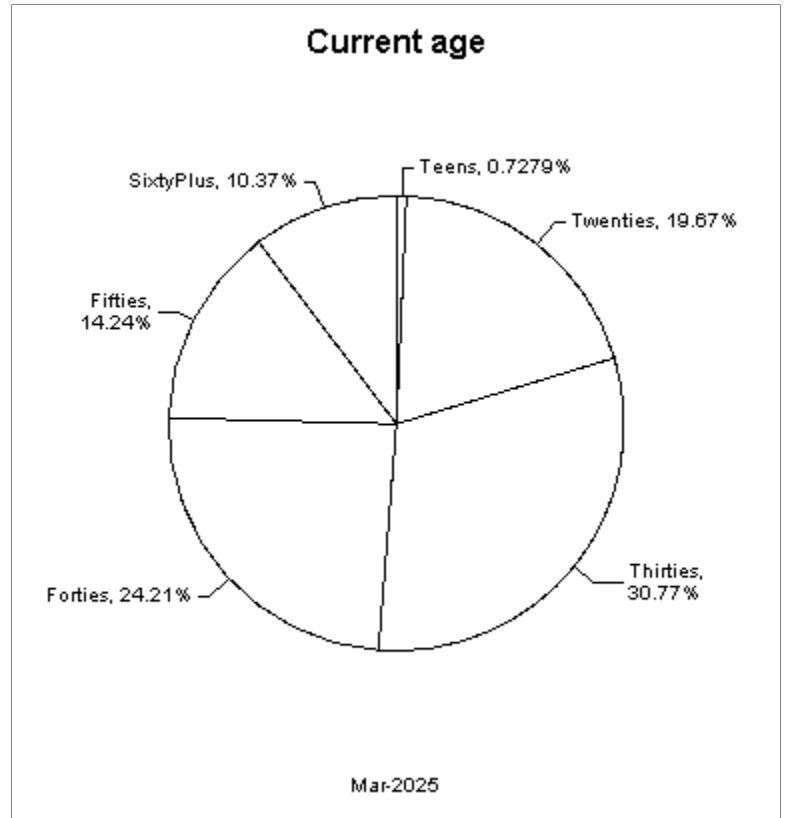
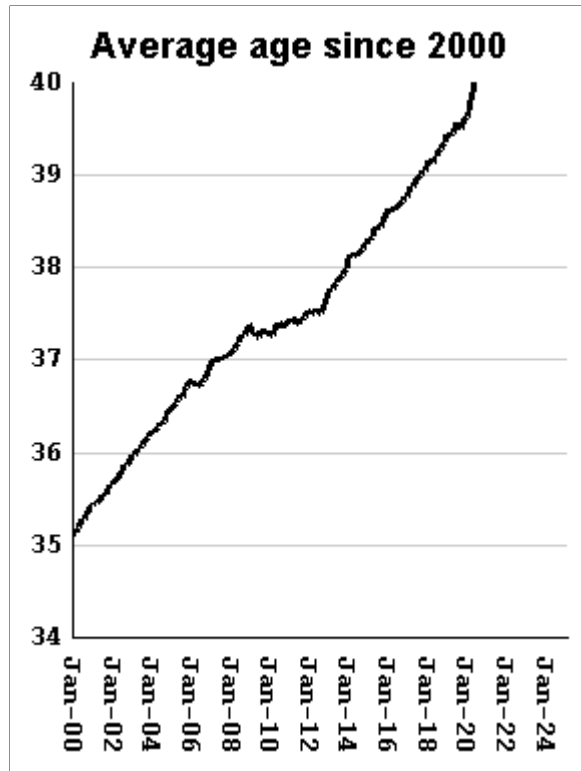
"Seven Deadly Sin" admissions	fall by	10	from	94	to	84
"Seven Deadly Sin" releases	RISE BY	13	from	82	to	95
"Seven Deadly Sin" population	falls by	11	from	17453	to	17442
"Seven Deadly Sin" % of total population	falls by	.06 %	from	33.89%	to	33.83%

Inmate subpopulation counts and percentages, for the past 48 months

Month	Methamphetamine						1st Incar Non-Violent		Seven Deadly Sins	
	Total Number	Total Percent	White Number	White Percent	Non White Number	Non White Percent	Number	Percent	Number	Percent
Apr-21	5848	13.19%	4305	73.61%	1550	26.50%	4416	9.96%	16953	38.23%
May-21	6192	13.71%	4606	74.39%	1656	26.74%	4656	10.31%	16952	37.54%
Jun-21	6457	14.06%	4755	73.64%	1742	26.98%	4775	10.40%	17001	37.03%
Jul-21	6676	14.36%	4893	73.29%	1790	26.81%	4860	10.45%	17052	36.67%
Aug-21	6753	14.48%	4949	73.29%	1820	26.95%	4894	10.49%	17030	36.51%
Sep-21	6822	14.59%	4989	73.13%	1840	26.97%	4928	10.54%	17028	36.40%
Oct-21	6846	14.63%	5007	73.14%	1846	26.96%	4925	10.52%	16995	36.31%
Nov-21	6913	14.73%	5061	73.21%	1868	27.02%	4979	10.61%	17000	36.23%
Dec-21	6931	14.73%	5067	73.11%	1871	26.99%	5021	10.67%	17017	36.17%
Jan-22	6856	14.68%	5021	73.24%	1871	27.29%	4967	10.64%	16960	36.33%
Feb-22	6884	14.73%	5045	73.29%	1897	27.56%	4985	10.67%	16958	36.29%
Mar-22	7006	14.87%	5078	72.48%	1935	27.62%	5091	10.81%	16986	36.06%
Apr-22	7028	14.90%	5092	72.45%	1943	27.65%	5132	10.88%	16993	36.02%
May-22	7070	14.97%	5119	72.40%	1975	27.93%	5115	10.83%	17013	36.01%
Jun-22	7192	15.09%	5192	72.19%	2009	27.93%	5208	10.92%	17072	35.81%
Jul-22	7223	15.11%	5200	71.99%	2030	28.10%	5203	10.89%	17058	35.69%
Aug-22	7279	15.22%	5256	72.21%	2053	28.20%	5238	10.95%	17053	35.66%
Sep-22	7310	15.26%	5238	71.66%	2078	28.43%	5224	10.90%	17079	35.65%
Oct-22	7316	15.27%	5264	71.95%	2083	28.47%	5252	10.96%	17068	35.62%
Nov-22	7350	15.25%	5312	72.27%	2081	28.31%	5281	10.96%	17111	35.50%
Dec-22	7384	15.22%	5308	71.89%	2082	28.20%	5343	11.01%	17132	35.31%
Jan-23	7439	15.30%	5340	71.78%	2119	28.49%	5361	11.02%	17131	35.23%
Feb-23	7503	15.37%	5375	71.64%	2148	28.63%	5388	11.03%	17176	35.18%
Mar-23	7583	15.43%	5425	71.54%	2164	28.54%	5475	11.14%	17197	34.99%
Apr-23	7577	15.42%	5431	71.68%	2152	28.40%	5478	11.15%	17190	34.97%
May-23	7448	15.22%	5338	71.67%	2140	28.73%	5345	10.92%	17224	35.19%
Jun-23	7452	15.14%	5311	71.27%	2147	28.81%	5334	10.84%	17273	35.10%
Jul-23	7517	15.23%	5372	71.46%	2186	29.08%	5386	10.91%	17295	35.03%
Aug-23	7534	15.24%	5339	70.87%	2200	29.20%	5403	10.93%	17313	35.01%
Sep-23	7534	15.18%	5335	70.81%	2203	29.24%	5436	10.96%	17329	34.93%
Oct-23	7630	15.28%	5403	70.81%	2240	29.36%	5526	11.06%	17340	34.72%
Nov-23	7709	15.29%	5449	70.68%	2264	29.37%	5617	11.14%	17371	34.46%
Dec-23	7690	15.25%	5435	70.68%	2259	29.38%	5598	11.10%	17378	34.45%
Jan-24	7677	15.21%	5425	70.67%	2279	29.69%	5615	11.13%	17369	34.42%
Feb-24	7686	15.20%	5407	70.35%	2282	29.69%	5600	11.08%	17404	34.43%
Mar-24	7672	15.13%	5374	70.05%	2301	29.99%	5605	11.05%	17416	34.34%
Apr-24	7710	15.12%	5382	69.81%	2342	30.38%	5629	11.04%	17483	34.28%
May-24	7762	15.16%	5391	69.45%	2374	30.58%	5683	11.10%	17506	34.20%
Jun-24	7741	15.11%	5374	69.42%	2370	30.62%	5667	11.06%	17497	34.15%
Jul-24	7719	15.06%	5344	69.23%	2399	31.08%	5652	11.03%	17484	34.11%
Aug-24	7706	15.03%	5314	68.96%	2394	31.07%	5662	11.04%	17465	34.06%
Sep-24	7722	15.08%	5315	68.83%	2408	31.18%	5661	11.05%	17461	34.09%
Oct-24	7742	15.06%	5334	68.90%	2408	31.10%	5672	11.03%	17478	34.00%
Nov-24	7706	15.01%	5300	68.78%	2406	31.22%	5667	11.03%	17478	34.03%
Dec-24	7713	15.01%	5293	68.62%	2420	31.38%	5656	11.00%	17468	33.98%
Jan-25	7663	14.95%	5251	68.52%	2412	31.48%	5604	10.93%	17441	34.02%
Feb-25	7741	15.03%	5275	68.14%	2466	31.86%	5627	10.93%	17453	33.89%
Mar-25	7703	14.94%	5235	67.96%	2478	32.17%	5636	10.93%	17442	33.83%

Overview of inmate age statistics, Jan-2000 to Mar-2025

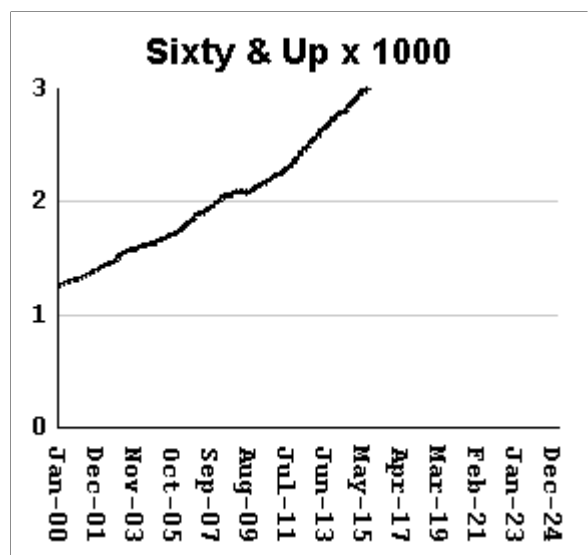
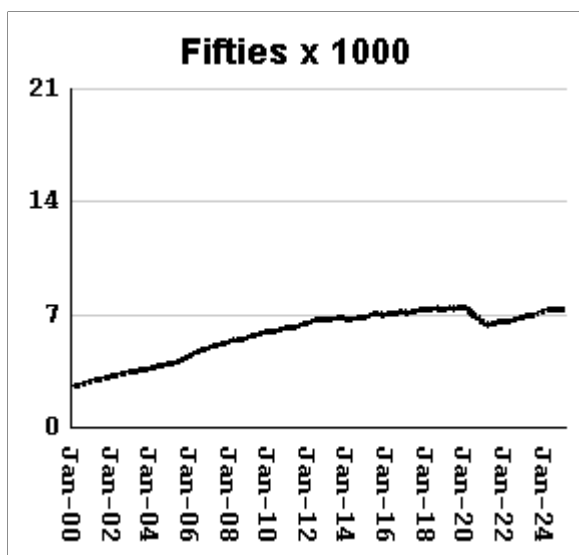
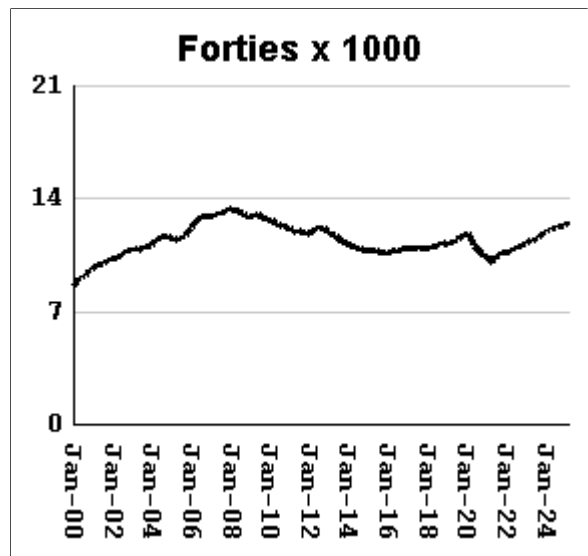
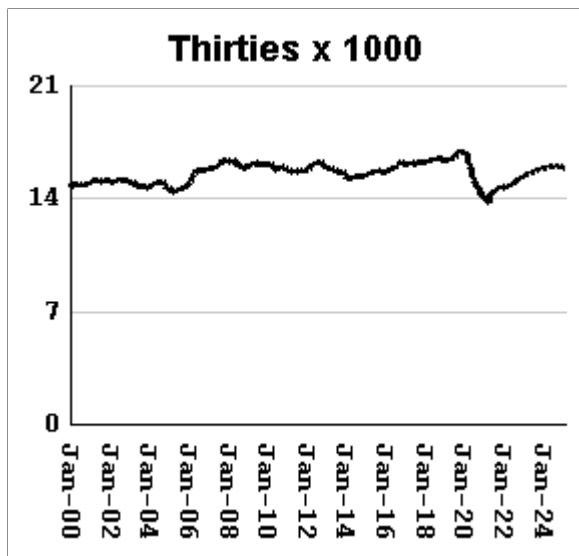
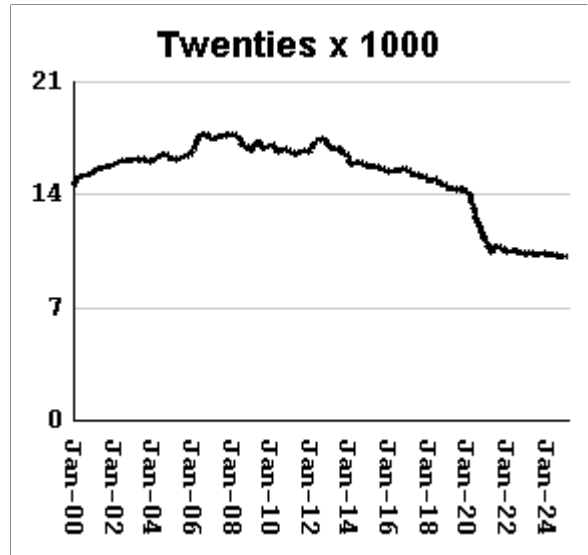
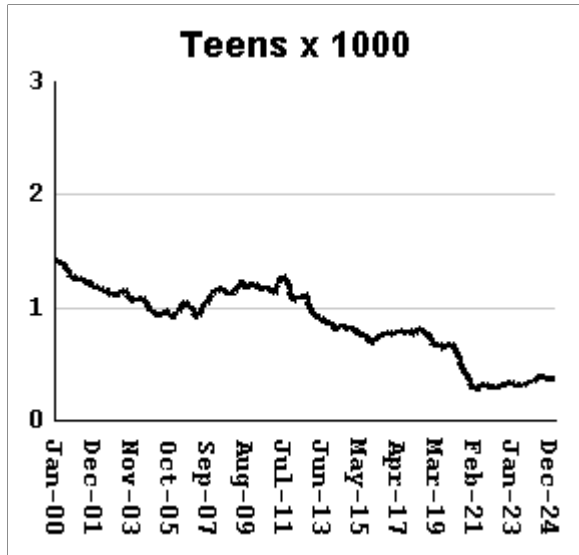
The "aging inmate population" is a concern in correctional systems throughout America, including Georgia. Here, the increase in inmate age is the result of several factors. Teenagers have been steered away from prison by increased usage of probation and other alternatives, at least for their first convictions. And there has been a surge of middle-aged male sex offenders due to the expanding "It's OK to tell" ethos. But most importantly, more severe sentence lengths and release policies have greatly increased the length of time that most offenders -- especially violent ones -- spend in prison, thereby increasing their average age.



Average age of active inmates	RISES BY	.02	from	41.81	to	41.83
Number in their teens	RISES BY	12	from	364	to	376
Percentage in their teens	RISES BY	.02%	from	.71%	to	0.73%
Number in their twenties	RISES BY	3	from	10,156	to	10,159
Percentage in their twenties	falls by	0.01%	from	19.72%	to	19.71%
Number in their thirties	RISES BY	28	from	15,867	to	15,895
Percentage in their thirties	RISES BY	0.02%	from	30.81%	to	30.83%
Number in their forties	RISES BY	85	from	12,423	to	12,508
Percentage in their forties	RISES BY	0.14%	from	24.12%	to	24.26%
Number in their fifties	RISES BY	3	from	7355	to	7,358
Percentage in their fifties	falls by	0.01%	from	14.28%	to	14.27%
Number age sixty and up	RISES BY	25	from	5333	to	5,358
Percentage age sixty and up	RISES BY	.03%	from	10.36%	to	10.39%

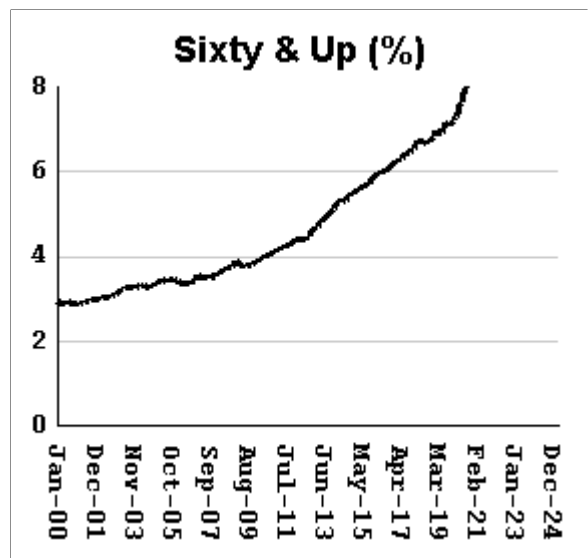
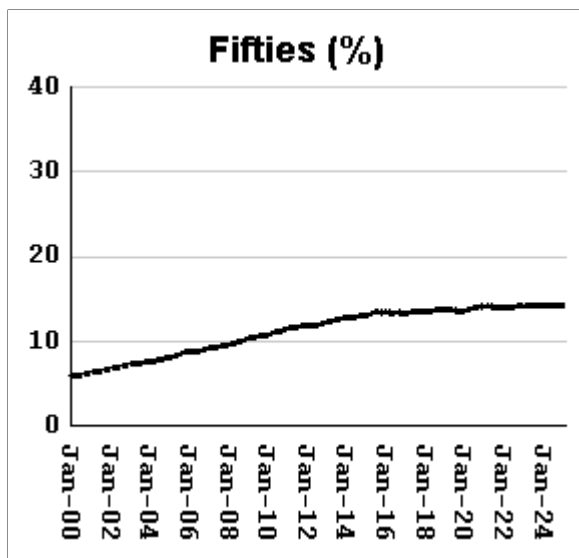
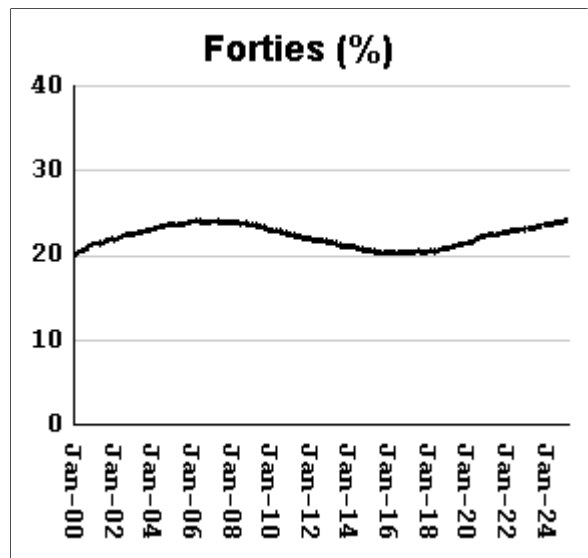
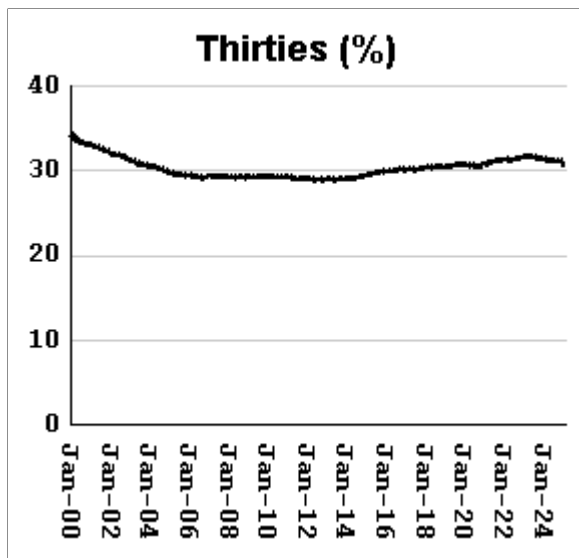
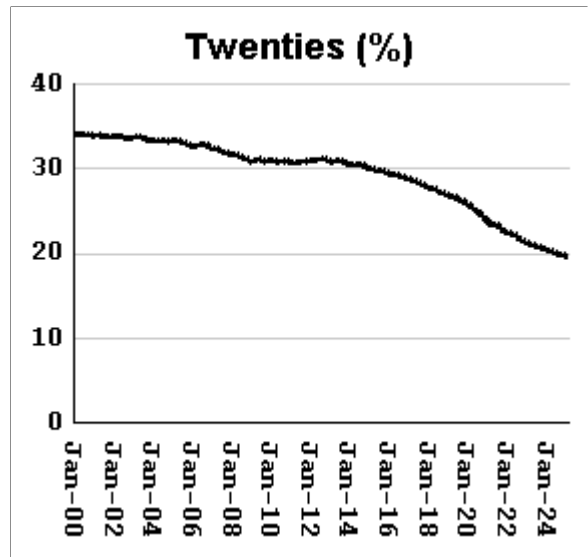
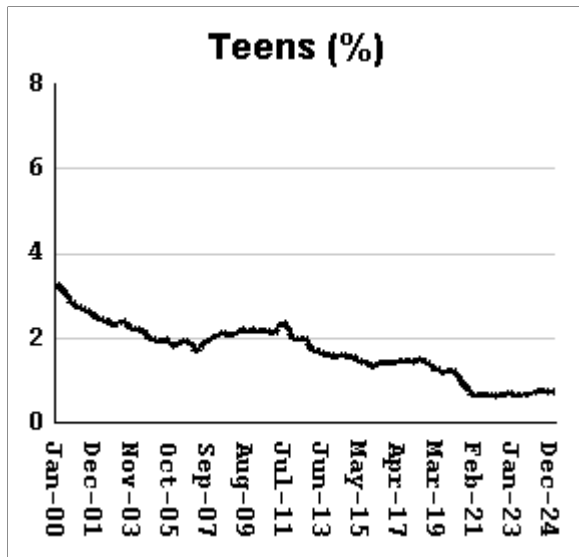
Monthly counts of inmates by age group, Jan-2000 to Mar-2025

Y-axis of Twenties/Thirties/Forties/Fifties runs from 0 to 21,000. Y-axis of Teens/Sixty+ runs from 0 to 3,000.



Monthly percentages of inmates by age group, Jan-2000 to Mar-2025

Y-axis of Twenties/Thirties/Forties/Fifties runs from 0% to 40%. Y-axis of Teens/Sixty+ runs from 0% to 8%

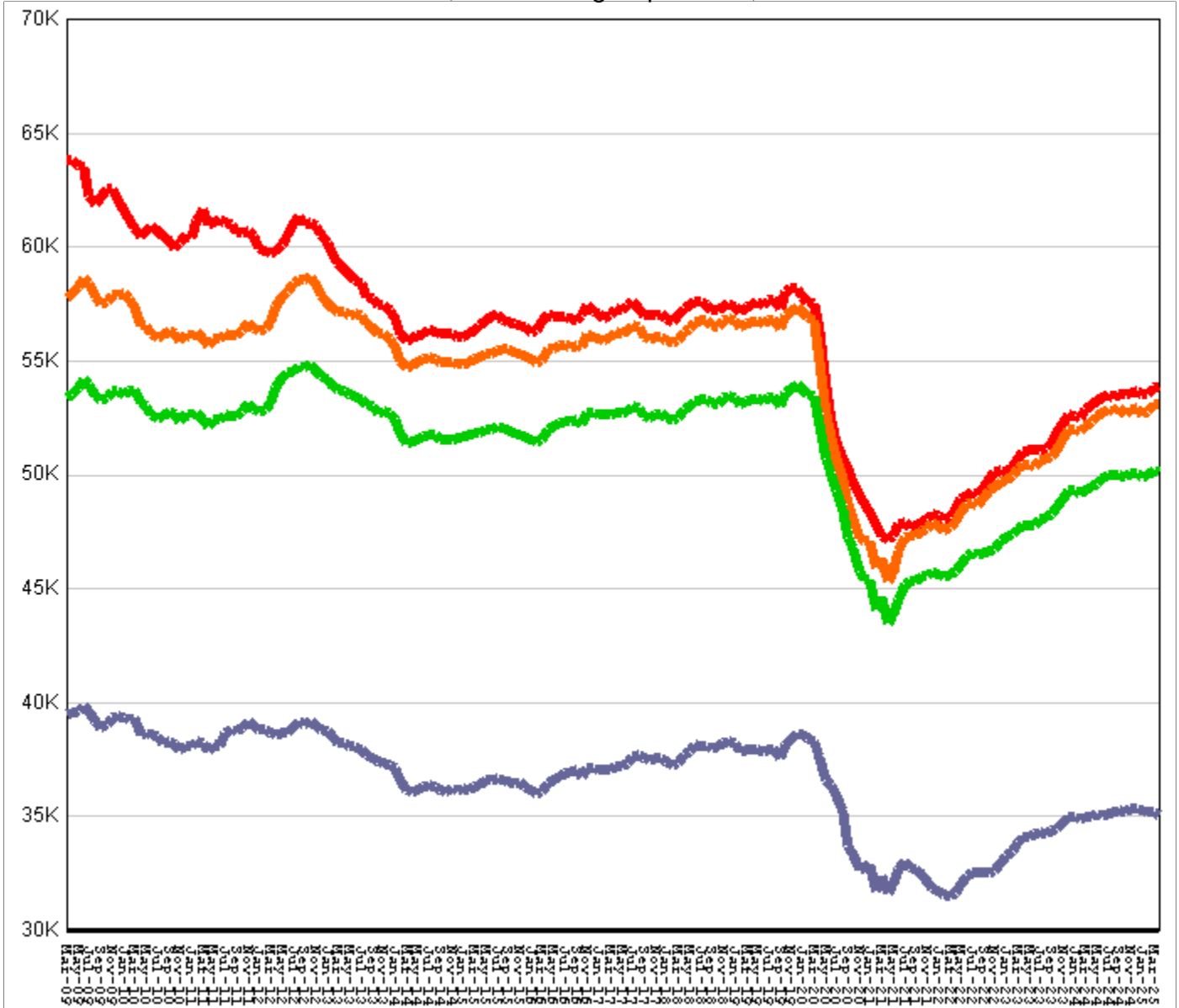


Inmate counts & percentages by age, for past 48 months

Month	Avg Age	Teens		Twenties		Thirties		Forties		Fifties		Sixty & Up	
		Number	Per-cent	Number	Per-cent	Number	Per-cent	Number	Per-cent	Number	Per-cent	Number	Per-cent
Apr-21	40.72	273	0.62%	10311	23.25%	13643	30.77%	9958	22.46%	6278	14.16%	3894	8.78%
May-21	40.66	290	0.64%	10580	23.43%	14019	31.04%	10170	22.52%	6370	14.11%	3947	8.74%
Jun-21	40.62	308	0.67%	10776	23.47%	14244	31.02%	10277	22.38%	6447	14.04%	4004	8.72%
Jul-21	40.61	317	0.68%	10850	23.33%	14426	31.02%	10383	22.33%	6491	13.96%	4047	8.70%
Aug-21	40.64	318	0.68%	10795	23.14%	14524	31.13%	10471	22.45%	6511	13.96%	4070	8.72%
Sep-21	40.68	317	0.68%	10737	22.96%	14593	31.20%	10494	22.44%	6520	13.94%	4125	8.82%
Oct-21	40.71	299	0.64%	10638	22.73%	14642	31.29%	10574	22.59%	6524	13.94%	4135	8.84%
Nov-21	40.73	299	0.64%	10626	22.65%	14700	31.33%	10651	22.70%	6532	13.92%	4151	8.85%
Dec-21	40.76	302	0.64%	10597	22.52%	14729	31.31%	10688	22.72%	6564	13.95%	4179	8.88%
Jan-22	40.82	293	0.63%	10474	22.43%	14636	31.35%	10641	22.79%	6568	14.07%	4187	8.97%
Feb-22	40.83	298	0.64%	10476	22.42%	14672	31.40%	10666	22.83%	6565	14.05%	4207	9.00%
Mar-22	40.83	295	0.63%	10523	22.34%	14763	31.34%	10729	22.77%	6575	13.96%	4236	8.99%
Apr-22	40.86	285	0.60%	10515	22.29%	14757	31.28%	10785	22.86%	6597	13.98%	4252	9.01%
May-22	40.89	282	0.60%	10500	22.23%	14808	31.35%	10818	22.90%	6598	13.97%	4288	9.08%
Jun-22	40.88	307	0.64%	10586	22.20%	14923	31.30%	10928	22.92%	6629	13.90%	4315	9.05%
Jul-22	40.92	316	0.66%	10541	22.05%	14966	31.31%	10970	22.95%	6671	13.96%	4342	9.08%
Aug-22	40.96	319	0.67%	10509	21.98%	15016	31.40%	11011	23.03%	6708	14.03%	4383	9.17%
Sep-22	41	316	0.66%	10427	21.77%	15039	31.39%	10982	22.92%	6736	14.06%	4415	9.22%
Oct-22	41.02	322	0.67%	10369	21.64%	15125	31.56%	11036	23.03%	6751	14.09%	4433	9.25%
Nov-22	41.04	334	0.69%	10392	21.56%	15227	31.59%	11138	23.11%	6798	14.10%	4478	9.29%
Dec-22	41.07	341	0.70%	10353	21.34%	15310	31.56%	11160	23.00%	6850	14.12%	4511	9.30%
Jan-23	41.1	329	0.68%	10330	21.24%	15390	31.65%	11198	23.03%	6870	14.13%	4554	9.36%
Feb-23	41.13	318	0.65%	10332	21.16%	15458	31.66%	11289	23.12%	6874	14.08%	4605	9.43%
Mar-23	41.12	318	0.65%	10385	21.13%	15547	31.63%	11377	23.15%	6923	14.09%	4606	9.37%
Apr-23	41.15	308	0.63%	10377	21.11%	15548	31.63%	11385	23.16%	6926	14.09%	4614	9.39%
May-23	41.18	314	0.64%	10332	21.11%	15550	31.77%	11360	23.21%	6918	14.13%	4629	9.46%
Jun-23	41.21	315	0.64%	10305	20.94%	15615	31.73%	11391	23.15%	6937	14.10%	4651	9.45%
Jul-23	41.24	322	0.65%	10315	20.90%	15687	31.78%	11502	23.30%	6976	14.13%	4686	9.49%
Aug-23	41.3	308	0.62%	10270	20.77%	15627	31.60%	11537	23.33%	6977	14.11%	4732	9.57%
Sep-23	41.32	318	0.64%	10284	20.73%	15646	31.53%	11601	23.38%	7003	14.11%	4768	9.61%
Oct-23	41.33	335	0.67%	10296	20.62%	15757	31.55%	11728	23.48%	7053	14.12%	4815	9.64%
Nov-23	41.35	336	0.67%	10389	20.61%	15857	31.46%	11858	23.52%	7120	14.13%	4851	9.62%
Dec-23	41.39	345	0.68%	10353	20.53%	15835	31.39%	11904	23.60%	7151	14.18%	4854	9.62%
Jan-24	41.41	350	0.69%	10336	20.48%	15912	31.53%	11916	23.61%	7182	14.23%	4875	9.66%
Feb-24	41.44	344	0.68%	10286	20.35%	15884	31.42%	11946	23.63%	7194	14.23%	4900	9.69%
Mar-24	41.47	351	0.69%	10298	20.31%	15904	31.36%	11994	23.65%	7231	14.26%	4938	9.74%
Apr-24	41.49	369	0.72%	10336	20.27%	15963	31.30%	12112	23.75%	7273	14.26%	4984	9.77%
May-24	41.52	382	0.75%	10332	20.18%	16000	31.26%	12135	23.71%	7306	14.27%	5034	9.83%
Jun-24	41.55	395	0.77%	10319	20.14%	16014	31.25%	12142	23.70%	7283	14.21%	5089	9.93%
Jul-24	41.59	394	0.77%	10303	20.10%	16041	31.29%	12221	23.84%	7293	14.23%	5137	10.02%
Aug-24	41.62	382	0.74%	10235	19.96%	16020	31.24%	12225	23.84%	7273	14.18%	5142	10.03%
Sep-24	41.66	382	0.75%	10189	19.89%	15955	31.15%	12248	23.91%	7283	14.22%	5165	10.08%
Oct-24	41.68	380	0.74%	10219	19.88%	15999	31.12%	12253	23.84%	7320	14.24%	5232	10.18%
Nov-24	41.72	375	0.73%	10152	19.77%	15988	31.13%	12285	23.92%	7286	14.19%	5268	10.26%
Dec-24	41.76	376	0.73%	10142	19.73%	15945	31.02%	12329	23.99%	7324	14.25%	5284	10.28%
Jan-25	41.81	380	0.74%	10088	19.68%	15813	30.85%	12343	24.08%	7334	14.31%	5303	10.34%
Feb-25	41.81	364	0.71%	10156	19.72%	15867	30.81%	12423	24.12%	7355	14.28%	5333	10.36%
Mar-25	41.83	376	0.73%	10159	19.71%	15895	30.83%	12508	24.26%	7358	14.27%	5358	10.39%

All housed offenders under GDC jurisdiction

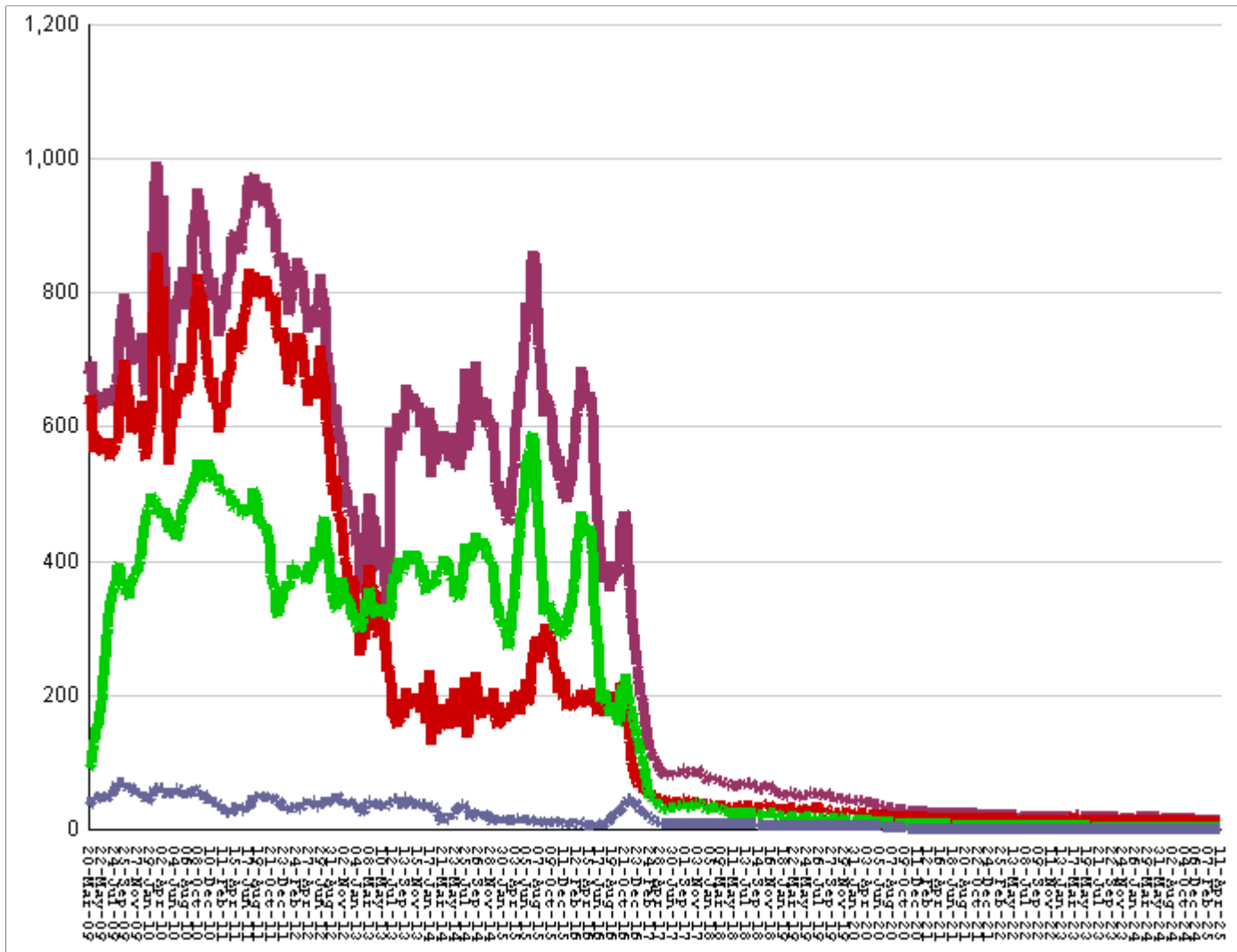
March 20, 2009 through April 11, 2025



All in bed + probs in jail + backlog	fall by	81	from	53,912	to	53,831
Probationers in jail	14	at	14
Inmate jail backlog	RISES BY	32	from	772	to	804
All in beds: inmate + Prob + parole	fall by	113	from	53,126	to	53,013
Total probationers in beds	fall by	2	from	2,971	to	2,969
Probation detention centers	RISE BY	8	from	1,488	to	1,496
Probation boot camps	fall by		from		to	
Probation RSAT	fall by	10	from	1483	to	1,473
Parole revocation centers	fall by		from		to	
All in inmate beds: state + other	fall by	111	from	50,155	to	50,044
Other inmate facilities :	fall by	15	from	15,108	to	15,093
Inmate boot camps	1	at	1
Private prisons	RISE BY	11	from	7984	to	7,995
County prisons	fall by	23	from	4524	to	4,501
Transitional centers	fall by	3	from	2599	to	2,596
In state prisons only	fall by	96	from	35,047	to	34,951

Probationers in jail awaiting placement in facilities

March 20, 2009 through April 11, 2025



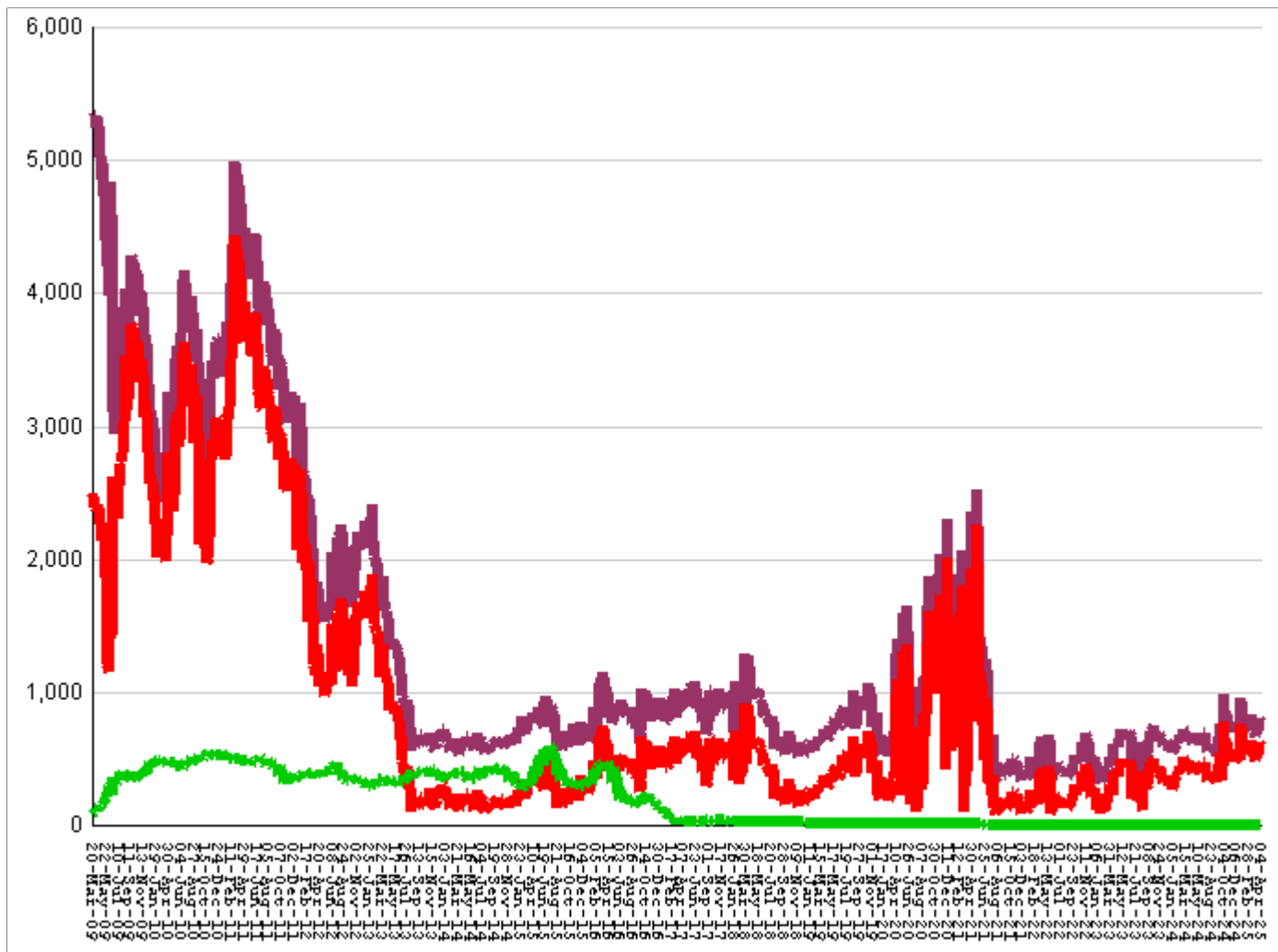
This graph shows, for each Friday since March 20 2009, the number of sentenced felony probationers who were waiting in jail for placement in facilities that GDC operates for housing probationers -- detention centers, probation residential substance abuse treatment (RSAT) centers, and probation boot camps. Counts include both those offenders sentenced directly from court, and those whose street probation was revoked.

Total probationers waiting in jail	level	at	14
... waiting for detention centers	level	at	11
... waiting for probation RSAT	level	at	2
... waiting for probation boot camps	level	at	1

The highest number of probationers waiting in jail was	994	on	05-MAR-10
... highest number waiting for detention centers was	859	on	05-MAR-10
... highest number waiting for probation RSAT was	592	on	10-JUL-15
... highest number waiting for probation boot camps was	70	on	18-SEP-09

State inmates in jail awaiting placement in facilities

March 20, 2009 through April 11, 2025



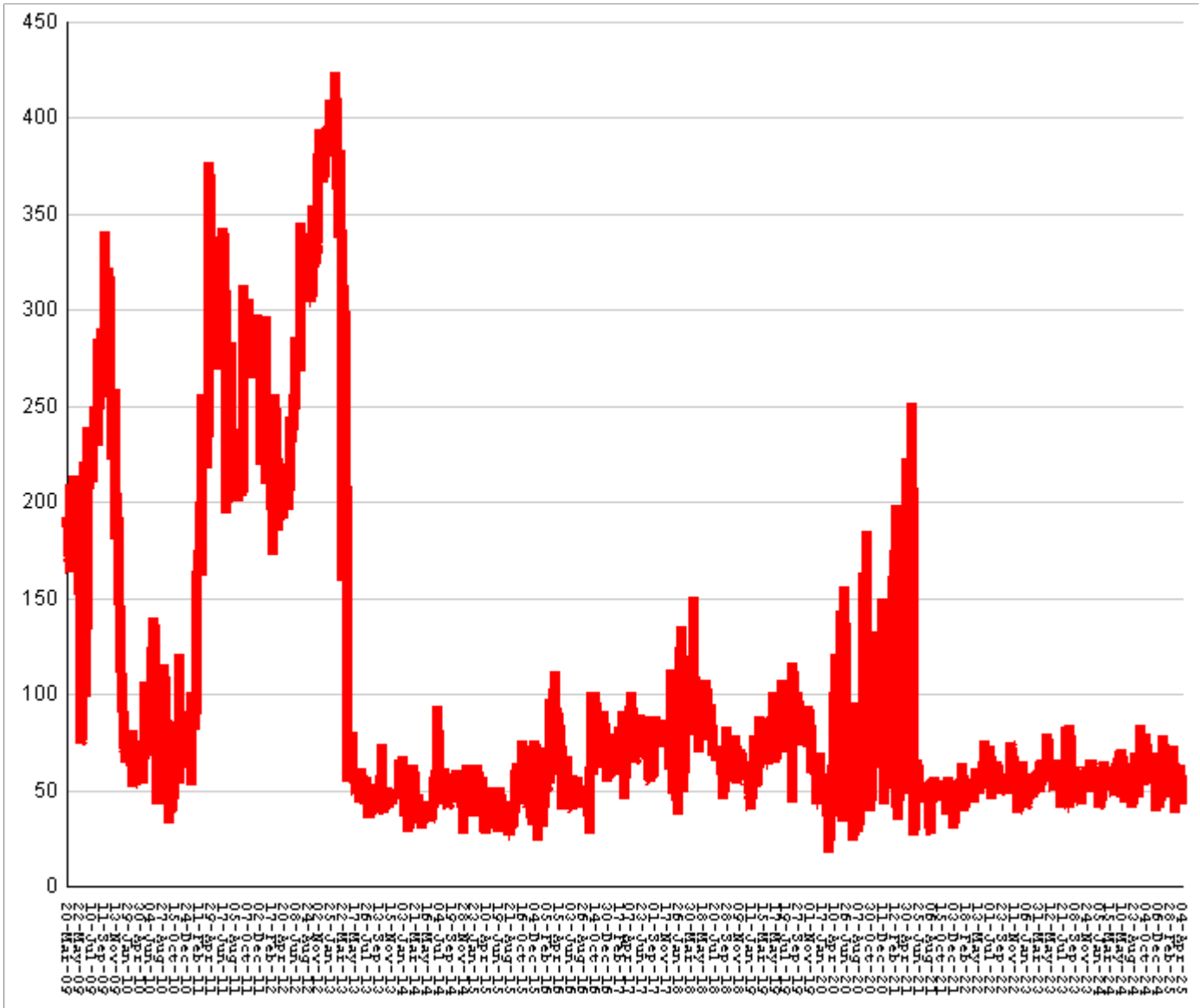
This graph shows, for each Friday since March 2009, the number of prisoners, probationers, and parolees in local jails who have been sentenced or revoked to state prison and whose documents have been received and verified by GDC. Most are almost immediately assigned to a diagnostic center, and are designated as in "admission processing". Of those a few hundred may be in the "transportation delayed" category because there is no room in the assigned diagnostic center, or because the inmate is being held for medical reasons, or for other court proceedings, or other reasons. Those remaining are "ready to be picked up".

Total state inmates waiting in jail	RISE BY	32	from	772	to	804
... not yet assigned to a diagnostic center	level	at	9
... total "in admission processing"	RISE BY	32	from	763	to	795
... with "transportation delayed"	fall by	2	from	171	to	169
... ready to be picked up	RISE BY	34	from	592	to	626

The highest number of state inmates waiting in jail was	5338	on	27-MAR-09
... highest number not asg to a diagnostic center was	2881	on	12-JUN-09
... highest number in admission processing was	4916	on	25-MAR-11
... highest number with transportation delayed was	645	on	14-JAN-11
... highest number ready to be pickup was	4435	on	25-MAR-11

Female state inmates in jail awaiting pickup

March 20, 2009 through April 11, 2025



This graph shows, for each Friday since March 2009, the number of female state prisoners in local jails who were assigned to diagnostic centers but had not yet been picked up.

Female state inmates in jails waiting picked up **RISE BY** **21** **from** **42** **to** **63**

The highest number of female inmates waiting in jail was **424** **on** **01-FEB-13**

The lowest number of female inmates waiting in jail was **17** **on** **20-MAR-20**

Summary of housed prisoners, parolees, and probationers

Week ending	Prison	Parole	Probation			Prison+parole+probation	Jail		Total
	Total inmates	Revocation centers	Prob RSAT	Boot camp	Detention		Inmate backlog	Probationers	Prison+parole+probation+jail
19-Apr-2024	49474		1455		1417	52346	692	18	53056
26-Apr-2024	49533		1477		1436	52446	639	18	53103
03-May-2024	49550		1512		1421	52483	660	18	53161
10-May-2024	49492		1504		1422	52418	643	18	53079
17-May-2024	49615		1451		1410	52476	645	18	53139
24-May-2024	49652		1443		1453	52548	688	18	53254
31-May-2024	49785		1467		1444	52696	612	18	53326
07-Jun-2024	49769		1491		1410	52670	608	17	53295
14-Jun-2024	49784		1492		1419	52695	631	17	53343
21-Jun-2024	49907		1472		1410	52789	643	17	53449
28-Jun-2024	49944		1476		1369	52789	687	17	53493
05-Jul-2024	49897		1493		1369	52759	690	16	53465
12-Jul-2024	50027		1472		1392	52891	549	17	53457
19-Jul-2024	50007		1496		1418	52921	588	17	53526
26-Jul-2024	49939		1433		1447	52819	631	17	53467
02-Aug-2024	49931		1424		1438	52793	598	17	53408
09-Aug-2024	49870		1418		1417	52705	526	17	53248
16-Aug-2024	49881		1429		1400	52710	609	17	53336
23-Aug-2024	49950		1453		1388	52791	598	17	53406
30-Aug-2024	50050		1466		1417	52933	598	17	53548
06-Sep-2024	49948		1452		1456	52856	549	17	53422
13-Sep-2024	49996		1457		1449	52902	535	17	53454
20-Sep-2024	50025		1467		1428	52920	660	17	53597
27-Sep-2024	49948		1515		1424	52887	755	17	53659
04-Oct-2024	49700		1465		1324	52489	989	17	53495
11-Oct-2024	49904		1490		1297	52691	857	16	53564
18-Oct-2024	49937		1494		1257	52688	769	16	53473
25-Oct-2024	49914		1461		1245	52620	766	16	53402
01-Nov-2024	49982		1487		1290	52759	760	16	53535
08-Nov-2024	49986		1504		1307	52797	724	15	53536
15-Nov-2024	50025		1480		1374	52879	710	15	53604
22-Nov-2024	50076		1484		1384	52944	710	15	53669
29-Nov-2024	50000		1511		1405	52916	751	15	53682
06-Dec-2024	50030		1493		1392	52915	688	14	53617
13-Dec-2024	50065		1466		1387	52918	711	14	53643
20-Dec-2024	50089		1505		1370	52964	692	14	53670
27-Dec-2024	50093		1487		1357	52937	702	14	53653
03-Jan-2025	50009		1474		1349	52832	794	14	53640
10-Jan-2025	49957		1478		1312	52747	778	14	53539
17-Jan-2025	50011		1456		1309	52776	752	14	53542
24-Jan-2025	49767		1407		1212	52386	957	14	53357
31-Jan-2025	49828		1453		1244	52525	862	14	53401
07-Feb-2025	49842		1474		1280	52596	828	14	53438
14-Feb-2025	49917		1494		1305	52716	746	14	53476
21-Feb-2025	49977		1475		1354	52806	778	14	53598
28-Feb-2025	50043		1464		1396	52903	718	14	53635
07-Mar-2025	50081		1449		1390	52920	679	14	53613
14-Mar-2025	50181		1476		1428	53085	664	14	53763
21-Mar-2025	50155		1474		1456	53085	703	14	53802
28-Mar-2025	50212		1477		1471	53160	775	14	53949
04-Apr-2025	50155		1483		1488	53126	772	14	53912
11-Apr-2025	50044		1473		1496	53013	804	14	53831

Offenders housed in facilities for state prisoners

Week ending	In state prisons	In facilities other than state prisons						Total Inmates
		Transition centers	County prisons	Pre-rel centers	Private prisons	Inmate boot camps	Total others	
19-Apr-2024	34957	2461	4467		7589	0	14517	49474
26-Apr-2024	35020	2512	4410		7591	0	14513	49533
03-May-2024	35061	2528	4395		7566	0	14489	49550
10-May-2024	35022	2558	4364		7548	0	14470	49492
17-May-2024	35118	2584	4358		7555	0	14497	49615
24-May-2024	35109	2638	4355		7550	0	14543	49652
31-May-2024	35123	2674	4440		7548	0	14662	49785
07-Jun-2024	35023	2682	4494		7570	0	14746	49769
14-Jun-2024	34995	2718	4500		7571	0	14789	49784
21-Jun-2024	35048	2737	4524		7598	0	14859	49907
28-Jun-2024	35076	2740	4540		7588	0	14868	49944
05-Jul-2024	35064	2729	4531		7573	0	14833	49897
12-Jul-2024	35172	2754	4521		7580	0	14855	50027
19-Jul-2024	35164	2754	4505		7584	0	14843	50007
26-Jul-2024	35139	2751	4478		7571	0	14800	49939
02-Aug-2024	35134	2752	4502		7543	0	14797	49931
09-Aug-2024	35109	2749	4482		7529	1	14761	49870
16-Aug-2024	35109	2747	4489		7535	1	14772	49881
23-Aug-2024	35149	2756	4507		7537	1	14801	49950
30-Aug-2024	35243	2761	4517		7528	1	14807	50050
06-Sep-2024	35195	2716	4508		7528	1	14753	49948
13-Sep-2024	35217	2752	4493		7533	1	14779	49996
20-Sep-2024	35238	2746	4506		7534	1	14787	50025
27-Sep-2024	35230	2724	4475		7518	1	14718	49948
04-Oct-2024	35111	2663	4437		7488	1	14589	49700
11-Oct-2024	35197	2679	4493		7534	1	14707	49904
18-Oct-2024	35211	2739	4469		7517	1	14726	49937
25-Oct-2024	35182	2745	4466		7520	1	14732	49914
01-Nov-2024	35239	2765	4442		7535	1	14743	49982
08-Nov-2024	35246	2756	4434		7549	1	14740	49986
15-Nov-2024	35323	2747	4403		7551	1	14702	50025
22-Nov-2024	35354	2755	4428		7538	1	14722	50076
29-Nov-2024	35292	2750	4431		7526	1	14708	50000
06-Dec-2024	35285	2756	4451		7537	1	14745	50030
13-Dec-2024	35339	2763	4429		7533	1	14726	50065
20-Dec-2024	35382	2755	4417		7534	1	14707	50089
27-Dec-2024	35380	2734	4433		7545	1	14713	50093
03-Jan-2025	35335	2721	4419		7533	1	14674	50009
10-Jan-2025	35311	2691	4428		7526	1	14646	49957
17-Jan-2025	35313	2677	4467		7553	1	14698	50011
24-Jan-2025	35190	2631	4416		7529	1	14577	49767
31-Jan-2025	35220	2660	4419		7528	1	14608	49828
07-Feb-2025	35212	2646	4438		7545	1	14630	49842
14-Feb-2025	35219	2641	4451		7605	1	14698	49917
21-Feb-2025	35197	2629	4488		7662	1	14780	49977
28-Feb-2025	35183	2622	4500		7737	1	14860	50043
07-Mar-2025	35161	2624	4515		7780	1	14920	50081
14-Mar-2025	35187	2617	4528		7848	1	14994	50181
21-Mar-2025	35144	2608	4487		7915	1	15011	50155
28-Mar-2025	35103	2612	4520		7976	1	15109	50212
04-Apr-2025	35047	2599	4524		7984	1	15108	50155
11-Apr-2025	34951	2596	4501		7995	1	15093	50044

Offenders waiting in local jails for state facilities

Week ending	Probationers waiting in jail				State prisoners waiting in jail					Assigned females
	.. for PDCs	.. for RSAT	.. for boot camps	Total	Total backlog	Not yet assigned	In adm process	Delayed transport	Ready for pickup	
19-Apr-2024	14	3	1	18	692	25	667	185	482	53
26-Apr-2024	14	3	1	18	639	26	613	189	424	58
03-May-2024	14	3	1	18	660	24	636	193	443	69
10-May-2024	14	3	1	18	643	23	620	193	427	71
17-May-2024	14	3	1	18	645	23	622	196	426	57
24-May-2024	14	3	1	18	688	24	664	191	473	67
31-May-2024	14	3	1	18	612	25	587	195	392	63
07-Jun-2024	13	3	1	17	608	25	583	193	390	57
14-Jun-2024	13	3	1	17	631	24	607	188	419	43
21-Jun-2024	13	3	1	17	643	24	619	187	432	58
28-Jun-2024	13	3	1	17	687	26	661	189	472	64
05-Jul-2024	12	3	1	16	690	27	663	193	470	50
12-Jul-2024	13	3	1	17	549	28	521	188	333	41
19-Jul-2024	13	3	1	17	588	28	560	180	380	50
26-Jul-2024	13	3	1	17	631	29	602	183	419	54
02-Aug-2024	13	3	1	17	598	27	571	181	390	59
09-Aug-2024	13	3	1	17	526	28	498	179	319	46
16-Aug-2024	13	3	1	17	609	24	585	184	401	69
23-Aug-2024	13	3	1	17	598	24	574	185	389	61
30-Aug-2024	13	3	1	17	598	25	573	186	387	63
06-Sep-2024	13	3	1	17	549	25	524	182	342	59
13-Sep-2024	13	3	1	17	535	25	510	183	327	56
20-Sep-2024	13	3	1	17	660	26	634	182	452	84
27-Sep-2024	13	3	1	17	755	27	728	184	544	52
04-Oct-2024	13	3	1	17	989	25	964	183	781	79
11-Oct-2024	12	3	1	16	857	26	831	185	646	69
18-Oct-2024	12	3	1	16	769	25	744	188	556	57
25-Oct-2024	12	3	1	16	766	26	740	192	548	57
01-Nov-2024	12	3	1	16	760	25	735	186	549	69
08-Nov-2024	12	2	1	15	724	25	699	189	510	53
15-Nov-2024	12	2	1	15	710	25	685	187	498	53
22-Nov-2024	12	2	1	15	710	24	686	190	496	39
29-Nov-2024	12	2	1	15	751	24	727	187	540	43
06-Dec-2024	11	2	1	14	688	24	664	188	476	48
13-Dec-2024	11	2	1	14	711	21	690	184	506	57
20-Dec-2024	11	2	1	14	692	22	670	180	490	54
27-Dec-2024	11	2	1	14	702	23	679	178	501	41
03-Jan-2025	11	2	1	14	794	22	772	179	593	47
10-Jan-2025	11	2	1	14	778	22	756	180	576	46
17-Jan-2025	11	2	1	14	752	22	730	182	548	53
24-Jan-2025	11	2	1	14	957	20	937	182	755	78
31-Jan-2025	11	2	1	14	862	21	841	184	657	60
07-Feb-2025	11	2	1	14	828	9	819	180	639	73
14-Feb-2025	11	2	1	14	746	8	738	180	558	68
21-Feb-2025	11	2	1	14	778	7	771	181	590	52
28-Feb-2025	11	2	1	14	718	6	712	180	532	58
07-Mar-2025	11	2	1	14	679	6	673	178	495	56
14-Mar-2025	11	2	1	14	664	6	658	175	483	56
21-Mar-2025	11	2	1	14	703	8	695	173	522	38
28-Mar-2025	11	2	1	14	775	9	766	173	593	55
04-Apr-2025	11	2	1	14	772	9	763	171	592	42
11-Apr-2025	11	2	1	14	804	9	795	169	626	63