

Friday Report – overview and contents

The pages in The Friday Report are about adult offenders in Georgia's prisons and jails. They contain statistical snapshots and trends in the populations and movements of offenders in the state prison system, on probation, on parole, and in local jails. Information comes from databases of the Georgia Department of Corrections (GDC) and the Board of Pardons and Paroles, and from data provided by local jailers. Information is summarized into tables in the GDC/Parole Data Warehouse, and is extracted into these pages each Friday. Pages are organized according to the table that supplied the data.

The Monthly Research Table, named "MO_RESRCH" or simply "MO", contains data about state prisoners, grouped into statistically interesting categories. The table contains one record per month, from January 2000 to the present. Despite its being "monthly", it is updated weekly, because some data trickles in for several weeks before it becomes stable history.	
Page	Contents
MO-01	Clemencies and maxouts. Monthly graph from 2000 to present shows the monthly departures from prison via actions by the Georgia Parole Board (clemencies), and via service of 100% of the court ordered sentence (maxouts)
MO-02	48 months of releases. Table shows counts and percentages of releases via clemencies and maxouts, with and without probation to follow, for each of the past 48 months.
MO-03	Methamphetamine. Monthly graph from 2000 to present shows admissions, departures, population, and percent of population of inmates with a current offense of methamphetamine possession, sale, manufacturing, or trafficking, and the changing racial composition of the methamphetamine population.
MO-04	Non-violent first incarcerants. Monthly graph from 2000 to present shows admissions, departures, population, and percent of population of inmates without violent or sex crimes, who are serving their first Georgia felony incarceration.
MO-05	Seven Deadly Sins. Monthly graph from 2000 to present shows admissions, departures, population, and percent of population of inmates convicted of kidnapping, armed robbery, rape, aggravated sodomy, aggravated sexual battery, and aggravated child molestation, for whom especially severe penalties are prescribed.
MO-06	48 months of inmate subpopulations. Table shows number and percentage of white and non-white inmates with methamphetamine offenses, and non-violent first incarcerants, and inmates convicted of the Seven Deadly Sins.
MO-07	Inmate age overview. Line graph shows the average age of the inmate population, by month from 2000 to the present. Pie chart shows the number of currently active inmates in their teens, twenties, thirties, forties, fifties, and age sixty+.
MO-08	Counts by age group. Graphs show the count, by month from 2000 to the present, of inmates in their teens, twenties, thirties, forties, fifties, and age sixty+.
MO-09	Percentages by age group. Graphs show the <i>percentages</i> , by month from 2000 to the present, of inmates in their teens, twenties, thirties, forties, fifties, and age sixty+.
MO-10	48 months of inmate ages. Table shows average age of the standing population, and counts and percentages of teens, twenties, thirties, forties, fifties, and sixty+, for each of the past 48 months.

Friday Report – overview and contents (*continued*)

The MSR Table is based on the Management Summary Report (MSR), a snapshot report posted each week in GDC's Scribe database. MSR_RESRCH gathers that data into weekly trends, with one record for each Friday since March 20th, 2009.	
Page	Contents
MSR-01	All housed offenders. Weekly graph from March 20, 2009 to present, showing counts of inmates in state prisons, transitional centers, county prisons, private prisons, inmate boot camps, parole revocation centers, probation Residential Substance Abuse Treatment (RSAT), probation boot camps, probation detention centers, plus the inmate jail backlog and probationers in jail waiting for state facilities.
MSR-02	Probationers in jail. Weekly graph from March 20, 2009 to present, showing counts of probationers in local jails awaiting placement in probation detention centers, probation RSAT centers, and probation boot camps.
MSR-03	State inmates in jail. Weekly graph from March 20, 2009 to present, showing counts of state inmates in local jails awaiting placement in state prison facilities – including those who have not yet been assigned to a diagnostic center, those whose transportation has been delayed for some reason, and those who are ready to be picked up.
MSR-04	Female state inmates in jail. Weekly graph from March 20, 2009 to present, showing counts of female state inmates awaiting placement in a state prison for females.
MSR-05	52-week table: housed offenders. Data for each of the past 52 weeks, showing total prison inmates, parolees in revocation centers, probationers in RSAT/boot camp/detention centers, inmate jail backlog, probationers in jail waiting for facilities, with subtotals.
MSR-06	52-week table: state prisoners. Data for each of the past 52 weeks, showing inmates in state prisons, transition centers, county prisons, pre-release centers, private prisons, and inmate boot camps, with subtotals.
MSR-07	52-week table: waiting in jail. Data for each of the past 52 weeks, showing probationers waiting for detention centers, RSAT, and boot camp; and state prisoners not yet assigned to diagnostic centers, in admission process, with delayed transport, and ready for pickup, with subtotals.

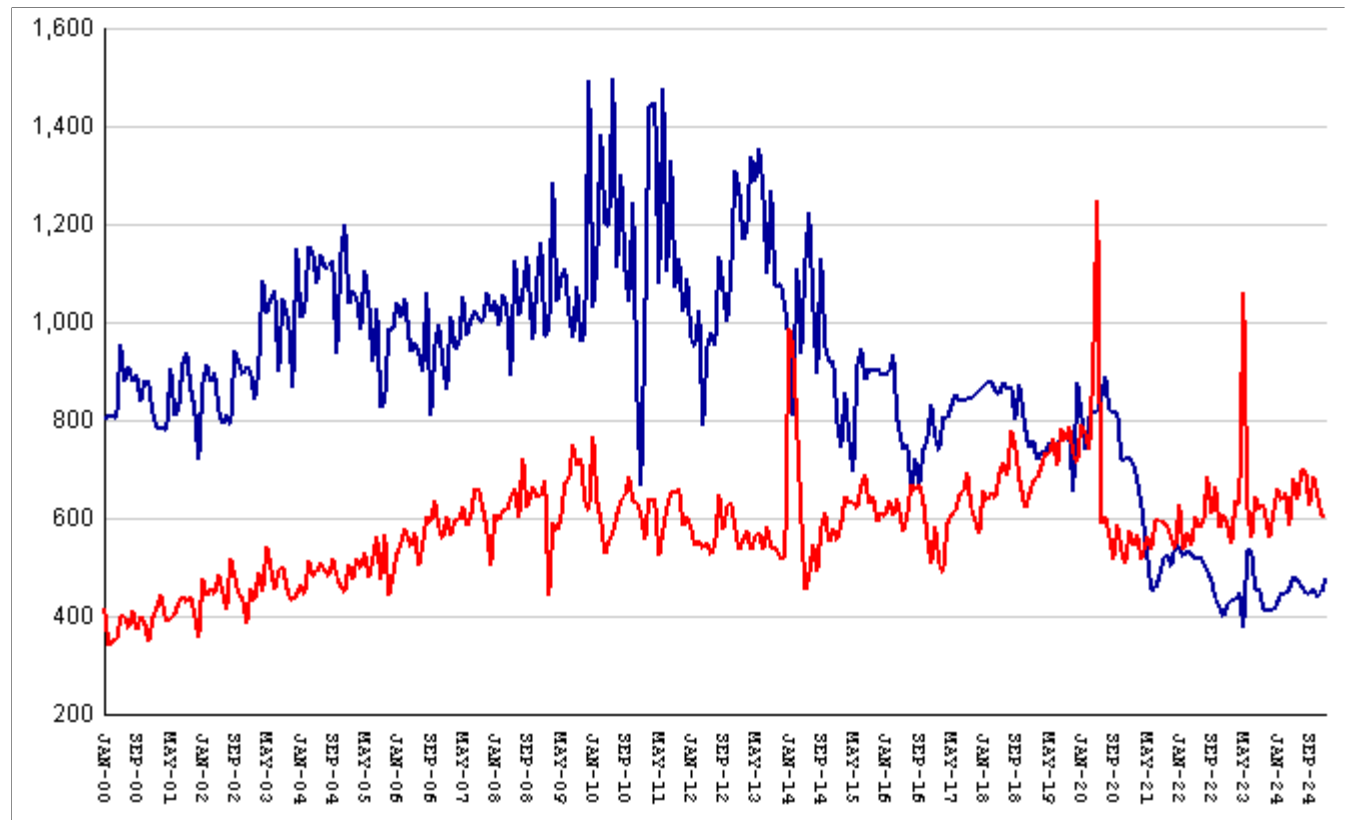
The DCA table consists mainly of data submitted from each of Georgia's 140+ local jails, via the Georgia Crime Information Center (GCIC) to the Georgia Department of Community Affairs (DCA), which publishes its [County Jail Inmate Population Report](#) on its web site each month. GDC has collected summary statewide data from this report every month since its inception in January, 1993. The table also contains the inmate jail backlog as computed by GDC for the last Friday of each month, for comparison with the jailers' count of state inmates. Although nominally a monthly table, DCA_RESRCH is updated weekly to insure that the DCA data is correctly synchronized with the GDC jail backlog data.

Page	Contents
DCA-01	Jail composition. Monthly graph from 1993 to the present shows trends in the numbers of unsentenced inmates, state inmates, county inmates, and other inmates.
DCA-02	Two views of jail backlog. Monthly graph from 1993 to present compares jailers' count of "state inmates" with GDC's count of the "inmate jail backlog", and explains that both are valid counts of different phenomena.
DCA-03	48-month table: local jails. Data from Georgia jailers for each of the past 48 months, showing total jail population, capacity, utilization, and number and percent of unsentenced inmates, state inmates, county inmates, and other inmates.

Releases by clemency and maxout, Jan-2000 to Jan-2025

There are two main ways of being released from a Georgia prison -- by actions of the Board of Pardons and Paroles ("Clemencies") and by service of 100% of the court-ordered sentences ("Maxouts"). "Clemency" includes paroles, reprieves, commutations, and transfer to other confinement prior to expiration of sentence.

"Other Releases" includes deaths, and sentences modified or overturned by the courts. Clemencies and maxouts may or may not be followed by periods of probation.



A. Clemency with probation to follow	RISES BY	29	from	389	to	418
B. Clemency only	level	at	60
C. Maxout with probation to follow	RISES BY	5	from	557	to	562
D. Maxout only (unsupervised)	RISES BY	1	from	47	to	48
E. Other releases	falls by	3	from	33	to	30
F. Total releases (A+B+C+D+E)	RISES BY	32	from	1086	to	1118
G. Total clemencies (A+B) (top line)	RISES BY	29	from	449	to	478
H. Total maxouts(C+D) (bottom line)	RISES BY	6	from	604	to	610
I. % of releases by clemency (G/F)	RISES BY	1.41%	from	41.34%	to	42.75%
J. % of releases by maxout (H/F)	falls by	1.06%	from	55.62%	to	54.56%
K. Supervised releases (A+B+C)	RISES BY	34	from	1006	to	1040
L. % unsupervised releases (D/F)	falls by	.04%	from	4.33%	to	4.29%
M. % supervised releases (K/F)	RISES BY	.39%	from	92.63%	to	93.02%

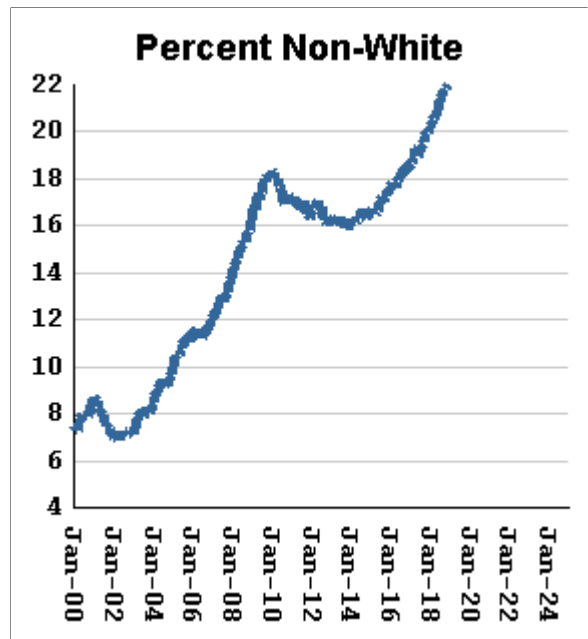
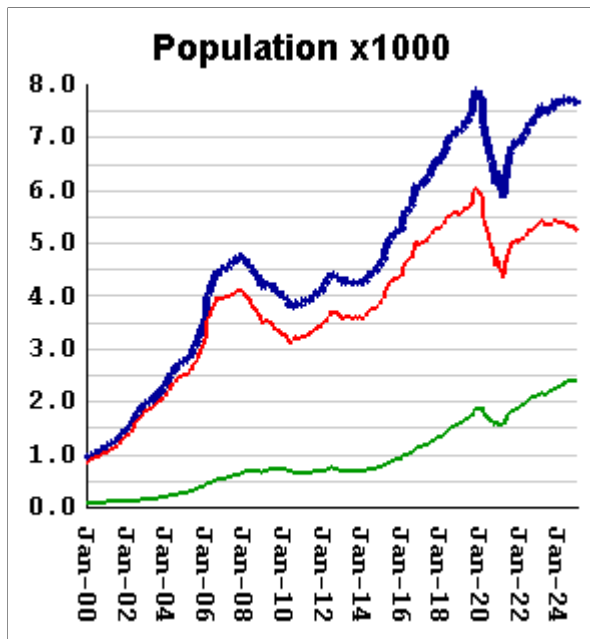
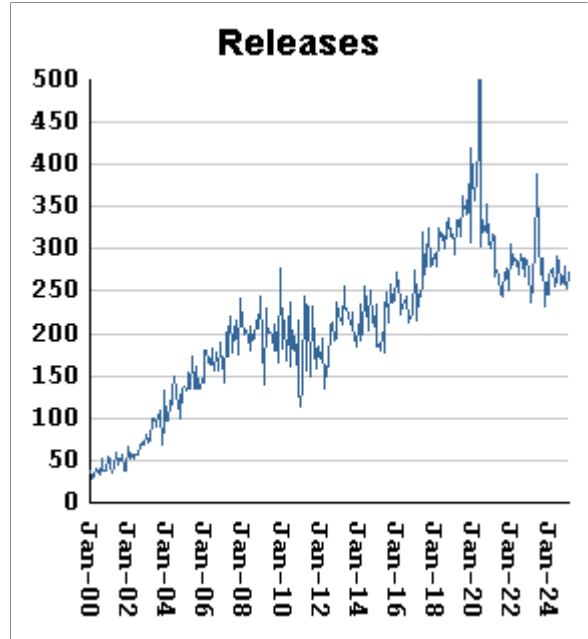
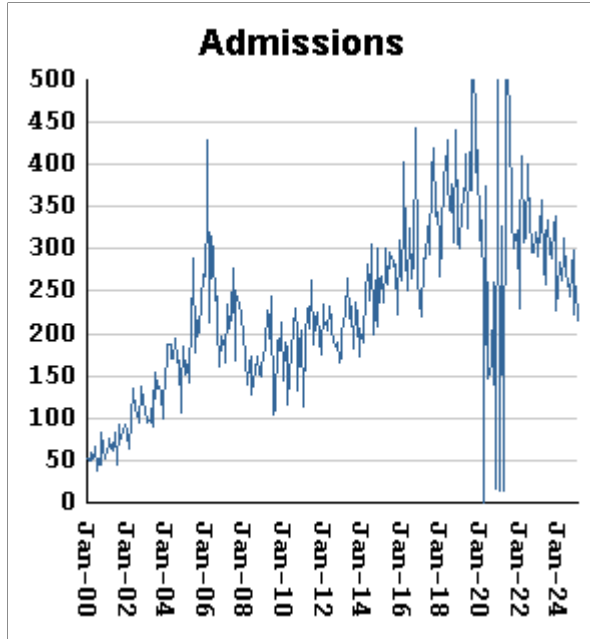
Monthly releases from prison by type of release, for the past 48 months

Month	A	B	C	D	E	F	G	H	I	J
	Clemency + Prob	Clemency Only	Maxout + Prob	Maxout Only	Other Rels	Total Releases (A+B+C+D+E)	Total Clemency (A+B)	Total Maxout (C+D)	Percent Clemency (G/F)	Percent Maxout (H/F)
Feb-21	615	97	481	62	20	1275	712	543	55.84%	42.59%
Mar-21	568	108	496	70	16	1258	676	566	53.74%	44.99%
Apr-21	532	97	454	61	24	1168	629	515	53.85%	44.09%
May-21	444	79	509	53	21	1106	523	562	47.29%	50.81%
Jun-21	367	85	468	67	21	1008	452	535	44.84%	53.08%
Jul-21	391	66	534	63	19	1073	457	597	42.59%	55.64%
Aug-21	410	71	531	64	28	1104	481	595	43.57%	53.89%
Sep-21	440	79	522	68	32	1141	519	590	45.49%	51.71%
Oct-21	447	78	526	56	21	1128	525	582	46.54%	51.60%
Nov-21	425	79	494	64	18	1080	504	558	46.67%	51.67%
Dec-21	468	83	483	56	18	1108	551	539	49.73%	48.65%
Jan-22	459	80	551	76	26	1192	539	627	45.22%	52.60%
Feb-22	443	81	465	71	24	1084	524	536	48.34%	49.45%
Mar-22	460	73	515	56	16	1120	533	571	47.59%	50.98%
Apr-22	456	72	471	70	16	1085	528	541	48.66%	49.86%
May-22	440	78	541	63	26	1148	518	604	45.12%	52.61%
Jun-22	459	62	527	58	21	1127	521	585	46.23%	51.91%
Jul-22	442	68	529	60	14	1113	510	589	45.82%	52.92%
Aug-22	426	66	618	66	21	1197	492	684	41.10%	57.14%
Sep-22	396	79	550	58	18	1101	475	608	43.14%	55.22%
Oct-22	374	61	606	60	23	1124	435	666	38.70%	59.25%
Nov-22	367	53	524	54	19	1017	420	578	41.30%	56.83%
Dec-22	344	58	550	59	28	1039	402	609	38.69%	58.61%
Jan-23	375	51	527	59	23	1035	426	586	41.16%	56.62%
Feb-23	388	46	495	51	17	997	434	546	43.53%	54.76%
Mar-23	376	56	573	63	24	1092	432	636	39.56%	58.24%
Apr-23	390	57	574	53	26	1100	447	627	40.64%	57.00%
May-23	328	46	932	129	20	1455	374	1061	25.70%	72.92%
Jun-23	462	71	567	59	19	1178	533	626	45.25%	53.14%
Jul-23	461	73	515	44	25	1118	534	559	47.76%	50.00%
Aug-23	402	52	593	51	22	1120	454	644	40.54%	57.50%
Sep-23	406	53	578	42	10	1089	459	620	42.15%	56.93%
Oct-23	364	50	577	52	31	1074	414	629	38.55%	58.57%
Nov-23	356	55	495	63	19	988	411	558	41.60%	56.48%
Dec-23	366	47	555	57	21	1046	413	612	39.48%	58.51%
Jan-24	368	61	600	61	32	1122	429	661	38.24%	58.91%
Feb-24	395	52	578	59	24	1108	447	637	40.34%	57.49%
Mar-24	380	63	589	64	20	1116	443	653	39.70%	58.51%
Apr-24	412	45	528	57	33	1075	457	585	42.51%	54.42%
May-24	425	57	612	71	26	1191	482	683	40.47%	57.35%
Jun-24	409	64	577	59	23	1132	473	636	41.78%	56.18%
Jul-24	400	60	633	65	38	1196	460	698	38.46%	58.36%
Aug-24	382	67	641	57	19	1166	449	698	38.51%	59.86%
Sep-24	380	64	560	66	34	1104	444	626	40.22%	56.70%
Oct-24	401	58	630	57	28	1174	459	687	39.10%	58.52%
Nov-24	390	52	592	55	23	1112	442	647	39.75%	58.18%
Dec-24	389	60	557	47	33	1086	449	604	41.34%	55.62%
Jan-25	418	60	562	48	30	1118	478	610	42.75%	54.56%

Inmates with meth crimes, by month, Jan-2000 to Jan-2025

Methamphetamine is one of the most addictive drugs ever known. At first it induces intense euphoria, but with continued use causes severe depression and physical deterioration, including the dental catastrophe known as "meth mouth".

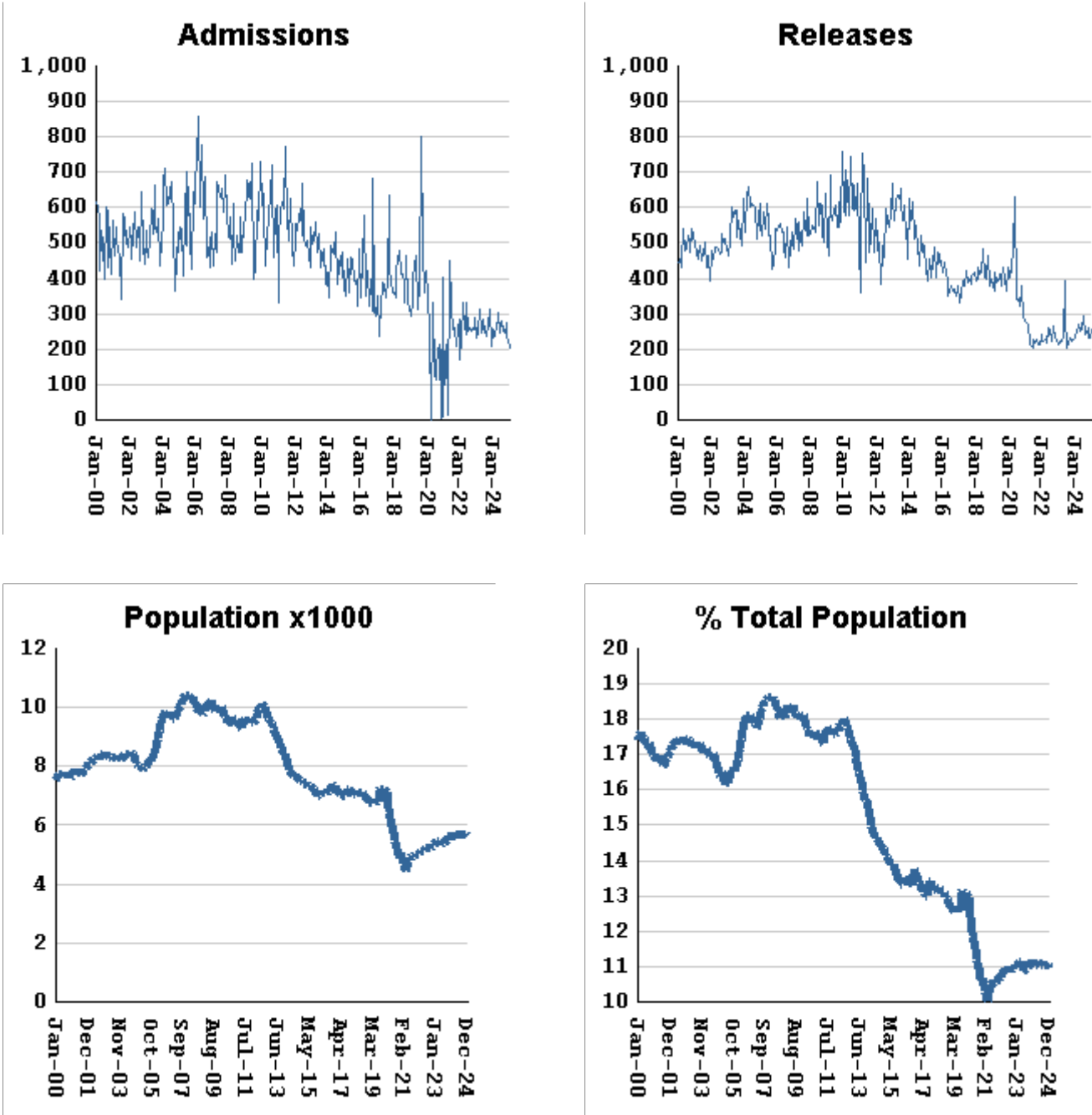
Georgia's meth epidemic peaked in 2007-2008, then declined, but is again growing. It started in the predominantly white northern counties, with blacks accounting for only about 5% of convictions. But black usage has expanded, and now accounts for about 15% of convictions.



Methamphetamine admissions	fall by	42	from	257	to	215
Methamphetamine releases	RISE BY	19	from	253	to	272
Methamphetamine population	falls by	57	from	7688	to	7631
Meth white population	falls by	45	from	5285	to	5240
Meth non-white population	falls by	12	from	2403	to	2391
Percent meth inmates who are non-white	RISES BY	.07 %	from	31.26%	to	31.33%

Non-violent first-incarcerants, by month, Jan-2000 to Jan-2025

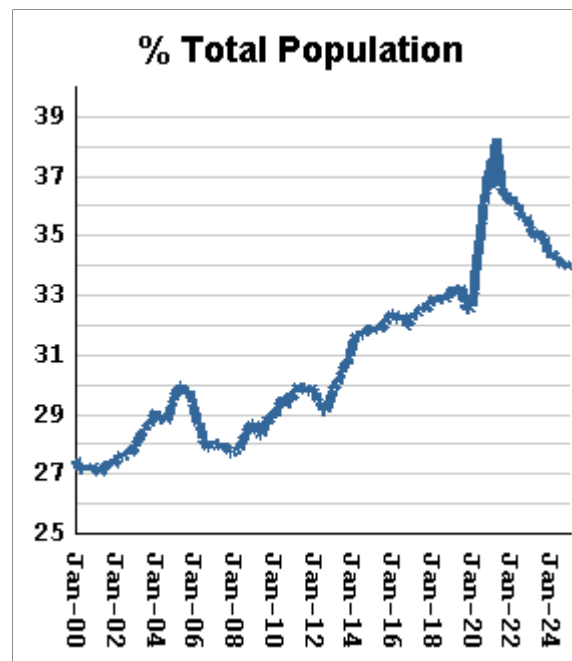
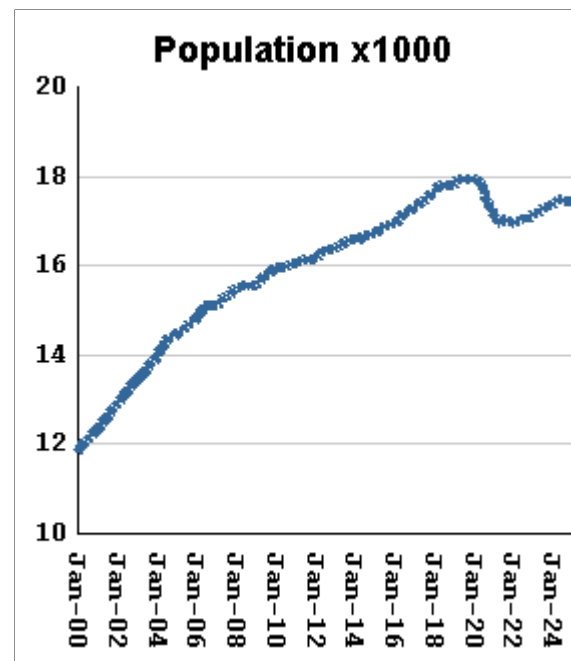
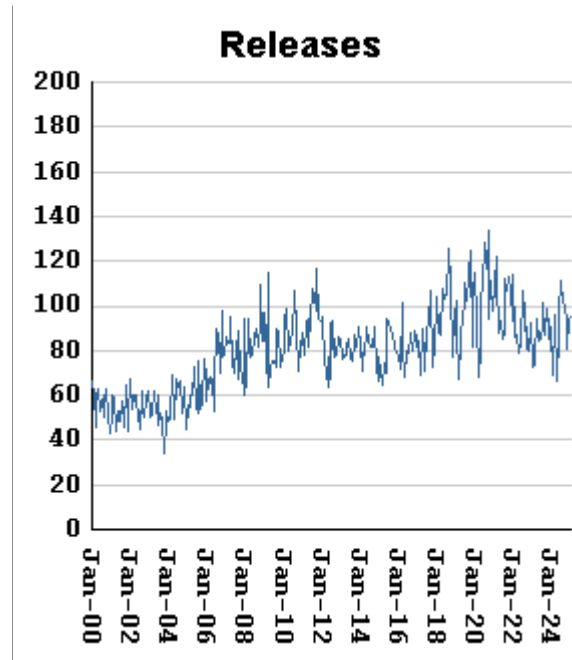
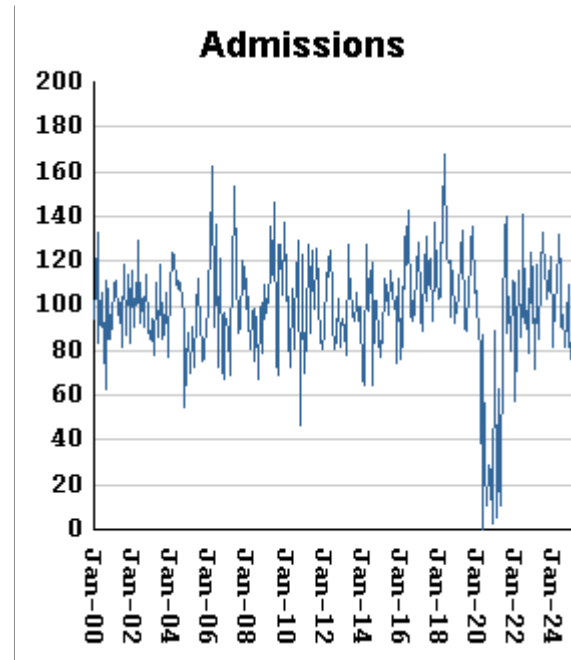
Historically, about one in six Georgia prison inmates has been a first-time incarcerant with a non-violent crime. In 2012 Georgia passed HB1176, which aimed to curb the growth of prison population by steering the least dangerous, least hardened offenders away from prison through pre-trial intervention, diversion, drug courts and treatment programs, and raising the dollar thresholds that define property felonies. The expectation is that over time, these measures will reduce the percentage of first-time non-violent incarcerants in prison.



Non-viol/1st-Incar admissions	fall by	19	from	224	to	205
Non-viol/1st-Incar releases	RISE BY	24	from	234	to	258
Non-viol/1st-Incar population	falls by	53	from	5668	to	5615
Non-viol/1st-Incar % of total population	falls by	.08 %	from	11.03%	to	10.95%

"Seven Deadly Sins" by month, Jan-2000 to Jan-2025

Tough legislation in 1995 imposed mandatory ten-year minimum terms for kidnapping, armed robbery, rape, aggravated sodomy, aggravated sexual battery, and aggravated child molestation, and a minimum of 25 years for murder. A second conviction resulted in life without parole. As predicted, longer prison terms caused population to climb steeply for about a decade. It then began to level off, as releases started catching up with admissions. The 2008 dip in percentage of total population (bottom right) was caused by the surge of methamphetamine convictions (Page MO-03). Note: these graphs include inmates convicted before 1995.



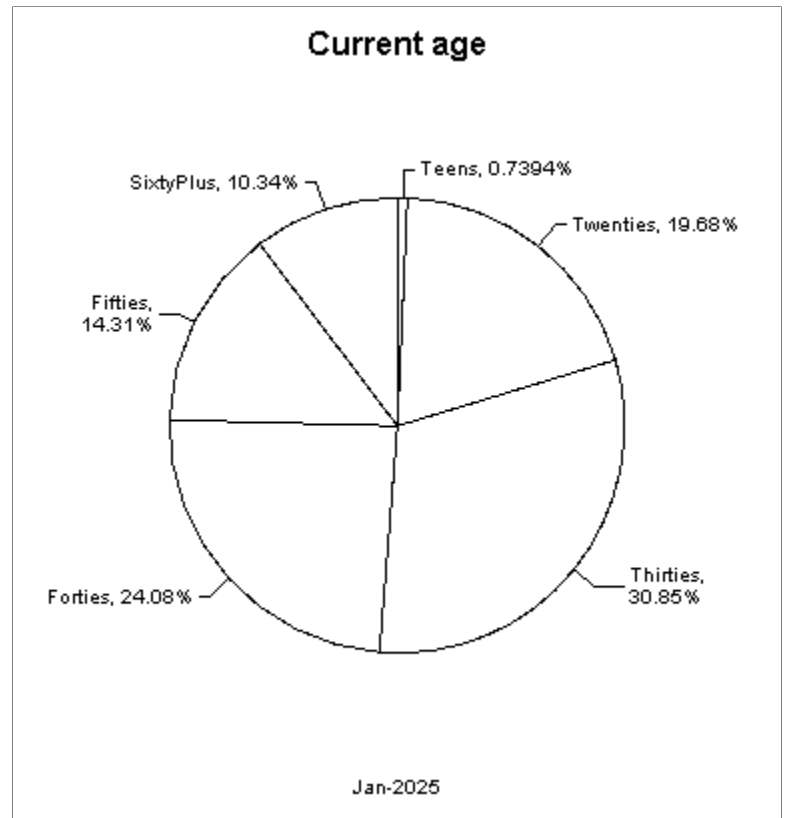
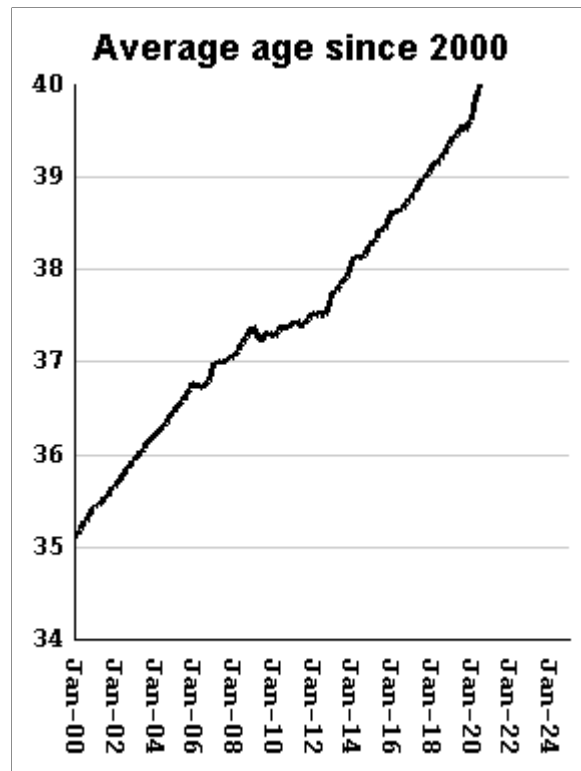
"Seven Deadly Sin" admissions	fall by	15	from	83	to	68
"Seven Deadly Sin" releases	RISE BY	1	from	94	to	95
"Seven Deadly Sin" population	falls by	27	from	17452	to	17425
"Seven Deadly Sin" % of total population	RISES BY	.04 %	from	33.95%	to	33.99%

Inmate subpopulation counts and percentages, for the past 48 months

Month	Methamphetamine						1st Incar Non-Violent		Seven Deadly Sins	
	Total Number	Total Percent	White Number	White Percent	Non White Number	Non White Percent	Number	Percent	Number	Percent
Feb-21	6044	13.30%	4523	74.83%	1578	26.11%	4680	10.30%	17078	37.58%
Mar-21	6105	13.45%	4510	73.87%	1602	26.24%	4625	10.19%	17029	37.51%
Apr-21	5844	13.18%	4309	73.73%	1542	26.39%	4424	9.98%	16952	38.23%
May-21	6187	13.70%	4610	74.51%	1647	26.62%	4664	10.33%	16951	37.54%
Jun-21	6451	14.05%	4757	73.74%	1734	26.88%	4783	10.42%	17000	37.03%
Jul-21	6670	14.34%	4894	73.37%	1783	26.73%	4867	10.47%	17051	36.67%
Aug-21	6746	14.46%	4949	73.36%	1813	26.88%	4903	10.51%	17027	36.50%
Sep-21	6813	14.57%	4988	73.21%	1832	26.89%	4937	10.56%	17024	36.40%
Oct-21	6837	14.61%	5006	73.22%	1838	26.88%	4934	10.54%	16991	36.31%
Nov-21	6902	14.71%	5058	73.28%	1860	26.95%	4988	10.63%	16996	36.23%
Dec-21	6920	14.71%	5064	73.18%	1863	26.92%	5030	10.69%	17013	36.16%
Jan-22	6845	14.66%	5017	73.29%	1863	27.22%	4976	10.66%	16956	36.32%
Feb-22	6873	14.71%	5042	73.36%	1889	27.48%	4993	10.69%	16954	36.28%
Mar-22	6994	14.85%	5075	72.56%	1926	27.54%	5098	10.82%	16983	36.05%
Apr-22	7017	14.87%	5090	72.54%	1934	27.56%	5139	10.89%	16990	36.01%
May-22	7060	14.94%	5117	72.48%	1967	27.86%	5120	10.84%	17009	36.00%
Jun-22	7182	15.06%	5189	72.25%	2002	27.88%	5211	10.93%	17067	35.80%
Jul-22	7211	15.09%	5197	72.07%	2021	28.03%	5205	10.89%	17053	35.68%
Aug-22	7267	15.20%	5253	72.29%	2044	28.13%	5240	10.96%	17047	35.65%
Sep-22	7297	15.23%	5234	71.73%	2069	28.35%	5227	10.91%	17074	35.64%
Oct-22	7304	15.24%	5260	72.02%	2075	28.41%	5255	10.97%	17062	35.61%
Nov-22	7339	15.22%	5309	72.34%	2073	28.25%	5283	10.96%	17106	35.49%
Dec-22	7372	15.19%	5304	71.95%	2074	28.13%	5347	11.02%	17126	35.30%
Jan-23	7427	15.27%	5336	71.85%	2111	28.42%	5364	11.03%	17125	35.21%
Feb-23	7491	15.34%	5371	71.70%	2140	28.57%	5393	11.04%	17169	35.16%
Mar-23	7570	15.40%	5421	71.61%	2155	28.47%	5481	11.15%	17189	34.97%
Apr-23	7564	15.39%	5426	71.73%	2144	28.34%	5484	11.16%	17180	34.95%
May-23	7435	15.19%	5335	71.76%	2130	28.65%	5352	10.93%	17212	35.16%
Jun-23	7440	15.12%	5309	71.36%	2137	28.72%	5341	10.85%	17260	35.07%
Jul-23	7503	15.20%	5368	71.54%	2176	29.00%	5392	10.92%	17281	35.00%
Aug-23	7520	15.21%	5335	70.94%	2190	29.12%	5410	10.94%	17299	34.98%
Sep-23	7520	15.16%	5332	70.90%	2192	29.15%	5444	10.97%	17315	34.90%
Oct-23	7617	15.25%	5400	70.89%	2230	29.28%	5534	11.08%	17326	34.69%
Nov-23	7697	15.27%	5446	70.75%	2255	29.30%	5623	11.15%	17358	34.43%
Dec-23	7677	15.22%	5431	70.74%	2250	29.31%	5604	11.11%	17366	34.43%
Jan-24	7663	15.18%	5419	70.72%	2271	29.64%	5621	11.14%	17357	34.39%
Feb-24	7672	15.18%	5401	70.40%	2274	29.64%	5605	11.09%	17393	34.40%
Mar-24	7657	15.10%	5367	70.09%	2293	29.95%	5611	11.06%	17403	34.32%
Apr-24	7695	15.09%	5376	69.86%	2333	30.32%	5635	11.05%	17469	34.25%
May-24	7742	15.12%	5383	69.53%	2362	30.51%	5690	11.12%	17492	34.17%
Jun-24	7720	15.07%	5366	69.51%	2357	30.53%	5674	11.07%	17484	34.12%
Jul-24	7700	15.02%	5338	69.32%	2386	30.99%	5660	11.04%	17469	34.08%
Aug-24	7686	14.99%	5308	69.06%	2380	30.97%	5670	11.06%	17450	34.03%
Sep-24	7702	15.04%	5309	68.93%	2394	31.08%	5670	11.07%	17445	34.06%
Oct-24	7721	15.02%	5328	69.01%	2393	30.99%	5682	11.05%	17462	33.97%
Nov-24	7684	14.96%	5292	68.87%	2392	31.13%	5678	11.06%	17463	34.00%
Dec-24	7688	14.96%	5285	68.74%	2403	31.26%	5668	11.03%	17452	33.95%
Jan-25	7631	14.89%	5240	68.67%	2391	31.33%	5615	10.95%	17425	33.99%

Overview of inmate age statistics, Jan-2000 to Jan-2025

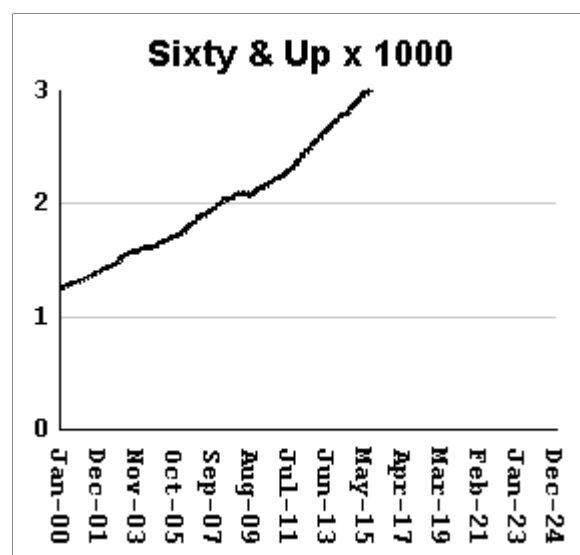
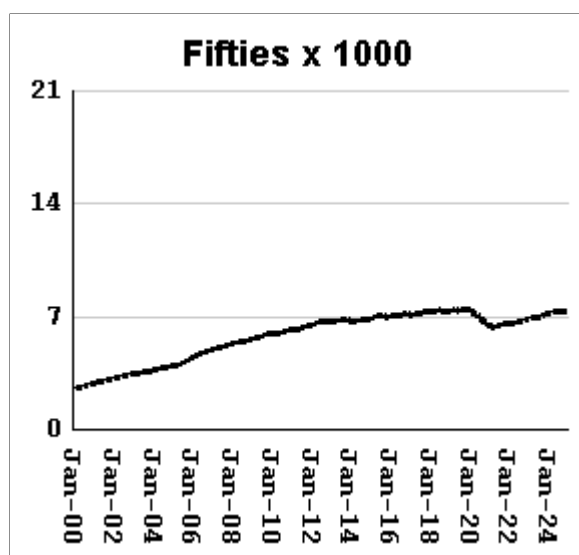
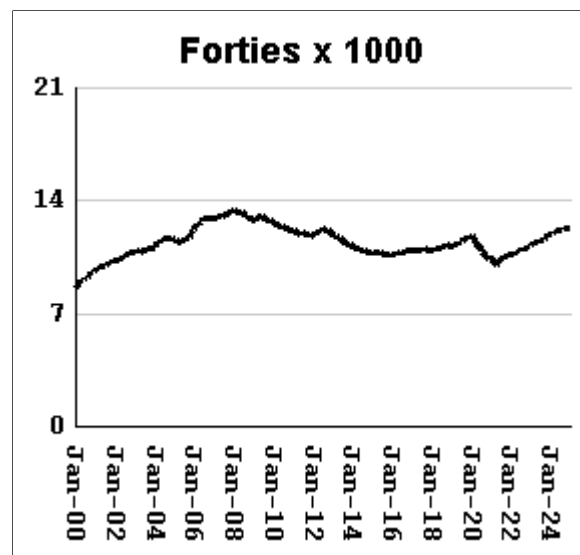
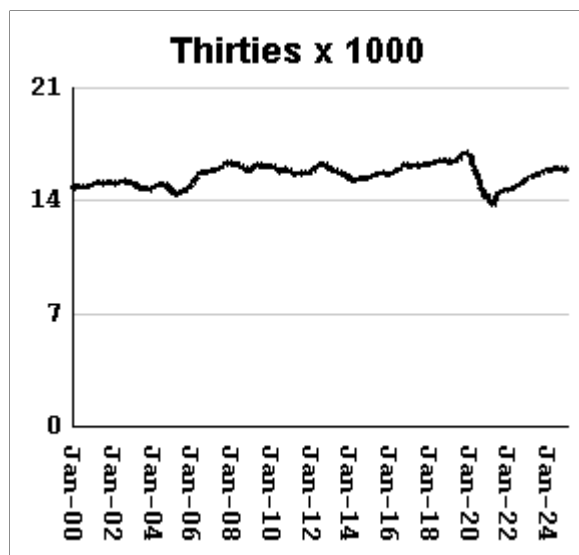
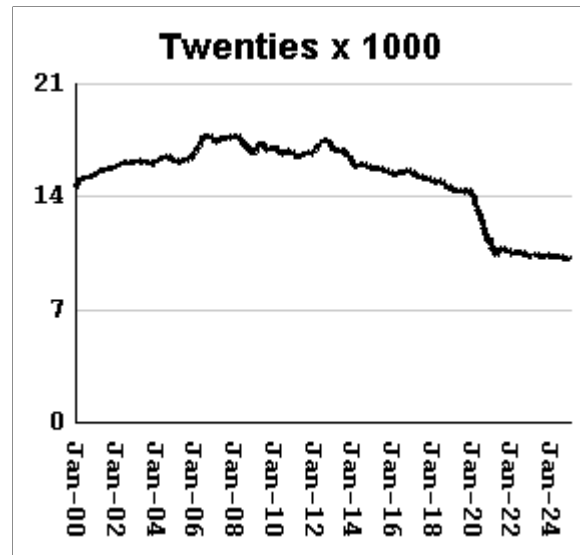
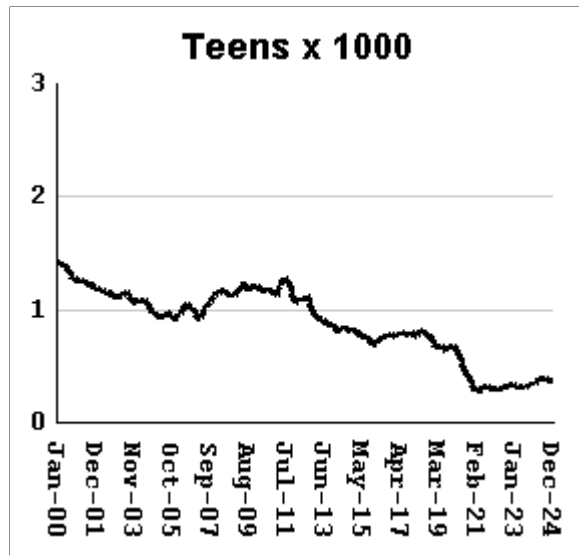
The "aging inmate population" is a concern in correctional systems throughout America, including Georgia. Here, the increase in inmate age is the result of several factors. Teenagers have been steered away from prison by increased usage of probation and other alternatives, at least for their first convictions. And there has been a surge of middle-aged male sex offenders due to the expanding "It's OK to tell" ethos. But most importantly, more severe sentence lengths and release policies have greatly increased the length of time that most offenders -- especially violent ones -- spend in prison, thereby increasing their average age.



Average age of active inmates	RISES BY	.04	from	41.76	to	41.8
Number in their teens	RISES BY	4	from	375	to	379
Percentage in their teens	RISES BY	.01%	from	.73%	to	0.74%
Number in their twenties	falls by	54	from	10,144	to	10,090
Percentage in their twenties	falls by	0.05%	from	19.73%	to	19.68%
Number in their thirties	falls by	133	from	15,945	to	15,812
Percentage in their thirties	falls by	0.17%	from	31.02%	to	30.85%
Number in their forties	RISES BY	14	from	12,329	to	12,343
Percentage in their forties	RISES BY	0.09%	from	23.99%	to	24.08%
Number in their fifties	RISES BY	10	from	7325	to	7,335
Percentage in their fifties	RISES BY	0.06%	from	14.25%	to	14.31%
Number age sixty and up	RISES BY	19	from	5282	to	5,301
Percentage age sixty and up	RISES BY	.06%	from	10.28%	to	10.34%

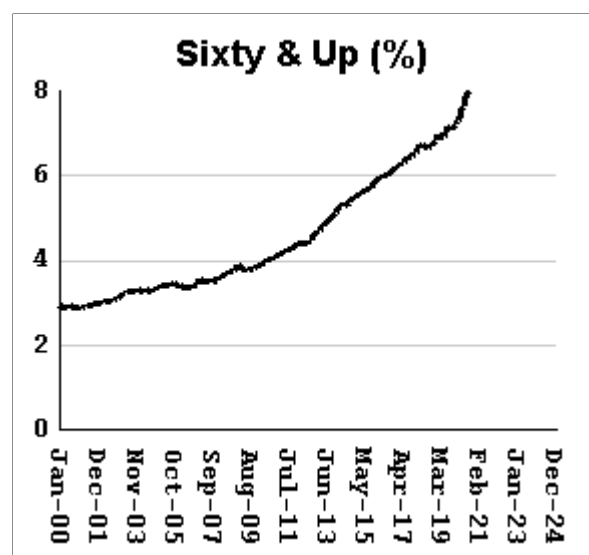
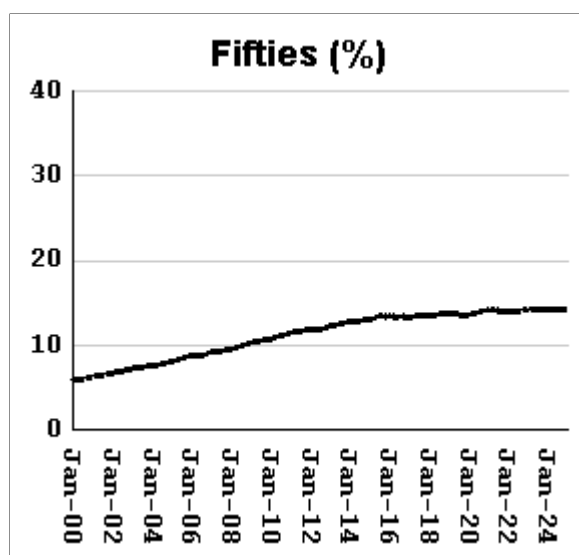
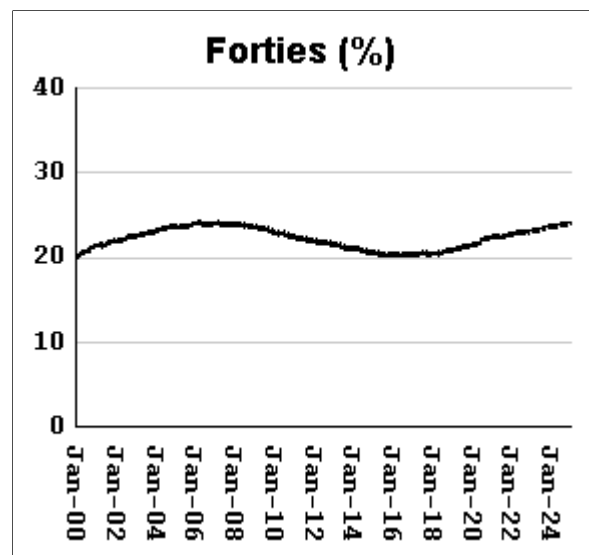
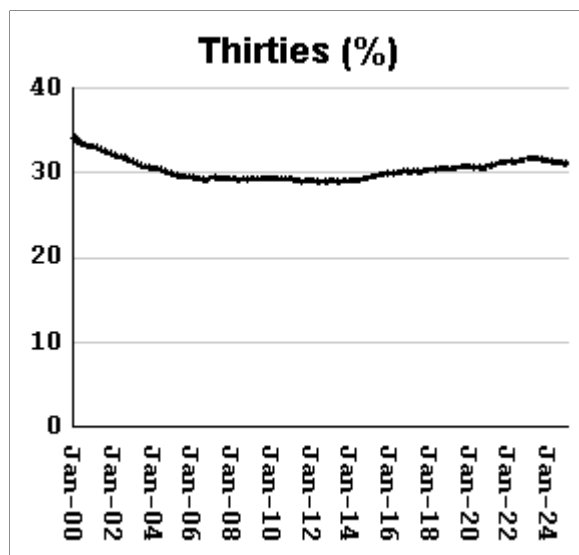
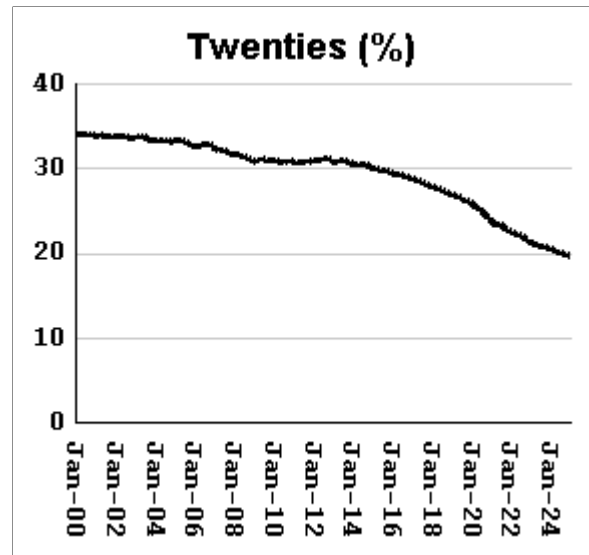
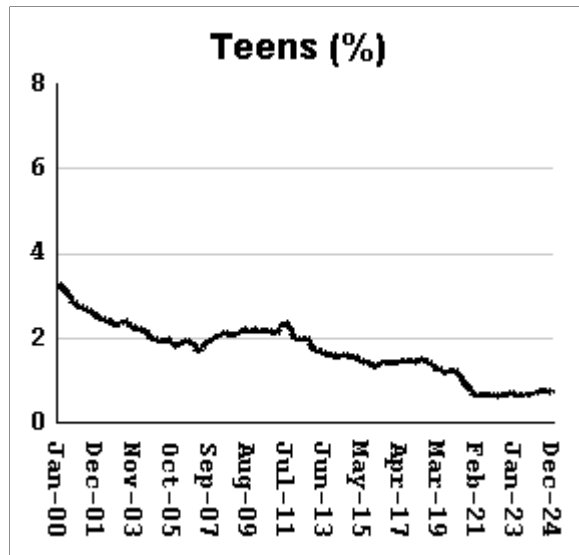
Monthly counts of inmates by age group, Jan-2000 to Jan-2025

Y-axis of Twenties/Thirties/Forties/Fifties runs from 0 to 21,000. Y-axis of Teens/Sixty+ runs from 0 to 3,000.



Monthly percentages of inmates by age group, Jan-2000 to Jan-2025

Y-axis of Twenties/Thirties/Forties/Fifties runs from 0% to 40%. Y-axis of Teens/Sixty+ runs from 0% to 8%

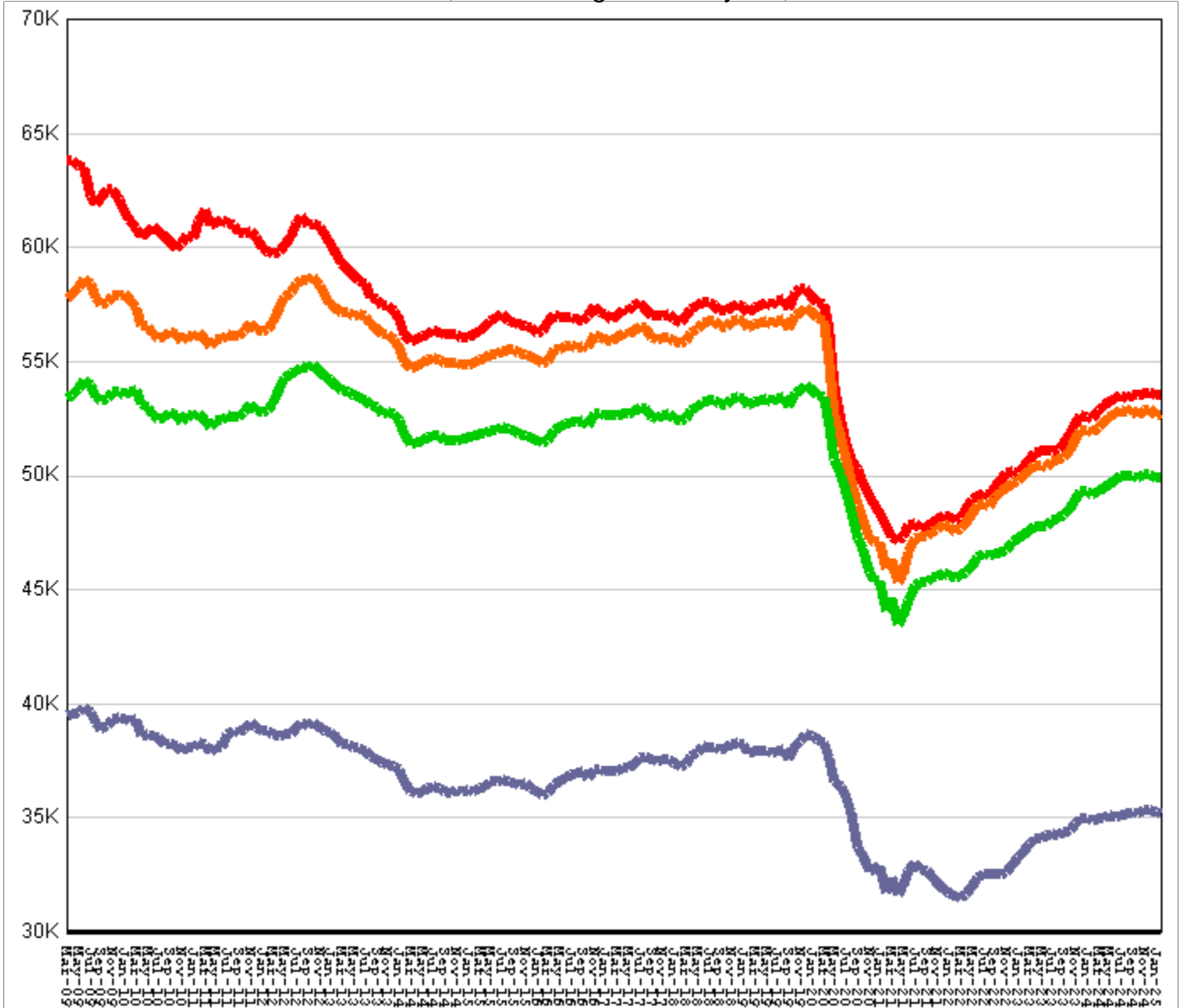


Inmate counts & percentages by age, for past 48 months

Month	Avg Age	Teens		Twenties		Thirties		Forties		Fifties		Sixty & Up	
		Num-ber	Per-cent	Num-ber	Per-cent	Num-ber	Per-cent	Num-ber	Per-cent	Num-ber	Per-cent	Num-ber	Per-cent
Feb-21	40.56	292	0.64%	10791	23.74%	14071	30.96%	10260	22.58%	6422	14.13%	3895	8.57%
Mar-21	40.6	297	0.65%	10662	23.49%	14000	30.84%	10171	22.41%	6370	14.03%	3909	8.61%
Apr-21	40.72	273	0.62%	10312	23.26%	13641	30.76%	9960	22.46%	6278	14.16%	3892	8.78%
May-21	40.65	290	0.64%	10581	23.43%	14017	31.04%	10172	22.53%	6370	14.11%	3945	8.74%
Jun-21	40.62	308	0.67%	10777	23.47%	14242	31.02%	10279	22.39%	6447	14.04%	4002	8.72%
Jul-21	40.61	317	0.68%	10852	23.34%	14425	31.02%	10383	22.33%	6491	13.96%	4045	8.70%
Aug-21	40.64	318	0.68%	10797	23.14%	14523	31.13%	10471	22.45%	6511	13.96%	4068	8.72%
Sep-21	40.67	317	0.68%	10739	22.96%	14593	31.20%	10494	22.44%	6520	13.94%	4123	8.81%
Oct-21	40.71	299	0.64%	10640	22.74%	14642	31.29%	10574	22.59%	6524	13.94%	4133	8.83%
Nov-21	40.73	299	0.64%	10628	22.65%	14700	31.33%	10651	22.70%	6532	13.92%	4149	8.84%
Dec-21	40.75	302	0.64%	10599	22.53%	14729	31.31%	10688	22.72%	6564	13.95%	4177	8.88%
Jan-22	40.81	293	0.63%	10476	22.44%	14637	31.35%	10641	22.79%	6569	14.07%	4184	8.96%
Feb-22	40.83	298	0.64%	10478	22.42%	14673	31.40%	10667	22.83%	6567	14.05%	4204	9.00%
Mar-22	40.83	295	0.63%	10525	22.34%	14764	31.34%	10730	22.78%	6577	13.96%	4233	8.98%
Apr-22	40.86	285	0.60%	10517	22.29%	14759	31.28%	10786	22.86%	6599	13.99%	4249	9.00%
May-22	40.89	282	0.60%	10501	22.23%	14810	31.35%	10819	22.90%	6600	13.97%	4285	9.07%
Jun-22	40.88	307	0.64%	10587	22.20%	14925	31.30%	10929	22.92%	6631	13.91%	4312	9.04%
Jul-22	40.92	316	0.66%	10542	22.05%	14968	31.31%	10971	22.95%	6673	13.96%	4339	9.08%
Aug-22	40.95	319	0.67%	10510	21.98%	15017	31.40%	11013	23.03%	6710	14.03%	4380	9.16%
Sep-22	41	316	0.66%	10428	21.77%	15040	31.39%	10984	22.93%	6738	14.06%	4412	9.21%
Oct-22	41.02	322	0.67%	10369	21.64%	15126	31.57%	11039	23.04%	6753	14.09%	4430	9.24%
Nov-22	41.04	334	0.69%	10392	21.56%	15228	31.59%	11142	23.11%	6800	14.11%	4475	9.28%
Dec-22	41.07	341	0.70%	10353	21.34%	15311	31.56%	11164	23.01%	6852	14.12%	4508	9.29%
Jan-23	41.1	329	0.68%	10330	21.24%	15391	31.65%	11201	23.03%	6873	14.13%	4551	9.36%
Feb-23	41.13	318	0.65%	10332	21.16%	15459	31.66%	11292	23.12%	6877	14.08%	4602	9.42%
Mar-23	41.12	318	0.65%	10385	21.13%	15548	31.63%	11380	23.15%	6926	14.09%	4603	9.36%
Apr-23	41.15	308	0.63%	10377	21.11%	15549	31.63%	11388	23.17%	6929	14.10%	4611	9.38%
May-23	41.17	314	0.64%	10332	21.11%	15552	31.77%	11363	23.21%	6921	14.14%	4626	9.45%
Jun-23	41.21	315	0.64%	10305	20.94%	15617	31.73%	11394	23.15%	6939	14.10%	4649	9.45%
Jul-23	41.24	322	0.65%	10315	20.89%	15689	31.78%	11505	23.30%	6977	14.13%	4684	9.49%
Aug-23	41.3	308	0.62%	10270	20.77%	15630	31.61%	11540	23.34%	6977	14.11%	4730	9.57%
Sep-23	41.31	318	0.64%	10284	20.73%	15648	31.54%	11604	23.39%	7003	14.11%	4766	9.61%
Oct-23	41.33	335	0.67%	10296	20.61%	15759	31.55%	11731	23.49%	7052	14.12%	4814	9.64%
Nov-23	41.35	336	0.67%	10389	20.61%	15859	31.46%	11861	23.53%	7119	14.12%	4850	9.62%
Dec-23	41.38	345	0.68%	10353	20.53%	15837	31.40%	11906	23.60%	7150	14.18%	4853	9.62%
Jan-24	41.4	350	0.69%	10336	20.48%	15914	31.53%	11918	23.61%	7181	14.23%	4874	9.66%
Feb-24	41.44	344	0.68%	10286	20.35%	15886	31.42%	11948	23.63%	7193	14.23%	4899	9.69%
Mar-24	41.47	351	0.69%	10298	20.31%	15906	31.36%	11996	23.65%	7230	14.26%	4937	9.73%
Apr-24	41.49	369	0.72%	10335	20.26%	15965	31.30%	12114	23.75%	7272	14.26%	4983	9.77%
May-24	41.52	382	0.75%	10331	20.18%	16002	31.26%	12137	23.71%	7306	14.27%	5032	9.83%
Jun-24	41.55	395	0.77%	10318	20.14%	16016	31.26%	12144	23.70%	7283	14.21%	5087	9.93%
Jul-24	41.59	394	0.77%	10302	20.10%	16044	31.30%	12223	23.84%	7293	14.23%	5135	10.02%
Aug-24	41.61	382	0.74%	10235	19.96%	16023	31.25%	12226	23.84%	7273	14.18%	5140	10.02%
Sep-24	41.65	381	0.74%	10190	19.89%	15957	31.15%	12249	23.91%	7284	14.22%	5163	10.08%
Oct-24	41.68	379	0.74%	10220	19.88%	16001	31.13%	12254	23.84%	7321	14.24%	5230	10.17%
Nov-24	41.72	374	0.73%	10153	19.77%	15989	31.13%	12286	23.92%	7287	14.19%	5266	10.25%
Dec-24	41.76	375	0.73%	10144	19.73%	15945	31.02%	12329	23.99%	7325	14.25%	5282	10.28%
Jan-25	41.8	379	0.74%	10090	19.68%	15812	30.85%	12343	24.08%	7335	14.31%	5301	10.34%

All housed offenders under GDC jurisdiction

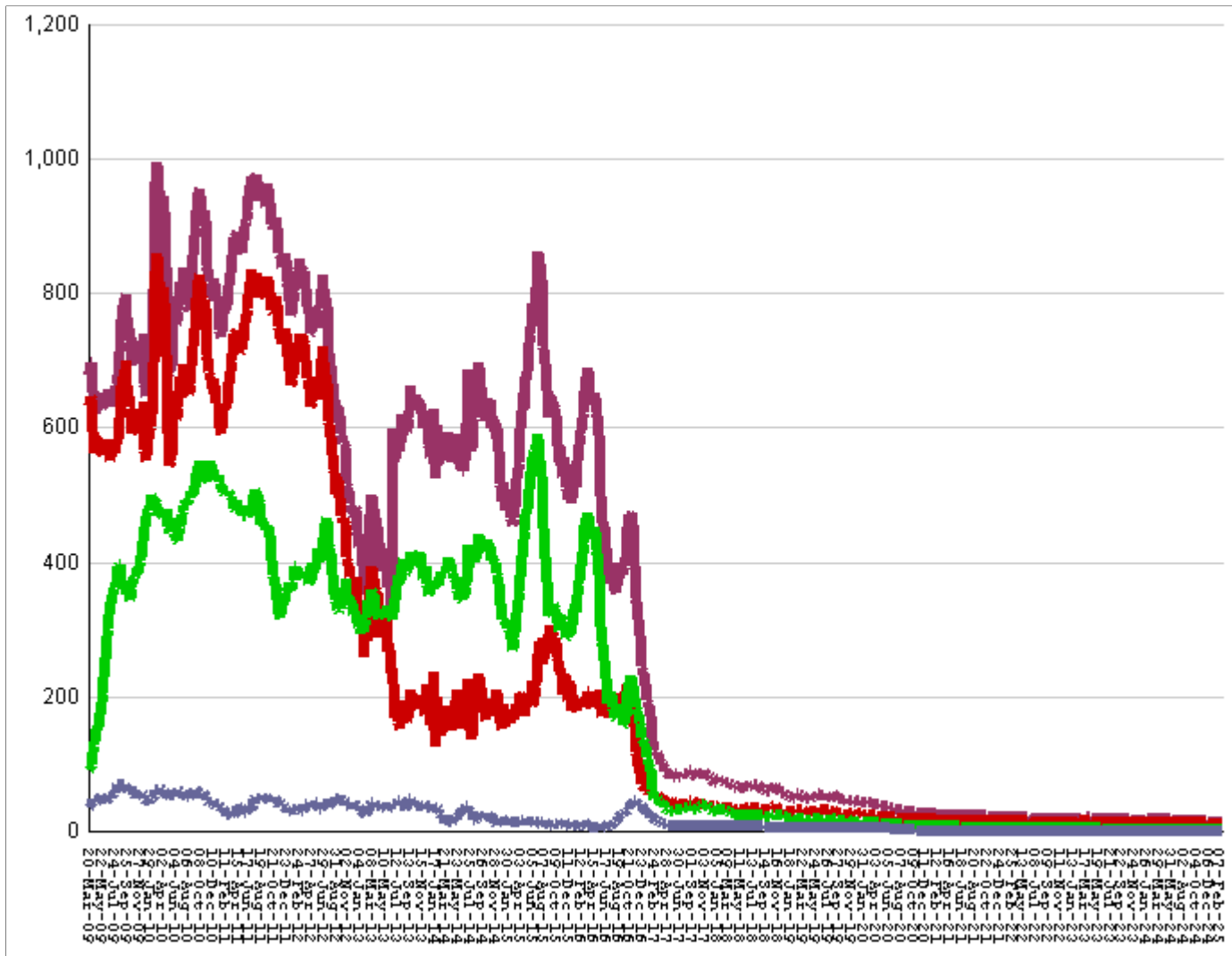
March 20, 2009 through February 21, 2025



All in bed + probs in jail + backlog	RISE BY	122	from	53,476	to	53,598
Probationers in jail	14	at	14
Inmate jail backlog	RISES BY	32	from	746	to	778
All in beds: inmate + Prob + parole	RISE BY	90	from	52,716	to	52,806
Total probationers in beds	RISE BY	30	from	2,799	to	2,829
Probation detention centers	RISE BY	49	from	1,305	to	1,354
Probation boot camps	fall by		from		to	
Probation RSAT	fall by	19	from	1494	to	1,475
Parole revocation centers	fall by		from		to	
All in inmate beds: state + other	RISE BY	60	from	49,917	to	49,977
Other inmate facilities :	RISE BY	82	from	14,698	to	14,780
Inmate boot camps	1	at	1
Private prisons	RISE BY	57	from	7605	to	7,662
County prisons	RISE BY	37	from	4451	to	4,488
Transitional centers	fall by	12	from	2641	to	2,629
In state prisons only	fall by	22	from	35,219	to	35,197

Probationers in jail awaiting placement in facilities

March 20, 2009 through February 21, 2025



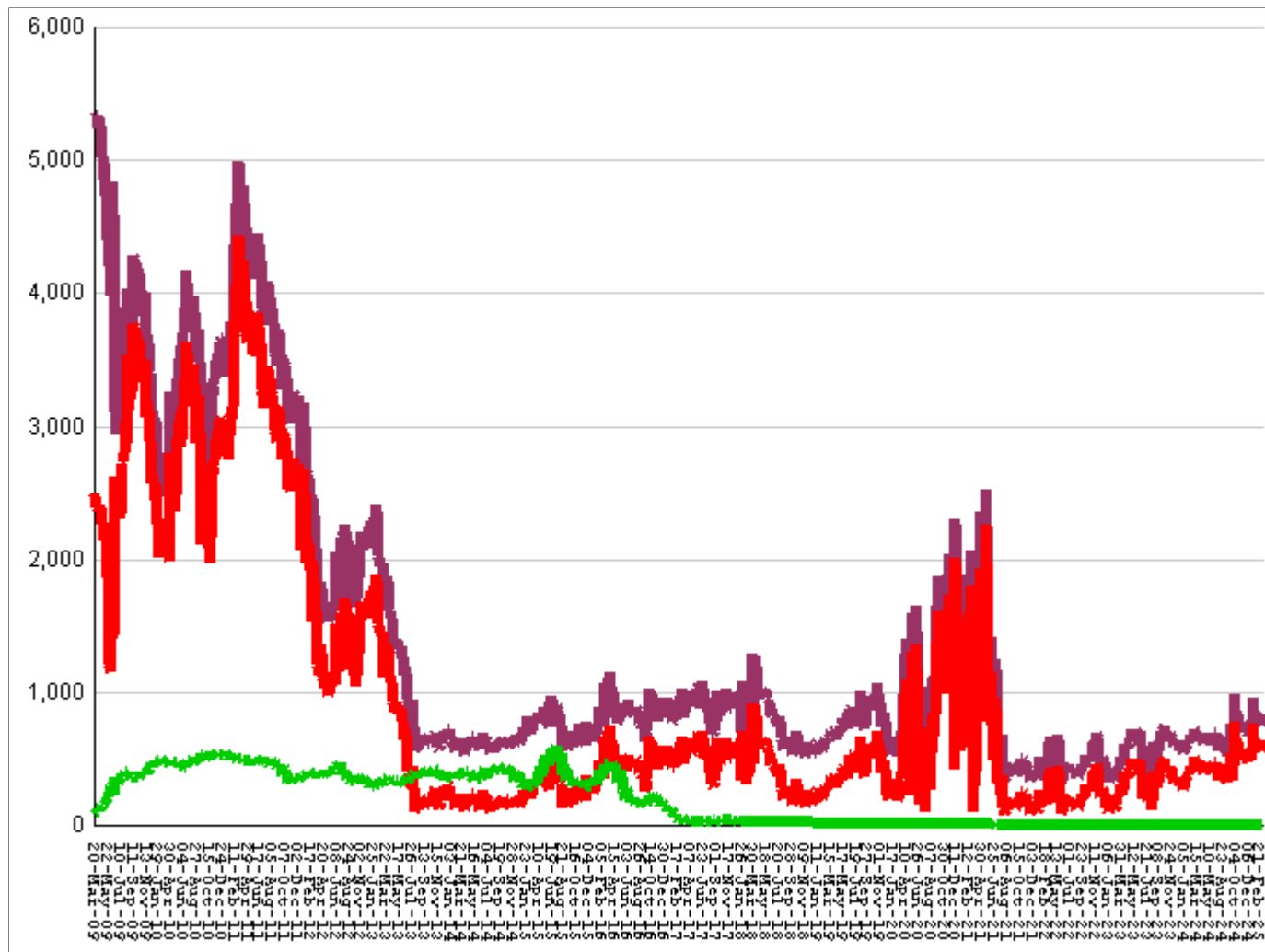
This graph shows, for each Friday since March 20 2009, the number of sentenced felony probationers who were waiting in jail for placement in facilities that GDC operates for housing probationers -- detention centers, probation residential substance abuse treatment (RSAT) centers, and probation boot camps. Counts include both those offenders sentenced directly from court, and those whose street probation was revoked.

Total probationers waiting in jail	level	at	14
... waiting for detention centers	level	at	11
... waiting for probation RSAT	level	at	2
... waiting for probation boot camps	level	at	1

The highest number of probationers waiting in jail was	994	on	05-MAR-10
... highest number waiting for detention centers was	859	on	05-MAR-10
... highest number waiting for probation RSAT was	592	on	10-JUL-15
... highest number waiting for probation boot camps was	70	on	18-SEP-09

State inmates in jail awaiting placement in facilities

March 20, 2009 through February 21, 2025



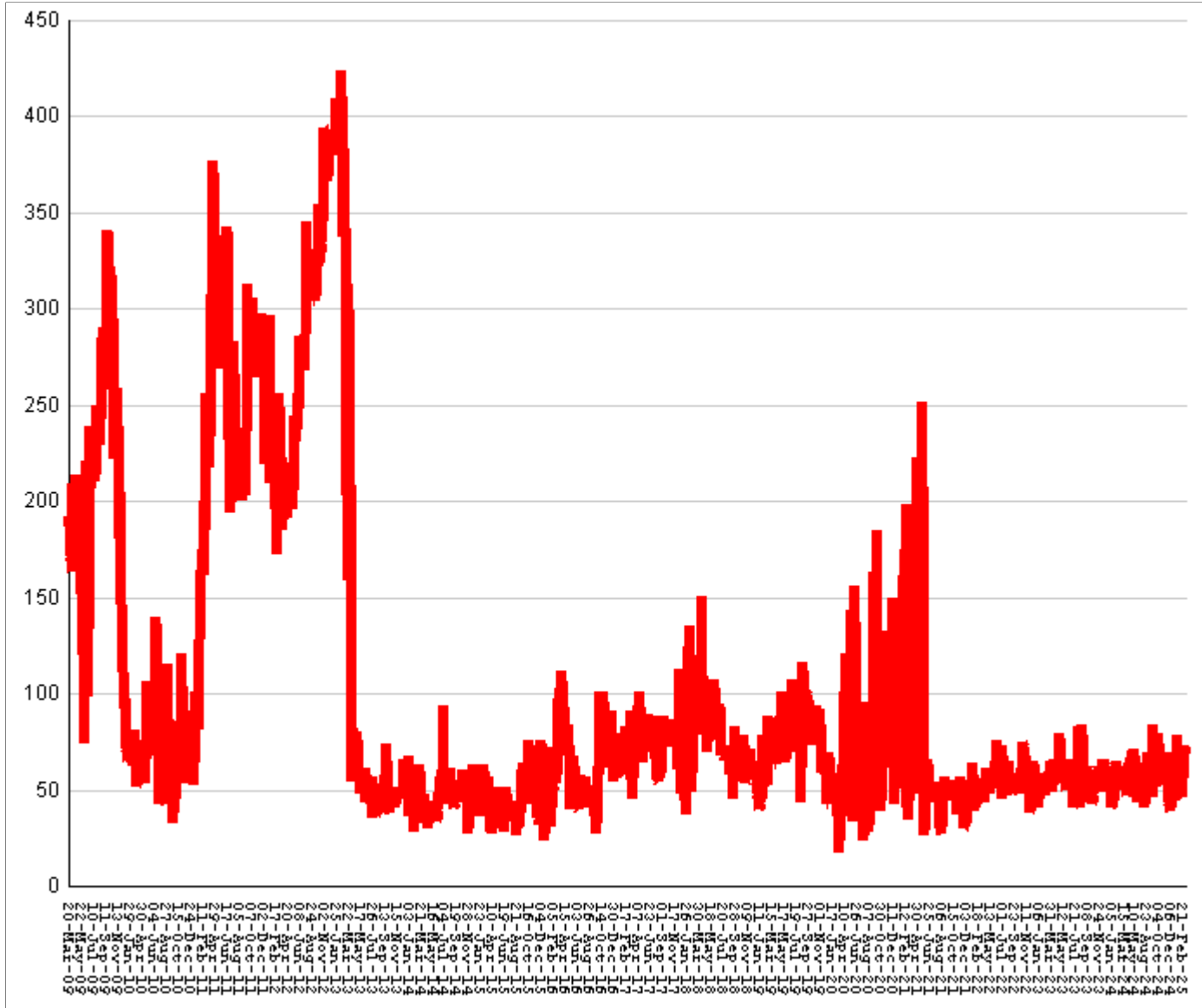
This graph shows, for each Friday since March 2009, the number of prisoners, probationers, and parolees in local jails who have been sentenced or revoked to state prison and whose documents have been received and verified by GDC. Most are almost immediately assigned to a diagnostic center, and are designated as in "admission processing". Of those a few hundred may be in the "transportation delayed" category because there is no room in the assigned diagnostic center, or because the inmate is being held for medical reasons, or for other court proceedings, or other reasons. Those remaining are "ready to be picked up".

Total state inmates waiting in jail	RISE BY	32	from	746	to	778
... not yet assigned to a diagnostic center	fall by	1	from	8	to	7
... total "in admission processing"	RISE BY	33	from	738	to	771
... with "transportation delayed"	RISE BY	1	from	180	to	181
... ready to be picked up	RISE BY	32	from	558	to	590

The highest number of state inmates waiting in jail was	5338	on	27-MAR-09
... highest number not asg to a diagnostic center was	2881	on	12-JUN-09
... highest number in admission processing was	4916	on	25-MAR-11
... highest number with transportation delayed was	645	on	14-JAN-11
... highest number ready to be pickup was	4435	on	25-MAR-11

Female state inmates in jail awaiting pickup

March 20, 2009 through February 21, 2025



This graph shows, for each Friday since March 2009, the number of female state prisoners in local jails who were assigned to diagnostic centers but had not yet been picked up.

Female state inmates in jails waiting picked up	fall by	16	from	68	to	52
The highest number of female inmates waiting in jail was		424	on	01-FEB-13		
The lowest number of female inmates waiting in jail was		17	on	20-MAR-20		

Summary of housed prisoners, parolees, and probationers

Week ending	Prison	Parole	Probation			Prison+parole+probation	Jail		Total
	Total inmates	Revocation centers	Prob RSAT	Boot camp	Detention		Inmate backlog	Probationers	Prison+parole+probation+jail
01-Mar-2024	49200		1449		1358	52007	643	18	52668
08-Mar-2024	49218		1430		1400	52048	673	18	52739
15-Mar-2024	49255		1435		1412	52102	702	18	52822
22-Mar-2024	49304		1417		1404	52125	675	18	52818
29-Mar-2024	49434		1459		1392	52285	722	18	53025
05-Apr-2024	49389		1507		1409	52305	680	18	53003
12-Apr-2024	49458		1454		1406	52318	666	18	53002
19-Apr-2024	49474		1455		1417	52346	692	18	53056
26-Apr-2024	49533		1477		1436	52446	639	18	53103
03-May-2024	49550		1512		1421	52483	660	18	53161
10-May-2024	49492		1504		1422	52418	643	18	53079
17-May-2024	49615		1451		1410	52476	645	18	53139
24-May-2024	49652		1443		1453	52548	688	18	53254
31-May-2024	49785		1467		1444	52696	612	18	53326
07-Jun-2024	49769		1491		1410	52670	608	17	53295
14-Jun-2024	49784		1492		1419	52695	631	17	53343
21-Jun-2024	49907		1472		1410	52789	643	17	53449
28-Jun-2024	49944		1476		1369	52789	687	17	53493
05-Jul-2024	49897		1493		1369	52759	690	16	53465
12-Jul-2024	50027		1472		1392	52891	549	17	53457
19-Jul-2024	50007		1496		1418	52921	588	17	53526
26-Jul-2024	49939		1433		1447	52819	631	17	53467
02-Aug-2024	49931		1424		1438	52793	598	17	53408
09-Aug-2024	49870		1418		1417	52705	526	17	53248
16-Aug-2024	49881		1429		1400	52710	609	17	53336
23-Aug-2024	49950		1453		1388	52791	598	17	53406
30-Aug-2024	50050		1466		1417	52933	598	17	53548
06-Sep-2024	49948		1452		1456	52856	549	17	53422
13-Sep-2024	49996		1457		1449	52902	535	17	53454
20-Sep-2024	50025		1467		1428	52920	660	17	53597
27-Sep-2024	49948		1515		1424	52887	755	17	53659
04-Oct-2024	49700		1465		1324	52489	989	17	53495
11-Oct-2024	49904		1490		1297	52691	857	16	53564
18-Oct-2024	49937		1494		1257	52688	769	16	53473
25-Oct-2024	49914		1461		1245	52620	766	16	53402
01-Nov-2024	49982		1487		1290	52759	760	16	53535
08-Nov-2024	49986		1504		1307	52797	724	15	53536
15-Nov-2024	50025		1480		1374	52879	710	15	53604
22-Nov-2024	50076		1484		1384	52944	710	15	53669
29-Nov-2024	50000		1511		1405	52916	751	15	53682
06-Dec-2024	50030		1493		1392	52915	688	14	53617
13-Dec-2024	50065		1466		1387	52918	711	14	53643
20-Dec-2024	50089		1505		1370	52964	692	14	53670
27-Dec-2024	50093		1487		1357	52937	702	14	53653
03-Jan-2025	50009		1474		1349	52832	794	14	53640
10-Jan-2025	49957		1478		1312	52747	778	14	53539
17-Jan-2025	50011		1456		1309	52776	752	14	53542
24-Jan-2025	49767		1407		1212	52386	957	14	53357
31-Jan-2025	49828		1453		1244	52525	862	14	53401
07-Feb-2025	49842		1474		1280	52596	828	14	53438
14-Feb-2025	49917		1494		1305	52716	746	14	53476
21-Feb-2025	49977		1475		1354	52806	778	14	53598

Offenders housed in facilities for state prisoners

Week ending	In state prisons	In facilities other than state prisons						Total Inmates
		Transition centers	County prisons	Pre-rel centers	Private prisons	Inmate boot camps	Total others	
01-Mar-2024	34885	2227	4497		7591	0	14315	49200
08-Mar-2024	34943	2226	4457		7592	0	14275	49218
15-Mar-2024	34936	2264	4446		7609	0	14319	49255
22-Mar-2024	34924	2323	4463		7594	0	14380	49304
29-Mar-2024	34993	2389	4450		7602	0	14441	49434
05-Apr-2024	34968	2415	4435		7571	0	14421	49389
12-Apr-2024	34979	2429	4473		7577	0	14479	49458
19-Apr-2024	34957	2461	4467		7589	0	14517	49474
26-Apr-2024	35020	2512	4410		7591	0	14513	49533
03-May-2024	35061	2528	4395		7566	0	14489	49550
10-May-2024	35022	2558	4364		7548	0	14470	49492
17-May-2024	35118	2584	4358		7555	0	14497	49615
24-May-2024	35109	2638	4355		7550	0	14543	49652
31-May-2024	35123	2674	4440		7548	0	14662	49785
07-Jun-2024	35023	2682	4494		7570	0	14746	49769
14-Jun-2024	34995	2718	4500		7571	0	14789	49784
21-Jun-2024	35048	2737	4524		7598	0	14859	49907
28-Jun-2024	35076	2740	4540		7588	0	14868	49944
05-Jul-2024	35064	2729	4531		7573	0	14833	49897
12-Jul-2024	35172	2754	4521		7580	0	14855	50027
19-Jul-2024	35164	2754	4505		7584	0	14843	50007
26-Jul-2024	35139	2751	4478		7571	0	14800	49939
02-Aug-2024	35134	2752	4502		7543	0	14797	49931
09-Aug-2024	35109	2749	4482		7529	1	14761	49870
16-Aug-2024	35109	2747	4489		7535	1	14772	49881
23-Aug-2024	35149	2756	4507		7537	1	14801	49950
30-Aug-2024	35243	2761	4517		7528	1	14807	50050
06-Sep-2024	35195	2716	4508		7528	1	14753	49948
13-Sep-2024	35217	2752	4493		7533	1	14779	49996
20-Sep-2024	35238	2746	4506		7534	1	14787	50025
27-Sep-2024	35230	2724	4475		7518	1	14718	49948
04-Oct-2024	35111	2663	4437		7488	1	14589	49700
11-Oct-2024	35197	2679	4493		7534	1	14707	49904
18-Oct-2024	35211	2739	4469		7517	1	14726	49937
25-Oct-2024	35182	2745	4466		7520	1	14732	49914
01-Nov-2024	35239	2765	4442		7535	1	14743	49982
08-Nov-2024	35246	2756	4434		7549	1	14740	49986
15-Nov-2024	35323	2747	4403		7551	1	14702	50025
22-Nov-2024	35354	2755	4428		7538	1	14722	50076
29-Nov-2024	35292	2750	4431		7526	1	14708	50000
06-Dec-2024	35285	2756	4451		7537	1	14745	50030
13-Dec-2024	35339	2763	4429		7533	1	14726	50065
20-Dec-2024	35382	2755	4417		7534	1	14707	50089
27-Dec-2024	35380	2734	4433		7545	1	14713	50093
03-Jan-2025	35335	2721	4419		7533	1	14674	50009
10-Jan-2025	35311	2691	4428		7526	1	14646	49957
17-Jan-2025	35313	2677	4467		7553	1	14698	50011
24-Jan-2025	35190	2631	4416		7529	1	14577	49767
31-Jan-2025	35220	2660	4419		7528	1	14608	49828
07-Feb-2025	35212	2646	4438		7545	1	14630	49842
14-Feb-2025	35219	2641	4451		7605	1	14698	49917
21-Feb-2025	35197	2629	4488		7662	1	14780	49977

Offenders waiting in local jails for state facilities

Week ending	Probationers waiting in jail				State prisoners waiting in jail					Assigned females
	.. for PDCs	.. for RSAT	.. for boot camps	Total	Total backlog	Not yet assigned	In adm process	Delayed transport	Ready for pickup	
01-Mar-2024	14	3	1	18	643	40	603	188	415	54
08-Mar-2024	14	3	1	18	673	37	636	185	451	57
15-Mar-2024	14	3	1	18	702	37	665	188	477	52
22-Mar-2024	14	3	1	18	675	37	638	195	443	65
29-Mar-2024	14	3	1	18	722	23	699	192	507	61
05-Apr-2024	14	3	1	18	680	23	657	190	467	49
12-Apr-2024	14	3	1	18	666	22	644	187	457	47
19-Apr-2024	14	3	1	18	692	25	667	185	482	53
26-Apr-2024	14	3	1	18	639	26	613	189	424	58
03-May-2024	14	3	1	18	660	24	636	193	443	69
10-May-2024	14	3	1	18	643	23	620	193	427	71
17-May-2024	14	3	1	18	645	23	622	196	426	57
24-May-2024	14	3	1	18	688	24	664	191	473	67
31-May-2024	14	3	1	18	612	25	587	195	392	63
07-Jun-2024	13	3	1	17	608	25	583	193	390	57
14-Jun-2024	13	3	1	17	631	24	607	188	419	43
21-Jun-2024	13	3	1	17	643	24	619	187	432	58
28-Jun-2024	13	3	1	17	687	26	661	189	472	64
05-Jul-2024	12	3	1	16	690	27	663	193	470	50
12-Jul-2024	13	3	1	17	549	28	521	188	333	41
19-Jul-2024	13	3	1	17	588	28	560	180	380	50
26-Jul-2024	13	3	1	17	631	29	602	183	419	54
02-Aug-2024	13	3	1	17	598	27	571	181	390	59
09-Aug-2024	13	3	1	17	526	28	498	179	319	46
16-Aug-2024	13	3	1	17	609	24	585	184	401	69
23-Aug-2024	13	3	1	17	598	24	574	185	389	61
30-Aug-2024	13	3	1	17	598	25	573	186	387	63
06-Sep-2024	13	3	1	17	549	25	524	182	342	59
13-Sep-2024	13	3	1	17	535	25	510	183	327	56
20-Sep-2024	13	3	1	17	660	26	634	182	452	84
27-Sep-2024	13	3	1	17	755	27	728	184	544	52
04-Oct-2024	13	3	1	17	989	25	964	183	781	79
11-Oct-2024	12	3	1	16	857	26	831	185	646	69
18-Oct-2024	12	3	1	16	769	25	744	188	556	57
25-Oct-2024	12	3	1	16	766	26	740	192	548	57
01-Nov-2024	12	3	1	16	760	25	735	186	549	69
08-Nov-2024	12	2	1	15	724	25	699	189	510	53
15-Nov-2024	12	2	1	15	710	25	685	187	498	53
22-Nov-2024	12	2	1	15	710	24	686	190	496	39
29-Nov-2024	12	2	1	15	751	24	727	187	540	43
06-Dec-2024	11	2	1	14	688	24	664	188	476	48
13-Dec-2024	11	2	1	14	711	21	690	184	506	57
20-Dec-2024	11	2	1	14	692	22	670	180	490	54
27-Dec-2024	11	2	1	14	702	23	679	178	501	41
03-Jan-2025	11	2	1	14	794	22	772	179	593	47
10-Jan-2025	11	2	1	14	778	22	756	180	576	46
17-Jan-2025	11	2	1	14	752	22	730	182	548	53
24-Jan-2025	11	2	1	14	957	20	937	182	755	78
31-Jan-2025	11	2	1	14	862	21	841	184	657	60
07-Feb-2025	11	2	1	14	828	9	819	180	639	73
14-Feb-2025	11	2	1	14	746	8	738	180	558	68
21-Feb-2025	11	2	1	14	778	7	771	181	590	52