

# Friday Report – overview and contents

The pages in The Friday Report are about adult offenders in Georgia's prisons and jails. They contain statistical snapshots and trends in the populations and movements of offenders in the state prison system, on probation, on parole, and in local jails. Information comes from databases of the Georgia Department of Corrections (GDC) and the Board of Pardons and Paroles, and from data provided by local jailers. Information is summarized into tables in the GDC/Parole Data Warehouse, and is extracted into these pages each Friday. Pages are organized according to the table that supplied the data.

The Monthly Research Table, named "MO_RESRCH" or simply "MO", contains data about state prisoners, grouped into statistically interesting categories. The table contains one record per month, from January 2000 to the present. Despite its being "monthly", it is updated weekly, because some data trickles in for several weeks before it becomes stable history.	
Page	Contents
MO-01	Clemencies and maxouts. Monthly graph from 2000 to present shows the monthly departures from prison via actions by the Georgia Parole Board (clemencies), and via service of 100% of the court ordered sentence (maxouts)
MO-02	48 months of releases. Table shows counts and percentages of releases via clemencies and maxouts, with and without probation to follow, for each of the past 48 months.
MO-03	Methamphetamine. Monthly graph from 2000 to present shows admissions, departures, population, and percent of population of inmates with a current offense of methamphetamine possession, sale, manufacturing, or trafficking, and the changing racial composition of the methamphetamine population.
MO-04	Non-violent first incarcerants. Monthly graph from 2000 to present shows admissions, departures, population, and percent of population of inmates without violent or sex crimes, who are serving their first Georgia felony incarceration.
MO-05	Seven Deadly Sins. Monthly graph from 2000 to present shows admissions, departures, population, and percent of population of inmates convicted of kidnapping, armed robbery, rape, aggravated sodomy, aggravated sexual battery, and aggravated child molestation, for whom especially severe penalties are prescribed.
MO-06	48 months of inmate subpopulations. Table shows number and percentage of white and non-white inmates with methamphetamine offenses, and non-violent first incarcerants, and inmates convicted of the Seven Deadly Sins.
MO-07	Inmate age overview. Line graph shows the average age of the inmate population, by month from 2000 to the present. Pie chart shows the number of currently active inmates in their teens, twenties, thirties, forties, fifties, and age sixty+.
MO-08	Counts by age group. Graphs show the count, by month from 2000 to the present, of inmates in their teens, twenties, thirties, forties, fifties, and age sixty+.
MO-09	Percentages by age group. Graphs show the <i>percentages</i> , by month from 2000 to the present, of inmates in their teens, twenties, thirties, forties, fifties, and age sixty+.
MO-10	48 months of inmate ages. Table shows average age of the standing population, and counts and percentages of teens, twenties, thirties, forties, fifties, and sixty+, for each of the past 48 months.

# Friday Report – overview and contents (*continued*)

The MSR Table is based on the Management Summary Report (MSR), a snapshot report posted each week in GDC's Scribe database. MSR_RESRCH gathers that data into weekly trends, with one record for each Friday since March 20th, 2009.	
Page	Contents
MSR-01	All housed offenders. Weekly graph from March 20, 2009 to present, showing counts of inmates in state prisons, transitional centers, county prisons, private prisons, inmate boot camps, parole revocation centers, probation Residential Substance Abuse Treatment (RSAT), probation boot camps, probation detention centers, plus the inmate jail backlog and probationers in jail waiting for state facilities.
MSR-02	Probationers in jail. Weekly graph from March 20, 2009 to present, showing counts of probationers in local jails awaiting placement in probation detention centers, probation RSAT centers, and probation boot camps.
MSR-03	State inmates in jail. Weekly graph from March 20, 2009 to present, showing counts of state inmates in local jails awaiting placement in state prison facilities – including those who have not yet been assigned to a diagnostic center, those whose transportation has been delayed for some reason, and those who are ready to be picked up.
MSR-04	Female state inmates in jail. Weekly graph from March 20, 2009 to present, showing counts of female state inmates awaiting placement in a state prison for females.
MSR-05	52-week table: housed offenders. Data for each of the past 52 weeks, showing total prison inmates, parolees in revocation centers, probationers in RSAT/boot camp/detention centers, inmate jail backlog, probationers in jail waiting for facilities, with subtotals.
MSR-06	52-week table: state prisoners. Data for each of the past 52 weeks, showing inmates in state prisons, transition centers, county prisons, pre-release centers, private prisons, and inmate boot camps, with subtotals.
MSR-07	52-week table: waiting in jail. Data for each of the past 52 weeks, showing probationers waiting for detention centers, RSAT, and boot camp; and state prisoners not yet assigned to diagnostic centers, in admission process, with delayed transport, and ready for pickup, with subtotals.

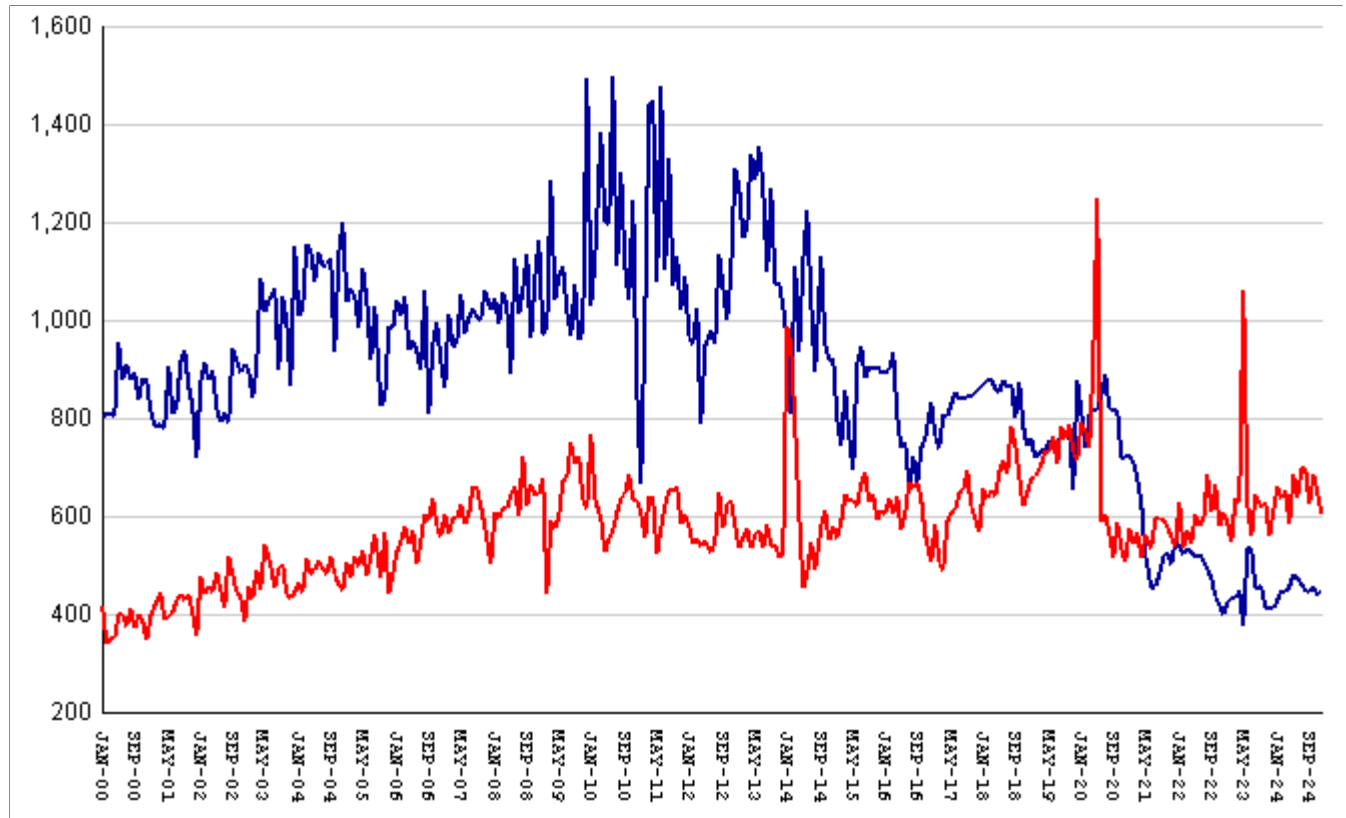
The DCA table consists mainly of data submitted from each of Georgia's 140+ local jails, via the Georgia Crime Information Center (GCIC) to the Georgia Department of Community Affairs (DCA), which publishes its [County Jail Inmate Population Report](#) on its web site each month. GDC has collected summary statewide data from this report every month since its inception in January, 1993. The table also contains the inmate jail backlog as computed by GDC for the last Friday of each month, for comparison with the jailers' count of state inmates. Although nominally a monthly table, DCA\_RESRCH is updated weekly to insure that the DCA data is correctly synchronized with the GDC jail backlog data.

Page	Contents
DCA-01	Jail composition. Monthly graph from 1993 to the present shows trends in the numbers of unsentenced inmates, state inmates, county inmates, and other inmates.
DCA-02	Two views of jail backlog. Monthly graph from 1993 to present compares jailers' count of "state inmates" with GDC's count of the "inmate jail backlog", and explains that both are valid counts of different phenomena.
DCA-03	48-month table: local jails. Data from Georgia jailers for each of the past 48 months, showing total jail population, capacity, utilization, and number and percent of unsentenced inmates, state inmates, county inmates, and other inmates.

## Releases by clemency and maxout, Jan-2000 to Dec-2024

There are two main ways of being released from a Georgia prison -- by actions of the Board of Pardons and Paroles ("Clemencies") and by service of 100% of the court-ordered sentences ("Maxouts"). "Clemency" includes paroles, reprieves, commutations, and transfer to other confinement prior to expiration of sentence.

"Other Releases" includes deaths, and sentences modified or overturned by the courts. Clemencies and maxouts may or may not be followed by periods of probation.



A. Clemency with probation to follow	falls by	1	from	390	to	389
B. Clemency only	RISES BY	8	from	52	to	60
C. Maxout with probation to follow	falls by	36	from	591	to	555
D. Maxout only (unsupervised)	falls by	8	from	56	to	48
E. Other releases	RISES BY	10	from	23	to	33
F. Total releases (A+B+C+D+E)	falls by	27	from	1112	to	1085
<b>G. Total clemencies (A+B) (top line)</b>	<b>RISES BY</b>	<b>7</b>	<b>from</b>	<b>442</b>	<b>to</b>	<b>449</b>
<b>H. Total maxouts(C+D) (bottom line)</b>	<b>falls by</b>	<b>44</b>	<b>from</b>	<b>647</b>	<b>to</b>	<b>603</b>
I. % of releases by clemency (G/F)	RISES BY	1.63%	from	39.75%	to	41.38%
J. % of releases by maxout (H/F)	falls by	2.6%	from	58.18%	to	55.58%
K. Supervised releases (A+B+C)	falls by	29	from	1033	to	1004
L. % unsupervised releases (D/F)	falls by	.62%	from	5.04%	to	4.42%
M. % supervised releases (K/F)	falls by	.37%	from	92.9%	to	92.53%

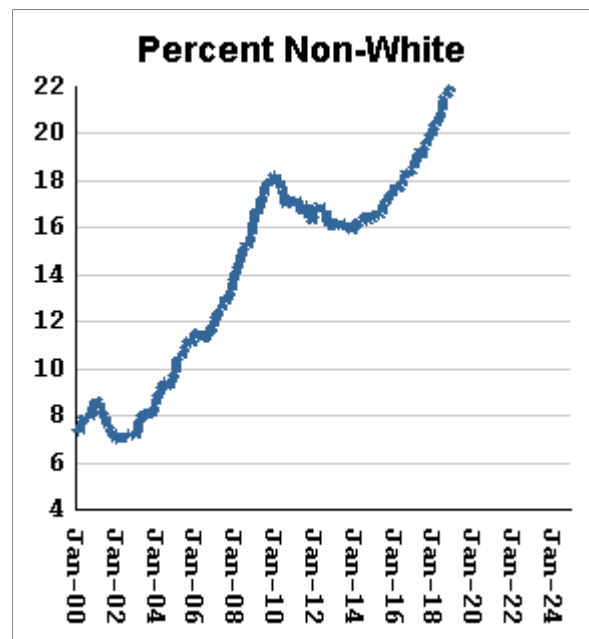
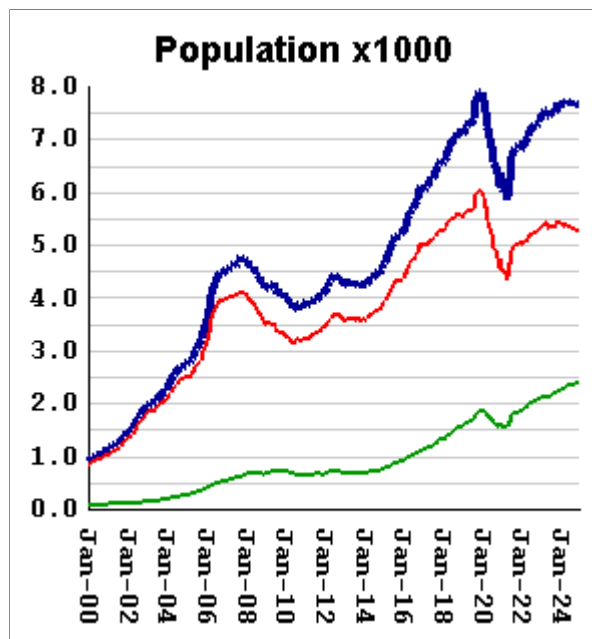
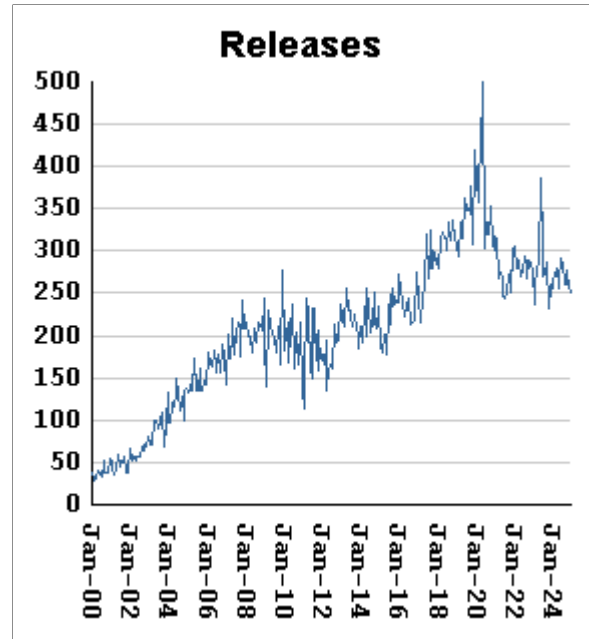
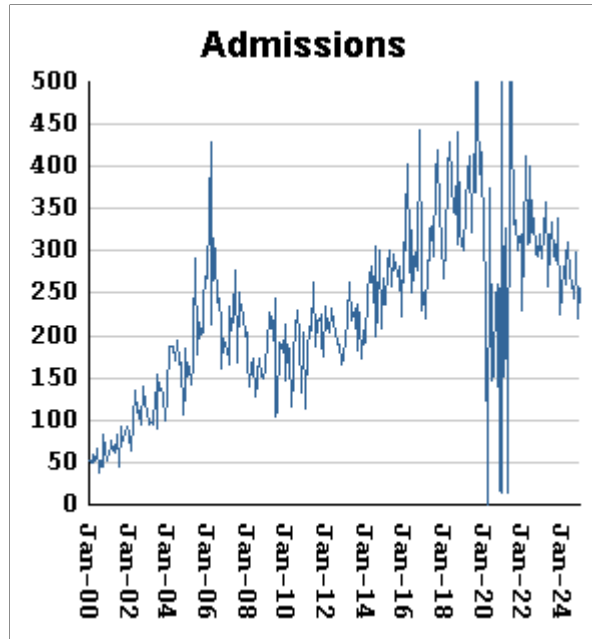
## Monthly releases from prison by type of release, for the past 48 months

Month	A	B	C	D	E	F	G	H	I	J
	Clemency + Prob	Clemency Only	Maxout + Prob	Maxout Only	Other Rels	Total Releases (A+B+C+D+E)	Total Clemency (A+B)	Total Maxout (C+D)	Percent Clemency (G/F)	Percent Maxout (H/F)
Jan-21	634	91	516	58	21	1320	725	574	54.92%	43.48%
Feb-21	615	97	481	62	20	1275	712	543	55.84%	42.59%
Mar-21	568	108	496	70	16	1258	676	566	53.74%	44.99%
Apr-21	531	98	454	61	24	1168	629	515	53.85%	44.09%
May-21	445	78	508	54	21	1106	523	562	47.29%	50.81%
Jun-21	367	85	468	67	21	1008	452	535	44.84%	53.08%
Jul-21	391	66	534	63	19	1073	457	597	42.59%	55.64%
Aug-21	410	71	532	63	28	1104	481	595	43.57%	53.89%
Sep-21	441	78	522	68	32	1141	519	590	45.49%	51.71%
Oct-21	447	78	525	56	21	1127	525	581	46.58%	51.55%
Nov-21	425	79	493	65	18	1080	504	558	46.67%	51.67%
Dec-21	468	83	483	56	18	1108	551	539	49.73%	48.65%
Jan-22	458	81	552	75	26	1192	539	627	45.22%	52.60%
Feb-22	443	81	465	71	24	1084	524	536	48.34%	49.45%
Mar-22	460	73	514	57	16	1120	533	571	47.59%	50.98%
Apr-22	456	72	471	70	16	1085	528	541	48.66%	49.86%
May-22	440	78	541	63	26	1148	518	604	45.12%	52.61%
Jun-22	459	62	527	58	21	1127	521	585	46.23%	51.91%
Jul-22	442	68	529	60	14	1113	510	589	45.82%	52.92%
Aug-22	426	66	617	67	21	1197	492	684	41.10%	57.14%
Sep-22	397	78	550	58	18	1101	475	608	43.14%	55.22%
Oct-22	374	61	606	60	23	1124	435	666	38.70%	59.25%
Nov-22	366	53	524	54	19	1016	419	578	41.24%	56.89%
Dec-22	344	58	550	59	28	1039	402	609	38.69%	58.61%
Jan-23	375	51	527	59	23	1035	426	586	41.16%	56.62%
Feb-23	388	46	495	51	17	997	434	546	43.53%	54.76%
Mar-23	376	56	574	62	24	1092	432	636	39.56%	58.24%
Apr-23	390	57	574	53	26	1100	447	627	40.64%	57.00%
May-23	328	46	933	128	20	1455	374	1061	25.70%	72.92%
Jun-23	462	71	567	59	19	1178	533	626	45.25%	53.14%
Jul-23	461	73	515	44	25	1118	534	559	47.76%	50.00%
Aug-23	403	51	593	51	22	1120	454	644	40.54%	57.50%
Sep-23	407	52	578	42	10	1089	459	620	42.15%	56.93%
Oct-23	364	50	577	52	31	1074	414	629	38.55%	58.57%
Nov-23	356	55	495	63	19	988	411	558	41.60%	56.48%
Dec-23	366	47	554	58	21	1046	413	612	39.48%	58.51%
Jan-24	367	62	601	60	32	1122	429	661	38.24%	58.91%
Feb-24	395	52	578	59	24	1108	447	637	40.34%	57.49%
Mar-24	380	63	589	64	20	1116	443	653	39.70%	58.51%
Apr-24	412	45	528	57	33	1075	457	585	42.51%	54.42%
May-24	425	57	615	69	26	1192	482	684	40.44%	57.38%
Jun-24	409	64	577	59	23	1132	473	636	41.78%	56.18%
Jul-24	401	59	631	67	38	1196	460	698	38.46%	58.36%
Aug-24	382	67	641	58	19	1167	449	699	38.47%	59.90%
Sep-24	380	64	560	66	34	1104	444	626	40.22%	56.70%
Oct-24	401	58	631	56	28	1174	459	687	39.10%	58.52%
Nov-24	390	52	591	56	23	1112	442	647	39.75%	58.18%
Dec-24	389	60	555	48	33	1085	449	603	41.38%	55.58%

## Inmates with meth crimes, by month, Jan-2000 to Dec-2024

Methamphetamine is one of the most addictive drugs ever known. At first it induces intense euphoria, but with continued use causes severe depression and physical deterioration, including the dental catastrophe known as "meth mouth".

Georgia's meth epidemic peaked in 2007-2008, then declined, but is again growing. It started in the predominantly white northern counties, with blacks accounting for only about 5% of convictions. But black usage has expanded, and now accounts for about 15% of convictions.



Methamphetamine admissions

RISE BY 37 from 220 to 257

Methamphetamine releases

fall by 5 from 257 to 252

Methamphetamine population

RISES BY 5 from 7668 to 7673

Meth white population

falls by 6 from 5288 to 5282

Meth non-white population

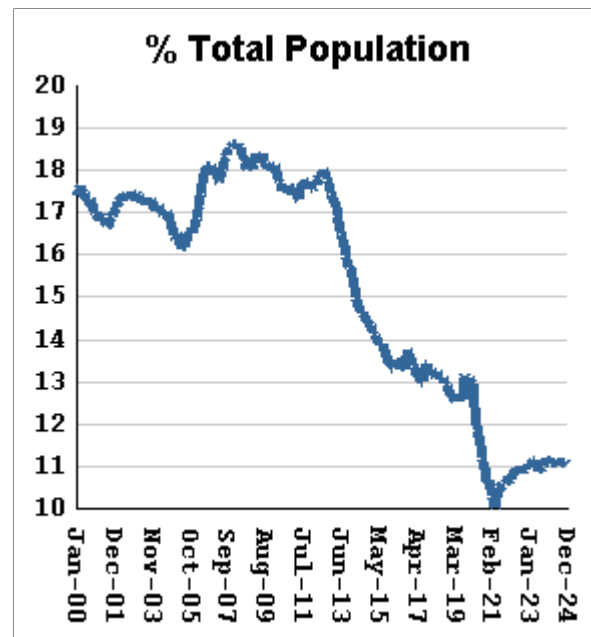
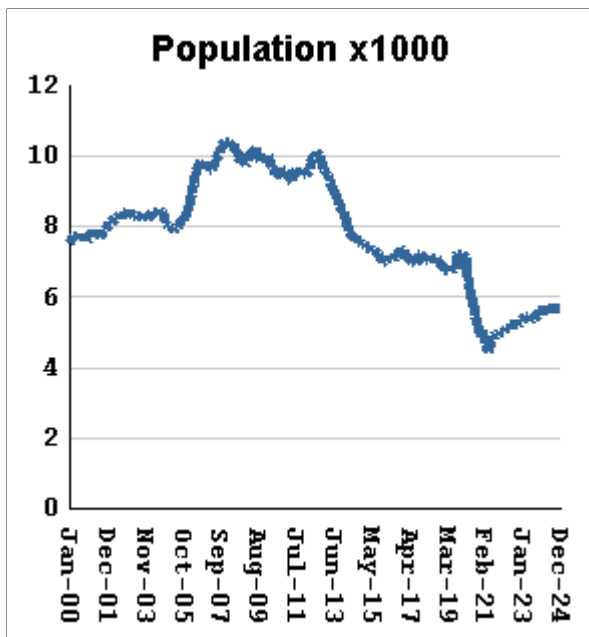
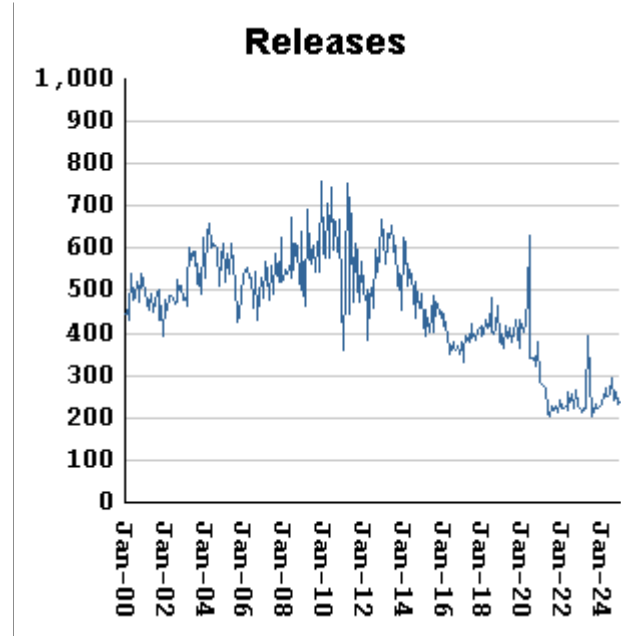
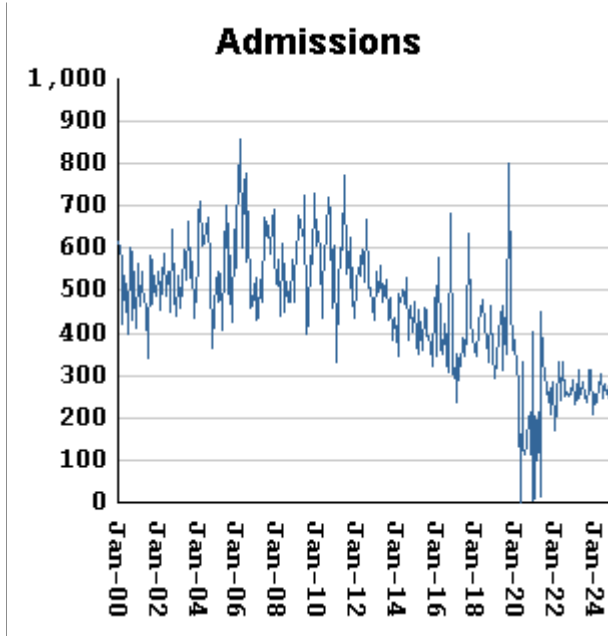
RISES BY 11 from 2380 to 2391

Percent meth inmates who are non-white

RISES BY .12 % from 31.04% to 31.16%

## Non-violent first-incarcerants, by month, Jan-2000 to Dec-2024

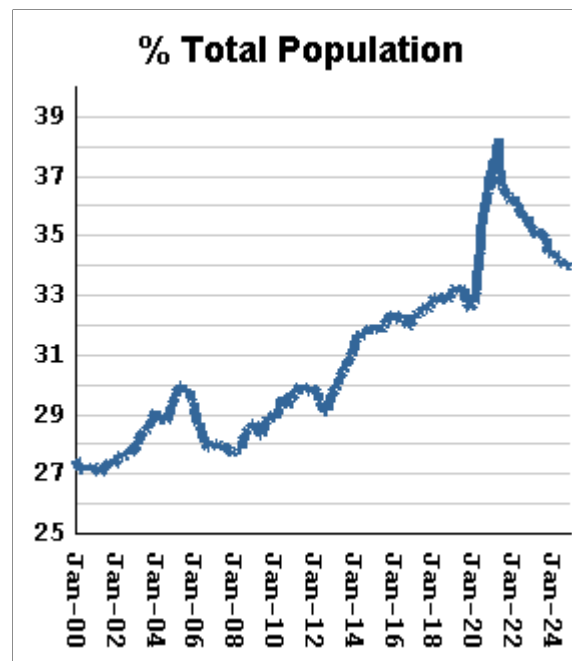
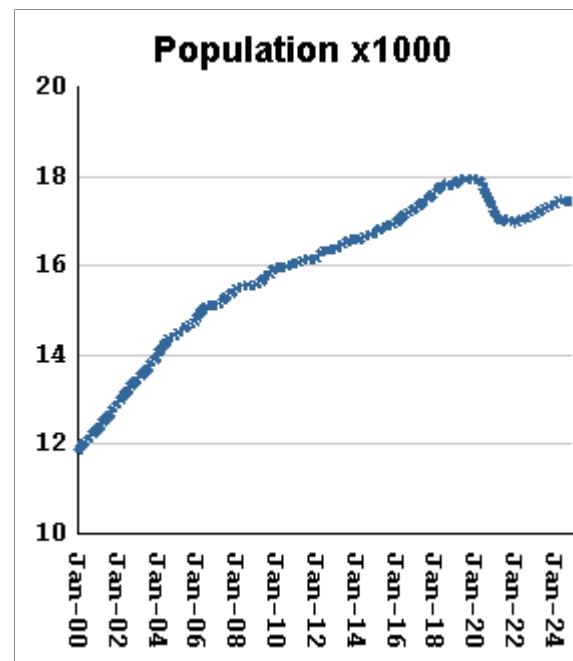
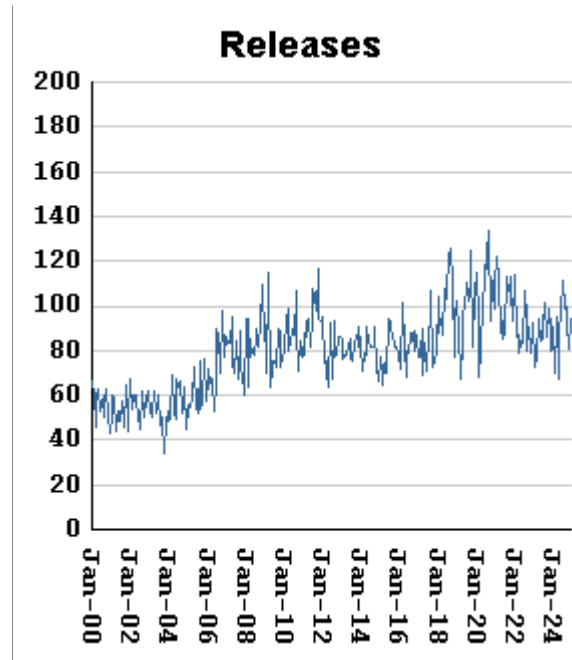
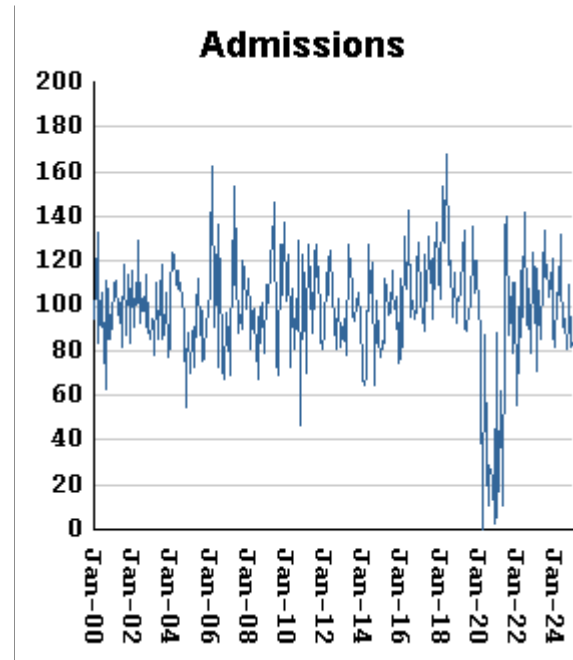
Historically, about one in six Georgia prison inmates has been a first-time incarcerant with a non-violent crime. In 2012 Georgia passed HB1176, which aimed to curb the growth of prison population by steering the least dangerous, least hardened offenders away from prison through pre-trial intervention, diversion, drug courts and treatment programs, and raising the dollar thresholds that define property felonies. The expectation is that over time, these measures will reduce the percentage of first-time non-violent incarcerants in prison.



Non-viol/1st-Incar admissions	fall by	3	from	228	to	225
Non-viol/1st-Incar releases	RISE BY	1	from	234	to	235
Non-viol/1st-Incar population	falls by	10	from	5687	to	5677
Non-viol/1st-Incar % of total population	falls by	.03 %	from	11.07%	to	11.04%

## "Seven Deadly Sins" by month, Jan-2000 to Dec-2024

Tough legislation in 1995 imposed mandatory ten-year minimum terms for kidnapping, armed robbery, rape, aggravated sodomy, aggravated sexual battery, and aggravated child molestation, and a minimum of 25 years for murder. A second conviction resulted in life without parole. As predicted, longer prison terms caused population to climb steeply for about a decade. It then began to level off, as releases started catching up with admissions. The 2008 dip in percentage of total population (bottom right) was caused by the surge of methamphetamine convictions (Page MO-03). Note: these graphs include inmates convicted before 1995.



"Seven Deadly Sin" admissions	RISE BY	1	from	82	to	83
"Seven Deadly Sin" releases	RISE BY	13	from	81	to	94
"Seven Deadly Sin" population	falls by	11	from	17459	to	17448
"Seven Deadly Sin" % of total population	falls by	.05 %	from	34%	to	33.95%

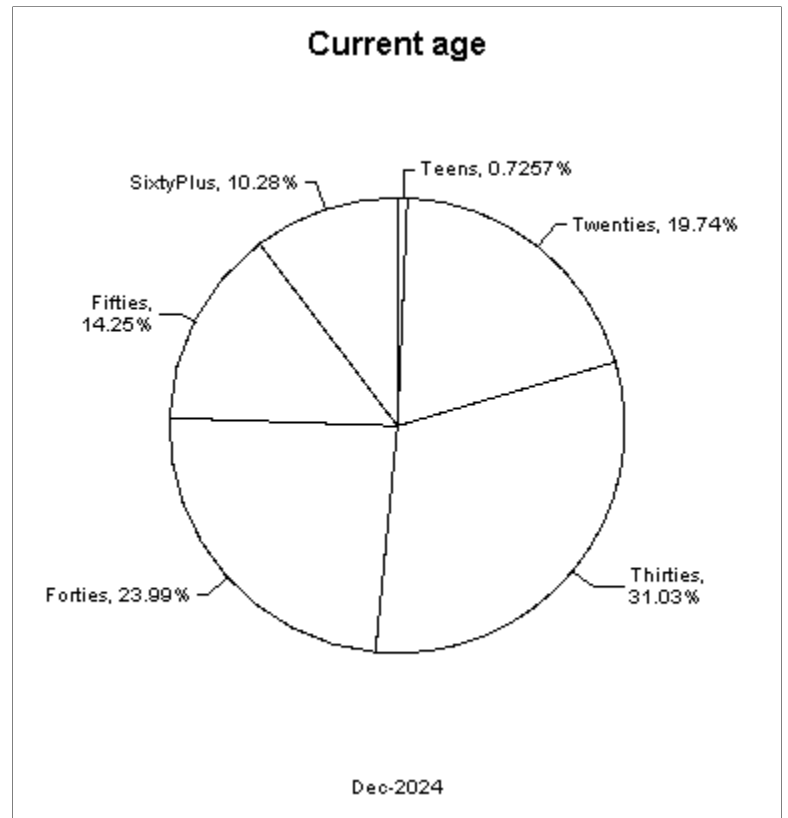
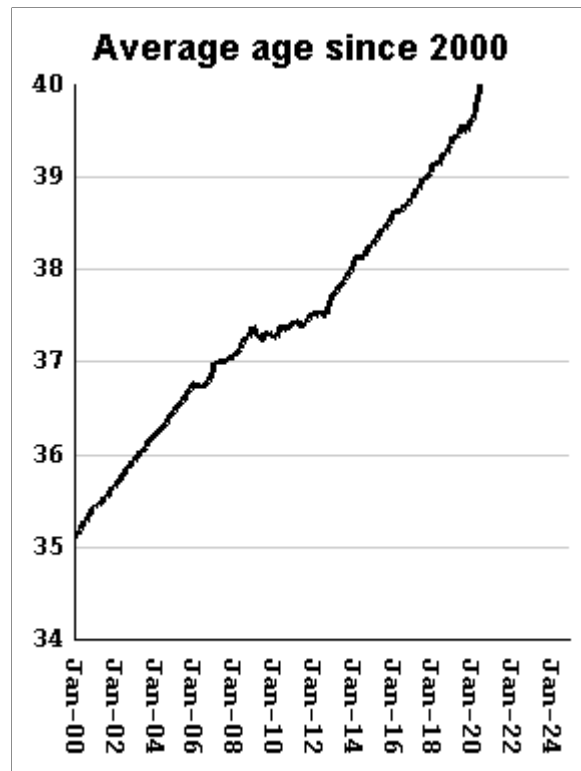
## Inmate subpopulation counts and percentages, for the past 48 months

Month	Methamphetamine						1st Incar Non-Violent		Seven Deadly Sins	
	Total Number	Total Percent	White Number	White Percent	Non White Number	Non White Percent	Number	Percent	Number	Percent
Jan-21	6062	13.20%	4527	74.68%	1542	25.44%	4766	10.38%	17173	37.38%
Feb-21	6039	13.29%	4524	74.91%	1572	26.03%	4679	10.30%	17079	37.58%
Mar-21	6099	13.44%	4510	73.95%	1596	26.17%	4624	10.19%	17029	37.51%
Apr-21	5840	13.17%	4310	73.80%	1537	26.32%	4423	9.97%	16952	38.23%
May-21	6182	13.69%	4610	74.57%	1642	26.56%	4663	10.33%	16951	37.54%
Jun-21	6446	14.04%	4757	73.80%	1729	26.82%	4783	10.42%	17000	37.02%
Jul-21	6664	14.33%	4893	73.42%	1778	26.68%	4867	10.47%	17051	36.67%
Aug-21	6741	14.45%	4949	73.42%	1808	26.82%	4904	10.51%	17025	36.49%
Sep-21	6809	14.56%	4988	73.26%	1828	26.85%	4938	10.56%	17022	36.39%
Oct-21	6833	14.60%	5006	73.26%	1834	26.84%	4936	10.55%	16988	36.30%
Nov-21	6898	14.70%	5058	73.33%	1856	26.91%	4990	10.64%	16992	36.22%
Dec-21	6915	14.70%	5064	73.23%	1858	26.87%	5032	10.69%	17009	36.15%
Jan-22	6839	14.65%	5016	73.34%	1858	27.17%	4979	10.66%	16951	36.30%
Feb-22	6868	14.70%	5042	73.41%	1884	27.43%	4995	10.69%	16949	36.27%
Mar-22	6990	14.84%	5076	72.62%	1921	27.48%	5100	10.82%	16978	36.04%
Apr-22	7013	14.86%	5091	72.59%	1929	27.51%	5142	10.90%	16985	36.00%
May-22	7054	14.93%	5117	72.54%	1961	27.80%	5123	10.84%	17004	35.99%
Jun-22	7176	15.05%	5189	72.31%	1996	27.81%	5214	10.94%	17063	35.79%
Jul-22	7205	15.07%	5197	72.13%	2015	27.97%	5208	10.90%	17048	35.66%
Aug-22	7260	15.18%	5251	72.33%	2038	28.07%	5242	10.96%	17043	35.64%
Sep-22	7289	15.21%	5232	71.78%	2063	28.30%	5229	10.91%	17071	35.63%
Oct-22	7295	15.22%	5258	72.08%	2068	28.35%	5256	10.97%	17059	35.60%
Nov-22	7331	15.21%	5307	72.39%	2067	28.20%	5284	10.96%	17104	35.48%
Dec-22	7364	15.18%	5303	72.01%	2067	28.07%	5348	11.02%	17124	35.29%
Jan-23	7420	15.26%	5335	71.90%	2105	28.37%	5366	11.03%	17122	35.20%
Feb-23	7484	15.33%	5369	71.74%	2135	28.53%	5396	11.05%	17166	35.15%
Mar-23	7562	15.38%	5418	71.65%	2150	28.43%	5485	11.16%	17185	34.96%
Apr-23	7557	15.37%	5424	71.77%	2139	28.30%	5488	11.16%	17176	34.94%
May-23	7428	15.17%	5334	71.81%	2124	28.59%	5355	10.94%	17208	35.15%
Jun-23	7432	15.10%	5309	71.43%	2129	28.65%	5346	10.86%	17257	35.06%
Jul-23	7494	15.18%	5367	71.62%	2168	28.93%	5397	10.93%	17278	35.00%
Aug-23	7512	15.19%	5335	71.02%	2182	29.05%	5415	10.95%	17295	34.97%
Sep-23	7513	15.14%	5333	70.98%	2184	29.07%	5449	10.98%	17313	34.89%
Oct-23	7609	15.23%	5400	70.97%	2222	29.20%	5541	11.09%	17324	34.68%
Nov-23	7689	15.25%	5446	70.83%	2247	29.22%	5630	11.17%	17355	34.43%
Dec-23	7669	15.20%	5431	70.82%	2242	29.23%	5610	11.12%	17363	34.42%
Jan-24	7655	15.17%	5417	70.76%	2265	29.59%	5627	11.15%	17354	34.38%
Feb-24	7662	15.16%	5400	70.48%	2265	29.56%	5610	11.10%	17390	34.40%
Mar-24	7643	15.07%	5363	70.17%	2283	29.87%	5619	11.08%	17400	34.31%
Apr-24	7681	15.06%	5372	69.94%	2323	30.24%	5644	11.07%	17465	34.24%
May-24	7726	15.09%	5379	69.62%	2350	30.42%	5700	11.14%	17489	34.17%
Jun-24	7704	15.04%	5362	69.60%	2345	30.44%	5684	11.09%	17482	34.12%
Jul-24	7683	14.99%	5334	69.43%	2373	30.89%	5670	11.06%	17465	34.07%
Aug-24	7667	14.95%	5302	69.15%	2367	30.87%	5680	11.08%	17447	34.03%
Sep-24	7683	15.00%	5303	69.02%	2381	30.99%	5680	11.09%	17441	34.05%
Oct-24	7705	14.99%	5324	69.10%	2381	30.90%	5693	11.08%	17458	33.96%
Nov-24	7668	14.93%	5288	68.96%	2380	31.04%	5687	11.07%	17459	34.00%
Dec-24	7673	14.93%	5282	68.84%	2391	31.16%	5677	11.04%	17448	33.95%



## Overview of inmate age statistics, Jan-2000 to Dec-2024

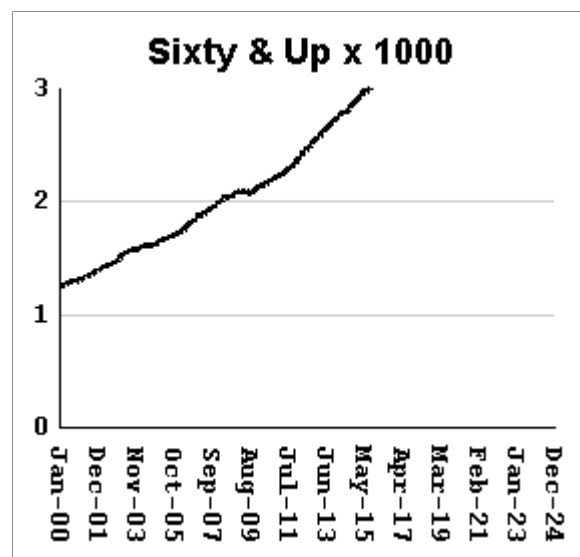
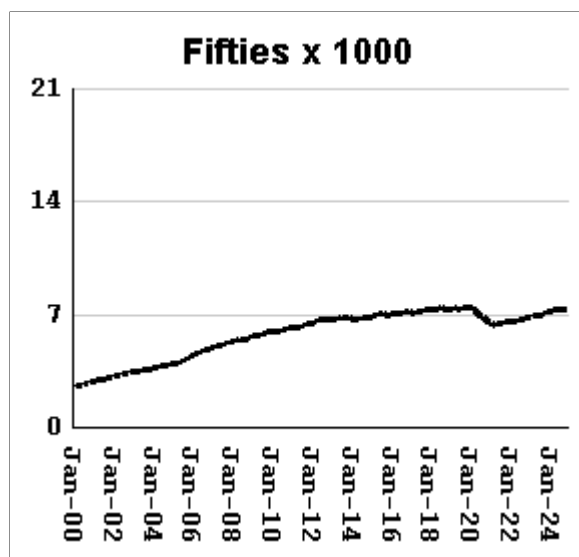
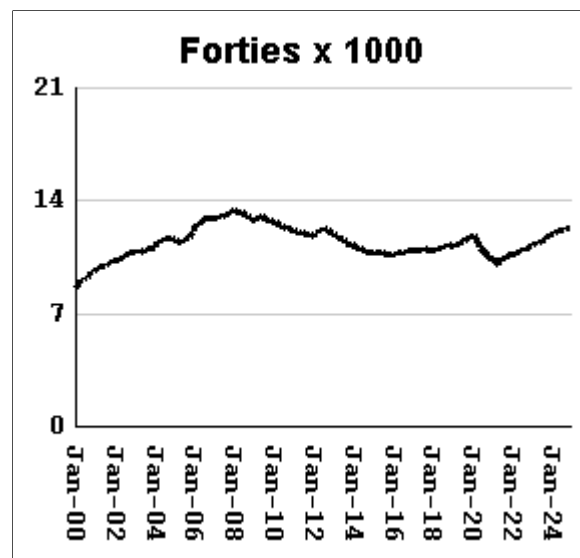
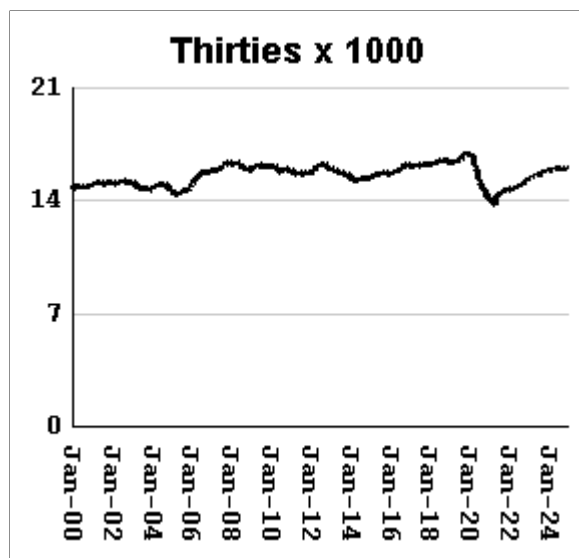
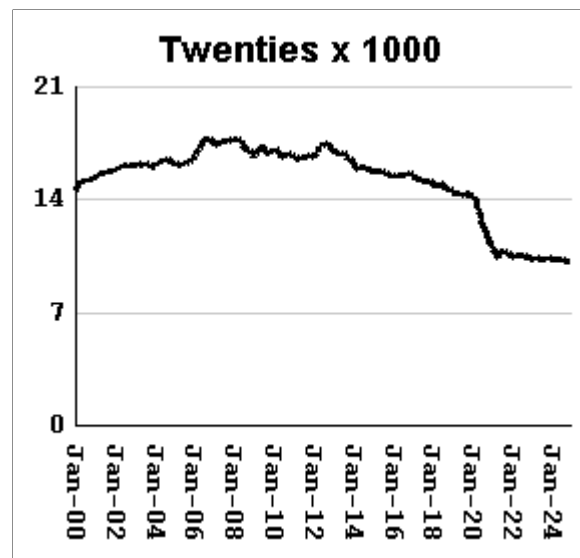
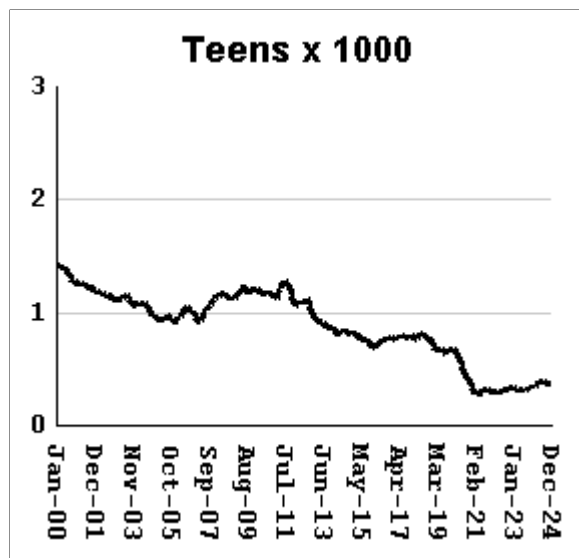
The "aging inmate population" is a concern in correctional systems throughout America, including Georgia. Here, the increase in inmate age is the result of several factors. Teenagers have been steered away from prison by increased usage of probation and other alternatives, at least for their first convictions. And there has been a surge of middle-aged male sex offenders due to the expanding "It's OK to tell" ethos. But most importantly, more severe sentence lengths and release policies have greatly increased the length of time that most offenders -- especially violent ones -- spend in prison, thereby increasing their average age.



Average age of active inmates	RISES BY	.04	from	41.72	to	41.76
Number in their teens	RISES BY	1	from	372	to	373
Percentage in their teens	RISES BY	.01%	from	.72%	to	0.73%
Number in their twenties	falls by	7	from	10,151	to	10,144
Percentage in their twenties	falls by	0.03%	from	19.77%	to	19.74%
Number in their thirties	falls by	44	from	15,991	to	15,947
Percentage in their thirties	falls by	0.11%	from	31.14%	to	31.03%
Number in their forties	RISES BY	43	from	12,286	to	12,329
Percentage in their forties	RISES BY	0.07%	from	23.92%	to	23.99%
Number in their fifties	RISES BY	38	from	7284	to	7,322
Percentage in their fifties	RISES BY	0.07%	from	14.18%	to	14.25%
Number age sixty and up	RISES BY	16	from	5267	to	5,283
Percentage age sixty and up	RISES BY	.02%	from	10.26%	to	10.28%

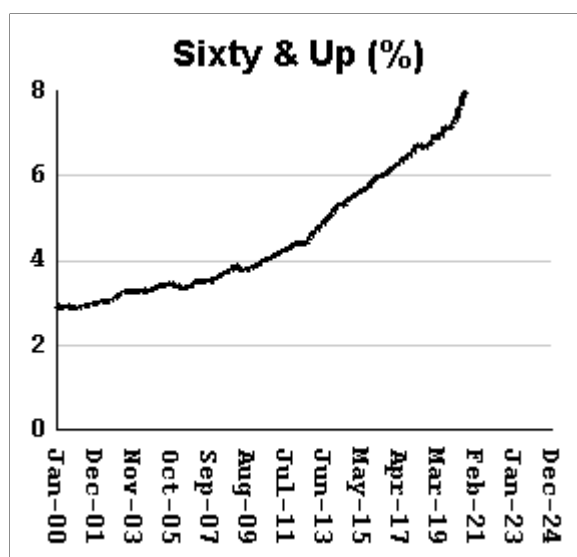
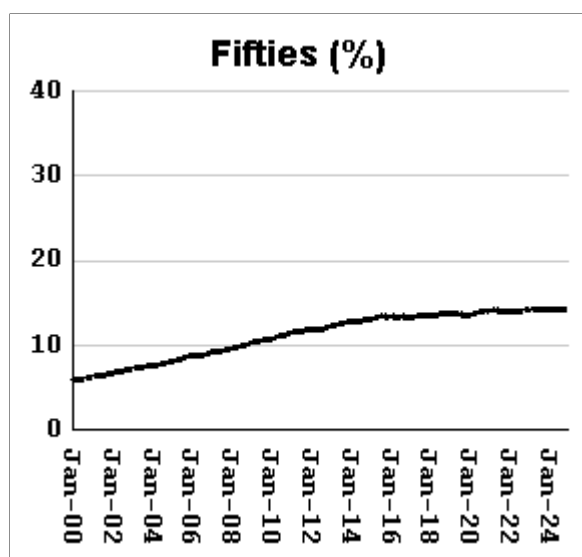
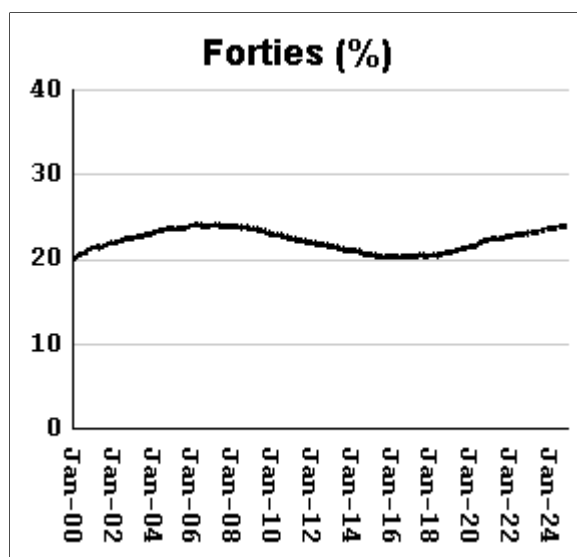
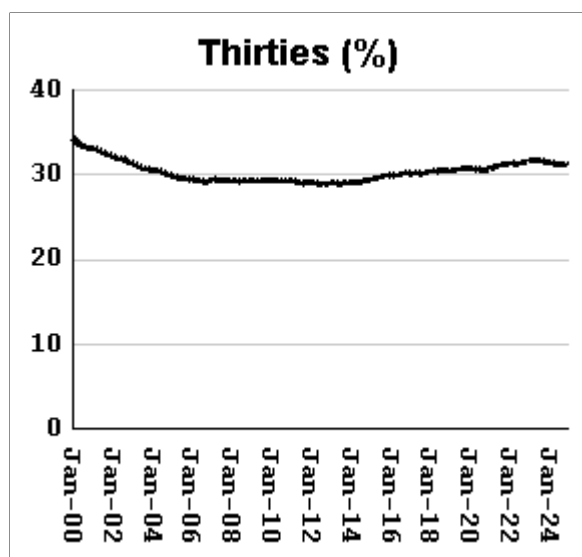
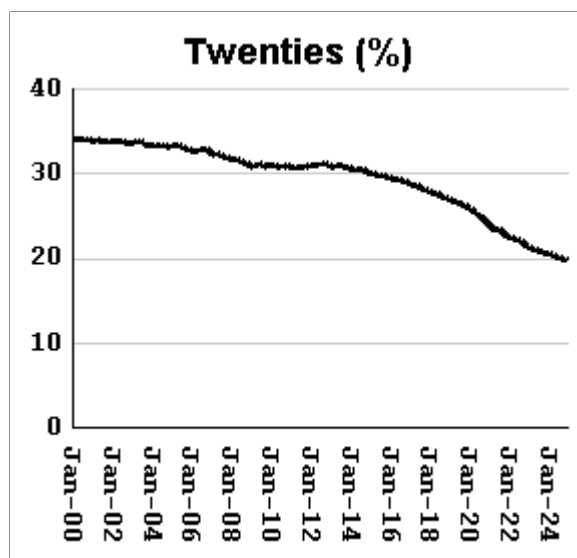
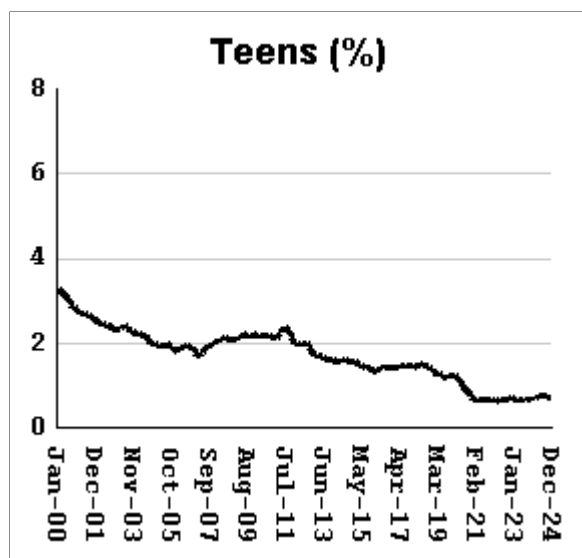
# Monthly counts of inmates by age group, Jan-2000 to Dec-2024

Y-axis of Twenties/Thirties/Forties/Fifties runs from 0 to 21,000. Y-axis of Teens/Sixty+ runs from 0 to 3,000.



# Monthly percentages of inmates by age group, Jan-2000 to Dec-2024

Y-axis of Twenties/Thirties/Forties/Fifties runs from 0% to 40%. Y-axis of Teens/Sixty+ runs from 0% to 8%

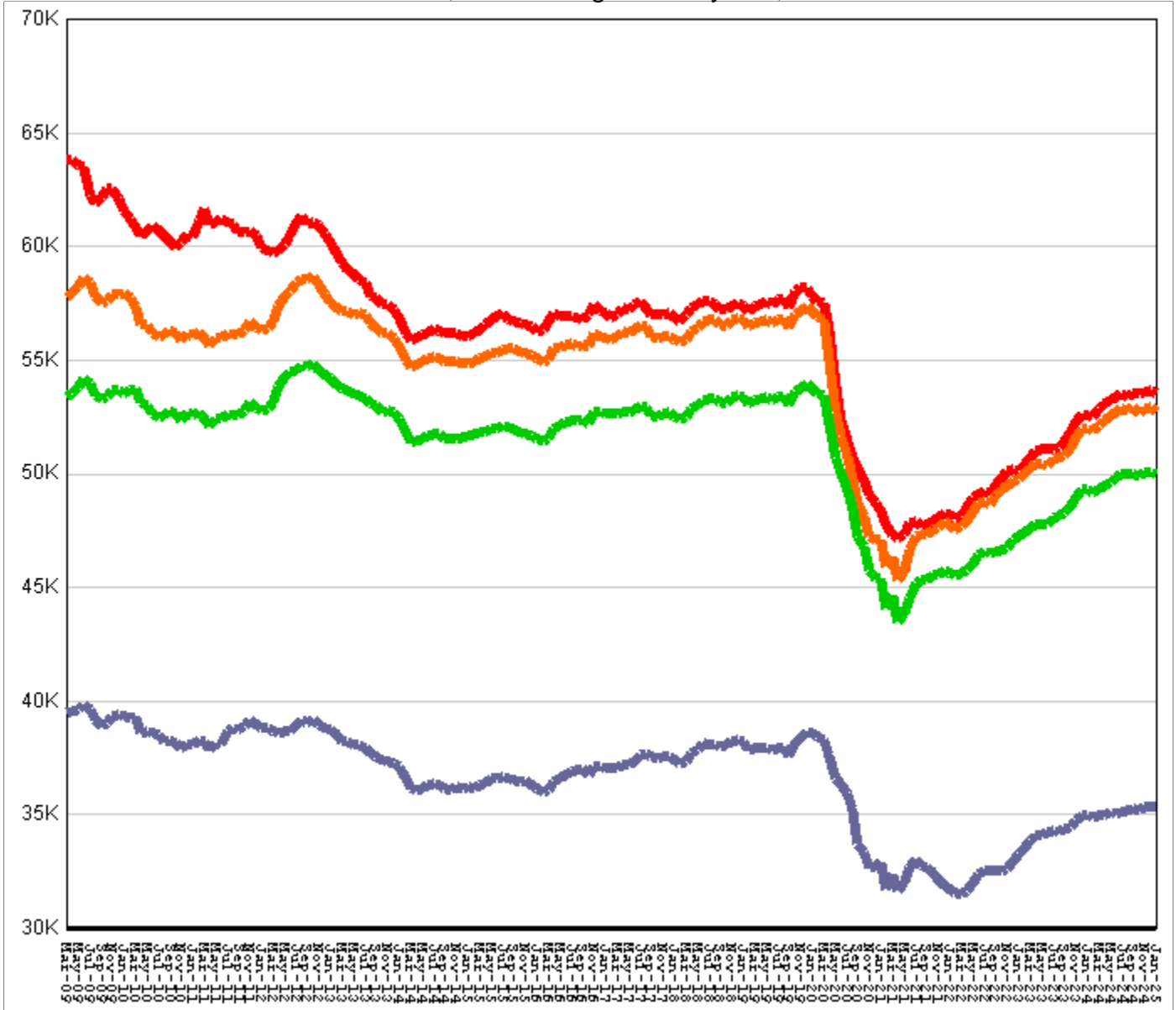


## Inmate counts & percentages by age, for past 48 months

Month	Avg Age	Teens		Twenties		Thirties		Forties		Fifties		Sixty & Up	
		Num-ber	Per-cent	Num-ber	Per-cent	Num-ber	Per-cent	Num-ber	Per-cent	Num-ber	Per-cent	Num-ber	Per-cent
Jan-21	40.52	305	0.66%	10948	23.83%	14058	30.60%	10262	22.34%	6467	14.08%	3910	8.51%
Feb-21	40.56	292	0.64%	10791	23.74%	14070	30.96%	10261	22.58%	6422	14.13%	3895	8.57%
Mar-21	40.6	297	0.65%	10662	23.49%	13999	30.84%	10172	22.41%	6370	14.03%	3909	8.61%
Apr-21	40.72	273	0.62%	10312	23.26%	13640	30.76%	9961	22.46%	6278	14.16%	3892	8.78%
May-21	40.65	290	0.64%	10581	23.43%	14017	31.04%	10173	22.53%	6370	14.11%	3945	8.74%
Jun-21	40.62	308	0.67%	10777	23.47%	14242	31.02%	10280	22.39%	6447	14.04%	4002	8.72%
Jul-21	40.61	317	0.68%	10852	23.34%	14426	31.02%	10383	22.33%	6491	13.96%	4045	8.70%
Aug-21	40.64	318	0.68%	10797	23.14%	14524	31.13%	10471	22.45%	6511	13.96%	4068	8.72%
Sep-21	40.67	318	0.68%	10739	22.96%	14594	31.20%	10494	22.43%	6520	13.94%	4123	8.81%
Oct-21	40.71	300	0.64%	10640	22.73%	14644	31.29%	10574	22.59%	6524	13.94%	4133	8.83%
Nov-21	40.72	300	0.64%	10628	22.65%	14702	31.33%	10651	22.70%	6532	13.92%	4149	8.84%
Dec-21	40.75	303	0.64%	10599	22.53%	14731	31.31%	10688	22.72%	6564	13.95%	4177	8.88%
Jan-22	40.81	294	0.63%	10476	22.44%	14639	31.35%	10641	22.79%	6569	14.07%	4184	8.96%
Feb-22	40.83	299	0.64%	10478	22.42%	14675	31.40%	10666	22.82%	6567	14.05%	4204	9.00%
Mar-22	40.82	296	0.63%	10525	22.34%	14766	31.34%	10729	22.77%	6577	13.96%	4233	8.98%
Apr-22	40.86	286	0.61%	10517	22.29%	14760	31.28%	10785	22.86%	6599	13.99%	4249	9.00%
May-22	40.89	283	0.60%	10501	22.23%	14811	31.35%	10818	22.90%	6600	13.97%	4285	9.07%
Jun-22	40.88	308	0.65%	10587	22.20%	14926	31.30%	10928	22.92%	6631	13.91%	4312	9.04%
Jul-22	40.92	317	0.66%	10542	22.05%	14969	31.32%	10970	22.95%	6673	13.96%	4339	9.08%
Aug-22	40.95	320	0.67%	10510	21.98%	15018	31.40%	11012	23.03%	6710	14.03%	4380	9.16%
Sep-22	41	317	0.66%	10428	21.77%	15041	31.39%	10983	22.92%	6738	14.06%	4412	9.21%
Oct-22	41.02	323	0.67%	10369	21.64%	15127	31.57%	11038	23.03%	6753	14.09%	4430	9.24%
Nov-22	41.04	335	0.69%	10392	21.56%	15230	31.59%	11140	23.11%	6800	14.11%	4475	9.28%
Dec-22	41.07	342	0.70%	10353	21.34%	15313	31.56%	11162	23.00%	6852	14.12%	4508	9.29%
Jan-23	41.1	330	0.68%	10330	21.24%	15393	31.65%	11200	23.03%	6872	14.13%	4551	9.36%
Feb-23	41.12	319	0.65%	10332	21.16%	15461	31.66%	11291	23.12%	6876	14.08%	4602	9.42%
Mar-23	41.12	319	0.65%	10385	21.13%	15550	31.64%	11379	23.15%	6925	14.09%	4603	9.36%
Apr-23	41.15	309	0.63%	10377	21.11%	15551	31.64%	11388	23.17%	6928	14.09%	4611	9.38%
May-23	41.17	315	0.64%	10332	21.11%	15554	31.77%	11363	23.21%	6920	14.14%	4626	9.45%
Jun-23	41.2	316	0.64%	10305	20.94%	15619	31.74%	11394	23.15%	6938	14.10%	4649	9.45%
Jul-23	41.23	322	0.65%	10316	20.89%	15691	31.78%	11505	23.30%	6976	14.13%	4684	9.49%
Aug-23	41.29	308	0.62%	10271	20.77%	15631	31.61%	11540	23.34%	6976	14.11%	4730	9.57%
Sep-23	41.31	318	0.64%	10285	20.73%	15649	31.54%	11604	23.39%	7002	14.11%	4766	9.60%
Oct-23	41.33	335	0.67%	10297	20.62%	15760	31.55%	11731	23.49%	7051	14.12%	4814	9.64%
Nov-23	41.35	336	0.67%	10390	20.61%	15860	31.46%	11861	23.53%	7118	14.12%	4850	9.62%
Dec-23	41.38	345	0.68%	10353	20.53%	15838	31.40%	11906	23.60%	7149	14.17%	4853	9.62%
Jan-24	41.4	350	0.69%	10336	20.48%	15915	31.53%	11918	23.61%	7180	14.23%	4874	9.66%
Feb-24	41.44	344	0.68%	10286	20.35%	15887	31.43%	11948	23.63%	7192	14.23%	4900	9.69%
Mar-24	41.47	351	0.69%	10298	20.31%	15907	31.36%	11996	23.65%	7229	14.25%	4938	9.74%
Apr-24	41.49	369	0.72%	10335	20.26%	15966	31.30%	12114	23.75%	7271	14.26%	4984	9.77%
May-24	41.52	382	0.75%	10330	20.18%	16003	31.26%	12137	23.71%	7304	14.27%	5033	9.83%
Jun-24	41.55	395	0.77%	10317	20.14%	16017	31.26%	12144	23.70%	7281	14.21%	5088	9.93%
Jul-24	41.59	393	0.77%	10301	20.10%	16045	31.30%	12224	23.85%	7291	14.22%	5136	10.02%
Aug-24	41.62	380	0.74%	10234	19.96%	16024	31.25%	12226	23.84%	7271	14.18%	5141	10.03%
Sep-24	41.66	379	0.74%	10189	19.89%	15958	31.16%	12249	23.91%	7281	14.21%	5164	10.08%
Oct-24	41.68	377	0.73%	10219	19.88%	16002	31.13%	12254	23.84%	7318	14.24%	5231	10.18%
Nov-24	41.72	372	0.72%	10151	19.77%	15991	31.14%	12286	23.92%	7284	14.18%	5267	10.26%
Dec-24	41.76	373	0.73%	10144	19.74%	15947	31.03%	12329	23.99%	7322	14.25%	5283	10.28%

## All housed offenders under GDC jurisdiction

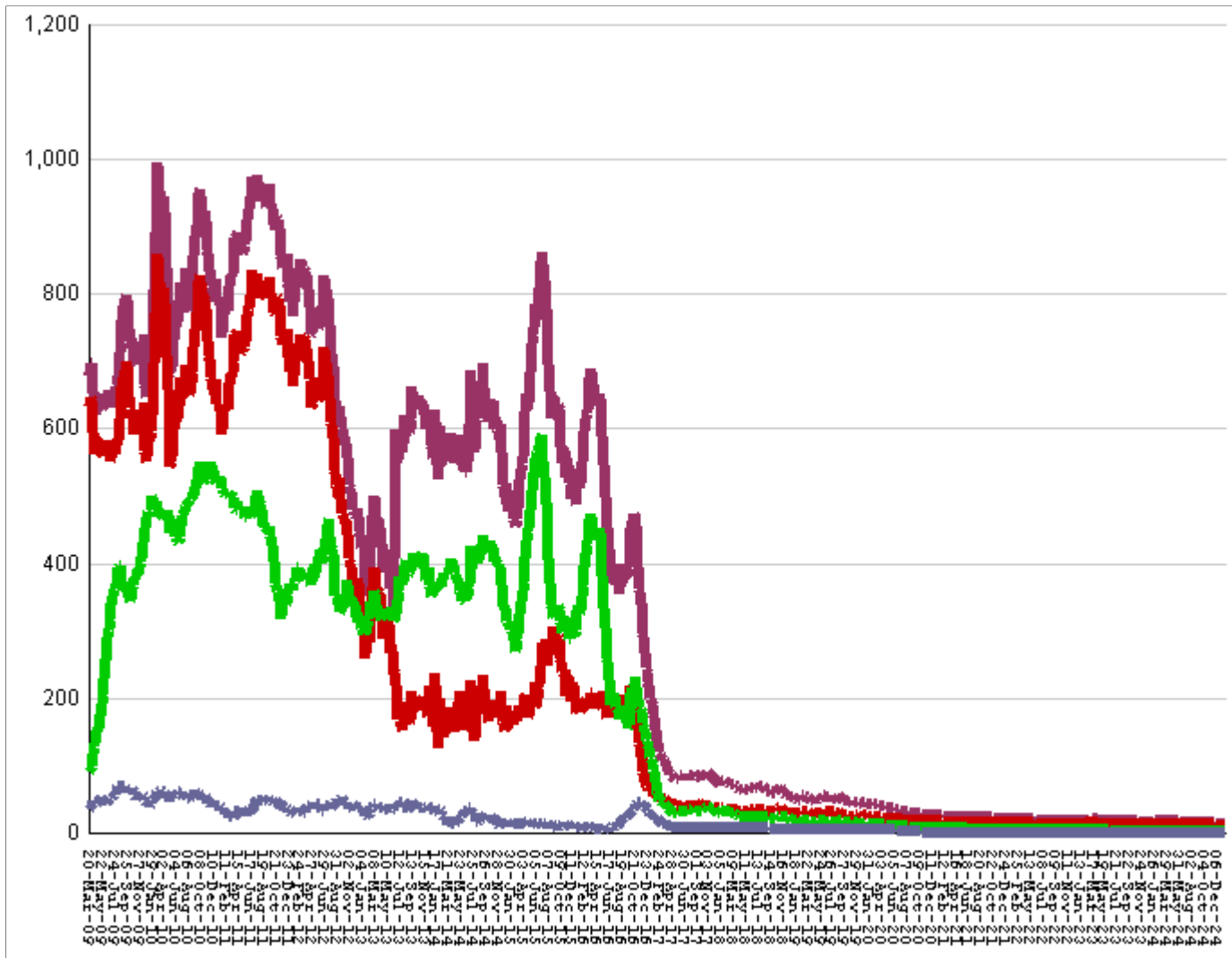
March 20, 2009 through January 24, 2025



<b>All in bed + probs in jail + backlog</b>	<b>fall by</b>	<b>185</b>	<b>from</b>	<b>53,542</b>	<b>to</b>	<b>53,357</b>
Probationers in jail	....	....	...	14	at	14
Inmate jail backlog	RISES BY	205	from	752	to	957
<b>All in beds: inmate + Prob + parole</b>	<b>fall by</b>	<b>390</b>	<b>from</b>	<b>52,776</b>	<b>to</b>	<b>52,386</b>
Total probationers in beds	fall by	146	from	2,765	to	2,619
Probation detention centers	fall by	97	from	1,309	to	1,212
Probation boot camps	fall by		from		to	
Probation RSAT	fall by	49	from	1456	to	1,407
Parole revocation centers	fall by		from		to	
<b>All in inmate beds: state + other</b>	<b>fall by</b>	<b>244</b>	<b>from</b>	<b>50,011</b>	<b>to</b>	<b>49,767</b>
Other inmate facilities :	fall by	121	from	14,698	to	14,577
Inmate boot camps	...	...	...	1	at	1
Private prisons	fall by	24	from	7553	to	7,529
County prisons	fall by	51	from	4467	to	4,416
Transitional centers	fall by	46	from	2677	to	2,631
<b>In state prisons only</b>	<b>fall by</b>	<b>123</b>	<b>from</b>	<b>35,313</b>	<b>to</b>	<b>35,190</b>

## Probationers in jail awaiting placement in facilities

March 20, 2009 through January 24, 2025



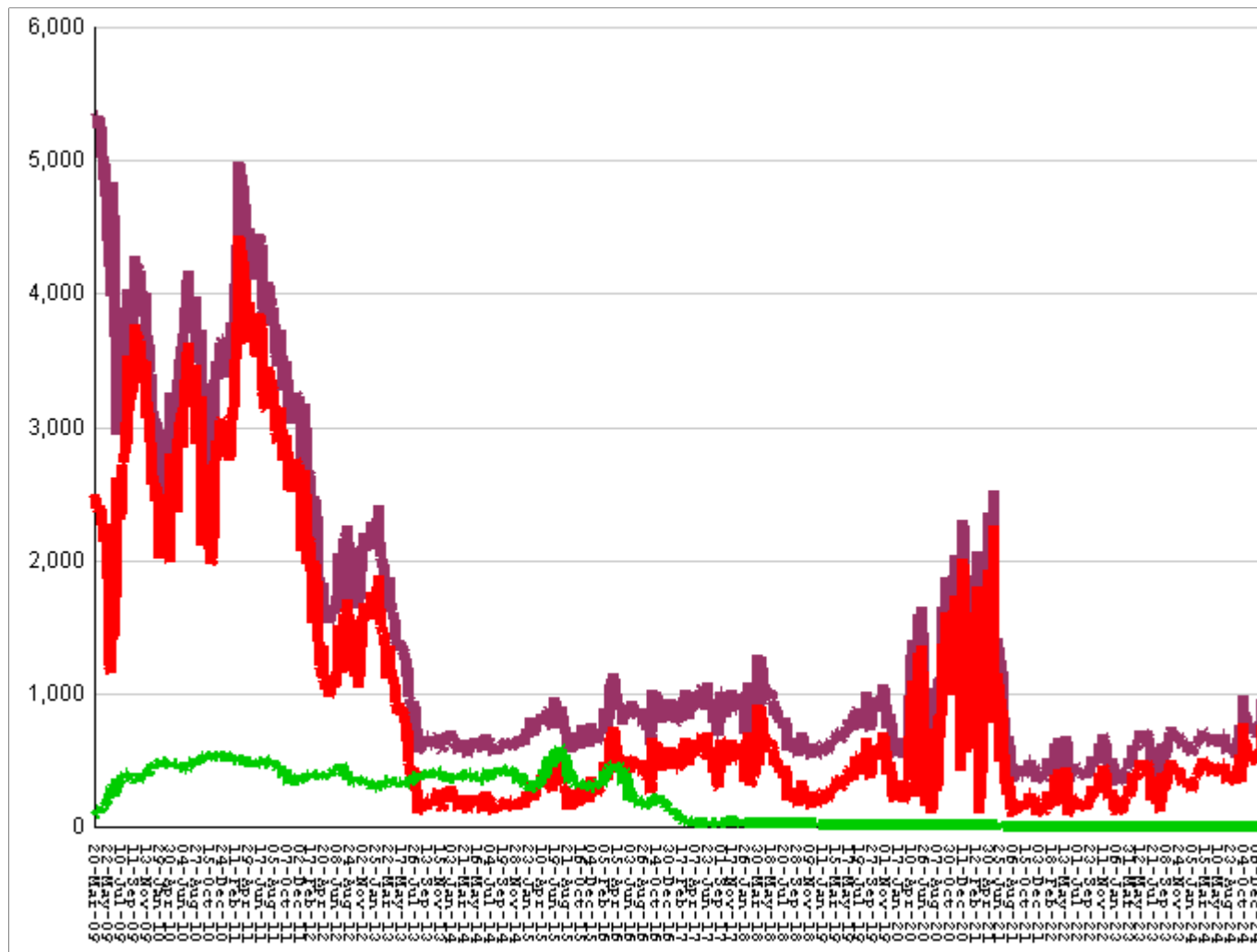
This graph shows, for each Friday since March 20 2009, the number of sentenced felony probationers who were waiting in jail for placement in facilities that GDC operates for housing probationers -- detention centers, probation residential substance abuse treatment (RSAT) centers, and probation boot camps. Counts include both those offenders sentenced directly from court, and those whose street probation was revoked.

Total probationers waiting in jail	...	...	...	level	at	14
... waiting for detention centers	...	...	...	level	at	11
... waiting for probation RSAT	...	...	...	level	at	2
... waiting for probation boot camps	...	...	...	level	at	1

The highest number of probationers waiting in jail was	994	on	05-MAR-10
... highest number waiting for detention centers was	859	on	05-MAR-10
... highest number waiting for probation RSAT was	592	on	10-JUL-15
... highest number waiting for probation boot camps was	70	on	18-SEP-09

## State inmates in jail awaiting placement in facilities

March 20, 2009 through January 24, 2025



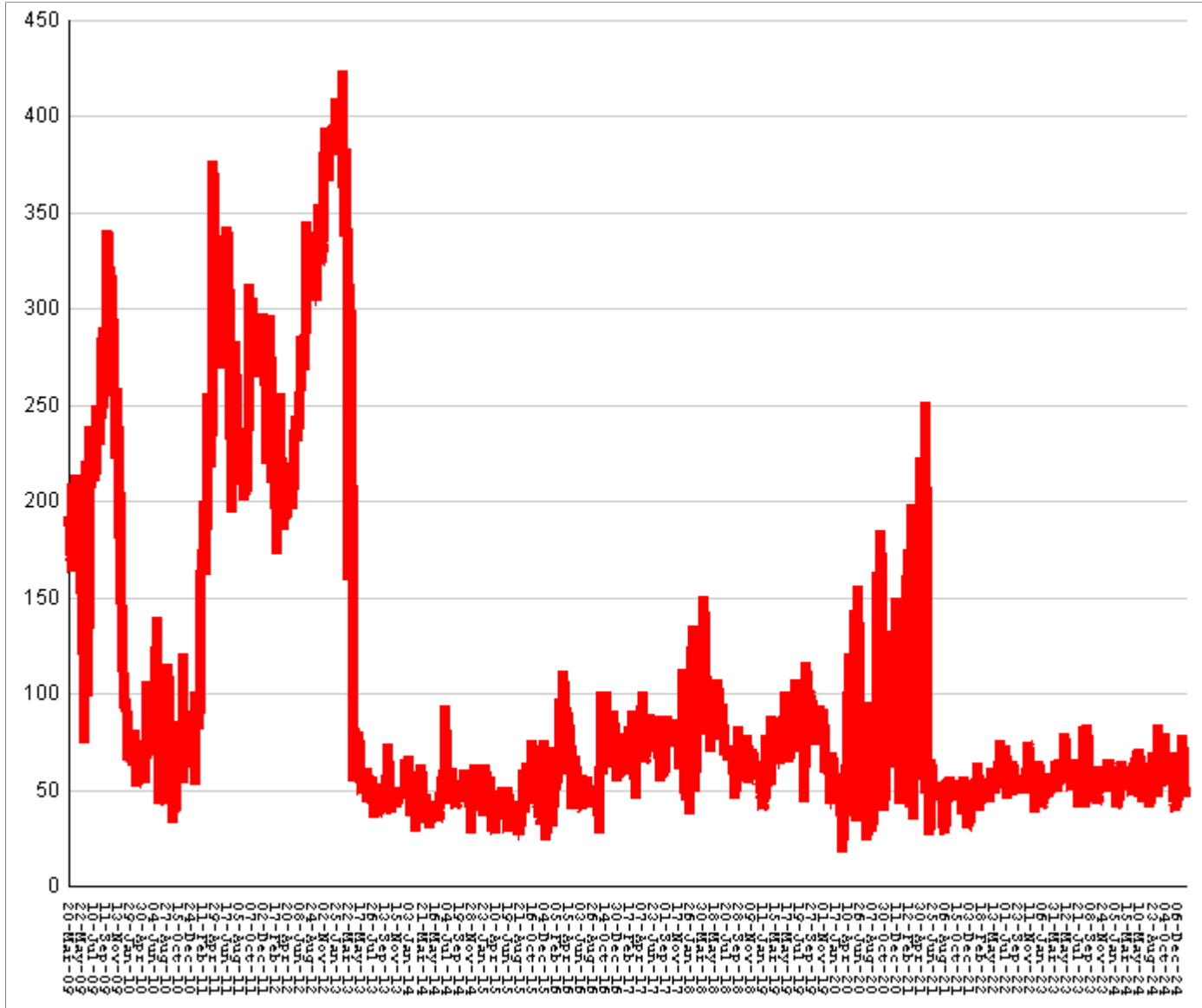
This graph shows, for each Friday since March 2009, the number of prisoners, probationers, and parolees in local jails who have been sentenced or revoked to state prison and whose documents have been received and verified by GDC. Most are almost immediately assigned to a diagnostic center, and are designated as in "admission processing". Of those a few hundred may be in the "transportation delayed" category because there is no room in the assigned diagnostic center, or because the inmate is being held for medical reasons, or for other court proceedings, or other reasons. Those remaining are "ready to be picked up".

<b>Total state inmates waiting in jail</b>	<b>RISE BY</b>	<b>205</b>	<b>from</b>	<b>752</b>	<b>to</b>	<b>957</b>
<b>... not yet assigned to a diagnostic center</b>	<b>fall by</b>	<b>2</b>	<b>from</b>	<b>22</b>	<b>to</b>	<b>20</b>
<b>... total "in admission processing"</b>	<b>RISE BY</b>	<b>207</b>	<b>from</b>	<b>730</b>	<b>to</b>	<b>937</b>
<b>... with "transportation delayed"</b>	<b>...</b>	<b>...</b>	<b>...</b>	<b>level</b>	<b>at</b>	<b>182</b>
<b>... ready to be picked up</b>	<b>RISE BY</b>	<b>207</b>	<b>from</b>	<b>548</b>	<b>to</b>	<b>755</b>

<b>The highest number of state inmates waiting in jail was</b>	<b>5338</b>	<b>on</b>	<b>27-MAR-09</b>
<b>... highest number not asg to a diagnostic center was</b>	<b>2881</b>	<b>on</b>	<b>12-JUN-09</b>
<b>... highest number in admission processing was</b>	<b>4916</b>	<b>on</b>	<b>25-MAR-11</b>
<b>... highest number with transportation delayed was</b>	<b>645</b>	<b>on</b>	<b>14-JAN-11</b>
<b>... highest number ready to be pickup was</b>	<b>4435</b>	<b>on</b>	<b>25-MAR-11</b>

## Female state inmates in jail awaiting pickup

March 20, 2009 through January 24, 2025



This graph shows, for each Friday since March 2009, the number of female state prisoners in local jails who were assigned to diagnostic centers but had not yet been picked up.

Female state inmates in jails waiting picked up	RISE BY	25	from	53	to	78
The highest number of female inmates waiting in jail was		424	on	01-FEB-13		
The lowest number of female inmates waiting in jail was		17	on	20-MAR-20		



# Summary of housed prisoners, parolees, and probationers

Week ending	Prison	Parole	Probation			Prison+parole+probation	Jail		Total
	Total inmates	Revocation centers	Prob RSAT	Boot camp	Detention		Inmate backlog	Probationers	Prison+parole+probation+jail
02-Feb-2024	49176		1411		1327	51914	614	18	52546
09-Feb-2024	49108		1408		1335	51851	577	18	52446
16-Feb-2024	49160		1406		1343	51909	598	18	52525
23-Feb-2024	49131		1423		1346	51900	620	18	52538
01-Mar-2024	49200		1449		1358	52007	643	18	52668
08-Mar-2024	49218		1430		1400	52048	673	18	52739
15-Mar-2024	49255		1435		1412	52102	702	18	52822
22-Mar-2024	49304		1417		1404	52125	675	18	52818
29-Mar-2024	49434		1459		1392	52285	722	18	53025
05-Apr-2024	49389		1507		1409	52305	680	18	53003
12-Apr-2024	49458		1454		1406	52318	666	18	53002
19-Apr-2024	49474		1455		1417	52346	692	18	53056
26-Apr-2024	49533		1477		1436	52446	639	18	53103
03-May-2024	49550		1512		1421	52483	660	18	53161
10-May-2024	49492		1504		1422	52418	643	18	53079
17-May-2024	49615		1451		1410	52476	645	18	53139
24-May-2024	49652		1443		1453	52548	688	18	53254
31-May-2024	49785		1467		1444	52696	612	18	53326
07-Jun-2024	49769		1491		1410	52670	608	17	53295
14-Jun-2024	49784		1492		1419	52695	631	17	53343
21-Jun-2024	49907		1472		1410	52789	643	17	53449
28-Jun-2024	49944		1476		1369	52789	687	17	53493
05-Jul-2024	49897		1493		1369	52759	690	16	53465
12-Jul-2024	50027		1472		1392	52891	549	17	53457
19-Jul-2024	50007		1496		1418	52921	588	17	53526
26-Jul-2024	49939		1433		1447	52819	631	17	53467
02-Aug-2024	49931		1424		1438	52793	598	17	53408
09-Aug-2024	49870		1418		1417	52705	526	17	53248
16-Aug-2024	49881		1429		1400	52710	609	17	53336
23-Aug-2024	49950		1453		1388	52791	598	17	53406
30-Aug-2024	50050		1466		1417	52933	598	17	53548
06-Sep-2024	49948		1452		1456	52856	549	17	53422
13-Sep-2024	49996		1457		1449	52902	535	17	53454
20-Sep-2024	50025		1467		1428	52920	660	17	53597
27-Sep-2024	49948		1515		1424	52887	755	17	53659
04-Oct-2024	49700		1465		1324	52489	989	17	53495
11-Oct-2024	49904		1490		1297	52691	857	16	53564
18-Oct-2024	49937		1494		1257	52688	769	16	53473
25-Oct-2024	49914		1461		1245	52620	766	16	53402
01-Nov-2024	49982		1487		1290	52759	760	16	53535
08-Nov-2024	49986		1504		1307	52797	724	15	53536
15-Nov-2024	50025		1480		1374	52879	710	15	53604
22-Nov-2024	50076		1484		1384	52944	710	15	53669
29-Nov-2024	50000		1511		1405	52916	751	15	53682
06-Dec-2024	50030		1493		1392	52915	688	14	53617
13-Dec-2024	50065		1466		1387	52918	711	14	53643
20-Dec-2024	50089		1505		1370	52964	692	14	53670
27-Dec-2024	50093		1487		1357	52937	702	14	53653
03-Jan-2025	50009		1474		1349	52832	794	14	53640
10-Jan-2025	49957		1478		1312	52747	778	14	53539
17-Jan-2025	50011		1456		1309	52776	752	14	53542
24-Jan-2025	49767		1407		1212	52386	957	14	53357

# Offenders housed in facilities for state prisoners

Week ending	In state prisons	In facilities other than state prisons						Total Inmates
		Transition centers	County prisons	Pre-rel centers	Private prisons	Inmate boot camps	Total others	
02-Feb-2024	34889	2224	4509		7554	0	14287	49176
09-Feb-2024	34842	2208	4485		7573	0	14266	49108
16-Feb-2024	34875	2205	4508		7572	0	14285	49160
23-Feb-2024	34855	2215	4481		7580	0	14276	49131
01-Mar-2024	34885	2227	4497		7591	0	14315	49200
08-Mar-2024	34943	2226	4457		7592	0	14275	49218
15-Mar-2024	34936	2264	4446		7609	0	14319	49255
22-Mar-2024	34924	2323	4463		7594	0	14380	49304
29-Mar-2024	34993	2389	4450		7602	0	14441	49434
05-Apr-2024	34968	2415	4435		7571	0	14421	49389
12-Apr-2024	34979	2429	4473		7577	0	14479	49458
19-Apr-2024	34957	2461	4467		7589	0	14517	49474
26-Apr-2024	35020	2512	4410		7591	0	14513	49533
03-May-2024	35061	2528	4395		7566	0	14489	49550
10-May-2024	35022	2558	4364		7548	0	14470	49492
17-May-2024	35118	2584	4358		7555	0	14497	49615
24-May-2024	35109	2638	4355		7550	0	14543	49652
31-May-2024	35123	2674	4440		7548	0	14662	49785
07-Jun-2024	35023	2682	4494		7570	0	14746	49769
14-Jun-2024	34995	2718	4500		7571	0	14789	49784
21-Jun-2024	35048	2737	4524		7598	0	14859	49907
28-Jun-2024	35076	2740	4540		7588	0	14868	49944
05-Jul-2024	35064	2729	4531		7573	0	14833	49897
12-Jul-2024	35172	2754	4521		7580	0	14855	50027
19-Jul-2024	35164	2754	4505		7584	0	14843	50007
26-Jul-2024	35139	2751	4478		7571	0	14800	49939
02-Aug-2024	35134	2752	4502		7543	0	14797	49931
09-Aug-2024	35109	2749	4482		7529	1	14761	49870
16-Aug-2024	35109	2747	4489		7535	1	14772	49881
23-Aug-2024	35149	2756	4507		7537	1	14801	49950
30-Aug-2024	35243	2761	4517		7528	1	14807	50050
06-Sep-2024	35195	2716	4508		7528	1	14753	49948
13-Sep-2024	35217	2752	4493		7533	1	14779	49996
20-Sep-2024	35238	2746	4506		7534	1	14787	50025
27-Sep-2024	35230	2724	4475		7518	1	14718	49948
04-Oct-2024	35111	2663	4437		7488	1	14589	49700
11-Oct-2024	35197	2679	4493		7534	1	14707	49904
18-Oct-2024	35211	2739	4469		7517	1	14726	49937
25-Oct-2024	35182	2745	4466		7520	1	14732	49914
01-Nov-2024	35239	2765	4442		7535	1	14743	49982
08-Nov-2024	35246	2756	4434		7549	1	14740	49986
15-Nov-2024	35323	2747	4403		7551	1	14702	50025
22-Nov-2024	35354	2755	4428		7538	1	14722	50076
29-Nov-2024	35292	2750	4431		7526	1	14708	50000
06-Dec-2024	35285	2756	4451		7537	1	14745	50030
13-Dec-2024	35339	2763	4429		7533	1	14726	50065
20-Dec-2024	35382	2755	4417		7534	1	14707	50089
27-Dec-2024	35380	2734	4433		7545	1	14713	50093
03-Jan-2025	35335	2721	4419		7533	1	14674	50009
10-Jan-2025	35311	2691	4428		7526	1	14646	49957
17-Jan-2025	35313	2677	4467		7553	1	14698	50011
24-Jan-2025	35190	2631	4416		7529	1	14577	49767

## Offenders waiting in local jails for state facilities

Week ending	Probationers waiting in jail				State prisoners wating in jail					Assigned females
	.. for PDCs	.. for RSAT	.. for boot camps	Total	Total backlog	Not yet assigned	In adm process	Delayed transport	Ready for pickup	
02-Feb-2024	14	3	1	18	614	37	577	208	369	50
09-Feb-2024	14	3	1	18	577	37	540	197	343	41
16-Feb-2024	14	3	1	18	598	36	562	199	363	43
23-Feb-2024	14	3	1	18	620	35	585	196	389	53
01-Mar-2024	14	3	1	18	643	40	603	188	415	54
08-Mar-2024	14	3	1	18	673	37	636	185	451	57
15-Mar-2024	14	3	1	18	702	37	665	188	477	52
22-Mar-2024	14	3	1	18	675	37	638	195	443	65
29-Mar-2024	14	3	1	18	722	23	699	192	507	61
05-Apr-2024	14	3	1	18	680	23	657	190	467	49
12-Apr-2024	14	3	1	18	666	22	644	187	457	47
19-Apr-2024	14	3	1	18	692	25	667	185	482	53
26-Apr-2024	14	3	1	18	639	26	613	189	424	58
03-May-2024	14	3	1	18	660	24	636	193	443	69
10-May-2024	14	3	1	18	643	23	620	193	427	71
17-May-2024	14	3	1	18	645	23	622	196	426	57
24-May-2024	14	3	1	18	688	24	664	191	473	67
31-May-2024	14	3	1	18	612	25	587	195	392	63
07-Jun-2024	13	3	1	17	608	25	583	193	390	57
14-Jun-2024	13	3	1	17	631	24	607	188	419	43
21-Jun-2024	13	3	1	17	643	24	619	187	432	58
28-Jun-2024	13	3	1	17	687	26	661	189	472	64
05-Jul-2024	12	3	1	16	690	27	663	193	470	50
12-Jul-2024	13	3	1	17	549	28	521	188	333	41
19-Jul-2024	13	3	1	17	588	28	560	180	380	50
26-Jul-2024	13	3	1	17	631	29	602	183	419	54
02-Aug-2024	13	3	1	17	598	27	571	181	390	59
09-Aug-2024	13	3	1	17	526	28	498	179	319	46
16-Aug-2024	13	3	1	17	609	24	585	184	401	69
23-Aug-2024	13	3	1	17	598	24	574	185	389	61
30-Aug-2024	13	3	1	17	598	25	573	186	387	63
06-Sep-2024	13	3	1	17	549	25	524	182	342	59
13-Sep-2024	13	3	1	17	535	25	510	183	327	56
20-Sep-2024	13	3	1	17	660	26	634	182	452	84
27-Sep-2024	13	3	1	17	755	27	728	184	544	52
04-Oct-2024	13	3	1	17	989	25	964	183	781	79
11-Oct-2024	12	3	1	16	857	26	831	185	646	69
18-Oct-2024	12	3	1	16	769	25	744	188	556	57
25-Oct-2024	12	3	1	16	766	26	740	192	548	57
01-Nov-2024	12	3	1	16	760	25	735	186	549	69
08-Nov-2024	12	2	1	15	724	25	699	189	510	53
15-Nov-2024	12	2	1	15	710	25	685	187	498	53
22-Nov-2024	12	2	1	15	710	24	686	190	496	39
29-Nov-2024	12	2	1	15	751	24	727	187	540	43
06-Dec-2024	11	2	1	14	688	24	664	188	476	48
13-Dec-2024	11	2	1	14	711	21	690	184	506	57
20-Dec-2024	11	2	1	14	692	22	670	180	490	54
27-Dec-2024	11	2	1	14	702	23	679	178	501	41
03-Jan-2025	11	2	1	14	794	22	772	179	593	47
10-Jan-2025	11	2	1	14	778	22	756	180	576	46
17-Jan-2025	11	2	1	14	752	22	730	182	548	53
24-Jan-2025	11	2	1	14	957	20	937	182	755	78