

Friday Report – overview and contents

The pages in The Friday Report are about adult offenders in Georgia’s prisons and jails. They contain statistical snapshots and trends in the populations and movements of offenders in the state prison system, on probation, on parole, and in local jails. Information comes from databases of the Georgia Department of Corrections (GDC) and the Board of Pardons and Paroles, and from data provided by local jailers. Information is summarized into tables in the GDC/Parole Data Warehouse, and is extracted into these pages each Friday. Pages are organized according to the table that supplied the data.

The Monthly Research Table, named “MO_RESRCH” or simply “MO”, contains data about state prisoners, grouped into statistically interesting categories. The table contains one record per month, from January 2000 to the present. Despite its being “monthly”, it is updated weekly, because some data trickles in for several weeks before it becomes stable history.	
Page	Contents
MO-01	Clemencies and maxouts. Monthly graph from 2000 to present shows the monthly departures from prison via actions by the Georgia Parole Board (clemencies), and via service of 100% of the court ordered sentence (maxouts)
MO-02	48 months of releases. Table shows counts and percentages of releases via clemencies and maxouts, with and without probation to follow, for each of the past 48 months.
MO-03	Methamphetamine. Monthly graph from 2000 to present shows admissions, departures, population, and percent of population of inmates with a current offense of methamphetamine possession, sale, manufacturing, or trafficking, and the changing racial composition of the methamphetamine population.
MO-04	Non-violent first incarcerants. Monthly graph from 2000 to present shows admissions, departures, population, and percent of population of inmates without violent or sex crimes, who are serving their first Georgia felony incarceration.
MO-05	Seven Deadly Sins. Monthly graph from 2000 to present shows admissions, departures, population, and percent of population of inmates convicted of kidnapping, armed robbery, rape, aggravated sodomy, aggravated sexual battery, and aggravated child molestation, for whom especially severe penalties are prescribed.
MO-06	48 months of inmate subpopulations. Table shows number and percentage of white and non-white inmates with methamphetamine offenses, and non-violent first incarcerants, and inmates convicted of the Seven Deadly Sins.
MO-07	Inmate age overview. Line graph shows the average age of the inmate population, by month from 2000 to the present. Pie chart shows the number of currently active inmates in their teens, twenties, thirties, forties, fifties, and age sixty+.
MO-08	Counts by age group. Graphs show the count, by month from 2000 to the present, of inmates in their teens, twenties, thirties, forties, fifties, and age sixty+.
MO-09	Percentages by age group. Graphs show the <i>percentages</i> , by month from 2000 to the present, of inmates in their teens, twenties, thirties, forties, fifties, and age sixty+.
MO-10	48 months of inmate ages. Table shows average age of the standing population, and counts and percentages of teens, twenties, thirties, forties, fifties, and sixty+, for each of the past 48 months.

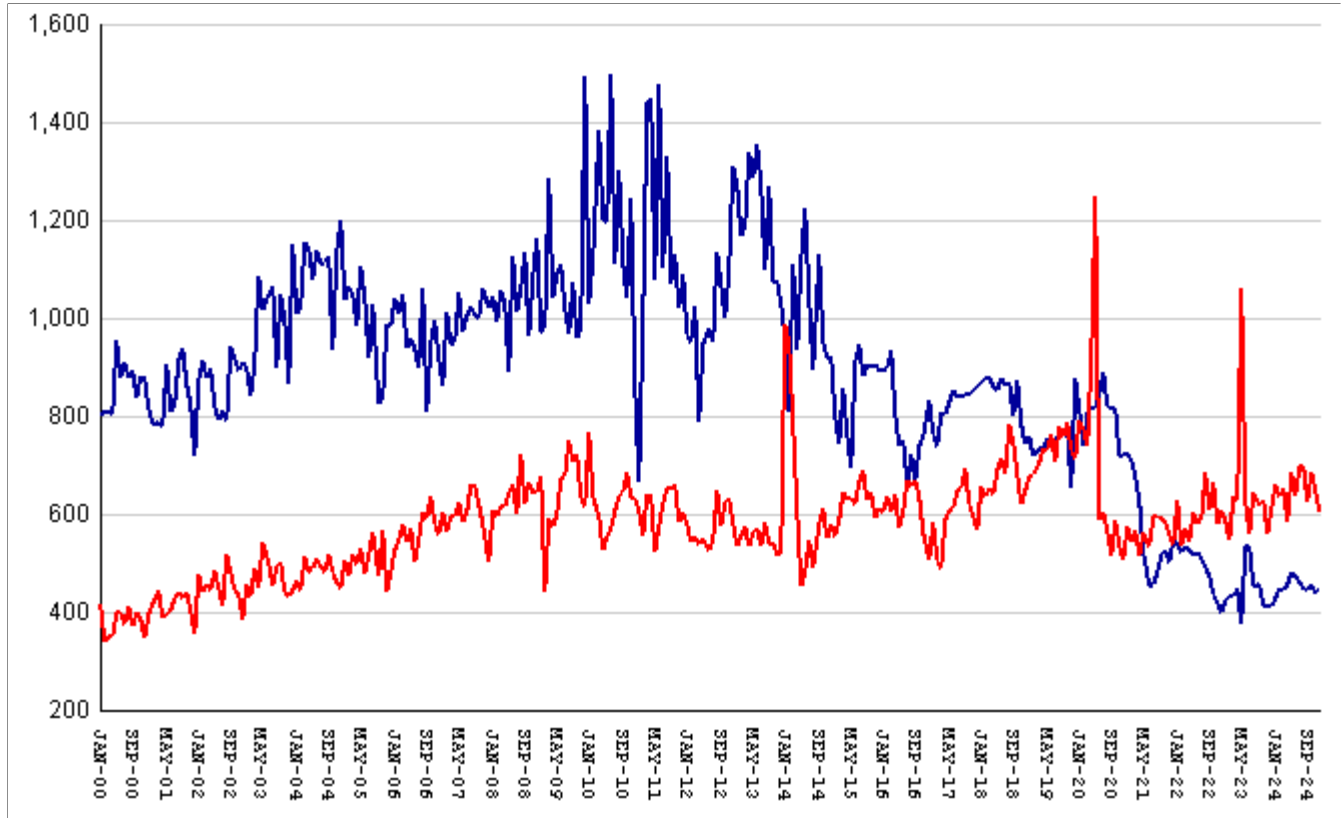
Friday Report – overview and contents (*continued*)

The MSR Table is based on the Management Summary Report (MSR), a snapshot report posted each week in GDC's Scribe database. MSR_RESRCH gathers that data into weekly trends, with one record for each Friday since March 20th, 2009.	
Page	Contents
MSR-01	All housed offenders. Weekly graph from March 20, 2009 to present, showing counts of inmates in state prisons, transitional centers, county prisons, private prisons, inmate boot camps, parole revocation centers, probation Residential Substance Abuse Treatment (RSAT), probation boot camps, probation detention centers, plus the inmate jail backlog and probationers in jail waiting for state facilities.
MSR-02	Probationers in jail. Weekly graph from March 20, 2009 to present, showing counts of probationers in local jails awaiting placement in probation detention centers, probation RSAT centers, and probation boot camps.
MSR-03	State inmates in jail. Weekly graph from March 20, 2009 to present, showing counts of state inmates in local jails awaiting placement in state prison facilities – including those who have not yet been assigned to a diagnostic center, those whose transportation has been delayed for some reason, and those who are ready to be picked up.
MSR-04	Female state inmates in jail. Weekly graph from March 20, 2009 to present, showing counts of female state inmates awaiting placement in a state prison for females.
MSR-05	52-week table: housed offenders. Data for each of the past 52 weeks, showing total prison inmates, parolees in revocation centers, probationers in RSAT/boot camp/detention centers, inmate jail backlog, probationers in jail waiting for facilities, with subtotals.
MSR-06	52-week table: state prisoners. Data for each of the past 52 weeks, showing inmates in state prisons, transition centers, county prisons, pre-release centers, private prisons, and inmate boot camps, with subtotals.
MSR-07	52-week table: waiting in jail. Data for each of the past 52 weeks, showing probationers waiting for detention centers, RSAT, and boot camp; and state prisoners not yet assigned to diagnostic centers, in admission process, with delayed transport, and ready for pickup, with subtotals.

The DCA table consists mainly of data submitted from each of Georgia's 140+ local jails, via the Georgia Crime Information Center (GCIC) to the Georgia Department of Community Affairs (DCA), which publishes its <u>County Jail Inmate Population Report</u> on its web site each month. GDC has collected summary statewide data from this report every month since its inception in January, 1993. The table also contains the inmate jail backlog as computed by GDC for the last Friday of each month, for comparison with the jailers' count of state inmates. Although nominally a monthly table, DCA_RESRCH is updated weekly to insure that the DCA data is correctly synchronized with the GDC jail backlog data.	
Page	Contents
DCA-01	Jail composition. Monthly graph from 1993 to the present shows trends in the numbers of unsentenced inmates, state inmates, county inmates, and other inmates.
DCA-02	Two views of jail backlog. Monthly graph from 1993 to present compares jailers' count of "state inmates" with GDC's count of the "inmate jail backlog", and explains that both are valid counts of different phenomena.
DCA-03	48-month table: local jails. Data from Georgia jailers for each of the past 48 months, showing total jail population, capacity, utilization, and number and percent of unsentenced inmates, state inmates, county inmates, and other inmates.

Releases by clemency and maxout, Jan-2000 to Dec-2024

There are two main ways of being released from a Georgia prison -- by actions of the Board of Pardons and Paroles ("Clemencies") and by service of 100% of the court-ordered sentences ("Maxouts"). "Clemency" includes paroles, reprieves, commutations, and transfer to other confinement prior to expiration of sentence. "Other Releases" includes deaths, and sentences modified or overturned by the courts. Clemencies and maxouts may or may not be followed by periods of probation.



A. Clemency with probation to follow	falls by	1	from	390	to	389
B. Clemency only	RISES BY	8	from	52	to	60
C. Maxout with probation to follow	falls by	36	from	591	to	555
D. Maxout only (unsupervised)	falls by	8	from	56	to	48
E. Other releases	RISES BY	10	from	23	to	33
F. Total releases (A+B+C+D+E)	falls by	27	from	1112	to	1085
G. Total clemencies (A+B) (top line)	RISES BY	7	from	442	to	449
H. Total maxouts(C+D) (bottom line)	falls by	44	from	647	to	603
I. % of releases by clemency (G/F)	RISES BY	1.63%	from	39.75%	to	41.38%
J. % of releases by maxout (H/F)	falls by	2.6%	from	58.18%	to	55.58%
K. Supervised releases (A+B+C)	falls by	29	from	1033	to	1004
L. % unsupervised releases (D/F)	falls by	.62%	from	5.04%	to	4.42%
M. % supervised releases (K/F)	falls by	.37%	from	92.9%	to	92.53%

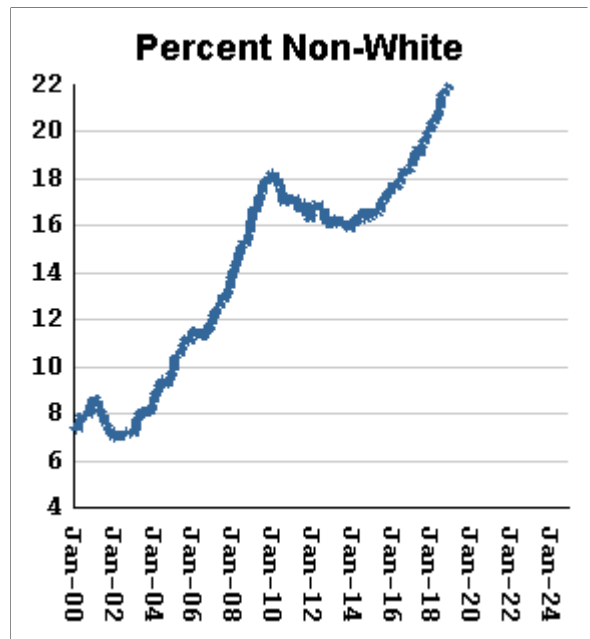
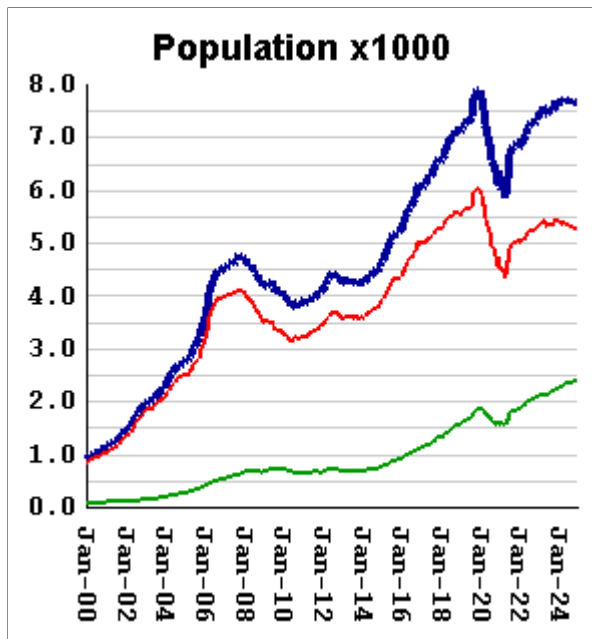
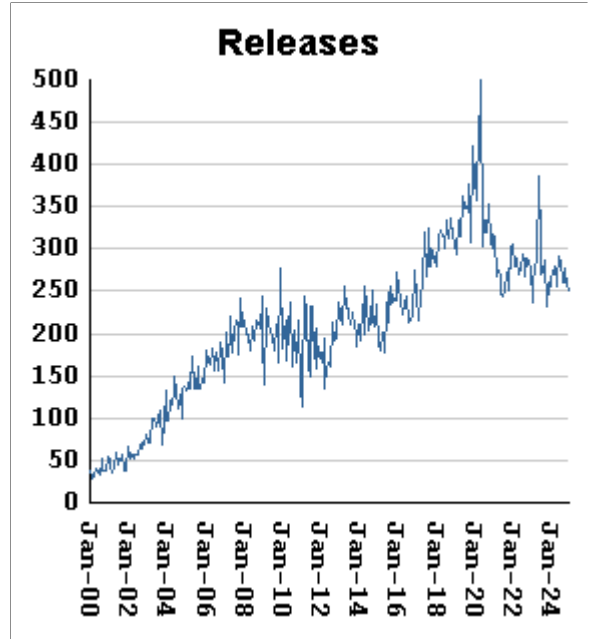
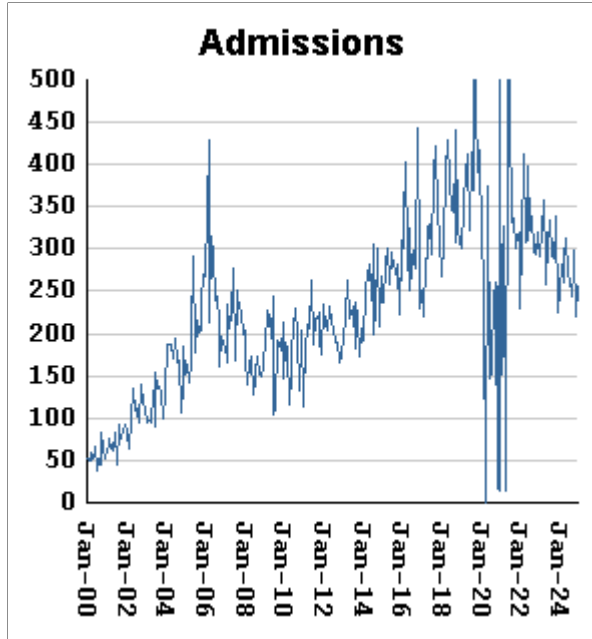
Monthly releases from prison by type of release, for the past 48 months

Month	A	B	C	D	E	F	G	H	I	J
	Clemency + Prob	Clemency Only	Maxout + Prob	Maxout Only	Other Rels	Total Releases (A+B+C+D+E)	Total Clemency (A+B)	Total Maxout (C+D)	Percent Clemency (G/F)	Percent Maxout (H/F)
Jan-21	634	91	516	58	21	1320	725	574	54.92%	43.48%
Feb-21	615	97	481	62	20	1275	712	543	55.84%	42.59%
Mar-21	568	108	496	70	16	1258	676	566	53.74%	44.99%
Apr-21	531	98	454	61	24	1168	629	515	53.85%	44.09%
May-21	445	78	508	54	21	1106	523	562	47.29%	50.81%
Jun-21	367	85	468	67	21	1008	452	535	44.84%	53.08%
Jul-21	391	66	534	63	19	1073	457	597	42.59%	55.64%
Aug-21	410	71	532	63	28	1104	481	595	43.57%	53.89%
Sep-21	441	78	522	68	32	1141	519	590	45.49%	51.71%
Oct-21	447	78	526	56	21	1128	525	582	46.54%	51.60%
Nov-21	425	79	493	65	18	1080	504	558	46.67%	51.67%
Dec-21	468	83	483	56	18	1108	551	539	49.73%	48.65%
Jan-22	458	81	552	75	26	1192	539	627	45.22%	52.60%
Feb-22	443	81	465	71	24	1084	524	536	48.34%	49.45%
Mar-22	460	73	514	57	16	1120	533	571	47.59%	50.98%
Apr-22	456	72	471	70	16	1085	528	541	48.66%	49.86%
May-22	440	78	541	63	26	1148	518	604	45.12%	52.61%
Jun-22	459	62	527	58	21	1127	521	585	46.23%	51.91%
Jul-22	442	68	529	60	14	1113	510	589	45.82%	52.92%
Aug-22	426	66	617	67	21	1197	492	684	41.10%	57.14%
Sep-22	397	78	550	58	18	1101	475	608	43.14%	55.22%
Oct-22	374	61	606	60	23	1124	435	666	38.70%	59.25%
Nov-22	366	53	524	54	19	1016	419	578	41.24%	56.89%
Dec-22	345	57	550	59	28	1039	402	609	38.69%	58.61%
Jan-23	375	51	527	59	23	1035	426	586	41.16%	56.62%
Feb-23	388	46	495	51	17	997	434	546	43.53%	54.76%
Mar-23	376	56	574	62	24	1092	432	636	39.56%	58.24%
Apr-23	390	57	574	53	26	1100	447	627	40.64%	57.00%
May-23	328	46	933	128	20	1455	374	1061	25.70%	72.92%
Jun-23	462	71	568	58	19	1178	533	626	45.25%	53.14%
Jul-23	461	73	515	44	25	1118	534	559	47.76%	50.00%
Aug-23	403	51	593	51	22	1120	454	644	40.54%	57.50%
Sep-23	407	52	578	42	10	1089	459	620	42.15%	56.93%
Oct-23	364	50	577	52	31	1074	414	629	38.55%	58.57%
Nov-23	356	55	495	63	19	988	411	558	41.60%	56.48%
Dec-23	366	47	554	58	21	1046	413	612	39.48%	58.51%
Jan-24	367	62	601	60	32	1122	429	661	38.24%	58.91%
Feb-24	395	52	578	59	24	1108	447	637	40.34%	57.49%
Mar-24	380	63	589	64	20	1116	443	653	39.70%	58.51%
Apr-24	412	45	528	57	33	1075	457	585	42.51%	54.42%
May-24	425	57	616	68	26	1192	482	684	40.44%	57.38%
Jun-24	409	64	576	60	23	1132	473	636	41.78%	56.18%
Jul-24	401	59	631	67	38	1196	460	698	38.46%	58.36%
Aug-24	383	66	641	58	19	1167	449	699	38.47%	59.90%
Sep-24	380	64	561	65	34	1104	444	626	40.22%	56.70%
Oct-24	401	58	630	57	28	1174	459	687	39.10%	58.52%
Nov-24	390	52	591	56	23	1112	442	647	39.75%	58.18%
Dec-24	389	60	555	48	33	1085	449	603	41.38%	55.58%

Inmates with meth crimes, by month, Jan-2000 to Dec-2024

Methamphetamine is one of the most addictive drugs ever known. At first it induces intense euphoria, but with continued use causes severe depression and physical deterioration, including the dental catastrophe known as "meth mouth".

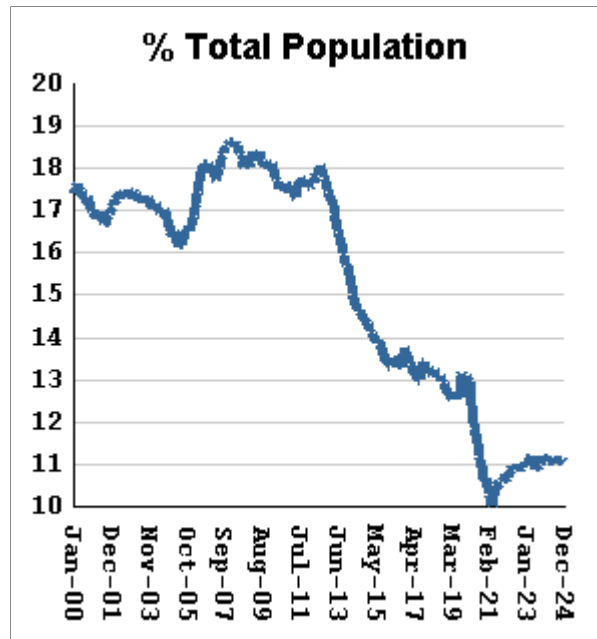
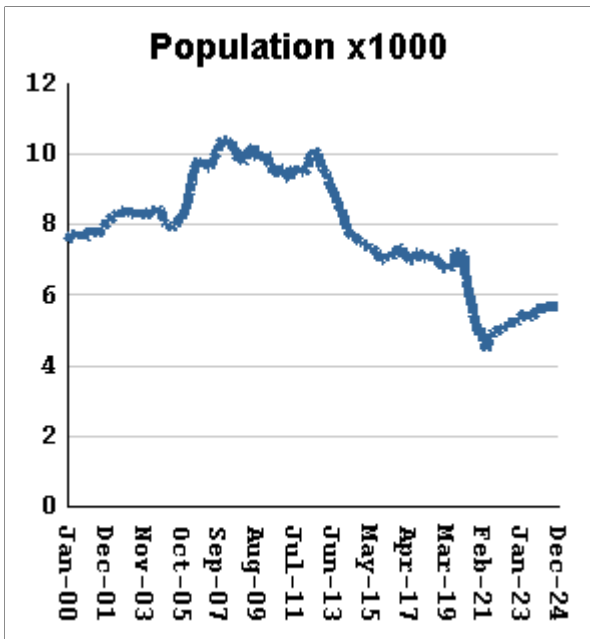
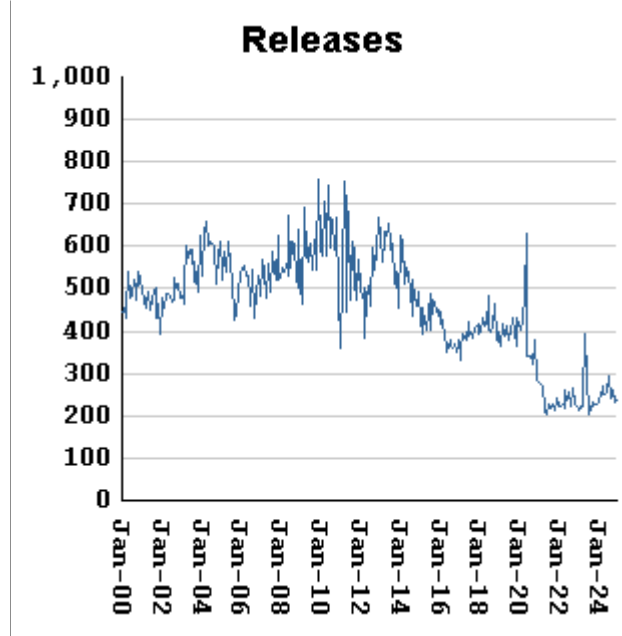
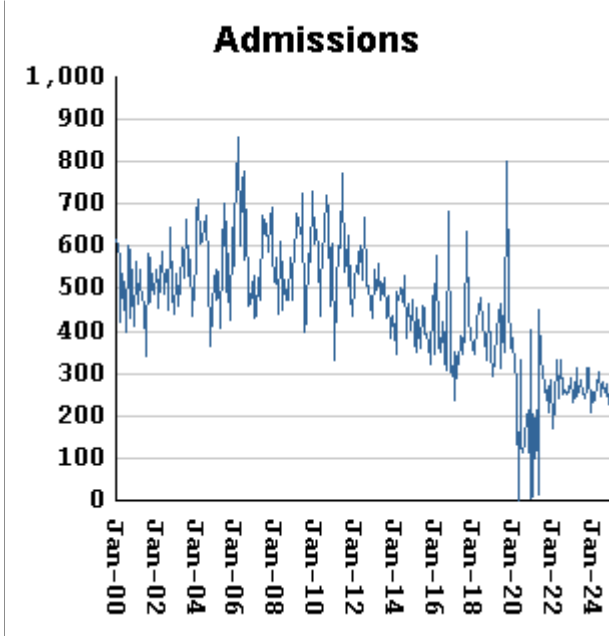
Georgia's meth epidemic peaked in 2007-2008, then declined, but is again growing. It started in the predominantly white northern counties, with blacks accounting for only about 5% of convictions. But black usage has expanded, and now accounts for about 15% of convictions.



Methamphetamine admissions	RISE BY	37	from	220	to	257
Methamphetamine releases	fall by	5	from	257	to	252
Methamphetamine population	RISES BY	5	from	7669	to	7674
Meth white population	falls by	6	from	5289	to	5283
Meth non-white population	RISES BY	11	from	2380	to	2391
Percent meth inmates who are non-white	RISES BY	.13 %	from	31.03%	to	31.16%

Non-violent first-incarcerants, by month, Jan-2000 to Dec-2024

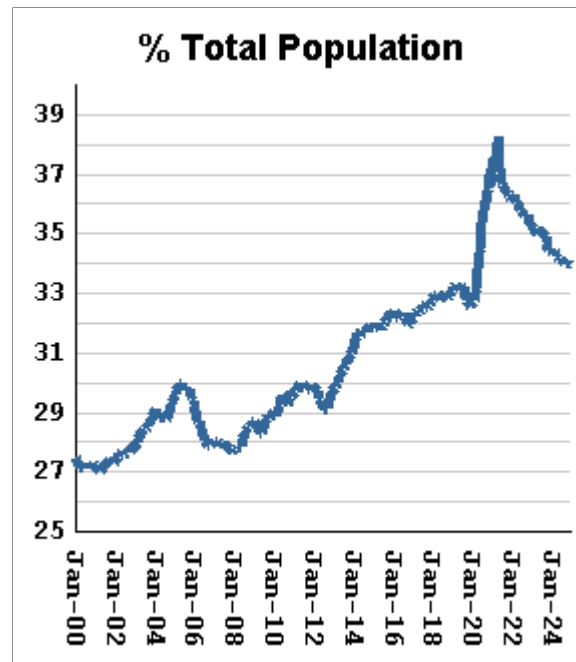
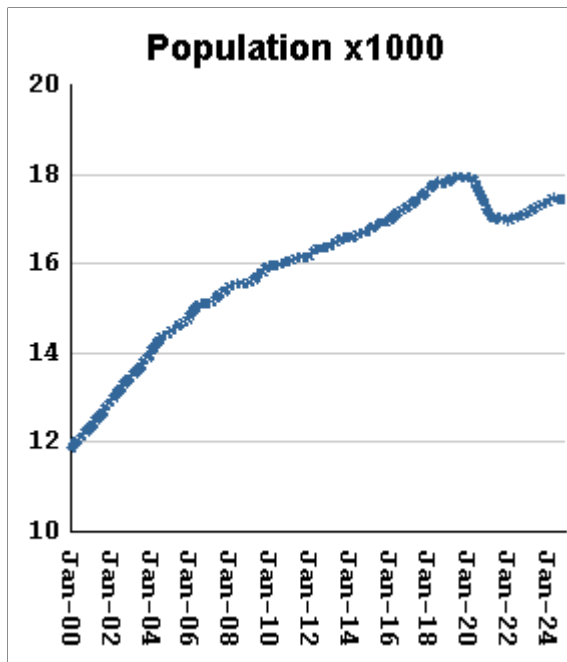
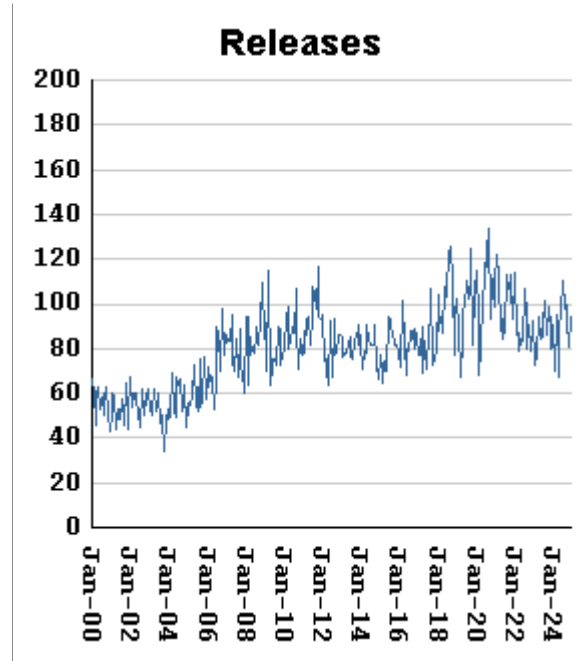
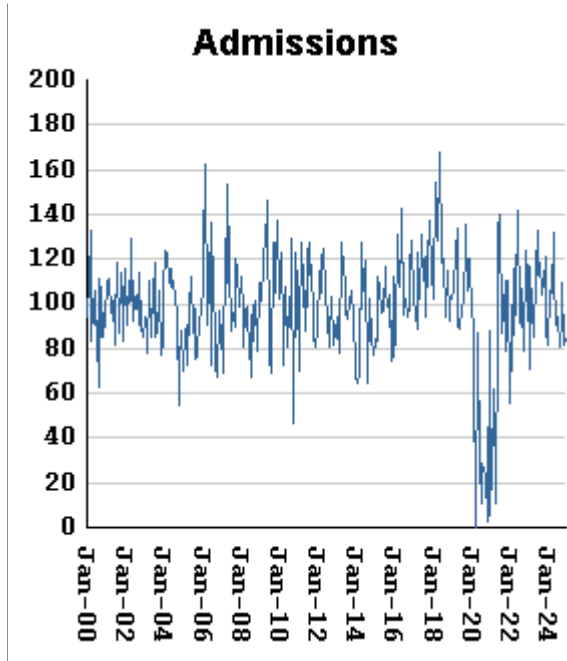
Historically, about one in six Georgia prison inmates has been a first-time incarcerant with a non-violent crime. In 2012 Georgia passed HB1176, which aimed to curb the growth of prison population by steering the least dangerous, least hardened offenders away from prison through pre-trial intervention, diversion, drug courts and treatment programs, and raising the dollar thresholds that define property felonies. The expectation is that over time, these measures will reduce the percentage of first-time non-violent incarcerants in prison.



Non-viol/1st-Incar admissions	fall by	3	from	228	to	225
Non-viol/1st-Incar releases	RISE BY	1	from	234	to	235
Non-viol/1st-Incar population	falls by	10	from	5685	to	5675
Non-viol/1st-Incar % of total population	falls by	.03 %	from	11.07%	to	11.04%

"Seven Deadly Sins" by month, Jan-2000 to Dec-2024

Tough legislation in 1995 imposed mandatory ten-year minimum terms for kidnapping, armed robbery, rape, aggravated sodomy, aggravated sexual battery, and aggravated child molestation, and a minimum of 25 years for murder. A second conviction resulted in life without parole. As predicted, longer prison terms caused population to climb steeply for about a decade. It then began to level off, as releases started catching up with admissions. The 2008 dip in percentage of total population (bottom right) was caused by the surge of methamphetamine convictions (Page MO-03). Note: these graphs include inmates convicted before 1995.



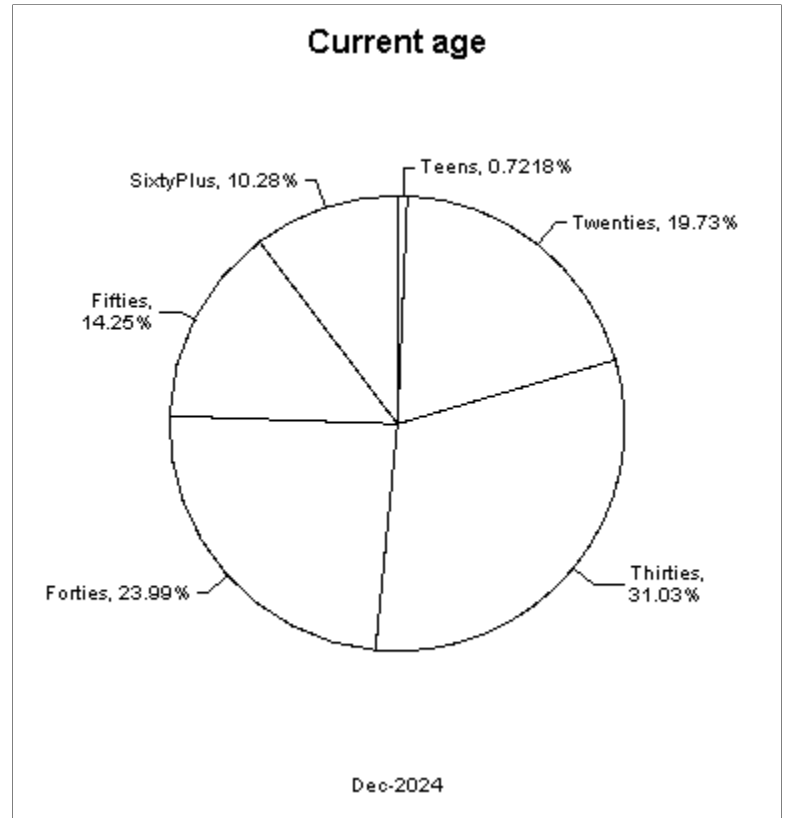
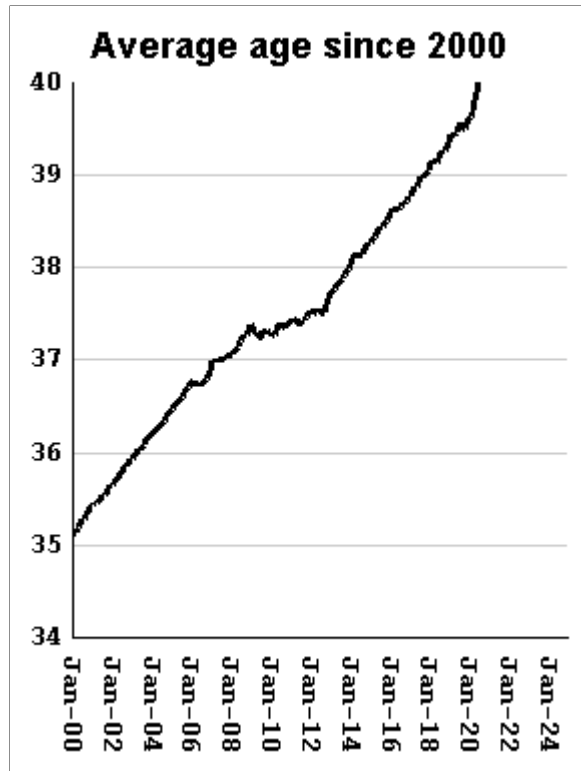
"Seven Deadly Sin" admissions	RISE BY	2	from	82	to	84
"Seven Deadly Sin" releases	RISE BY	13	from	81	to	94
"Seven Deadly Sin" population	falls by	10	from	17461	to	17451
"Seven Deadly Sin" % of total population	falls by	.05 %	from	34%	to	33.95%

Inmate subpopulation counts and percentages, for the past 48 months

Month	Methamphetamine						1st Incar Non-Violent		Seven Deadly Sins	
	Total Number	Total Percent	White Number	White Percent	Non White Number	Non White Percent	Number	Percent	Number	Percent
Jan-21	6063	13.20%	4526	74.65%	1544	25.47%	4767	10.38%	17174	37.39%
Feb-21	6040	13.29%	4523	74.88%	1574	26.06%	4680	10.30%	17080	37.58%
Mar-21	6100	13.44%	4509	73.92%	1598	26.20%	4625	10.19%	17030	37.51%
Apr-21	5841	13.17%	4309	73.77%	1539	26.35%	4424	9.98%	16953	38.23%
May-21	6183	13.69%	4609	74.54%	1644	26.59%	4665	10.33%	16952	37.54%
Jun-21	6447	14.04%	4756	73.77%	1731	26.85%	4785	10.42%	17002	37.03%
Jul-21	6665	14.33%	4893	73.41%	1779	26.69%	4869	10.47%	17053	36.67%
Aug-21	6742	14.45%	4949	73.41%	1809	26.83%	4906	10.52%	17027	36.50%
Sep-21	6810	14.56%	4988	73.25%	1829	26.86%	4940	10.56%	17024	36.39%
Oct-21	6834	14.60%	5006	73.25%	1835	26.85%	4938	10.55%	16990	36.30%
Nov-21	6899	14.70%	5058	73.31%	1857	26.92%	4992	10.64%	16994	36.22%
Dec-21	6916	14.70%	5064	73.22%	1859	26.88%	5034	10.70%	17011	36.15%
Jan-22	6840	14.65%	5016	73.33%	1859	27.18%	4981	10.67%	16953	36.31%
Feb-22	6869	14.70%	5042	73.40%	1885	27.44%	4997	10.69%	16951	36.27%
Mar-22	6991	14.84%	5076	72.61%	1922	27.49%	5101	10.83%	16980	36.04%
Apr-22	7014	14.86%	5091	72.58%	1930	27.52%	5143	10.90%	16987	36.00%
May-22	7056	14.94%	5118	72.53%	1962	27.81%	5124	10.85%	17006	36.00%
Jun-22	7177	15.05%	5190	72.31%	1996	27.81%	5215	10.94%	17065	35.79%
Jul-22	7206	15.07%	5198	72.13%	2015	27.96%	5209	10.90%	17050	35.67%
Aug-22	7261	15.18%	5252	72.33%	2038	28.07%	5243	10.96%	17045	35.64%
Sep-22	7290	15.22%	5233	71.78%	2063	28.30%	5230	10.92%	17072	35.63%
Oct-22	7296	15.23%	5259	72.08%	2068	28.34%	5257	10.97%	17060	35.60%
Nov-22	7332	15.21%	5308	72.39%	2067	28.19%	5286	10.96%	17105	35.48%
Dec-22	7365	15.18%	5304	72.02%	2067	28.07%	5350	11.03%	17125	35.29%
Jan-23	7421	15.26%	5336	71.90%	2105	28.37%	5368	11.04%	17123	35.20%
Feb-23	7485	15.33%	5370	71.74%	2135	28.52%	5398	11.05%	17167	35.15%
Mar-23	7564	15.39%	5420	71.66%	2150	28.42%	5487	11.16%	17186	34.96%
Apr-23	7559	15.38%	5426	71.78%	2139	28.30%	5491	11.17%	17177	34.94%
May-23	7430	15.18%	5336	71.82%	2124	28.59%	5358	10.94%	17209	35.15%
Jun-23	7433	15.10%	5310	71.44%	2129	28.64%	5349	10.87%	17257	35.06%
Jul-23	7495	15.18%	5368	71.62%	2168	28.93%	5399	10.94%	17278	35.00%
Aug-23	7512	15.19%	5336	71.03%	2181	29.03%	5418	10.96%	17295	34.97%
Sep-23	7513	15.14%	5334	71.00%	2183	29.06%	5452	10.99%	17313	34.89%
Oct-23	7609	15.23%	5401	70.98%	2221	29.19%	5544	11.10%	17324	34.68%
Nov-23	7689	15.25%	5447	70.84%	2246	29.21%	5632	11.17%	17355	34.43%
Dec-23	7669	15.20%	5432	70.83%	2241	29.22%	5611	11.12%	17363	34.42%
Jan-24	7654	15.16%	5417	70.77%	2264	29.58%	5628	11.15%	17354	34.38%
Feb-24	7661	15.15%	5400	70.49%	2264	29.55%	5611	11.10%	17390	34.40%
Mar-24	7642	15.07%	5363	70.18%	2282	29.86%	5620	11.08%	17400	34.31%
Apr-24	7680	15.06%	5372	69.95%	2322	30.23%	5645	11.07%	17465	34.24%
May-24	7726	15.09%	5380	69.63%	2349	30.40%	5701	11.14%	17489	34.17%
Jun-24	7704	15.04%	5363	69.61%	2344	30.43%	5684	11.09%	17482	34.12%
Jul-24	7683	14.99%	5335	69.44%	2372	30.87%	5669	11.06%	17466	34.07%
Aug-24	7667	14.95%	5303	69.17%	2366	30.86%	5679	11.08%	17449	34.03%
Sep-24	7684	15.00%	5304	69.03%	2381	30.99%	5679	11.09%	17443	34.06%
Oct-24	7706	14.99%	5325	69.10%	2381	30.90%	5691	11.07%	17460	33.97%
Nov-24	7669	14.93%	5289	68.97%	2380	31.03%	5685	11.07%	17461	34.00%
Dec-24	7674	14.93%	5283	68.84%	2391	31.16%	5675	11.04%	17451	33.95%

Overview of inmate age statistics, Jan-2000 to Dec-2024

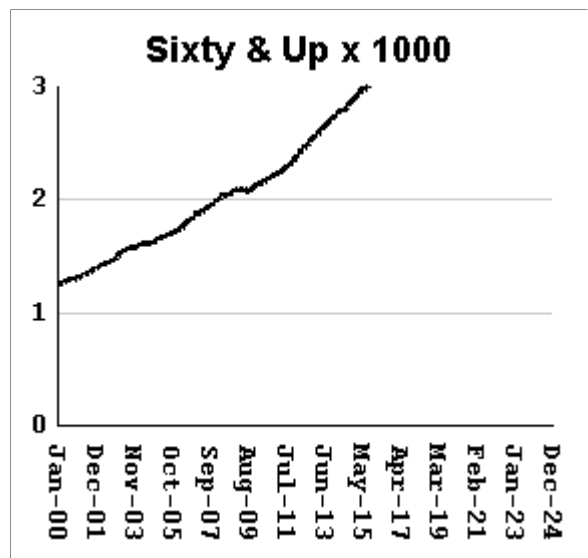
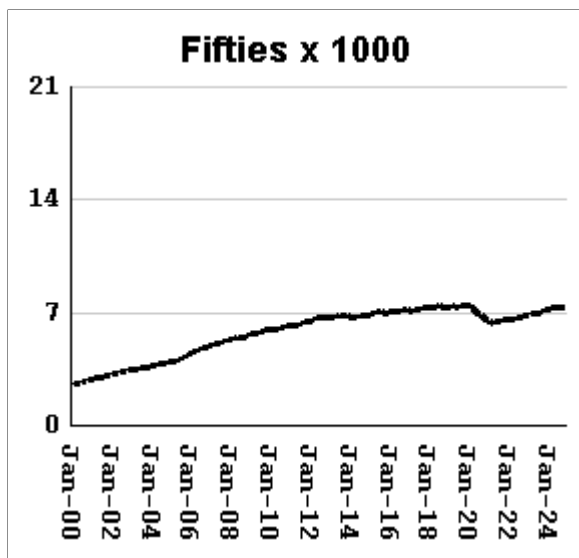
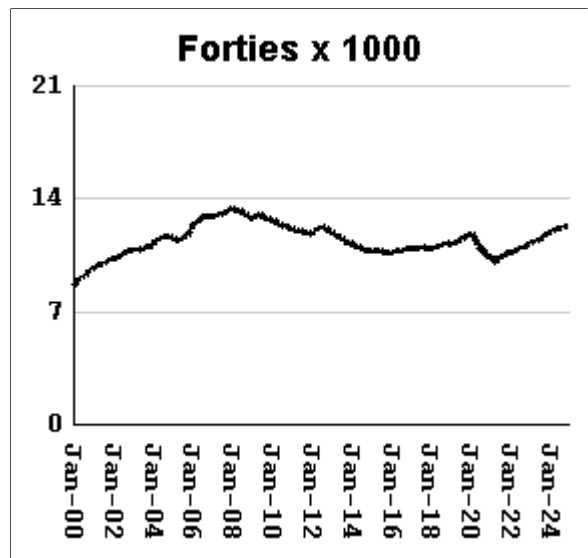
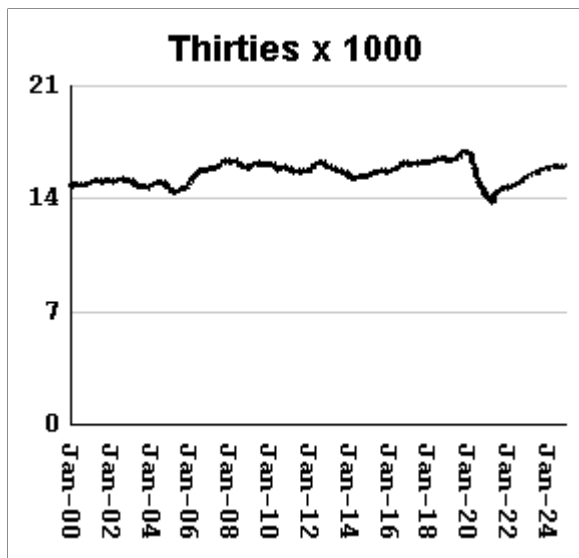
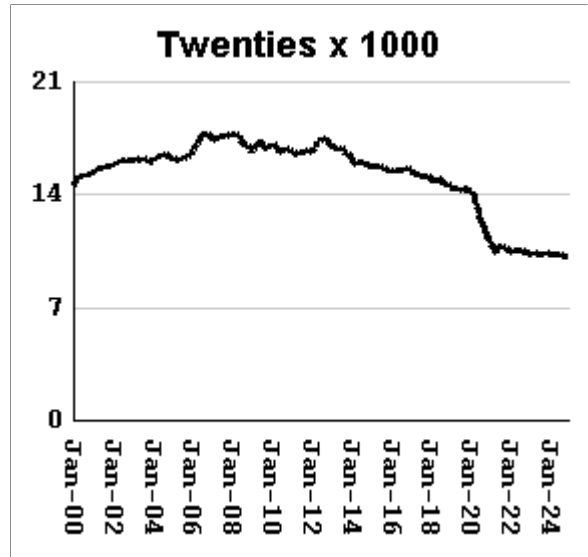
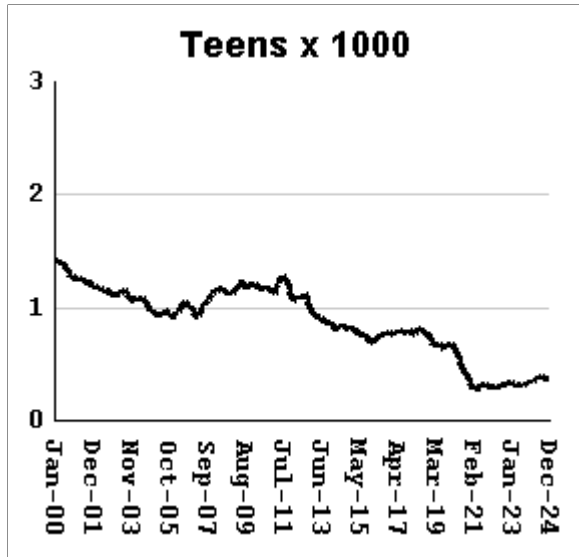
The "aging inmate population" is a concern in correctional systems throughout America, including Georgia. Here, the increase in inmate age is the result of several factors. Teenagers have been steered away from prison by increased usage of probation and other alternatives, at least for their first convictions. And there has been a surge of middle-aged male sex offenders due to the expanding "It's OK to tell" ethos. But most importantly, more severe sentence lengths and release policies have greatly increased the length of time that most offenders -- especially violent ones -- spend in prison, thereby increasing their average age.



Average age of active inmates	RISES BY	.04	from	41.72	to	41.76
Number in their teens	RISES BY	1	from	370	to	371
Percentage in their teens	level	at	0.72%
Number in their twenties	falls by	8	from	10,150	to	10,142
Percentage in their twenties	falls by	0.04%	from	19.77%	to	19.73%
Number in their thirties	falls by	44	from	15,992	to	15,948
Percentage in their thirties	falls by	0.11%	from	31.14%	to	31.03%
Number in their forties	RISES BY	43	from	12,286	to	12,329
Percentage in their forties	RISES BY	0.06%	from	23.93%	to	23.99%
Number in their fifties	RISES BY	38	from	7,285	to	7,323
Percentage in their fifties	RISES BY	0.06%	from	14.19%	to	14.25%
Number age sixty and up	RISES BY	16	from	5,267	to	5,283
Percentage age sixty and up	RISES BY	.02%	from	10.26%	to	10.28%

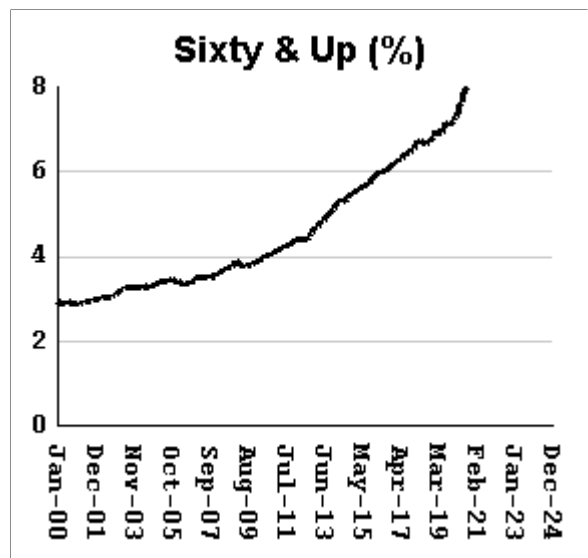
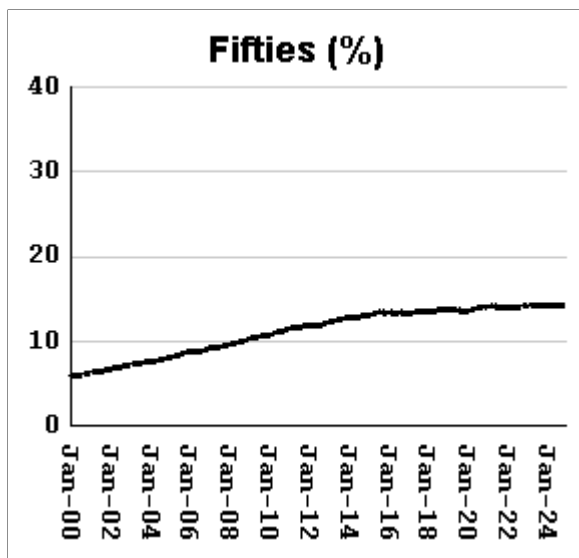
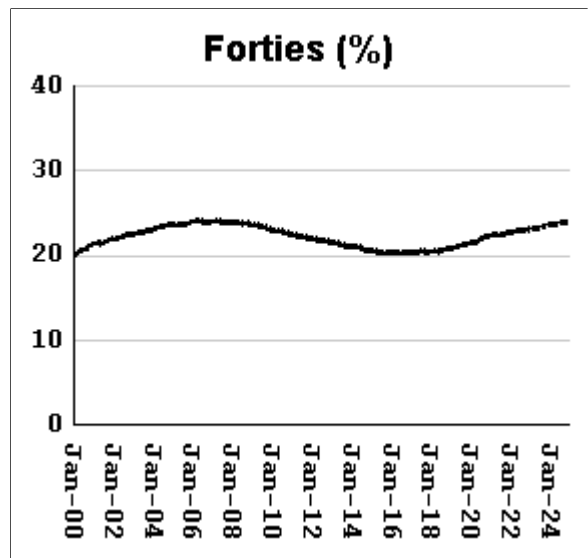
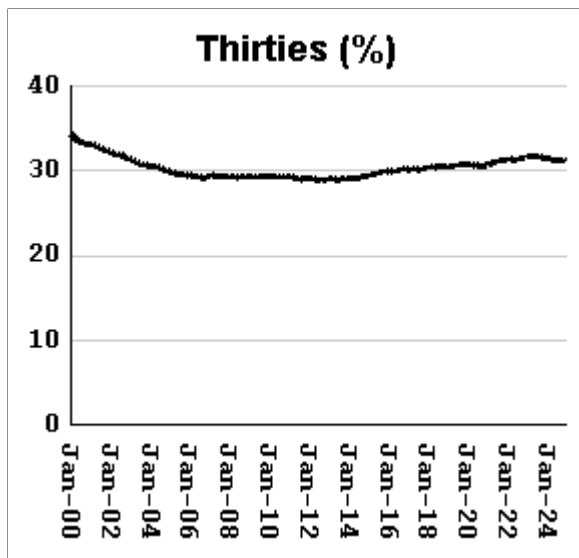
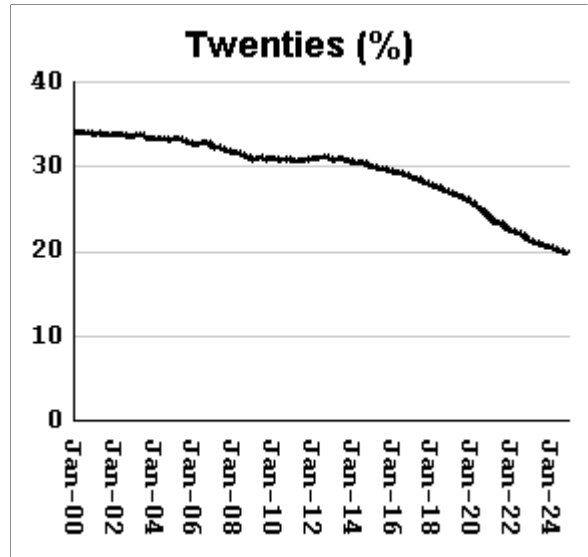
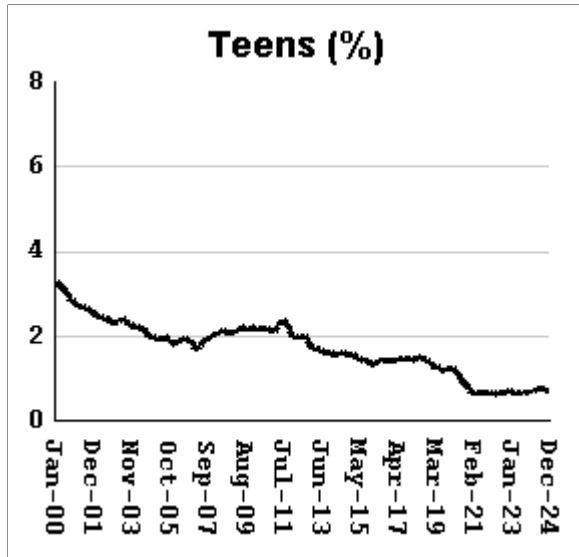
Monthly counts of inmates by age group, Jan-2000 to Dec-2024

Y-axis of Twenties/Thirties/Forties/Fifties runs from 0 to 21,000. Y-axis of Teens/Sixty+ runs from 0 to 3,000.



Monthly percentages of inmates by age group, Jan-2000 to Dec-2024

Y-axis of Twenties/Thirties/Forties/Fifties runs from 0% to 40%. Y-axis of Teens/Sixty+ runs from 0% to 8%

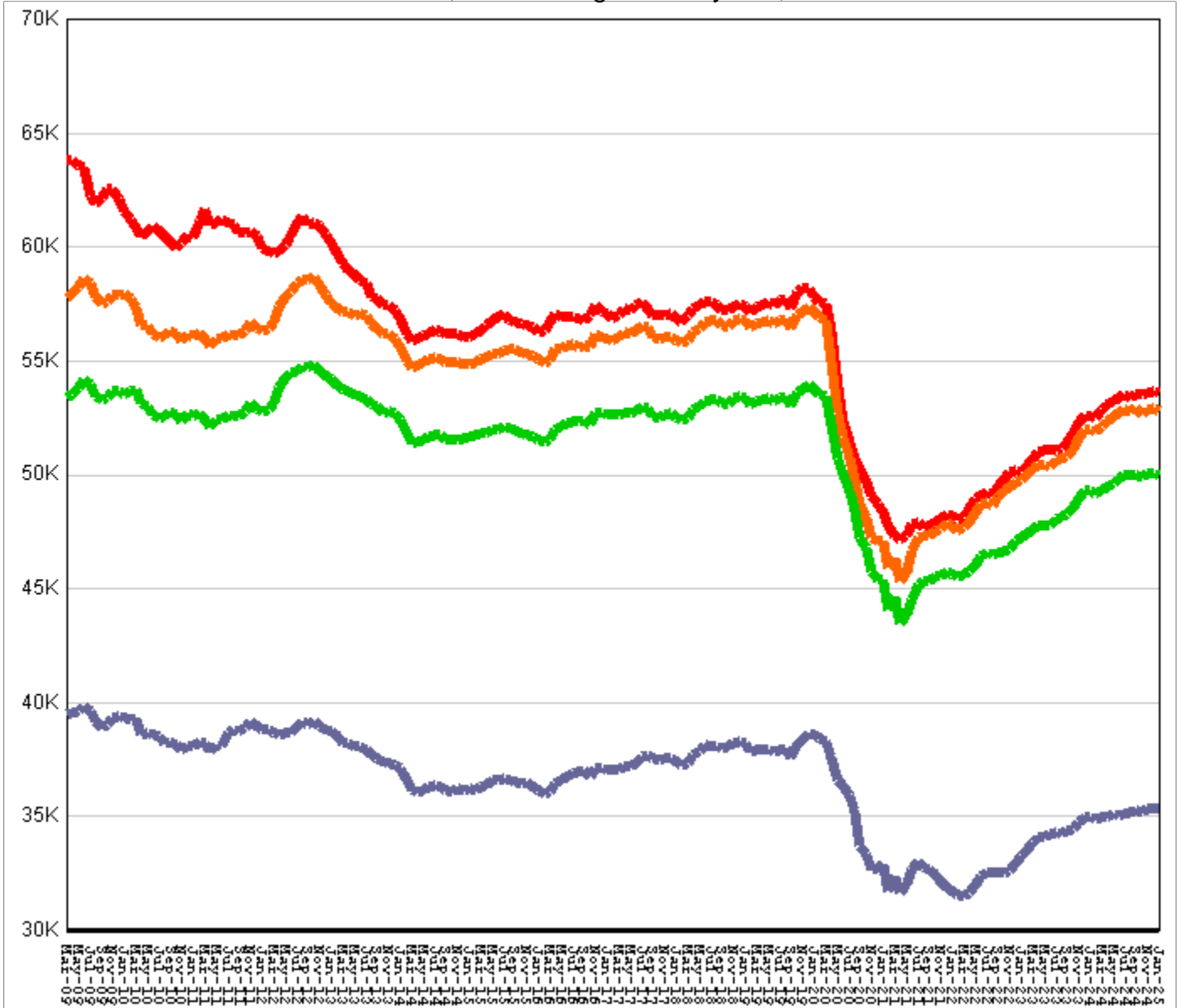


Inmate counts & percentages by age, for past 48 months

Month	Avg Age	Teens		Twenties		Thirties		Forties		Fifties		Sixty & Up	
		Number	Per-cent	Number	Per-cent	Number	Per-cent	Number	Per-cent	Number	Per-cent	Number	Per-cent
Jan-21	40.52	305	0.66%	10948	23.83%	14059	30.60%	10262	22.34%	6468	14.08%	3910	8.51%
Feb-21	40.56	292	0.64%	10791	23.74%	14071	30.96%	10261	22.58%	6423	14.13%	3895	8.57%
Mar-21	40.6	297	0.65%	10662	23.49%	14000	30.84%	10172	22.41%	6371	14.03%	3909	8.61%
Apr-21	40.72	273	0.62%	10312	23.25%	13641	30.76%	9961	22.46%	6279	14.16%	3892	8.78%
May-21	40.65	290	0.64%	10581	23.43%	14018	31.04%	10173	22.53%	6371	14.11%	3945	8.74%
Jun-21	40.62	307	0.67%	10777	23.47%	14243	31.02%	10280	22.39%	6448	14.04%	4002	8.72%
Jul-21	40.61	316	0.68%	10852	23.34%	14427	31.02%	10383	22.33%	6492	13.96%	4045	8.70%
Aug-21	40.64	317	0.68%	10797	23.14%	14525	31.13%	10471	22.44%	6512	13.96%	4068	8.72%
Sep-21	40.67	317	0.68%	10739	22.96%	14595	31.20%	10494	22.43%	6521	13.94%	4123	8.81%
Oct-21	40.71	299	0.64%	10640	22.73%	14644	31.29%	10574	22.59%	6525	13.94%	4133	8.83%
Nov-21	40.73	299	0.64%	10628	22.65%	14702	31.33%	10651	22.70%	6533	13.92%	4149	8.84%
Dec-21	40.75	302	0.64%	10599	22.53%	14731	31.31%	10688	22.72%	6565	13.95%	4177	8.88%
Jan-22	40.81	293	0.63%	10476	22.44%	14639	31.35%	10641	22.79%	6570	14.07%	4184	8.96%
Feb-22	40.83	298	0.64%	10478	22.42%	14675	31.40%	10666	22.82%	6568	14.06%	4204	9.00%
Mar-22	40.82	295	0.63%	10525	22.34%	14766	31.34%	10729	22.77%	6578	13.96%	4233	8.98%
Apr-22	40.86	285	0.60%	10517	22.29%	14760	31.28%	10785	22.86%	6600	13.99%	4249	9.00%
May-22	40.89	282	0.60%	10501	22.23%	14811	31.35%	10818	22.90%	6601	13.97%	4285	9.07%
Jun-22	40.88	307	0.64%	10587	22.20%	14926	31.30%	10928	22.92%	6632	13.91%	4312	9.04%
Jul-22	40.92	316	0.66%	10542	22.05%	14969	31.32%	10970	22.95%	6674	13.96%	4339	9.08%
Aug-22	40.95	319	0.67%	10510	21.98%	15018	31.40%	11012	23.03%	6711	14.03%	4380	9.16%
Sep-22	41	316	0.66%	10428	21.77%	15041	31.39%	10983	22.92%	6739	14.07%	4412	9.21%
Oct-22	41.02	322	0.67%	10369	21.64%	15127	31.57%	11038	23.03%	6754	14.09%	4430	9.24%
Nov-22	41.04	334	0.69%	10392	21.56%	15231	31.59%	11140	23.11%	6801	14.11%	4475	9.28%
Dec-22	41.07	341	0.70%	10353	21.34%	15314	31.56%	11162	23.00%	6853	14.12%	4508	9.29%
Jan-23	41.1	329	0.68%	10330	21.24%	15394	31.65%	11200	23.03%	6873	14.13%	4551	9.36%
Feb-23	41.12	318	0.65%	10332	21.16%	15462	31.66%	11291	23.12%	6877	14.08%	4602	9.42%
Mar-23	41.12	318	0.65%	10385	21.13%	15551	31.64%	11379	23.15%	6926	14.09%	4603	9.36%
Apr-23	41.15	308	0.63%	10377	21.11%	15552	31.64%	11388	23.17%	6929	14.10%	4611	9.38%
May-23	41.17	314	0.64%	10332	21.11%	15555	31.77%	11363	23.21%	6921	14.14%	4626	9.45%
Jun-23	41.2	315	0.64%	10305	20.94%	15620	31.74%	11394	23.15%	6939	14.10%	4649	9.45%
Jul-23	41.23	321	0.65%	10316	20.89%	15692	31.78%	11505	23.30%	6977	14.13%	4684	9.49%
Aug-23	41.29	307	0.62%	10271	20.77%	15632	31.61%	11540	23.34%	6977	14.11%	4730	9.56%
Sep-23	41.31	317	0.64%	10285	20.73%	15650	31.54%	11604	23.39%	7003	14.11%	4766	9.60%
Oct-23	41.33	334	0.67%	10297	20.62%	15761	31.55%	11731	23.49%	7052	14.12%	4814	9.64%
Nov-23	41.35	335	0.66%	10390	20.61%	15861	31.46%	11861	23.53%	7119	14.12%	4850	9.62%
Dec-23	41.38	344	0.68%	10353	20.52%	15839	31.40%	11906	23.60%	7150	14.17%	4853	9.62%
Jan-24	41.4	349	0.69%	10336	20.48%	15916	31.53%	11918	23.61%	7181	14.23%	4874	9.66%
Feb-24	41.44	344	0.68%	10285	20.34%	15888	31.43%	11948	23.63%	7193	14.23%	4900	9.69%
Mar-24	41.47	351	0.69%	10297	20.30%	15908	31.37%	11996	23.65%	7230	14.26%	4938	9.74%
Apr-24	41.49	369	0.72%	10334	20.26%	15967	31.30%	12114	23.75%	7272	14.26%	4984	9.77%
May-24	41.52	381	0.74%	10329	20.18%	16004	31.27%	12137	23.71%	7305	14.27%	5033	9.83%
Jun-24	41.55	394	0.77%	10316	20.13%	16018	31.26%	12144	23.70%	7282	14.21%	5088	9.93%
Jul-24	41.59	392	0.76%	10300	20.09%	16046	31.30%	12224	23.85%	7292	14.23%	5136	10.02%
Aug-24	41.62	378	0.74%	10233	19.96%	16025	31.25%	12226	23.84%	7272	14.18%	5141	10.03%
Sep-24	41.66	377	0.74%	10188	19.89%	15959	31.16%	12249	23.91%	7282	14.22%	5164	10.08%
Oct-24	41.68	375	0.73%	10218	19.88%	16003	31.13%	12254	23.84%	7319	14.24%	5231	10.18%
Nov-24	41.72	370	0.72%	10150	19.77%	15992	31.14%	12286	23.93%	7285	14.19%	5267	10.26%
Dec-24	41.76	371	0.72%	10142	19.73%	15948	31.03%	12329	23.99%	7323	14.25%	5283	10.28%

All housed offenders under GDC jurisdiction

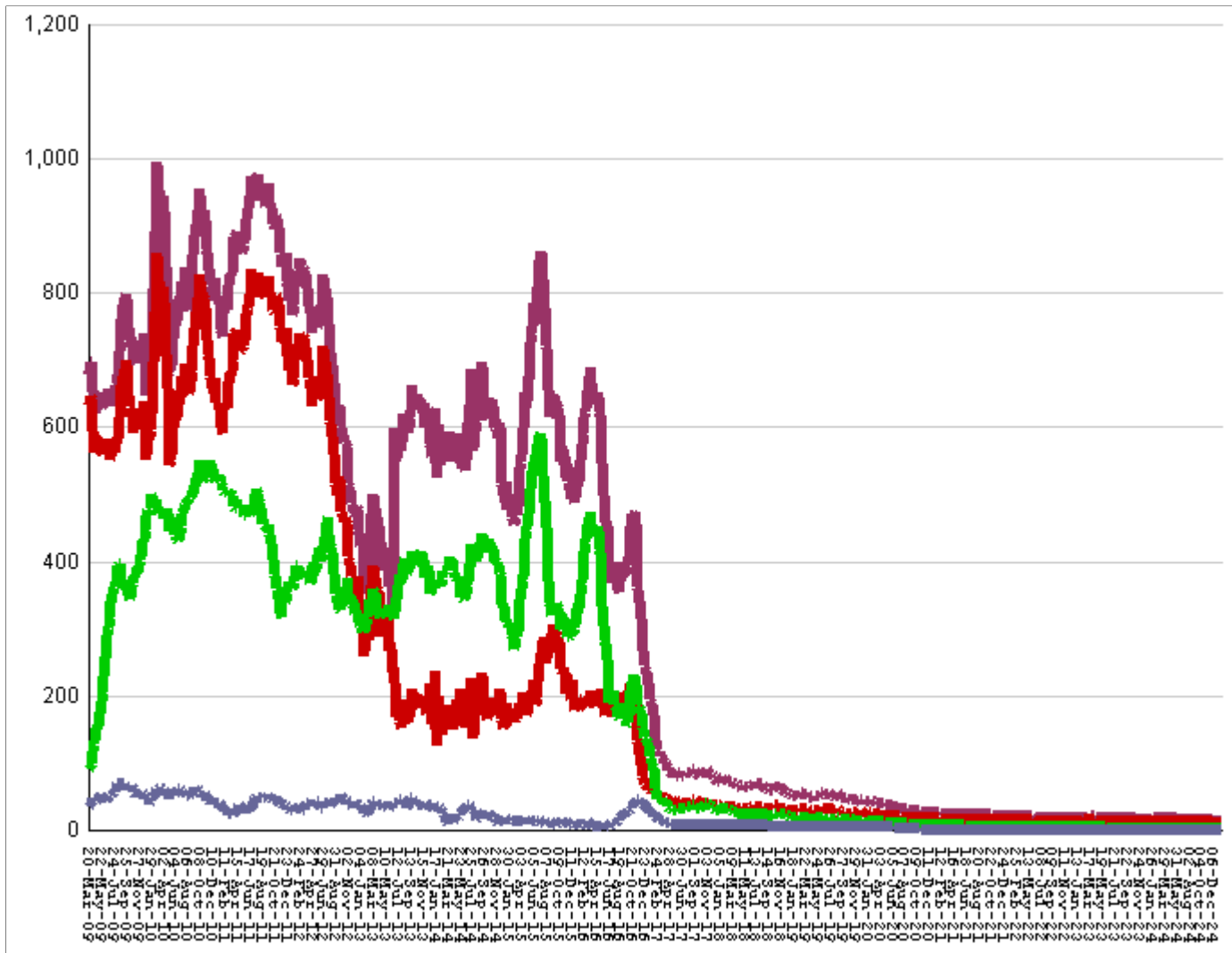
March 20, 2009 through January 17, 2025



All in bed + probs in jail + backlog	RISE BY	3	from	53,539	to	53,542
Probationers in jail	14	at	14
Inmate jail backlog	falls by	26	from	778	to	752
All in beds: inmate + Prob + parole	RISE BY	29	from	52,747	to	52,776
Total probationers in beds	fall by	25	from	2,790	to	2,765
Probation detention centers	fall by	3	from	1,312	to	1,309
Probation boot camps	fall by		from		to	
Probation RSAT	fall by	22	from	1478	to	1,456
Parole revocation centers	fall by		from		to	
All in inmate beds: state + other	RISE BY	54	from	49,957	to	50,011
Other inmate facilities :	RISE BY	52	from	14,646	to	14,698
Inmate boot camps	1	at	1
Private prisons	RISE BY	27	from	7526	to	7,553
County prisons	RISE BY	39	from	4428	to	4,467
Transitional centers	fall by	14	from	2691	to	2,677
In state prisons only	RISE BY	2	from	35,311	to	35,313

Probationers in jail awaiting placement in facilities

March 20, 2009 through January 17, 2025



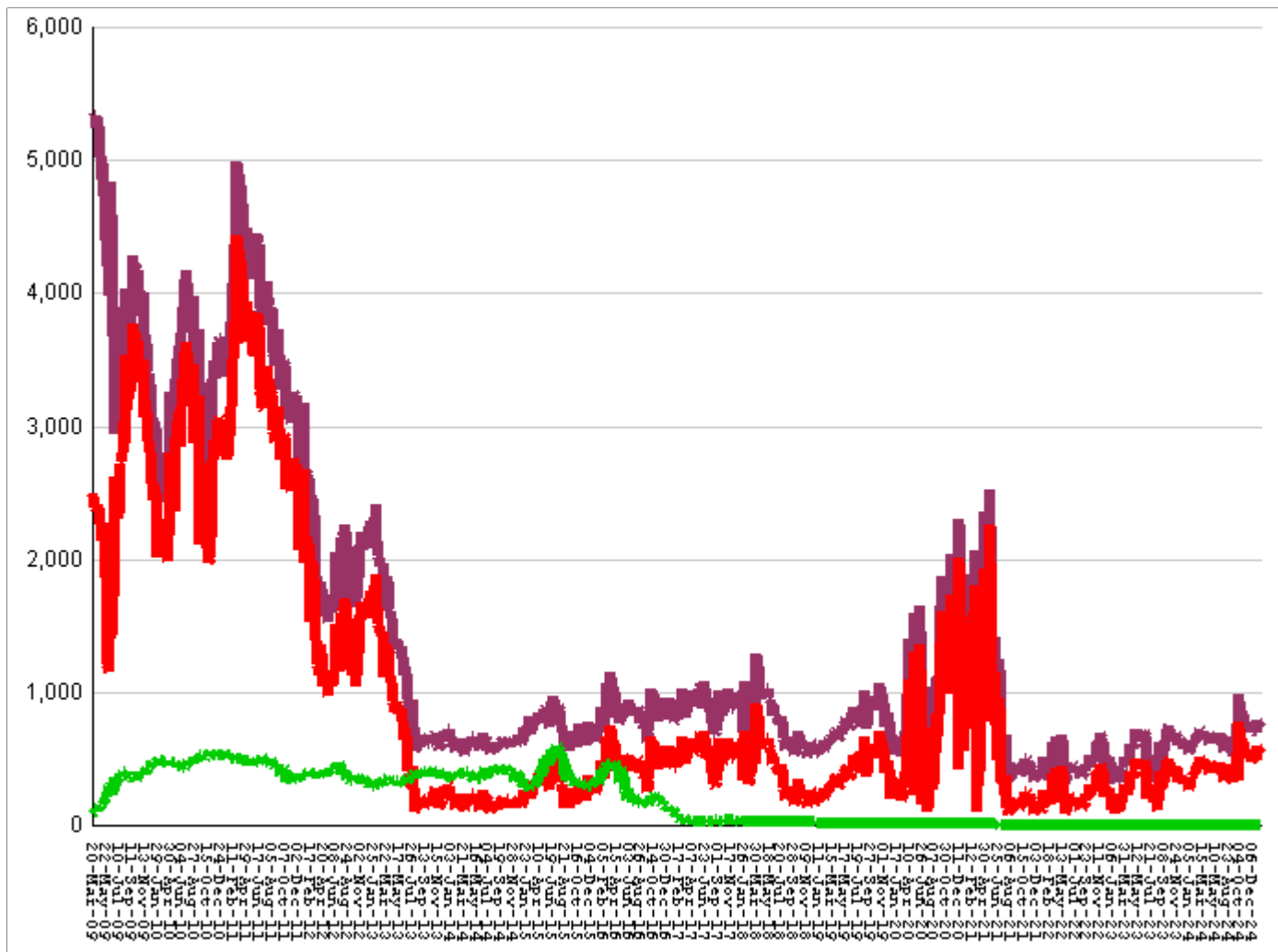
This graph shows, for each Friday since March 20 2009, the number of sentenced felony probationers who were waiting in jail for placement in facilities that GDC operates for housing probationers -- detention centers, probation residential substance abuse treatment (RSAT) centers, and probation boot camps. Counts include both those offenders sentenced directly from court, and those whose street probation was revoked.

Total probationers waiting in jail	level	at	14
... waiting for detention centers	level	at	11
... waiting for probation RSAT	level	at	2
... waiting for probation boot camps	level	at	1

The highest number of probationers waiting in jail was	994	on	05-MAR-10
... highest number waiting for detention centers was	859	on	05-MAR-10
... highest number waiting for probation RSAT was	592	on	10-JUL-15
... highest number waiting for probation boot camps was	70	on	18-SEP-09

State inmates in jail awaiting placement in facilities

March 20, 2009 through January 17, 2025



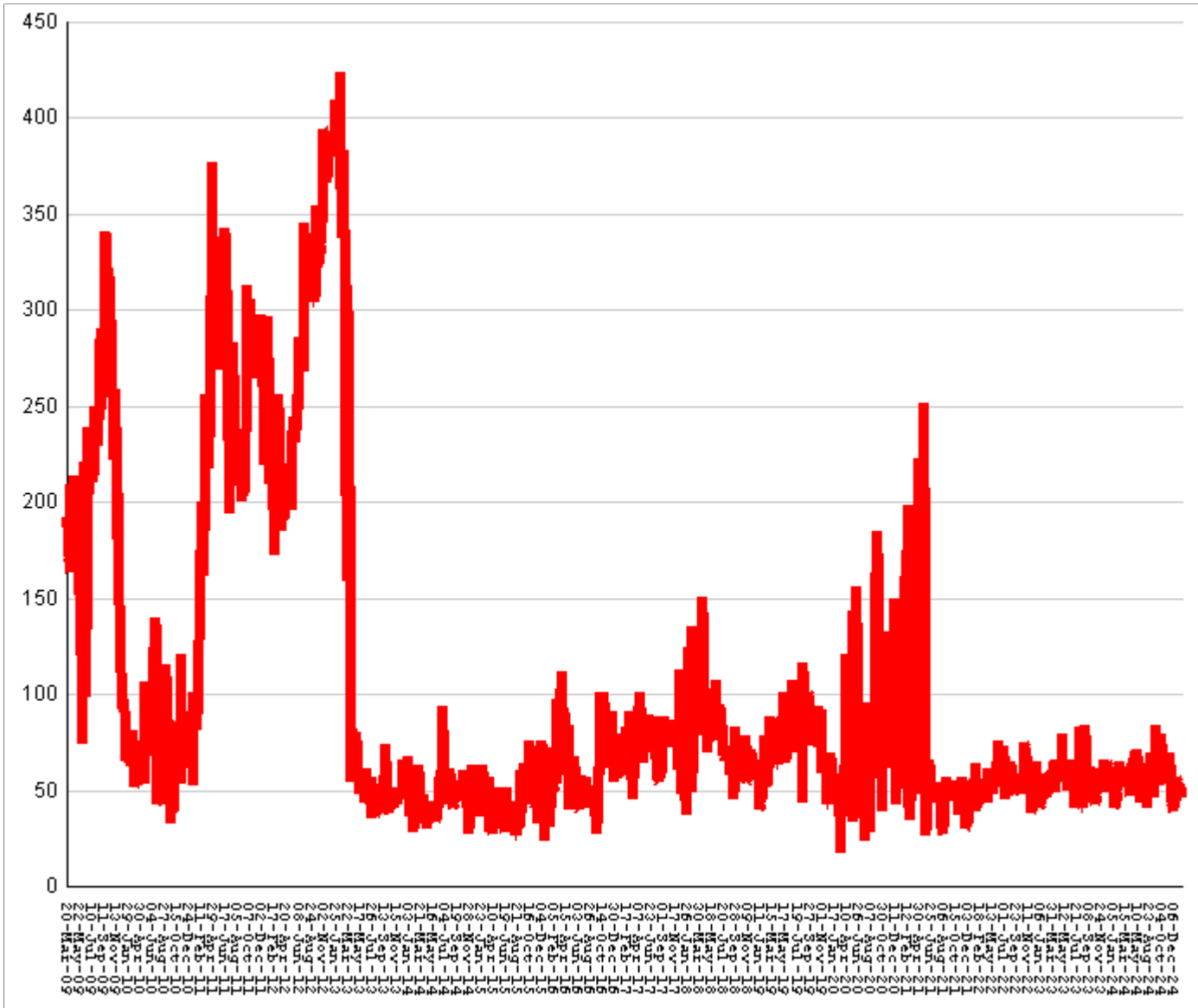
This graph shows, for each Friday since March 2009, the number of prisoners, probationers, and parolees in local jails who have been sentenced or revoked to state prison and whose documents have been received and verified by GDC. Most are almost immediately assigned to a diagnostic center, and are designated as in "admission processing". Of those a few hundred may be in the "transportation delayed" category because there is no room in the assigned diagnostic center, or because the inmate is being held for medical reasons, or for other court proceedings, or other reasons. Those remaining are "ready to be picked up".

Total state inmates waiting in jail	fall by	26	from	778	to	752
... not yet assigned to a diagnostic center	level	at	22
... total "in admission processing"	fall by	26	from	756	to	730
... with "transportation delayed"	RISE BY	2	from	180	to	182
... ready to be picked up	fall by	28	from	576	to	548

The highest number of state inmates waiting in jail was	5338	on	27-MAR-09
... highest number not asg to a diagnostic center was	2881	on	12-JUN-09
... highest number in admission processing was	4916	on	25-MAR-11
... highest number with transportation delayed was	645	on	14-JAN-11
... highest number ready to be pickup was	4435	on	25-MAR-11

Female state inmates in jail awaiting pickup

March 20, 2009 through January 17, 2025



This graph shows, for each Friday since March 2009, the number of female state prisoners in local jails who were assigned to diagnostic centers but had not yet been picked up.

Female state inmates in jails waiting picked up **RISE BY** **7** **from** **46** **to** **53**

The highest number of female inmates waiting in jail was **424** **on** **01-FEB-13**

The lowest number of female inmates waiting in jail was **17** **on** **20-MAR-20**

Summary of housed prisoners, parolees, and probationers

Week ending	Prison	Parole	Probation			Prison+parole+probation	Jail		Total
	Total inmates	Revocation centers	Prob RSAT	Boot camp	Detention		Inmate backlog	Probationers	Prison+parole+probation+jail
26-Jan-2024	49243		1425		1273	51941	603	17	52561
02-Feb-2024	49176		1411		1327	51914	614	18	52546
09-Feb-2024	49108		1408		1335	51851	577	18	52446
16-Feb-2024	49160		1406		1343	51909	598	18	52525
23-Feb-2024	49131		1423		1346	51900	620	18	52538
01-Mar-2024	49200		1449		1358	52007	643	18	52668
08-Mar-2024	49218		1430		1400	52048	673	18	52739
15-Mar-2024	49255		1435		1412	52102	702	18	52822
22-Mar-2024	49304		1417		1404	52125	675	18	52818
29-Mar-2024	49434		1459		1392	52285	722	18	53025
05-Apr-2024	49389		1507		1409	52305	680	18	53003
12-Apr-2024	49458		1454		1406	52318	666	18	53002
19-Apr-2024	49474		1455		1417	52346	692	18	53056
26-Apr-2024	49533		1477		1436	52446	639	18	53103
03-May-2024	49550		1512		1421	52483	660	18	53161
10-May-2024	49492		1504		1422	52418	643	18	53079
17-May-2024	49615		1451		1410	52476	645	18	53139
24-May-2024	49652		1443		1453	52548	688	18	53254
31-May-2024	49785		1467		1444	52696	612	18	53326
07-Jun-2024	49769		1491		1410	52670	608	17	53295
14-Jun-2024	49784		1492		1419	52695	631	17	53343
21-Jun-2024	49907		1472		1410	52789	643	17	53449
28-Jun-2024	49944		1476		1369	52789	687	17	53493
05-Jul-2024	49897		1493		1369	52759	690	16	53465
12-Jul-2024	50027		1472		1392	52891	549	17	53457
19-Jul-2024	50007		1496		1418	52921	588	17	53526
26-Jul-2024	49939		1433		1447	52819	631	17	53467
02-Aug-2024	49931		1424		1438	52793	598	17	53408
09-Aug-2024	49870		1418		1417	52705	526	17	53248
16-Aug-2024	49881		1429		1400	52710	609	17	53336
23-Aug-2024	49950		1453		1388	52791	598	17	53406
30-Aug-2024	50050		1466		1417	52933	598	17	53548
06-Sep-2024	49948		1452		1456	52856	549	17	53422
13-Sep-2024	49996		1457		1449	52902	535	17	53454
20-Sep-2024	50025		1467		1428	52920	660	17	53597
27-Sep-2024	49948		1515		1424	52887	755	17	53659
04-Oct-2024	49700		1465		1324	52489	989	17	53495
11-Oct-2024	49904		1490		1297	52691	857	16	53564
18-Oct-2024	49937		1494		1257	52688	769	16	53473
25-Oct-2024	49914		1461		1245	52620	766	16	53402
01-Nov-2024	49982		1487		1290	52759	760	16	53535
08-Nov-2024	49986		1504		1307	52797	724	15	53536
15-Nov-2024	50025		1480		1374	52879	710	15	53604
22-Nov-2024	50076		1484		1384	52944	710	15	53669
29-Nov-2024	50000		1511		1405	52916	751	15	53682
06-Dec-2024	50030		1493		1392	52915	688	14	53617
13-Dec-2024	50065		1466		1387	52918	711	14	53643
20-Dec-2024	50089		1505		1370	52964	692	14	53670
27-Dec-2024	50093		1487		1357	52937	702	14	53653
03-Jan-2025	50009		1474		1349	52832	794	14	53640
10-Jan-2025	49957		1478		1312	52747	778	14	53539
17-Jan-2025	50011		1456		1309	52776	752	14	53542

Offenders housed in facilities for state prisoners

Week ending	In state prisons	In facilities other than state prisons						Total Inmates
		Transition centers	County prisons	Pre-rel centers	Private prisons	Inmate boot camps	Total others	
26-Jan-2024	34920	2233	4519		7571	0	14323	49243
02-Feb-2024	34889	2224	4509		7554	0	14287	49176
09-Feb-2024	34842	2208	4485		7573	0	14266	49108
16-Feb-2024	34875	2205	4508		7572	0	14285	49160
23-Feb-2024	34855	2215	4481		7580	0	14276	49131
01-Mar-2024	34885	2227	4497		7591	0	14315	49200
08-Mar-2024	34943	2226	4457		7592	0	14275	49218
15-Mar-2024	34936	2264	4446		7609	0	14319	49255
22-Mar-2024	34924	2323	4463		7594	0	14380	49304
29-Mar-2024	34993	2389	4450		7602	0	14441	49434
05-Apr-2024	34968	2415	4435		7571	0	14421	49389
12-Apr-2024	34979	2429	4473		7577	0	14479	49458
19-Apr-2024	34957	2461	4467		7589	0	14517	49474
26-Apr-2024	35020	2512	4410		7591	0	14513	49533
03-May-2024	35061	2528	4395		7566	0	14489	49550
10-May-2024	35022	2558	4364		7548	0	14470	49492
17-May-2024	35118	2584	4358		7555	0	14497	49615
24-May-2024	35109	2638	4355		7550	0	14543	49652
31-May-2024	35123	2674	4440		7548	0	14662	49785
07-Jun-2024	35023	2682	4494		7570	0	14746	49769
14-Jun-2024	34995	2718	4500		7571	0	14789	49784
21-Jun-2024	35048	2737	4524		7598	0	14859	49907
28-Jun-2024	35076	2740	4540		7588	0	14868	49944
05-Jul-2024	35064	2729	4531		7573	0	14833	49897
12-Jul-2024	35172	2754	4521		7580	0	14855	50027
19-Jul-2024	35164	2754	4505		7584	0	14843	50007
26-Jul-2024	35139	2751	4478		7571	0	14800	49939
02-Aug-2024	35134	2752	4502		7543	0	14797	49931
09-Aug-2024	35109	2749	4482		7529	1	14761	49870
16-Aug-2024	35109	2747	4489		7535	1	14772	49881
23-Aug-2024	35149	2756	4507		7537	1	14801	49950
30-Aug-2024	35243	2761	4517		7528	1	14807	50050
06-Sep-2024	35195	2716	4508		7528	1	14753	49948
13-Sep-2024	35217	2752	4493		7533	1	14779	49996
20-Sep-2024	35238	2746	4506		7534	1	14787	50025
27-Sep-2024	35230	2724	4475		7518	1	14718	49948
04-Oct-2024	35111	2663	4437		7488	1	14589	49700
11-Oct-2024	35197	2679	4493		7534	1	14707	49904
18-Oct-2024	35211	2739	4469		7517	1	14726	49937
25-Oct-2024	35182	2745	4466		7520	1	14732	49914
01-Nov-2024	35239	2765	4442		7535	1	14743	49982
08-Nov-2024	35246	2756	4434		7549	1	14740	49986
15-Nov-2024	35323	2747	4403		7551	1	14702	50025
22-Nov-2024	35354	2755	4428		7538	1	14722	50076
29-Nov-2024	35292	2750	4431		7526	1	14708	50000
06-Dec-2024	35285	2756	4451		7537	1	14745	50030
13-Dec-2024	35339	2763	4429		7533	1	14726	50065
20-Dec-2024	35382	2755	4417		7534	1	14707	50089
27-Dec-2024	35380	2734	4433		7545	1	14713	50093
03-Jan-2025	35335	2721	4419		7533	1	14674	50009
10-Jan-2025	35311	2691	4428		7526	1	14646	49957
17-Jan-2025	35313	2677	4467		7553	1	14698	50011

Offenders waiting in local jails for state facilities

Week ending	Probationers waiting in jail				State prisoners waiting in jail					Assigned females
	.. for PDCs	.. for RSAT	.. for boot camps	Total	Total backlog	Not yet assigned	In adm process	Delayed transport	Ready for pickup	
26-Jan-2024	13	3	1	17	603	37	566	205	361	52
02-Feb-2024	14	3	1	18	614	37	577	208	369	50
09-Feb-2024	14	3	1	18	577	37	540	197	343	41
16-Feb-2024	14	3	1	18	598	36	562	199	363	43
23-Feb-2024	14	3	1	18	620	35	585	196	389	53
01-Mar-2024	14	3	1	18	643	40	603	188	415	54
08-Mar-2024	14	3	1	18	673	37	636	185	451	57
15-Mar-2024	14	3	1	18	702	37	665	188	477	52
22-Mar-2024	14	3	1	18	675	37	638	195	443	65
29-Mar-2024	14	3	1	18	722	23	699	192	507	61
05-Apr-2024	14	3	1	18	680	23	657	190	467	49
12-Apr-2024	14	3	1	18	666	22	644	187	457	47
19-Apr-2024	14	3	1	18	692	25	667	185	482	53
26-Apr-2024	14	3	1	18	639	26	613	189	424	58
03-May-2024	14	3	1	18	660	24	636	193	443	69
10-May-2024	14	3	1	18	643	23	620	193	427	71
17-May-2024	14	3	1	18	645	23	622	196	426	57
24-May-2024	14	3	1	18	688	24	664	191	473	67
31-May-2024	14	3	1	18	612	25	587	195	392	63
07-Jun-2024	13	3	1	17	608	25	583	193	390	57
14-Jun-2024	13	3	1	17	631	24	607	188	419	43
21-Jun-2024	13	3	1	17	643	24	619	187	432	58
28-Jun-2024	13	3	1	17	687	26	661	189	472	64
05-Jul-2024	12	3	1	16	690	27	663	193	470	50
12-Jul-2024	13	3	1	17	549	28	521	188	333	41
19-Jul-2024	13	3	1	17	588	28	560	180	380	50
26-Jul-2024	13	3	1	17	631	29	602	183	419	54
02-Aug-2024	13	3	1	17	598	27	571	181	390	59
09-Aug-2024	13	3	1	17	526	28	498	179	319	46
16-Aug-2024	13	3	1	17	609	24	585	184	401	69
23-Aug-2024	13	3	1	17	598	24	574	185	389	61
30-Aug-2024	13	3	1	17	598	25	573	186	387	63
06-Sep-2024	13	3	1	17	549	25	524	182	342	59
13-Sep-2024	13	3	1	17	535	25	510	183	327	56
20-Sep-2024	13	3	1	17	660	26	634	182	452	84
27-Sep-2024	13	3	1	17	755	27	728	184	544	52
04-Oct-2024	13	3	1	17	989	25	964	183	781	79
11-Oct-2024	12	3	1	16	857	26	831	185	646	69
18-Oct-2024	12	3	1	16	769	25	744	188	556	57
25-Oct-2024	12	3	1	16	766	26	740	192	548	57
01-Nov-2024	12	3	1	16	760	25	735	186	549	69
08-Nov-2024	12	2	1	15	724	25	699	189	510	53
15-Nov-2024	12	2	1	15	710	25	685	187	498	53
22-Nov-2024	12	2	1	15	710	24	686	190	496	39
29-Nov-2024	12	2	1	15	751	24	727	187	540	43
06-Dec-2024	11	2	1	14	688	24	664	188	476	48
13-Dec-2024	11	2	1	14	711	21	690	184	506	57
20-Dec-2024	11	2	1	14	692	22	670	180	490	54
27-Dec-2024	11	2	1	14	702	23	679	178	501	41
03-Jan-2025	11	2	1	14	794	22	772	179	593	47
10-Jan-2025	11	2	1	14	778	22	756	180	576	46
17-Jan-2025	11	2	1	14	752	22	730	182	548	53