

# Friday Report – overview and contents

The pages in The Friday Report are about adult offenders in Georgia’s prisons and jails. They contain statistical snapshots and trends in the populations and movements of offenders in the state prison system, on probation, on parole, and in local jails. Information comes from databases of the Georgia Department of Corrections (GDC) and the Board of Pardons and Paroles, and from data provided by local jailers. Information is summarized into tables in the GDC/Parole Data Warehouse, and is extracted into these pages each Friday. Pages are organized according to the table that supplied the data.

The Monthly Research Table, named “MO_RESRCH” or simply “MO”, contains data about state prisoners, grouped into statistically interesting categories. The table contains one record per month, from January 2000 to the present. Despite its being “monthly”, it is updated weekly, because some data trickles in for several weeks before it becomes stable history.	
Page	Contents
MO-01	Clemencies and maxouts. Monthly graph from 2000 to present shows the monthly departures from prison via actions by the Georgia Parole Board (clemencies), and via service of 100% of the court ordered sentence (maxouts)
MO-02	48 months of releases. Table shows counts and percentages of releases via clemencies and maxouts, with and without probation to follow, for each of the past 48 months.
MO-03	Methamphetamine. Monthly graph from 2000 to present shows admissions, departures, population, and percent of population of inmates with a current offense of methamphetamine possession, sale, manufacturing, or trafficking, and the changing racial composition of the methamphetamine population.
MO-04	Non-violent first incarcerants. Monthly graph from 2000 to present shows admissions, departures, population, and percent of population of inmates without violent or sex crimes, who are serving their first Georgia felony incarceration.
MO-05	Seven Deadly Sins. Monthly graph from 2000 to present shows admissions, departures, population, and percent of population of inmates convicted of kidnapping, armed robbery, rape, aggravated sodomy, aggravated sexual battery, and aggravated child molestation, for whom especially severe penalties are prescribed.
MO-06	48 months of inmate subpopulations. Table shows number and percentage of white and non-white inmates with methamphetamine offenses, and non-violent first incarcerants, and inmates convicted of the Seven Deadly Sins.
MO-07	Inmate age overview. Line graph shows the average age of the inmate population, by month from 2000 to the present. Pie chart shows the number of currently active inmates in their teens, twenties, thirties, forties, fifties, and age sixty+.
MO-08	Counts by age group. Graphs show the count, by month from 2000 to the present, of inmates in their teens, twenties, thirties, forties, fifties, and age sixty+.
MO-09	Percentages by age group. Graphs show the <i>percentages</i> , by month from 2000 to the present, of inmates in their teens, twenties, thirties, forties, fifties, and age sixty+.
MO-10	48 months of inmate ages. Table shows average age of the standing population, and counts and percentages of teens, twenties, thirties, forties, fifties, and sixty+, for each of the past 48 months.

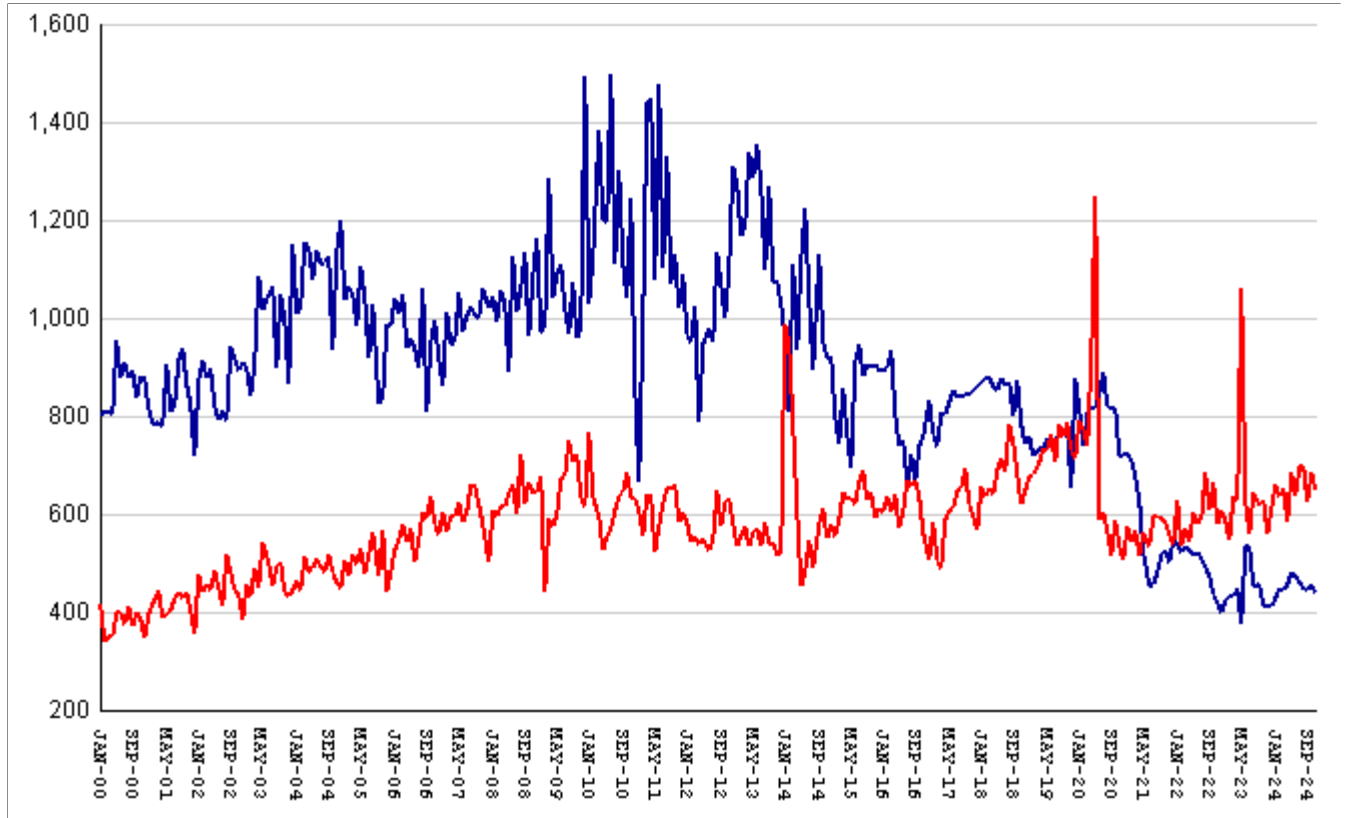
# Friday Report – overview and contents *(continued)*

The MSR Table is based on the Management Summary Report (MSR), a snapshot report posted each week in GDC's Scribe database. MSR_RESRCH gathers that data into weekly trends, with one record for each Friday since March 20th, 2009.	
Page	Contents
MSR-01	All housed offenders. Weekly graph from March 20, 2009 to present, showing counts of inmates in state prisons, transitional centers, county prisons, private prisons, inmate boot camps, parole revocation centers, probation Residential Substance Abuse Treatment (RSAT), probation boot camps, probation detention centers, plus the inmate jail backlog and probationers in jail waiting for state facilities.
MSR-02	Probationers in jail. Weekly graph from March 20, 2009 to present, showing counts of probationers in local jails awaiting placement in probation detention centers, probation RSAT centers, and probation boot camps.
MSR-03	State inmates in jail. Weekly graph from March 20, 2009 to present, showing counts of state inmates in local jails awaiting placement in state prison facilities – including those who have not yet been assigned to a diagnostic center, those whose transportation has been delayed for some reason, and those who are ready to be picked up.
MSR-04	Female state inmates in jail. Weekly graph from March 20, 2009 to present, showing counts of female state inmates awaiting placement in a state prison for females.
MSR-05	52-week table: housed offenders. Data for each of the past 52 weeks, showing total prison inmates, parolees in revocation centers, probationers in RSAT/boot camp/detention centers, inmate jail backlog, probationers in jail waiting for facilities, with subtotals.
MSR-06	52-week table: state prisoners. Data for each of the past 52 weeks, showing inmates in state prisons, transition centers, county prisons, pre-release centers, private prisons, and inmate boot camps, with subtotals.
MSR-07	52-week table: waiting in jail. Data for each of the past 52 weeks, showing probationers waiting for detention centers, RSAT, and boot camp; and state prisoners not yet assigned to diagnostic centers, in admission process, with delayed transport, and ready for pickup, with subtotals.

The DCA table consists mainly of data submitted from each of Georgia's 140+ local jails, via the Georgia Crime Information Center (GCIC) to the Georgia Department of Community Affairs (DCA), which publishes its <u><a href="#">County Jail Inmate Population Report</a></u> on its web site each month. GDC has collected summary statewide data from this report every month since its inception in January, 1993. The table also contains the inmate jail backlog as computed by GDC for the last Friday of each month, for comparison with the jailers' count of state inmates. Although nominally a monthly table, DCA_RESRCH is updated weekly to insure that the DCA data is correctly synchronized with the GDC jail backlog data.	
Page	Contents
DCA-01	Jail composition. Monthly graph from 1993 to the present shows trends in the numbers of unsentenced inmates, state inmates, county inmates, and other inmates.
DCA-02	Two views of jail backlog. Monthly graph from 1993 to present compares jailers' count of "state inmates" with GDC's count of the "inmate jail backlog", and explains that both are valid counts of different phenomena.
DCA-03	48-month table: local jails. Data from Georgia jailers for each of the past 48 months, showing total jail population, capacity, utilization, and number and percent of unsentenced inmates, state inmates, county inmates, and other inmates.

# Releases by clemency and maxout, Jan-2000 to Nov-2024

There are two main ways of being released from a Georgia prison -- by actions of the Board of Pardons and Paroles ("Clemencies") and by service of 100% of the court-ordered sentences ("Maxouts"). "Clemency" includes paroles, reprieves, commutations, and transfer to other confinement prior to expiration of sentence. "Other Releases" includes deaths, and sentences modified or overturned by the courts. Clemencies and maxouts may or may not be followed by periods of probation.



A. Clemency with probation to follow	falls by	10	from	401	to	391
B. Clemency only	falls by	7	from	58	to	51
C. Maxout with probation to follow	falls by	40	from	629	to	589
D. Maxout only (unsupervised)	...	...	...	level	at	58
E. Other releases	falls by	5	from	28	to	23
F. Total releases (A+B+C+D+E)	falls by	62	from	1174	to	1112
<b>G. Total clemencies (A+B) (top line)</b>	<b>falls by</b>	<b>17</b>	<b>from</b>	<b>459</b>	<b>to</b>	<b>442</b>
<b>H. Total maxouts(C+D) (bottom line)</b>	<b>falls by</b>	<b>40</b>	<b>from</b>	<b>687</b>	<b>to</b>	<b>647</b>
I. % of releases by clemency (G/F)	RISES BY	.65%	from	39.1%	to	39.75%
J. % of releases by maxout (H/F)	falls by	.34%	from	58.52%	to	58.18%
K. Supervised releases (A+B+C)	falls by	57	from	1088	to	1031
L. % unsupervised releases (D/F)	RISES BY	.28%	from	4.94%	to	5.22%
M. % supervised releases (K/F)	RISES BY	.05%	from	92.67%	to	92.72%

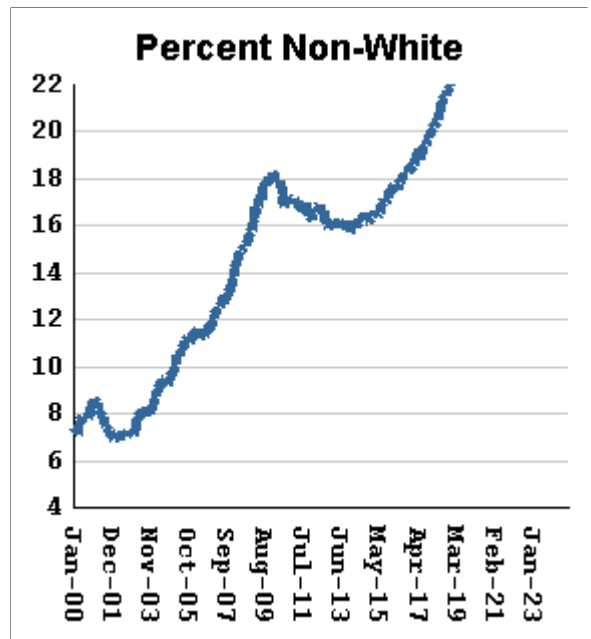
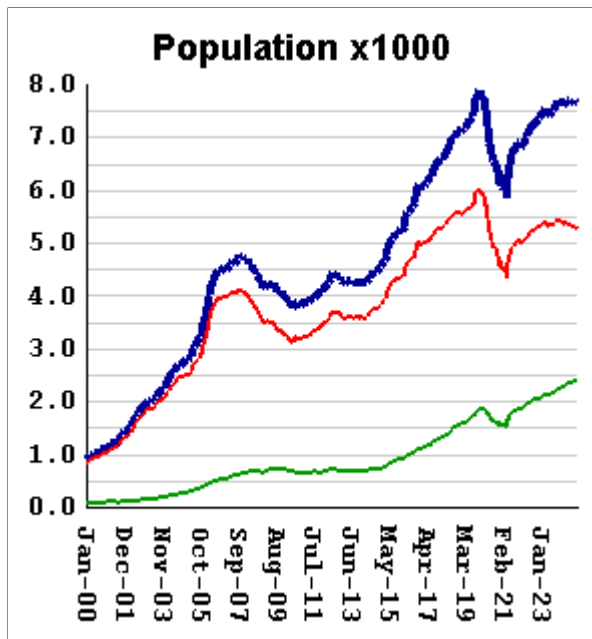
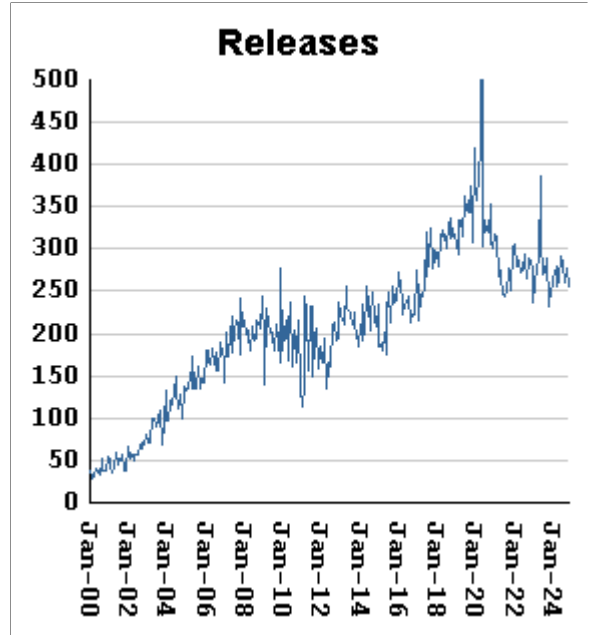
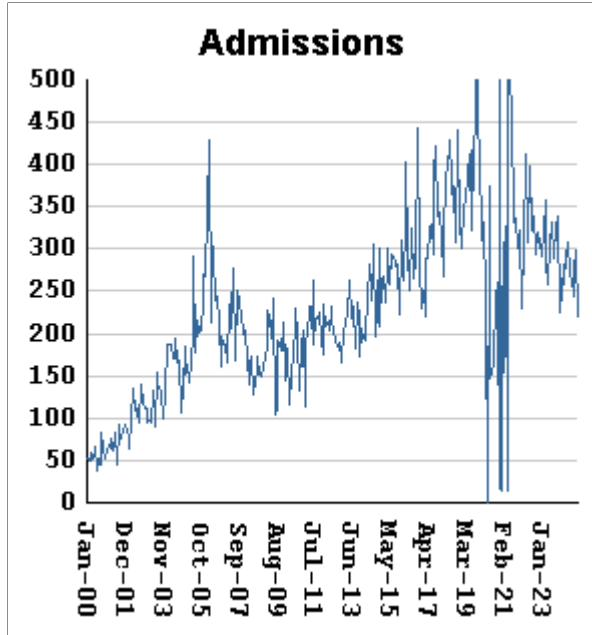
## Monthly releases from prison by type of release, for the past 48 months

Month	A	B	C	D	E	F	G	H	I	J
	Clemency + Prob	Clemency Only	Maxout + Prob	Maxout Only	Other Rels	Total Releases (A+B+C+D+E)	Total Clemency (A+B)	Total Maxout (C+D)	Percent Clemency (G/F)	Percent Maxout (H/F)
Dec-20	622	100	446	60	18	1246	722	506	57.95%	40.61%
Jan-21	634	91	516	58	21	1320	725	574	54.92%	43.48%
Feb-21	615	97	481	62	20	1275	712	543	55.84%	42.59%
Mar-21	569	107	496	70	16	1258	676	566	53.74%	44.99%
Apr-21	531	98	454	61	24	1168	629	515	53.85%	44.09%
May-21	445	78	508	54	21	1106	523	562	47.29%	50.81%
Jun-21	367	85	467	68	21	1008	452	535	44.84%	53.08%
Jul-21	391	66	534	63	19	1073	457	597	42.59%	55.64%
Aug-21	410	71	532	63	28	1104	481	595	43.57%	53.89%
Sep-21	441	78	522	68	32	1141	519	590	45.49%	51.71%
Oct-21	447	78	526	56	21	1128	525	582	46.54%	51.60%
Nov-21	425	79	493	65	18	1080	504	558	46.67%	51.67%
Dec-21	467	84	483	56	18	1108	551	539	49.73%	48.65%
Jan-22	458	81	552	75	26	1192	539	627	45.22%	52.60%
Feb-22	443	81	465	71	24	1084	524	536	48.34%	49.45%
Mar-22	460	73	514	57	16	1120	533	571	47.59%	50.98%
Apr-22	457	71	471	70	16	1085	528	541	48.66%	49.86%
May-22	440	78	541	63	26	1148	518	604	45.12%	52.61%
Jun-22	459	62	527	58	21	1127	521	585	46.23%	51.91%
Jul-22	443	67	529	60	14	1113	510	589	45.82%	52.92%
Aug-22	426	66	617	67	21	1197	492	684	41.10%	57.14%
Sep-22	397	78	551	57	18	1101	475	608	43.14%	55.22%
Oct-22	374	61	606	60	23	1124	435	666	38.70%	59.25%
Nov-22	366	53	524	54	19	1016	419	578	41.24%	56.89%
Dec-22	345	57	551	58	28	1039	402	609	38.69%	58.61%
Jan-23	375	51	527	59	23	1035	426	586	41.16%	56.62%
Feb-23	389	45	496	50	17	997	434	546	43.53%	54.76%
Mar-23	376	56	574	62	24	1092	432	636	39.56%	58.24%
Apr-23	390	57	574	53	26	1100	447	627	40.64%	57.00%
May-23	328	46	933	128	20	1455	374	1061	25.70%	72.92%
Jun-23	462	71	568	58	19	1178	533	626	45.25%	53.14%
Jul-23	462	72	516	43	25	1118	534	559	47.76%	50.00%
Aug-23	403	51	593	51	22	1120	454	644	40.54%	57.50%
Sep-23	407	52	578	42	10	1089	459	620	42.15%	56.93%
Oct-23	364	50	577	52	31	1074	414	629	38.55%	58.57%
Nov-23	355	56	497	62	19	989	411	559	41.56%	56.52%
Dec-23	367	46	554	58	21	1046	413	612	39.48%	58.51%
Jan-24	368	61	601	60	32	1122	429	661	38.24%	58.91%
Feb-24	395	52	577	60	24	1108	447	637	40.34%	57.49%
Mar-24	380	63	589	64	20	1116	443	653	39.70%	58.51%
Apr-24	412	45	528	57	33	1075	457	585	42.51%	54.42%
May-24	425	57	614	70	26	1192	482	684	40.44%	57.38%
Jun-24	409	64	575	61	23	1132	473	636	41.78%	56.18%
Jul-24	400	61	631	67	38	1197	461	698	38.51%	58.31%
Aug-24	382	67	641	58	19	1167	449	699	38.47%	59.90%
Sep-24	381	63	560	66	34	1104	444	626	40.22%	56.70%
Oct-24	401	58	629	58	28	1174	459	687	39.10%	58.52%
Nov-24	391	51	589	58	23	1112	442	647	39.75%	58.18%

# Inmates with meth crimes, by month, Jan-2000 to Nov-2024

Methamphetamine is one of the most addictive drugs ever known. At first it induces intense euphoria, but with continued use causes severe depression and physical deterioration, including the dental catastrophe known as "meth mouth".

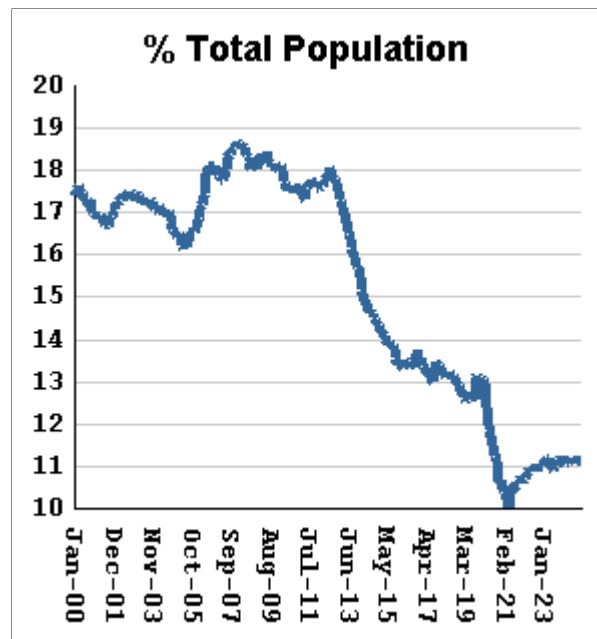
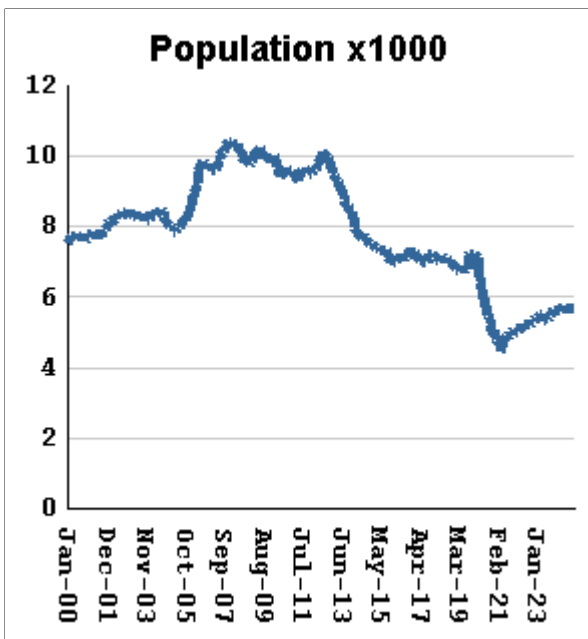
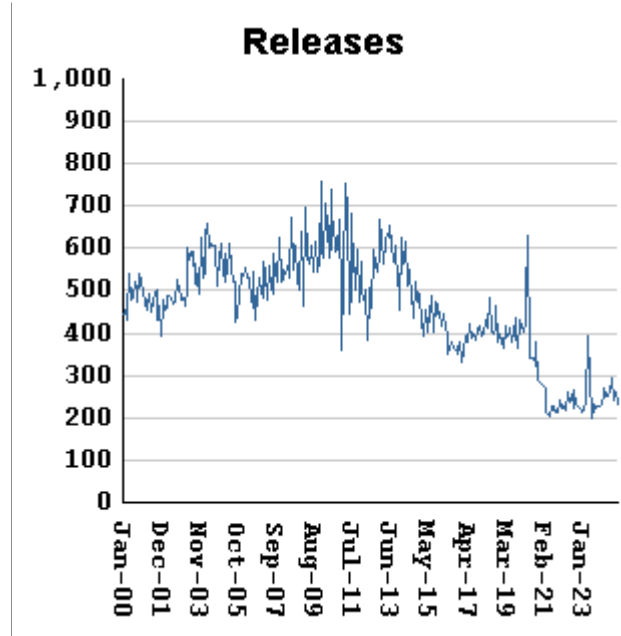
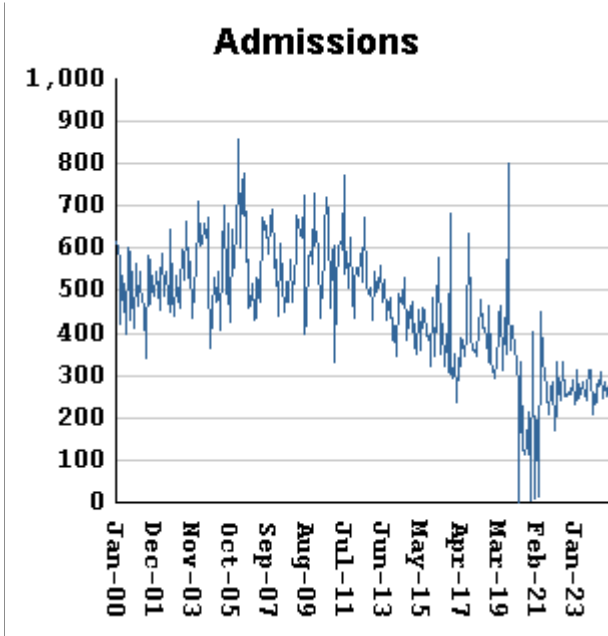
Georgia's meth epidemic peaked in 2007-2008, then declined, but is again growing. It started in the predominantly white northern counties, with blacks accounting for only about 5% of convictions. But black usage has expanded, and now accounts for about 15% of convictions.



Methamphetamine admissions	fall by	78	from	298	to	220
Methamphetamine releases	fall by	20	from	277	to	257
Methamphetamine population	falls by	37	from	7692	to	7655
Meth white population	falls by	35	from	5320	to	5285
Meth non-white population	falls by	2	from	2372	to	2370
Percent meth inmates who are non-white	RISES BY	.12 %	from	30.84%	to	30.96%

# Non-violent first-incarcerants, by month, Jan-2000 to Nov-2024

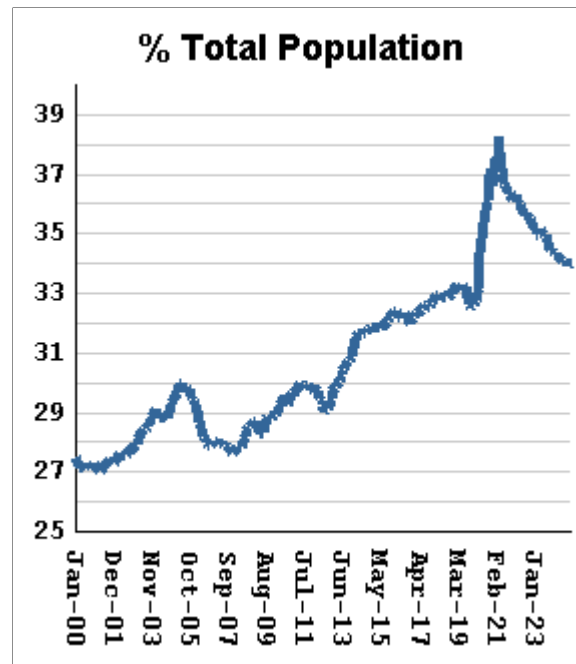
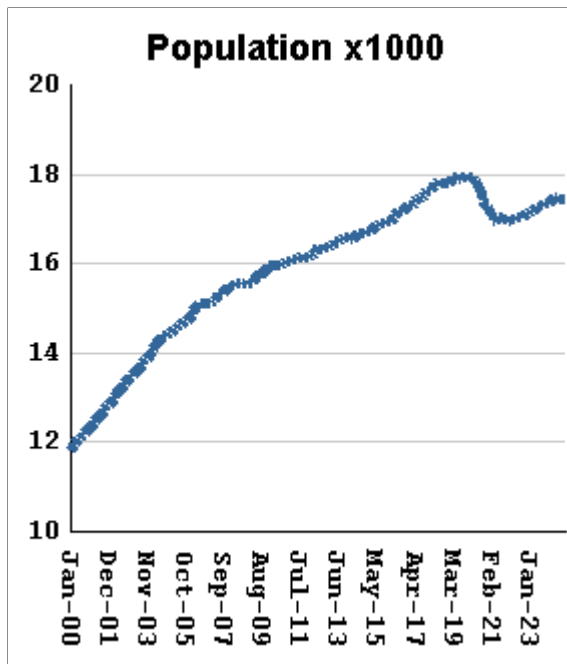
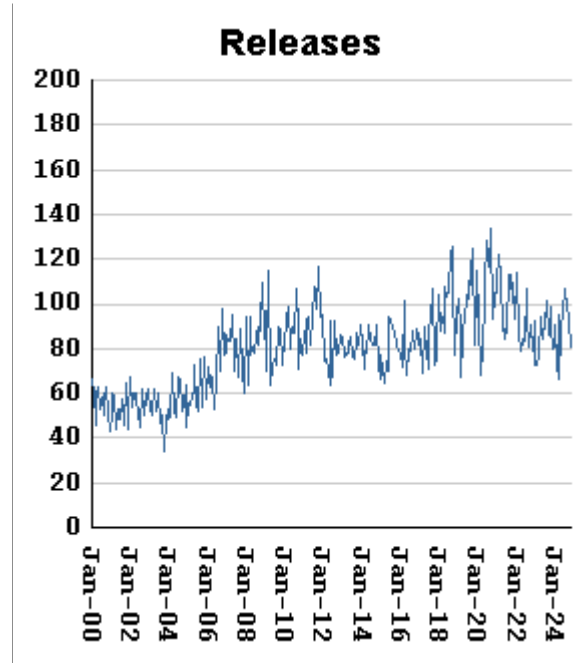
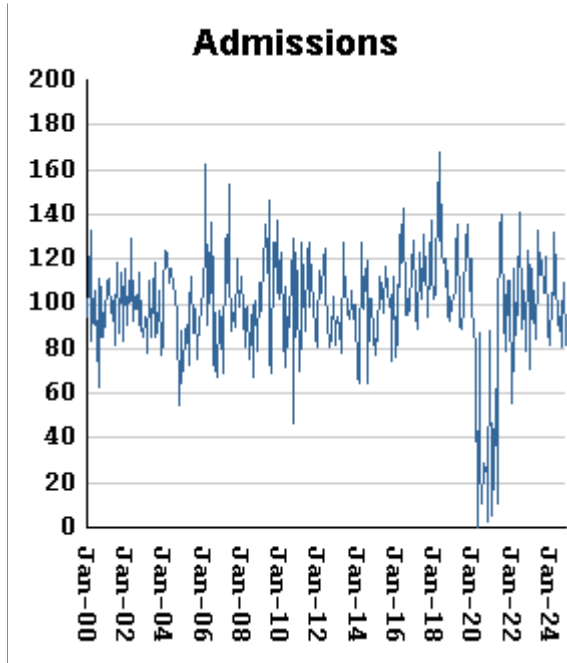
Historically, about one in six Georgia prison inmates has been a first-time incarcerant with a non-violent crime. In 2012 Georgia passed HB1176, which aimed to curb the growth of prison population by steering the least dangerous, least hardened offenders away from prison through pre-trial intervention, diversion, drug courts and treatment programs, and raising the dollar thresholds that define property felonies. The expectation is that over time, these measures will reduce the percentage of first-time non-violent incarcerants in prison.



Non-viol/1st-Incar admissions	fall by	47	from	277	to	230
Non-viol/1st-Incar releases	fall by	28	from	262	to	234
Non-viol/1st-Incar population	falls by	4	from	5713	to	5709
Non-viol/1st-Incar % of total population	falls by	0 %	...	11.12%	at	11.12%

# "Seven Deadly Sins" by month, Jan-2000 to Nov-2024

Tough legislation in 1995 imposed mandatory ten-year minimum terms for kidnapping, armed robbery, rape, aggravated sodomy, aggravated sexual battery, and aggravated child molestation, and a minimum of 25 years for murder. A second conviction resulted in life without parole. As predicted, longer prison terms caused population to climb steeply for about a decade. It then began to level off, as releases started catching up with admissions. The 2008 dip in percentage of total population (bottom right) was caused by the surge of methamphetamine convictions (Page MO-03). Note: these graphs include inmates convicted before 1995.



"Seven Deadly Sin" admissions	fall by	27	from	109	to	82
"Seven Deadly Sin" releases	fall by	11	from	92	to	81
"Seven Deadly Sin" population	RISES BY	1	from	17456	to	17457
"Seven Deadly Sin" % of total population	RISES BY	.04 %	from	33.96%	to	34%

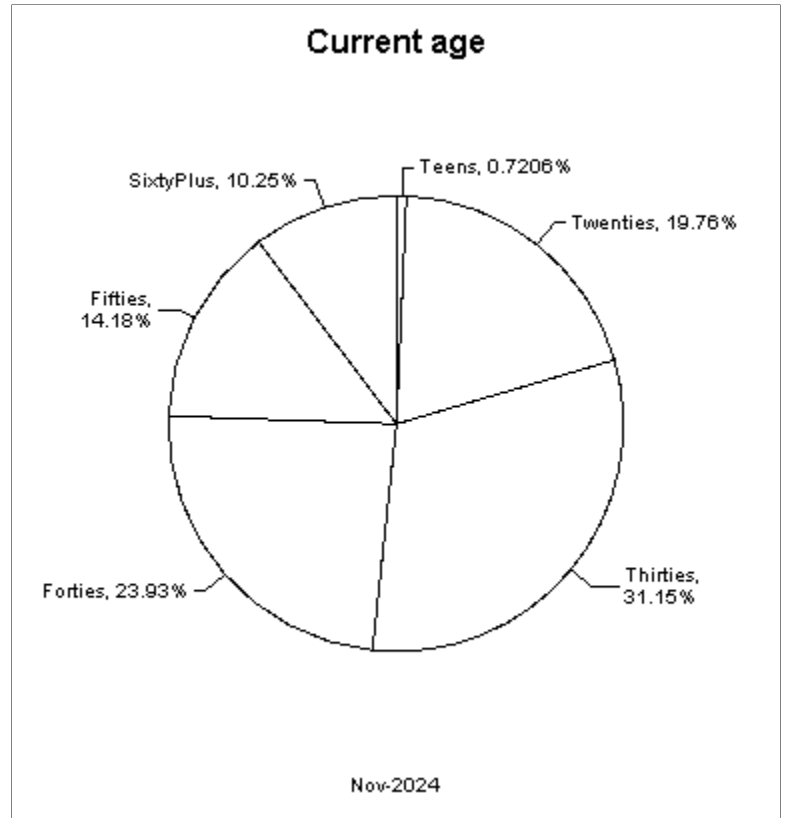
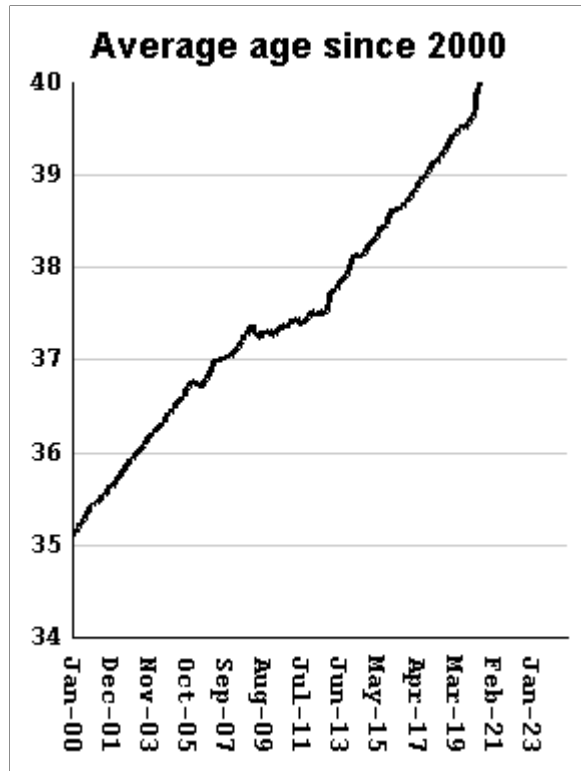
## Inmate subpopulation counts and percentages, for the past 48 months

Month	Methamphetamine						1st Incar Non-Violent		Seven Deadly Sins	
	Total Number	Total Percent	White Number	White Percent	Non White Number	Non White Percent	Number	Percent	Number	Percent
Dec-20	6359	13.47%	4749	74.68%	1617	25.43%	5041	10.68%	17276	36.59%
Jan-21	6056	13.18%	4523	74.69%	1540	25.43%	4771	10.39%	17171	37.38%
Feb-21	6034	13.28%	4521	74.93%	1570	26.02%	4684	10.31%	17077	37.58%
Mar-21	6093	13.42%	4506	73.95%	1594	26.16%	4629	10.20%	17028	37.51%
Apr-21	5834	13.16%	4306	73.81%	1535	26.31%	4428	9.99%	16951	38.23%
May-21	6175	13.68%	4606	74.59%	1639	26.54%	4669	10.34%	16949	37.54%
Jun-21	6440	14.03%	4754	73.82%	1726	26.80%	4789	10.43%	16999	37.03%
Jul-21	6658	14.32%	4891	73.46%	1774	26.64%	4872	10.48%	17050	36.67%
Aug-21	6736	14.44%	4947	73.44%	1805	26.80%	4909	10.52%	17024	36.50%
Sep-21	6804	14.55%	4987	73.30%	1824	26.81%	4943	10.57%	17021	36.39%
Oct-21	6827	14.59%	5005	73.31%	1829	26.79%	4941	10.56%	16987	36.30%
Nov-21	6892	14.69%	5058	73.39%	1850	26.84%	4996	10.65%	16991	36.22%
Dec-21	6910	14.69%	5065	73.30%	1852	26.80%	5038	10.71%	17008	36.15%
Jan-22	6833	14.64%	5016	73.41%	1852	27.10%	4986	10.68%	16950	36.31%
Feb-22	6862	14.69%	5042	73.48%	1878	27.37%	5002	10.71%	16948	36.27%
Mar-22	6986	14.83%	5078	72.69%	1915	27.41%	5107	10.84%	16977	36.04%
Apr-22	7009	14.86%	5093	72.66%	1923	27.44%	5150	10.92%	16984	36.00%
May-22	7049	14.92%	5118	72.61%	1955	27.73%	5131	10.86%	17003	35.99%
Jun-22	7170	15.04%	5190	72.38%	1989	27.74%	5224	10.96%	17061	35.79%
Jul-22	7199	15.06%	5198	72.20%	2008	27.89%	5218	10.92%	17045	35.66%
Aug-22	7254	15.17%	5252	72.40%	2031	28.00%	5251	10.98%	17040	35.64%
Sep-22	7284	15.20%	5234	71.86%	2056	28.23%	5238	10.93%	17065	35.62%
Oct-22	7291	15.22%	5260	72.14%	2062	28.28%	5265	10.99%	17053	35.59%
Nov-22	7326	15.20%	5309	72.47%	2060	28.12%	5295	10.98%	17098	35.47%
Dec-22	7359	15.17%	5305	72.09%	2060	27.99%	5359	11.05%	17118	35.28%
Jan-23	7415	15.25%	5337	71.98%	2098	28.29%	5378	11.06%	17116	35.19%
Feb-23	7479	15.32%	5370	71.80%	2129	28.47%	5407	11.07%	17159	35.14%
Mar-23	7557	15.37%	5420	71.72%	2143	28.36%	5495	11.18%	17178	34.95%
Apr-23	7552	15.36%	5426	71.85%	2132	28.23%	5500	11.19%	17168	34.93%
May-23	7423	15.16%	5336	71.88%	2117	28.52%	5367	10.96%	17200	35.14%
Jun-23	7424	15.09%	5308	71.50%	2122	28.58%	5357	10.89%	17248	35.05%
Jul-23	7486	15.16%	5368	71.71%	2159	28.84%	5409	10.96%	17269	34.98%
Aug-23	7503	15.17%	5336	71.12%	2172	28.95%	5428	10.98%	17287	34.96%
Sep-23	7503	15.12%	5333	71.08%	2174	28.98%	5464	11.01%	17306	34.88%
Oct-23	7600	15.22%	5400	71.05%	2213	29.12%	5555	11.12%	17317	34.67%
Nov-23	7681	15.24%	5447	70.92%	2238	29.14%	5643	11.19%	17348	34.41%
Dec-23	7661	15.19%	5430	70.88%	2235	29.17%	5623	11.15%	17356	34.41%
Jan-24	7647	15.15%	5416	70.83%	2258	29.53%	5642	11.18%	17347	34.37%
Feb-24	7653	15.14%	5398	70.53%	2258	29.50%	5626	11.13%	17382	34.38%
Mar-24	7632	15.05%	5360	70.23%	2275	29.81%	5636	11.11%	17391	34.29%
Apr-24	7670	15.04%	5369	70.00%	2315	30.18%	5661	11.10%	17457	34.23%
May-24	7714	15.07%	5376	69.69%	2341	30.35%	5718	11.17%	17482	34.15%
Jun-24	7691	15.01%	5359	69.68%	2335	30.36%	5700	11.12%	17475	34.11%
Jul-24	7671	14.97%	5331	69.50%	2364	30.82%	5686	11.09%	17462	34.07%
Aug-24	7654	14.93%	5299	69.23%	2357	30.79%	5696	11.11%	17445	34.02%
Sep-24	7671	14.98%	5300	69.09%	2372	30.92%	5698	11.13%	17439	34.05%
Oct-24	7692	14.97%	5320	69.16%	2372	30.84%	5713	11.12%	17456	33.96%
Nov-24	7655	14.91%	5285	69.04%	2370	30.96%	5709	11.12%	17457	34.00%



# Overview of inmate age statistics, Jan-2000 to Nov-2024

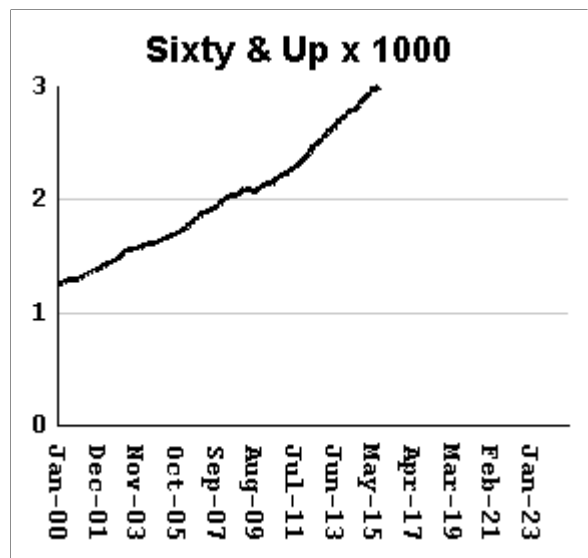
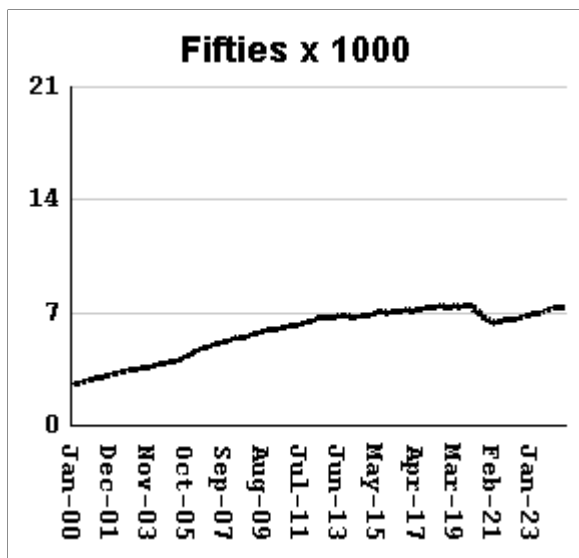
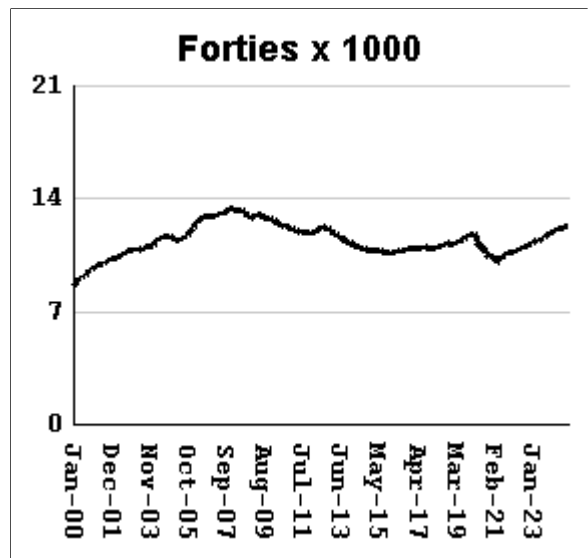
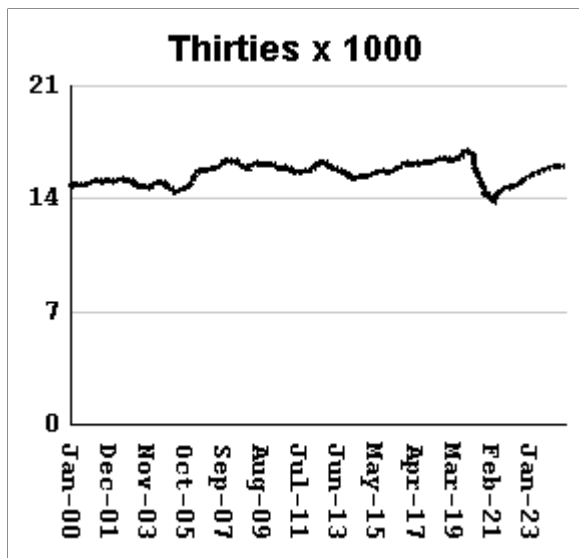
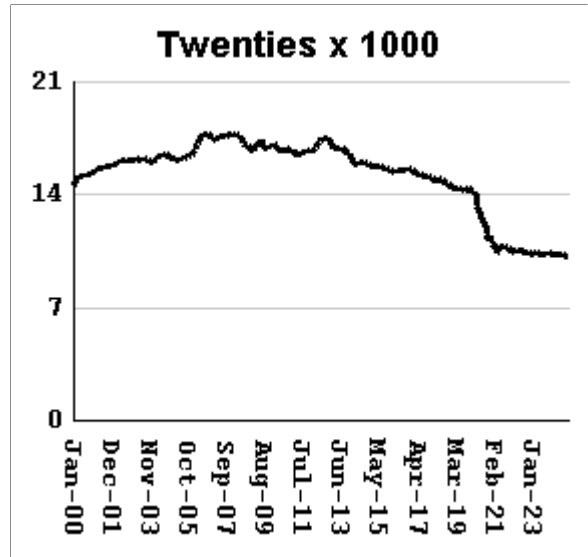
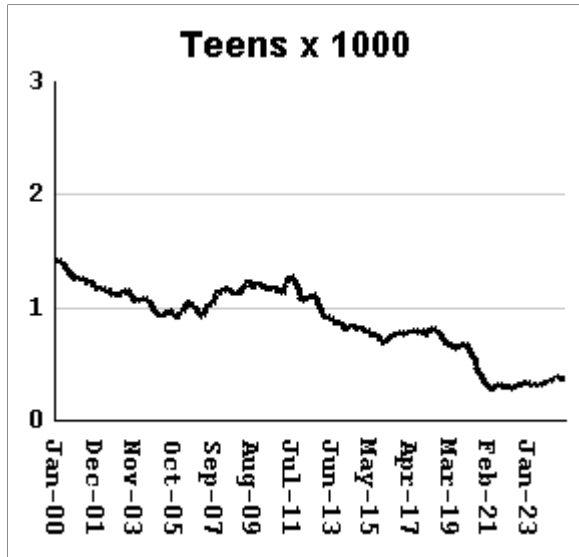
The "aging inmate population" is a concern in correctional systems throughout America, including Georgia. Here, the increase in inmate age is the result of several factors. Teenagers have been steered away from prison by increased usage of probation and other alternatives, at least for their first convictions. And there has been a surge of middle-aged male sex offenders due to the expanding "It's OK to tell" ethos. But most importantly, more severe sentence lengths and release policies have greatly increased the length of time that most offenders -- especially violent ones -- spend in prison, thereby increasing their average age.



Average age of active inmates	RISES BY	.04	from	41.68	to	41.72
Number in their teens	falls by	5	from	375	to	370
Percentage in their teens	falls by	.01%	from	.73%	to	0.72%
Number in their twenties	falls by	68	from	10,217	to	10,149
Percentage in their twenties	falls by	0.12%	from	19.88%	to	19.76%
Number in their thirties	falls by	10	from	16,005	to	15,995
Percentage in their thirties	RISES BY	0.01%	from	31.14%	to	31.15%
Number in their forties	RISES BY	33	from	12,254	to	12,287
Percentage in their forties	RISES BY	0.09%	from	23.84%	to	23.93%
Number in their fifties	falls by	35	from	7318	to	7,283
Percentage in their fifties	falls by	0.06%	from	14.24%	to	14.18%
Number age sixty and up	RISES BY	37	from	5228	to	5,265
Percentage age sixty and up	RISES BY	.08%	from	10.17%	to	10.25%

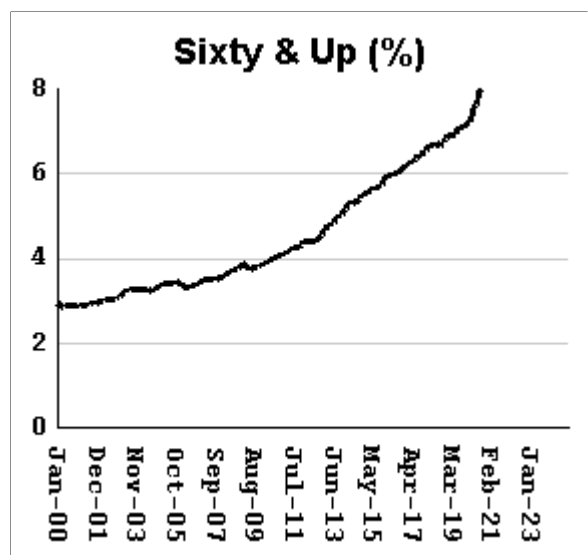
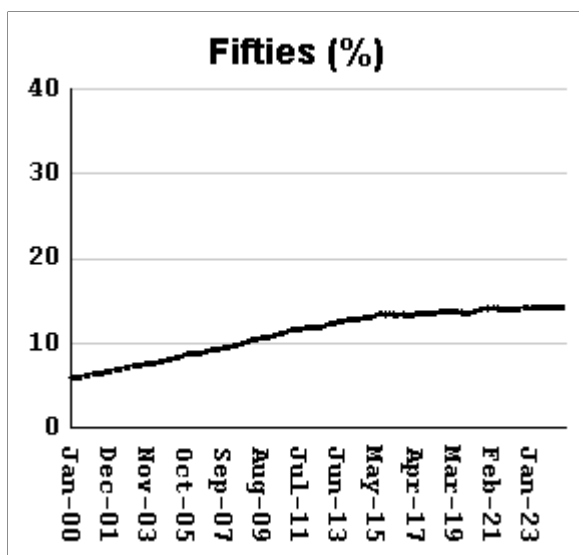
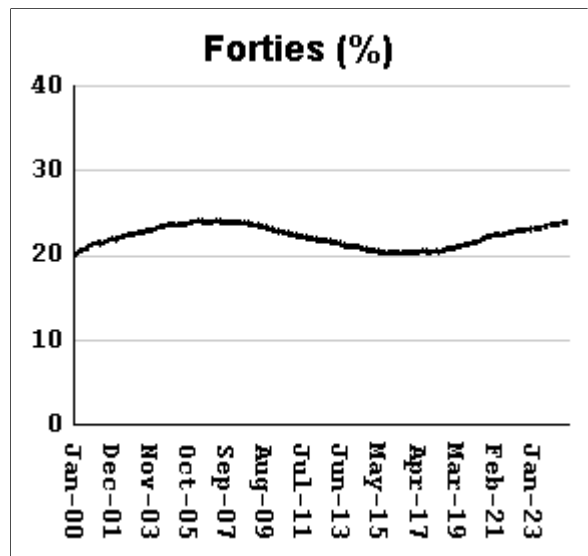
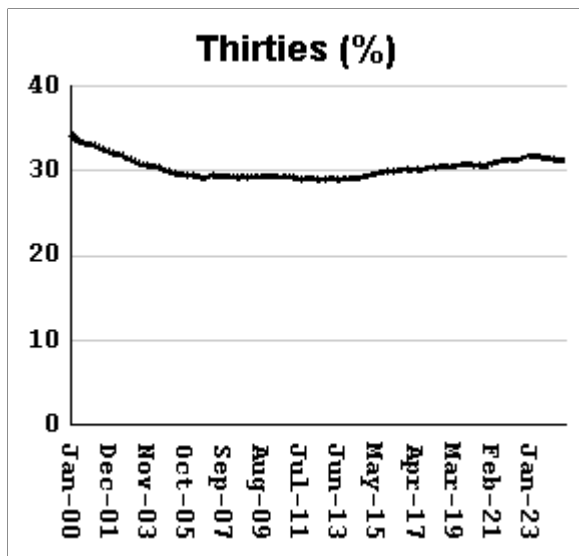
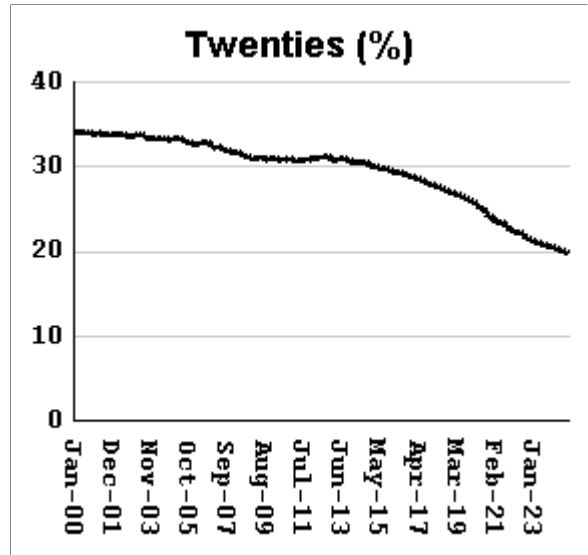
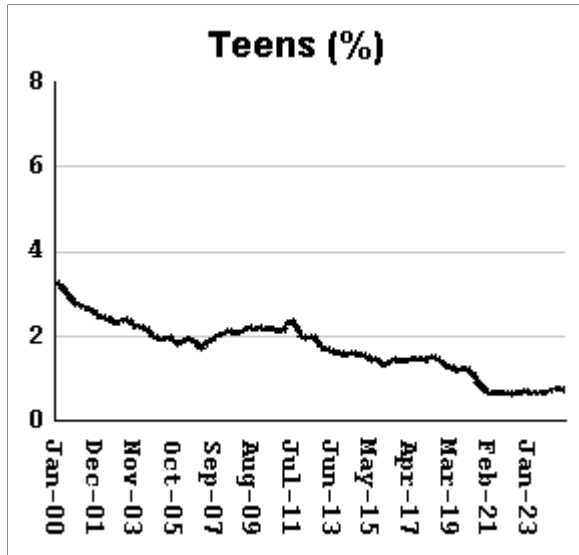
# Monthly counts of inmates by age group, Jan-2000 to Nov-2024

Y-axis of Twenties/Thirties/Forties/Fifties runs from 0 to 21,000. Y-axis of Teens/Sixty+ runs from 0 to 3,000.



# Monthly percentages of inmates by age group, Jan-2000 to Nov-2024

Y-axis of Twenties/Thirties/Forties/Fifties runs from 0% to 40%. Y-axis of Teens/Sixty+ runs from 0% to 8%

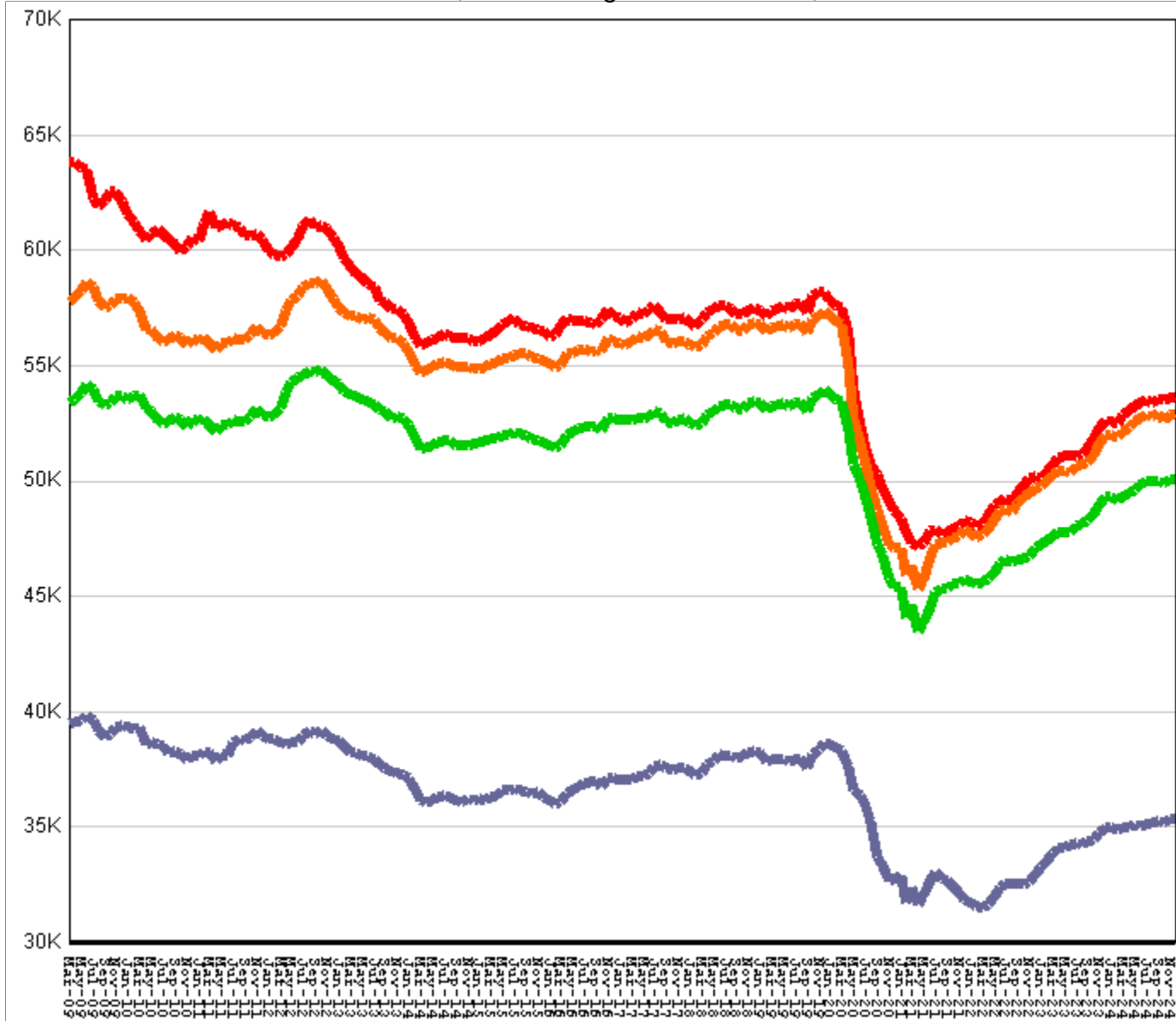


## Inmate counts & percentages by age, for past 48 months

Month	Avg Age	Teens		Twenties		Thirties		Forties		Fifties		Sixty & Up	
		Number	Per-cent	Number	Per-cent	Number	Per-cent	Number	Per-cent	Number	Per-cent	Number	Per-cent
Dec-20	40.4	341	0.72%	11372	24.09%	14446	30.60%	10509	22.26%	6630	14.04%	3928	8.32%
Jan-21	40.52	305	0.66%	10948	23.83%	14058	30.61%	10262	22.34%	6467	14.08%	3907	8.51%
Feb-21	40.56	292	0.64%	10791	23.75%	14070	30.96%	10261	22.58%	6422	14.13%	3892	8.56%
Mar-21	40.59	297	0.65%	10662	23.49%	13999	30.84%	10172	22.41%	6370	14.03%	3906	8.61%
Apr-21	40.72	273	0.62%	10312	23.26%	13640	30.76%	9961	22.47%	6278	14.16%	3889	8.77%
May-21	40.65	290	0.64%	10581	23.43%	14017	31.04%	10173	22.53%	6370	14.11%	3942	8.73%
Jun-21	40.62	307	0.67%	10777	23.47%	14242	31.02%	10280	22.39%	6448	14.04%	3998	8.71%
Jul-21	40.61	316	0.68%	10851	23.34%	14426	31.02%	10384	22.33%	6492	13.96%	4041	8.69%
Aug-21	40.63	317	0.68%	10796	23.14%	14524	31.14%	10472	22.45%	6512	13.96%	4064	8.71%
Sep-21	40.67	317	0.68%	10738	22.96%	14594	31.20%	10495	22.44%	6521	13.94%	4119	8.81%
Oct-21	40.71	299	0.64%	10639	22.73%	14644	31.29%	10574	22.59%	6525	13.94%	4129	8.82%
Nov-21	40.72	299	0.64%	10627	22.65%	14702	31.34%	10651	22.70%	6533	13.93%	4145	8.84%
Dec-21	40.75	302	0.64%	10598	22.53%	14731	31.31%	10688	22.72%	6565	13.95%	4173	8.87%
Jan-22	40.81	293	0.63%	10475	22.44%	14639	31.36%	10641	22.79%	6570	14.07%	4180	8.95%
Feb-22	40.82	298	0.64%	10477	22.42%	14675	31.41%	10666	22.83%	6568	14.06%	4200	8.99%
Mar-22	40.82	295	0.63%	10524	22.34%	14766	31.34%	10729	22.77%	6578	13.96%	4229	8.98%
Apr-22	40.85	285	0.60%	10516	22.29%	14760	31.28%	10785	22.86%	6600	13.99%	4245	9.00%
May-22	40.89	282	0.60%	10500	22.23%	14811	31.35%	10818	22.90%	6601	13.97%	4281	9.06%
Jun-22	40.87	307	0.64%	10586	22.20%	14926	31.31%	10928	22.92%	6632	13.91%	4308	9.04%
Jul-22	40.92	316	0.66%	10541	22.05%	14969	31.32%	10970	22.95%	6674	13.96%	4335	9.07%
Aug-22	40.95	319	0.67%	10509	21.98%	15018	31.41%	11012	23.03%	6711	14.03%	4376	9.15%
Sep-22	40.99	316	0.66%	10427	21.77%	15041	31.40%	10983	22.93%	6739	14.07%	4408	9.20%
Oct-22	41.02	322	0.67%	10369	21.64%	15127	31.57%	11037	23.03%	6754	14.10%	4426	9.24%
Nov-22	41.03	334	0.69%	10392	21.56%	15231	31.60%	11139	23.11%	6801	14.11%	4471	9.28%
Dec-22	41.06	341	0.70%	10353	21.34%	15314	31.56%	11161	23.00%	6853	14.12%	4504	9.28%
Jan-23	41.09	329	0.68%	10330	21.24%	15395	31.65%	11199	23.03%	6873	14.13%	4547	9.35%
Feb-23	41.12	318	0.65%	10332	21.16%	15463	31.67%	11290	23.12%	6877	14.08%	4598	9.42%
Mar-23	41.11	318	0.65%	10385	21.13%	15553	31.64%	11378	23.15%	6926	14.09%	4599	9.36%
Apr-23	41.15	308	0.63%	10377	21.11%	15554	31.64%	11387	23.17%	6929	14.10%	4607	9.37%
May-23	41.17	314	0.64%	10332	21.11%	15557	31.78%	11362	23.21%	6921	14.14%	4622	9.44%
Jun-23	41.2	315	0.64%	10305	20.94%	15622	31.74%	11393	23.15%	6939	14.10%	4645	9.44%
Jul-23	41.23	321	0.65%	10316	20.90%	15694	31.79%	11504	23.30%	6976	14.13%	4681	9.48%
Aug-23	41.29	307	0.62%	10271	20.77%	15634	31.62%	11539	23.34%	6976	14.11%	4727	9.56%
Sep-23	41.31	317	0.64%	10286	20.73%	15652	31.54%	11603	23.38%	7002	14.11%	4763	9.60%
Oct-23	41.33	334	0.67%	10298	20.62%	15763	31.56%	11730	23.48%	7051	14.12%	4811	9.63%
Nov-23	41.34	335	0.66%	10390	20.61%	15863	31.47%	11860	23.53%	7118	14.12%	4847	9.62%
Dec-23	41.38	344	0.68%	10353	20.53%	15841	31.41%	11905	23.60%	7149	14.17%	4850	9.62%
Jan-24	41.4	349	0.69%	10336	20.48%	15918	31.54%	11917	23.61%	7180	14.23%	4871	9.65%
Feb-24	41.44	344	0.68%	10285	20.34%	15890	31.43%	11947	23.63%	7192	14.23%	4897	9.69%
Mar-24	41.46	351	0.69%	10297	20.30%	15911	31.37%	11995	23.65%	7229	14.25%	4935	9.73%
Apr-24	41.49	369	0.72%	10334	20.26%	15970	31.31%	12113	23.75%	7271	14.26%	4981	9.77%
May-24	41.52	381	0.74%	10329	20.18%	16007	31.27%	12136	23.71%	7304	14.27%	5030	9.83%
Jun-24	41.55	394	0.77%	10316	20.13%	16021	31.27%	12143	23.70%	7281	14.21%	5085	9.92%
Jul-24	41.58	392	0.76%	10300	20.09%	16048	31.31%	12223	23.85%	7291	14.22%	5133	10.01%
Aug-24	41.61	378	0.74%	10232	19.96%	16027	31.26%	12226	23.85%	7271	14.18%	5138	10.02%
Sep-24	41.65	377	0.74%	10187	19.89%	15961	31.16%	12249	23.92%	7281	14.22%	5161	10.08%
Oct-24	41.68	375	0.73%	10217	19.88%	16005	31.14%	12254	23.84%	7318	14.24%	5228	10.17%
Nov-24	41.72	370	0.72%	10149	19.76%	15995	31.15%	12287	23.93%	7283	14.18%	5265	10.25%

## All housed offenders under GDC jurisdiction

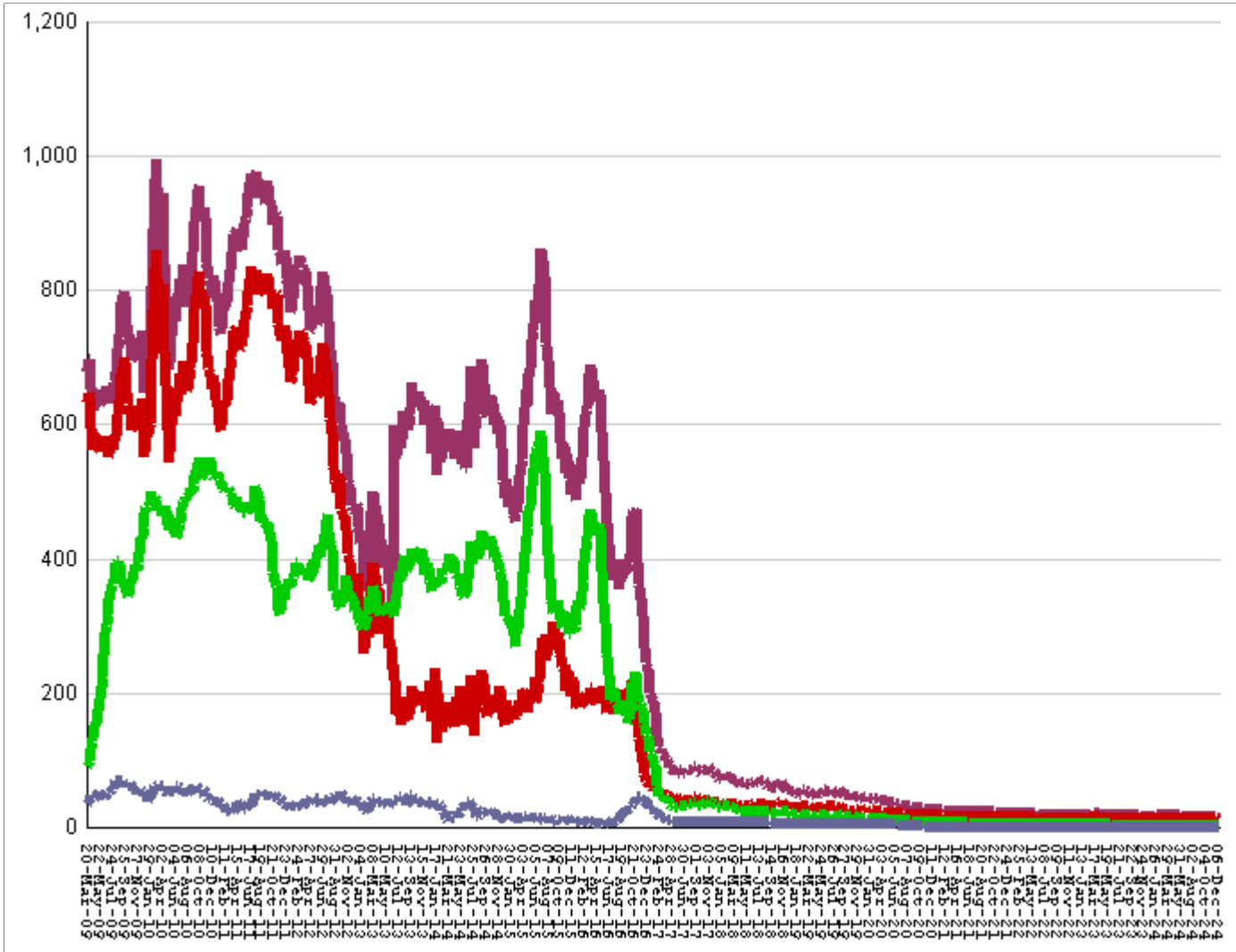
March 20, 2009 through December 13, 2024



<b>All in bed + probs in jail + backlog</b>	<b>RISE BY</b>	<b>26</b>	<b>from</b>	<b>53,617</b>	<b>to</b>	<b>53,643</b>
<b>Probationers in jail</b>	....	....	...	14	at	14
<b>Inmate jail backlog</b>	<b>RISES BY</b>	<b>23</b>	<b>from</b>	<b>688</b>	<b>to</b>	<b>711</b>
<b>All in beds: inmate + Prob + parole</b>	<b>RISE BY</b>	<b>3</b>	<b>from</b>	<b>52,915</b>	<b>to</b>	<b>52,918</b>
<b>Total probationers in beds</b>	<b>fall by</b>	<b>32</b>	<b>from</b>	<b>2,885</b>	<b>to</b>	<b>2,853</b>
<b>Probation detention centers</b>	<b>fall by</b>	<b>5</b>	<b>from</b>	<b>1,392</b>	<b>to</b>	<b>1,387</b>
<b>Probation boot camps</b>	<b>fall by</b>		<b>from</b>		<b>to</b>	
<b>Probation RSAT</b>	<b>fall by</b>	<b>27</b>	<b>from</b>	<b>1493</b>	<b>to</b>	<b>1,466</b>
<b>Parole revocation centers</b>	<b>fall by</b>		<b>from</b>		<b>to</b>	
<b>All in inmate beds: state + other</b>	<b>RISE BY</b>	<b>35</b>	<b>from</b>	<b>50,030</b>	<b>to</b>	<b>50,065</b>
<b>Other inmate facilities :</b>	<b>fall by</b>	<b>19</b>	<b>from</b>	<b>14,745</b>	<b>to</b>	<b>14,726</b>
<b>Inmate boot camps</b>	...	...	...	1	at	1
<b>Private prisons</b>	<b>fall by</b>	<b>4</b>	<b>from</b>	<b>7537</b>	<b>to</b>	<b>7,533</b>
<b>County prisons</b>	<b>fall by</b>	<b>22</b>	<b>from</b>	<b>4451</b>	<b>to</b>	<b>4,429</b>
<b>Transitional centers</b>	<b>RISE BY</b>	<b>7</b>	<b>from</b>	<b>2756</b>	<b>to</b>	<b>2,763</b>
<b>In state prisons only</b>	<b>RISE BY</b>	<b>54</b>	<b>from</b>	<b>35,285</b>	<b>to</b>	<b>35,339</b>

# Probationers in jail awaiting placement in facilities

March 20, 2009 through December 13, 2024



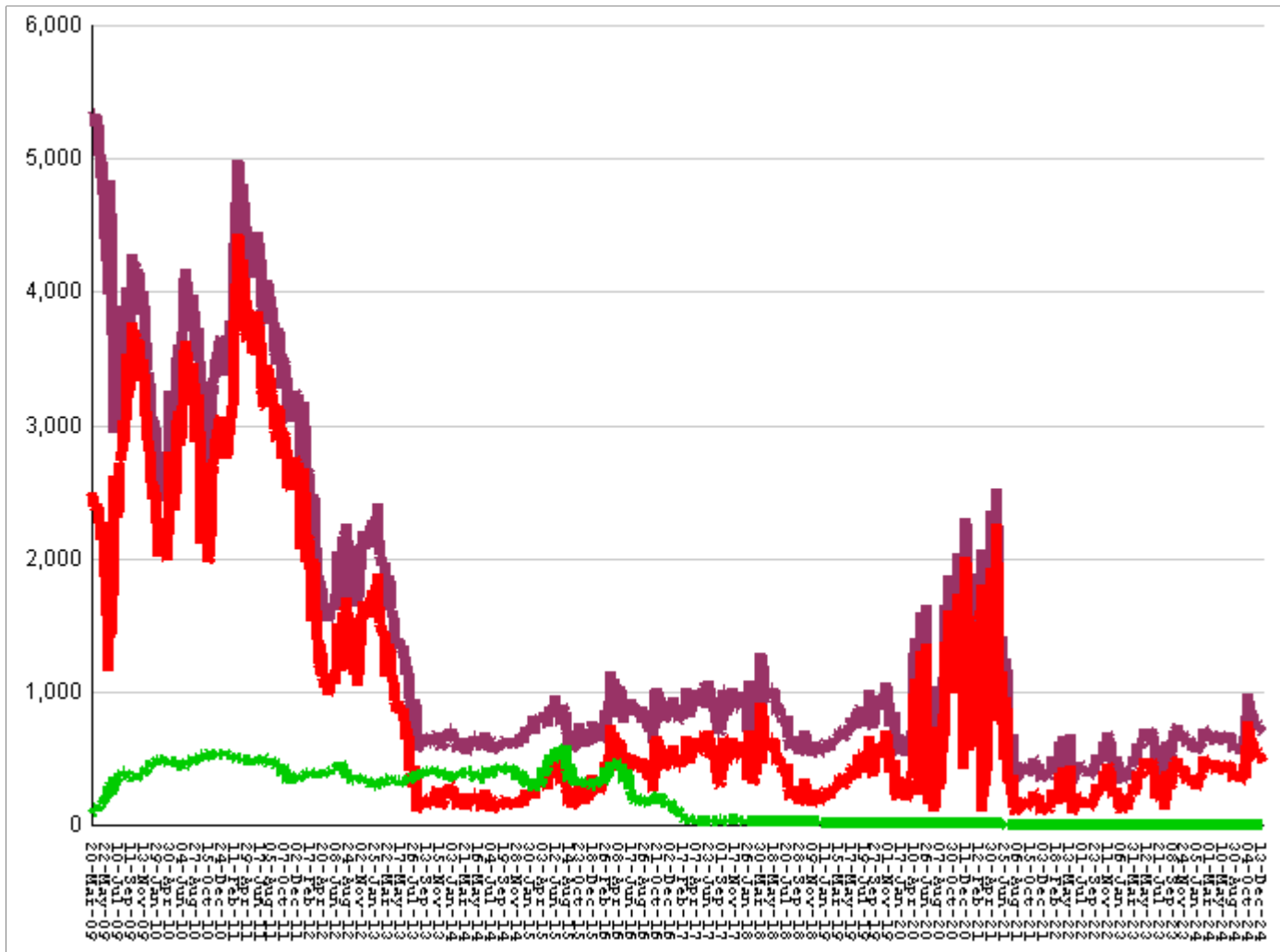
This graph shows, for each Friday since March 20 2009, the number of sentenced felony probationers who were waiting in jail for placement in facilities that GDC operates for housing probationers -- detention centers, probation residential substance abuse treatment (RSAT) centers, and probation boot camps. Counts include both those offenders sentenced directly from court, and those whose street probation was revoked.

<b>Total probationers waiting in jail</b>	...	...	...	<b>level</b>	<b>at</b>	<b>14</b>
<b>... waiting for detention centers</b>	...	...	...	<b>level</b>	<b>at</b>	<b>11</b>
<b>... waiting for probation RSAT</b>	...	...	...	<b>level</b>	<b>at</b>	<b>2</b>
<b>... waiting for probation boot camps</b>	...	...	...	<b>level</b>	<b>at</b>	<b>1</b>

<b>The highest number of probationers waiting in jail was</b>	<b>994</b>	<b>on</b>	<b>05-MAR-10</b>
<b>... highest number waiting for detention centers was</b>	<b>859</b>	<b>on</b>	<b>05-MAR-10</b>
<b>... highest number waiting for probation RSAT was</b>	<b>592</b>	<b>on</b>	<b>10-JUL-15</b>
<b>... highest number waiting for probation boot camps was</b>	<b>70</b>	<b>on</b>	<b>18-SEP-09</b>

# State inmates in jail awaiting placement in facilities

March 20, 2009 through December 13, 2024



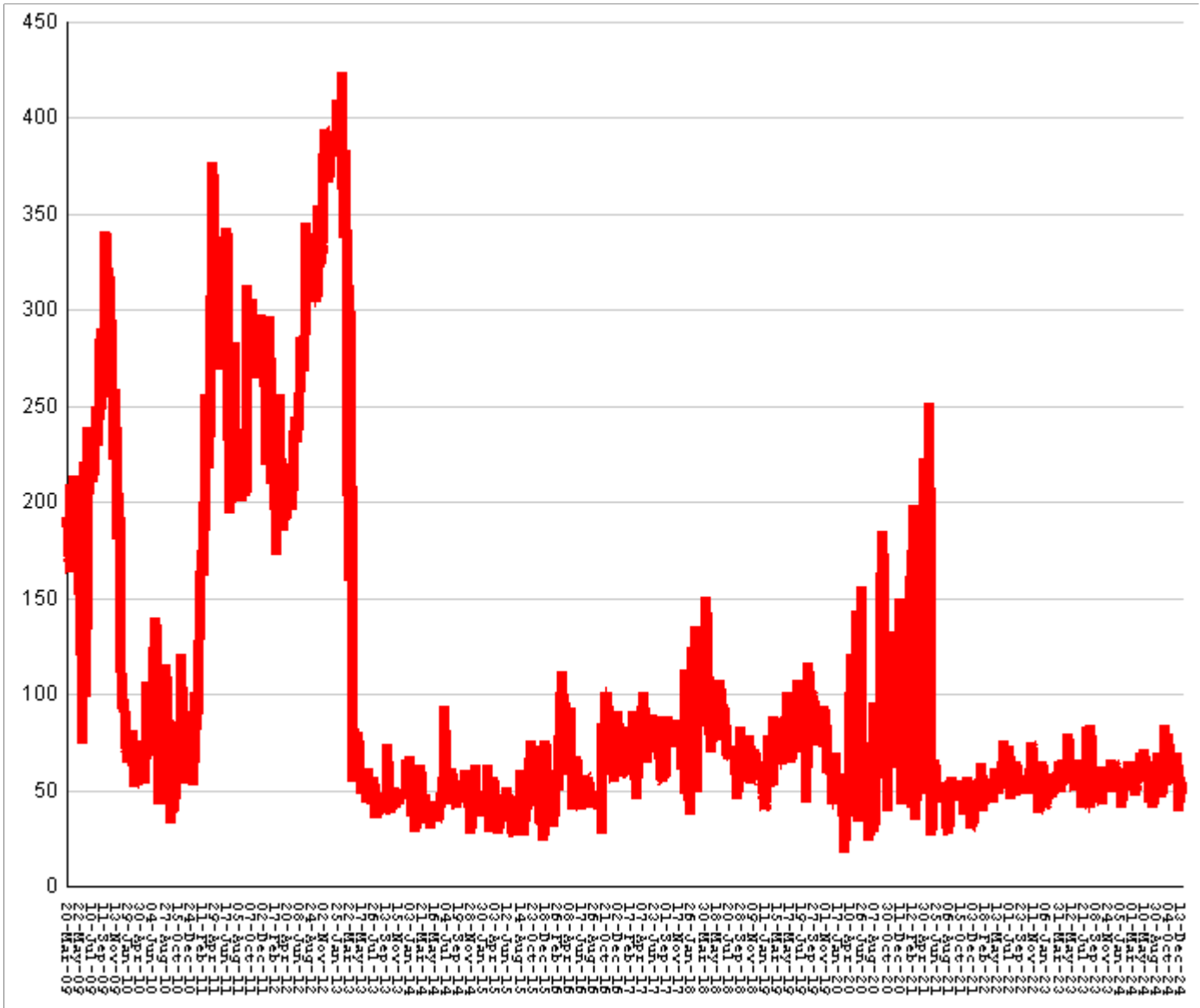
This graph shows, for each Friday since March 2009, the number of prisoners, probationers, and parolees in local jails who have been sentenced or revoked to state prison and whose documents have been received and verified by GDC. Most are almost immediately assigned to a diagnostic center, and are designated as in "admission processing". Of those a few hundred may be in the "transportation delayed" category because there is no room in the assigned diagnostic center, or because the inmate is being held for medical reasons, or for other court proceedings, or other reasons. Those remaining are "ready to be picked up".

<b>Total state inmates waiting in jail</b>	<b>RISE BY</b>	<b>23</b>	<b>from</b>	<b>688</b>	<b>to</b>	<b>711</b>
... not yet assigned to a diagnostic center	fall by	3	from	24	to	21
... total "in admission processing"	RISE BY	26	from	664	to	690
... with "transportation delayed"	fall by	4	from	188	to	184
... ready to be picked up	RISE BY	30	from	476	to	506

<b>The highest number of state inmates waiting in jail was</b>	<b>5338</b>	<b>on</b>	<b>27-MAR-09</b>
... highest number not asg to a diagnostic center was	2881	on	12-JUN-09
... highest number in admission processing was	4916	on	25-MAR-11
... highest number with transportation delayed was	645	on	14-JAN-11
... highest number ready to be pickup was	4435	on	25-MAR-11

## Female state inmates in jail awaiting pickup

March 20, 2009 through December 13, 2024



This graph shows, for each Friday since March 2009, the number of female state prisoners in local jails who were assigned to diagnostic centers but had not yet been picked up.

**Female state inmates in jails waiting picked up**    **RISE BY**    **9**    **from**    **48**    **to**    **57**

**The highest number of female inmates waiting in jail was**    **424**    **on**    **01-FEB-13**

**The lowest number of female inmates waiting in jail was**    **17**    **on**    **20-MAR-20**



## Summary of housed prisoners, parolees, and probationers

Week ending	Prison	Parole	Probation			Prison+parole+probation	Jail		Total
	Total inmates	Revocation centers	Prob RSAT	Boot camp	Detention		Inmate backlog	Probationers	Prison+parole+probation+jail
22-Dec-2023	49353		1411		1276	52040	634	17	52691
29-Dec-2023	49410		1374		1227	52011	652	17	52680
05-Jan-2024	49392		1405		1237	52034	534	17	52585
12-Jan-2024	49307		1402		1219	51928	567	17	52512
19-Jan-2024	49259		1398		1255	51912	604	17	52533
26-Jan-2024	49243		1425		1273	51941	603	17	52561
02-Feb-2024	49176		1411		1327	51914	614	18	52546
09-Feb-2024	49108		1408		1335	51851	577	18	52446
16-Feb-2024	49160		1406		1343	51909	598	18	52525
23-Feb-2024	49131		1423		1346	51900	620	18	52538
01-Mar-2024	49200		1449		1358	52007	643	18	52668
08-Mar-2024	49218		1430		1400	52048	673	18	52739
15-Mar-2024	49255		1435		1412	52102	702	18	52822
22-Mar-2024	49304		1417		1404	52125	675	18	52818
29-Mar-2024	49434		1459		1392	52285	722	18	53025
05-Apr-2024	49389		1507		1409	52305	680	18	53003
12-Apr-2024	49458		1454		1406	52318	666	18	53002
19-Apr-2024	49474		1455		1417	52346	692	18	53056
26-Apr-2024	49533		1477		1436	52446	639	18	53103
03-May-2024	49550		1512		1421	52483	660	18	53161
10-May-2024	49492		1504		1422	52418	643	18	53079
17-May-2024	49615		1451		1410	52476	645	18	53139
24-May-2024	49652		1443		1453	52548	688	18	53254
31-May-2024	49785		1467		1444	52696	612	18	53326
07-Jun-2024	49769		1491		1410	52670	608	17	53295
14-Jun-2024	49784		1492		1419	52695	631	17	53343
21-Jun-2024	49907		1472		1410	52789	643	17	53449
28-Jun-2024	49944		1476		1369	52789	687	17	53493
05-Jul-2024	49897		1493		1369	52759	690	16	53465
12-Jul-2024	50027		1472		1392	52891	549	17	53457
19-Jul-2024	50007		1496		1418	52921	588	17	53526
26-Jul-2024	49939		1433		1447	52819	631	17	53467
02-Aug-2024	49931		1424		1438	52793	598	17	53408
09-Aug-2024	49870		1418		1417	52705	526	17	53248
16-Aug-2024	49881		1429		1400	52710	609	17	53336
23-Aug-2024	49950		1453		1388	52791	598	17	53406
30-Aug-2024	50050		1466		1417	52933	598	17	53548
06-Sep-2024	49948		1452		1456	52856	549	17	53422
13-Sep-2024	49996		1457		1449	52902	535	17	53454
20-Sep-2024	50025		1467		1428	52920	660	17	53597
27-Sep-2024	49948		1515		1424	52887	755	17	53659
04-Oct-2024	49700		1465		1324	52489	989	17	53495
11-Oct-2024	49904		1490		1297	52691	857	16	53564
18-Oct-2024	49937		1494		1257	52688	769	16	53473
25-Oct-2024	49914		1461		1245	52620	766	16	53402
01-Nov-2024	49982		1487		1290	52759	760	16	53535
08-Nov-2024	49986		1504		1307	52797	724	15	53536
15-Nov-2024	50025		1480		1374	52879	710	15	53604
22-Nov-2024	50076		1484		1384	52944	710	15	53669
29-Nov-2024	50000		1511		1405	52916	751	15	53682
06-Dec-2024	50030		1493		1392	52915	688	14	53617
13-Dec-2024	50065		1466		1387	52918	711	14	53643

## Offenders housed in facilities for state prisoners

Week ending	In state prisons	In facilities other than state prisons						Total Inmates
		Transition centers	County prisons	Pre-rel centers	Private prisons	Inmate boot camps	Total others	
22-Dec-2023	34948	2235	4522		7647	1	14405	49353
29-Dec-2023	34970	2234	4530		7676	0	14440	49410
05-Jan-2024	34991	2232	4509		7660	0	14401	49392
12-Jan-2024	34944	2226	4532		7605	0	14363	49307
19-Jan-2024	34914	2219	4528		7598	0	14345	49259
26-Jan-2024	34920	2233	4519		7571	0	14323	49243
02-Feb-2024	34889	2224	4509		7554	0	14287	49176
09-Feb-2024	34842	2208	4485		7573	0	14266	49108
16-Feb-2024	34875	2205	4508		7572	0	14285	49160
23-Feb-2024	34855	2215	4481		7580	0	14276	49131
01-Mar-2024	34885	2227	4497		7591	0	14315	49200
08-Mar-2024	34943	2226	4457		7592	0	14275	49218
15-Mar-2024	34936	2264	4446		7609	0	14319	49255
22-Mar-2024	34924	2323	4463		7594	0	14380	49304
29-Mar-2024	34993	2389	4450		7602	0	14441	49434
05-Apr-2024	34968	2415	4435		7571	0	14421	49389
12-Apr-2024	34979	2429	4473		7577	0	14479	49458
19-Apr-2024	34957	2461	4467		7589	0	14517	49474
26-Apr-2024	35020	2512	4410		7591	0	14513	49533
03-May-2024	35061	2528	4395		7566	0	14489	49550
10-May-2024	35022	2558	4364		7548	0	14470	49492
17-May-2024	35118	2584	4358		7555	0	14497	49615
24-May-2024	35109	2638	4355		7550	0	14543	49652
31-May-2024	35123	2674	4440		7548	0	14662	49785
07-Jun-2024	35023	2682	4494		7570	0	14746	49769
14-Jun-2024	34995	2718	4500		7571	0	14789	49784
21-Jun-2024	35048	2737	4524		7598	0	14859	49907
28-Jun-2024	35076	2740	4540		7588	0	14868	49944
05-Jul-2024	35064	2729	4531		7573	0	14833	49897
12-Jul-2024	35172	2754	4521		7580	0	14855	50027
19-Jul-2024	35164	2754	4505		7584	0	14843	50007
26-Jul-2024	35139	2751	4478		7571	0	14800	49939
02-Aug-2024	35134	2752	4502		7543	0	14797	49931
09-Aug-2024	35109	2749	4482		7529	1	14761	49870
16-Aug-2024	35109	2747	4489		7535	1	14772	49881
23-Aug-2024	35149	2756	4507		7537	1	14801	49950
30-Aug-2024	35243	2761	4517		7528	1	14807	50050
06-Sep-2024	35195	2716	4508		7528	1	14753	49948
13-Sep-2024	35217	2752	4493		7533	1	14779	49996
20-Sep-2024	35238	2746	4506		7534	1	14787	50025
27-Sep-2024	35230	2724	4475		7518	1	14718	49948
04-Oct-2024	35111	2663	4437		7488	1	14589	49700
11-Oct-2024	35197	2679	4493		7534	1	14707	49904
18-Oct-2024	35211	2739	4469		7517	1	14726	49937
25-Oct-2024	35182	2745	4466		7520	1	14732	49914
01-Nov-2024	35239	2765	4442		7535	1	14743	49982
08-Nov-2024	35246	2756	4434		7549	1	14740	49986
15-Nov-2024	35323	2747	4403		7551	1	14702	50025
22-Nov-2024	35354	2755	4428		7538	1	14722	50076
29-Nov-2024	35292	2750	4431		7526	1	14708	50000
06-Dec-2024	35285	2756	4451		7537	1	14745	50030
13-Dec-2024	35339	2763	4429		7533	1	14726	50065

## Offenders waiting in local jails for state facilities

Week ending	Probationers waiting in jail				State prisoners waiting in jail					Assigned females
	.. for PDCs	.. for RSAT	.. for boot camps	Total	Total backlog	Not yet assigned	In adm process	Delayed transport	Ready for pickup	
22-Dec-2023	13	3	1	17	634	40	594	241	353	66
29-Dec-2023	13	3	1	17	652	40	612	243	369	60
05-Jan-2024	13	3	1	17	534	40	494	236	258	53
12-Jan-2024	13	3	1	17	567	39	528	225	303	62
19-Jan-2024	13	3	1	17	604	36	568	215	353	59
26-Jan-2024	13	3	1	17	603	37	566	205	361	52
02-Feb-2024	14	3	1	18	614	37	577	208	369	50
09-Feb-2024	14	3	1	18	577	37	540	197	343	41
16-Feb-2024	14	3	1	18	598	36	562	199	363	43
23-Feb-2024	14	3	1	18	620	35	585	196	389	53
01-Mar-2024	14	3	1	18	643	40	603	188	415	54
08-Mar-2024	14	3	1	18	673	37	636	185	451	57
15-Mar-2024	14	3	1	18	702	37	665	188	477	52
22-Mar-2024	14	3	1	18	675	37	638	195	443	65
29-Mar-2024	14	3	1	18	722	23	699	192	507	61
05-Apr-2024	14	3	1	18	680	23	657	190	467	49
12-Apr-2024	14	3	1	18	666	22	644	187	457	47
19-Apr-2024	14	3	1	18	692	25	667	185	482	53
26-Apr-2024	14	3	1	18	639	26	613	189	424	58
03-May-2024	14	3	1	18	660	24	636	193	443	69
10-May-2024	14	3	1	18	643	23	620	193	427	71
17-May-2024	14	3	1	18	645	23	622	196	426	57
24-May-2024	14	3	1	18	688	24	664	191	473	67
31-May-2024	14	3	1	18	612	25	587	195	392	63
07-Jun-2024	13	3	1	17	608	25	583	193	390	57
14-Jun-2024	13	3	1	17	631	24	607	188	419	43
21-Jun-2024	13	3	1	17	643	24	619	187	432	58
28-Jun-2024	13	3	1	17	687	26	661	189	472	64
05-Jul-2024	12	3	1	16	690	27	663	193	470	50
12-Jul-2024	13	3	1	17	549	28	521	188	333	41
19-Jul-2024	13	3	1	17	588	28	560	180	380	50
26-Jul-2024	13	3	1	17	631	29	602	183	419	54
02-Aug-2024	13	3	1	17	598	27	571	181	390	59
09-Aug-2024	13	3	1	17	526	28	498	179	319	46
16-Aug-2024	13	3	1	17	609	24	585	184	401	69
23-Aug-2024	13	3	1	17	598	24	574	185	389	61
30-Aug-2024	13	3	1	17	598	25	573	186	387	63
06-Sep-2024	13	3	1	17	549	25	524	182	342	59
13-Sep-2024	13	3	1	17	535	25	510	183	327	56
20-Sep-2024	13	3	1	17	660	26	634	182	452	84
27-Sep-2024	13	3	1	17	755	27	728	184	544	52
04-Oct-2024	13	3	1	17	989	25	964	183	781	79
11-Oct-2024	12	3	1	16	857	26	831	185	646	69
18-Oct-2024	12	3	1	16	769	25	744	188	556	57
25-Oct-2024	12	3	1	16	766	26	740	192	548	57
01-Nov-2024	12	3	1	16	760	25	735	186	549	69
08-Nov-2024	12	2	1	15	724	25	699	189	510	53
15-Nov-2024	12	2	1	15	710	25	685	187	498	53
22-Nov-2024	12	2	1	15	710	24	686	190	496	39
29-Nov-2024	12	2	1	15	751	24	727	187	540	43
06-Dec-2024	11	2	1	14	688	24	664	188	476	48
13-Dec-2024	11	2	1	14	711	21	690	184	506	57