

# Friday Report – overview and contents

The pages in The Friday Report are about adult offenders in Georgia’s prisons and jails. They contain statistical snapshots and trends in the populations and movements of offenders in the state prison system, on probation, on parole, and in local jails. Information comes from databases of the Georgia Department of Corrections (GDC) and the Board of Pardons and Paroles, and from data provided by local jailers. Information is summarized into tables in the GDC/Parole Data Warehouse, and is extracted into these pages each Friday. Pages are organized according to the table that supplied the data.

The Monthly Research Table, named “MO_RESRCH” or simply “MO”, contains data about state prisoners, grouped into statistically interesting categories. The table contains one record per month, from January 2000 to the present. Despite its being “monthly”, it is updated weekly, because some data trickles in for several weeks before it becomes stable history.	
Page	Contents
MO-01	Clemencies and maxouts. Monthly graph from 2000 to present shows the monthly departures from prison via actions by the Georgia Parole Board (clemencies), and via service of 100% of the court ordered sentence (maxouts)
MO-02	48 months of releases. Table shows counts and percentages of releases via clemencies and maxouts, with and without probation to follow, for each of the past 48 months.
MO-03	Methamphetamine. Monthly graph from 2000 to present shows admissions, departures, population, and percent of population of inmates with a current offense of methamphetamine possession, sale, manufacturing, or trafficking, and the changing racial composition of the methamphetamine population.
MO-04	Non-violent first incarcerants. Monthly graph from 2000 to present shows admissions, departures, population, and percent of population of inmates without violent or sex crimes, who are serving their first Georgia felony incarceration.
MO-05	Seven Deadly Sins. Monthly graph from 2000 to present shows admissions, departures, population, and percent of population of inmates convicted of kidnapping, armed robbery, rape, aggravated sodomy, aggravated sexual battery, and aggravated child molestation, for whom especially severe penalties are prescribed.
MO-06	48 months of inmate subpopulations. Table shows number and percentage of white and non-white inmates with methamphetamine offenses, and non-violent first incarcerants, and inmates convicted of the Seven Deadly Sins.
MO-07	Inmate age overview. Line graph shows the average age of the inmate population, by month from 2000 to the present. Pie chart shows the number of currently active inmates in their teens, twenties, thirties, forties, fifties, and age sixty+.
MO-08	Counts by age group. Graphs show the count, by month from 2000 to the present, of inmates in their teens, twenties, thirties, forties, fifties, and age sixty+.
MO-09	Percentages by age group. Graphs show the <i>percentages</i> , by month from 2000 to the present, of inmates in their teens, twenties, thirties, forties, fifties, and age sixty+.
MO-10	48 months of inmate ages. Table shows average age of the standing population, and counts and percentages of teens, twenties, thirties, forties, fifties, and sixty+, for each of the past 48 months.

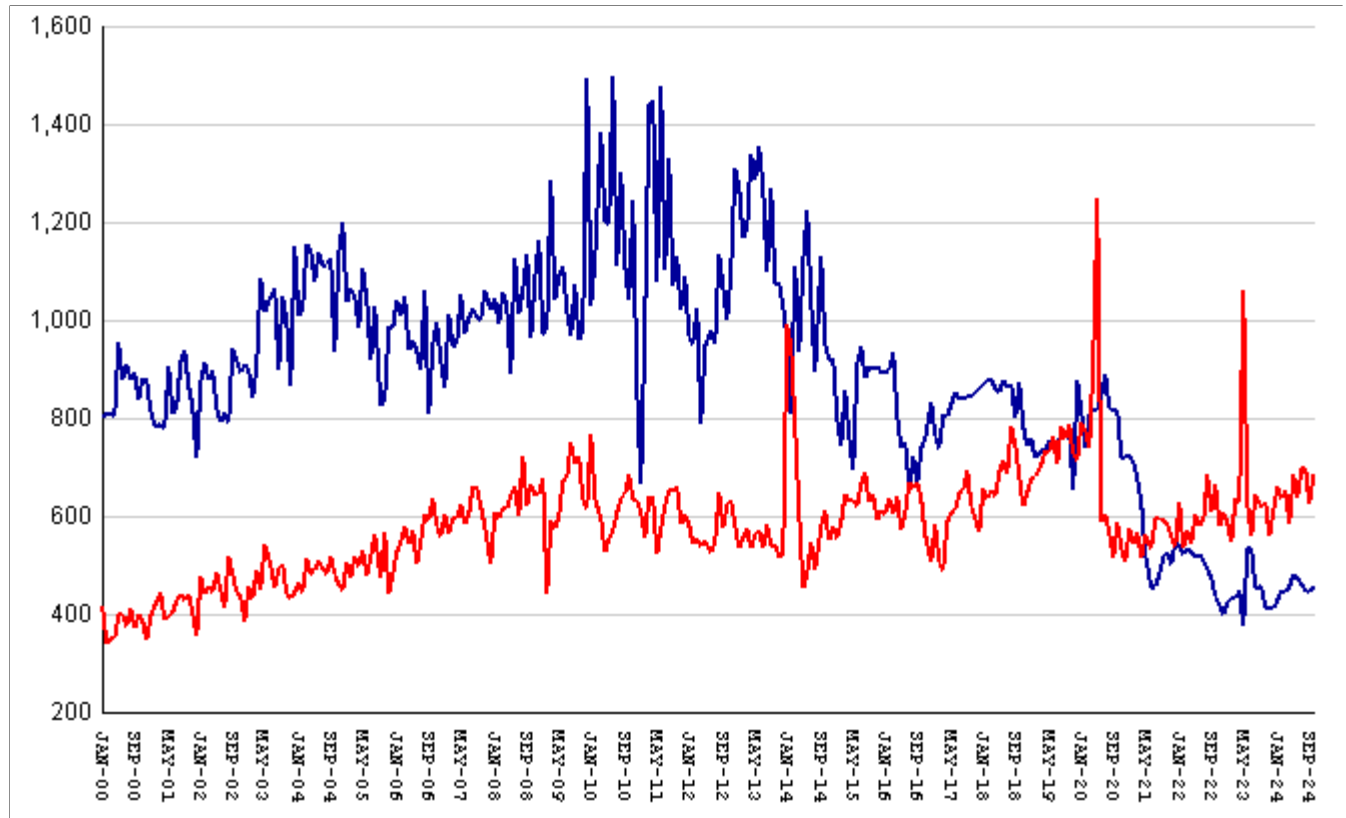
# Friday Report – overview and contents *(continued)*

The MSR Table is based on the Management Summary Report (MSR), a snapshot report posted each week in GDC's Scribe database. MSR_RESRCH gathers that data into weekly trends, with one record for each Friday since March 20th, 2009.	
Page	Contents
MSR-01	All housed offenders. Weekly graph from March 20, 2009 to present, showing counts of inmates in state prisons, transitional centers, county prisons, private prisons, inmate boot camps, parole revocation centers, probation Residential Substance Abuse Treatment (RSAT), probation boot camps, probation detention centers, plus the inmate jail backlog and probationers in jail waiting for state facilities.
MSR-02	Probationers in jail. Weekly graph from March 20, 2009 to present, showing counts of probationers in local jails awaiting placement in probation detention centers, probation RSAT centers, and probation boot camps.
MSR-03	State inmates in jail. Weekly graph from March 20, 2009 to present, showing counts of state inmates in local jails awaiting placement in state prison facilities – including those who have not yet been assigned to a diagnostic center, those whose transportation has been delayed for some reason, and those who are ready to be picked up.
MSR-04	Female state inmates in jail. Weekly graph from March 20, 2009 to present, showing counts of female state inmates awaiting placement in a state prison for females.
MSR-05	52-week table: housed offenders. Data for each of the past 52 weeks, showing total prison inmates, parolees in revocation centers, probationers in RSAT/boot camp/detention centers, inmate jail backlog, probationers in jail waiting for facilities, with subtotals.
MSR-06	52-week table: state prisoners. Data for each of the past 52 weeks, showing inmates in state prisons, transition centers, county prisons, pre-release centers, private prisons, and inmate boot camps, with subtotals.
MSR-07	52-week table: waiting in jail. Data for each of the past 52 weeks, showing probationers waiting for detention centers, RSAT, and boot camp; and state prisoners not yet assigned to diagnostic centers, in admission process, with delayed transport, and ready for pickup, with subtotals.

The DCA table consists mainly of data submitted from each of Georgia's 140+ local jails, via the Georgia Crime Information Center (GCIC) to the Georgia Department of Community Affairs (DCA), which publishes its <u><a href="#">County Jail Inmate Population Report</a></u> on its web site each month. GDC has collected summary statewide data from this report every month since its inception in January, 1993. The table also contains the inmate jail backlog as computed by GDC for the last Friday of each month, for comparison with the jailers' count of state inmates. Although nominally a monthly table, DCA_RESRCH is updated weekly to insure that the DCA data is correctly synchronized with the GDC jail backlog data.	
Page	Contents
DCA-01	Jail composition. Monthly graph from 1993 to the present shows trends in the numbers of unsentenced inmates, state inmates, county inmates, and other inmates.
DCA-02	Two views of jail backlog. Monthly graph from 1993 to present compares jailers' count of "state inmates" with GDC's count of the "inmate jail backlog", and explains that both are valid counts of different phenomena.
DCA-03	48-month table: local jails. Data from Georgia jailers for each of the past 48 months, showing total jail population, capacity, utilization, and number and percent of unsentenced inmates, state inmates, county inmates, and other inmates.

# Releases by clemency and maxout, Jan-2000 to Oct-2024

There are two main ways of being released from a Georgia prison -- by actions of the Board of Pardons and Paroles ("Clemencies") and by service of 100% of the court-ordered sentences ("Maxouts"). "Clemency" includes paroles, reprieves, commutations, and transfer to other confinement prior to expiration of sentence. "Other Releases" includes deaths, and sentences modified or overturned by the courts. Clemencies and maxouts may or may not be followed by periods of probation.



A. Clemency with probation to follow	RISES BY	20	from	381	to	401
B. Clemency only	falls by	5	from	63	to	58
C. Maxout with probation to follow	RISES BY	70	from	561	to	631
D. Maxout only (unsupervised)	falls by	9	from	65	to	56
E. Other releases	falls by	6	from	34	to	28
F. Total releases (A+B+C+D+E)	RISES BY	70	from	1104	to	1174
<b>G. Total clemencies (A+B) (top line)</b>	<b>RISES BY</b>	<b>15</b>	<b>from</b>	<b>444</b>	<b>to</b>	<b>459</b>
<b>H. Total maxouts(C+D) (bottom line)</b>	<b>RISES BY</b>	<b>61</b>	<b>from</b>	<b>626</b>	<b>to</b>	<b>687</b>
I. % of releases by clemency (G/F)	falls by	1.12%	from	40.22%	to	39.1%
J. % of releases by maxout (H/F)	RISES BY	1.82%	from	56.7%	to	58.52%
K. Supervised releases (A+B+C)	RISES BY	85	from	1005	to	1090
L. % unsupervised releases (D/F)	falls by	1.12%	from	5.89%	to	4.77%
M. % supervised releases (K/F)	RISES BY	1.81%	from	91.03%	to	92.84%

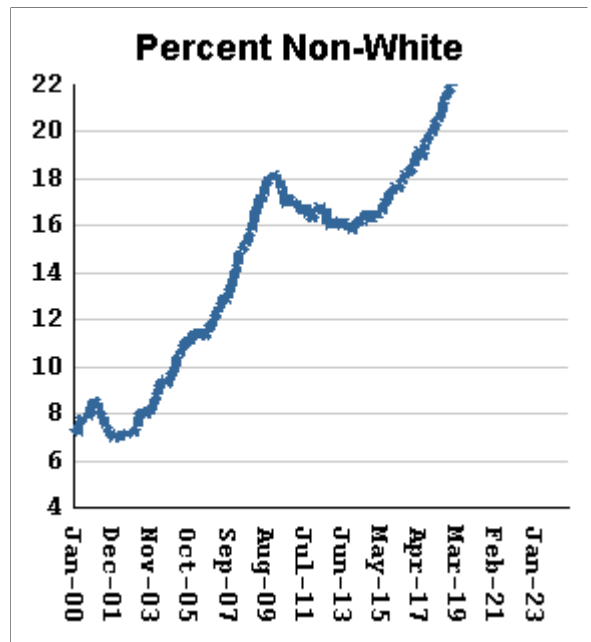
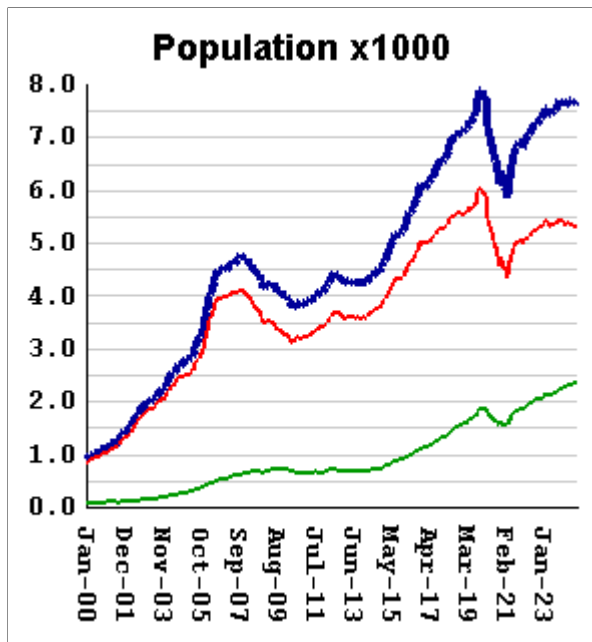
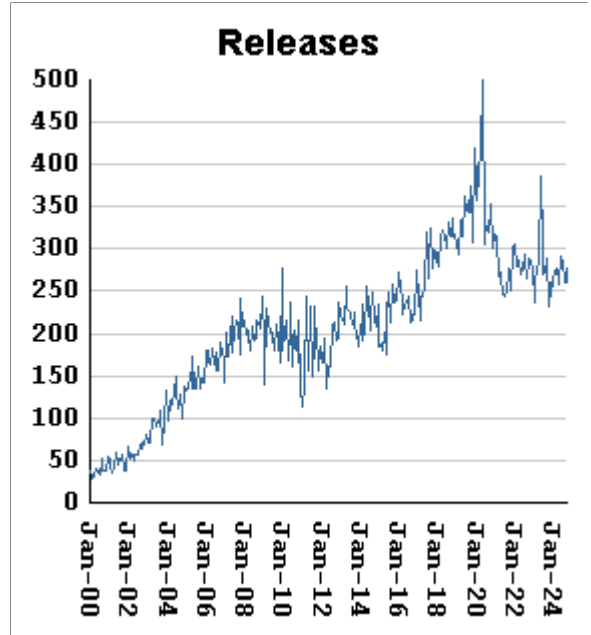
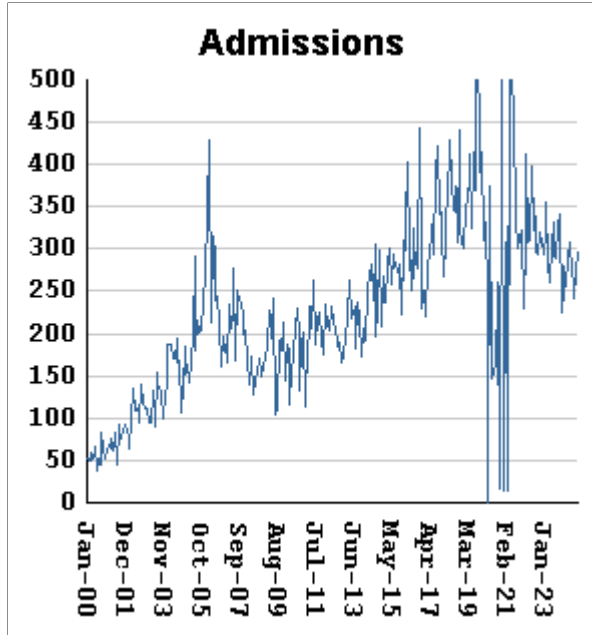
## Monthly releases from prison by type of release, for the past 48 months

Month	A	B	C	D	E	F	G	H	I	J
	Clemency + Prob	Clemency Only	Maxout + Prob	Maxout Only	Other Rels	Total Releases (A+B+C+D+E)	Total Clemency (A+B)	Total Maxout (C+D)	Percent Clemency (G/F)	Percent Maxout (H/F)
Nov-20	598	119	480	53	21	1271	717	533	56.41%	41.94%
Dec-20	622	101	446	60	18	1247	723	506	57.98%	40.58%
Jan-21	634	91	516	58	21	1320	725	574	54.92%	43.48%
Feb-21	615	97	481	62	20	1275	712	543	55.84%	42.59%
Mar-21	569	107	495	71	16	1258	676	566	53.74%	44.99%
Apr-21	531	98	454	61	24	1168	629	515	53.85%	44.09%
May-21	445	78	508	54	21	1106	523	562	47.29%	50.81%
Jun-21	367	85	467	68	21	1008	452	535	44.84%	53.08%
Jul-21	390	67	534	63	19	1073	457	597	42.59%	55.64%
Aug-21	411	70	532	63	28	1104	481	595	43.57%	53.89%
Sep-21	442	77	523	67	32	1141	519	590	45.49%	51.71%
Oct-21	447	78	526	56	21	1128	525	582	46.54%	51.60%
Nov-21	425	79	493	65	18	1080	504	558	46.67%	51.67%
Dec-21	467	84	483	56	18	1108	551	539	49.73%	48.65%
Jan-22	457	82	552	75	26	1192	539	627	45.22%	52.60%
Feb-22	443	81	466	70	24	1084	524	536	48.34%	49.45%
Mar-22	460	73	514	57	16	1120	533	571	47.59%	50.98%
Apr-22	457	71	471	70	16	1085	528	541	48.66%	49.86%
May-22	440	78	541	63	26	1148	518	604	45.12%	52.61%
Jun-22	459	62	527	58	21	1127	521	585	46.23%	51.91%
Jul-22	443	67	529	60	14	1113	510	589	45.82%	52.92%
Aug-22	426	66	617	67	21	1197	492	684	41.10%	57.14%
Sep-22	397	78	551	57	18	1101	475	608	43.14%	55.22%
Oct-22	374	61	606	60	23	1124	435	666	38.70%	59.25%
Nov-22	366	53	523	55	19	1016	419	578	41.24%	56.89%
Dec-22	345	57	551	58	28	1039	402	609	38.69%	58.61%
Jan-23	375	51	527	59	23	1035	426	586	41.16%	56.62%
Feb-23	389	45	495	51	17	997	434	546	43.53%	54.76%
Mar-23	376	56	574	62	24	1092	432	636	39.56%	58.24%
Apr-23	390	57	572	55	26	1100	447	627	40.64%	57.00%
May-23	328	46	933	128	20	1455	374	1061	25.70%	72.92%
Jun-23	462	71	568	58	19	1178	533	626	45.25%	53.14%
Jul-23	461	73	516	43	25	1118	534	559	47.76%	50.00%
Aug-23	403	51	593	51	22	1120	454	644	40.54%	57.50%
Sep-23	407	52	577	43	10	1089	459	620	42.15%	56.93%
Oct-23	364	50	577	52	31	1074	414	629	38.55%	58.57%
Nov-23	355	56	498	62	19	990	411	560	41.52%	56.57%
Dec-23	367	46	553	59	21	1046	413	612	39.48%	58.51%
Jan-24	368	61	601	60	32	1122	429	661	38.24%	58.91%
Feb-24	395	52	578	60	24	1109	447	638	40.31%	57.53%
Mar-24	380	63	591	63	20	1117	443	654	39.66%	58.55%
Apr-24	412	45	528	57	33	1075	457	585	42.51%	54.42%
May-24	425	57	614	70	26	1192	482	684	40.44%	57.38%
Jun-24	409	64	575	61	23	1132	473	636	41.78%	56.18%
Jul-24	400	62	631	67	38	1198	462	698	38.56%	58.26%
Aug-24	382	67	640	59	19	1167	449	699	38.47%	59.90%
Sep-24	381	63	561	65	34	1104	444	626	40.22%	56.70%
Oct-24	401	58	631	56	28	1174	459	687	39.10%	58.52%

# Inmates with meth crimes, by month, Jan-2000 to Oct-2024

Methamphetamine is one of the most addictive drugs ever known. At first it induces intense euphoria, but with continued use causes severe depression and physical deterioration, including the dental catastrophe known as "meth mouth".

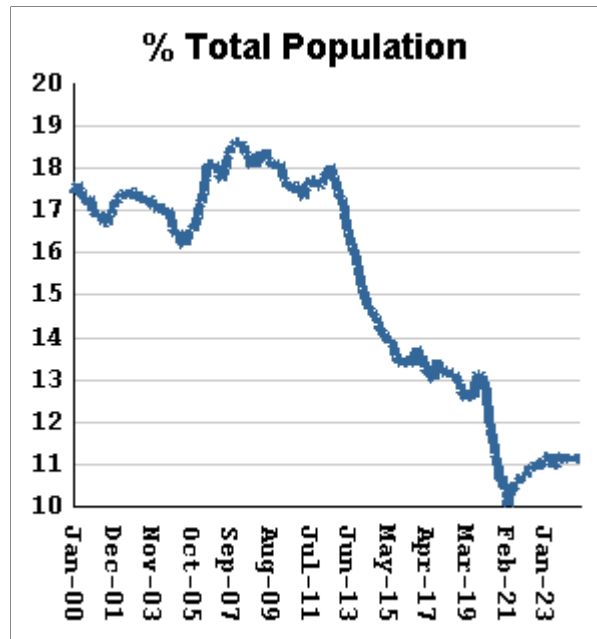
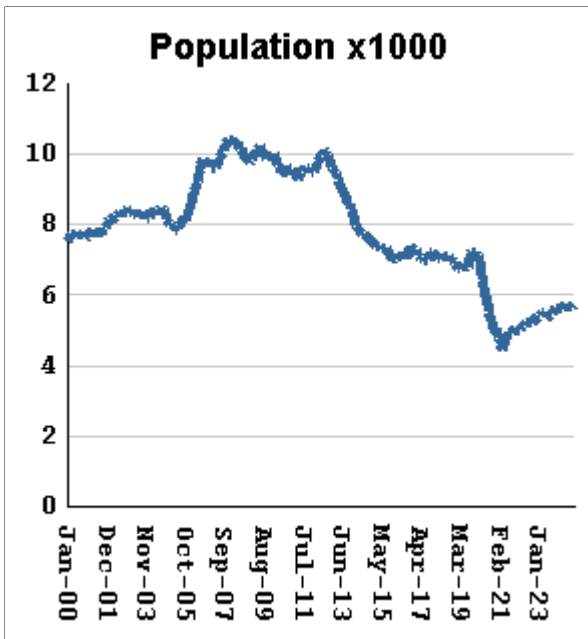
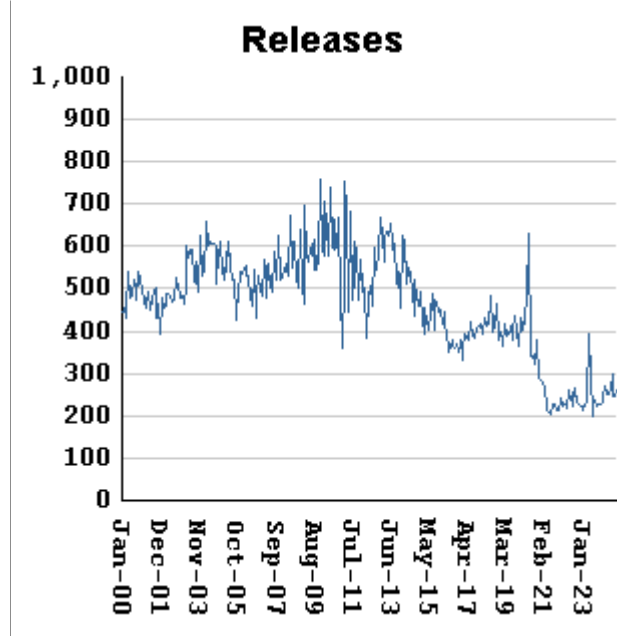
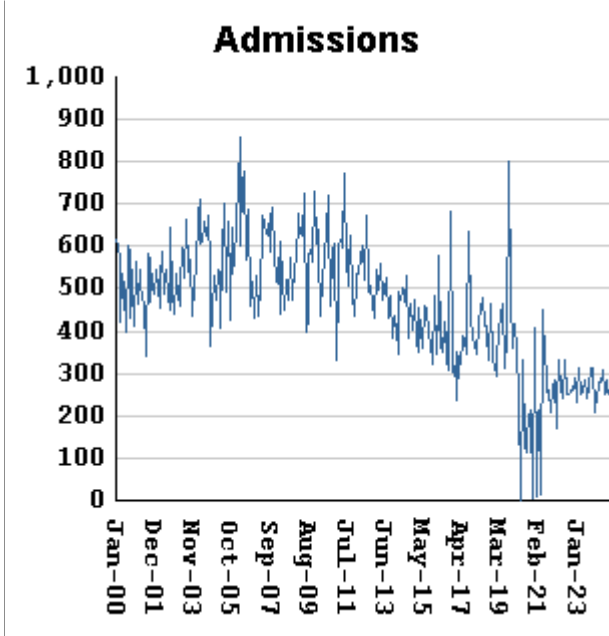
Georgia's meth epidemic peaked in 2007-2008, then declined, but is again growing. It started in the predominantly white northern counties, with blacks accounting for only about 5% of convictions. But black usage has expanded, and now accounts for about 15% of convictions.



Methamphetamine admissions	RISE BY	21	from	276	to	297
Methamphetamine releases	RISE BY	17	from	260	to	277
Methamphetamine population	RISES BY	20	from	7667	to	7687
Meth white population	RISES BY	19	from	5303	to	5322
Meth non-white population	falls by	0	...	2365	at	2365
Percent meth inmates who are non-white	falls by	.08 %	from	30.85%	to	30.77%

# Non-violent first-incarcerants, by month, Jan-2000 to Oct-2024

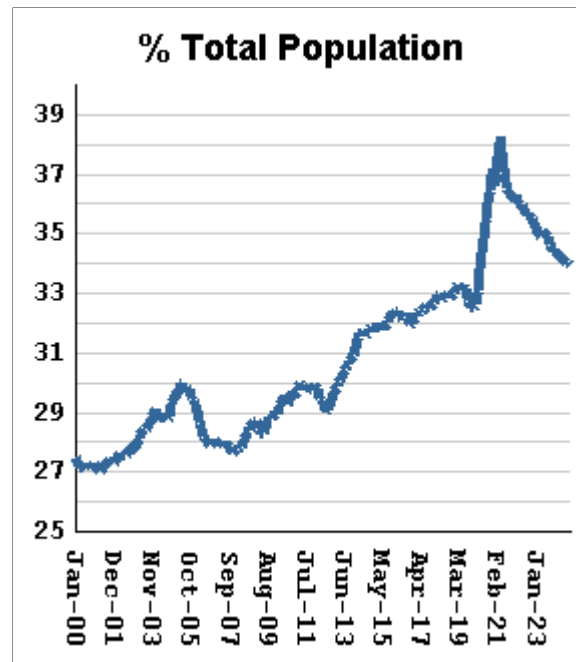
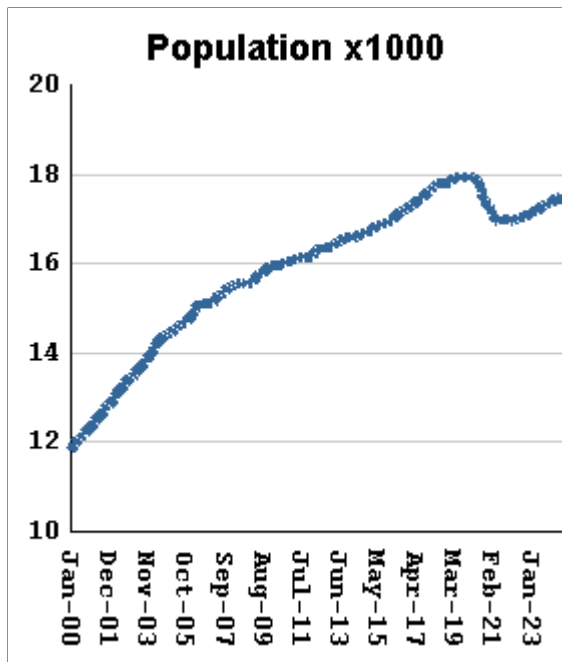
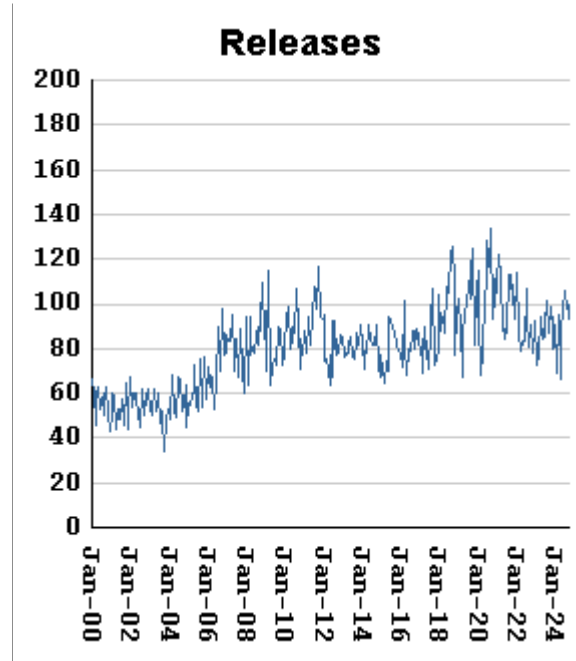
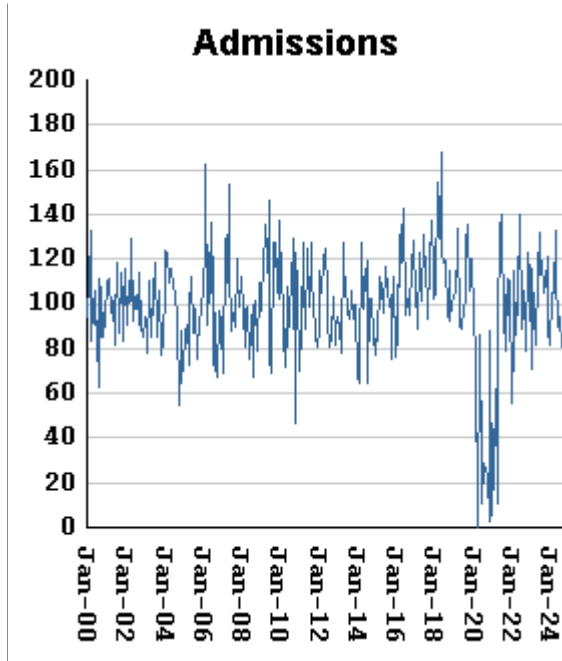
Historically, about one in six Georgia prison inmates has been a first-time incarcerant with a non-violent crime. In 2012 Georgia passed HB1176, which aimed to curb the growth of prison population by steering the least dangerous, least hardened offenders away from prison through pre-trial intervention, diversion, drug courts and treatment programs, and raising the dollar thresholds that define property felonies. The expectation is that over time, these measures will reduce the percentage of first-time non-violent incarcerants in prison.



Non-viol/1st-Incar admissions	RISE BY	28	from	249	to	277
Non-viol/1st-Incar releases	RISE BY	14	from	248	to	262
Non-viol/1st-Incar population	RISES BY	15	from	5705	to	5720
Non-viol/1st-Incar % of total population	falls by	.01 %	from	11.14%	to	11.13%

# "Seven Deadly Sins" by month, Jan-2000 to Oct-2024

Tough legislation in 1995 imposed mandatory ten-year minimum terms for kidnapping, armed robbery, rape, aggravated sodomy, aggravated sexual battery, and aggravated child molestation, and a minimum of 25 years for murder. A second conviction resulted in life without parole. As predicted, longer prison terms caused population to climb steeply for about a decade. It then began to level off, as releases started catching up with admissions. The 2008 dip in percentage of total population (bottom right) was caused by the surge of methamphetamine convictions (Page MO-03). Note: these graphs include inmates convicted before 1995.



"Seven Deadly Sin" admissions	RISE BY	15	from	94	to	109
"Seven Deadly Sin" releases	fall by	7	from	100	to	93
"Seven Deadly Sin" population	RISES BY	16	from	17433	to	17449
"Seven Deadly Sin" % of total population	falls by	.09 %	from	34.04%	to	33.95%

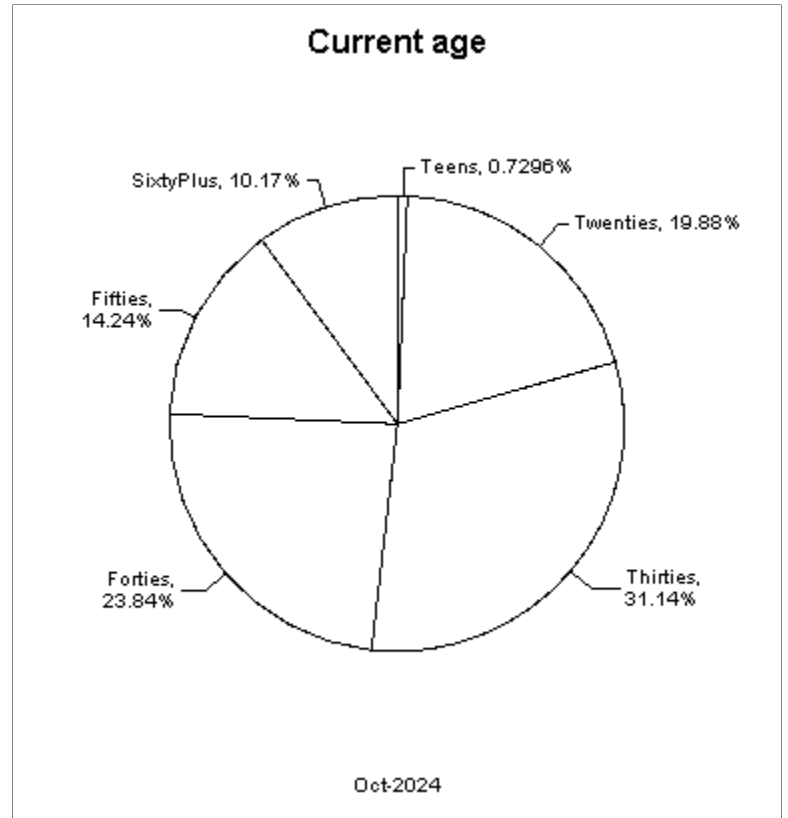
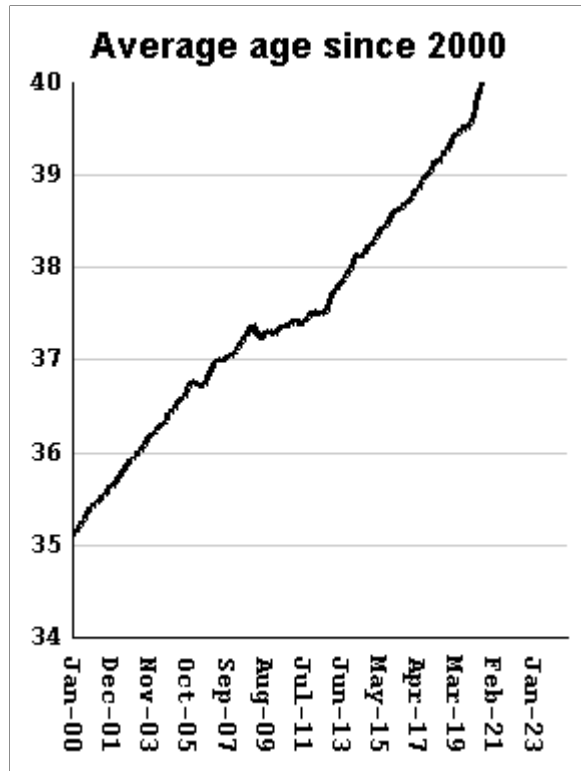
## Inmate subpopulation counts and percentages, for the past 48 months

Month	Methamphetamine						1st Incar Non-Violent		Seven Deadly Sins	
	Total Number	Total Percent	White Number	White Percent	Non White Number	Non White Percent	Number	Percent	Number	Percent
Nov-20	6103	13.13%	4566	74.82%	1544	25.30%	4923	10.59%	17283	37.17%
Dec-20	6360	13.47%	4749	74.67%	1618	25.44%	5045	10.69%	17272	36.58%
Jan-21	6057	13.19%	4523	74.67%	1541	25.44%	4775	10.40%	17167	37.37%
Feb-21	6035	13.28%	4521	74.91%	1571	26.03%	4688	10.32%	17073	37.57%
Mar-21	6094	13.42%	4506	73.94%	1595	26.17%	4634	10.21%	17024	37.50%
Apr-21	5836	13.16%	4307	73.80%	1536	26.32%	4433	10.00%	16947	38.22%
May-21	6177	13.68%	4607	74.58%	1640	26.55%	4675	10.35%	16945	37.52%
Jun-21	6441	14.03%	4754	73.81%	1727	26.81%	4795	10.44%	16995	37.02%
Jul-21	6659	14.32%	4892	73.46%	1774	26.64%	4878	10.49%	17046	36.66%
Aug-21	6735	14.44%	4947	73.45%	1804	26.79%	4915	10.54%	17020	36.49%
Sep-21	6803	14.54%	4987	73.31%	1823	26.80%	4949	10.58%	17017	36.38%
Oct-21	6825	14.58%	5004	73.32%	1828	26.78%	4947	10.57%	16983	36.29%
Nov-21	6890	14.69%	5058	73.41%	1848	26.82%	5002	10.66%	16989	36.21%
Dec-21	6908	14.68%	5065	73.32%	1850	26.78%	5044	10.72%	17006	36.15%
Jan-22	6832	14.63%	5017	73.43%	1850	27.08%	4992	10.69%	16948	36.30%
Feb-22	6861	14.68%	5043	73.50%	1876	27.34%	5008	10.72%	16945	36.26%
Mar-22	6985	14.83%	5079	72.71%	1913	27.39%	5113	10.85%	16973	36.03%
Apr-22	7009	14.85%	5095	72.69%	1921	27.41%	5155	10.93%	16980	35.99%
May-22	7051	14.93%	5121	72.63%	1954	27.71%	5136	10.87%	17001	35.99%
Jun-22	7172	15.04%	5193	72.41%	1988	27.72%	5229	10.97%	17058	35.78%
Jul-22	7200	15.06%	5200	72.22%	2007	27.88%	5222	10.93%	17042	35.65%
Aug-22	7255	15.17%	5254	72.42%	2030	27.98%	5255	10.99%	17037	35.63%
Sep-22	7286	15.21%	5237	71.88%	2055	28.20%	5242	10.94%	17062	35.61%
Oct-22	7293	15.22%	5262	72.15%	2062	28.27%	5269	11.00%	17050	35.58%
Nov-22	7329	15.20%	5312	72.48%	2060	28.11%	5303	11.00%	17095	35.46%
Dec-22	7364	15.18%	5309	72.09%	2061	27.99%	5367	11.06%	17115	35.27%
Jan-23	7421	15.26%	5342	71.98%	2099	28.28%	5386	11.07%	17113	35.19%
Feb-23	7485	15.33%	5375	71.81%	2130	28.46%	5414	11.09%	17156	35.13%
Mar-23	7561	15.38%	5425	71.75%	2142	28.33%	5504	11.20%	17173	34.94%
Apr-23	7557	15.37%	5432	71.88%	2132	28.21%	5510	11.21%	17161	34.91%
May-23	7430	15.18%	5343	71.91%	2117	28.49%	5377	10.98%	17193	35.12%
Jun-23	7430	15.10%	5315	71.53%	2121	28.55%	5368	10.91%	17240	35.03%
Jul-23	7492	15.17%	5375	71.74%	2158	28.80%	5420	10.98%	17261	34.96%
Aug-23	7509	15.18%	5343	71.15%	2171	28.91%	5439	11.00%	17279	34.94%
Sep-23	7509	15.13%	5340	71.11%	2173	28.94%	5475	11.03%	17297	34.86%
Oct-23	7606	15.23%	5407	71.09%	2212	29.08%	5564	11.14%	17308	34.65%
Nov-23	7687	15.25%	5453	70.94%	2238	29.11%	5651	11.21%	17339	34.39%
Dec-23	7667	15.20%	5436	70.90%	2235	29.15%	5630	11.16%	17347	34.39%
Jan-24	7652	15.16%	5421	70.84%	2257	29.50%	5649	11.19%	17338	34.35%
Feb-24	7655	15.14%	5402	70.57%	2256	29.47%	5632	11.14%	17374	34.37%
Mar-24	7633	15.05%	5364	70.27%	2272	29.77%	5641	11.12%	17384	34.28%
Apr-24	7668	15.03%	5372	70.06%	2310	30.13%	5666	11.11%	17451	34.21%
May-24	7713	15.07%	5380	69.75%	2336	30.29%	5724	11.18%	17476	34.14%
Jun-24	7691	15.01%	5364	69.74%	2330	30.30%	5709	11.14%	17468	34.09%
Jul-24	7670	14.96%	5335	69.56%	2358	30.74%	5695	11.11%	17456	34.06%
Aug-24	7651	14.92%	5303	69.31%	2350	30.71%	5704	11.13%	17439	34.01%
Sep-24	7667	14.97%	5303	69.17%	2365	30.85%	5705	11.14%	17433	34.04%
Oct-24	7687	14.96%	5322	69.23%	2365	30.77%	5720	11.13%	17449	33.95%



# Overview of inmate age statistics, Jan-2000 to Oct-2024

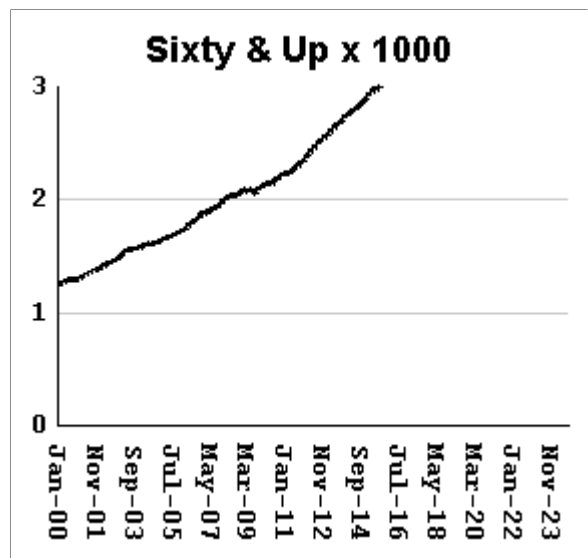
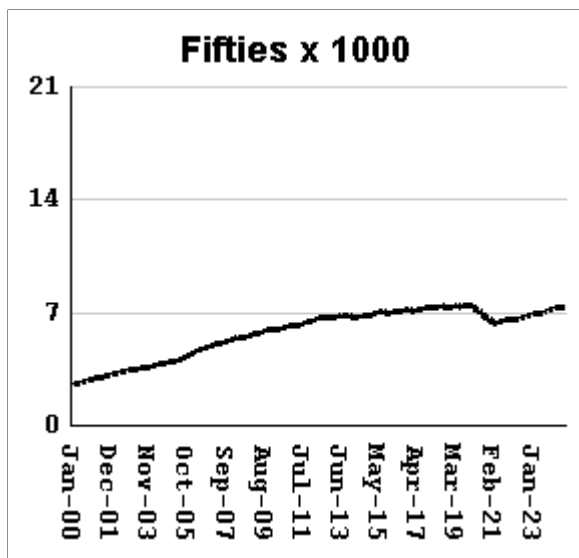
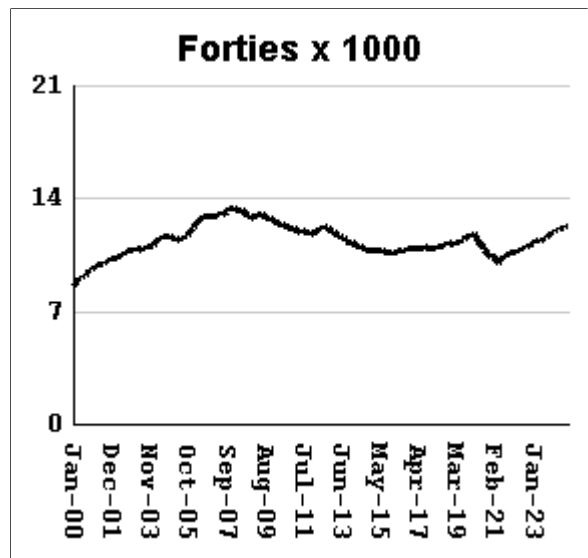
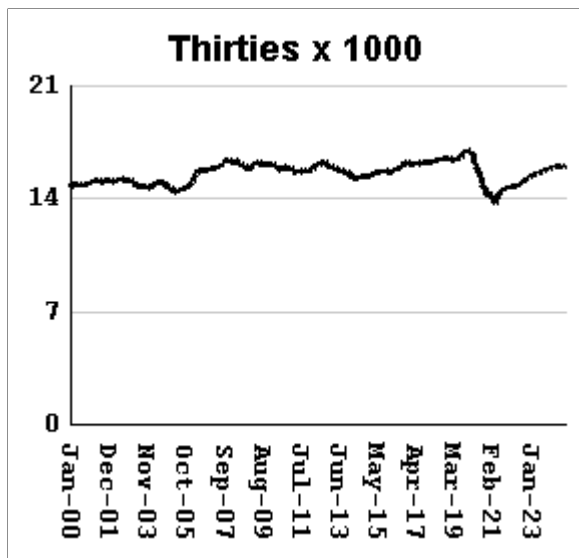
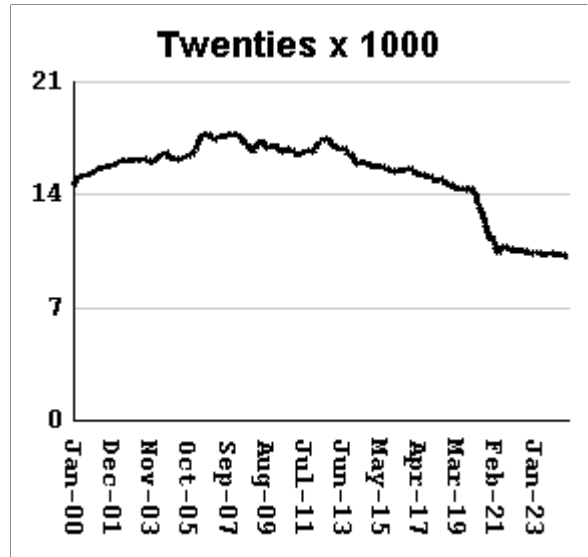
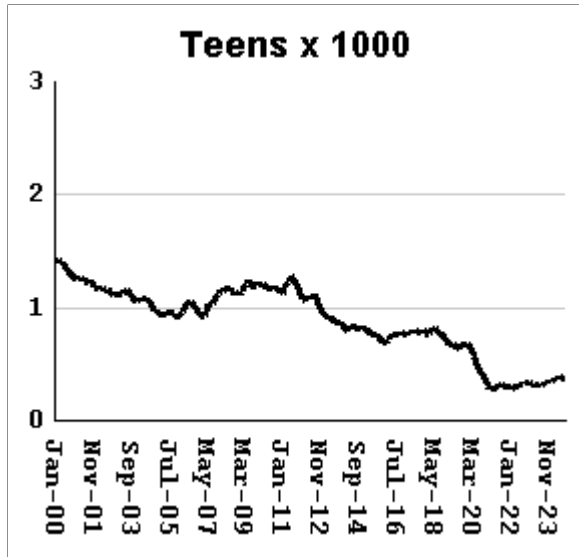
The "aging inmate population" is a concern in correctional systems throughout America, including Georgia. Here, the increase in inmate age is the result of several factors. Teenagers have been steered away from prison by increased usage of probation and other alternatives, at least for their first convictions. And there has been a surge of middle-aged male sex offenders due to the expanding "It's OK to tell" ethos. But most importantly, more severe sentence lengths and release policies have greatly increased the length of time that most offenders -- especially violent ones -- spend in prison, thereby increasing their average age.



Average age of active inmates	RISES BY	.03	from	41.65	to	41.68
Number in their teens	falls by	2	from	377	to	375
Percentage in their teens	falls by	.01%	from	.74%	to	0.73%
Number in their twenties	RISES BY	30	from	10,187	to	10,217
Percentage in their twenties	falls by	0.01%	from	19.89%	to	19.88%
Number in their thirties	RISES BY	44	from	15,963	to	16,007
Percentage in their thirties	falls by	0.03%	from	31.17%	to	31.14%
Number in their forties	RISES BY	5	from	12,249	to	12,254
Percentage in their forties	falls by	0.08%	from	23.92%	to	23.84%
Number in their fifties	RISES BY	37	from	7281	to	7,318
Percentage in their fifties	RISES BY	0.02%	from	14.22%	to	14.24%
Number age sixty and up	RISES BY	67	from	5159	to	5,226
Percentage age sixty and up	RISES BY	.1%	from	10.07%	to	10.17%

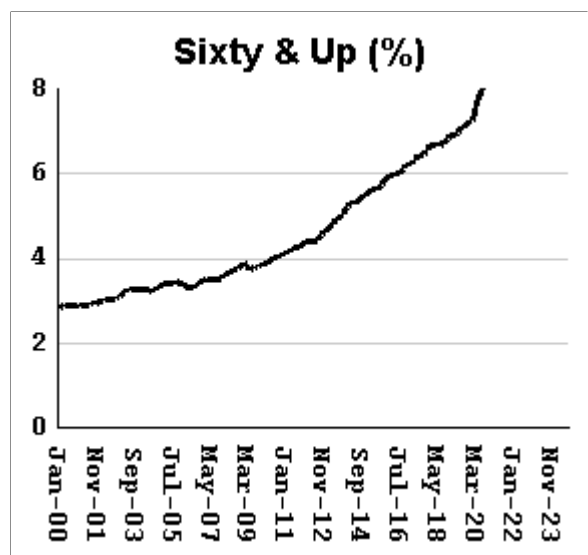
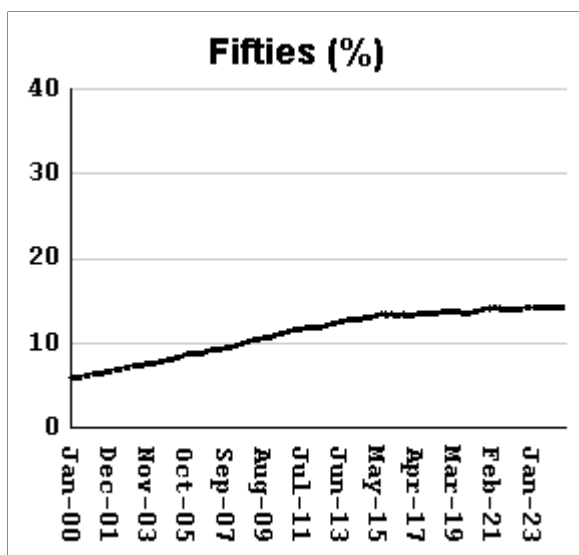
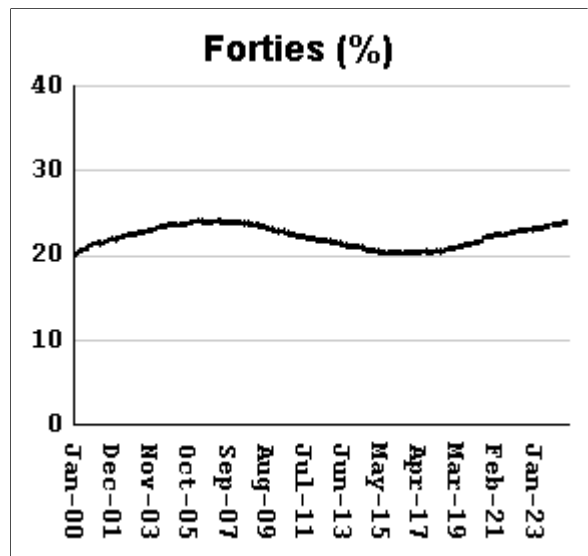
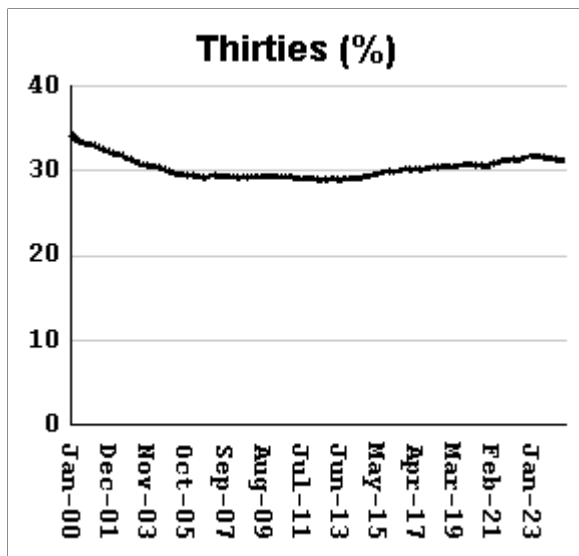
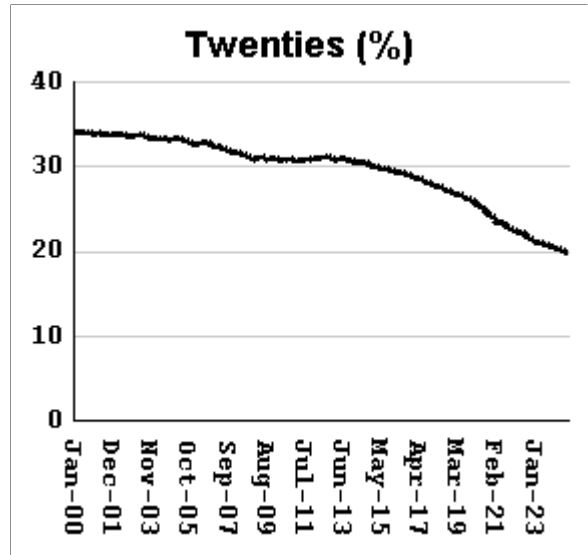
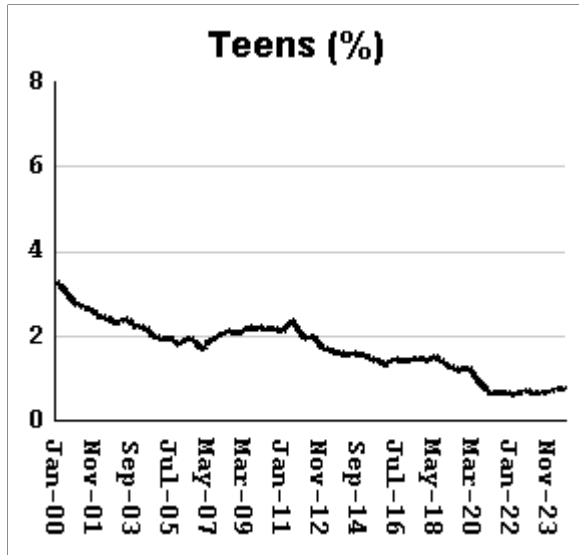
# Monthly counts of inmates by age group, Jan-2000 to Oct-2024

Y-axis of Twenties/Thirties/Forties/Fifties runs from 0 to 21,000. Y-axis of Teens/Sixty+ runs from 0 to 3,000.



# Monthly percentages of inmates by age group, Jan-2000 to Oct-2024

Y-axis of Twenties/Thirties/Forties/Fifties runs from 0% to 40%. Y-axis of Teens/Sixty+ runs from 0% to 8%

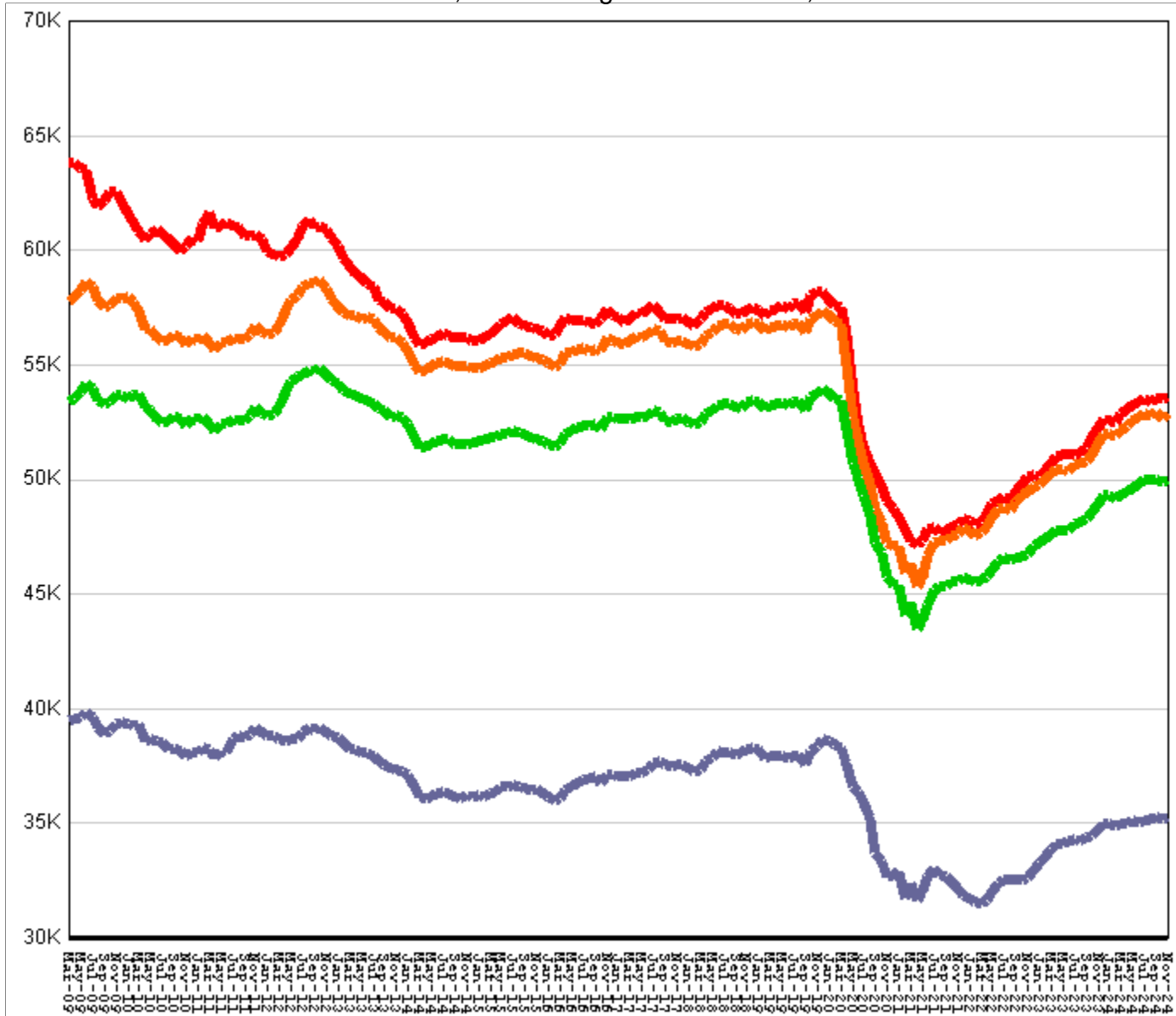


## Inmate counts & percentages by age, for past 48 months

Month	Avg Age	Teens		Twenties		Thirties		Forties		Fifties		Sixty & Up	
		Num-ber	Per-cent	Num-ber	Per-cent	Num-ber	Per-cent	Num-ber	Per-cent	Num-ber	Per-cent	Num-ber	Per-cent
Nov-20	40.43	353	0.76%	11174	24.03%	14190	30.52%	10350	22.26%	6571	14.13%	3871	8.33%
Dec-20	40.4	341	0.72%	11372	24.09%	14447	30.60%	10509	22.26%	6631	14.04%	3927	8.32%
Jan-21	40.52	305	0.66%	10948	23.83%	14059	30.61%	10262	22.34%	6468	14.08%	3906	8.50%
Feb-21	40.55	292	0.64%	10791	23.75%	14071	30.96%	10261	22.58%	6423	14.13%	3891	8.56%
Mar-21	40.59	297	0.65%	10664	23.49%	13999	30.84%	10172	22.41%	6371	14.04%	3905	8.60%
Apr-21	40.72	273	0.62%	10314	23.26%	13640	30.76%	9961	22.46%	6279	14.16%	3888	8.77%
May-21	40.65	290	0.64%	10583	23.44%	14017	31.04%	10173	22.53%	6371	14.11%	3941	8.73%
Jun-21	40.61	307	0.67%	10778	23.48%	14243	31.02%	10279	22.39%	6449	14.05%	3997	8.71%
Jul-21	40.61	316	0.68%	10852	23.34%	14428	31.03%	10383	22.33%	6493	13.96%	4040	8.69%
Aug-21	40.63	317	0.68%	10797	23.15%	14526	31.14%	10471	22.45%	6513	13.96%	4063	8.71%
Sep-21	40.67	317	0.68%	10739	22.96%	14596	31.21%	10494	22.44%	6522	13.94%	4118	8.80%
Oct-21	40.7	299	0.64%	10640	22.74%	14646	31.29%	10573	22.59%	6526	13.94%	4128	8.82%
Nov-21	40.72	299	0.64%	10628	22.65%	14704	31.34%	10650	22.70%	6534	13.93%	4144	8.83%
Dec-21	40.75	302	0.64%	10599	22.53%	14733	31.31%	10687	22.71%	6566	13.96%	4172	8.87%
Jan-22	40.81	293	0.63%	10476	22.44%	14641	31.36%	10640	22.79%	6571	14.07%	4179	8.95%
Feb-22	40.82	298	0.64%	10478	22.42%	14677	31.41%	10665	22.82%	6569	14.06%	4199	8.99%
Mar-22	40.82	295	0.63%	10525	22.34%	14768	31.35%	10728	22.77%	6579	13.96%	4228	8.97%
Apr-22	40.85	285	0.60%	10517	22.29%	14762	31.29%	10784	22.86%	6601	13.99%	4244	8.99%
May-22	40.88	282	0.60%	10501	22.23%	14813	31.36%	10817	22.90%	6602	13.98%	4280	9.06%
Jun-22	40.87	307	0.64%	10587	22.21%	14928	31.31%	10927	22.92%	6633	13.91%	4307	9.03%
Jul-22	40.91	316	0.66%	10542	22.06%	14970	31.32%	10970	22.95%	6675	13.97%	4334	9.07%
Aug-22	40.95	319	0.67%	10510	21.98%	15019	31.41%	11012	23.03%	6712	14.04%	4375	9.15%
Sep-22	40.99	316	0.66%	10428	21.77%	15042	31.40%	10983	22.93%	6740	14.07%	4407	9.20%
Oct-22	41.02	323	0.67%	10369	21.64%	15128	31.57%	11037	23.03%	6755	14.10%	4425	9.23%
Nov-22	41.03	334	0.69%	10393	21.56%	15232	31.60%	11139	23.11%	6802	14.11%	4470	9.27%
Dec-22	41.06	341	0.70%	10355	21.34%	15315	31.56%	11161	23.00%	6854	14.13%	4503	9.28%
Jan-23	41.09	329	0.68%	10332	21.24%	15396	31.65%	11199	23.03%	6874	14.13%	4546	9.35%
Feb-23	41.12	318	0.65%	10334	21.16%	15464	31.67%	11290	23.12%	6878	14.08%	4597	9.41%
Mar-23	41.11	318	0.65%	10388	21.13%	15554	31.64%	11378	23.15%	6927	14.09%	4598	9.35%
Apr-23	41.14	308	0.63%	10380	21.12%	15555	31.64%	11388	23.17%	6930	14.10%	4606	9.37%
May-23	41.17	314	0.64%	10335	21.11%	15557	31.78%	11364	23.21%	6923	14.14%	4621	9.44%
Jun-23	41.2	315	0.64%	10308	20.94%	15622	31.74%	11395	23.15%	6941	14.10%	4644	9.44%
Jul-23	41.23	321	0.65%	10319	20.90%	15694	31.79%	11506	23.30%	6978	14.13%	4680	9.48%
Aug-23	41.29	307	0.62%	10274	20.77%	15634	31.61%	11541	23.34%	6978	14.11%	4726	9.56%
Sep-23	41.31	317	0.64%	10289	20.73%	15652	31.54%	11605	23.39%	7004	14.11%	4762	9.60%
Oct-23	41.32	334	0.67%	10301	20.62%	15763	31.56%	11732	23.49%	7053	14.12%	4810	9.63%
Nov-23	41.34	335	0.66%	10393	20.62%	15862	31.46%	11862	23.53%	7120	14.12%	4846	9.61%
Dec-23	41.38	344	0.68%	10356	20.53%	15840	31.40%	11907	23.61%	7151	14.18%	4848	9.61%
Jan-24	41.4	349	0.69%	10339	20.48%	15917	31.54%	11919	23.61%	7182	14.23%	4869	9.65%
Feb-24	41.44	344	0.68%	10288	20.35%	15889	31.43%	11948	23.63%	7193	14.23%	4895	9.68%
Mar-24	41.46	351	0.69%	10298	20.31%	15910	31.37%	11996	23.65%	7230	14.26%	4933	9.73%
Apr-24	41.48	369	0.72%	10335	20.26%	15969	31.31%	12114	23.75%	7272	14.26%	4979	9.76%
May-24	41.51	381	0.74%	10330	20.18%	16006	31.27%	12137	23.71%	7305	14.27%	5028	9.82%
Jun-24	41.55	394	0.77%	10317	20.14%	16020	31.27%	12144	23.70%	7282	14.21%	5083	9.92%
Jul-24	41.58	392	0.76%	10301	20.10%	16047	31.31%	12224	23.85%	7291	14.22%	5131	10.01%
Aug-24	41.61	378	0.74%	10233	19.96%	16026	31.26%	12227	23.85%	7271	14.18%	5136	10.02%
Sep-24	41.65	377	0.74%	10187	19.89%	15963	31.17%	12249	23.92%	7281	14.22%	5159	10.07%
Oct-24	41.68	375	0.73%	10217	19.88%	16007	31.14%	12254	23.84%	7318	14.24%	5226	10.17%

## All housed offenders under GDC jurisdiction

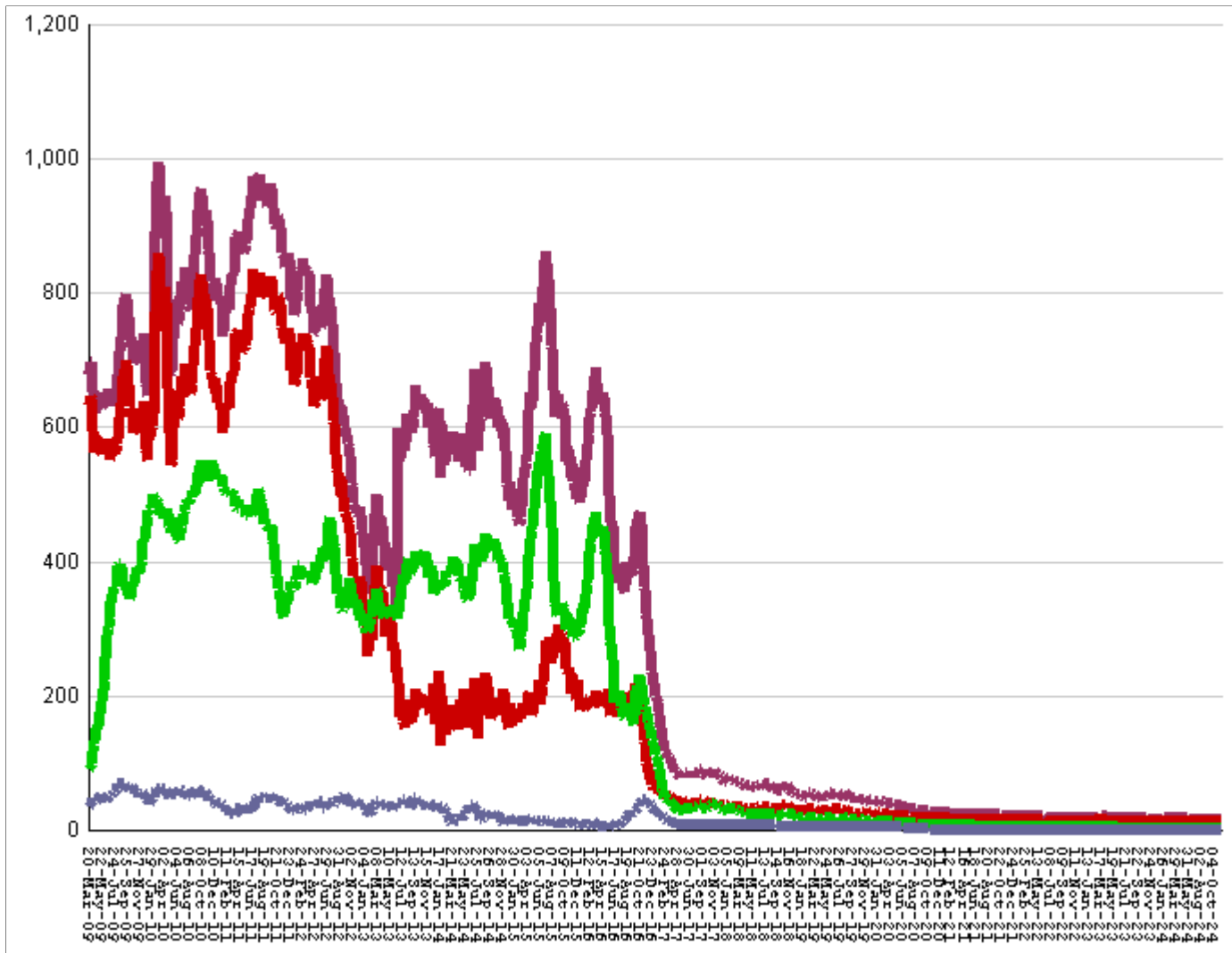
March 20, 2009 through November 15, 2024



<b>All in bed + probs in jail + backlog</b>	<b>RISE BY</b>	<b>68</b>	<b>from</b>	<b>53,536</b>	<b>to</b>	<b>53,604</b>
Probationers in jail	....	....	...	15	at	15
Inmate jail backlog	falls by	14	from	724	to	710
<b>All in beds: inmate + Prob + parole</b>	<b>RISE BY</b>	<b>82</b>	<b>from</b>	<b>52,797</b>	<b>to</b>	<b>52,879</b>
Total probationers in beds	RISE BY	43	from	2,811	to	2,854
Probation detention centers	RISE BY	67	from	1,307	to	1,374
Probation boot camps	fall by		from		to	
Probation RSAT	fall by	24	from	1504	to	1,480
Parole revocation centers	fall by		from		to	
<b>All in inmate beds: state + other</b>	<b>RISE BY</b>	<b>39</b>	<b>from</b>	<b>49,986</b>	<b>to</b>	<b>50,025</b>
Other inmate facilities :	fall by	38	from	14,740	to	14,702
Inmate boot camps	...	...	...	1	at	1
Private prisons	RISE BY	2	from	7549	to	7,551
County prisons	fall by	31	from	4434	to	4,403
Transitional centers	fall by	9	from	2756	to	2,747
<b>In state prisons only</b>	<b>RISE BY</b>	<b>77</b>	<b>from</b>	<b>35,246</b>	<b>to</b>	<b>35,323</b>

# Probationers in jail awaiting placement in facilities

March 20, 2009 through November 15, 2024



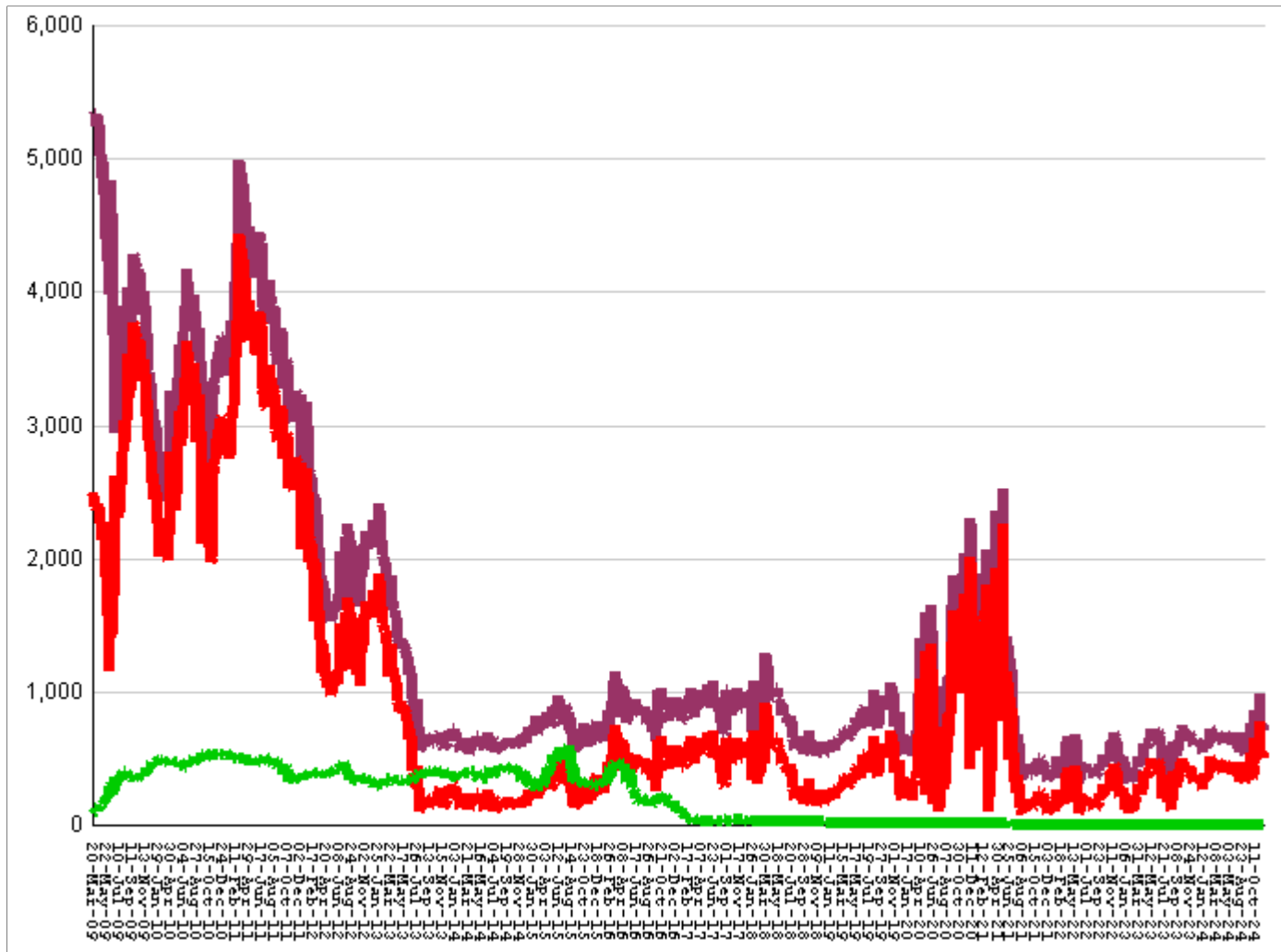
This graph shows, for each Friday since March 20 2009, the number of sentenced felony probationers who were waiting in jail for placement in facilities that GDC operates for housing probationers -- detention centers, probation residential substance abuse treatment (RSAT) centers, and probation boot camps. Counts include both those offenders sentenced directly from court, and those whose street probation was revoked.

Total probationers waiting in jail	...	...	...	level	at	15
... waiting for detention centers	...	...	...	level	at	12
... waiting for probation RSAT	...	...	...	level	at	2
... waiting for probation boot camps	...	...	...	level	at	1

The highest number of probationers waiting in jail was	994	on	05-MAR-10
... highest number waiting for detention centers was	859	on	05-MAR-10
... highest number waiting for probation RSAT was	592	on	10-JUL-15
... highest number waiting for probation boot camps was	70	on	18-SEP-09

# State inmates in jail awaiting placement in facilities

March 20, 2009 through November 15, 2024

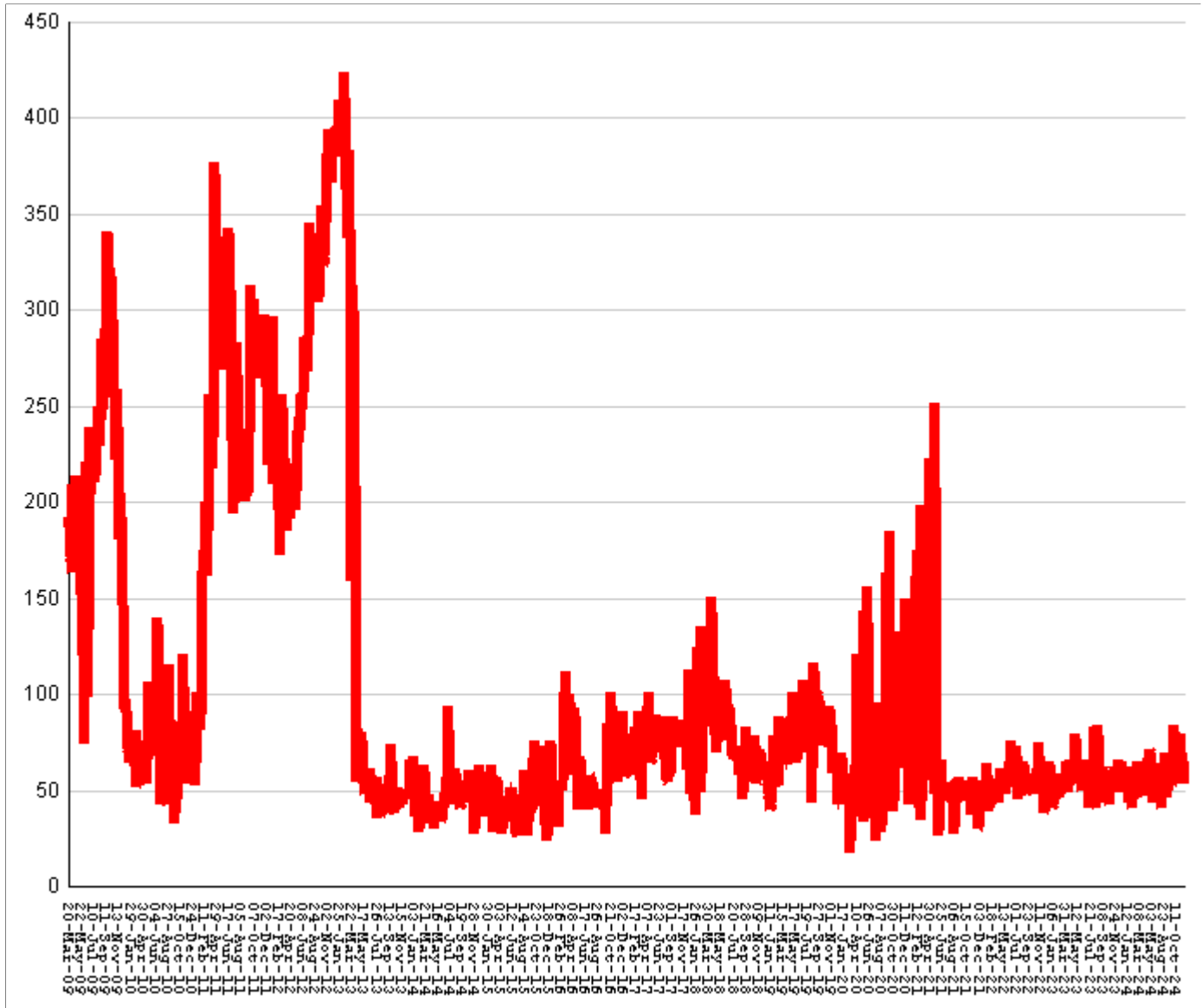


This graph shows, for each Friday since March 2009, the number of prisoners, probationers, and parolees in local jails who have been sentenced or revoked to state prison and whose documents have been received and verified by GDC. Most are almost immediately assigned to a diagnostic center, and are designated as in "admission processing". Of those a few hundred may be in the "transportation delayed" category because there is no room in the assigned diagnostic center, or because the inmate is being held for medical reasons, or for other court proceedings, or other reasons. Those remaining are "ready to be picked up".

<b>Total state inmates waiting in jail</b>	<b>fall by</b>	<b>14</b>	<b>from</b>	<b>724</b>	<b>to</b>	<b>710</b>
<b>... not yet assigned to a diagnostic center</b>	<b>...</b>	<b>...</b>	<b>...</b>	<b>level</b>	<b>at</b>	<b>25</b>
<b>... total "in admission processing"</b>	<b>fall by</b>	<b>14</b>	<b>from</b>	<b>699</b>	<b>to</b>	<b>685</b>
<b>... with "transportation delayed"</b>	<b>fall by</b>	<b>2</b>	<b>from</b>	<b>189</b>	<b>to</b>	<b>187</b>
<b>... ready to be picked up</b>	<b>fall by</b>	<b>12</b>	<b>from</b>	<b>510</b>	<b>to</b>	<b>498</b>

<b>The highest number of state inmates waiting in jail was</b>	<b>5338</b>	<b>on</b>	<b>27-MAR-09</b>
<b>... highest number not asg to a diagnostic center was</b>	<b>2881</b>	<b>on</b>	<b>12-JUN-09</b>
<b>... highest number in admission processing was</b>	<b>4916</b>	<b>on</b>	<b>25-MAR-11</b>
<b>... highest number with transportation delayed was</b>	<b>645</b>	<b>on</b>	<b>14-JAN-11</b>
<b>... highest number ready to be pickup was</b>	<b>4435</b>	<b>on</b>	<b>25-MAR-11</b>

## Female state inmates in jail awaiting pickup March 20, 2009 through November 15, 2024



This graph shows, for each Friday since March 2009, the number of female state prisoners in local jails who were assigned to diagnostic centers but had not yet been picked up.

<b>Female state inmates in jails waiting picked up</b>	...	...	...	<b>level</b>	<b>at</b>	<b>53</b>
<b>The highest number of female inmates waiting in jail was</b>	<b>424</b>	<b>on</b>	<b>01-FEB-13</b>			
<b>The lowest number of female inmates waiting in jail was</b>	<b>17</b>	<b>on</b>	<b>20-MAR-20</b>			



## Summary of housed prisoners, parolees, and probationers

Week ending	Prison	Parole	Probation			Prison+parole+probation	Jail		Total
	Total inmates	Revocation centers	Prob RSAT	Boot camp	Detention		Inmate backlog	Probationers	Prison+parole+probation+jail
24-Nov-2023	49087		1424		1262	51773	694	17	52484
01-Dec-2023	49237		1401		1265	51903	621	17	52541
08-Dec-2023	49227		1387		1266	51880	593	17	52490
15-Dec-2023	49240		1410		1263	51913	631	17	52561
22-Dec-2023	49353		1411		1276	52040	634	17	52691
29-Dec-2023	49410		1374		1227	52011	652	17	52680
05-Jan-2024	49392		1405		1237	52034	534	17	52585
12-Jan-2024	49307		1402		1219	51928	567	17	52512
19-Jan-2024	49259		1398		1255	51912	604	17	52533
26-Jan-2024	49243		1425		1273	51941	603	17	52561
02-Feb-2024	49176		1411		1327	51914	614	18	52546
09-Feb-2024	49108		1408		1335	51851	577	18	52446
16-Feb-2024	49160		1406		1343	51909	598	18	52525
23-Feb-2024	49131		1423		1346	51900	620	18	52538
01-Mar-2024	49200		1449		1358	52007	643	18	52668
08-Mar-2024	49218		1430		1400	52048	673	18	52739
15-Mar-2024	49255		1435		1412	52102	702	18	52822
22-Mar-2024	49304		1417		1404	52125	675	18	52818
29-Mar-2024	49434		1459		1392	52285	722	18	53025
05-Apr-2024	49389		1507		1409	52305	680	18	53003
12-Apr-2024	49458		1454		1406	52318	666	18	53002
19-Apr-2024	49474		1455		1417	52346	692	18	53056
26-Apr-2024	49533		1477		1436	52446	639	18	53103
03-May-2024	49550		1512		1421	52483	660	18	53161
10-May-2024	49492		1504		1422	52418	643	18	53079
17-May-2024	49615		1451		1410	52476	645	18	53139
24-May-2024	49652		1443		1453	52548	688	18	53254
31-May-2024	49785		1467		1444	52696	612	18	53326
07-Jun-2024	49769		1491		1410	52670	608	17	53295
14-Jun-2024	49784		1492		1419	52695	631	17	53343
21-Jun-2024	49907		1472		1410	52789	643	17	53449
28-Jun-2024	49944		1476		1369	52789	687	17	53493
05-Jul-2024	49897		1493		1369	52759	690	16	53465
12-Jul-2024	50027		1472		1392	52891	549	17	53457
19-Jul-2024	50007		1496		1418	52921	588	17	53526
26-Jul-2024	49939		1433		1447	52819	631	17	53467
02-Aug-2024	49931		1424		1438	52793	598	17	53408
09-Aug-2024	49870		1418		1417	52705	526	17	53248
16-Aug-2024	49881		1429		1400	52710	609	17	53336
23-Aug-2024	49950		1453		1388	52791	598	17	53406
30-Aug-2024	50050		1466		1417	52933	598	17	53548
06-Sep-2024	49948		1452		1456	52856	549	17	53422
13-Sep-2024	49996		1457		1449	52902	535	17	53454
20-Sep-2024	50025		1467		1428	52920	660	17	53597
27-Sep-2024	49948		1515		1424	52887	755	17	53659
04-Oct-2024	49700		1465		1324	52489	989	17	53495
11-Oct-2024	49904		1490		1297	52691	857	16	53564
18-Oct-2024	49937		1494		1257	52688	769	16	53473
25-Oct-2024	49914		1461		1245	52620	766	16	53402
01-Nov-2024	49982		1487		1290	52759	760	16	53535
08-Nov-2024	49986		1504		1307	52797	724	15	53536
15-Nov-2024	50025		1480		1374	52879	710	15	53604

## Offenders housed in facilities for state prisoners

Week ending	In state prisons	In facilities other than state prisons						Total Inmates
		Transition centers	County prisons	Pre-rel centers	Private prisons	Inmate boot camps	Total others	
24-Nov-2023	34833	2191	4450		7613	0	14254	49087
01-Dec-2023	34916	2209	4494		7617	1	14321	49237
08-Dec-2023	34883	2216	4485		7642	1	14344	49227
15-Dec-2023	34920	2206	4503		7610	1	14320	49240
22-Dec-2023	34948	2235	4522		7647	1	14405	49353
29-Dec-2023	34970	2234	4530		7676	0	14440	49410
05-Jan-2024	34991	2232	4509		7660	0	14401	49392
12-Jan-2024	34944	2226	4532		7605	0	14363	49307
19-Jan-2024	34914	2219	4528		7598	0	14345	49259
26-Jan-2024	34920	2233	4519		7571	0	14323	49243
02-Feb-2024	34889	2224	4509		7554	0	14287	49176
09-Feb-2024	34842	2208	4485		7573	0	14266	49108
16-Feb-2024	34875	2205	4508		7572	0	14285	49160
23-Feb-2024	34855	2215	4481		7580	0	14276	49131
01-Mar-2024	34885	2227	4497		7591	0	14315	49200
08-Mar-2024	34943	2226	4457		7592	0	14275	49218
15-Mar-2024	34936	2264	4446		7609	0	14319	49255
22-Mar-2024	34924	2323	4463		7594	0	14380	49304
29-Mar-2024	34993	2389	4450		7602	0	14441	49434
05-Apr-2024	34968	2415	4435		7571	0	14421	49389
12-Apr-2024	34979	2429	4473		7577	0	14479	49458
19-Apr-2024	34957	2461	4467		7589	0	14517	49474
26-Apr-2024	35020	2512	4410		7591	0	14513	49533
03-May-2024	35061	2528	4395		7566	0	14489	49550
10-May-2024	35022	2558	4364		7548	0	14470	49492
17-May-2024	35118	2584	4358		7555	0	14497	49615
24-May-2024	35109	2638	4355		7550	0	14543	49652
31-May-2024	35123	2674	4440		7548	0	14662	49785
07-Jun-2024	35023	2682	4494		7570	0	14746	49769
14-Jun-2024	34995	2718	4500		7571	0	14789	49784
21-Jun-2024	35048	2737	4524		7598	0	14859	49907
28-Jun-2024	35076	2740	4540		7588	0	14868	49944
05-Jul-2024	35064	2729	4531		7573	0	14833	49897
12-Jul-2024	35172	2754	4521		7580	0	14855	50027
19-Jul-2024	35164	2754	4505		7584	0	14843	50007
26-Jul-2024	35139	2751	4478		7571	0	14800	49939
02-Aug-2024	35134	2752	4502		7543	0	14797	49931
09-Aug-2024	35109	2749	4482		7529	1	14761	49870
16-Aug-2024	35109	2747	4489		7535	1	14772	49881
23-Aug-2024	35149	2756	4507		7537	1	14801	49950
30-Aug-2024	35243	2761	4517		7528	1	14807	50050
06-Sep-2024	35195	2716	4508		7528	1	14753	49948
13-Sep-2024	35217	2752	4493		7533	1	14779	49996
20-Sep-2024	35238	2746	4506		7534	1	14787	50025
27-Sep-2024	35230	2724	4475		7518	1	14718	49948
04-Oct-2024	35111	2663	4437		7488	1	14589	49700
11-Oct-2024	35197	2679	4493		7534	1	14707	49904
18-Oct-2024	35211	2739	4469		7517	1	14726	49937
25-Oct-2024	35182	2745	4466		7520	1	14732	49914
01-Nov-2024	35239	2765	4442		7535	1	14743	49982
08-Nov-2024	35246	2756	4434		7549	1	14740	49986
15-Nov-2024	35323	2747	4403		7551	1	14702	50025

## Offenders waiting in local jails for state facilities

Week ending	Probationers waiting in jail				State prisoners waiting in jail					Assigned females
	.. for PDCs	.. for RSAT	.. for boot camps	Total	Total backlog	Not yet assigned	In adm process	Delayed transport	Ready for pickup	
24-Nov-2023	13	3	1	17	694	33	661	221	440	53
01-Dec-2023	13	3	1	17	621	37	584	233	351	49
08-Dec-2023	13	3	1	17	593	41	552	231	321	53
15-Dec-2023	13	3	1	17	631	40	591	237	354	65
22-Dec-2023	13	3	1	17	634	40	594	241	353	66
29-Dec-2023	13	3	1	17	652	40	612	243	369	60
05-Jan-2024	13	3	1	17	534	40	494	236	258	53
12-Jan-2024	13	3	1	17	567	39	528	225	303	62
19-Jan-2024	13	3	1	17	604	36	568	215	353	59
26-Jan-2024	13	3	1	17	603	37	566	205	361	52
02-Feb-2024	14	3	1	18	614	37	577	208	369	50
09-Feb-2024	14	3	1	18	577	37	540	197	343	41
16-Feb-2024	14	3	1	18	598	36	562	199	363	43
23-Feb-2024	14	3	1	18	620	35	585	196	389	53
01-Mar-2024	14	3	1	18	643	40	603	188	415	54
08-Mar-2024	14	3	1	18	673	37	636	185	451	57
15-Mar-2024	14	3	1	18	702	37	665	188	477	52
22-Mar-2024	14	3	1	18	675	37	638	195	443	65
29-Mar-2024	14	3	1	18	722	23	699	192	507	61
05-Apr-2024	14	3	1	18	680	23	657	190	467	49
12-Apr-2024	14	3	1	18	666	22	644	187	457	47
19-Apr-2024	14	3	1	18	692	25	667	185	482	53
26-Apr-2024	14	3	1	18	639	26	613	189	424	58
03-May-2024	14	3	1	18	660	24	636	193	443	69
10-May-2024	14	3	1	18	643	23	620	193	427	71
17-May-2024	14	3	1	18	645	23	622	196	426	57
24-May-2024	14	3	1	18	688	24	664	191	473	67
31-May-2024	14	3	1	18	612	25	587	195	392	63
07-Jun-2024	13	3	1	17	608	25	583	193	390	57
14-Jun-2024	13	3	1	17	631	24	607	188	419	43
21-Jun-2024	13	3	1	17	643	24	619	187	432	58
28-Jun-2024	13	3	1	17	687	26	661	189	472	64
05-Jul-2024	12	3	1	16	690	27	663	193	470	50
12-Jul-2024	13	3	1	17	549	28	521	188	333	41
19-Jul-2024	13	3	1	17	588	28	560	180	380	50
26-Jul-2024	13	3	1	17	631	29	602	183	419	54
02-Aug-2024	13	3	1	17	598	27	571	181	390	59
09-Aug-2024	13	3	1	17	526	28	498	179	319	46
16-Aug-2024	13	3	1	17	609	24	585	184	401	69
23-Aug-2024	13	3	1	17	598	24	574	185	389	61
30-Aug-2024	13	3	1	17	598	25	573	186	387	63
06-Sep-2024	13	3	1	17	549	25	524	182	342	59
13-Sep-2024	13	3	1	17	535	25	510	183	327	56
20-Sep-2024	13	3	1	17	660	26	634	182	452	84
27-Sep-2024	13	3	1	17	755	27	728	184	544	52
04-Oct-2024	13	3	1	17	989	25	964	183	781	79
11-Oct-2024	12	3	1	16	857	26	831	185	646	69
18-Oct-2024	12	3	1	16	769	25	744	188	556	57
25-Oct-2024	12	3	1	16	766	26	740	192	548	57
01-Nov-2024	12	3	1	16	760	25	735	186	549	69
08-Nov-2024	12	2	1	15	724	25	699	189	510	53
15-Nov-2024	12	2	1	15	710	25	685	187	498	53