

# Friday Report – overview and contents

The pages in The Friday Report are about adult offenders in Georgia’s prisons and jails. They contain statistical snapshots and trends in the populations and movements of offenders in the state prison system, on probation, on parole, and in local jails. Information comes from databases of the Georgia Department of Corrections (GDC) and the Board of Pardons and Paroles, and from data provided by local jailers. Information is summarized into tables in the GDC/Parole Data Warehouse, and is extracted into these pages each Friday. Pages are organized according to the table that supplied the data.

The Monthly Research Table, named “MO_RESRCH” or simply “MO”, contains data about state prisoners, grouped into statistically interesting categories. The table contains one record per month, from January 2000 to the present. Despite its being “monthly”, it is updated weekly, because some data trickles in for several weeks before it becomes stable history.	
Page	Contents
MO-01	Clemencies and maxouts. Monthly graph from 2000 to present shows the monthly departures from prison via actions by the Georgia Parole Board (clemencies), and via service of 100% of the court ordered sentence (maxouts)
MO-02	48 months of releases. Table shows counts and percentages of releases via clemencies and maxouts, with and without probation to follow, for each of the past 48 months.
MO-03	Methamphetamine. Monthly graph from 2000 to present shows admissions, departures, population, and percent of population of inmates with a current offense of methamphetamine possession, sale, manufacturing, or trafficking, and the changing racial composition of the methamphetamine population.
MO-04	Non-violent first incarcerants. Monthly graph from 2000 to present shows admissions, departures, population, and percent of population of inmates without violent or sex crimes, who are serving their first Georgia felony incarceration.
MO-05	Seven Deadly Sins. Monthly graph from 2000 to present shows admissions, departures, population, and percent of population of inmates convicted of kidnapping, armed robbery, rape, aggravated sodomy, aggravated sexual battery, and aggravated child molestation, for whom especially severe penalties are prescribed.
MO-06	48 months of inmate subpopulations. Table shows number and percentage of white and non-white inmates with methamphetamine offenses, and non-violent first incarcerants, and inmates convicted of the Seven Deadly Sins.
MO-07	Inmate age overview. Line graph shows the average age of the inmate population, by month from 2000 to the present. Pie chart shows the number of currently active inmates in their teens, twenties, thirties, forties, fifties, and age sixty+.
MO-08	Counts by age group. Graphs show the count, by month from 2000 to the present, of inmates in their teens, twenties, thirties, forties, fifties, and age sixty+.
MO-09	Percentages by age group. Graphs show the <i>percentages</i> , by month from 2000 to the present, of inmates in their teens, twenties, thirties, forties, fifties, and age sixty+.
MO-10	48 months of inmate ages. Table shows average age of the standing population, and counts and percentages of teens, twenties, thirties, forties, fifties, and sixty+, for each of the past 48 months.

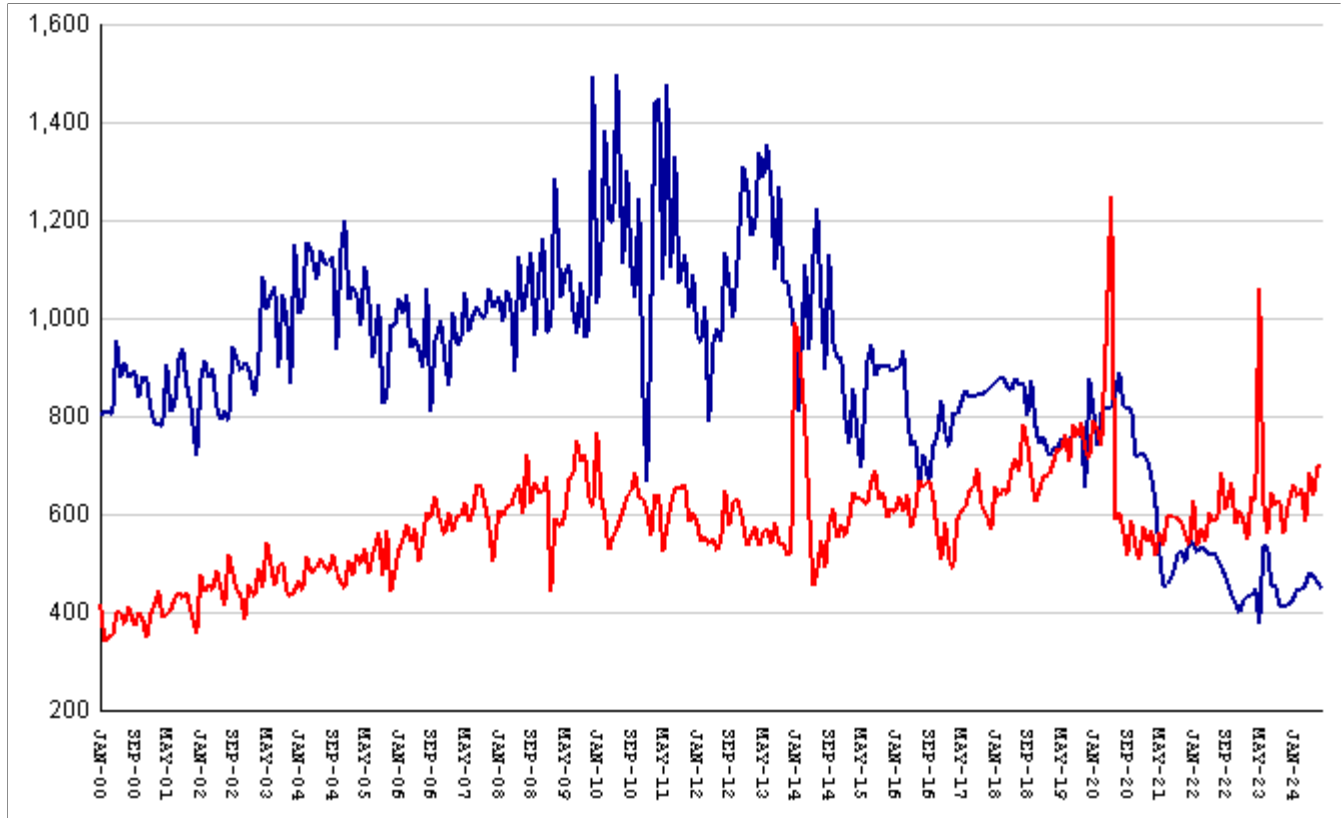
# Friday Report – overview and contents *(continued)*

The MSR Table is based on the Management Summary Report (MSR), a snapshot report posted each week in GDC's Scribe database. MSR_RESRCH gathers that data into weekly trends, with one record for each Friday since March 20th, 2009.	
Page	Contents
MSR-01	All housed offenders. Weekly graph from March 20, 2009 to present, showing counts of inmates in state prisons, transitional centers, county prisons, private prisons, inmate boot camps, parole revocation centers, probation Residential Substance Abuse Treatment (RSAT), probation boot camps, probation detention centers, plus the inmate jail backlog and probationers in jail waiting for state facilities.
MSR-02	Probationers in jail. Weekly graph from March 20, 2009 to present, showing counts of probationers in local jails awaiting placement in probation detention centers, probation RSAT centers, and probation boot camps.
MSR-03	State inmates in jail. Weekly graph from March 20, 2009 to present, showing counts of state inmates in local jails awaiting placement in state prison facilities – including those who have not yet been assigned to a diagnostic center, those whose transportation has been delayed for some reason, and those who are ready to be picked up.
MSR-04	Female state inmates in jail. Weekly graph from March 20, 2009 to present, showing counts of female state inmates awaiting placement in a state prison for females.
MSR-05	52-week table: housed offenders. Data for each of the past 52 weeks, showing total prison inmates, parolees in revocation centers, probationers in RSAT/boot camp/detention centers, inmate jail backlog, probationers in jail waiting for facilities, with subtotals.
MSR-06	52-week table: state prisoners. Data for each of the past 52 weeks, showing inmates in state prisons, transition centers, county prisons, pre-release centers, private prisons, and inmate boot camps, with subtotals.
MSR-07	52-week table: waiting in jail. Data for each of the past 52 weeks, showing probationers waiting for detention centers, RSAT, and boot camp; and state prisoners not yet assigned to diagnostic centers, in admission process, with delayed transport, and ready for pickup, with subtotals.

The DCA table consists mainly of data submitted from each of Georgia's 140+ local jails, via the Georgia Crime Information Center (GCIC) to the Georgia Department of Community Affairs (DCA), which publishes its <u><a href="#">County Jail Inmate Population Report</a></u> on its web site each month. GDC has collected summary statewide data from this report every month since its inception in January, 1993. The table also contains the inmate jail backlog as computed by GDC for the last Friday of each month, for comparison with the jailers' count of state inmates. Although nominally a monthly table, DCA_RESRCH is updated weekly to insure that the DCA data is correctly synchronized with the GDC jail backlog data.	
Page	Contents
DCA-01	Jail composition. Monthly graph from 1993 to the present shows trends in the numbers of unsentenced inmates, state inmates, county inmates, and other inmates.
DCA-02	Two views of jail backlog. Monthly graph from 1993 to present compares jailers' count of "state inmates" with GDC's count of the "inmate jail backlog", and explains that both are valid counts of different phenomena.
DCA-03	48-month table: local jails. Data from Georgia jailers for each of the past 48 months, showing total jail population, capacity, utilization, and number and percent of unsentenced inmates, state inmates, county inmates, and other inmates.

# Releases by clemency and maxout, Jan-2000 to Aug-2024

There are two main ways of being released from a Georgia prison -- by actions of the Board of Pardons and Paroles ("Clemencies") and by service of 100% of the court-ordered sentences ("Maxouts"). "Clemency" includes paroles, reprieves, commutations, and transfer to other confinement prior to expiration of sentence. "Other Releases" includes deaths, and sentences modified or overturned by the courts. Clemencies and maxouts may or may not be followed by periods of probation.



A. Clemency with probation to follow	falls by	20	from	402	to	382
B. Clemency only	RISES BY	6	from	61	to	67
C. Maxout with probation to follow	RISES BY	11	from	630	to	641
D. Maxout only (unsupervised)	falls by	10	from	69	to	59
E. Other releases	falls by	19	from	38	to	19
F. Total releases (A+B+C+D+E)	falls by	32	from	1200	to	1168
<b>G. Total clemencies (A+B) (top line)</b>	<b>falls by</b>	<b>14</b>	<b>from</b>	<b>463</b>	<b>to</b>	<b>449</b>
<b>H. Total maxouts(C+D) (bottom line)</b>	<b>RISES BY</b>	<b>1</b>	<b>from</b>	<b>699</b>	<b>to</b>	<b>700</b>
I. % of releases by clemency (G/F)	falls by	.14%	from	38.58%	to	38.44%
J. % of releases by maxout (H/F)	RISES BY	1.68%	from	58.25%	to	59.93%
K. Supervised releases (A+B+C)	falls by	3	from	1093	to	1090
L. % unsupervised releases (D/F)	falls by	.7%	from	5.75%	to	5.05%
M. % supervised releases (K/F)	RISES BY	2.24%	from	91.08%	to	93.32%

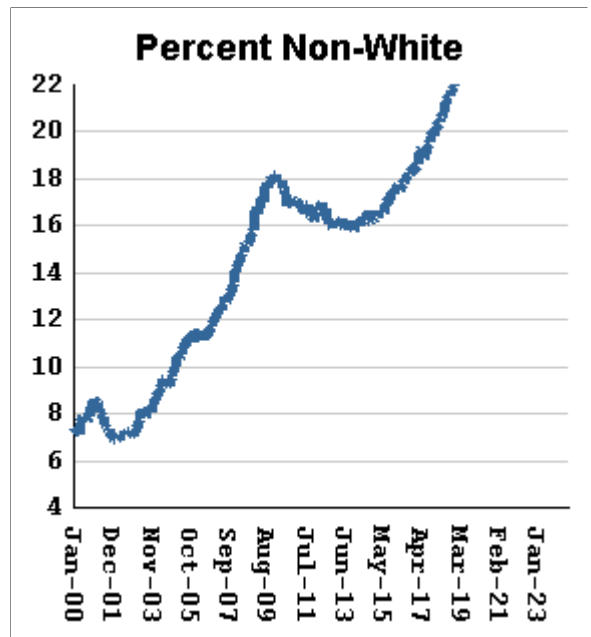
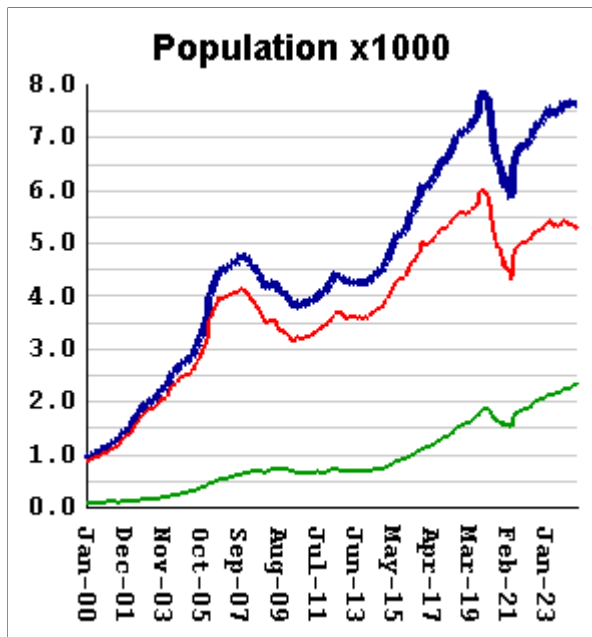
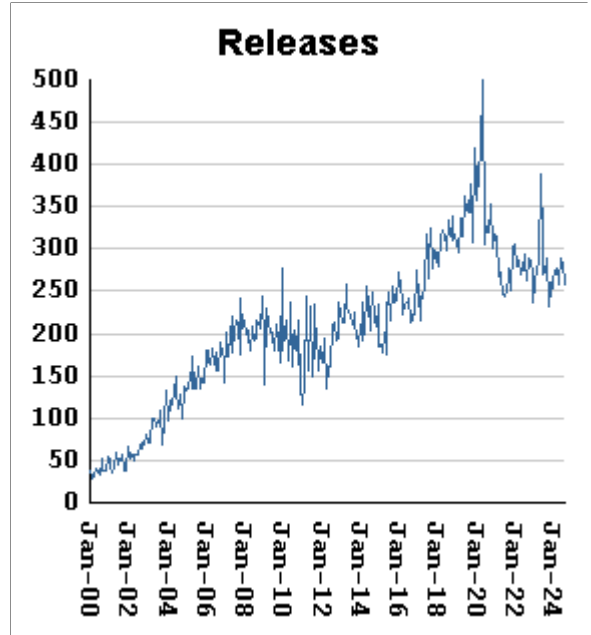
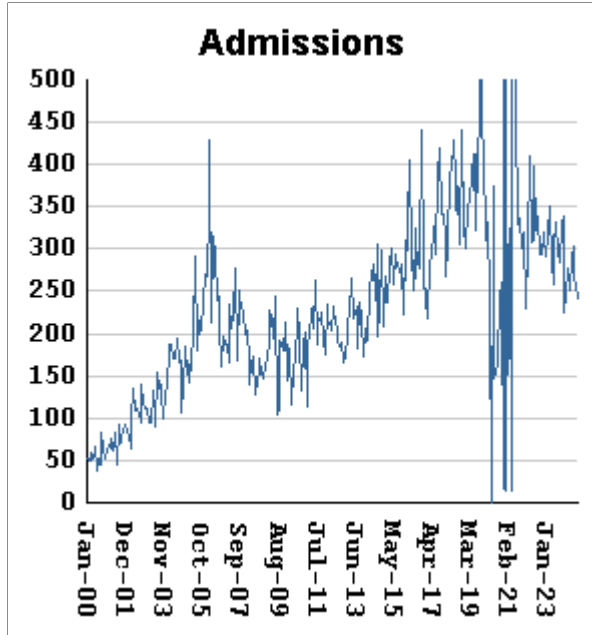
## Monthly releases from prison by type of release, for the past 48 months

Month	A	B	C	D	E	F	G	H	I	J
	Clemency + Prob	Clemency Only	Maxout + Prob	Maxout Only	Other Rels	Total Releases (A+B+C+D+E)	Total Clemency (A+B)	Total Maxout (C+D)	Percent Clemency (G/F)	Percent Maxout (H/F)
Sep-20	686	131	450	66	33	1366	817	516	59.81%	37.77%
Oct-20	694	122	517	69	29	1431	816	586	57.02%	40.95%
Nov-20	598	119	480	53	21	1271	717	533	56.41%	41.94%
Dec-20	623	100	446	60	18	1247	723	506	57.98%	40.58%
Jan-21	634	91	516	58	21	1320	725	574	54.92%	43.48%
Feb-21	616	96	481	62	20	1275	712	543	55.84%	42.59%
Mar-21	570	106	495	71	16	1258	676	566	53.74%	44.99%
Apr-21	532	97	454	61	24	1168	629	515	53.85%	44.09%
May-21	445	78	508	54	21	1106	523	562	47.29%	50.81%
Jun-21	366	86	467	68	21	1008	452	535	44.84%	53.08%
Jul-21	390	67	534	63	19	1073	457	597	42.59%	55.64%
Aug-21	411	70	532	63	28	1104	481	595	43.57%	53.89%
Sep-21	443	76	523	67	32	1141	519	590	45.49%	51.71%
Oct-21	448	77	527	55	21	1128	525	582	46.54%	51.60%
Nov-21	424	80	493	65	18	1080	504	558	46.67%	51.67%
Dec-21	469	82	482	57	18	1108	551	539	49.73%	48.65%
Jan-22	459	80	552	75	26	1192	539	627	45.22%	52.60%
Feb-22	445	79	466	70	24	1084	524	536	48.34%	49.45%
Mar-22	460	73	514	57	16	1120	533	571	47.59%	50.98%
Apr-22	457	71	471	70	16	1085	528	541	48.66%	49.86%
May-22	441	77	541	63	26	1148	518	604	45.12%	52.61%
Jun-22	459	62	529	57	21	1128	521	586	46.19%	51.95%
Jul-22	443	67	528	61	14	1113	510	589	45.82%	52.92%
Aug-22	426	66	617	67	21	1197	492	684	41.10%	57.14%
Sep-22	398	77	551	57	18	1101	475	608	43.14%	55.22%
Oct-22	376	59	605	61	23	1124	435	666	38.70%	59.25%
Nov-22	366	53	523	55	19	1016	419	578	41.24%	56.89%
Dec-22	344	58	551	58	28	1039	402	609	38.69%	58.61%
Jan-23	375	51	528	58	23	1035	426	586	41.16%	56.62%
Feb-23	390	44	497	49	17	997	434	546	43.53%	54.76%
Mar-23	377	55	575	61	24	1092	432	636	39.56%	58.24%
Apr-23	390	57	572	55	26	1100	447	627	40.64%	57.00%
May-23	328	46	935	127	20	1456	374	1062	25.69%	72.94%
Jun-23	462	71	568	58	19	1178	533	626	45.25%	53.14%
Jul-23	461	73	515	44	25	1118	534	559	47.76%	50.00%
Aug-23	404	50	592	52	22	1120	454	644	40.54%	57.50%
Sep-23	408	51	577	43	10	1089	459	620	42.15%	56.93%
Oct-23	364	50	578	51	31	1074	414	629	38.55%	58.57%
Nov-23	356	55	497	63	19	990	411	560	41.52%	56.57%
Dec-23	367	46	555	57	21	1046	413	612	39.48%	58.51%
Jan-24	369	60	601	60	32	1122	429	661	38.24%	58.91%
Feb-24	395	52	576	62	24	1109	447	638	40.31%	57.53%
Mar-24	380	63	591	63	20	1117	443	654	39.66%	58.55%
Apr-24	412	45	528	57	33	1075	457	585	42.51%	54.42%
May-24	427	55	613	71	26	1192	482	684	40.44%	57.38%
Jun-24	408	65	574	62	23	1132	473	636	41.78%	56.18%
Jul-24	402	61	630	69	38	1200	463	699	38.58%	58.25%
Aug-24	382	67	641	59	19	1168	449	700	38.44%	59.93%

# Inmates with meth crimes, by month, Jan-2000 to Aug-2024

Methamphetamine is one of the most addictive drugs ever known. At first it induces intense euphoria, but with continued use causes severe depression and physical deterioration, including the dental catastrophe known as "meth mouth".

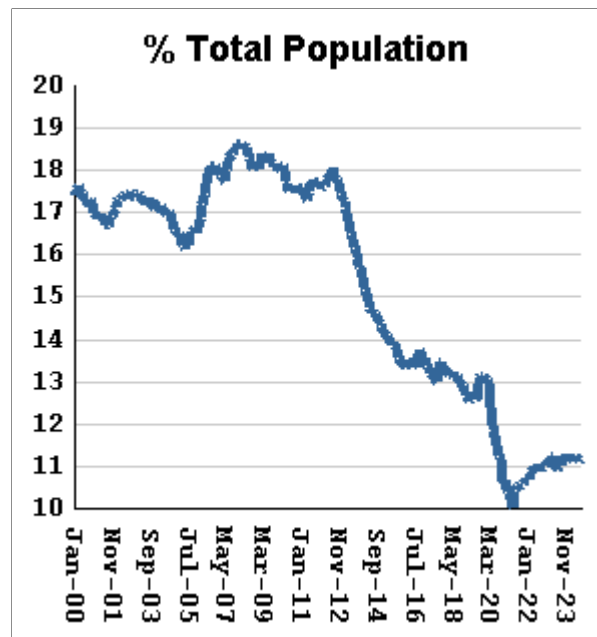
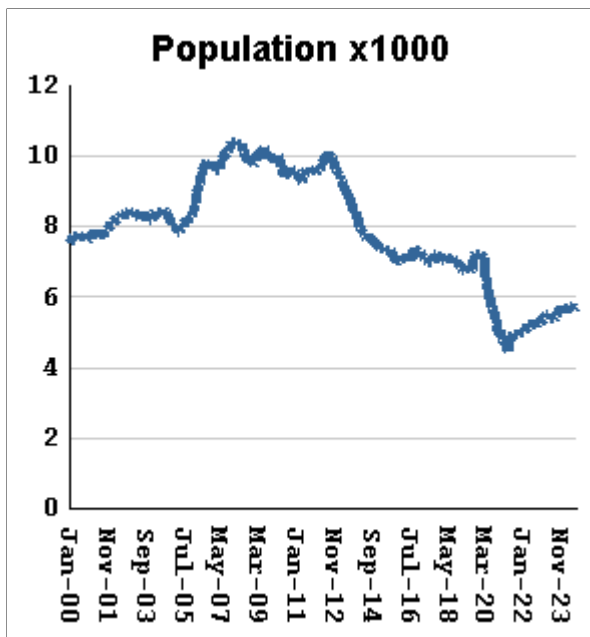
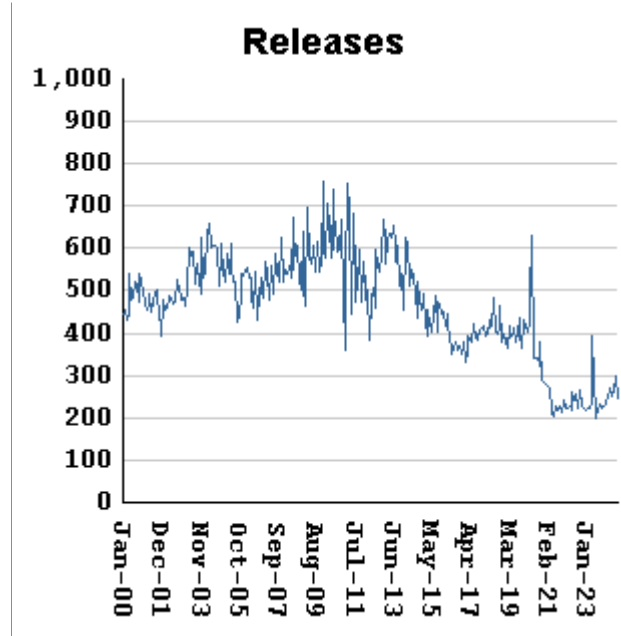
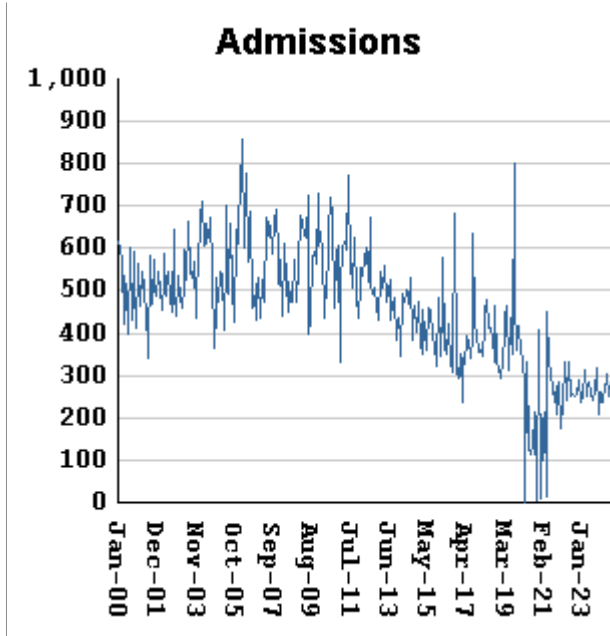
Georgia's meth epidemic peaked in 2007-2008, then declined, but is again growing. It started in the predominantly white northern counties, with blacks accounting for only about 5% of convictions. But black usage has expanded, and now accounts for about 15% of convictions.



Methamphetamine admissions	fall by	15	from	256	to	241
Methamphetamine releases	fall by	24	from	283	to	259
Methamphetamine population	falls by	18	from	7629	to	7611
Meth white population	falls by	32	from	5315	to	5283
Meth non-white population	falls by	7	from	2335	to	2328
Percent meth inmates who are non-white	falls by	.02 %	from	30.61%	to	30.59%

# Non-violent first-incarcerants, by month, Jan-2000 to Aug-2024

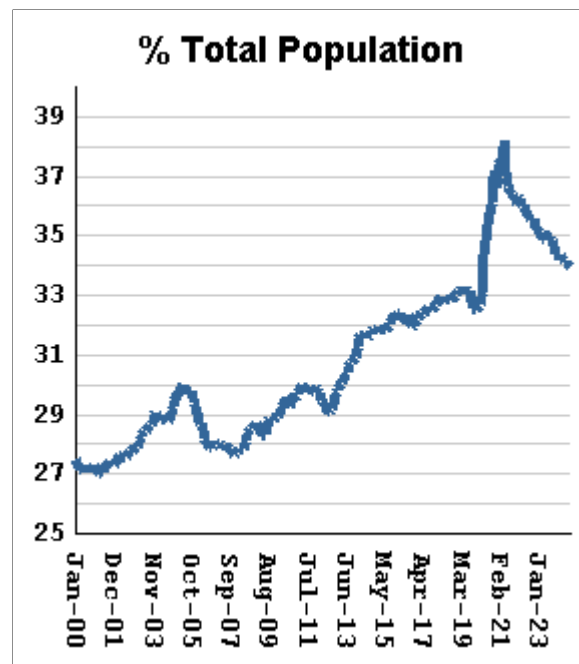
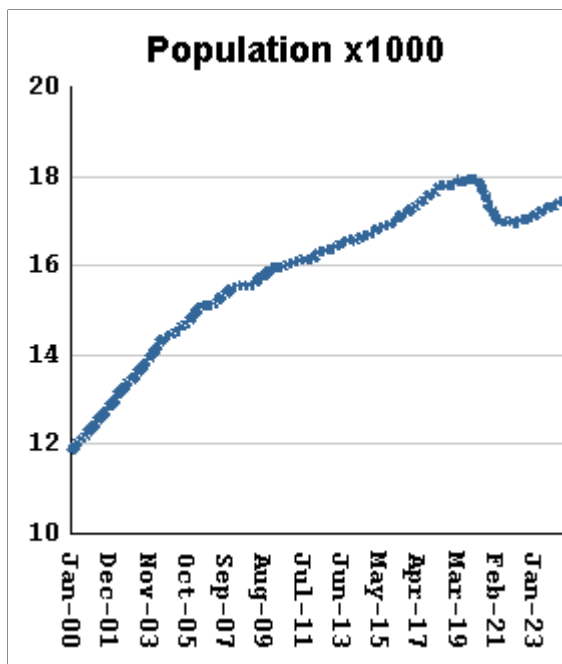
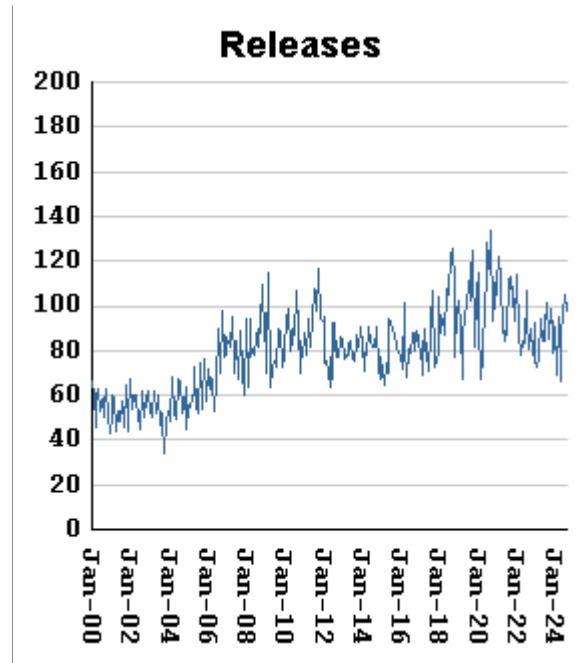
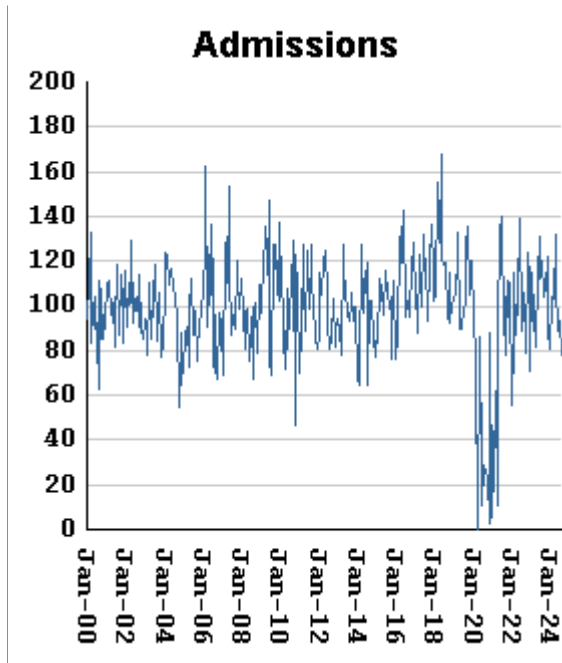
Historically, about one in six Georgia prison inmates has been a first-time incarcerant with a non-violent crime. In 2012 Georgia passed HB1176, which aimed to curb the growth of prison population by steering the least dangerous, least hardened offenders away from prison through pre-trial intervention, diversion, drug courts and treatment programs, and raising the dollar thresholds that define property felonies. The expectation is that over time, these measures will reduce the percentage of first-time non-violent incarcerants in prison.



Non-viol/1st-Incar admissions	fall by	29	from	285	to	256
Non-viol/1st-Incar releases	fall by	51	from	297	to	246
Non-viol/1st-Incar population	RISES BY	10	from	5715	to	5725
Non-viol/1st-Incar % of total population	RISES BY	.02 %	from	11.15%	to	11.17%

# "Seven Deadly Sins" by month, Jan-2000 to Aug-2024

Tough legislation in 1995 imposed mandatory ten-year minimum terms for kidnapping, armed robbery, rape, aggravated sodomy, aggravated sexual battery, and aggravated child molestation, and a minimum of 25 years for murder. A second conviction resulted in life without parole. As predicted, longer prison terms caused population to climb steeply for about a decade. It then began to level off, as releases started catching up with admissions. The 2008 dip in percentage of total population (bottom right) was caused by the surge of methamphetamine convictions (Page MO-03). Note: these graphs include inmates convicted before 1995.



"Seven Deadly Sin" admissions	fall by	15	from	93	to	78
"Seven Deadly Sin" releases	fall by	7	from	105	to	98
"Seven Deadly Sin" population	falls by	20	from	17435	to	17415
"Seven Deadly Sin" % of total population	falls by	.04 %	from	34.01%	to	33.97%

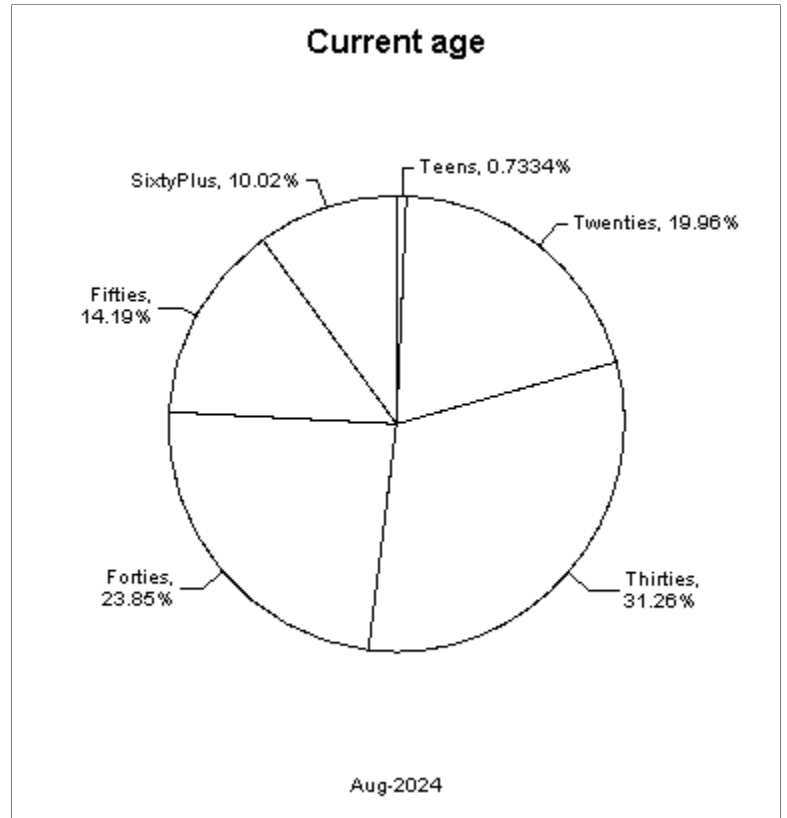
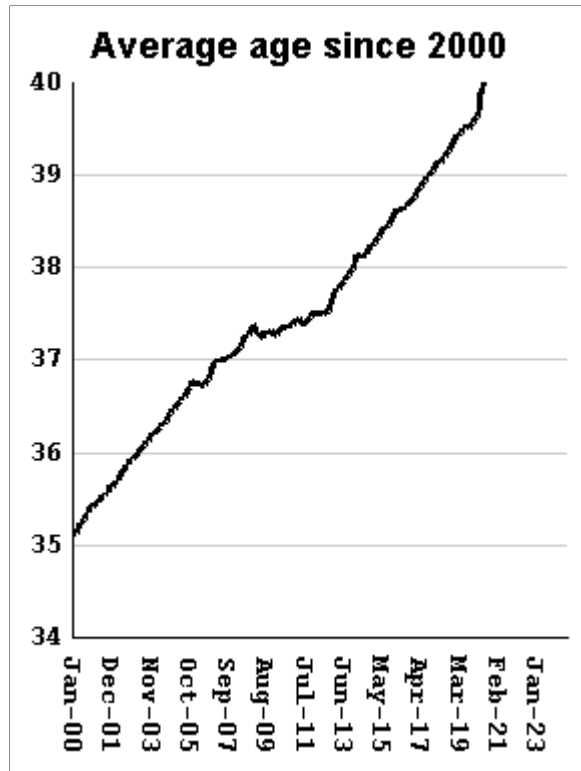
## Inmate subpopulation counts and percentages, for the past 48 months

Month	Methamphetamine						1st Incar Non-Violent		Seven Deadly Sins	
	Total Number	Total Percent	White Number	White Percent	Non White Number	Non White Percent	Number	Percent	Number	Percent
Sep-20	6474	13.39%	4933	76.20%	1617	24.98%	5373	11.12%	17450	36.10%
Oct-20	6382	13.38%	4801	75.23%	1587	24.87%	5207	10.92%	17380	36.44%
Nov-20	6095	13.11%	4562	74.85%	1538	25.23%	4923	10.59%	17273	37.15%
Dec-20	6349	13.45%	4741	74.67%	1613	25.41%	5045	10.68%	17262	36.56%
Jan-21	6046	13.16%	4515	74.68%	1536	25.41%	4776	10.40%	17157	37.35%
Feb-21	6023	13.25%	4512	74.91%	1566	26.00%	4690	10.32%	17063	37.54%
Mar-21	6081	13.40%	4497	73.95%	1589	26.13%	4636	10.21%	17014	37.48%
Apr-21	5824	13.13%	4299	73.82%	1530	26.27%	4435	10.00%	16937	38.19%
May-21	6163	13.65%	4599	74.62%	1632	26.48%	4677	10.36%	16934	37.50%
Jun-21	6427	14.00%	4746	73.84%	1719	26.75%	4797	10.45%	16984	36.99%
Jul-21	6646	14.29%	4885	73.50%	1766	26.57%	4882	10.50%	17035	36.63%
Aug-21	6721	14.41%	4940	73.50%	1795	26.71%	4919	10.54%	17010	36.46%
Sep-21	6790	14.52%	4980	73.34%	1815	26.73%	4953	10.59%	17006	36.36%
Oct-21	6813	14.56%	4998	73.36%	1820	26.71%	4952	10.58%	16971	36.26%
Nov-21	6879	14.66%	5053	73.46%	1840	26.75%	5007	10.67%	16977	36.18%
Dec-21	6895	14.65%	5058	73.36%	1842	26.72%	5049	10.73%	16994	36.12%
Jan-22	6820	14.61%	5010	73.46%	1843	27.02%	5000	10.71%	16936	36.27%
Feb-22	6846	14.65%	5034	73.53%	1868	27.29%	5016	10.73%	16932	36.23%
Mar-22	6968	14.79%	5070	72.76%	1903	27.31%	5121	10.87%	16960	35.99%
Apr-22	6991	14.81%	5084	72.72%	1912	27.35%	5163	10.94%	16969	35.96%
May-22	7034	14.89%	5110	72.65%	1946	27.67%	5144	10.89%	16989	35.96%
Jun-22	7155	15.01%	5181	72.41%	1981	27.69%	5235	10.98%	17045	35.75%
Jul-22	7184	15.03%	5188	72.22%	2001	27.85%	5229	10.94%	17029	35.62%
Aug-22	7238	15.13%	5241	72.41%	2023	27.95%	5262	11.00%	17024	35.59%
Sep-22	7268	15.17%	5223	71.86%	2049	28.19%	5247	10.95%	17049	35.58%
Oct-22	7274	15.18%	5248	72.15%	2055	28.25%	5275	11.01%	17038	35.55%
Nov-22	7310	15.16%	5298	72.48%	2053	28.08%	5309	11.01%	17084	35.44%
Dec-22	7347	15.14%	5295	72.07%	2056	27.98%	5374	11.07%	17103	35.24%
Jan-23	7403	15.22%	5329	71.98%	2092	28.26%	5393	11.09%	17100	35.15%
Feb-23	7466	15.29%	5361	71.81%	2123	28.44%	5421	11.10%	17142	35.10%
Mar-23	7537	15.33%	5409	71.77%	2132	28.29%	5510	11.21%	17159	34.90%
Apr-23	7536	15.33%	5416	71.87%	2124	28.18%	5515	11.22%	17147	34.87%
May-23	7406	15.13%	5327	71.93%	2107	28.45%	5384	11.00%	17178	35.08%
Jun-23	7404	15.04%	5298	71.56%	2110	28.50%	5375	10.92%	17225	34.99%
Jul-23	7466	15.12%	5359	71.78%	2146	28.74%	5428	10.99%	17245	34.92%
Aug-23	7485	15.13%	5330	71.21%	2158	28.83%	5447	11.01%	17264	34.90%
Sep-23	7482	15.08%	5325	71.17%	2159	28.86%	5485	11.05%	17283	34.82%
Oct-23	7581	15.17%	5394	71.15%	2198	28.99%	5576	11.16%	17293	34.61%
Nov-23	7659	15.19%	5438	71.00%	2223	29.02%	5663	11.23%	17326	34.36%
Dec-23	7638	15.14%	5420	70.96%	2220	29.07%	5642	11.18%	17335	34.36%
Jan-24	7624	15.10%	5406	70.91%	2242	29.41%	5665	11.22%	17325	34.32%
Feb-24	7628	15.09%	5388	70.63%	2241	29.38%	5649	11.17%	17360	34.33%
Mar-24	7603	14.99%	5349	70.35%	2255	29.66%	5659	11.16%	17368	34.24%
Apr-24	7637	14.97%	5356	70.13%	2293	30.02%	5685	11.15%	17434	34.18%
May-24	7678	15.00%	5363	69.85%	2316	30.16%	5740	11.21%	17456	34.10%
Jun-24	7656	14.94%	5349	69.87%	2308	30.15%	5727	11.18%	17447	34.05%
Jul-24	7629	14.88%	5315	69.67%	2335	30.61%	5715	11.15%	17435	34.01%
Aug-24	7611	14.84%	5283	69.41%	2328	30.59%	5725	11.17%	17415	33.97%



# Overview of inmate age statistics, Jan-2000 to Aug-2024

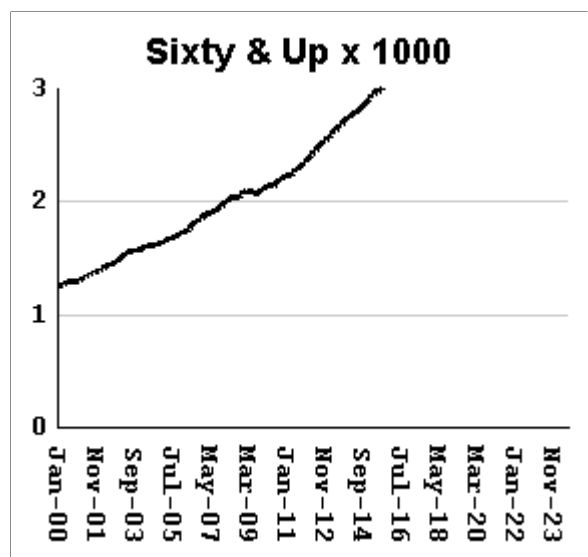
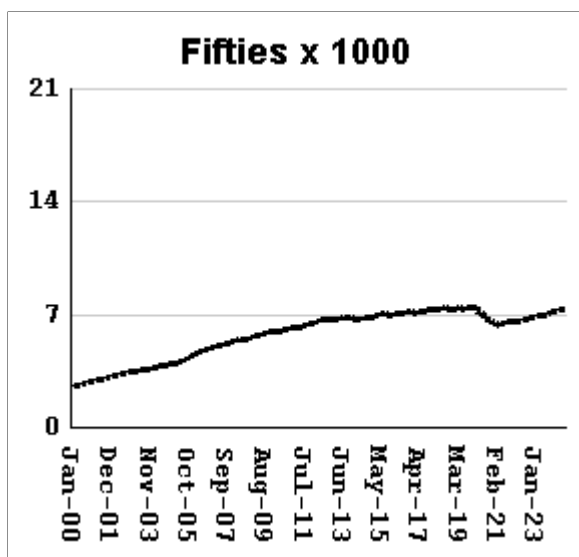
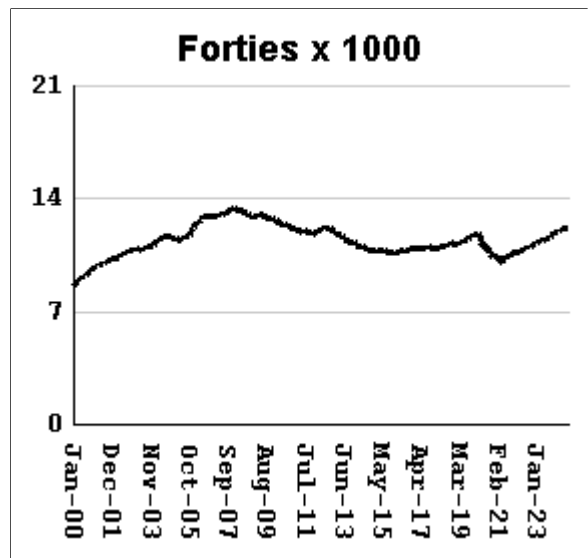
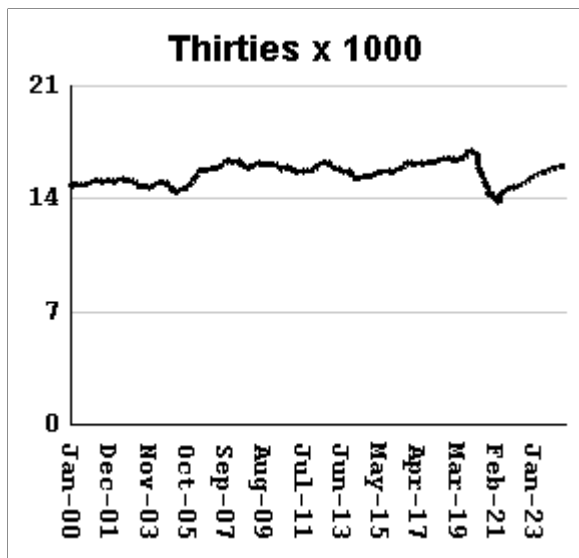
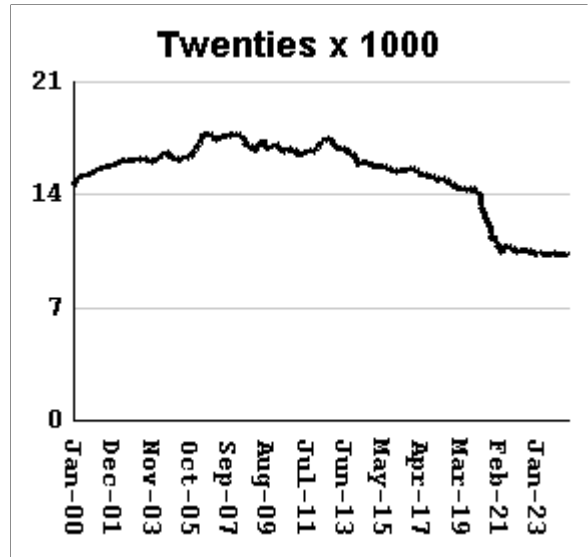
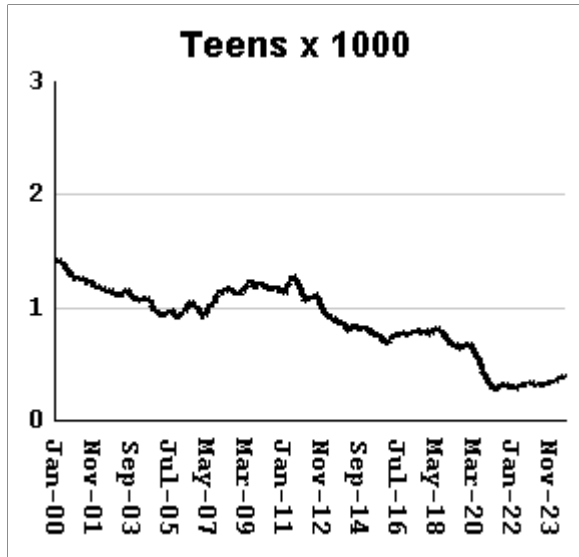
The "aging inmate population" is a concern in correctional systems throughout America, including Georgia. Here, the increase in inmate age is the result of several factors. Teenagers have been steered away from prison by increased usage of probation and other alternatives, at least for their first convictions. And there has been a surge of middle-aged male sex offenders due to the expanding "It's OK to tell" ethos. But most importantly, more severe sentence lengths and release policies have greatly increased the length of time that most offenders -- especially violent ones -- spend in prison, thereby increasing their average age.



Average age of active inmates	RISES BY	.03	from	41.58	to	41.61
Number in their teens	falls by	15	from	391	to	376
Percentage in their teens	falls by	.03%	from	.76%	to	0.73%
Number in their twenties	falls by	69	from	10,302	to	10,233
Percentage in their twenties	falls by	0.14%	from	20.10%	to	19.96%
Number in their thirties	falls by	19	from	16,045	to	16,026
Percentage in their thirties	falls by	0.04%	from	31.30%	to	31.26%
Number in their forties	RISES BY	1	from	12,225	to	12,226
Percentage in their forties	falls by	0.01%	from	23.85%	to	23.84%
Number in their fifties	falls by	18	from	7,292	to	7,274
Percentage in their fifties	falls by	0.04%	from	14.23%	to	14.19%
Number age sixty and up	RISES BY	5	from	5,131	to	5,136
Percentage age sixty and up	RISES BY	.01%	from	10.01%	to	10.02%

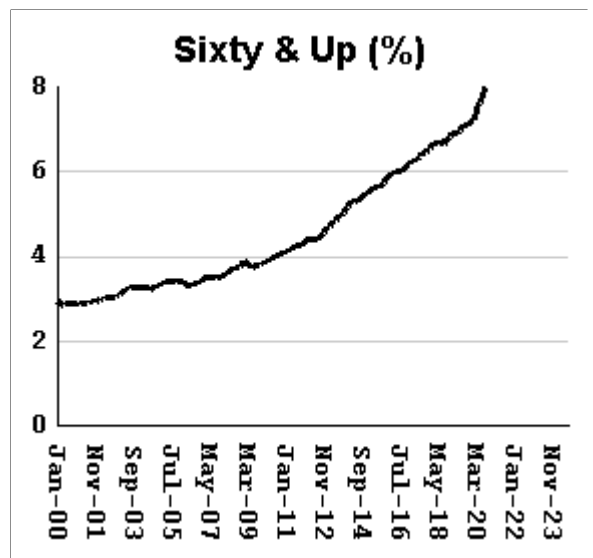
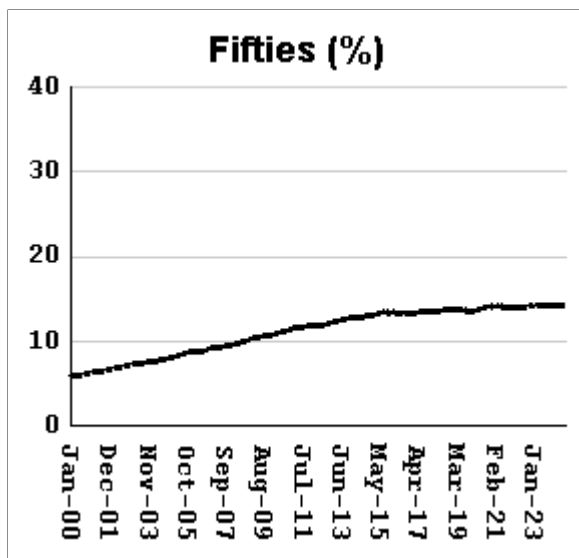
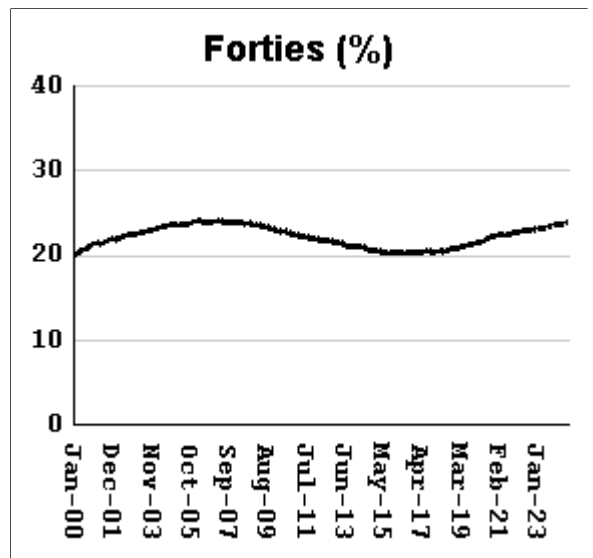
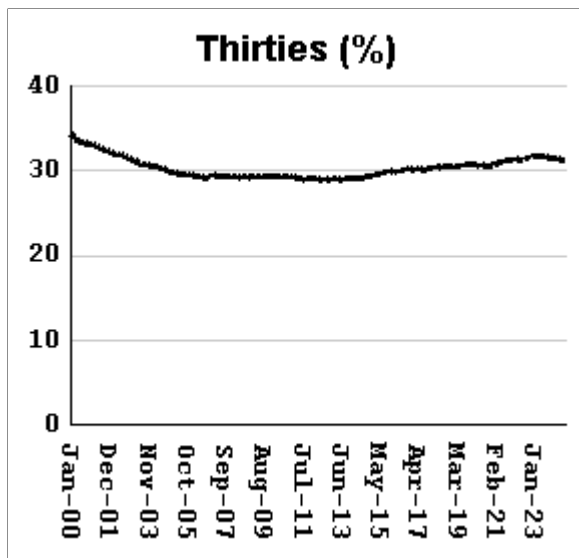
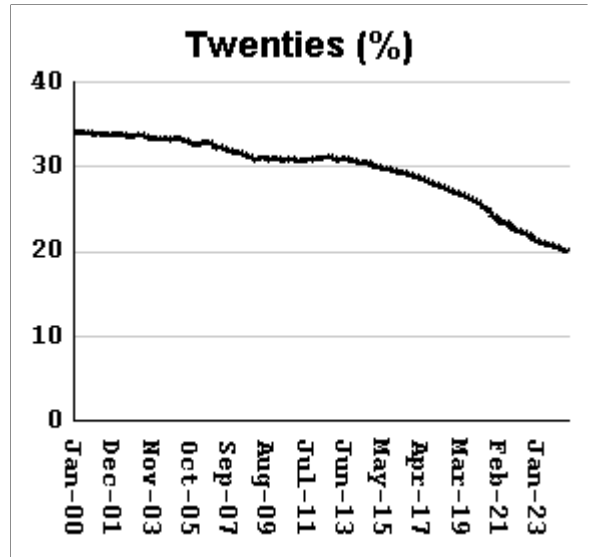
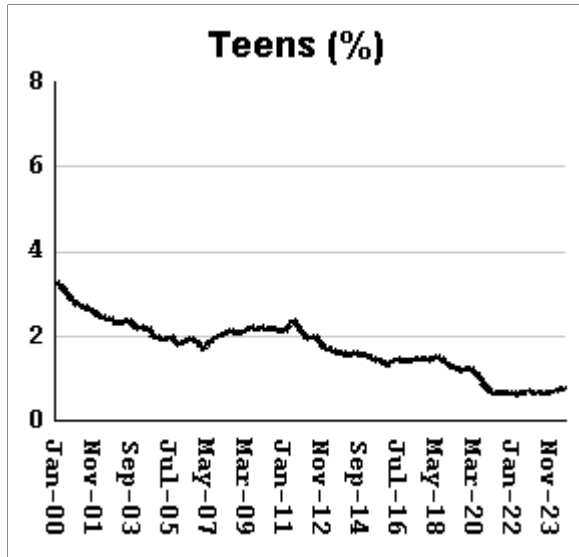
# Monthly counts of inmates by age group, Jan-2000 to Aug-2024

Y-axis of Twenties/Thirties/Forties/Fifties runs from 0 to 21,000. Y-axis of Teens/Sixty+ runs from 0 to 3,000.



# Monthly percentages of inmates by age group, Jan-2000 to Aug-2024

Y-axis of Twenties/Thirties/Forties/Fifties runs from 0% to 40%. Y-axis of Teens/Sixty+ runs from 0% to 8%

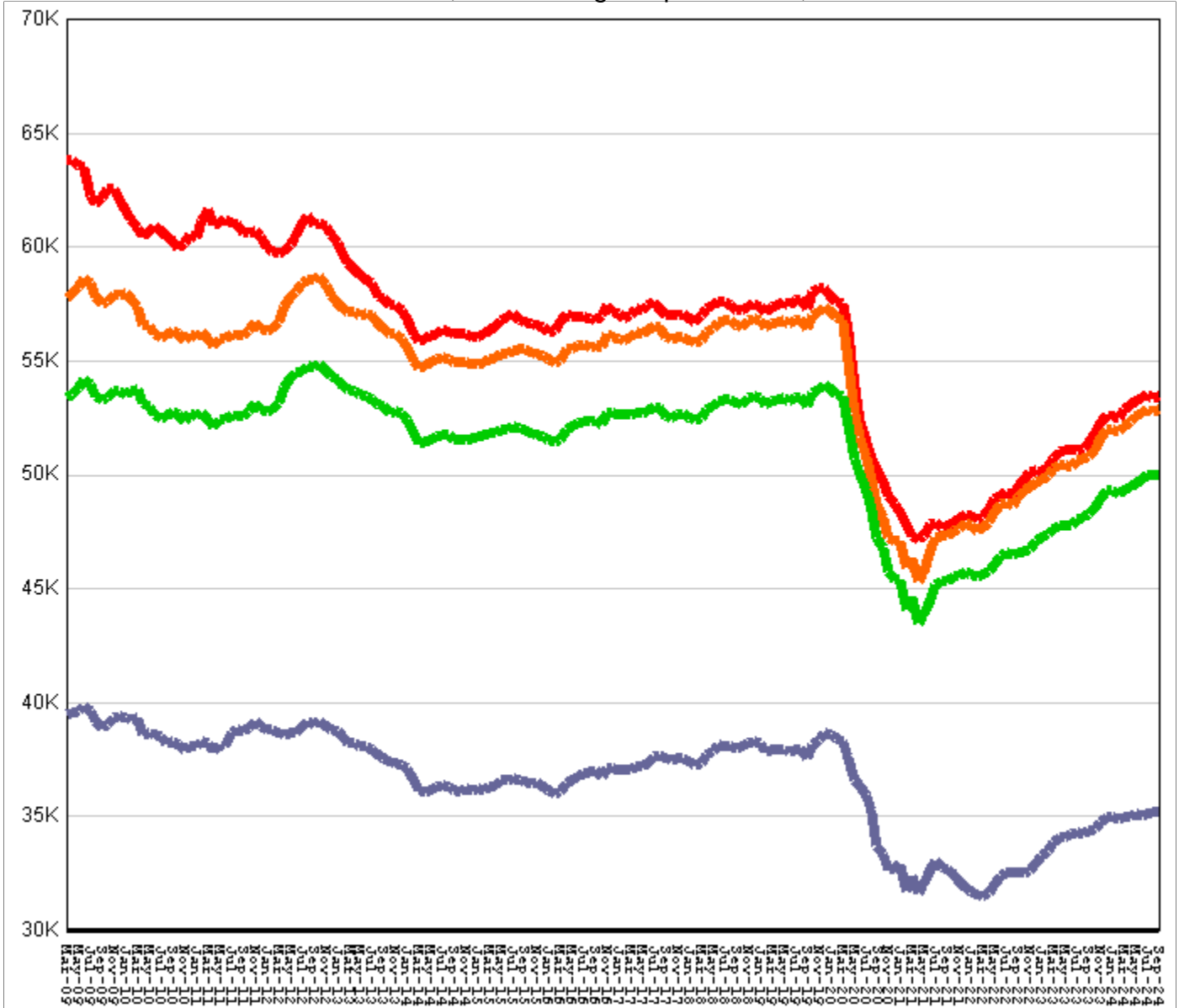


## Inmate counts & percentages by age, for past 48 months

Month	Avg Age	Teens		Twenties		Thirties		Forties		Fifties		Sixty & Up	
		Number	Per-cent	Number	Per-cent	Number	Per-cent	Number	Per-cent	Number	Per-cent	Number	Per-cent
Sep-20	40.22	418	0.86%	11925	24.67%	14809	30.64%	10716	22.17%	6789	14.04%	3895	8.06%
Oct-20	40.3	391	0.82%	11610	24.34%	14550	30.51%	10577	22.18%	6702	14.05%	3881	8.14%
Nov-20	40.43	353	0.76%	11174	24.03%	14189	30.52%	10351	22.26%	6572	14.13%	3871	8.33%
Dec-20	40.4	341	0.72%	11372	24.09%	14446	30.60%	10510	22.26%	6632	14.05%	3927	8.32%
Jan-21	40.52	305	0.66%	10948	23.83%	14058	30.60%	10263	22.34%	6469	14.08%	3906	8.50%
Feb-21	40.56	292	0.64%	10791	23.74%	14070	30.96%	10262	22.58%	6424	14.13%	3891	8.56%
Mar-21	40.59	297	0.65%	10664	23.49%	13998	30.84%	10173	22.41%	6372	14.04%	3905	8.60%
Apr-21	40.72	273	0.62%	10314	23.26%	13639	30.76%	9962	22.46%	6280	14.16%	3888	8.77%
May-21	40.65	290	0.64%	10583	23.43%	14016	31.04%	10174	22.53%	6372	14.11%	3941	8.73%
Jun-21	40.61	307	0.67%	10778	23.47%	14242	31.02%	10280	22.39%	6450	14.05%	3997	8.71%
Jul-21	40.61	316	0.68%	10852	23.34%	14427	31.02%	10384	22.33%	6494	13.96%	4040	8.69%
Aug-21	40.63	317	0.68%	10797	23.14%	14525	31.13%	10472	22.45%	6514	13.96%	4063	8.71%
Sep-21	40.67	317	0.68%	10739	22.96%	14595	31.20%	10495	22.44%	6523	13.94%	4118	8.80%
Oct-21	40.71	299	0.64%	10641	22.74%	14645	31.29%	10574	22.59%	6527	13.95%	4128	8.82%
Nov-21	40.72	299	0.64%	10629	22.65%	14704	31.34%	10651	22.70%	6535	13.93%	4144	8.83%
Dec-21	40.75	303	0.64%	10600	22.53%	14733	31.31%	10688	22.71%	6567	13.96%	4172	8.87%
Jan-22	40.81	294	0.63%	10477	22.44%	14641	31.35%	10641	22.79%	6572	14.07%	4179	8.95%
Feb-22	40.82	299	0.64%	10478	22.42%	14678	31.41%	10666	22.82%	6570	14.06%	4199	8.99%
Mar-22	40.82	296	0.63%	10525	22.34%	14770	31.35%	10729	22.77%	6580	13.96%	4228	8.97%
Apr-22	40.85	286	0.61%	10517	22.29%	14764	31.29%	10785	22.85%	6602	13.99%	4244	8.99%
May-22	40.88	282	0.60%	10502	22.23%	14815	31.36%	10818	22.90%	6603	13.98%	4280	9.06%
Jun-22	40.87	307	0.64%	10588	22.20%	14930	31.31%	10928	22.92%	6634	13.91%	4307	9.03%
Jul-22	40.91	316	0.66%	10544	22.06%	14972	31.32%	10970	22.95%	6676	13.97%	4334	9.07%
Aug-22	40.95	319	0.67%	10512	21.98%	15021	31.41%	11012	23.02%	6712	14.03%	4376	9.15%
Sep-22	40.99	316	0.66%	10430	21.77%	15044	31.40%	10983	22.92%	6740	14.07%	4408	9.20%
Oct-22	41.02	323	0.67%	10371	21.64%	15130	31.57%	11037	23.03%	6755	14.09%	4426	9.24%
Nov-22	41.03	334	0.69%	10395	21.56%	15234	31.60%	11139	23.10%	6802	14.11%	4471	9.27%
Dec-22	41.06	341	0.70%	10357	21.34%	15317	31.56%	11162	23.00%	6854	14.12%	4504	9.28%
Jan-23	41.09	329	0.68%	10334	21.24%	15398	31.65%	11200	23.02%	6874	14.13%	4547	9.35%
Feb-23	41.12	318	0.65%	10336	21.16%	15466	31.66%	11291	23.12%	6878	14.08%	4598	9.41%
Mar-23	41.11	318	0.65%	10390	21.13%	15556	31.64%	11379	23.14%	6927	14.09%	4599	9.35%
Apr-23	41.14	308	0.63%	10382	21.12%	15558	31.64%	11388	23.16%	6930	14.09%	4607	9.37%
May-23	41.17	314	0.64%	10337	21.11%	15560	31.78%	11363	23.21%	6923	14.14%	4622	9.44%
Jun-23	41.2	315	0.64%	10310	20.94%	15624	31.74%	11394	23.15%	6942	14.10%	4644	9.43%
Jul-23	41.23	321	0.65%	10321	20.90%	15695	31.78%	11506	23.30%	6979	14.13%	4680	9.48%
Aug-23	41.29	307	0.62%	10276	20.78%	15634	31.61%	11541	23.33%	6979	14.11%	4726	9.56%
Sep-23	41.31	317	0.64%	10291	20.74%	15652	31.54%	11605	23.38%	7005	14.11%	4762	9.60%
Oct-23	41.32	334	0.67%	10303	20.62%	15763	31.55%	11733	23.49%	7054	14.12%	4810	9.63%
Nov-23	41.34	335	0.66%	10395	20.62%	15862	31.46%	11863	23.53%	7121	14.12%	4846	9.61%
Dec-23	41.38	344	0.68%	10358	20.53%	15840	31.40%	11908	23.60%	7152	14.18%	4848	9.61%
Jan-24	41.4	349	0.69%	10341	20.49%	15917	31.53%	11920	23.61%	7183	14.23%	4869	9.65%
Feb-24	41.44	344	0.68%	10289	20.35%	15890	31.43%	11948	23.63%	7195	14.23%	4895	9.68%
Mar-24	41.46	351	0.69%	10300	20.31%	15911	31.37%	11996	23.65%	7232	14.26%	4933	9.73%
Apr-24	41.49	368	0.72%	10337	20.27%	15969	31.31%	12114	23.75%	7274	14.26%	4979	9.76%
May-24	41.52	380	0.74%	10332	20.18%	16006	31.27%	12137	23.71%	7307	14.27%	5028	9.82%
Jun-24	41.55	393	0.77%	10319	20.14%	16020	31.26%	12144	23.70%	7284	14.21%	5083	9.92%
Jul-24	41.58	391	0.76%	10302	20.10%	16045	31.30%	12225	23.85%	7292	14.23%	5131	10.01%
Aug-24	41.61	376	0.73%	10233	19.96%	16026	31.26%	12226	23.84%	7274	14.19%	5136	10.02%

## All housed offenders under GDC jurisdiction

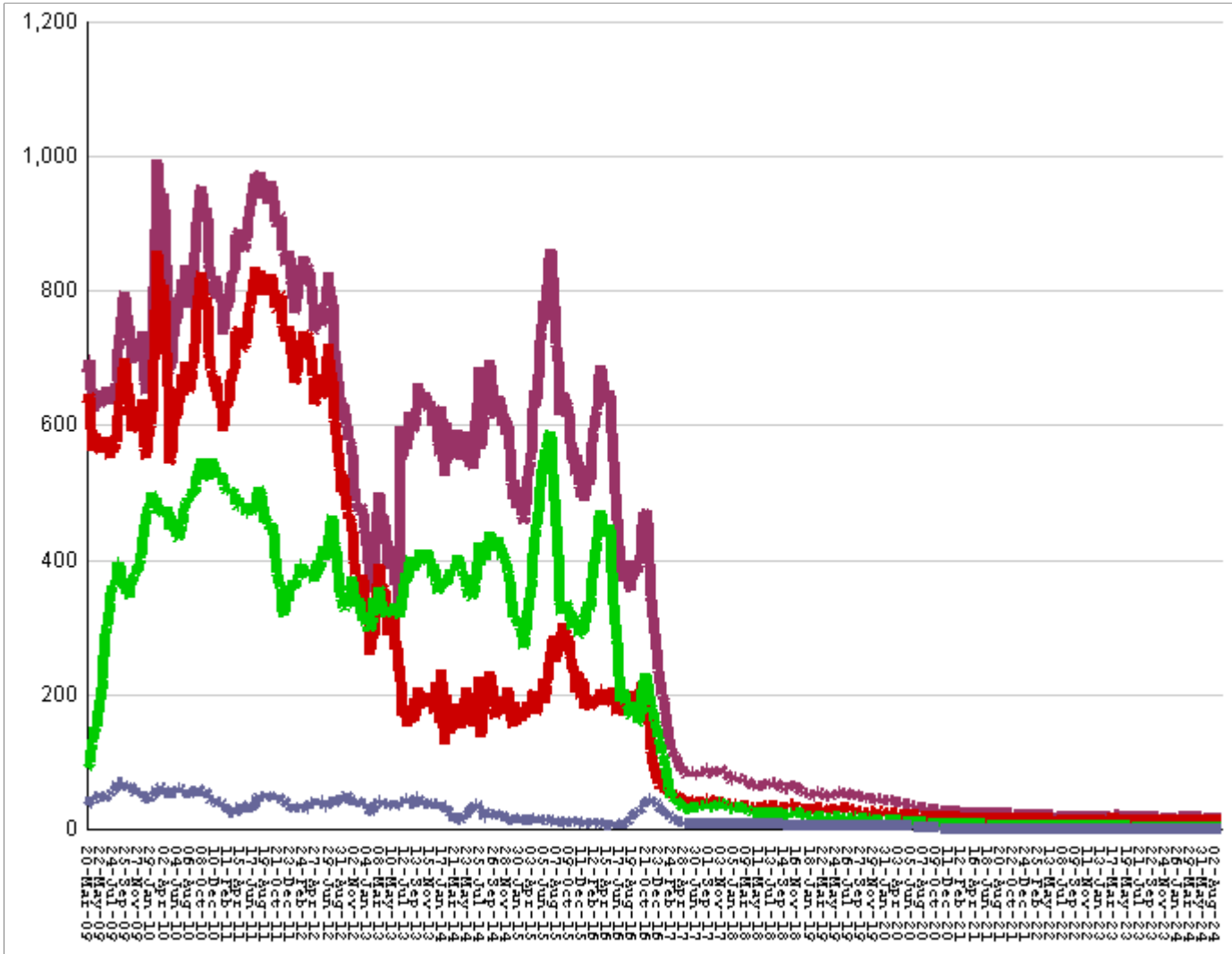
March 20, 2009 through September 06, 2024



<b>All in bed + probs in jail + backlog</b>	<b>fall by</b>	<b>126</b>	<b>from</b>	<b>53,548</b>	<b>to</b>	<b>53,422</b>
<b>Probationers in jail</b>	....	....	...	17	at	17
<b>Inmate jail backlog</b>	<b>falls by</b>	<b>49</b>	<b>from</b>	<b>598</b>	<b>to</b>	<b>549</b>
<b>All in beds: inmate + Prob + parole</b>	<b>fall by</b>	<b>77</b>	<b>from</b>	<b>52,933</b>	<b>to</b>	<b>52,856</b>
<b>Total probationers in beds</b>	<b>RISE BY</b>	<b>25</b>	<b>from</b>	<b>2,883</b>	<b>to</b>	<b>2,908</b>
<b>Probation detention centers</b>	<b>RISE BY</b>	<b>39</b>	<b>from</b>	<b>1,417</b>	<b>to</b>	<b>1,456</b>
<b>Probation boot camps</b>	<b>fall by</b>		<b>from</b>		<b>to</b>	
<b>Probation RSAT</b>	<b>fall by</b>	<b>14</b>	<b>from</b>	<b>1466</b>	<b>to</b>	<b>1,452</b>
<b>Parole revocation centers</b>	<b>fall by</b>		<b>from</b>		<b>to</b>	
<b>All in inmate beds: state + other</b>	<b>fall by</b>	<b>102</b>	<b>from</b>	<b>50,050</b>	<b>to</b>	<b>49,948</b>
<b>Other inmate facilities :</b>	<b>fall by</b>	<b>54</b>	<b>from</b>	<b>14,807</b>	<b>to</b>	<b>14,753</b>
<b>Inmate boot camps</b>	...	...	...	1	at	1
<b>Private prisons</b>	...	...	...	level	at	7,528
<b>County prisons</b>	<b>fall by</b>	<b>9</b>	<b>from</b>	<b>4517</b>	<b>to</b>	<b>4,508</b>
<b>Transitional centers</b>	<b>fall by</b>	<b>45</b>	<b>from</b>	<b>2761</b>	<b>to</b>	<b>2,716</b>
<b>In state prisons only</b>	<b>fall by</b>	<b>48</b>	<b>from</b>	<b>35,243</b>	<b>to</b>	<b>35,195</b>

# Probationers in jail awaiting placement in facilities

March 20, 2009 through September 06, 2024



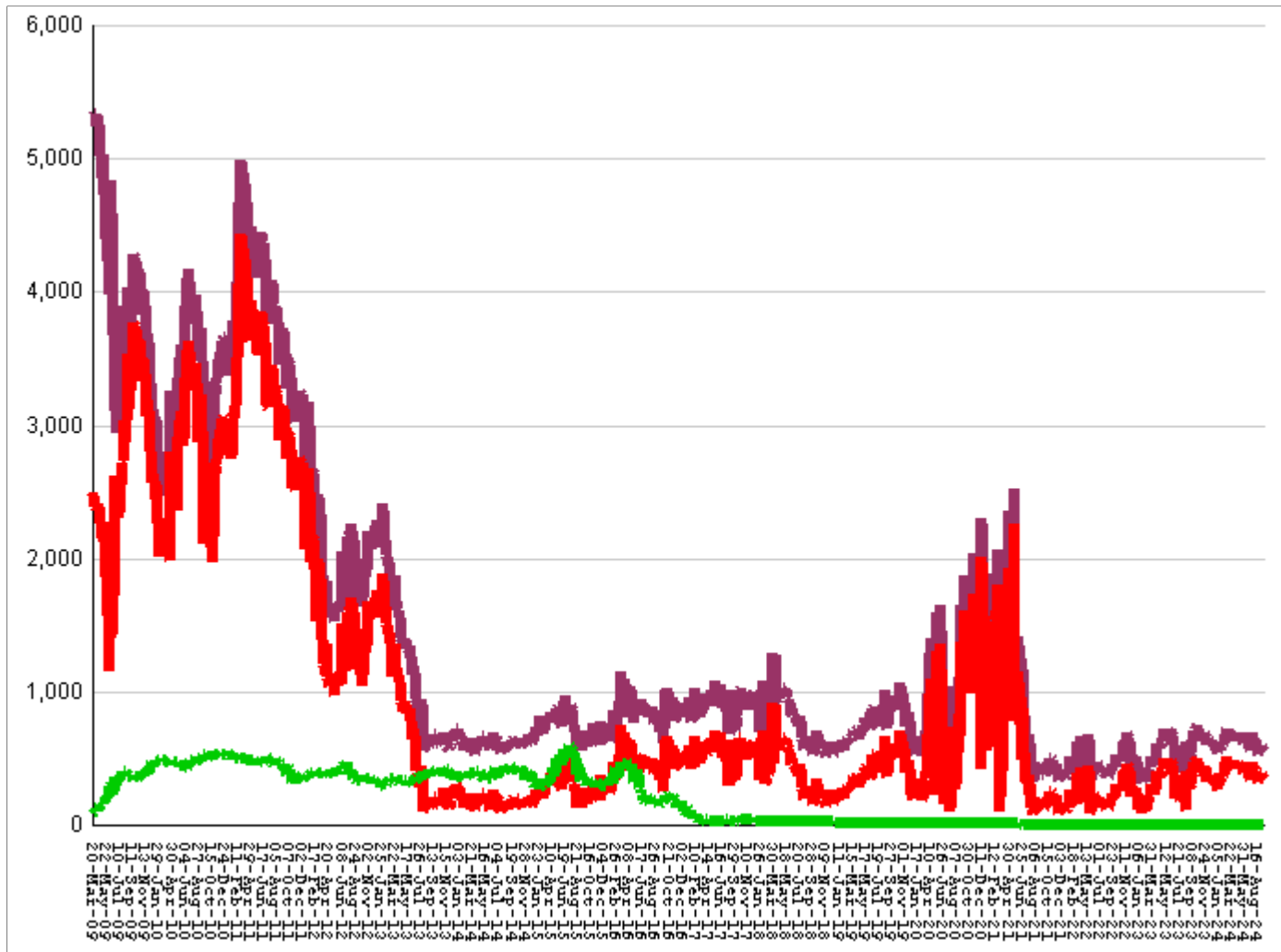
This graph shows, for each Friday since March 20 2009, the number of sentenced felony probationers who were waiting in jail for placement in facilities that GDC operates for housing probationers -- detention centers, probation residential substance abuse treatment (RSAT) centers, and probation boot camps. Counts include both those offenders sentenced directly from court, and those whose street probation was revoked.

<b>Total probationers waiting in jail</b>	...	...	...	<b>level</b>	<b>at</b>	<b>17</b>
<b>... waiting for detention centers</b>	...	...	...	<b>level</b>	<b>at</b>	<b>13</b>
<b>... waiting for probation RSAT</b>	...	...	...	<b>level</b>	<b>at</b>	<b>3</b>
<b>... waiting for probation boot camps</b>	...	...	...	<b>level</b>	<b>at</b>	<b>1</b>

<b>The highest number of probationers waiting in jail was</b>	<b>994</b>	<b>on</b>	<b>05-MAR-10</b>
<b>... highest number waiting for detention centers was</b>	<b>859</b>	<b>on</b>	<b>05-MAR-10</b>
<b>... highest number waiting for probation RSAT was</b>	<b>592</b>	<b>on</b>	<b>10-JUL-15</b>
<b>... highest number waiting for probation boot camps was</b>	<b>70</b>	<b>on</b>	<b>18-SEP-09</b>

# State inmates in jail awaiting placement in facilities

March 20, 2009 through September 06, 2024

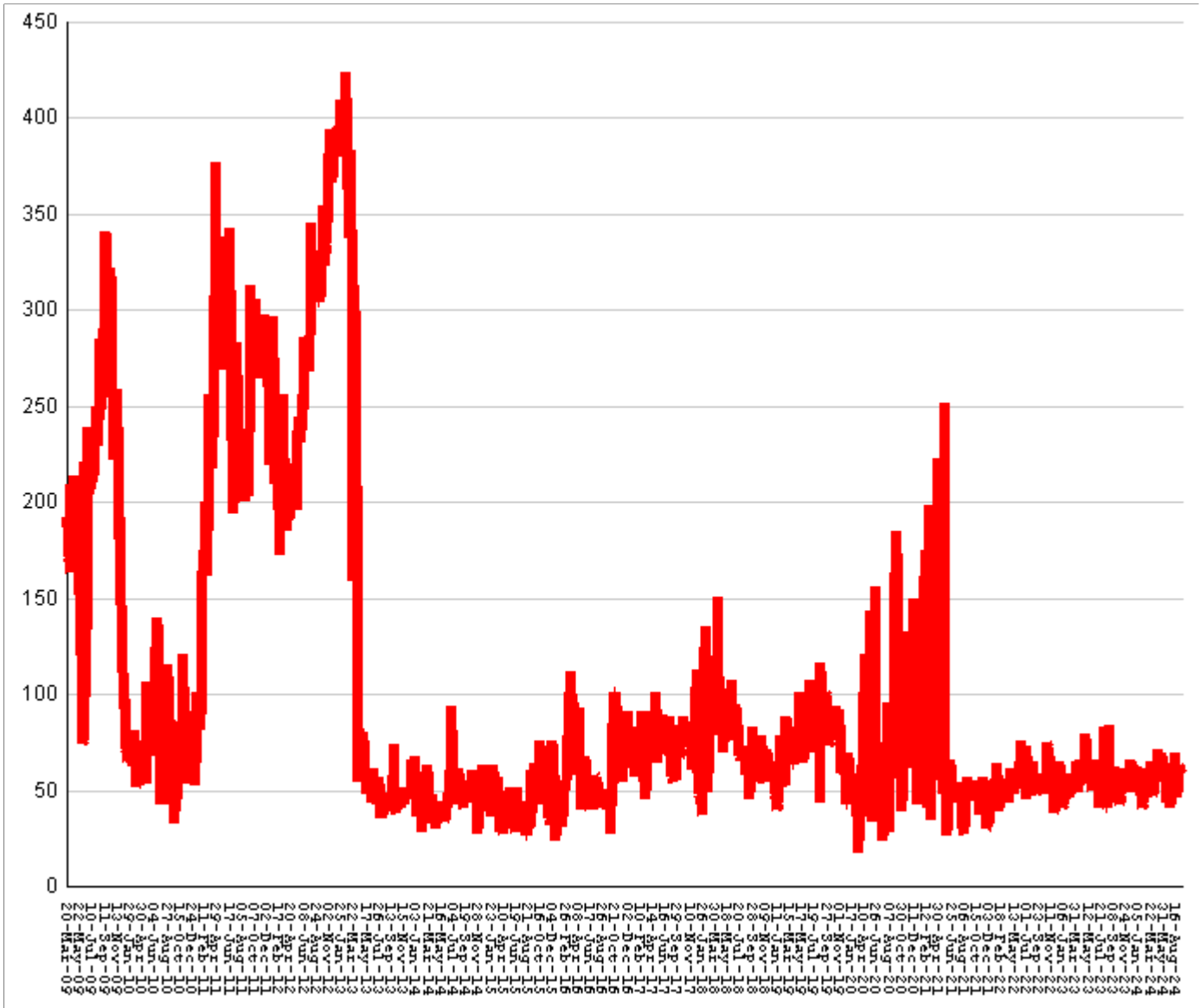


This graph shows, for each Friday since March 2009, the number of prisoners, probationers, and parolees in local jails who have been sentenced or revoked to state prison and whose documents have been received and verified by GDC. Most are almost immediately assigned to a diagnostic center, and are designated as in "admission processing". Of those a few hundred may be in the "transportation delayed" category because there is no room in the assigned diagnostic center, or because the inmate is being held for medical reasons, or for other court proceedings, or other reasons. Those remaining are "ready to be picked up".

<b>Total state inmates waiting in jail</b>	<b>fall by</b>	<b>49</b>	<b>from</b>	<b>598</b>	<b>to</b>	<b>549</b>
... not yet assigned to a diagnostic center	...	...	...	level	at	25
... total "in admission processing"	<b>fall by</b>	<b>49</b>	<b>from</b>	<b>573</b>	<b>to</b>	<b>524</b>
... with "transportation delayed"	<b>fall by</b>	<b>4</b>	<b>from</b>	<b>186</b>	<b>to</b>	<b>182</b>
... ready to be picked up	<b>fall by</b>	<b>45</b>	<b>from</b>	<b>387</b>	<b>to</b>	<b>342</b>

<b>The highest number of state inmates waiting in jail was</b>	<b>5338</b>	<b>on</b>	<b>27-MAR-09</b>
... highest number not asg to a diagnostic center was	<b>2881</b>	<b>on</b>	<b>12-JUN-09</b>
... highest number in admission processing was	<b>4916</b>	<b>on</b>	<b>25-MAR-11</b>
... highest number with transportation delayed was	<b>645</b>	<b>on</b>	<b>14-JAN-11</b>
... highest number ready to be pickup was	<b>4435</b>	<b>on</b>	<b>25-MAR-11</b>

## Female state inmates in jail awaiting pickup March 20, 2009 through September 06, 2024



This graph shows, for each Friday since March 2009, the number of female state prisoners in local jails who were assigned to diagnostic centers but had not yet been picked up.

**Female state inmates in jails waiting picked up**    **fall by**    **4**    **from**    **63**    **to**    **59**

**The highest number of female inmates waiting in jail was**    **424**    **on**    **01-FEB-13**

**The lowest number of female inmates waiting in jail was**    **17**    **on**    **20-MAR-20**



## Summary of housed prisoners, parolees, and probationers

Week ending	Prison	Parole	Probation			Prison+parole+probation	Jail		Total
	Total inmates	Revocation centers	Prob RSAT	Boot camp	Detention		Inmate backlog	Probationers	Prison+parole+probation+jail
15-Sep-2023	48208		1297		1224	50729	507	18	51254
22-Sep-2023	48259		1312		1203	50774	565	18	51357
29-Sep-2023	48412		1327		1161	50900	627	18	51545
06-Oct-2023	48407		1305		1203	50915	704	18	51637
13-Oct-2023	48543		1313		1221	51077	642	18	51737
20-Oct-2023	48597		1312		1232	51141	725	18	51884
27-Oct-2023	48698		1328		1235	51261	742	18	52021
03-Nov-2023	48781		1298		1265	51344	688	18	52050
10-Nov-2023	48909		1389		1244	51542	662	17	52221
17-Nov-2023	49061		1357		1274	51692	645	17	52354
24-Nov-2023	49087		1424		1262	51773	694	17	52484
01-Dec-2023	49237		1401		1265	51903	621	17	52541
08-Dec-2023	49227		1387		1266	51880	593	17	52490
15-Dec-2023	49240		1410		1263	51913	631	17	52561
22-Dec-2023	49353		1411		1276	52040	634	17	52691
29-Dec-2023	49410		1374		1227	52011	652	17	52680
05-Jan-2024	49392		1405		1237	52034	534	17	52585
12-Jan-2024	49307		1402		1219	51928	567	17	52512
19-Jan-2024	49259		1398		1255	51912	604	17	52533
26-Jan-2024	49243		1425		1273	51941	603	17	52561
02-Feb-2024	49176		1411		1327	51914	614	18	52546
09-Feb-2024	49108		1408		1335	51851	577	18	52446
16-Feb-2024	49160		1406		1343	51909	598	18	52525
23-Feb-2024	49131		1423		1346	51900	620	18	52538
01-Mar-2024	49200		1449		1358	52007	643	18	52668
08-Mar-2024	49218		1430		1400	52048	673	18	52739
15-Mar-2024	49255		1435		1412	52102	702	18	52822
22-Mar-2024	49304		1417		1404	52125	675	18	52818
29-Mar-2024	49434		1459		1392	52285	722	18	53025
05-Apr-2024	49389		1507		1409	52305	680	18	53003
12-Apr-2024	49458		1454		1406	52318	666	18	53002
19-Apr-2024	49474		1455		1417	52346	692	18	53056
26-Apr-2024	49533		1477		1436	52446	639	18	53103
03-May-2024	49550		1512		1421	52483	660	18	53161
10-May-2024	49492		1504		1422	52418	643	18	53079
17-May-2024	49615		1451		1410	52476	645	18	53139
24-May-2024	49652		1443		1453	52548	688	18	53254
31-May-2024	49785		1467		1444	52696	612	18	53326
07-Jun-2024	49769		1491		1410	52670	608	17	53295
14-Jun-2024	49784		1492		1419	52695	631	17	53343
21-Jun-2024	49907		1472		1410	52789	643	17	53449
28-Jun-2024	49944		1476		1369	52789	687	17	53493
05-Jul-2024	49897		1493		1369	52759	690	16	53465
12-Jul-2024	50027		1472		1392	52891	549	17	53457
19-Jul-2024	50007		1496		1418	52921	588	17	53526
26-Jul-2024	49939		1433		1447	52819	631	17	53467
02-Aug-2024	49931		1424		1438	52793	598	17	53408
09-Aug-2024	49870		1418		1417	52705	526	17	53248
16-Aug-2024	49881		1429		1400	52710	609	17	53336
23-Aug-2024	49950		1453		1388	52791	598	17	53406
30-Aug-2024	50050		1466		1417	52933	598	17	53548
06-Sep-2024	49948		1452		1456	52856	549	17	53422

## Offenders housed in facilities for state prisoners

Week ending	In state prisons	In facilities other than state prisons						Total Inmates
		Transition centers	County prisons	Pre-rel centers	Private prisons	Inmate boot camps	Total others	
15-Sep-2023	34290	2191	4484		7243	0	13918	48208
22-Sep-2023	34364	2207	4420		7268	0	13895	48259
29-Sep-2023	34465	2210	4360		7377	0	13947	48412
06-Oct-2023	34422	2203	4338		7444	0	13985	48407
13-Oct-2023	34465	2209	4339		7530	0	14078	48543
20-Oct-2023	34460	2198	4366		7573	0	14137	48597
27-Oct-2023	34493	2204	4406		7595	0	14205	48698
03-Nov-2023	34562	2208	4404		7607	0	14219	48781
10-Nov-2023	34700	2202	4415		7592	0	14209	48909
17-Nov-2023	34818	2207	4431		7605	0	14243	49061
24-Nov-2023	34833	2191	4450		7613	0	14254	49087
01-Dec-2023	34916	2209	4494		7617	1	14321	49237
08-Dec-2023	34883	2216	4485		7642	1	14344	49227
15-Dec-2023	34920	2206	4503		7610	1	14320	49240
22-Dec-2023	34948	2235	4522		7647	1	14405	49353
29-Dec-2023	34970	2234	4530		7676	0	14440	49410
05-Jan-2024	34991	2232	4509		7660	0	14401	49392
12-Jan-2024	34944	2226	4532		7605	0	14363	49307
19-Jan-2024	34914	2219	4528		7598	0	14345	49259
26-Jan-2024	34920	2233	4519		7571	0	14323	49243
02-Feb-2024	34889	2224	4509		7554	0	14287	49176
09-Feb-2024	34842	2208	4485		7573	0	14266	49108
16-Feb-2024	34875	2205	4508		7572	0	14285	49160
23-Feb-2024	34855	2215	4481		7580	0	14276	49131
01-Mar-2024	34885	2227	4497		7591	0	14315	49200
08-Mar-2024	34943	2226	4457		7592	0	14275	49218
15-Mar-2024	34936	2264	4446		7609	0	14319	49255
22-Mar-2024	34924	2323	4463		7594	0	14380	49304
29-Mar-2024	34993	2389	4450		7602	0	14441	49434
05-Apr-2024	34968	2415	4435		7571	0	14421	49389
12-Apr-2024	34979	2429	4473		7577	0	14479	49458
19-Apr-2024	34957	2461	4467		7589	0	14517	49474
26-Apr-2024	35020	2512	4410		7591	0	14513	49533
03-May-2024	35061	2528	4395		7566	0	14489	49550
10-May-2024	35022	2558	4364		7548	0	14470	49492
17-May-2024	35118	2584	4358		7555	0	14497	49615
24-May-2024	35109	2638	4355		7550	0	14543	49652
31-May-2024	35123	2674	4440		7548	0	14662	49785
07-Jun-2024	35023	2682	4494		7570	0	14746	49769
14-Jun-2024	34995	2718	4500		7571	0	14789	49784
21-Jun-2024	35048	2737	4524		7598	0	14859	49907
28-Jun-2024	35076	2740	4540		7588	0	14868	49944
05-Jul-2024	35064	2729	4531		7573	0	14833	49897
12-Jul-2024	35172	2754	4521		7580	0	14855	50027
19-Jul-2024	35164	2754	4505		7584	0	14843	50007
26-Jul-2024	35139	2751	4478		7571	0	14800	49939
02-Aug-2024	35134	2752	4502		7543	0	14797	49931
09-Aug-2024	35109	2749	4482		7529	1	14761	49870
16-Aug-2024	35109	2747	4489		7535	1	14772	49881
23-Aug-2024	35149	2756	4507		7537	1	14801	49950
30-Aug-2024	35243	2761	4517		7528	1	14807	50050
06-Sep-2024	35195	2716	4508		7528	1	14753	49948

## Offenders waiting in local jails for state facilities

Week ending	Probationers waiting in jail				State prisoners waiting in jail					Assigned females
	.. for PDCs	.. for RSAT	.. for boot camps	Total	Total backlog	Not yet assigned	In adm process	Delayed transport	Ready for pickup	
15-Sep-2023	14	3	1	18	507	27	480	206	274	51
22-Sep-2023	14	3	1	18	565	26	539	205	334	64
29-Sep-2023	14	3	1	18	627	26	601	203	398	84
06-Oct-2023	14	3	1	18	704	26	678	211	467	55
13-Oct-2023	14	3	1	18	642	28	614	213	401	42
20-Oct-2023	14	3	1	18	725	31	694	214	480	58
27-Oct-2023	14	3	1	18	742	31	711	214	497	51
03-Nov-2023	14	3	1	18	688	33	655	221	434	48
10-Nov-2023	13	3	1	17	662	32	630	225	405	60
17-Nov-2023	13	3	1	17	645	34	611	223	388	61
24-Nov-2023	13	3	1	17	694	33	661	221	440	53
01-Dec-2023	13	3	1	17	621	37	584	233	351	49
08-Dec-2023	13	3	1	17	593	41	552	231	321	53
15-Dec-2023	13	3	1	17	631	40	591	237	354	65
22-Dec-2023	13	3	1	17	634	40	594	241	353	66
29-Dec-2023	13	3	1	17	652	40	612	243	369	60
05-Jan-2024	13	3	1	17	534	40	494	236	258	53
12-Jan-2024	13	3	1	17	567	39	528	225	303	62
19-Jan-2024	13	3	1	17	604	36	568	215	353	59
26-Jan-2024	13	3	1	17	603	37	566	205	361	52
02-Feb-2024	14	3	1	18	614	37	577	208	369	50
09-Feb-2024	14	3	1	18	577	37	540	197	343	41
16-Feb-2024	14	3	1	18	598	36	562	199	363	43
23-Feb-2024	14	3	1	18	620	35	585	196	389	53
01-Mar-2024	14	3	1	18	643	40	603	188	415	54
08-Mar-2024	14	3	1	18	673	37	636	185	451	57
15-Mar-2024	14	3	1	18	702	37	665	188	477	52
22-Mar-2024	14	3	1	18	675	37	638	195	443	65
29-Mar-2024	14	3	1	18	722	23	699	192	507	61
05-Apr-2024	14	3	1	18	680	23	657	190	467	49
12-Apr-2024	14	3	1	18	666	22	644	187	457	47
19-Apr-2024	14	3	1	18	692	25	667	185	482	53
26-Apr-2024	14	3	1	18	639	26	613	189	424	58
03-May-2024	14	3	1	18	660	24	636	193	443	69
10-May-2024	14	3	1	18	643	23	620	193	427	71
17-May-2024	14	3	1	18	645	23	622	196	426	57
24-May-2024	14	3	1	18	688	24	664	191	473	67
31-May-2024	14	3	1	18	612	25	587	195	392	63
07-Jun-2024	13	3	1	17	608	25	583	193	390	57
14-Jun-2024	13	3	1	17	631	24	607	188	419	43
21-Jun-2024	13	3	1	17	643	24	619	187	432	58
28-Jun-2024	13	3	1	17	687	26	661	189	472	64
05-Jul-2024	12	3	1	16	690	27	663	193	470	50
12-Jul-2024	13	3	1	17	549	28	521	188	333	41
19-Jul-2024	13	3	1	17	588	28	560	180	380	50
26-Jul-2024	13	3	1	17	631	29	602	183	419	54
02-Aug-2024	13	3	1	17	598	27	571	181	390	59
09-Aug-2024	13	3	1	17	526	28	498	179	319	46
16-Aug-2024	13	3	1	17	609	24	585	184	401	69
23-Aug-2024	13	3	1	17	598	24	574	185	389	61
30-Aug-2024	13	3	1	17	598	25	573	186	387	63
06-Sep-2024	13	3	1	17	549	25	524	182	342	59