

# Friday Report – overview and contents

The pages in The Friday Report are about adult offenders in Georgia's prisons and jails. They contain statistical snapshots and trends in the populations and movements of offenders in the state prison system, on probation, on parole, and in local jails. Information comes from databases of the Georgia Department of Corrections (GDC) and the Board of Pardons and Paroles, and from data provided by local jailers. Information is summarized into tables in the GDC/Parole Data Warehouse, and is extracted into these pages each Friday. Pages are organized according to the table that supplied the data.

The Monthly Research Table, named "MO_RESRCH" or simply "MO", contains data about state prisoners, grouped into statistically interesting categories. The table contains one record per month, from January 2000 to the present. Despite its being "monthly", it is updated weekly, because some data trickles in for several weeks before it becomes stable history.	
Page	Contents
MO-01	Clemencies and maxouts. Monthly graph from 2000 to present shows the monthly departures from prison via actions by the Georgia Parole Board (clemencies), and via service of 100% of the court ordered sentence (maxouts)
MO-02	48 months of releases. Table shows counts and percentages of releases via clemencies and maxouts, with and without probation to follow, for each of the past 48 months.
MO-03	Methamphetamine. Monthly graph from 2000 to present shows admissions, departures, population, and percent of population of inmates with a current offense of methamphetamine possession, sale, manufacturing, or trafficking, and the changing racial composition of the methamphetamine population.
MO-04	Non-violent first incarcerants. Monthly graph from 2000 to present shows admissions, departures, population, and percent of population of inmates without violent or sex crimes, who are serving their first Georgia felony incarceration.
MO-05	Seven Deadly Sins. Monthly graph from 2000 to present shows admissions, departures, population, and percent of population of inmates convicted of kidnapping, armed robbery, rape, aggravated sodomy, aggravated sexual battery, and aggravated child molestation, for whom especially severe penalties are prescribed.
MO-06	48 months of inmate subpopulations. Table shows number and percentage of white and non-white inmates with methamphetamine offenses, and non-violent first incarcerants, and inmates convicted of the Seven Deadly Sins.
MO-07	Inmate age overview. Line graph shows the average age of the inmate population, by month from 2000 to the present. Pie chart shows the number of currently active inmates in their teens, twenties, thirties, forties, fifties, and age sixty+.
MO-08	Counts by age group. Graphs show the count, by month from 2000 to the present, of inmates in their teens, twenties, thirties, forties, fifties, and age sixty+.
MO-09	Percentages by age group. Graphs show the <i>percentages</i> , by month from 2000 to the present, of inmates in their teens, twenties, thirties, forties, fifties, and age sixty+.
MO-10	48 months of inmate ages. Table shows average age of the standing population, and counts and percentages of teens, twenties, thirties, forties, fifties, and sixty+, for each of the past 48 months.

# Friday Report – overview and contents (*continued*)

The MSR Table is based on the Management Summary Report (MSR), a snapshot report posted each week in GDC's Scribe database. MSR_RESRCH gathers that data into weekly trends, with one record for each Friday since March 20th, 2009.	
Page	Contents
MSR-01	All housed offenders. Weekly graph from March 20, 2009 to present, showing counts of inmates in state prisons, transitional centers, county prisons, private prisons, inmate boot camps, parole revocation centers, probation Residential Substance Abuse Treatment (RSAT), probation boot camps, probation detention centers, plus the inmate jail backlog and probationers in jail waiting for state facilities.
MSR-02	Probationers in jail. Weekly graph from March 20, 2009 to present, showing counts of probationers in local jails awaiting placement in probation detention centers, probation RSAT centers, and probation boot camps.
MSR-03	State inmates in jail. Weekly graph from March 20, 2009 to present, showing counts of state inmates in local jails awaiting placement in state prison facilities – including those who have not yet been assigned to a diagnostic center, those whose transportation has been delayed for some reason, and those who are ready to be picked up.
MSR-04	Female state inmates in jail. Weekly graph from March 20, 2009 to present, showing counts of female state inmates awaiting placement in a state prison for females.
MSR-05	52-week table: housed offenders. Data for each of the past 52 weeks, showing total prison inmates, parolees in revocation centers, probationers in RSAT/boot camp/detention centers, inmate jail backlog, probationers in jail waiting for facilities, with subtotals.
MSR-06	52-week table: state prisoners. Data for each of the past 52 weeks, showing inmates in state prisons, transition centers, county prisons, pre-release centers, private prisons, and inmate boot camps, with subtotals.
MSR-07	52-week table: waiting in jail. Data for each of the past 52 weeks, showing probationers waiting for detention centers, RSAT, and boot camp; and state prisoners not yet assigned to diagnostic centers, in admission process, with delayed transport, and ready for pickup, with subtotals.

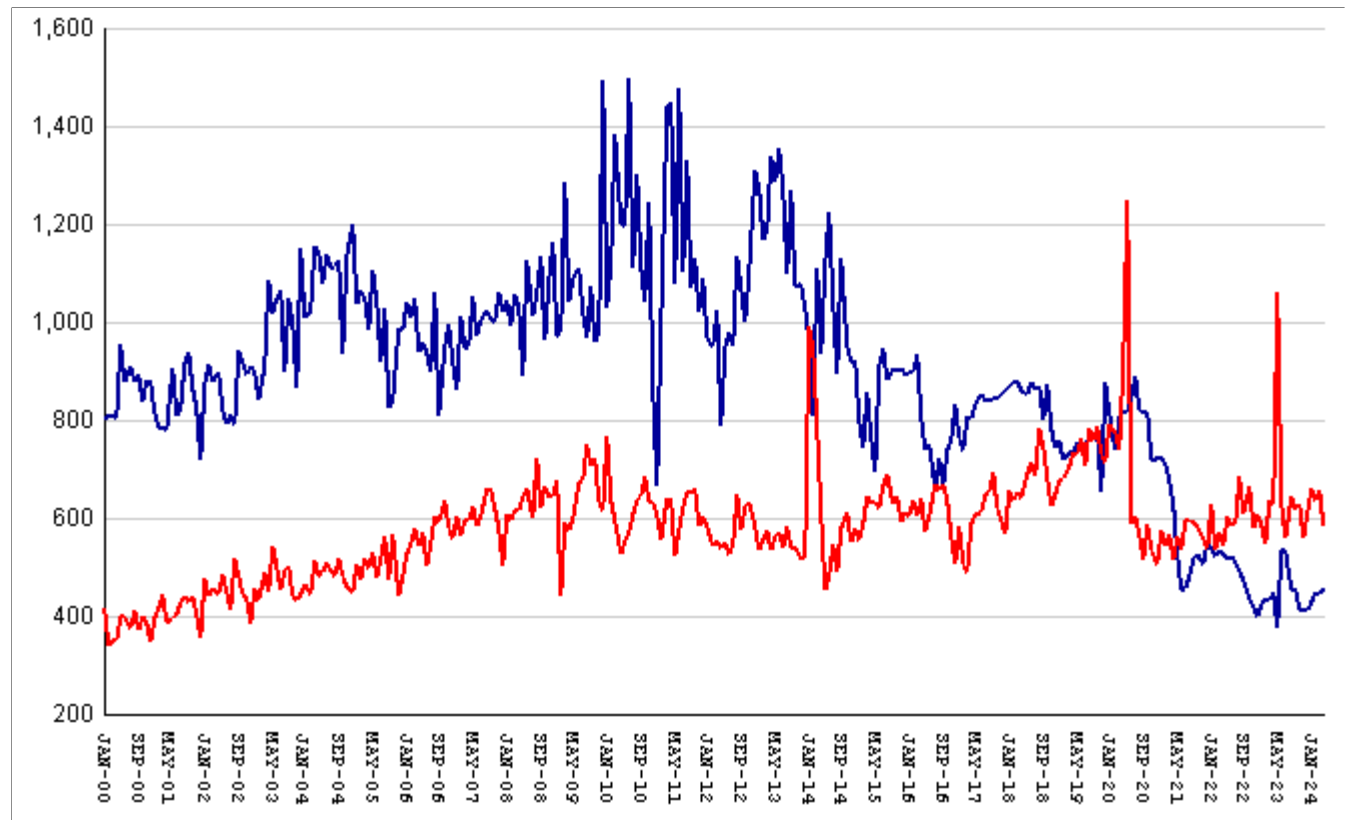
The DCA table consists mainly of data submitted from each of Georgia's 140+ local jails, via the Georgia Crime Information Center (GCIC) to the Georgia Department of Community Affairs (DCA), which publishes its [County Jail Inmate Population Report](#) on its web site each month. GDC has collected summary statewide data from this report every month since its inception in January, 1993. The table also contains the inmate jail backlog as computed by GDC for the last Friday of each month, for comparison with the jailers' count of state inmates. Although nominally a monthly table, DCA\_RESRCH is updated weekly to insure that the DCA data is correctly synchronized with the GDC jail backlog data.

Page	Contents
DCA-01	Jail composition. Monthly graph from 1993 to the present shows trends in the numbers of unsentenced inmates, state inmates, county inmates, and other inmates.
DCA-02	Two views of jail backlog. Monthly graph from 1993 to present compares jailers' count of "state inmates" with GDC's count of the "inmate jail backlog", and explains that both are valid counts of different phenomena.
DCA-03	48-month table: local jails. Data from Georgia jailers for each of the past 48 months, showing total jail population, capacity, utilization, and number and percent of unsentenced inmates, state inmates, county inmates, and other inmates.

## Releases by clemency and maxout, Jan-2000 to Apr-2024

There are two main ways of being released from a Georgia prison -- by actions of the Board of Pardons and Paroles ("Clemencies") and by service of 100% of the court-ordered sentences ("Maxouts"). "Clemency" includes paroles, reprieves, commutations, and transfer to other confinement prior to expiration of sentence.

"Other Releases" includes deaths, and sentences modified or overturned by the courts. Clemencies and maxouts may or may not be followed by periods of probation.



A. Clemency with probation to follow	RISES BY	31	from	382	to	413
B. Clemency only	falls by	18	from	63	to	45
C. Maxout with probation to follow	falls by	66	from	593	to	527
D. Maxout only (unsupervised)	falls by	5	from	63	to	58
E. Other releases	RISES BY	13	from	20	to	33
F. Total releases (A+B+C+D+E)	falls by	45	from	1121	to	1076
<b>G. Total clemencies (A+B) (top line)</b>	<b>RISES BY</b>	<b>13</b>	<b>from</b>	<b>445</b>	<b>to</b>	<b>458</b>
<b>H. Total maxouts(C+D) (bottom line)</b>	<b>falls by</b>	<b>71</b>	<b>from</b>	<b>656</b>	<b>to</b>	<b>585</b>
I. % of releases by clemency (G/F)	RISES BY	2.87%	from	39.7%	to	42.57%
J. % of releases by maxout (H/F)	falls by	4.15%	from	58.52%	to	54.37%
K. Supervised releases (A+B+C)	falls by	53	from	1038	to	985
L. % unsupervised releases (D/F)	falls by	.23%	from	5.62%	to	5.39%
M. % supervised releases (K/F)	falls by	1.06%	from	92.6%	to	91.54%

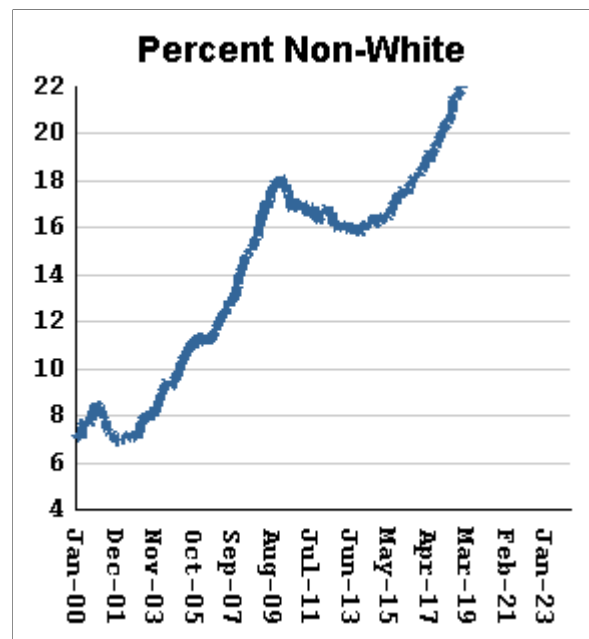
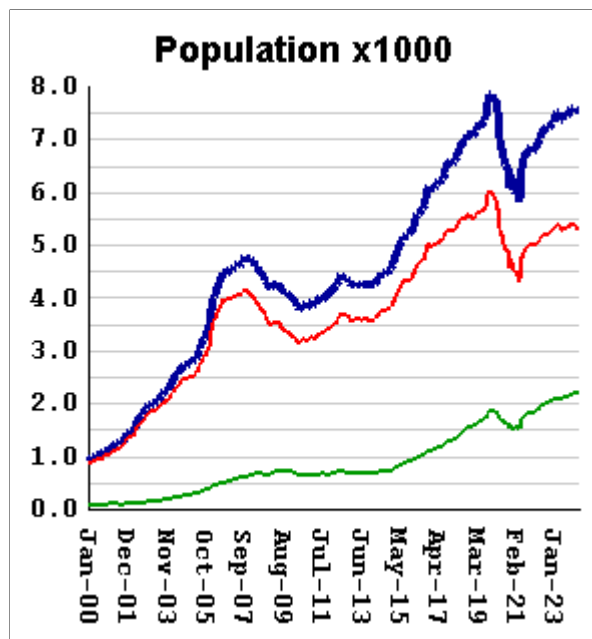
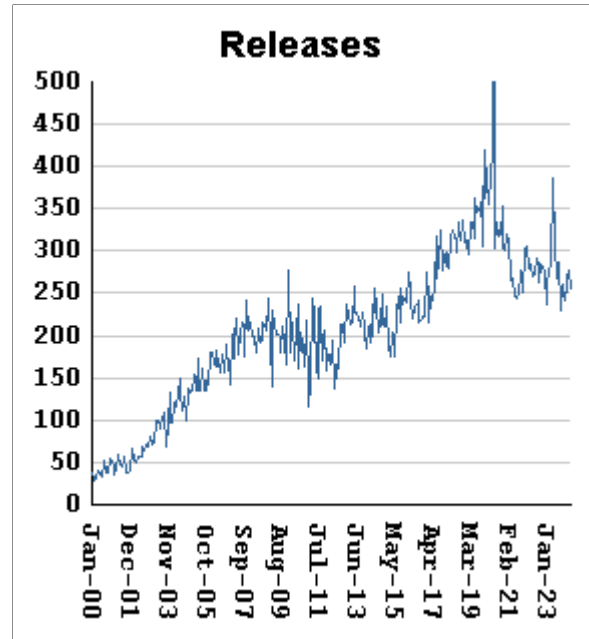
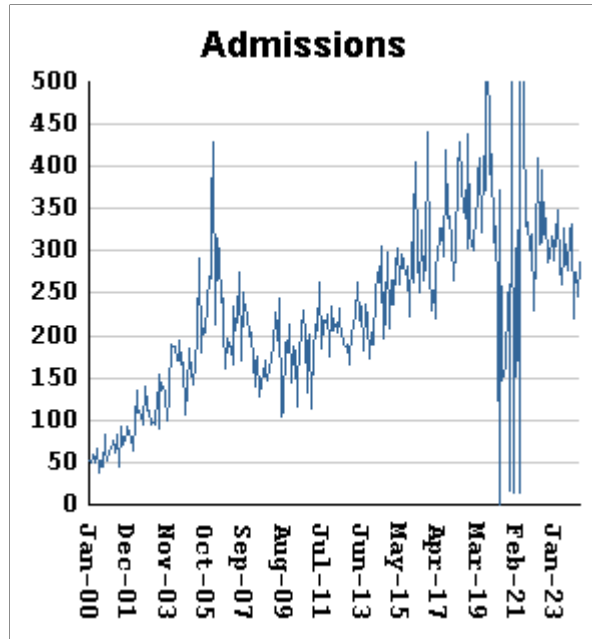
## Monthly releases from prison by type of release, for the past 48 months

Month	A	B	C	D	E	F	G	H	I	J
	Clemency + Prob	Clemency Only	Maxout + Prob	Maxout Only	Other Rels	Total Releases (A+B+C+D+E)	Total Clemency (A+B)	Total Maxout (C+D)	Percent Clemency (G/F)	Percent Maxout (H/F)
May-20	675	140	1093	155	28	2091	815	1248	38.98%	59.68%
Jun-20	717	127	534	54	15	1447	844	588	58.33%	40.64%
Jul-20	741	148	557	47	28	1521	889	604	58.45%	39.71%
Aug-20	676	145	514	55	34	1424	821	569	57.65%	39.96%
Sep-20	686	131	450	66	33	1366	817	516	59.81%	37.77%
Oct-20	694	122	516	70	29	1431	816	586	57.02%	40.95%
Nov-20	603	114	481	52	21	1271	717	533	56.41%	41.94%
Dec-20	623	100	446	60	18	1247	723	506	57.98%	40.58%
Jan-21	634	91	516	58	21	1320	725	574	54.92%	43.48%
Feb-21	615	97	480	63	20	1275	712	543	55.84%	42.59%
Mar-21	569	107	494	72	16	1258	676	566	53.74%	44.99%
Apr-21	531	98	455	61	24	1169	629	516	53.81%	44.14%
May-21	446	77	508	54	21	1106	523	562	47.29%	50.81%
Jun-21	366	86	468	67	21	1008	452	535	44.84%	53.08%
Jul-21	390	67	535	62	19	1073	457	597	42.59%	55.64%
Aug-21	411	70	533	62	28	1104	481	595	43.57%	53.89%
Sep-21	444	75	525	65	32	1141	519	590	45.49%	51.71%
Oct-21	448	77	526	56	21	1128	525	582	46.54%	51.60%
Nov-21	425	80	491	67	18	1081	505	558	46.72%	51.62%
Dec-21	469	82	482	57	18	1108	551	539	49.73%	48.65%
Jan-22	459	80	552	75	26	1192	539	627	45.22%	52.60%
Feb-22	445	79	465	71	24	1084	524	536	48.34%	49.45%
Mar-22	461	72	514	57	16	1120	533	571	47.59%	50.98%
Apr-22	458	70	472	69	16	1085	528	541	48.66%	49.86%
May-22	441	77	540	64	26	1148	518	604	45.12%	52.61%
Jun-22	460	61	529	57	21	1128	521	586	46.19%	51.95%
Jul-22	444	66	528	61	14	1113	510	589	45.82%	52.92%
Aug-22	426	66	618	66	21	1197	492	684	41.10%	57.14%
Sep-22	399	76	552	57	18	1102	475	609	43.10%	55.26%
Oct-22	376	59	606	61	23	1125	435	667	38.67%	59.29%
Nov-22	366	53	523	55	19	1016	419	578	41.24%	56.89%
Dec-22	345	57	552	57	28	1039	402	609	38.69%	58.61%
Jan-23	374	52	528	58	23	1035	426	586	41.16%	56.62%
Feb-23	391	44	497	49	17	998	435	546	43.59%	54.71%
Mar-23	378	54	575	61	24	1092	432	636	39.56%	58.24%
Apr-23	390	57	573	54	26	1100	447	627	40.64%	57.00%
May-23	329	45	936	126	20	1456	374	1062	25.69%	72.94%
Jun-23	462	71	570	57	19	1179	533	627	45.21%	53.18%
Jul-23	459	75	516	43	25	1118	534	559	47.76%	50.00%
Aug-23	405	49	591	54	22	1121	454	645	40.50%	57.54%
Sep-23	404	55	578	43	10	1090	459	621	42.11%	56.97%
Oct-23	364	50	578	51	31	1074	414	629	38.55%	58.57%
Nov-23	357	54	496	64	19	990	411	560	41.52%	56.57%
Dec-23	364	49	555	57	21	1046	413	612	39.48%	58.51%
Jan-24	370	59	602	60	32	1123	429	662	38.20%	58.95%
Feb-24	394	53	573	65	24	1109	447	638	40.31%	57.53%
Mar-24	382	63	593	63	20	1121	445	656	39.70%	58.52%
Apr-24	413	45	527	58	33	1076	458	585	42.57%	54.37%

## Inmates with meth crimes, by month, Jan-2000 to Apr-2024

Methamphetamine is one of the most addictive drugs ever known. At first it induces intense euphoria, but with continued use causes severe depression and physical deterioration, including the dental catastrophe known as "meth mouth".

Georgia's meth epidemic peaked in 2007-2008, then declined, but is again growing. It started in the predominantly white northern counties, with blacks accounting for only about 5% of convictions. But black usage has expanded, and now accounts for about 15% of convictions.



Methamphetamine admissions

RISE BY 40 from 246 to 286

Methamphetamine releases

fall by 22 from 278 to 256

Methamphetamine population

RISES BY 30 from 7532 to 7562

Meth white population

RISES BY 5 from 5324 to 5329

Meth non-white population

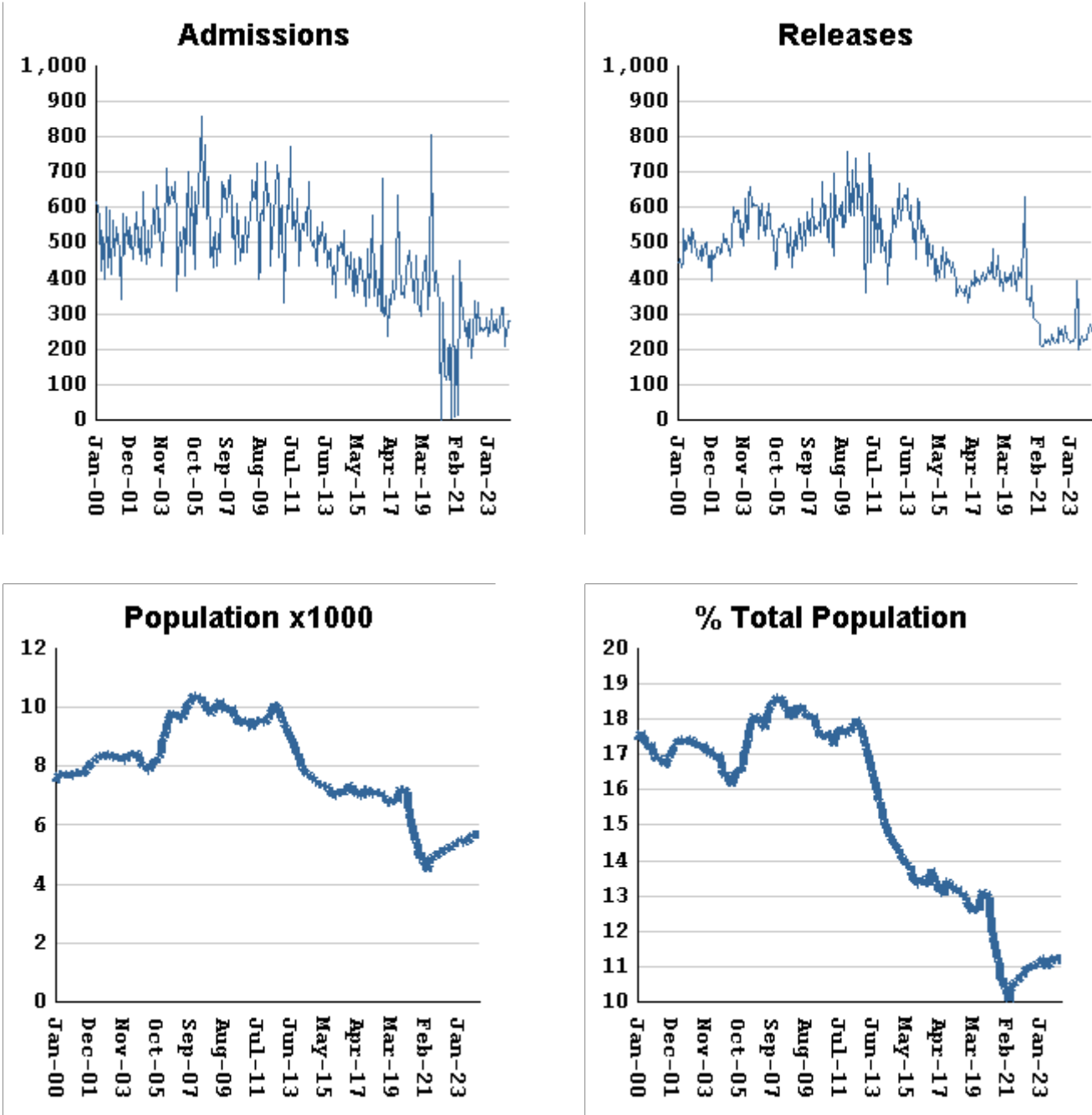
RISES BY 36 from 2208 to 2244

Percent meth inmates who are non-white

RISES BY .36 % from 29.31% to 29.67%

# Non-violent first-incarcerants, by month, Jan-2000 to Apr-2024

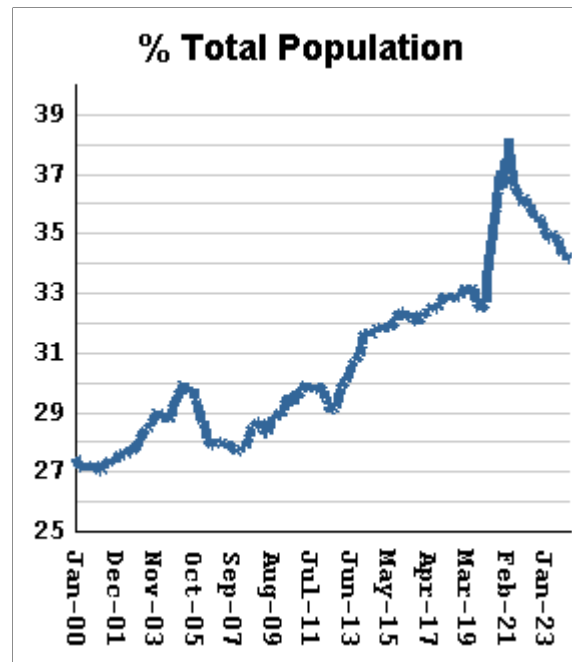
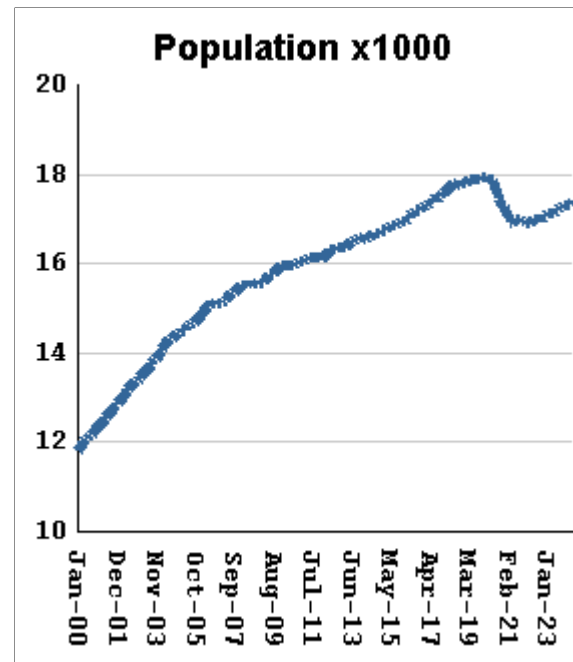
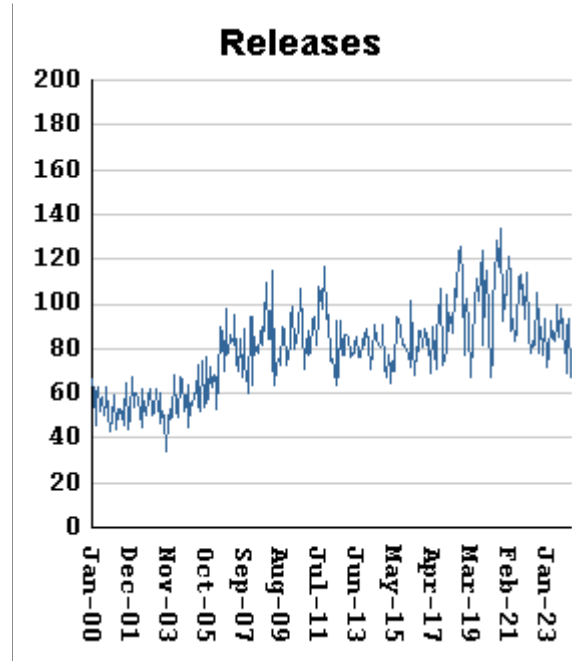
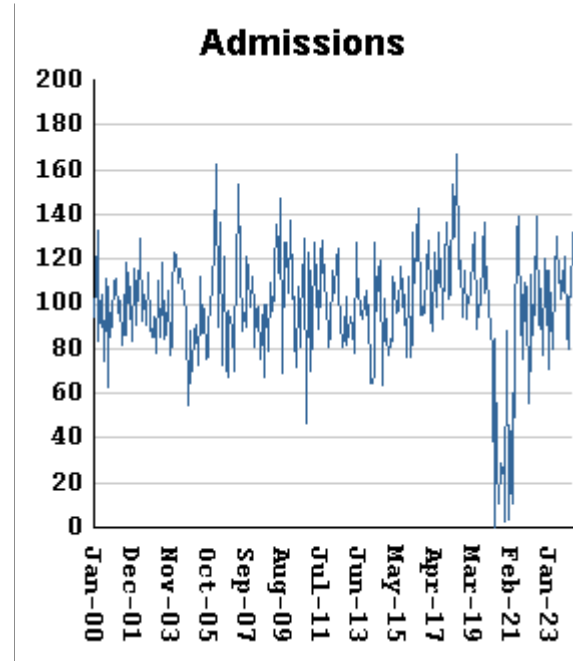
Historically, about one in six Georgia prison inmates has been a first-time incarcerant with a non-violent crime. In 2012 Georgia passed HB1176, which aimed to curb the growth of prison population by steering the least dangerous, least hardened offenders away from prison through pre-trial intervention, diversion, drug courts and treatment programs, and raising the dollar thresholds that define property felonies. The expectation is that over time, these measures will reduce the percentage of first-time non-violent incarcerants in prison.



Non-viol/1st-Incar admissions	fall by	0	...	281	at	281
Non-viol/1st-Incar releases	fall by	19	from	272	to	253
Non-viol/1st-Incar population	RISES BY	28	from	5671	to	5699
Non-viol/1st-Incar % of total population	falls by	.01 %	from	11.19%	to	11.18%

## "Seven Deadly Sins" by month, Jan-2000 to Apr-2024

Tough legislation in 1995 imposed mandatory ten-year minimum terms for kidnapping, armed robbery, rape, aggravated sodomy, aggravated sexual battery, and aggravated child molestation, and a minimum of 25 years for murder. A second conviction resulted in life without parole. As predicted, longer prison terms caused population to climb steeply for about a decade. It then began to level off, as releases started catching up with admissions. The 2008 dip in percentage of total population (bottom right) was caused by the surge of methamphetamine convictions (Page MO-03). Note: these graphs include inmates convicted before 1995.



"Seven Deadly Sin" admissions	RISE BY	29	from	103	to	132
"Seven Deadly Sin" releases	fall by	26	from	93	to	67
"Seven Deadly Sin" population	RISES BY	65	from	17332	to	17397
"Seven Deadly Sin" % of total population	falls by	.06 %	from	34.18%	to	34.12%

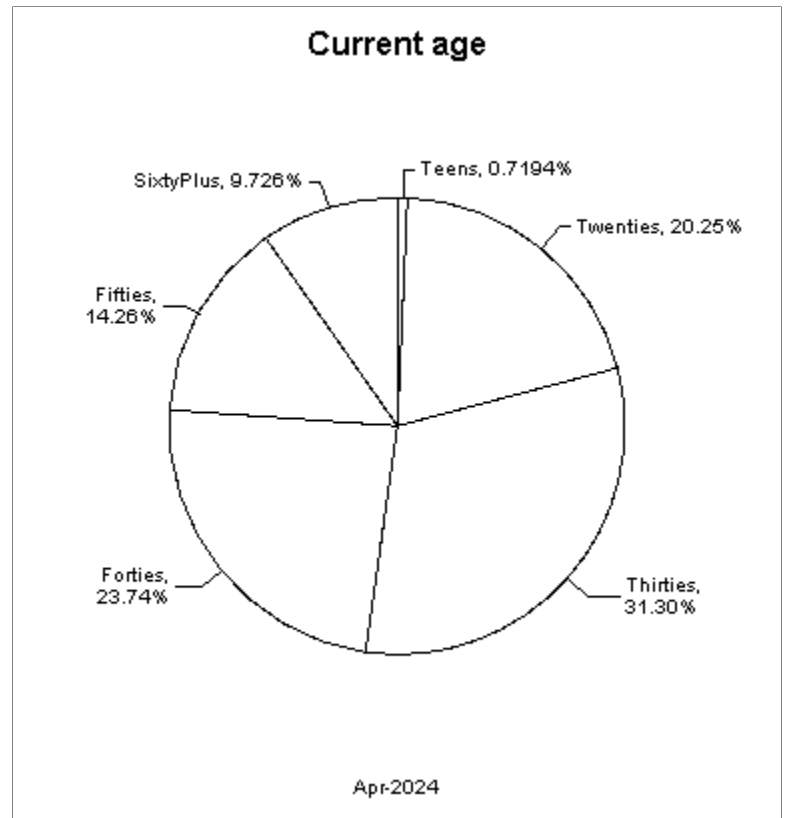
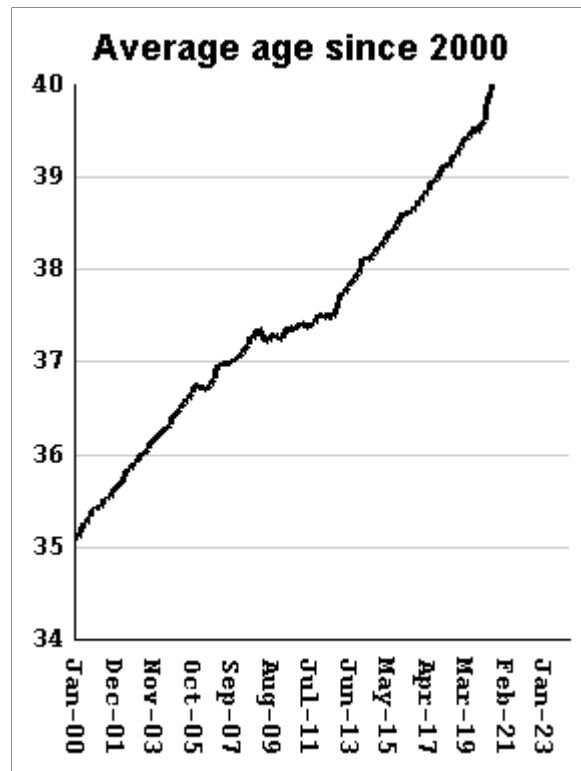
## Inmate subpopulation counts and percentages, for the past 48 months

Month	Methamphetamine						1st Incar Non-Violent		Seven Deadly Sins	
	Total Number	Total Percent	White Number	White Percent	Non White Number	Non White Percent	Number	Percent	Number	Percent
May-20	7024	13.57%	5309	75.58%	1721	24.50%	6138	11.86%	17826	34.45%
Jun-20	6866	13.51%	5249	76.45%	1703	24.80%	5917	11.64%	17744	34.91%
Jul-20	6685	13.44%	5032	75.27%	1659	24.82%	5686	11.43%	17627	35.43%
Aug-20	6534	13.35%	4908	75.11%	1631	24.96%	5484	11.20%	17539	35.83%
Sep-20	6460	13.37%	4921	76.18%	1613	24.97%	5365	11.10%	17430	36.07%
Oct-20	6367	13.35%	4788	75.20%	1584	24.88%	5199	10.90%	17360	36.41%
Nov-20	6081	13.08%	4550	74.82%	1535	25.24%	4915	10.57%	17253	37.12%
Dec-20	6332	13.41%	4729	74.68%	1607	25.38%	5038	10.67%	17243	36.53%
Jan-21	6028	13.13%	4502	74.68%	1530	25.38%	4769	10.38%	17138	37.32%
Feb-21	6002	13.21%	4497	74.93%	1559	25.97%	4685	10.31%	17044	37.51%
Mar-21	6062	13.36%	4485	73.99%	1581	26.08%	4634	10.21%	16994	37.44%
Apr-21	5805	13.09%	4287	73.85%	1522	26.22%	4432	10.00%	16917	38.16%
May-21	6143	13.61%	4584	74.62%	1625	26.45%	4676	10.36%	16911	37.46%
Jun-21	6406	13.96%	4731	73.85%	1712	26.72%	4796	10.45%	16960	36.95%
Jul-21	6625	14.25%	4871	73.52%	1758	26.54%	4882	10.50%	17010	36.59%
Aug-21	6701	14.37%	4927	73.53%	1787	26.67%	4917	10.54%	16984	36.41%
Sep-21	6766	14.47%	4967	73.41%	1803	26.65%	4950	10.58%	16981	36.31%
Oct-21	6790	14.51%	4986	73.43%	1808	26.63%	4949	10.58%	16943	36.21%
Nov-21	6853	14.61%	5039	73.53%	1827	26.66%	5003	10.67%	16947	36.13%
Dec-21	6869	14.60%	5045	73.45%	1828	26.61%	5043	10.72%	16961	36.06%
Jan-22	6794	14.55%	4997	73.55%	1829	26.92%	4992	10.69%	16903	36.21%
Feb-22	6818	14.59%	5022	73.66%	1851	27.15%	5010	10.72%	16900	36.17%
Mar-22	6941	14.73%	5059	72.89%	1886	27.17%	5117	10.86%	16927	35.93%
Apr-22	6965	14.76%	5074	72.85%	1895	27.21%	5162	10.94%	16935	35.89%
May-22	7008	14.83%	5100	72.77%	1929	27.53%	5145	10.89%	16956	35.89%
Jun-22	7128	14.95%	5171	72.54%	1963	27.54%	5239	10.99%	17013	35.68%
Jul-22	7157	14.97%	5180	72.38%	1981	27.68%	5233	10.95%	16999	35.56%
Aug-22	7211	15.08%	5233	72.57%	2003	27.78%	5270	11.02%	16997	35.54%
Sep-22	7233	15.10%	5210	72.03%	2026	28.01%	5255	10.97%	17026	35.54%
Oct-22	7242	15.11%	5237	72.31%	2032	28.06%	5283	11.03%	17013	35.51%
Nov-22	7277	15.10%	5285	72.63%	2032	27.92%	5315	11.03%	17056	35.38%
Dec-22	7315	15.08%	5283	72.22%	2035	27.82%	5380	11.09%	17072	35.19%
Jan-23	7367	15.15%	5317	72.17%	2067	28.06%	5400	11.10%	17071	35.10%
Feb-23	7429	15.21%	5348	71.99%	2098	28.24%	5429	11.12%	17113	35.04%
Mar-23	7497	15.25%	5395	71.96%	2105	28.08%	5520	11.23%	17130	34.85%
Apr-23	7495	15.25%	5402	72.07%	2096	27.97%	5528	11.25%	17118	34.82%
May-23	7368	15.05%	5316	72.15%	2079	28.22%	5395	11.02%	17148	35.03%
Jun-23	7364	14.96%	5287	71.80%	2080	28.25%	5388	10.95%	17195	34.94%
Jul-23	7423	15.03%	5345	72.01%	2117	28.52%	5440	11.02%	17212	34.86%
Aug-23	7439	15.04%	5314	71.43%	2127	28.59%	5466	11.05%	17230	34.84%
Sep-23	7429	14.97%	5306	71.42%	2124	28.59%	5503	11.09%	17247	34.76%
Oct-23	7523	15.06%	5372	71.41%	2161	28.73%	5595	11.20%	17258	34.55%
Nov-23	7595	15.07%	5414	71.28%	2182	28.73%	5682	11.27%	17290	34.30%
Dec-23	7573	15.02%	5397	71.27%	2177	28.75%	5661	11.22%	17299	34.30%
Jan-24	7560	14.98%	5385	71.23%	2198	29.07%	5681	11.26%	17288	34.26%
Feb-24	7564	14.96%	5366	70.94%	2198	29.06%	5662	11.20%	17322	34.27%
Mar-24	7532	14.86%	5324	70.69%	2208	29.31%	5671	11.19%	17332	34.18%
Apr-24	7562	14.83%	5329	70.47%	2244	29.67%	5699	11.18%	17397	34.12%



## Overview of inmate age statistics, Jan-2000 to Apr-2024

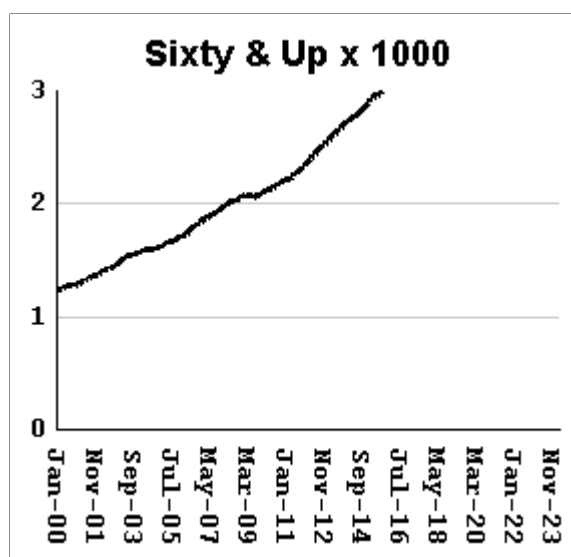
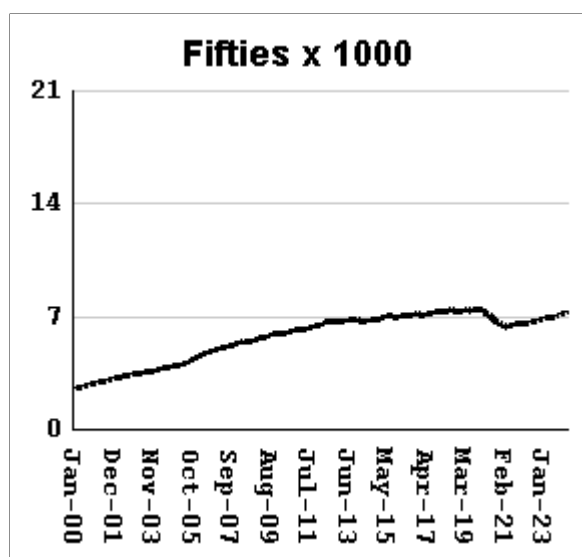
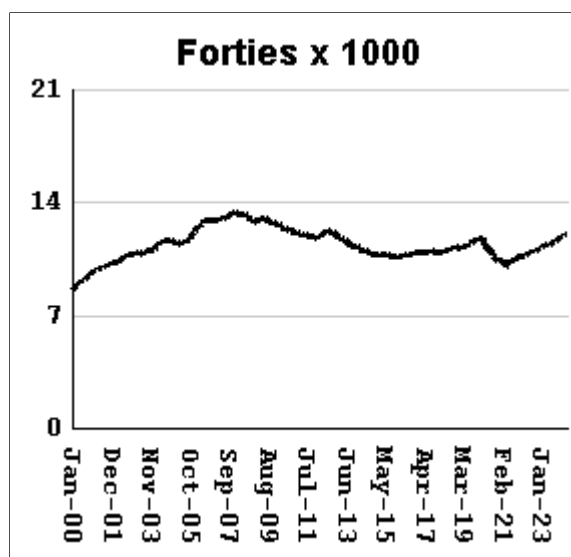
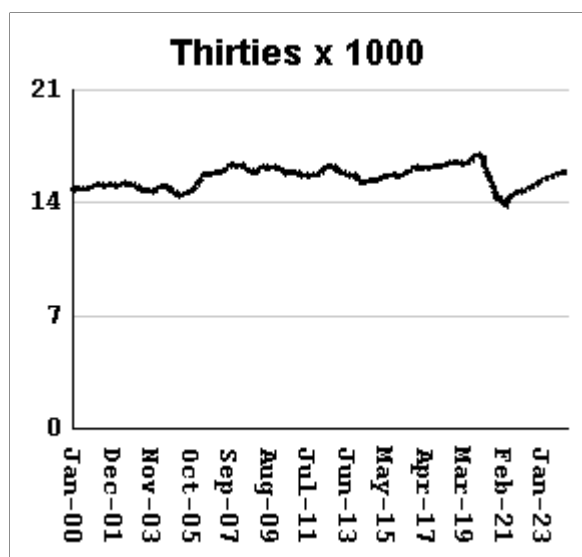
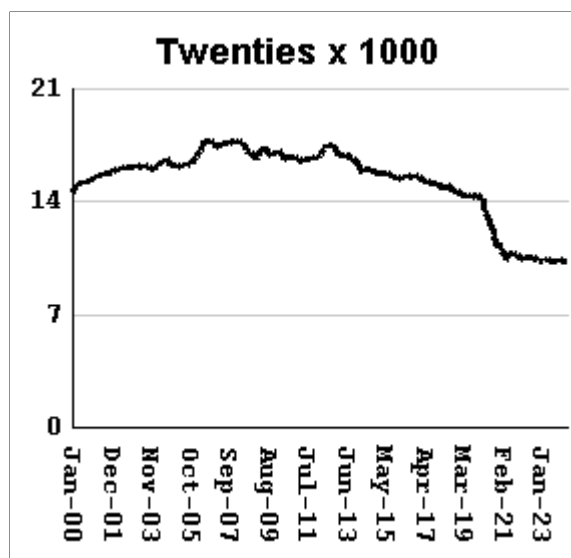
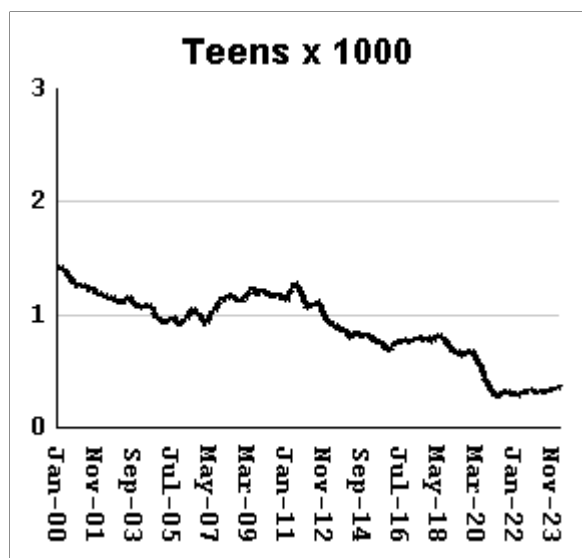
The "aging inmate population" is a concern in correctional systems throughout America, including Georgia. Here, the increase in inmate age is the result of several factors. Teenagers have been steered away from prison by increased usage of probation and other alternatives, at least for their first convictions. And there has been a surge of middle-aged male sex offenders due to the expanding "It's OK to tell" ethos. But most importantly, more severe sentence lengths and release policies have greatly increased the length of time that most offenders -- especially violent ones -- spend in prison, thereby increasing their average age.



Average age of active inmates	RISES BY	.02	from	41.45	to	41.47
Number in their teens	RISES BY	17	from	350	to	367
Percentage in their teens	RISES BY	.03%	from	.69%	to	0.72%
Number in their twenties	RISES BY	36	from	10,297	to	10,333
Percentage in their twenties	falls by	0.04%	from	20.31%	to	20.27%
Number in their thirties	RISES BY	57	from	15,910	to	15,967
Percentage in their thirties	falls by	0.06%	from	31.38%	to	31.32%
Number in their forties	RISES BY	118	from	11,994	to	12,112
Percentage in their forties	RISES BY	0.10%	from	23.66%	to	23.76%
Number in their fifties	RISES BY	42	from	7233	to	7,275
Percentage in their fifties	falls by	0.00%	...	14.27%	at	14.27%
Number age sixty and up	RISES BY	46	from	4916	to	4,962
Percentage age sixty and up	RISES BY	.03%	from	9.7%	to	9.73%

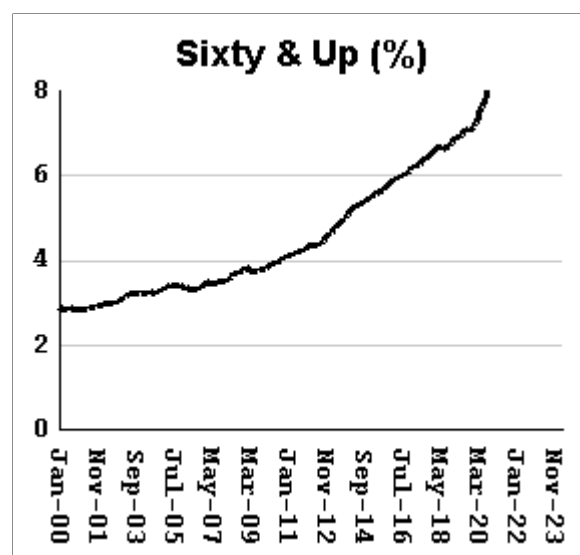
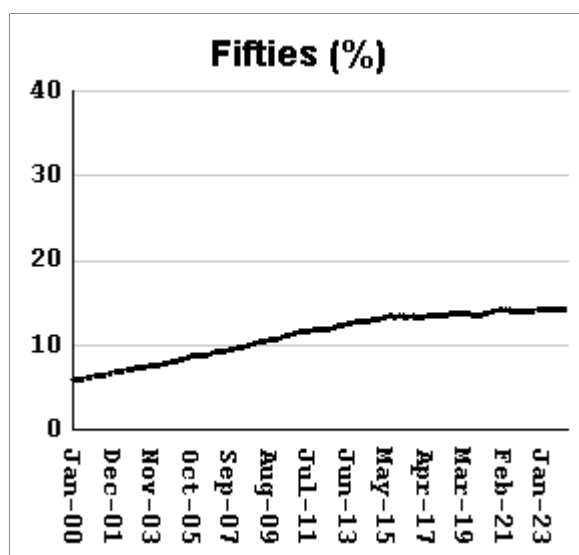
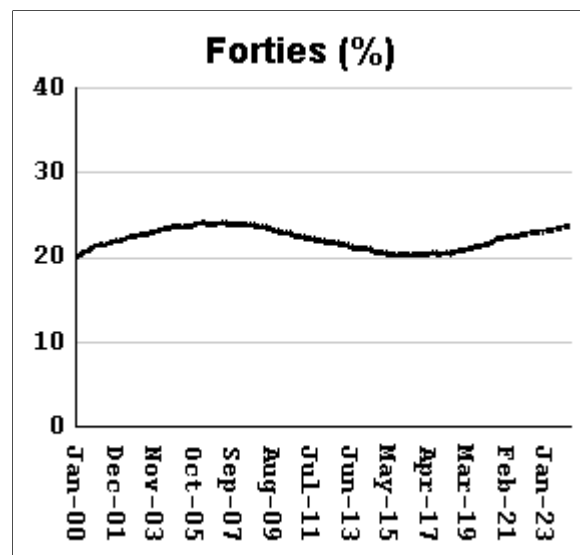
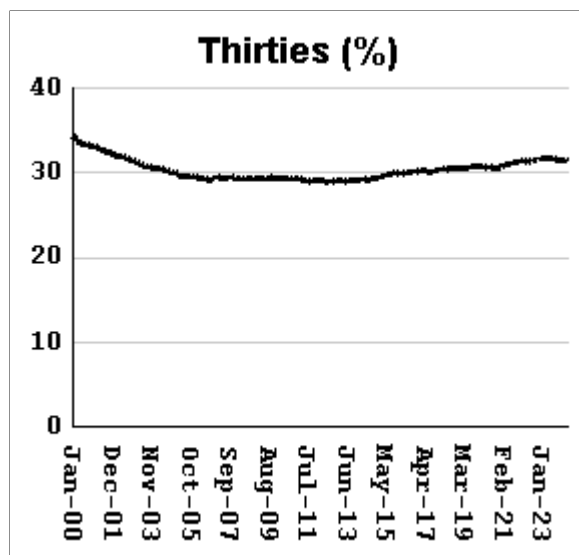
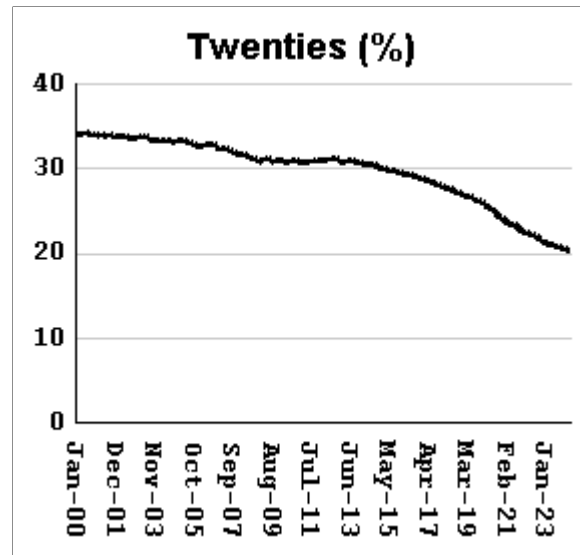
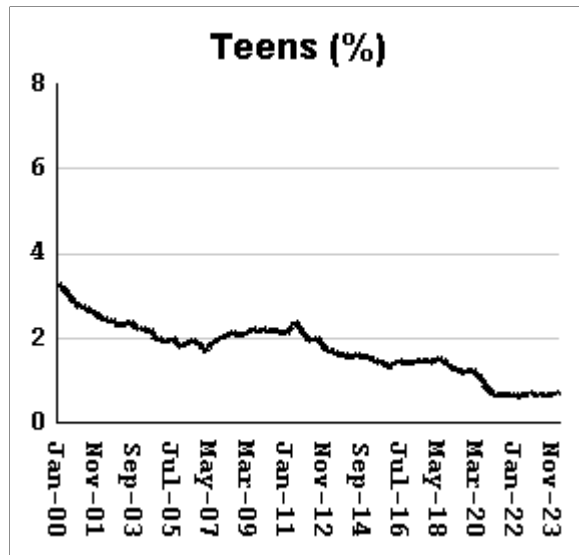
# Monthly counts of inmates by age group, Jan-2000 to Apr-2024

Y-axis of Twenties/Thirties/Forties/Fifties runs from 0 to 21,000. Y-axis of Teens/Sixty+ runs from 0 to 3,000.



# Monthly percentages of inmates by age group, Jan-2000 to Apr-2024

Y-axis of Twenties/Thirties/Forties/Fifties runs from 0% to 40%. Y-axis of Teens/Sixty+ runs from 0% to 8%

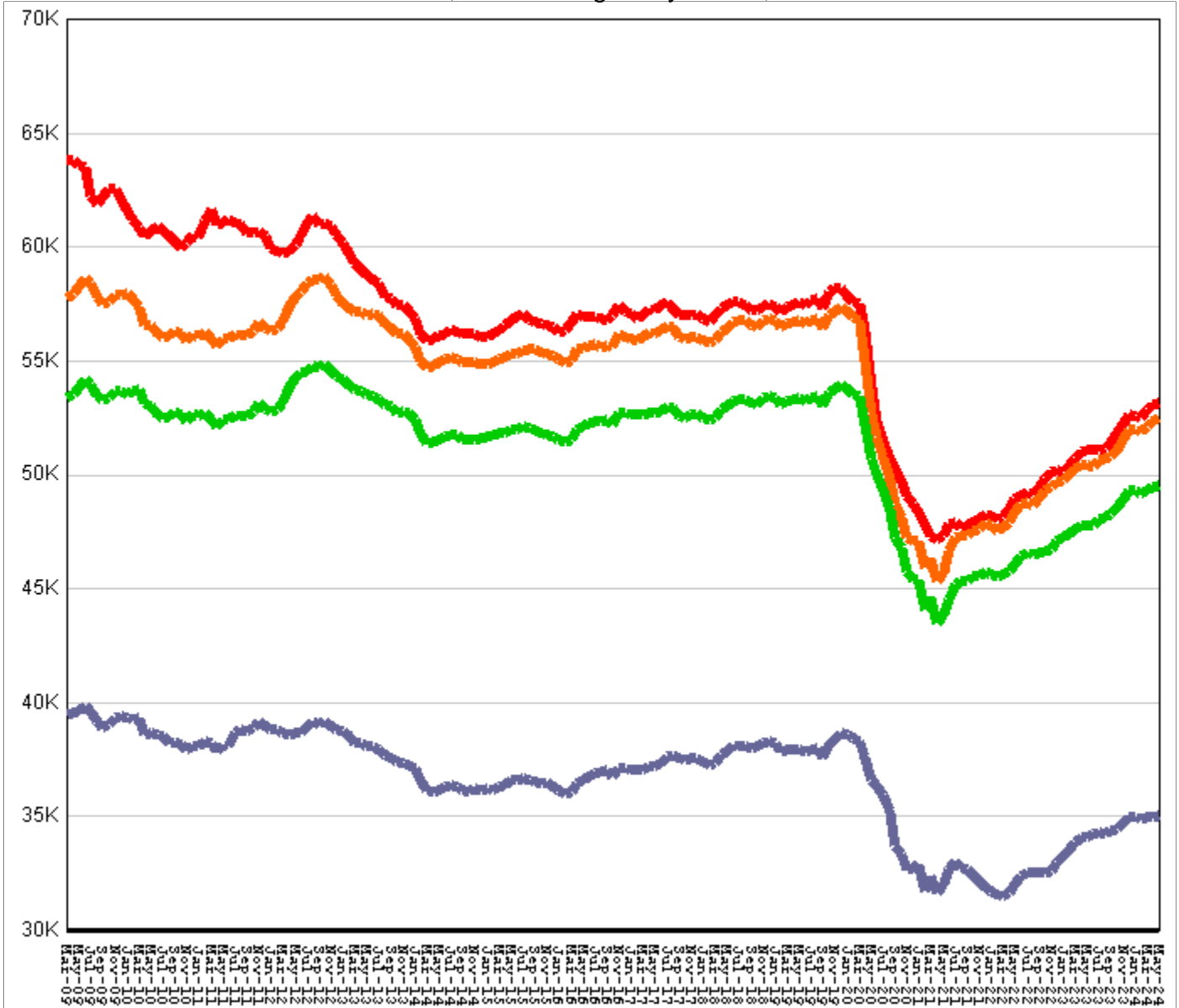


## Inmate counts & percentages by age, for past 48 months

Month	Avg Age	Teens		Twenties		Thirties		Forties		Fifties		Sixty & Up	
		Num-ber	Per-cent	Num-ber	Per-cent	Num-ber	Per-cent	Num-ber	Per-cent	Num-ber	Per-cent	Num-ber	Per-cent
May-20	39.87	562	1.09%	13110	25.33%	15839	30.61%	11201	21.64%	7120	13.76%	3934	7.60%
Jun-20	39.94	534	1.05%	12833	25.25%	15636	30.76%	11098	21.84%	7028	13.83%	3919	7.71%
Jul-20	40.07	480	0.96%	12398	24.92%	15192	30.53%	10895	21.90%	6920	13.91%	3887	7.81%
Aug-20	40.14	440	0.90%	12136	24.79%	14912	30.46%	10779	22.02%	6831	13.95%	3870	7.91%
Sep-20	40.2	418	0.86%	11926	24.68%	14810	30.64%	10716	22.17%	6789	14.05%	3879	8.03%
Oct-20	40.28	391	0.82%	11611	24.35%	14551	30.51%	10577	22.18%	6702	14.05%	3865	8.11%
Nov-20	40.41	353	0.76%	11175	24.04%	14190	30.53%	10351	22.27%	6572	14.14%	3855	8.29%
Dec-20	40.38	341	0.72%	11373	24.09%	14447	30.61%	10510	22.27%	6632	14.05%	3911	8.29%
Jan-21	40.5	305	0.66%	10949	23.84%	14059	30.61%	10263	22.35%	6469	14.09%	3890	8.47%
Feb-21	40.54	292	0.64%	10793	23.75%	14071	30.97%	10262	22.59%	6424	14.14%	3875	8.53%
Mar-21	40.57	297	0.65%	10666	23.50%	13999	30.84%	10173	22.41%	6372	14.04%	3889	8.57%
Apr-21	40.7	273	0.62%	10315	23.27%	13640	30.77%	9962	22.47%	6280	14.17%	3872	8.73%
May-21	40.63	290	0.64%	10583	23.44%	14018	31.05%	10174	22.53%	6372	14.11%	3925	8.69%
Jun-21	40.59	307	0.67%	10778	23.48%	14244	31.03%	10280	22.40%	6450	14.05%	3981	8.67%
Jul-21	40.59	316	0.68%	10853	23.34%	14429	31.04%	10384	22.34%	6494	13.97%	4024	8.66%
Aug-21	40.61	317	0.68%	10798	23.15%	14527	31.15%	10472	22.45%	6514	13.97%	4047	8.68%
Sep-21	40.65	317	0.68%	10740	22.97%	14597	31.21%	10495	22.44%	6523	13.95%	4102	8.77%
Oct-21	40.69	299	0.64%	10641	22.74%	14648	31.30%	10574	22.60%	6527	13.95%	4112	8.79%
Nov-21	40.7	299	0.64%	10629	22.66%	14705	31.35%	10651	22.71%	6535	13.93%	4128	8.80%
Dec-21	40.73	303	0.64%	10600	22.53%	14734	31.32%	10688	22.72%	6567	13.96%	4156	8.83%
Jan-22	40.79	294	0.63%	10477	22.44%	14642	31.37%	10641	22.79%	6572	14.08%	4163	8.92%
Feb-22	40.8	299	0.64%	10478	22.43%	14679	31.42%	10666	22.83%	6571	14.06%	4183	8.95%
Mar-22	40.8	296	0.63%	10527	22.35%	14772	31.36%	10729	22.77%	6581	13.97%	4212	8.94%
Apr-22	40.83	286	0.61%	10520	22.30%	14766	31.30%	10785	22.86%	6603	13.99%	4228	8.96%
May-22	40.86	282	0.60%	10504	22.23%	14819	31.37%	10818	22.90%	6604	13.98%	4264	9.03%
Jun-22	40.85	307	0.64%	10590	22.21%	14934	31.32%	10928	22.92%	6635	13.92%	4291	9.00%
Jul-22	40.89	316	0.66%	10546	22.06%	14976	31.33%	10970	22.95%	6677	13.97%	4318	9.03%
Aug-22	40.93	319	0.67%	10515	21.99%	15023	31.42%	11012	23.03%	6713	14.04%	4360	9.12%
Sep-22	40.97	316	0.66%	10433	21.78%	15045	31.41%	10983	22.93%	6741	14.07%	4392	9.17%
Oct-22	41	323	0.67%	10374	21.65%	15131	31.58%	11037	23.03%	6756	14.10%	4409	9.20%
Nov-22	41.01	334	0.69%	10398	21.57%	15235	31.61%	11139	23.11%	6803	14.11%	4454	9.24%
Dec-22	41.04	340	0.70%	10360	21.35%	15318	31.57%	11162	23.01%	6855	14.13%	4487	9.25%
Jan-23	41.07	328	0.67%	10338	21.26%	15399	31.66%	11200	23.03%	6875	14.14%	4530	9.31%
Feb-23	41.1	317	0.65%	10340	21.17%	15467	31.67%	11291	23.12%	6879	14.09%	4581	9.38%
Mar-23	41.09	317	0.64%	10393	21.14%	15557	31.65%	11379	23.15%	6928	14.09%	4582	9.32%
Apr-23	41.12	307	0.62%	10385	21.13%	15559	31.65%	11388	23.17%	6931	14.10%	4590	9.34%
May-23	41.15	313	0.64%	10340	21.12%	15563	31.79%	11364	23.21%	6924	14.14%	4605	9.41%
Jun-23	41.18	314	0.64%	10313	20.95%	15626	31.75%	11395	23.15%	6943	14.11%	4627	9.40%
Jul-23	41.21	320	0.65%	10325	20.91%	15697	31.79%	11507	23.31%	6980	14.14%	4663	9.44%
Aug-23	41.27	306	0.62%	10280	20.79%	15634	31.62%	11542	23.34%	6980	14.12%	4709	9.52%
Sep-23	41.29	316	0.64%	10295	20.75%	15653	31.55%	11604	23.39%	7006	14.12%	4745	9.56%
Oct-23	41.3	333	0.67%	10308	20.64%	15761	31.56%	11732	23.49%	7054	14.12%	4794	9.60%
Nov-23	41.32	334	0.66%	10398	20.63%	15862	31.47%	11862	23.53%	7121	14.13%	4830	9.58%
Dec-23	41.36	343	0.68%	10361	20.54%	15840	31.41%	11907	23.61%	7152	14.18%	4832	9.58%
Jan-24	41.38	348	0.69%	10343	20.50%	15916	31.54%	11919	23.62%	7183	14.23%	4852	9.61%
Feb-24	41.42	343	0.68%	10290	20.36%	15889	31.44%	11947	23.64%	7196	14.24%	4878	9.65%
Mar-24	41.45	350	0.69%	10297	20.31%	15910	31.38%	11994	23.66%	7233	14.27%	4916	9.70%
Apr-24	41.47	367	0.72%	10333	20.27%	15967	31.32%	12112	23.76%	7275	14.27%	4962	9.73%

## All housed offenders under GDC jurisdiction

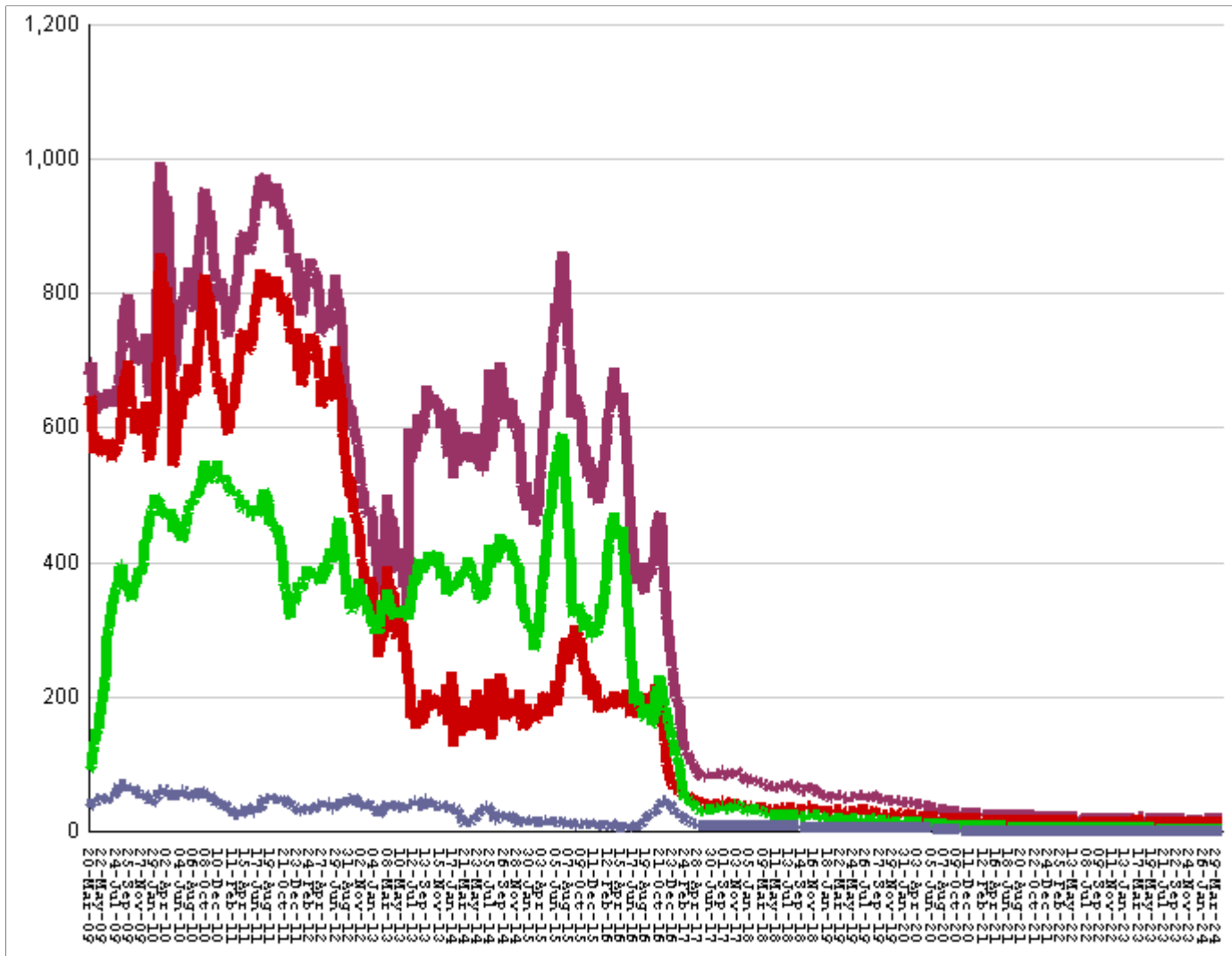
March 20, 2009 through May 03, 2024



<b>All in bed + probs in jail + backlog</b>	<b>RISE BY</b>	<b>58</b>	<b>from</b>	<b>53,103</b>	<b>to</b>	<b>53,161</b>
Probationers in jail	....	....	...	18	at	18
Inmate jail backlog	RISES BY	21	from	639	to	660
<b>All in beds: inmate + Prob + parole</b>	<b>RISE BY</b>	<b>37</b>	<b>from</b>	<b>52,446</b>	<b>to</b>	<b>52,483</b>
Total probationers in beds	RISE BY	20	from	2,913	to	2,933
Probation detention centers	fall by	15	from	1,436	to	1,421
Probation boot camps	fall by		from		to	
Probation RSAT	RISE BY	35	from	1477	to	1,512
Parole revocation centers	fall by		from		to	
<b>All in inmate beds: state + other</b>	<b>RISE BY</b>	<b>17</b>	<b>from</b>	<b>49,533</b>	<b>to</b>	<b>49,550</b>
Other inmate facilities :	fall by	24	from	14,513	to	14,489
Inmate boot camps	...	...	...	0	at	0
Private prisons	fall by	25	from	7591	to	7,566
County prisons	fall by	15	from	4410	to	4,395
Transitional centers	RISE BY	16	from	2512	to	2,528
<b>In state prisons only</b>	<b>RISE BY</b>	<b>41</b>	<b>from</b>	<b>35,020</b>	<b>to</b>	<b>35,061</b>

## Probationers in jail awaiting placement in facilities

March 20, 2009 through May 03, 2024



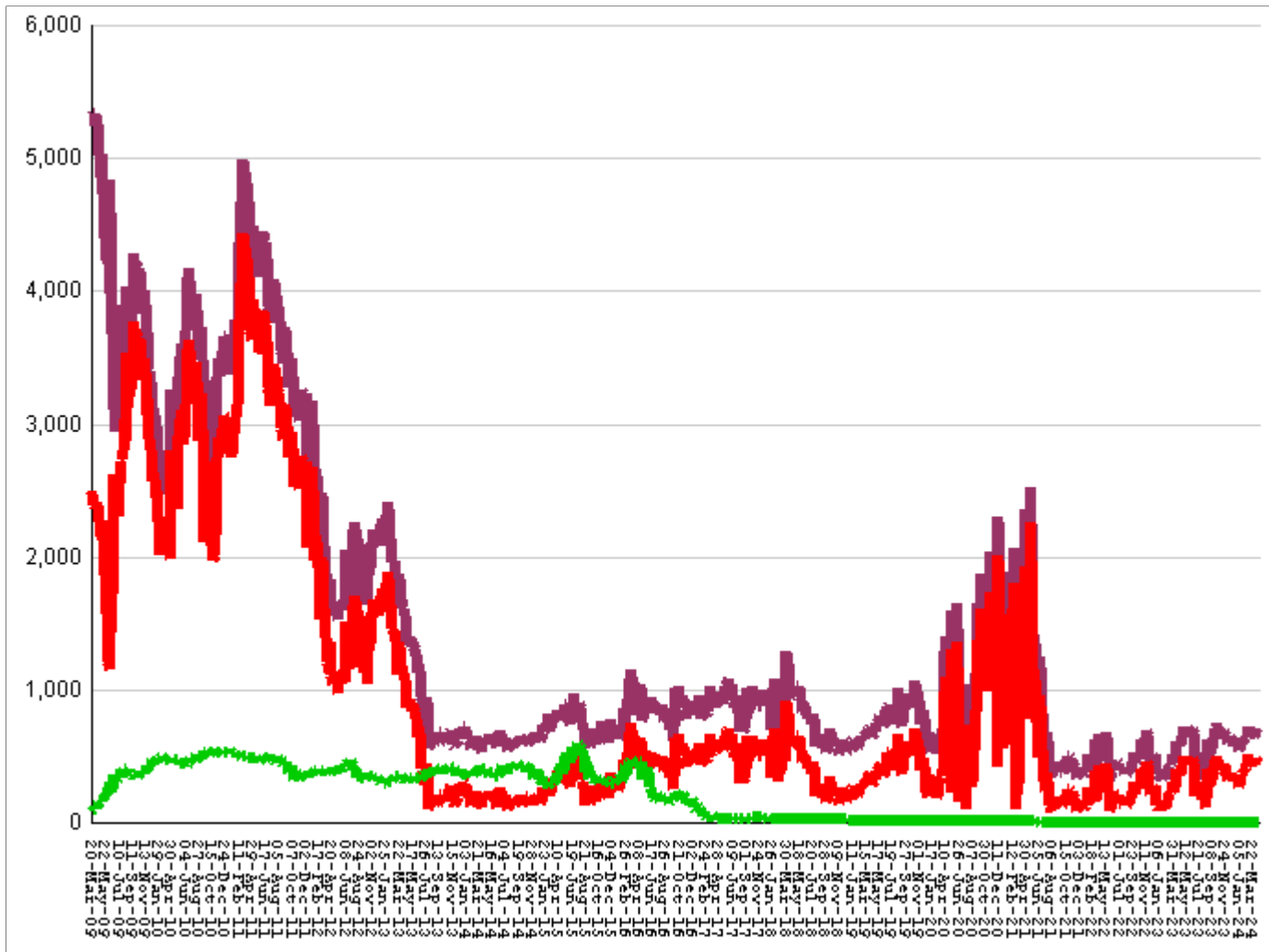
This graph shows, for each Friday since March 20 2009, the number of sentenced felony probationers who were waiting in jail for placement in facilities that GDC operates for housing probationers -- detention centers, probation residential substance abuse treatment (RSAT) centers, and probation boot camps. Counts include both those offenders sentenced directly from court, and those whose street probation was revoked.

Total probationers waiting in jail	...	...	...	level	at	18
... waiting for detention centers	...	...	...	level	at	14
... waiting for probation RSAT	...	...	...	level	at	3
... waiting for probation boot camps	...	...	...	level	at	1

The highest number of probationers waiting in jail was	994	on	05-MAR-10
... highest number waiting for detention centers was	859	on	05-MAR-10
... highest number waiting for probation RSAT was	592	on	10-JUL-15
... highest number waiting for probation boot camps was	70	on	18-SEP-09

## State inmates in jail awaiting placement in facilities

March 20, 2009 through May 03, 2024



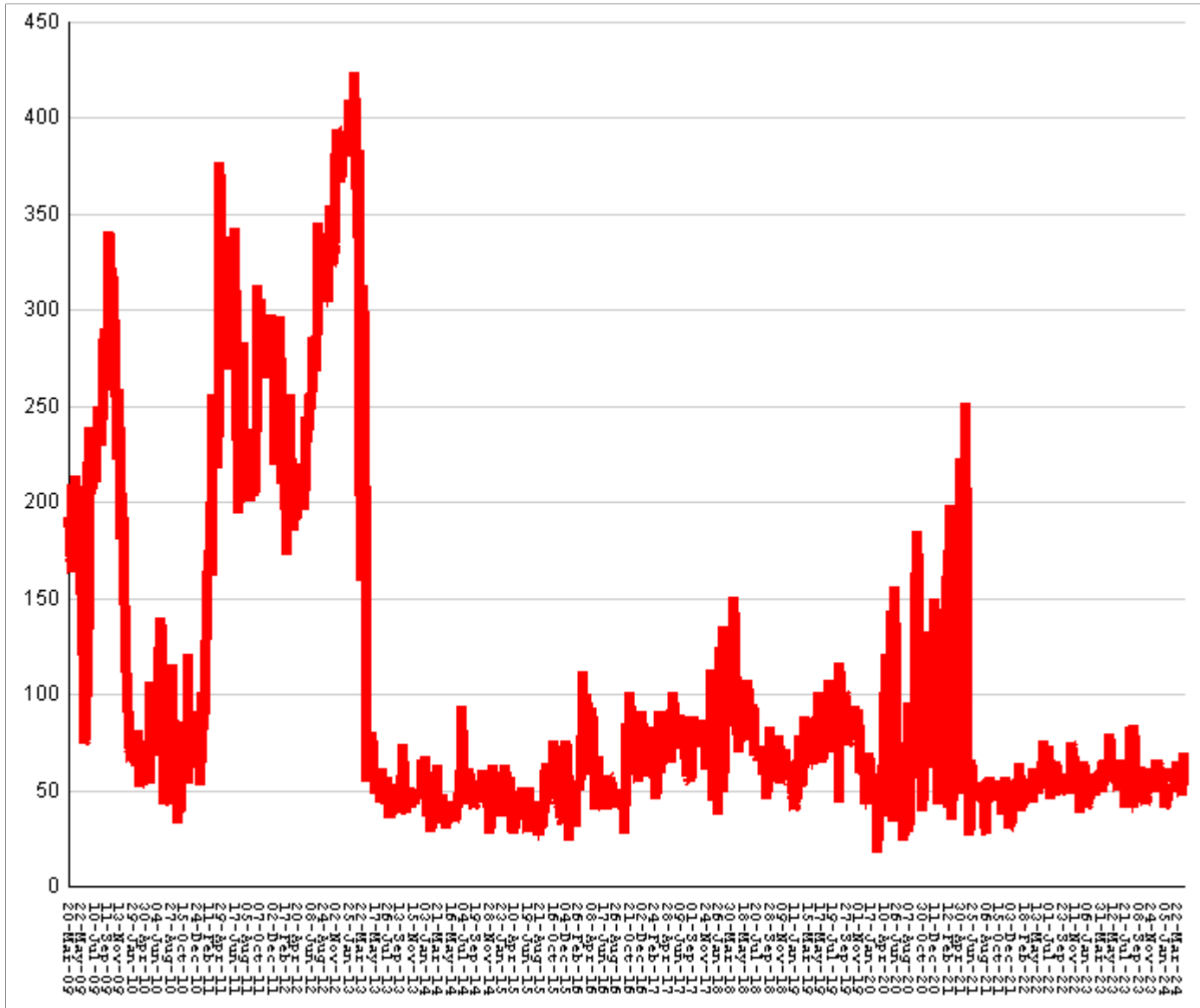
This graph shows, for each Friday since March 2009, the number of prisoners, probationers, and parolees in local jails who have been sentenced or revoked to state prison and whose documents have been received and verified by GDC. Most are almost immediately assigned to a diagnostic center, and are designated as in "admission processing". Of those a few hundred may be in the "transportation delayed" category because there is no room in the assigned diagnostic center, or because the inmate is being held for medical reasons, or for other court proceedings, or other reasons. Those remaining are "ready to be picked up".

<b>Total state inmates waiting in jail</b>	<b>RISE BY</b>	<b>21</b>	<b>from</b>	<b>639</b>	<b>to</b>	<b>660</b>
<b>... not yet assigned to a diagnostic center</b>	<b>fall by</b>	<b>2</b>	<b>from</b>	<b>26</b>	<b>to</b>	<b>24</b>
<b>... total "in admission processing"</b>	<b>RISE BY</b>	<b>23</b>	<b>from</b>	<b>613</b>	<b>to</b>	<b>636</b>
<b>... with "transportation delayed"</b>	<b>RISE BY</b>	<b>4</b>	<b>from</b>	<b>189</b>	<b>to</b>	<b>193</b>
<b>... ready to be picked up</b>	<b>RISE BY</b>	<b>19</b>	<b>from</b>	<b>424</b>	<b>to</b>	<b>443</b>

<b>The highest number of state inmates waiting in jail was</b>	<b>5338</b>	<b>on</b>	<b>27-MAR-09</b>
<b>... highest number not asg to a diagnostic center was</b>	<b>2881</b>	<b>on</b>	<b>12-JUN-09</b>
<b>... highest number in admission processing was</b>	<b>4916</b>	<b>on</b>	<b>25-MAR-11</b>
<b>... highest number with transportation delayed was</b>	<b>645</b>	<b>on</b>	<b>14-JAN-11</b>
<b>... highest number ready to be pickup was</b>	<b>4435</b>	<b>on</b>	<b>25-MAR-11</b>

## Female state inmates in jail awaiting pickup

March 20, 2009 through May 03, 2024



This graph shows, for each Friday since March 2009, the number of female state prisoners in local jails who were assigned to diagnostic centers but had not yet been picked up.

<b>Female state inmates in jails waiting picked up</b>	<b>RISE BY</b>	<b>11</b>	<b>from</b>	<b>58</b>	<b>to</b>	<b>69</b>
<b>The highest number of female inmates waiting in jail was</b>		<b>424</b>	<b>on</b>	<b>01-FEB-13</b>		
<b>The lowest number of female inmates waiting in jail was</b>		<b>17</b>	<b>on</b>	<b>20-MAR-20</b>		



# Summary of housed prisoners, parolees, and probationers

Week ending	Prison	Parole	Probation			Prison+parole+probation	Jail		Total
	Total inmates	Revocation centers	Prob RSAT	Boot camp	Detention		Inmate backlog	Probationers	Prison+parole+probation+jail
12-May-2023	47668		1568		1114	50350	657	19	51026
19-May-2023	47804		1601		1108	50513	643	19	51175
26-May-2023	47740		1548		1102	50390	717	19	51126
02-Jun-2023	47646		1535		1118	50299	678	19	50996
09-Jun-2023	47610		1489		1130	50229	671	19	50919
16-Jun-2023	47620		1522		1150	50292	705	18	51015
23-Jun-2023	47727		1481		1152	50360	694	18	51072
30-Jun-2023	47959		1411		1183	50553	713	18	51284
07-Jul-2023	47942		1380		1181	50503	526	18	51047
14-Jul-2023	48007		1383		1163	50553	445	18	51016
21-Jul-2023	48125		1375		1184	50684	464	18	51166
28-Jul-2023	48154		1413		1202	50769	415	18	51202
04-Aug-2023	48140		1379		1206	50725	411	18	51154
11-Aug-2023	48103		1414		1187	50704	332	18	51054
18-Aug-2023	48177		1299		1198	50674	397	18	51089
25-Aug-2023	48136		1323		1202	50661	522	18	51201
01-Sep-2023	48202		1307		1215	50724	630	18	51372
08-Sep-2023	48156		1305		1205	50666	540	18	51224
15-Sep-2023	48208		1297		1224	50729	507	18	51254
22-Sep-2023	48259		1312		1203	50774	565	18	51357
29-Sep-2023	48412		1327		1161	50900	627	18	51545
06-Oct-2023	48407		1305		1203	50915	704	18	51637
13-Oct-2023	48543		1313		1221	51077	642	18	51737
20-Oct-2023	48597		1312		1232	51141	725	18	51884
27-Oct-2023	48698		1328		1235	51261	742	18	52021
03-Nov-2023	48781		1298		1265	51344	688	18	52050
10-Nov-2023	48909		1389		1244	51542	662	17	52221
17-Nov-2023	49061		1357		1274	51692	645	17	52354
24-Nov-2023	49087		1424		1262	51773	694	17	52484
01-Dec-2023	49237		1401		1265	51903	621	17	52541
08-Dec-2023	49227		1387		1266	51880	593	17	52490
15-Dec-2023	49240		1410		1263	51913	631	17	52561
22-Dec-2023	49353		1411		1276	52040	634	17	52691
29-Dec-2023	49410		1374		1227	52011	652	17	52680
05-Jan-2024	49392		1405		1237	52034	534	17	52585
12-Jan-2024	49307		1402		1219	51928	567	17	52512
19-Jan-2024	49259		1398		1255	51912	604	17	52533
26-Jan-2024	49243		1425		1273	51941	603	17	52561
02-Feb-2024	49176		1411		1327	51914	614	18	52546
09-Feb-2024	49108		1408		1335	51851	577	18	52446
16-Feb-2024	49160		1406		1343	51909	598	18	52525
23-Feb-2024	49131		1423		1346	51900	620	18	52538
01-Mar-2024	49200		1449		1358	52007	643	18	52668
08-Mar-2024	49218		1430		1400	52048	673	18	52739
15-Mar-2024	49255		1435		1412	52102	702	18	52822
22-Mar-2024	49304		1417		1404	52125	675	18	52818
29-Mar-2024	49434		1459		1392	52285	722	18	53025
05-Apr-2024	49389		1507		1409	52305	680	18	53003
12-Apr-2024	49458		1454		1406	52318	666	18	53002
19-Apr-2024	49474		1455		1417	52346	692	18	53056
26-Apr-2024	49533		1477		1436	52446	639	18	53103
03-May-2024	49550		1512		1421	52483	660	18	53161

# Offenders housed in facilities for state prisoners

Week ending	In state prisons	In facilities other than state prisons						Total Inmates
		Transition centers	County prisons	Pre-rel centers	Private prisons	Inmate boot camps	Total others	
12-May-2023	33978	2190	4615		6884	1	13690	47668
19-May-2023	34127	2233	4555		6888	1	13677	47804
26-May-2023	34113	2231	4506		6889	1	13627	47740
02-Jun-2023	34064	2218	4477		6886	1	13582	47646
09-Jun-2023	34152	2191	4393		6873	1	13458	47610
16-Jun-2023	34202	2186	4352		6879	1	13418	47620
23-Jun-2023	34273	2191	4387		6875	1	13454	47727
30-Jun-2023	34378	2216	4468		6896	1	13581	47959
07-Jul-2023	34264	2185	4514		6978	1	13678	47942
14-Jul-2023	34225	2198	4468		7115	1	13782	48007
21-Jul-2023	34267	2199	4508		7150	1	13858	48125
28-Jul-2023	34265	2195	4519		7174	1	13889	48154
04-Aug-2023	34216	2213	4551		7159	1	13924	48140
11-Aug-2023	34180	2201	4578		7143	1	13923	48103
18-Aug-2023	34269	2197	4544		7167	0	13908	48177
25-Aug-2023	34271	2189	4509		7167	0	13865	48136
01-Sep-2023	34340	2192	4515		7155	0	13862	48202
08-Sep-2023	34349	2191	4448		7168	0	13807	48156
15-Sep-2023	34290	2191	4484		7243	0	13918	48208
22-Sep-2023	34364	2207	4420		7268	0	13895	48259
29-Sep-2023	34465	2210	4360		7377	0	13947	48412
06-Oct-2023	34422	2203	4338		7444	0	13985	48407
13-Oct-2023	34465	2209	4339		7530	0	14078	48543
20-Oct-2023	34460	2198	4366		7573	0	14137	48597
27-Oct-2023	34493	2204	4406		7595	0	14205	48698
03-Nov-2023	34562	2208	4404		7607	0	14219	48781
10-Nov-2023	34700	2202	4415		7592	0	14209	48909
17-Nov-2023	34818	2207	4431		7605	0	14243	49061
24-Nov-2023	34833	2191	4450		7613	0	14254	49087
01-Dec-2023	34916	2209	4494		7617	1	14321	49237
08-Dec-2023	34883	2216	4485		7642	1	14344	49227
15-Dec-2023	34920	2206	4503		7610	1	14320	49240
22-Dec-2023	34948	2235	4522		7647	1	14405	49353
29-Dec-2023	34970	2234	4530		7676	0	14440	49410
05-Jan-2024	34991	2232	4509		7660	0	14401	49392
12-Jan-2024	34944	2226	4532		7605	0	14363	49307
19-Jan-2024	34914	2219	4528		7598	0	14345	49259
26-Jan-2024	34920	2233	4519		7571	0	14323	49243
02-Feb-2024	34889	2224	4509		7554	0	14287	49176
09-Feb-2024	34842	2208	4485		7573	0	14266	49108
16-Feb-2024	34875	2205	4508		7572	0	14285	49160
23-Feb-2024	34855	2215	4481		7580	0	14276	49131
01-Mar-2024	34885	2227	4497		7591	0	14315	49200
08-Mar-2024	34943	2226	4457		7592	0	14275	49218
15-Mar-2024	34936	2264	4446		7609	0	14319	49255
22-Mar-2024	34924	2323	4463		7594	0	14380	49304
29-Mar-2024	34993	2389	4450		7602	0	14441	49434
05-Apr-2024	34968	2415	4435		7571	0	14421	49389
12-Apr-2024	34979	2429	4473		7577	0	14479	49458
19-Apr-2024	34957	2461	4467		7589	0	14517	49474
26-Apr-2024	35020	2512	4410		7591	0	14513	49533
03-May-2024	35061	2528	4395		7566	0	14489	49550

## Offenders waiting in local jails for state facilities

Week ending	Probationers waiting in jail				State prisoners wating in jail					Assigned females
	.. for PDCs	.. for RSAT	.. for boot camps	Total	Total backlog	Not yet assigned	In adm process	Delayed transport	Ready for pickup	
12-May-2023	14	4	1	19	657	29	628	189	439	62
19-May-2023	14	4	1	19	643	27	616	190	426	56
26-May-2023	14	4	1	19	717	28	689	193	496	68
02-Jun-2023	14	4	1	19	678	26	652	197	455	54
09-Jun-2023	14	4	1	19	671	27	644	194	450	52
16-Jun-2023	14	3	1	18	705	26	679	199	480	59
23-Jun-2023	14	3	1	18	694	27	667	208	459	50
30-Jun-2023	14	3	1	18	713	27	686	203	483	66
07-Jul-2023	14	3	1	18	526	27	499	203	296	49
14-Jul-2023	14	3	1	18	445	26	419	204	215	41
21-Jul-2023	14	3	1	18	464	26	438	200	238	46
28-Jul-2023	14	3	1	18	415	26	389	192	197	54
04-Aug-2023	14	3	1	18	411	26	385	196	189	41
11-Aug-2023	14	3	1	18	332	26	306	192	114	41
18-Aug-2023	14	3	1	18	397	26	371	194	177	58
25-Aug-2023	14	3	1	18	522	27	495	197	298	83
01-Sep-2023	14	3	1	18	630	27	603	199	404	62
08-Sep-2023	14	3	1	18	540	27	513	203	310	43
15-Sep-2023	14	3	1	18	507	27	480	206	274	51
22-Sep-2023	14	3	1	18	565	26	539	205	334	64
29-Sep-2023	14	3	1	18	627	26	601	203	398	84
06-Oct-2023	14	3	1	18	704	26	678	211	467	55
13-Oct-2023	14	3	1	18	642	28	614	213	401	42
20-Oct-2023	14	3	1	18	725	31	694	214	480	58
27-Oct-2023	14	3	1	18	742	31	711	214	497	51
03-Nov-2023	14	3	1	18	688	33	655	221	434	48
10-Nov-2023	13	3	1	17	662	32	630	225	405	60
17-Nov-2023	13	3	1	17	645	34	611	223	388	61
24-Nov-2023	13	3	1	17	694	33	661	221	440	53
01-Dec-2023	13	3	1	17	621	37	584	233	351	49
08-Dec-2023	13	3	1	17	593	41	552	231	321	53
15-Dec-2023	13	3	1	17	631	40	591	237	354	65
22-Dec-2023	13	3	1	17	634	40	594	241	353	66
29-Dec-2023	13	3	1	17	652	40	612	243	369	60
05-Jan-2024	13	3	1	17	534	40	494	236	258	53
12-Jan-2024	13	3	1	17	567	39	528	225	303	62
19-Jan-2024	13	3	1	17	604	36	568	215	353	59
26-Jan-2024	13	3	1	17	603	37	566	205	361	52
02-Feb-2024	14	3	1	18	614	37	577	208	369	50
09-Feb-2024	14	3	1	18	577	37	540	197	343	41
16-Feb-2024	14	3	1	18	598	36	562	199	363	43
23-Feb-2024	14	3	1	18	620	35	585	196	389	53
01-Mar-2024	14	3	1	18	643	40	603	188	415	54
08-Mar-2024	14	3	1	18	673	37	636	185	451	57
15-Mar-2024	14	3	1	18	702	37	665	188	477	52
22-Mar-2024	14	3	1	18	675	37	638	195	443	65
29-Mar-2024	14	3	1	18	722	23	699	192	507	61
05-Apr-2024	14	3	1	18	680	23	657	190	467	49
12-Apr-2024	14	3	1	18	666	22	644	187	457	47
19-Apr-2024	14	3	1	18	692	25	667	185	482	53
26-Apr-2024	14	3	1	18	639	26	613	189	424	58
03-May-2024	14	3	1	18	660	24	636	193	443	69