

Friday Report – overview and contents

The pages in The Friday Report are about adult offenders in Georgia's prisons and jails. They contain statistical snapshots and trends in the populations and movements of offenders in the state prison system, on probation, on parole, and in local jails. Information comes from databases of the Georgia Department of Corrections (GDC) and the Board of Pardons and Paroles, and from data provided by local jailers. Information is summarized into tables in the GDC/Parole Data Warehouse, and is extracted into these pages each Friday. Pages are organized according to the table that supplied the data.

The Monthly Research Table, named "MO_RESRCH" or simply "MO", contains data about state prisoners, grouped into statistically interesting categories. The table contains one record per month, from January 2000 to the present. Despite its being "monthly", it is updated weekly, because some data trickles in for several weeks before it becomes stable history.	
Page	Contents
MO-01	Clemencies and maxouts. Monthly graph from 2000 to present shows the monthly departures from prison via actions by the Georgia Parole Board (clemencies), and via service of 100% of the court ordered sentence (maxouts)
MO-02	48 months of releases. Table shows counts and percentages of releases via clemencies and maxouts, with and without probation to follow, for each of the past 48 months.
MO-03	Methamphetamine. Monthly graph from 2000 to present shows admissions, departures, population, and percent of population of inmates with a current offense of methamphetamine possession, sale, manufacturing, or trafficking, and the changing racial composition of the methamphetamine population.
MO-04	Non-violent first incarcerants. Monthly graph from 2000 to present shows admissions, departures, population, and percent of population of inmates without violent or sex crimes, who are serving their first Georgia felony incarceration.
MO-05	Seven Deadly Sins. Monthly graph from 2000 to present shows admissions, departures, population, and percent of population of inmates convicted of kidnapping, armed robbery, rape, aggravated sodomy, aggravated sexual battery, and aggravated child molestation, for whom especially severe penalties are prescribed.
MO-06	48 months of inmate subpopulations. Table shows number and percentage of white and non-white inmates with methamphetamine offenses, and non-violent first incarcerants, and inmates convicted of the Seven Deadly Sins.
MO-07	Inmate age overview. Line graph shows the average age of the inmate population, by month from 2000 to the present. Pie chart shows the number of currently active inmates in their teens, twenties, thirties, forties, fifties, and age sixty+.
MO-08	Counts by age group. Graphs show the count, by month from 2000 to the present, of inmates in their teens, twenties, thirties, forties, fifties, and age sixty+.
MO-09	Percentages by age group. Graphs show the <i>percentages</i> , by month from 2000 to the present, of inmates in their teens, twenties, thirties, forties, fifties, and age sixty+.
MO-10	48 months of inmate ages. Table shows average age of the standing population, and counts and percentages of teens, twenties, thirties, forties, fifties, and sixty+, for each of the past 48 months.

Friday Report – overview and contents (*continued*)

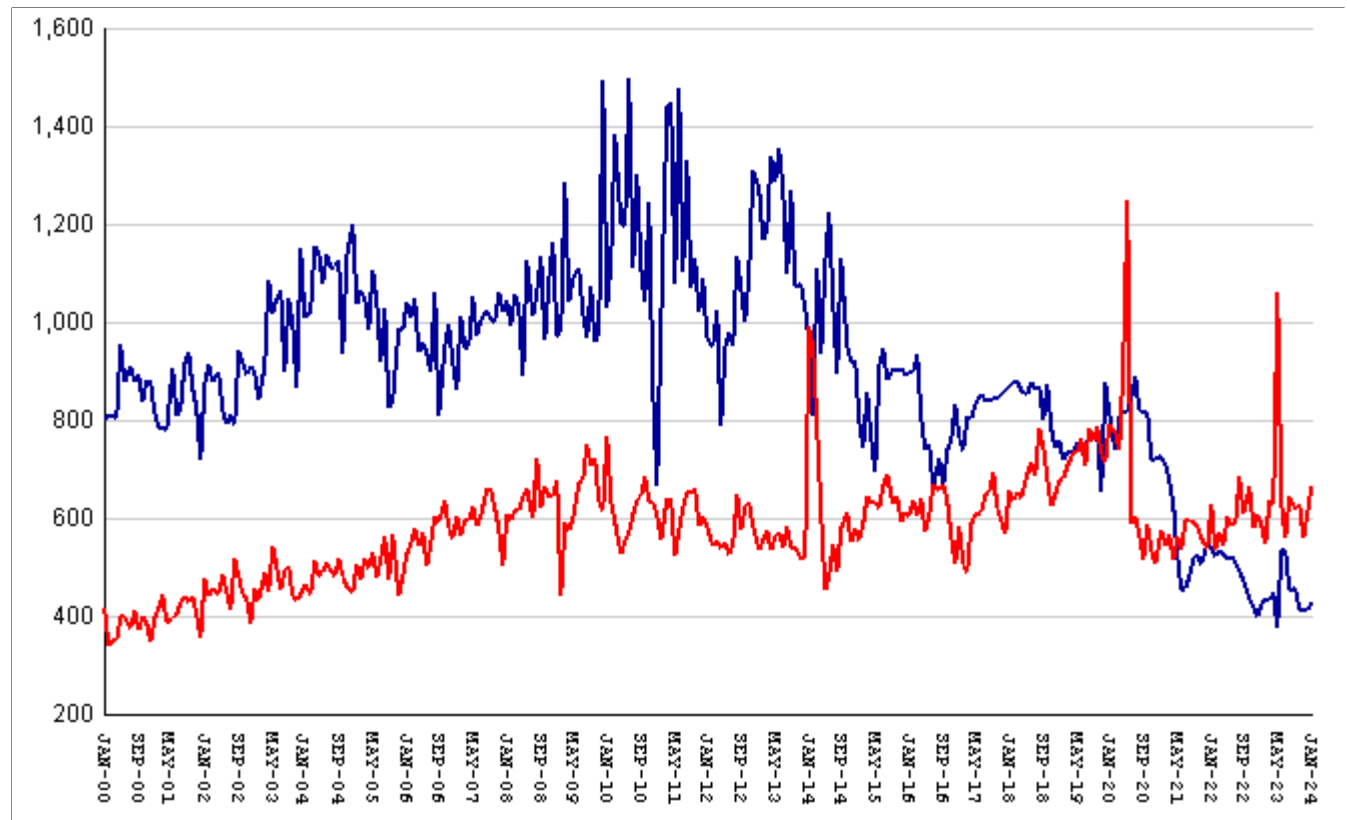
The MSR Table is based on the Management Summary Report (MSR), a snapshot report posted each week in GDC's Scribe database. MSR_RESRCH gathers that data into weekly trends, with one record for each Friday since March 20th, 2009.	
Page	Contents
MSR-01	All housed offenders. Weekly graph from March 20, 2009 to present, showing counts of inmates in state prisons, transitional centers, county prisons, private prisons, inmate boot camps, parole revocation centers, probation Residential Substance Abuse Treatment (RSAT), probation boot camps, probation detention centers, plus the inmate jail backlog and probationers in jail waiting for state facilities.
MSR-02	Probationers in jail. Weekly graph from March 20, 2009 to present, showing counts of probationers in local jails awaiting placement in probation detention centers, probation RSAT centers, and probation boot camps.
MSR-03	State inmates in jail. Weekly graph from March 20, 2009 to present, showing counts of state inmates in local jails awaiting placement in state prison facilities – including those who have not yet been assigned to a diagnostic center, those whose transportation has been delayed for some reason, and those who are ready to be picked up.
MSR-04	Female state inmates in jail. Weekly graph from March 20, 2009 to present, showing counts of female state inmates awaiting placement in a state prison for females.
MSR-05	52-week table: housed offenders. Data for each of the past 52 weeks, showing total prison inmates, parolees in revocation centers, probationers in RSAT/boot camp/detention centers, inmate jail backlog, probationers in jail waiting for facilities, with subtotals.
MSR-06	52-week table: state prisoners. Data for each of the past 52 weeks, showing inmates in state prisons, transition centers, county prisons, pre-release centers, private prisons, and inmate boot camps, with subtotals.
MSR-07	52-week table: waiting in jail. Data for each of the past 52 weeks, showing probationers waiting for detention centers, RSAT, and boot camp; and state prisoners not yet assigned to diagnostic centers, in admission process, with delayed transport, and ready for pickup, with subtotals.

The DCA table consists mainly of data submitted from each of Georgia's 140+ local jails, via the Georgia Crime Information Center (GCIC) to the Georgia Department of Community Affairs (DCA), which publishes its <u>County Jail Inmate Population Report</u> on its web site each month. GDC has collected summary statewide data from this report every month since its inception in January, 1993. The table also contains the inmate jail backlog as computed by GDC for the last Friday of each month, for comparison with the jailers' count of state inmates. Although nominally a monthly table, DCA_RESRCH is updated weekly to insure that the DCA data is correctly synchronized with the GDC jail backlog data.	
Page	Contents
DCA-01	Jail composition. Monthly graph from 1993 to the present shows trends in the numbers of unsentenced inmates, state inmates, county inmates, and other inmates.
DCA-02	Two views of jail backlog. Monthly graph from 1993 to present compares jailers' count of "state inmates" with GDC's count of the "inmate jail backlog", and explains that both are valid counts of different phenomena.
DCA-03	48-month table: local jails. Data from Georgia jailers for each of the past 48 months, showing total jail population, capacity, utilization, and number and percent of unsentenced inmates, state inmates, county inmates, and other inmates.

Releases by clemency and maxout, Jan-2000 to Jan-2024

There are two main ways of being released from a Georgia prison -- by actions of the Board of Pardons and Paroles ("Clemencies") and by service of 100% of the court-ordered sentences ("Maxouts"). "Clemency" includes paroles, reprieves, commutations, and transfer to other confinement prior to expiration of sentence.

"Other Releases" includes deaths, and sentences modified or overturned by the courts. Clemencies and maxouts may or may not be followed by periods of probation.



A. Clemency with probation to follow	RISES BY	5	from	366	to	371
B. Clemency only	RISES BY	11	from	47	to	58
C. Maxout with probation to follow	RISES BY	46	from	554	to	600
D. Maxout only (unsupervised)	RISES BY	6	from	58	to	64
E. Other releases	RISES BY	11	from	21	to	32
F. Total releases (A+B+C+D+E)	RISES BY	79	from	1046	to	1125
G. Total clemencies (A+B) (top line)	RISES BY	16	from	413	to	429
H. Total maxouts(C+D) (bottom line)	RISES BY	52	from	612	to	664
I. % of releases by clemency (G/F)	falls by	1.35%	from	39.48%	to	38.13%
J. % of releases by maxout (H/F)	RISES BY	.51%	from	58.51%	to	59.02%
K. Supervised releases (A+B+C)	RISES BY	62	from	967	to	1029
L. % unsupervised releases (D/F)	RISES BY	.15%	from	5.54%	to	5.69%
M. % supervised releases (K/F)	falls by	.98%	from	92.45%	to	91.47%

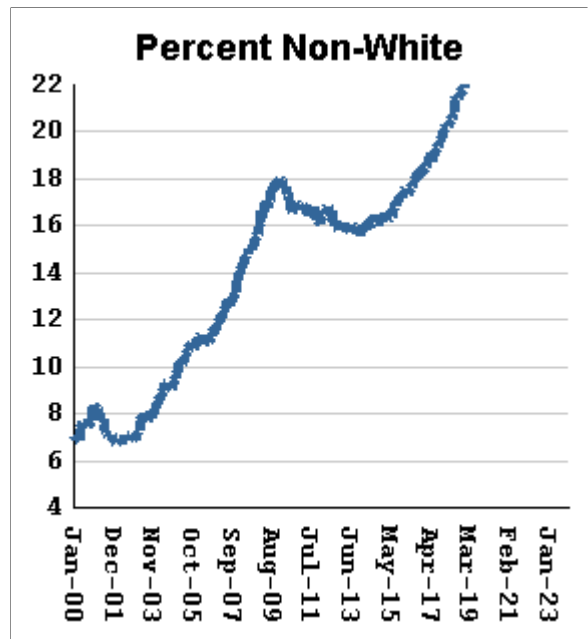
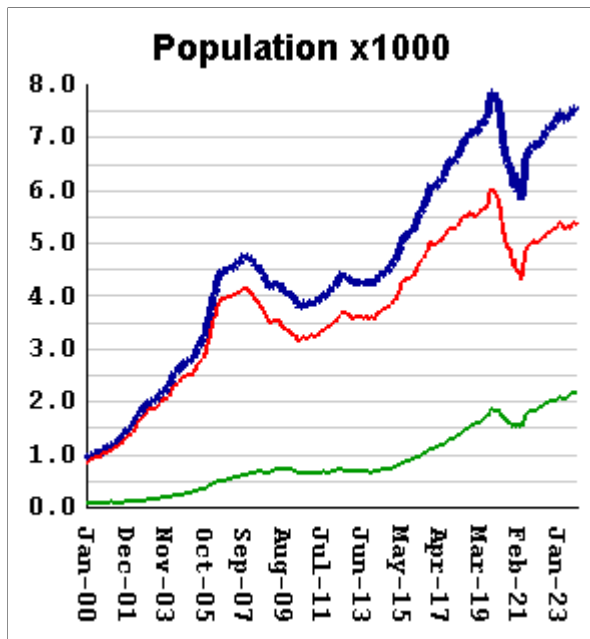
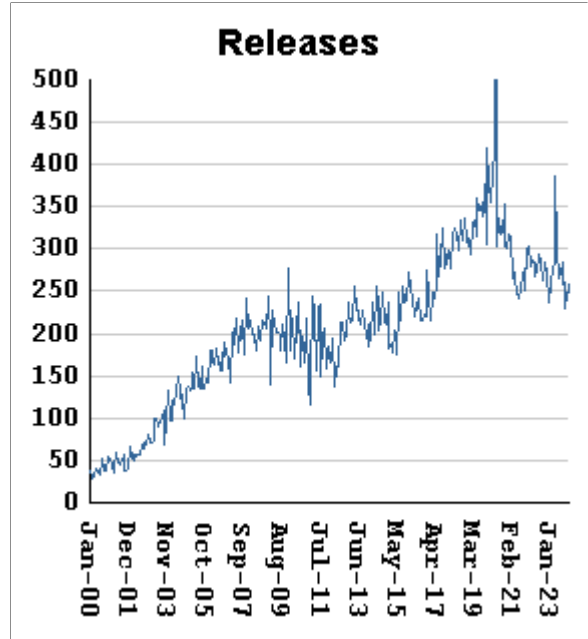
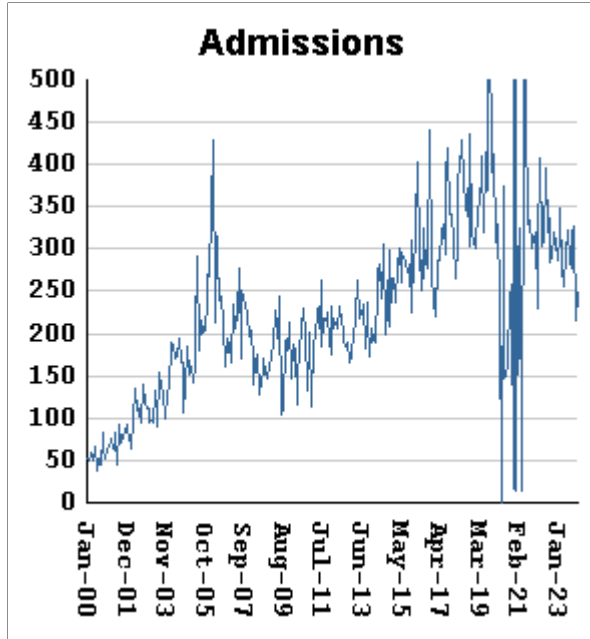
Monthly releases from prison by type of release, for the past 48 months

Month	A	B	C	D	E	F	G	H	I	J
	Clemency + Prob	Clemency Only	Maxout + Prob	Maxout Only	Other Rels	Total Releases (A+B+C+D+E)	Total Clemency (A+B)	Total Maxout (C+D)	Percent Clemency (G/F)	Percent Maxout (H/F)
Feb-20	633	105	687	90	21	1536	738	777	48.05%	50.59%
Mar-20	670	139	657	83	22	1571	809	740	51.50%	47.10%
Apr-20	699	118	812	105	19	1753	817	917	46.61%	52.31%
May-20	675	140	1093	155	28	2091	815	1248	38.98%	59.68%
Jun-20	717	127	534	54	15	1447	844	588	58.33%	40.64%
Jul-20	741	148	557	47	28	1521	889	604	58.45%	39.71%
Aug-20	676	145	514	55	34	1424	821	569	57.65%	39.96%
Sep-20	685	132	450	66	33	1366	817	516	59.81%	37.77%
Oct-20	694	122	515	71	29	1431	816	586	57.02%	40.95%
Nov-20	605	112	481	52	21	1271	717	533	56.41%	41.94%
Dec-20	624	99	446	60	18	1247	723	506	57.98%	40.58%
Jan-21	634	91	516	58	21	1320	725	574	54.92%	43.48%
Feb-21	614	98	480	63	20	1275	712	543	55.84%	42.59%
Mar-21	571	106	494	72	16	1259	677	566	53.77%	44.96%
Apr-21	532	97	456	60	24	1169	629	516	53.81%	44.14%
May-21	446	77	508	54	21	1106	523	562	47.29%	50.81%
Jun-21	365	87	469	66	21	1008	452	535	44.84%	53.08%
Jul-21	390	67	535	62	19	1073	457	597	42.59%	55.64%
Aug-21	411	70	533	62	28	1104	481	595	43.57%	53.89%
Sep-21	445	74	525	65	32	1141	519	590	45.49%	51.71%
Oct-21	449	76	527	55	21	1128	525	582	46.54%	51.60%
Nov-21	423	82	491	67	18	1081	505	558	46.72%	51.62%
Dec-21	470	81	482	57	18	1108	551	539	49.73%	48.65%
Jan-22	459	81	552	75	26	1193	540	627	45.26%	52.56%
Feb-22	444	80	465	71	24	1084	524	536	48.34%	49.45%
Mar-22	464	69	515	56	16	1120	533	571	47.59%	50.98%
Apr-22	458	70	473	68	16	1085	528	541	48.66%	49.86%
May-22	441	77	540	64	26	1148	518	604	45.12%	52.61%
Jun-22	461	60	529	57	21	1128	521	586	46.19%	51.95%
Jul-22	444	66	528	61	14	1113	510	589	45.82%	52.92%
Aug-22	426	66	618	66	21	1197	492	684	41.10%	57.14%
Sep-22	400	75	552	57	18	1102	475	609	43.10%	55.26%
Oct-22	376	59	606	61	23	1125	435	667	38.67%	59.29%
Nov-22	366	53	522	56	19	1016	419	578	41.24%	56.89%
Dec-22	345	57	553	56	28	1039	402	609	38.69%	58.61%
Jan-23	373	53	527	59	23	1035	426	586	41.16%	56.62%
Feb-23	392	43	497	50	17	999	435	547	43.54%	54.75%
Mar-23	378	54	574	62	24	1092	432	636	39.56%	58.24%
Apr-23	390	58	573	54	26	1101	448	627	40.69%	56.95%
May-23	328	46	937	125	20	1456	374	1062	25.69%	72.94%
Jun-23	463	70	569	58	19	1179	533	627	45.21%	53.18%
Jul-23	460	74	516	43	25	1118	534	559	47.76%	50.00%
Aug-23	407	47	589	56	22	1121	454	645	40.50%	57.54%
Sep-23	405	54	577	44	10	1090	459	621	42.11%	56.97%
Oct-23	363	51	578	52	31	1075	414	630	38.51%	58.60%
Nov-23	356	56	498	62	19	991	412	560	41.57%	56.51%
Dec-23	366	47	554	58	21	1046	413	612	39.48%	58.51%
Jan-24	371	58	600	64	32	1125	429	664	38.13%	59.02%

Inmates with meth crimes, by month, Jan-2000 to Jan-2024

Methamphetamine is one of the most addictive drugs ever known. At first it induces intense euphoria, but with continued use causes severe depression and physical deterioration, including the dental catastrophe known as "meth mouth".

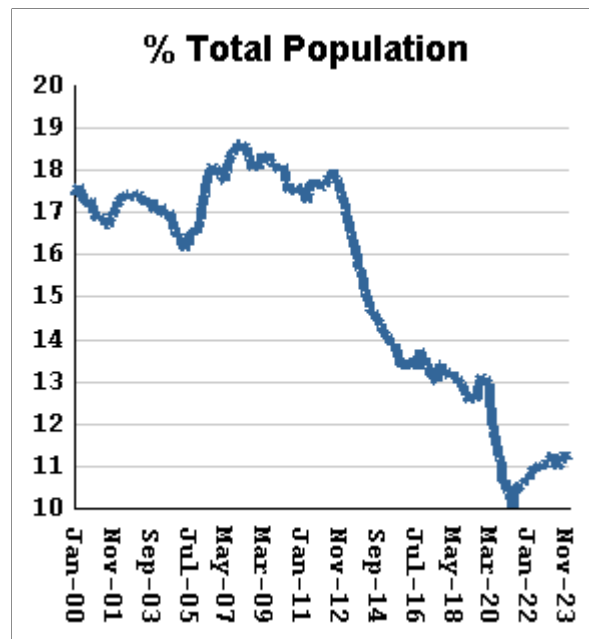
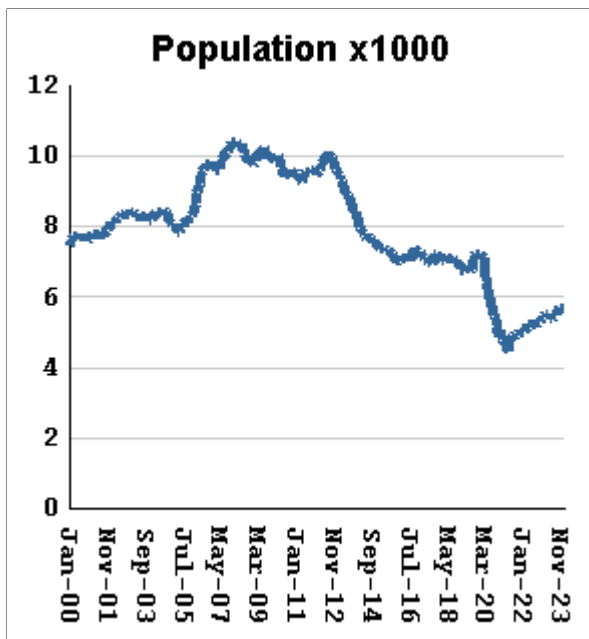
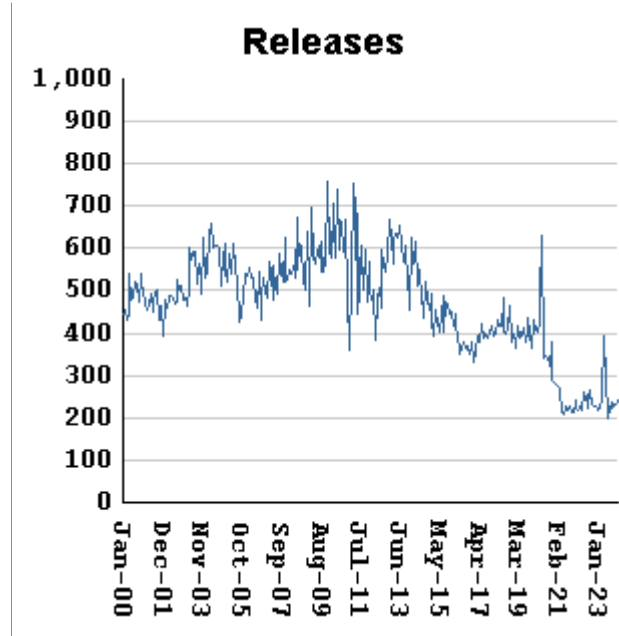
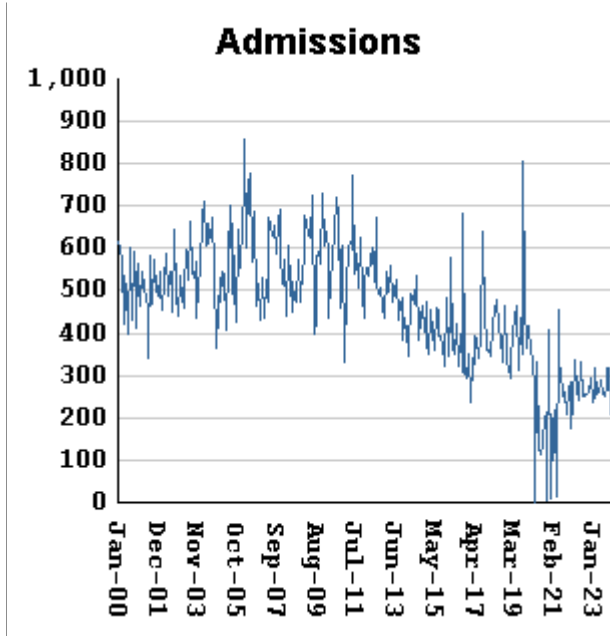
Georgia's meth epidemic peaked in 2007-2008, then declined, but is again growing. It started in the predominantly white northern counties, with blacks accounting for only about 5% of convictions. But black usage has expanded, and now accounts for about 15% of convictions.



Methamphetamine admissions	RISE BY	32	from	216	to	248
Methamphetamine releases	RISE BY	19	from	240	to	259
Methamphetamine population	falls by	11	from	7528	to	7517
Meth white population	falls by	8	from	5372	to	5364
Meth non-white population	RISES BY	18	from	2157	to	2175
Percent meth inmates who are non-white	RISES BY	.28 %	from	28.65%	to	28.93%

Non-violent first-incarcerants, by month, Jan-2000 to Jan-2024

Historically, about one in six Georgia prison inmates has been a first-time incarcerant with a non-violent crime. In 2012 Georgia passed HB1176, which aimed to curb the growth of prison population by steering the least dangerous, least hardened offenders away from prison through pre-trial intervention, diversion, drug courts and treatment programs, and raising the dollar thresholds that define property felonies. The expectation is that over time, these measures will reduce the percentage of first-time non-violent incarcerants in prison.



Non-viol/1st-Incar admissions

RISE BY 51 from 208 to 259

Non-viol/1st-Incar releases

RISE BY 10 from 230 to 240

Non-viol/1st-Incar population

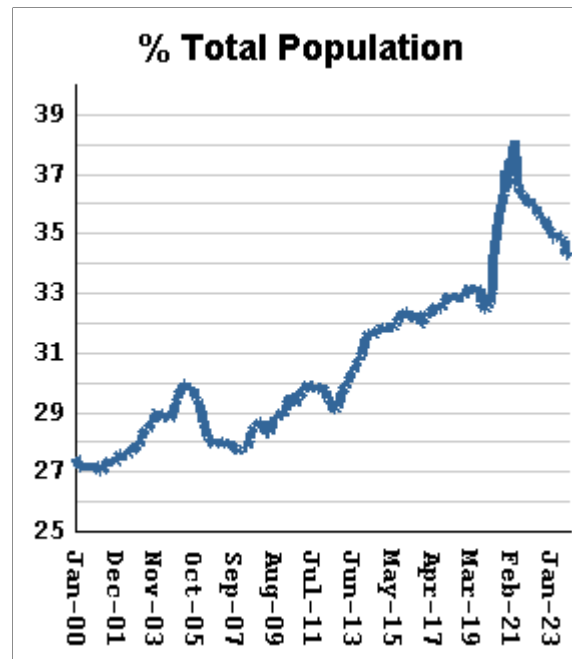
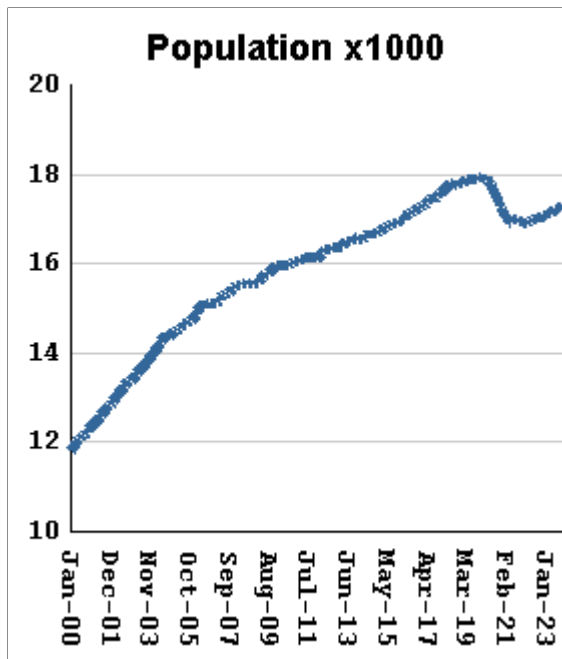
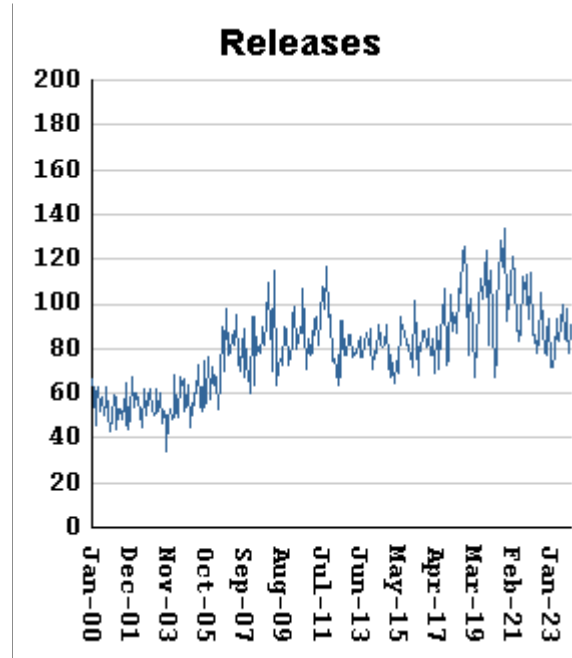
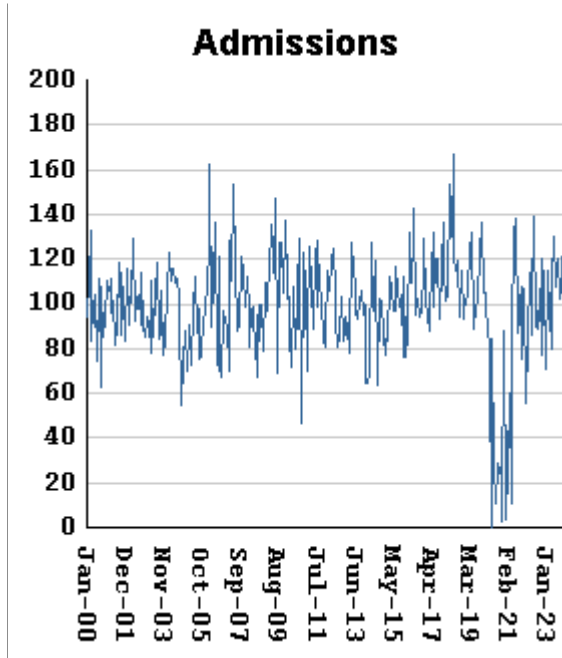
RISES BY 19 from 5671 to 5690

Non-viol/1st-Incar % of total population

RISES BY .03 % from 11.24% to 11.27%

"Seven Deadly Sins" by month, Jan-2000 to Jan-2024

Tough legislation in 1995 imposed mandatory ten-year minimum terms for kidnapping, armed robbery, rape, aggravated sodomy, aggravated sexual battery, and aggravated child molestation, and a minimum of 25 years for murder. A second conviction resulted in life without parole. As predicted, longer prison terms caused population to climb steeply for about a decade. It then began to level off, as releases started catching up with admissions. The 2008 dip in percentage of total population (bottom right) was caused by the surge of methamphetamine convictions (Page MO-03). Note: these graphs include inmates convicted before 1995.



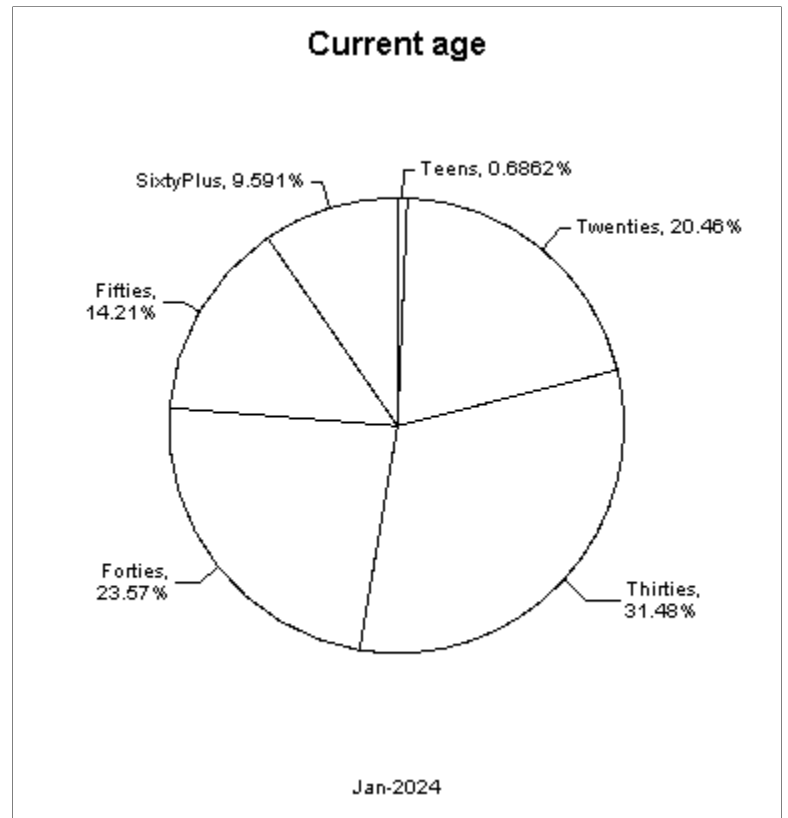
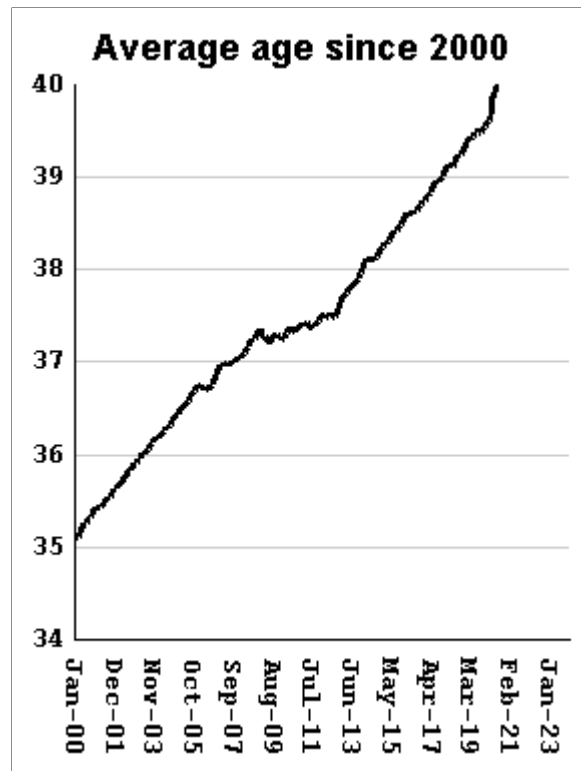
"Seven Deadly Sin" admissions	fall by	10	from	89	to	79
"Seven Deadly Sin" releases	RISE BY	13	from	78	to	91
"Seven Deadly Sin" population	falls by	12	from	17293	to	17281
"Seven Deadly Sin" % of total population	falls by	.04 %	from	34.28%	to	34.24%

Inmate subpopulation counts and percentages, for the past 48 months

Month	Methamphetamine						1st Incar Non-Violent		Seven Deadly Sins	
	Total Number	Total Percent	White Number	White Percent	Non White Number	Non White Percent	Number	Percent	Number	Percent
Feb-20	7746	14.12%	5893	76.08%	1860	24.01%	7090	12.93%	17910	32.66%
Mar-20	7598	14.01%	5776	76.02%	1828	24.06%	6923	12.76%	17919	33.04%
Apr-20	7183	13.69%	5435	75.66%	1754	24.42%	6437	12.26%	17841	33.99%
May-20	7016	13.56%	5307	75.64%	1715	24.44%	6137	11.86%	17822	34.43%
Jun-20	6858	13.49%	5245	76.48%	1697	24.74%	5916	11.64%	17740	34.90%
Jul-20	6673	13.41%	5027	75.33%	1652	24.76%	5685	11.42%	17623	35.41%
Aug-20	6522	13.32%	4903	75.18%	1624	24.90%	5483	11.20%	17535	35.81%
Sep-20	6447	13.34%	4916	76.25%	1605	24.90%	5364	11.10%	17426	36.05%
Oct-20	6353	13.32%	4781	75.26%	1577	24.82%	5198	10.90%	17356	36.39%
Nov-20	6066	13.05%	4542	74.88%	1528	25.19%	4914	10.57%	17249	37.10%
Dec-20	6316	13.38%	4720	74.73%	1600	25.33%	5036	10.67%	17239	36.52%
Jan-21	6014	13.09%	4493	74.71%	1525	25.36%	4767	10.38%	17134	37.30%
Feb-21	5988	13.18%	4488	74.95%	1554	25.95%	4683	10.31%	17040	37.50%
Mar-21	6048	13.32%	4476	74.01%	1576	26.06%	4632	10.20%	16989	37.43%
Apr-21	5791	13.06%	4278	73.87%	1517	26.20%	4430	9.99%	16912	38.14%
May-21	6130	13.58%	4574	74.62%	1622	26.46%	4674	10.35%	16905	37.44%
Jun-21	6395	13.93%	4721	73.82%	1711	26.76%	4792	10.44%	16954	36.93%
Jul-21	6615	14.23%	4862	73.50%	1757	26.56%	4878	10.49%	17003	36.57%
Aug-21	6691	14.34%	4918	73.50%	1786	26.69%	4913	10.53%	16978	36.40%
Sep-21	6756	14.44%	4958	73.39%	1802	26.67%	4947	10.58%	16975	36.29%
Oct-21	6780	14.49%	4977	73.41%	1807	26.65%	4946	10.57%	16937	36.19%
Nov-21	6844	14.59%	5030	73.50%	1827	26.69%	5001	10.66%	16940	36.11%
Dec-21	6861	14.58%	5037	73.41%	1828	26.64%	5040	10.71%	16954	36.03%
Jan-22	6787	14.54%	4990	73.52%	1829	26.95%	4989	10.69%	16896	36.19%
Feb-22	6811	14.58%	5015	73.63%	1851	27.18%	5007	10.71%	16894	36.15%
Mar-22	6933	14.71%	5051	72.85%	1886	27.20%	5116	10.86%	16922	35.91%
Apr-22	6953	14.73%	5063	72.82%	1894	27.24%	5162	10.94%	16930	35.88%
May-22	6995	14.80%	5090	72.77%	1926	27.53%	5147	10.89%	16949	35.87%
Jun-22	7115	14.92%	5163	72.57%	1958	27.52%	5240	10.99%	17006	35.66%
Jul-22	7141	14.94%	5171	72.41%	1974	27.64%	5232	10.94%	16991	35.54%
Aug-22	7193	15.04%	5223	72.61%	1995	27.74%	5269	11.02%	16990	35.52%
Sep-22	7214	15.06%	5200	72.08%	2017	27.96%	5254	10.97%	17019	35.52%
Oct-22	7221	15.07%	5225	72.36%	2023	28.02%	5281	11.02%	17006	35.49%
Nov-22	7257	15.05%	5274	72.67%	2023	27.88%	5315	11.02%	17049	35.36%
Dec-22	7293	15.03%	5271	72.27%	2025	27.77%	5382	11.09%	17065	35.17%
Jan-23	7344	15.10%	5304	72.22%	2057	28.01%	5402	11.10%	17064	35.08%
Feb-23	7403	15.16%	5335	72.07%	2085	28.16%	5432	11.12%	17107	35.02%
Mar-23	7471	15.20%	5381	72.03%	2093	28.01%	5525	11.24%	17124	34.83%
Apr-23	7464	15.18%	5387	72.17%	2080	27.87%	5534	11.26%	17111	34.80%
May-23	7334	14.98%	5297	72.23%	2064	28.14%	5402	11.03%	17138	35.00%
Jun-23	7329	14.89%	5266	71.85%	2066	28.19%	5394	10.96%	17185	34.91%
Jul-23	7387	14.96%	5326	72.10%	2100	28.43%	5448	11.03%	17201	34.83%
Aug-23	7400	14.96%	5292	71.51%	2110	28.51%	5477	11.07%	17221	34.82%
Sep-23	7392	14.89%	5286	71.51%	2107	28.50%	5514	11.11%	17239	34.73%
Oct-23	7486	14.98%	5352	71.49%	2144	28.64%	5607	11.22%	17249	34.53%
Nov-23	7552	14.98%	5390	71.37%	2163	28.64%	5693	11.29%	17282	34.28%
Dec-23	7528	14.92%	5372	71.36%	2157	28.65%	5671	11.24%	17293	34.28%
Jan-24	7517	14.89%	5364	71.36%	2175	28.93%	5690	11.27%	17281	34.24%

Overview of inmate age statistics, Jan-2000 to Jan-2024

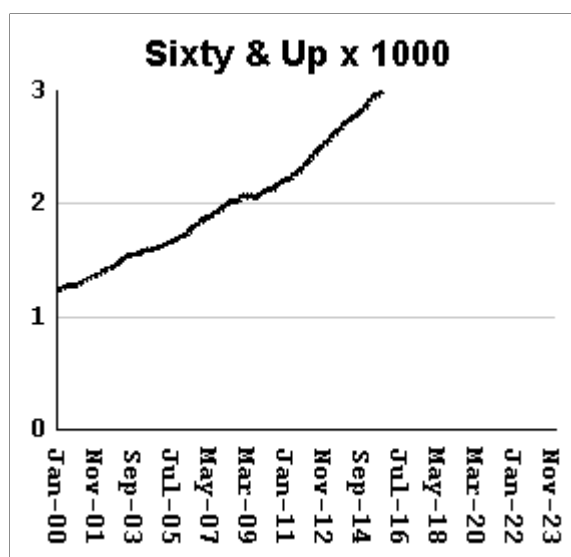
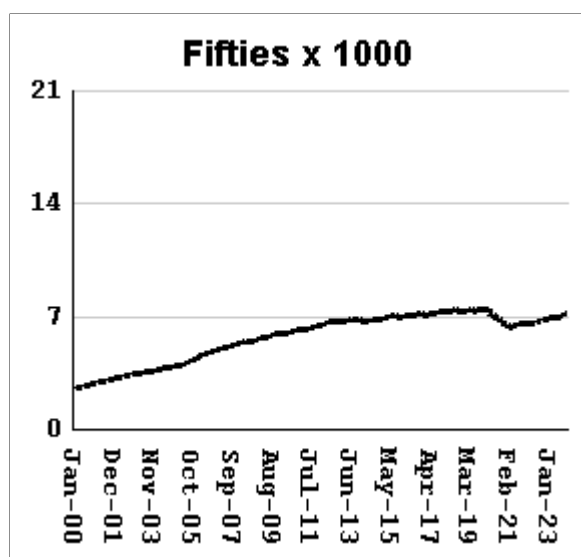
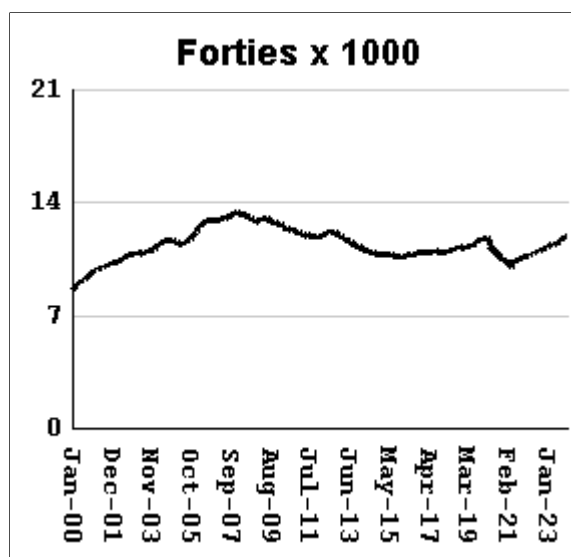
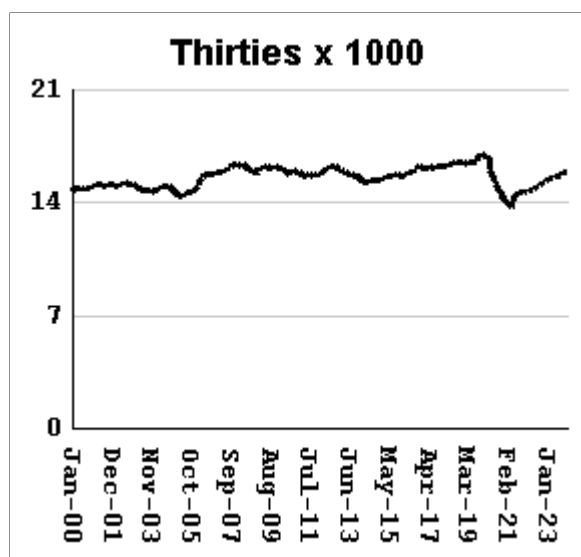
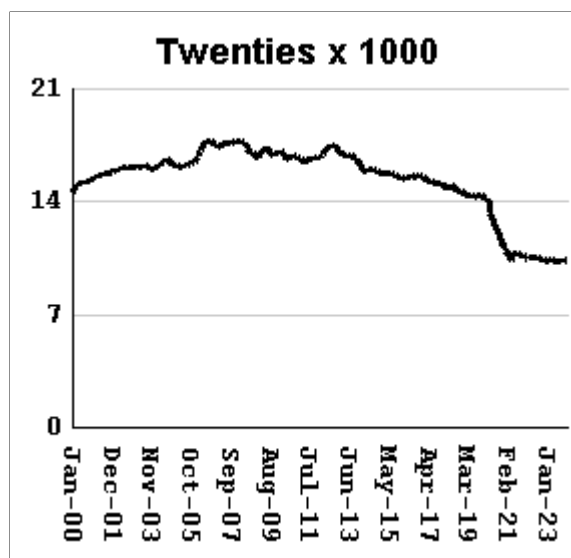
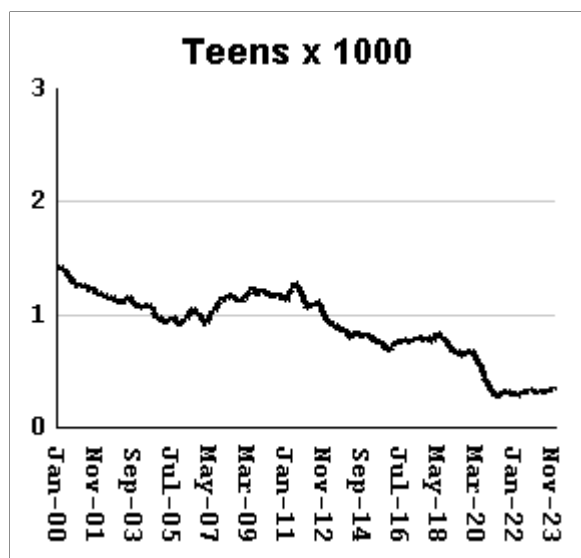
The "aging inmate population" is a concern in correctional systems throughout America, including Georgia. Here, the increase in inmate age is the result of several factors. Teenagers have been steered away from prison by increased usage of probation and other alternatives, at least for their first convictions. And there has been a surge of middle-aged male sex offenders due to the expanding "It's OK to tell" ethos. But most importantly, more severe sentence lengths and release policies have greatly increased the length of time that most offenders -- especially violent ones -- spend in prison, thereby increasing their average age.



Average age of active inmates	RISES BY	.03	from	41.35	to	41.38
Number in their teens	RISES BY	5	from	342	to	347
Percentage in their teens	RISES BY	.01%	from	.68%	to	0.69%
Number in their twenties	falls by	19	from	10,364	to	10,345
Percentage in their twenties	falls by	0.05%	from	20.55%	to	20.50%
Number in their thirties	RISES BY	74	from	15,847	to	15,921
Percentage in their thirties	RISES BY	0.13%	from	31.41%	to	31.54%
Number in their forties	RISES BY	12	from	11,906	to	11,918
Percentage in their forties	RISES BY	0.01%	from	23.60%	to	23.61%
Number in their fifties	RISES BY	31	from	7156	to	7,187
Percentage in their fifties	RISES BY	0.05%	from	14.19%	to	14.24%
Number age sixty and up	RISES BY	20	from	4830	to	4,850
Percentage age sixty and up	RISES BY	.04%	from	9.57%	to	9.61%

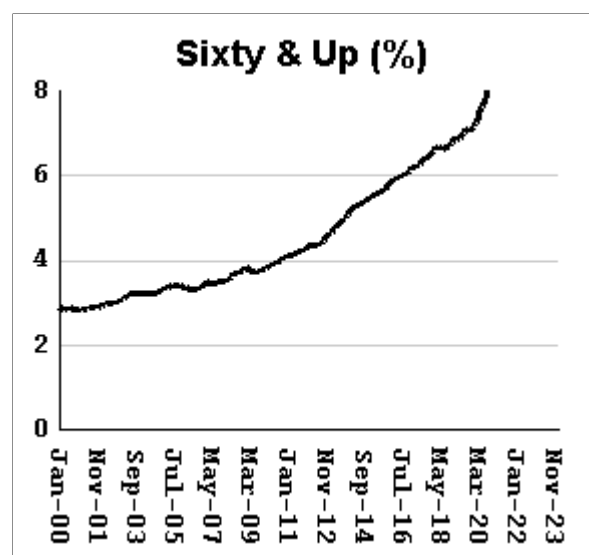
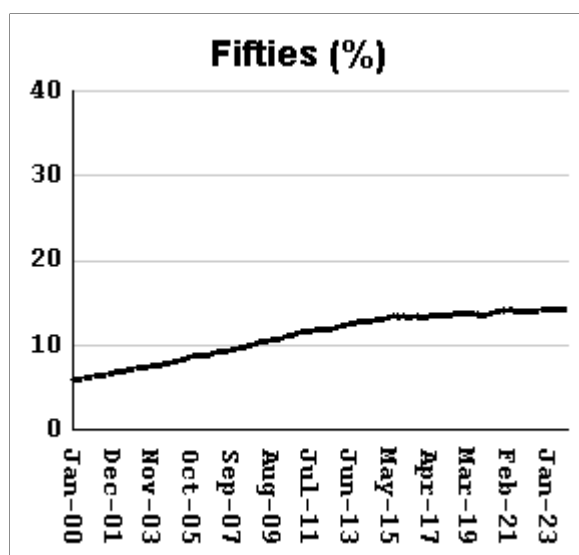
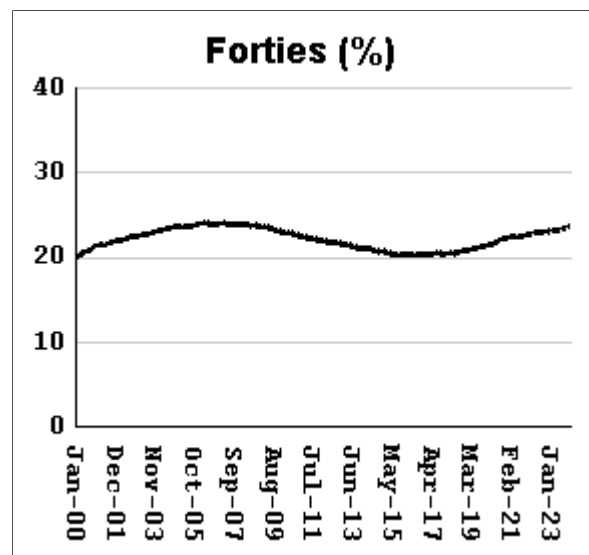
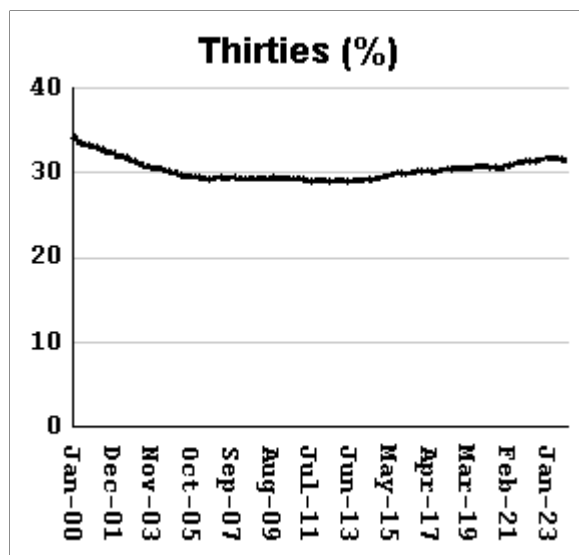
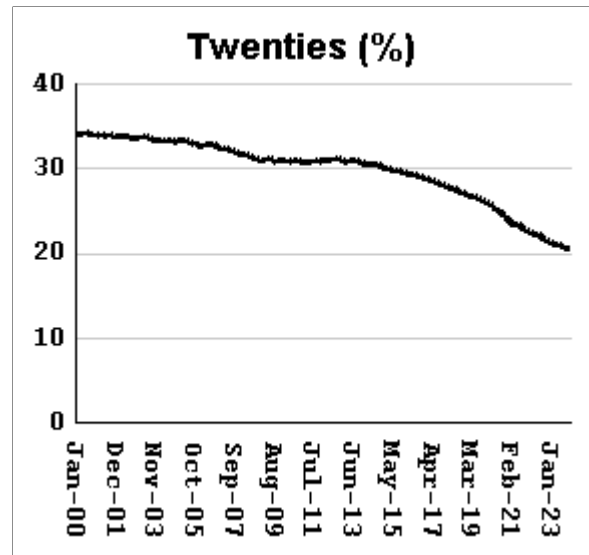
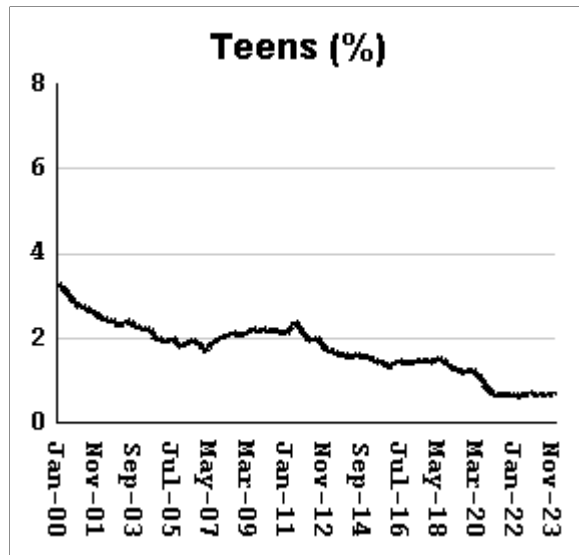
Monthly counts of inmates by age group, Jan-2000 to Jan-2024

Y-axis of Twenties/Thirties/Forties/Fifties runs from 0 to 21,000. Y-axis of Teens/Sixty+ runs from 0 to 3,000.



Monthly percentages of inmates by age group, Jan-2000 to Jan-2024

Y-axis of Twenties/Thirties/Forties/Fifties runs from 0% to 40%. Y-axis of Teens/Sixty+ runs from 0% to 8%

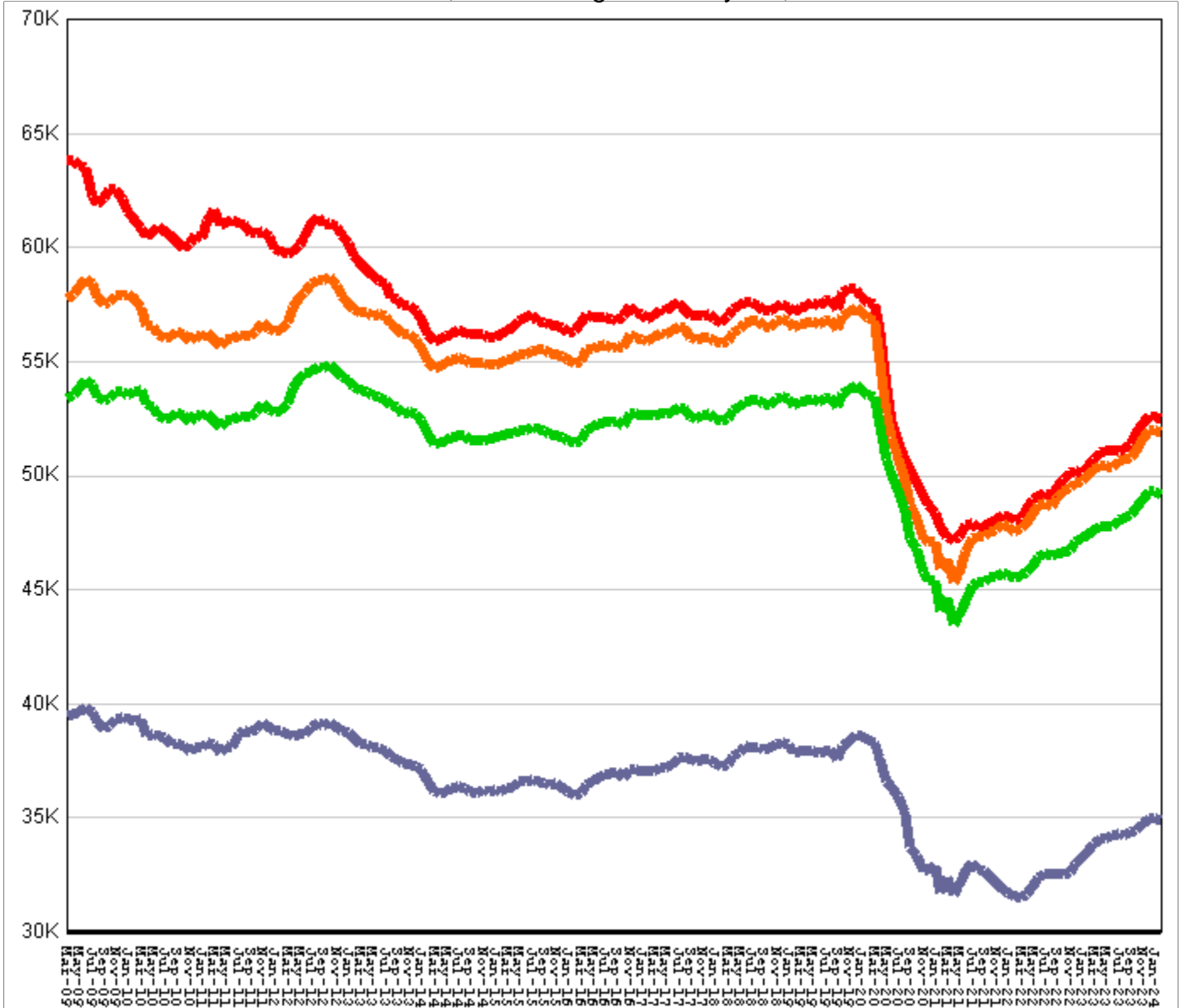


Inmate counts & percentages by age, for past 48 months

Month	Avg Age	Teens		Twenties		Thirties		Forties		Fifties		Sixty & Up	
		Num-ber	Per-cent	Num-ber	Per-cent	Num-ber	Per-cent	Num-ber	Per-cent	Num-ber	Per-cent	Num-ber	Per-cent
Feb-20	39.61	665	1.21%	14155	25.81%	16879	30.78%	11749	21.42%	7446	13.58%	3964	7.23%
Mar-20	39.68	641	1.18%	13924	25.67%	16670	30.74%	11630	21.44%	7402	13.65%	3983	7.34%
Apr-20	39.83	577	1.10%	13345	25.43%	16080	30.64%	11312	21.55%	7219	13.75%	3966	7.56%
May-20	39.87	562	1.09%	13113	25.34%	15842	30.61%	11203	21.65%	7121	13.76%	3931	7.60%
Jun-20	39.94	534	1.05%	12836	25.25%	15639	30.77%	11100	21.84%	7029	13.83%	3916	7.70%
Jul-20	40.07	480	0.96%	12401	24.92%	15195	30.53%	10897	21.90%	6921	13.91%	3884	7.80%
Aug-20	40.14	440	0.90%	12139	24.79%	14916	30.47%	10781	22.02%	6831	13.95%	3867	7.90%
Sep-20	40.2	418	0.86%	11929	24.68%	14814	30.65%	10718	22.17%	6789	14.05%	3876	8.02%
Oct-20	40.28	390	0.82%	11615	24.35%	14555	30.52%	10579	22.18%	6702	14.05%	3862	8.10%
Nov-20	40.41	352	0.76%	11179	24.05%	14194	30.53%	10353	22.27%	6572	14.14%	3852	8.29%
Dec-20	40.38	340	0.72%	11377	24.10%	14452	30.61%	10511	22.26%	6632	14.05%	3908	8.28%
Jan-21	40.49	304	0.66%	10953	23.85%	14064	30.62%	10264	22.35%	6469	14.08%	3887	8.46%
Feb-21	40.53	291	0.64%	10798	23.76%	14076	30.98%	10263	22.58%	6424	14.14%	3872	8.52%
Mar-21	40.57	296	0.65%	10671	23.51%	14004	30.85%	10173	22.41%	6372	14.04%	3886	8.56%
Apr-21	40.69	272	0.61%	10320	23.28%	13645	30.77%	9962	22.47%	6280	14.16%	3869	8.73%
May-21	40.62	290	0.64%	10587	23.45%	14023	31.06%	10174	22.53%	6372	14.11%	3922	8.69%
Jun-21	40.59	307	0.67%	10782	23.49%	14249	31.04%	10280	22.39%	6451	14.05%	3978	8.66%
Jul-21	40.58	316	0.68%	10858	23.35%	14433	31.04%	10384	22.33%	6496	13.97%	4021	8.65%
Aug-21	40.61	317	0.68%	10803	23.16%	14531	31.15%	10472	22.45%	6516	13.97%	4044	8.67%
Sep-21	40.64	316	0.68%	10744	22.97%	14602	31.22%	10495	22.44%	6525	13.95%	4099	8.76%
Oct-21	40.68	298	0.64%	10645	22.75%	14654	31.31%	10574	22.59%	6529	13.95%	4109	8.78%
Nov-21	40.7	298	0.64%	10633	22.66%	14711	31.36%	10651	22.70%	6537	13.93%	4125	8.79%
Dec-21	40.72	302	0.64%	10604	22.54%	14739	31.33%	10689	22.72%	6570	13.96%	4153	8.83%
Jan-22	40.78	293	0.63%	10481	22.45%	14646	31.37%	10642	22.79%	6575	14.08%	4160	8.91%
Feb-22	40.8	298	0.64%	10482	22.43%	14683	31.42%	10667	22.83%	6574	14.07%	4180	8.95%
Mar-22	40.8	295	0.63%	10531	22.35%	14775	31.36%	10730	22.77%	6585	13.98%	4209	8.93%
Apr-22	40.83	285	0.60%	10524	22.30%	14769	31.30%	10786	22.86%	6607	14.00%	4225	8.95%
May-22	40.86	281	0.59%	10508	22.24%	14822	31.37%	10819	22.90%	6608	13.99%	4261	9.02%
Jun-22	40.85	306	0.64%	10594	22.22%	14937	31.32%	10929	22.92%	6639	13.92%	4288	8.99%
Jul-22	40.89	315	0.66%	10549	22.07%	14980	31.33%	10971	22.95%	6681	13.98%	4315	9.03%
Aug-22	40.92	318	0.66%	10518	21.99%	15027	31.42%	11013	23.03%	6717	14.04%	4357	9.11%
Sep-22	40.97	315	0.66%	10436	21.78%	15049	31.41%	10984	22.92%	6744	14.08%	4390	9.16%
Oct-22	40.99	322	0.67%	10377	21.65%	15135	31.58%	11038	23.03%	6759	14.10%	4407	9.20%
Nov-22	41.01	333	0.69%	10401	21.57%	15239	31.61%	11140	23.11%	6807	14.12%	4452	9.23%
Dec-22	41.04	339	0.70%	10363	21.35%	15323	31.58%	11163	23.00%	6859	14.13%	4485	9.24%
Jan-23	41.07	327	0.67%	10341	21.26%	15404	31.67%	11201	23.03%	6879	14.14%	4528	9.31%
Feb-23	41.1	316	0.65%	10344	21.18%	15471	31.67%	11292	23.12%	6883	14.09%	4579	9.37%
Mar-23	41.09	316	0.64%	10397	21.15%	15562	31.65%	11380	23.15%	6932	14.10%	4580	9.32%
Apr-23	41.12	306	0.62%	10388	21.13%	15564	31.66%	11389	23.16%	6935	14.10%	4588	9.33%
May-23	41.14	312	0.64%	10343	21.12%	15568	31.79%	11365	23.21%	6928	14.15%	4603	9.40%
Jun-23	41.17	313	0.64%	10316	20.96%	15632	31.76%	11396	23.15%	6946	14.11%	4625	9.40%
Jul-23	41.21	319	0.65%	10328	20.91%	15703	31.80%	11507	23.30%	6984	14.14%	4661	9.44%
Aug-23	41.27	305	0.62%	10283	20.79%	15641	31.62%	11541	23.33%	6986	14.12%	4707	9.52%
Sep-23	41.28	315	0.63%	10298	20.75%	15660	31.55%	11603	23.38%	7011	14.13%	4744	9.56%
Oct-23	41.3	332	0.66%	10311	20.64%	15768	31.56%	11731	23.48%	7059	14.13%	4792	9.59%
Nov-23	41.32	333	0.66%	10401	20.63%	15869	31.48%	11861	23.53%	7125	14.13%	4828	9.58%
Dec-23	41.35	342	0.68%	10364	20.55%	15847	31.41%	11906	23.60%	7156	14.19%	4830	9.57%
Jan-24	41.38	347	0.69%	10345	20.50%	15921	31.54%	11918	23.61%	7187	14.24%	4850	9.61%

All housed offenders under GDC jurisdiction

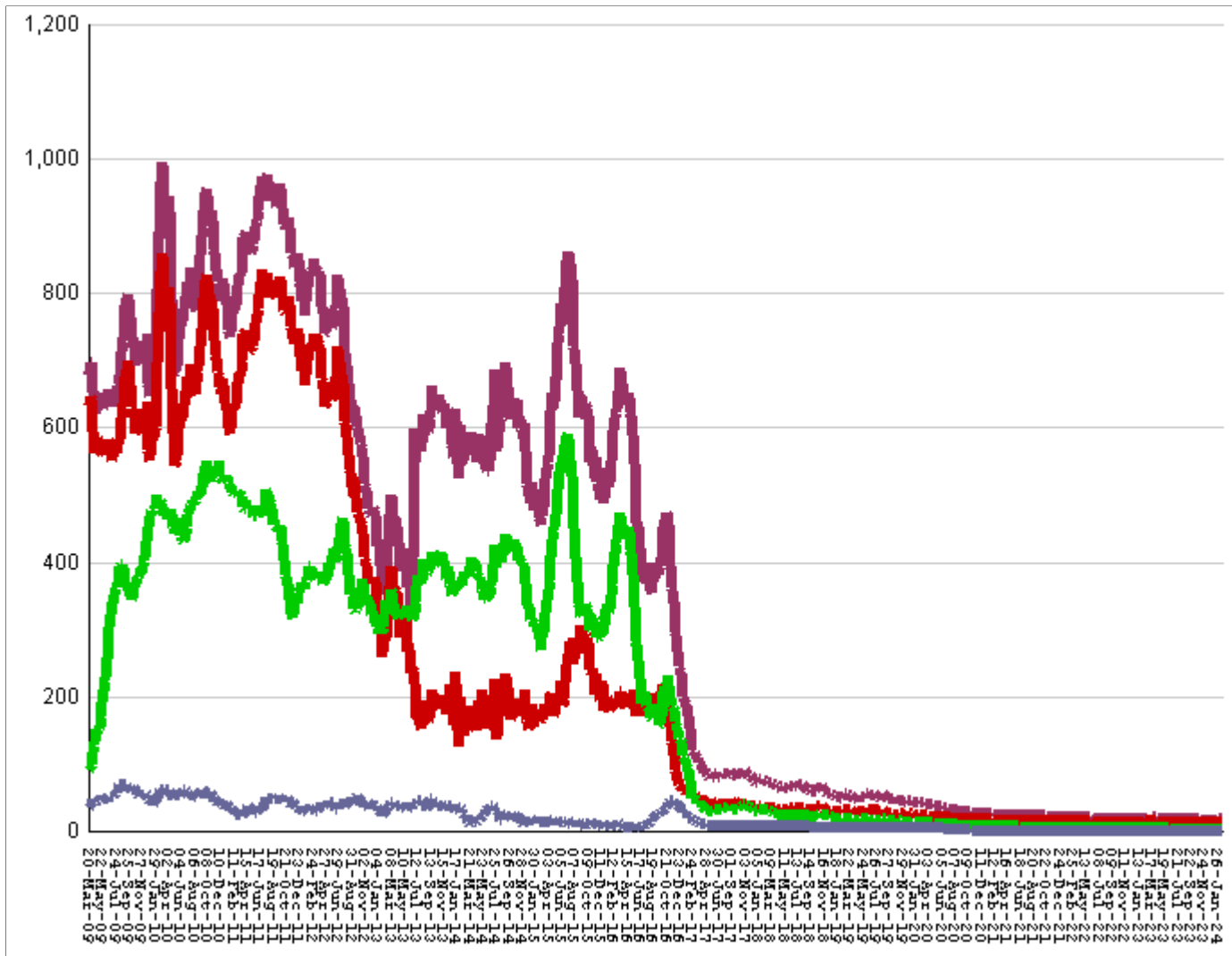
March 20, 2009 through February 23, 2024



All in bed + probs in jail + backlog	RISE BY	13	from	52,525	to	52,538
Probationers in jail	18	at	18
Inmate jail backlog	RISES BY	22	from	598	to	620
All in beds: inmate + Prob + parole	fall by	9	from	51,909	to	51,900
Total probationers in beds	RISE BY	20	from	2,749	to	2,769
Probation detention centers	RISE BY	3	from	1,343	to	1,346
Probation boot camps	fall by		from		to	
Probation RSAT	RISE BY	17	from	1406	to	1,423
Parole revocation centers	fall by		from		to	
All in inmate beds: state + other	fall by	29	from	49,160	to	49,131
Other inmate facilities :	fall by	9	from	14,285	to	14,276
Inmate boot camps	0	at	0
Private prisons	RISE BY	8	from	7572	to	7,580
County prisons	fall by	27	from	4508	to	4,481
Transitional centers	RISE BY	10	from	2205	to	2,215
In state prisons only	fall by	20	from	34,875	to	34,855

Probationers in jail awaiting placement in facilities

March 20, 2009 through February 23, 2024



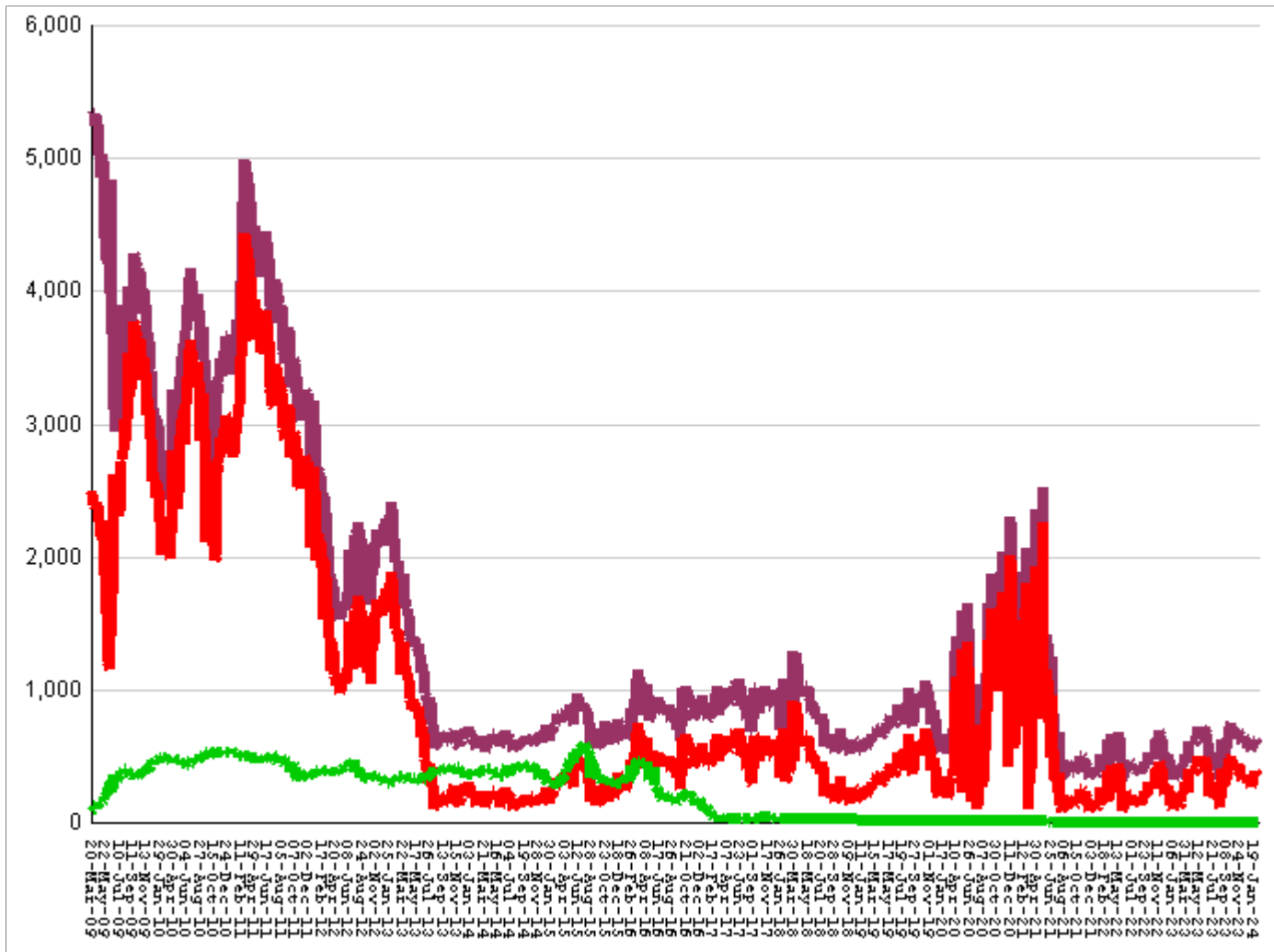
This graph shows, for each Friday since March 20 2009, the number of sentenced felony probationers who were waiting in jail for placement in facilities that GDC operates for housing probationers -- detention centers, probation residential substance abuse treatment (RSAT) centers, and probation boot camps. Counts include both those offenders sentenced directly from court, and those whose street probation was revoked.

Total probationers waiting in jail	level	at	18
... waiting for detention centers	level	at	14
... waiting for probation RSAT	level	at	3
... waiting for probation boot camps	level	at	1

The highest number of probationers waiting in jail was	994	on	05-MAR-10
... highest number waiting for detention centers was	859	on	05-MAR-10
... highest number waiting for probation RSAT was	592	on	10-JUL-15
... highest number waiting for probation boot camps was	70	on	18-SEP-09

State inmates in jail awaiting placement in facilities

March 20, 2009 through February 23, 2024



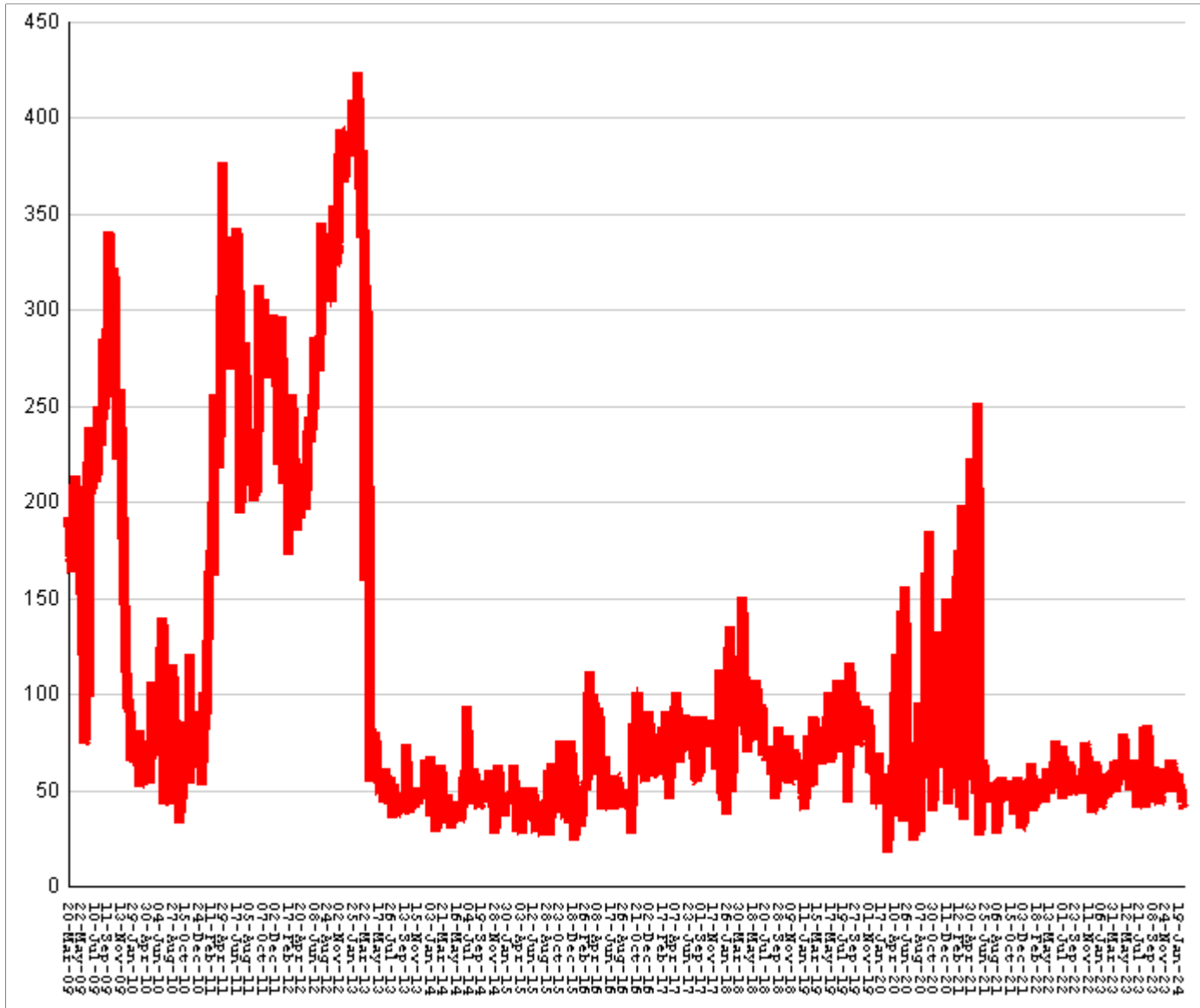
This graph shows, for each Friday since March 2009, the number of prisoners, probationers, and parolees in local jails who have been sentenced or revoked to state prison and whose documents have been received and verified by GDC. Most are almost immediately assigned to a diagnostic center, and are designated as in "admission processing". Of those a few hundred may be in the "transportation delayed" category because there is no room in the assigned diagnostic center, or because the inmate is being held for medical reasons, or for other court proceedings, or other reasons. Those remaining are "ready to be picked up".

Total state inmates waiting in jail	RISE BY	22	from	598	to	620
... not yet assigned to a diagnostic center	fall by	1	from	36	to	35
... total "in admission processing"	RISE BY	23	from	562	to	585
... with "transportation delayed"	fall by	3	from	199	to	196
... ready to be picked up	RISE BY	26	from	363	to	389

The highest number of state inmates waiting in jail was	5338	on	27-MAR-09
... highest number not asg to a diagnostic center was	2881	on	12-JUN-09
... highest number in admission processing was	4916	on	25-MAR-11
... highest number with transportation delayed was	645	on	14-JAN-11
... highest number ready to be pickup was	4435	on	25-MAR-11

Female state inmates in jail awaiting pickup

March 20, 2009 through February 23, 2024



This graph shows, for each Friday since March 2009, the number of female state prisoners in local jails who were assigned to diagnostic centers but had not yet been picked up.

Female state inmates in jails waiting picked up	RISE BY	10	from	43	to	53
The highest number of female inmates waiting in jail was		424	on	01-FEB-13		
The lowest number of female inmates waiting in jail was		17	on	20-MAR-20		

Summary of housed prisoners, parolees, and probationers

Week ending	Prison	Parole	Probation			Prison+parole+probation	Jail		Total
	Total inmates	Revocation centers	Prob RSAT	Boot camp	Detention		Inmate backlog	Probationers	Prison+parole+probation+jail
03-Mar-2023	47519		1524		1114	50157	443	19	50619
10-Mar-2023	47533		1505		1081	50119	432	20	50571
17-Mar-2023	47598		1557		1101	50256	433	19	50708
24-Mar-2023	47637		1598		1048	50283	484	20	50787
31-Mar-2023	47798		1572		1091	50461	518	20	50999
07-Apr-2023	47709		1551		1111	50371	584	20	50975
14-Apr-2023	47660		1573		1093	50326	579	20	50925
21-Apr-2023	47659		1577		1079	50315	610	19	50944
28-Apr-2023	47834		1584		1086	50504	599	19	51122
05-May-2023	47780		1531		1092	50403	628	19	51050
12-May-2023	47668		1568		1114	50350	657	19	51026
19-May-2023	47804		1601		1108	50513	643	19	51175
26-May-2023	47740		1548		1102	50390	717	19	51126
02-Jun-2023	47646		1535		1118	50299	678	19	50996
09-Jun-2023	47610		1489		1130	50229	671	19	50919
16-Jun-2023	47620		1522		1150	50292	705	18	51015
23-Jun-2023	47727		1481		1152	50360	694	18	51072
30-Jun-2023	47959		1411		1183	50553	713	18	51284
07-Jul-2023	47942		1380		1181	50503	526	18	51047
14-Jul-2023	48007		1383		1163	50553	445	18	51016
21-Jul-2023	48125		1375		1184	50684	464	18	51166
28-Jul-2023	48154		1413		1202	50769	415	18	51202
04-Aug-2023	48140		1379		1206	50725	411	18	51154
11-Aug-2023	48103		1414		1187	50704	332	18	51054
18-Aug-2023	48177		1299		1198	50674	397	18	51089
25-Aug-2023	48136		1323		1202	50661	522	18	51201
01-Sep-2023	48202		1307		1215	50724	630	18	51372
08-Sep-2023	48156		1305		1205	50666	540	18	51224
15-Sep-2023	48208		1297		1224	50729	507	18	51254
22-Sep-2023	48259		1312		1203	50774	565	18	51357
29-Sep-2023	48412		1327		1161	50900	627	18	51545
06-Oct-2023	48407		1305		1203	50915	704	18	51637
13-Oct-2023	48543		1313		1221	51077	642	18	51737
20-Oct-2023	48597		1312		1232	51141	725	18	51884
27-Oct-2023	48698		1328		1235	51261	742	18	52021
03-Nov-2023	48781		1298		1265	51344	688	18	52050
10-Nov-2023	48909		1389		1244	51542	662	17	52221
17-Nov-2023	49061		1357		1274	51692	645	17	52354
24-Nov-2023	49087		1424		1262	51773	694	17	52484
01-Dec-2023	49237		1401		1265	51903	621	17	52541
08-Dec-2023	49227		1387		1266	51880	593	17	52490
15-Dec-2023	49240		1410		1263	51913	631	17	52561
22-Dec-2023	49353		1411		1276	52040	634	17	52691
29-Dec-2023	49410		1374		1227	52011	652	17	52680
05-Jan-2024	49392		1405		1237	52034	534	17	52585
12-Jan-2024	49307		1402		1219	51928	567	17	52512
19-Jan-2024	49259		1398		1255	51912	604	17	52533
26-Jan-2024	49243		1425		1273	51941	603	17	52561
02-Feb-2024	49176		1411		1327	51914	614	18	52546
09-Feb-2024	49108		1408		1335	51851	577	18	52446
16-Feb-2024	49160		1406		1343	51909	598	18	52525
23-Feb-2024	49131		1423		1346	51900	620	18	52538

Offenders housed in facilities for state prisoners

Week ending	In state prisons	In facilities other than state prisons						Total Inmates
		Transition centers	County prisons	Pre-rel centers	Private prisons	Inmate boot camps	Total others	
03-Mar-2023	33701	2184	4579		7054	1	13818	47519
10-Mar-2023	33777	2183	4537		7035	1	13756	47533
17-Mar-2023	33873	2187	4511		7026	1	13725	47598
24-Mar-2023	33889	2205	4545		6997	1	13748	47637
31-Mar-2023	34007	2231	4570		6989	1	13791	47798
07-Apr-2023	33971	2214	4571		6952	1	13738	47709
14-Apr-2023	33982	2160	4575		6942	1	13678	47660
21-Apr-2023	34063	2143	4536		6916	1	13596	47659
28-Apr-2023	34156	2160	4616		6901	1	13678	47834
05-May-2023	34134	2110	4645		6890	1	13646	47780
12-May-2023	33978	2190	4615		6884	1	13690	47668
19-May-2023	34127	2233	4555		6888	1	13677	47804
26-May-2023	34113	2231	4506		6889	1	13627	47740
02-Jun-2023	34064	2218	4477		6886	1	13582	47646
09-Jun-2023	34152	2191	4393		6873	1	13458	47610
16-Jun-2023	34202	2186	4352		6879	1	13418	47620
23-Jun-2023	34273	2191	4387		6875	1	13454	47727
30-Jun-2023	34378	2216	4468		6896	1	13581	47959
07-Jul-2023	34264	2185	4514		6978	1	13678	47942
14-Jul-2023	34225	2198	4468		7115	1	13782	48007
21-Jul-2023	34267	2199	4508		7150	1	13858	48125
28-Jul-2023	34265	2195	4519		7174	1	13889	48154
04-Aug-2023	34216	2213	4551		7159	1	13924	48140
11-Aug-2023	34180	2201	4578		7143	1	13923	48103
18-Aug-2023	34269	2197	4544		7167	0	13908	48177
25-Aug-2023	34271	2189	4509		7167	0	13865	48136
01-Sep-2023	34340	2192	4515		7155	0	13862	48202
08-Sep-2023	34349	2191	4448		7168	0	13807	48156
15-Sep-2023	34290	2191	4484		7243	0	13918	48208
22-Sep-2023	34364	2207	4420		7268	0	13895	48259
29-Sep-2023	34465	2210	4360		7377	0	13947	48412
06-Oct-2023	34422	2203	4338		7444	0	13985	48407
13-Oct-2023	34465	2209	4339		7530	0	14078	48543
20-Oct-2023	34460	2198	4366		7573	0	14137	48597
27-Oct-2023	34493	2204	4406		7595	0	14205	48698
03-Nov-2023	34562	2208	4404		7607	0	14219	48781
10-Nov-2023	34700	2202	4415		7592	0	14209	48909
17-Nov-2023	34818	2207	4431		7605	0	14243	49061
24-Nov-2023	34833	2191	4450		7613	0	14254	49087
01-Dec-2023	34916	2209	4494		7617	1	14321	49237
08-Dec-2023	34883	2216	4485		7642	1	14344	49227
15-Dec-2023	34920	2206	4503		7610	1	14320	49240
22-Dec-2023	34948	2235	4522		7647	1	14405	49353
29-Dec-2023	34970	2234	4530		7676	0	14440	49410
05-Jan-2024	34991	2232	4509		7660	0	14401	49392
12-Jan-2024	34944	2226	4532		7605	0	14363	49307
19-Jan-2024	34914	2219	4528		7598	0	14345	49259
26-Jan-2024	34920	2233	4519		7571	0	14323	49243
02-Feb-2024	34889	2224	4509		7554	0	14287	49176
09-Feb-2024	34842	2208	4485		7573	0	14266	49108
16-Feb-2024	34875	2205	4508		7572	0	14285	49160
23-Feb-2024	34855	2215	4481		7580	0	14276	49131

Offenders waiting in local jails for state facilities

Week ending	Probationers waiting in jail				State prisoners wating in jail					Assigned females
	.. for PDCs	.. for RSAT	.. for boot camps	Total	Total backlog	Not yet assigned	In adm process	Delayed transport	Ready for pickup	
03-Mar-2023	15	4	0	19	443	30	413	189	224	49
10-Mar-2023	16	4	0	20	432	29	403	178	225	50
17-Mar-2023	15	4	0	19	433	30	403	181	222	59
24-Mar-2023	15	4	1	20	484	29	455	181	274	65
31-Mar-2023	15	4	1	20	518	31	487	184	303	56
07-Apr-2023	15	4	1	20	584	30	554	188	366	56
14-Apr-2023	15	4	1	20	579	29	550	191	359	55
21-Apr-2023	14	4	1	19	610	27	583	188	395	66
28-Apr-2023	14	4	1	19	599	28	571	192	379	61
05-May-2023	14	4	1	19	628	27	601	191	410	79
12-May-2023	14	4	1	19	657	29	628	189	439	62
19-May-2023	14	4	1	19	643	27	616	190	426	56
26-May-2023	14	4	1	19	717	28	689	193	496	68
02-Jun-2023	14	4	1	19	678	26	652	197	455	54
09-Jun-2023	14	4	1	19	671	27	644	194	450	52
16-Jun-2023	14	3	1	18	705	26	679	199	480	59
23-Jun-2023	14	3	1	18	694	27	667	208	459	50
30-Jun-2023	14	3	1	18	713	27	686	203	483	66
07-Jul-2023	14	3	1	18	526	27	499	203	296	49
14-Jul-2023	14	3	1	18	445	26	419	204	215	41
21-Jul-2023	14	3	1	18	464	26	438	200	238	46
28-Jul-2023	14	3	1	18	415	26	389	192	197	54
04-Aug-2023	14	3	1	18	411	26	385	196	189	41
11-Aug-2023	14	3	1	18	332	26	306	192	114	41
18-Aug-2023	14	3	1	18	397	26	371	194	177	58
25-Aug-2023	14	3	1	18	522	27	495	197	298	83
01-Sep-2023	14	3	1	18	630	27	603	199	404	62
08-Sep-2023	14	3	1	18	540	27	513	203	310	43
15-Sep-2023	14	3	1	18	507	27	480	206	274	51
22-Sep-2023	14	3	1	18	565	26	539	205	334	64
29-Sep-2023	14	3	1	18	627	26	601	203	398	84
06-Oct-2023	14	3	1	18	704	26	678	211	467	55
13-Oct-2023	14	3	1	18	642	28	614	213	401	42
20-Oct-2023	14	3	1	18	725	31	694	214	480	58
27-Oct-2023	14	3	1	18	742	31	711	214	497	51
03-Nov-2023	14	3	1	18	688	33	655	221	434	48
10-Nov-2023	13	3	1	17	662	32	630	225	405	60
17-Nov-2023	13	3	1	17	645	34	611	223	388	61
24-Nov-2023	13	3	1	17	694	33	661	221	440	53
01-Dec-2023	13	3	1	17	621	37	584	233	351	49
08-Dec-2023	13	3	1	17	593	41	552	231	321	53
15-Dec-2023	13	3	1	17	631	40	591	237	354	65
22-Dec-2023	13	3	1	17	634	40	594	241	353	66
29-Dec-2023	13	3	1	17	652	40	612	243	369	60
05-Jan-2024	13	3	1	17	534	40	494	236	258	53
12-Jan-2024	13	3	1	17	567	39	528	225	303	62
19-Jan-2024	13	3	1	17	604	36	568	215	353	59
26-Jan-2024	13	3	1	17	603	37	566	205	361	52
02-Feb-2024	14	3	1	18	614	37	577	208	369	50
09-Feb-2024	14	3	1	18	577	37	540	197	343	41
16-Feb-2024	14	3	1	18	598	36	562	199	363	43
23-Feb-2024	14	3	1	18	620	35	585	196	389	53