

# Friday Report – overview and contents

The pages in The Friday Report are about adult offenders in Georgia's prisons and jails. They contain statistical snapshots and trends in the populations and movements of offenders in the state prison system, on probation, on parole, and in local jails. Information comes from databases of the Georgia Department of Corrections (GDC) and the Board of Pardons and Paroles, and from data provided by local jailers. Information is summarized into tables in the GDC/Parole Data Warehouse, and is extracted into these pages each Friday. Pages are organized according to the table that supplied the data.

The Monthly Research Table, named "MO_RESRCH" or simply "MO", contains data about state prisoners, grouped into statistically interesting categories. The table contains one record per month, from January 2000 to the present. Despite its being "monthly", it is updated weekly, because some data trickles in for several weeks before it becomes stable history.	
Page	Contents
MO-01	Clemencies and maxouts. Monthly graph from 2000 to present shows the monthly departures from prison via actions by the Georgia Parole Board (clemencies), and via service of 100% of the court ordered sentence (maxouts)
MO-02	48 months of releases. Table shows counts and percentages of releases via clemencies and maxouts, with and without probation to follow, for each of the past 48 months.
MO-03	Methamphetamine. Monthly graph from 2000 to present shows admissions, departures, population, and percent of population of inmates with a current offense of methamphetamine possession, sale, manufacturing, or trafficking, and the changing racial composition of the methamphetamine population.
MO-04	Non-violent first incarcerants. Monthly graph from 2000 to present shows admissions, departures, population, and percent of population of inmates without violent or sex crimes, who are serving their first Georgia felony incarceration.
MO-05	Seven Deadly Sins. Monthly graph from 2000 to present shows admissions, departures, population, and percent of population of inmates convicted of kidnapping, armed robbery, rape, aggravated sodomy, aggravated sexual battery, and aggravated child molestation, for whom especially severe penalties are prescribed.
MO-06	48 months of inmate subpopulations. Table shows number and percentage of white and non-white inmates with methamphetamine offenses, and non-violent first incarcerants, and inmates convicted of the Seven Deadly Sins.
MO-07	Inmate age overview. Line graph shows the average age of the inmate population, by month from 2000 to the present. Pie chart shows the number of currently active inmates in their teens, twenties, thirties, forties, fifties, and age sixty+.
MO-08	Counts by age group. Graphs show the count, by month from 2000 to the present, of inmates in their teens, twenties, thirties, forties, fifties, and age sixty+.
MO-09	Percentages by age group. Graphs show the <i>percentages</i> , by month from 2000 to the present, of inmates in their teens, twenties, thirties, forties, fifties, and age sixty+.
MO-10	48 months of inmate ages. Table shows average age of the standing population, and counts and percentages of teens, twenties, thirties, forties, fifties, and sixty+, for each of the past 48 months.

# Friday Report – overview and contents (*continued*)

The MSR Table is based on the Management Summary Report (MSR), a snapshot report posted each week in GDC's Scribe database. MSR_RESRCH gathers that data into weekly trends, with one record for each Friday since March 20th, 2009.	
Page	Contents
MSR-01	All housed offenders. Weekly graph from March 20, 2009 to present, showing counts of inmates in state prisons, transitional centers, county prisons, private prisons, inmate boot camps, parole revocation centers, probation Residential Substance Abuse Treatment (RSAT), probation boot camps, probation detention centers, plus the inmate jail backlog and probationers in jail waiting for state facilities.
MSR-02	Probationers in jail. Weekly graph from March 20, 2009 to present, showing counts of probationers in local jails awaiting placement in probation detention centers, probation RSAT centers, and probation boot camps.
MSR-03	State inmates in jail. Weekly graph from March 20, 2009 to present, showing counts of state inmates in local jails awaiting placement in state prison facilities – including those who have not yet been assigned to a diagnostic center, those whose transportation has been delayed for some reason, and those who are ready to be picked up.
MSR-04	Female state inmates in jail. Weekly graph from March 20, 2009 to present, showing counts of female state inmates awaiting placement in a state prison for females.
MSR-05	52-week table: housed offenders. Data for each of the past 52 weeks, showing total prison inmates, parolees in revocation centers, probationers in RSAT/boot camp/detention centers, inmate jail backlog, probationers in jail waiting for facilities, with subtotals.
MSR-06	52-week table: state prisoners. Data for each of the past 52 weeks, showing inmates in state prisons, transition centers, county prisons, pre-release centers, private prisons, and inmate boot camps, with subtotals.
MSR-07	52-week table: waiting in jail. Data for each of the past 52 weeks, showing probationers waiting for detention centers, RSAT, and boot camp; and state prisoners not yet assigned to diagnostic centers, in admission process, with delayed transport, and ready for pickup, with subtotals.

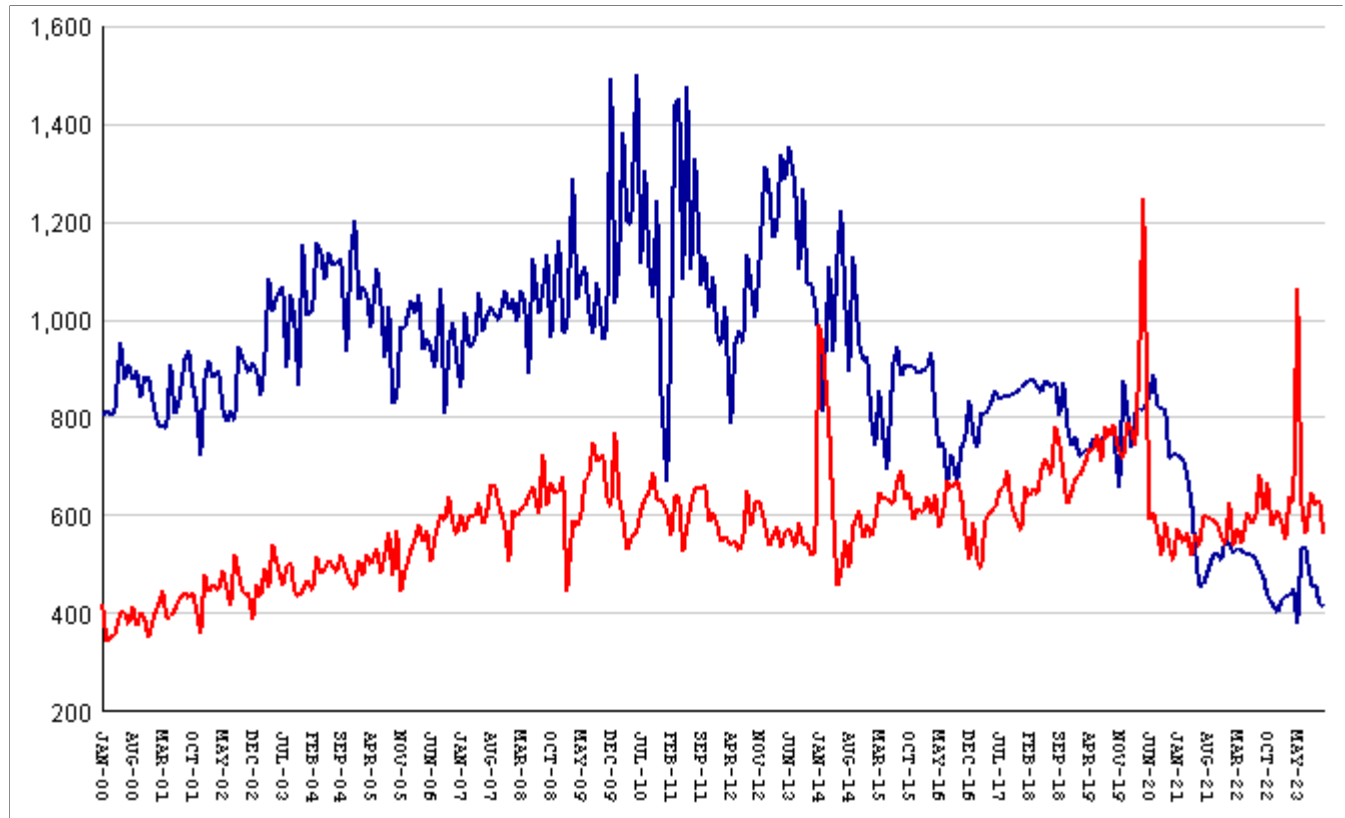
The DCA table consists mainly of data submitted from each of Georgia's 140+ local jails, via the Georgia Crime Information Center (GCIC) to the Georgia Department of Community Affairs (DCA), which publishes its [County Jail Inmate Population Report](#) on its web site each month. GDC has collected summary statewide data from this report every month since its inception in January, 1993. The table also contains the inmate jail backlog as computed by GDC for the last Friday of each month, for comparison with the jailers' count of state inmates. Although nominally a monthly table, DCA\_RESRCH is updated weekly to insure that the DCA data is correctly synchronized with the GDC jail backlog data.

Page	Contents
DCA-01	Jail composition. Monthly graph from 1993 to the present shows trends in the numbers of unsentenced inmates, state inmates, county inmates, and other inmates.
DCA-02	Two views of jail backlog. Monthly graph from 1993 to present compares jailers' count of "state inmates" with GDC's count of the "inmate jail backlog", and explains that both are valid counts of different phenomena.
DCA-03	48-month table: local jails. Data from Georgia jailers for each of the past 48 months, showing total jail population, capacity, utilization, and number and percent of unsentenced inmates, state inmates, county inmates, and other inmates.

## Releases by clemency and maxout, Jan-2000 to Nov-2023

There are two main ways of being released from a Georgia prison -- by actions of the Board of Pardons and Paroles ("Clemencies") and by service of 100% of the court-ordered sentences ("Maxouts"). "Clemency" includes paroles, reprieves, commutations, and transfer to other confinement prior to expiration of sentence.

"Other Releases" includes deaths, and sentences modified or overturned by the courts. Clemencies and maxouts may or may not be followed by periods of probation.



A. Clemency with probation to follow	falls by	6	from	363	to	357
B. Clemency only	RISES BY	3	from	52	to	55
C. Maxout with probation to follow	falls by	82	from	579	to	497
D. Maxout only (unsupervised)	RISES BY	12	from	52	to	64
E. Other releases	falls by	12	from	31	to	19
F. Total releases (A+B+C+D+E)	falls by	85	from	1077	to	992
<b>G. Total clemencies (A+B) (top line)</b>	<b>falls by</b>	<b>3</b>	<b>from</b>	<b>415</b>	<b>to</b>	<b>412</b>
<b>H. Total maxouts(C+D) (bottom line)</b>	<b>falls by</b>	<b>70</b>	<b>from</b>	<b>631</b>	<b>to</b>	<b>561</b>
I. % of releases by clemency (G/F)	RISES BY	3%	from	38.53%	to	41.53%
J. % of releases by maxout (H/F)	falls by	2.04%	from	58.59%	to	56.55%
K. Supervised releases (A+B+C)	falls by	85	from	994	to	909
L. % unsupervised releases (D/F)	RISES BY	1.62%	from	4.83%	to	6.45%
M. % supervised releases (K/F)	falls by	.66%	from	92.29%	to	91.63%

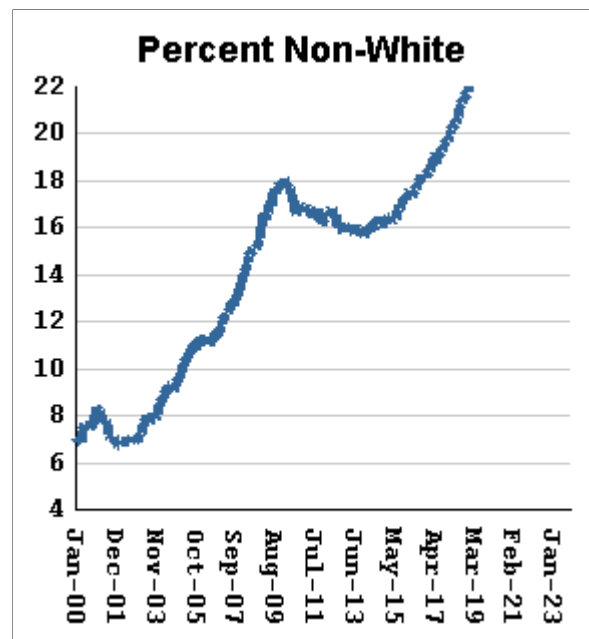
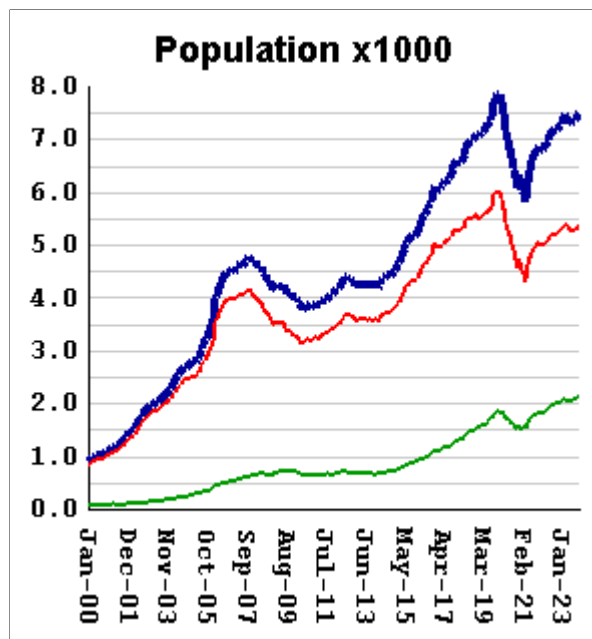
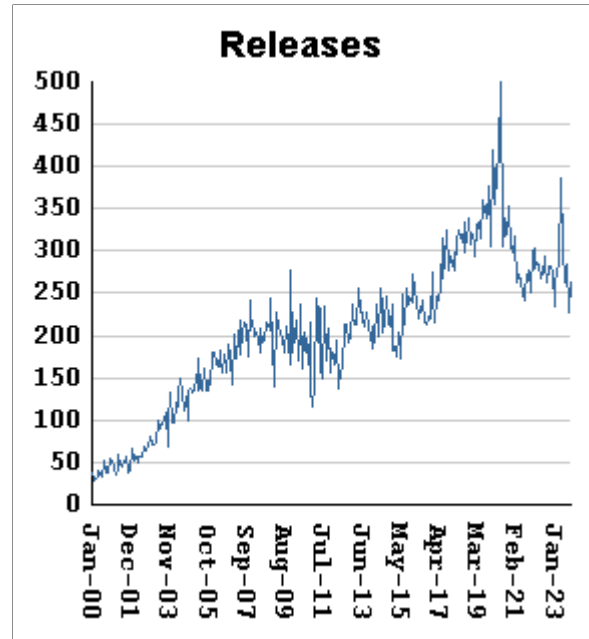
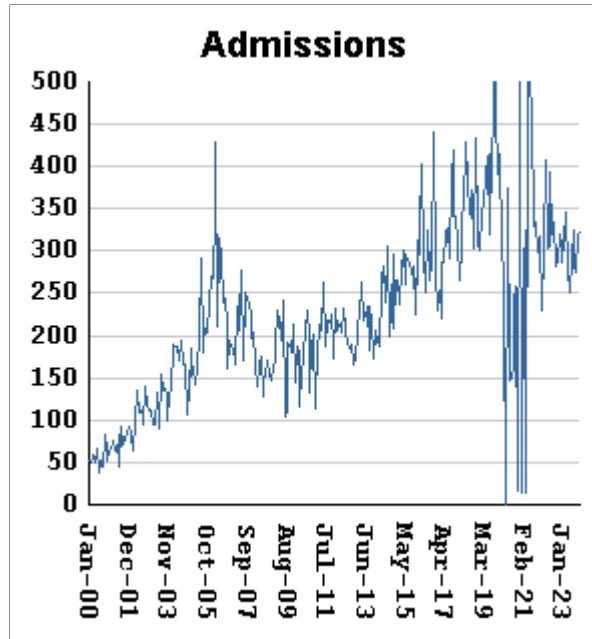
## Monthly releases from prison by type of release, for the past 48 months

Month	A	B	C	D	E	F	G	H	I	J
	Clemency + Prob	Clemency Only	Maxout + Prob	Maxout Only	Other Rels	Total Releases (A+B+C+D+E)	Total Clemency (A+B)	Total Maxout (C+D)	Percent Clemency (G/F)	Percent Maxout (H/F)
Dec-19	756	121	636	78	24	1615	877	714	54.30%	44.21%
Jan-20	714	101	709	81	24	1629	815	790	50.03%	48.50%
Feb-20	633	105	688	90	21	1537	738	778	48.02%	50.62%
Mar-20	672	138	657	83	22	1572	810	740	51.53%	47.07%
Apr-20	699	118	812	105	19	1753	817	917	46.61%	52.31%
May-20	676	139	1093	155	28	2091	815	1248	38.98%	59.68%
Jun-20	717	127	534	54	15	1447	844	588	58.33%	40.64%
Jul-20	740	149	557	47	28	1521	889	604	58.45%	39.71%
Aug-20	676	145	514	55	34	1424	821	569	57.65%	39.96%
Sep-20	685	132	450	66	33	1366	817	516	59.81%	37.77%
Oct-20	695	121	515	71	29	1431	816	586	57.02%	40.95%
Nov-20	605	112	481	52	21	1271	717	533	56.41%	41.94%
Dec-20	624	99	447	59	18	1247	723	506	57.98%	40.58%
Jan-21	634	91	516	58	21	1320	725	574	54.92%	43.48%
Feb-21	614	98	480	63	20	1275	712	543	55.84%	42.59%
Mar-21	571	106	494	72	16	1259	677	566	53.77%	44.96%
Apr-21	533	96	456	60	24	1169	629	516	53.81%	44.14%
May-21	446	77	508	54	21	1106	523	562	47.29%	50.81%
Jun-21	365	87	471	65	21	1009	452	536	44.80%	53.12%
Jul-21	389	68	535	62	19	1073	457	597	42.59%	55.64%
Aug-21	411	70	533	62	28	1104	481	595	43.57%	53.89%
Sep-21	445	74	526	64	32	1141	519	590	45.49%	51.71%
Oct-21	450	75	527	55	21	1128	525	582	46.54%	51.60%
Nov-21	423	82	492	66	18	1081	505	558	46.72%	51.62%
Dec-21	470	81	482	57	18	1108	551	539	49.73%	48.65%
Jan-22	462	78	552	75	26	1193	540	627	45.26%	52.56%
Feb-22	444	80	465	71	24	1084	524	536	48.34%	49.45%
Mar-22	464	69	515	56	16	1120	533	571	47.59%	50.98%
Apr-22	457	71	473	68	16	1085	528	541	48.66%	49.86%
May-22	441	77	540	64	26	1148	518	604	45.12%	52.61%
Jun-22	457	64	529	57	21	1128	521	586	46.19%	51.95%
Jul-22	444	66	528	61	14	1113	510	589	45.82%	52.92%
Aug-22	426	66	619	66	21	1198	492	685	41.07%	57.18%
Sep-22	400	75	550	59	18	1102	475	609	43.10%	55.26%
Oct-22	376	59	606	61	23	1125	435	667	38.67%	59.29%
Nov-22	366	53	523	55	19	1016	419	578	41.24%	56.89%
Dec-22	345	57	553	56	28	1039	402	609	38.69%	58.61%
Jan-23	373	53	528	58	23	1035	426	586	41.16%	56.62%
Feb-23	392	43	499	49	17	1000	435	548	43.50%	54.80%
Mar-23	378	54	573	63	24	1092	432	636	39.56%	58.24%
Apr-23	390	58	573	54	26	1101	448	627	40.69%	56.95%
May-23	330	45	939	123	20	1457	375	1062	25.74%	72.89%
Jun-23	463	70	567	60	19	1179	533	627	45.21%	53.18%
Jul-23	461	73	516	43	25	1118	534	559	47.76%	50.00%
Aug-23	408	46	588	57	22	1121	454	645	40.50%	57.54%
Sep-23	404	55	577	45	10	1091	459	622	42.07%	57.01%
Oct-23	363	52	579	52	31	1077	415	631	38.53%	58.59%
Nov-23	357	55	497	64	19	992	412	561	41.53%	56.55%

## Inmates with meth crimes, by month, Jan-2000 to Nov-2023

Methamphetamine is one of the most addictive drugs ever known. At first it induces intense euphoria, but with continued use causes severe depression and physical deterioration, including the dental catastrophe known as "meth mouth".

Georgia's meth epidemic peaked in 2007-2008, then declined, but is again growing. It started in the predominantly white northern counties, with blacks accounting for only about 5% of convictions. But black usage has expanded, and now accounts for about 15% of convictions.



Methamphetamine admissions

RISE BY 3 from 319 to 322

Methamphetamine releases

RISE BY 35 from 228 to 263

Methamphetamine population

RISES BY 59 from 7461 to 7520

Meth white population

RISES BY 35 from 5343 to 5378

Meth non-white population

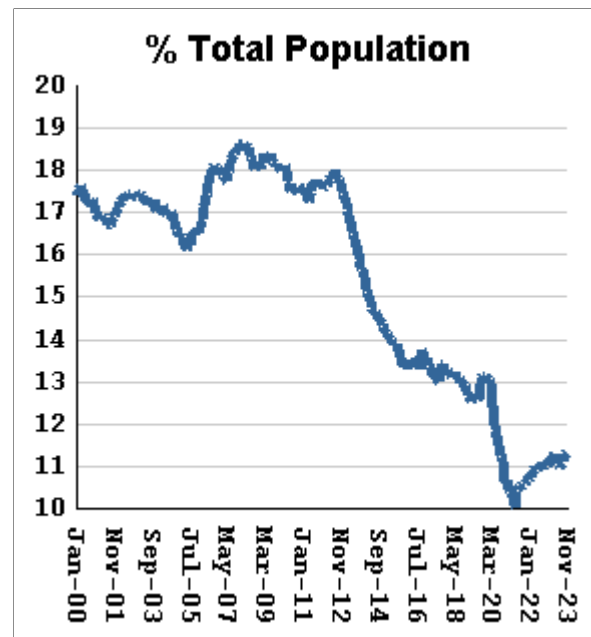
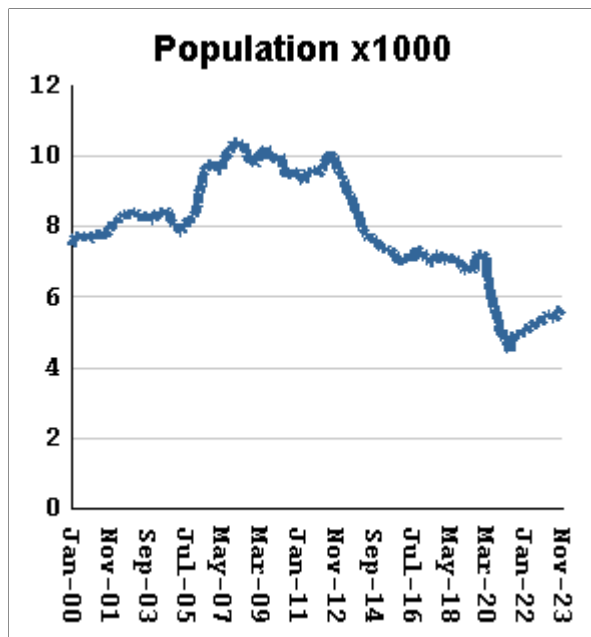
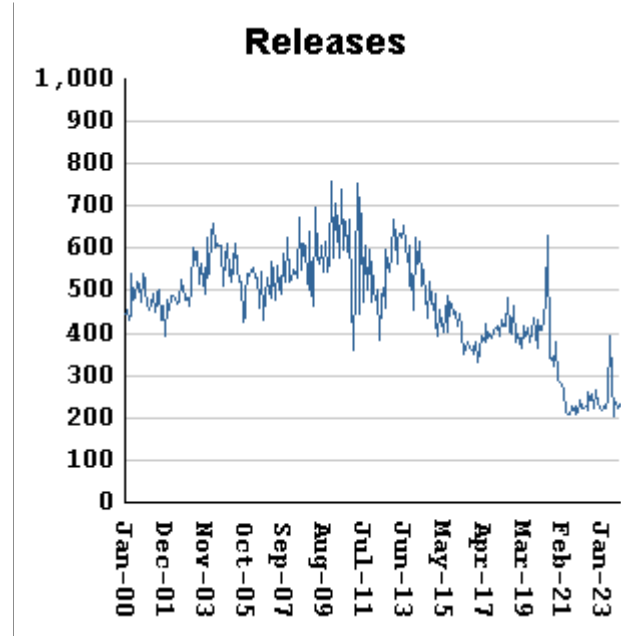
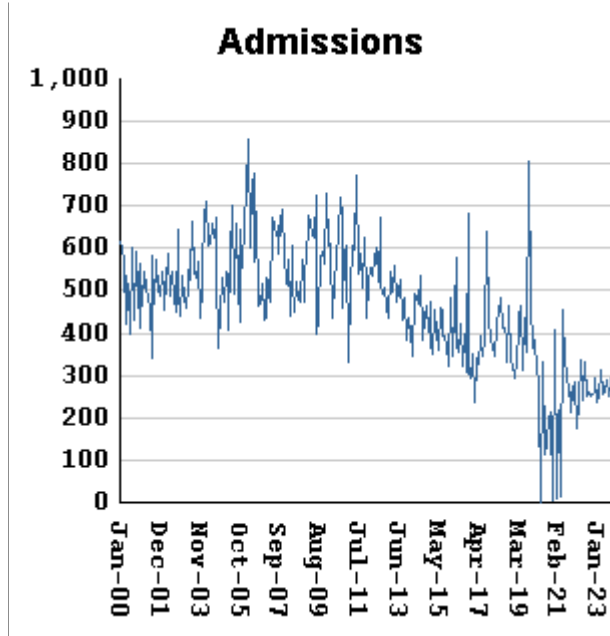
RISES BY 15 from 2127 to 2142

Percent meth inmates who are non-white

falls by .03 % from 28.51% to 28.48%

## Non-violent first-incarcerants, by month, Jan-2000 to Nov-2023

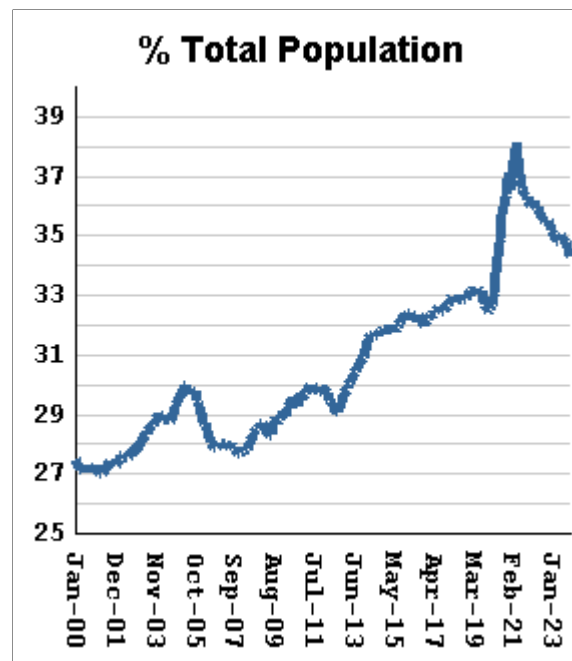
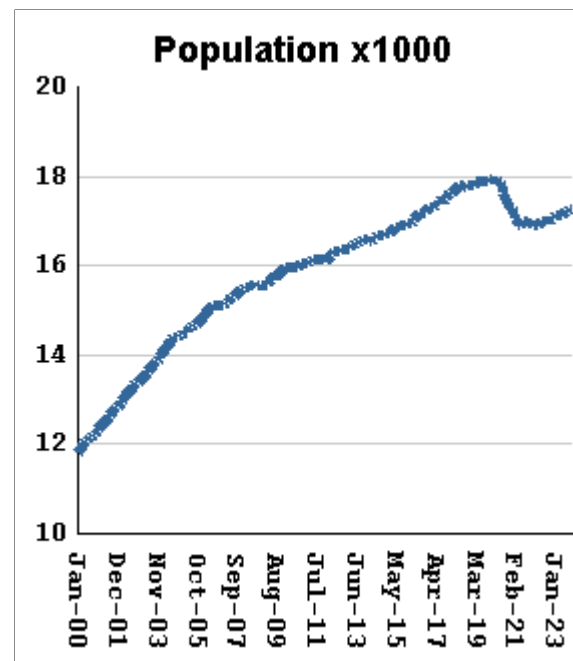
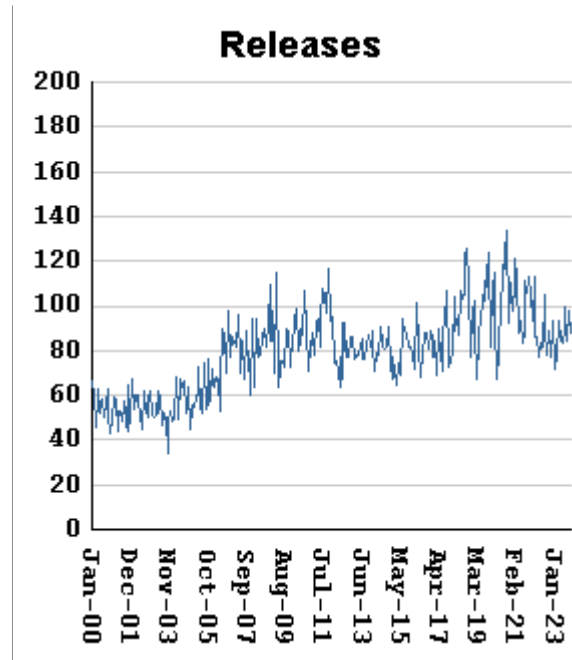
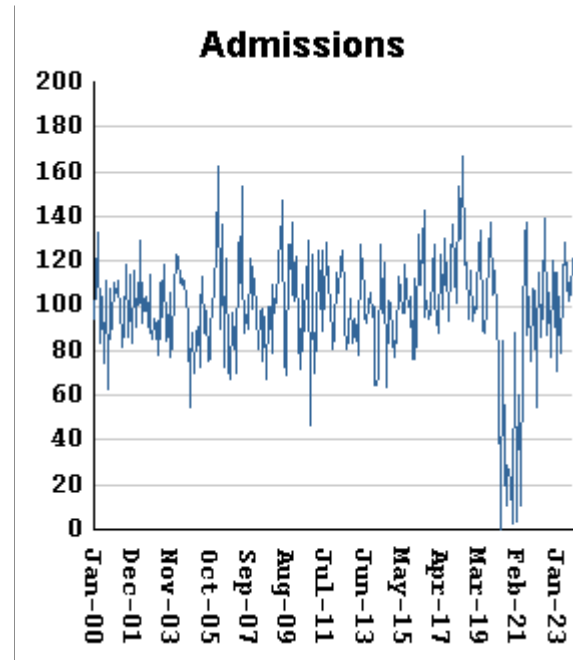
Historically, about one in six Georgia prison inmates has been a first-time incarcerant with a non-violent crime. In 2012 Georgia passed HB1176, which aimed to curb the growth of prison population by steering the least dangerous, least hardened offenders away from prison through pre-trial intervention, diversion, drug courts and treatment programs, and raising the dollar thresholds that define property felonies. The expectation is that over time, these measures will reduce the percentage of first-time non-violent incarcerants in prison.



Non-viol/1st-Incar admissions	fall by	2	from	322	to	320
Non-viol/1st-Incar releases	RISE BY	8	from	225	to	233
Non-viol/1st-Incar population	RISES BY	87	from	5627	to	5714
Non-viol/1st-Incar % of total population	RISES BY	.07 %	from	11.26%	to	11.33%

## "Seven Deadly Sins" by month, Jan-2000 to Nov-2023

Tough legislation in 1995 imposed mandatory ten-year minimum terms for kidnapping, armed robbery, rape, aggravated sodomy, aggravated sexual battery, and aggravated child molestation, and a minimum of 25 years for murder. A second conviction resulted in life without parole. As predicted, longer prison terms caused population to climb steeply for about a decade. It then began to level off, as releases started catching up with admissions. The 2008 dip in percentage of total population (bottom right) was caused by the surge of methamphetamine convictions (Page MO-03). Note: these graphs include inmates convicted before 1995.



"Seven Deadly Sin" admissions	RISE BY	14	from	107	to	121
"Seven Deadly Sin" releases	fall by	10	from	98	to	88
"Seven Deadly Sin" population	RISES BY	33	from	17246	to	17279
"Seven Deadly Sin" % of total population	falls by	.25 %	from	34.52%	to	34.27%

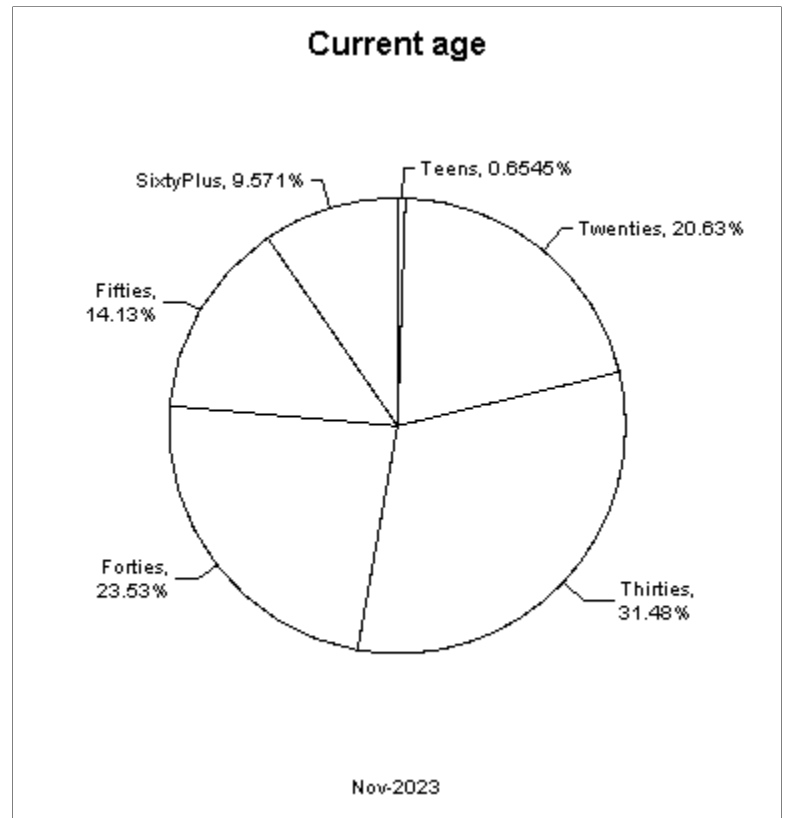
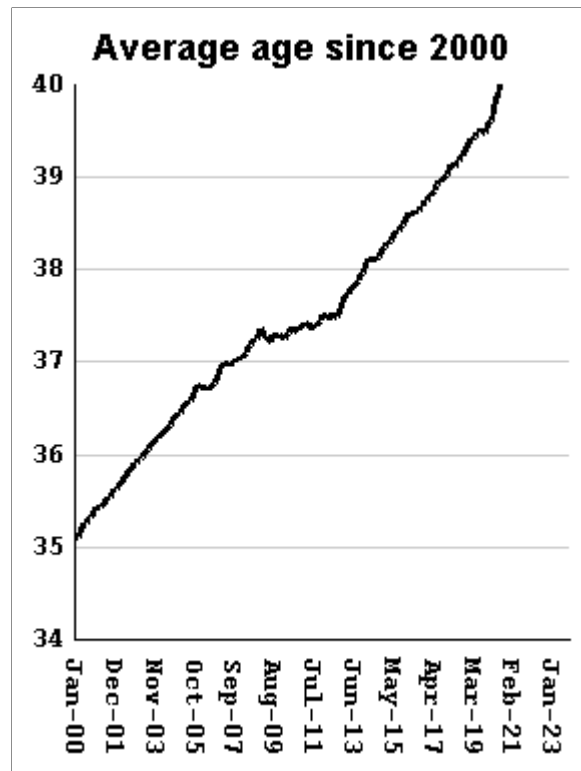
## Inmate subpopulation counts and percentages, for the past 48 months

Month	Methamphetamine						1st Incar Non-Violent		Seven Deadly Sins	
	Total Number	Total Percent	White Number	White Percent	Non White Number	Non White Percent	Number	Percent	Number	Percent
Dec-19	7838	14.20%	5994	76.47%	1851	23.62%	7220	13.08%	17937	32.50%
Jan-20	7769	14.12%	5944	76.51%	1831	23.57%	7162	13.02%	17916	32.56%
Feb-20	7743	14.12%	5893	76.11%	1856	23.97%	7099	12.94%	17915	32.66%
Mar-20	7594	14.00%	5777	76.07%	1822	23.99%	6930	12.78%	17924	33.04%
Apr-20	7179	13.68%	5436	75.72%	1748	24.35%	6444	12.28%	17845	33.99%
May-20	7013	13.55%	5308	75.69%	1710	24.38%	6144	11.87%	17826	34.44%
Jun-20	6854	13.48%	5246	76.54%	1691	24.67%	5923	11.65%	17744	34.90%
Jul-20	6668	13.40%	5028	75.40%	1645	24.67%	5692	11.44%	17627	35.41%
Aug-20	6518	13.31%	4904	75.24%	1618	24.82%	5490	11.21%	17539	35.82%
Sep-20	6443	13.33%	4917	76.32%	1599	24.82%	5370	11.11%	17430	36.05%
Oct-20	6350	13.31%	4783	75.32%	1571	24.74%	5204	10.91%	17360	36.39%
Nov-20	6064	13.04%	4545	74.95%	1522	25.10%	4920	10.58%	17253	37.10%
Dec-20	6315	13.37%	4723	74.79%	1595	25.26%	5044	10.68%	17243	36.52%
Jan-21	6013	13.09%	4496	74.77%	1520	25.28%	4775	10.39%	17138	37.30%
Feb-21	5985	13.17%	4491	75.04%	1547	25.85%	4692	10.32%	17044	37.50%
Mar-21	6045	13.31%	4479	74.09%	1569	25.96%	4641	10.22%	16992	37.43%
Apr-21	5788	13.05%	4281	73.96%	1510	26.09%	4438	10.01%	16915	38.14%
May-21	6125	13.56%	4577	74.73%	1613	26.33%	4681	10.36%	16908	37.44%
Jun-21	6387	13.91%	4723	73.95%	1700	26.62%	4798	10.45%	16957	36.93%
Jul-21	6607	14.21%	4864	73.62%	1746	26.43%	4884	10.50%	17005	36.56%
Aug-21	6683	14.32%	4919	73.60%	1776	26.57%	4919	10.54%	16981	36.39%
Sep-21	6748	14.42%	4960	73.50%	1791	26.54%	4955	10.59%	16979	36.29%
Oct-21	6770	14.46%	4977	73.52%	1796	26.53%	4956	10.59%	16941	36.19%
Nov-21	6832	14.56%	5031	73.64%	1813	26.54%	5011	10.68%	16944	36.11%
Dec-21	6848	14.55%	5038	73.57%	1813	26.47%	5052	10.74%	16957	36.03%
Jan-22	6774	14.51%	4991	73.68%	1814	26.78%	5001	10.71%	16899	36.19%
Feb-22	6799	14.55%	5016	73.78%	1836	27.00%	5019	10.74%	16897	36.15%
Mar-22	6920	14.68%	5052	73.01%	1871	27.04%	5128	10.88%	16926	35.92%
Apr-22	6940	14.70%	5063	72.95%	1880	27.09%	5171	10.96%	16935	35.88%
May-22	6982	14.77%	5089	72.89%	1913	27.40%	5156	10.91%	16954	35.87%
Jun-22	7101	14.89%	5162	72.69%	1944	27.38%	5247	11.00%	17011	35.67%
Jul-22	7129	14.91%	5172	72.55%	1960	27.49%	5240	10.96%	16997	35.55%
Aug-22	7181	15.01%	5225	72.76%	1980	27.57%	5278	11.03%	16994	35.52%
Sep-22	7199	15.02%	5200	72.23%	2001	27.80%	5262	10.98%	17022	35.52%
Oct-22	7208	15.04%	5224	72.48%	2010	27.89%	5288	11.03%	17010	35.49%
Nov-22	7245	15.03%	5273	72.78%	2011	27.76%	5322	11.04%	17053	35.37%
Dec-22	7281	15.00%	5270	72.38%	2013	27.65%	5391	11.11%	17069	35.17%
Jan-23	7332	15.07%	5303	72.33%	2045	27.89%	5413	11.13%	17068	35.08%
Feb-23	7388	15.12%	5334	72.20%	2070	28.02%	5443	11.14%	17111	35.03%
Mar-23	7455	15.16%	5380	72.17%	2077	27.86%	5534	11.25%	17127	34.83%
Apr-23	7449	15.15%	5386	72.31%	2065	27.72%	5545	11.28%	17113	34.80%
May-23	7314	14.93%	5291	72.34%	2049	28.01%	5415	11.06%	17139	35.00%
Jun-23	7308	14.84%	5260	71.98%	2050	28.05%	5408	10.98%	17184	34.90%
Jul-23	7369	14.92%	5321	72.21%	2086	28.31%	5462	11.06%	17200	34.82%
Aug-23	7379	14.92%	5284	71.61%	2096	28.40%	5493	11.10%	17219	34.81%
Sep-23	7370	14.85%	5278	71.61%	2092	28.39%	5530	11.14%	17237	34.73%
Oct-23	7461	14.93%	5343	71.61%	2127	28.51%	5627	11.26%	17246	34.52%
Nov-23	7520	14.91%	5378	71.52%	2142	28.48%	5714	11.33%	17279	34.27%



## Overview of inmate age statistics, Jan-2000 to Nov-2023

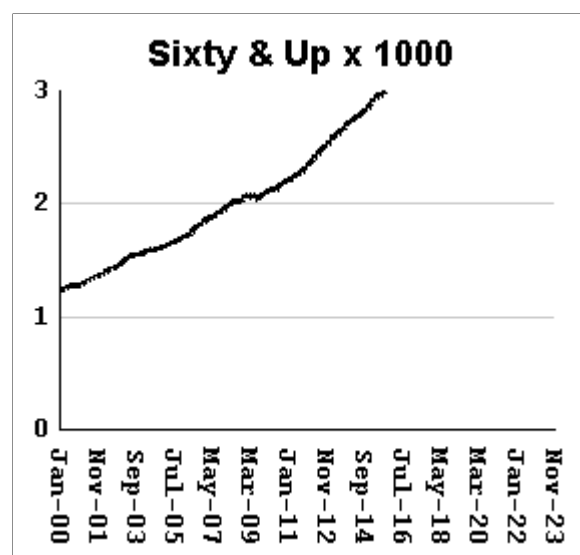
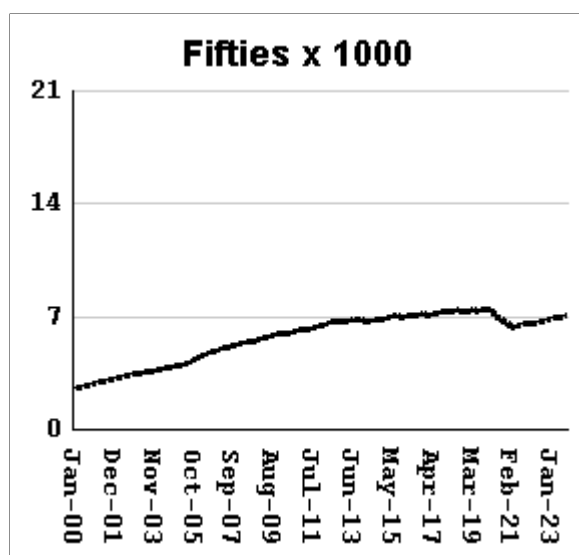
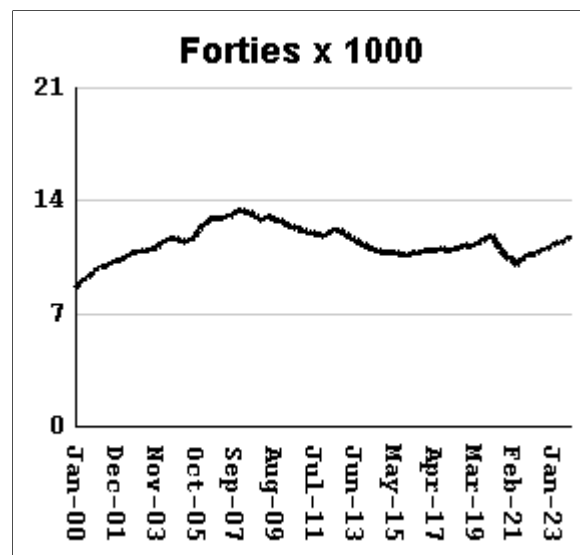
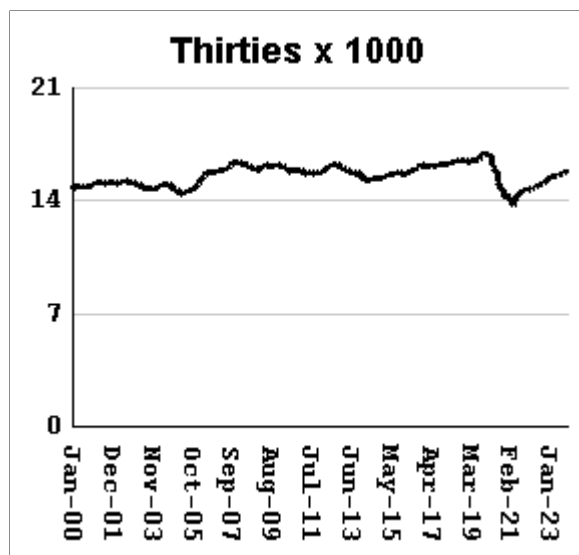
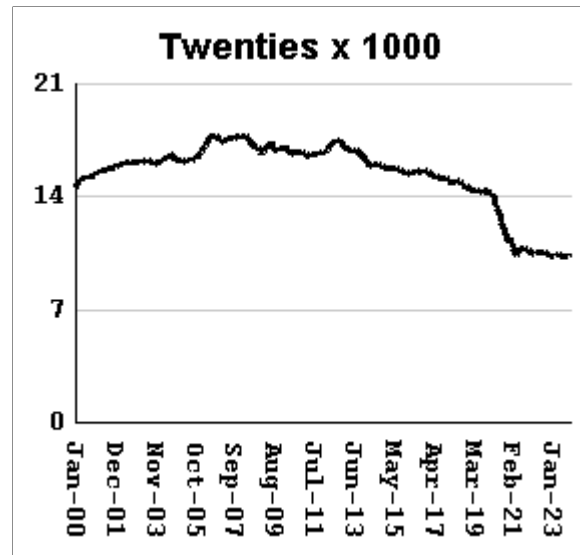
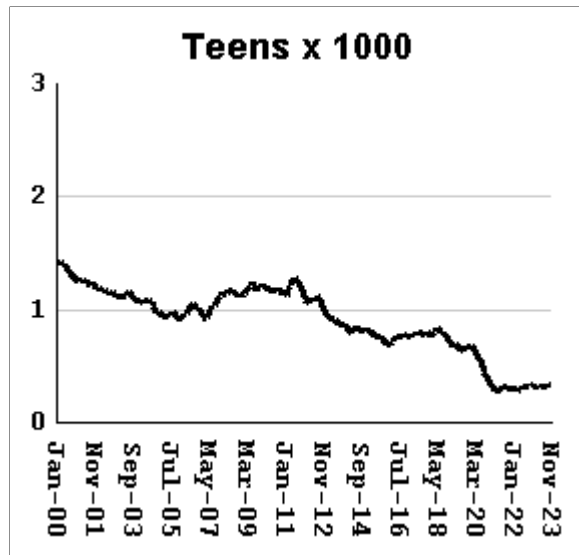
The "aging inmate population" is a concern in correctional systems throughout America, including Georgia. Here, the increase in inmate age is the result of several factors. Teenagers have been steered away from prison by increased usage of probation and other alternatives, at least for their first convictions. And there has been a surge of middle-aged male sex offenders due to the expanding "It's OK to tell" ethos. But most importantly, more severe sentence lengths and release policies have greatly increased the length of time that most offenders -- especially violent ones -- spend in prison, thereby increasing their average age.



Average age of active inmates	RISES BY	.02	from	41.3	to	41.32
Number in their teens	RISES BY	1	from	329	to	330
Percentage in their teens	falls by	.01%	from	.66%	to	0.65%
Number in their twenties	RISES BY	89	from	10,315	to	10,404
Percentage in their twenties	falls by	0.01%	from	20.64%	to	20.63%
Number in their thirties	RISES BY	103	from	15,772	to	15,875
Percentage in their thirties	falls by	0.09%	from	31.57%	to	31.48%
Number in their forties	RISES BY	129	from	11,734	to	11,863
Percentage in their forties	RISES BY	0.05%	from	23.48%	to	23.53%
Number in their fifties	RISES BY	67	from	7057	to	7,124
Percentage in their fifties	RISES BY	0.01%	from	14.12%	to	14.13%
Number age sixty and up	RISES BY	35	from	4791	to	4,826
Percentage age sixty and up	falls by	.02%	from	9.59%	to	9.57%

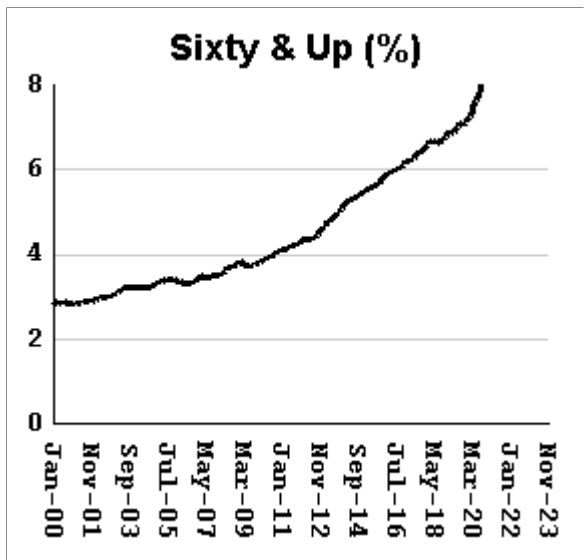
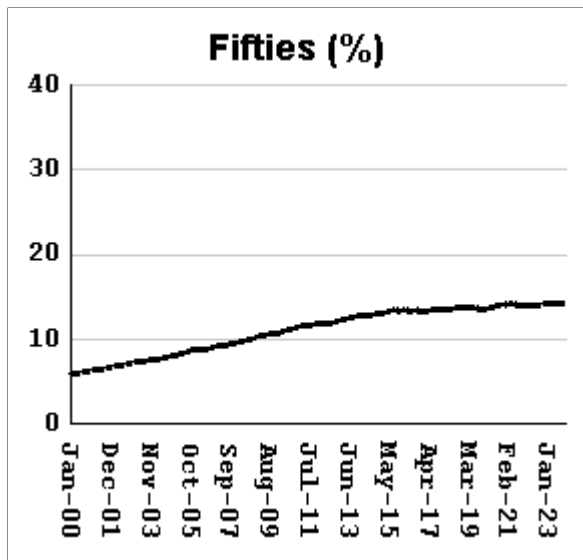
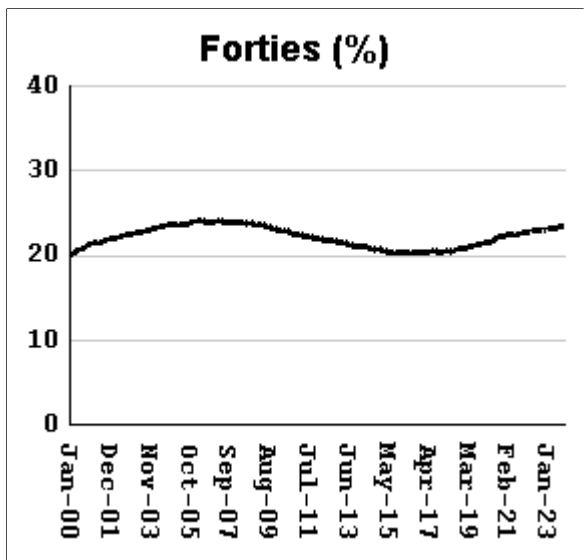
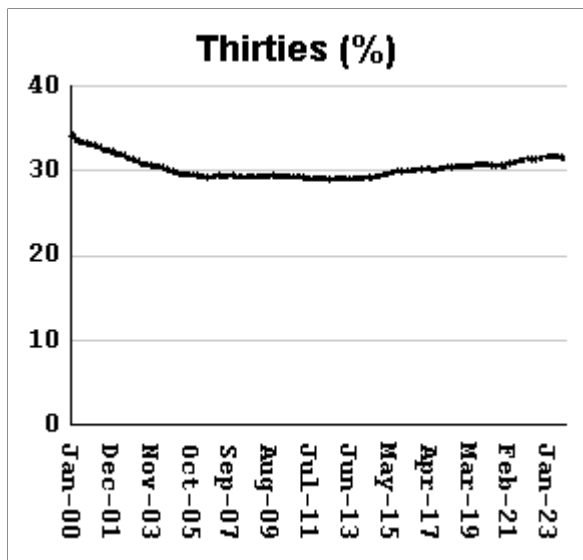
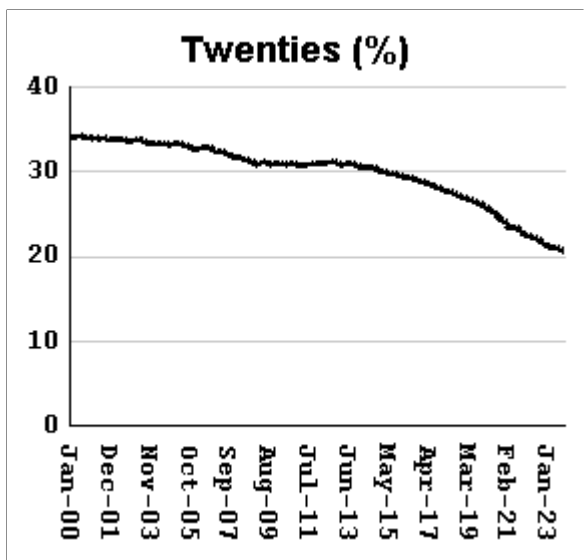
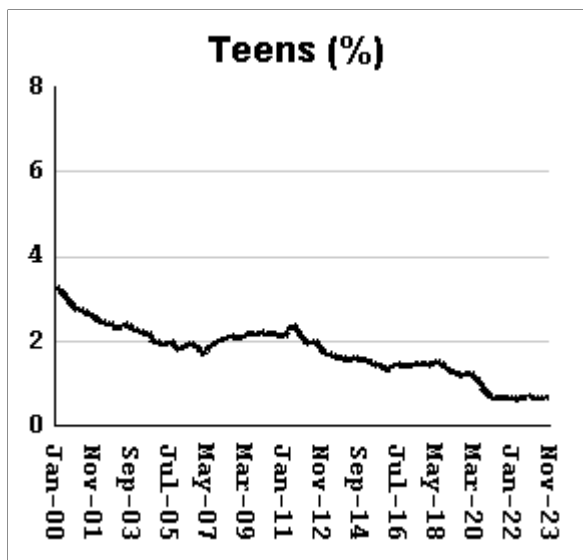
# Monthly counts of inmates by age group, Jan-2000 to Nov-2023

Y-axis of Twenties/Thirties/Forties/Fifties runs from 0 to 21,000. Y-axis of Teens/Sixty+ runs from 0 to 3,000.



# Monthly percentages of inmates by age group, Jan-2000 to Nov-2023

Y-axis of Twenties/Thirties/Forties/Fifties runs from 0% to 40%. Y-axis of Teens/Sixty+ runs from 0% to 8%

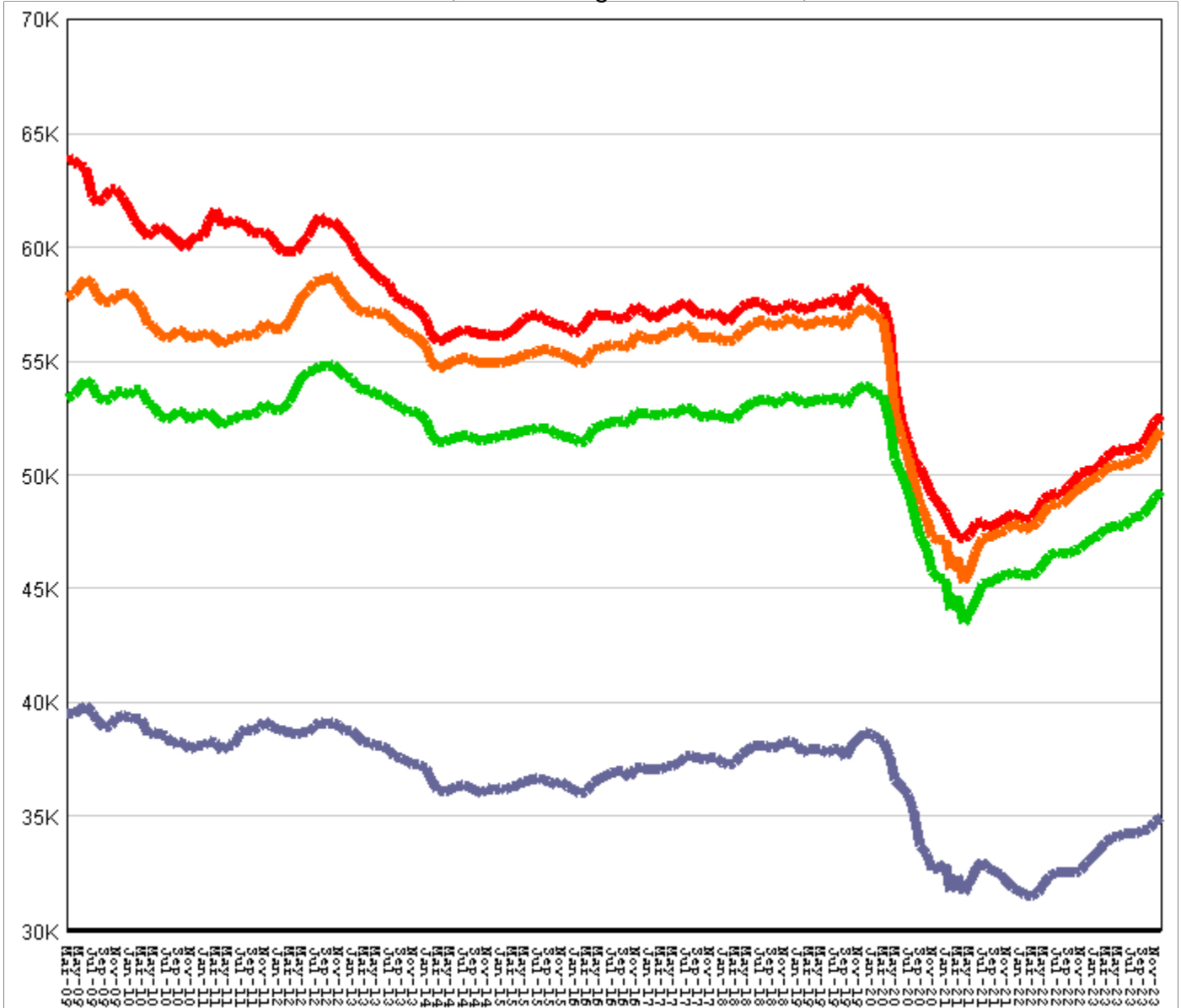


## Inmate counts & percentages by age, for past 48 months

Month	Avg Age	Teens		Twenties		Thirties		Forties		Fifties		Sixty & Up	
		Num-ber	Per-cent	Num-ber	Per-cent	Num-ber	Per-cent	Num-ber	Per-cent	Num-ber	Per-cent	Num-ber	Per-cent
Dec-19	39.55	683	1.24%	14330	25.96%	16955	30.72%	11805	21.39%	7482	13.56%	3950	7.16%
Jan-20	39.59	679	1.23%	14215	25.84%	16916	30.75%	11828	21.50%	7433	13.51%	3960	7.20%
Feb-20	39.61	665	1.21%	14158	25.81%	16885	30.78%	11750	21.42%	7445	13.57%	3965	7.23%
Mar-20	39.68	641	1.18%	13926	25.67%	16676	30.74%	11631	21.44%	7401	13.64%	3984	7.34%
Apr-20	39.83	577	1.10%	13347	25.43%	16086	30.64%	11313	21.55%	7218	13.75%	3967	7.56%
May-20	39.87	562	1.09%	13115	25.33%	15848	30.61%	11204	21.64%	7120	13.75%	3932	7.60%
Jun-20	39.94	534	1.05%	12838	25.25%	15645	30.77%	11101	21.83%	7028	13.82%	3917	7.70%
Jul-20	40.07	480	0.96%	12402	24.92%	15201	30.54%	10898	21.89%	6920	13.90%	3885	7.81%
Aug-20	40.14	440	0.90%	12140	24.79%	14922	30.47%	10782	22.02%	6830	13.95%	3868	7.90%
Sep-20	40.2	418	0.86%	11930	24.68%	14820	30.66%	10719	22.17%	6788	14.04%	3877	8.02%
Oct-20	40.28	390	0.82%	11616	24.35%	14561	30.53%	10580	22.18%	6701	14.05%	3863	8.10%
Nov-20	40.41	352	0.76%	11180	24.04%	14200	30.54%	10354	22.27%	6571	14.13%	3853	8.29%
Dec-20	40.38	340	0.72%	11378	24.10%	14458	30.62%	10512	22.26%	6631	14.04%	3909	8.28%
Jan-21	40.49	304	0.66%	10954	23.84%	14070	30.63%	10265	22.34%	6468	14.08%	3888	8.46%
Feb-21	40.53	291	0.64%	10799	23.76%	14082	30.98%	10264	22.58%	6423	14.13%	3873	8.52%
Mar-21	40.56	296	0.65%	10672	23.51%	14010	30.86%	10174	22.41%	6371	14.03%	3887	8.56%
Apr-21	40.69	272	0.61%	10321	23.27%	13651	30.78%	9963	22.46%	6279	14.16%	3870	8.73%
May-21	40.62	290	0.64%	10588	23.44%	14029	31.06%	10175	22.53%	6371	14.11%	3923	8.69%
Jun-21	40.59	307	0.67%	10783	23.48%	14254	31.04%	10281	22.39%	6449	14.04%	3979	8.67%
Jul-21	40.58	316	0.68%	10859	23.35%	14438	31.04%	10385	22.33%	6494	13.96%	4022	8.65%
Aug-21	40.61	317	0.68%	10804	23.16%	14537	31.16%	10473	22.45%	6514	13.96%	4045	8.67%
Sep-21	40.64	316	0.68%	10745	22.97%	14607	31.22%	10497	22.44%	6523	13.94%	4100	8.76%
Oct-21	40.68	298	0.64%	10646	22.74%	14658	31.31%	10576	22.59%	6527	13.94%	4110	8.78%
Nov-21	40.7	298	0.64%	10633	22.66%	14715	31.36%	10653	22.70%	6535	13.93%	4126	8.79%
Dec-21	40.72	302	0.64%	10604	22.53%	14743	31.33%	10691	22.72%	6568	13.96%	4154	8.83%
Jan-22	40.78	293	0.63%	10482	22.45%	14649	31.37%	10644	22.79%	6573	14.08%	4161	8.91%
Feb-22	40.8	298	0.64%	10483	22.43%	14687	31.42%	10671	22.83%	6572	14.06%	4181	8.95%
Mar-22	40.79	295	0.63%	10532	22.35%	14779	31.36%	10734	22.78%	6583	13.97%	4210	8.93%
Apr-22	40.83	285	0.60%	10525	22.30%	14773	31.30%	10790	22.86%	6605	13.99%	4226	8.95%
May-22	40.86	281	0.59%	10509	22.24%	14826	31.37%	10823	22.90%	6606	13.98%	4262	9.02%
Jun-22	40.85	306	0.64%	10595	22.21%	14941	31.33%	10933	22.92%	6637	13.92%	4289	8.99%
Jul-22	40.89	315	0.66%	10550	22.06%	14985	31.34%	10975	22.95%	6679	13.97%	4316	9.03%
Aug-22	40.92	317	0.66%	10519	21.99%	15031	31.42%	11017	23.03%	6715	14.04%	4358	9.11%
Sep-22	40.97	314	0.66%	10437	21.78%	15053	31.41%	10988	22.93%	6742	14.07%	4391	9.16%
Oct-22	40.99	321	0.67%	10378	21.65%	15139	31.58%	11042	23.04%	6757	14.10%	4408	9.20%
Nov-22	41.01	332	0.69%	10402	21.57%	15243	31.61%	11144	23.11%	6805	14.11%	4452	9.23%
Dec-22	41.04	338	0.70%	10364	21.35%	15327	31.58%	11166	23.01%	6858	14.13%	4485	9.24%
Jan-23	41.07	326	0.67%	10342	21.26%	15410	31.67%	11204	23.03%	6878	14.14%	4528	9.31%
Feb-23	41.09	315	0.64%	10346	21.18%	15476	31.68%	11295	23.12%	6882	14.09%	4579	9.37%
Mar-23	41.09	316	0.64%	10399	21.15%	15566	31.65%	11383	23.15%	6931	14.09%	4580	9.31%
Apr-23	41.12	305	0.62%	10391	21.13%	15567	31.66%	11393	23.17%	6934	14.10%	4588	9.33%
May-23	41.14	311	0.64%	10346	21.13%	15569	31.79%	11369	23.21%	6927	14.14%	4603	9.40%
Jun-23	41.17	312	0.63%	10320	20.96%	15633	31.75%	11400	23.15%	6945	14.11%	4625	9.39%
Jul-23	41.2	317	0.64%	10332	20.92%	15704	31.80%	11512	23.31%	6983	14.14%	4660	9.43%
Aug-23	41.26	303	0.61%	10287	20.79%	15642	31.62%	11546	23.34%	6984	14.12%	4706	9.51%
Sep-23	41.28	313	0.63%	10302	20.75%	15661	31.55%	11608	23.39%	7009	14.12%	4743	9.56%
Oct-23	41.3	329	0.66%	10315	20.64%	15772	31.57%	11734	23.48%	7057	14.12%	4791	9.59%
Nov-23	41.32	330	0.65%	10404	20.63%	15875	31.48%	11863	23.53%	7124	14.13%	4826	9.57%

## All housed offenders under GDC jurisdiction

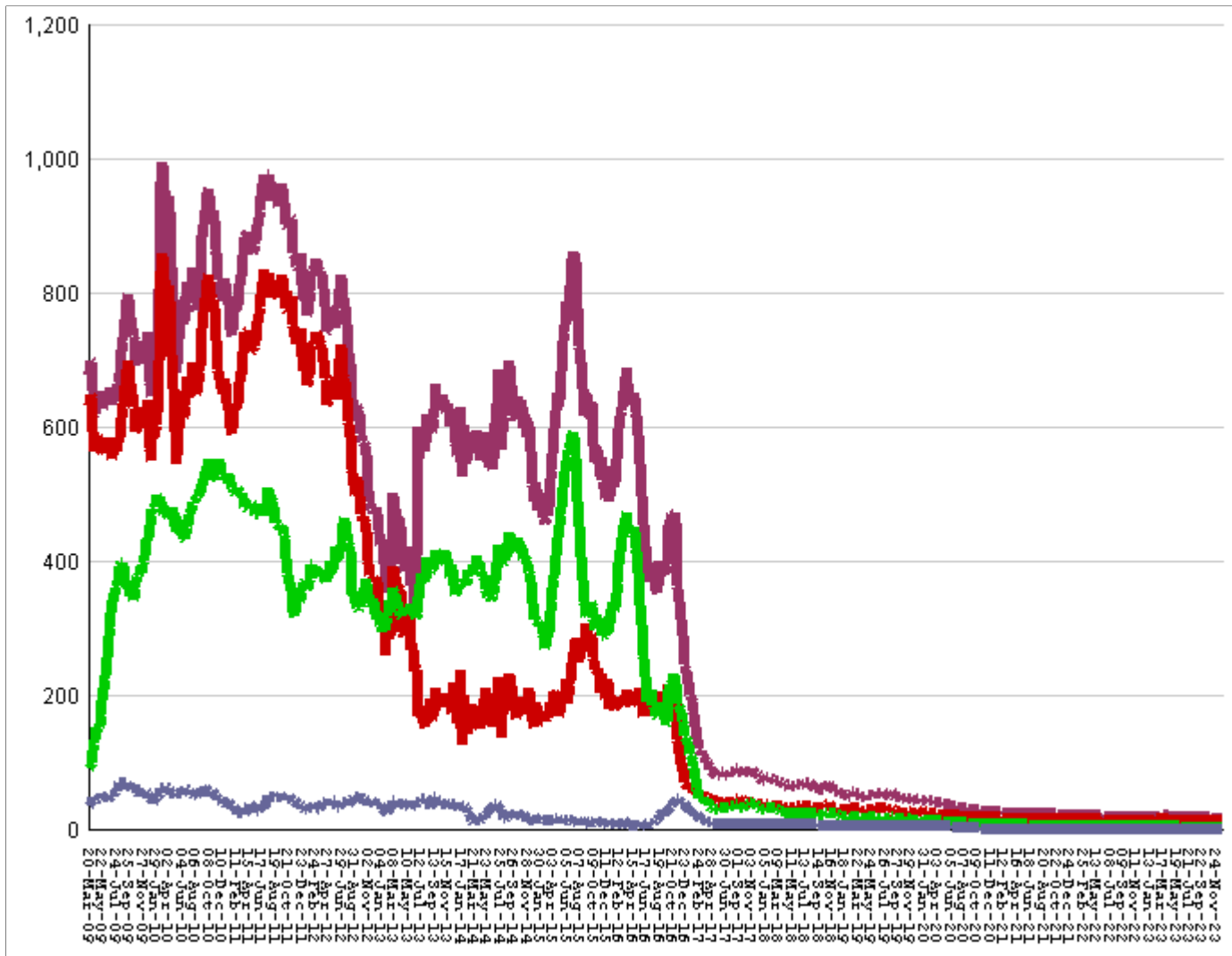
March 20, 2009 through December 29, 2023



<b>All in bed + probs in jail + backlog</b>	<b>fall by</b>	<b>11</b>	<b>from</b>	<b>52,691</b>	<b>to</b>	<b>52,680</b>
<b>Probationers in jail</b>	....	....	...	17	at	17
<b>Inmate jail backlog</b>	<b>RISES BY</b>	<b>18</b>	<b>from</b>	<b>634</b>	<b>to</b>	<b>652</b>
<b>All in beds: inmate + Prob + parole</b>	<b>fall by</b>	<b>29</b>	<b>from</b>	<b>52,040</b>	<b>to</b>	<b>52,011</b>
<b>Total probationers in beds</b>	<b>fall by</b>	<b>86</b>	<b>from</b>	<b>2,687</b>	<b>to</b>	<b>2,601</b>
<b>Probation detention centers</b>	<b>fall by</b>	<b>49</b>	<b>from</b>	<b>1,276</b>	<b>to</b>	<b>1,227</b>
<b>Probation boot camps</b>	<b>fall by</b>		<b>from</b>		<b>to</b>	
<b>Probation RSAT</b>	<b>fall by</b>	<b>37</b>	<b>from</b>	<b>1411</b>	<b>to</b>	<b>1,374</b>
<b>Parole revocation centers</b>	<b>fall by</b>		<b>from</b>		<b>to</b>	
<b>All in inmate beds: state + other</b>	<b>RISE BY</b>	<b>57</b>	<b>from</b>	<b>49,353</b>	<b>to</b>	<b>49,410</b>
<b>Other inmate facilities :</b>	<b>RISE BY</b>	<b>35</b>	<b>from</b>	<b>14,405</b>	<b>to</b>	<b>14,440</b>
<b>Inmate boot camps</b>	<b>fall by</b>	<b>1</b>	<b>from</b>	<b>1</b>	<b>to</b>	<b>0</b>
<b>Private prisons</b>	<b>RISE BY</b>	<b>29</b>	<b>from</b>	<b>7647</b>	<b>to</b>	<b>7,676</b>
<b>County prisons</b>	<b>RISE BY</b>	<b>8</b>	<b>from</b>	<b>4522</b>	<b>to</b>	<b>4,530</b>
<b>Transitional centers</b>	<b>fall by</b>	<b>1</b>	<b>from</b>	<b>2235</b>	<b>to</b>	<b>2,234</b>
<b>In state prisons only</b>	<b>RISE BY</b>	<b>22</b>	<b>from</b>	<b>34,948</b>	<b>to</b>	<b>34,970</b>

## Probationers in jail awaiting placement in facilities

March 20, 2009 through December 29, 2023



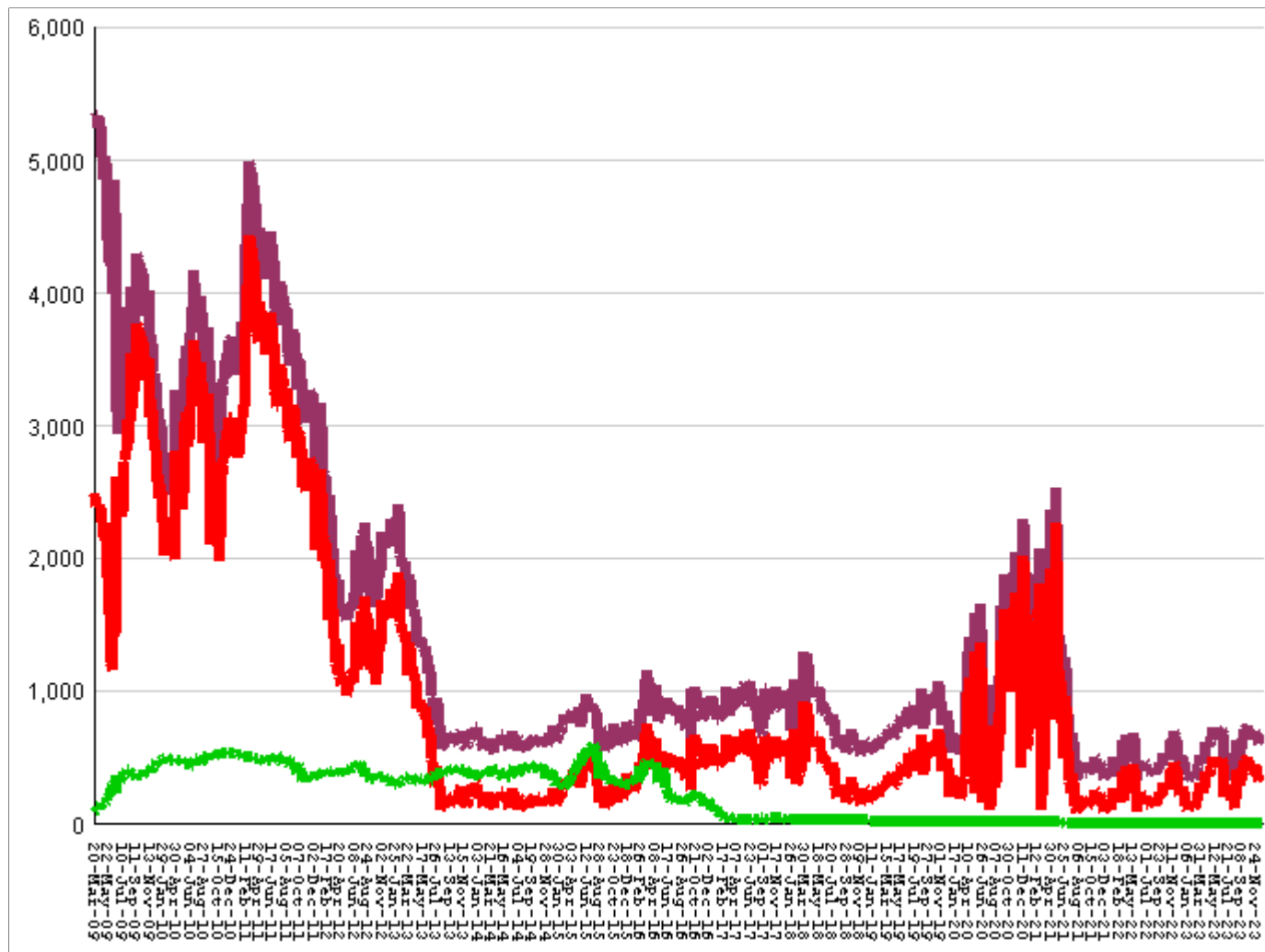
This graph shows, for each Friday since March 20 2009, the number of sentenced felony probationers who were waiting in jail for placement in facilities that GDC operates for housing probationers -- detention centers, probation residential substance abuse treatment (RSAT) centers, and probation boot camps. Counts include both those offenders sentenced directly from court, and those whose street probation was revoked.

Total probationers waiting in jail	...	...	...	level	at	17
... waiting for detention centers	...	...	...	level	at	13
... waiting for probation RSAT	...	...	...	level	at	3
... waiting for probation boot camps	...	...	...	level	at	1

The highest number of probationers waiting in jail was	994	on	05-MAR-10
... highest number waiting for detention centers was	859	on	05-MAR-10
... highest number waiting for probation RSAT was	592	on	10-JUL-15
... highest number waiting for probation boot camps was	70	on	18-SEP-09

## State inmates in jail awaiting placement in facilities

March 20, 2009 through December 29, 2023



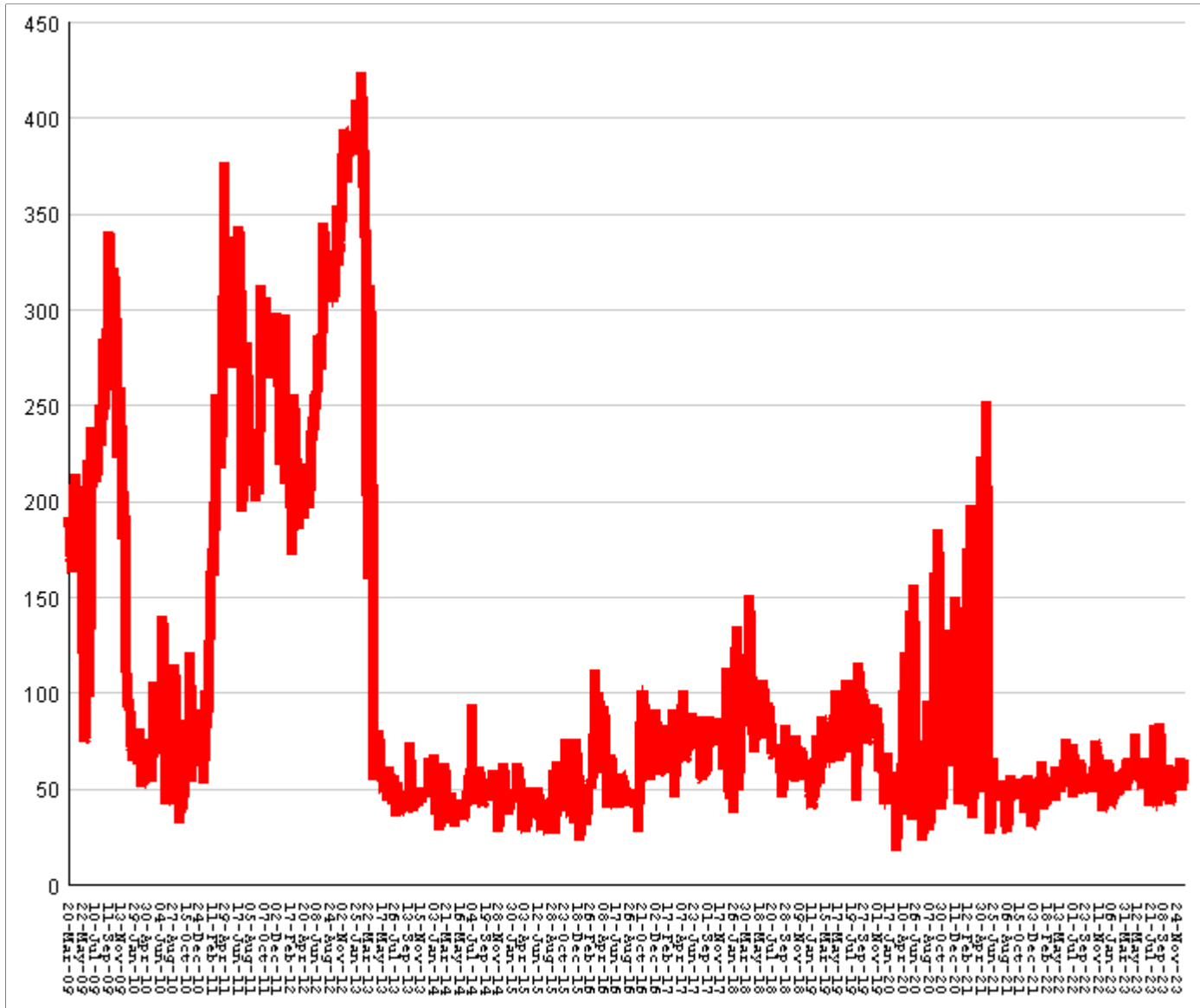
This graph shows, for each Friday since March 2009, the number of prisoners, probationers, and parolees in local jails who have been sentenced or revoked to state prison and whose documents have been received and verified by GDC. Most are almost immediately assigned to a diagnostic center, and are designated as in "admission processing". Of those a few hundred may be in the "transportation delayed" category because there is no room in the assigned diagnostic center, or because the inmate is being held for medical reasons, or for other court proceedings, or other reasons. Those remaining are "ready to be picked up".

<b>Total state inmates waiting in jail</b>	<b>RISE BY</b>	<b>18</b>	<b>from</b>	<b>634</b>	<b>to</b>	<b>652</b>
<b>... not yet assigned to a diagnostic center</b>	<b>...</b>	<b>...</b>	<b>...</b>	<b>level</b>	<b>at</b>	<b>40</b>
<b>... total "in admission processing"</b>	<b>RISE BY</b>	<b>18</b>	<b>from</b>	<b>594</b>	<b>to</b>	<b>612</b>
<b>... with "transportation delayed"</b>	<b>RISE BY</b>	<b>2</b>	<b>from</b>	<b>241</b>	<b>to</b>	<b>243</b>
<b>... ready to be picked up</b>	<b>RISE BY</b>	<b>16</b>	<b>from</b>	<b>353</b>	<b>to</b>	<b>369</b>

<b>The highest number of state inmates waiting in jail was</b>	<b>5338</b>	<b>on</b>	<b>27-MAR-09</b>
<b>... highest number not asg to a diagnostic center was</b>	<b>2881</b>	<b>on</b>	<b>12-JUN-09</b>
<b>... highest number in admission processing was</b>	<b>4916</b>	<b>on</b>	<b>25-MAR-11</b>
<b>... highest number with transportation delayed was</b>	<b>645</b>	<b>on</b>	<b>14-JAN-11</b>
<b>... highest number ready to be pickup was</b>	<b>4435</b>	<b>on</b>	<b>25-MAR-11</b>

## Female state inmates in jail awaiting pickup

March 20, 2009 through December 29, 2023



This graph shows, for each Friday since March 2009, the number of female state prisoners in local jails who were assigned to diagnostic centers but had not yet been picked up.

<b>Female state inmates in jails waiting picked up</b>	<b>fall by</b>	<b>6</b>	<b>from</b>	<b>66</b>	<b>to</b>	<b>60</b>
<b>The highest number of female inmates waiting in jail was</b>		<b>424</b>	<b>on</b>	<b>01-FEB-13</b>		
<b>The lowest number of female inmates waiting in jail was</b>		<b>17</b>	<b>on</b>	<b>20-MAR-20</b>		



# Summary of housed prisoners, parolees, and probationers

Week ending	Prison	Parole	Probation			Prison+parole+probation	Jail		Total
	Total inmates	Revocation centers	Prob RSAT	Boot camp	Detention		Inmate backlog	Probationers	Prison+parole+probation+jail
06-Jan-2023	47175		1538		973	49686	342	18	50046
13-Jan-2023	47229		1580		976	49785	355	18	50158
20-Jan-2023	47219		1568		1029	49816	354	18	50188
27-Jan-2023	47244		1556		981	49781	321	18	50120
03-Feb-2023	47232		1558		1022	49812	374	18	50204
10-Feb-2023	47232		1554		1022	49808	338	18	50164
17-Feb-2023	47419		1534		1048	50001	395	19	50415
24-Feb-2023	47485		1535		1086	50106	380	19	50505
03-Mar-2023	47519		1524		1114	50157	443	19	50619
10-Mar-2023	47533		1505		1081	50119	432	20	50571
17-Mar-2023	47598		1557		1101	50256	433	19	50708
24-Mar-2023	47637		1598		1048	50283	484	20	50787
31-Mar-2023	47798		1572		1091	50461	518	20	50999
07-Apr-2023	47709		1551		1111	50371	584	20	50975
14-Apr-2023	47660		1573		1093	50326	579	20	50925
21-Apr-2023	47659		1577		1079	50315	610	19	50944
28-Apr-2023	47834		1584		1086	50504	599	19	51122
05-May-2023	47780		1531		1092	50403	628	19	51050
12-May-2023	47668		1568		1114	50350	657	19	51026
19-May-2023	47804		1601		1108	50513	643	19	51175
26-May-2023	47740		1548		1102	50390	717	19	51126
02-Jun-2023	47646		1535		1118	50299	678	19	50996
09-Jun-2023	47610		1489		1130	50229	671	19	50919
16-Jun-2023	47620		1522		1150	50292	705	18	51015
23-Jun-2023	47727		1481		1152	50360	694	18	51072
30-Jun-2023	47959		1411		1183	50553	713	18	51284
07-Jul-2023	47942		1380		1181	50503	526	18	51047
14-Jul-2023	48007		1383		1163	50553	445	18	51016
21-Jul-2023	48125		1375		1184	50684	464	18	51166
28-Jul-2023	48154		1413		1202	50769	415	18	51202
04-Aug-2023	48140		1379		1206	50725	411	18	51154
11-Aug-2023	48103		1414		1187	50704	332	18	51054
18-Aug-2023	48177		1299		1198	50674	397	18	51089
25-Aug-2023	48136		1323		1202	50661	522	18	51201
01-Sep-2023	48202		1307		1215	50724	630	18	51372
08-Sep-2023	48156		1305		1205	50666	540	18	51224
15-Sep-2023	48208		1297		1224	50729	507	18	51254
22-Sep-2023	48259		1312		1203	50774	565	18	51357
29-Sep-2023	48412		1327		1161	50900	627	18	51545
06-Oct-2023	48407		1305		1203	50915	704	18	51637
13-Oct-2023	48543		1313		1221	51077	642	18	51737
20-Oct-2023	48597		1312		1232	51141	725	18	51884
27-Oct-2023	48698		1328		1235	51261	742	18	52021
03-Nov-2023	48781		1298		1265	51344	688	18	52050
10-Nov-2023	48909		1389		1244	51542	662	17	52221
17-Nov-2023	49061		1357		1274	51692	645	17	52354
24-Nov-2023	49087		1424		1262	51773	694	17	52484
01-Dec-2023	49237		1401		1265	51903	621	17	52541
08-Dec-2023	49227		1387		1266	51880	593	17	52490
15-Dec-2023	49240		1410		1263	51913	631	17	52561
22-Dec-2023	49353		1411		1276	52040	634	17	52691
29-Dec-2023	49410		1374		1227	52011	652	17	52680

# Offenders housed in facilities for state prisoners

Week ending	In state prisons	In facilities other than state prisons						Total Inmates
		Transition centers	County prisons	Pre-rel centers	Private prisons	Inmate boot camps	Total others	
06-Jan-2023	33185	2229	4505		7255	1	13990	47175
13-Jan-2023	33197	2212	4580		7239	1	14032	47229
20-Jan-2023	33224	2195	4585		7214	1	13995	47219
27-Jan-2023	33290	2216	4577		7160	1	13954	47244
03-Feb-2023	33321	2194	4580		7136	1	13911	47232
10-Feb-2023	33392	2178	4575		7086	1	13840	47232
17-Feb-2023	33585	2178	4577		7078	1	13834	47419
24-Feb-2023	33665	2181	4589		7049	1	13820	47485
03-Mar-2023	33701	2184	4579		7054	1	13818	47519
10-Mar-2023	33777	2183	4537		7035	1	13756	47533
17-Mar-2023	33873	2187	4511		7026	1	13725	47598
24-Mar-2023	33889	2205	4545		6997	1	13748	47637
31-Mar-2023	34007	2231	4570		6989	1	13791	47798
07-Apr-2023	33971	2214	4571		6952	1	13738	47709
14-Apr-2023	33982	2160	4575		6942	1	13678	47660
21-Apr-2023	34063	2143	4536		6916	1	13596	47659
28-Apr-2023	34156	2160	4616		6901	1	13678	47834
05-May-2023	34134	2110	4645		6890	1	13646	47780
12-May-2023	33978	2190	4615		6884	1	13690	47668
19-May-2023	34127	2233	4555		6888	1	13677	47804
26-May-2023	34113	2231	4506		6889	1	13627	47740
02-Jun-2023	34064	2218	4477		6886	1	13582	47646
09-Jun-2023	34152	2191	4393		6873	1	13458	47610
16-Jun-2023	34202	2186	4352		6879	1	13418	47620
23-Jun-2023	34273	2191	4387		6875	1	13454	47727
30-Jun-2023	34378	2216	4468		6896	1	13581	47959
07-Jul-2023	34264	2185	4514		6978	1	13678	47942
14-Jul-2023	34225	2198	4468		7115	1	13782	48007
21-Jul-2023	34267	2199	4508		7150	1	13858	48125
28-Jul-2023	34265	2195	4519		7174	1	13889	48154
04-Aug-2023	34216	2213	4551		7159	1	13924	48140
11-Aug-2023	34180	2201	4578		7143	1	13923	48103
18-Aug-2023	34269	2197	4544		7167	0	13908	48177
25-Aug-2023	34271	2189	4509		7167	0	13865	48136
01-Sep-2023	34340	2192	4515		7155	0	13862	48202
08-Sep-2023	34349	2191	4448		7168	0	13807	48156
15-Sep-2023	34290	2191	4484		7243	0	13918	48208
22-Sep-2023	34364	2207	4420		7268	0	13895	48259
29-Sep-2023	34465	2210	4360		7377	0	13947	48412
06-Oct-2023	34422	2203	4338		7444	0	13985	48407
13-Oct-2023	34465	2209	4339		7530	0	14078	48543
20-Oct-2023	34460	2198	4366		7573	0	14137	48597
27-Oct-2023	34493	2204	4406		7595	0	14205	48698
03-Nov-2023	34562	2208	4404		7607	0	14219	48781
10-Nov-2023	34700	2202	4415		7592	0	14209	48909
17-Nov-2023	34818	2207	4431		7605	0	14243	49061
24-Nov-2023	34833	2191	4450		7613	0	14254	49087
01-Dec-2023	34916	2209	4494		7617	1	14321	49237
08-Dec-2023	34883	2216	4485		7642	1	14344	49227
15-Dec-2023	34920	2206	4503		7610	1	14320	49240
22-Dec-2023	34948	2235	4522		7647	1	14405	49353
29-Dec-2023	34970	2234	4530		7676	0	14440	49410

## Offenders waiting in local jails for state facilities

Week ending	Probationers waiting in jail				State prisoners waiting in jail					Assigned females
	.. for PDCs	.. for RSAT	.. for boot camps	Total	Total backlog	Not yet assigned	In adm process	Delayed transport	Ready for pickup	
06-Jan-2023	14	4	0	18	342	38	304	194	110	41
13-Jan-2023	14	4	0	18	355	37	318	195	123	45
20-Jan-2023	14	4	0	18	354	35	319	192	127	42
27-Jan-2023	14	4	0	18	321	34	287	194	93	53
03-Feb-2023	14	4	0	18	374	33	341	191	150	58
10-Feb-2023	14	4	0	18	338	32	306	189	117	47
17-Feb-2023	15	4	0	19	395	32	363	191	172	59
24-Feb-2023	15	4	0	19	380	31	349	191	158	51
03-Mar-2023	15	4	0	19	443	30	413	189	224	49
10-Mar-2023	16	4	0	20	432	29	403	178	225	50
17-Mar-2023	15	4	0	19	433	30	403	181	222	59
24-Mar-2023	15	4	1	20	484	29	455	181	274	65
31-Mar-2023	15	4	1	20	518	31	487	184	303	56
07-Apr-2023	15	4	1	20	584	30	554	188	366	56
14-Apr-2023	15	4	1	20	579	29	550	191	359	55
21-Apr-2023	14	4	1	19	610	27	583	188	395	66
28-Apr-2023	14	4	1	19	599	28	571	192	379	61
05-May-2023	14	4	1	19	628	27	601	191	410	79
12-May-2023	14	4	1	19	657	29	628	189	439	62
19-May-2023	14	4	1	19	643	27	616	190	426	56
26-May-2023	14	4	1	19	717	28	689	193	496	68
02-Jun-2023	14	4	1	19	678	26	652	197	455	54
09-Jun-2023	14	4	1	19	671	27	644	194	450	52
16-Jun-2023	14	3	1	18	705	26	679	199	480	59
23-Jun-2023	14	3	1	18	694	27	667	208	459	50
30-Jun-2023	14	3	1	18	713	27	686	203	483	66
07-Jul-2023	14	3	1	18	526	27	499	203	296	49
14-Jul-2023	14	3	1	18	445	26	419	204	215	41
21-Jul-2023	14	3	1	18	464	26	438	200	238	46
28-Jul-2023	14	3	1	18	415	26	389	192	197	54
04-Aug-2023	14	3	1	18	411	26	385	196	189	41
11-Aug-2023	14	3	1	18	332	26	306	192	114	41
18-Aug-2023	14	3	1	18	397	26	371	194	177	58
25-Aug-2023	14	3	1	18	522	27	495	197	298	83
01-Sep-2023	14	3	1	18	630	27	603	199	404	62
08-Sep-2023	14	3	1	18	540	27	513	203	310	43
15-Sep-2023	14	3	1	18	507	27	480	206	274	51
22-Sep-2023	14	3	1	18	565	26	539	205	334	64
29-Sep-2023	14	3	1	18	627	26	601	203	398	84
06-Oct-2023	14	3	1	18	704	26	678	211	467	55
13-Oct-2023	14	3	1	18	642	28	614	213	401	42
20-Oct-2023	14	3	1	18	725	31	694	214	480	58
27-Oct-2023	14	3	1	18	742	31	711	214	497	51
03-Nov-2023	14	3	1	18	688	33	655	221	434	48
10-Nov-2023	13	3	1	17	662	32	630	225	405	60
17-Nov-2023	13	3	1	17	645	34	611	223	388	61
24-Nov-2023	13	3	1	17	694	33	661	221	440	53
01-Dec-2023	13	3	1	17	621	37	584	233	351	49
08-Dec-2023	13	3	1	17	593	41	552	231	321	53
15-Dec-2023	13	3	1	17	631	40	591	237	354	65
22-Dec-2023	13	3	1	17	634	40	594	241	353	66
29-Dec-2023	13	3	1	17	652	40	612	243	369	60