

Friday Report – overview and contents

The pages in The Friday Report are about adult offenders in Georgia's prisons and jails. They contain statistical snapshots and trends in the populations and movements of offenders in the state prison system, on probation, on parole, and in local jails. Information comes from databases of the Georgia Department of Corrections (GDC) and the Board of Pardons and Paroles, and from data provided by local jailers. Information is summarized into tables in the GDC/Parole Data Warehouse, and is extracted into these pages each Friday. Pages are organized according to the table that supplied the data.

The Monthly Research Table, named "MO_RESRCH" or simply "MO", contains data about state prisoners, grouped into statistically interesting categories. The table contains one record per month, from January 2000 to the present. Despite its being "monthly", it is updated weekly, because some data trickles in for several weeks before it becomes stable history.	
Page	Contents
MO-01	Clemencies and maxouts. Monthly graph from 2000 to present shows the monthly departures from prison via actions by the Georgia Parole Board (clemencies), and via service of 100% of the court ordered sentence (maxouts)
MO-02	48 months of releases. Table shows counts and percentages of releases via clemencies and maxouts, with and without probation to follow, for each of the past 48 months.
MO-03	Methamphetamine. Monthly graph from 2000 to present shows admissions, departures, population, and percent of population of inmates with a current offense of methamphetamine possession, sale, manufacturing, or trafficking, and the changing racial composition of the methamphetamine population.
MO-04	Non-violent first incarcerants. Monthly graph from 2000 to present shows admissions, departures, population, and percent of population of inmates without violent or sex crimes, who are serving their first Georgia felony incarceration.
MO-05	Seven Deadly Sins. Monthly graph from 2000 to present shows admissions, departures, population, and percent of population of inmates convicted of kidnapping, armed robbery, rape, aggravated sodomy, aggravated sexual battery, and aggravated child molestation, for whom especially severe penalties are prescribed.
MO-06	48 months of inmate subpopulations. Table shows number and percentage of white and non-white inmates with methamphetamine offenses, and non-violent first incarcerants, and inmates convicted of the Seven Deadly Sins.
MO-07	Inmate age overview. Line graph shows the average age of the inmate population, by month from 2000 to the present. Pie chart shows the number of currently active inmates in their teens, twenties, thirties, forties, fifties, and age sixty+.
MO-08	Counts by age group. Graphs show the count, by month from 2000 to the present, of inmates in their teens, twenties, thirties, forties, fifties, and age sixty+.
MO-09	Percentages by age group. Graphs show the <i>percentages</i> , by month from 2000 to the present, of inmates in their teens, twenties, thirties, forties, fifties, and age sixty+.
MO-10	48 months of inmate ages. Table shows average age of the standing population, and counts and percentages of teens, twenties, thirties, forties, fifties, and sixty+, for each of the past 48 months.

Friday Report – overview and contents (*continued*)

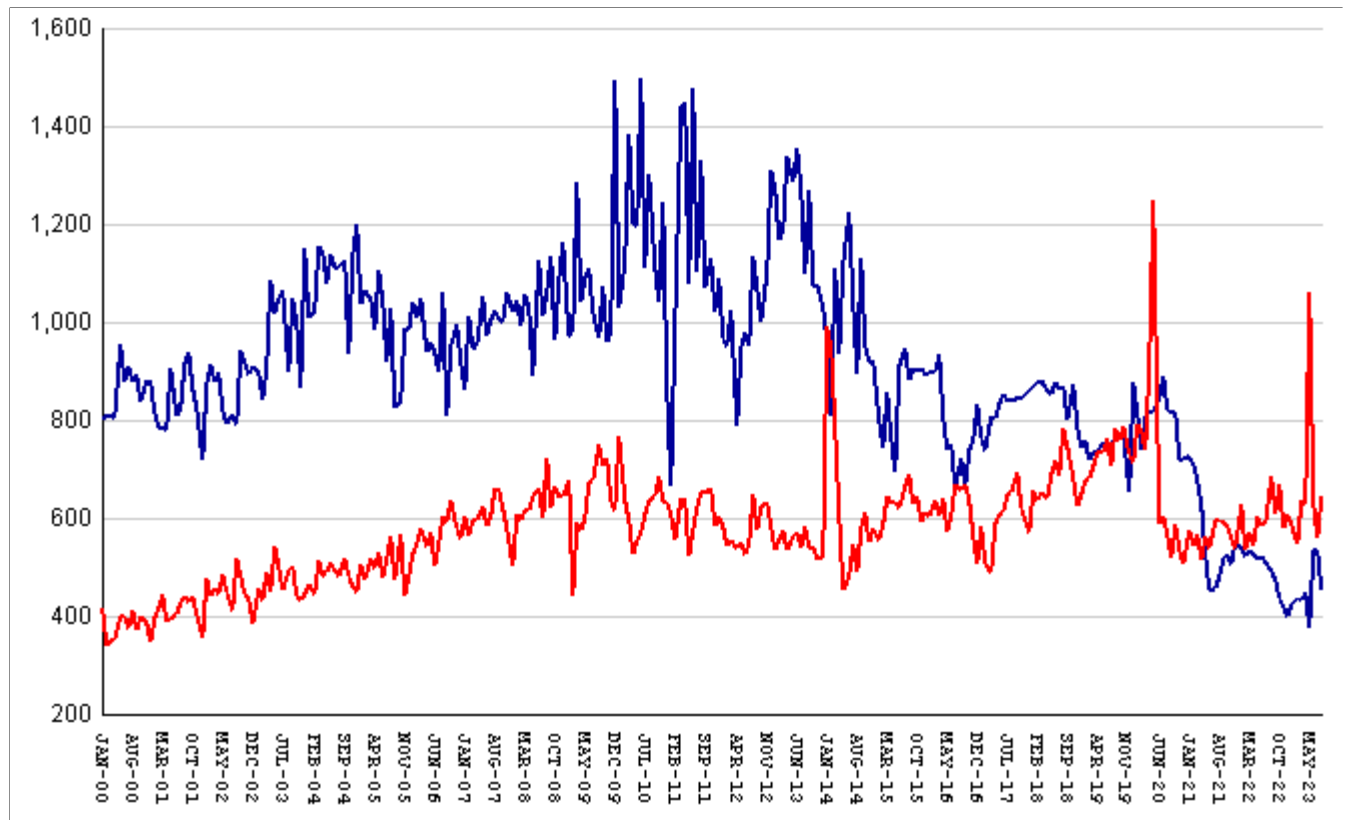
The MSR Table is based on the Management Summary Report (MSR), a snapshot report posted each week in GDC's Scribe database. MSR_RESRCH gathers that data into weekly trends, with one record for each Friday since March 20th, 2009.	
Page	Contents
MSR-01	All housed offenders. Weekly graph from March 20, 2009 to present, showing counts of inmates in state prisons, transitional centers, county prisons, private prisons, inmate boot camps, parole revocation centers, probation Residential Substance Abuse Treatment (RSAT), probation boot camps, probation detention centers, plus the inmate jail backlog and probationers in jail waiting for state facilities.
MSR-02	Probationers in jail. Weekly graph from March 20, 2009 to present, showing counts of probationers in local jails awaiting placement in probation detention centers, probation RSAT centers, and probation boot camps.
MSR-03	State inmates in jail. Weekly graph from March 20, 2009 to present, showing counts of state inmates in local jails awaiting placement in state prison facilities – including those who have not yet been assigned to a diagnostic center, those whose transportation has been delayed for some reason, and those who are ready to be picked up.
MSR-04	Female state inmates in jail. Weekly graph from March 20, 2009 to present, showing counts of female state inmates awaiting placement in a state prison for females.
MSR-05	52-week table: housed offenders. Data for each of the past 52 weeks, showing total prison inmates, parolees in revocation centers, probationers in RSAT/boot camp/detention centers, inmate jail backlog, probationers in jail waiting for facilities, with subtotals.
MSR-06	52-week table: state prisoners. Data for each of the past 52 weeks, showing inmates in state prisons, transition centers, county prisons, pre-release centers, private prisons, and inmate boot camps, with subtotals.
MSR-07	52-week table: waiting in jail. Data for each of the past 52 weeks, showing probationers waiting for detention centers, RSAT, and boot camp; and state prisoners not yet assigned to diagnostic centers, in admission process, with delayed transport, and ready for pickup, with subtotals.

The DCA table consists mainly of data submitted from each of Georgia's 140+ local jails, via the Georgia Crime Information Center (GCIC) to the Georgia Department of Community Affairs (DCA), which publishes its <u>County Jail Inmate Population Report</u> on its web site each month. GDC has collected summary statewide data from this report every month since its inception in January, 1993. The table also contains the inmate jail backlog as computed by GDC for the last Friday of each month, for comparison with the jailers' count of state inmates. Although nominally a monthly table, DCA_RESRCH is updated weekly to insure that the DCA data is correctly synchronized with the GDC jail backlog data.	
Page	Contents
DCA-01	Jail composition. Monthly graph from 1993 to the present shows trends in the numbers of unsentenced inmates, state inmates, county inmates, and other inmates.
DCA-02	Two views of jail backlog. Monthly graph from 1993 to present compares jailers' count of "state inmates" with GDC's count of the "inmate jail backlog", and explains that both are valid counts of different phenomena.
DCA-03	48-month table: local jails. Data from Georgia jailers for each of the past 48 months, showing total jail population, capacity, utilization, and number and percent of unsentenced inmates, state inmates, county inmates, and other inmates.

Releases by clemency and maxout, Jan-2000 to Aug-2023

There are two main ways of being released from a Georgia prison -- by actions of the Board of Pardons and Paroles ("Clemencies") and by service of 100% of the court-ordered sentences ("Maxouts"). "Clemency" includes paroles, reprieves, commutations, and transfer to other confinement prior to expiration of sentence.

"Other Releases" includes deaths, and sentences modified or overturned by the courts. Clemencies and maxouts may or may not be followed by periods of probation.



A. Clemency with probation to follow	falls by	52	from	460	to	408
B. Clemency only	falls by	27	from	74	to	47
C. Maxout with probation to follow	RISES BY	68	from	517	to	585
D. Maxout only (unsupervised)	RISES BY	18	from	42	to	60
E. Other releases	falls by	3	from	25	to	22
F. Total releases (A+B+C+D+E)	RISES BY	4	from	1118	to	1122
G. Total clemencies (A+B) (top line)	falls by	79	from	534	to	455
H. Total maxouts(C+D) (bottom line)	RISES BY	86	from	559	to	645
I. % of releases by clemency (G/F)	falls by	7.21%	from	47.76%	to	40.55%
J. % of releases by maxout (H/F)	RISES BY	7.49%	from	50%	to	57.49%
K. Supervised releases (A+B+C)	falls by	11	from	1051	to	1040
L. % unsupervised releases (D/F)	RISES BY	1.59%	from	3.76%	to	5.35%
M. % supervised releases (K/F)	falls by	1.32%	from	94.01%	to	92.69%

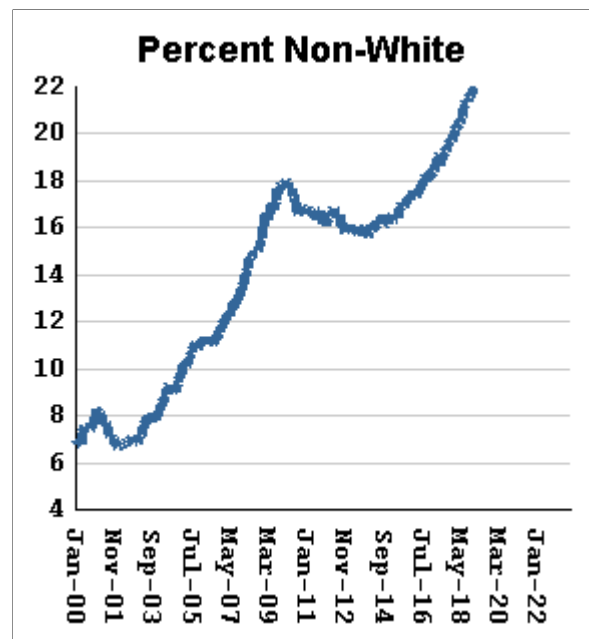
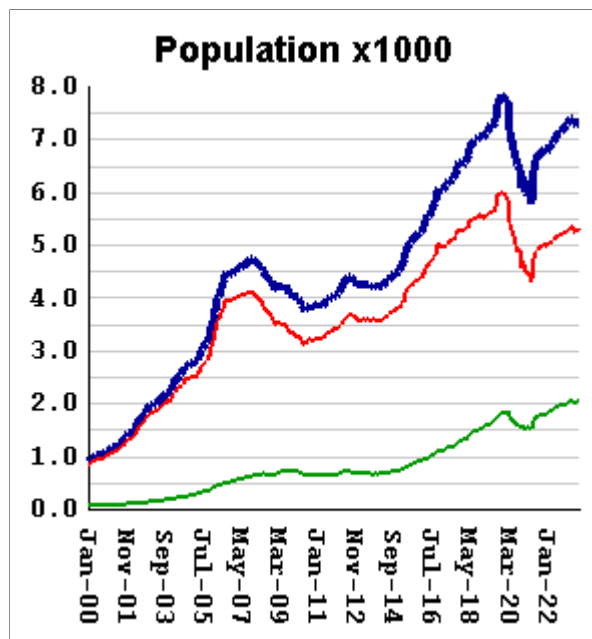
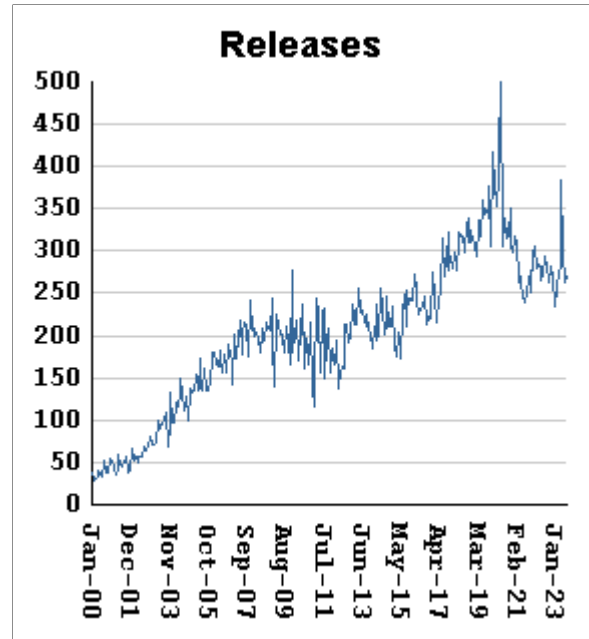
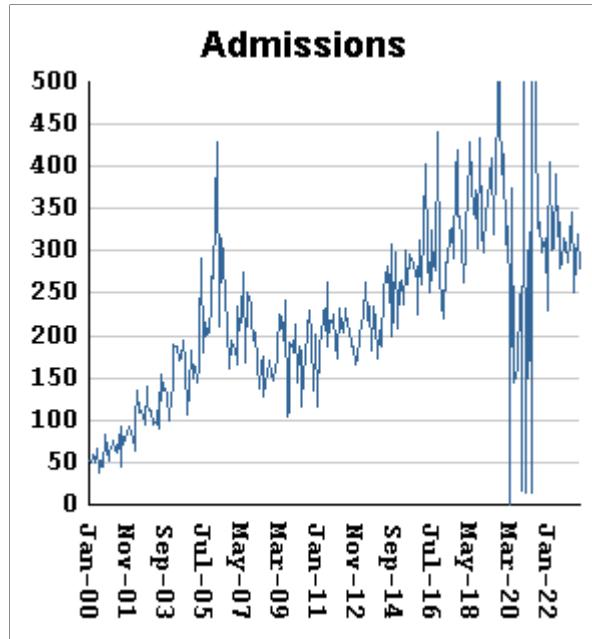
Monthly releases from prison by type of release, for the past 48 months

Month	A	B	C	D	E	F	G	H	I	J
	Clemency + Prob	Clemency Only	Maxout + Prob	Maxout Only	Other Rels	Total Releases (A+B+C+D+E)	Total Clemency (A+B)	Total Maxout (C+D)	Percent Clemency (G/F)	Percent Maxout (H/F)
Sep-19	624	146	662	99	18	1549	770	761	49.71%	49.13%
Oct-19	638	134	706	81	12	1571	772	787	49.14%	50.10%
Nov-19	575	80	639	90	16	1400	655	729	46.79%	52.07%
Dec-19	756	121	637	77	24	1615	877	714	54.30%	44.21%
Jan-20	713	102	711	79	24	1629	815	790	50.03%	48.50%
Feb-20	633	105	688	90	21	1537	738	778	48.02%	50.62%
Mar-20	673	137	658	82	22	1572	810	740	51.53%	47.07%
Apr-20	699	118	812	105	19	1753	817	917	46.61%	52.31%
May-20	677	139	1093	155	28	2092	816	1248	39.01%	59.66%
Jun-20	717	127	535	53	15	1447	844	588	58.33%	40.64%
Jul-20	739	150	557	47	28	1521	889	604	58.45%	39.71%
Aug-20	677	144	514	55	34	1424	821	569	57.65%	39.96%
Sep-20	685	132	451	66	33	1367	817	517	59.77%	37.82%
Oct-20	695	121	515	71	29	1431	816	586	57.02%	40.95%
Nov-20	606	111	482	51	21	1271	717	533	56.41%	41.94%
Dec-20	625	98	448	59	18	1248	723	507	57.93%	40.63%
Jan-21	634	92	517	57	21	1321	726	574	54.96%	43.45%
Feb-21	615	97	481	63	20	1276	712	544	55.80%	42.63%
Mar-21	572	105	496	70	16	1259	677	566	53.77%	44.96%
Apr-21	532	97	456	60	24	1169	629	516	53.81%	44.14%
May-21	447	76	508	54	21	1106	523	562	47.29%	50.81%
Jun-21	367	86	472	65	21	1011	453	537	44.81%	53.12%
Jul-21	390	67	535	62	19	1073	457	597	42.59%	55.64%
Aug-21	412	69	532	63	28	1104	481	595	43.57%	53.89%
Sep-21	446	73	524	66	32	1141	519	590	45.49%	51.71%
Oct-21	451	74	527	55	21	1128	525	582	46.54%	51.60%
Nov-21	422	83	492	66	18	1081	505	558	46.72%	51.62%
Dec-21	470	81	482	57	18	1108	551	539	49.73%	48.65%
Jan-22	462	78	551	76	26	1193	540	627	45.26%	52.56%
Feb-22	443	81	465	71	24	1084	524	536	48.34%	49.45%
Mar-22	463	70	516	55	16	1120	533	571	47.59%	50.98%
Apr-22	458	70	473	68	16	1085	528	541	48.66%	49.86%
May-22	442	77	542	63	26	1150	519	605	45.13%	52.61%
Jun-22	457	64	530	56	21	1128	521	586	46.19%	51.95%
Jul-22	444	66	528	61	14	1113	510	589	45.82%	52.92%
Aug-22	426	66	620	65	21	1198	492	685	41.07%	57.18%
Sep-22	400	75	551	59	18	1103	475	610	43.06%	55.30%
Oct-22	376	59	608	60	23	1126	435	668	38.63%	59.33%
Nov-22	365	54	523	55	19	1016	419	578	41.24%	56.89%
Dec-22	345	57	552	57	28	1039	402	609	38.69%	58.61%
Jan-23	373	53	528	58	23	1035	426	586	41.16%	56.62%
Feb-23	391	44	498	50	17	1000	435	548	43.50%	54.80%
Mar-23	375	57	574	62	24	1092	432	636	39.56%	58.24%
Apr-23	390	58	573	54	26	1101	448	627	40.69%	56.95%
May-23	331	44	937	125	20	1457	375	1062	25.74%	72.89%
Jun-23	464	70	565	63	19	1181	534	628	45.22%	53.18%
Jul-23	460	74	517	42	25	1118	534	559	47.76%	50.00%
Aug-23	408	47	585	60	22	1122	455	645	40.55%	57.49%

Inmates with meth crimes, by month, Jan-2000 to Aug-2023

Methamphetamine is one of the most addictive drugs ever known. At first it induces intense euphoria, but with continued use causes severe depression and physical deterioration, including the dental catastrophe known as "meth mouth".

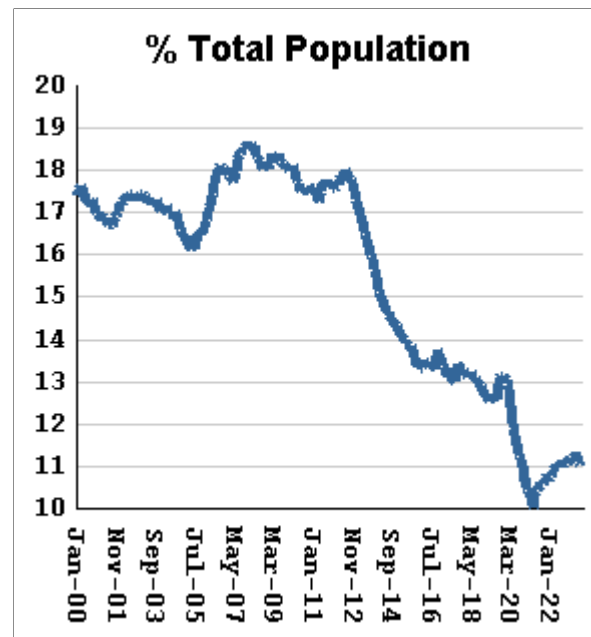
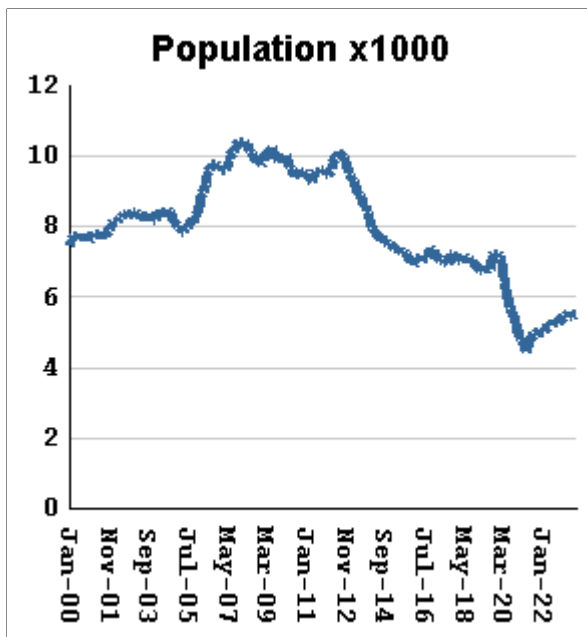
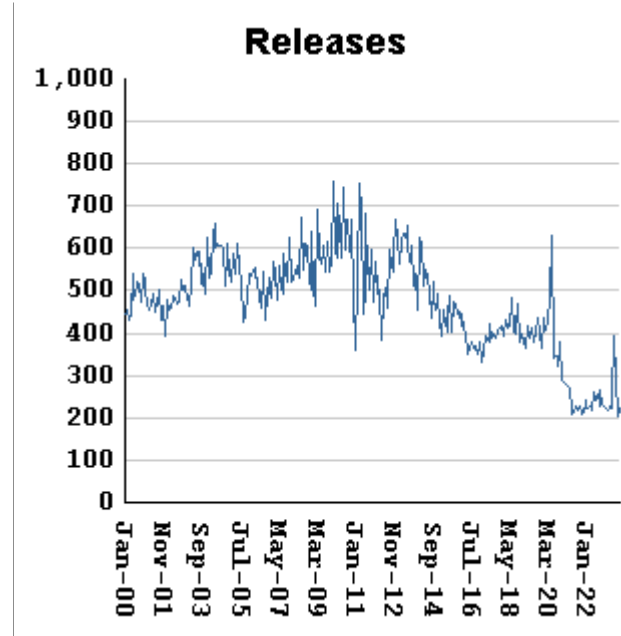
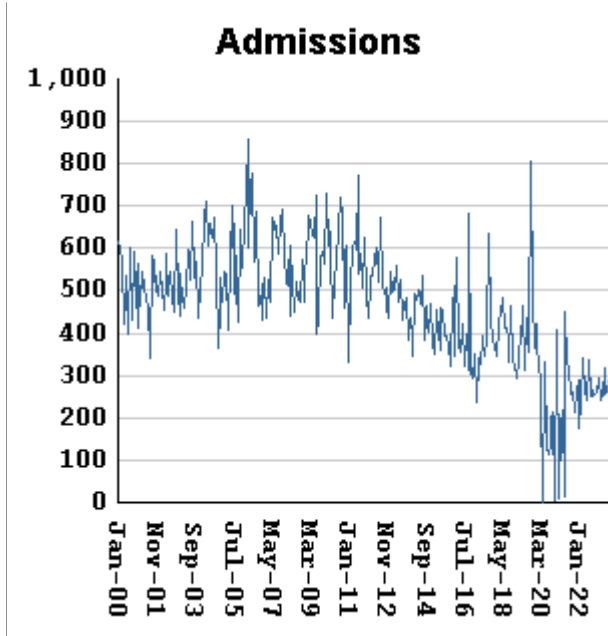
Georgia's meth epidemic peaked in 2007-2008, then declined, but is again growing. It started in the predominantly white northern counties, with blacks accounting for only about 5% of convictions. But black usage has expanded, and now accounts for about 15% of convictions.



Methamphetamine admissions	fall by	40	from	320	to	280
Methamphetamine releases	RISE BY	9	from	262	to	271
Methamphetamine population	RISES BY	9	from	7321	to	7330
Meth white population	falls by	36	from	5296	to	5260
Meth non-white population	RISES BY	9	from	2062	to	2071
Percent meth inmates who are non-white	RISES BY	.08 %	from	28.17%	to	28.25%

Non-violent first-incarcerants, by month, Jan-2000 to Aug-2023

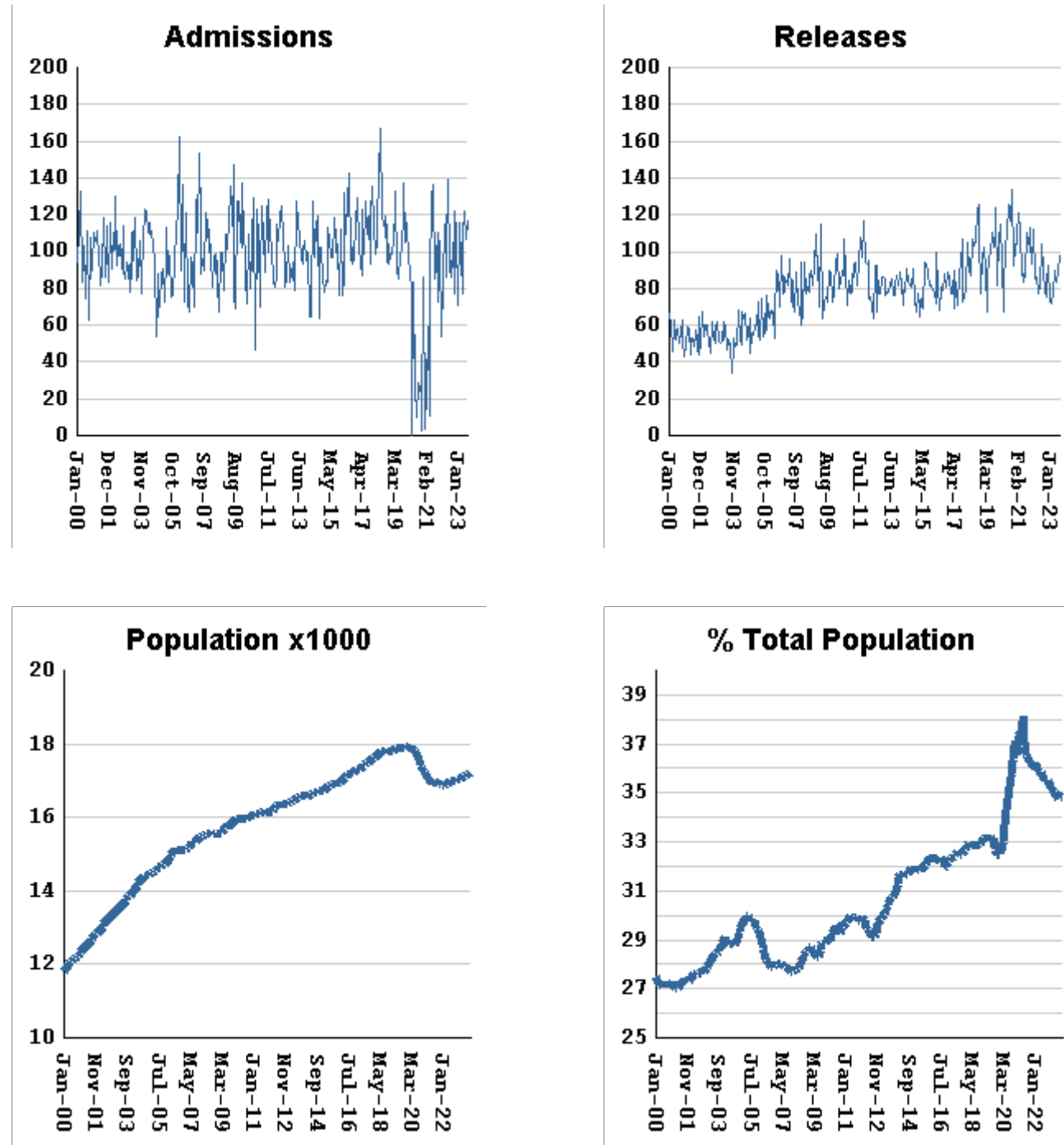
Historically, about one in six Georgia prison inmates has been a first-time incarcerant with a non-violent crime. In 2012 Georgia passed HB1176, which aimed to curb the growth of prison population by steering the least dangerous, least hardened offenders away from prison through pre-trial intervention, diversion, drug courts and treatment programs, and raising the dollar thresholds that define property felonies. The expectation is that over time, these measures will reduce the percentage of first-time non-violent incarcerants in prison.



Non-viol/1st-Incar admissions	fall by	4	from	259	to	255
Non-viol/1st-Incar releases	RISE BY	21	from	204	to	225
Non-viol/1st-Incar population	RISES BY	30	from	5489	to	5519
Non-viol/1st-Incar % of total population	RISES BY	.04 %	from	11.12%	to	11.16%

"Seven Deadly Sins" by month, Jan-2000 to Aug-2023

Tough legislation in 1995 imposed mandatory ten-year minimum terms for kidnapping, armed robbery, rape, aggravated sodomy, aggravated sexual battery, and aggravated child molestation, and a minimum of 25 years for murder. A second conviction resulted in life without parole. As predicted, longer prison terms caused population to climb steeply for about a decade. It then began to level off, as releases started catching up with admissions. The 2008 dip in percentage of total population (bottom right) was caused by the surge of methamphetamine convictions (Page MO-03). Note: these graphs include inmates convicted before 1995.



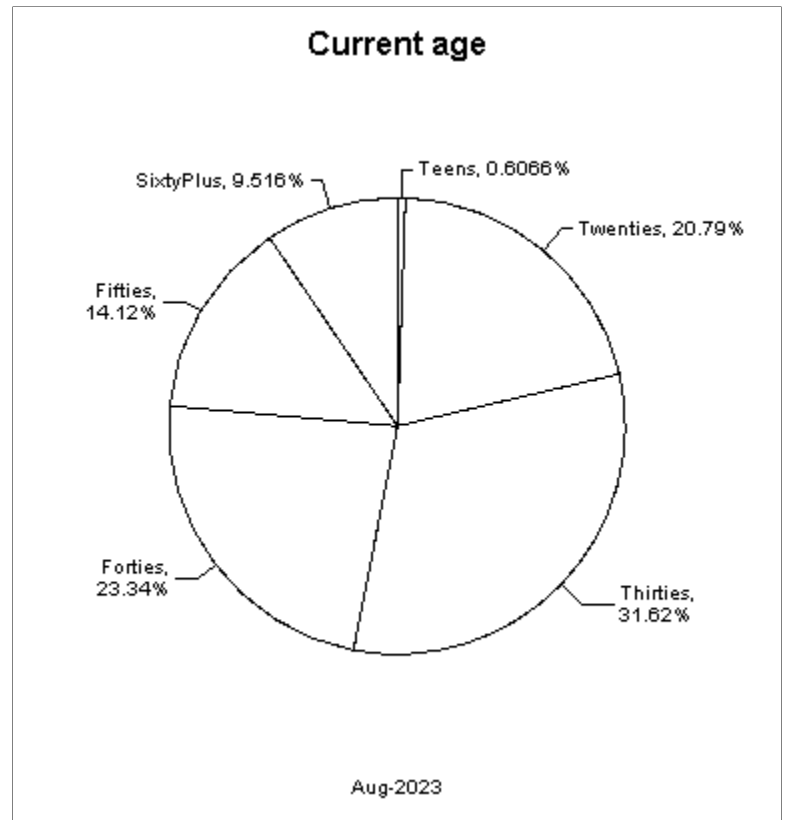
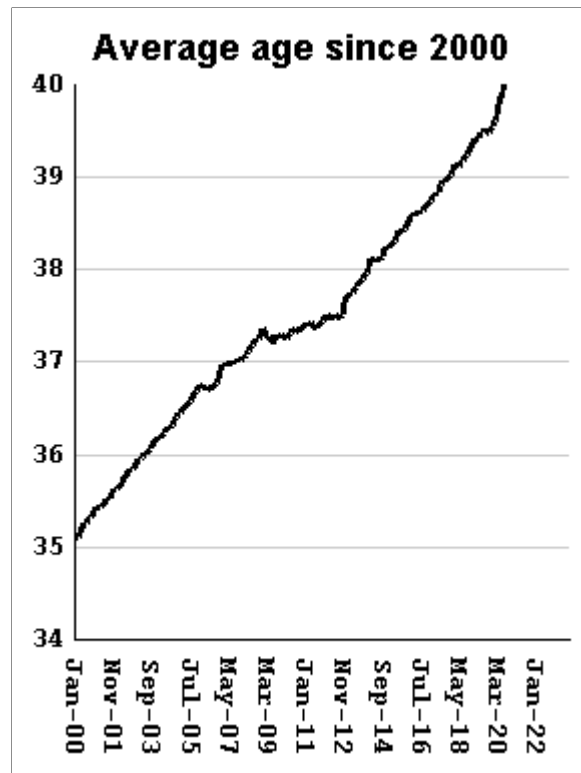
"Seven Deadly Sin" admissions	RISE BY	10	from	107	to	117
"Seven Deadly Sin" releases	RISE BY	8	from	90	to	98
"Seven Deadly Sin" population	RISES BY	19	from	17187	to	17206
"Seven Deadly Sin" % of total population	falls by	.02 %	from	34.81%	to	34.79%

Inmate subpopulation counts and percentages, for the past 48 months

Month	Methamphetamine						1st Incar Non-Violent		Seven Deadly Sins	
	Total Number	Total Percent	White Number	White Percent	Non White Number	Non White Percent	Number	Percent	Number	Percent
Sep-19	7654	13.98%	5934	77.53%	1758	22.97%	7161	13.08%	17885	32.66%
Oct-19	7745	14.06%	5954	76.88%	1800	23.24%	7238	13.14%	17898	32.50%
Nov-19	7830	14.19%	6008	76.73%	1830	23.37%	7238	13.12%	17921	32.48%
Dec-19	7827	14.18%	5991	76.54%	1843	23.55%	7224	13.09%	17929	32.49%
Jan-20	7757	14.10%	5940	76.58%	1823	23.50%	7168	13.03%	17908	32.55%
Feb-20	7733	14.10%	5891	76.18%	1848	23.90%	7105	12.95%	17906	32.64%
Mar-20	7585	13.98%	5775	76.14%	1815	23.93%	6936	12.79%	17915	33.02%
Apr-20	7170	13.66%	5434	75.79%	1741	24.28%	6450	12.29%	17836	33.98%
May-20	7003	13.53%	5305	75.75%	1703	24.32%	6151	11.88%	17816	34.41%
Jun-20	6842	13.46%	5241	76.60%	1684	24.61%	5929	11.66%	17733	34.88%
Jul-20	6656	13.37%	5023	75.47%	1638	24.61%	5698	11.45%	17617	35.39%
Aug-20	6507	13.29%	4900	75.30%	1611	24.76%	5496	11.22%	17529	35.79%
Sep-20	6430	13.30%	4911	76.38%	1592	24.76%	5376	11.12%	17420	36.03%
Oct-20	6337	13.28%	4778	75.40%	1563	24.66%	5212	10.93%	17350	36.37%
Nov-20	6050	13.01%	4539	75.02%	1514	25.02%	4927	10.60%	17243	37.08%
Dec-20	6298	13.34%	4716	74.88%	1585	25.17%	5051	10.70%	17231	36.49%
Jan-21	5996	13.05%	4489	74.87%	1510	25.18%	4782	10.41%	17126	37.28%
Feb-21	5968	13.13%	4484	75.13%	1536	25.74%	4699	10.34%	17029	37.47%
Mar-21	6027	13.28%	4473	74.22%	1557	25.83%	4647	10.24%	16977	37.39%
Apr-21	5771	13.01%	4275	74.08%	1499	25.97%	4442	10.02%	16901	38.11%
May-21	6104	13.52%	4570	74.87%	1599	26.20%	4682	10.37%	16894	37.41%
Jun-21	6364	13.86%	4713	74.06%	1686	26.49%	4800	10.45%	16941	36.90%
Jul-21	6583	14.16%	4854	73.74%	1732	26.31%	4887	10.51%	16988	36.53%
Aug-21	6655	14.26%	4909	73.76%	1758	26.42%	4923	10.55%	16963	36.36%
Sep-21	6722	14.37%	4951	73.65%	1774	26.39%	4958	10.60%	16962	36.26%
Oct-21	6743	14.41%	4967	73.66%	1779	26.38%	4959	10.59%	16922	36.15%
Nov-21	6803	14.50%	5021	73.81%	1794	26.37%	5014	10.69%	16927	36.07%
Dec-21	6815	14.48%	5028	73.78%	1790	26.27%	5057	10.75%	16936	35.99%
Jan-22	6740	14.43%	4980	73.89%	1790	26.56%	5007	10.72%	16878	36.14%
Feb-22	6764	14.47%	5005	73.99%	1812	26.79%	5029	10.76%	16877	36.11%
Mar-22	6885	14.61%	5040	73.20%	1848	26.84%	5141	10.91%	16906	35.87%
Apr-22	6906	14.63%	5052	73.15%	1857	26.89%	5185	10.99%	16915	35.84%
May-22	6946	14.70%	5079	73.12%	1887	27.17%	5170	10.94%	16935	35.84%
Jun-22	7061	14.81%	5149	72.92%	1917	27.15%	5265	11.04%	16994	35.63%
Jul-22	7086	14.82%	5156	72.76%	1933	27.28%	5260	11.00%	16981	35.51%
Aug-22	7137	14.92%	5208	72.97%	1953	27.36%	5298	11.08%	16977	35.49%
Sep-22	7153	14.93%	5182	72.45%	1973	27.58%	5281	11.02%	17005	35.49%
Oct-22	7159	14.94%	5203	72.68%	1982	27.69%	5305	11.07%	16994	35.46%
Nov-22	7194	14.92%	5250	72.98%	1983	27.56%	5338	11.07%	17041	35.34%
Dec-22	7231	14.90%	5249	72.59%	1984	27.44%	5408	11.14%	17059	35.15%
Jan-23	7282	14.97%	5281	72.52%	2017	27.70%	5433	11.17%	17057	35.06%
Feb-23	7339	15.02%	5313	72.39%	2042	27.82%	5464	11.19%	17101	35.01%
Mar-23	7408	15.07%	5360	72.35%	2050	27.67%	5557	11.30%	17117	34.81%
Apr-23	7402	15.05%	5364	72.47%	2040	27.56%	5569	11.33%	17104	34.78%
May-23	7270	14.85%	5271	72.50%	2025	27.85%	5439	11.11%	17131	34.98%
Jun-23	7263	14.75%	5238	72.12%	2027	27.91%	5434	11.04%	17170	34.88%
Jul-23	7321	14.83%	5296	72.34%	2062	28.17%	5489	11.12%	17187	34.81%
Aug-23	7330	14.82%	5260	71.76%	2071	28.25%	5519	11.16%	17206	34.79%

Overview of inmate age statistics, Jan-2000 to Aug-2023

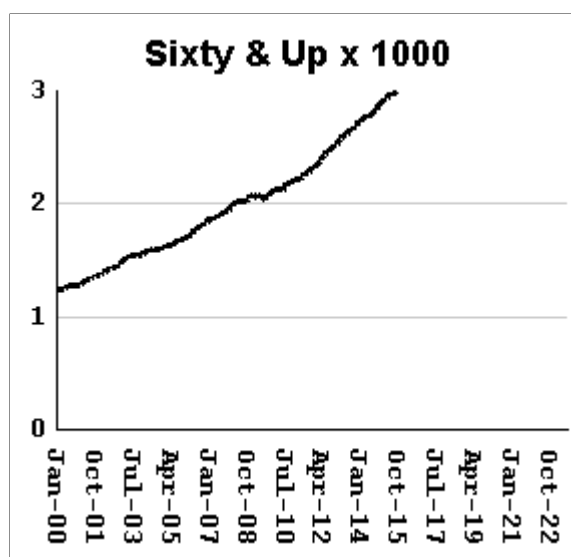
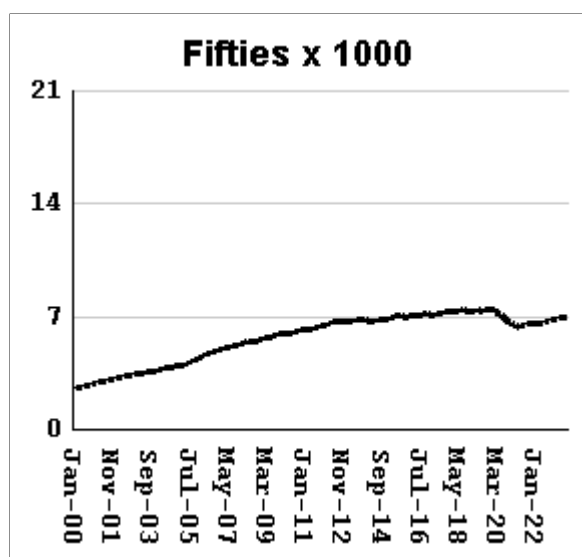
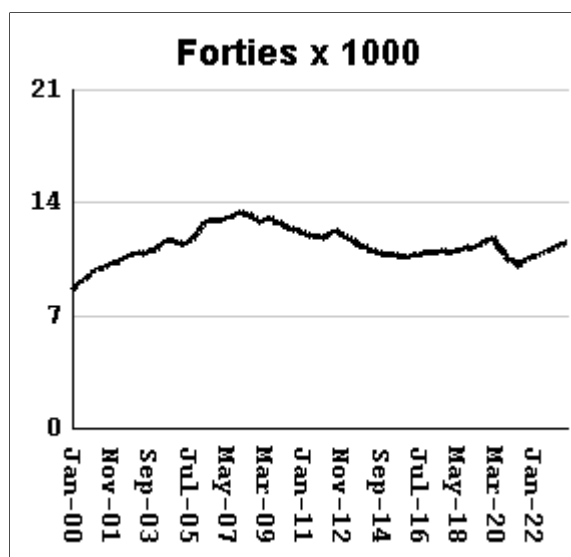
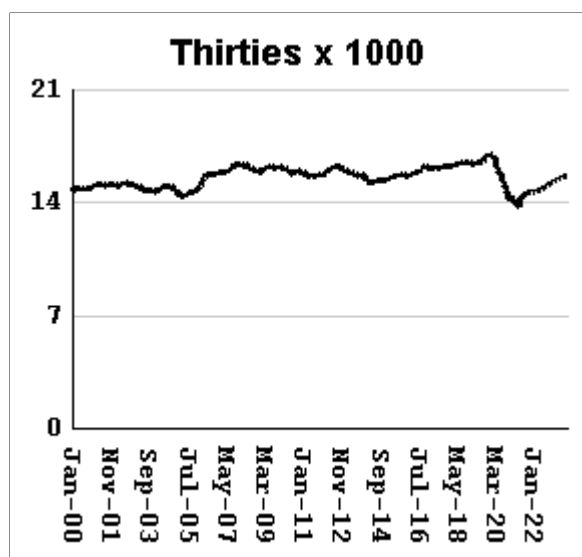
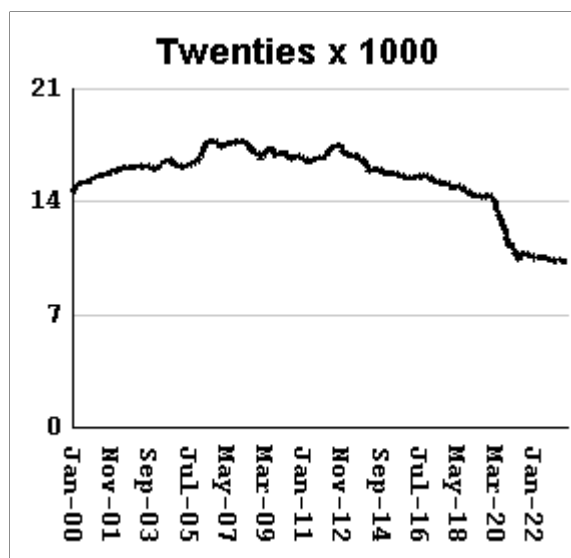
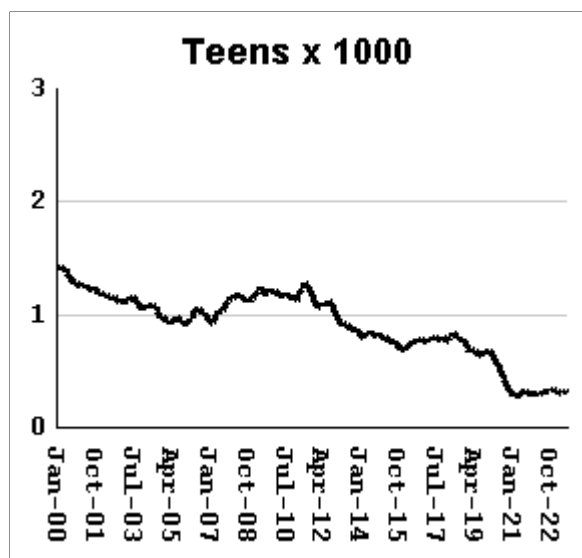
The "aging inmate population" is a concern in correctional systems throughout America, including Georgia. Here, the increase in inmate age is the result of several factors. Teenagers have been steered away from prison by increased usage of probation and other alternatives, at least for their first convictions. And there has been a surge of middle-aged male sex offenders due to the expanding "It's OK to tell" ethos. But most importantly, more severe sentence lengths and release policies have greatly increased the length of time that most offenders -- especially violent ones -- spend in prison, thereby increasing their average age.



Average age of active inmates	RISES BY	.06	from	41.21	to	41.27
Number in their teens	falls by	14	from	314	to	300
Percentage in their teens	falls by	.03%	from	.64%	to	0.61%
Number in their twenties	falls by	46	from	10,330	to	10,284
Percentage in their twenties	falls by	0.13%	from	20.92%	to	20.79%
Number in their thirties	falls by	63	from	15,699	to	15,636
Percentage in their thirties	falls by	0.17%	from	31.79%	to	31.62%
Number in their forties	RISES BY	34	from	11,511	to	11,545
Percentage in their forties	RISES BY	0.03%	from	23.31%	to	23.34%
Number in their fifties	RISES BY	1	from	6983	to	6,984
Percentage in their fifties	falls by	0.02%	from	14.14%	to	14.12%
Number age sixty and up	RISES BY	46	from	4660	to	4,706
Percentage age sixty and up	RISES BY	.08%	from	9.44%	to	9.52%

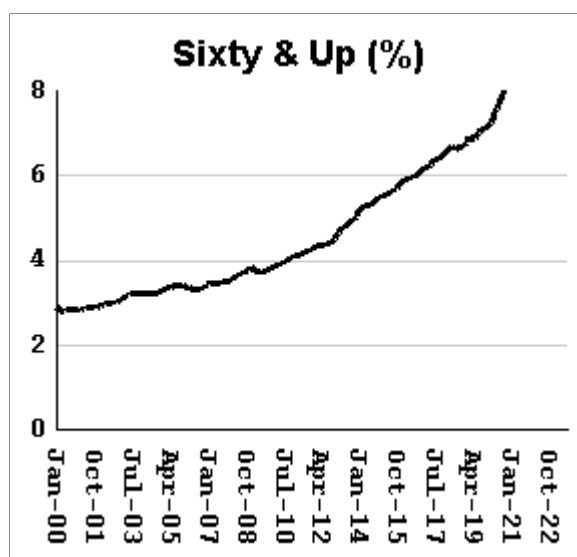
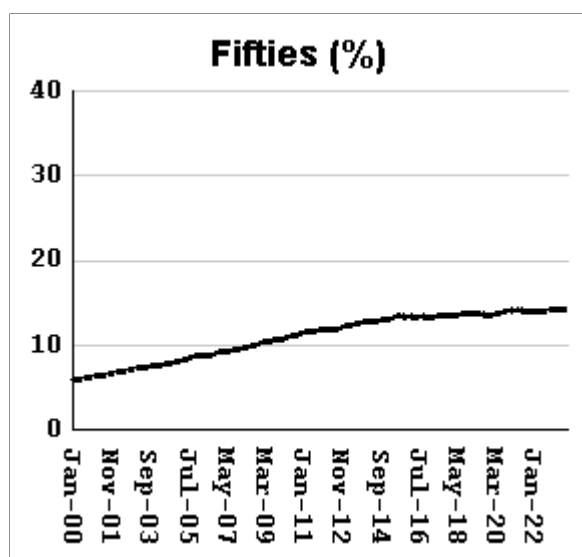
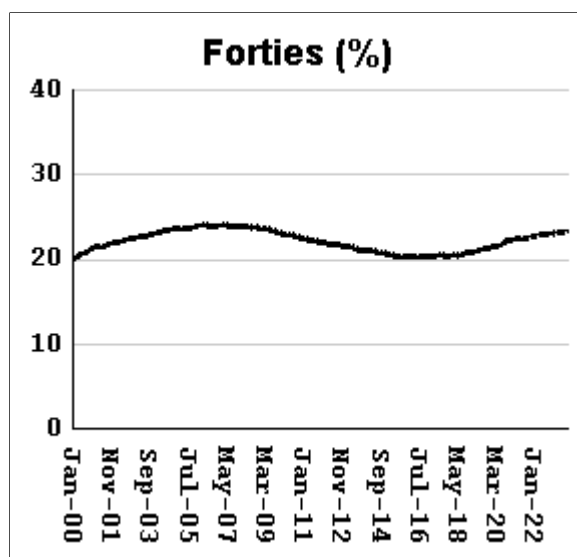
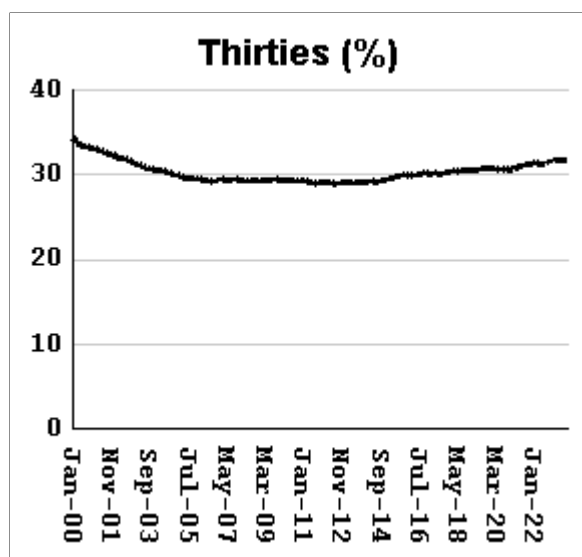
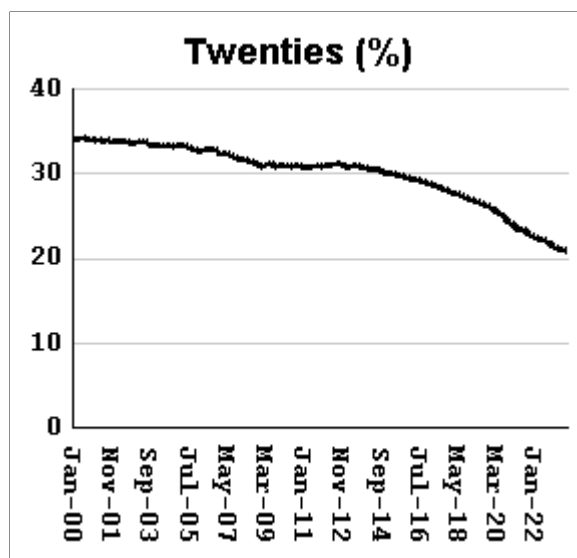
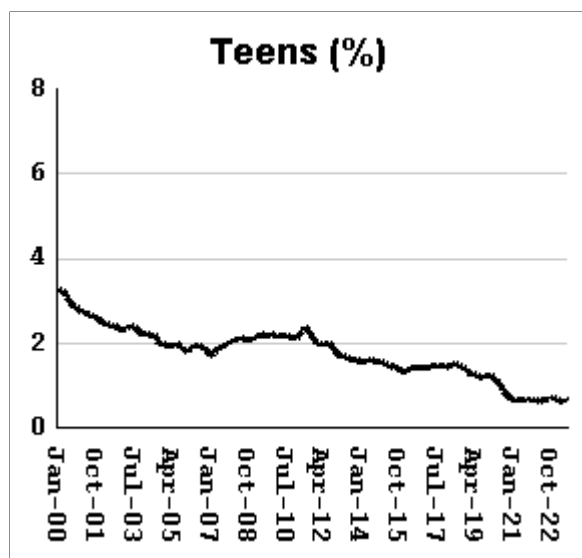
Monthly counts of inmates by age group, Jan-2000 to Aug-2023

Y-axis of Twenties/Thirties/Forties/Fifties runs from 0 to 21,000. Y-axis of Teens/Sixty+ runs from 0 to 3,000.



Monthly percentages of inmates by age group, Jan-2000 to Aug-2023

Y-axis of Twenties/Thirties/Forties/Fifties runs from 0% to 40%. Y-axis of Teens/Sixty+ runs from 0% to 8%

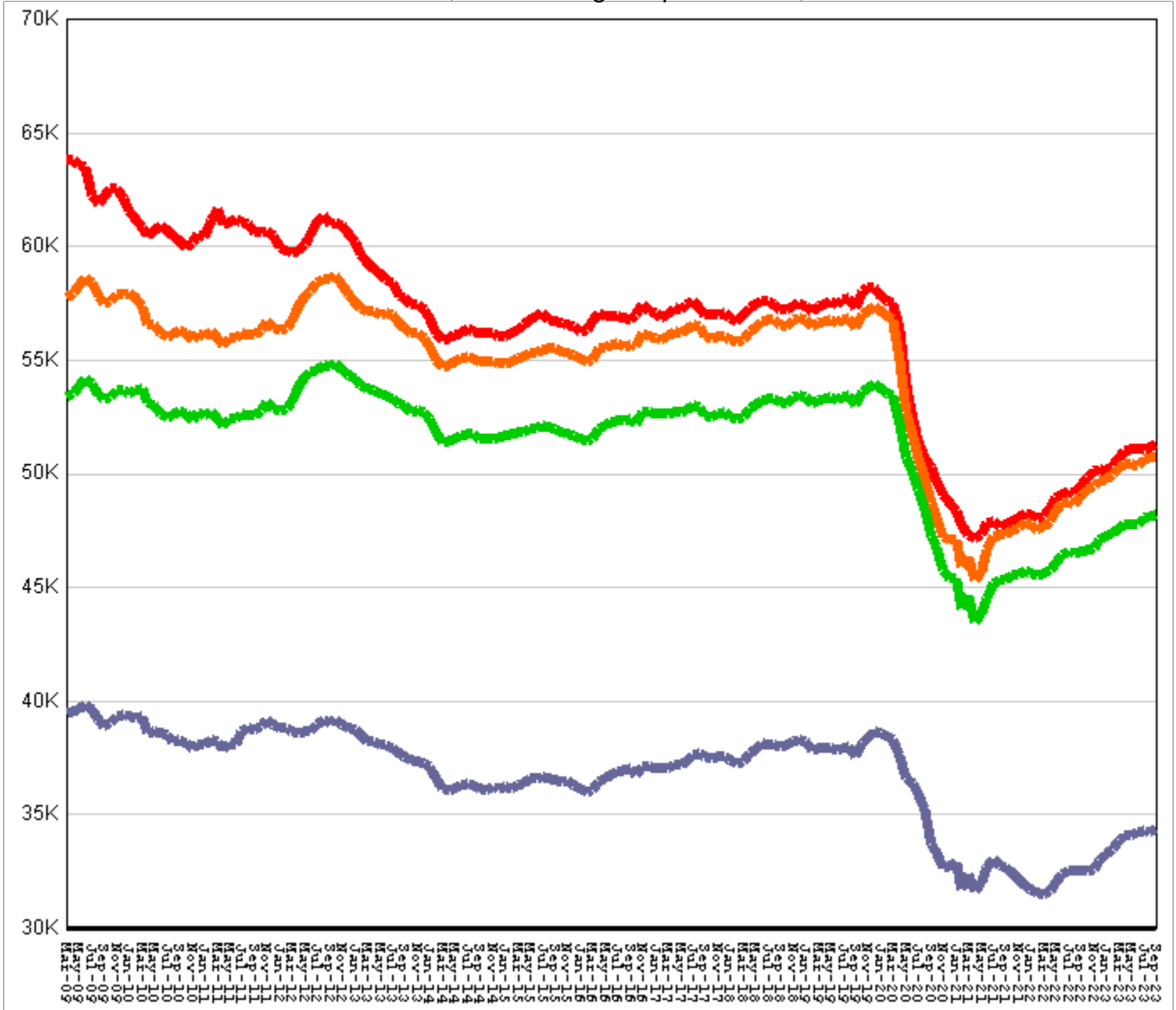


Inmate counts & percentages by age, for past 48 months

Month	Avg Age	Teens		Twenties		Thirties		Forties		Fifties		Sixty & Up	
		Num-ber	Per-cent	Num-ber	Per-cent	Num-ber	Per-cent	Num-ber	Per-cent	Num-ber	Per-cent	Num-ber	Per-cent
Sep-19	39.49	657	1.20%	14433	26.36%	16895	30.85%	11659	21.29%	7410	13.53%	3879	7.08%
Oct-19	39.48	672	1.22%	14450	26.24%	16954	30.78%	11694	21.23%	7438	13.51%	3891	7.06%
Nov-19	39.52	667	1.21%	14404	26.11%	16987	30.79%	11736	21.27%	7472	13.54%	3927	7.12%
Dec-19	39.55	683	1.24%	14329	25.96%	16957	30.72%	11803	21.39%	7485	13.56%	3949	7.16%
Jan-20	39.58	679	1.23%	14216	25.84%	16917	30.75%	11826	21.49%	7436	13.52%	3959	7.20%
Feb-20	39.61	665	1.21%	14159	25.81%	16886	30.78%	11748	21.42%	7448	13.58%	3964	7.23%
Mar-20	39.68	641	1.18%	13927	25.67%	16677	30.74%	11629	21.44%	7404	13.65%	3983	7.34%
Apr-20	39.83	577	1.10%	13348	25.43%	16087	30.64%	11311	21.55%	7221	13.76%	3966	7.55%
May-20	39.87	562	1.09%	13115	25.33%	15850	30.62%	11202	21.64%	7123	13.76%	3931	7.59%
Jun-20	39.94	534	1.05%	12838	25.25%	15647	30.78%	11099	21.83%	7031	13.83%	3916	7.70%
Jul-20	40.07	480	0.96%	12402	24.92%	15203	30.54%	10897	21.89%	6923	13.91%	3884	7.80%
Aug-20	40.14	440	0.90%	12140	24.79%	14924	30.47%	10781	22.01%	6833	13.95%	3867	7.90%
Sep-20	40.2	418	0.86%	11930	24.68%	14821	30.66%	10719	22.17%	6790	14.04%	3876	8.02%
Oct-20	40.28	390	0.82%	11616	24.35%	14561	30.52%	10581	22.18%	6703	14.05%	3862	8.10%
Nov-20	40.41	352	0.76%	11180	24.04%	14200	30.54%	10355	22.27%	6573	14.13%	3852	8.28%
Dec-20	40.37	340	0.72%	11378	24.10%	14457	30.62%	10513	22.26%	6633	14.05%	3908	8.28%
Jan-21	40.49	304	0.66%	10954	23.84%	14068	30.62%	10266	22.35%	6470	14.08%	3887	8.46%
Feb-21	40.53	291	0.64%	10799	23.76%	14080	30.98%	10264	22.58%	6425	14.14%	3872	8.52%
Mar-21	40.56	296	0.65%	10672	23.51%	14008	30.85%	10174	22.41%	6373	14.04%	3886	8.56%
Apr-21	40.69	272	0.61%	10321	23.27%	13649	30.78%	9963	22.47%	6281	14.16%	3869	8.72%
May-21	40.62	290	0.64%	10589	23.45%	14026	31.06%	10176	22.53%	6373	14.11%	3922	8.68%
Jun-21	40.59	306	0.67%	10783	23.48%	14251	31.04%	10282	22.39%	6451	14.05%	3978	8.66%
Jul-21	40.58	315	0.68%	10859	23.35%	14435	31.04%	10386	22.33%	6496	13.97%	4021	8.65%
Aug-21	40.61	316	0.68%	10804	23.16%	14534	31.15%	10474	22.45%	6516	13.97%	4044	8.67%
Sep-21	40.64	315	0.67%	10745	22.97%	14605	31.22%	10497	22.44%	6525	13.95%	4099	8.76%
Oct-21	40.68	297	0.63%	10646	22.74%	14656	31.31%	10576	22.59%	6529	13.95%	4109	8.78%
Nov-21	40.69	298	0.64%	10632	22.66%	14713	31.36%	10654	22.71%	6536	13.93%	4126	8.79%
Dec-21	40.72	302	0.64%	10603	22.53%	14741	31.33%	10692	22.72%	6569	13.96%	4154	8.83%
Jan-22	40.78	293	0.63%	10482	22.45%	14647	31.37%	10645	22.80%	6574	14.08%	4161	8.91%
Feb-22	40.79	298	0.64%	10484	22.43%	14685	31.42%	10672	22.83%	6573	14.06%	4181	8.95%
Mar-22	40.79	295	0.63%	10533	22.35%	14777	31.36%	10735	22.78%	6584	13.97%	4210	8.93%
Apr-22	40.82	285	0.60%	10526	22.30%	14770	31.29%	10791	22.86%	6606	14.00%	4226	8.95%
May-22	40.86	281	0.59%	10510	22.24%	14821	31.36%	10824	22.90%	6607	13.98%	4262	9.02%
Jun-22	40.85	306	0.64%	10596	22.22%	14936	31.32%	10934	22.93%	6638	13.92%	4289	8.99%
Jul-22	40.89	315	0.66%	10552	22.07%	14979	31.33%	10976	22.96%	6680	13.97%	4316	9.03%
Aug-22	40.92	317	0.66%	10521	21.99%	15024	31.41%	11019	23.04%	6716	14.04%	4358	9.11%
Sep-22	40.97	314	0.66%	10438	21.78%	15046	31.40%	10990	22.93%	6743	14.07%	4391	9.16%
Oct-22	40.99	321	0.67%	10379	21.66%	15131	31.57%	11044	23.04%	6758	14.10%	4408	9.20%
Nov-22	41.01	332	0.69%	10403	21.58%	15236	31.60%	11145	23.12%	6806	14.12%	4452	9.23%
Dec-22	41.04	338	0.70%	10366	21.36%	15319	31.56%	11167	23.01%	6859	14.13%	4485	9.24%
Jan-23	41.07	326	0.67%	10345	21.26%	15401	31.66%	11205	23.03%	6879	14.14%	4528	9.31%
Feb-23	41.09	315	0.64%	10347	21.18%	15469	31.67%	11295	23.12%	6883	14.09%	4579	9.37%
Mar-23	41.09	316	0.64%	10400	21.15%	15558	31.64%	11384	23.15%	6932	14.10%	4580	9.31%
Apr-23	41.12	304	0.62%	10393	21.14%	15560	31.64%	11393	23.17%	6935	14.10%	4588	9.33%
May-23	41.14	310	0.63%	10348	21.13%	15562	31.78%	11368	23.22%	6928	14.15%	4603	9.40%
Jun-23	41.17	311	0.63%	10319	20.96%	15626	31.74%	11399	23.16%	6946	14.11%	4625	9.40%
Jul-23	41.21	314	0.64%	10330	20.92%	15699	31.79%	11511	23.31%	6983	14.14%	4660	9.44%
Aug-23	41.27	300	0.61%	10284	20.79%	15636	31.62%	11545	23.34%	6984	14.12%	4706	9.52%

All housed offenders under GDC jurisdiction

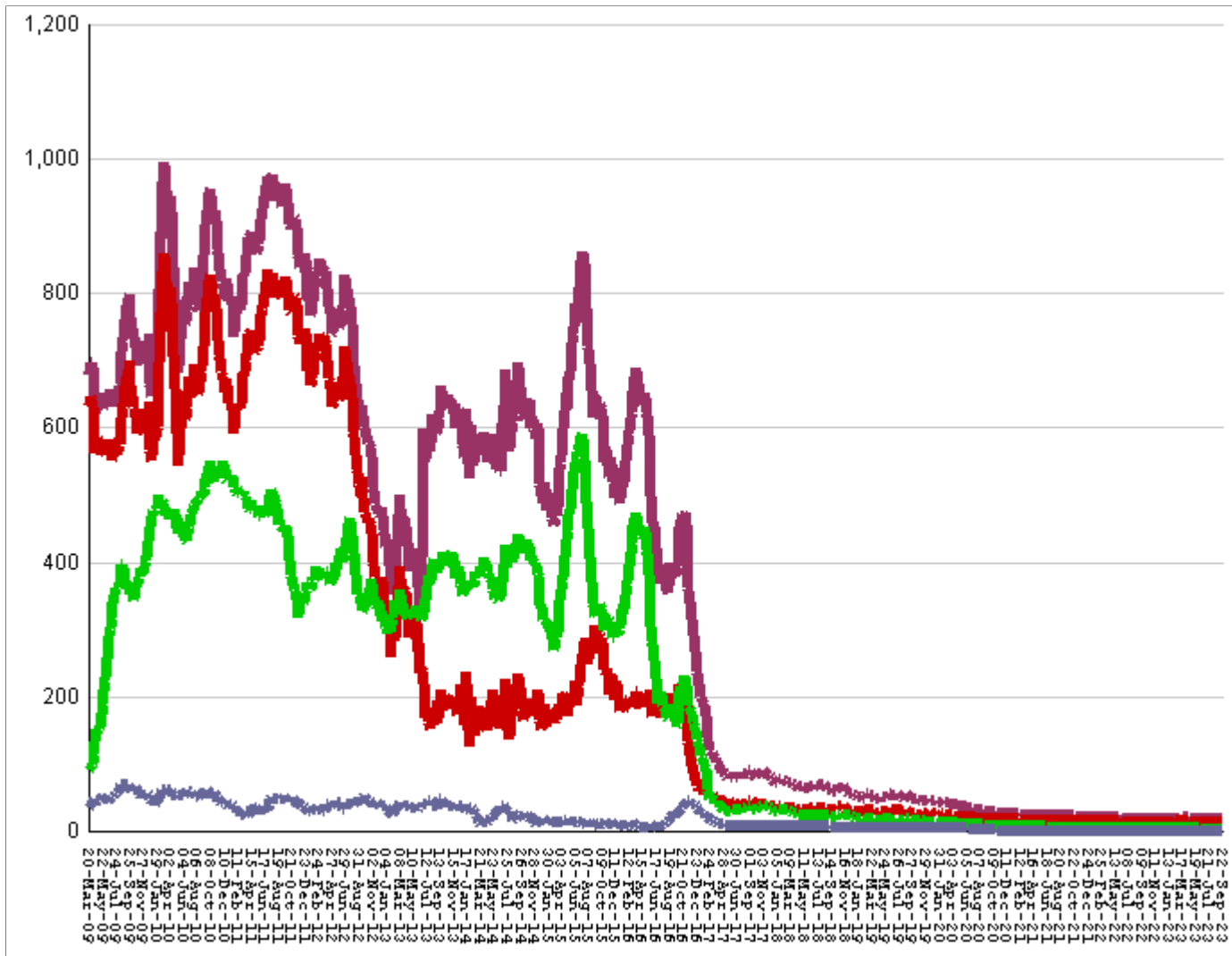
March 20, 2009 through September 22, 2023



All in bed + probs in jail + backlog	RISE BY	103	from	51,254	to	51,357
Probationers in jail	18	at	18
Inmate jail backlog	RISES BY	58	from	507	to	565
All in beds: inmate + Prob + parole	RISE BY	45	from	50,729	to	50,774
Total probationers in beds	fall by	6	from	2,521	to	2,515
Probation detention centers	fall by	21	from	1,224	to	1,203
Probation boot camps	fall by		from		to	
Probation RSAT	RISE BY	15	from	1297	to	1,312
Parole revocation centers	fall by		from		to	
All in inmate beds: state + other	RISE BY	51	from	48,208	to	48,259
Other inmate facilities :	fall by	23	from	13,918	to	13,895
Inmate boot camps	0	at	0
Private prisons	RISE BY	25	from	7243	to	7,268
County prisons	fall by	64	from	4484	to	4,420
Transitional centers	RISE BY	16	from	2191	to	2,207
In state prisons only	RISE BY	74	from	34,290	to	34,364

Probationers in jail awaiting placement in facilities

March 20, 2009 through September 22, 2023



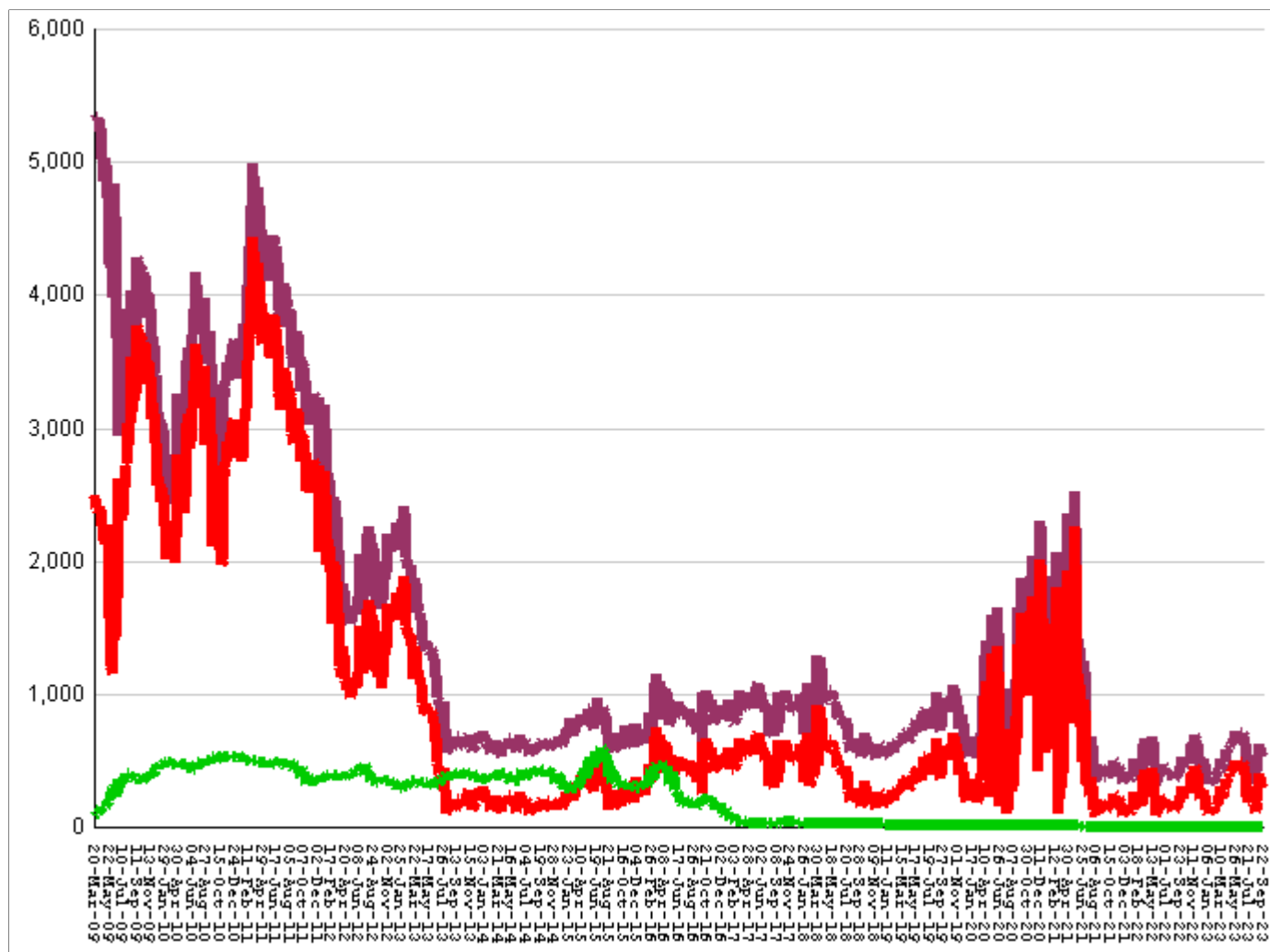
This graph shows, for each Friday since March 20 2009, the number of sentenced felony probationers who were waiting in jail for placement in facilities that GDC operates for housing probationers -- detention centers, probation residential substance abuse treatment (RSAT) centers, and probation boot camps. Counts include both those offenders sentenced directly from court, and those whose street probation was revoked.

Total probationers waiting in jail	level	at	18
... waiting for detention centers	level	at	14
... waiting for probation RSAT	level	at	3
... waiting for probation boot camps	level	at	1

The highest number of probationers waiting in jail was	994	on	05-MAR-10
... highest number waiting for detention centers was	859	on	05-MAR-10
... highest number waiting for probation RSAT was	592	on	10-JUL-15
... highest number waiting for probation boot camps was	70	on	18-SEP-09

State inmates in jail awaiting placement in facilities

March 20, 2009 through September 22, 2023



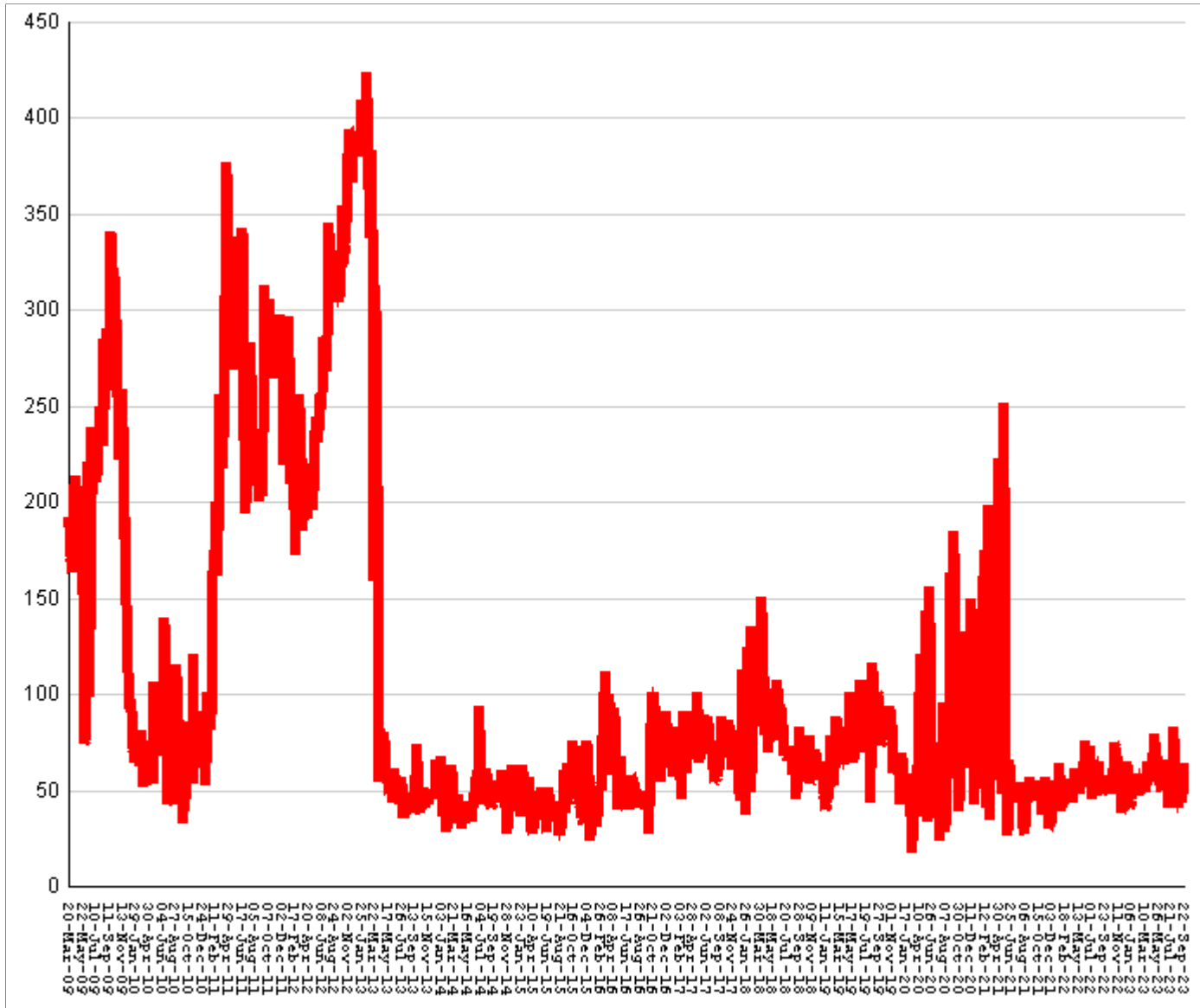
This graph shows, for each Friday since March 2009, the number of prisoners, probationers, and parolees in local jails who have been sentenced or revoked to state prison and whose documents have been received and verified by GDC. Most are almost immediately assigned to a diagnostic center, and are designated as in "admission processing". Of those a few hundred may be in the "transportation delayed" category because there is no room in the assigned diagnostic center, or because the inmate is being held for medical reasons, or for other court proceedings, or other reasons. Those remaining are "ready to be picked up".

Total state inmates waiting in jail	RISE BY	58	from	507	to	565
... not yet assigned to a diagnostic center	fall by	1	from	27	to	26
... total "in admission processing"	RISE BY	59	from	480	to	539
... with "transportation delayed"	fall by	1	from	206	to	205
... ready to be picked up	RISE BY	60	from	274	to	334

The highest number of state inmates waiting in jail was	5338	on	27-MAR-09
... highest number not asg to a diagnostic center was	2881	on	12-JUN-09
... highest number in admission processing was	4916	on	25-MAR-11
... highest number with transportation delayed was	645	on	14-JAN-11
... highest number ready to be pickup was	4435	on	25-MAR-11

Female state inmates in jail awaiting pickup

March 20, 2009 through September 22, 2023



This graph shows, for each Friday since March 2009, the number of female state prisoners in local jails who were assigned to diagnostic centers but had not yet been picked up.

Female state inmates in jails waiting picked up	RISE BY	13	from	51	to	64
The highest number of female inmates waiting in jail was		424	on	01-FEB-13		
The lowest number of female inmates waiting in jail was		17	on	20-MAR-20		

Summary of housed prisoners, parolees, and probationers

Week ending	Prison	Parole	Probation			Prison+parole+probation	Jail		Total
	Total inmates	Revocation centers	Prob RSAT	Boot camp	Detention		Inmate backlog	Probationers	Prison+parole+probation+jail
30-Sep-2022	46617		1468		1075	49160	533	18	49711
07-Oct-2022	46650		1515		1096	49261	468	18	49747
14-Oct-2022	46618		1546		1048	49212	471	18	49701
21-Oct-2022	46627		1577		1027	49231	482	18	49731
28-Oct-2022	46634		1635		1105	49374	629	18	50021
04-Nov-2022	46603		1631		1153	49387	623	18	50028
11-Nov-2022	46673		1597		1117	49387	626	18	50031
18-Nov-2022	46751		1616		1087	49454	658	18	50130
25-Nov-2022	46825		1605		1089	49519	688	18	50225
02-Dec-2022	46925		1604		1060	49589	537	18	50144
09-Dec-2022	46898		1530		1058	49486	507	18	50011
16-Dec-2022	46957		1582		1071	49610	506	18	50134
23-Dec-2022	47168		1557		1063	49788	481	18	50287
30-Dec-2022	47266		1547		1002	49815	447	18	50280
06-Jan-2023	47175		1538		973	49686	342	18	50046
13-Jan-2023	47229		1580		976	49785	355	18	50158
20-Jan-2023	47219		1568		1029	49816	354	18	50188
27-Jan-2023	47244		1556		981	49781	321	18	50120
03-Feb-2023	47232		1558		1022	49812	374	18	50204
10-Feb-2023	47232		1554		1022	49808	338	18	50164
17-Feb-2023	47419		1534		1048	50001	395	19	50415
24-Feb-2023	47485		1535		1086	50106	380	19	50505
03-Mar-2023	47519		1524		1114	50157	443	19	50619
10-Mar-2023	47533		1505		1081	50119	432	20	50571
17-Mar-2023	47598		1557		1101	50256	433	19	50708
24-Mar-2023	47637		1598		1048	50283	484	20	50787
31-Mar-2023	47798		1572		1091	50461	518	20	50999
07-Apr-2023	47709		1551		1111	50371	584	20	50975
14-Apr-2023	47660		1573		1093	50326	579	20	50925
21-Apr-2023	47659		1577		1079	50315	610	19	50944
28-Apr-2023	47834		1584		1086	50504	599	19	51122
05-May-2023	47780		1531		1092	50403	628	19	51050
12-May-2023	47668		1568		1114	50350	657	19	51026
19-May-2023	47804		1601		1108	50513	643	19	51175
26-May-2023	47740		1548		1102	50390	717	19	51126
02-Jun-2023	47646		1535		1118	50299	678	19	50996
09-Jun-2023	47610		1489		1130	50229	671	19	50919
16-Jun-2023	47620		1522		1150	50292	705	18	51015
23-Jun-2023	47727		1481		1152	50360	694	18	51072
30-Jun-2023	47959		1411		1183	50553	713	18	51284
07-Jul-2023	47942		1380		1181	50503	526	18	51047
14-Jul-2023	48007		1383		1163	50553	445	18	51016
21-Jul-2023	48125		1375		1184	50684	464	18	51166
28-Jul-2023	48154		1413		1202	50769	415	18	51202
04-Aug-2023	48140		1379		1206	50725	411	18	51154
11-Aug-2023	48103		1414		1187	50704	332	18	51054
18-Aug-2023	48177		1299		1198	50674	397	18	51089
25-Aug-2023	48136		1323		1202	50661	522	18	51201
01-Sep-2023	48202		1307		1215	50724	630	18	51372
08-Sep-2023	48156		1305		1205	50666	540	18	51224
15-Sep-2023	48208		1297		1224	50729	507	18	51254
22-Sep-2023	48259		1312		1203	50774	565	18	51357

Offenders housed in facilities for state prisoners

Week ending	In state prisons	In facilities other than state prisons						Total Inmates
		Transition centers	County prisons	Pre-rel centers	Private prisons	Inmate boot camps	Total others	
30-Sep-2022	32605	2236	4439		7337	0	14012	46617
07-Oct-2022	32565	2244	4505		7336	0	14085	46650
14-Oct-2022	32515	2230	4538		7335	0	14103	46618
21-Oct-2022	32509	2234	4529		7355	0	14118	46627
28-Oct-2022	32524	2233	4563		7314	0	14110	46634
04-Nov-2022	32530	2206	4584		7282	1	14073	46603
11-Nov-2022	32556	2228	4596		7292	1	14117	46673
18-Nov-2022	32619	2241	4616		7274	1	14132	46751
25-Nov-2022	32718	2219	4614		7273	1	14107	46825
02-Dec-2022	32792	2226	4610		7296	1	14133	46925
09-Dec-2022	32828	2225	4549		7295	1	14070	46898
16-Dec-2022	32931	2232	4516		7277	1	14026	46957
23-Dec-2022	33119	2243	4532		7273	1	14049	47168
30-Dec-2022	33205	2245	4531		7284	1	14061	47266
06-Jan-2023	33185	2229	4505		7255	1	13990	47175
13-Jan-2023	33197	2212	4580		7239	1	14032	47229
20-Jan-2023	33224	2195	4585		7214	1	13995	47219
27-Jan-2023	33290	2216	4577		7160	1	13954	47244
03-Feb-2023	33321	2194	4580		7136	1	13911	47232
10-Feb-2023	33392	2178	4575		7086	1	13840	47232
17-Feb-2023	33585	2178	4577		7078	1	13834	47419
24-Feb-2023	33665	2181	4589		7049	1	13820	47485
03-Mar-2023	33701	2184	4579		7054	1	13818	47519
10-Mar-2023	33777	2183	4537		7035	1	13756	47533
17-Mar-2023	33873	2187	4511		7026	1	13725	47598
24-Mar-2023	33889	2205	4545		6997	1	13748	47637
31-Mar-2023	34007	2231	4570		6989	1	13791	47798
07-Apr-2023	33971	2214	4571		6952	1	13738	47709
14-Apr-2023	33982	2160	4575		6942	1	13678	47660
21-Apr-2023	34063	2143	4536		6916	1	13596	47659
28-Apr-2023	34156	2160	4616		6901	1	13678	47834
05-May-2023	34134	2110	4645		6890	1	13646	47780
12-May-2023	33978	2190	4615		6884	1	13690	47668
19-May-2023	34127	2233	4555		6888	1	13677	47804
26-May-2023	34113	2231	4506		6889	1	13627	47740
02-Jun-2023	34064	2218	4477		6886	1	13582	47646
09-Jun-2023	34152	2191	4393		6873	1	13458	47610
16-Jun-2023	34202	2186	4352		6879	1	13418	47620
23-Jun-2023	34273	2191	4387		6875	1	13454	47727
30-Jun-2023	34378	2216	4468		6896	1	13581	47959
07-Jul-2023	34264	2185	4514		6978	1	13678	47942
14-Jul-2023	34225	2198	4468		7115	1	13782	48007
21-Jul-2023	34267	2199	4508		7150	1	13858	48125
28-Jul-2023	34265	2195	4519		7174	1	13889	48154
04-Aug-2023	34216	2213	4551		7159	1	13924	48140
11-Aug-2023	34180	2201	4578		7143	1	13923	48103
18-Aug-2023	34269	2197	4544		7167	0	13908	48177
25-Aug-2023	34271	2189	4509		7167	0	13865	48136
01-Sep-2023	34340	2192	4515		7155	0	13862	48202
08-Sep-2023	34349	2191	4448		7168	0	13807	48156
15-Sep-2023	34290	2191	4484		7243	0	13918	48208
22-Sep-2023	34364	2207	4420		7268	0	13895	48259

Offenders waiting in local jails for state facilities

Week ending	Probationers waiting in jail				State prisoners waiting in jail					Assigned females
	.. for PDCs	.. for RSAT	.. for boot camps	Total	Total backlog	Not yet assigned	In adm process	Delayed transport	Ready for pickup	
30-Sep-2022	14	4	0	18	533	38	495	187	308	56
07-Oct-2022	14	4	0	18	468	37	431	184	247	57
14-Oct-2022	14	4	0	18	471	36	435	187	248	48
21-Oct-2022	14	4	0	18	482	35	447	183	264	58
28-Oct-2022	14	4	0	18	629	35	594	188	406	75
04-Nov-2022	14	4	0	18	623	35	588	183	405	72
11-Nov-2022	14	4	0	18	626	34	592	187	405	53
18-Nov-2022	14	4	0	18	658	35	623	195	428	61
25-Nov-2022	14	4	0	18	688	36	652	193	459	56
02-Dec-2022	14	4	0	18	537	36	501	194	307	38
09-Dec-2022	14	4	0	18	507	37	470	191	279	41
16-Dec-2022	14	4	0	18	506	39	467	192	275	58
23-Dec-2022	14	4	0	18	481	40	441	196	245	65
30-Dec-2022	14	4	0	18	447	39	408	197	211	44
06-Jan-2023	14	4	0	18	342	38	304	194	110	41
13-Jan-2023	14	4	0	18	355	37	318	195	123	45
20-Jan-2023	14	4	0	18	354	35	319	192	127	42
27-Jan-2023	14	4	0	18	321	34	287	194	93	53
03-Feb-2023	14	4	0	18	374	33	341	191	150	58
10-Feb-2023	14	4	0	18	338	32	306	189	117	47
17-Feb-2023	15	4	0	19	395	32	363	191	172	59
24-Feb-2023	15	4	0	19	380	31	349	191	158	51
03-Mar-2023	15	4	0	19	443	30	413	189	224	49
10-Mar-2023	16	4	0	20	432	29	403	178	225	50
17-Mar-2023	15	4	0	19	433	30	403	181	222	59
24-Mar-2023	15	4	1	20	484	29	455	181	274	65
31-Mar-2023	15	4	1	20	518	31	487	184	303	56
07-Apr-2023	15	4	1	20	584	30	554	188	366	56
14-Apr-2023	15	4	1	20	579	29	550	191	359	55
21-Apr-2023	14	4	1	19	610	27	583	188	395	66
28-Apr-2023	14	4	1	19	599	28	571	192	379	61
05-May-2023	14	4	1	19	628	27	601	191	410	79
12-May-2023	14	4	1	19	657	29	628	189	439	62
19-May-2023	14	4	1	19	643	27	616	190	426	56
26-May-2023	14	4	1	19	717	28	689	193	496	68
02-Jun-2023	14	4	1	19	678	26	652	197	455	54
09-Jun-2023	14	4	1	19	671	27	644	194	450	52
16-Jun-2023	14	3	1	18	705	26	679	199	480	59
23-Jun-2023	14	3	1	18	694	27	667	208	459	50
30-Jun-2023	14	3	1	18	713	27	686	203	483	66
07-Jul-2023	14	3	1	18	526	27	499	203	296	49
14-Jul-2023	14	3	1	18	445	26	419	204	215	41
21-Jul-2023	14	3	1	18	464	26	438	200	238	46
28-Jul-2023	14	3	1	18	415	26	389	192	197	54
04-Aug-2023	14	3	1	18	411	26	385	196	189	41
11-Aug-2023	14	3	1	18	332	26	306	192	114	41
18-Aug-2023	14	3	1	18	397	26	371	194	177	58
25-Aug-2023	14	3	1	18	522	27	495	197	298	83
01-Sep-2023	14	3	1	18	630	27	603	199	404	62
08-Sep-2023	14	3	1	18	540	27	513	203	310	43
15-Sep-2023	14	3	1	18	507	27	480	206	274	51
22-Sep-2023	14	3	1	18	565	26	539	205	334	64