

# Friday Report – overview and contents

The pages in The Friday Report are about adult offenders in Georgia's prisons and jails. They contain statistical snapshots and trends in the populations and movements of offenders in the state prison system, on probation, on parole, and in local jails. Information comes from databases of the Georgia Department of Corrections (GDC) and the Board of Pardons and Paroles, and from data provided by local jailers. Information is summarized into tables in the GDC/Parole Data Warehouse, and is extracted into these pages each Friday. Pages are organized according to the table that supplied the data.

The Monthly Research Table, named "MO_RESRCH" or simply "MO", contains data about state prisoners, grouped into statistically interesting categories. The table contains one record per month, from January 2000 to the present. Despite its being "monthly", it is updated weekly, because some data trickles in for several weeks before it becomes stable history.	
Page	Contents
MO-01	Clemencies and maxouts. Monthly graph from 2000 to present shows the monthly departures from prison via actions by the Georgia Parole Board (clemencies), and via service of 100% of the court ordered sentence (maxouts)
MO-02	48 months of releases. Table shows counts and percentages of releases via clemencies and maxouts, with and without probation to follow, for each of the past 48 months.
MO-03	Methamphetamine. Monthly graph from 2000 to present shows admissions, departures, population, and percent of population of inmates with a current offense of methamphetamine possession, sale, manufacturing, or trafficking, and the changing racial composition of the methamphetamine population.
MO-04	Non-violent first incarcerants. Monthly graph from 2000 to present shows admissions, departures, population, and percent of population of inmates without violent or sex crimes, who are serving their first Georgia felony incarceration.
MO-05	Seven Deadly Sins. Monthly graph from 2000 to present shows admissions, departures, population, and percent of population of inmates convicted of kidnapping, armed robbery, rape, aggravated sodomy, aggravated sexual battery, and aggravated child molestation, for whom especially severe penalties are prescribed.
MO-06	48 months of inmate subpopulations. Table shows number and percentage of white and non-white inmates with methamphetamine offenses, and non-violent first incarcerants, and inmates convicted of the Seven Deadly Sins.
MO-07	Inmate age overview. Line graph shows the average age of the inmate population, by month from 2000 to the present. Pie chart shows the number of currently active inmates in their teens, twenties, thirties, forties, fifties, and age sixty+.
MO-08	Counts by age group. Graphs show the count, by month from 2000 to the present, of inmates in their teens, twenties, thirties, forties, fifties, and age sixty+.
MO-09	Percentages by age group. Graphs show the <i>percentages</i> , by month from 2000 to the present, of inmates in their teens, twenties, thirties, forties, fifties, and age sixty+.
MO-10	48 months of inmate ages. Table shows average age of the standing population, and counts and percentages of teens, twenties, thirties, forties, fifties, and sixty+, for each of the past 48 months.

# Friday Report – overview and contents (*continued*)

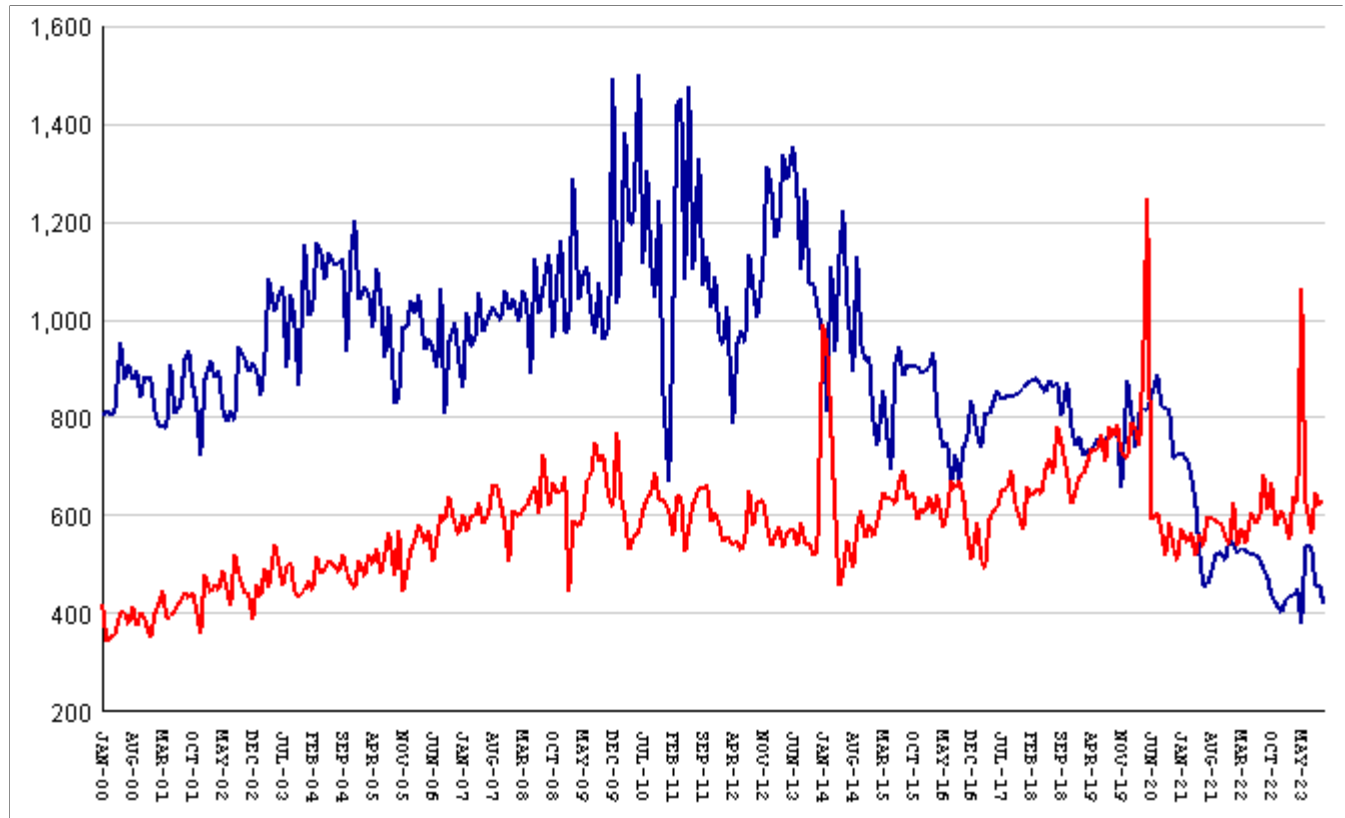
The MSR Table is based on the Management Summary Report (MSR), a snapshot report posted each week in GDC's Scribe database. MSR_RESRCH gathers that data into weekly trends, with one record for each Friday since March 20th, 2009.	
Page	Contents
MSR-01	All housed offenders. Weekly graph from March 20, 2009 to present, showing counts of inmates in state prisons, transitional centers, county prisons, private prisons, inmate boot camps, parole revocation centers, probation Residential Substance Abuse Treatment (RSAT), probation boot camps, probation detention centers, plus the inmate jail backlog and probationers in jail waiting for state facilities.
MSR-02	Probationers in jail. Weekly graph from March 20, 2009 to present, showing counts of probationers in local jails awaiting placement in probation detention centers, probation RSAT centers, and probation boot camps.
MSR-03	State inmates in jail. Weekly graph from March 20, 2009 to present, showing counts of state inmates in local jails awaiting placement in state prison facilities – including those who have not yet been assigned to a diagnostic center, those whose transportation has been delayed for some reason, and those who are ready to be picked up.
MSR-04	Female state inmates in jail. Weekly graph from March 20, 2009 to present, showing counts of female state inmates awaiting placement in a state prison for females.
MSR-05	52-week table: housed offenders. Data for each of the past 52 weeks, showing total prison inmates, parolees in revocation centers, probationers in RSAT/boot camp/detention centers, inmate jail backlog, probationers in jail waiting for facilities, with subtotals.
MSR-06	52-week table: state prisoners. Data for each of the past 52 weeks, showing inmates in state prisons, transition centers, county prisons, pre-release centers, private prisons, and inmate boot camps, with subtotals.
MSR-07	52-week table: waiting in jail. Data for each of the past 52 weeks, showing probationers waiting for detention centers, RSAT, and boot camp; and state prisoners not yet assigned to diagnostic centers, in admission process, with delayed transport, and ready for pickup, with subtotals.

The DCA table consists mainly of data submitted from each of Georgia's 140+ local jails, via the Georgia Crime Information Center (GCIC) to the Georgia Department of Community Affairs (DCA), which publishes its <u><a href="#">County Jail Inmate Population Report</a></u> on its web site each month. GDC has collected summary statewide data from this report every month since its inception in January, 1993. The table also contains the inmate jail backlog as computed by GDC for the last Friday of each month, for comparison with the jailers' count of state inmates. Although nominally a monthly table, DCA_RESRCH is updated weekly to insure that the DCA data is correctly synchronized with the GDC jail backlog data.	
Page	Contents
DCA-01	Jail composition. Monthly graph from 1993 to the present shows trends in the numbers of unsentenced inmates, state inmates, county inmates, and other inmates.
DCA-02	Two views of jail backlog. Monthly graph from 1993 to present compares jailers' count of "state inmates" with GDC's count of the "inmate jail backlog", and explains that both are valid counts of different phenomena.
DCA-03	48-month table: local jails. Data from Georgia jailers for each of the past 48 months, showing total jail population, capacity, utilization, and number and percent of unsentenced inmates, state inmates, county inmates, and other inmates.

## Releases by clemency and maxout, Jan-2000 to Oct-2023

There are two main ways of being released from a Georgia prison -- by actions of the Board of Pardons and Paroles ("Clemencies") and by service of 100% of the court-ordered sentences ("Maxouts"). "Clemency" includes paroles, reprieves, commutations, and transfer to other confinement prior to expiration of sentence.

"Other Releases" includes deaths, and sentences modified or overturned by the courts. Clemencies and maxouts may or may not be followed by periods of probation.



A. Clemency with probation to follow	falls by	44	from	405	to	361
B. Clemency only	...	...	...	level	at	54
C. Maxout with probation to follow	RISES BY	2	from	576	to	578
D. Maxout only (unsupervised)	RISES BY	7	from	46	to	53
E. Other releases	RISES BY	21	from	10	to	31
F. Total releases (A+B+C+D+E)	falls by	14	from	1091	to	1077
<b>G. Total clemencies (A+B) (top line)</b>	<b>falls by</b>	<b>44</b>	<b>from</b>	<b>459</b>	<b>to</b>	<b>415</b>
<b>H. Total maxouts(C+D) (bottom line)</b>	<b>RISES BY</b>	<b>9</b>	<b>from</b>	<b>622</b>	<b>to</b>	<b>631</b>
I. % of releases by clemency (G/F)	falls by	3.54%	from	42.07%	to	38.53%
J. % of releases by maxout (H/F)	RISES BY	1.58%	from	57.01%	to	58.59%
K. Supervised releases (A+B+C)	falls by	42	from	1035	to	993
L. % unsupervised releases (D/F)	RISES BY	.7%	from	4.22%	to	4.92%
M. % supervised releases (K/F)	falls by	2.67%	from	94.87%	to	92.2%

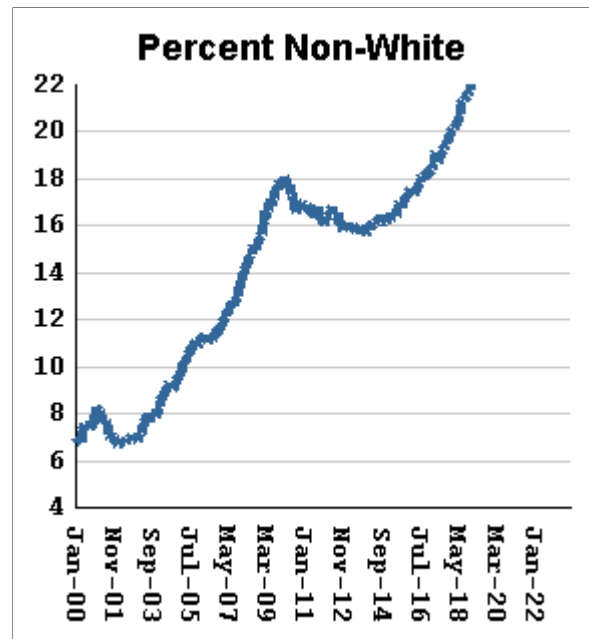
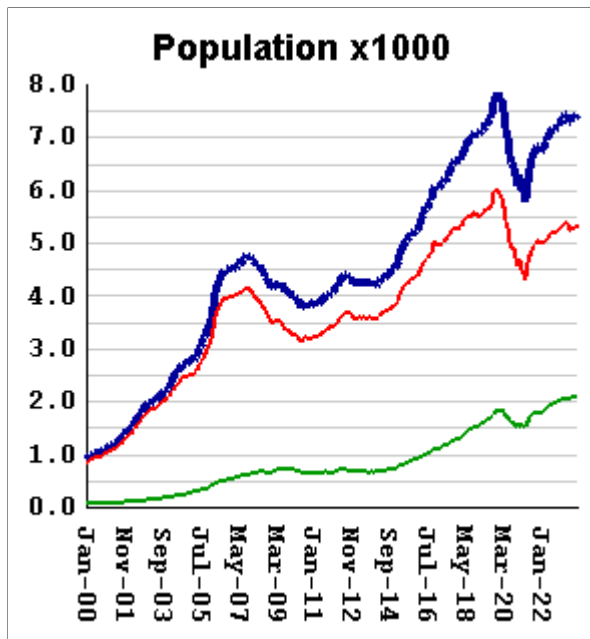
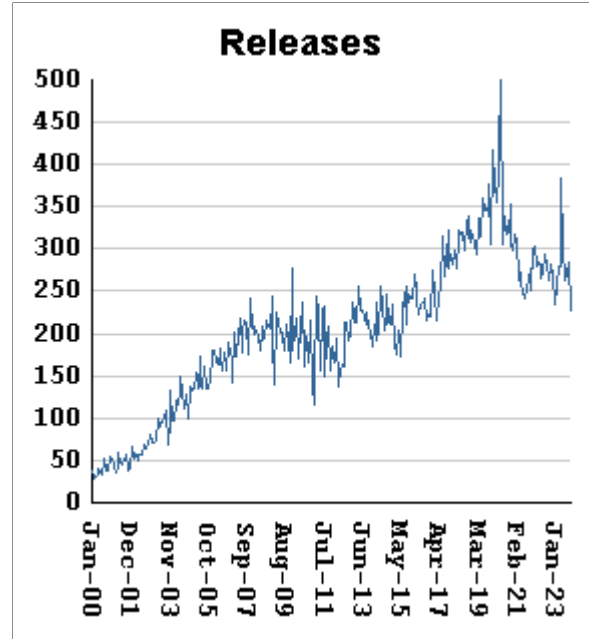
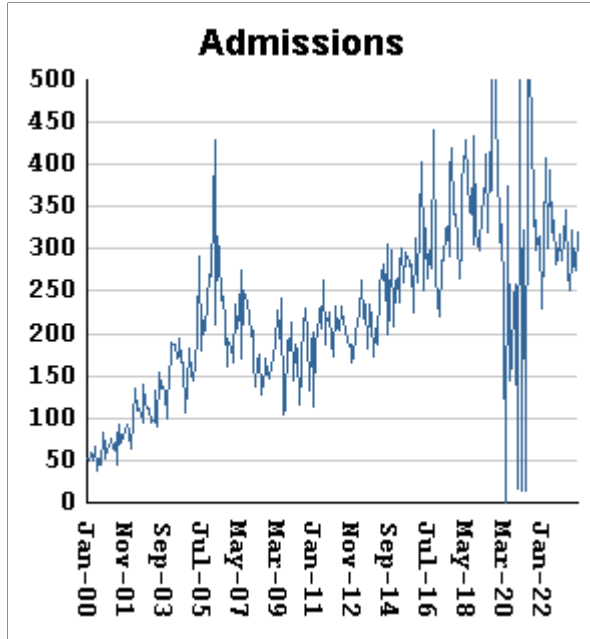
## Monthly releases from prison by type of release, for the past 48 months

Month	A	B	C	D	E	F	G	H	I	J
	Clemency + Prob	Clemency Only	Maxout + Prob	Maxout Only	Other Rels	Total Releases (A+B+C+D+E)	Total Clemency (A+B)	Total Maxout (C+D)	Percent Clemency (G/F)	Percent Maxout (H/F)
Nov-19	575	80	639	90	16	1400	655	729	46.79%	52.07%
Dec-19	755	122	636	78	24	1615	877	714	54.30%	44.21%
Jan-20	714	101	709	81	24	1629	815	790	50.03%	48.50%
Feb-20	633	105	688	90	21	1537	738	778	48.02%	50.62%
Mar-20	672	138	658	82	22	1572	810	740	51.53%	47.07%
Apr-20	699	118	812	105	19	1753	817	917	46.61%	52.31%
May-20	677	139	1093	155	28	2092	816	1248	39.01%	59.66%
Jun-20	717	127	535	53	15	1447	844	588	58.33%	40.64%
Jul-20	739	150	557	47	28	1521	889	604	58.45%	39.71%
Aug-20	676	145	514	55	34	1424	821	569	57.65%	39.96%
Sep-20	685	132	450	66	33	1366	817	516	59.81%	37.77%
Oct-20	695	121	515	71	29	1431	816	586	57.02%	40.95%
Nov-20	606	111	481	52	21	1271	717	533	56.41%	41.94%
Dec-20	624	99	447	59	18	1247	723	506	57.98%	40.58%
Jan-21	635	91	517	57	21	1321	726	574	54.96%	43.45%
Feb-21	614	98	480	64	20	1276	712	544	55.80%	42.63%
Mar-21	571	106	494	72	16	1259	677	566	53.77%	44.96%
Apr-21	533	96	456	60	24	1169	629	516	53.81%	44.14%
May-21	447	76	508	54	21	1106	523	562	47.29%	50.81%
Jun-21	367	86	472	65	21	1011	453	537	44.81%	53.12%
Jul-21	390	67	535	62	19	1073	457	597	42.59%	55.64%
Aug-21	411	70	531	63	28	1103	481	594	43.61%	53.85%
Sep-21	445	74	524	66	32	1141	519	590	45.49%	51.71%
Oct-21	451	74	527	55	21	1128	525	582	46.54%	51.60%
Nov-21	423	82	492	66	18	1081	505	558	46.72%	51.62%
Dec-21	470	81	482	57	18	1108	551	539	49.73%	48.65%
Jan-22	462	78	552	75	26	1193	540	627	45.26%	52.56%
Feb-22	444	80	465	71	24	1084	524	536	48.34%	49.45%
Mar-22	464	69	515	56	16	1120	533	571	47.59%	50.98%
Apr-22	457	71	473	68	16	1085	528	541	48.66%	49.86%
May-22	441	77	541	63	26	1148	518	604	45.12%	52.61%
Jun-22	457	64	529	57	21	1128	521	586	46.19%	51.95%
Jul-22	444	66	528	61	14	1113	510	589	45.82%	52.92%
Aug-22	427	65	619	66	21	1198	492	685	41.07%	57.18%
Sep-22	400	75	550	59	18	1102	475	609	43.10%	55.26%
Oct-22	376	59	606	61	23	1125	435	667	38.67%	59.29%
Nov-22	365	54	524	54	19	1016	419	578	41.24%	56.89%
Dec-22	345	57	553	56	28	1039	402	609	38.69%	58.61%
Jan-23	373	53	527	59	23	1035	426	586	41.16%	56.62%
Feb-23	390	44	499	49	17	999	434	548	43.44%	54.85%
Mar-23	376	56	573	63	24	1092	432	636	39.56%	58.24%
Apr-23	391	57	573	54	26	1101	448	627	40.69%	56.95%
May-23	330	45	939	123	20	1457	375	1062	25.74%	72.89%
Jun-23	464	70	568	60	19	1181	534	628	45.22%	53.18%
Jul-23	460	74	516	43	25	1118	534	559	47.76%	50.00%
Aug-23	409	46	587	58	22	1122	455	645	40.55%	57.49%
Sep-23	405	54	576	46	10	1091	459	622	42.07%	57.01%
Oct-23	361	54	578	53	31	1077	415	631	38.53%	58.59%

## Inmates with meth crimes, by month, Jan-2000 to Oct-2023

Methamphetamine is one of the most addictive drugs ever known. At first it induces intense euphoria, but with continued use causes severe depression and physical deterioration, including the dental catastrophe known as "meth mouth".

Georgia's meth epidemic peaked in 2007-2008, then declined, but is again growing. It started in the predominantly white northern counties, with blacks accounting for only about 5% of convictions. But black usage has expanded, and now accounts for about 15% of convictions.



Methamphetamine admissions

RISE BY 45 from 274 to 319

Methamphetamine releases

fall by 56 from 284 to 228

Methamphetamine population

RISES BY 91 from 7346 to 7437

Meth white population

RISES BY 66 from 5269 to 5335

Meth non-white population

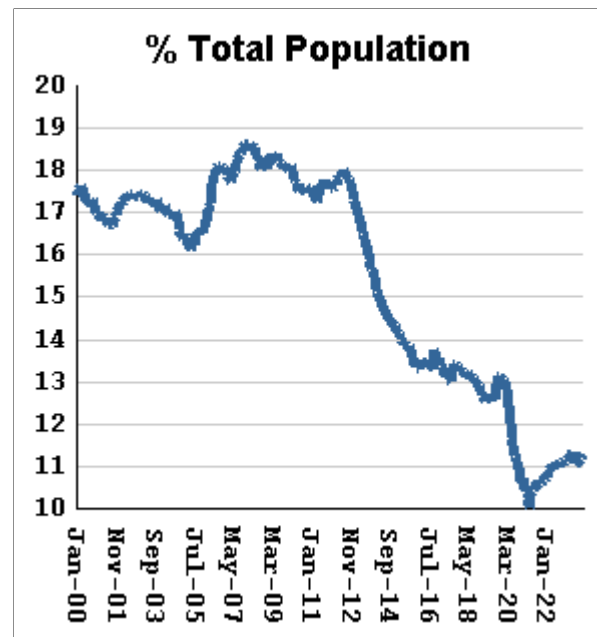
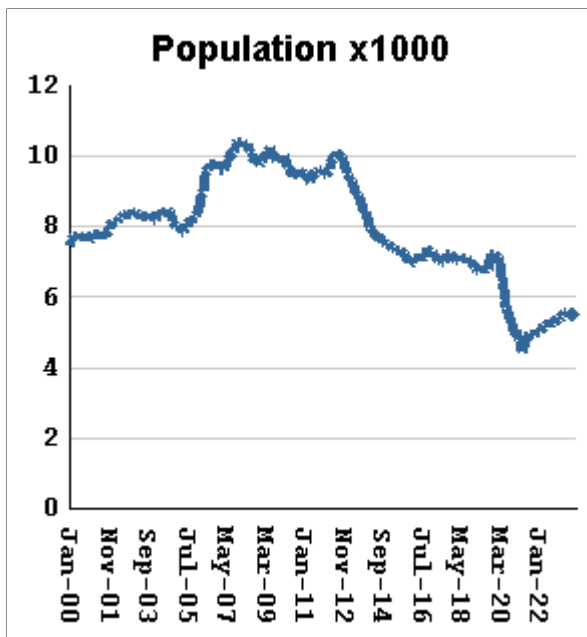
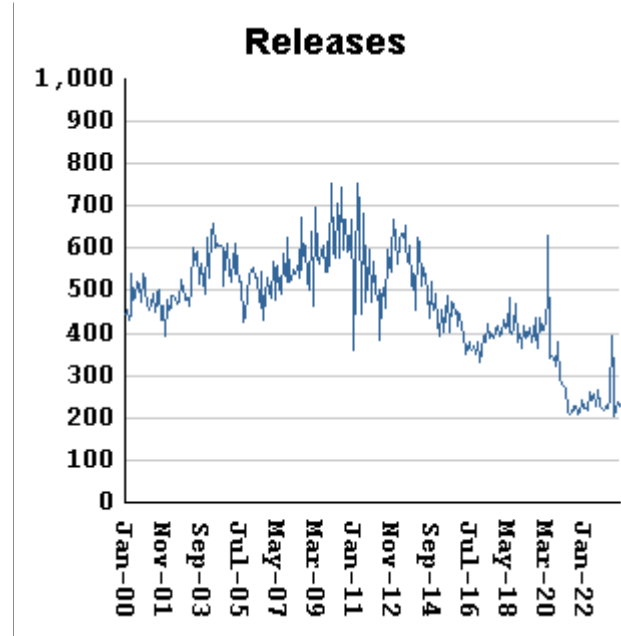
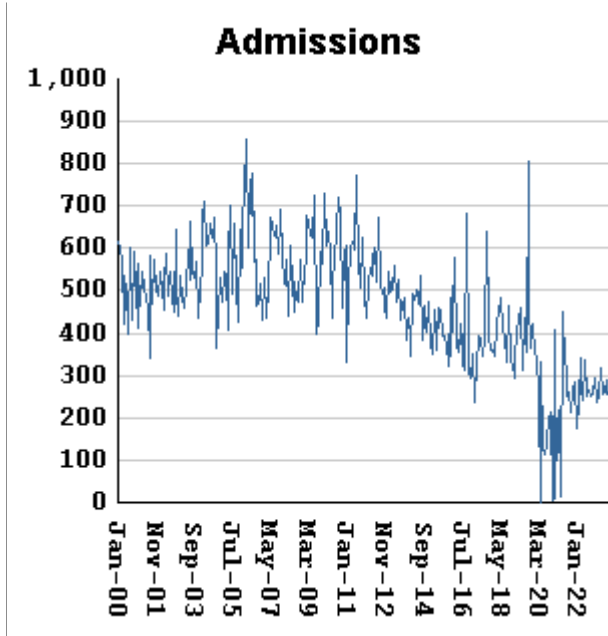
RISES BY 34 from 2077 to 2111

Percent meth inmates who are non-white

RISES BY .12 % from 28.27% to 28.39%

## Non-violent first-incarcerants, by month, Jan-2000 to Oct-2023

Historically, about one in six Georgia prison inmates has been a first-time incarcerant with a non-violent crime. In 2012 Georgia passed HB1176, which aimed to curb the growth of prison population by steering the least dangerous, least hardened offenders away from prison through pre-trial intervention, diversion, drug courts and treatment programs, and raising the dollar thresholds that define property felonies. The expectation is that over time, these measures will reduce the percentage of first-time non-violent incarcerants in prison.



Non-viol/1st-Incar admissions

RISE BY 47 from 274 to 321

Non-viol/1st-Incar releases

fall by 11 from 238 to 227

Non-viol/1st-Incar population

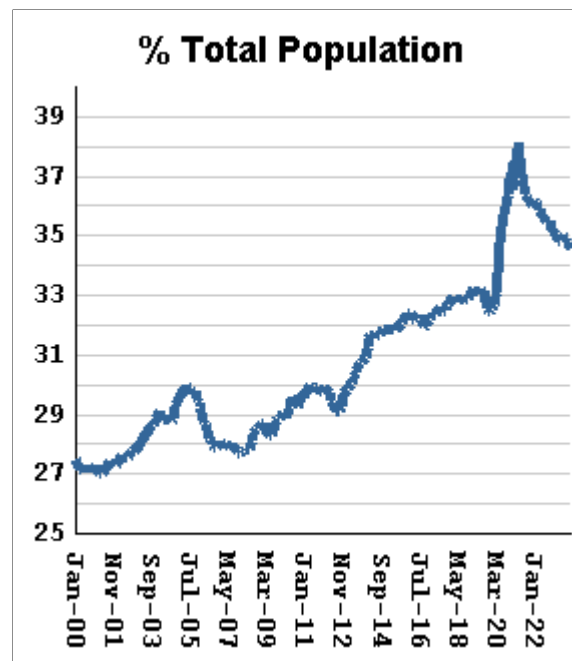
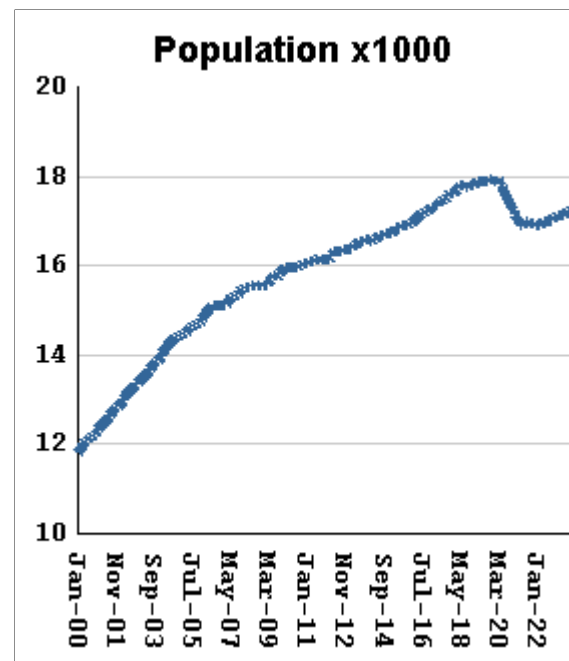
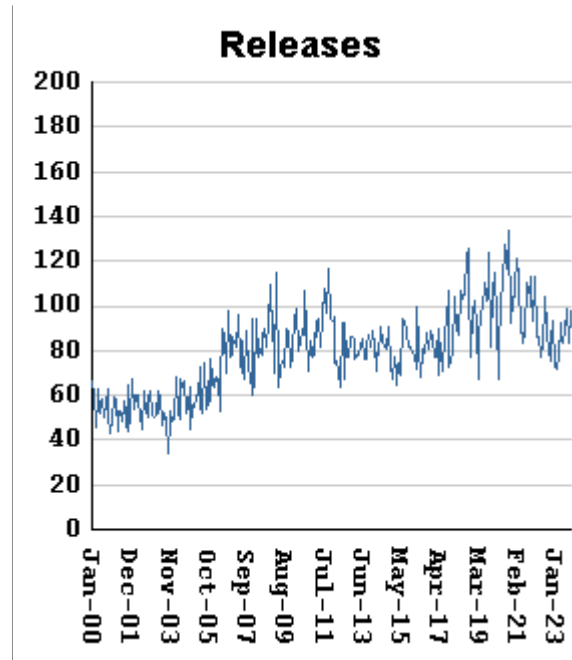
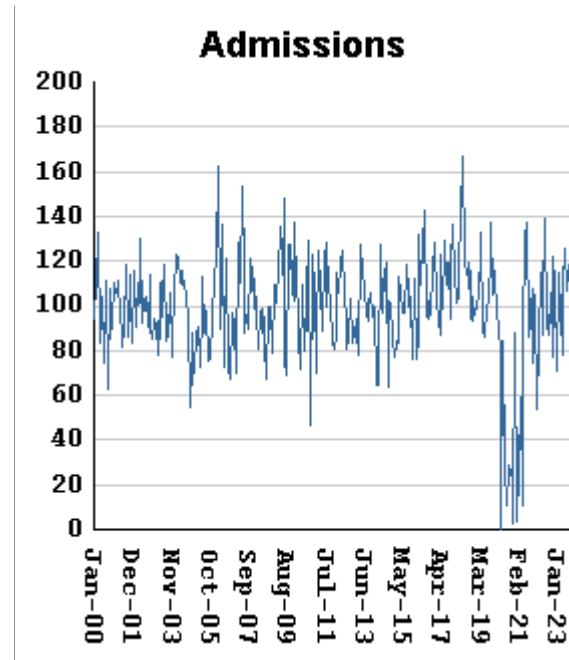
RISES BY 94 from 5551 to 5645

Non-viol/1st-Incar % of total population

RISES BY .12 % from 11.18% to 11.3%

## "Seven Deadly Sins" by month, Jan-2000 to Oct-2023

Tough legislation in 1995 imposed mandatory ten-year minimum terms for kidnapping, armed robbery, rape, aggravated sodomy, aggravated sexual battery, and aggravated child molestation, and a minimum of 25 years for murder. A second conviction resulted in life without parole. As predicted, longer prison terms caused population to climb steeply for about a decade. It then began to level off, as releases started catching up with admissions. The 2008 dip in percentage of total population (bottom right) was caused by the surge of methamphetamine convictions (Page MO-03). Note: these graphs include inmates convicted before 1995.



"Seven Deadly Sin" admissions	RISE BY	5	from	102	to	107
"Seven Deadly Sin" releases	RISE BY	15	from	83	to	98
"Seven Deadly Sin" population	RISES BY	9	from	17235	to	17244
"Seven Deadly Sin" % of total population	falls by	.21 %	from	34.73%	to	34.52%

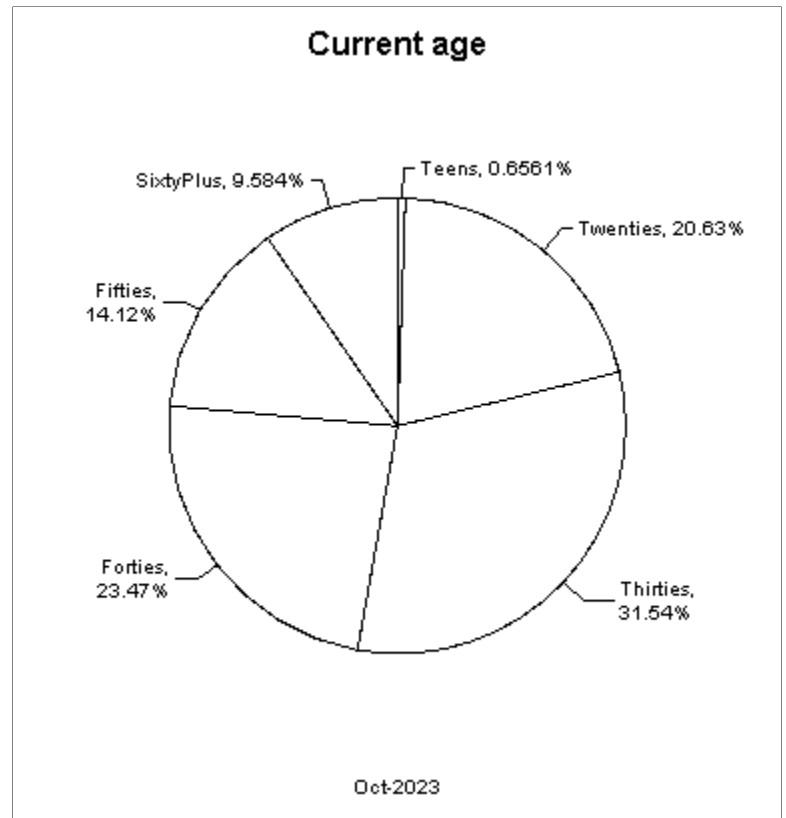
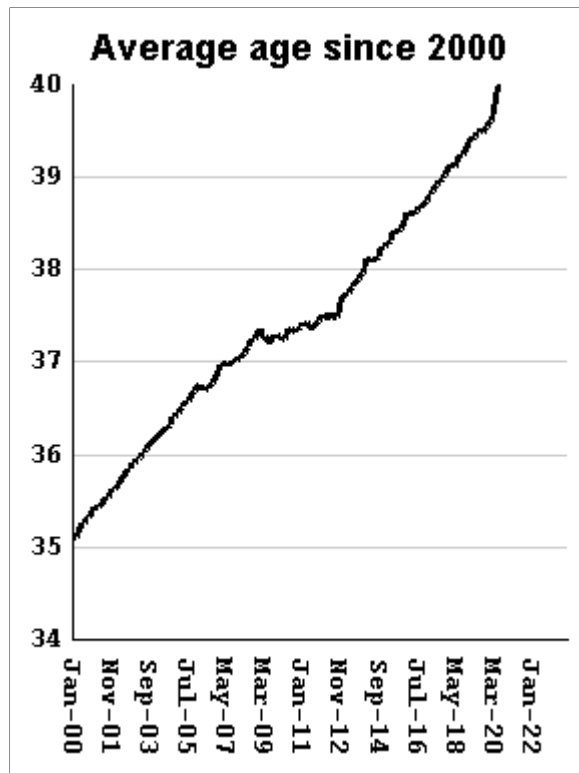
## Inmate subpopulation counts and percentages, for the past 48 months

Month	Methamphetamine						1st Incar Non-Violent		Seven Deadly Sins	
	Total Number	Total Percent	White Number	White Percent	Non White Number	Non White Percent	Number	Percent	Number	Percent
Nov-19	7838	14.21%	6012	76.70%	1834	23.40%	7235	13.11%	17926	32.49%
Dec-19	7835	14.20%	5995	76.52%	1847	23.57%	7222	13.09%	17934	32.50%
Jan-20	7766	14.12%	5945	76.55%	1827	23.53%	7166	13.03%	17913	32.56%
Feb-20	7740	14.11%	5894	76.15%	1852	23.93%	7102	12.95%	17912	32.65%
Mar-20	7591	13.99%	5778	76.12%	1818	23.95%	6933	12.78%	17921	33.04%
Apr-20	7175	13.67%	5437	75.78%	1743	24.29%	6447	12.28%	17842	33.99%
May-20	7008	13.54%	5308	75.74%	1705	24.33%	6148	11.88%	17823	34.43%
Jun-20	6848	13.47%	5245	76.59%	1686	24.62%	5927	11.66%	17741	34.90%
Jul-20	6662	13.38%	5027	75.46%	1640	24.62%	5696	11.44%	17625	35.41%
Aug-20	6512	13.30%	4903	75.29%	1613	24.77%	5494	11.22%	17537	35.81%
Sep-20	6435	13.31%	4914	76.36%	1594	24.77%	5373	11.11%	17428	36.05%
Oct-20	6341	13.29%	4780	75.38%	1565	24.68%	5207	10.92%	17358	36.39%
Nov-20	6055	13.02%	4542	75.01%	1516	25.04%	4924	10.59%	17251	37.10%
Dec-20	6306	13.35%	4720	74.85%	1589	25.20%	5048	10.69%	17241	36.51%
Jan-21	6004	13.07%	4493	74.83%	1514	25.22%	4779	10.40%	17136	37.30%
Feb-21	5977	13.15%	4489	75.10%	1540	25.77%	4696	10.33%	17041	37.49%
Mar-21	6036	13.30%	4477	74.17%	1562	25.88%	4644	10.23%	16988	37.42%
Apr-21	5779	13.03%	4279	74.04%	1503	26.01%	4441	10.01%	16911	38.13%
May-21	6114	13.54%	4576	74.84%	1603	26.22%	4683	10.37%	16904	37.43%
Jun-21	6376	13.89%	4721	74.04%	1690	26.51%	4799	10.45%	16953	36.92%
Jul-21	6594	14.18%	4861	73.72%	1736	26.33%	4886	10.51%	17001	36.56%
Aug-21	6668	14.29%	4916	73.73%	1764	26.45%	4921	10.55%	16977	36.39%
Sep-21	6734	14.40%	4957	73.61%	1780	26.43%	4957	10.60%	16974	36.29%
Oct-21	6756	14.43%	4974	73.62%	1785	26.42%	4958	10.59%	16935	36.18%
Nov-21	6818	14.53%	5028	73.75%	1802	26.43%	5013	10.68%	16938	36.10%
Dec-21	6832	14.52%	5035	73.70%	1800	26.35%	5055	10.74%	16948	36.02%
Jan-22	6757	14.47%	4988	73.82%	1800	26.64%	5005	10.72%	16889	36.17%
Feb-22	6782	14.51%	5013	73.92%	1822	26.87%	5027	10.76%	16887	36.13%
Mar-22	6904	14.65%	5049	73.13%	1858	26.91%	5139	10.90%	16916	35.90%
Apr-22	6925	14.67%	5061	73.08%	1867	26.96%	5183	10.98%	16926	35.86%
May-22	6967	14.74%	5087	73.02%	1900	27.27%	5168	10.94%	16946	35.86%
Jun-22	7085	14.86%	5159	72.82%	1931	27.25%	5261	11.03%	17004	35.65%
Jul-22	7111	14.87%	5167	72.66%	1947	27.38%	5256	10.99%	16991	35.53%
Aug-22	7162	14.97%	5219	72.87%	1967	27.46%	5294	11.07%	16988	35.51%
Sep-22	7179	14.98%	5194	72.35%	1987	27.68%	5278	11.01%	17016	35.51%
Oct-22	7186	14.99%	5216	72.59%	1996	27.78%	5304	11.07%	17004	35.48%
Nov-22	7222	14.98%	5264	72.89%	1997	27.65%	5337	11.07%	17051	35.36%
Dec-22	7259	14.96%	5262	72.49%	1999	27.54%	5408	11.14%	17067	35.17%
Jan-23	7311	15.03%	5295	72.43%	2032	27.79%	5430	11.16%	17065	35.08%
Feb-23	7366	15.08%	5327	72.32%	2055	27.90%	5461	11.18%	17108	35.02%
Mar-23	7433	15.12%	5374	72.30%	2061	27.73%	5554	11.30%	17125	34.83%
Apr-23	7427	15.10%	5378	72.41%	2051	27.62%	5567	11.32%	17111	34.80%
May-23	7293	14.89%	5283	72.44%	2036	27.92%	5437	11.10%	17137	34.99%
Jun-23	7286	14.80%	5251	72.07%	2037	27.96%	5430	11.03%	17180	34.90%
Jul-23	7346	14.88%	5312	72.31%	2072	28.21%	5484	11.11%	17197	34.82%
Aug-23	7356	14.87%	5276	71.72%	2081	28.29%	5515	11.15%	17216	34.81%
Sep-23	7346	14.80%	5269	71.73%	2077	28.27%	5551	11.18%	17235	34.73%
Oct-23	7437	14.89%	5335	71.74%	2111	28.39%	5645	11.30%	17244	34.52%



## Overview of inmate age statistics, Jan-2000 to Oct-2023

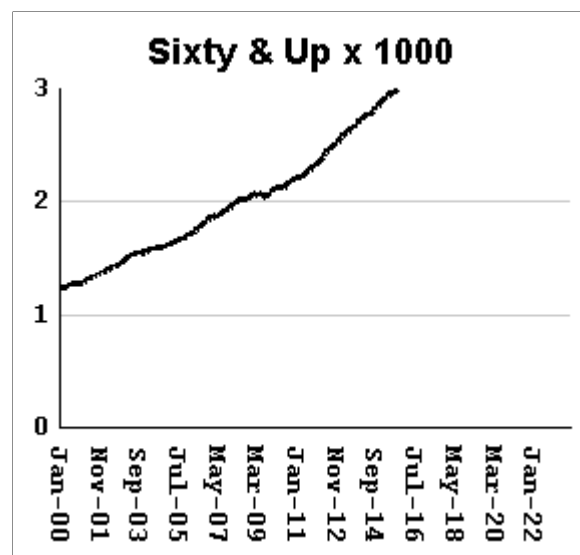
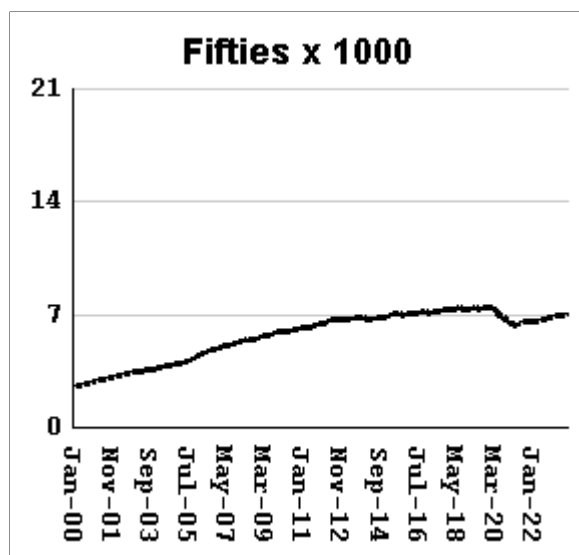
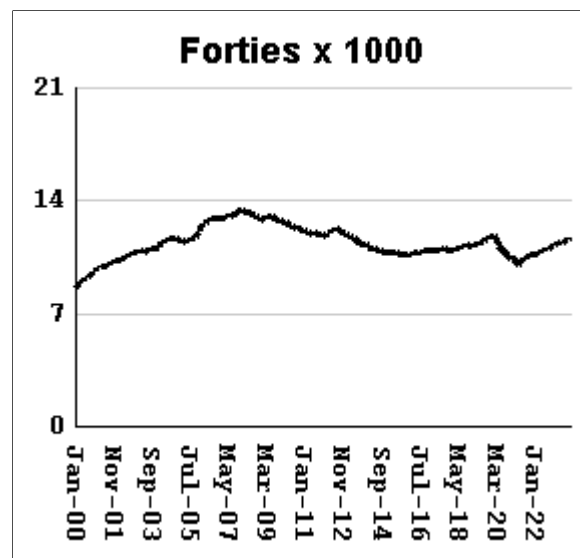
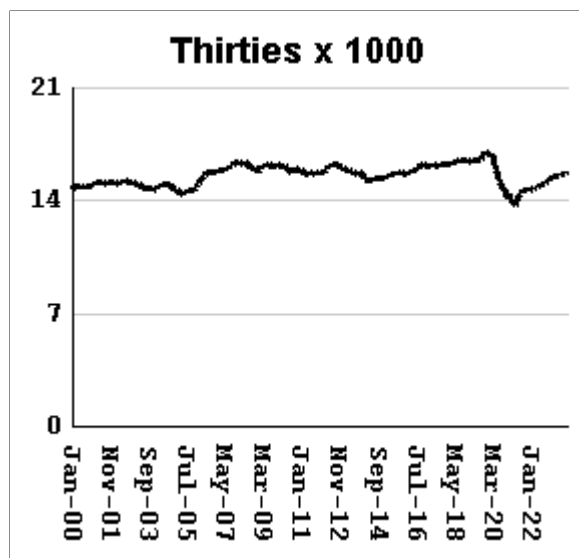
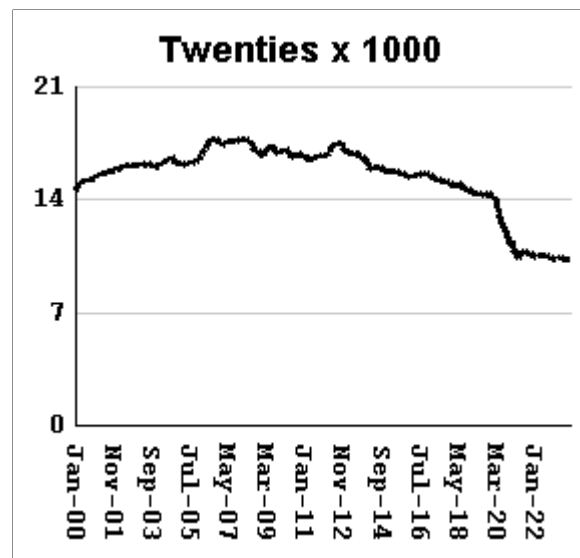
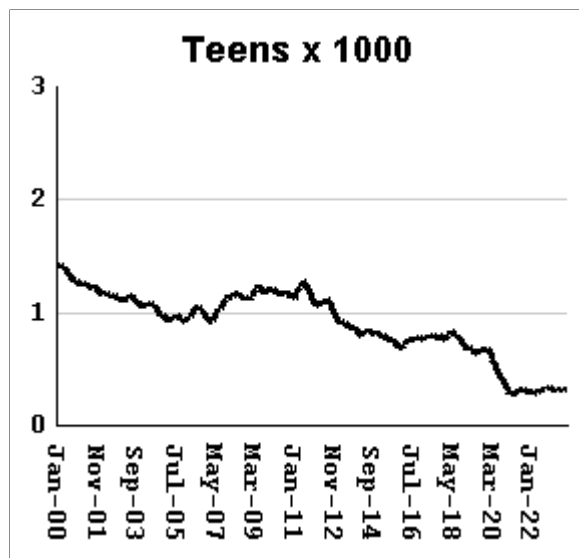
The "aging inmate population" is a concern in correctional systems throughout America, including Georgia. Here, the increase in inmate age is the result of several factors. Teenagers have been steered away from prison by increased usage of probation and other alternatives, at least for their first convictions. And there has been a surge of middle-aged male sex offenders due to the expanding "It's OK to tell" ethos. But most importantly, more severe sentence lengths and release policies have greatly increased the length of time that most offenders -- especially violent ones -- spend in prison, thereby increasing their average age.



Average age of active inmates	RISES BY	.02	from	41.28	to	41.3
Number in their teens	RISES BY	16	from	312	to	328
Percentage in their teens	RISES BY	.03%	from	.63%	to	0.66%
Number in their twenties	RISES BY	14	from	10,300	to	10,314
Percentage in their twenties	falls by	0.10%	from	20.75%	to	20.65%
Number in their thirties	RISES BY	110	from	15,656	to	15,766
Percentage in their thirties	RISES BY	0.01%	from	31.55%	to	31.56%
Number in their forties	RISES BY	127	from	11,607	to	11,734
Percentage in their forties	RISES BY	0.10%	from	23.39%	to	23.49%
Number in their fifties	RISES BY	48	from	7009	to	7,057
Percentage in their fifties	RISES BY	0.01%	from	14.12%	to	14.13%
Number age sixty and up	RISES BY	48	from	4743	to	4,791
Percentage age sixty and up	RISES BY	.03%	from	9.56%	to	9.59%

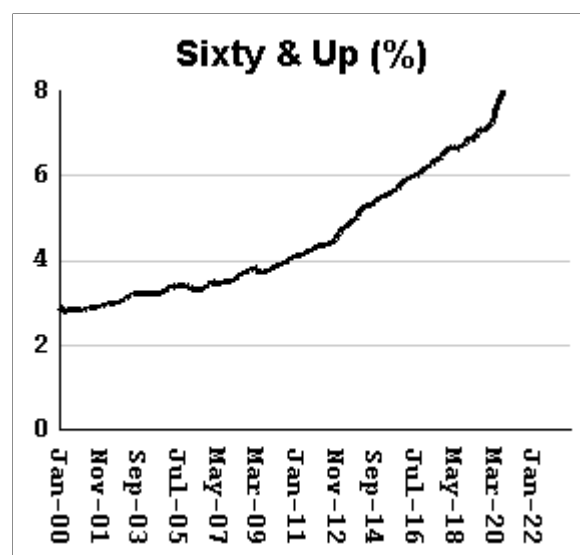
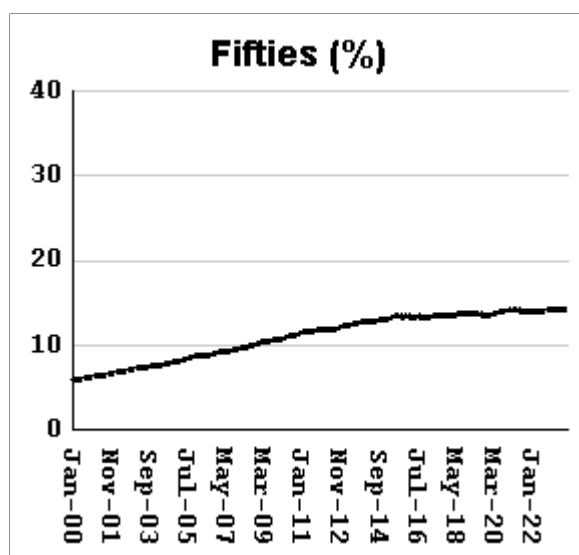
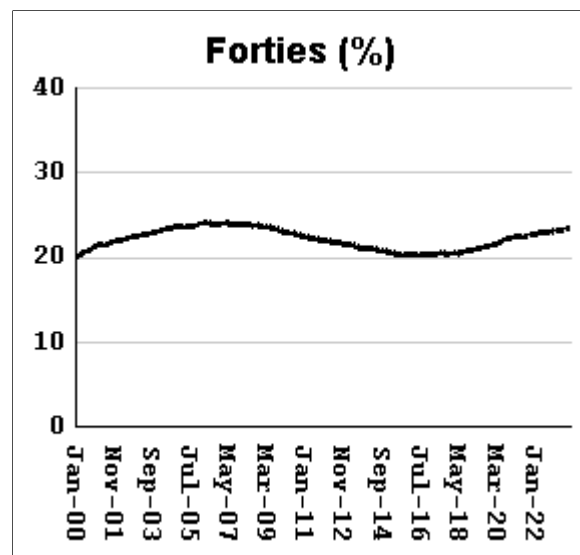
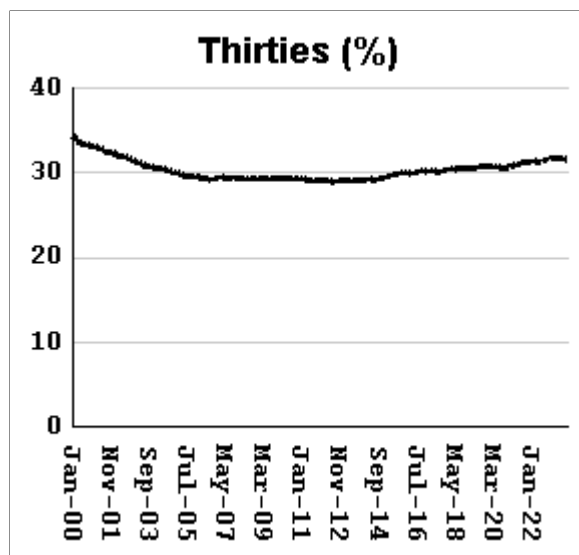
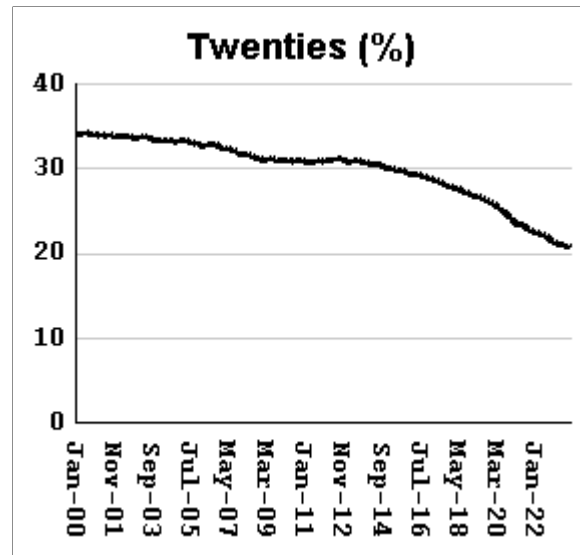
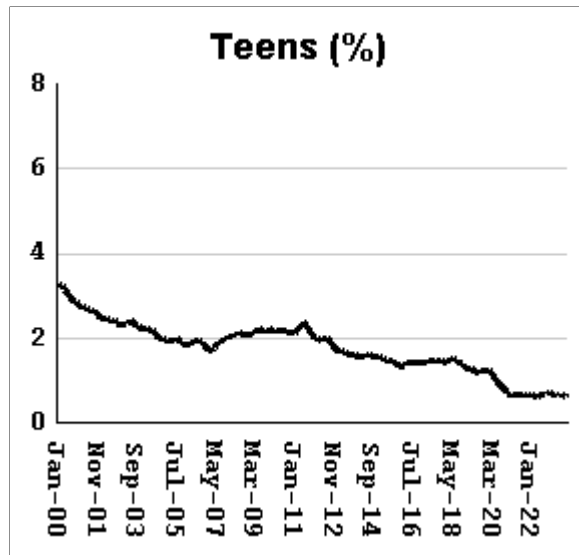
# Monthly counts of inmates by age group, Jan-2000 to Oct-2023

Y-axis of Twenties/Thirties/Forties/Fifties runs from 0 to 21,000. Y-axis of Teens/Sixty+ runs from 0 to 3,000.



# Monthly percentages of inmates by age group, Jan-2000 to Oct-2023

Y-axis of Twenties/Thirties/Forties/Fifties runs from 0% to 40%. Y-axis of Teens/Sixty+ runs from 0% to 8%

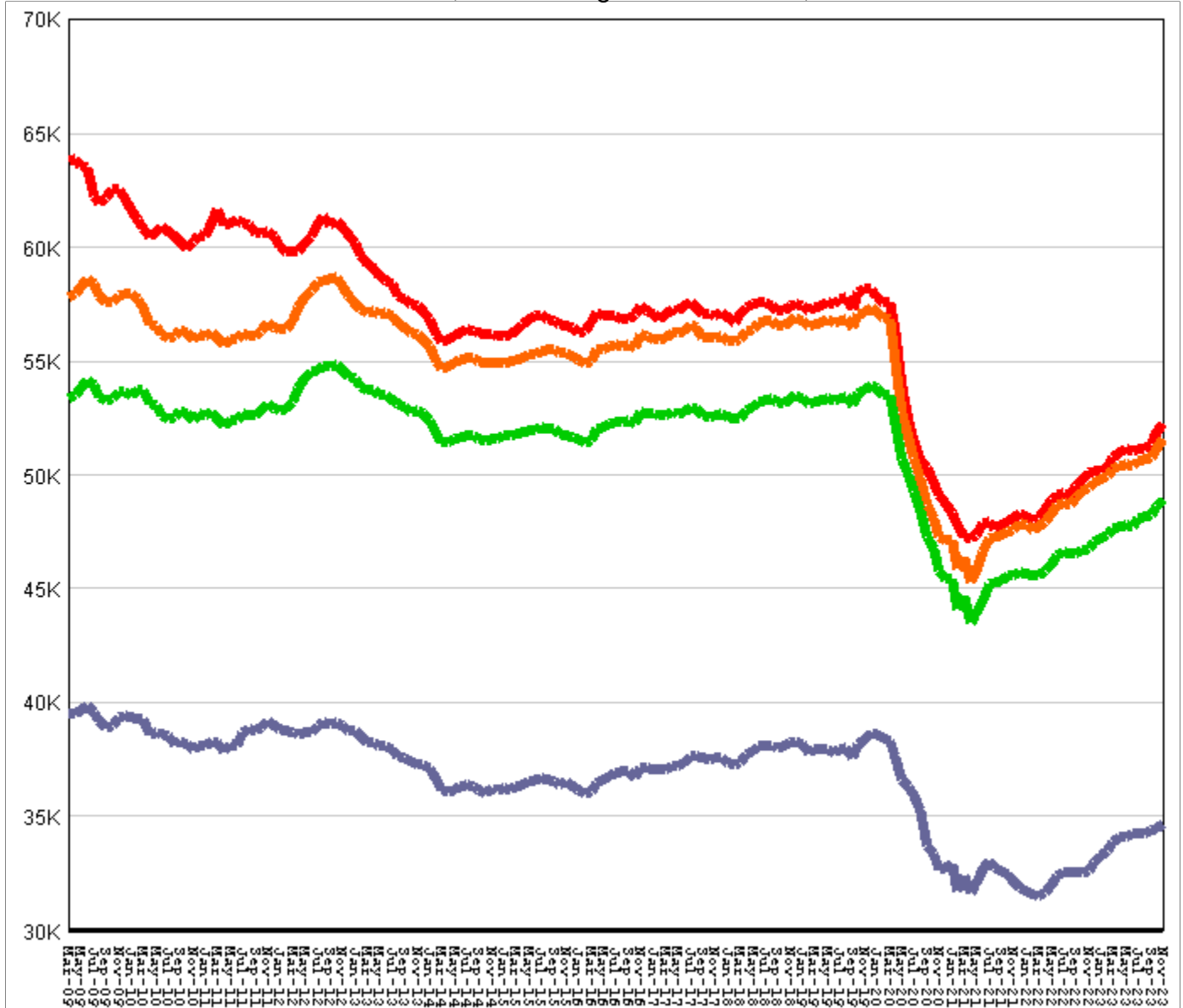


## Inmate counts & percentages by age, for past 48 months

Month	Avg Age	Teens		Twenties		Thirties		Forties		Fifties		Sixty & Up	
		Num-ber	Per-cent	Num-ber	Per-cent	Num-ber	Per-cent	Num-ber	Per-cent	Num-ber	Per-cent	Num-ber	Per-cent
Nov-19	39.52	667	1.21%	14405	26.11%	16984	30.78%	11738	21.27%	7470	13.54%	3927	7.12%
Dec-19	39.55	683	1.24%	14330	25.97%	16954	30.72%	11805	21.39%	7483	13.56%	3949	7.16%
Jan-20	39.58	679	1.23%	14217	25.84%	16914	30.74%	11828	21.50%	7434	13.51%	3959	7.20%
Feb-20	39.61	665	1.21%	14160	25.81%	16883	30.78%	11750	21.42%	7446	13.57%	3964	7.23%
Mar-20	39.68	641	1.18%	13928	25.68%	16674	30.74%	11631	21.44%	7402	13.65%	3983	7.34%
Apr-20	39.83	577	1.10%	13349	25.43%	16084	30.64%	11313	21.55%	7219	13.75%	3966	7.56%
May-20	39.87	562	1.09%	13116	25.34%	15846	30.61%	11204	21.64%	7121	13.76%	3931	7.59%
Jun-20	39.94	534	1.05%	12839	25.25%	15643	30.77%	11101	21.84%	7029	13.83%	3916	7.70%
Jul-20	40.07	480	0.96%	12403	24.92%	15199	30.54%	10899	21.90%	6921	13.90%	3884	7.80%
Aug-20	40.14	440	0.90%	12141	24.79%	14920	30.47%	10783	22.02%	6831	13.95%	3867	7.90%
Sep-20	40.2	418	0.86%	11931	24.68%	14818	30.65%	10720	22.17%	6789	14.04%	3876	8.02%
Oct-20	40.28	390	0.82%	11617	24.35%	14559	30.52%	10581	22.18%	6702	14.05%	3862	8.10%
Nov-20	40.41	352	0.76%	11181	24.05%	14198	30.53%	10355	22.27%	6572	14.13%	3852	8.28%
Dec-20	40.37	340	0.72%	11379	24.10%	14456	30.61%	10513	22.26%	6632	14.04%	3908	8.28%
Jan-21	40.49	304	0.66%	10955	23.85%	14067	30.62%	10266	22.35%	6469	14.08%	3887	8.46%
Feb-21	40.53	291	0.64%	10800	23.76%	14079	30.98%	10264	22.58%	6424	14.13%	3872	8.52%
Mar-21	40.56	296	0.65%	10673	23.51%	14007	30.85%	10174	22.41%	6372	14.04%	3886	8.56%
Apr-21	40.69	272	0.61%	10322	23.28%	13648	30.78%	9963	22.47%	6280	14.16%	3869	8.72%
May-21	40.62	290	0.64%	10589	23.45%	14026	31.06%	10175	22.53%	6372	14.11%	3922	8.68%
Jun-21	40.59	306	0.67%	10783	23.49%	14251	31.04%	10281	22.39%	6450	14.05%	3978	8.66%
Jul-21	40.58	315	0.68%	10859	23.35%	14435	31.04%	10385	22.33%	6495	13.97%	4021	8.65%
Aug-21	40.61	316	0.68%	10805	23.16%	14534	31.15%	10473	22.45%	6515	13.96%	4044	8.67%
Sep-21	40.64	315	0.67%	10746	22.97%	14604	31.22%	10497	22.44%	6524	13.95%	4099	8.76%
Oct-21	40.68	297	0.63%	10647	22.75%	14655	31.31%	10576	22.60%	6528	13.95%	4109	8.78%
Nov-21	40.69	298	0.64%	10633	22.66%	14712	31.35%	10654	22.71%	6535	13.93%	4126	8.79%
Dec-21	40.72	302	0.64%	10604	22.53%	14740	31.32%	10692	22.72%	6568	13.96%	4154	8.83%
Jan-22	40.78	293	0.63%	10483	22.45%	14646	31.36%	10645	22.80%	6573	14.08%	4161	8.91%
Feb-22	40.79	298	0.64%	10484	22.43%	14684	31.42%	10672	22.83%	6572	14.06%	4181	8.95%
Mar-22	40.79	295	0.63%	10533	22.35%	14776	31.35%	10735	22.78%	6583	13.97%	4210	8.93%
Apr-22	40.83	285	0.60%	10526	22.30%	14769	31.29%	10791	22.86%	6605	13.99%	4226	8.95%
May-22	40.86	281	0.59%	10510	22.24%	14822	31.36%	10824	22.90%	6606	13.98%	4262	9.02%
Jun-22	40.85	306	0.64%	10596	22.22%	14937	31.32%	10934	22.93%	6637	13.92%	4289	8.99%
Jul-22	40.89	315	0.66%	10551	22.07%	14981	31.33%	10976	22.96%	6679	13.97%	4316	9.03%
Aug-22	40.92	317	0.66%	10520	21.99%	15027	31.41%	11018	23.03%	6715	14.04%	4358	9.11%
Sep-22	40.97	314	0.66%	10438	21.78%	15049	31.40%	10989	22.93%	6742	14.07%	4391	9.16%
Oct-22	40.99	321	0.67%	10379	21.65%	15135	31.58%	11043	23.04%	6757	14.10%	4408	9.20%
Nov-22	41.01	332	0.69%	10403	21.58%	15239	31.61%	11145	23.11%	6805	14.11%	4452	9.23%
Dec-22	41.04	338	0.70%	10365	21.36%	15323	31.57%	11167	23.01%	6858	14.13%	4485	9.24%
Jan-23	41.07	326	0.67%	10343	21.26%	15405	31.66%	11205	23.03%	6878	14.14%	4528	9.31%
Feb-23	41.09	315	0.64%	10347	21.18%	15471	31.67%	11296	23.12%	6882	14.09%	4579	9.37%
Mar-23	41.09	316	0.64%	10400	21.15%	15561	31.65%	11384	23.15%	6931	14.10%	4580	9.31%
Apr-23	41.12	305	0.62%	10392	21.13%	15563	31.65%	11393	23.17%	6934	14.10%	4588	9.33%
May-23	41.14	311	0.64%	10347	21.13%	15566	31.79%	11368	23.21%	6927	14.15%	4603	9.40%
Jun-23	41.17	312	0.63%	10318	20.96%	15630	31.75%	11399	23.16%	6945	14.11%	4625	9.39%
Jul-23	41.21	316	0.64%	10330	20.92%	15701	31.79%	11511	23.31%	6982	14.14%	4660	9.44%
Aug-23	41.27	302	0.61%	10284	20.79%	15639	31.62%	11545	23.34%	6983	14.12%	4706	9.51%
Sep-23	41.28	312	0.63%	10300	20.75%	15656	31.55%	11607	23.39%	7009	14.12%	4743	9.56%
Oct-23	41.3	328	0.66%	10314	20.65%	15766	31.56%	11734	23.49%	7057	14.13%	4791	9.59%

## All housed offenders under GDC jurisdiction

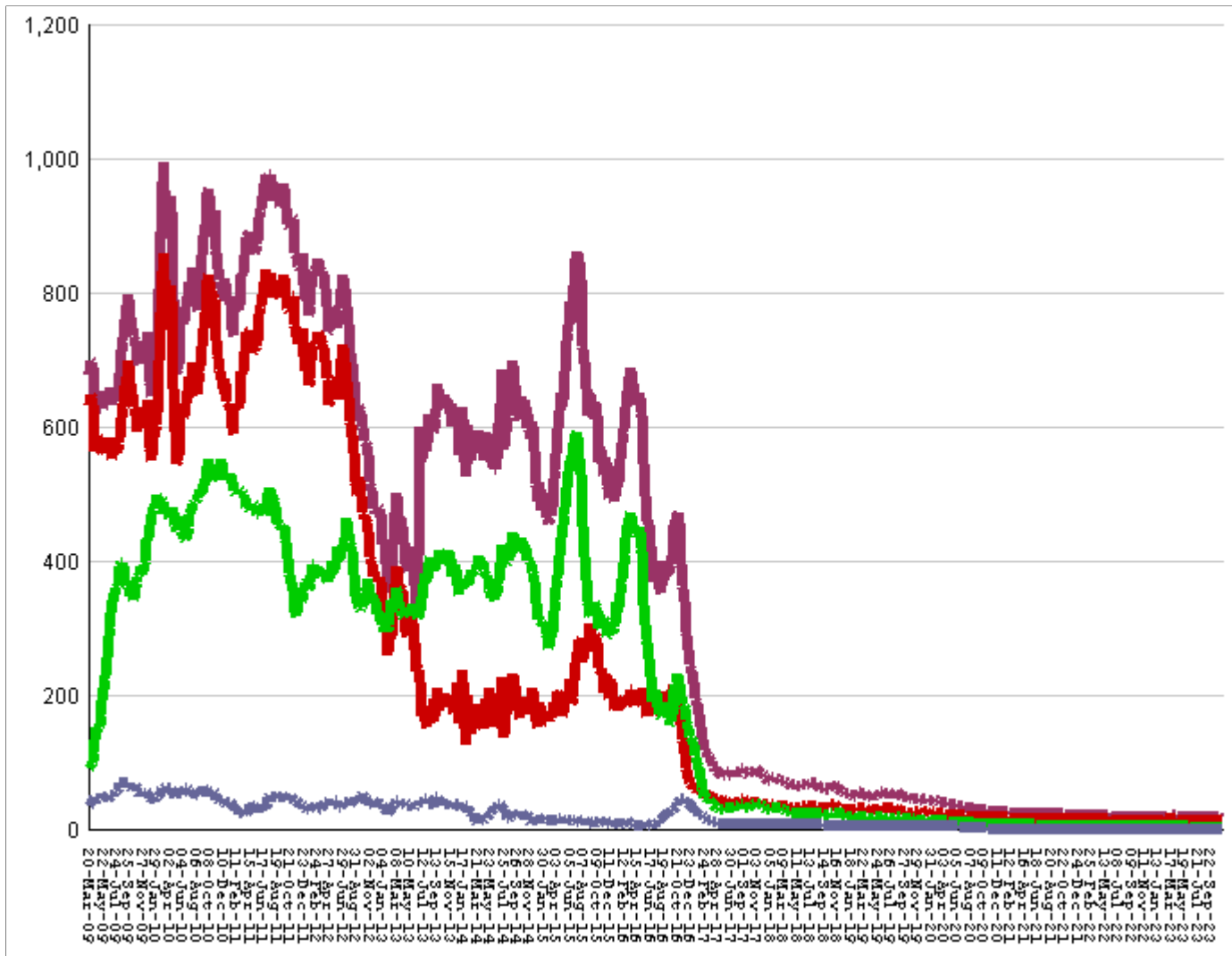
March 20, 2009 through November 17, 2023



<b>All in bed + probs in jail + backlog</b>	<b>RISE BY</b>	<b>133</b>	<b>from</b>	<b>52,221</b>	<b>to</b>	<b>52,354</b>
Probationers in jail	....	....	...	17	at	17
Inmate jail backlog	falls by	17	from	662	to	645
<b>All in beds: inmate + Prob + parole</b>	<b>RISE BY</b>	<b>150</b>	<b>from</b>	<b>51,542</b>	<b>to</b>	<b>51,692</b>
Total probationers in beds	fall by	2	from	2,633	to	2,631
Probation detention centers	RISE BY	30	from	1,244	to	1,274
Probation boot camps	fall by		from		to	
Probation RSAT	fall by	32	from	1389	to	1,357
Parole revocation centers	fall by		from		to	
<b>All in inmate beds: state + other</b>	<b>RISE BY</b>	<b>152</b>	<b>from</b>	<b>48,909</b>	<b>to</b>	<b>49,061</b>
Other inmate facilities :	RISE BY	34	from	14,209	to	14,243
Inmate boot camps	...	...	...	0	at	0
Private prisons	RISE BY	13	from	7592	to	7,605
County prisons	RISE BY	16	from	4415	to	4,431
Transitional centers	RISE BY	5	from	2202	to	2,207
<b>In state prisons only</b>	<b>RISE BY</b>	<b>118</b>	<b>from</b>	<b>34,700</b>	<b>to</b>	<b>34,818</b>

## Probationers in jail awaiting placement in facilities

March 20, 2009 through November 17, 2023



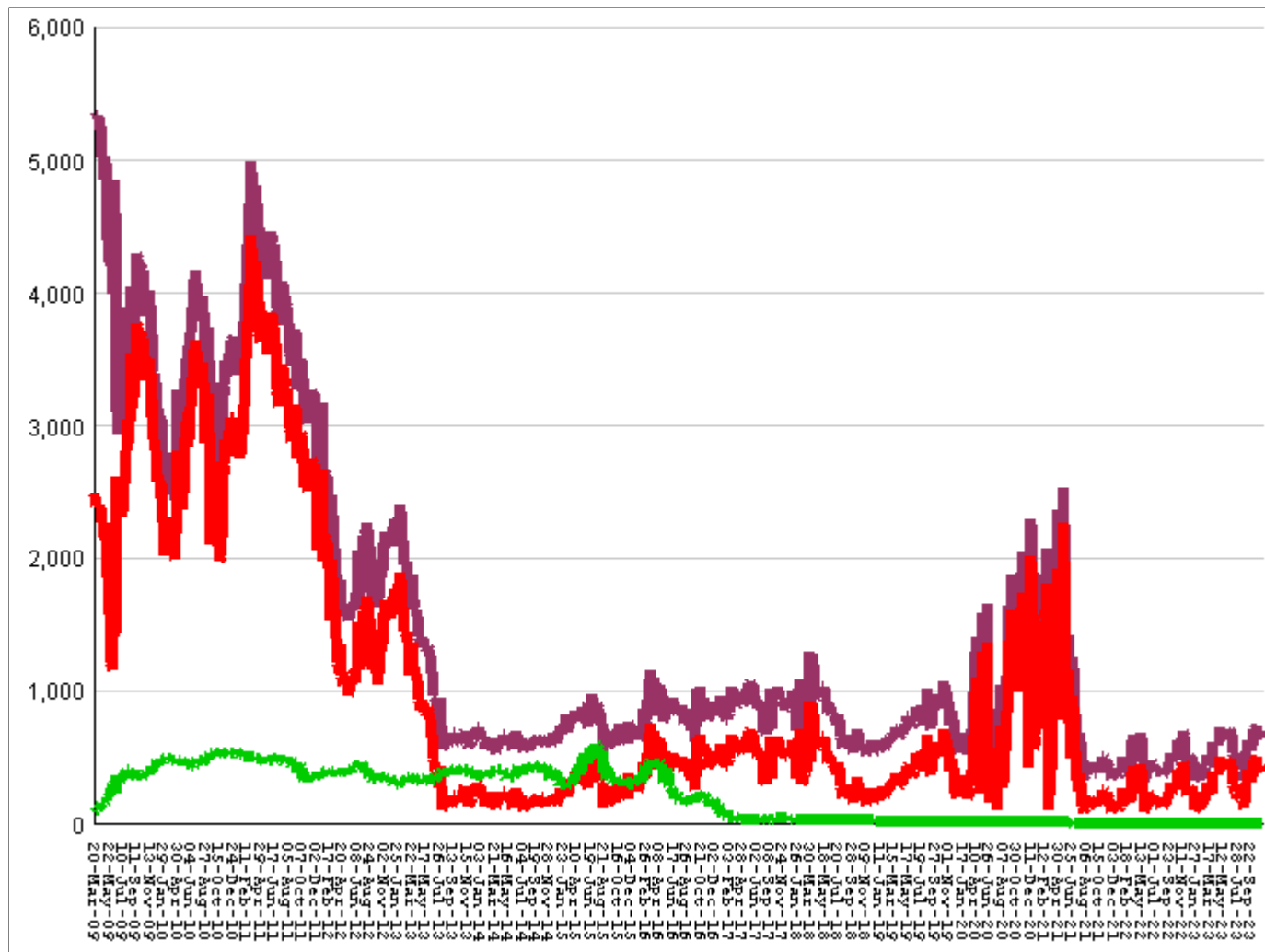
This graph shows, for each Friday since March 20 2009, the number of sentenced felony probationers who were waiting in jail for placement in facilities that GDC operates for housing probationers -- detention centers, probation residential substance abuse treatment (RSAT) centers, and probation boot camps. Counts include both those offenders sentenced directly from court, and those whose street probation was revoked.

Total probationers waiting in jail	...	...	...	level	at	17
... waiting for detention centers	...	...	...	level	at	13
... waiting for probation RSAT	...	...	...	level	at	3
... waiting for probation boot camps	...	...	...	level	at	1

The highest number of probationers waiting in jail was	994	on	05-MAR-10
... highest number waiting for detention centers was	859	on	05-MAR-10
... highest number waiting for probation RSAT was	592	on	10-JUL-15
... highest number waiting for probation boot camps was	70	on	18-SEP-09

## State inmates in jail awaiting placement in facilities

March 20, 2009 through November 17, 2023



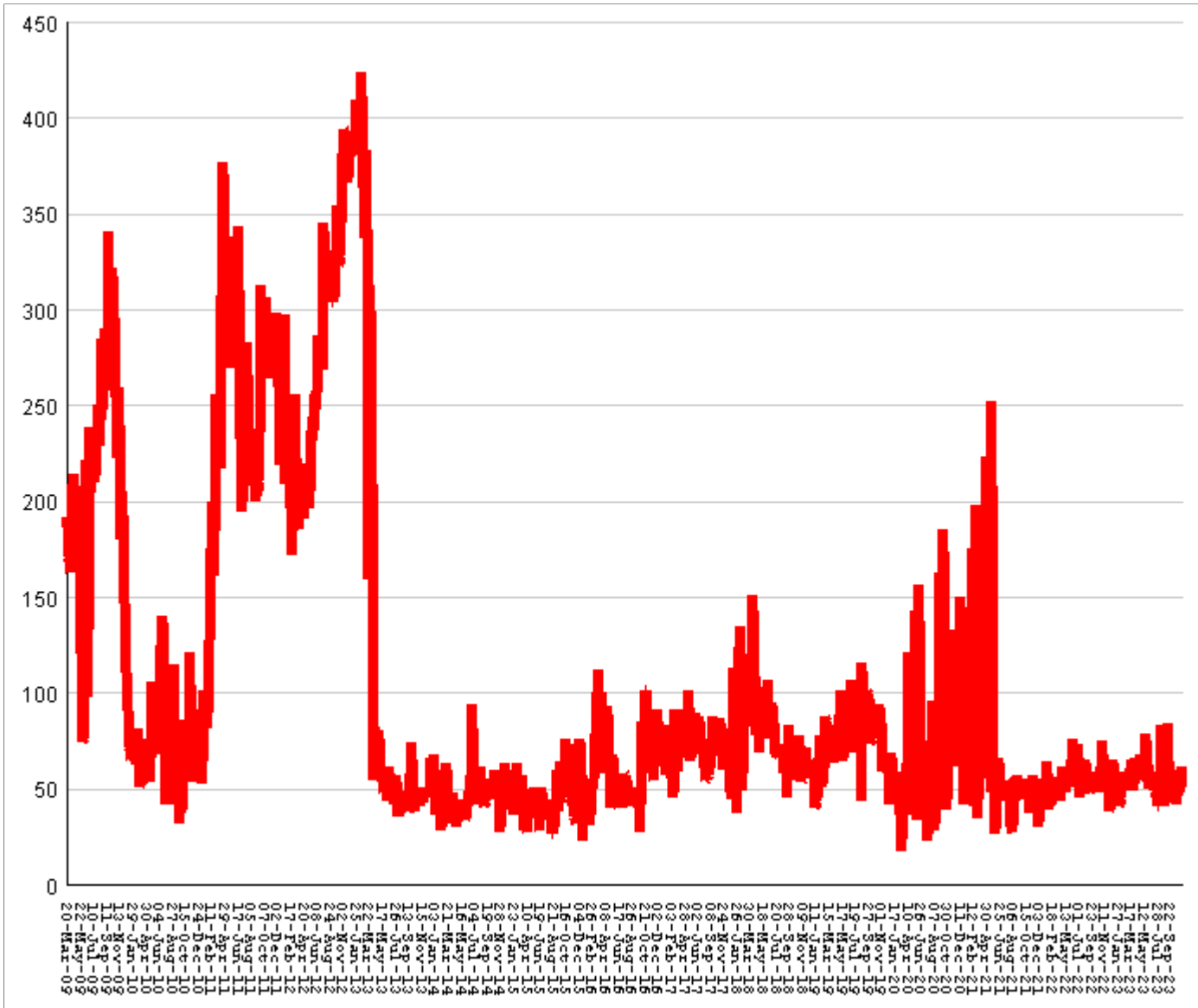
This graph shows, for each Friday since March 2009, the number of prisoners, probationers, and parolees in local jails who have been sentenced or revoked to state prison and whose documents have been received and verified by GDC. Most are almost immediately assigned to a diagnostic center, and are designated as in "admission processing". Of those a few hundred may be in the "transportation delayed" category because there is no room in the assigned diagnostic center, or because the inmate is being held for medical reasons, or for other court proceedings, or other reasons. Those remaining are "ready to be picked up".

<b>Total state inmates waiting in jail</b>	<b>fall by</b>	<b>17</b>	<b>from</b>	<b>662</b>	<b>to</b>	<b>645</b>
<b>... not yet assigned to a diagnostic center</b>	<b>RISE BY</b>	<b>2</b>	<b>from</b>	<b>32</b>	<b>to</b>	<b>34</b>
<b>... total "in admission processing"</b>	<b>fall by</b>	<b>19</b>	<b>from</b>	<b>630</b>	<b>to</b>	<b>611</b>
<b>... with "transportation delayed"</b>	<b>fall by</b>	<b>2</b>	<b>from</b>	<b>225</b>	<b>to</b>	<b>223</b>
<b>... ready to be picked up</b>	<b>fall by</b>	<b>17</b>	<b>from</b>	<b>405</b>	<b>to</b>	<b>388</b>

<b>The highest number of state inmates waiting in jail was</b>	<b>5338</b>	<b>on</b>	<b>27-MAR-09</b>
<b>... highest number not asg to a diagnostic center was</b>	<b>2881</b>	<b>on</b>	<b>12-JUN-09</b>
<b>... highest number in admission processing was</b>	<b>4916</b>	<b>on</b>	<b>25-MAR-11</b>
<b>... highest number with transportation delayed was</b>	<b>645</b>	<b>on</b>	<b>14-JAN-11</b>
<b>... highest number ready to be pickup was</b>	<b>4435</b>	<b>on</b>	<b>25-MAR-11</b>

## Female state inmates in jail awaiting pickup

March 20, 2009 through November 17, 2023



This graph shows, for each Friday since March 2009, the number of female state prisoners in local jails who were assigned to diagnostic centers but had not yet been picked up.

<b>Female state inmates in jails waiting picked up</b>	<b>RISE BY</b>	<b>1</b>	<b>from</b>	<b>60</b>	<b>to</b>	<b>61</b>
The highest number of female inmates waiting in jail was		424	on	01-FEB-13		
The lowest number of female inmates waiting in jail was		17	on	20-MAR-20		



# Summary of housed prisoners, parolees, and probationers

Week ending	Prison	Parole	Probation			Prison+parole+probation	Jail		Total
	Total inmates	Revocation centers	Prob RSAT	Boot camp	Detention		Inmate backlog	Probationers	Prison+parole+probation+jail
25-Nov-2022	46825		1605		1089	49519	688	18	50225
02-Dec-2022	46925		1604		1060	49589	537	18	50144
09-Dec-2022	46898		1530		1058	49486	507	18	50011
16-Dec-2022	46957		1582		1071	49610	506	18	50134
23-Dec-2022	47168		1557		1063	49788	481	18	50287
30-Dec-2022	47266		1547		1002	49815	447	18	50280
06-Jan-2023	47175		1538		973	49686	342	18	50046
13-Jan-2023	47229		1580		976	49785	355	18	50158
20-Jan-2023	47219		1568		1029	49816	354	18	50188
27-Jan-2023	47244		1556		981	49781	321	18	50120
03-Feb-2023	47232		1558		1022	49812	374	18	50204
10-Feb-2023	47232		1554		1022	49808	338	18	50164
17-Feb-2023	47419		1534		1048	50001	395	19	50415
24-Feb-2023	47485		1535		1086	50106	380	19	50505
03-Mar-2023	47519		1524		1114	50157	443	19	50619
10-Mar-2023	47533		1505		1081	50119	432	20	50571
17-Mar-2023	47598		1557		1101	50256	433	19	50708
24-Mar-2023	47637		1598		1048	50283	484	20	50787
31-Mar-2023	47798		1572		1091	50461	518	20	50999
07-Apr-2023	47709		1551		1111	50371	584	20	50975
14-Apr-2023	47660		1573		1093	50326	579	20	50925
21-Apr-2023	47659		1577		1079	50315	610	19	50944
28-Apr-2023	47834		1584		1086	50504	599	19	51122
05-May-2023	47780		1531		1092	50403	628	19	51050
12-May-2023	47668		1568		1114	50350	657	19	51026
19-May-2023	47804		1601		1108	50513	643	19	51175
26-May-2023	47740		1548		1102	50390	717	19	51126
02-Jun-2023	47646		1535		1118	50299	678	19	50996
09-Jun-2023	47610		1489		1130	50229	671	19	50919
16-Jun-2023	47620		1522		1150	50292	705	18	51015
23-Jun-2023	47727		1481		1152	50360	694	18	51072
30-Jun-2023	47959		1411		1183	50553	713	18	51284
07-Jul-2023	47942		1380		1181	50503	526	18	51047
14-Jul-2023	48007		1383		1163	50553	445	18	51016
21-Jul-2023	48125		1375		1184	50684	464	18	51166
28-Jul-2023	48154		1413		1202	50769	415	18	51202
04-Aug-2023	48140		1379		1206	50725	411	18	51154
11-Aug-2023	48103		1414		1187	50704	332	18	51054
18-Aug-2023	48177		1299		1198	50674	397	18	51089
25-Aug-2023	48136		1323		1202	50661	522	18	51201
01-Sep-2023	48202		1307		1215	50724	630	18	51372
08-Sep-2023	48156		1305		1205	50666	540	18	51224
15-Sep-2023	48208		1297		1224	50729	507	18	51254
22-Sep-2023	48259		1312		1203	50774	565	18	51357
29-Sep-2023	48412		1327		1161	50900	627	18	51545
06-Oct-2023	48407		1305		1203	50915	704	18	51637
13-Oct-2023	48543		1313		1221	51077	642	18	51737
20-Oct-2023	48597		1312		1232	51141	725	18	51884
27-Oct-2023	48698		1328		1235	51261	742	18	52021
03-Nov-2023	48781		1298		1265	51344	688	18	52050
10-Nov-2023	48909		1389		1244	51542	662	17	52221
17-Nov-2023	49061		1357		1274	51692	645	17	52354

# Offenders housed in facilities for state prisoners

Week ending	In state prisons	In facilities other than state prisons						Total Inmates
		Transition centers	County prisons	Pre-rel centers	Private prisons	Inmate boot camps	Total others	
25-Nov-2022	32718	2219	4614		7273	1	14107	46825
02-Dec-2022	32792	2226	4610		7296	1	14133	46925
09-Dec-2022	32828	2225	4549		7295	1	14070	46898
16-Dec-2022	32931	2232	4516		7277	1	14026	46957
23-Dec-2022	33119	2243	4532		7273	1	14049	47168
30-Dec-2022	33205	2245	4531		7284	1	14061	47266
06-Jan-2023	33185	2229	4505		7255	1	13990	47175
13-Jan-2023	33197	2212	4580		7239	1	14032	47229
20-Jan-2023	33224	2195	4585		7214	1	13995	47219
27-Jan-2023	33290	2216	4577		7160	1	13954	47244
03-Feb-2023	33321	2194	4580		7136	1	13911	47232
10-Feb-2023	33392	2178	4575		7086	1	13840	47232
17-Feb-2023	33585	2178	4577		7078	1	13834	47419
24-Feb-2023	33665	2181	4589		7049	1	13820	47485
03-Mar-2023	33701	2184	4579		7054	1	13818	47519
10-Mar-2023	33777	2183	4537		7035	1	13756	47533
17-Mar-2023	33873	2187	4511		7026	1	13725	47598
24-Mar-2023	33889	2205	4545		6997	1	13748	47637
31-Mar-2023	34007	2231	4570		6989	1	13791	47798
07-Apr-2023	33971	2214	4571		6952	1	13738	47709
14-Apr-2023	33982	2160	4575		6942	1	13678	47660
21-Apr-2023	34063	2143	4536		6916	1	13596	47659
28-Apr-2023	34156	2160	4616		6901	1	13678	47834
05-May-2023	34134	2110	4645		6890	1	13646	47780
12-May-2023	33978	2190	4615		6884	1	13690	47668
19-May-2023	34127	2233	4555		6888	1	13677	47804
26-May-2023	34113	2231	4506		6889	1	13627	47740
02-Jun-2023	34064	2218	4477		6886	1	13582	47646
09-Jun-2023	34152	2191	4393		6873	1	13458	47610
16-Jun-2023	34202	2186	4352		6879	1	13418	47620
23-Jun-2023	34273	2191	4387		6875	1	13454	47727
30-Jun-2023	34378	2216	4468		6896	1	13581	47959
07-Jul-2023	34264	2185	4514		6978	1	13678	47942
14-Jul-2023	34225	2198	4468		7115	1	13782	48007
21-Jul-2023	34267	2199	4508		7150	1	13858	48125
28-Jul-2023	34265	2195	4519		7174	1	13889	48154
04-Aug-2023	34216	2213	4551		7159	1	13924	48140
11-Aug-2023	34180	2201	4578		7143	1	13923	48103
18-Aug-2023	34269	2197	4544		7167	0	13908	48177
25-Aug-2023	34271	2189	4509		7167	0	13865	48136
01-Sep-2023	34340	2192	4515		7155	0	13862	48202
08-Sep-2023	34349	2191	4448		7168	0	13807	48156
15-Sep-2023	34290	2191	4484		7243	0	13918	48208
22-Sep-2023	34364	2207	4420		7268	0	13895	48259
29-Sep-2023	34465	2210	4360		7377	0	13947	48412
06-Oct-2023	34422	2203	4338		7444	0	13985	48407
13-Oct-2023	34465	2209	4339		7530	0	14078	48543
20-Oct-2023	34460	2198	4366		7573	0	14137	48597
27-Oct-2023	34493	2204	4406		7595	0	14205	48698
03-Nov-2023	34562	2208	4404		7607	0	14219	48781
10-Nov-2023	34700	2202	4415		7592	0	14209	48909
17-Nov-2023	34818	2207	4431		7605	0	14243	49061

# Offenders waiting in local jails for state facilities

Week ending	Probationers waiting in jail				State prisoners wating in jail					Assigned females
	.. for PDCs	.. for RSAT	.. for boot camps	Total	Total backlog	Not yet assigned	In adm process	Delayed transport	Ready for pickup	
25-Nov-2022	14	4	0	18	688	36	652	193	459	56
02-Dec-2022	14	4	0	18	537	36	501	194	307	38
09-Dec-2022	14	4	0	18	507	37	470	191	279	41
16-Dec-2022	14	4	0	18	506	39	467	192	275	58
23-Dec-2022	14	4	0	18	481	40	441	196	245	65
30-Dec-2022	14	4	0	18	447	39	408	197	211	44
06-Jan-2023	14	4	0	18	342	38	304	194	110	41
13-Jan-2023	14	4	0	18	355	37	318	195	123	45
20-Jan-2023	14	4	0	18	354	35	319	192	127	42
27-Jan-2023	14	4	0	18	321	34	287	194	93	53
03-Feb-2023	14	4	0	18	374	33	341	191	150	58
10-Feb-2023	14	4	0	18	338	32	306	189	117	47
17-Feb-2023	15	4	0	19	395	32	363	191	172	59
24-Feb-2023	15	4	0	19	380	31	349	191	158	51
03-Mar-2023	15	4	0	19	443	30	413	189	224	49
10-Mar-2023	16	4	0	20	432	29	403	178	225	50
17-Mar-2023	15	4	0	19	433	30	403	181	222	59
24-Mar-2023	15	4	1	20	484	29	455	181	274	65
31-Mar-2023	15	4	1	20	518	31	487	184	303	56
07-Apr-2023	15	4	1	20	584	30	554	188	366	56
14-Apr-2023	15	4	1	20	579	29	550	191	359	55
21-Apr-2023	14	4	1	19	610	27	583	188	395	66
28-Apr-2023	14	4	1	19	599	28	571	192	379	61
05-May-2023	14	4	1	19	628	27	601	191	410	79
12-May-2023	14	4	1	19	657	29	628	189	439	62
19-May-2023	14	4	1	19	643	27	616	190	426	56
26-May-2023	14	4	1	19	717	28	689	193	496	68
02-Jun-2023	14	4	1	19	678	26	652	197	455	54
09-Jun-2023	14	4	1	19	671	27	644	194	450	52
16-Jun-2023	14	3	1	18	705	26	679	199	480	59
23-Jun-2023	14	3	1	18	694	27	667	208	459	50
30-Jun-2023	14	3	1	18	713	27	686	203	483	66
07-Jul-2023	14	3	1	18	526	27	499	203	296	49
14-Jul-2023	14	3	1	18	445	26	419	204	215	41
21-Jul-2023	14	3	1	18	464	26	438	200	238	46
28-Jul-2023	14	3	1	18	415	26	389	192	197	54
04-Aug-2023	14	3	1	18	411	26	385	196	189	41
11-Aug-2023	14	3	1	18	332	26	306	192	114	41
18-Aug-2023	14	3	1	18	397	26	371	194	177	58
25-Aug-2023	14	3	1	18	522	27	495	197	298	83
01-Sep-2023	14	3	1	18	630	27	603	199	404	62
08-Sep-2023	14	3	1	18	540	27	513	203	310	43
15-Sep-2023	14	3	1	18	507	27	480	206	274	51
22-Sep-2023	14	3	1	18	565	26	539	205	334	64
29-Sep-2023	14	3	1	18	627	26	601	203	398	84
06-Oct-2023	14	3	1	18	704	26	678	211	467	55
13-Oct-2023	14	3	1	18	642	28	614	213	401	42
20-Oct-2023	14	3	1	18	725	31	694	214	480	58
27-Oct-2023	14	3	1	18	742	31	711	214	497	51
03-Nov-2023	14	3	1	18	688	33	655	221	434	48
10-Nov-2023	13	3	1	17	662	32	630	225	405	60
17-Nov-2023	13	3	1	17	645	34	611	223	388	61