

Friday Report – overview and contents

The pages in The Friday Report are about adult offenders in Georgia's prisons and jails. They contain statistical snapshots and trends in the populations and movements of offenders in the state prison system, on probation, on parole, and in local jails. Information comes from databases of the Georgia Department of Corrections (GDC) and the Board of Pardons and Paroles, and from data provided by local jailers. Information is summarized into tables in the GDC/Parole Data Warehouse, and is extracted into these pages each Friday. Pages are organized according to the table that supplied the data.

The Monthly Research Table, named "MO_RESRCH" or simply "MO", contains data about state prisoners, grouped into statistically interesting categories. The table contains one record per month, from January 2000 to the present. Despite its being "monthly", it is updated weekly, because some data trickles in for several weeks before it becomes stable history.	
Page	Contents
MO-01	Clemencies and maxouts. Monthly graph from 2000 to present shows the monthly departures from prison via actions by the Georgia Parole Board (clemencies), and via service of 100% of the court ordered sentence (maxouts)
MO-02	48 months of releases. Table shows counts and percentages of releases via clemencies and maxouts, with and without probation to follow, for each of the past 48 months.
MO-03	Methamphetamine. Monthly graph from 2000 to present shows admissions, departures, population, and percent of population of inmates with a current offense of methamphetamine possession, sale, manufacturing, or trafficking, and the changing racial composition of the methamphetamine population.
MO-04	Non-violent first incarcerants. Monthly graph from 2000 to present shows admissions, departures, population, and percent of population of inmates without violent or sex crimes, who are serving their first Georgia felony incarceration.
MO-05	Seven Deadly Sins. Monthly graph from 2000 to present shows admissions, departures, population, and percent of population of inmates convicted of kidnapping, armed robbery, rape, aggravated sodomy, aggravated sexual battery, and aggravated child molestation, for whom especially severe penalties are prescribed.
MO-06	48 months of inmate subpopulations. Table shows number and percentage of white and non-white inmates with methamphetamine offenses, and non-violent first incarcerants, and inmates convicted of the Seven Deadly Sins.
MO-07	Inmate age overview. Line graph shows the average age of the inmate population, by month from 2000 to the present. Pie chart shows the number of currently active inmates in their teens, twenties, thirties, forties, fifties, and age sixty+.
MO-08	Counts by age group. Graphs show the count, by month from 2000 to the present, of inmates in their teens, twenties, thirties, forties, fifties, and age sixty+.
MO-09	Percentages by age group. Graphs show the <i>percentages</i> , by month from 2000 to the present, of inmates in their teens, twenties, thirties, forties, fifties, and age sixty+.
MO-10	48 months of inmate ages. Table shows average age of the standing population, and counts and percentages of teens, twenties, thirties, forties, fifties, and sixty+, for each of the past 48 months.

Friday Report – overview and contents (*continued*)

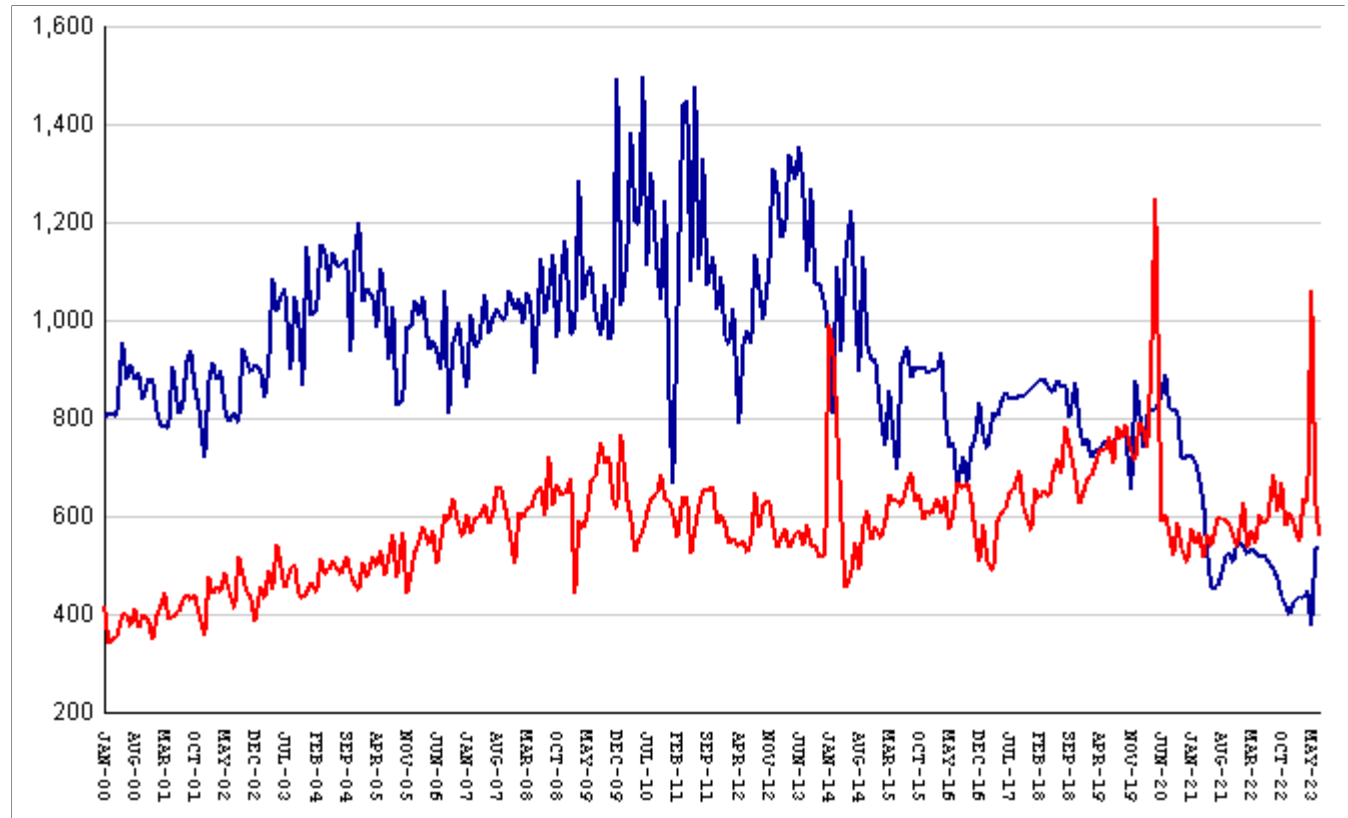
The MSR Table is based on the Management Summary Report (MSR), a snapshot report posted each week in GDC's Scribe database. MSR_RESRCH gathers that data into weekly trends, with one record for each Friday since March 20th, 2009.	
Page	Contents
MSR-01	All housed offenders. Weekly graph from March 20, 2009 to present, showing counts of inmates in state prisons, transitional centers, county prisons, private prisons, inmate boot camps, parole revocation centers, probation Residential Substance Abuse Treatment (RSAT), probation boot camps, probation detention centers, plus the inmate jail backlog and probationers in jail waiting for state facilities.
MSR-02	Probationers in jail. Weekly graph from March 20, 2009 to present, showing counts of probationers in local jails awaiting placement in probation detention centers, probation RSAT centers, and probation boot camps.
MSR-03	State inmates in jail. Weekly graph from March 20, 2009 to present, showing counts of state inmates in local jails awaiting placement in state prison facilities – including those who have not yet been assigned to a diagnostic center, those whose transportation has been delayed for some reason, and those who are ready to be picked up.
MSR-04	Female state inmates in jail. Weekly graph from March 20, 2009 to present, showing counts of female state inmates awaiting placement in a state prison for females.
MSR-05	52-week table: housed offenders. Data for each of the past 52 weeks, showing total prison inmates, parolees in revocation centers, probationers in RSAT/boot camp/detention centers, inmate jail backlog, probationers in jail waiting for facilities, with subtotals.
MSR-06	52-week table: state prisoners. Data for each of the past 52 weeks, showing inmates in state prisons, transition centers, county prisons, pre-release centers, private prisons, and inmate boot camps, with subtotals.
MSR-07	52-week table: waiting in jail. Data for each of the past 52 weeks, showing probationers waiting for detention centers, RSAT, and boot camp; and state prisoners not yet assigned to diagnostic centers, in admission process, with delayed transport, and ready for pickup, with subtotals.

The DCA table consists mainly of data submitted from each of Georgia's 140+ local jails, via the Georgia Crime Information Center (GCIC) to the Georgia Department of Community Affairs (DCA), which publishes its <u>County Jail Inmate Population Report</u> on its web site each month. GDC has collected summary statewide data from this report every month since its inception in January, 1993. The table also contains the inmate jail backlog as computed by GDC for the last Friday of each month, for comparison with the jailers' count of state inmates. Although nominally a monthly table, DCA_RESRCH is updated weekly to insure that the DCA data is correctly synchronized with the GDC jail backlog data.	
Page	Contents
DCA-01	Jail composition. Monthly graph from 1993 to the present shows trends in the numbers of unsentenced inmates, state inmates, county inmates, and other inmates.
DCA-02	Two views of jail backlog. Monthly graph from 1993 to present compares jailers' count of "state inmates" with GDC's count of the "inmate jail backlog", and explains that both are valid counts of different phenomena.
DCA-03	48-month table: local jails. Data from Georgia jailers for each of the past 48 months, showing total jail population, capacity, utilization, and number and percent of unsentenced inmates, state inmates, county inmates, and other inmates.

Releases by clemency and maxout, Jan-2000 to Jul-2023

There are two main ways of being released from a Georgia prison -- by actions of the Board of Pardons and Paroles ("Clemencies") and by service of 100% of the court-ordered sentences ("Maxouts"). "Clemency" includes paroles, reprieves, commutations, and transfer to other confinement prior to expiration of sentence.

"Other Releases" includes deaths, and sentences modified or overturned by the courts. Clemencies and maxouts may or may not be followed by periods of probation.



A. Clemency with probation to follow	falls by	2	from	463	to	461
B. Clemency only	RISES BY	2	from	71	to	73
C. Maxout with probation to follow	falls by	50	from	566	to	516
D. Maxout only (unsupervised)	falls by	20	from	63	to	43
E. Other releases	RISES BY	6	from	19	to	25
F. Total releases (A+B+C+D+E)	falls by	64	from	1182	to	1118
G. Total clemencies (A+B) (top line)	level	at	534
H. Total maxouts(C+D) (bottom line)	falls by	70	from	629	to	559
I. % of releases by clemency (G/F)	RISES BY	2.58%	from	45.18%	to	47.76%
J. % of releases by maxout (H/F)	falls by	3.21%	from	53.21%	to	50%
K. Supervised releases (A+B+C)	falls by	50	from	1100	to	1050
L. % unsupervised releases (D/F)	falls by	1.48%	from	5.33%	to	3.85%
M. % supervised releases (K/F)	RISES BY	.86%	from	93.06%	to	93.92%

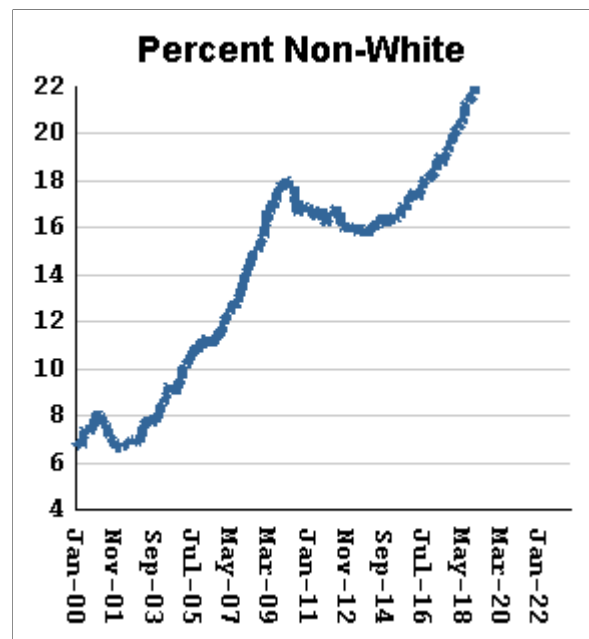
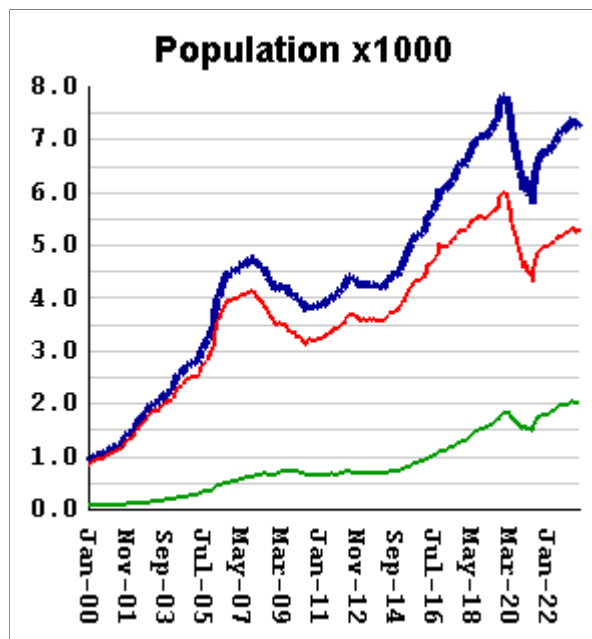
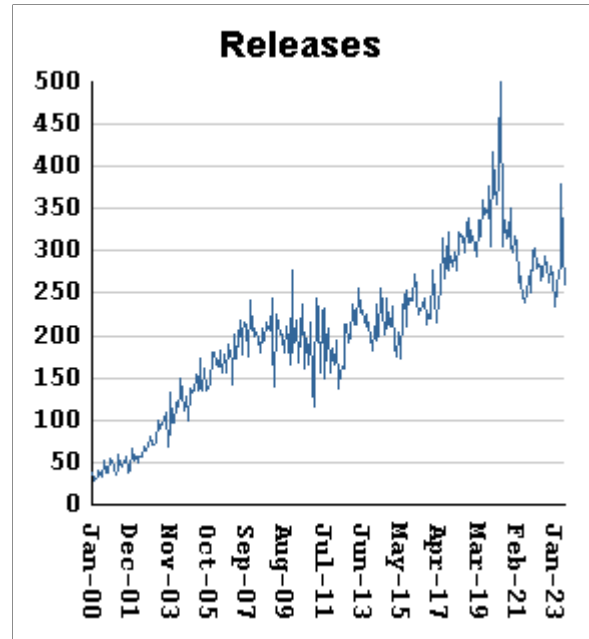
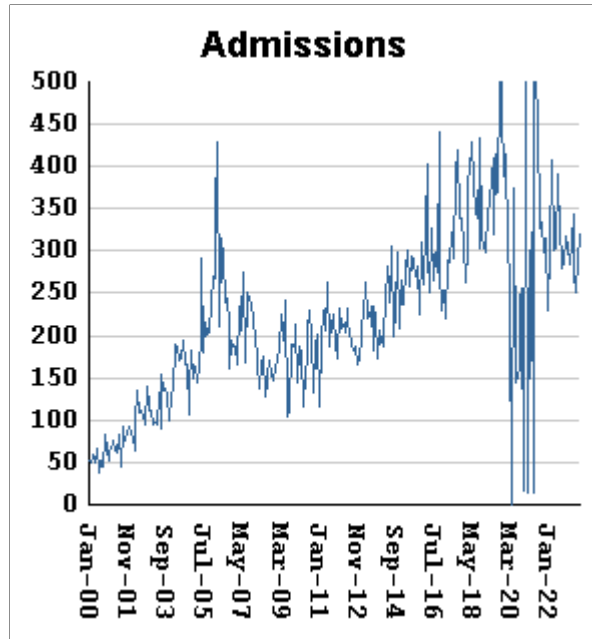
Monthly releases from prison by type of release, for the past 48 months

Month	A	B	C	D	E	F	G	H	I	J
	Clemency + Prob	Clemency Only	Maxout + Prob	Maxout Only	Other Rels	Total Releases (A+B+C+D+E)	Total Clemency (A+B)	Total Maxout (C+D)	Percent Clemency (G/F)	Percent Maxout (H/F)
Aug-19	640	121	694	88	4	1547	761	782	49.19%	50.55%
Sep-19	624	146	663	98	18	1549	770	761	49.71%	49.13%
Oct-19	638	134	707	81	12	1572	772	788	49.11%	50.13%
Nov-19	575	80	639	90	16	1400	655	729	46.79%	52.07%
Dec-19	756	121	637	77	24	1615	877	714	54.30%	44.21%
Jan-20	713	102	711	79	24	1629	815	790	50.03%	48.50%
Feb-20	633	105	688	90	21	1537	738	778	48.02%	50.62%
Mar-20	673	137	658	82	22	1572	810	740	51.53%	47.07%
Apr-20	699	118	812	105	19	1753	817	917	46.61%	52.31%
May-20	677	139	1094	154	28	2092	816	1248	39.01%	59.66%
Jun-20	717	127	534	54	15	1447	844	588	58.33%	40.64%
Jul-20	739	150	557	47	28	1521	889	604	58.45%	39.71%
Aug-20	677	144	514	55	34	1424	821	569	57.65%	39.96%
Sep-20	685	132	451	66	33	1367	817	517	59.77%	37.82%
Oct-20	697	119	515	71	29	1431	816	586	57.02%	40.95%
Nov-20	606	111	484	49	21	1271	717	533	56.41%	41.94%
Dec-20	626	97	447	60	18	1248	723	507	57.93%	40.63%
Jan-21	634	92	517	57	21	1321	726	574	54.96%	43.45%
Feb-21	616	96	481	63	20	1276	712	544	55.80%	42.63%
Mar-21	573	104	497	69	16	1259	677	566	53.77%	44.96%
Apr-21	532	97	456	60	24	1169	629	516	53.81%	44.14%
May-21	447	76	508	54	21	1106	523	562	47.29%	50.81%
Jun-21	367	86	472	65	21	1011	453	537	44.81%	53.12%
Jul-21	391	66	535	62	19	1073	457	597	42.59%	55.64%
Aug-21	412	69	533	63	28	1105	481	596	43.53%	53.94%
Sep-21	446	73	524	66	32	1141	519	590	45.49%	51.71%
Oct-21	451	74	527	55	21	1128	525	582	46.54%	51.60%
Nov-21	423	82	492	66	18	1081	505	558	46.72%	51.62%
Dec-21	470	81	483	56	18	1108	551	539	49.73%	48.65%
Jan-22	462	78	551	76	26	1193	540	627	45.26%	52.56%
Feb-22	443	81	466	70	24	1084	524	536	48.34%	49.45%
Mar-22	463	70	516	55	16	1120	533	571	47.59%	50.98%
Apr-22	458	70	473	68	16	1085	528	541	48.66%	49.86%
May-22	442	77	542	63	26	1150	519	605	45.13%	52.61%
Jun-22	457	64	530	56	21	1128	521	586	46.19%	51.95%
Jul-22	444	66	530	59	14	1113	510	589	45.82%	52.92%
Aug-22	426	66	621	64	21	1198	492	685	41.07%	57.18%
Sep-22	402	73	550	60	18	1103	475	610	43.06%	55.30%
Oct-22	376	59	608	60	23	1126	435	668	38.63%	59.33%
Nov-22	366	53	523	55	19	1016	419	578	41.24%	56.89%
Dec-22	345	57	551	58	28	1039	402	609	38.69%	58.61%
Jan-23	372	54	528	58	23	1035	426	586	41.16%	56.62%
Feb-23	392	43	498	50	17	1000	435	548	43.50%	54.80%
Mar-23	375	57	574	62	24	1092	432	636	39.56%	58.24%
Apr-23	390	58	574	53	26	1101	448	627	40.69%	56.95%
May-23	331	44	937	125	20	1457	375	1062	25.74%	72.89%
Jun-23	463	71	566	63	19	1182	534	629	45.18%	53.21%
Jul-23	461	73	516	43	25	1118	534	559	47.76%	50.00%

Inmates with meth crimes, by month, Jan-2000 to Jul-2023

Methamphetamine is one of the most addictive drugs ever known. At first it induces intense euphoria, but with continued use causes severe depression and physical deterioration, including the dental catastrophe known as "meth mouth".

Georgia's meth epidemic peaked in 2007-2008, then declined, but is again growing. It started in the predominantly white northern counties, with blacks accounting for only about 5% of convictions. But black usage has expanded, and now accounts for about 15% of convictions.



Methamphetamine admissions

RISE BY 30 from 291 to 321

Methamphetamine releases

fall by 38 from 299 to 261

Methamphetamine population

RISES BY 60 from 7250 to 7310

Meth white population

RISES BY 59 from 5233 to 5292

Meth non-white population

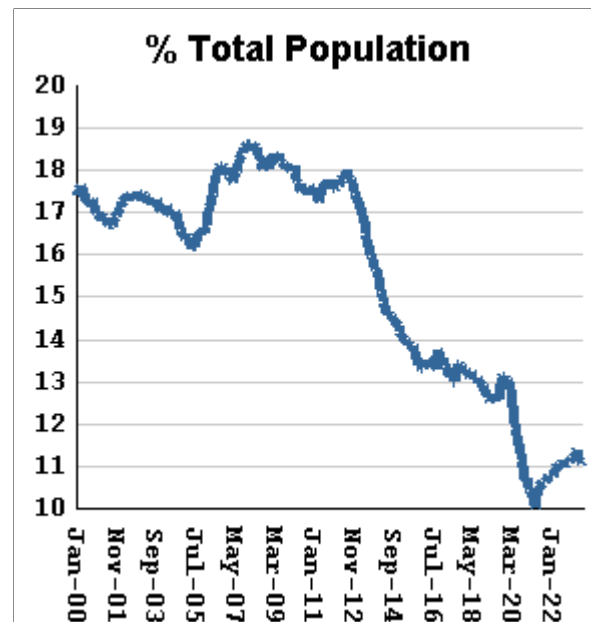
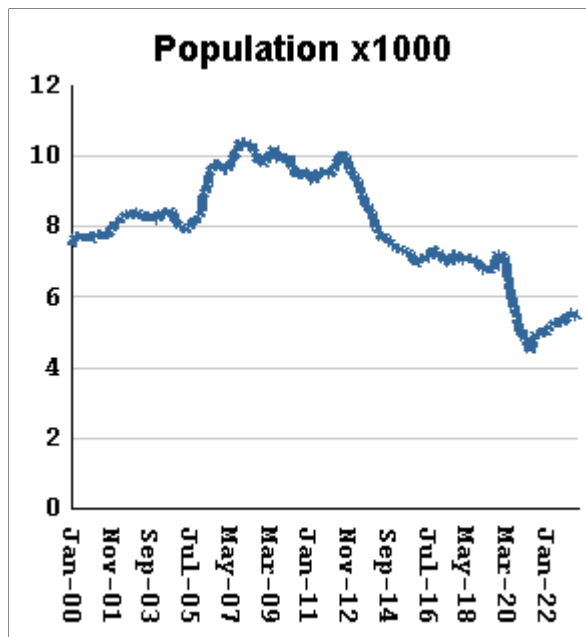
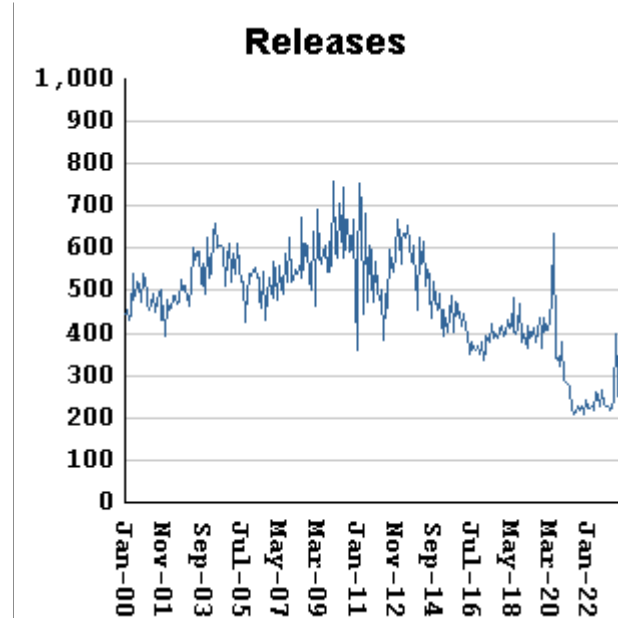
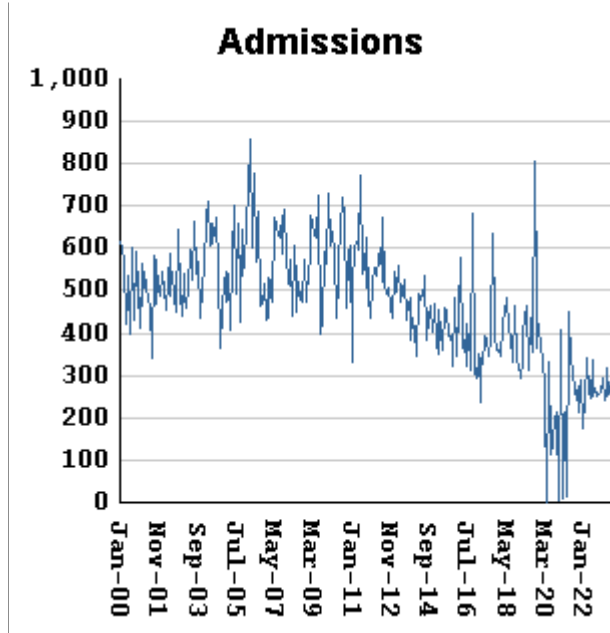
RISES BY 36 from 2018 to 2054

Percent meth inmates who are non-white

RISES BY .27 % from 27.83% to 28.1%

Non-violent first-incarcerants, by month, Jan-2000 to Jul-2023

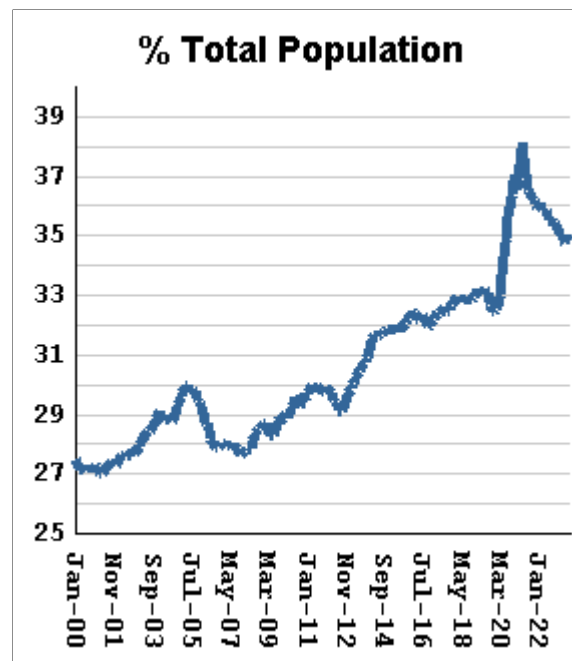
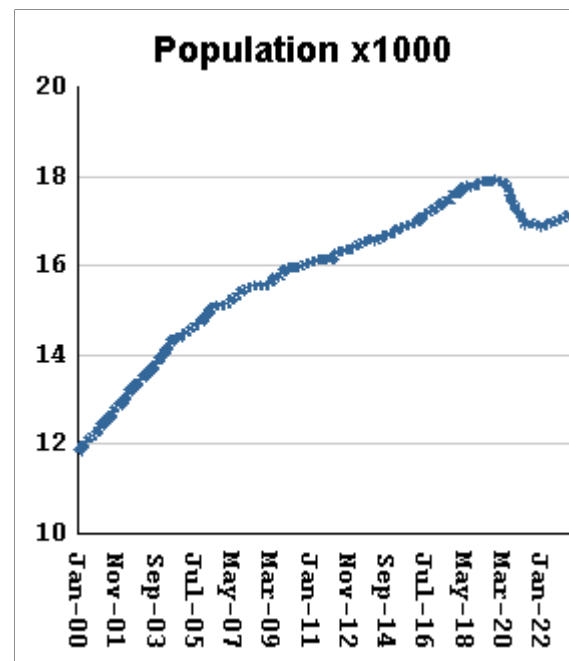
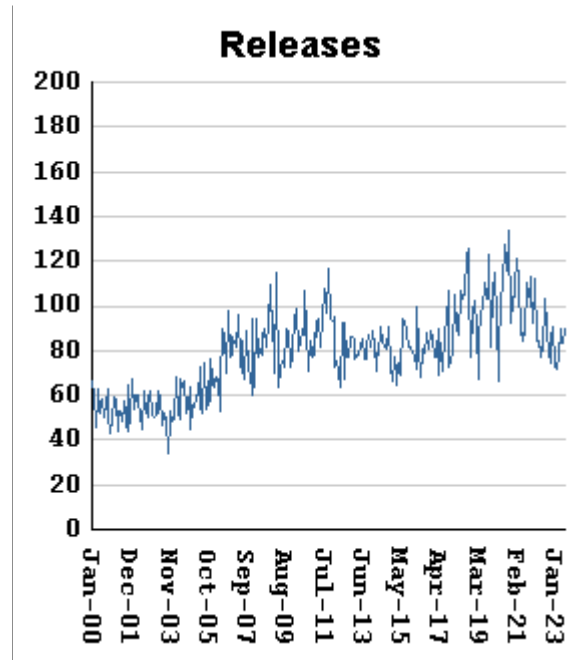
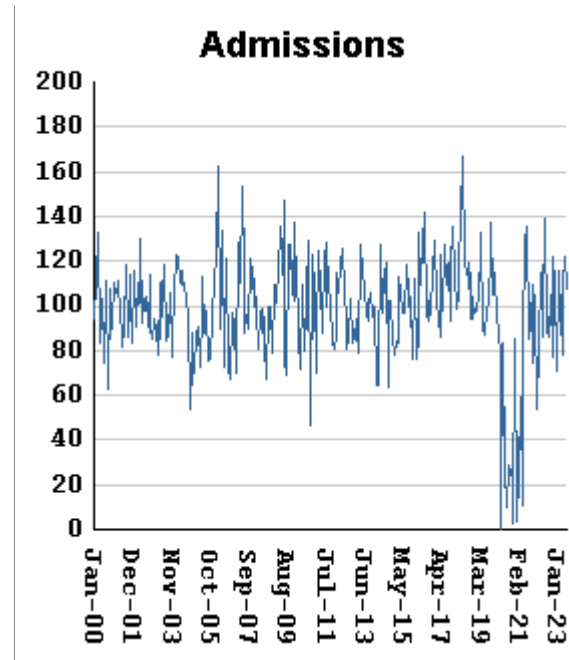
Historically, about one in six Georgia prison inmates has been a first-time incarcerant with a non-violent crime. In 2012 Georgia passed HB1176, which aimed to curb the growth of prison population by steering the least dangerous, least hardened offenders away from prison through pre-trial intervention, diversion, drug courts and treatment programs, and raising the dollar thresholds that define property felonies. The expectation is that over time, these measures will reduce the percentage of first-time non-violent incarcerants in prison.



Non-viol/1st-Incar admissions	fall by	30	from	290	to	260
Non-viol/1st-Incar releases	fall by	91	from	296	to	205
Non-viol/1st-Incar population	RISES BY	55	from	5448	to	5503
Non-viol/1st-Incar % of total population	RISES BY	.07 %	from	11.07%	to	11.14%

"Seven Deadly Sins" by month, Jan-2000 to Jul-2023

Tough legislation in 1995 imposed mandatory ten-year minimum terms for kidnapping, armed robbery, rape, aggravated sodomy, aggravated sexual battery, and aggravated child molestation, and a minimum of 25 years for murder. A second conviction resulted in life without parole. As predicted, longer prison terms caused population to climb steeply for about a decade. It then began to level off, as releases started catching up with admissions. The 2008 dip in percentage of total population (bottom right) was caused by the surge of methamphetamine convictions (Page MO-03). Note: these graphs include inmates convicted before 1995.



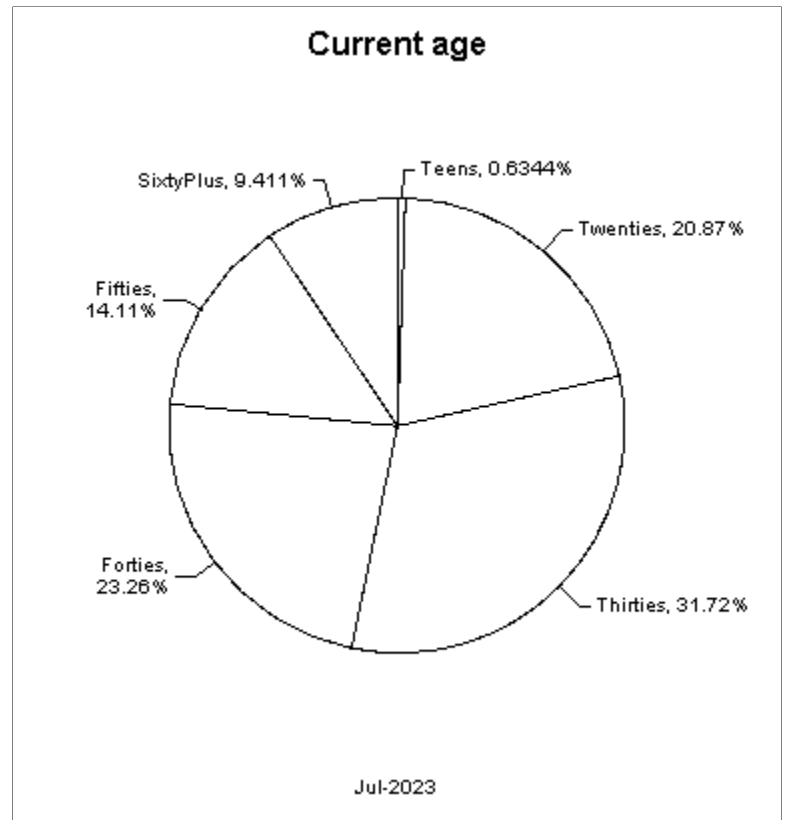
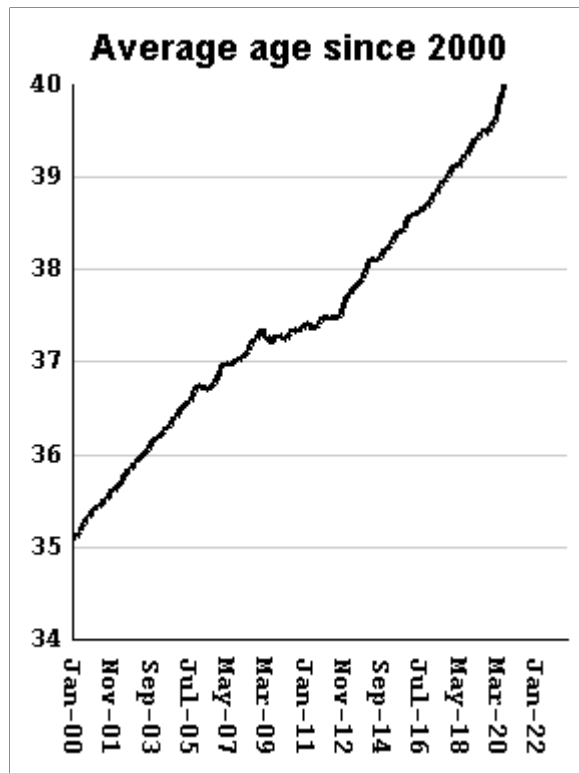
"Seven Deadly Sin" admissions	fall by	14	from	122	to	108
"Seven Deadly Sin" releases	RISE BY	7	from	83	to	90
"Seven Deadly Sin" population	RISES BY	18	from	17162	to	17180
"Seven Deadly Sin" % of total population	falls by	.07 %	from	34.86%	to	34.79%

Inmate subpopulation counts and percentages, for the past 48 months

Month	Methamphetamine						1st Incar Non-Violent		Seven Deadly Sins	
	Total Number	Total Percent	White Number	White Percent	Non White Number	Non White Percent	Number	Percent	Number	Percent
Aug-19	7324	13.57%	5648	77.12%	1687	23.03%	6788	12.57%	17871	33.10%
Sep-19	7649	13.97%	5933	77.57%	1754	22.93%	7161	13.08%	17882	32.66%
Oct-19	7738	14.05%	5952	76.92%	1795	23.20%	7238	13.14%	17896	32.50%
Nov-19	7822	14.18%	6005	76.77%	1825	23.33%	7238	13.12%	17919	32.48%
Dec-19	7819	14.17%	5988	76.58%	1838	23.51%	7224	13.09%	17926	32.48%
Jan-20	7749	14.08%	5937	76.62%	1818	23.46%	7169	13.03%	17905	32.54%
Feb-20	7724	14.08%	5885	76.19%	1845	23.89%	7107	12.96%	17902	32.64%
Mar-20	7577	13.97%	5769	76.14%	1813	23.93%	6938	12.79%	17912	33.02%
Apr-20	7162	13.64%	5428	75.79%	1739	24.28%	6452	12.29%	17833	33.97%
May-20	6996	13.51%	5300	75.76%	1701	24.31%	6152	11.88%	17813	34.41%
Jun-20	6835	13.44%	5237	76.62%	1681	24.59%	5930	11.66%	17729	34.87%
Jul-20	6650	13.36%	5020	75.49%	1635	24.59%	5699	11.45%	17612	35.38%
Aug-20	6502	13.28%	4898	75.33%	1608	24.73%	5497	11.22%	17525	35.79%
Sep-20	6425	13.29%	4909	76.40%	1589	24.73%	5376	11.12%	17416	36.02%
Oct-20	6329	13.27%	4775	75.45%	1558	24.62%	5213	10.93%	17346	36.36%
Nov-20	6042	12.99%	4536	75.07%	1509	24.98%	4928	10.60%	17239	37.07%
Dec-20	6291	13.32%	4713	74.92%	1581	25.13%	5053	10.70%	17226	36.48%
Jan-21	5989	13.04%	4486	74.90%	1506	25.15%	4784	10.41%	17121	37.27%
Feb-21	5961	13.11%	4481	75.17%	1532	25.70%	4701	10.34%	17024	37.45%
Mar-21	6019	13.26%	4470	74.26%	1552	25.79%	4648	10.24%	16972	37.38%
Apr-21	5763	12.99%	4272	74.13%	1494	25.92%	4443	10.02%	16896	38.10%
May-21	6097	13.50%	4567	74.91%	1595	26.16%	4683	10.37%	16889	37.39%
Jun-21	6358	13.85%	4711	74.10%	1682	26.45%	4801	10.46%	16935	36.88%
Jul-21	6576	14.14%	4851	73.77%	1728	26.28%	4888	10.51%	16981	36.51%
Aug-21	6649	14.25%	4906	73.79%	1755	26.39%	4924	10.55%	16956	36.34%
Sep-21	6717	14.36%	4947	73.65%	1773	26.40%	4961	10.60%	16953	36.24%
Oct-21	6738	14.40%	4963	73.66%	1778	26.39%	4962	10.60%	16914	36.14%
Nov-21	6797	14.49%	5016	73.80%	1793	26.38%	5018	10.69%	16918	36.06%
Dec-21	6810	14.47%	5023	73.76%	1790	26.28%	5062	10.76%	16927	35.97%
Jan-22	6736	14.42%	4976	73.87%	1790	26.57%	5014	10.74%	16869	36.12%
Feb-22	6760	14.46%	5000	73.96%	1812	26.80%	5037	10.78%	16867	36.09%
Mar-22	6882	14.60%	5035	73.16%	1849	26.87%	5149	10.93%	16898	35.86%
Apr-22	6903	14.63%	5046	73.10%	1859	26.93%	5193	11.00%	16907	35.82%
May-22	6941	14.69%	5072	73.07%	1888	27.20%	5181	10.96%	16925	35.82%
Jun-22	7058	14.80%	5143	72.87%	1919	27.19%	5277	11.06%	16984	35.61%
Jul-22	7083	14.81%	5150	72.71%	1935	27.32%	5271	11.02%	16970	35.49%
Aug-22	7133	14.91%	5201	72.91%	1955	27.41%	5311	11.10%	16965	35.46%
Sep-22	7149	14.92%	5175	72.39%	1975	27.63%	5295	11.05%	16993	35.46%
Oct-22	7154	14.93%	5195	72.62%	1984	27.73%	5317	11.09%	16982	35.43%
Nov-22	7189	14.91%	5243	72.93%	1984	27.60%	5351	11.10%	17030	35.32%
Dec-22	7225	14.89%	5242	72.55%	1984	27.46%	5421	11.17%	17049	35.13%
Jan-23	7275	14.95%	5273	72.48%	2017	27.73%	5447	11.20%	17047	35.04%
Feb-23	7330	15.01%	5304	72.36%	2041	27.84%	5479	11.22%	17091	34.99%
Mar-23	7395	15.04%	5349	72.33%	2047	27.68%	5572	11.33%	17107	34.79%
Apr-23	7387	15.02%	5353	72.47%	2035	27.55%	5584	11.36%	17095	34.77%
May-23	7258	14.82%	5263	72.51%	2020	27.83%	5454	11.14%	17123	34.97%
Jun-23	7250	14.73%	5233	72.18%	2018	27.83%	5448	11.07%	17162	34.86%
Jul-23	7310	14.80%	5292	72.39%	2054	28.10%	5503	11.14%	17180	34.79%

Overview of inmate age statistics, Jan-2000 to Jul-2023

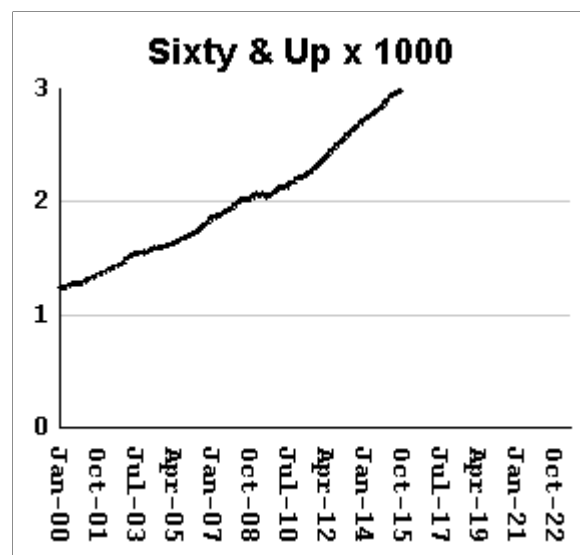
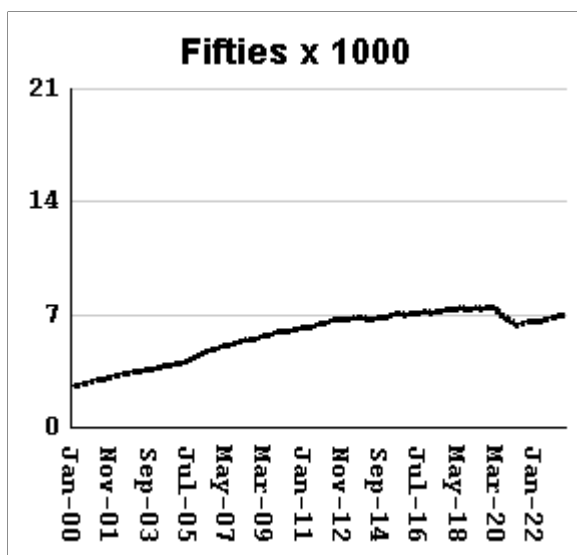
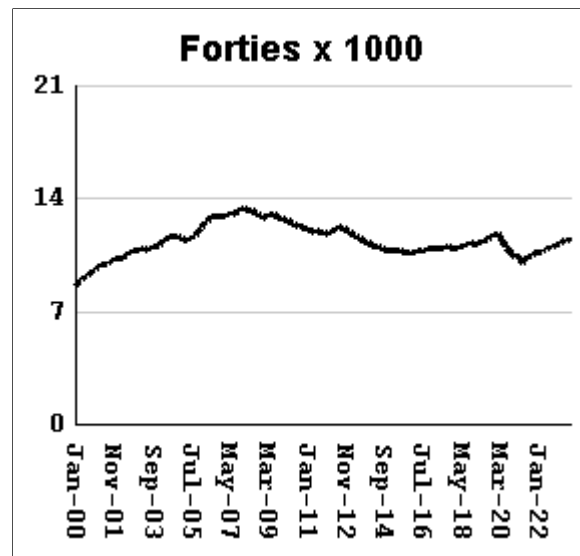
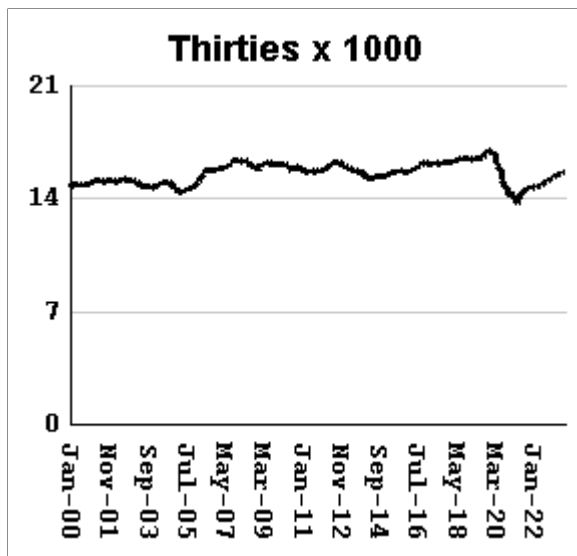
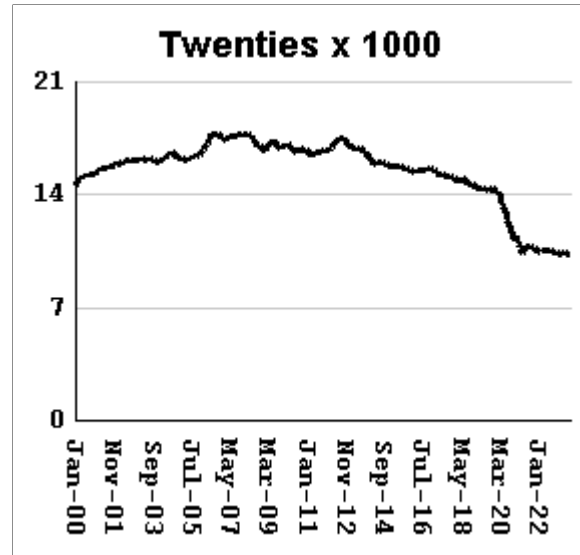
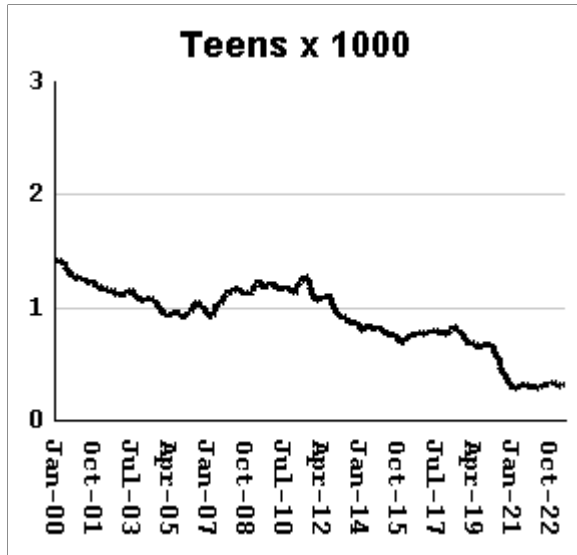
The "aging inmate population" is a concern in correctional systems throughout America, including Georgia. Here, the increase in inmate age is the result of several factors. Teenagers have been steered away from prison by increased usage of probation and other alternatives, at least for their first convictions. And there has been a surge of middle-aged male sex offenders due to the expanding "It's OK to tell" ethos. But most importantly, more severe sentence lengths and release policies have greatly increased the length of time that most offenders -- especially violent ones -- spend in prison, thereby increasing their average age.



Average age of active inmates	RISES BY	.03	from	41.17	to	41.2
Number in their teens	RISES BY	3	from	311	to	314
Percentage in their teens	RISES BY	.01%	from	.63%	to	0.64%
Number in their twenties	RISES BY	11	from	10,318	to	10,329
Percentage in their twenties	falls by	0.04%	from	20.96%	to	20.92%
Number in their thirties	RISES BY	72	from	15,627	to	15,699
Percentage in their thirties	RISES BY	0.04%	from	31.75%	to	31.79%
Number in their forties	RISES BY	112	from	11,400	to	11,512
Percentage in their forties	RISES BY	0.15%	from	23.16%	to	23.31%
Number in their fifties	RISES BY	37	from	6,945	to	6,982
Percentage in their fifties	RISES BY	0.03%	from	14.11%	to	14.14%
Number age sixty and up	RISES BY	35	from	4,623	to	4,658
Percentage age sixty and up	RISES BY	.04%	from	9.39%	to	9.43%

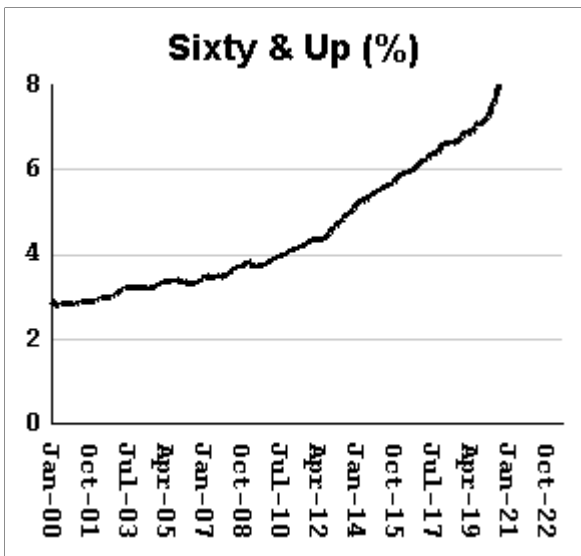
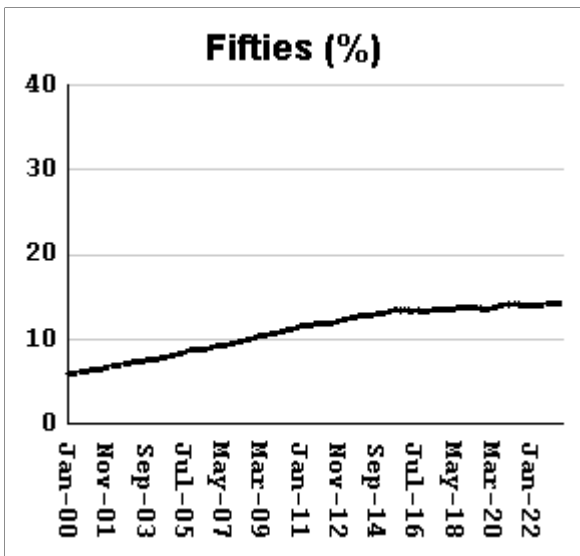
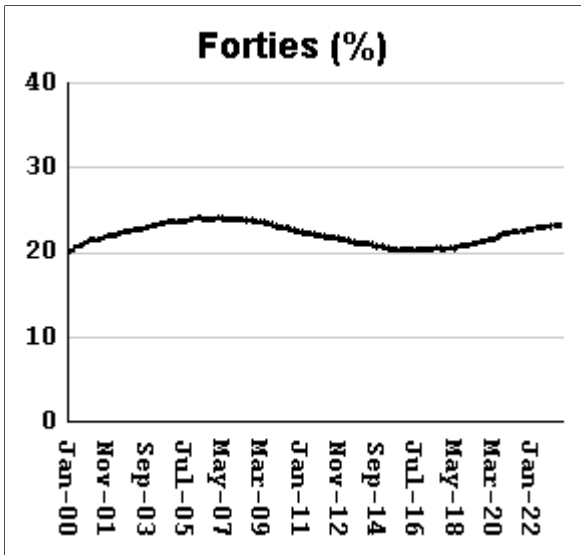
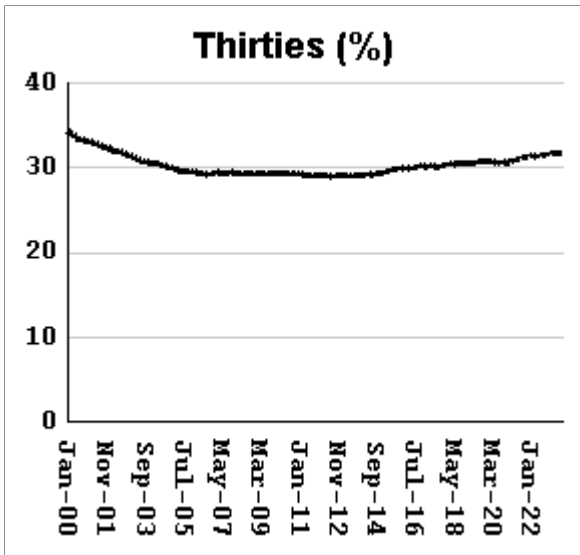
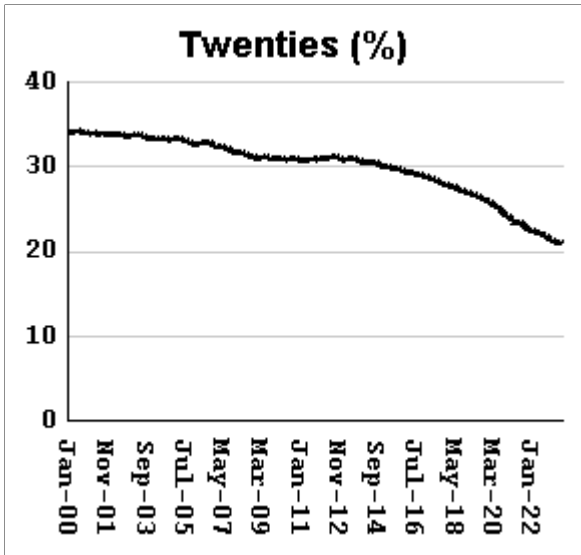
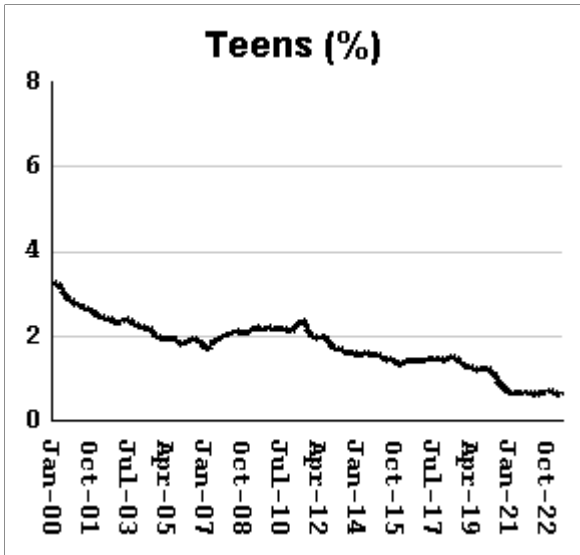
Monthly counts of inmates by age group, Jan-2000 to Jul-2023

Y-axis of Twenties/Thirties/Forties/Fifties runs from 0 to 21,000. Y-axis of Teens/Sixty+ runs from 0 to 3,000.



Monthly percentages of inmates by age group, Jan-2000 to Jul-2023

Y-axis of Twenties/Thirties/Forties/Fifties runs from 0% to 40%. Y-axis of Teens/Sixty+ runs from 0% to 8%

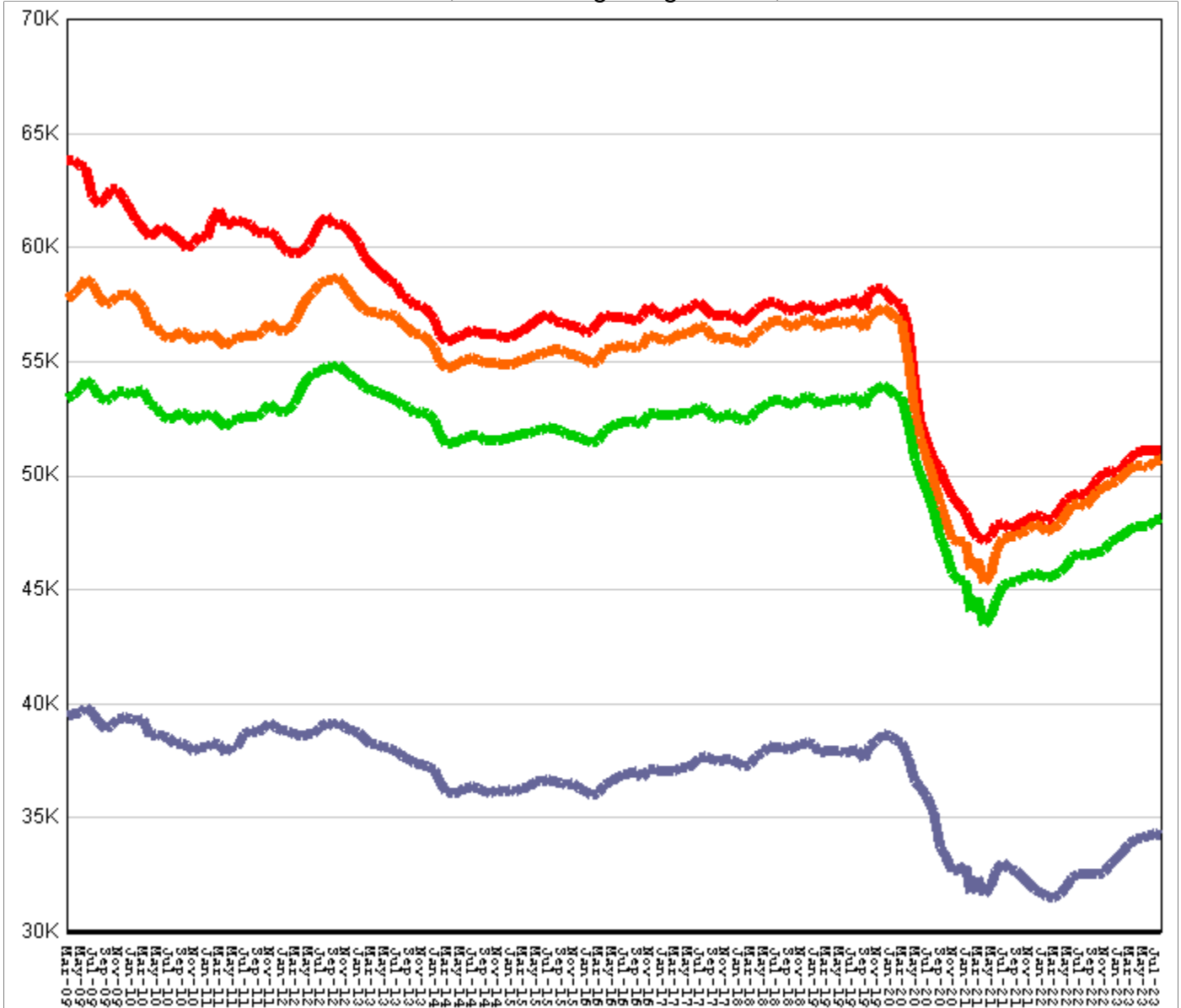


Inmate counts & percentages by age, for past 48 months

Month	Avg Age	Teens		Twenties		Thirties		Forties		Fifties		Sixty & Up	
		Num-ber	Per-cent	Num-ber	Per-cent	Num-ber	Per-cent	Num-ber	Per-cent	Num-ber	Per-cent	Num-ber	Per-cent
Aug-19	39.53	640	1.19%	14212	26.32%	16558	30.67%	11445	21.20%	7337	13.59%	3821	7.08%
Sep-19	39.48	657	1.20%	14432	26.36%	16895	30.85%	11660	21.29%	7411	13.53%	3877	7.08%
Oct-19	39.48	672	1.22%	14449	26.24%	16954	30.78%	11695	21.24%	7438	13.51%	3889	7.06%
Nov-19	39.52	667	1.21%	14403	26.10%	16987	30.79%	11737	21.27%	7472	13.54%	3925	7.11%
Dec-19	39.55	683	1.24%	14328	25.96%	16957	30.73%	11804	21.39%	7485	13.56%	3947	7.15%
Jan-20	39.58	679	1.23%	14216	25.84%	16917	30.75%	11826	21.50%	7436	13.52%	3957	7.19%
Feb-20	39.6	666	1.21%	14159	25.81%	16886	30.78%	11748	21.42%	7448	13.58%	3962	7.22%
Mar-20	39.67	642	1.18%	13927	25.67%	16677	30.74%	11629	21.44%	7404	13.65%	3981	7.34%
Apr-20	39.83	578	1.10%	13348	25.43%	16087	30.64%	11311	21.55%	7221	13.76%	3964	7.55%
May-20	39.86	563	1.09%	13115	25.33%	15850	30.62%	11202	21.64%	7123	13.76%	3929	7.59%
Jun-20	39.93	535	1.05%	12838	25.25%	15647	30.78%	11099	21.83%	7031	13.83%	3914	7.70%
Jul-20	40.06	481	0.97%	12402	24.92%	15203	30.54%	10897	21.89%	6923	13.91%	3882	7.80%
Aug-20	40.13	441	0.90%	12140	24.79%	14924	30.47%	10781	22.01%	6833	13.95%	3865	7.89%
Sep-20	40.19	418	0.86%	11931	24.68%	14821	30.66%	10719	22.17%	6790	14.04%	3874	8.01%
Oct-20	40.27	390	0.82%	11617	24.35%	14563	30.53%	10580	22.18%	6703	14.05%	3860	8.09%
Nov-20	40.4	352	0.76%	11181	24.04%	14202	30.54%	10354	22.27%	6573	14.13%	3850	8.28%
Dec-20	40.37	340	0.72%	11379	24.10%	14459	30.62%	10512	22.26%	6633	14.05%	3906	8.27%
Jan-21	40.49	304	0.66%	10955	23.85%	14070	30.63%	10265	22.34%	6470	14.08%	3885	8.46%
Feb-21	40.52	291	0.64%	10800	23.76%	14082	30.98%	10263	22.58%	6425	14.14%	3870	8.51%
Mar-21	40.56	296	0.65%	10673	23.51%	14010	30.86%	10173	22.41%	6374	14.04%	3884	8.55%
Apr-21	40.68	272	0.61%	10322	23.27%	13651	30.78%	9962	22.46%	6282	14.16%	3867	8.72%
May-21	40.62	290	0.64%	10590	23.45%	14029	31.06%	10174	22.53%	6374	14.11%	3920	8.68%
Jun-21	40.58	306	0.67%	10784	23.49%	14254	31.04%	10280	22.39%	6452	14.05%	3976	8.66%
Jul-21	40.58	315	0.68%	10860	23.35%	14438	31.04%	10384	22.33%	6497	13.97%	4019	8.64%
Aug-21	40.6	316	0.68%	10805	23.16%	14537	31.16%	10472	22.45%	6516	13.97%	4042	8.66%
Sep-21	40.64	315	0.67%	10746	22.97%	14607	31.22%	10496	22.44%	6525	13.95%	4097	8.76%
Oct-21	40.68	297	0.63%	10647	22.75%	14658	31.32%	10575	22.59%	6529	13.95%	4107	8.77%
Nov-21	40.69	298	0.64%	10633	22.66%	14715	31.36%	10653	22.70%	6536	13.93%	4124	8.79%
Dec-21	40.72	302	0.64%	10604	22.53%	14743	31.33%	10691	22.72%	6569	13.96%	4152	8.82%
Jan-22	40.78	293	0.63%	10483	22.45%	14649	31.37%	10644	22.79%	6574	14.08%	4159	8.91%
Feb-22	40.79	298	0.64%	10484	22.43%	14687	31.42%	10671	22.83%	6573	14.06%	4179	8.94%
Mar-22	40.79	295	0.63%	10533	22.35%	14779	31.36%	10734	22.78%	6584	13.97%	4208	8.93%
Apr-22	40.82	285	0.60%	10526	22.30%	14772	31.30%	10790	22.86%	6605	13.99%	4224	8.95%
May-22	40.86	281	0.59%	10510	22.24%	14823	31.37%	10823	22.90%	6606	13.98%	4260	9.01%
Jun-22	40.84	306	0.64%	10597	22.22%	14939	31.32%	10933	22.92%	6637	13.92%	4287	8.99%
Jul-22	40.88	315	0.66%	10553	22.07%	14982	31.33%	10975	22.95%	6679	13.97%	4314	9.02%
Aug-22	40.92	317	0.66%	10522	22.00%	15028	31.42%	11017	23.03%	6715	14.04%	4356	9.11%
Sep-22	40.97	314	0.66%	10439	21.78%	15050	31.41%	10988	22.93%	6742	14.07%	4389	9.16%
Oct-22	40.99	321	0.67%	10380	21.66%	15135	31.58%	11042	23.04%	6757	14.10%	4406	9.19%
Nov-22	41	332	0.69%	10404	21.58%	15239	31.61%	11144	23.11%	6805	14.11%	4450	9.23%
Dec-22	41.03	338	0.70%	10367	21.36%	15321	31.57%	11167	23.01%	6858	14.13%	4483	9.24%
Jan-23	41.06	326	0.67%	10345	21.26%	15403	31.66%	11205	23.03%	6878	14.14%	4526	9.30%
Feb-23	41.09	315	0.64%	10347	21.18%	15471	31.67%	11295	23.12%	6882	14.09%	4577	9.37%
Mar-23	41.08	316	0.64%	10400	21.15%	15560	31.65%	11384	23.15%	6931	14.10%	4578	9.31%
Apr-23	41.12	304	0.62%	10393	21.14%	15562	31.65%	11393	23.17%	6934	14.10%	4586	9.33%
May-23	41.14	310	0.63%	10348	21.13%	15564	31.78%	11368	23.22%	6927	14.15%	4601	9.40%
Jun-23	41.17	311	0.63%	10318	20.96%	15627	31.75%	11400	23.16%	6945	14.11%	4623	9.39%
Jul-23	41.2	314	0.64%	10329	20.92%	15699	31.79%	11512	23.31%	6982	14.14%	4658	9.43%

All housed offenders under GDC jurisdiction

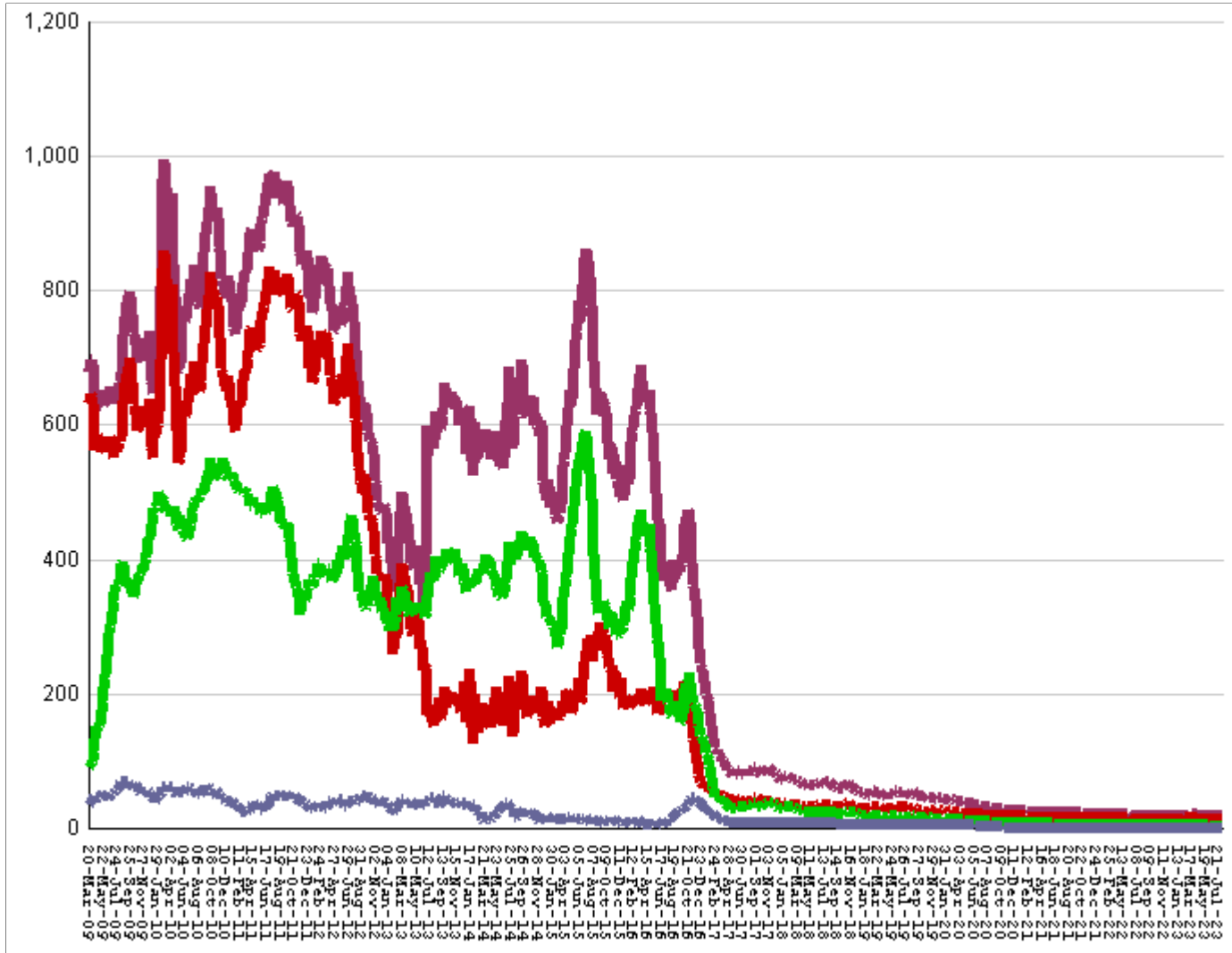
March 20, 2009 through August 11, 2023



All in bed + probs in jail + backlog	fall by	100	from	51,154	to	51,054
Probationers in jail	18	at	18
Inmate jail backlog	falls by	79	from	411	to	332
All in beds: inmate + Prob + parole	fall by	21	from	50,725	to	50,704
Total probationers in beds	RISE BY	16	from	2,585	to	2,601
Probation detention centers	fall by	19	from	1,206	to	1,187
Probation boot camps	fall by		from		to	
Probation RSAT	RISE BY	35	from	1379	to	1,414
Parole revocation centers	fall by		from		to	
All in inmate beds: state + other	fall by	37	from	48,140	to	48,103
Other inmate facilities :	fall by	1	from	13,924	to	13,923
Inmate boot camps	1	at	1
Private prisons	fall by	16	from	7159	to	7,143
County prisons	RISE BY	27	from	4551	to	4,578
Transitional centers	fall by	12	from	2213	to	2,201
In state prisons only	fall by	36	from	34,216	to	34,180

Probationers in jail awaiting placement in facilities

March 20, 2009 through August 11, 2023



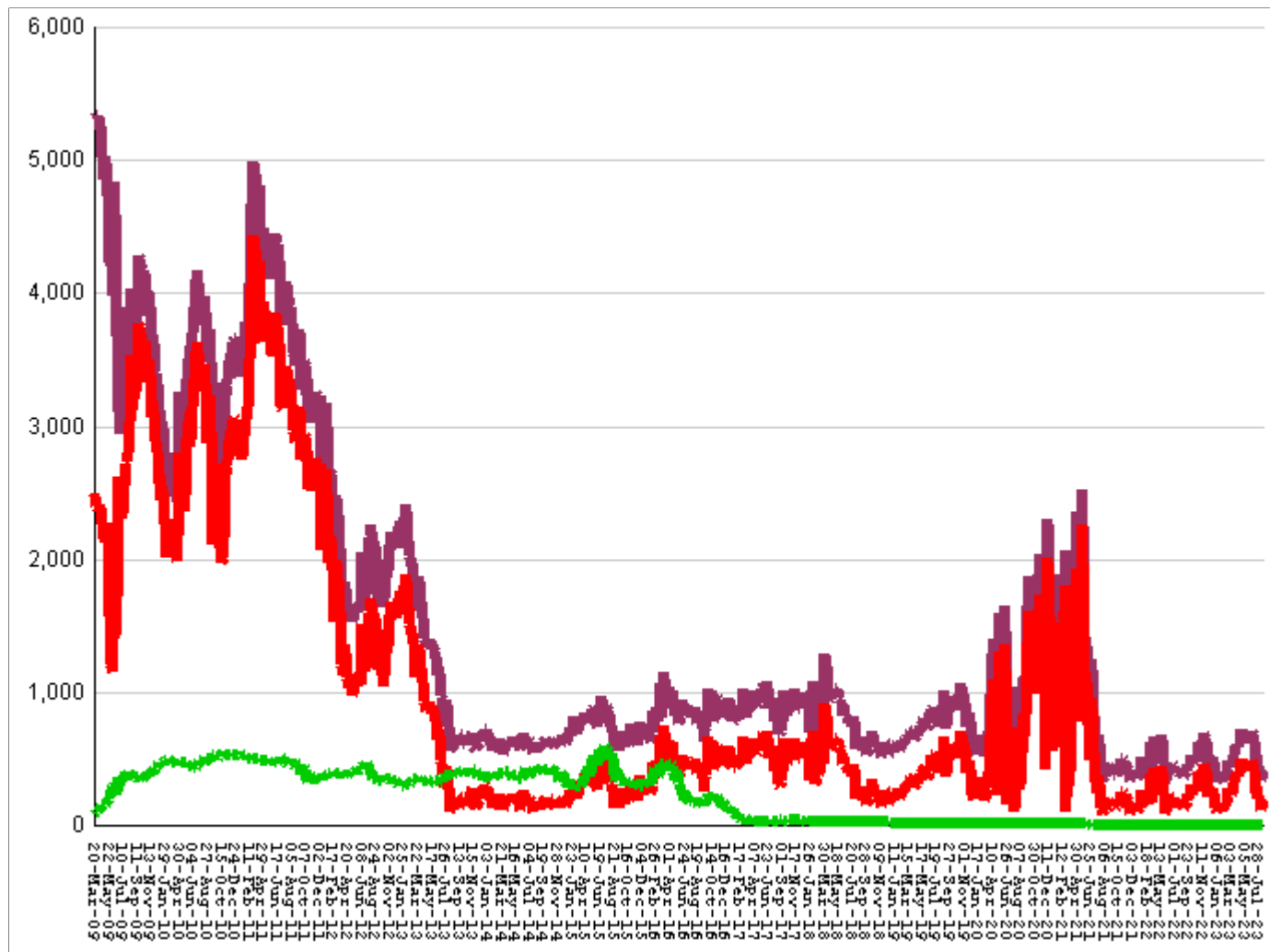
This graph shows, for each Friday since March 20 2009, the number of sentenced felony probationers who were waiting in jail for placement in facilities that GDC operates for housing probationers -- detention centers, probation residential substance abuse treatment (RSAT) centers, and probation boot camps. Counts include both those offenders sentenced directly from court, and those whose street probation was revoked.

Total probationers waiting in jail	level	at	18
... waiting for detention centers	level	at	14
... waiting for probation RSAT	level	at	3
... waiting for probation boot camps	level	at	1

The highest number of probationers waiting in jail was	994	on	05-MAR-10
... highest number waiting for detention centers was	859	on	05-MAR-10
... highest number waiting for probation RSAT was	592	on	10-JUL-15
... highest number waiting for probation boot camps was	70	on	18-SEP-09

State inmates in jail awaiting placement in facilities

March 20, 2009 through August 11, 2023



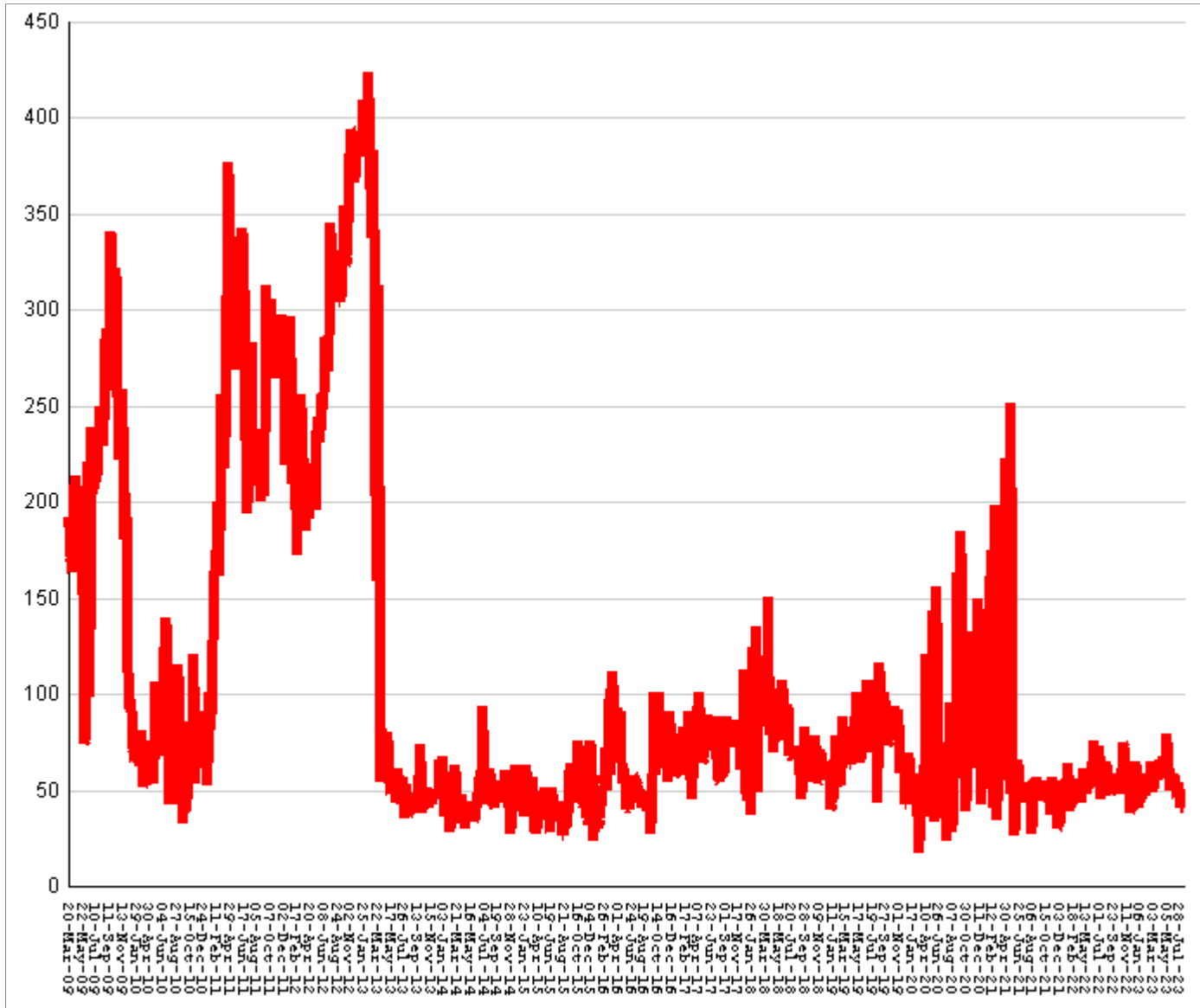
This graph shows, for each Friday since March 2009, the number of prisoners, probationers, and parolees in local jails who have been sentenced or revoked to state prison and whose documents have been received and verified by GDC. Most are almost immediately assigned to a diagnostic center, and are designated as in "admission processing". Of those a few hundred may be in the "transportation delayed" category because there is no room in the assigned diagnostic center, or because the inmate is being held for medical reasons, or for other court proceedings, or other reasons. Those remaining are "ready to be picked up".

Total state inmates waiting in jail	fall by	79	from	411	to	332
... not yet assigned to a diagnostic center	level	at	26
... total "in admission processing"	fall by	79	from	385	to	306
... with "transportation delayed"	fall by	4	from	196	to	192
... ready to be picked up	fall by	75	from	189	to	114

The highest number of state inmates waiting in jail was	5338	on	27-MAR-09
... highest number not asg to a diagnostic center was	2881	on	12-JUN-09
... highest number in admission processing was	4916	on	25-MAR-11
... highest number with transportation delayed was	645	on	14-JAN-11
... highest number ready to be pickup was	4435	on	25-MAR-11

Female state inmates in jail awaiting pickup

March 20, 2009 through August 11, 2023



This graph shows, for each Friday since March 2009, the number of female state prisoners in local jails who were assigned to diagnostic centers but had not yet been picked up.

Female state inmates in jails waiting picked up	level	at	41
The highest number of female inmates waiting in jail was	424	on	01-FEB-13			
The lowest number of female inmates waiting in jail was	17	on	20-MAR-20			

Summary of housed prisoners, parolees, and probationers

Week ending	Prison	Parole	Probation			Prison+parole+probation	Jail		Total
	Total inmates	Revocation centers	Prob RSAT	Boot camp	Detention		Inmate backlog	Probationers	Prison+parole+probation+jail
19-Aug-2022	46444		1278		865	48587	383	18	48988
26-Aug-2022	46502		1355		888	48745	418	18	49181
02-Sep-2022	46519		1349		897	48765	469	18	49252
09-Sep-2022	46432		1418		985	48835	439	18	49292
16-Sep-2022	46557		1472		1017	49046	400	18	49464
23-Sep-2022	46540		1536		1037	49113	457	18	49588
30-Sep-2022	46617		1468		1075	49160	533	18	49711
07-Oct-2022	46650		1515		1096	49261	468	18	49747
14-Oct-2022	46618		1546		1048	49212	471	18	49701
21-Oct-2022	46627		1577		1027	49231	482	18	49731
28-Oct-2022	46634		1635		1105	49374	629	18	50021
04-Nov-2022	46603		1631		1153	49387	623	18	50028
11-Nov-2022	46673		1597		1117	49387	626	18	50031
18-Nov-2022	46751		1616		1087	49454	658	18	50130
25-Nov-2022	46825		1605		1089	49519	688	18	50225
02-Dec-2022	46925		1604		1060	49589	537	18	50144
09-Dec-2022	46898		1530		1058	49486	507	18	50011
16-Dec-2022	46957		1582		1071	49610	506	18	50134
23-Dec-2022	47168		1557		1063	49788	481	18	50287
30-Dec-2022	47266		1547		1002	49815	447	18	50280
06-Jan-2023	47175		1538		973	49686	342	18	50046
13-Jan-2023	47229		1580		976	49785	355	18	50158
20-Jan-2023	47219		1568		1029	49816	354	18	50188
27-Jan-2023	47244		1556		981	49781	321	18	50120
03-Feb-2023	47232		1558		1022	49812	374	18	50204
10-Feb-2023	47232		1554		1022	49808	338	18	50164
17-Feb-2023	47419		1534		1048	50001	395	19	50415
24-Feb-2023	47485		1535		1086	50106	380	19	50505
03-Mar-2023	47519		1524		1114	50157	443	19	50619
10-Mar-2023	47533		1505		1081	50119	432	20	50571
17-Mar-2023	47598		1557		1101	50256	433	19	50708
24-Mar-2023	47637		1598		1048	50283	484	20	50787
31-Mar-2023	47798		1572		1091	50461	518	20	50999
07-Apr-2023	47709		1551		1111	50371	584	20	50975
14-Apr-2023	47660		1573		1093	50326	579	20	50925
21-Apr-2023	47659		1577		1079	50315	610	19	50944
28-Apr-2023	47834		1584		1086	50504	599	19	51122
05-May-2023	47780		1531		1092	50403	628	19	51050
12-May-2023	47668		1568		1114	50350	657	19	51026
19-May-2023	47804		1601		1108	50513	643	19	51175
26-May-2023	47740		1548		1102	50390	717	19	51126
02-Jun-2023	47646		1535		1118	50299	678	19	50996
09-Jun-2023	47610		1489		1130	50229	671	19	50919
16-Jun-2023	47620		1522		1150	50292	705	18	51015
23-Jun-2023	47727		1481		1152	50360	694	18	51072
30-Jun-2023	47959		1411		1183	50553	713	18	51284
07-Jul-2023	47942		1380		1181	50503	526	18	51047
14-Jul-2023	48007		1383		1163	50553	445	18	51016
21-Jul-2023	48125		1375		1184	50684	464	18	51166
28-Jul-2023	48154		1413		1202	50769	415	18	51202
04-Aug-2023	48140		1379		1206	50725	411	18	51154
11-Aug-2023	48103		1414		1187	50704	332	18	51054

Offenders housed in facilities for state prisoners

Week ending	In state prisons	In facilities other than state prisons						Total Inmates
		Transition centers	County prisons	Pre-rel centers	Private prisons	Inmate boot camps	Total others	
19-Aug-2022	32461	2226	4437		7320	0	13983	46444
26-Aug-2022	32465	2231	4467		7339	0	14037	46502
02-Sep-2022	32452	2207	4521		7339	0	14067	46519
09-Sep-2022	32405	2205	4496		7326	0	14027	46432
16-Sep-2022	32515	2227	4488		7327	0	14042	46557
23-Sep-2022	32527	2227	4449		7337	0	14013	46540
30-Sep-2022	32605	2236	4439		7337	0	14012	46617
07-Oct-2022	32565	2244	4505		7336	0	14085	46650
14-Oct-2022	32515	2230	4538		7335	0	14103	46618
21-Oct-2022	32509	2234	4529		7355	0	14118	46627
28-Oct-2022	32524	2233	4563		7314	0	14110	46634
04-Nov-2022	32530	2206	4584		7282	1	14073	46603
11-Nov-2022	32556	2228	4596		7292	1	14117	46673
18-Nov-2022	32619	2241	4616		7274	1	14132	46751
25-Nov-2022	32718	2219	4614		7273	1	14107	46825
02-Dec-2022	32792	2226	4610		7296	1	14133	46925
09-Dec-2022	32828	2225	4549		7295	1	14070	46898
16-Dec-2022	32931	2232	4516		7277	1	14026	46957
23-Dec-2022	33119	2243	4532		7273	1	14049	47168
30-Dec-2022	33205	2245	4531		7284	1	14061	47266
06-Jan-2023	33185	2229	4505		7255	1	13990	47175
13-Jan-2023	33197	2212	4580		7239	1	14032	47229
20-Jan-2023	33224	2195	4585		7214	1	13995	47219
27-Jan-2023	33290	2216	4577		7160	1	13954	47244
03-Feb-2023	33321	2194	4580		7136	1	13911	47232
10-Feb-2023	33392	2178	4575		7086	1	13840	47232
17-Feb-2023	33585	2178	4577		7078	1	13834	47419
24-Feb-2023	33665	2181	4589		7049	1	13820	47485
03-Mar-2023	33701	2184	4579		7054	1	13818	47519
10-Mar-2023	33777	2183	4537		7035	1	13756	47533
17-Mar-2023	33873	2187	4511		7026	1	13725	47598
24-Mar-2023	33889	2205	4545		6997	1	13748	47637
31-Mar-2023	34007	2231	4570		6989	1	13791	47798
07-Apr-2023	33971	2214	4571		6952	1	13738	47709
14-Apr-2023	33982	2160	4575		6942	1	13678	47660
21-Apr-2023	34063	2143	4536		6916	1	13596	47659
28-Apr-2023	34156	2160	4616		6901	1	13678	47834
05-May-2023	34134	2110	4645		6890	1	13646	47780
12-May-2023	33978	2190	4615		6884	1	13690	47668
19-May-2023	34127	2233	4555		6888	1	13677	47804
26-May-2023	34113	2231	4506		6889	1	13627	47740
02-Jun-2023	34064	2218	4477		6886	1	13582	47646
09-Jun-2023	34152	2191	4393		6873	1	13458	47610
16-Jun-2023	34202	2186	4352		6879	1	13418	47620
23-Jun-2023	34273	2191	4387		6875	1	13454	47727
30-Jun-2023	34378	2216	4468		6896	1	13581	47959
07-Jul-2023	34264	2185	4514		6978	1	13678	47942
14-Jul-2023	34225	2198	4468		7115	1	13782	48007
21-Jul-2023	34267	2199	4508		7150	1	13858	48125
28-Jul-2023	34265	2195	4519		7174	1	13889	48154
04-Aug-2023	34216	2213	4551		7159	1	13924	48140
11-Aug-2023	34180	2201	4578		7143	1	13923	48103

Offenders waiting in local jails for state facilities

Week ending	Probationers waiting in jail				State prisoners waiting in jail					Assigned females
	.. for PDCs	.. for RSAT	.. for boot camps	Total	Total backlog	Not yet assigned	In adm process	Delayed transport	Ready for pickup	
19-Aug-2022	14	4	0	18	383	38	345	194	151	65
26-Aug-2022	14	4	0	18	418	39	379	187	192	65
02-Sep-2022	14	4	0	18	469	37	432	188	244	56
09-Sep-2022	14	4	0	18	439	37	402	190	212	57
16-Sep-2022	14	4	0	18	400	39	361	187	174	48
23-Sep-2022	14	4	0	18	457	38	419	187	232	52
30-Sep-2022	14	4	0	18	533	38	495	187	308	56
07-Oct-2022	14	4	0	18	468	37	431	184	247	57
14-Oct-2022	14	4	0	18	471	36	435	187	248	48
21-Oct-2022	14	4	0	18	482	35	447	183	264	58
28-Oct-2022	14	4	0	18	629	35	594	188	406	75
04-Nov-2022	14	4	0	18	623	35	588	183	405	72
11-Nov-2022	14	4	0	18	626	34	592	187	405	53
18-Nov-2022	14	4	0	18	658	35	623	195	428	61
25-Nov-2022	14	4	0	18	688	36	652	193	459	56
02-Dec-2022	14	4	0	18	537	36	501	194	307	38
09-Dec-2022	14	4	0	18	507	37	470	191	279	41
16-Dec-2022	14	4	0	18	506	39	467	192	275	58
23-Dec-2022	14	4	0	18	481	40	441	196	245	65
30-Dec-2022	14	4	0	18	447	39	408	197	211	44
06-Jan-2023	14	4	0	18	342	38	304	194	110	41
13-Jan-2023	14	4	0	18	355	37	318	195	123	45
20-Jan-2023	14	4	0	18	354	35	319	192	127	42
27-Jan-2023	14	4	0	18	321	34	287	194	93	53
03-Feb-2023	14	4	0	18	374	33	341	191	150	58
10-Feb-2023	14	4	0	18	338	32	306	189	117	47
17-Feb-2023	15	4	0	19	395	32	363	191	172	59
24-Feb-2023	15	4	0	19	380	31	349	191	158	51
03-Mar-2023	15	4	0	19	443	30	413	189	224	49
10-Mar-2023	16	4	0	20	432	29	403	178	225	50
17-Mar-2023	15	4	0	19	433	30	403	181	222	59
24-Mar-2023	15	4	1	20	484	29	455	181	274	65
31-Mar-2023	15	4	1	20	518	31	487	184	303	56
07-Apr-2023	15	4	1	20	584	30	554	188	366	56
14-Apr-2023	15	4	1	20	579	29	550	191	359	55
21-Apr-2023	14	4	1	19	610	27	583	188	395	66
28-Apr-2023	14	4	1	19	599	28	571	192	379	61
05-May-2023	14	4	1	19	628	27	601	191	410	79
12-May-2023	14	4	1	19	657	29	628	189	439	62
19-May-2023	14	4	1	19	643	27	616	190	426	56
26-May-2023	14	4	1	19	717	28	689	193	496	68
02-Jun-2023	14	4	1	19	678	26	652	197	455	54
09-Jun-2023	14	4	1	19	671	27	644	194	450	52
16-Jun-2023	14	3	1	18	705	26	679	199	480	59
23-Jun-2023	14	3	1	18	694	27	667	208	459	50
30-Jun-2023	14	3	1	18	713	27	686	203	483	66
07-Jul-2023	14	3	1	18	526	27	499	203	296	49
14-Jul-2023	14	3	1	18	445	26	419	204	215	41
21-Jul-2023	14	3	1	18	464	26	438	200	238	46
28-Jul-2023	14	3	1	18	415	26	389	192	197	54
04-Aug-2023	14	3	1	18	411	26	385	196	189	41
11-Aug-2023	14	3	1	18	332	26	306	192	114	41