

Friday Report – overview and contents

The pages in The Friday Report are about adult offenders in Georgia's prisons and jails. They contain statistical snapshots and trends in the populations and movements of offenders in the state prison system, on probation, on parole, and in local jails. Information comes from databases of the Georgia Department of Corrections (GDC) and the Board of Pardons and Paroles, and from data provided by local jailers. Information is summarized into tables in the GDC/Parole Data Warehouse, and is extracted into these pages each Friday. Pages are organized according to the table that supplied the data.

The Monthly Research Table, named "MO_RESRCH" or simply "MO", contains data about state prisoners, grouped into statistically interesting categories. The table contains one record per month, from January 2000 to the present. Despite its being "monthly", it is updated weekly, because some data trickles in for several weeks before it becomes stable history.	
Page	Contents
MO-01	Clemencies and maxouts. Monthly graph from 2000 to present shows the monthly departures from prison via actions by the Georgia Parole Board (clemencies), and via service of 100% of the court ordered sentence (maxouts)
MO-02	48 months of releases. Table shows counts and percentages of releases via clemencies and maxouts, with and without probation to follow, for each of the past 48 months.
MO-03	Methamphetamine. Monthly graph from 2000 to present shows admissions, departures, population, and percent of population of inmates with a current offense of methamphetamine possession, sale, manufacturing, or trafficking, and the changing racial composition of the methamphetamine population.
MO-04	Non-violent first incarcerants. Monthly graph from 2000 to present shows admissions, departures, population, and percent of population of inmates without violent or sex crimes, who are serving their first Georgia felony incarceration.
MO-05	Seven Deadly Sins. Monthly graph from 2000 to present shows admissions, departures, population, and percent of population of inmates convicted of kidnapping, armed robbery, rape, aggravated sodomy, aggravated sexual battery, and aggravated child molestation, for whom especially severe penalties are prescribed.
MO-06	48 months of inmate subpopulations. Table shows number and percentage of white and non-white inmates with methamphetamine offenses, and non-violent first incarcerants, and inmates convicted of the Seven Deadly Sins.
MO-07	Inmate age overview. Line graph shows the average age of the inmate population, by month from 2000 to the present. Pie chart shows the number of currently active inmates in their teens, twenties, thirties, forties, fifties, and age sixty+.
MO-08	Counts by age group. Graphs show the count, by month from 2000 to the present, of inmates in their teens, twenties, thirties, forties, fifties, and age sixty+.
MO-09	Percentages by age group. Graphs show the <i>percentages</i> , by month from 2000 to the present, of inmates in their teens, twenties, thirties, forties, fifties, and age sixty+.
MO-10	48 months of inmate ages. Table shows average age of the standing population, and counts and percentages of teens, twenties, thirties, forties, fifties, and sixty+, for each of the past 48 months.

Friday Report – overview and contents (*continued*)

The MSR Table is based on the Management Summary Report (MSR), a snapshot report posted each week in GDC's Scribe database. MSR_RESRCH gathers that data into weekly trends, with one record for each Friday since March 20th, 2009.

Page	Contents
MSR-01	All housed offenders. Weekly graph from March 20, 2009 to present, showing counts of inmates in state prisons, transitional centers, county prisons, private prisons, inmate boot camps, parole revocation centers, probation Residential Substance Abuse Treatment (RSAT), probation boot camps, probation detention centers, plus the inmate jail backlog and probationers in jail waiting for state facilities.
MSR-02	Probationers in jail. Weekly graph from March 20, 2009 to present, showing counts of probationers in local jails awaiting placement in probation detention centers, probation RSAT centers, and probation boot camps.
MSR-03	State inmates in jail. Weekly graph from March 20, 2009 to present, showing counts of state inmates in local jails awaiting placement in state prison facilities – including those who have not yet been assigned to a diagnostic center, those whose transportation has been delayed for some reason, and those who are ready to be picked up.
MSR-04	Female state inmates in jail. Weekly graph from March 20, 2009 to present, showing counts of female state inmates awaiting placement in a state prison for females.
MSR-05	52-week table: housed offenders. Data for each of the past 52 weeks, showing total prison inmates, parolees in revocation centers, probationers in RSAT/boot camp/detention centers, inmate jail backlog, probationers in jail waiting for facilities, with subtotals.
MSR-06	52-week table: state prisoners. Data for each of the past 52 weeks, showing inmates in state prisons, transition centers, county prisons, pre-release centers, private prisons, and inmate boot camps, with subtotals.
MSR-07	52-week table: waiting in jail. Data for each of the past 52 weeks, showing probationers waiting for detention centers, RSAT, and boot camp; and state prisoners not yet assigned to diagnostic centers, in admission process, with delayed transport, and ready for pickup, with subtotals.

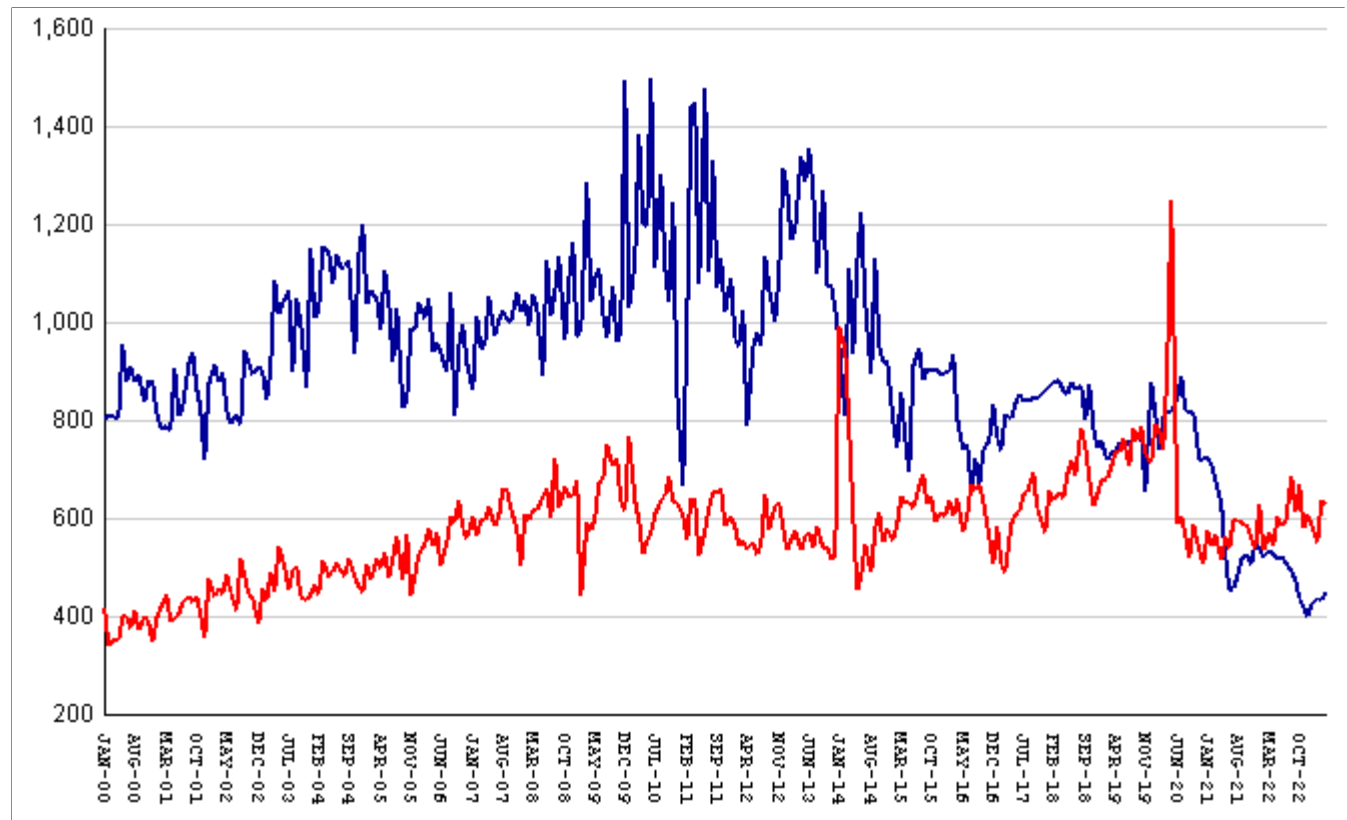
The DCA table consists mainly of data submitted from each of Georgia's 140+ local jails, via the Georgia Crime Information Center (GCIC) to the Georgia Department of Community Affairs (DCA), which publishes its [County Jail Inmate Population Report](#) on its web site each month. GDC has collected summary statewide data from this report every month since its inception in January, 1993. The table also contains the inmate jail backlog as computed by GDC for the last Friday of each month, for comparison with the jailers' count of state inmates. Although nominally a monthly table, DCA_RESRCH is updated weekly to insure that the DCA data is correctly synchronized with the GDC jail backlog data.

Page	Contents
DCA-01	Jail composition. Monthly graph from 1993 to the present shows trends in the numbers of unsentenced inmates, state inmates, county inmates, and other inmates.
DCA-02	Two views of jail backlog. Monthly graph from 1993 to present compares jailers' count of "state inmates" with GDC's count of the "inmate jail backlog", and explains that both are valid counts of different phenomena.
DCA-03	48-month table: local jails. Data from Georgia jailers for each of the past 48 months, showing total jail population, capacity, utilization, and number and percent of unsentenced inmates, state inmates, county inmates, and other inmates.

Releases by clemency and maxout, Jan-2000 to Apr-2023

There are two main ways of being released from a Georgia prison -- by actions of the Board of Pardons and Paroles ("Clemencies") and by service of 100% of the court-ordered sentences ("Maxouts"). "Clemency" includes paroles, reprieves, commutations, and transfer to other confinement prior to expiration of sentence.

"Other Releases" includes deaths, and sentences modified or overturned by the courts. Clemencies and maxouts may or may not be followed by periods of probation.



A. Clemency with probation to follow	RISES BY	13	from	375	to	388
B. Clemency only	RISES BY	3	from	57	to	60
C. Maxout with probation to follow	RISES BY	1	from	573	to	574
D. Maxout only (unsupervised)	falls by	10	from	63	to	53
E. Other releases	RISES BY	2	from	24	to	26
F. Total releases (A+B+C+D+E)	RISES BY	9	from	1092	to	1101
G. Total clemencies (A+B) (top line)	RISES BY	16	from	432	to	448
H. Total maxouts(C+D) (bottom line)	falls by	9	from	636	to	627
I. % of releases by clemency (G/F)	RISES BY	1.13%	from	39.56%	to	40.69%
J. % of releases by maxout (H/F)	falls by	1.29%	from	58.24%	to	56.95%
K. Supervised releases (A+B+C)	RISES BY	17	from	1005	to	1022
L. % unsupervised releases (D/F)	falls by	.96%	from	5.77%	to	4.81%
M. % supervised releases (K/F)	RISES BY	.79%	from	92.03%	to	92.82%

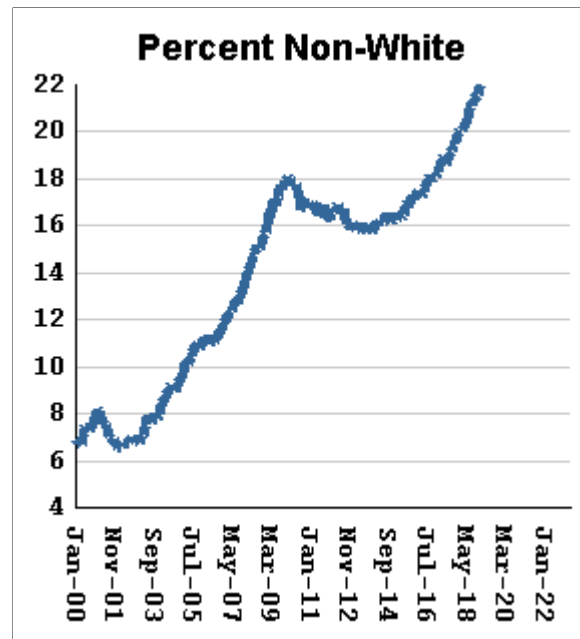
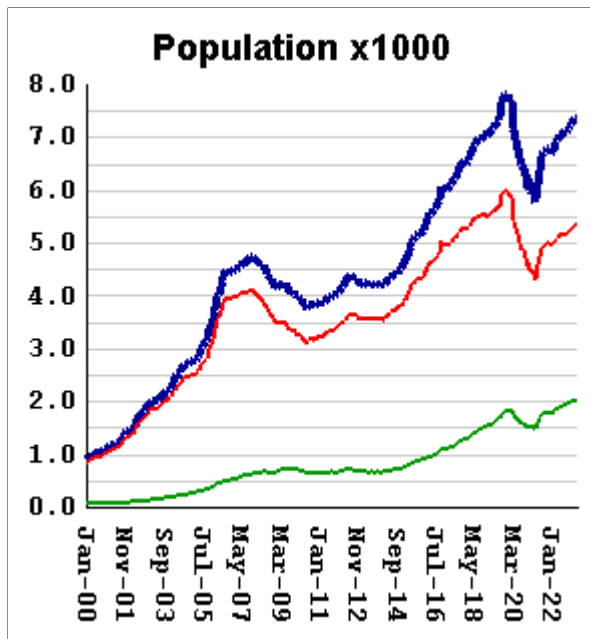
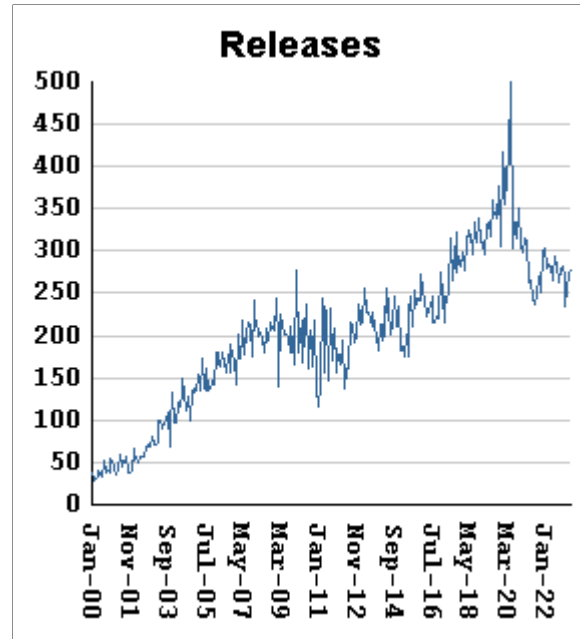
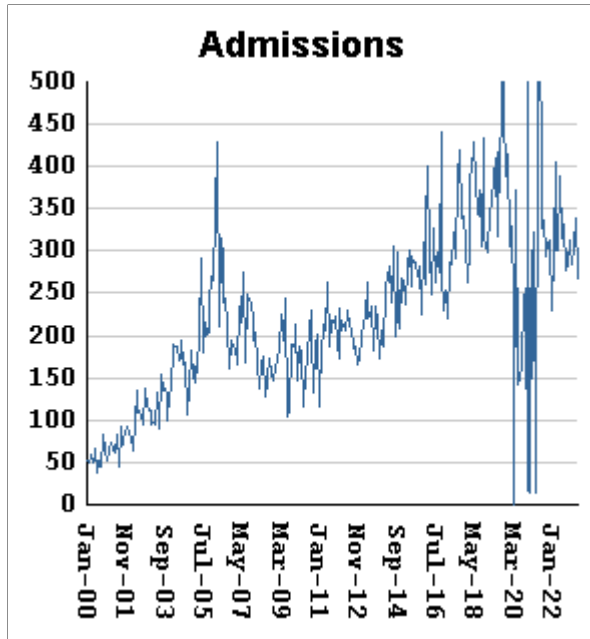
Monthly releases from prison by type of release, for the past 48 months

Month	A	B	C	D	E	F	G	H	I	J
	Clemency + Prob	Clemency Only	Maxout + Prob	Maxout Only	Other Rels	Total Releases (A+B+C+D+E)	Total Clemency (A+B)	Total Maxout (C+D)	Percent Clemency (G/F)	Percent Maxout (H/F)
May-19	639	116	650	84	18	1507	755	734	50.10%	48.71%
Jun-19	636	114	676	87	12	1525	750	763	49.18%	50.03%
Jul-19	635	122	635	72	15	1479	757	707	51.18%	47.80%
Aug-19	640	121	694	88	4	1547	761	782	49.19%	50.55%
Sep-19	624	146	663	98	18	1549	770	761	49.71%	49.13%
Oct-19	638	134	706	82	12	1572	772	788	49.11%	50.13%
Nov-19	575	80	640	90	16	1401	655	730	46.75%	52.11%
Dec-19	756	121	636	78	24	1615	877	714	54.30%	44.21%
Jan-20	713	102	710	80	24	1629	815	790	50.03%	48.50%
Feb-20	634	104	687	91	21	1537	738	778	48.02%	50.62%
Mar-20	674	136	658	82	22	1572	810	740	51.53%	47.07%
Apr-20	699	118	813	104	19	1753	817	917	46.61%	52.31%
May-20	677	139	1096	152	28	2092	816	1248	39.01%	59.66%
Jun-20	717	127	535	54	15	1448	844	589	58.29%	40.68%
Jul-20	738	151	557	47	28	1521	889	604	58.45%	39.71%
Aug-20	677	144	514	55	34	1424	821	569	57.65%	39.96%
Sep-20	686	131	451	66	33	1367	817	517	59.77%	37.82%
Oct-20	698	118	515	71	29	1431	816	586	57.02%	40.95%
Nov-20	605	112	484	49	21	1271	717	533	56.41%	41.94%
Dec-20	625	98	447	60	18	1248	723	507	57.93%	40.63%
Jan-21	635	91	517	57	21	1321	726	574	54.96%	43.45%
Feb-21	617	95	481	63	20	1276	712	544	55.80%	42.63%
Mar-21	574	103	496	70	16	1259	677	566	53.77%	44.96%
Apr-21	532	97	456	60	24	1169	629	516	53.81%	44.14%
May-21	446	77	509	54	21	1107	523	563	47.24%	50.86%
Jun-21	369	84	471	66	21	1011	453	537	44.81%	53.12%
Jul-21	391	66	533	64	19	1073	457	597	42.59%	55.64%
Aug-21	412	69	534	62	28	1105	481	596	43.53%	53.94%
Sep-21	447	72	524	66	32	1141	519	590	45.49%	51.71%
Oct-21	450	75	527	55	21	1128	525	582	46.54%	51.60%
Nov-21	423	82	493	65	18	1081	505	558	46.72%	51.62%
Dec-21	470	81	483	56	18	1108	551	539	49.73%	48.65%
Jan-22	463	77	551	76	26	1193	540	627	45.26%	52.56%
Feb-22	444	80	465	71	24	1084	524	536	48.34%	49.45%
Mar-22	463	70	517	54	16	1120	533	571	47.59%	50.98%
Apr-22	460	68	473	68	16	1085	528	541	48.66%	49.86%
May-22	443	76	543	62	26	1150	519	605	45.13%	52.61%
Jun-22	459	62	530	57	21	1129	521	587	46.15%	51.99%
Jul-22	445	65	531	58	14	1113	510	589	45.82%	52.92%
Aug-22	426	66	623	62	21	1198	492	685	41.07%	57.18%
Sep-22	401	74	552	59	18	1104	475	611	43.03%	55.34%
Oct-22	378	57	608	60	23	1126	435	668	38.63%	59.33%
Nov-22	366	53	524	54	19	1016	419	578	41.24%	56.89%
Dec-22	347	55	550	59	28	1039	402	609	38.69%	58.61%
Jan-23	373	53	528	58	23	1035	426	586	41.16%	56.62%
Feb-23	392	43	500	49	17	1001	435	549	43.46%	54.85%
Mar-23	375	57	573	63	24	1092	432	636	39.56%	58.24%
Apr-23	388	60	574	53	26	1101	448	627	40.69%	56.95%

Inmates with meth crimes, by month, Jan-2000 to Apr-2023

Methamphetamine is one of the most addictive drugs ever known. At first it induces intense euphoria, but with continued use causes severe depression and physical deterioration, including the dental catastrophe known as "meth mouth".

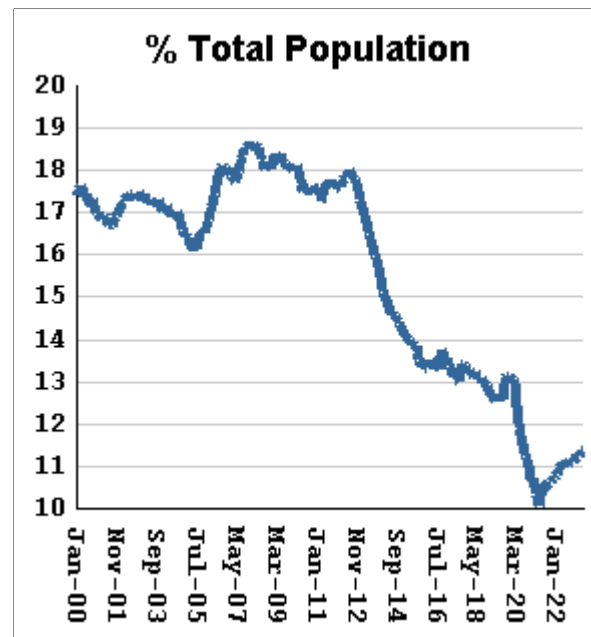
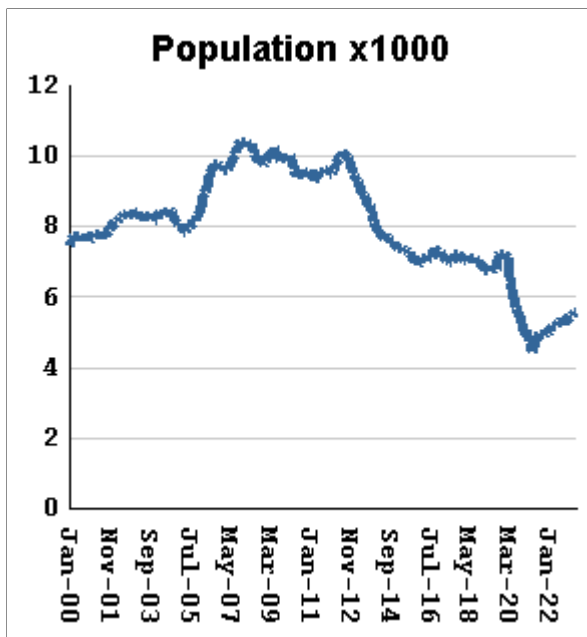
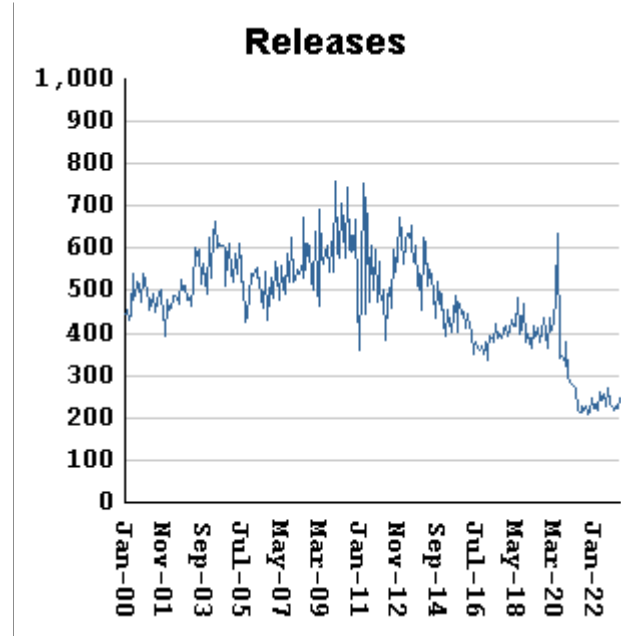
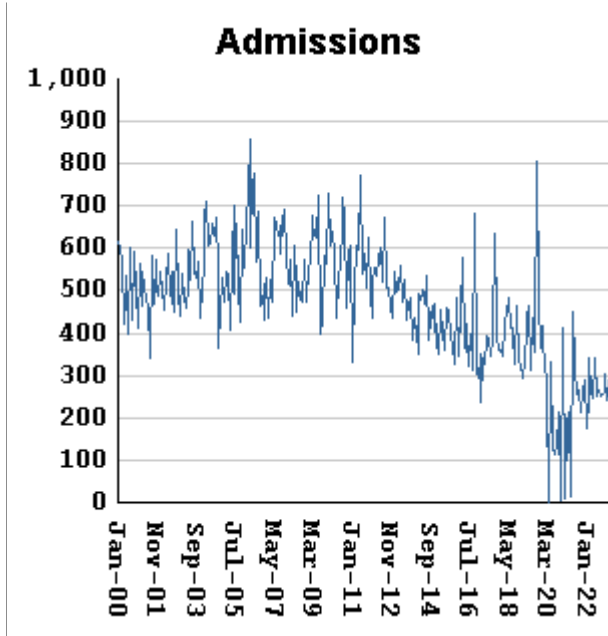
Georgia's meth epidemic peaked in 2007-2008, then declined, but is again growing. It started in the predominantly white northern counties, with blacks accounting for only about 5% of convictions. But black usage has expanded, and now accounts for about 15% of convictions.



Methamphetamine admissions	fall by	72	from	339	to	267
Methamphetamine releases	RISE BY	1	from	276	to	277
Methamphetamine population	falls by	10	from	7362	to	7352
Meth white population	RISES BY	1	from	5339	to	5340
Meth non-white population	falls by	11	from	2023	to	2012
Percent meth inmates who are non-white	falls by	.11 %	from	27.48%	to	27.37%

Non-violent first-incarcerants, by month, Jan-2000 to Apr-2023

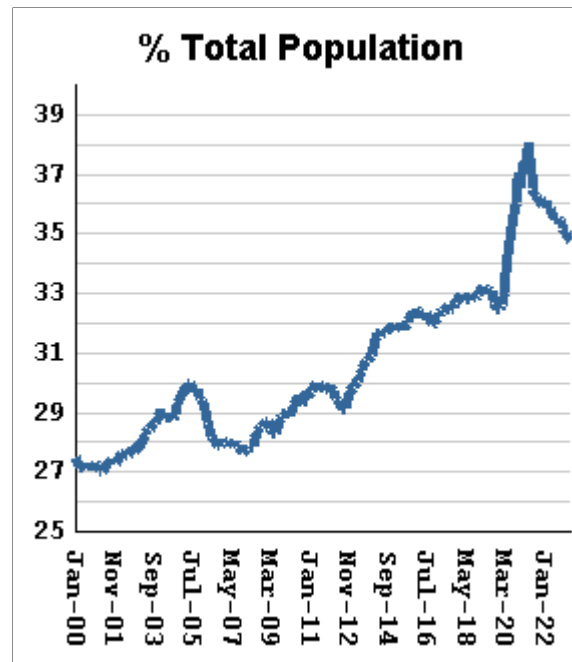
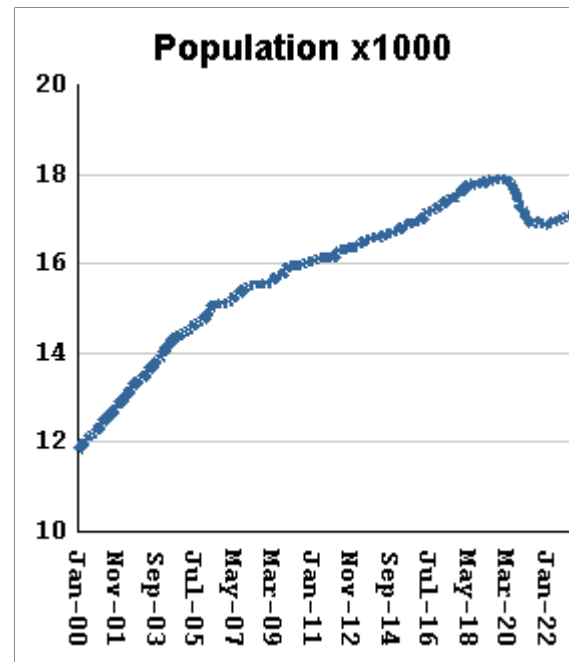
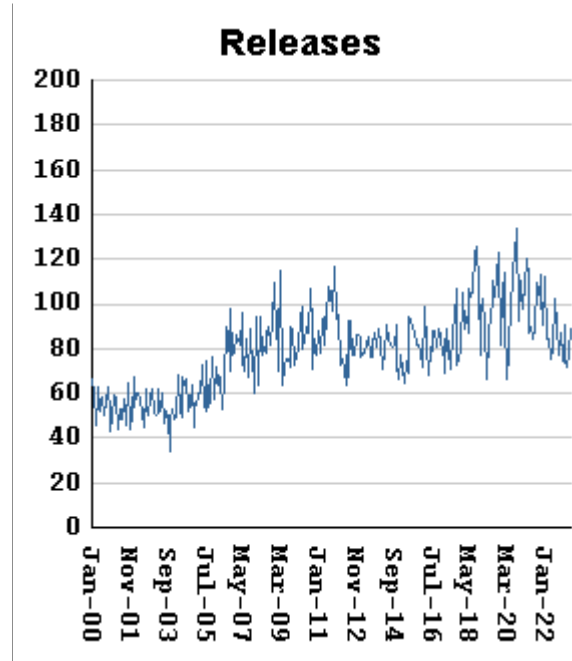
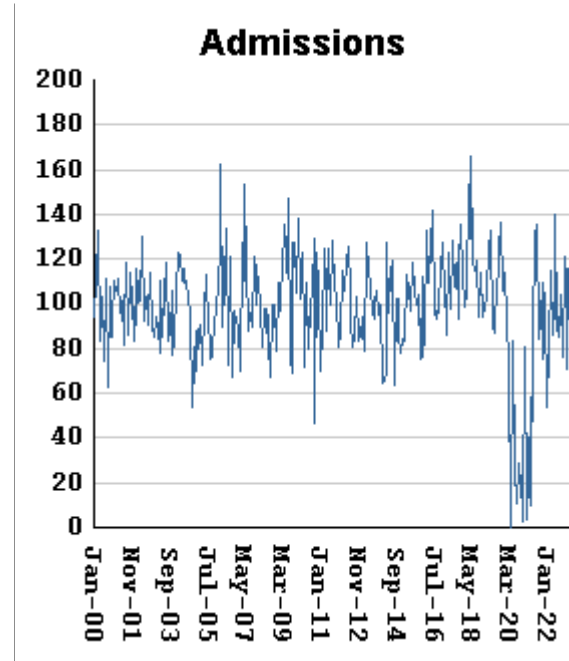
Historically, about one in six Georgia prison inmates has been a first-time incarcerant with a non-violent crime. In 2012 Georgia passed HB1176, which aimed to curb the growth of prison population by steering the least dangerous, least hardened offenders away from prison through pre-trial intervention, diversion, drug courts and treatment programs, and raising the dollar thresholds that define property felonies. The expectation is that over time, these measures will reduce the percentage of first-time non-violent incarcerants in prison.



Non-viol/1st-Incar admissions	fall by	66	from	321	to	255
Non-viol/1st-Incar releases	RISE BY	23	from	223	to	246
Non-viol/1st-Incar population	RISES BY	9	from	5583	to	5592
Non-viol/1st-Incar % of total population	RISES BY	.01 %	from	11.36%	to	11.37%

"Seven Deadly Sins" by month, Jan-2000 to Apr-2023

Tough legislation in 1995 imposed mandatory ten-year minimum terms for kidnapping, armed robbery, rape, aggravated sodomy, aggravated sexual battery, and aggravated child molestation, and a minimum of 25 years for murder. A second conviction resulted in life without parole. As predicted, longer prison terms caused population to climb steeply for about a decade. It then began to level off, as releases started catching up with admissions. The 2008 dip in percentage of total population (bottom right) was caused by the surge of methamphetamine convictions (Page MO-03). Note: these graphs include inmates convicted before 1995.



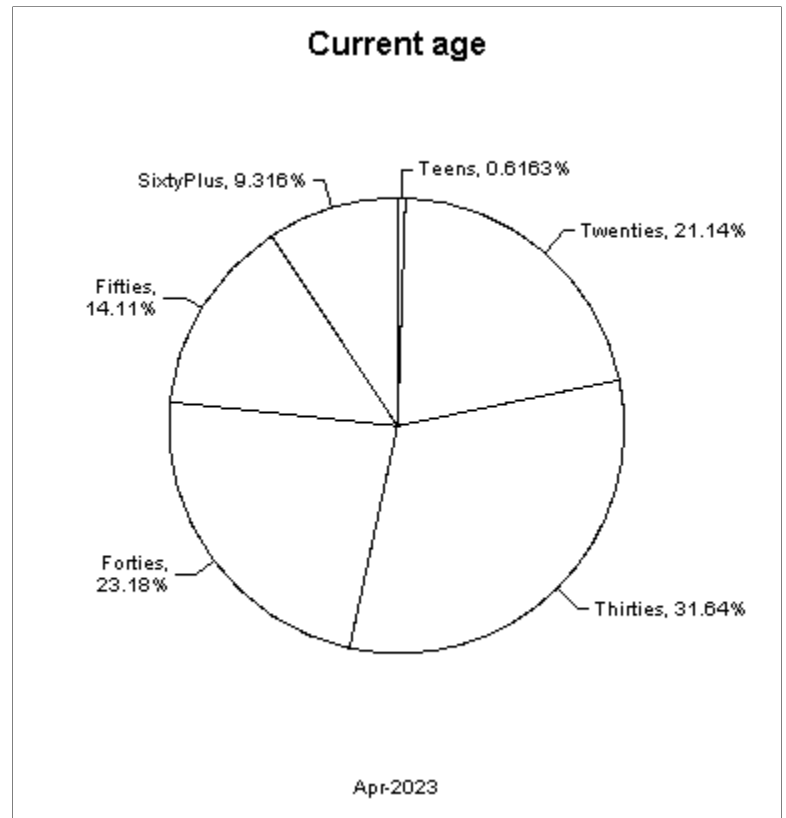
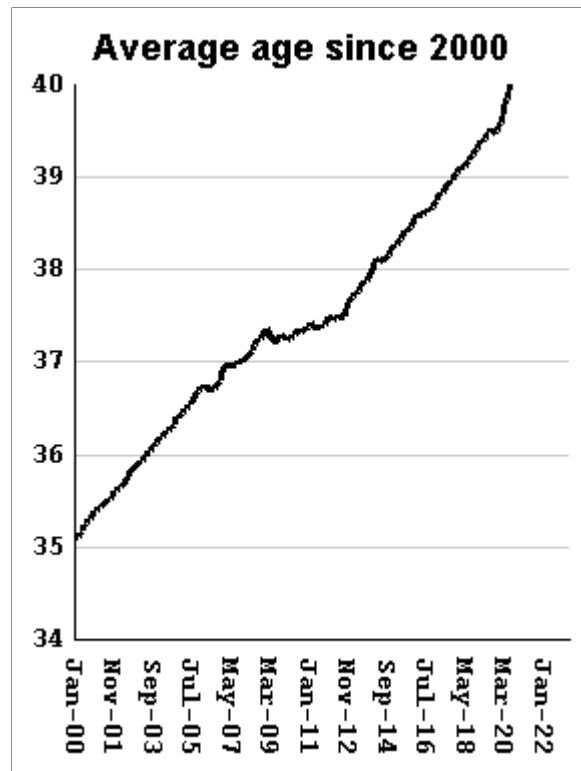
"Seven Deadly Sin" admissions	fall by	18	from	96	to	78
"Seven Deadly Sin" releases	RISE BY	10	from	79	to	89
"Seven Deadly Sin" population	falls by	11	from	17105	to	17094
"Seven Deadly Sin" % of total population	falls by	.02 %	from	34.79%	to	34.77%

Inmate subpopulation counts and percentages, for the past 48 months

Month	Methamphetamine						1st Incar Non-Violent		Seven Deadly Sins	
	Total Number	Total Percent	White Number	White Percent	Non White Number	Non White Percent	Number	Percent	Number	Percent
May-19	7265	13.44%	5653	77.81%	1624	22.35%	6876	12.72%	17893	33.09%
Jun-19	7223	13.40%	5599	77.52%	1641	22.72%	6779	12.58%	17880	33.17%
Jul-19	7295	13.51%	5671	77.74%	1670	22.89%	6836	12.66%	17869	33.08%
Aug-19	7318	13.56%	5647	77.17%	1681	22.97%	6787	12.57%	17866	33.09%
Sep-19	7642	13.96%	5931	77.61%	1748	22.87%	7159	13.07%	17877	32.65%
Oct-19	7731	14.04%	5950	76.96%	1789	23.14%	7235	13.14%	17890	32.49%
Nov-19	7814	14.16%	6003	76.82%	1818	23.27%	7237	13.12%	17914	32.47%
Dec-19	7811	14.15%	5986	76.64%	1831	23.44%	7222	13.09%	17921	32.47%
Jan-20	7738	14.07%	5933	76.67%	1810	23.39%	7167	13.03%	17899	32.54%
Feb-20	7712	14.06%	5881	76.26%	1836	23.81%	7105	12.95%	17896	32.63%
Mar-20	7563	13.94%	5764	76.21%	1803	23.84%	6938	12.79%	17906	33.01%
Apr-20	7150	13.62%	5423	75.85%	1731	24.21%	6452	12.29%	17827	33.96%
May-20	6983	13.49%	5295	75.83%	1692	24.23%	6151	11.88%	17809	34.41%
Jun-20	6822	13.42%	5233	76.71%	1671	24.49%	5930	11.67%	17725	34.87%
Jul-20	6639	13.34%	5018	75.58%	1625	24.48%	5700	11.45%	17609	35.38%
Aug-20	6490	13.25%	4895	75.42%	1598	24.62%	5498	11.23%	17522	35.78%
Sep-20	6412	13.26%	4905	76.50%	1579	24.63%	5377	11.12%	17412	36.02%
Oct-20	6316	13.24%	4771	75.54%	1548	24.51%	5214	10.93%	17342	36.36%
Nov-20	6030	12.97%	4532	75.16%	1500	24.88%	4928	10.60%	17235	37.07%
Dec-20	6278	13.30%	4708	74.99%	1572	25.04%	5058	10.71%	17218	36.47%
Jan-21	5977	13.01%	4481	74.97%	1498	25.06%	4789	10.43%	17113	37.26%
Feb-21	5948	13.09%	4475	75.24%	1524	25.62%	4704	10.35%	17016	37.44%
Mar-21	6007	13.23%	4465	74.33%	1544	25.70%	4651	10.25%	16963	37.37%
Apr-21	5751	12.97%	4267	74.20%	1486	25.84%	4446	10.03%	16886	38.08%
May-21	6083	13.47%	4563	75.01%	1585	26.06%	4686	10.38%	16881	37.38%
Jun-21	6344	13.82%	4706	74.18%	1672	26.36%	4805	10.47%	16928	36.87%
Jul-21	6561	14.11%	4845	73.85%	1718	26.19%	4892	10.52%	16974	36.50%
Aug-21	6637	14.23%	4902	73.86%	1746	26.31%	4928	10.56%	16949	36.33%
Sep-21	6705	14.34%	4943	73.72%	1764	26.31%	4965	10.62%	16946	36.23%
Oct-21	6724	14.37%	4957	73.72%	1769	26.31%	4968	10.62%	16908	36.13%
Nov-21	6783	14.46%	5011	73.88%	1783	26.29%	5024	10.71%	16914	36.05%
Dec-21	6795	14.44%	5018	73.85%	1779	26.18%	5069	10.77%	16924	35.97%
Jan-22	6721	14.39%	4971	73.96%	1778	26.45%	5021	10.75%	16866	36.12%
Feb-22	6743	14.43%	4994	74.06%	1799	26.68%	5045	10.80%	16863	36.08%
Mar-22	6864	14.57%	5030	73.28%	1835	26.73%	5157	10.94%	16894	35.85%
Apr-22	6886	14.59%	5045	73.26%	1842	26.75%	5201	11.02%	16905	35.82%
May-22	6922	14.65%	5070	73.24%	1870	27.02%	5188	10.98%	16924	35.82%
Jun-22	7036	14.75%	5141	73.07%	1898	26.98%	5285	11.08%	16984	35.62%
Jul-22	7057	14.76%	5147	72.93%	1911	27.08%	5280	11.04%	16971	35.50%
Aug-22	7106	14.86%	5197	73.14%	1931	27.17%	5319	11.12%	16965	35.47%
Sep-22	7122	14.86%	5172	72.62%	1950	27.38%	5302	11.07%	16992	35.47%
Oct-22	7129	14.88%	5192	72.83%	1961	27.51%	5325	11.11%	16981	35.44%
Nov-22	7161	14.85%	5236	73.12%	1962	27.40%	5358	11.11%	17028	35.32%
Dec-22	7198	14.83%	5235	72.73%	1963	27.27%	5431	11.19%	17047	35.13%
Jan-23	7248	14.90%	5267	72.67%	1995	27.52%	5455	11.21%	17044	35.04%
Feb-23	7299	14.94%	5297	72.57%	2016	27.62%	5485	11.23%	17088	34.99%
Mar-23	7362	14.97%	5339	72.52%	2023	27.48%	5583	11.36%	17105	34.79%
Apr-23	7352	14.95%	5340	72.63%	2012	27.37%	5592	11.37%	17094	34.77%

Overview of inmate age statistics, Jan-2000 to Apr-2023

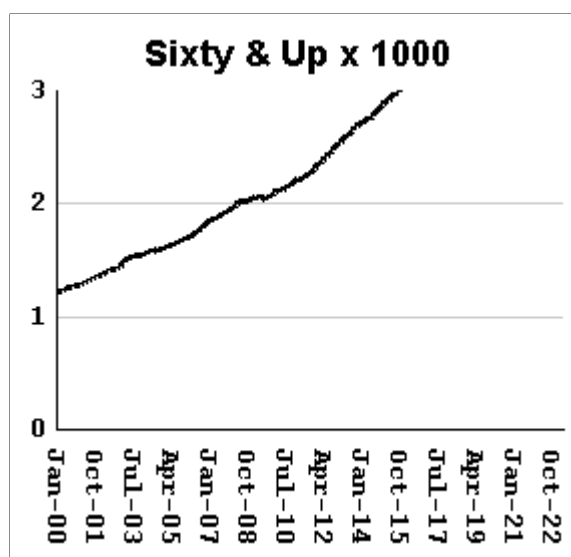
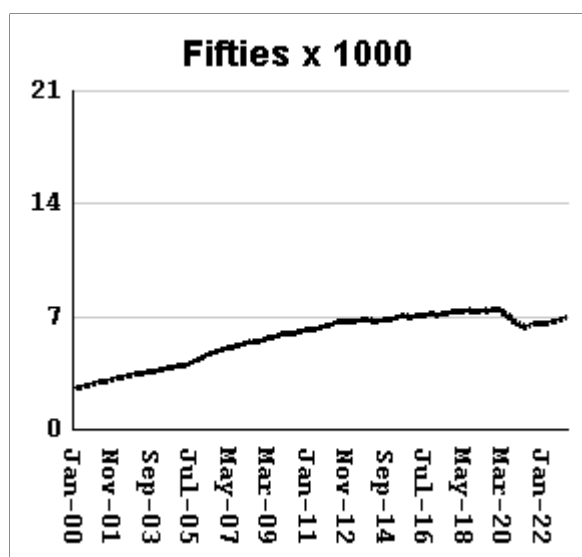
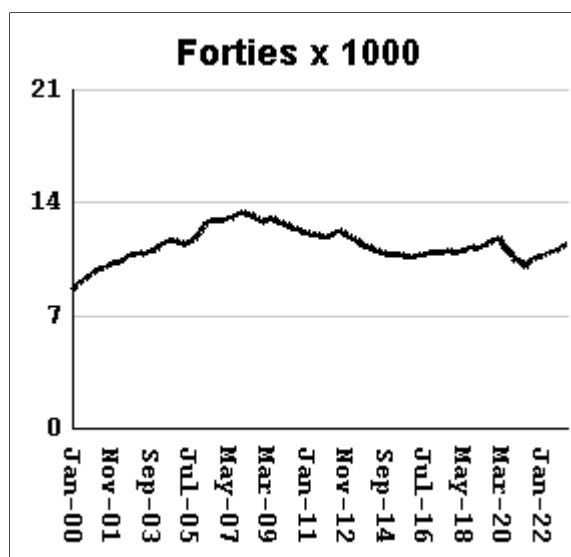
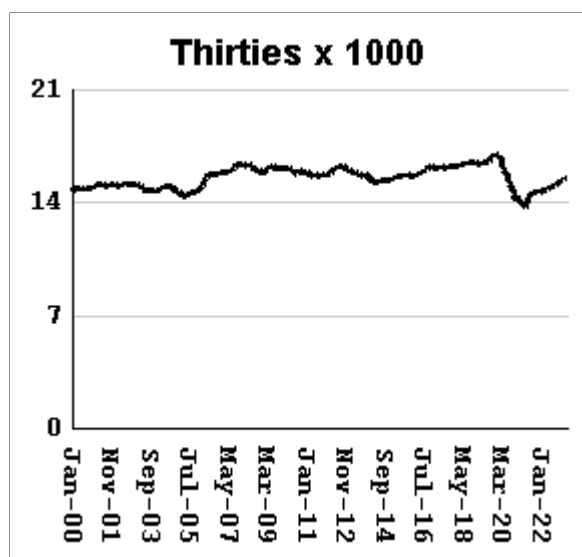
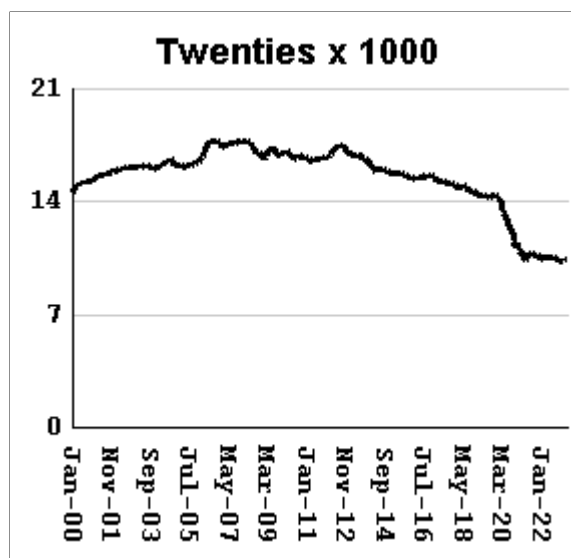
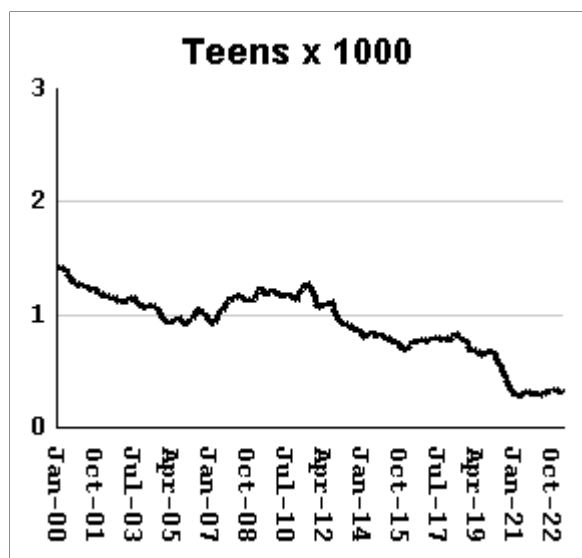
The "aging inmate population" is a concern in correctional systems throughout America, including Georgia. Here, the increase in inmate age is the result of several factors. Teenagers have been steered away from prison by increased usage of probation and other alternatives, at least for their first convictions. And there has been a surge of middle-aged male sex offenders due to the expanding "It's OK to tell" ethos. But most importantly, more severe sentence lengths and release policies have greatly increased the length of time that most offenders -- especially violent ones -- spend in prison, thereby increasing their average age.



Average age of active inmates	RISES BY	.03	from	41.08	to	41.11
Number in their teens	falls by	12	from	315	to	303
Percentage in their teens	falls by	.02%	from	.64%	to	0.62%
Number in their twenties	falls by	7	from	10,402	to	10,395
Percentage in their twenties	falls by	0.02%	from	21.16%	to	21.14%
Number in their thirties	RISES BY	1	from	15,556	to	15,557
Percentage in their thirties	falls by	0.00%	...	31.64%	at	31.64%
Number in their forties	RISES BY	10	from	11,384	to	11,394
Percentage in their forties	RISES BY	0.02%	from	23.16%	to	23.18%
Number in their fifties	RISES BY	3	from	6932	to	6,935
Percentage in their fifties	RISES BY	0.01%	from	14.10%	to	14.11%
Number age sixty and up	RISES BY	8	from	4572	to	4,580
Percentage age sixty and up	RISES BY	.02%	from	9.3%	to	9.32%

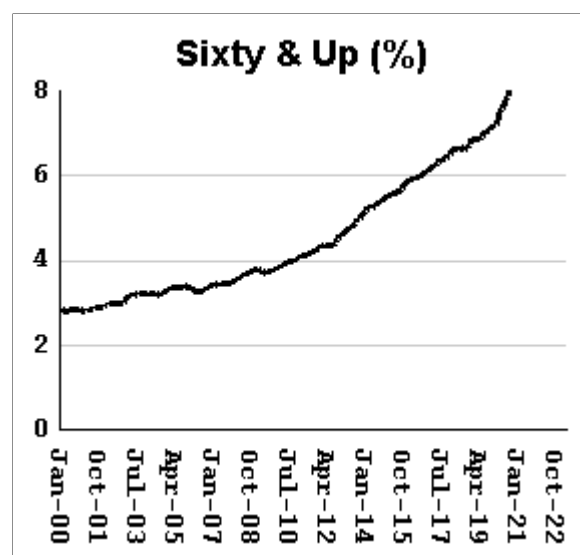
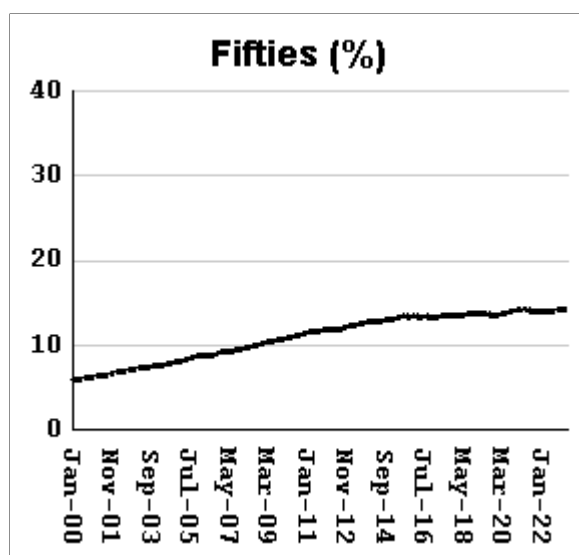
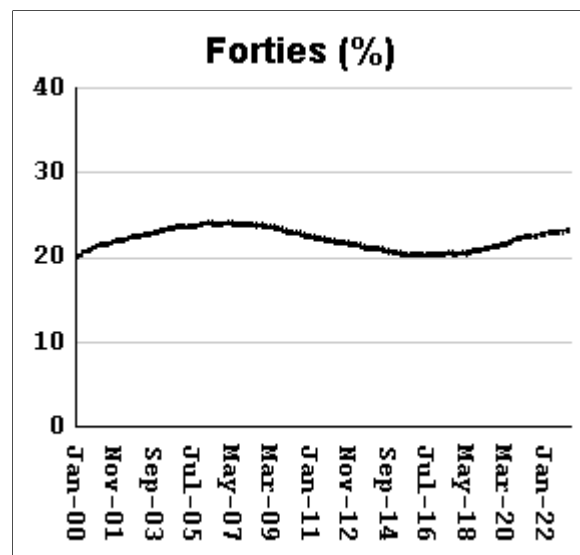
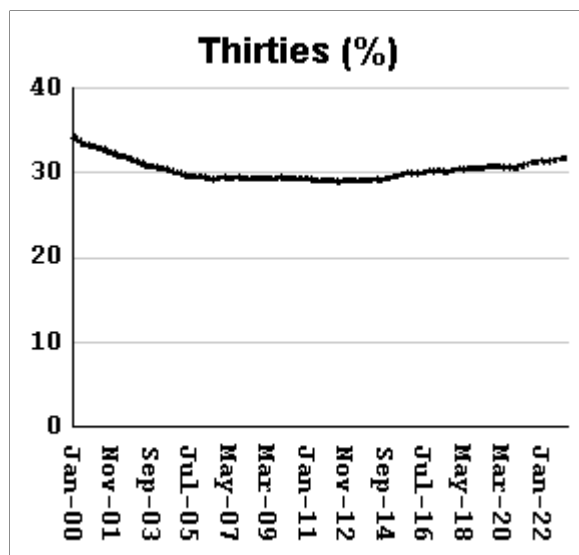
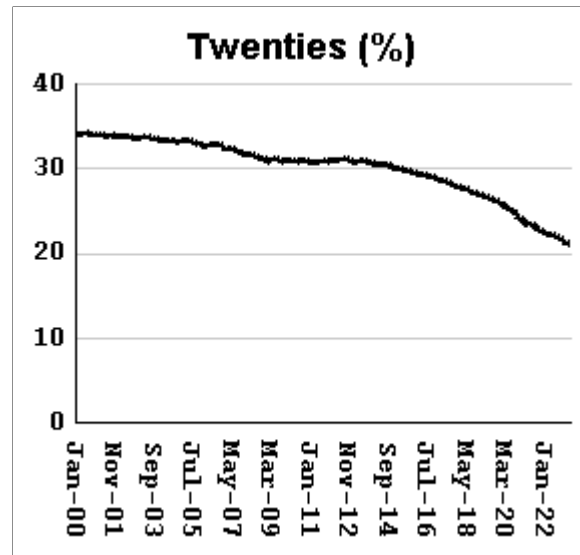
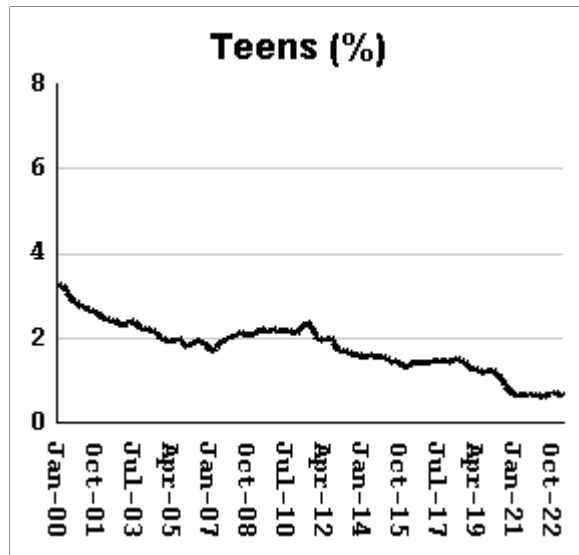
Monthly counts of inmates by age group, Jan-2000 to Apr-2023

Y-axis of Twenties/Thirties/Forties/Fifties runs from 0 to 21,000. Y-axis of Teens/Sixty+ runs from 0 to 3,000.



Monthly percentages of inmates by age group, Jan-2000 to Apr-2023

Y-axis of Twenties/Thirties/Forties/Fifties runs from 0% to 40%. Y-axis of Teens/Sixty+ runs from 0% to 8%

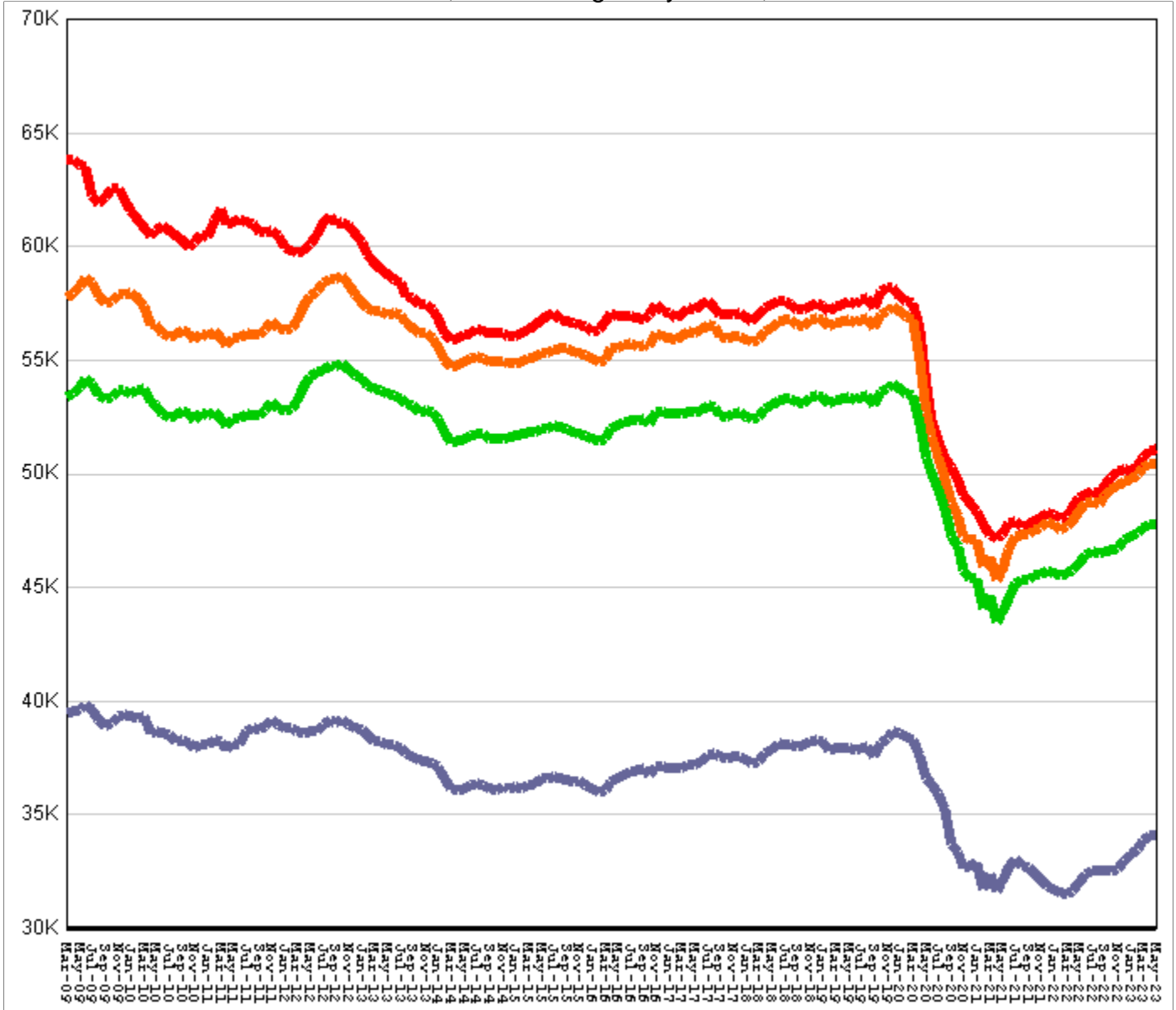


Inmate counts & percentages by age, for past 48 months

Month	Avg Age	Teens		Twenties		Thirties		Forties		Fifties		Sixty & Up	
		Num-ber	Per-cent	Num-ber	Per-cent	Num-ber	Per-cent	Num-ber	Per-cent	Num-ber	Per-cent	Num-ber	Per-cent
May-19	39.42	678	1.25%	14407	26.65%	16534	30.58%	11365	21.02%	7402	13.69%	3711	6.86%
Jun-19	39.48	655	1.22%	14287	26.51%	16509	30.63%	11386	21.12%	7380	13.69%	3732	6.92%
Jul-19	39.48	646	1.20%	14363	26.59%	16585	30.71%	11429	21.16%	7375	13.65%	3784	7.01%
Aug-19	39.52	640	1.19%	14212	26.33%	16558	30.67%	11445	21.20%	7339	13.59%	3814	7.07%
Sep-19	39.48	657	1.20%	14432	26.36%	16895	30.86%	11660	21.29%	7413	13.54%	3870	7.07%
Oct-19	39.47	672	1.22%	14449	26.24%	16954	30.79%	11695	21.24%	7440	13.51%	3882	7.05%
Nov-19	39.51	667	1.21%	14403	26.11%	16987	30.79%	11737	21.27%	7473	13.55%	3918	7.10%
Dec-19	39.54	683	1.24%	14328	25.96%	16957	30.73%	11804	21.39%	7486	13.57%	3940	7.14%
Jan-20	39.57	679	1.23%	14216	25.84%	16917	30.75%	11826	21.50%	7437	13.52%	3950	7.18%
Feb-20	39.6	666	1.21%	14159	25.81%	16886	30.79%	11748	21.42%	7449	13.58%	3955	7.21%
Mar-20	39.67	642	1.18%	13927	25.68%	16677	30.75%	11629	21.44%	7405	13.65%	3974	7.33%
Apr-20	39.82	578	1.10%	13348	25.43%	16087	30.65%	11311	21.55%	7222	13.76%	3957	7.54%
May-20	39.86	563	1.09%	13115	25.34%	15849	30.62%	11202	21.64%	7124	13.76%	3922	7.58%
Jun-20	39.92	535	1.05%	12838	25.25%	15645	30.78%	11099	21.83%	7032	13.83%	3907	7.69%
Jul-20	40.05	481	0.97%	12402	24.92%	15201	30.54%	10897	21.90%	6924	13.91%	3875	7.79%
Aug-20	40.13	441	0.90%	12140	24.79%	14921	30.47%	10781	22.02%	6835	13.96%	3858	7.88%
Sep-20	40.19	418	0.86%	11931	24.68%	14819	30.66%	10718	22.17%	6792	14.05%	3867	8.00%
Oct-20	40.27	390	0.82%	11617	24.36%	14560	30.53%	10579	22.18%	6705	14.06%	3853	8.08%
Nov-20	40.4	352	0.76%	11181	24.05%	14199	30.54%	10353	22.27%	6575	14.14%	3843	8.27%
Dec-20	40.36	340	0.72%	11379	24.10%	14456	30.62%	10512	22.26%	6635	14.05%	3899	8.26%
Jan-21	40.48	304	0.66%	10955	23.85%	14067	30.62%	10265	22.35%	6472	14.09%	3878	8.44%
Feb-21	40.52	291	0.64%	10800	23.76%	14079	30.98%	10263	22.58%	6427	14.14%	3863	8.50%
Mar-21	40.55	296	0.65%	10673	23.51%	14007	30.86%	10173	22.41%	6376	14.05%	3877	8.54%
Apr-21	40.68	272	0.61%	10322	23.28%	13648	30.78%	9962	22.47%	6284	14.17%	3860	8.71%
May-21	40.61	290	0.64%	10590	23.45%	14026	31.06%	10174	22.53%	6376	14.12%	3913	8.67%
Jun-21	40.58	306	0.67%	10784	23.49%	14251	31.04%	10280	22.39%	6454	14.06%	3969	8.65%
Jul-21	40.57	315	0.68%	10860	23.35%	14436	31.05%	10384	22.33%	6498	13.97%	4012	8.63%
Aug-21	40.59	316	0.68%	10805	23.16%	14535	31.16%	10472	22.45%	6517	13.97%	4035	8.65%
Sep-21	40.63	315	0.67%	10746	22.97%	14605	31.23%	10496	22.44%	6526	13.95%	4090	8.74%
Oct-21	40.67	297	0.63%	10647	22.75%	14657	31.32%	10575	22.60%	6530	13.95%	4100	8.76%
Nov-21	40.68	298	0.64%	10633	22.66%	14714	31.36%	10653	22.71%	6537	13.93%	4117	8.78%
Dec-21	40.71	302	0.64%	10604	22.54%	14742	31.33%	10691	22.72%	6570	13.96%	4145	8.81%
Jan-22	40.77	293	0.63%	10483	22.45%	14648	31.37%	10644	22.80%	6575	14.08%	4152	8.89%
Feb-22	40.78	298	0.64%	10484	22.43%	14686	31.42%	10671	22.83%	6574	14.07%	4172	8.93%
Mar-22	40.78	295	0.63%	10533	22.35%	14778	31.36%	10733	22.78%	6586	13.98%	4201	8.92%
Apr-22	40.81	285	0.60%	10526	22.30%	14771	31.30%	10789	22.86%	6607	14.00%	4217	8.94%
May-22	40.85	281	0.59%	10510	22.24%	14822	31.37%	10822	22.90%	6608	13.99%	4253	9.00%
Jun-22	40.83	306	0.64%	10597	22.22%	14938	31.33%	10932	22.92%	6638	13.92%	4280	8.98%
Jul-22	40.88	314	0.66%	10553	22.07%	14981	31.34%	10974	22.95%	6680	13.97%	4307	9.01%
Aug-22	40.91	316	0.66%	10522	22.00%	15027	31.42%	11016	23.03%	6716	14.04%	4349	9.09%
Sep-22	40.96	313	0.65%	10440	21.79%	15047	31.41%	10987	22.93%	6743	14.07%	4382	9.15%
Oct-22	40.98	320	0.67%	10381	21.66%	15132	31.58%	11041	23.04%	6758	14.10%	4399	9.18%
Nov-22	40.99	331	0.69%	10405	21.58%	15237	31.61%	11143	23.11%	6806	14.12%	4443	9.22%
Dec-22	41.02	337	0.69%	10369	21.37%	15319	31.57%	11166	23.01%	6859	14.13%	4476	9.22%
Jan-23	41.05	325	0.67%	10347	21.27%	15400	31.66%	11204	23.03%	6879	14.14%	4519	9.29%
Feb-23	41.08	314	0.64%	10349	21.19%	15467	31.67%	11295	23.13%	6883	14.09%	4571	9.36%
Mar-23	41.08	315	0.64%	10402	21.16%	15556	31.64%	11384	23.16%	6932	14.10%	4572	9.30%
Apr-23	41.11	303	0.62%	10395	21.14%	15557	31.64%	11394	23.18%	6935	14.11%	4580	9.32%

All housed offenders under GDC jurisdiction

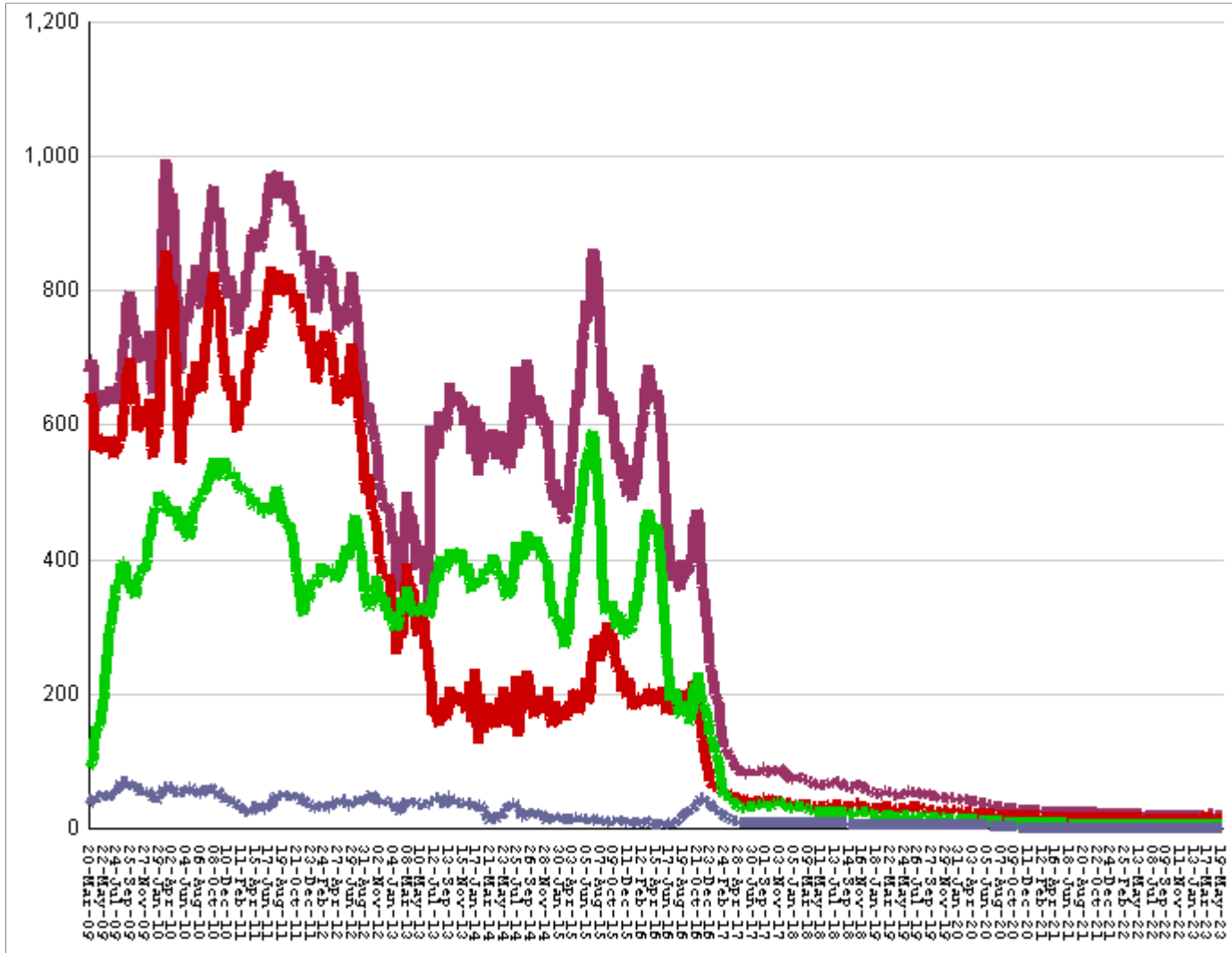
March 20, 2009 through May 26, 2023



All in bed + probs in jail + backlog	fall by	49	from	51,175	to	51,126
Probationers in jail	19	at	19
Inmate jail backlog	RISES BY	74	from	643	to	717
All in beds: inmate + Prob + parole	fall by	123	from	50,513	to	50,390
Total probationers in beds	fall by	59	from	2,709	to	2,650
Probation detention centers	fall by	6	from	1,108	to	1,102
Probation boot camps	fall by		from		to	
Probation RSAT	fall by	53	from	1601	to	1,548
Parole revocation centers	fall by		from		to	
All in inmate beds: state + other	fall by	64	from	47,804	to	47,740
Other inmate facilities :	fall by	50	from	13,677	to	13,627
Inmate boot camps	1	at	1
Private prisons	RISE BY	1	from	6888	to	6,889
County prisons	fall by	49	from	4555	to	4,506
Transitional centers	fall by	2	from	2233	to	2,231
In state prisons only	fall by	14	from	34,127	to	34,113

Probationers in jail awaiting placement in facilities

March 20, 2009 through May 26, 2023



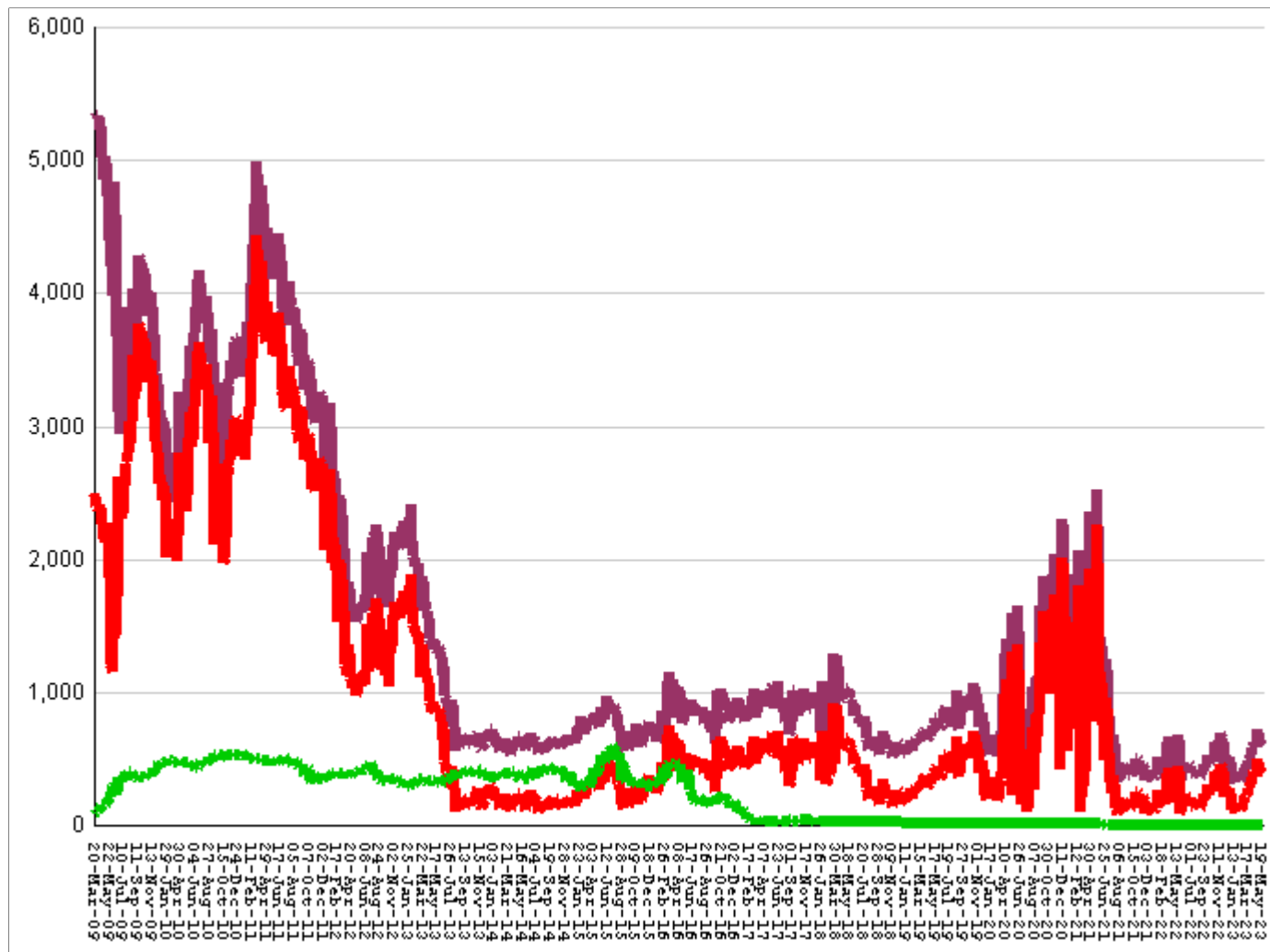
This graph shows, for each Friday since March 20 2009, the number of sentenced felony probationers who were waiting in jail for placement in facilities that GDC operates for housing probationers -- detention centers, probation residential substance abuse treatment (RSAT) centers, and probation boot camps. Counts include both those offenders sentenced directly from court, and those whose street probation was revoked.

Total probationers waiting in jail	level	at	19
... waiting for detention centers	level	at	14
... waiting for probation RSAT	level	at	4
... waiting for probation boot camps	level	at	1

The highest number of probationers waiting in jail was	994	on	05-MAR-10
... highest number waiting for detention centers was	859	on	05-MAR-10
... highest number waiting for probation RSAT was	592	on	10-JUL-15
... highest number waiting for probation boot camps was	70	on	18-SEP-09

State inmates in jail awaiting placement in facilities

March 20, 2009 through May 26, 2023



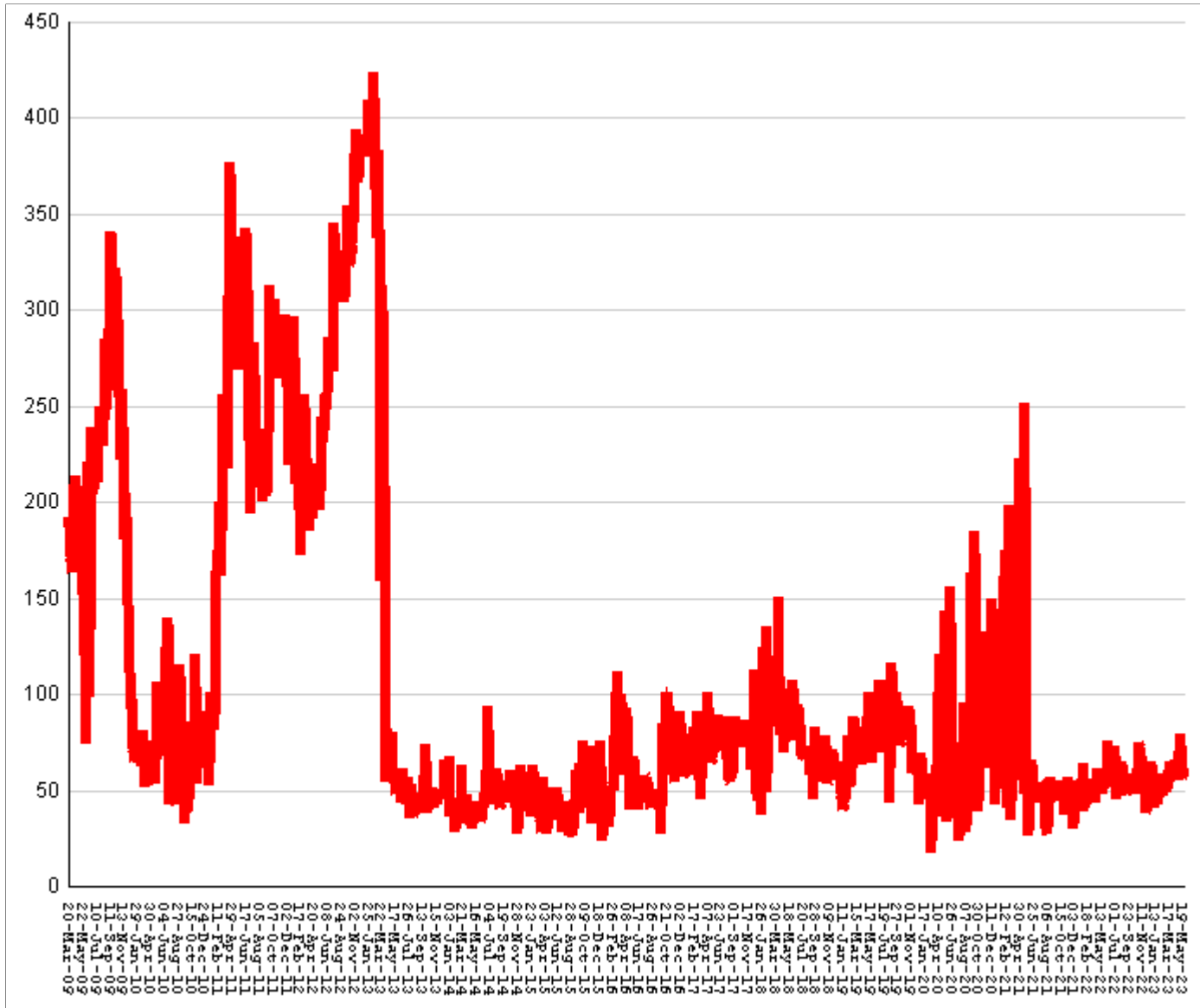
This graph shows, for each Friday since March 2009, the number of prisoners, probationers, and parolees in local jails who have been sentenced or revoked to state prison and whose documents have been received and verified by GDC. Most are almost immediately assigned to a diagnostic center, and are designated as in "admission processing". Of those a few hundred may be in the "transportation delayed" category because there is no room in the assigned diagnostic center, or because the inmate is being held for medical reasons, or for other court proceedings, or other reasons. Those remaining are "ready to be picked up".

Total state inmates waiting in jail	RISE BY	74	from	643	to	717
... not yet assigned to a diagnostic center	RISE BY	1	from	27	to	28
... total "in admission processing"	RISE BY	73	from	616	to	689
... with "transportation delayed"	RISE BY	3	from	190	to	193
... ready to be picked up	RISE BY	70	from	426	to	496

The highest number of state inmates waiting in jail was	5338	on	27-MAR-09
... highest number not asg to a diagnostic center was	2881	on	12-JUN-09
... highest number in admission processing was	4916	on	25-MAR-11
... highest number with transportation delayed was	645	on	14-JAN-11
... highest number ready to be pickup was	4435	on	25-MAR-11

Female state inmates in jail awaiting pickup

March 20, 2009 through May 26, 2023



This graph shows, for each Friday since March 2009, the number of female state prisoners in local jails who were assigned to diagnostic centers but had not yet been picked up.

Female state inmates in jails waiting picked up	RISE BY	12	from	56	to	68
The highest number of female inmates waiting in jail was		424	on	01-FEB-13		
The lowest number of female inmates waiting in jail was		17	on	20-MAR-20		

Summary of housed prisoners, parolees, and probationers

Week ending	Prison	Parole	Probation			Prison+parole+probation	Jail		Total
	Total inmates	Revocation centers	Prob RSAT	Boot camp	Detention		Inmate backlog	Probationers	Prison+parole+probation+jail
03-Jun-2022	46376		1289		1031	48696	406	20	49122
10-Jun-2022	46443		1288		978	48709	325	19	49053
17-Jun-2022	46435		1273		980	48688	404	20	49112
24-Jun-2022	46491		1312		928	48731	383	19	49133
27-Jun-2022	46411		1303		888	48602	471	19	49092
01-Jul-2022	46607		1272		968	48847	439	19	49305
08-Jul-2022	46565		1236		928	48729	406	19	49154
15-Jul-2022	46536		1222		896	48654	384	18	49056
22-Jul-2022	46571		1264		912	48747	455	18	49220
29-Jul-2022	46638		1259		932	48829	385	18	49232
05-Aug-2022	46522		1234		933	48689	380	18	49087
12-Aug-2022	46476		1257		893	48626	359	18	49003
19-Aug-2022	46444		1278		865	48587	383	18	48988
26-Aug-2022	46502		1355		888	48745	418	18	49181
02-Sep-2022	46519		1349		897	48765	469	18	49252
09-Sep-2022	46432		1418		985	48835	439	18	49292
16-Sep-2022	46557		1472		1017	49046	400	18	49464
23-Sep-2022	46540		1536		1037	49113	457	18	49588
30-Sep-2022	46617		1468		1075	49160	533	18	49711
07-Oct-2022	46650		1515		1096	49261	468	18	49747
14-Oct-2022	46618		1546		1048	49212	471	18	49701
21-Oct-2022	46627		1577		1027	49231	482	18	49731
28-Oct-2022	46634		1635		1105	49374	629	18	50021
04-Nov-2022	46603		1631		1153	49387	623	18	50028
11-Nov-2022	46673		1597		1117	49387	626	18	50031
18-Nov-2022	46751		1616		1087	49454	658	18	50130
25-Nov-2022	46825		1605		1089	49519	688	18	50225
02-Dec-2022	46925		1604		1060	49589	537	18	50144
09-Dec-2022	46898		1530		1058	49486	507	18	50011
16-Dec-2022	46957		1582		1071	49610	506	18	50134
23-Dec-2022	47168		1557		1063	49788	481	18	50287
30-Dec-2022	47266		1547		1002	49815	447	18	50280
06-Jan-2023	47175		1538		973	49686	342	18	50046
13-Jan-2023	47229		1580		976	49785	355	18	50158
20-Jan-2023	47219		1568		1029	49816	354	18	50188
27-Jan-2023	47244		1556		981	49781	321	18	50120
03-Feb-2023	47232		1558		1022	49812	374	18	50204
10-Feb-2023	47232		1554		1022	49808	338	18	50164
17-Feb-2023	47419		1534		1048	50001	395	19	50415
24-Feb-2023	47485		1535		1086	50106	380	19	50505
03-Mar-2023	47519		1524		1114	50157	443	19	50619
10-Mar-2023	47533		1505		1081	50119	432	20	50571
17-Mar-2023	47598		1557		1101	50256	433	19	50708
24-Mar-2023	47637		1598		1048	50283	484	20	50787
31-Mar-2023	47798		1572		1091	50461	518	20	50999
07-Apr-2023	47709		1551		1111	50371	584	20	50975
14-Apr-2023	47660		1573		1093	50326	579	20	50925
21-Apr-2023	47659		1577		1079	50315	610	19	50944
28-Apr-2023	47834		1584		1086	50504	599	19	51122
05-May-2023	47780		1531		1092	50403	628	19	51050
12-May-2023	47668		1568		1114	50350	657	19	51026
19-May-2023	47804		1601		1108	50513	643	19	51175
26-May-2023	47740		1548		1102	50390	717	19	51126

Offenders housed in facilities for state prisoners

Week ending	In state prisons	In facilities other than state prisons						Total Inmates
		Transition centers	County prisons	Pre-rel centers	Private prisons	Inmate boot camps	Total others	
03-Jun-2022	32247	2205	4586		7338	0	14129	46376
10-Jun-2022	32350	2193	4575		7325	0	14093	46443
17-Jun-2022	32435	2183	4498		7319	0	14000	46435
24-Jun-2022	32447	2173	4558		7313	0	14044	46491
27-Jun-2022	32402	2163	4540		7306	0	14009	46411
01-Jul-2022	32467	2195	4604		7341	0	14140	46607
08-Jul-2022	32496	2189	4567		7313	0	14069	46565
15-Jul-2022	32477	2193	4551		7315	0	14059	46536
22-Jul-2022	32530	2202	4523		7316	0	14041	46571
29-Jul-2022	32549	2220	4529		7340	0	14089	46638
05-Aug-2022	32525	2216	4456		7325	0	13997	46522
12-Aug-2022	32507	2226	4405		7338	0	13969	46476
19-Aug-2022	32461	2226	4437		7320	0	13983	46444
26-Aug-2022	32465	2231	4467		7339	0	14037	46502
02-Sep-2022	32452	2207	4521		7339	0	14067	46519
09-Sep-2022	32405	2205	4496		7326	0	14027	46432
16-Sep-2022	32515	2227	4488		7327	0	14042	46557
23-Sep-2022	32527	2227	4449		7337	0	14013	46540
30-Sep-2022	32605	2236	4439		7337	0	14012	46617
07-Oct-2022	32565	2244	4505		7336	0	14085	46650
14-Oct-2022	32515	2230	4538		7335	0	14103	46618
21-Oct-2022	32509	2234	4529		7355	0	14118	46627
28-Oct-2022	32524	2233	4563		7314	0	14110	46634
04-Nov-2022	32530	2206	4584		7282	1	14073	46603
11-Nov-2022	32556	2228	4596		7292	1	14117	46673
18-Nov-2022	32619	2241	4616		7274	1	14132	46751
25-Nov-2022	32718	2219	4614		7273	1	14107	46825
02-Dec-2022	32792	2226	4610		7296	1	14133	46925
09-Dec-2022	32828	2225	4549		7295	1	14070	46898
16-Dec-2022	32931	2232	4516		7277	1	14026	46957
23-Dec-2022	33119	2243	4532		7273	1	14049	47168
30-Dec-2022	33205	2245	4531		7284	1	14061	47266
06-Jan-2023	33185	2229	4505		7255	1	13990	47175
13-Jan-2023	33197	2212	4580		7239	1	14032	47229
20-Jan-2023	33224	2195	4585		7214	1	13995	47219
27-Jan-2023	33290	2216	4577		7160	1	13954	47244
03-Feb-2023	33321	2194	4580		7136	1	13911	47232
10-Feb-2023	33392	2178	4575		7086	1	13840	47232
17-Feb-2023	33585	2178	4577		7078	1	13834	47419
24-Feb-2023	33665	2181	4589		7049	1	13820	47485
03-Mar-2023	33701	2184	4579		7054	1	13818	47519
10-Mar-2023	33777	2183	4537		7035	1	13756	47533
17-Mar-2023	33873	2187	4511		7026	1	13725	47598
24-Mar-2023	33889	2205	4545		6997	1	13748	47637
31-Mar-2023	34007	2231	4570		6989	1	13791	47798
07-Apr-2023	33971	2214	4571		6952	1	13738	47709
14-Apr-2023	33982	2160	4575		6942	1	13678	47660
21-Apr-2023	34063	2143	4536		6916	1	13596	47659
28-Apr-2023	34156	2160	4616		6901	1	13678	47834
05-May-2023	34134	2110	4645		6890	1	13646	47780
12-May-2023	33978	2190	4615		6884	1	13690	47668
19-May-2023	34127	2233	4555		6888	1	13677	47804
26-May-2023	34113	2231	4506		6889	1	13627	47740

Offenders waiting in local jails for state facilities

Week ending	Probationers waiting in jail				State prisoners wating in jail					Assigned females
	.. for PDCs	.. for RSAT	.. for boot camps	Total	Total backlog	Not yet assigned	In adm process	Delayed transport	Ready for pickup	
03-Jun-2022	15	5	0	20	406	41	365	200	165	54
10-Jun-2022	14	5	0	19	325	40	285	200	85	51
17-Jun-2022	15	5	0	20	404	41	363	194	169	66
24-Jun-2022	14	5	0	19	383	40	343	193	150	61
27-Jun-2022	14	5	0	19	471	40	431	191	240	76
01-Jul-2022	14	5	0	19	439	38	401	199	202	73
08-Jul-2022	14	5	0	19	406	37	369	202	167	62
15-Jul-2022	14	4	0	18	384	37	347	203	144	45
22-Jul-2022	14	4	0	18	455	38	417	206	211	63
29-Jul-2022	14	4	0	18	385	38	347	203	144	60
05-Aug-2022	14	4	0	18	380	40	340	200	140	50
12-Aug-2022	14	4	0	18	359	38	321	199	122	59
19-Aug-2022	14	4	0	18	383	38	345	194	151	65
26-Aug-2022	14	4	0	18	418	39	379	187	192	65
02-Sep-2022	14	4	0	18	469	37	432	188	244	56
09-Sep-2022	14	4	0	18	439	37	402	190	212	57
16-Sep-2022	14	4	0	18	400	39	361	187	174	48
23-Sep-2022	14	4	0	18	457	38	419	187	232	52
30-Sep-2022	14	4	0	18	533	38	495	187	308	56
07-Oct-2022	14	4	0	18	468	37	431	184	247	57
14-Oct-2022	14	4	0	18	471	36	435	187	248	48
21-Oct-2022	14	4	0	18	482	35	447	183	264	58
28-Oct-2022	14	4	0	18	629	35	594	188	406	75
04-Nov-2022	14	4	0	18	623	35	588	183	405	72
11-Nov-2022	14	4	0	18	626	34	592	187	405	53
18-Nov-2022	14	4	0	18	658	35	623	195	428	61
25-Nov-2022	14	4	0	18	688	36	652	193	459	56
02-Dec-2022	14	4	0	18	537	36	501	194	307	38
09-Dec-2022	14	4	0	18	507	37	470	191	279	41
16-Dec-2022	14	4	0	18	506	39	467	192	275	58
23-Dec-2022	14	4	0	18	481	40	441	196	245	65
30-Dec-2022	14	4	0	18	447	39	408	197	211	44
06-Jan-2023	14	4	0	18	342	38	304	194	110	41
13-Jan-2023	14	4	0	18	355	37	318	195	123	45
20-Jan-2023	14	4	0	18	354	35	319	192	127	42
27-Jan-2023	14	4	0	18	321	34	287	194	93	53
03-Feb-2023	14	4	0	18	374	33	341	191	150	58
10-Feb-2023	14	4	0	18	338	32	306	189	117	47
17-Feb-2023	15	4	0	19	395	32	363	191	172	59
24-Feb-2023	15	4	0	19	380	31	349	191	158	51
03-Mar-2023	15	4	0	19	443	30	413	189	224	49
10-Mar-2023	16	4	0	20	432	29	403	178	225	50
17-Mar-2023	15	4	0	19	433	30	403	181	222	59
24-Mar-2023	15	4	1	20	484	29	455	181	274	65
31-Mar-2023	15	4	1	20	518	31	487	184	303	56
07-Apr-2023	15	4	1	20	584	30	554	188	366	56
14-Apr-2023	15	4	1	20	579	29	550	191	359	55
21-Apr-2023	14	4	1	19	610	27	583	188	395	66
28-Apr-2023	14	4	1	19	599	28	571	192	379	61
05-May-2023	14	4	1	19	628	27	601	191	410	79
12-May-2023	14	4	1	19	657	29	628	189	439	62
19-May-2023	14	4	1	19	643	27	616	190	426	56
26-May-2023	14	4	1	19	717	28	689	193	496	68